

San Francisco International Airport

Terminal 2 Buildback

CDR Presentation - Phase 2 & 3

September 17, 2018



Design Drivers

Sense of Place



- Connection to Airfield
- Views to Mountains and Bay
- Access to Fresh Air, Sunshine, Fog
- Guest and Employee Hospitality

Surprise & Delight



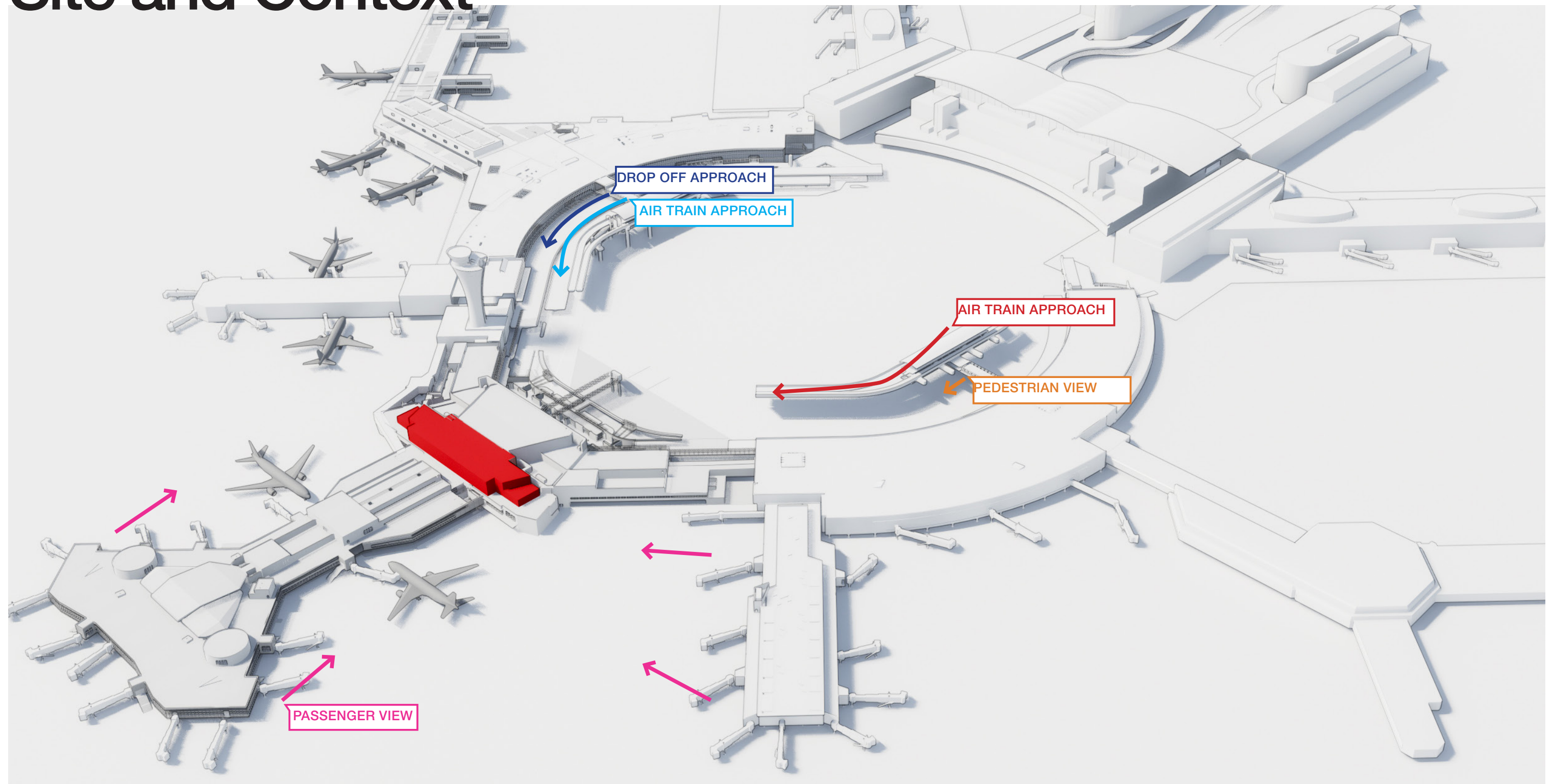
- Public Observation Deck Retreat
- Opportunity for Enhanced Technology
- Museum Collection and Storytelling

Impactful Interventions

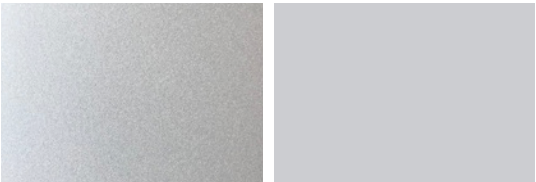


- Vertical Circulation
- Airline Lounge Entry Experience
- Meet and Greet Lounge
- Observation Deck

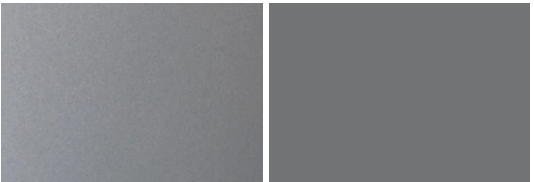
Site and Context



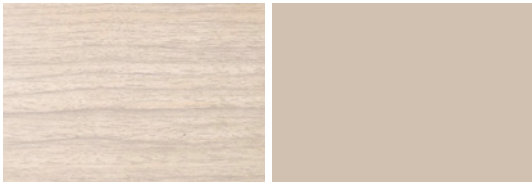
Material Palette
Domestic Campus Precedent & Development



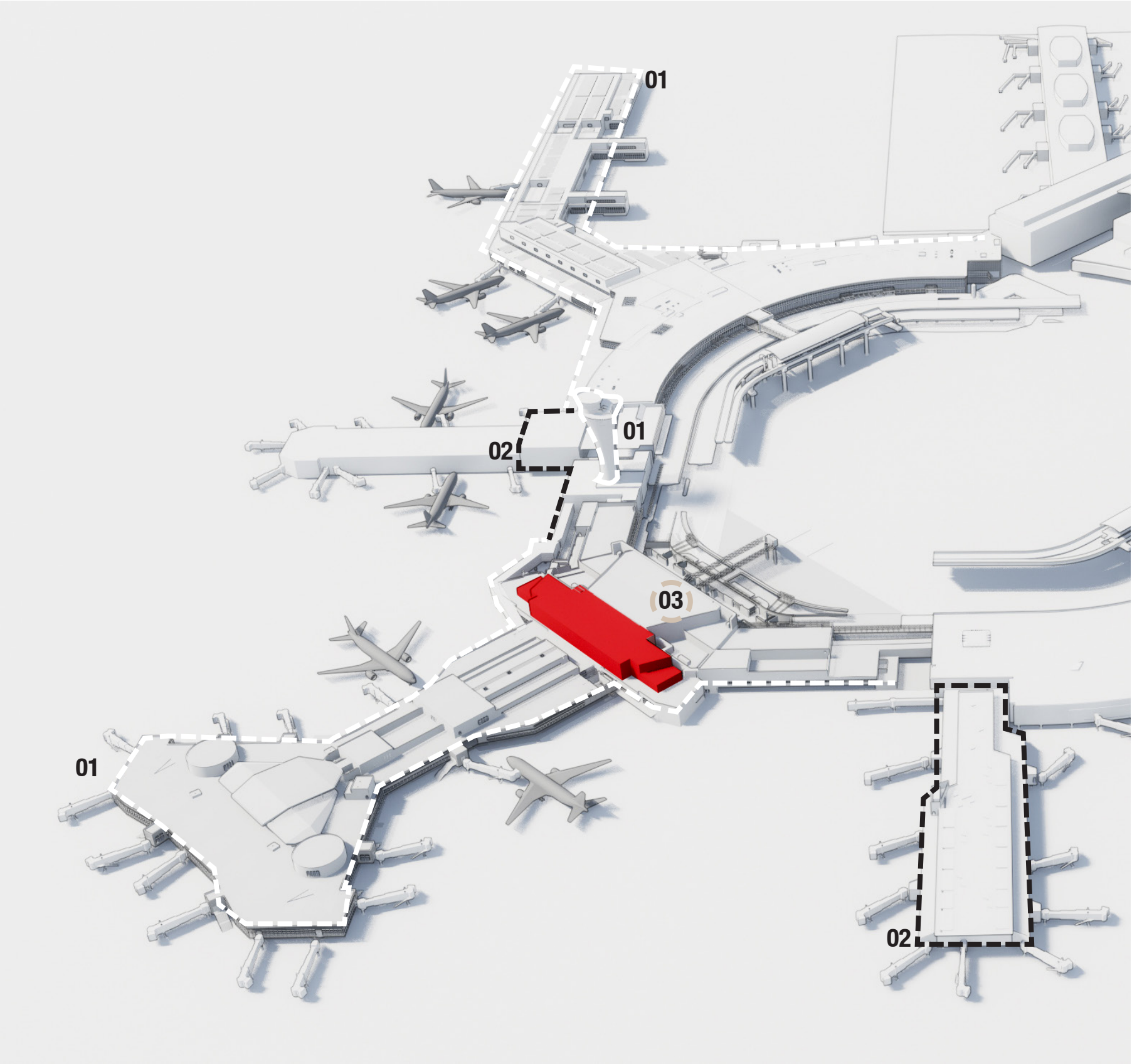
01 Metal & Stucco: Arcadia Silver
Match T2 Metal Panels



02 Metal & Stucco: Silver Storm
Similar to T3 and T1/T2 Connector



03 Wood Look Accent: Oak
Similar to T2 Entry Hall



01 T2 Curbside



01 T2 Airtrain



01 T2 Airside



01 Previous ATCT



03 T2 Departure Hall



01 T2/T3 Connector



01 T2/T3 Connector

02 T3 BA/E



02 T1/T2 Connector

02 T1/T2 Connector

Previous / Existing Conditions



Previous Airtrain View



Proposed Airtrain View

Previous / Existing Conditions



Curbside View after Tower Demolition



Proposed View

Previous / Existing Conditions

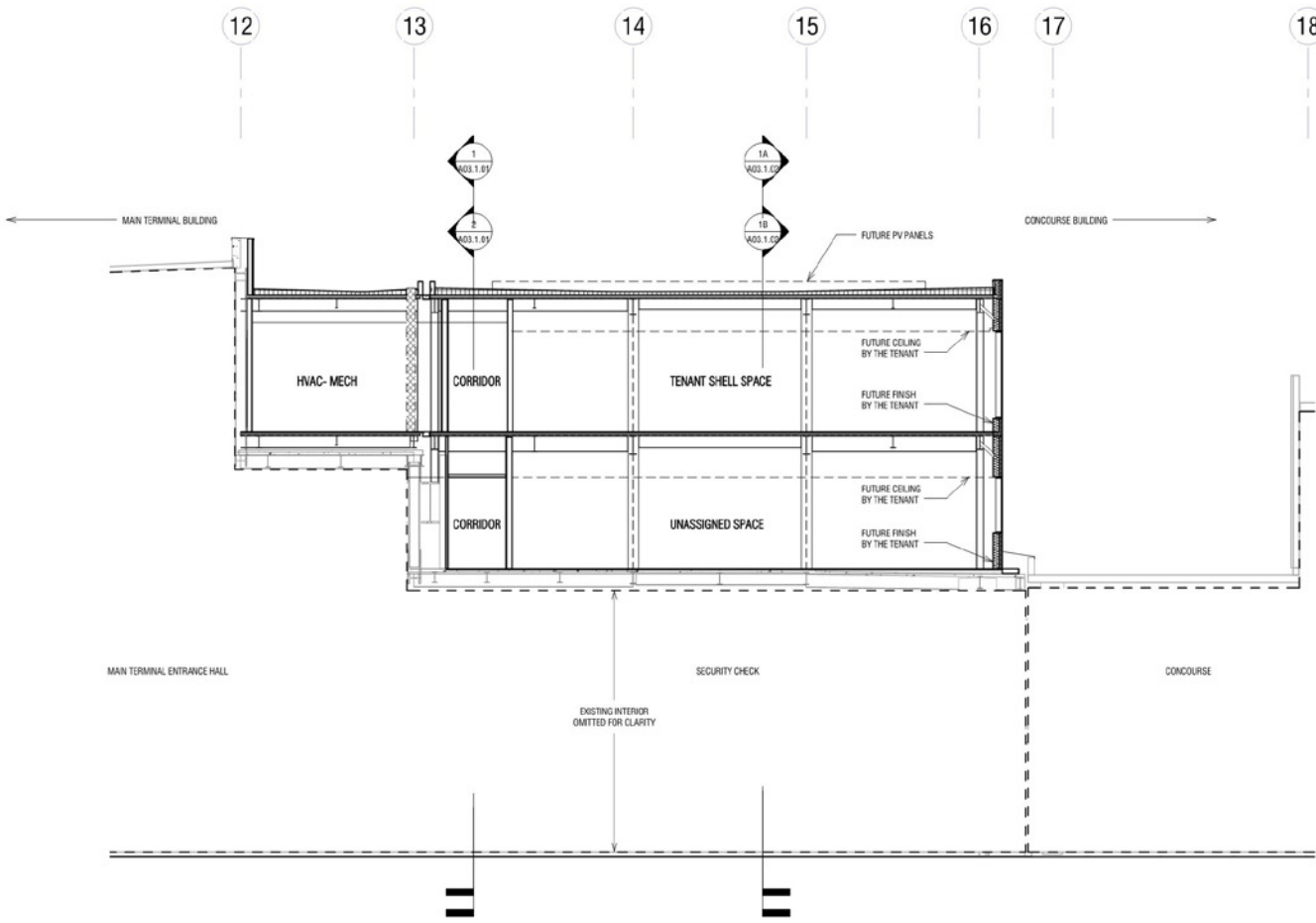


Previous Aerial View

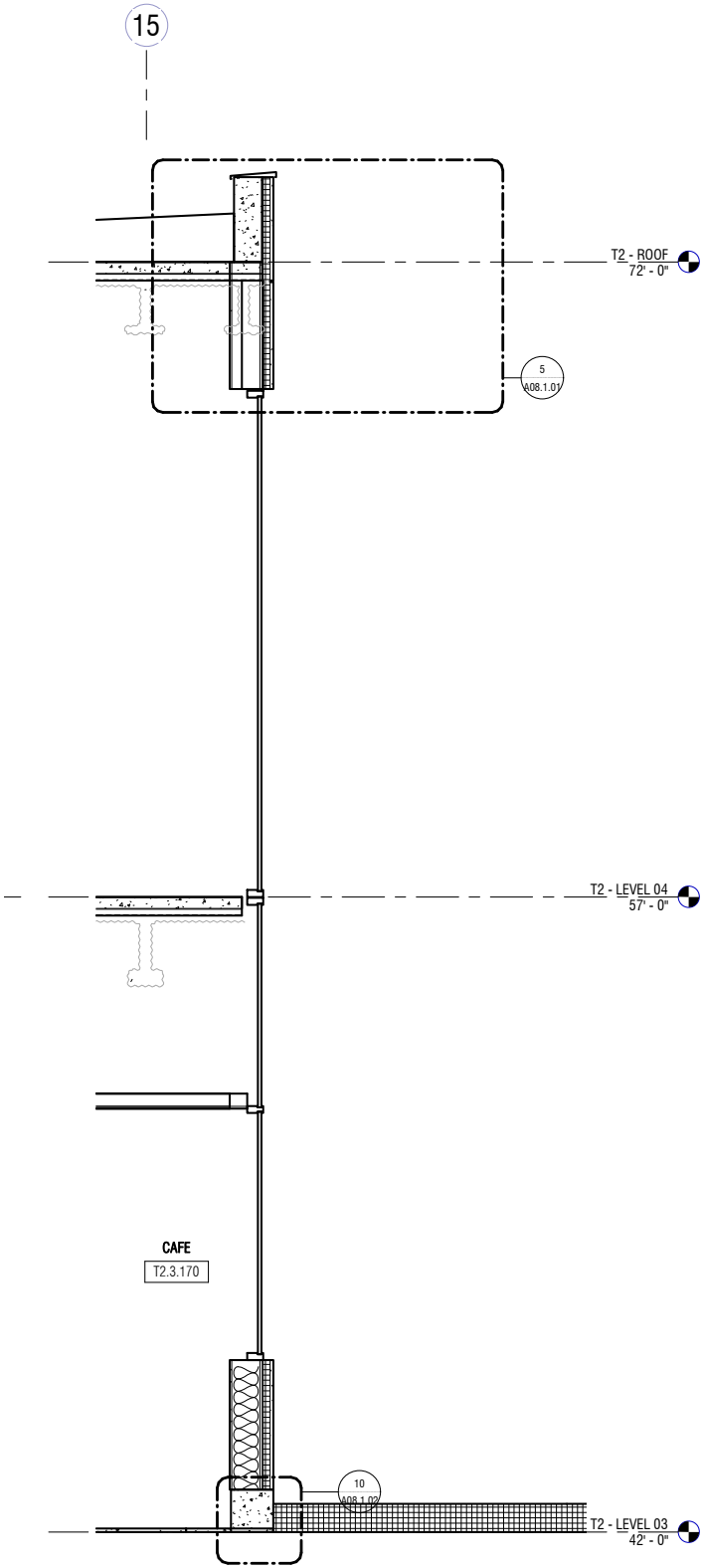
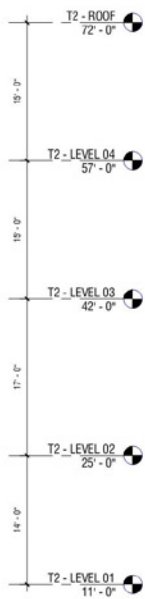


Proposed Aerial View

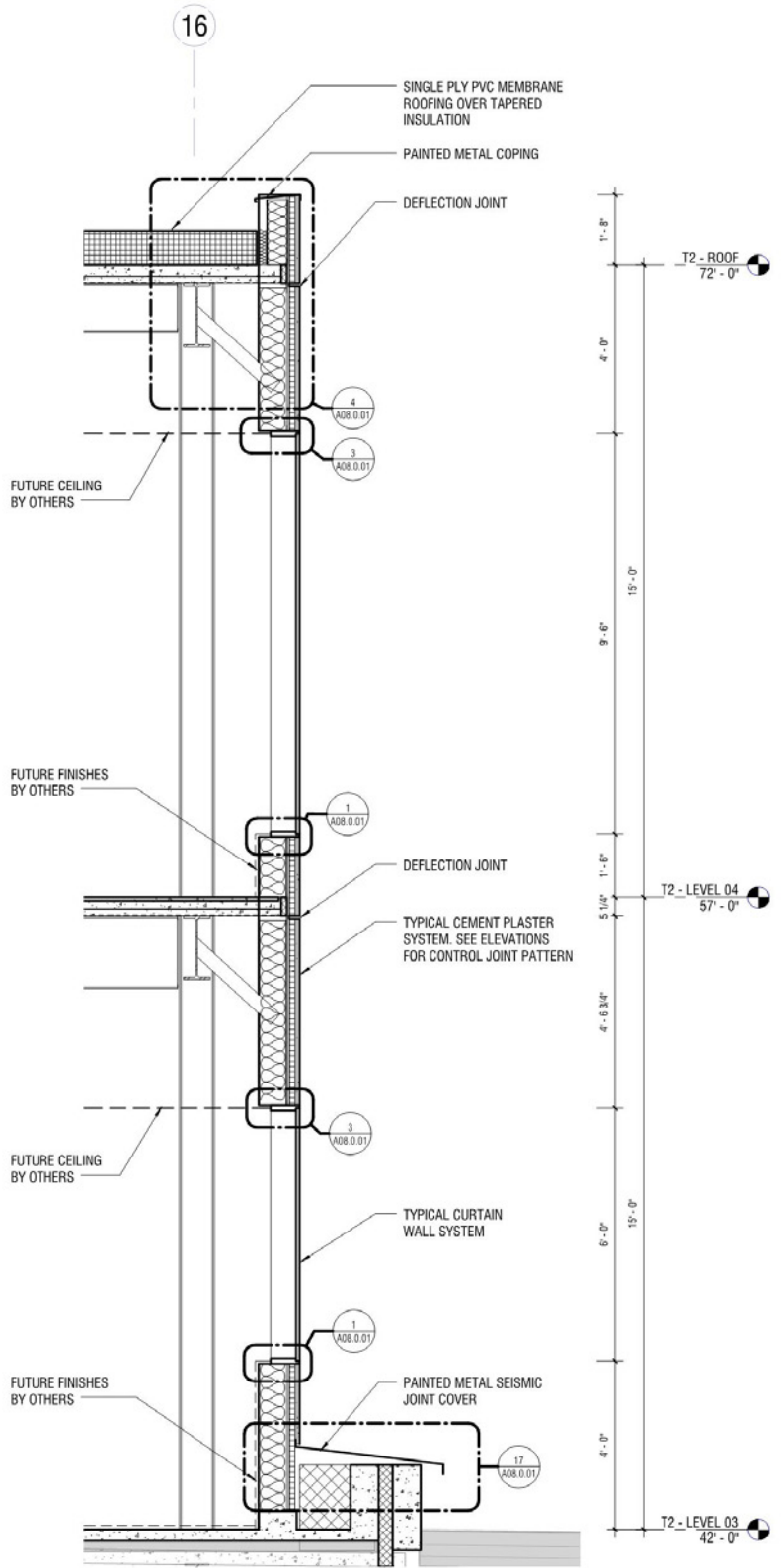
Building Sections & Details



2 TRANSVERSE BUILDING SECTION
1/8" = 1'-0"

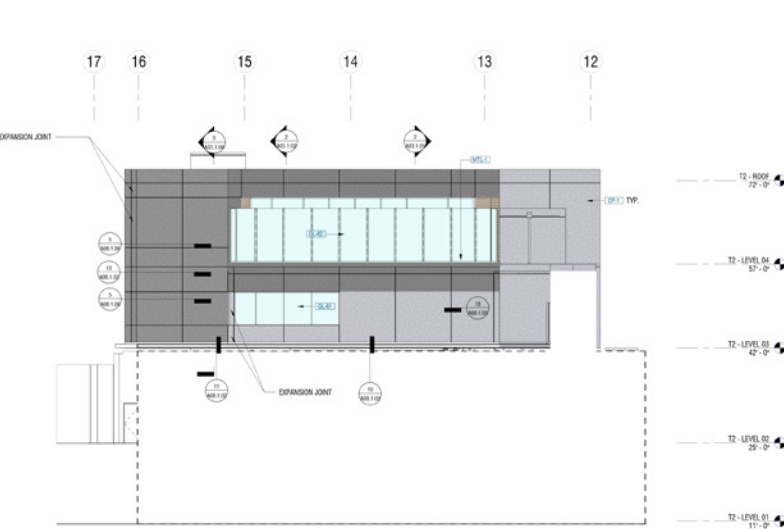


2 EXTERIOR WALL SECTION - STOREFRONT
DOUBLE STORY
1/2" = 1'-0"

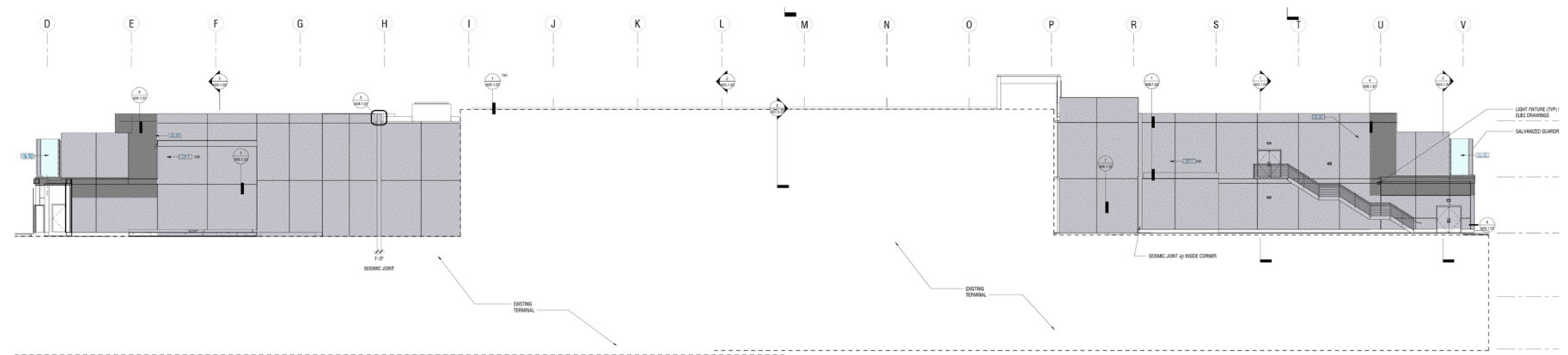


1 EXTERIOR WALL SECTION - STOREFRONT
1/2" = 1'-0"

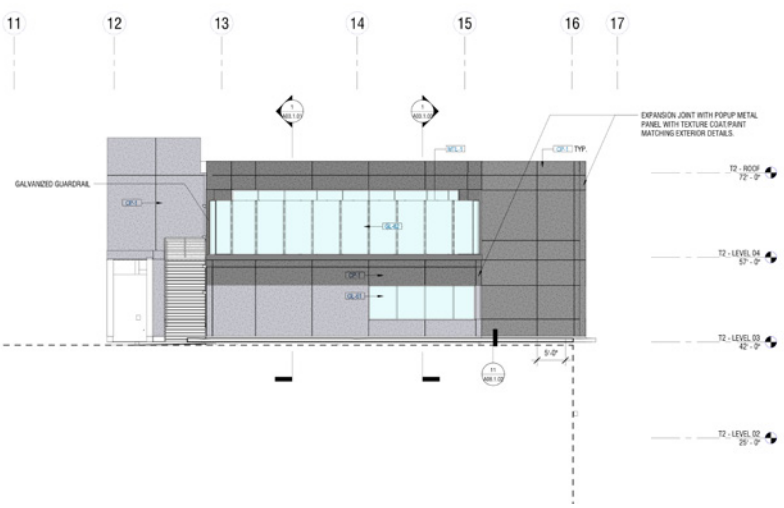
Building Elevations



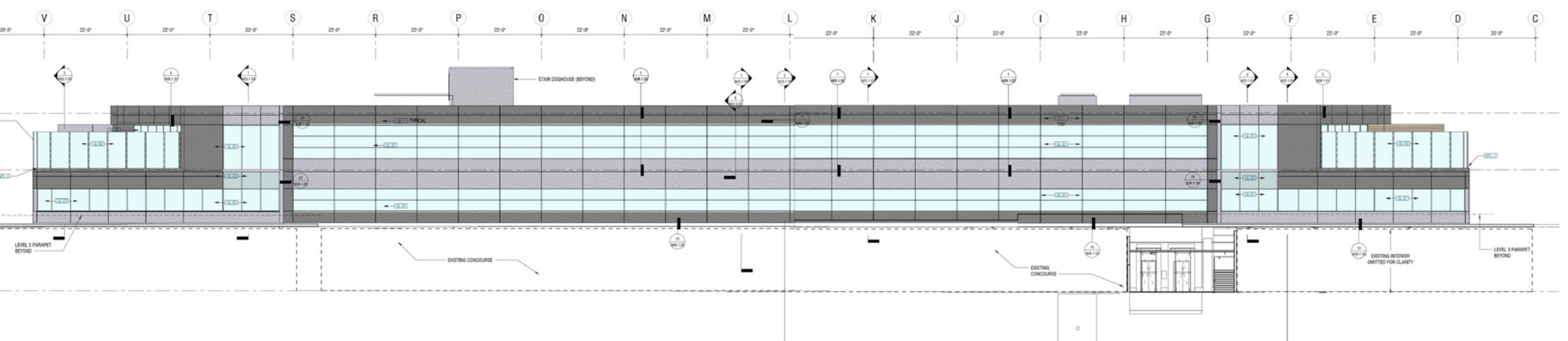
North Elevation



West Elevation

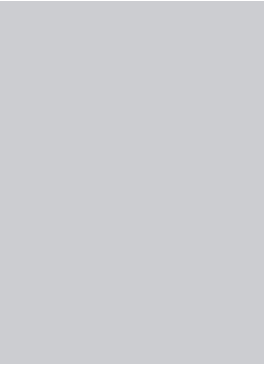


South Elevation



East Elevation

Building Materials



1 Stucco: Grey Match E1



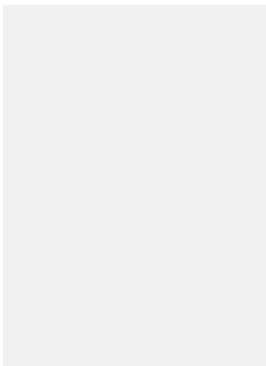
2 Stucco: Dark Grey Match E2



3 Wood Look Metal Panel



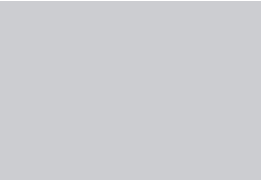
4 Vision Glass



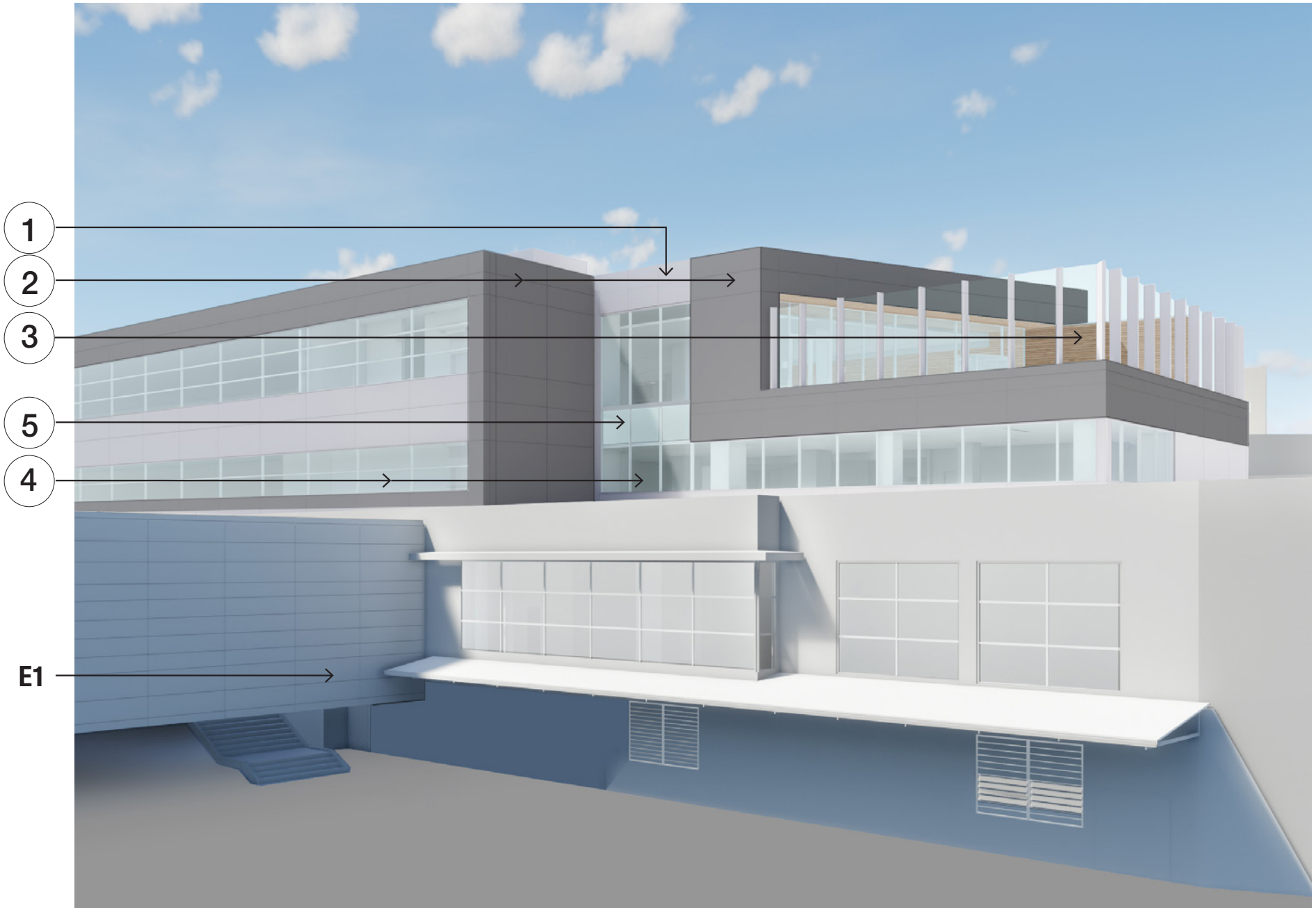
5 Spandrel, Back Painted Glass



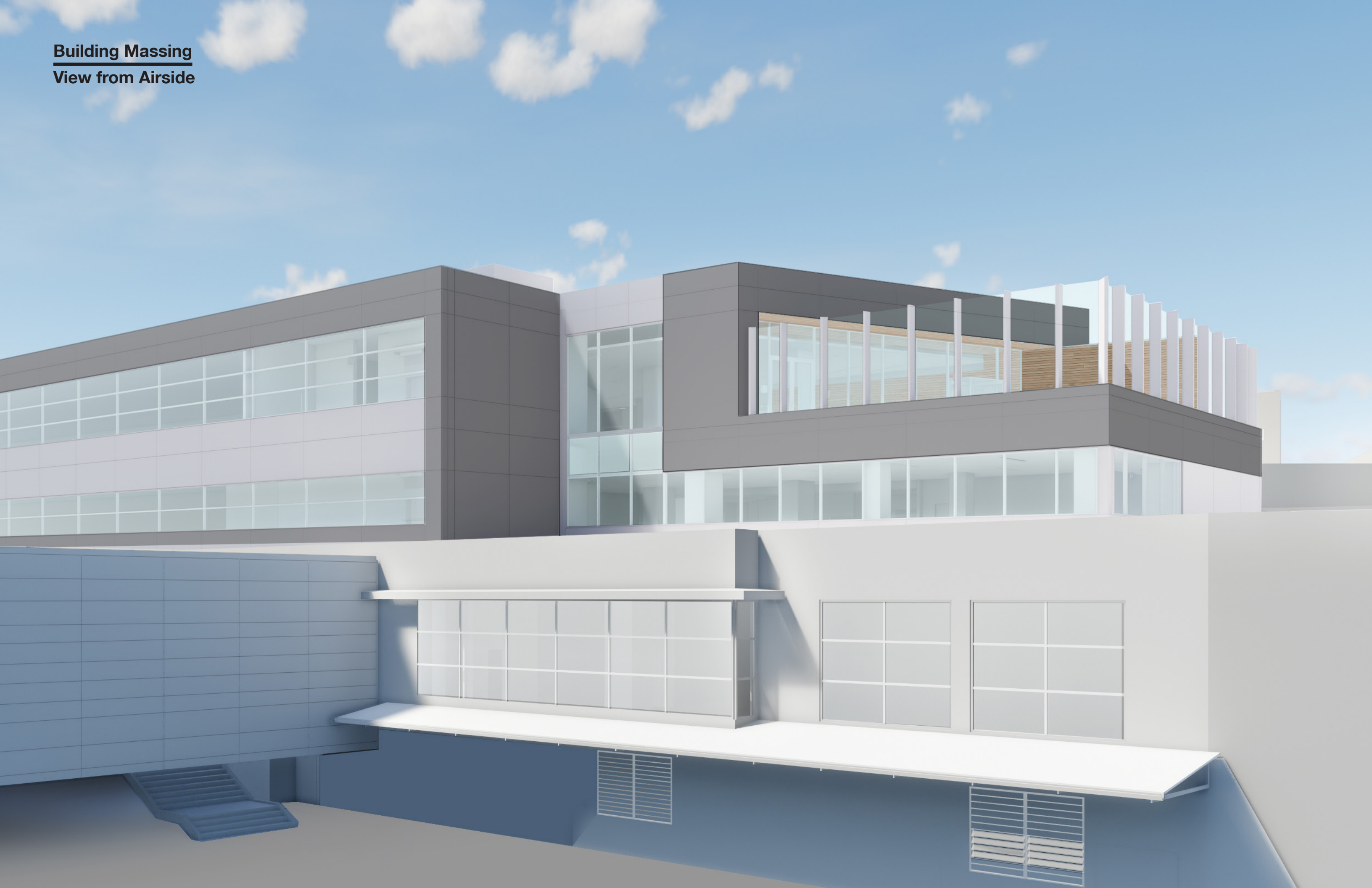
E1 Existing T2 Metal Panel and Stucco



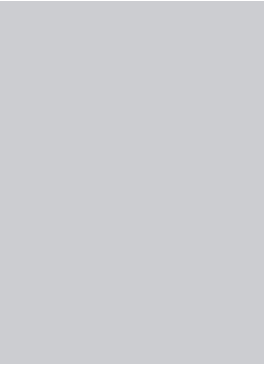
E2 Existing T2 Accent Metal Panel & T3 Metal Panel



Building Massing
View from Airside



Building Materials



1 Stucco: Grey Match E1



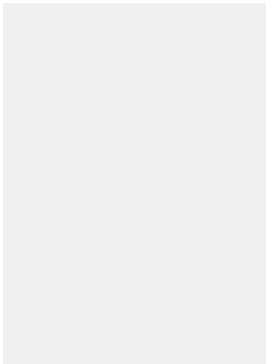
2 Stucco: Dark Grey Match E2



3 Wood Look Metal Panel



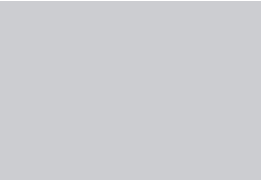
4 Vision Glass



5 Spandrel, Back Painted Glass



E1 Existing T2 Metal Panel and Stucco



E2 Existing T2 Accent Metal Panel & T3 Metal Panel



1

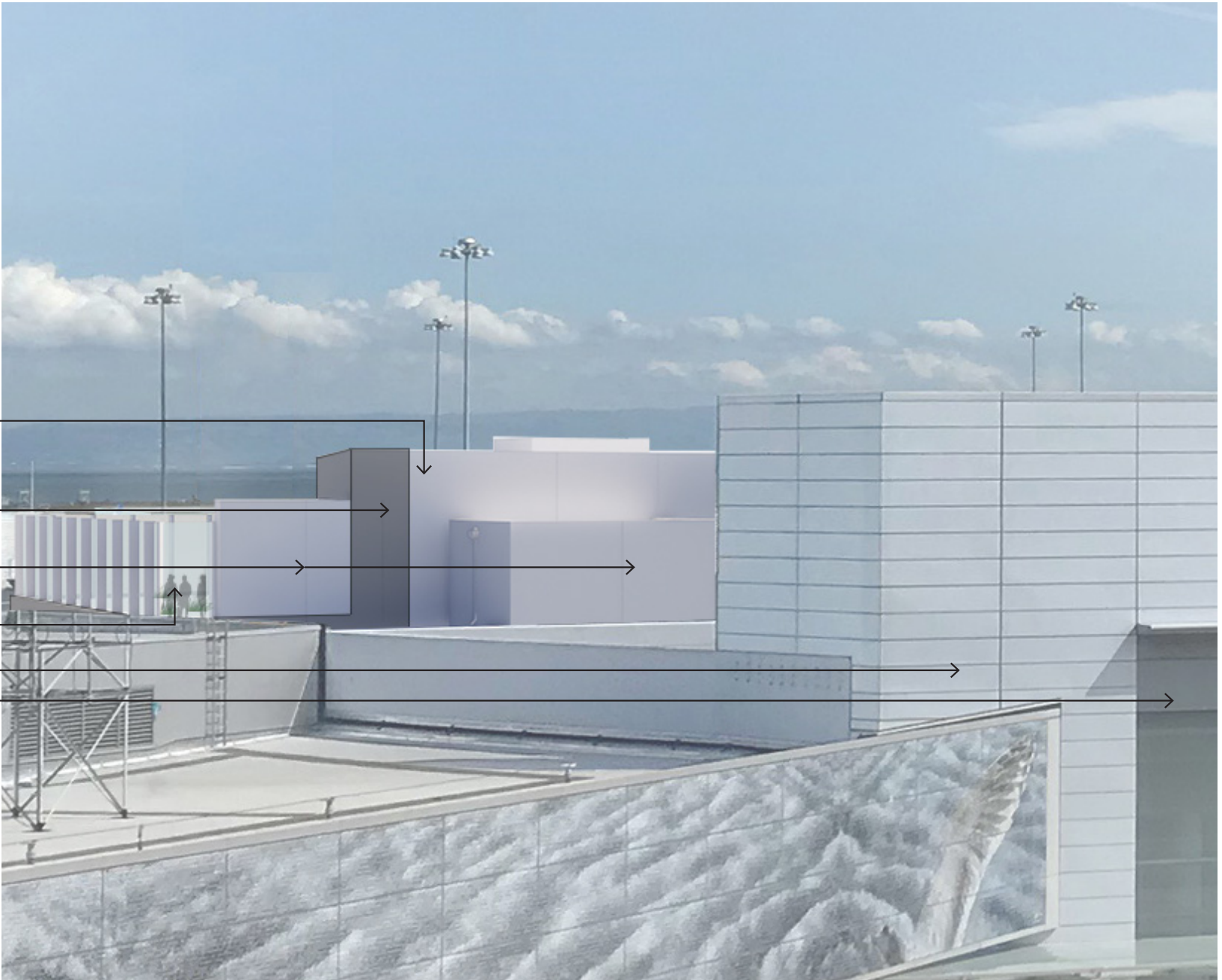
2

1

4

E1

E2



Building Massing
View from Air Train Red Line



Building Massing
South East Airfield View



Building Massing
North East Aerial View

