

SAN FRANCISCO INTERNATIONAL AIRPORT

# Civic Design Review

SFO T2 ATCT Build Back

May 5, 2017



# A Close Connection to The Airfield



A HISTORY OF PUBLIC OBSERVATION AND ENGAGEMENT AT SFO



GEOGRAPHIC CENTER OF SFO

# Site / Context

Terminal 2

Existing ATCT Tower



Terminal 3

Terminal 1

# Site / Context

Terminal 1

Existing ATCT Tower

International Terminal



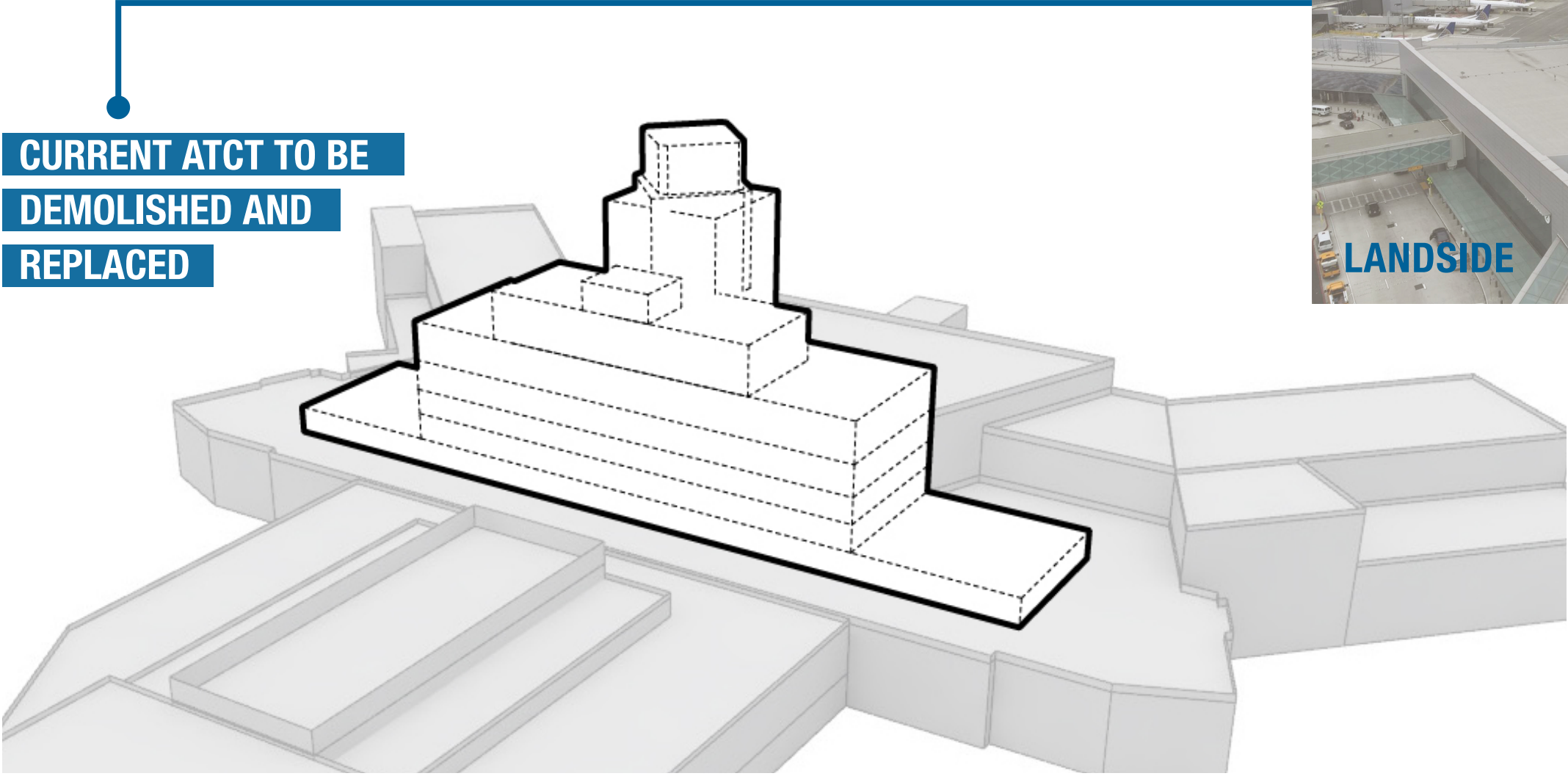
Terminal 2

Terminal 3

# Site: Existing

The T2 Site is located at the heart of SFO.

It is the midpoint of the Terminal Loop between T1 and T2. The site is unique as it provides a location with unprecedented views and proximity to the arrival and departure runways. The Build Back will be the first thing a traveler sees when they arrive and the last thing they see when they depart. It will both welcome and bid farewell. The Buildback will provide a location for aviation enthusiasts to enjoy their favorite passtime, watching the achievement of flight. It will provide the traveler and visitor an opportunity to explore the past history of SFO while viewing it's current history from a proximity and location that will make it a true one of kind San Francisco Experience.

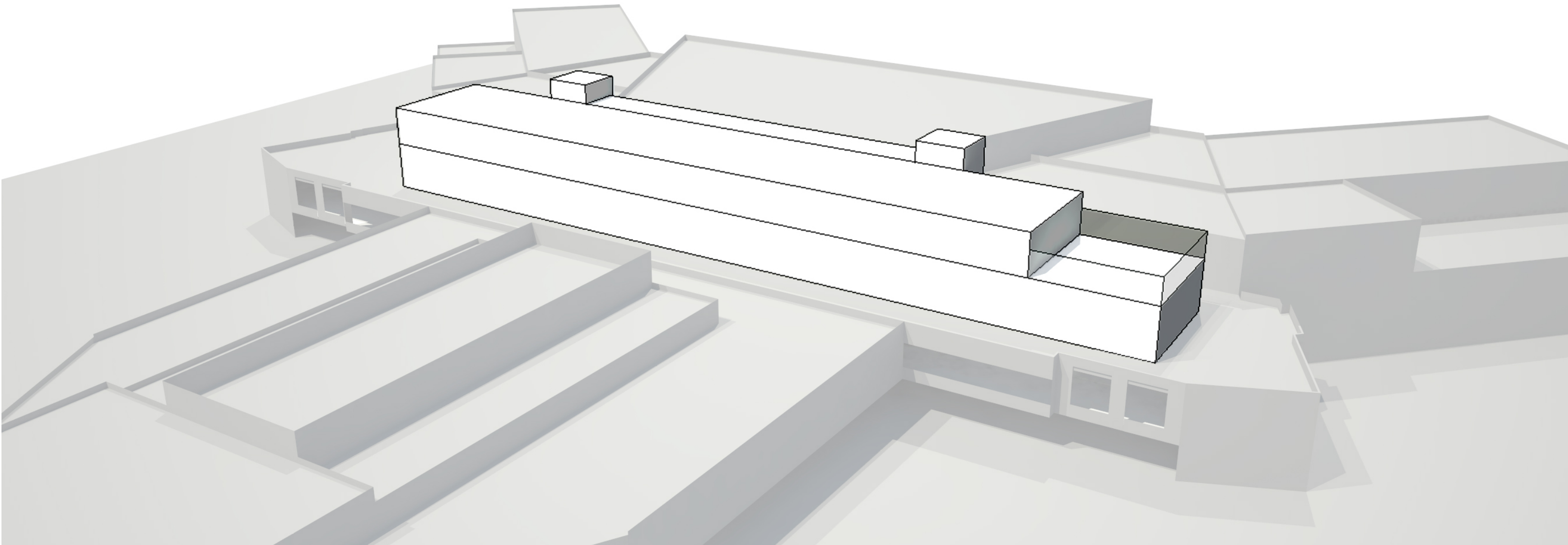


# Site: Buildback

## 2 Story Structure

Level 3: Approx. 18,000sf Program: Office

Level 4: Approx. 17,000sf Program: Office / Cafe / Observation Deck



# Public Views: Airtrain Drop Off



Existing Building to be Demolished

# Public Views: Airtrain Drop Off



Future Buildback



# Public Views: Airtrain Drop Off



Existing Building to be Demolished

# Public Views: Airtrain Drop Off



Future Buildback

## Public Views: Airtrain Drop Off



Existing Building to be Demolished

# Public Views: Airtrain Drop Off



Future Buildback

# Post Security View from AOA



Existing Building to be Demolished

# Post Security View from AOA



Existing Building to be Demolished