

# BUS MAINTENANCE FACILITY

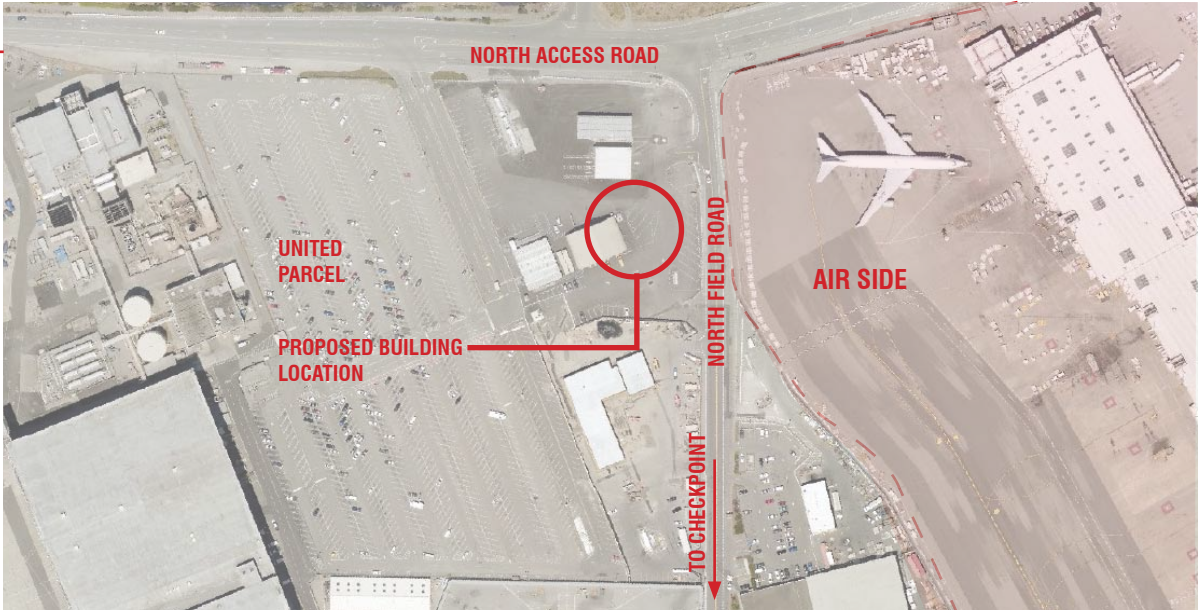
San Francisco Arts Commission  
Civic Design Review

**Design Development**



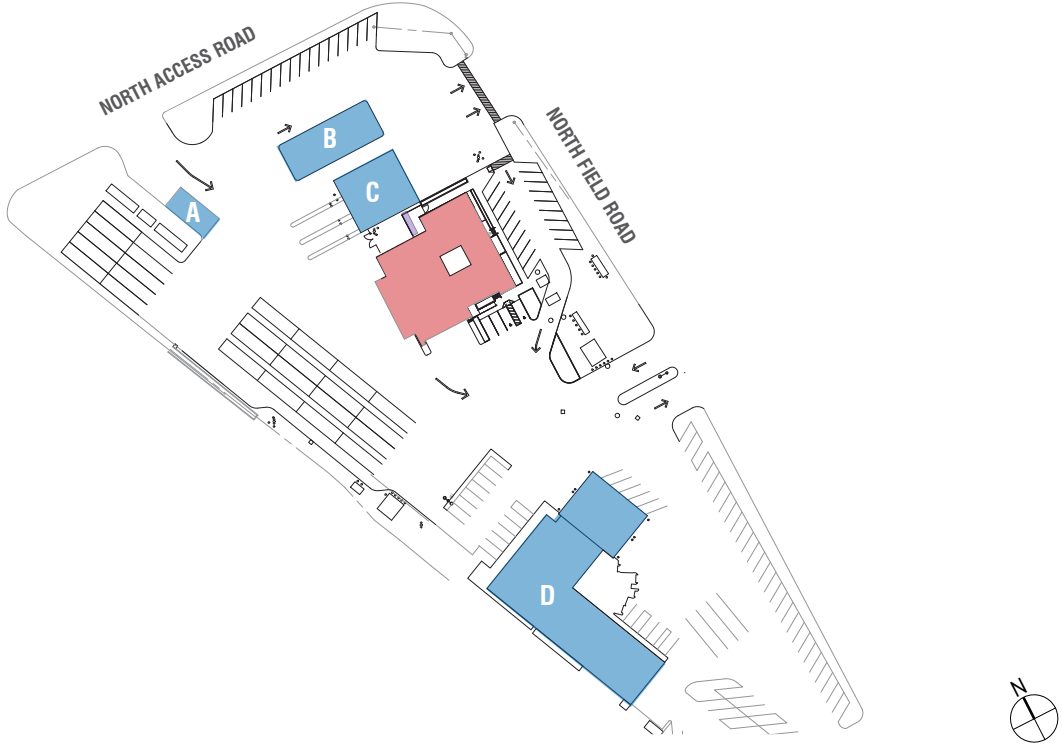
**7/15/2019  
CDR PRESENTATION**

# SITE LOCATION - PLOT 700

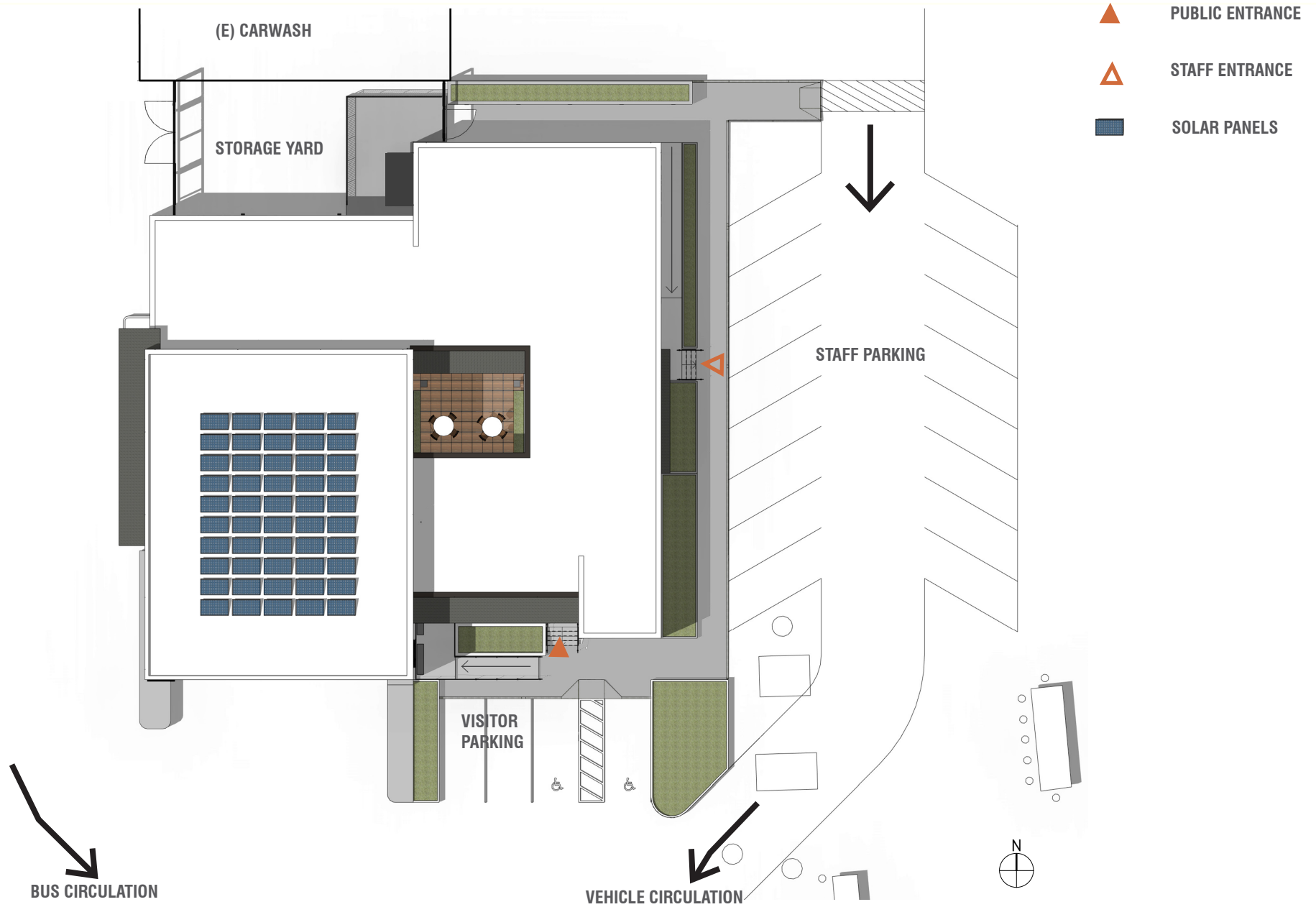




# SITE CONTEXT

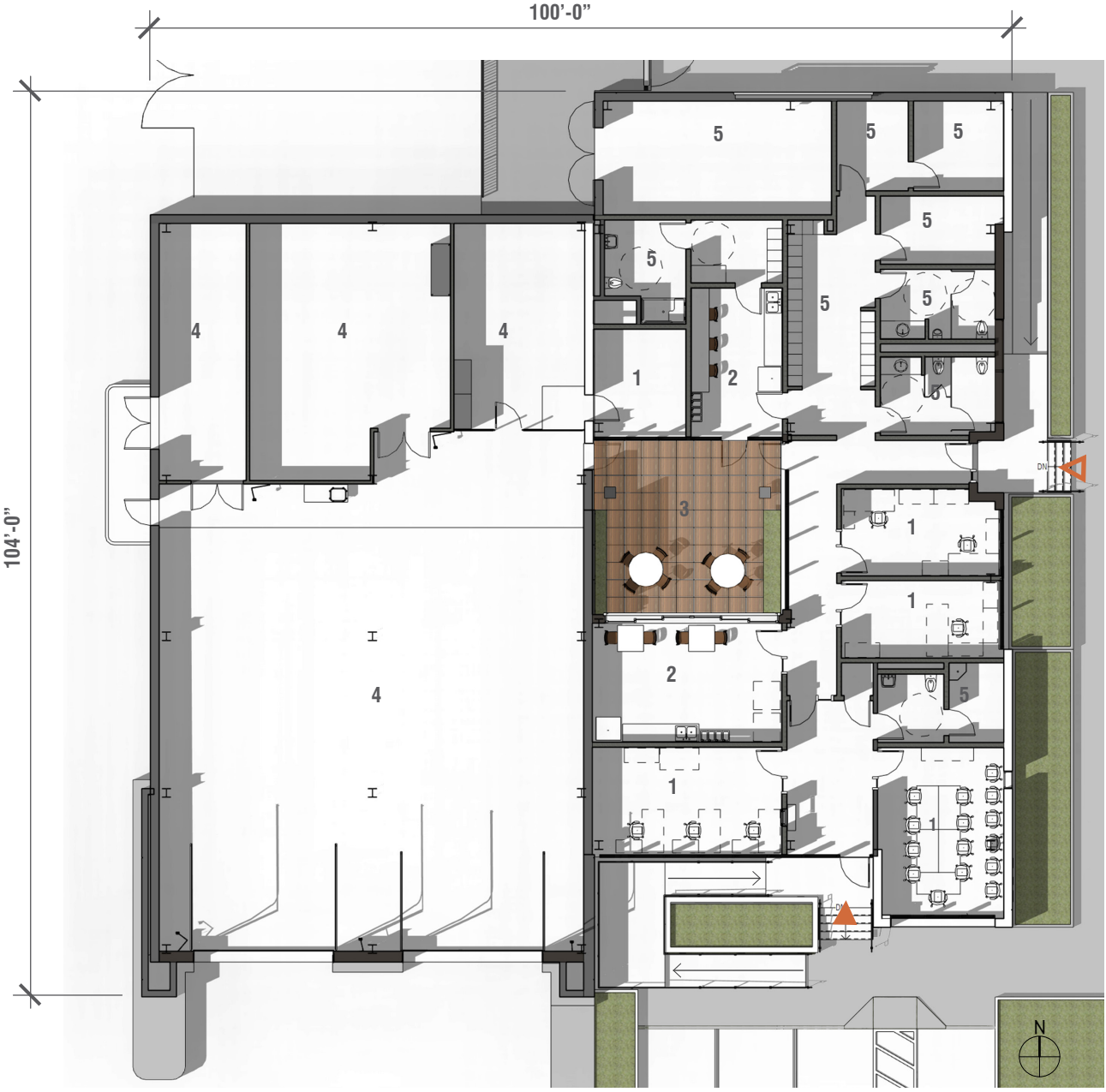




# SITE PLAN





# FLOOR PLAN

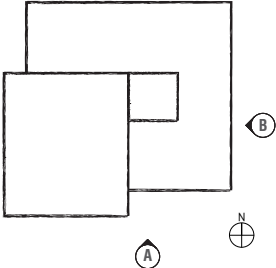


-  PUBLIC ENTRANCE
-  STAFF ENTRANCE

**PROGRAM:**  
 1. ADMINISTRATION  
 2. BREAK ROOM  
 3. COURTYARD  
 4. MAINTENANCE BAY  
 5. MEP / SUPPORT

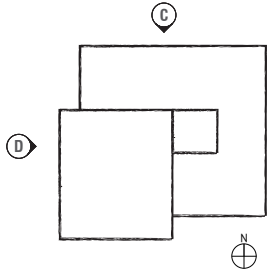
**BUILDING AREA:**  
 8,150 SF

# ELEVATIONS

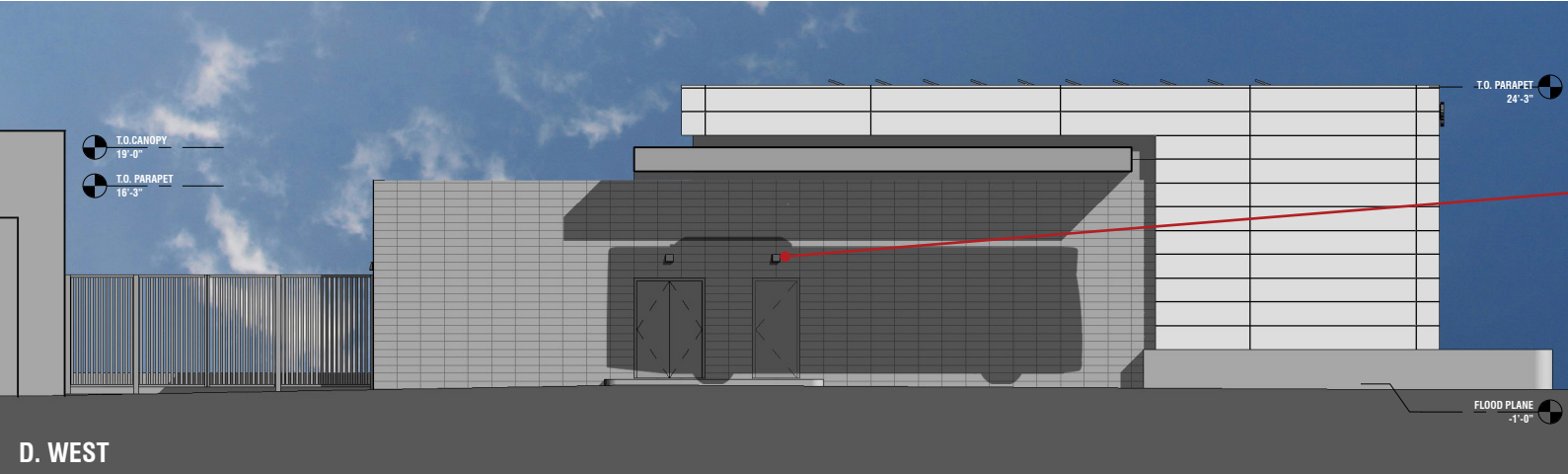




# ELEVATIONS

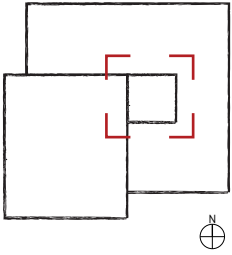
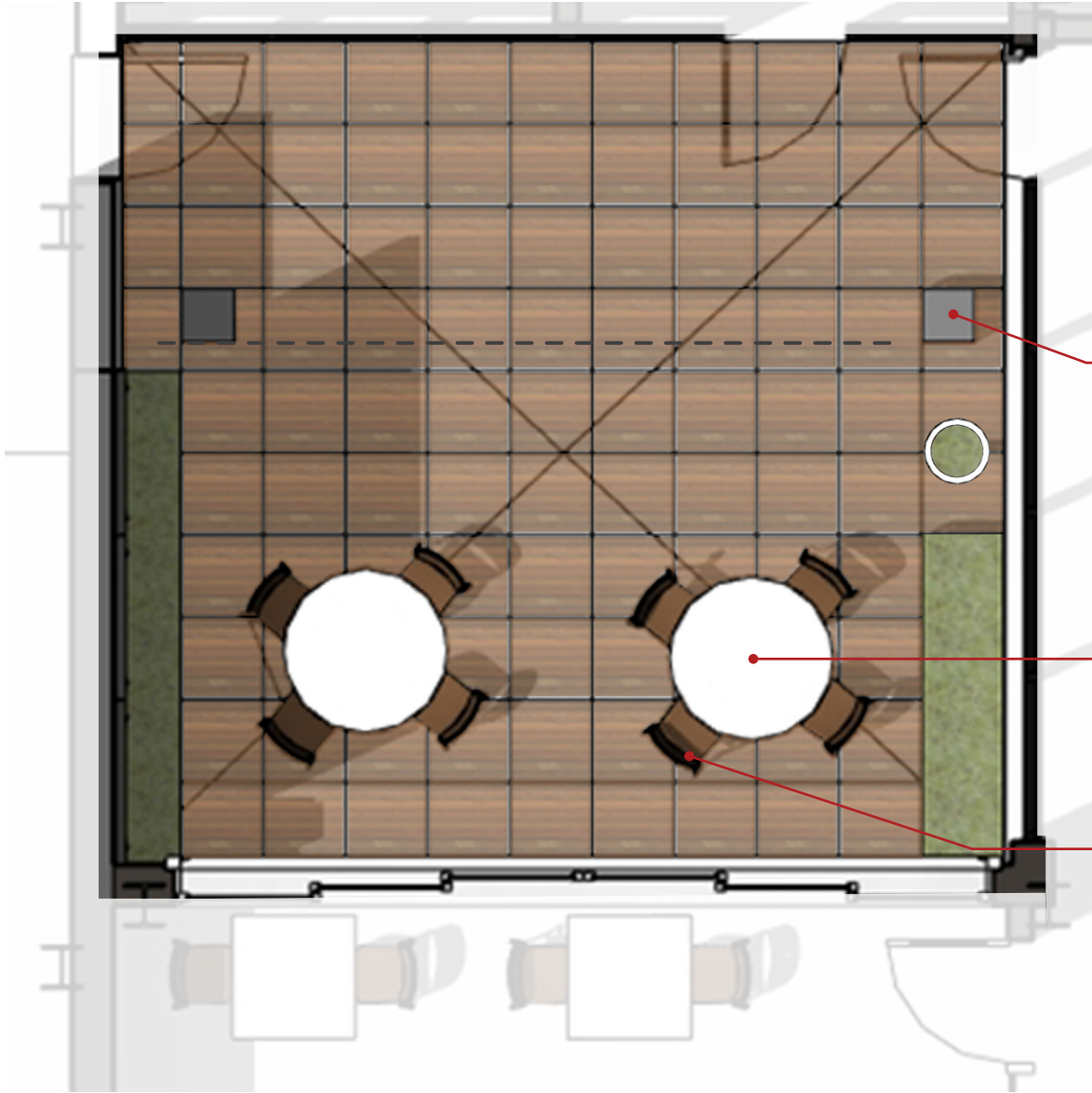


LEOTEK LIGHTING



BEGA SCENCE

# COURTYARD PLAN



BEGA LIGHTING



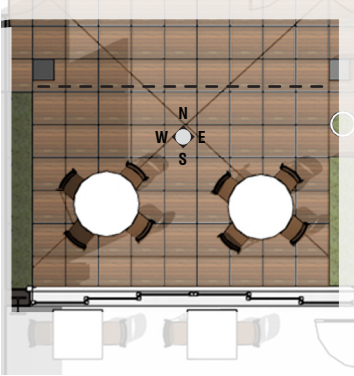
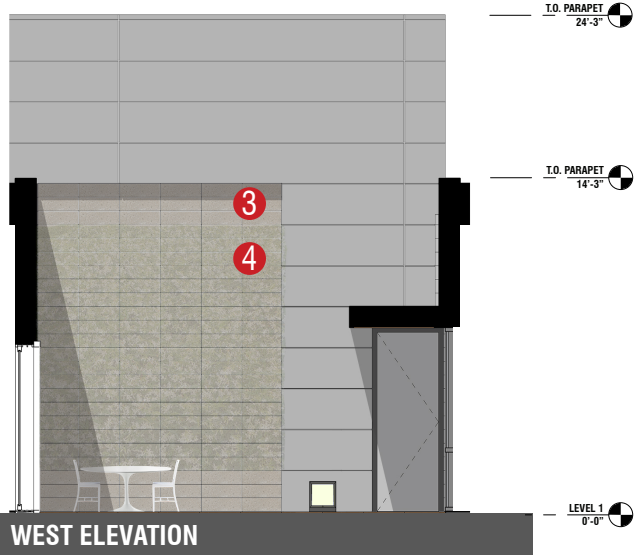
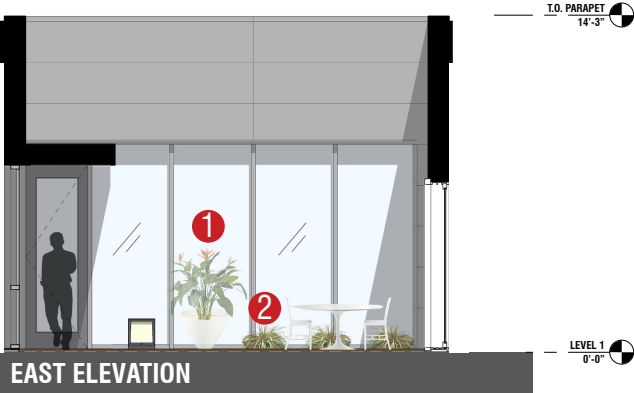
EMECO "NAVY" CHAIRS



SAARINEN TABLES



# COURTYARD ELEVATIONS



# PERSPECTIVE - SOUTHEAST



**PUBLIC ENTRANCE**



**GLASS SECTIONAL DOOR REFERENCE**



**METAL PANEL REFERENCE**



**CANOPY REFERENCE**



# PERSPECTIVE - EAST



STAFF ENTRANCE



GLASS SECTIONAL DOOR REFERENCE

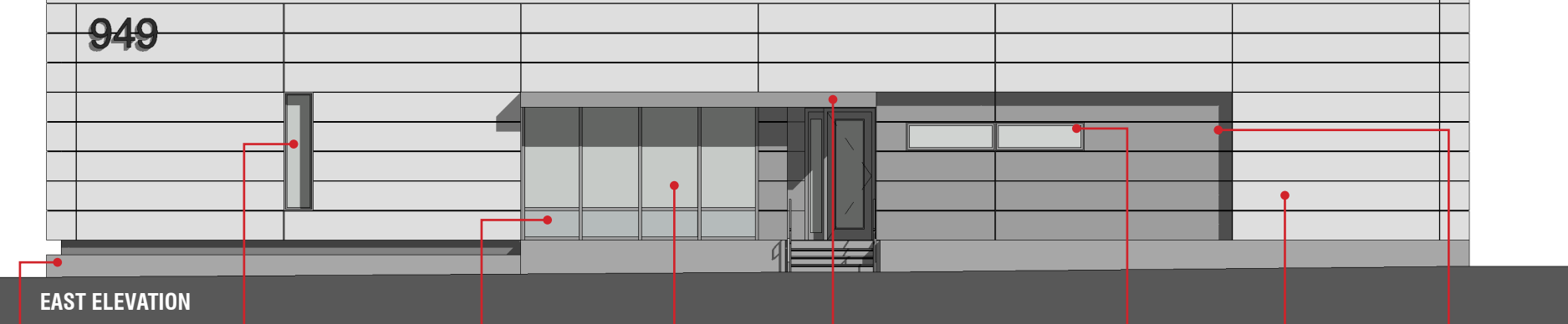


METAL PANEL REFERENCE

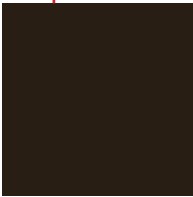


CANOPY REFERENCE

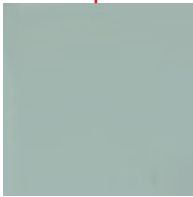
# MATERIAL PALLETTE



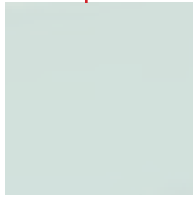
PLANTER-  
GROUND FACE CMU



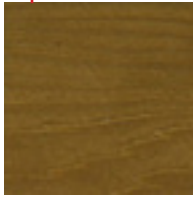
MULLION / CANOPY -  
KAWNEER  
STOREFRONT  
PERMAFLOW  
CLASSIC BRONZE



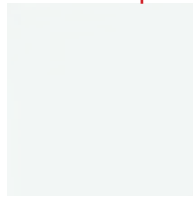
SHADOW BOX -  
SOLARBAN 70XL  
CLEAR



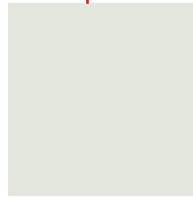
CLEAR GLAZING -  
SOLARBAN 70XL  
CLEAR



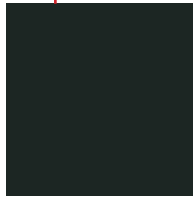
CANOPY SOFFIT -  
ARMSTRONG  
WESTERN HEMLOCK  
WALLOCK



TRANSLUCENT  
GLAZING -  
SOLARBAN 70XL  
CLEAR WITH  
TRANSLUCENT  
INTERLAYER



INSULATED METAL  
PANEL -  
CENTRIA  
FORMAWALL  
FLUROFINISH BONE  
WHITE



INSULATED METAL  
PANEL -  
CENTRIA  
FORMAWALL  
FLUROFINISH DARK  
BRONZE

# SIGNAGE- DIRECTIONAL WAYFINDING

**SIZE:**  
See drawing

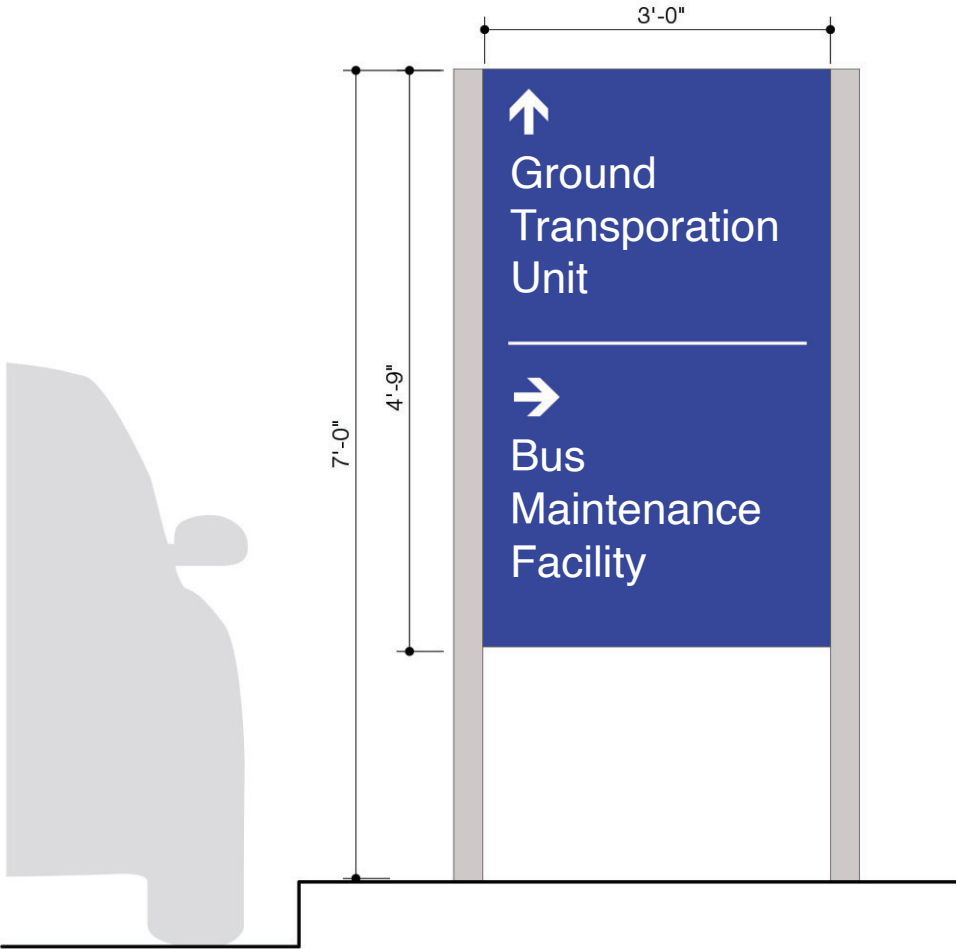
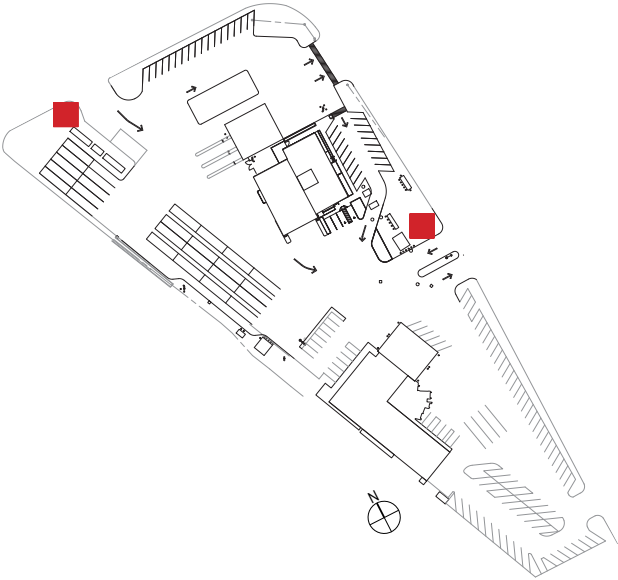
**MATERIALS:**  
Pre-made aluminum post and panel sign system  
Sign face materials to match existing site signage  
Text and icons to be reflective vinyl

**COLORS:**  
Blue, white to match SFO standards

**TYPOGRAPHY:**  
Helvetica

**MESSAGE:**  
See drawing

**INSTALLATION:**  
Sign legs installed in ground with concrete foundations





# SIGNAGE- BUILDING NUMBER

**SIZE:**  
See drawing

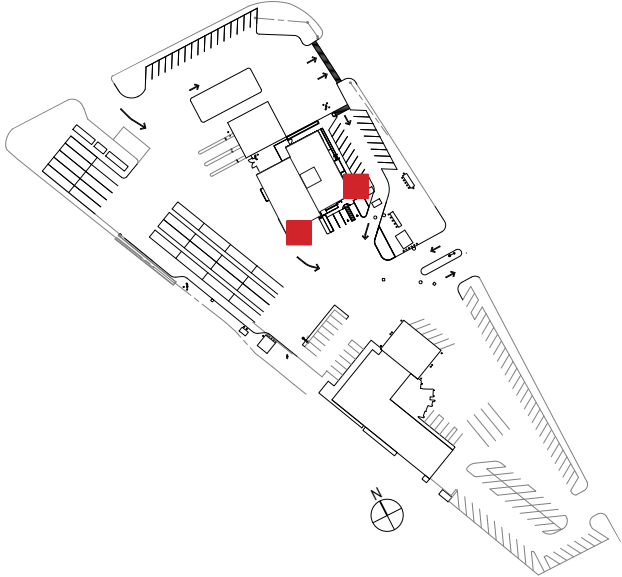
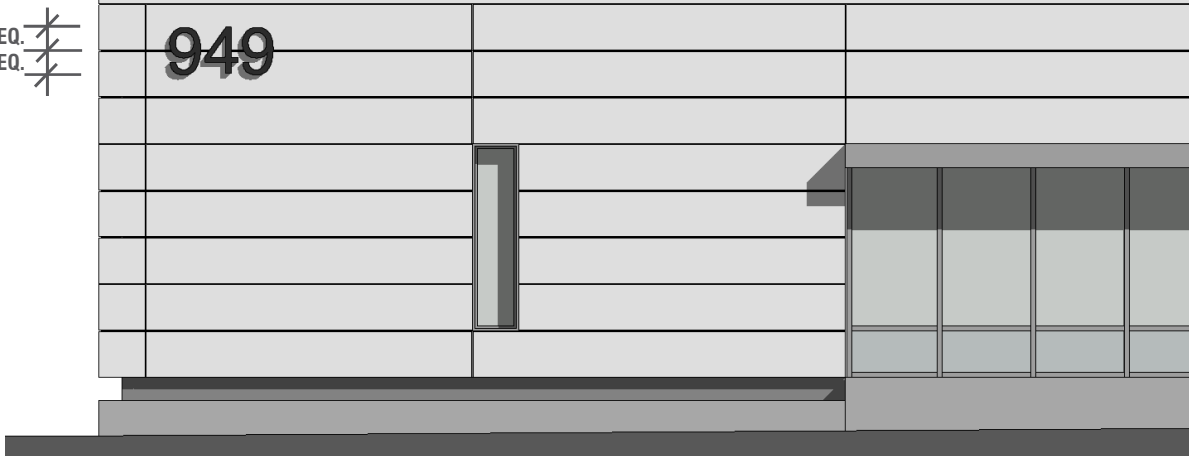
**MATERIALS:**  
Solid dimensional characters 2" thick

**COLORS:**  
Color to match mullion

**TYPOGRAPHY:**  
Helvetica

**MESSAGE:**  
See drawing

**INSTALLATION:**  
Mounted on exterior wall of building



# SIGNAGE- VINYL GRAPHIC

**SIZE:**  
See drawing

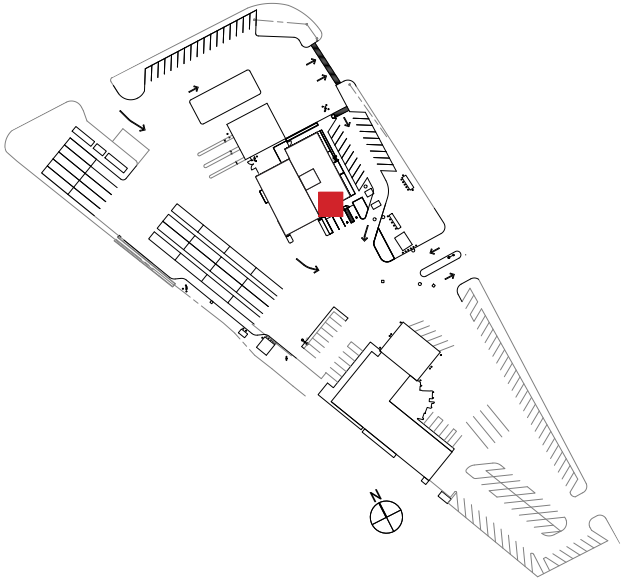
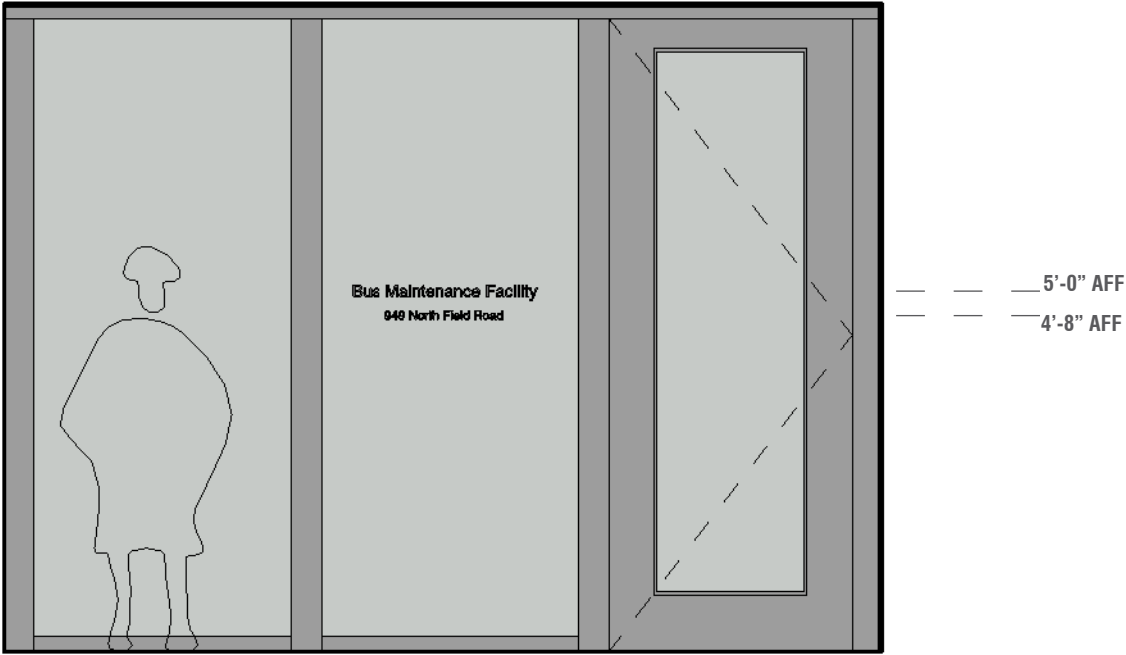
**MATERIALS:**  
Vinyl Graphic

**COLORS:**  
White

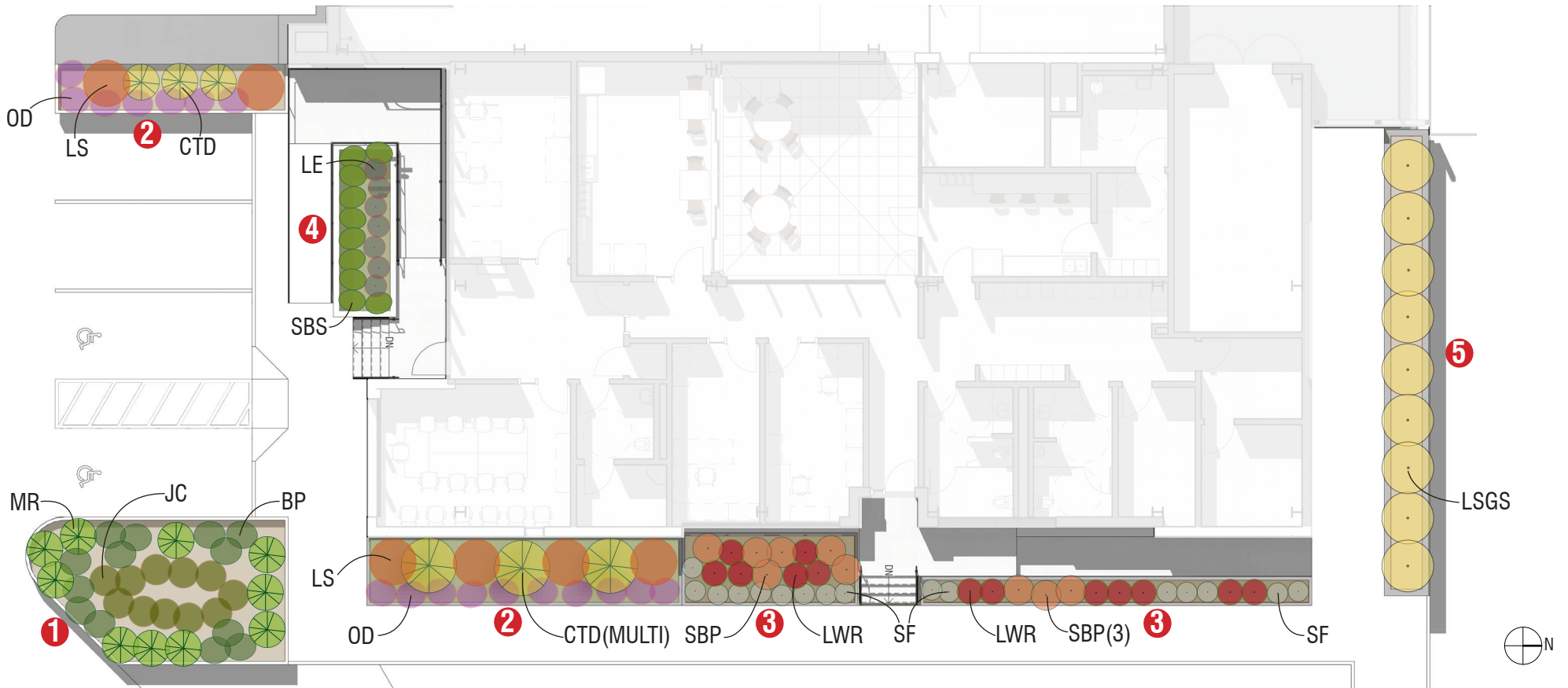
**TYPOGRAPHY:**  
Helvetica

**MESSAGE:**  
See drawing

**INSTALLATION:**  
Mounted on exterior glass



# SITE LANDSCAPE





# PROPOSED PLANTINGS

## 1 BIOSWALES



**MR**  
Mulenbergia Rigens



**JC**  
Juncus Californica



**BP**  
Baccharis Pilularis "Twin Peaks"



**LSGS**  
Leucadendron "Safari Gold Strike"

## 2 FLOW-THROUGH PLANTERS



**CTD**  
Cordyline "Torbay Dazzler"

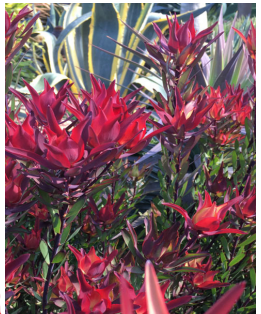


**LS**  
Leucospermum "Sunrise"



**OD**  
Oscularia Deltoides

## 3 XERISCAPE



**LWR**  
Leucadendron "Winter Red"



**SBP**  
Strelitzia "Bird of Paradise"



**SF**  
Senecio Ficoides "Mount Everest"

## 4 ENTRY PLANTER



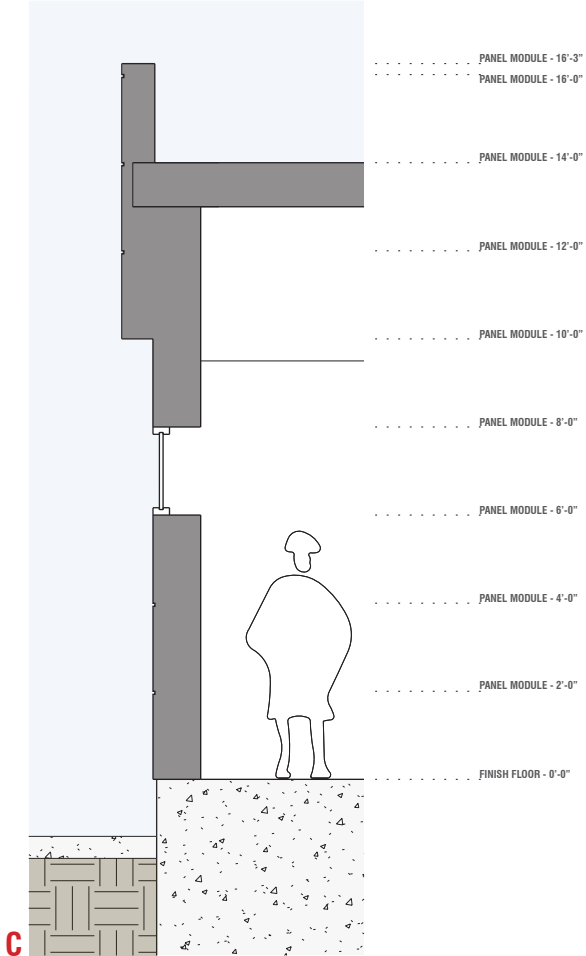
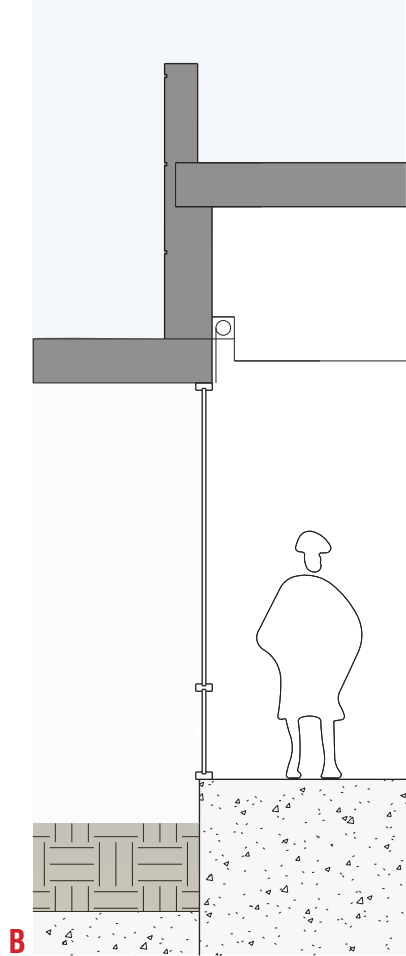
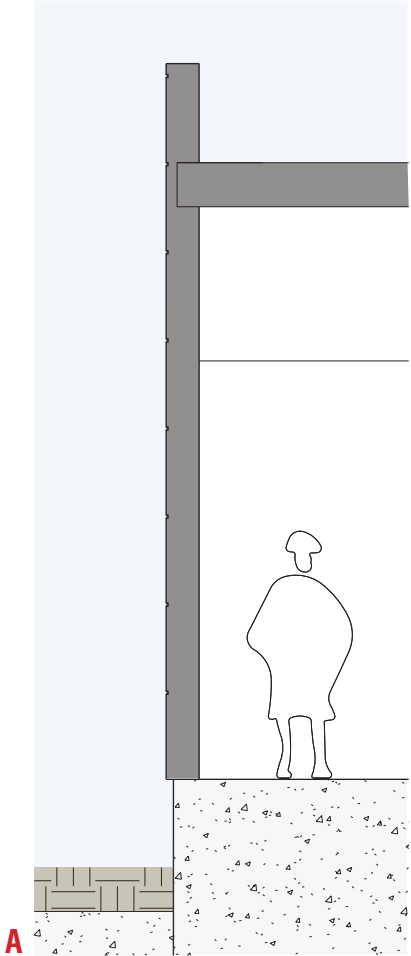
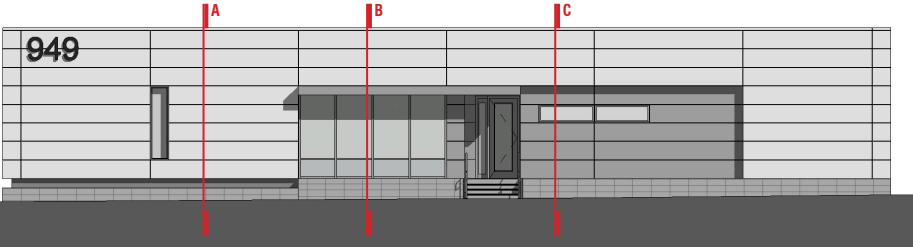
**LE**  
Leucadendron "Ebony"



**SBS**  
Sedum "Blue Spruce"

## 5 LANDSCAPE SCREEN

# FACADE SECTIONS



**THANK YOU.  
QUESTIONS?**