

**GTU RELOCATION PROJECT
TERMINAL 1 REDEVELOPMENT PROGRAM
SAN FRANCISCO INTERNATIONAL AIRPORT**

**CIVIC DESIGN REVIEW
PHASE II: DESIGN DEVELOPMENT PRESENTATION**

SEPTEMBER 19, 2016



mwa architects



PAULETT TAGGART
ARCHITECTS

EXISTING SITE



mwa architects

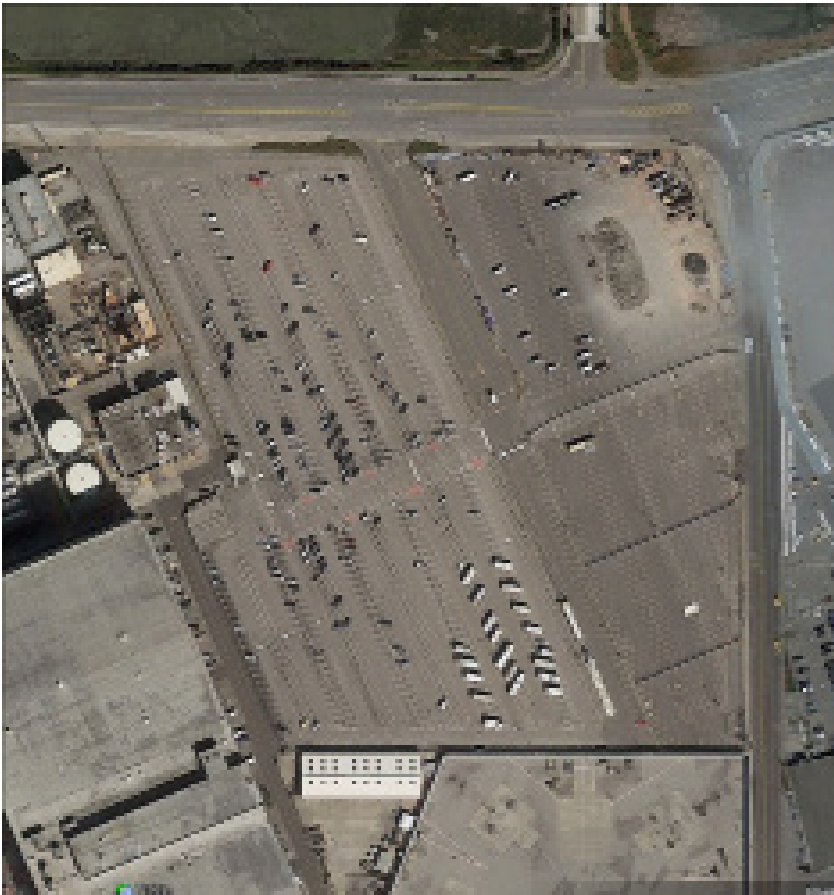


CIVIC DESIGN REVIEW: PHASE II DESIGN DEVELOPMENT PRESENTATION
SEPTEMBER 19, 2016

GTU RELOCATION PROJECT
TERMINAL 1 REDEVELOPMENT PROGRAM
SAN FRANCISCO INTERNATIONAL AIRPORT

PAULETT TAGGART
ARCHITECTS

EXISTING SITE



AERIAL VIEW



VIEW FROM NORTHEAST CORNER OF SITE



mwa architects



CIVIC DESIGN REVIEW: PHASE II DESIGN DEVELOPMENT PRESENTATION
SEPTEMBER 19, 2016

GTU RELOCATION PROJECT
TERMINAL 1 REDEVELOPMENT PROGRAM
SAN FRANCISCO INTERNATIONAL AIRPORT

PAULETT TAGGART
ARCHITECTS



mwa architects



CIVIC DESIGN REVIEW: PHASE II DESIGN DEVELOPMENT PRESENTATION
SEPTEMBER 19, 2016

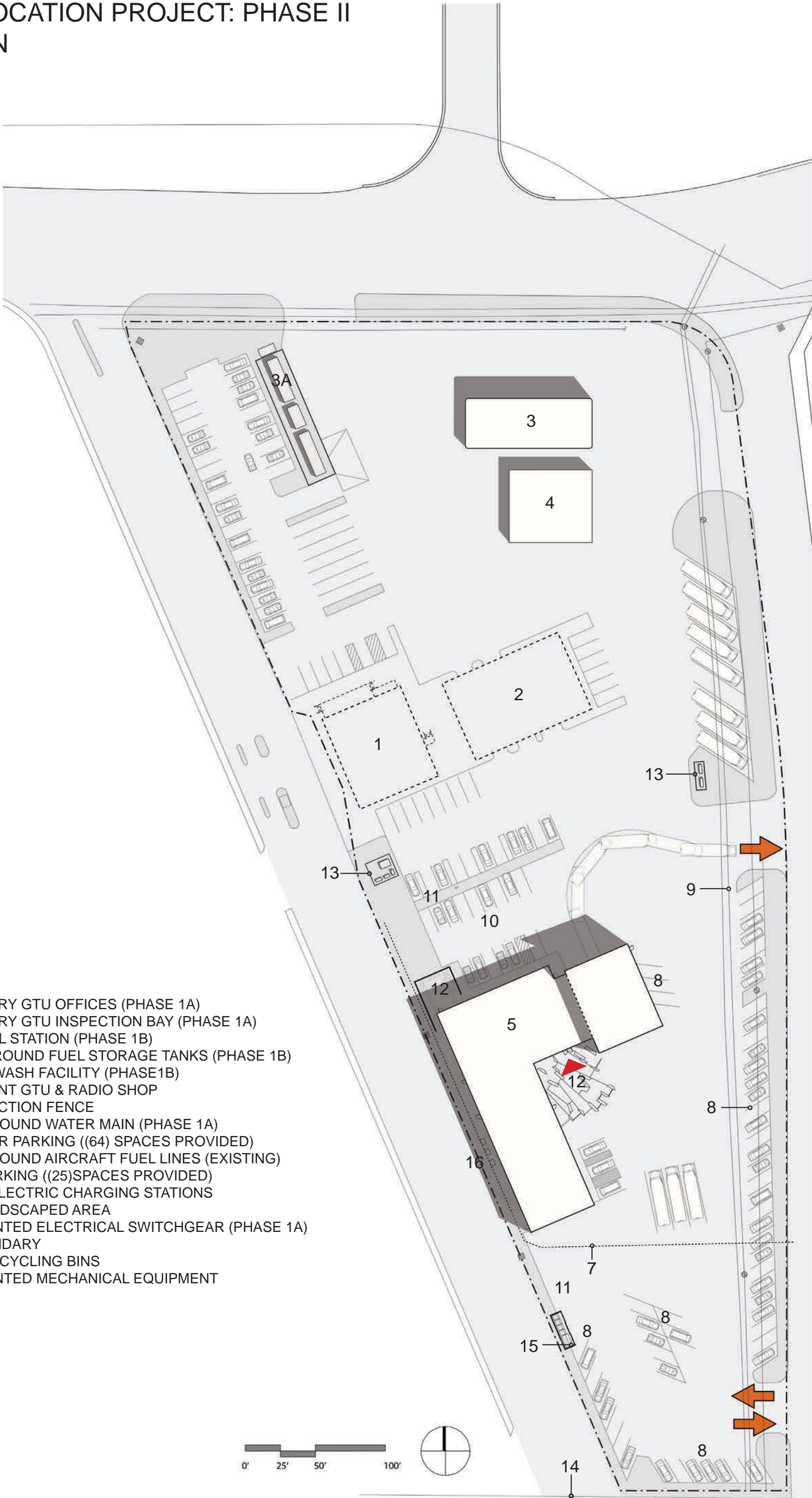
GTU RELOCATION PROJECT
TERMINAL 1 REDEVELOPMENT PROGRAM
SAN FRANCISCO INTERNATIONAL AIRPORT

PAULETT TAGGART
ARCHITECTS

GTU RELOCATION PROJECT: PHASE II
SITE PLAN

DIAGRAM KEY

- 1. TEMPORARY GTU OFFICES (PHASE 1A)
- 2. TEMPORARY GTU INSPECTION BAY (PHASE 1A)
- 3. CCSF FUEL STATION (PHASE 1B)
- 3A. ABOVE-GROUND FUEL STORAGE TANKS (PHASE 1B)
- 4. VEHICLE WASH FACILITY (PHASE 1B)
- 5. PERMANENT GTU & RADIO SHOP
- 6. CONSTRUCTION FENCE
- 7. UNDERGROUND WATER MAIN (PHASE 1A)
- 8. CUSTOMER PARKING ((64) SPACES PROVIDED)
- 9. UNDERGROUND AIRCRAFT FUEL LINES (EXISTING)
- 10. STAFF PARKING ((25)SPACES PROVIDED)
- 11. LEVEL-3 ELECTRIC CHARGING STATIONS
- 12. PATIO/LANDSCAPED AREA
- 13. PAD-MOUNTED ELECTRICAL SWITCHGEAR (PHASE 1A)
- 14. AOA BOUNDARY
- 15. TRASH/RECYCLING BINS
- 16. PAD-MOUNTED MECHANICAL EQUIPMENT



GTU RELOCATION PROJECT
TERMINAL 1 REDEVELOPMENT PROGRAM
SAN FRANCISCO INTERNATIONAL AIRPORT

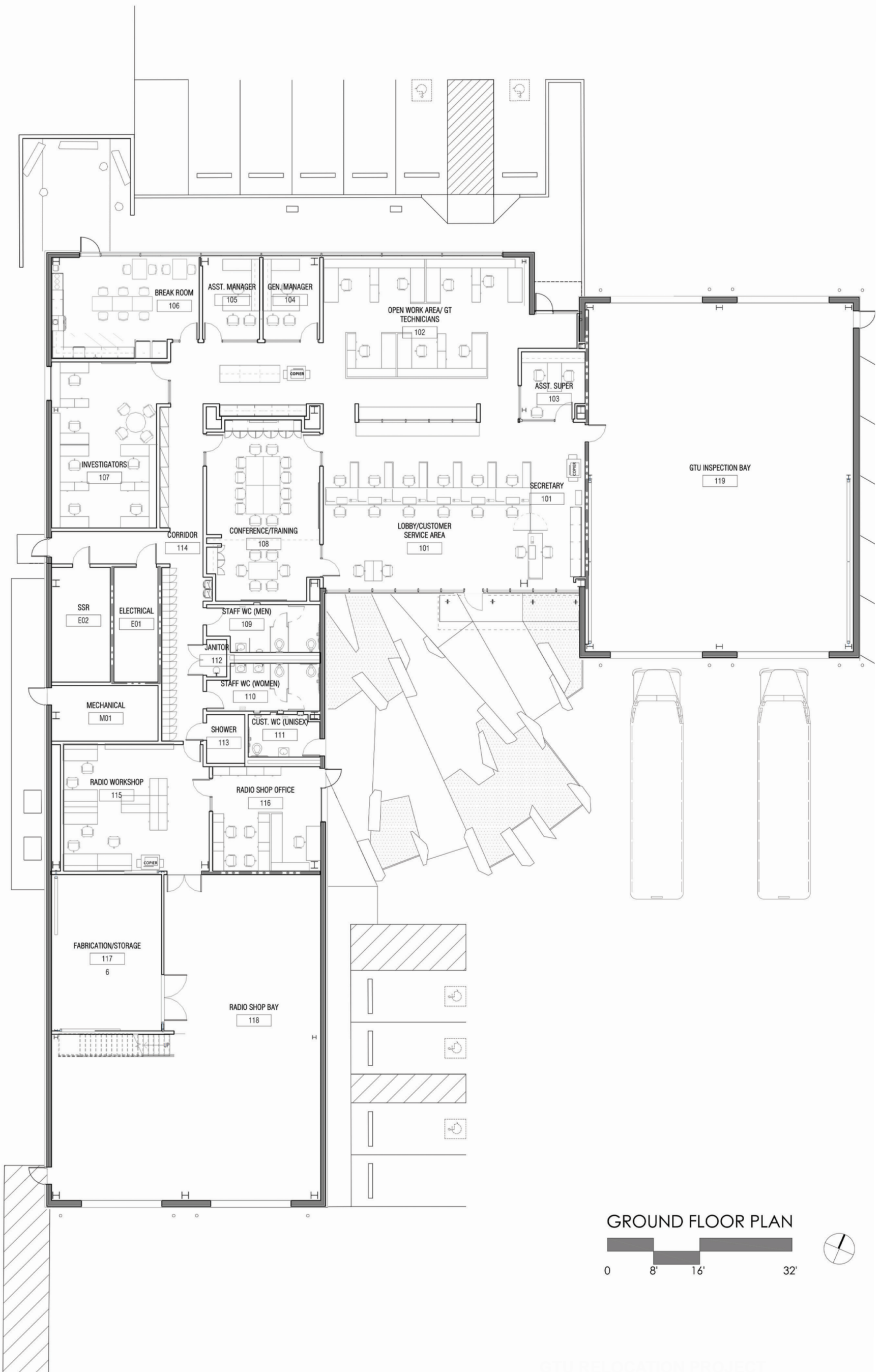


mwa architects

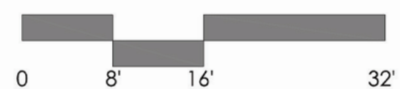


CIVIC DESIGN REVIEW: PHASE II DESIGN DEVELOPMENT PRESENTATION
SEPTEMBER 19, 2016

PAULETT TAGGART
ARCHITECTS



GROUND FLOOR PLAN



mwa architects



TERMINAL 1 REDEVELOPMENT PROGRAM
SAN FRANCISCO INTERNATIONAL AIRPORT

PAULETT TAGGART
ARCHITECTS

CIVIC DESIGN REVIEW: PHASE II DESIGN DEVELOPMENT PRESENTATION
SEPTEMBER 19, 2016



EAST ELEVATION



SOUTH ELEVATION



mwa architects



CIVIC DESIGN REVIEW: PHASE II DESIGN DEVELOPMENT PRESENTATION
SEPTEMBER 19, 2016

GTU RELOCATION PROJECT
TERMINAL 1 REDEVELOPMENT PROGRAM
SAN FRANCISCO INTERNATIONAL AIRPORT

PAULETT TAGGART
ARCHITECTS



WEST ELEVATION



NORTH ELEVATION



mwa architects



CIVIC DESIGN REVIEW: PHASE II DESIGN DEVELOPMENT PRESENTATION
SEPTEMBER 19, 2016

GTU RELOCATION PROJECT
TERMINAL 1 REDEVELOPMENT PROGRAM
SAN FRANCISCO INTERNATIONAL AIRPORT

PAULETT TAGGART
ARCHITECTS



SECTION/ELEVATION LOOKING WEST



SECTION/ELEVATION LOOKING EAST



mwa architects



CIVIC DESIGN REVIEW: PHASE II DESIGN DEVELOPMENT PRESENTATION
SEPTEMBER 19, 2016

GTU RELOCATION PROJECT
TERMINAL 1 REDEVELOPMENT PROGRAM
SAN FRANCISCO INTERNATIONAL AIRPORT

PAULETT TAGGART
ARCHITECTS



mwa architects



CIVIC DESIGN REVIEW: PHASE II DESIGN DEVELOPMENT PRESENTATION
SEPTEMBER 19, 2016

GTU RELOCATION PROJECT
TERMINAL 1 REDEVELOPMENT PROGRAM
SAN FRANCISCO INTERNATIONAL AIRPORT

PAULETT TAGGART
ARCHITECTS



mwa architects



CIVIC DESIGN REVIEW: PHASE II DESIGN DEVELOPMENT PRESENTATION
SEPTEMBER 19, 2016

GTU RELOCATION PROJECT
TERMINAL 1 REDEVELOPMENT PROGRAM
SAN FRANCISCO INTERNATIONAL AIRPORT

PAULETT TAGGART
ARCHITECTS



mwa architects



CIVIC DESIGN REVIEW: PHASE II DESIGN DEVELOPMENT PRESENTATION
SEPTEMBER 19, 2016

GTU RELOCATION PROJECT
TERMINAL 1 REDEVELOPMENT PROGRAM
SAN FRANCISCO INTERNATIONAL AIRPORT

PAULETT TAGGART
ARCHITECTS



mwa architects



CIVIC DESIGN REVIEW: PHASE II DESIGN DEVELOPMENT PRESENTATION
 SEPTEMBER 19, 2016

GTU RELOCATION PROJECT
 TERMINAL 1 REDEVELOPMENT PROGRAM
 SAN FRANCISCO INTERNATIONAL AIRPORT

PAULETT TAGGART
 A R C H I T E C T S



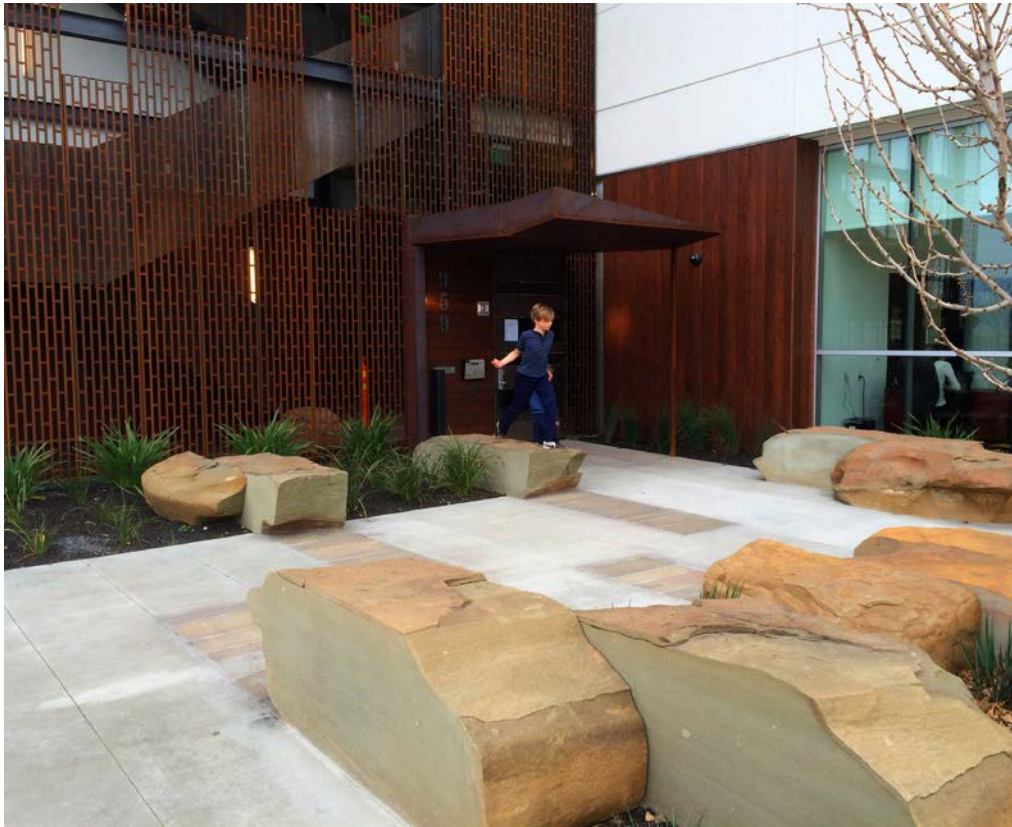
mwa architects



CIVIC DESIGN REVIEW: PHASE II DESIGN DEVELOPMENT PRESENTATION
SEPTEMBER 19, 2016

GTU RELOCATION PROJECT
TERMINAL 1 REDEVELOPMENT PROGRAM
SAN FRANCISCO INTERNATIONAL AIRPORT

PAULETT TAGGART
ARCHITECTS



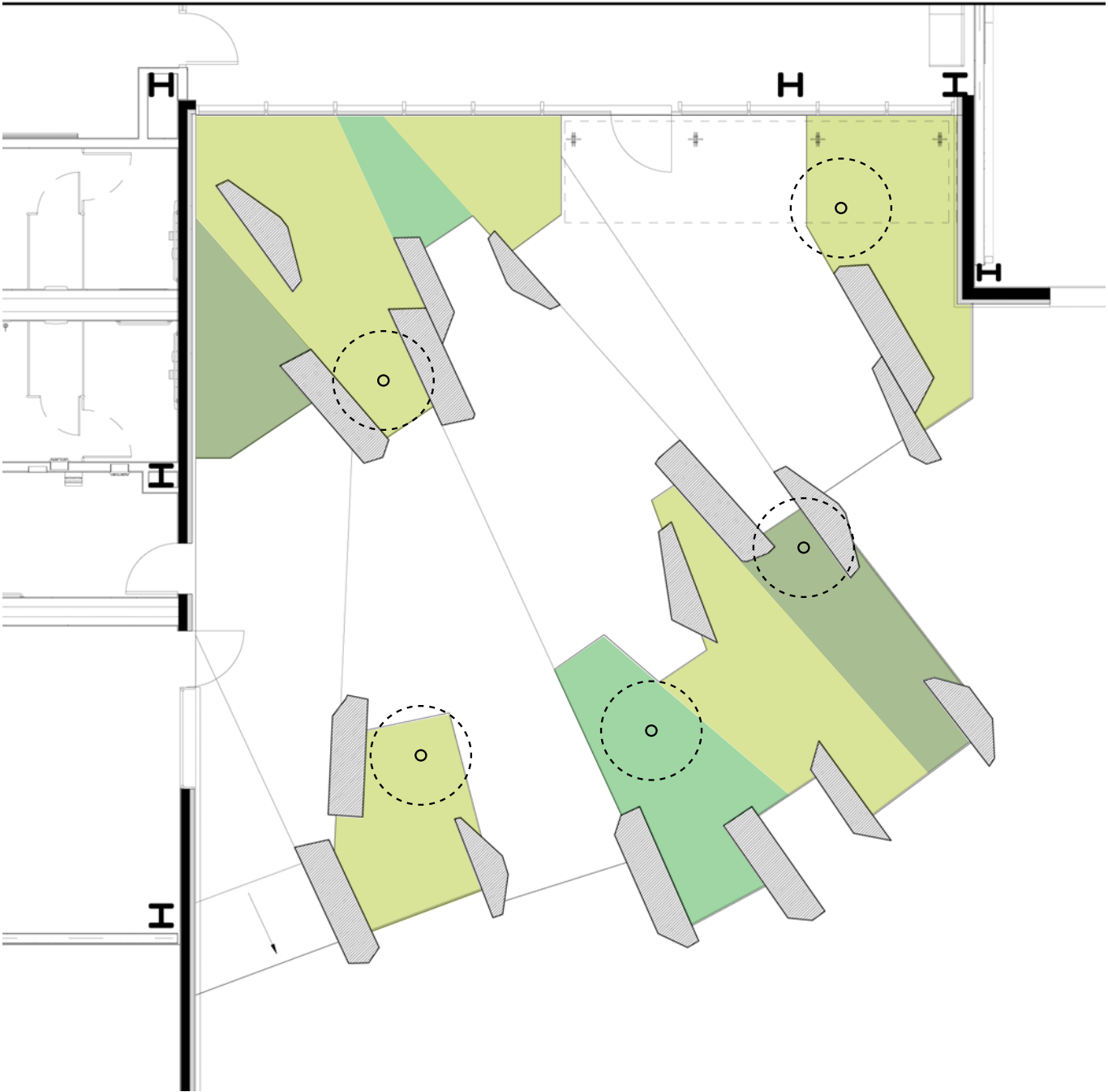
mwa architects



CIVIC DESIGN REVIEW: PHASE II DESIGN DEVELOPMENT PRESENTATION
SEPTEMBER 19, 2016

GTU RELOCATION PROJECT
TERMINAL 1 REDEVELOPMENT PROGRAM
SAN FRANCISCO INTERNATIONAL AIRPORT

PAULETT TAGGART
ARCHITECTS



scale: 1/8" = 1'

FLETCHER STUDIO



AGAVE BRACTEOSA
SQUID AGAVE
5 GAL



ALOE 'ELFIN'
BLUE ELF ALOE
5 GAL



BULBINE FRUTESCENS
ORANGE STALKED BULBINE
5 GAL



ALOE BAINSII
TREE ALOE
24" BOX



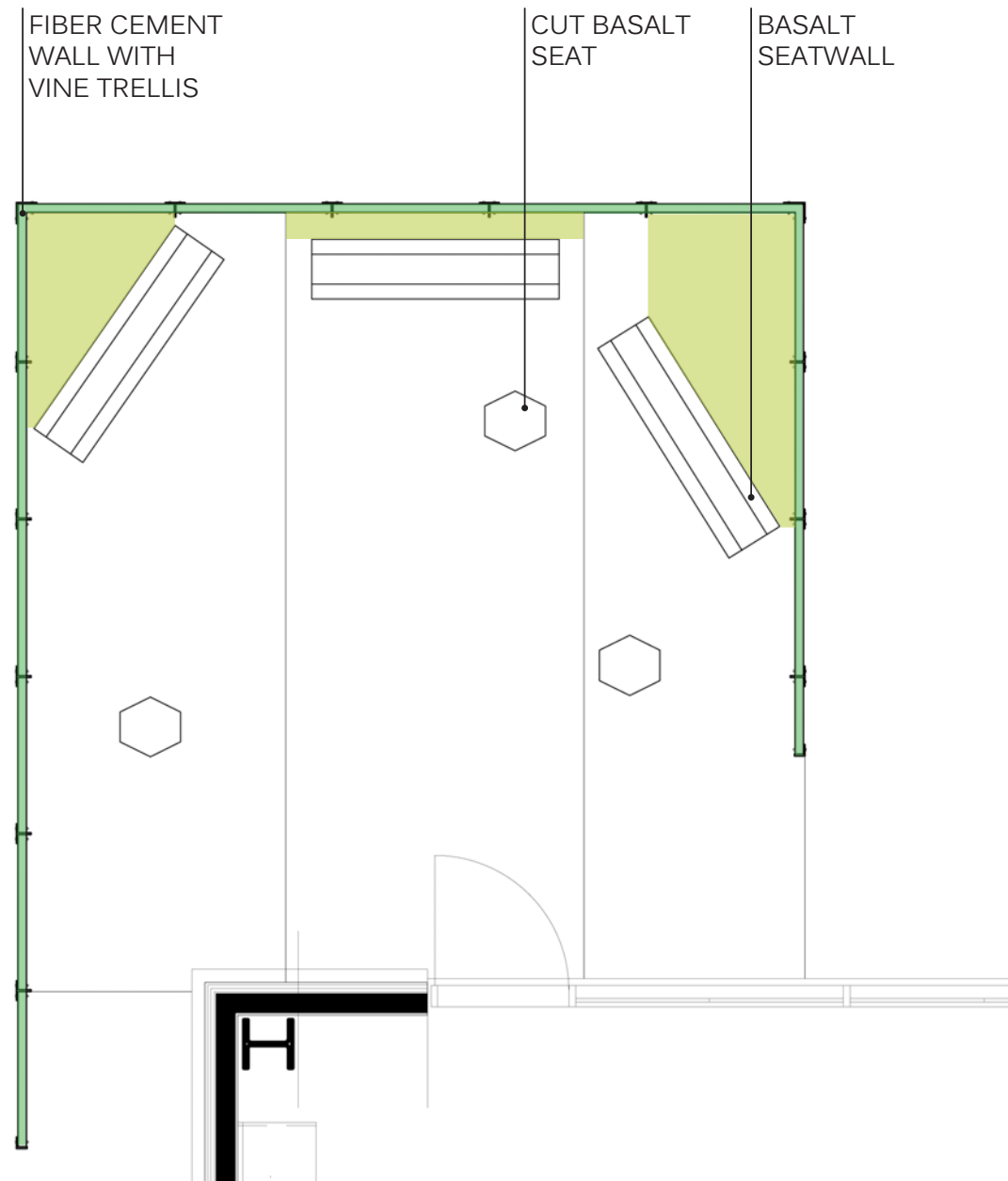
mwa architects



CIVIC DESIGN REVIEW: PHASE II DESIGN DEVELOPMENT PRESENTATION
SEPTEMBER 19, 2016

GTU RELOCATION PROJECT
TERMINAL 1 REDEVELOPMENT PROGRAM
SAN FRANCISCO INTERNATIONAL AIRPORT

PAULETT TAGGART
ARCHITECTS



scale: 1/4" = 1'

FLETCHER STUDIO



LOMANDRA 'NYALLA'
NYALLA LOMANDRA
5 GAL

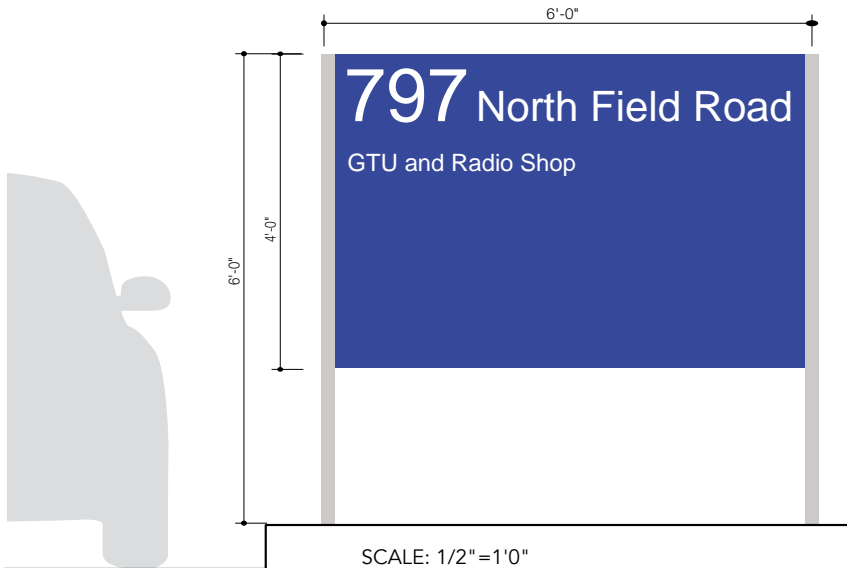


TRACHELOSPERMUM
JASMINOIDES 'MADISON'
STAR JASMINE
(ALONG FENCE)

Monumental Sign (MS)

DRAFT

SIZE
See drawing
MATERIALS
Pre-made aluminum post and panel sign system
Sign face to be either aluminum or porcelain with painted face color
Text and icons to be reflective vinyl
COLORS
Paint Color TBD by SFO
TYPOGRAPHY
Helvetica
MESSAGE
See sign message schedule
INSTALLATION
Sign legs installed in ground with concrete foundations
NOTES
All site conditions to be verified



SIGN FABRICATOR TO PROVIDE:

- Shop Drawings
- Engineering Calculations
- Layout Patterns (Copy)
- Fabrication Sample
- Local Sign Permits

lowercaseproductions

309 Lyon Street
San Francisco, CA 94117
www.lowercaseproductions.com

Client
San Francisco
International Airport

SFO Ground Transportation Unit
Monumental Sign (MS)

15 September 2016

SIGN TYPES

4.2



mwa architects



CIVIC DESIGN REVIEW: PHASE II DESIGN DEVELOPMENT PRESENTATION
SEPTEMBER 19, 2016

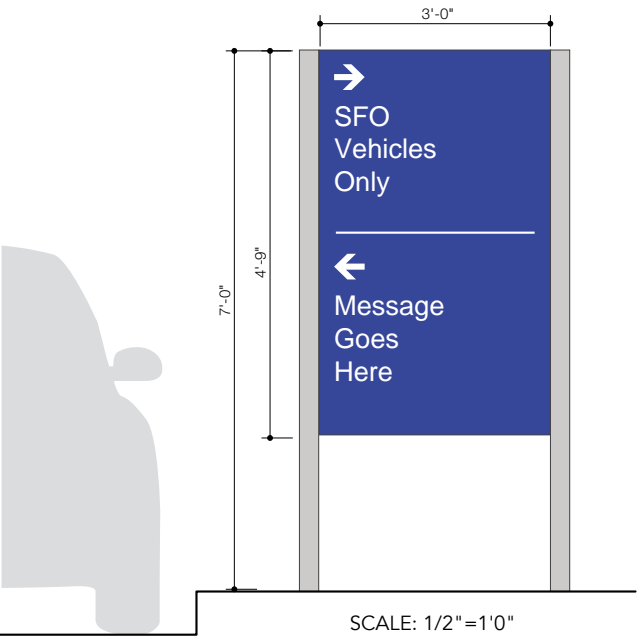
GTU RELOCATION PROJECT
TERMINAL 1 REDEVELOPMENT PROGRAM
SAN FRANCISCO INTERNATIONAL AIRPORT

PAULETT TAGGART
ARCHITECTS

Directional Wayfinding (DIR)

DRAFT

SIZE
See drawing
MATERIALS
Pre-made aluminum post and panel sign system
Sign face to be either aluminum or porcelain with painted face color
Text and icons to be reflective vinyl
COLORS
Paint Color TBD by SFO
TYPOGRAPHY
Helvetica
MESSAGE
See sign message schedule
INSTALLATION
Sign legs installed in ground with concrete foundations
NOTES
All site conditions to be verified



SIGN FABRICATOR TO PROVIDE:

- Shop Drawings
- Engineering Calculations
- Layout Patterns (Copy)
- Fabrication Sample
- Local Sign Permits

lowercaseproductions

309 Lyon Street
San Francisco, CA 94117
www.lowercaseproductions.com

Client
San Francisco
International Airport

SFO Ground Transportation Unit
Directional Wayfinding (DR-R)

15 September 2016

SIGN TYPES

4.3



mwa architects



CIVIC DESIGN REVIEW: PHASE II DESIGN DEVELOPMENT PRESENTATION
SEPTEMBER 19, 2016

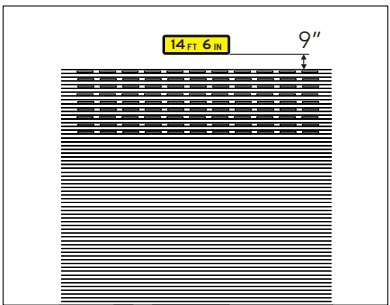
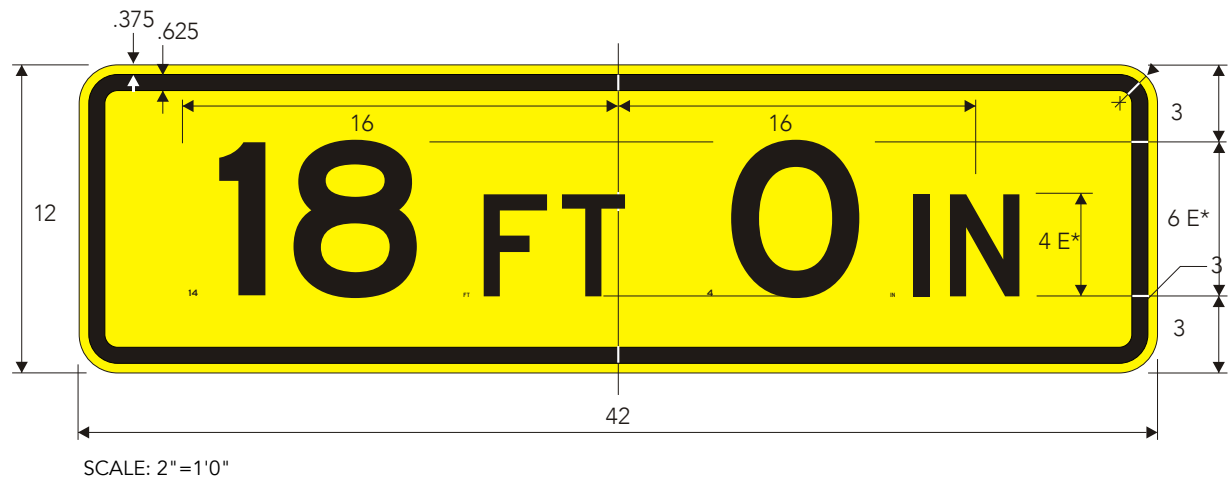
GTU RELOCATION PROJECT
TERMINAL 1 REDEVELOPMENT PROGRAM
SAN FRANCISCO INTERNATIONAL AIRPORT

PAULETT TAGGART
ARCHITECTS

Vertical Clearance (VC)

DRAFT

SIZE
See drawing
MATERIALS
Aluminum base panel with rounded corners. Sign face color to be reflective yellow vinyl. Text and sign frame to be black vinyl.
COLORS
Black for Text Reflective Yellow
TYPOGRAPHY
Series E2000 Normal
MESSAGE
See sign message schedule
INSTALLATION
Mounted to exterior wall of buildings with bolts, centered above garage door openings
NOTES
All site conditions to be verified



SIGN FABRICATOR TO PROVIDE:

- ☒ Shop Drawings
- ☐ Engineering Calculations
- ☒ Layout Patterns (Copy)
- ☒ Fabrication Sample
- ☐ Local Sign Permits

lowercaseproductions

309 Lyon Street
San Francisco, CA 94117
www.lowercaseproductions.com

Client
San Francisco
International Airport

SFO Ground Transportation Unit
Vertical Clearance (VC)

15 September 2016

SIGN TYPES

4.6



mwa architects



CIVIC DESIGN REVIEW: PHASE II DESIGN DEVELOPMENT PRESENTATION
SEPTEMBER 19, 2016

GTU RELOCATION PROJECT
TERMINAL 1 REDEVELOPMENT PROGRAM
SAN FRANCISCO INTERNATIONAL AIRPORT

PAULETT TAGGART
ARCHITECTS

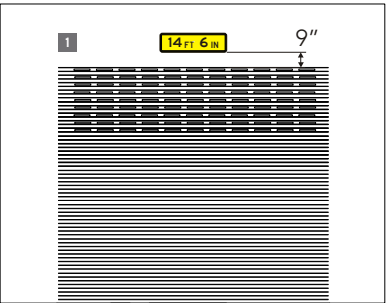
Garage Bay Number (GBN)

DRAFT

SIZE
See drawing
MATERIALS
Aluminum base panel. Sign face color to be reflective yellow vinyl. Text and sign frame to be black vinyl.
COLORS
Black for Text Reflective Yellow
TYPOGRAPHY
Series E2000 Normal
MESSAGE
See sign message schedule
INSTALLATION
Mounted to exterior wall of buildings with bolts, left aligned with the left edge of the opening and vertically aligned with the vertical clearance signs.
NOTES
All site conditions to be verified



SCALE: 2"=1'0"



SIGN FABRICATOR TO PROVIDE:

- ☒ Shop Drawings
- ☐ Engineering Calculations
- ☒ Layout Patterns (Copy)
- ☒ Fabrication Sample
- ☐ Local Sign Permits

lowercaseproductions

309 Lyon Street
San Francisco, CA 94117
www.lowercaseproductions.com

Client
San Francisco
International Airport

SFO Ground Transportation Unit
Garage Bay Number (GBN)

15 September 2016

SIGN TYPES

4.7

GTU RELOCATION PROJECT
TERMINAL 1 REDEVELOPMENT PROGRAM
SAN FRANCISCO INTERNATIONAL AIRPORT



mwa architects



CIVIC DESIGN REVIEW: PHASE II DESIGN DEVELOPMENT PRESENTATION
SEPTEMBER 19, 2016

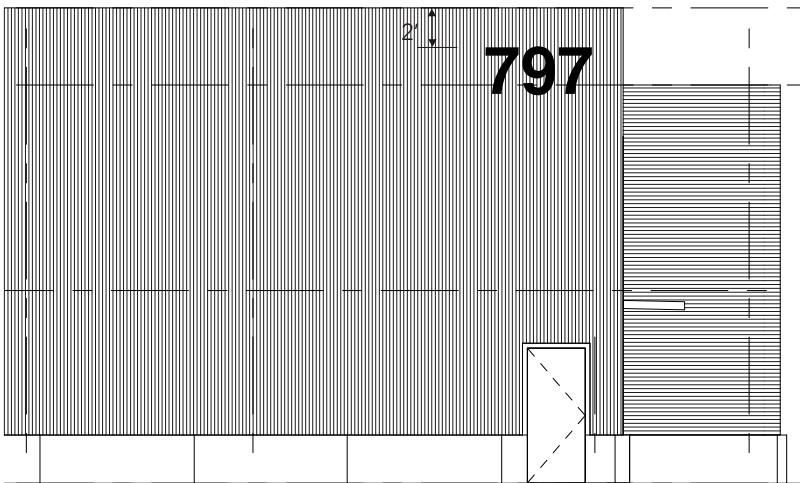
PAULETT TAGGART
ARCHITECTS

Building Number (BN)

DRAFT

SIZE
See drawing
MATERIALS
Solid black dimensional characters 6" thick
COLORS
Black
TYPOGRAPHY
Helvetica
MESSAGE
See artwork
INSTALLATION
Mounted on exterior wall of building.
NOTES
All site conditions to be verified

2.5' 797



SIGN FABRICATOR TO PROVIDE:

- Shop Drawings
- Engineering Calculations
- Layout Patterns (Copy)
- Fabrication Sample
- Local Sign Permits

lowercaseproductions

309 Lyon Street
San Francisco, CA 94117
www.lowercaseproductions.com

Client
San Francisco
International Airport

SFO Ground Transportation Unit
Building Number (BN)

15 September 2016

SIGN TYPES

4.8



mwa architects



CIVIC DESIGN REVIEW: PHASE II DESIGN DEVELOPMENT PRESENTATION
SEPTEMBER 19, 2016

GTU RELOCATION PROJECT
TERMINAL 1 REDEVELOPMENT PROGRAM
SAN FRANCISCO INTERNATIONAL AIRPORT

PAULETT TAGGART
ARCHITECTS

Vinyl Graphic (VG)

DRAFT

SIZE
See drawing
MATERIALS
Vinyl Graphic
COLORS
White
TYPOGRAPHY
Helvetica
MESSAGE
See sign message schedule
INSTALLATION
Mounted on exterior glass
NOTES
All site conditions to be verified

4

Ground Transportation Unit

797 North Field Road

3

Hours:

7:00am-5:00pm

Saturday, Sunday and

Holidayrs Closed

SIGN FABRICATOR TO PROVIDE:

- ☒ Shop Drawings
- ☐ Engineering Calculations
- ☒ Layout Patterns (Copy)
- ☒ Fabrication Sample
- ☐ Local Sign Permits

<div>lowercaseproductions</div> <div>309 Lyon Street San Francisco, CA 94117 www.lowercaseproductions.com</div>	<div>Client</div> <div>San Francisco International Airport</div>	<div>SFO Ground Transportation Unit</div> <div>Vinyl Graphic (VG)</div> <div>15 September 2016</div>	<div>SIGN TYPES</div> <div>4.9</div>
---	--	--	--------------------------------------



mwa architects



CIVIC DESIGN REVIEW: PHASE II DESIGN DEVELOPMENT PRESENTATION
SEPTEMBER 19, 2016

GTU RELOCATION PROJECT
TERMINAL 1 REDEVELOPMENT PROGRAM
SAN FRANCISCO INTERNATIONAL AIRPORT

PAULETT TAGGART
ARCHITECTS