



# San Francisco International Airport Terminal 1

Civic Design Review\_Schematic Design

June 10, 2016



San Francisco International Airport  
© All rights reserved, Andrew Choi



# SFO T1 CIVIC DESIGN REVIEW

## SCHEMATIC DESIGN

The project is a replacement terminal and concourse facility for San Francisco International Airport Terminal 1 including Boarding Area B and C. Terminal 1 and Boarding Area B were originally finished in 1961, with the addition of Boarding Area C completed in 1984. Originally designed with 29 domestic gates, the facilities have become outdated both in airport operations and passenger experience as set forth in SFO’s cultural design guideline, the Revenue Enhancement and Customer Hospitality principles (The REACH document).

The new Terminal 1 and Boarding Areas B and C will operate 34 international and domestic flights, accommodating forecasted growth. Most importantly this project addresses operational efficiencies such as checked baggage screening and delivery, passenger security scanning, operational and administration connectivity to allow this airport to best support the region’s air travel needs.

In addition to Airport Operations, the renovation of Terminal One is part of series of solutions that will allow SFO to meet its aspiration of becoming ‘zero net energy’ within 5 years. This means the total amount of energy used by the Airport on an annual basis is roughly equal to the amount of renewable energy created on the site. Many design decisions will be made with these energy goals in mind.

### Capturing Naturalism-The Terrarium

For passengers, the life and energy of an airport occurs on the interior, with passengers processing and circulating inside the building. The exterior of an airport is noisy, has toxic fumes and is often dirty and dangerous. Passenger vehicles, shuttles, Aircraft, baggage handling and fueling occur outside the protective shell of the Airport envelope.

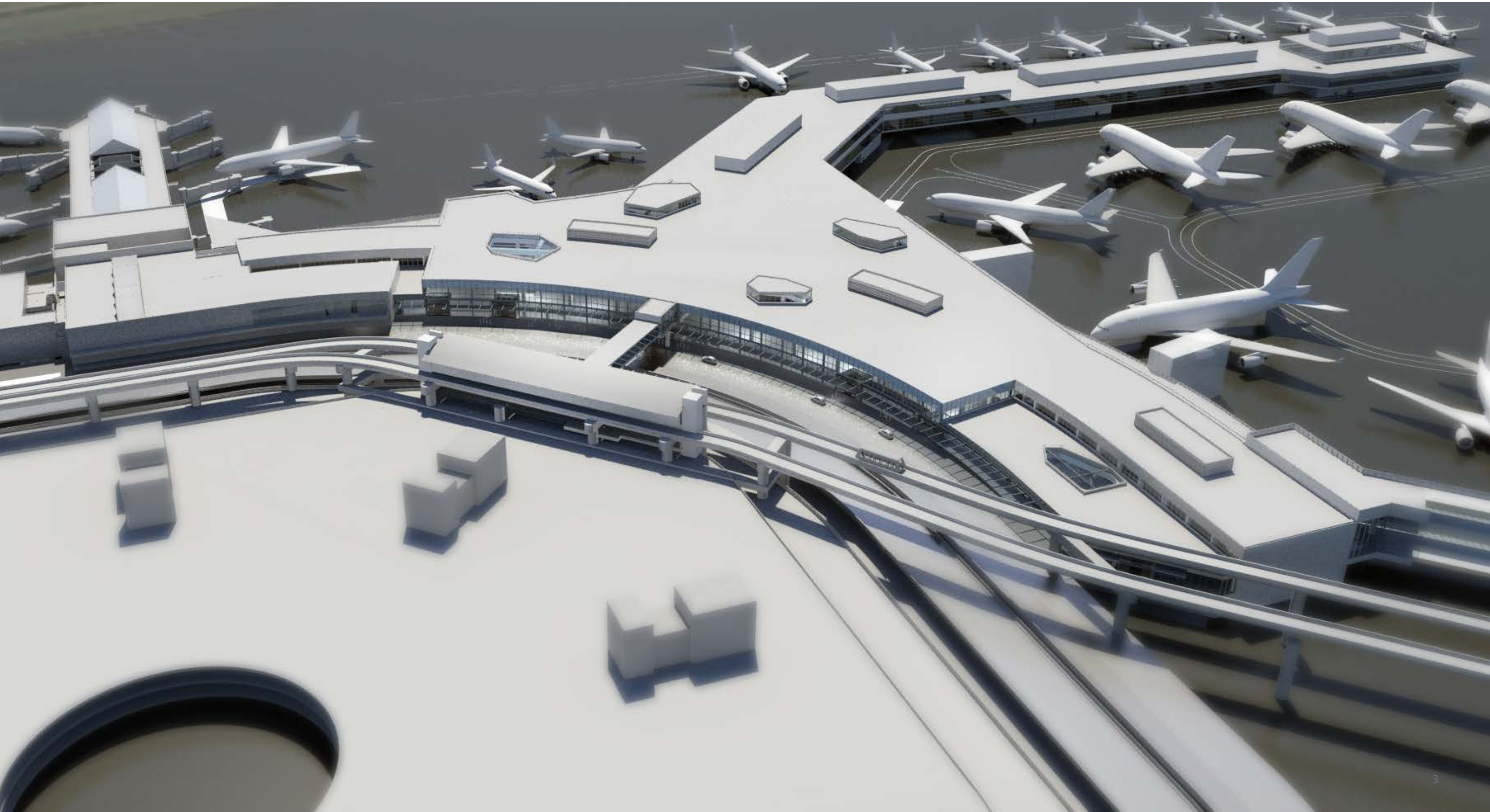
Our design attitude about Terminal 1 is guided by an image of a terrarium. A clean, glassy vitrine holds the delicate ecosystem of living organisms, providing light, clean air, food and water to the inhabitants within. This ecosystem displays its life during the day and the night through simple transparency of the glassy enclosure.

This project will continue a masterplan hierarchy and that allows the International Terminal to remain as the “Jewel” of the Airport, primary in Architectural importance. Its features and materials create the context that the domestic terminals respond to. Terminal 1, as with the Airport’s previous capital improvements, will be designed “inside-out” to improve the passenger experience and will feature a Bay Area airport journey.



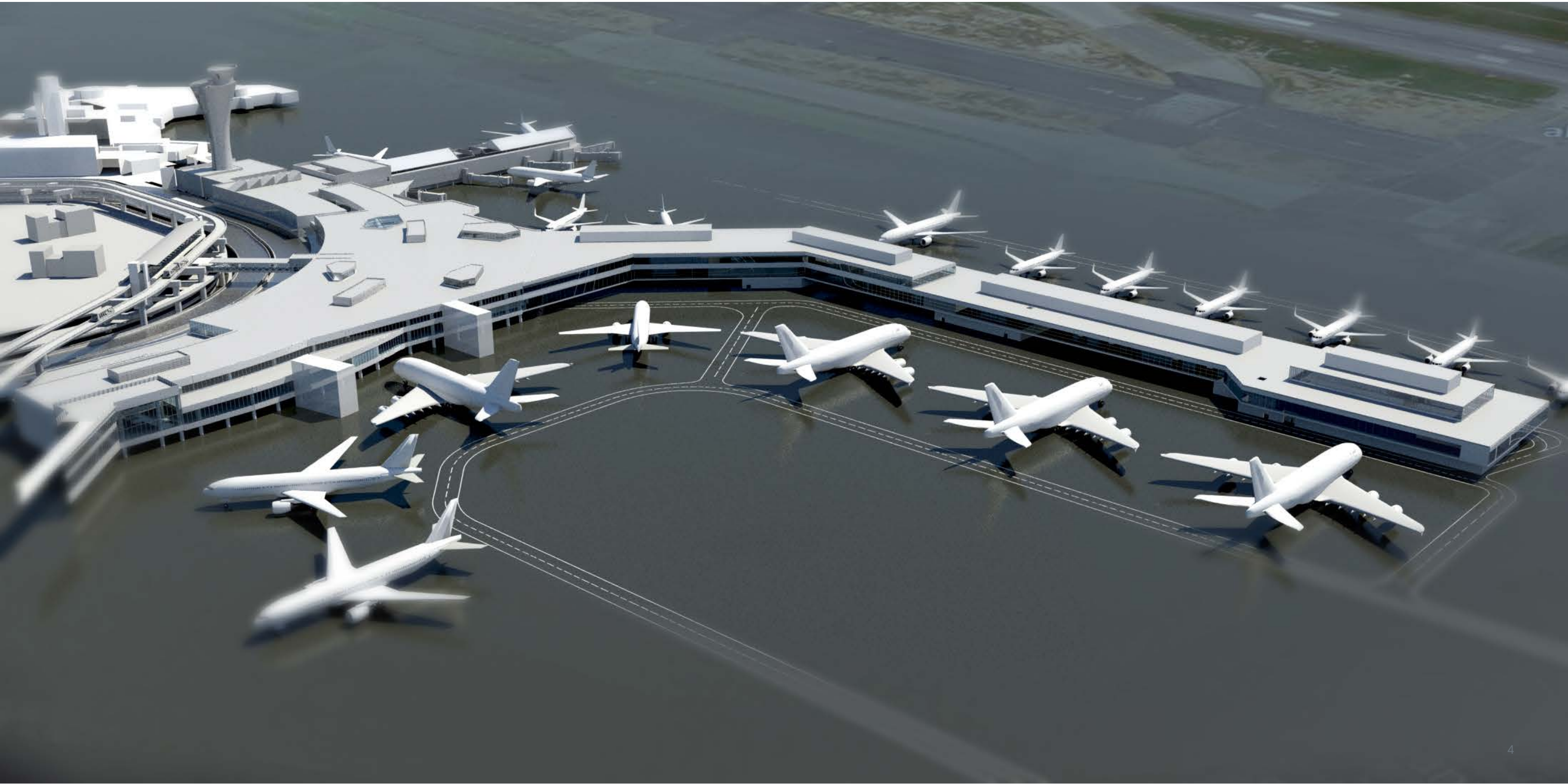


# TERMINAL LANDSIDE AERIAL VIEW

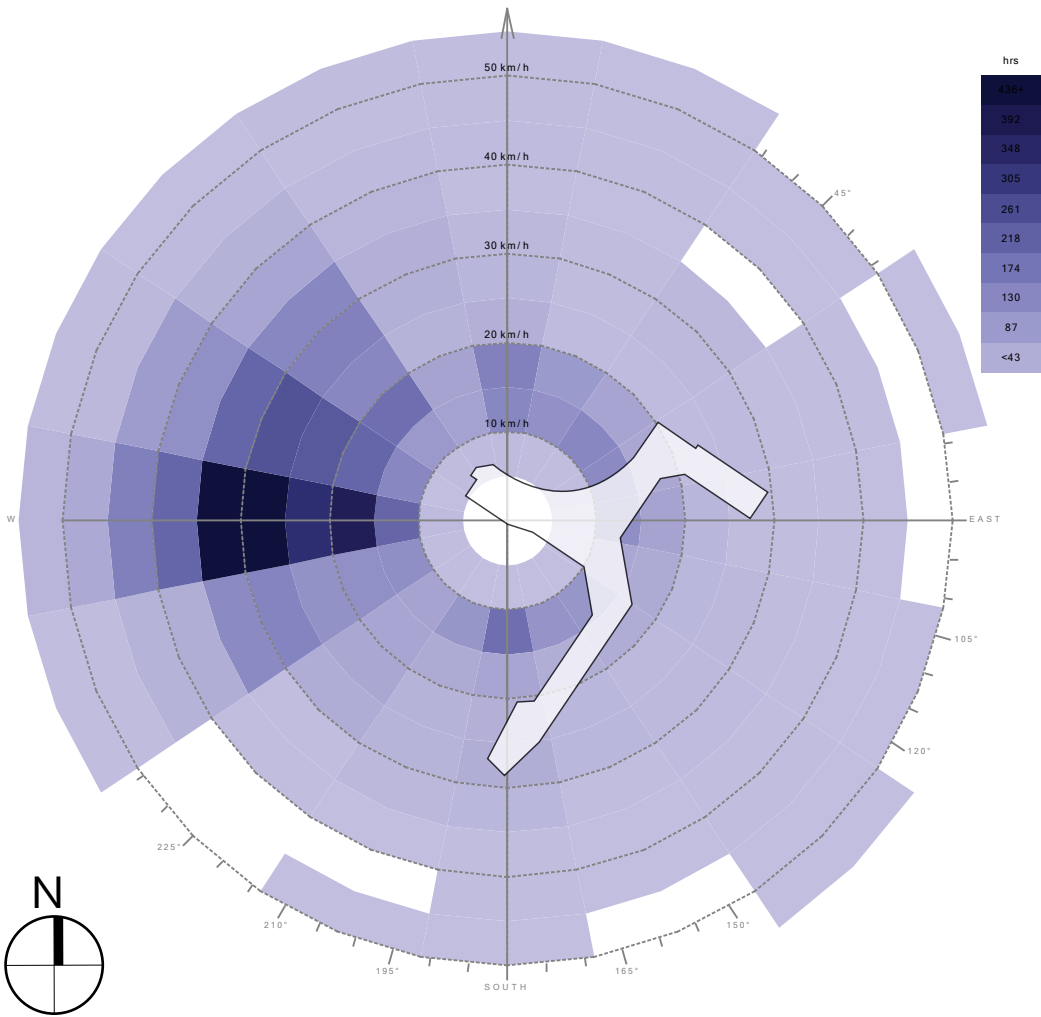




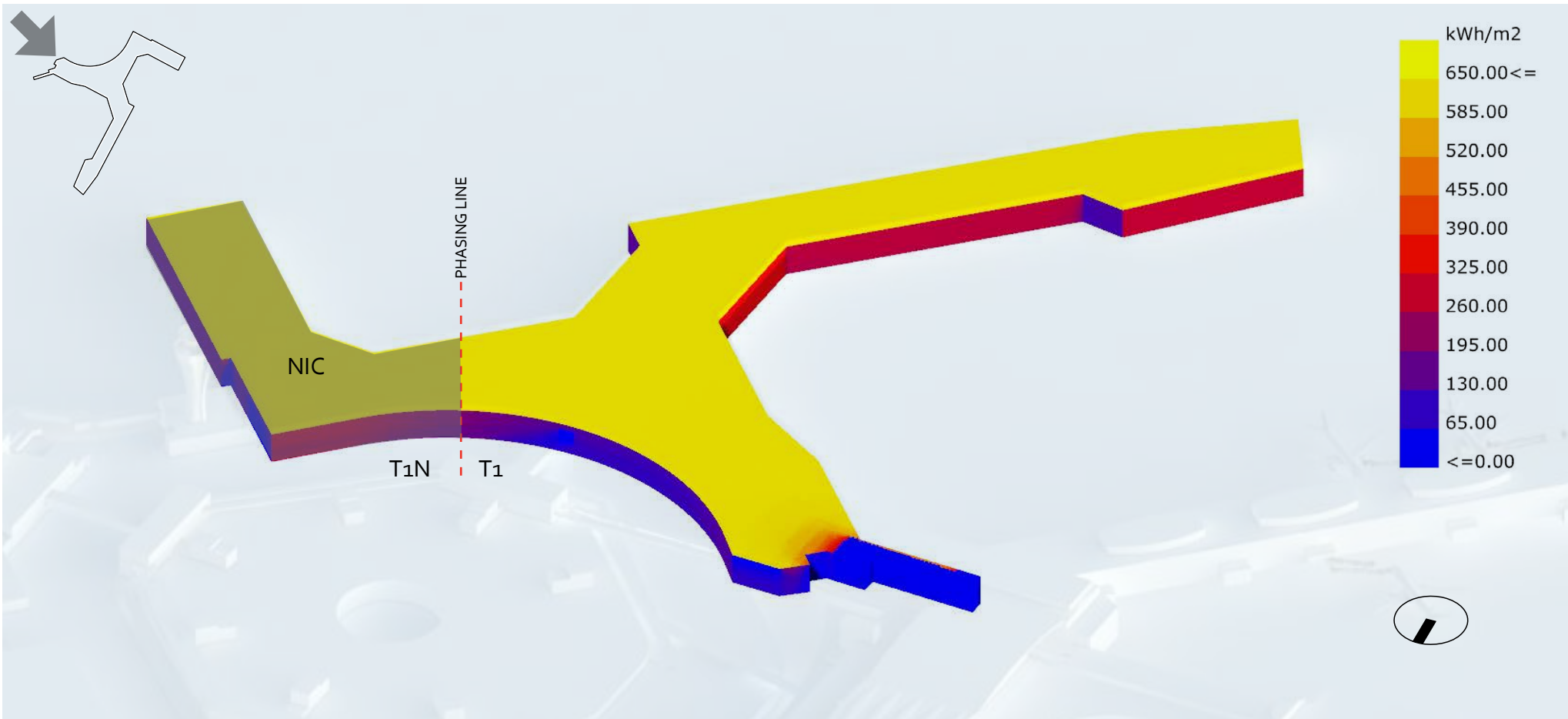
TERMINAL AIRSIDE AERIAL VIEW



# ENVIRONMENTAL FACTORS



JUNE 21 - SEPTEMBER 21

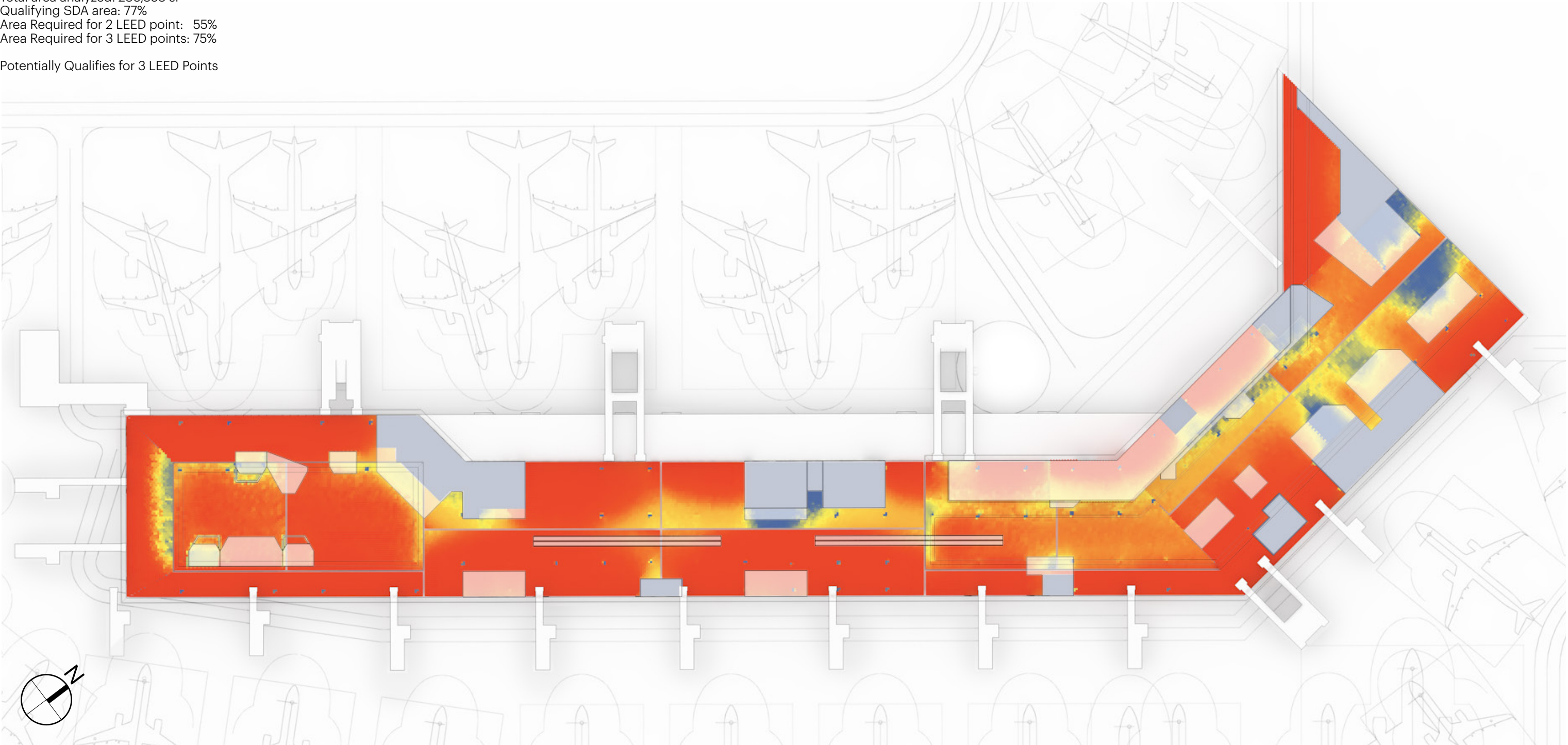




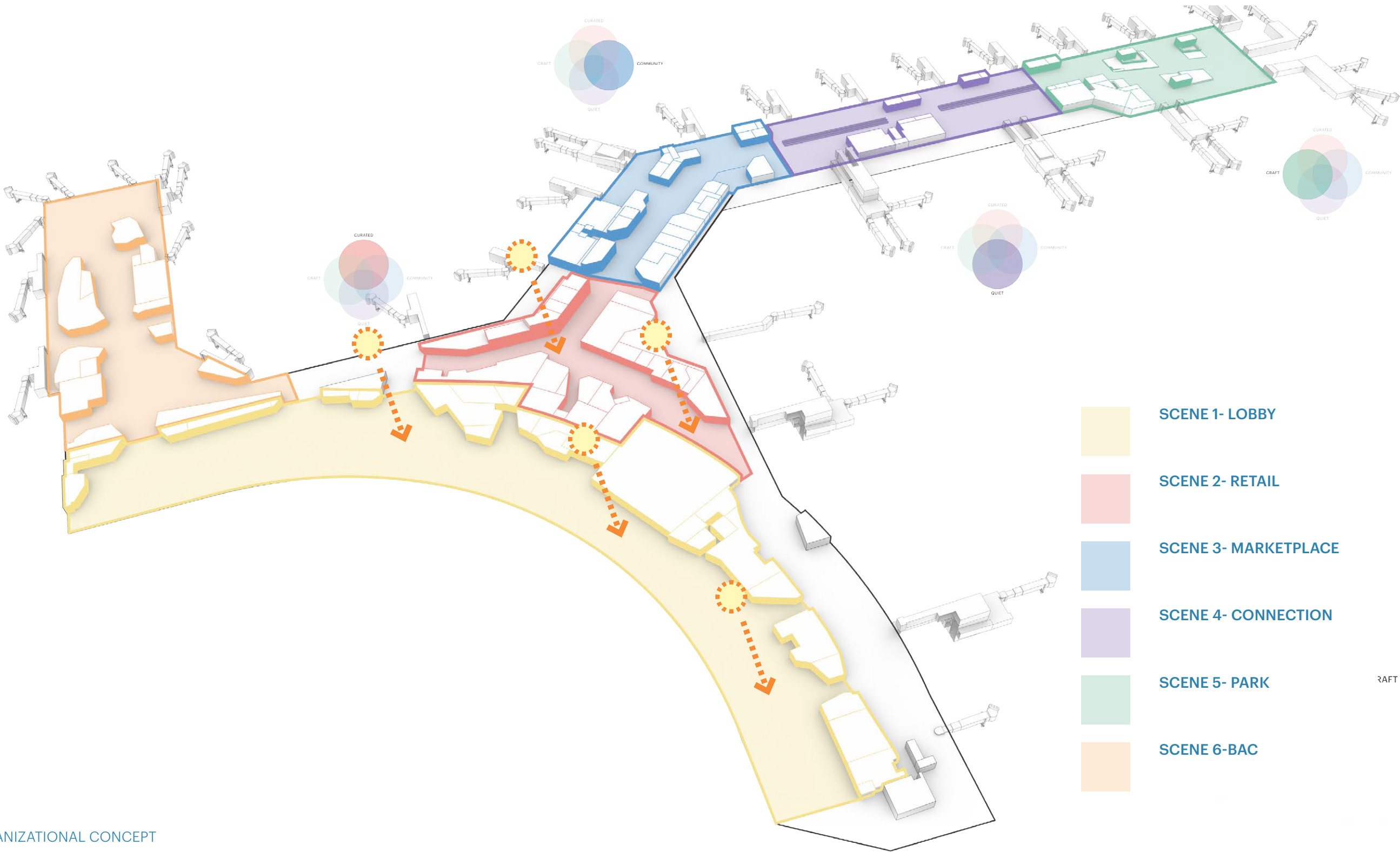


Total area analyzed: 236,353 sf  
Qualifying SDA area: 77%  
Area Required for 2 LEED point: 55%  
Area Required for 3 LEED points: 75%

Potentially Qualifies for 3 LEED Points

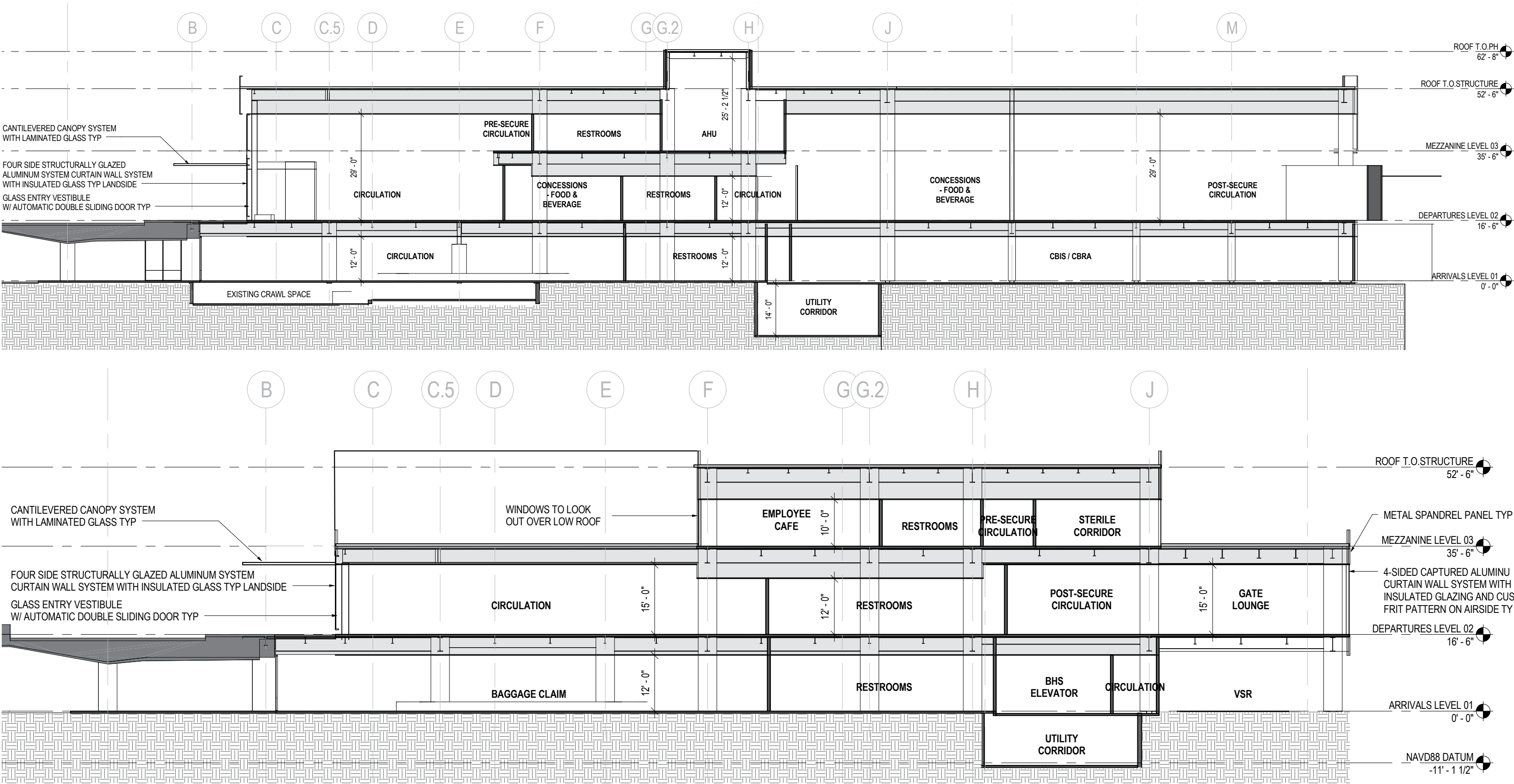


# DAYLIGHTING APPROACH



ORGANIZATIONAL CONCEPT

OVERALL BUILDING SECTIONS

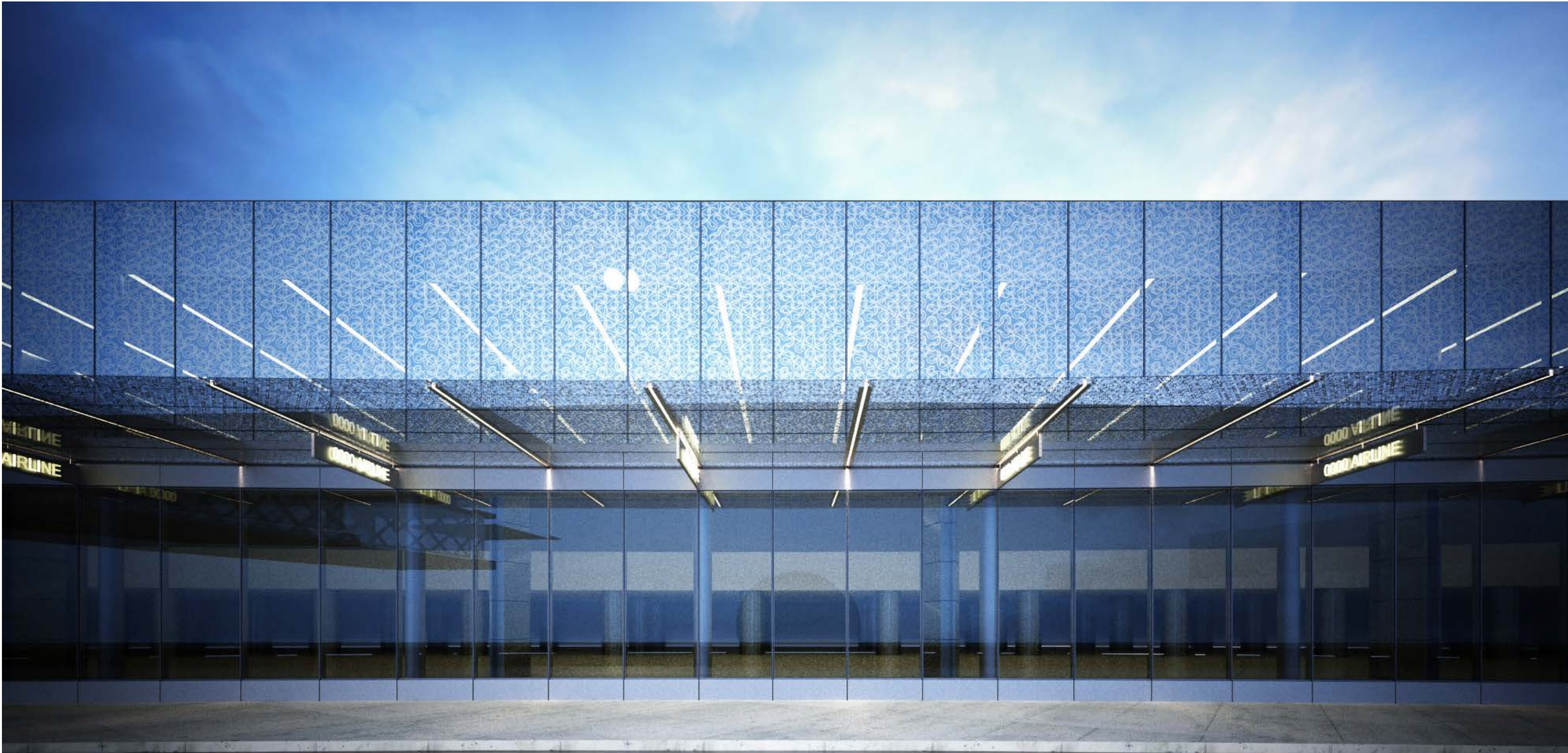








# TERMINAL CURBSIDE EXPRESSION





# TERMINAL VESTIBULE EXPRESSION





# CANOPY AT HIGH SIDE ROOF

HIGH PERFORMANCE IGU, UNITIZED

FRITTED GLASS

BUILT-UP STEEL CANOPY MEMBER

LED LIGHT FIXTURE

AIRLINE SIGNAGE

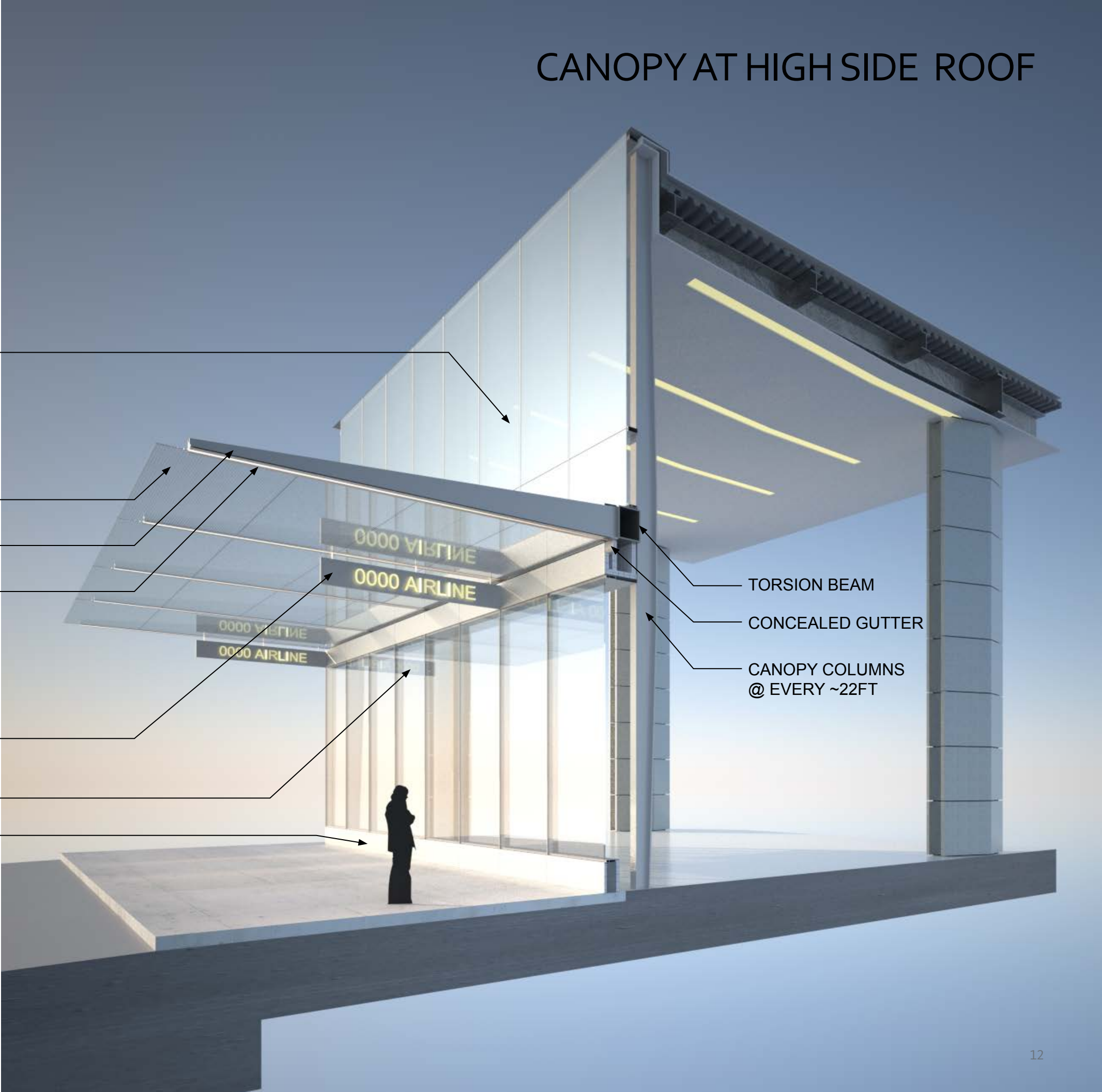
LOW IRON IGU

BASE SS PANEL @ 1'6"

TORSION BEAM

CONCEALED GUTTER

CANOPY COLUMNS  
@ EVERY ~22FT



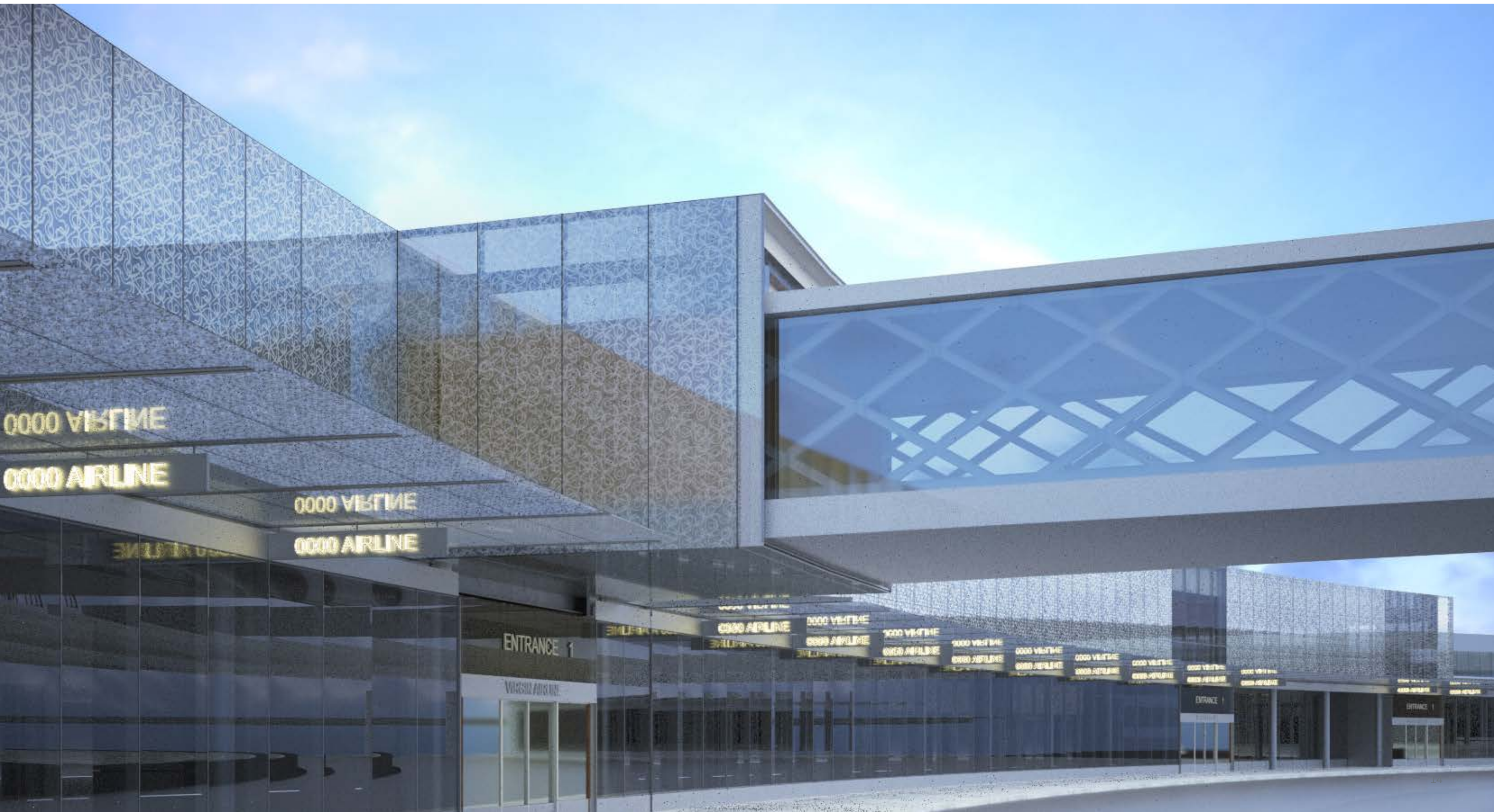


CANOPY AT LOW SIDE ROOF





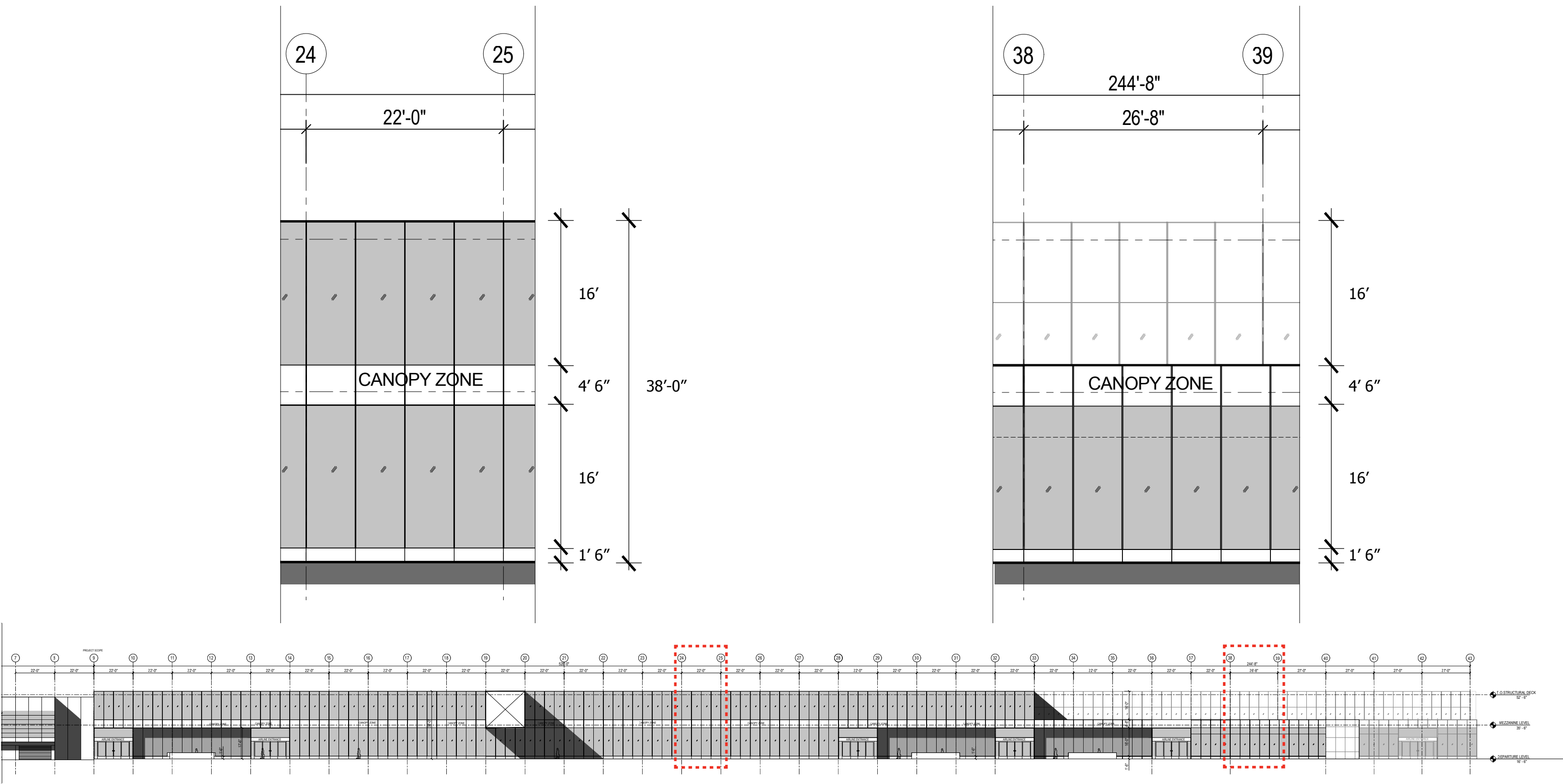
# TERMINAL CURBSIDE VIEW - OPTION 1





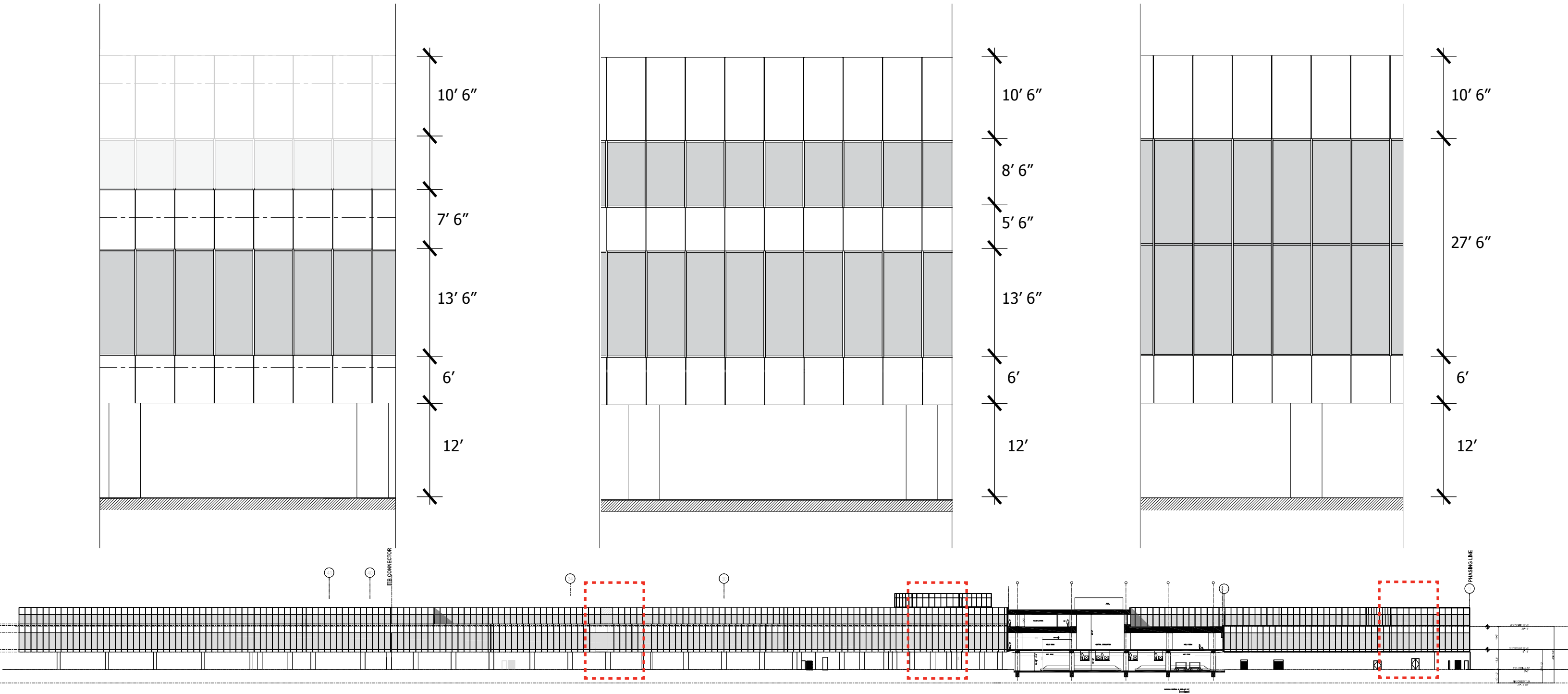


# TERMINAL LANDSIDE ELEVATION

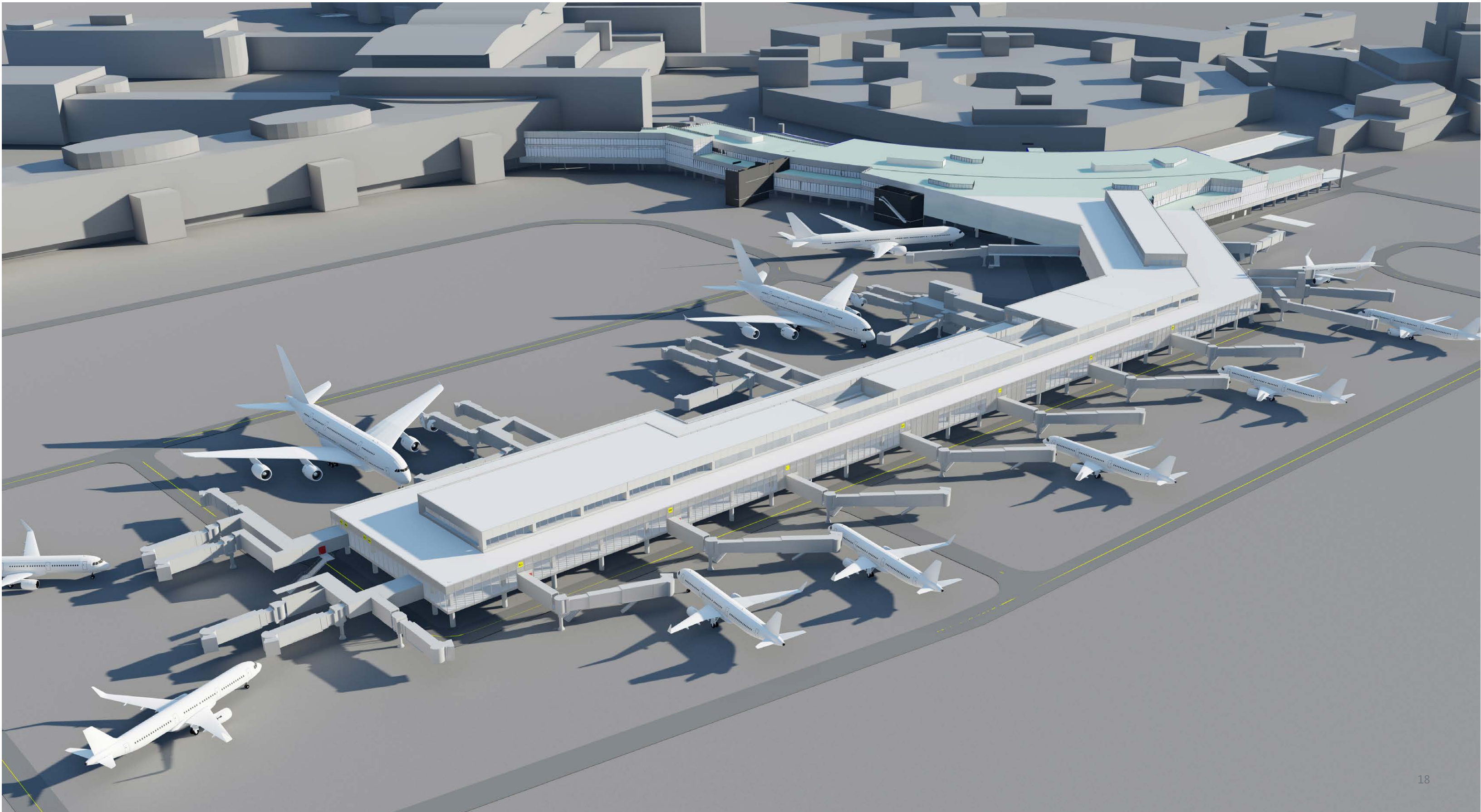




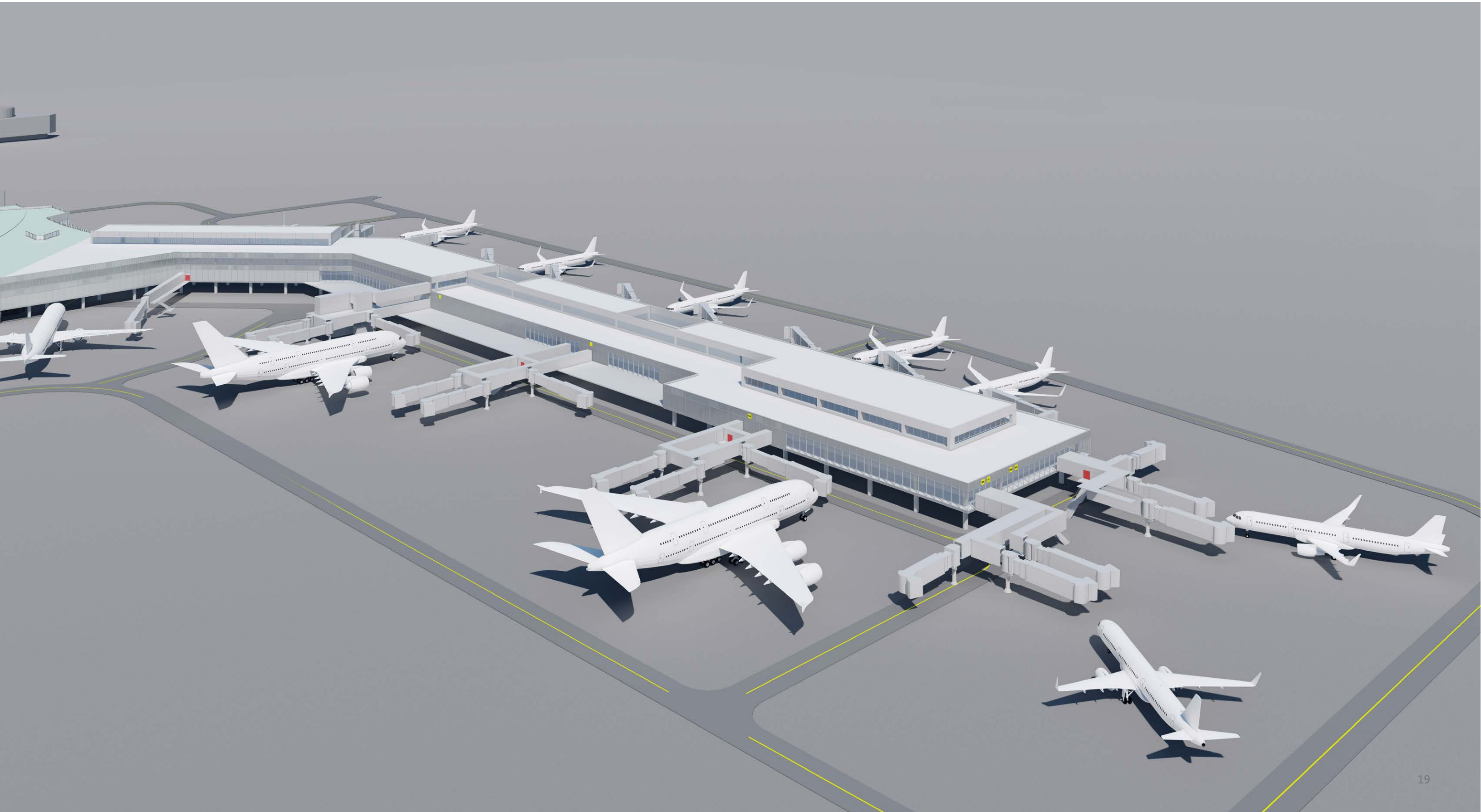
# TERMINAL AIRSIDE ELEVATION



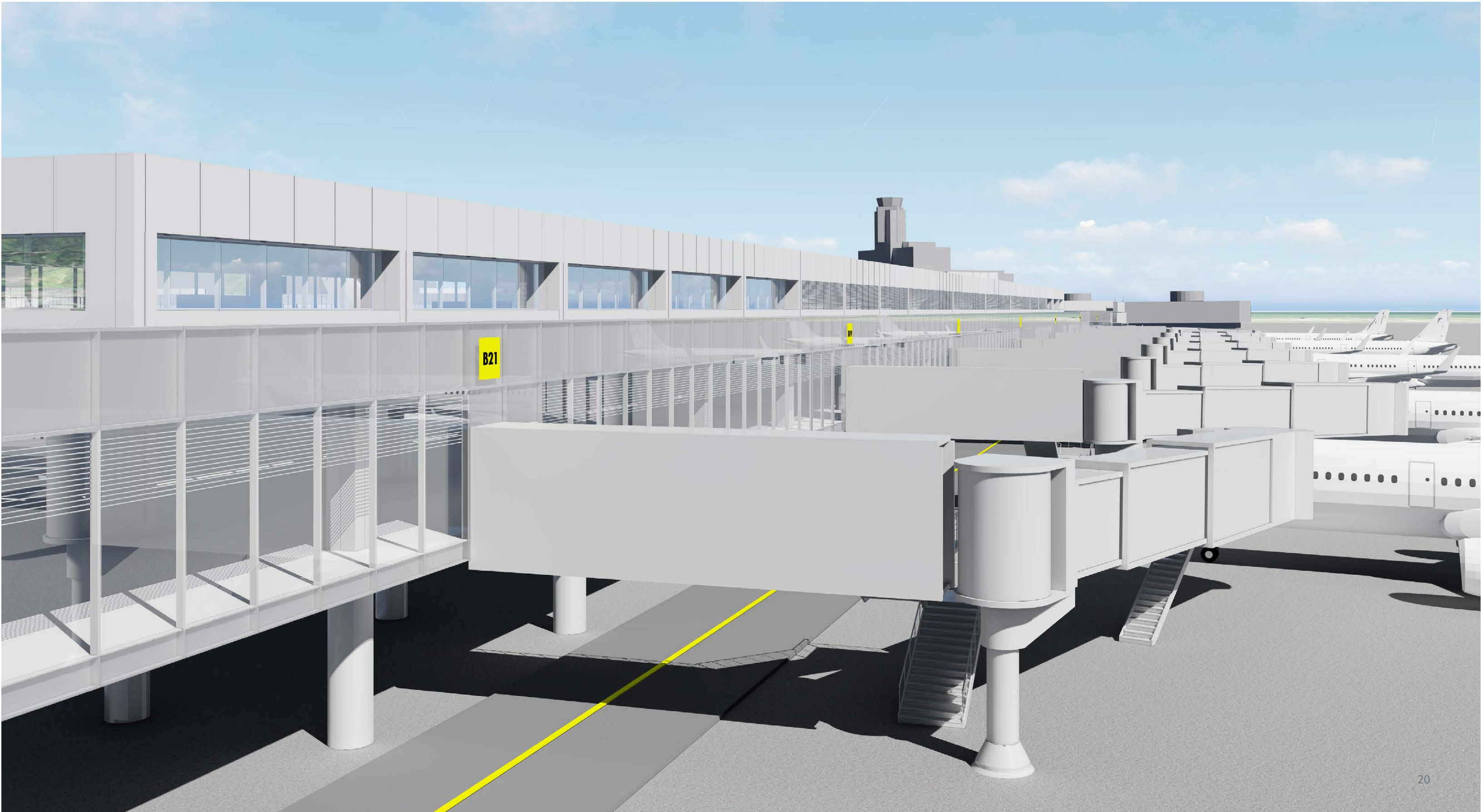










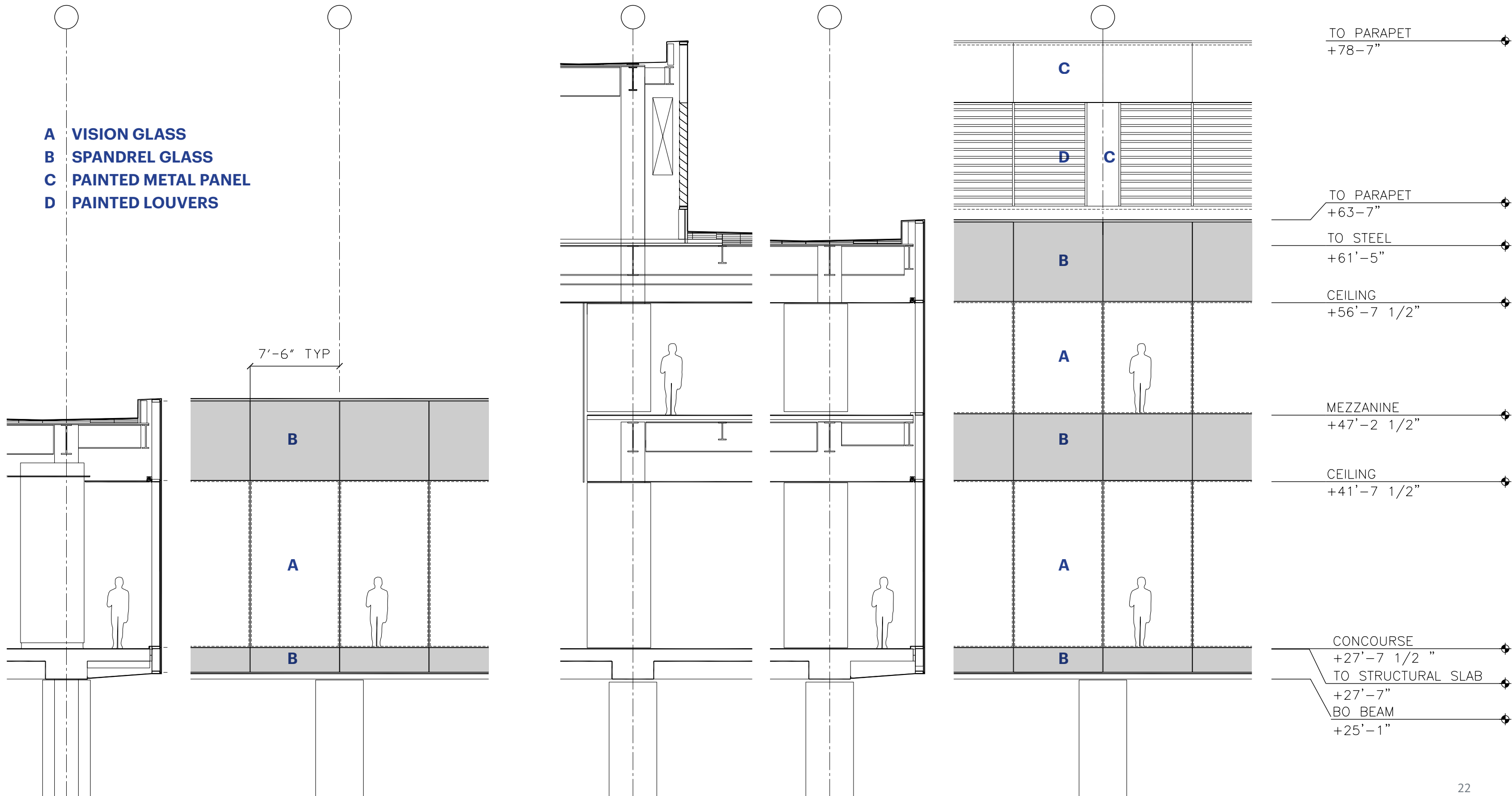








## BAB - SECTIONS/ELEVATIONS





A long-exposure photograph of a night sky filled with numerous light trails from satellites or spacecraft. The trails are primarily white and yellow, with some red and blue streaks, crisscrossing the dark sky. In the foreground, a body of water reflects the city lights and the sky. The city skyline is visible along the horizon, with various lights and structures. The overall scene is a blend of natural and artificial light, creating a dynamic and visually striking image.

THANK YOU