

# San Francisco International Airport Terminal 2 Buildback CDRC Presentation

April 16, 2018



# Design Drivers

## Sense of Place



- Connection to Airfield
- Views to Mountains and Bay
- Access to Fresh Air, Sunshine, Fog
- Guest and Employee Hospitality

## Surprise & Delight



- Public Observation Deck Retreat
- Opportunity for Enhanced Technology
- Museum Collection and Storytelling

## Impactful Interventions

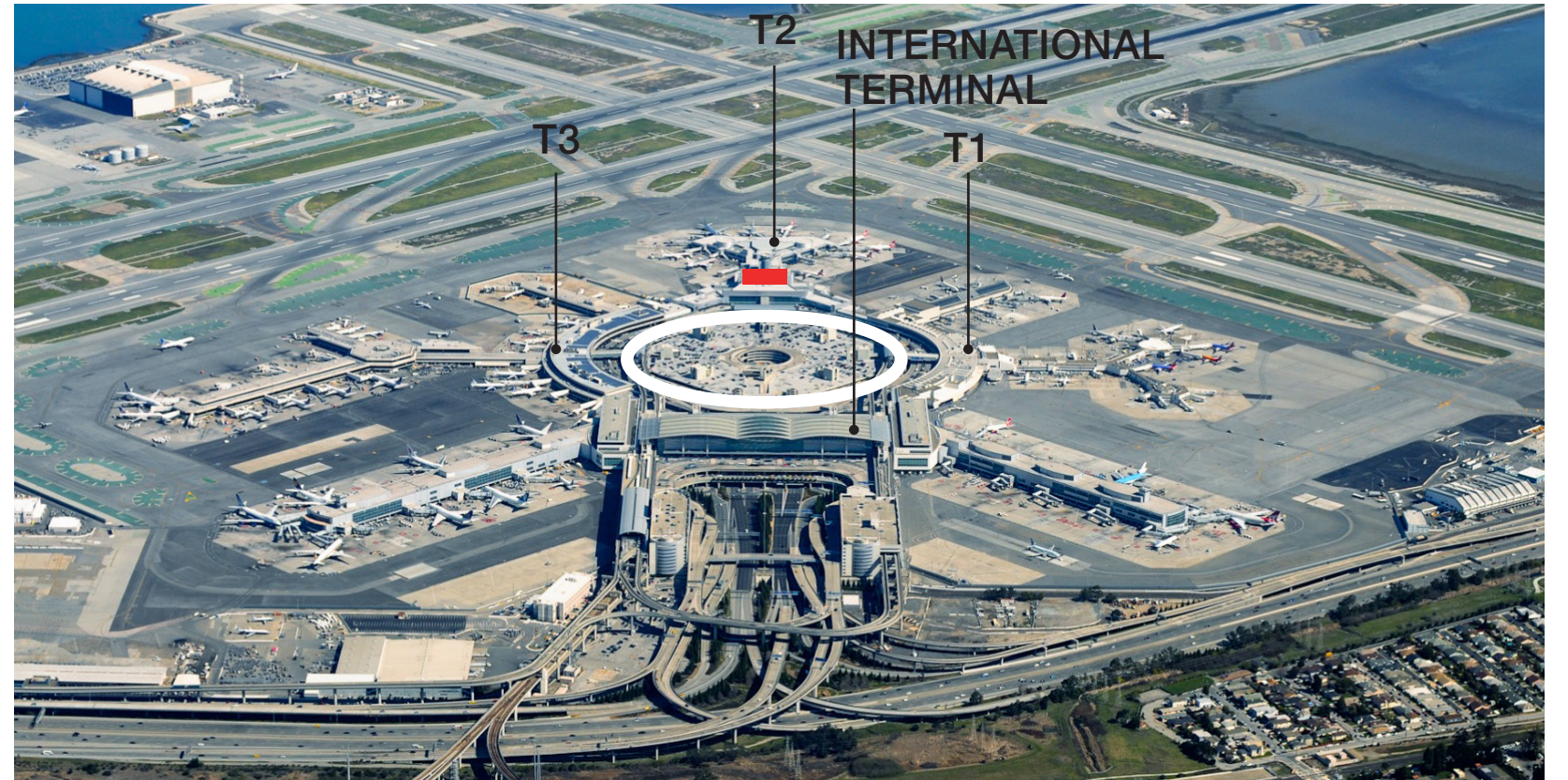


- Vertical Circulation
- Airline Lounge Entry Experience
- Meet and Greet Lounge
- Observation Deck

# A Close Connection to The Airfield

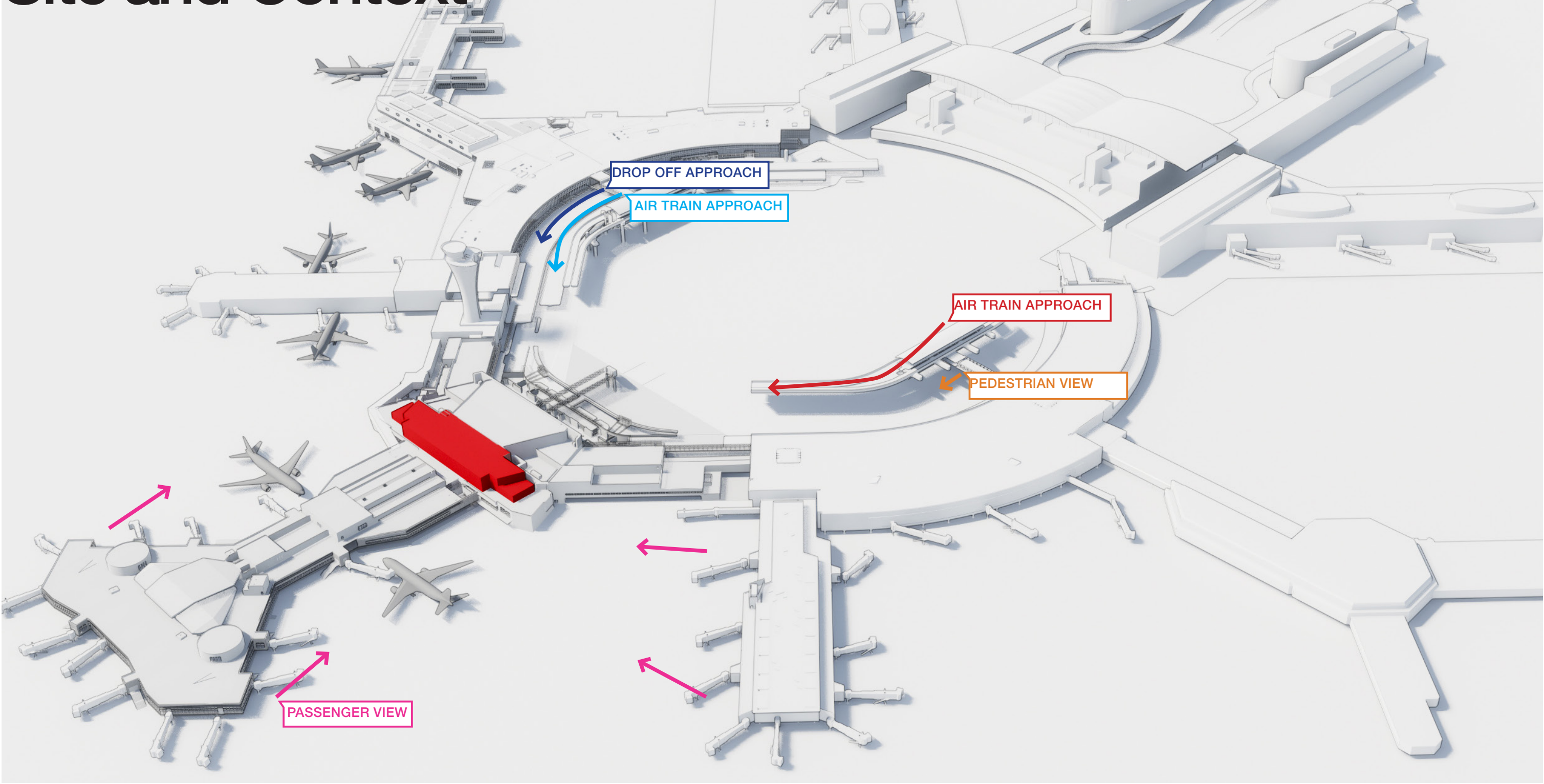


A History of Public Observation and Engagement at SFO



Site and Context

# Site and Context



# Previous / Existing Conditions



Curbside View after Tower Demolition



Proposed View

# Previous / Existing Conditions



Previous Airtrain View



Proposed Airtrain View

# Previous / Existing Conditions



Previous Aerial View



Proposed Aerial View

# Airside

Future T3 Connector

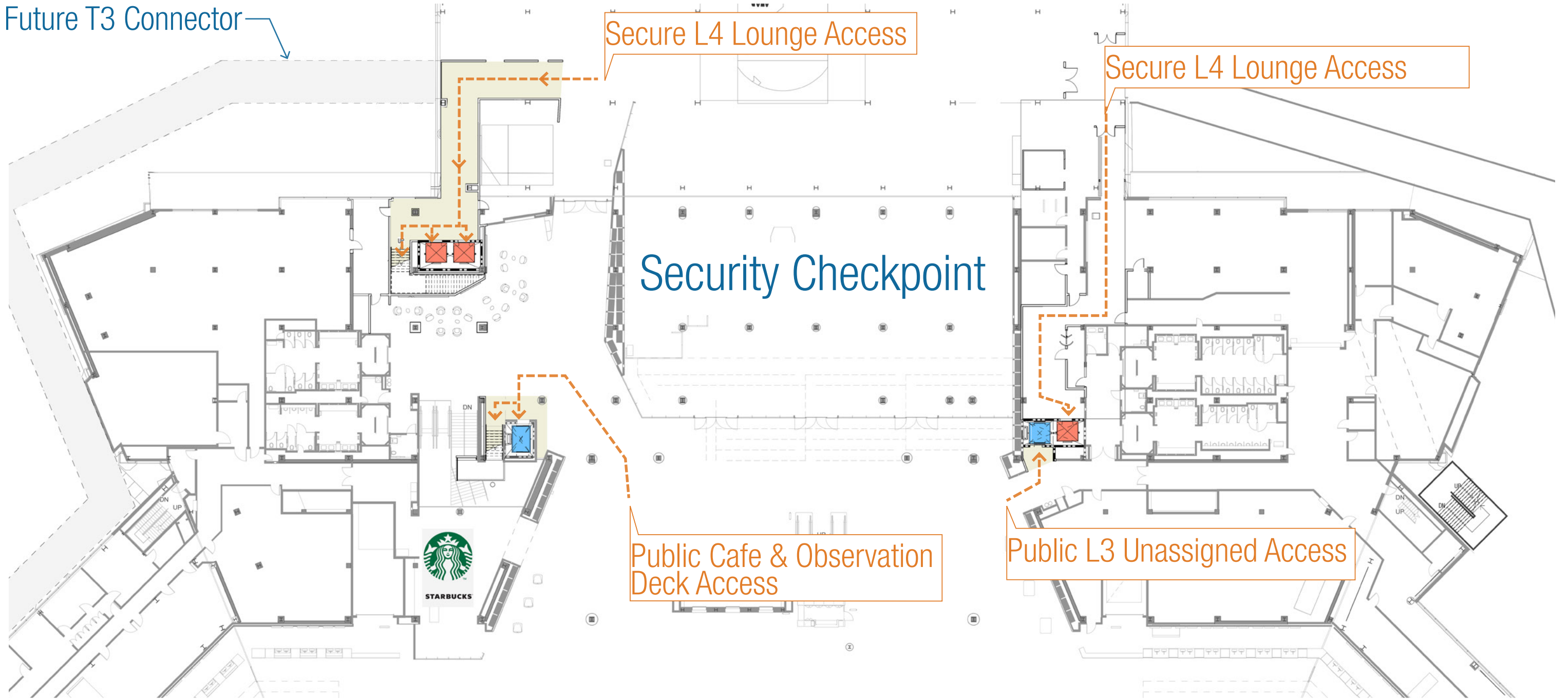
Secure L4 Lounge Access

Secure L4 Lounge Access

Security Checkpoint

Public Cafe & Observation Deck Access

Public L3 Unassigned Access

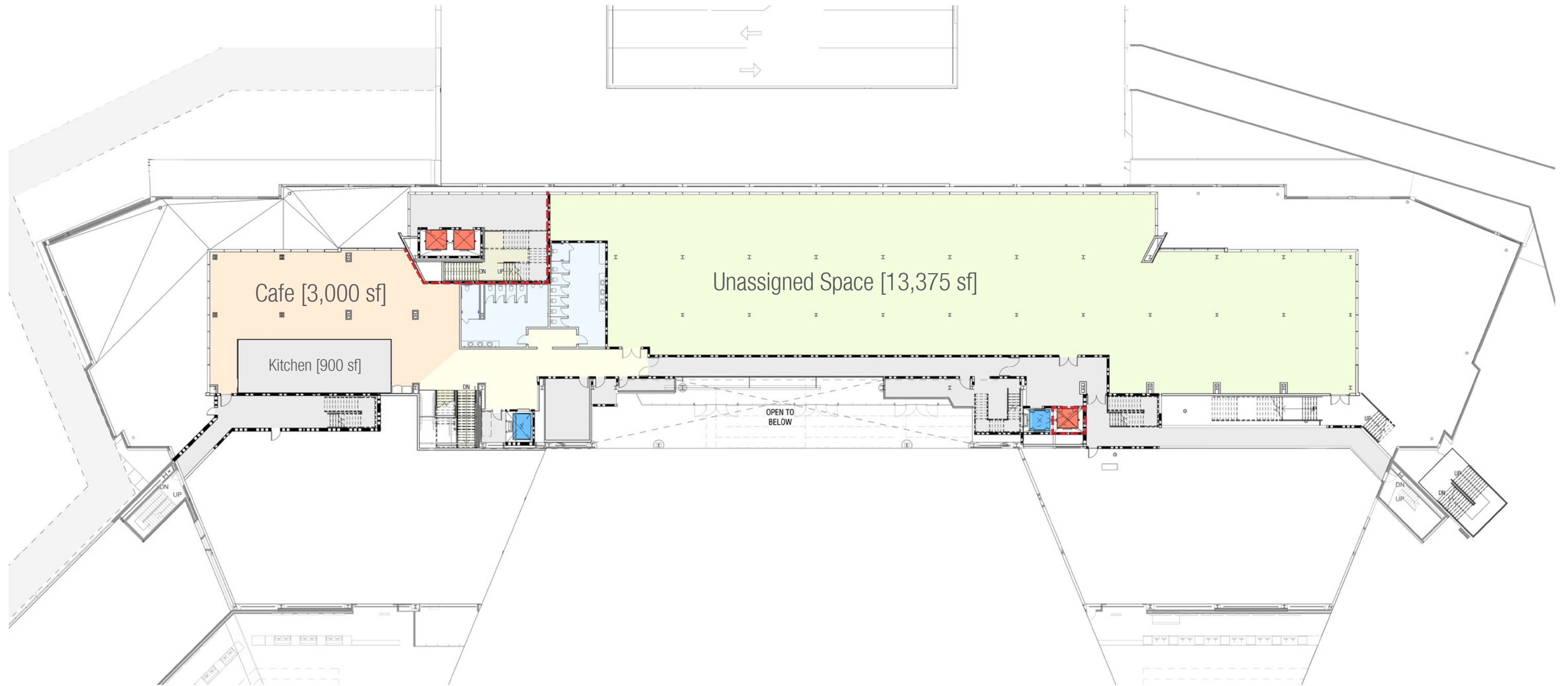


# Curbside

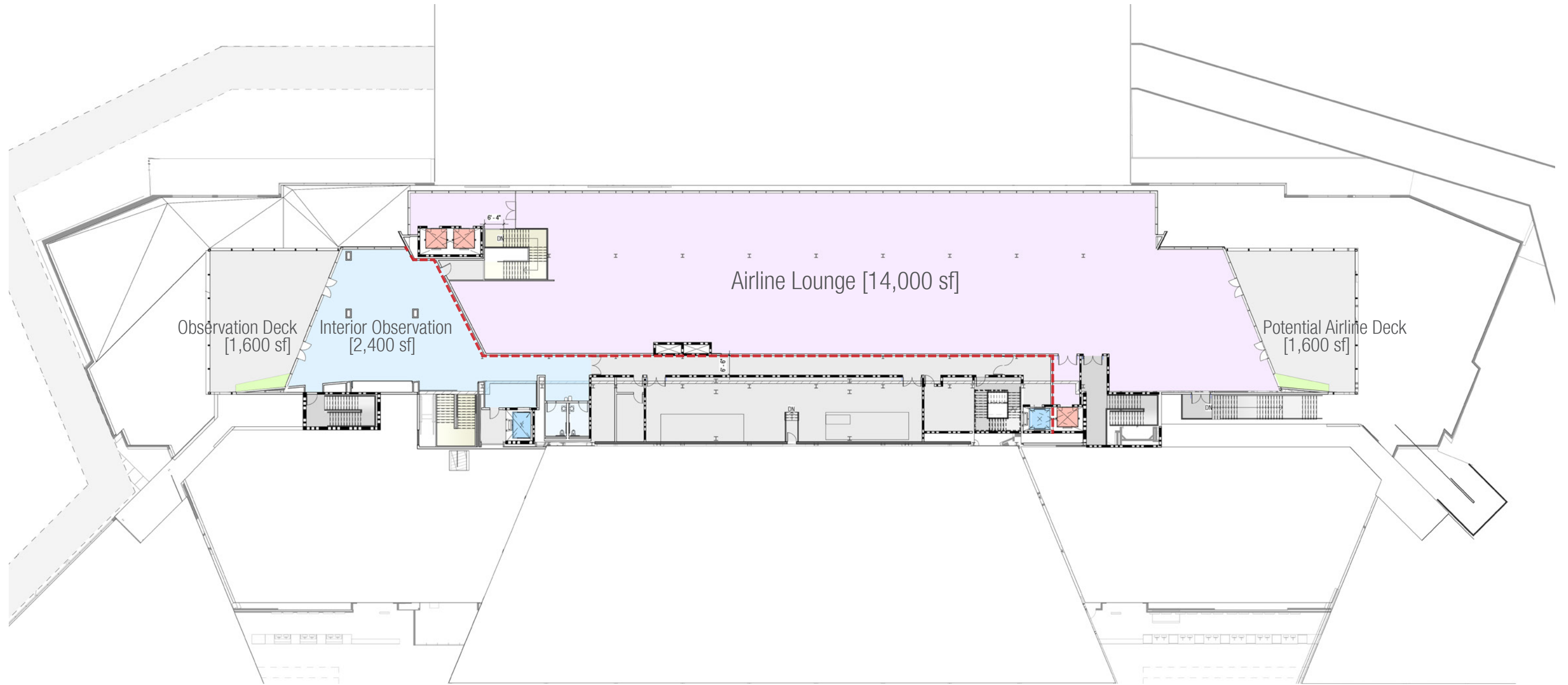
Secure Elevator  
Public Elevator





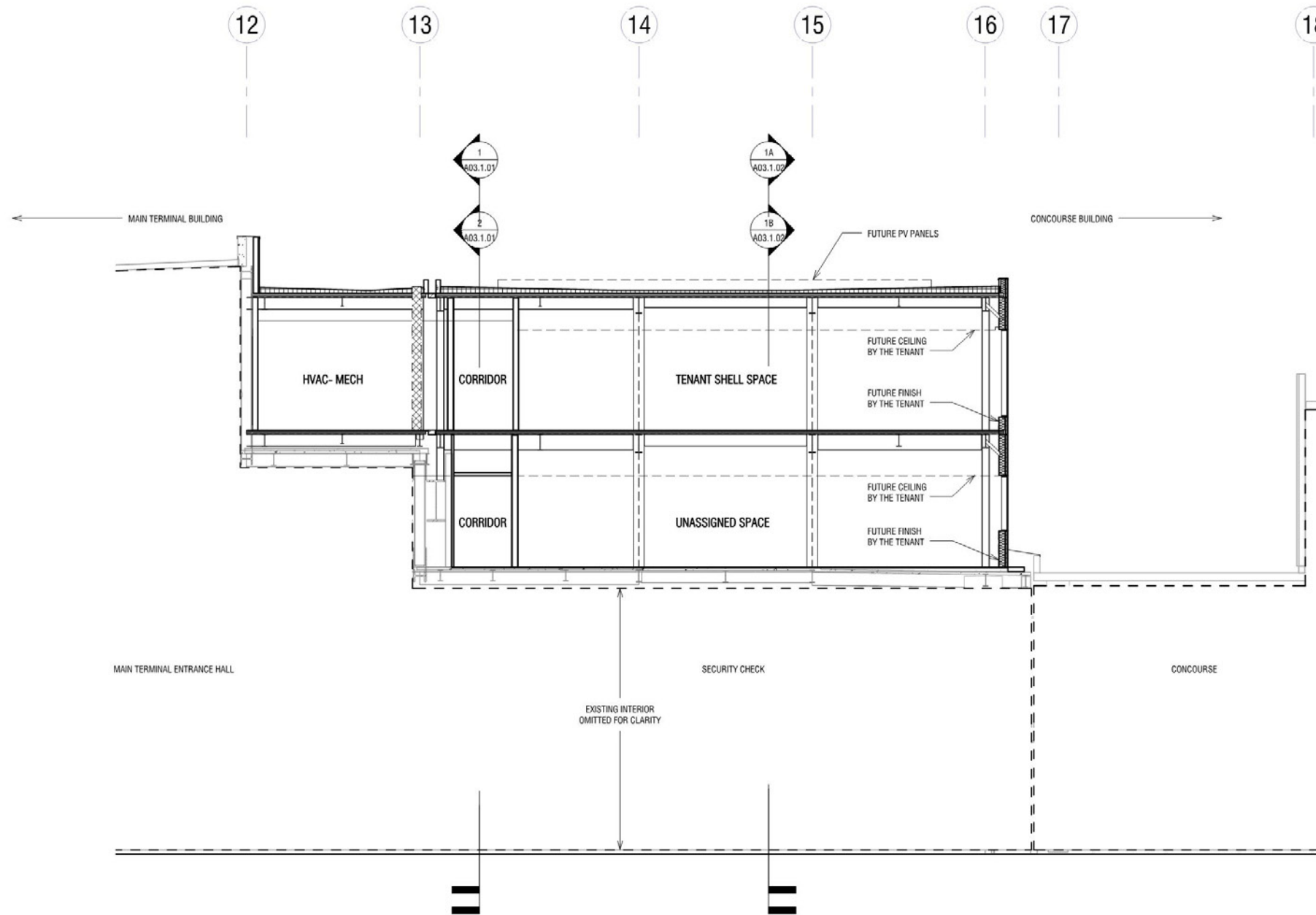


# Airside



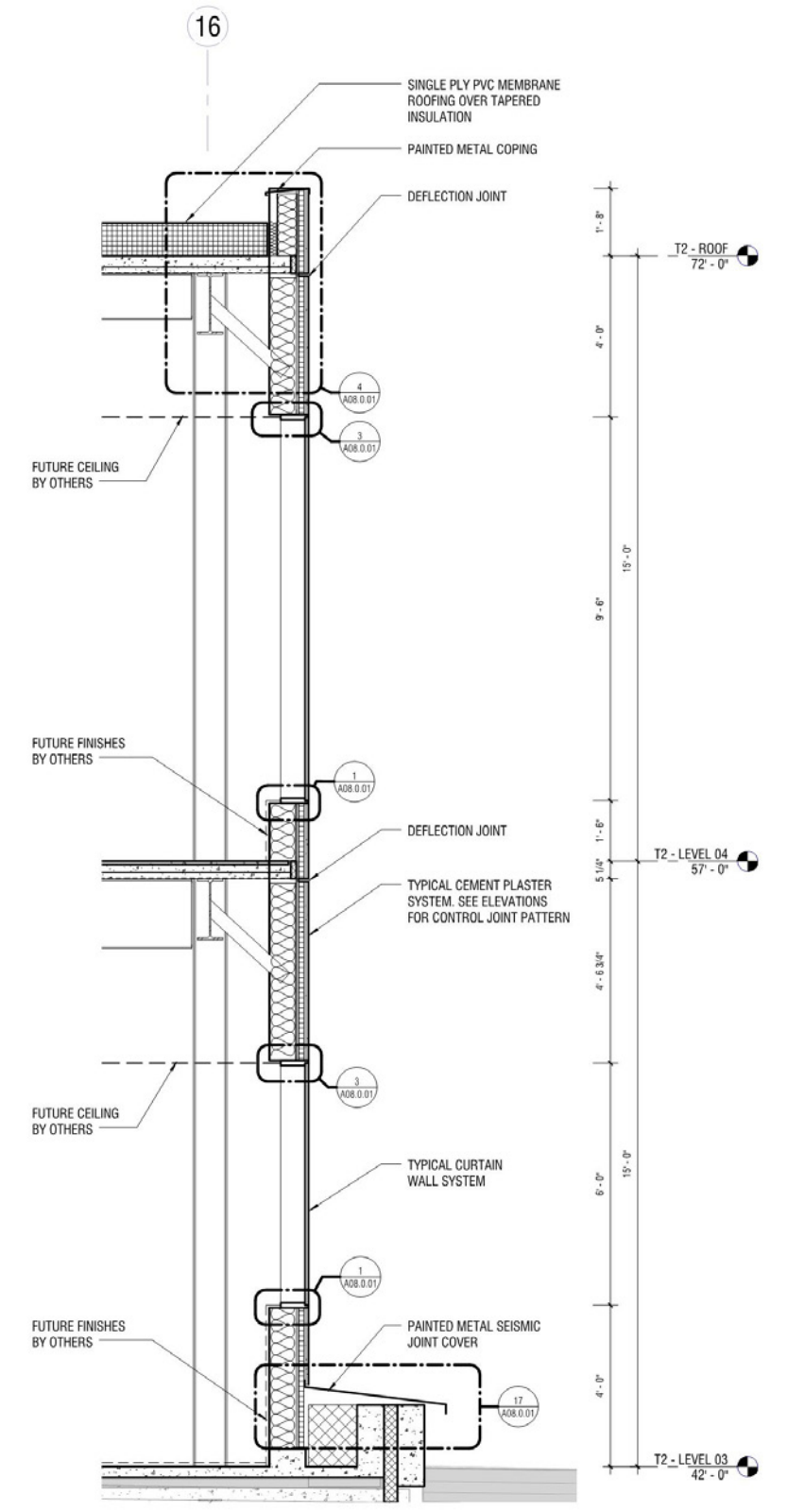
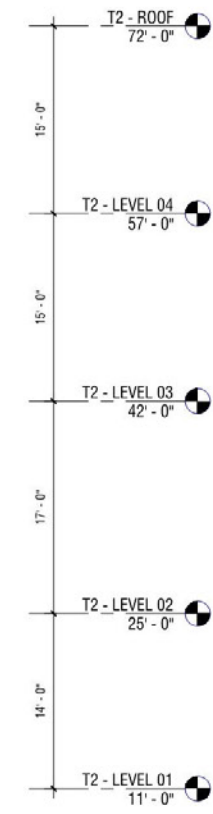
# Curbside

# Building Sections & Details



**2** TRANSVERSE BUILDING SECTION

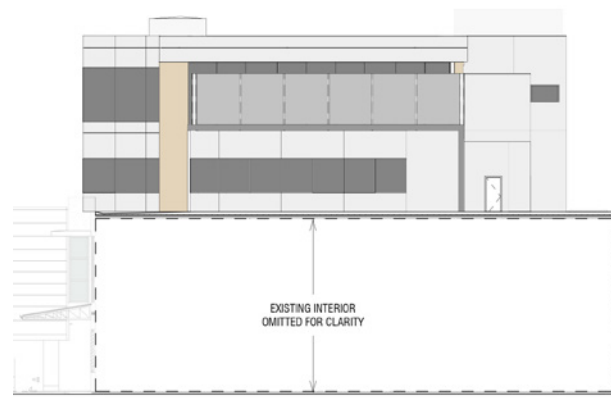
1/8" = 1'-0"



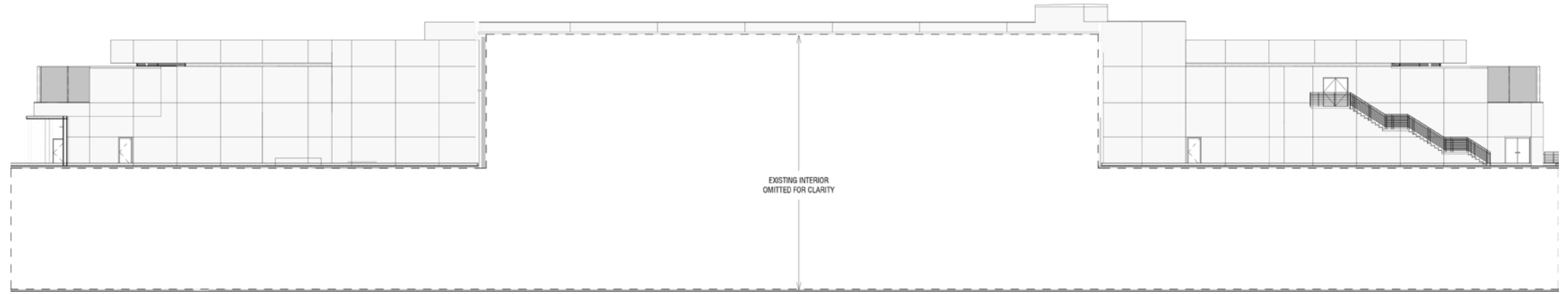
**1** EXTERIOR WALL SECTION - STOREFRONT

1/2" = 1'-0"

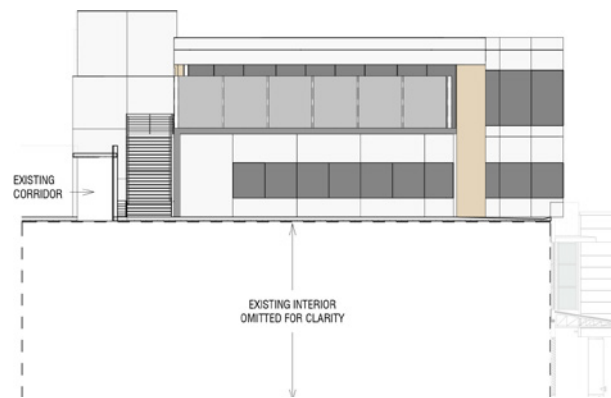
# Building Elevations



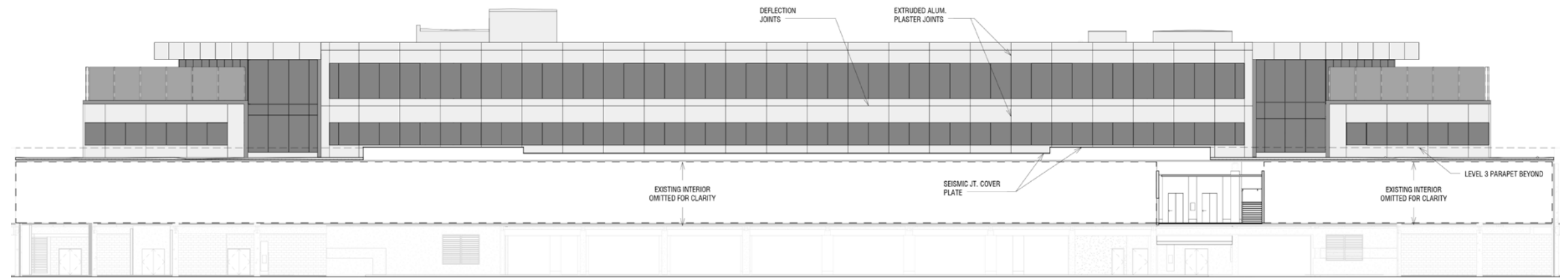
North Elevation



West Elevation



South Elevation



East Elevation

# Building Materials

1



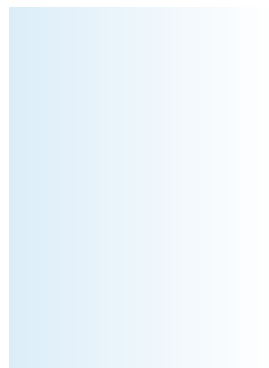
Stucco Wall, Matching Existing Color

2



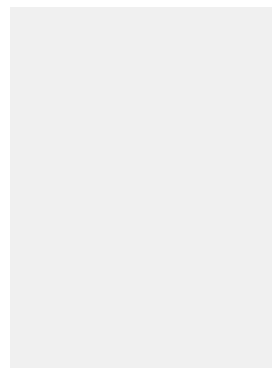
Wood Look Metal Panel

3



Vision Glass

4



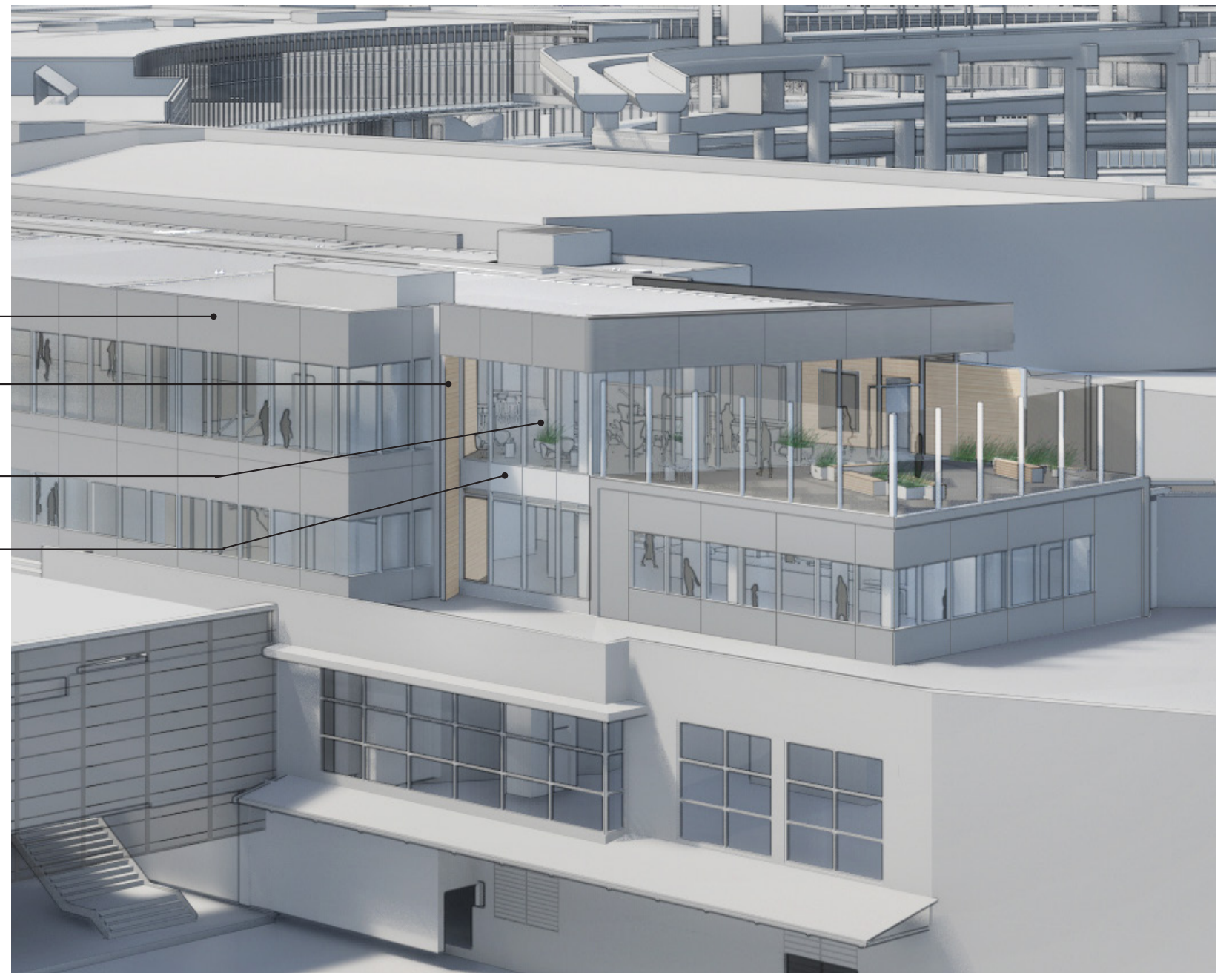
Spandrel, Back Painted Glass

1

2

3

4



# Building Materials

1



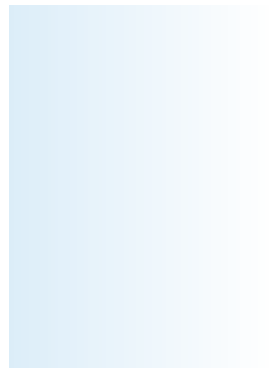
Stucco Wall, Matching Existing Color

2



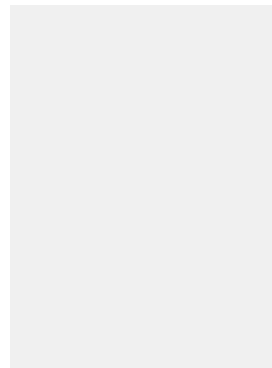
Wood Look Metal Panel

3



Vision Glass

4



Spandrel, Back Painted Glass

1

1

3



**Building Massing**  
**View from Air Train Blue Line**



**Building Massing**  
**View from Air Train Red Line**





**Building Massing**  
**South East Airfield View**



**Building Massing**  
**North East Aerial View**

