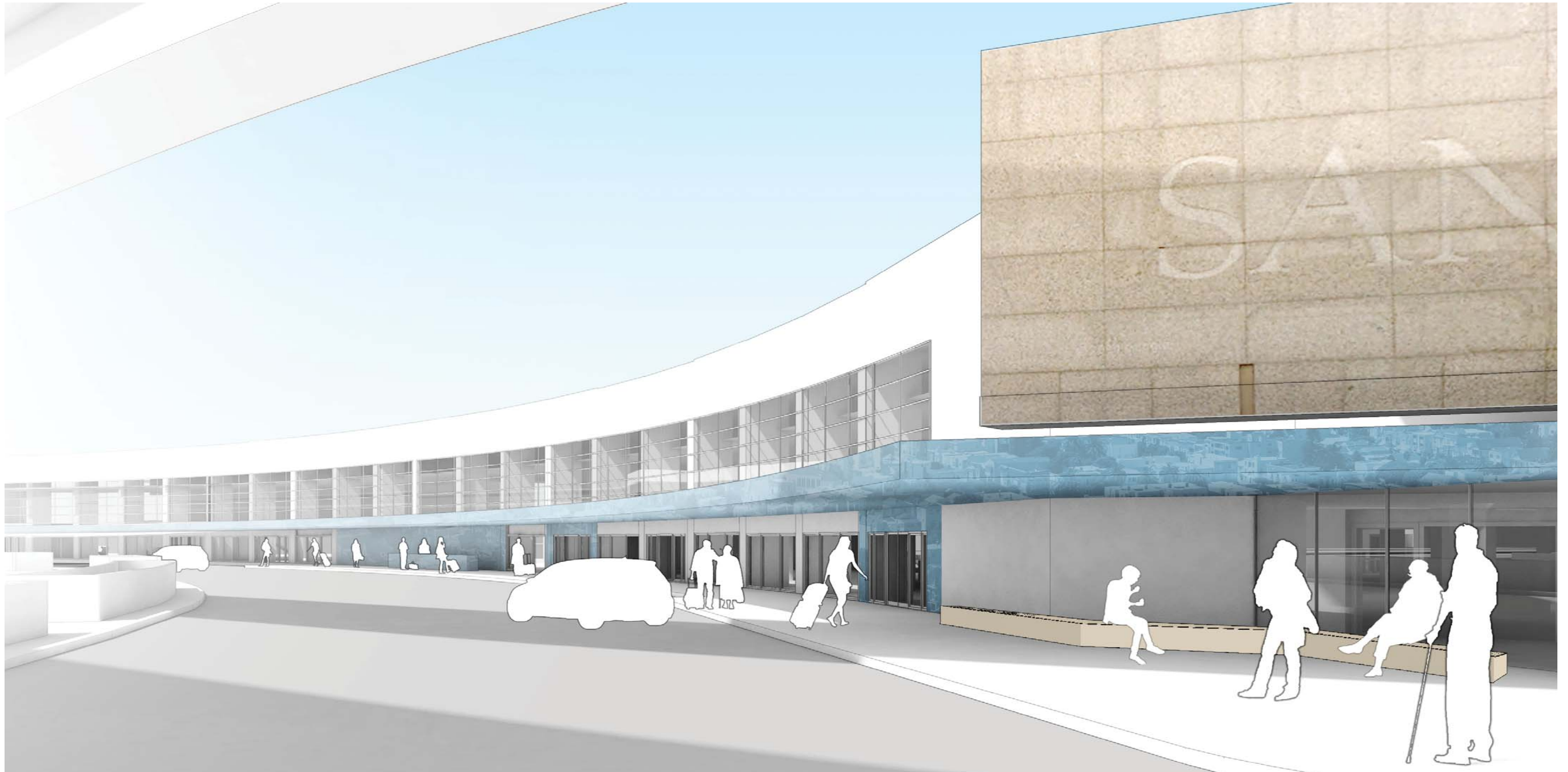


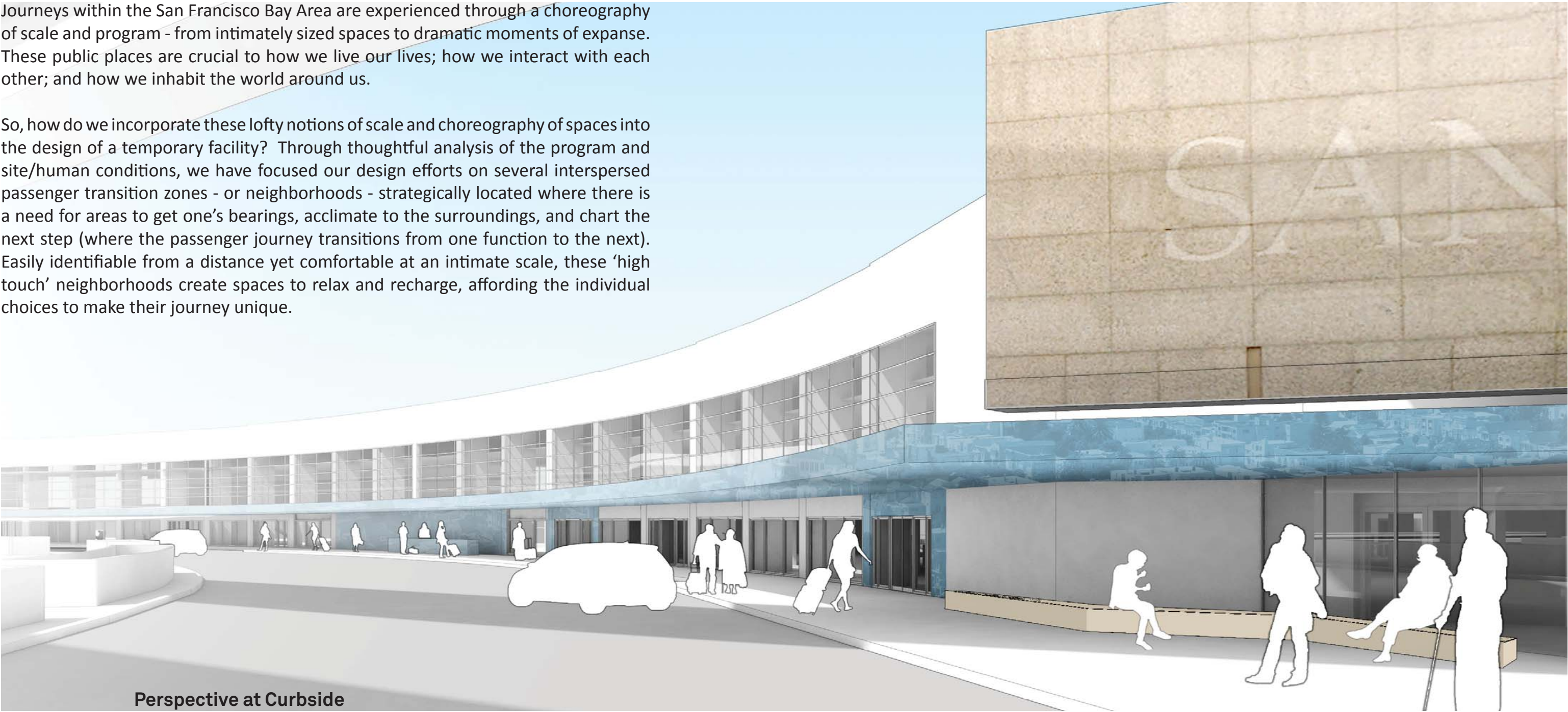
SFO Interim Boarding Area B

Civic Design Review



Journeys within the San Francisco Bay Area are experienced through a choreography of scale and program - from intimately sized spaces to dramatic moments of expanse. These public places are crucial to how we live our lives; how we interact with each other; and how we inhabit the world around us.

So, how do we incorporate these lofty notions of scale and choreography of spaces into the design of a temporary facility? Through thoughtful analysis of the program and site/human conditions, we have focused our design efforts on several interspersed passenger transition zones - or neighborhoods - strategically located where there is a need for areas to get one's bearings, acclimate to the surroundings, and chart the next step (where the passenger journey transitions from one function to the next). Easily identifiable from a distance yet comfortable at an intimate scale, these 'high touch' neighborhoods create spaces to relax and recharge, affording the individual choices to make their journey unique.

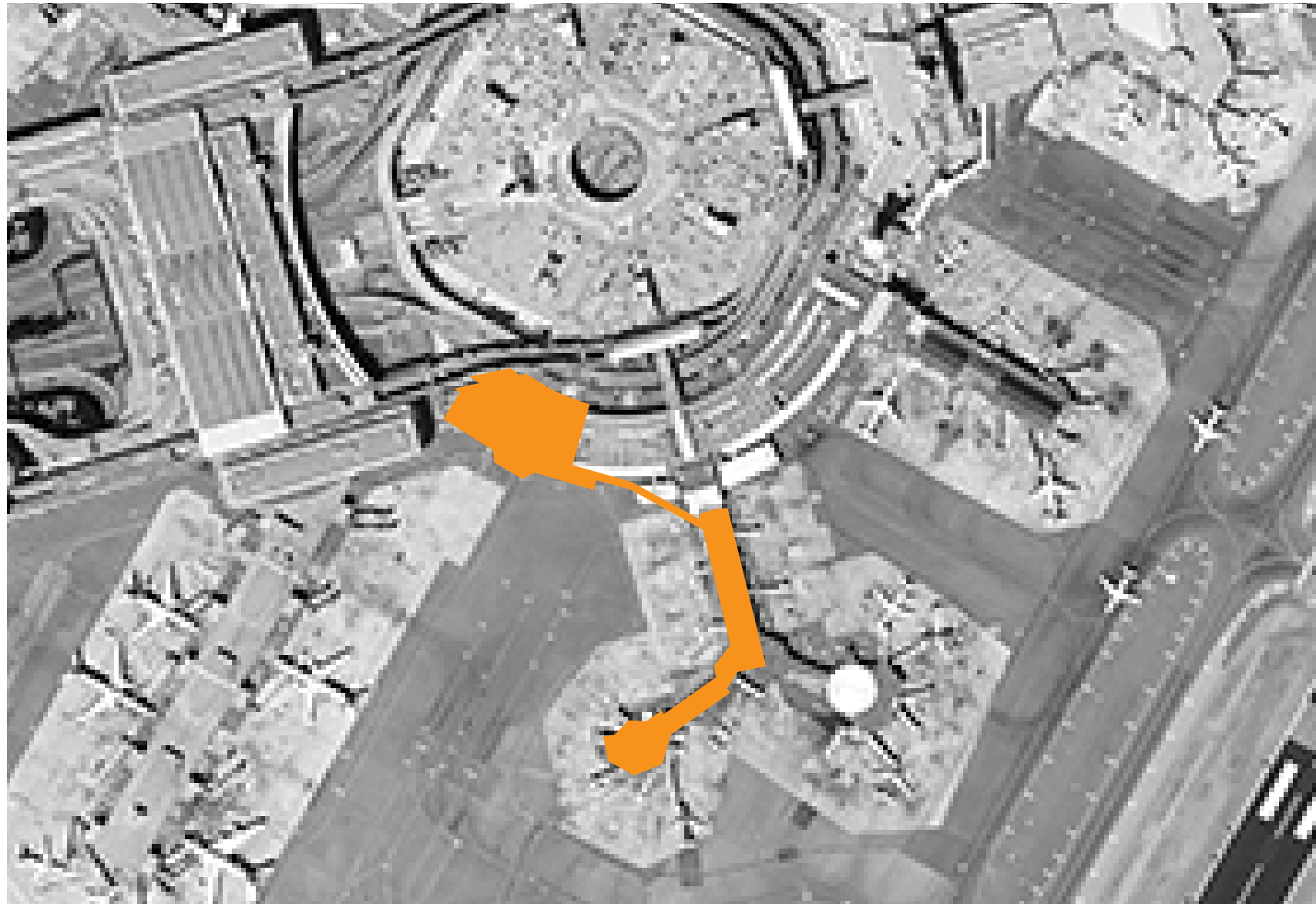


Perspective at Curbside



Bay Area Inspirations

DESIGN CONCEPT



Site Map

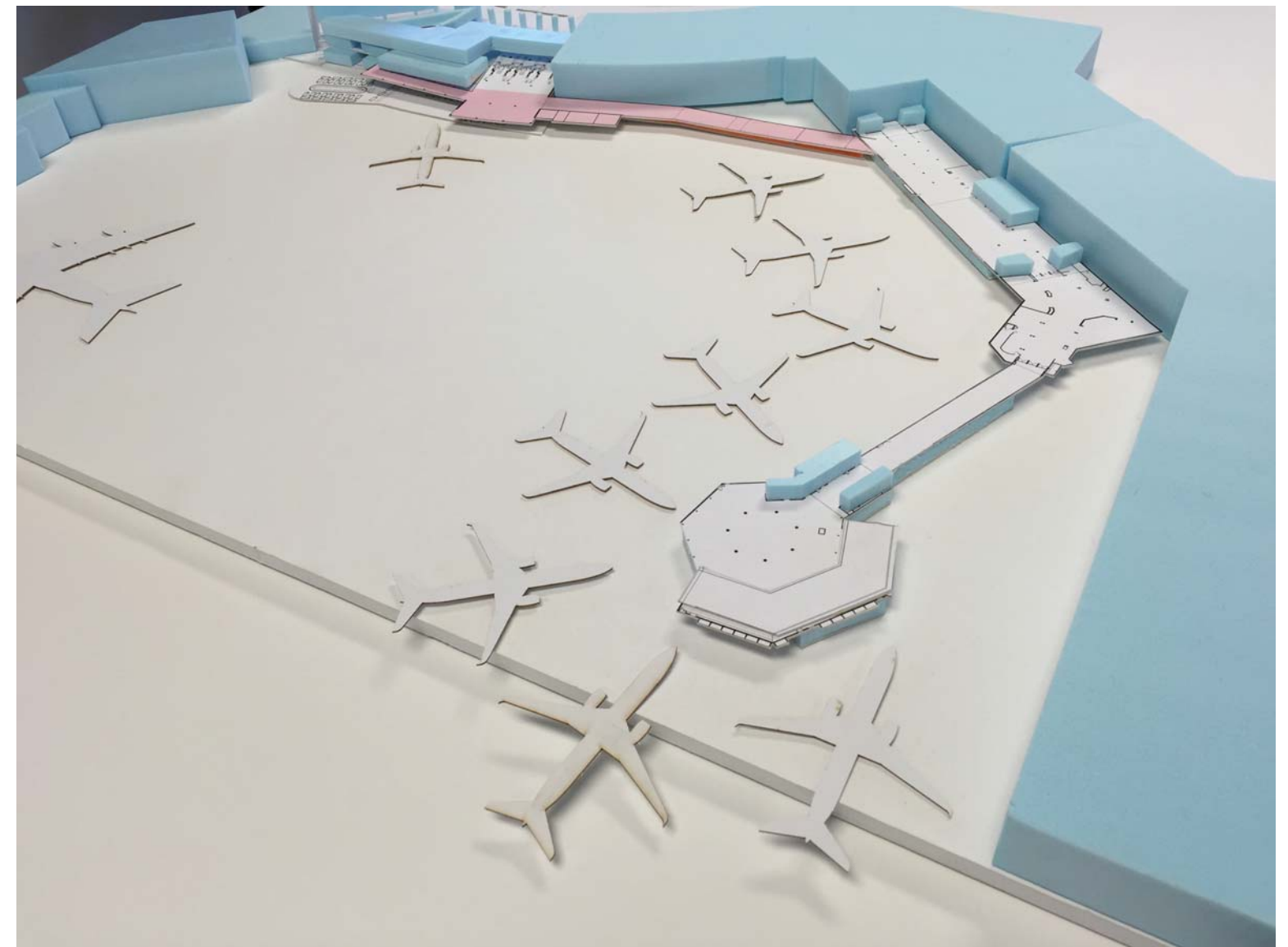
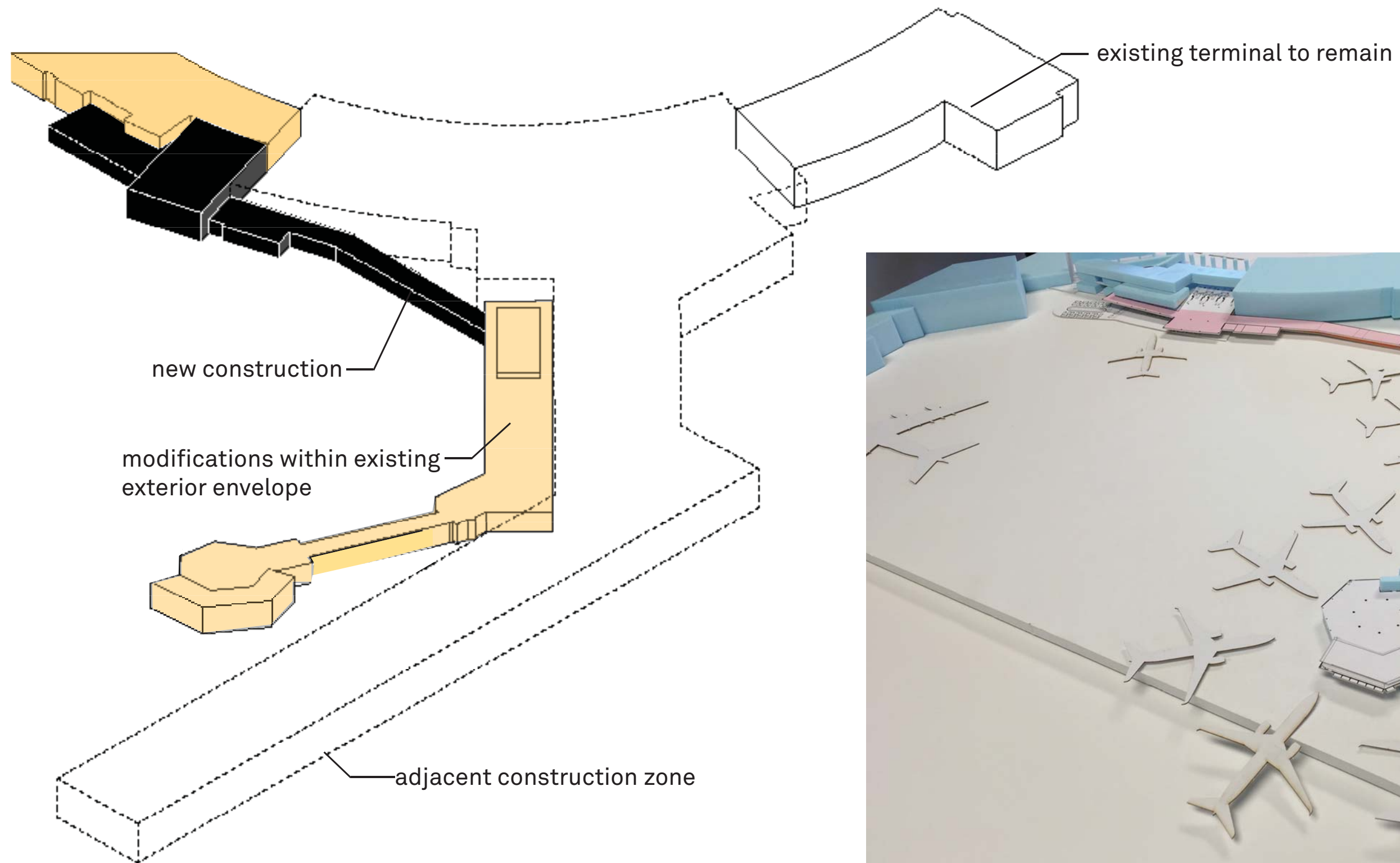


View to SFO from South



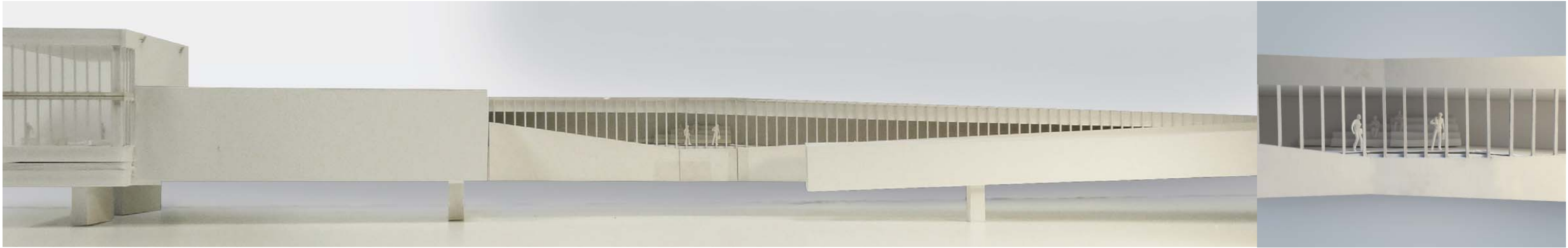
Photographs of Existing Conditions

CONTEXT AND SCALE



Design Site Model

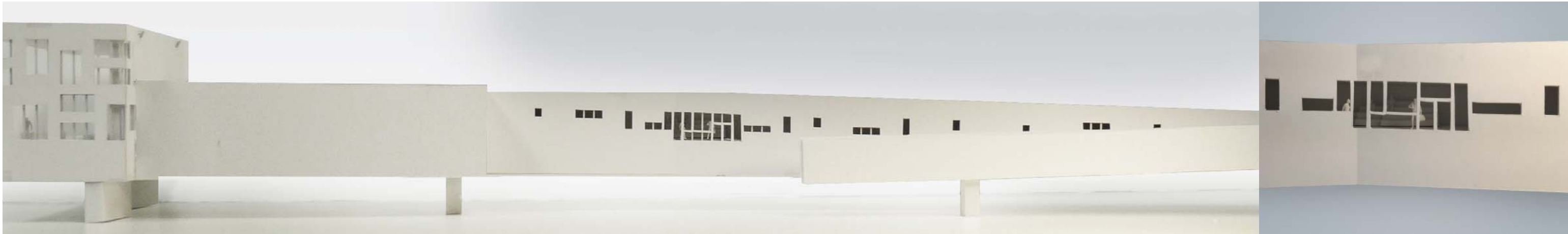
DESIGN ADJACENCIES



Maximum Area Glazing Study



Minimal Area Glazing Study



Punched Opening Glazing Study

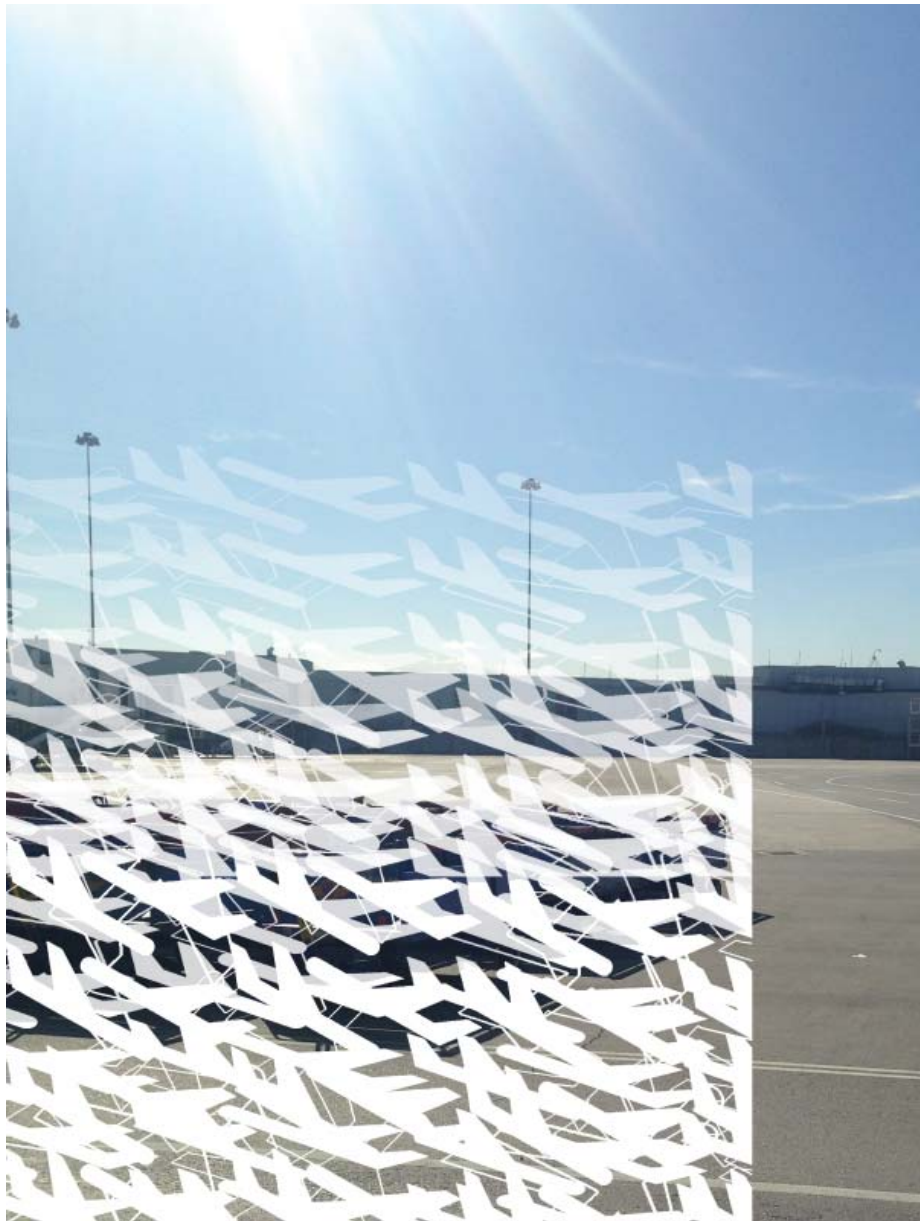
DESIGN STUDIES



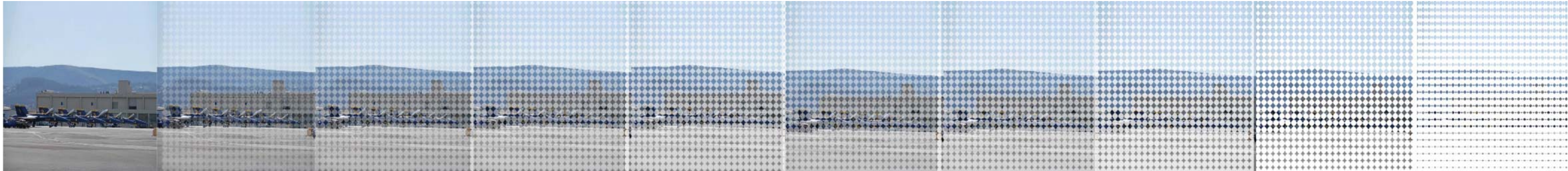
Mullion Pattern Exploration



Graphic Signage Band (Text on Decal Wrap)

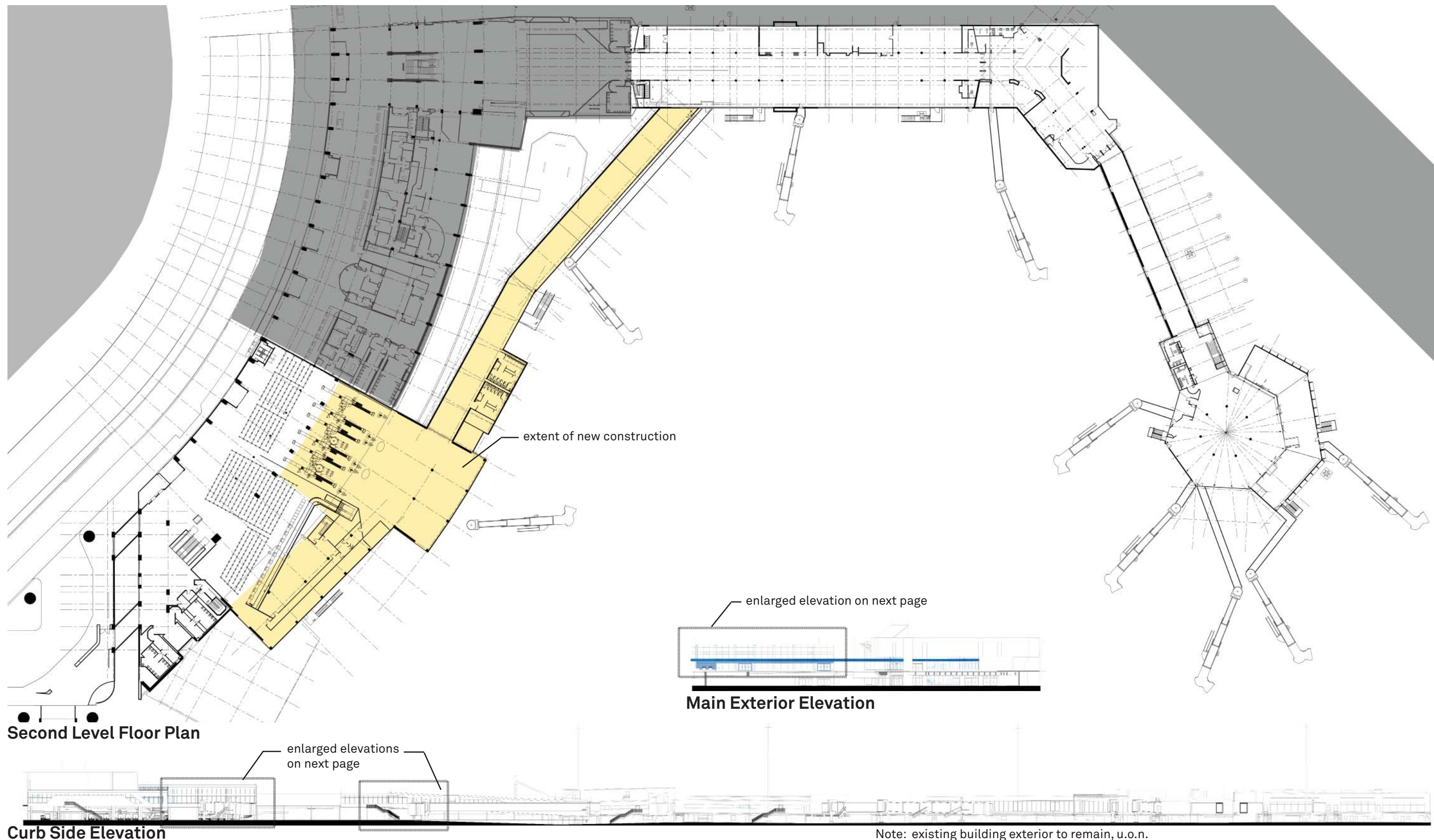


Glazing Pattern Study

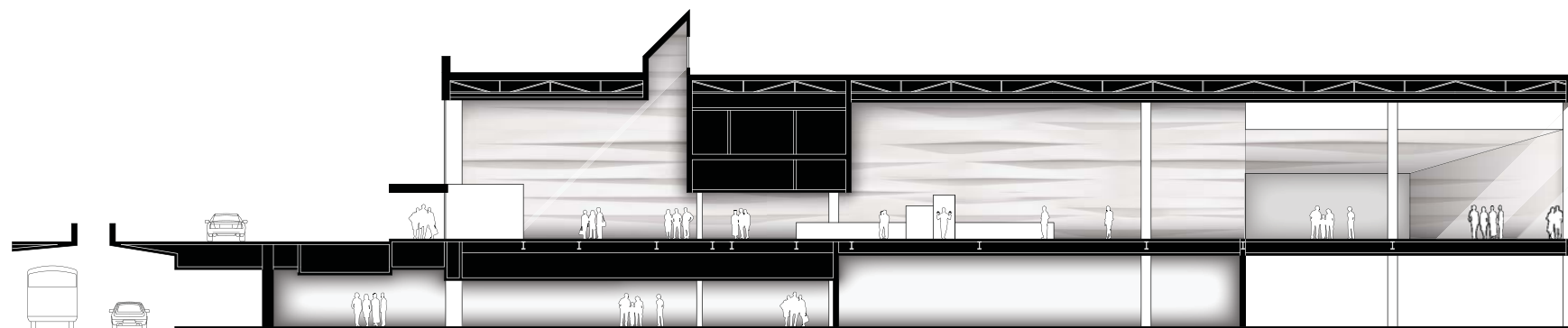


Glazing Opacity Study

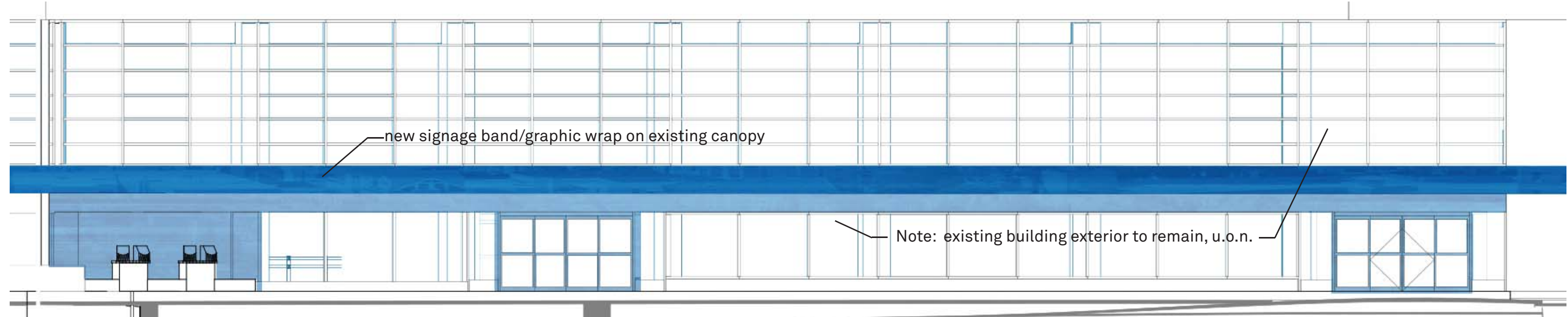
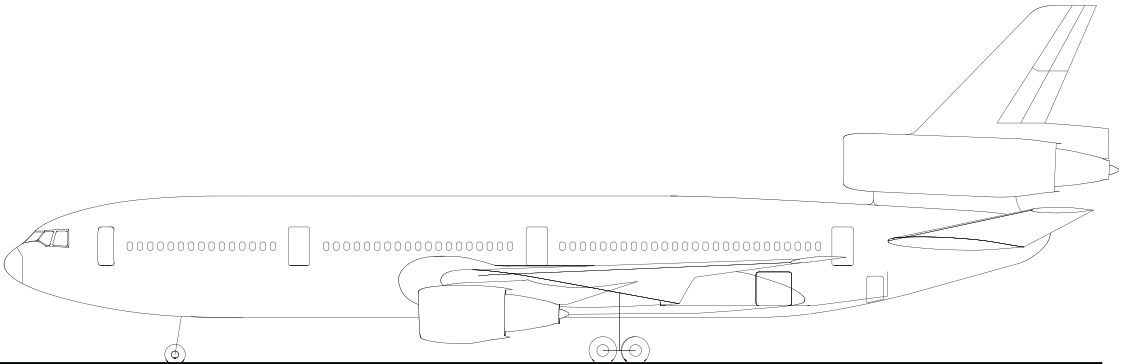
DESIGN STUDIES



FLOOR PLAN AND EXTERIOR ELEVATIONS



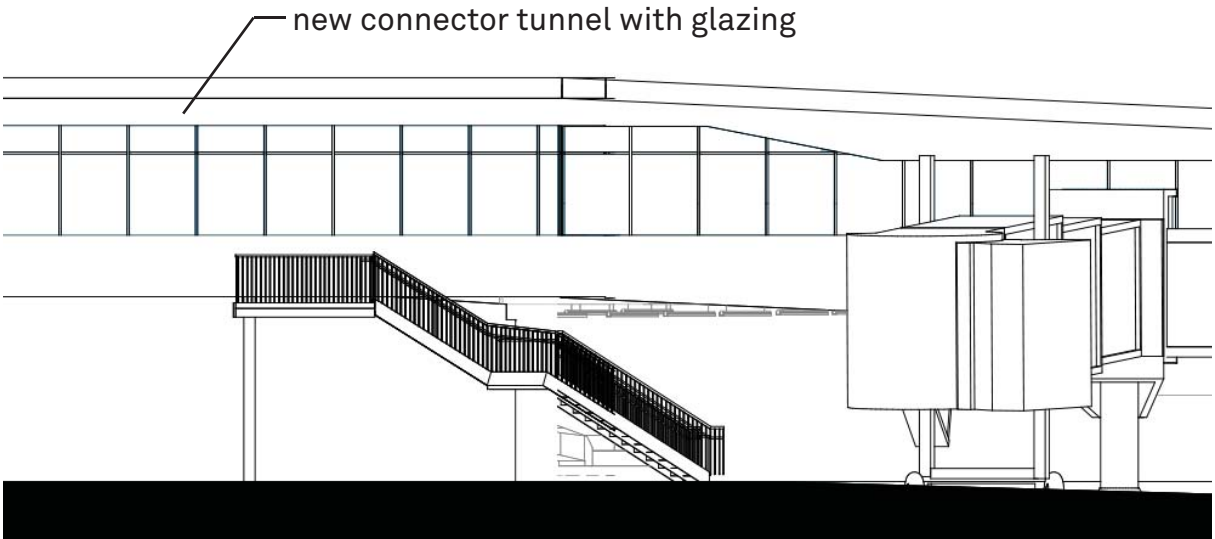
Section at Recompose and Boarding Area



Enlarged Curbside Elevation



Enlarged Elevation at New Holdroom



Enlarged Elevation at Connector

SECTION AND ENLARGED EXTERIOR ELEVATIONS

PROJECT DESIGN SCHEDULE

