



## CDR Phase 3

**SEP 020 Headworks Project**

**November 27, 2018**



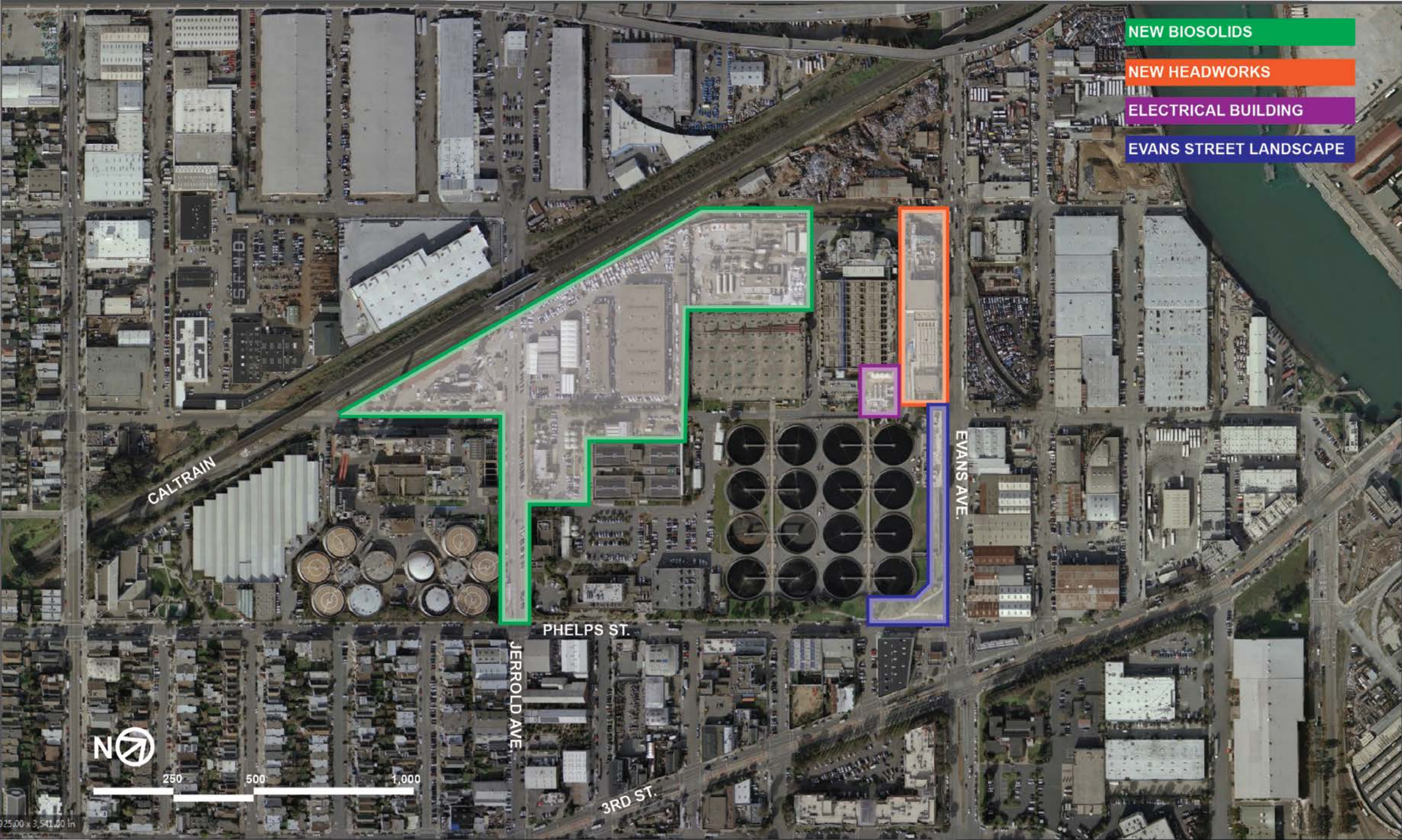
mwa architects





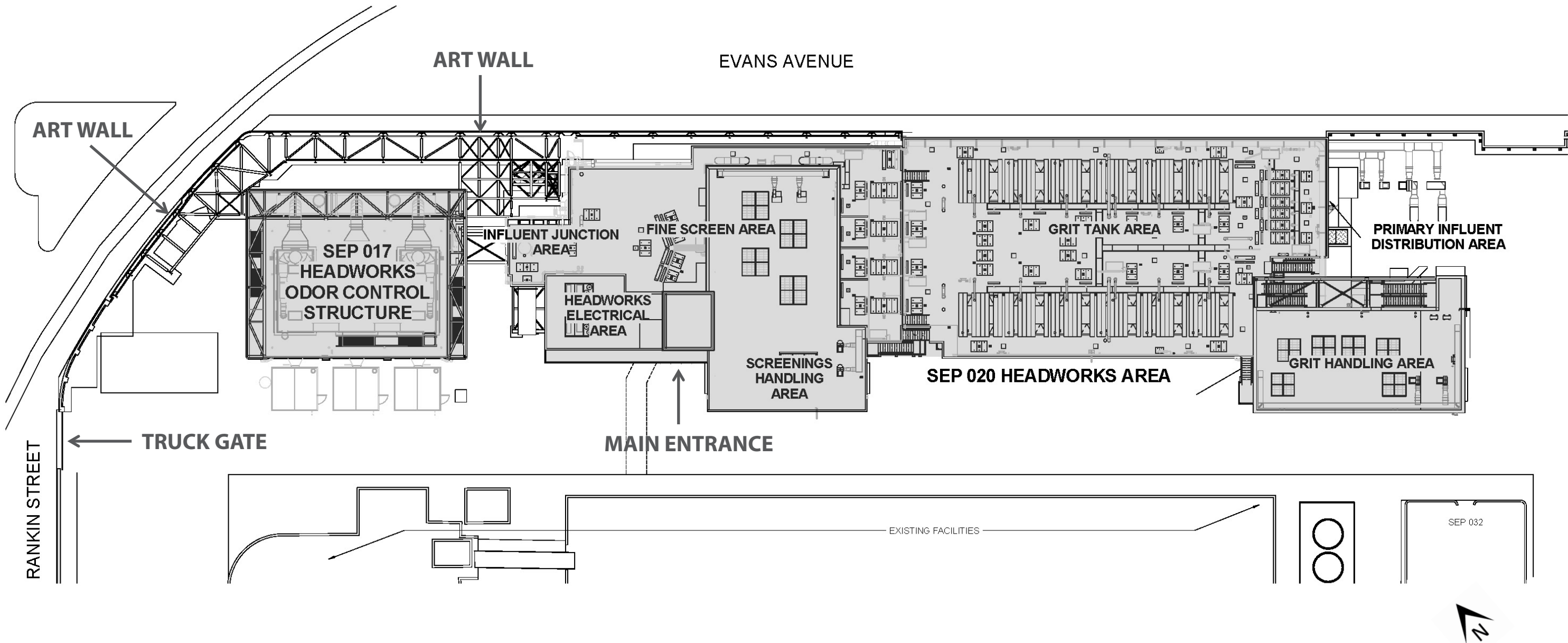
# SFPUC Southeast Campus Plan

## Phase 1 New Buildings





# Headworks Site Plan



# Design Revisions

Based on CDR Phase 2 Comments



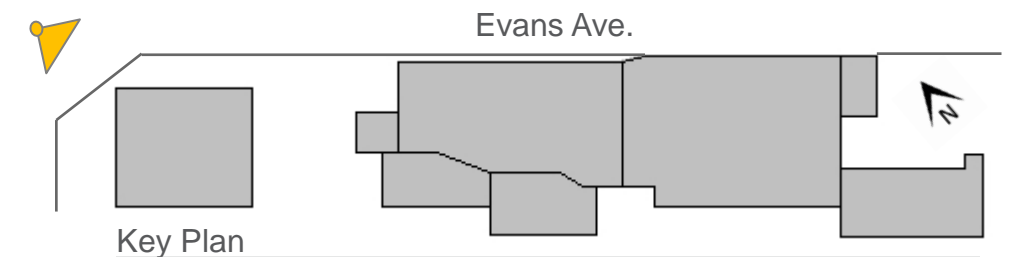
## Revised Design

### CDR Phase 2 comments

- Grit Handling zinc cladding
- Art Wall-to-Architecture transitions

## Phase 2 Design

**Note on Art Wall Images:**  
Images in this presentation do not represent the final art wall concept. The artist is responsible for final concept and images.





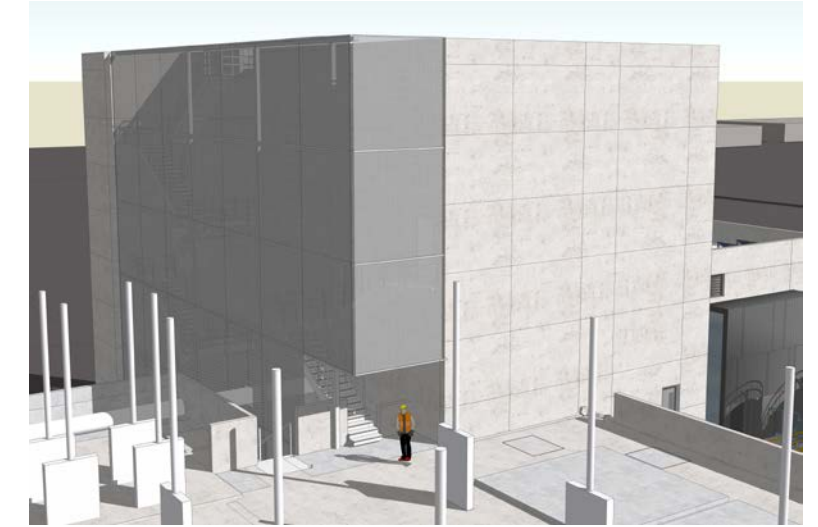
# Design Revisions

## Grit Handling Zinc & Stair Screening

Phase 2 Design



Final Design



### CDR Phase 2 comments

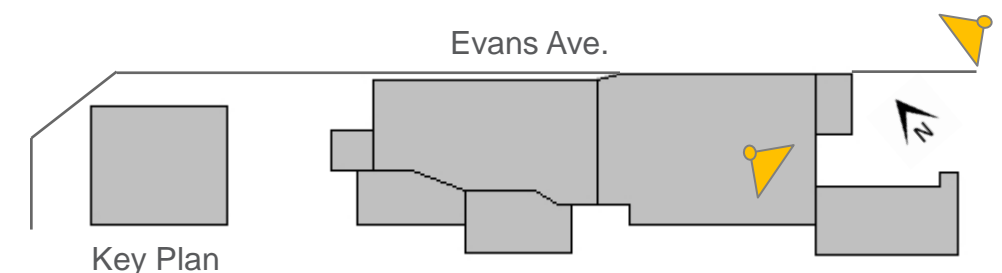
- Improve zinc expression
- Continue to simplify design
- Unified stair screening a good design move

### Revised Design Comments

- Zinc cladding developed as a SEP campus design element to emphasize and call out vertical circulation

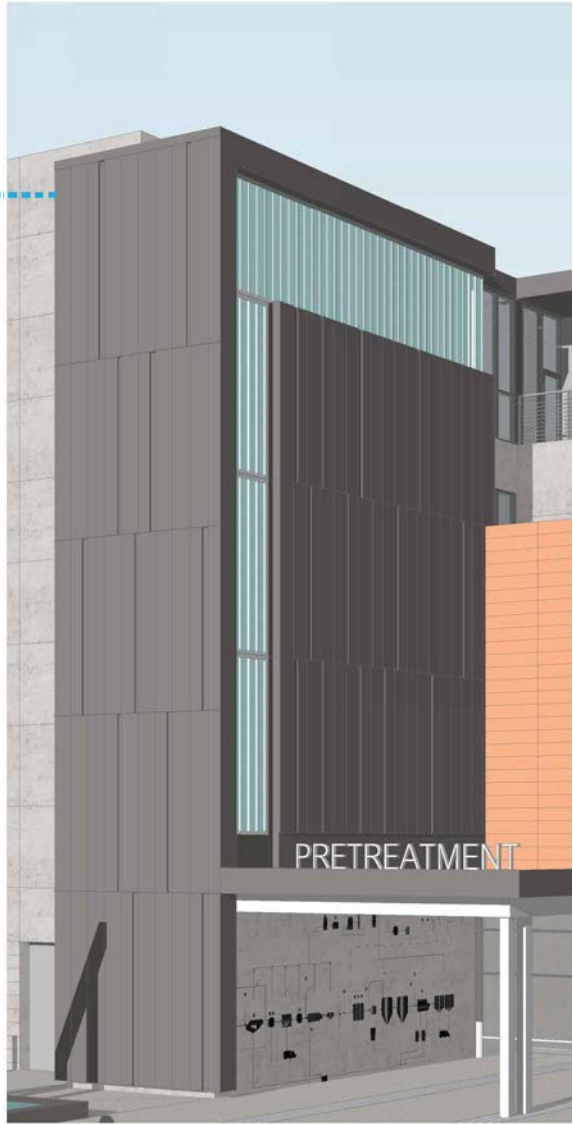
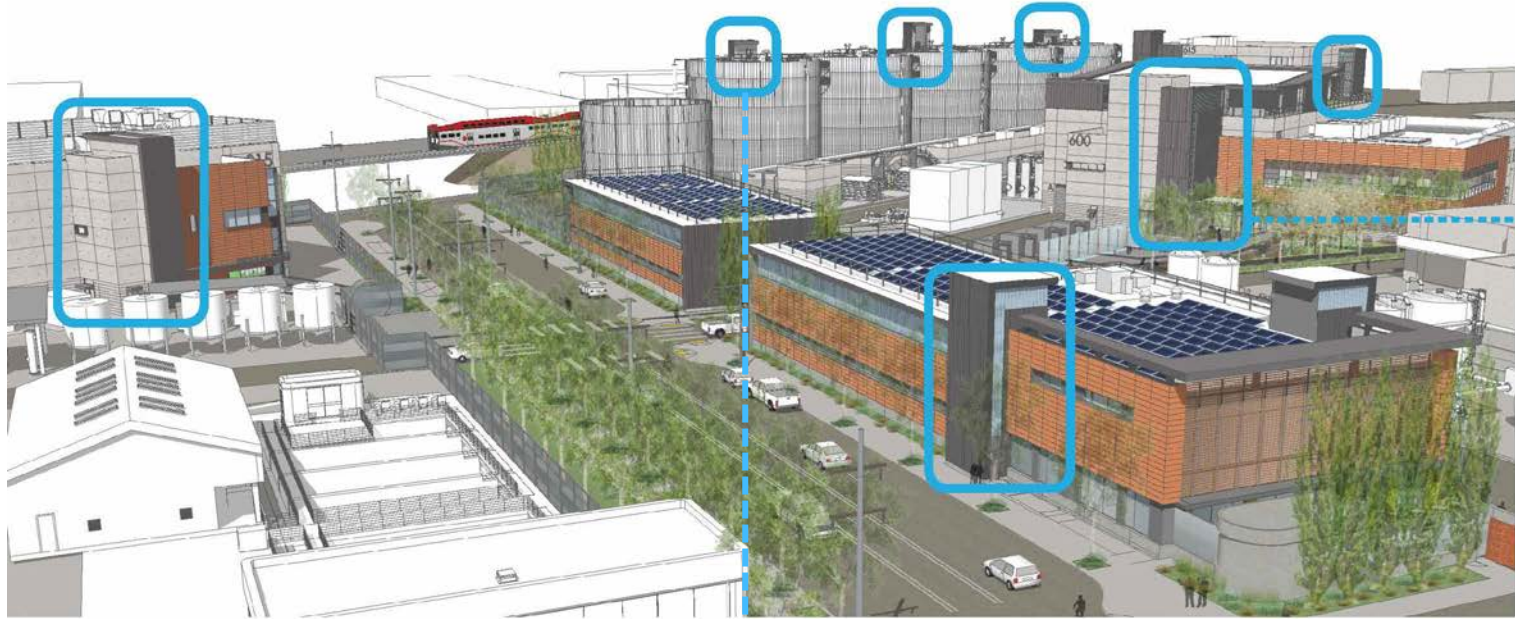
← SEP fence under future projects

→ Extent of Headworks fence installation





# Plantwide Vertical Elements





# Final Design

## Plantside Perspectives



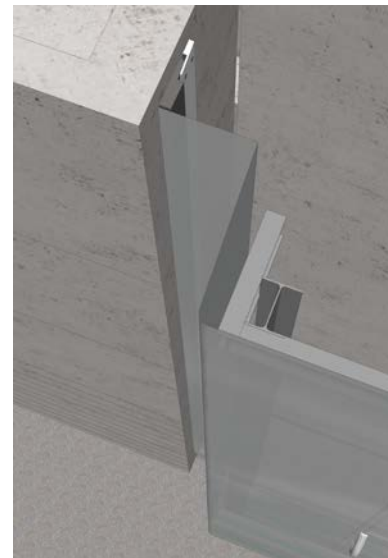
**ELECTRICAL/SCREENINGS LOOKING NORTH**

**GRIT HANDLING LOOKING WEST**



# Design Revisions

## Art Wall Transition to Grit Tank

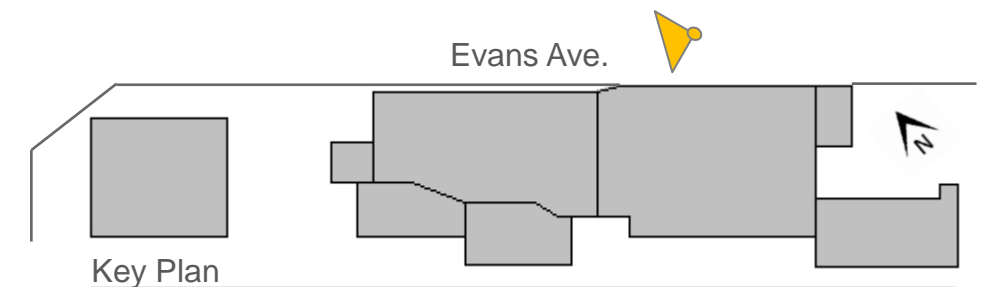


### CDR Phase 2 comments

- Resolve transition between art wall and architecture
- Express the connection between art and concrete

### Revised Design Comments

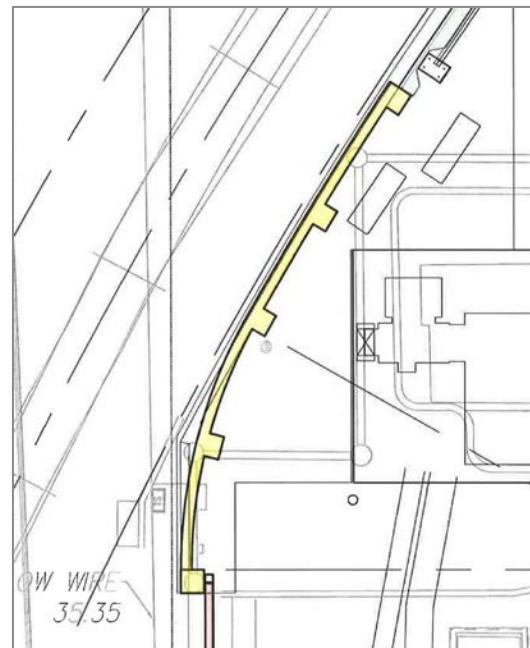
- Art wall required to be on property line due to new pipes and equipment in space behind
- Art wall reads as a separate volume
- 18" wide reveal between art wall and grit tank concrete
- ~24" deep return to Grit Tank with metal panel by artist





# Design Revisions

## Art Wall Transition to Truck Gate

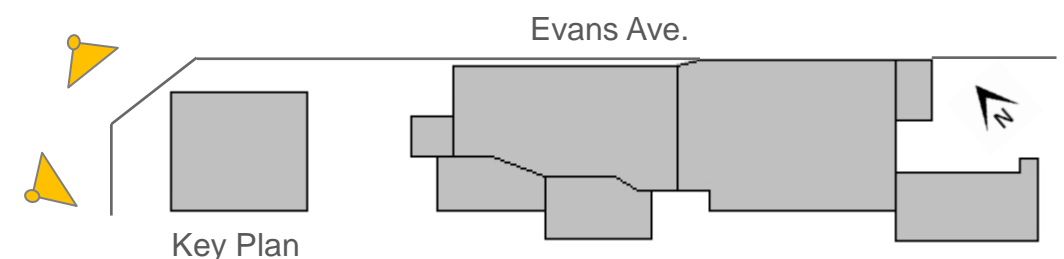


### CDR Phase 2 comments

- Resolve transition between art wall and architecture
- Express the connection between art and concrete
- Curve the wall at truck gate

### Revised Design Comments

- Art wall reads as a separate volume
- 18" wide reveal between art wall and concrete wall
- Art wall set in ~10" to make room for fins along train line
- 30' H curved concrete wall creates 'frame' similar to Grit Tank





# Final Design

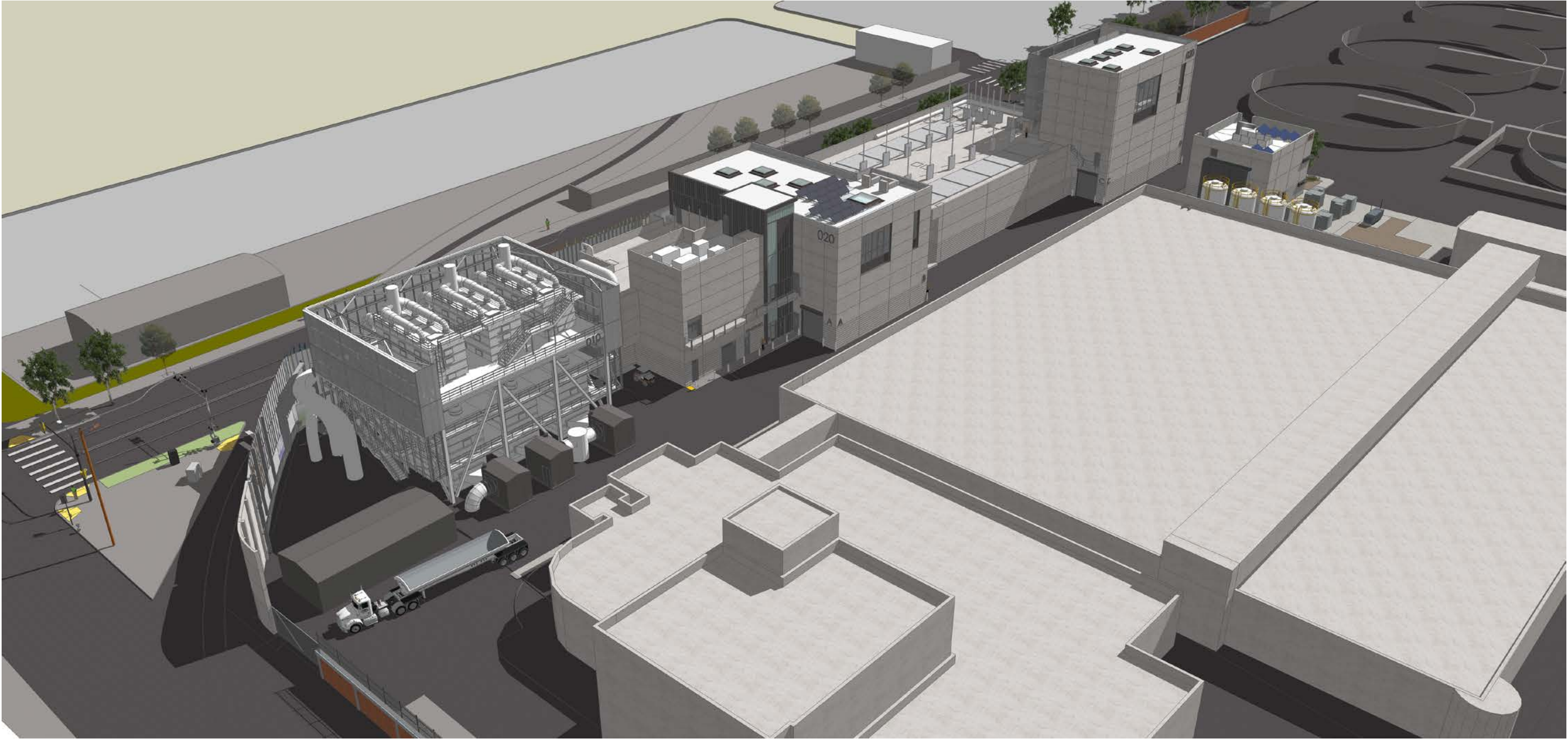
Birdseye from Southeast





# Final Design

Birdseye from Southwest





# Final Design

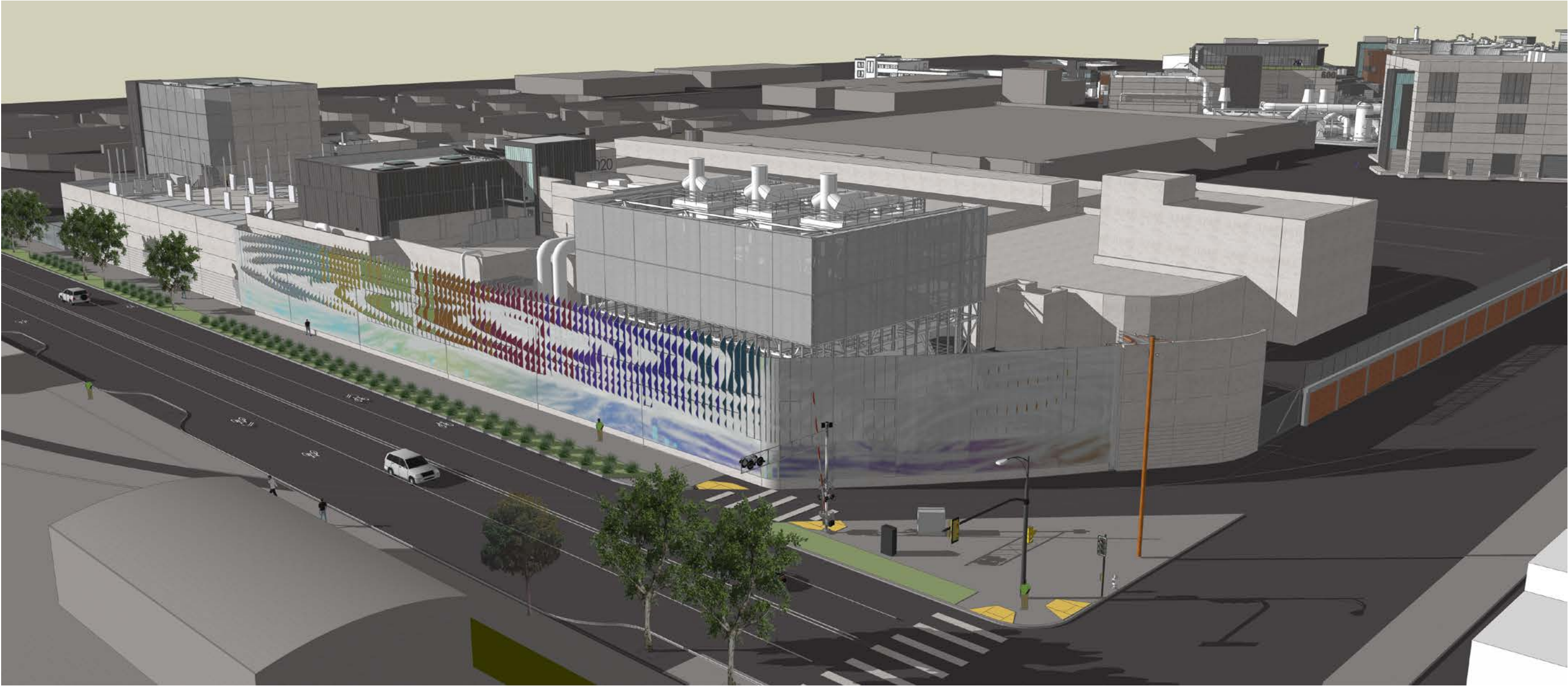
Birdseye from Northeast





# Final Design

Birdseye from Northwest





# Architectural Materials



Zinc Panels



Zinc Composite Panels



Stainless Steel Mesh Fabric



Channel Glass



SS Cable Rail

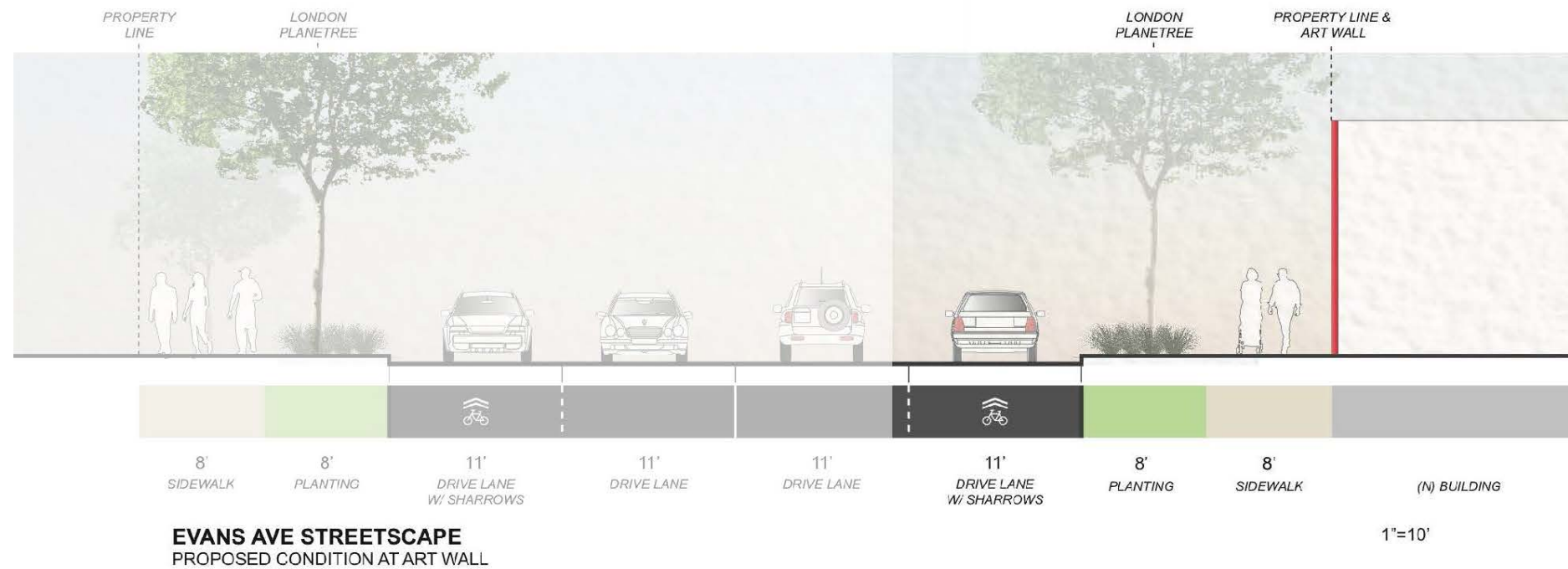
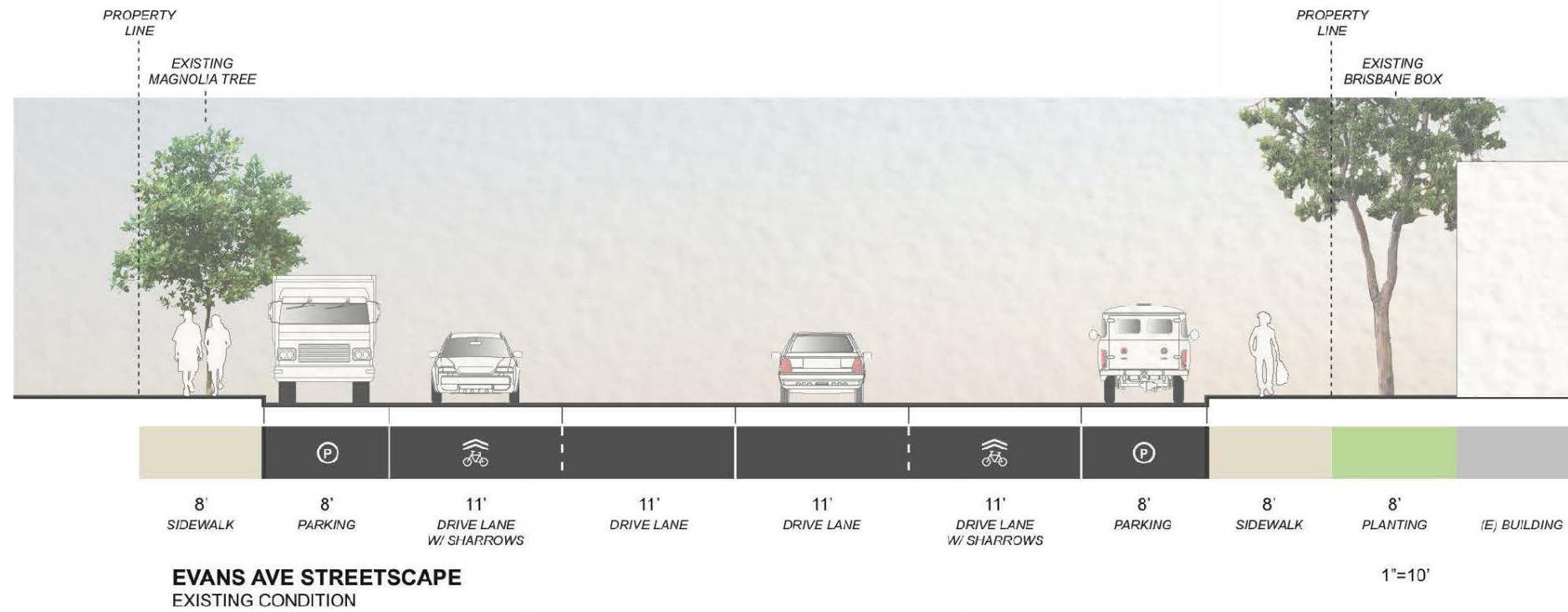


Concrete Reveals



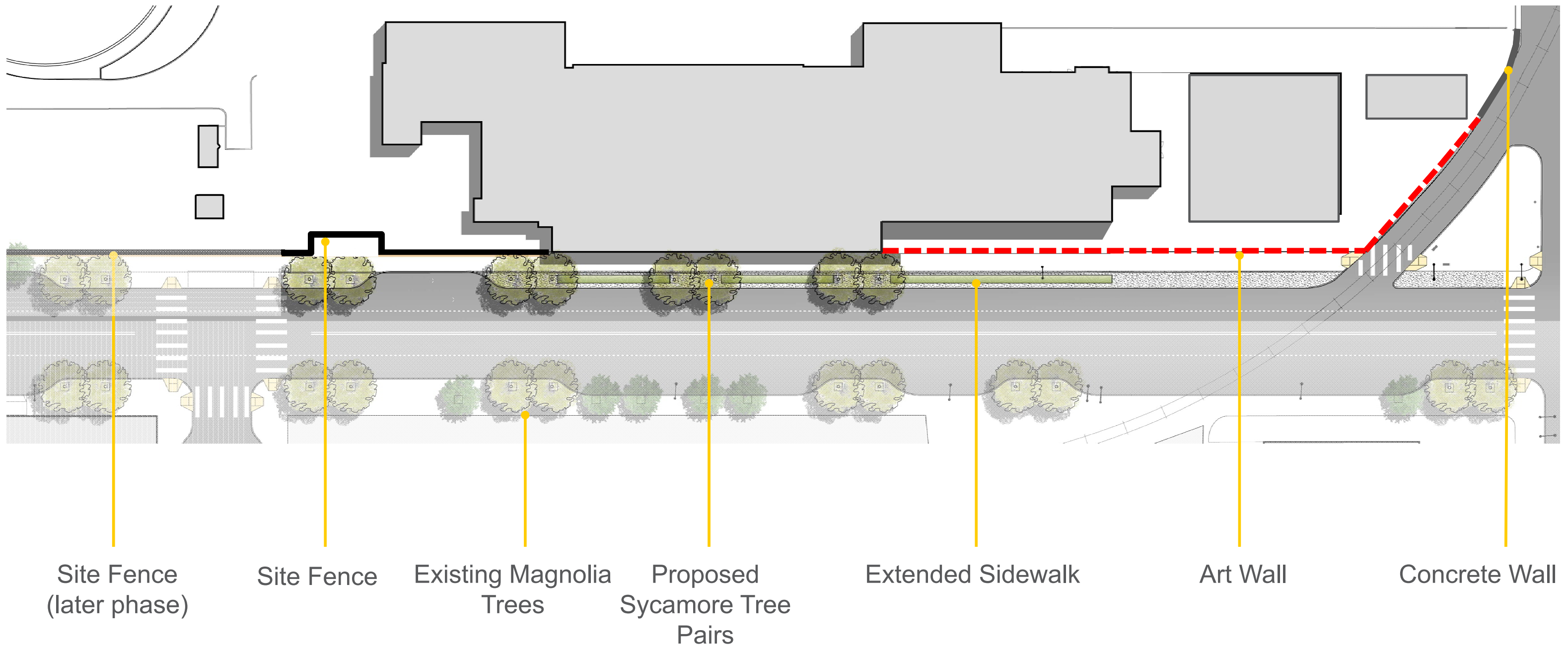
# Evans Ave. Landscape

## Streetscape Section



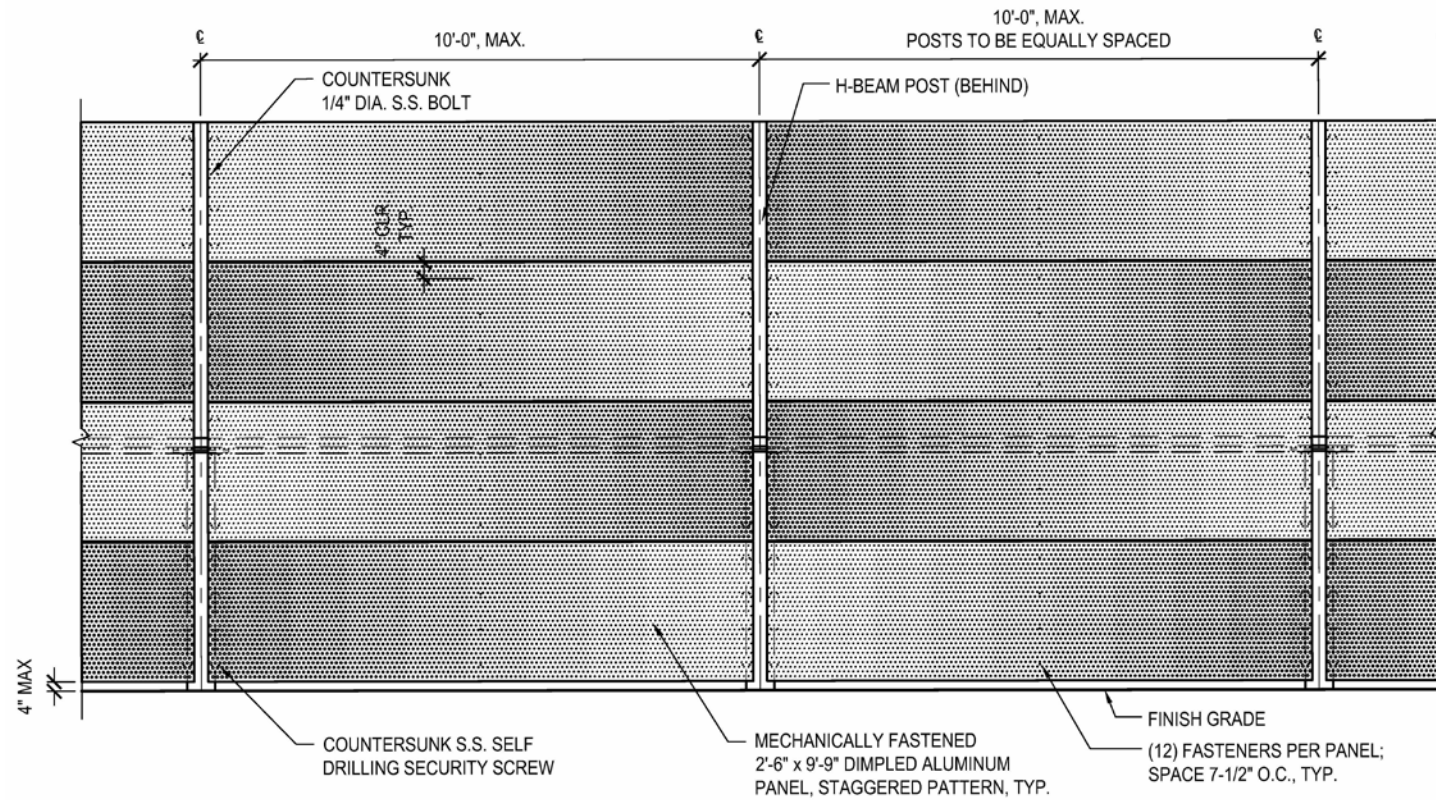


# Evans Ave. Landscape Streetscape Plan



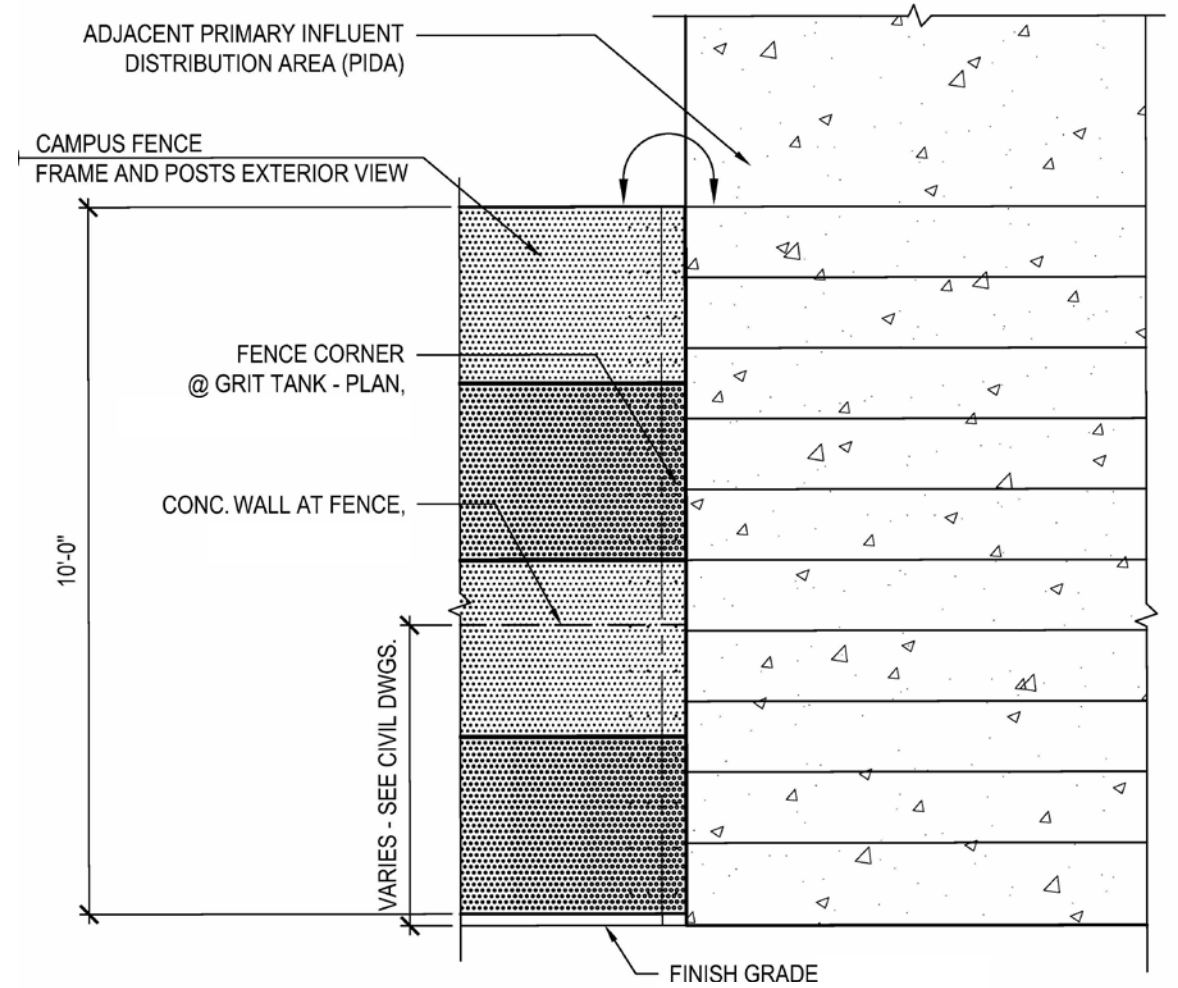
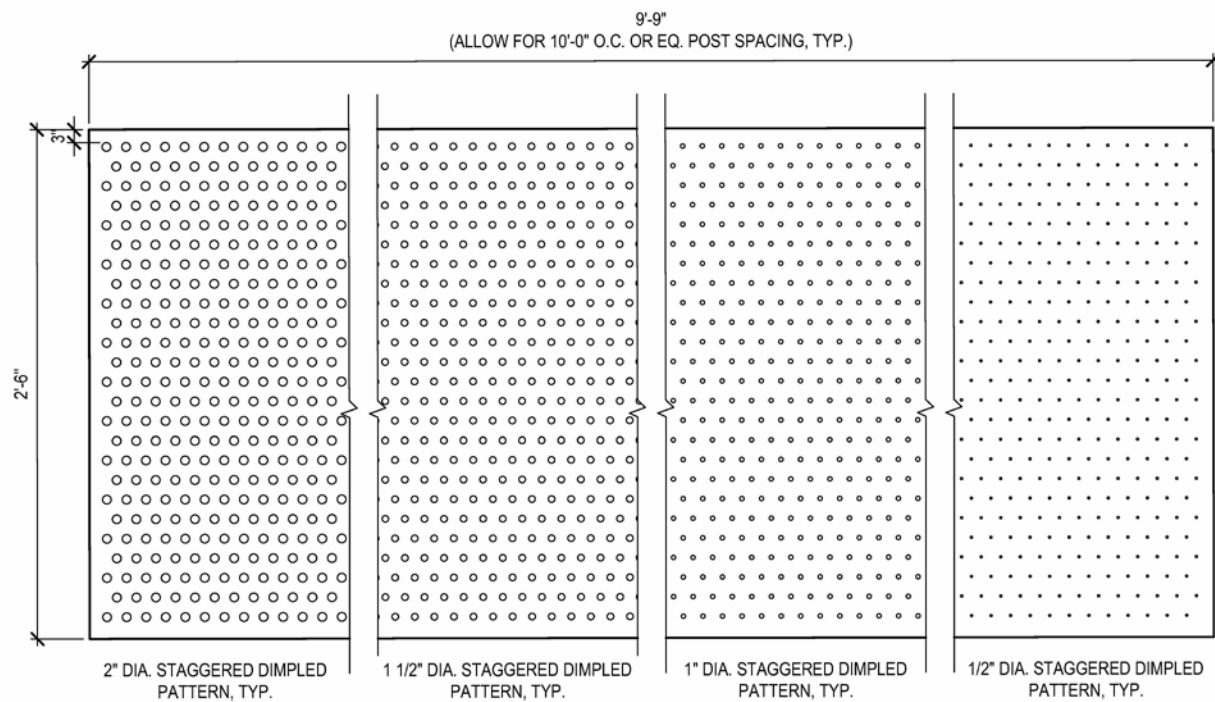


# Site Fence Details



TYPICAL NORTH ELEVATION

## METAL PANEL DIMPLE PATTERN



FENCE TO ARCHITECTURE DETAIL



# Landscape Material Palette

TREES



**London Planetree** *Platanus x acerfolia*  
(Proposed)



**Star Magnolia** *Magnolia stellata*  
(Existing + Proposed)

GROUND PLANE



**Cobblestone**



**Decomposed Granite**



**Atlas Fescue** *Festuca mairei*



Thank You

