



hólos
N A R D U L I S T U D I O

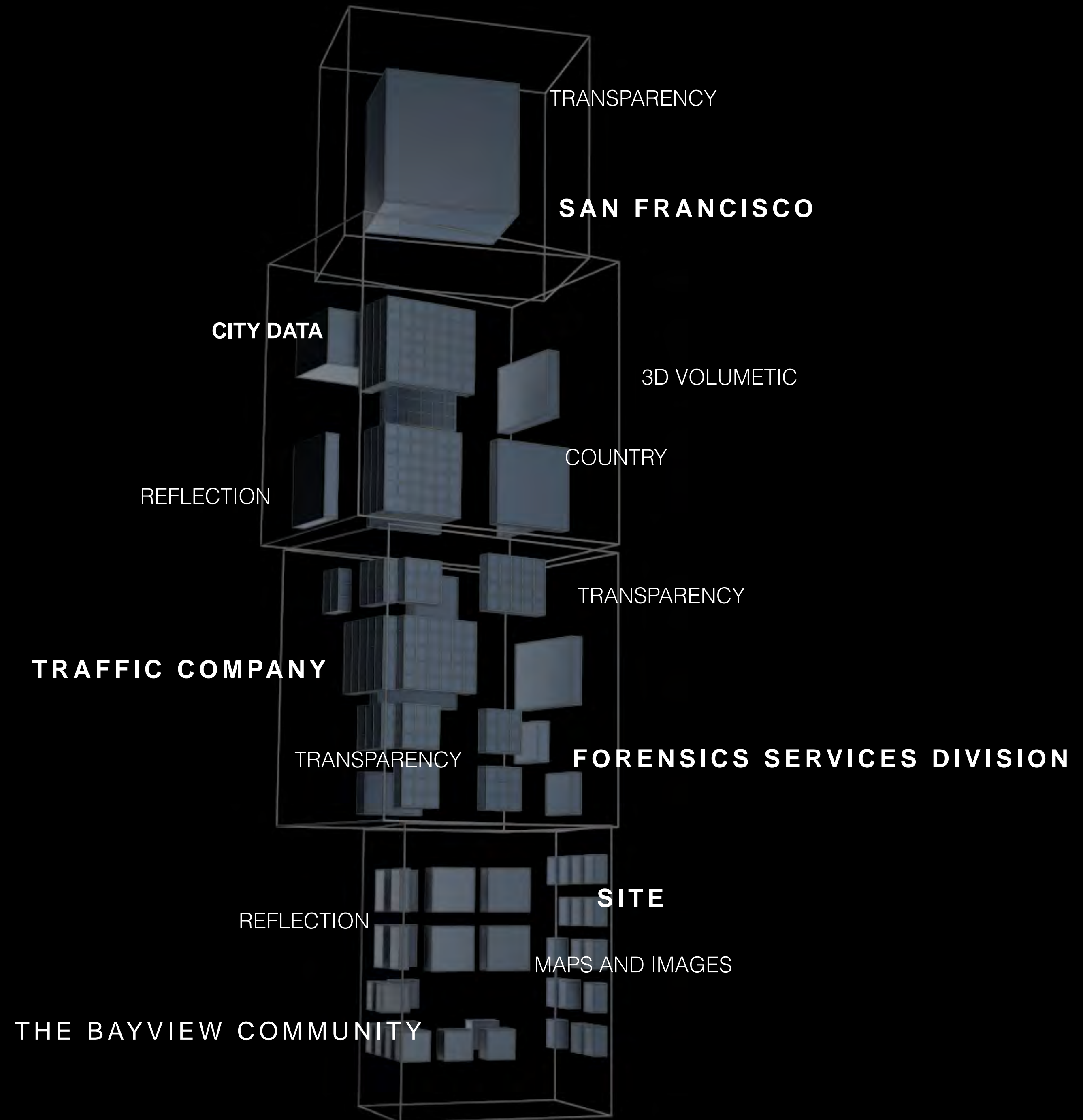
Visual Arts Commission Review

04.21. 2021

SAN FRANCISCO TRAFFIC COMPANY & FORENSICS SERVICES DIVISION ARTWORK

h ó l o s _ T E L L I N G T H E S T O R Y

hólos is experienced through a layering of many stories. It is read from near and far and through varied media. It is a story of Site, City, Community, History and Future.



h ó l o s _ C O N C E P T U A L F R A M E W O R K



FORM & STRUCTURE

The artwork is built of four transparent cubes with a common structural core. The reflective and transparent surfaces capture light & movement. Reflectivity captures glimpses of the environment, drawing attention to the relationship between community and site. An outer skin of patterned metal reinforces the patterns and provides security at lower levels.



LIGHT , PATTERN AND DATA

Site-Specific Data informs the patterning of the elements and brings a dynamic layer to the artwork narrative. Within the glass, programmable LED lights trace the patterns of the day in real time. Focused LED turns the artwork into a beacon seen from near and far.

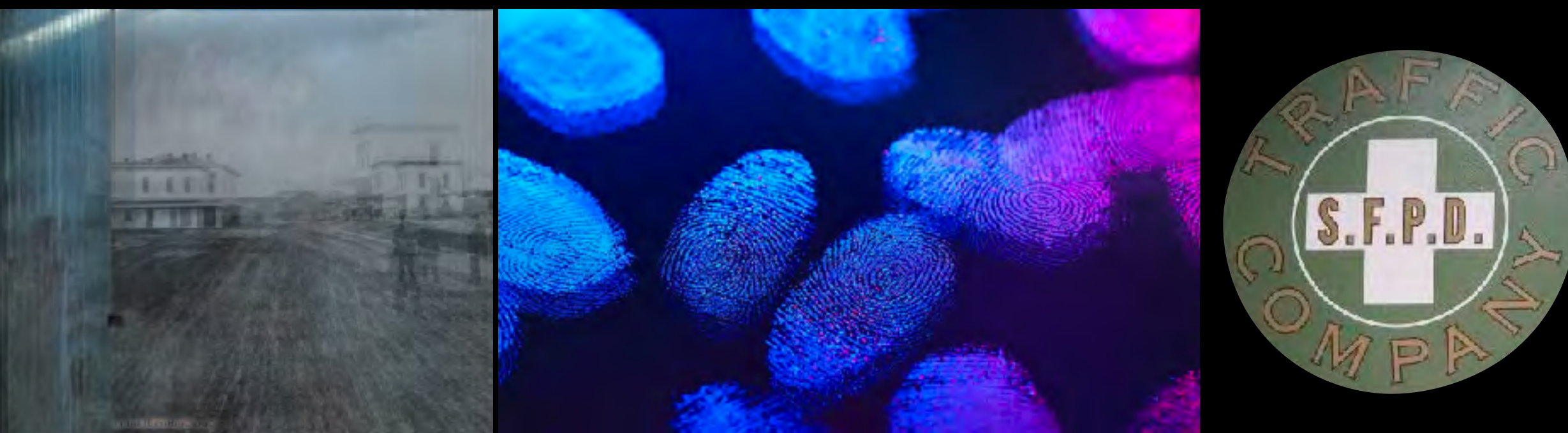
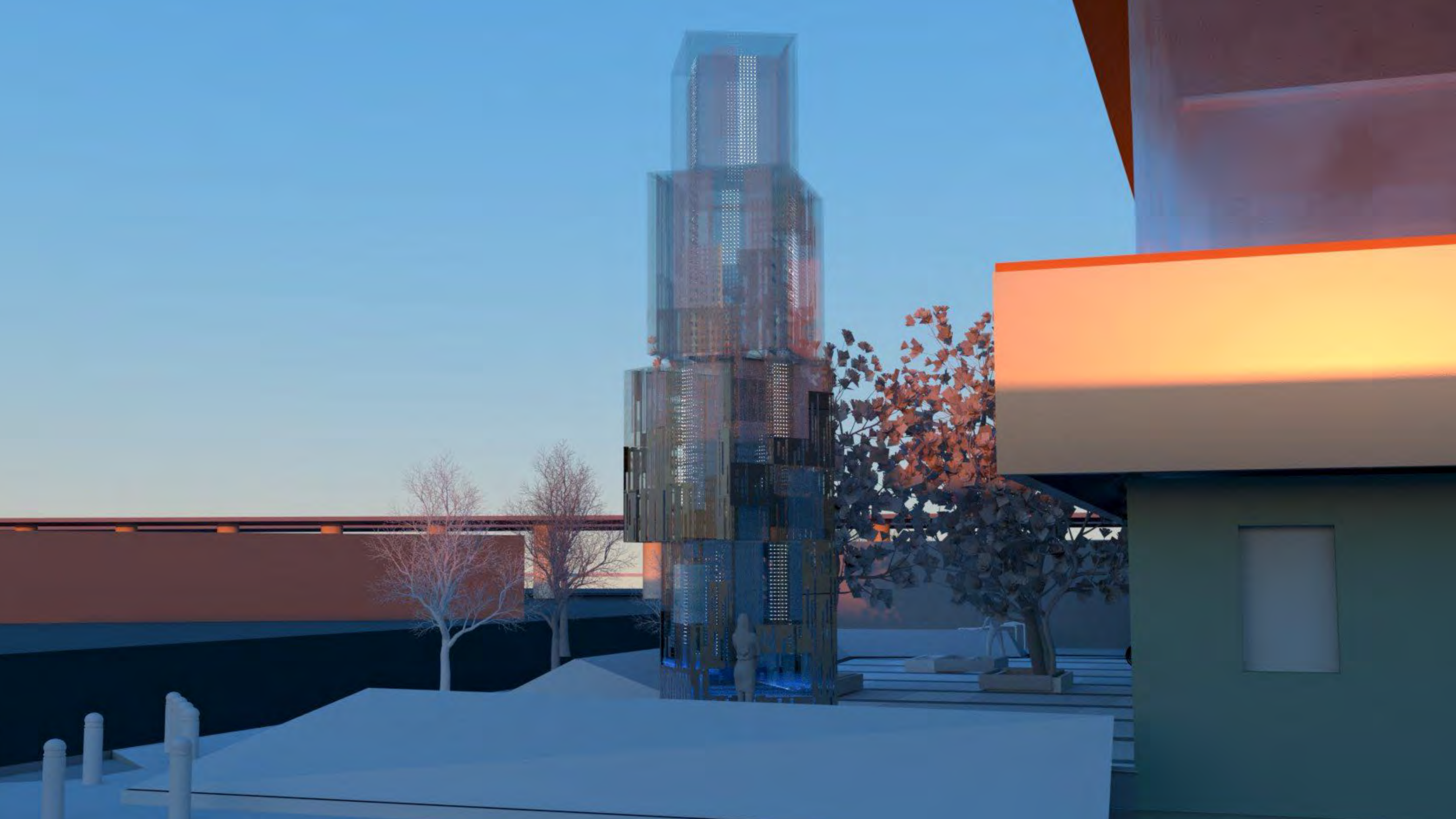


IMAGE & TEXT

Within the transparent skin is an order inspired by the forensic processes of discovery, collection and analysis. A panelized system of interlocking plates provides the internal structure for the chambers that hold a selection of image and text. A central core brings power and data through the artwork.

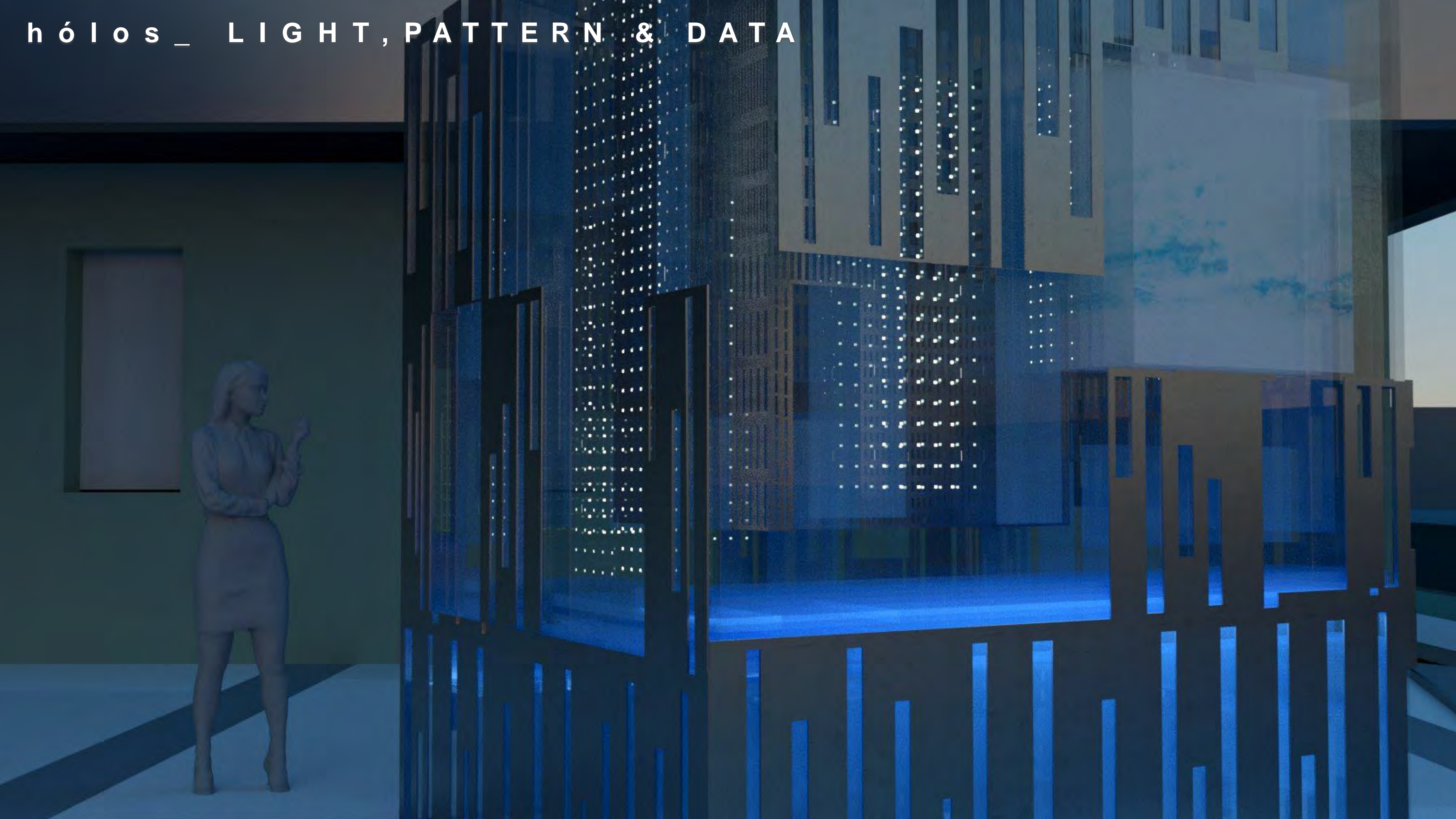
h ó l o s _ F O R M A N D S U R F A C E





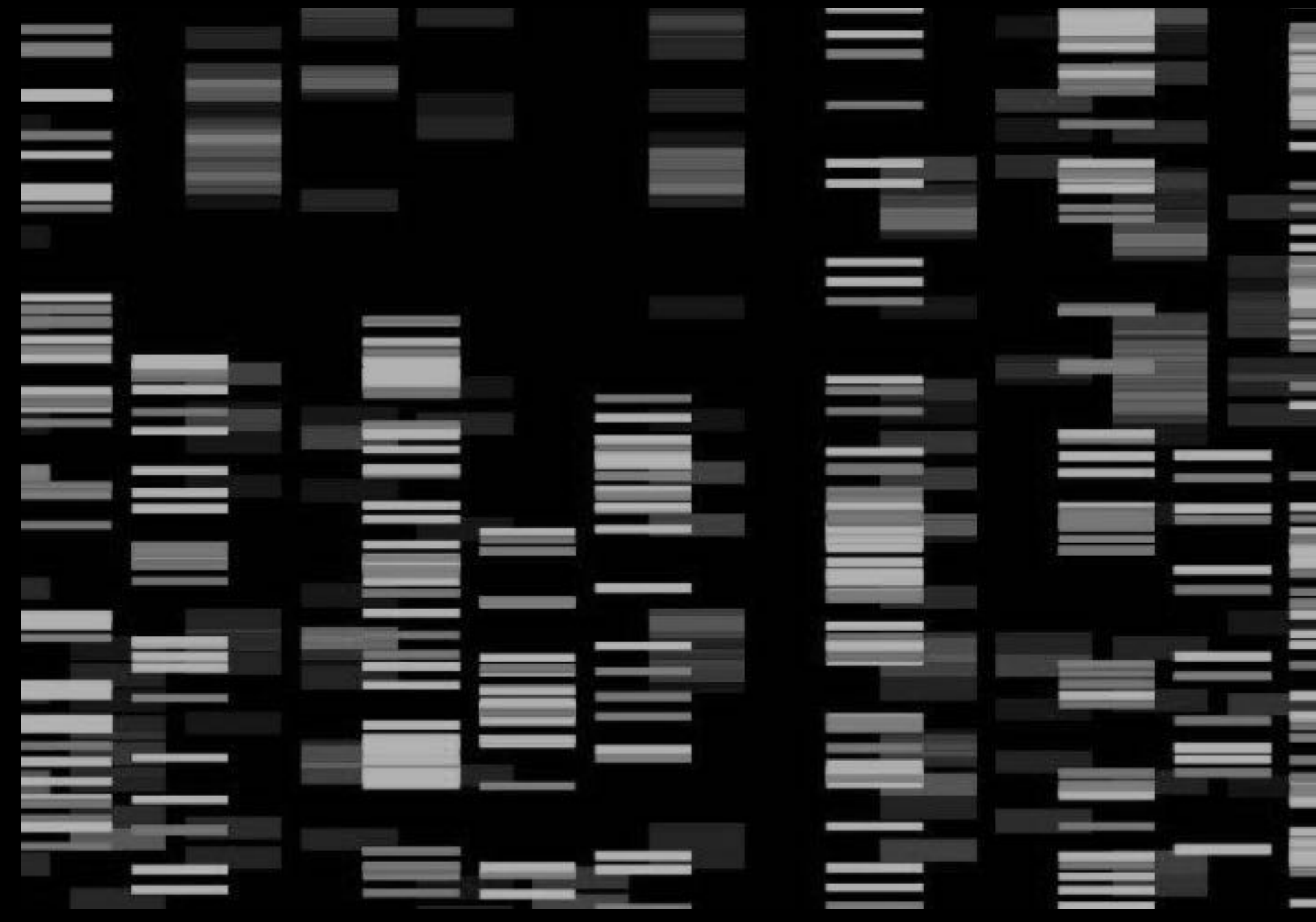
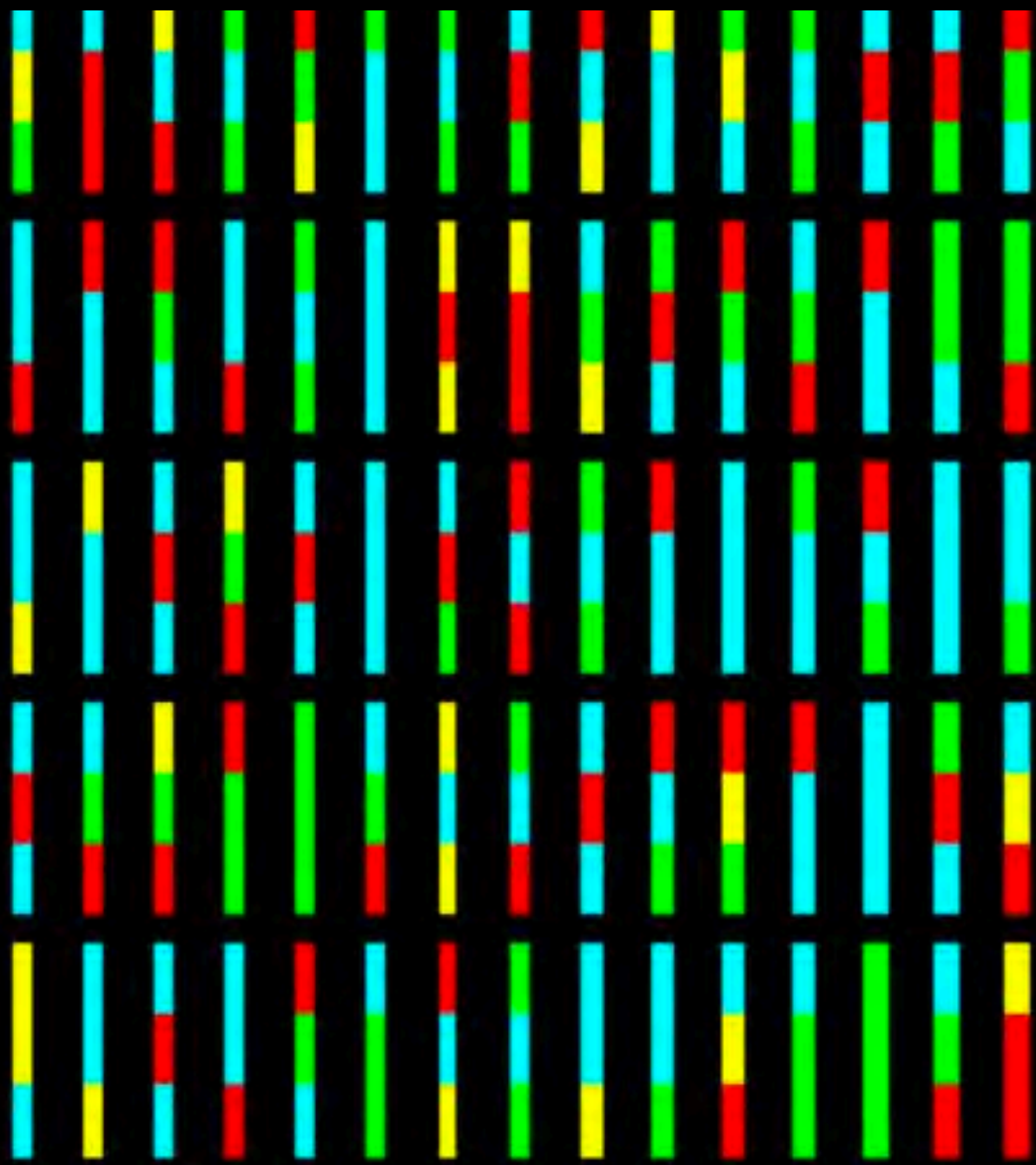


h ó l o s _ L I G H T , P A T T E R N & D A T A



h ó l o s _ L I G H T , P A T T E R N & D A T A

Parametric Algorithms derived from DNA inform the patterns, a connection to the daily work of the Forensics Division and a metaphor for the common thread that defines all of us.



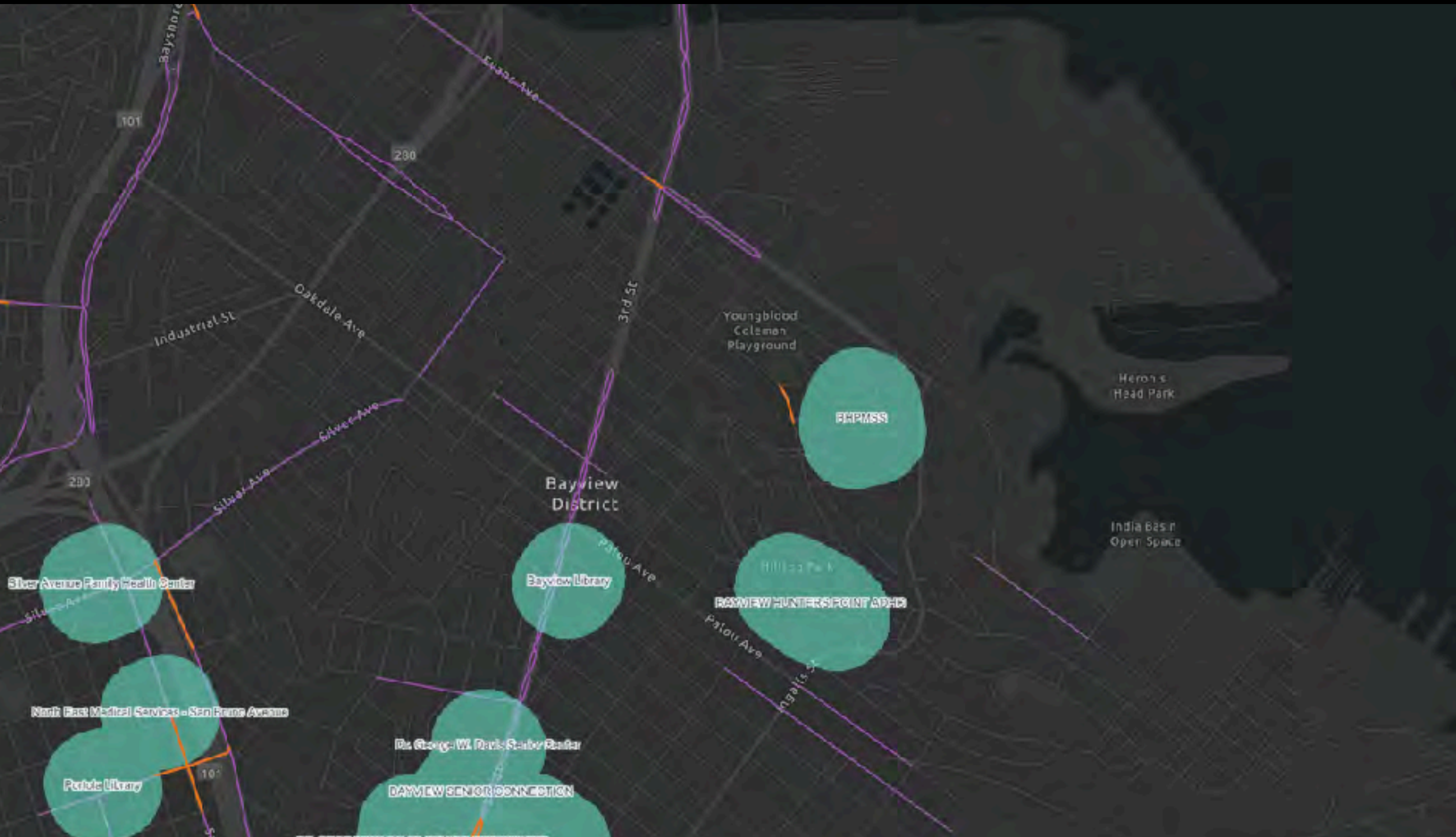
Graphical representation of the human KARYOTYPE

h ó l o s _ L I G H T , P A T T E R N & D A T A

Data streams connect first responders, City Agencies & Communities that are working together for HEALTH, SAFETY and QUALITY OF LIFE.

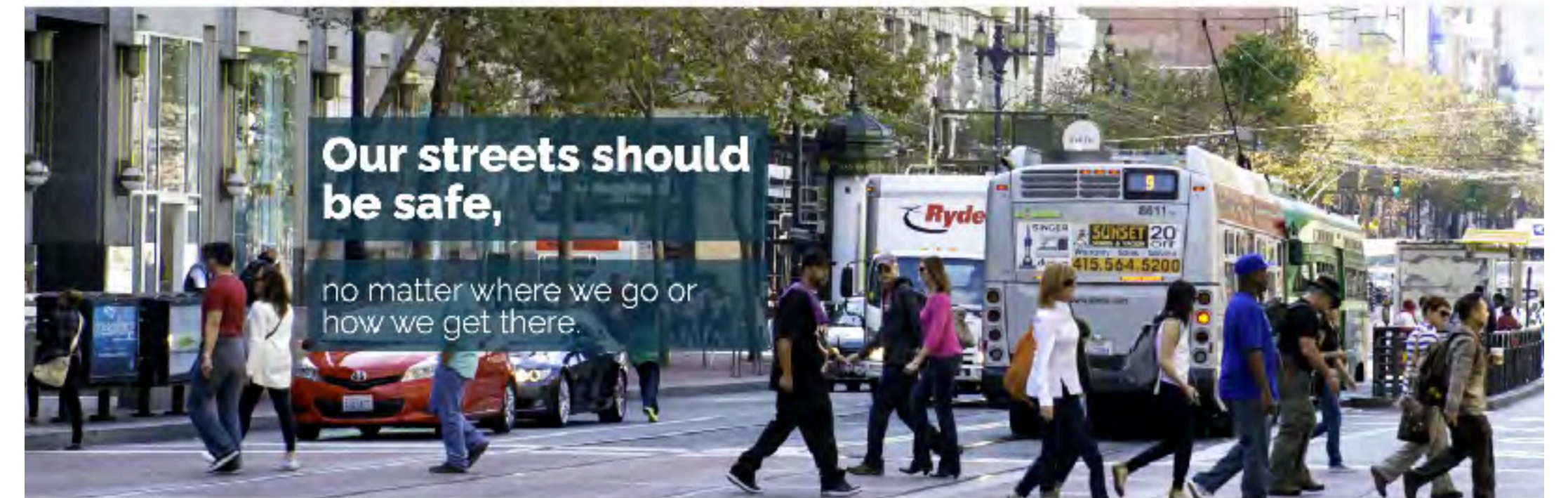
DATA SOURCES

Open Data SF
SF County Transportation Authority
SF Municipal Transportation Authority
Vision Zero SF: SFPD, SFMTA
TransBASE: SFDPH, SFMTA, SFPD
511 Open Data



As we live, work and play in the City by the Bay,

we want to feel safe as we move around.



That's what Vision Zero SF is all about.

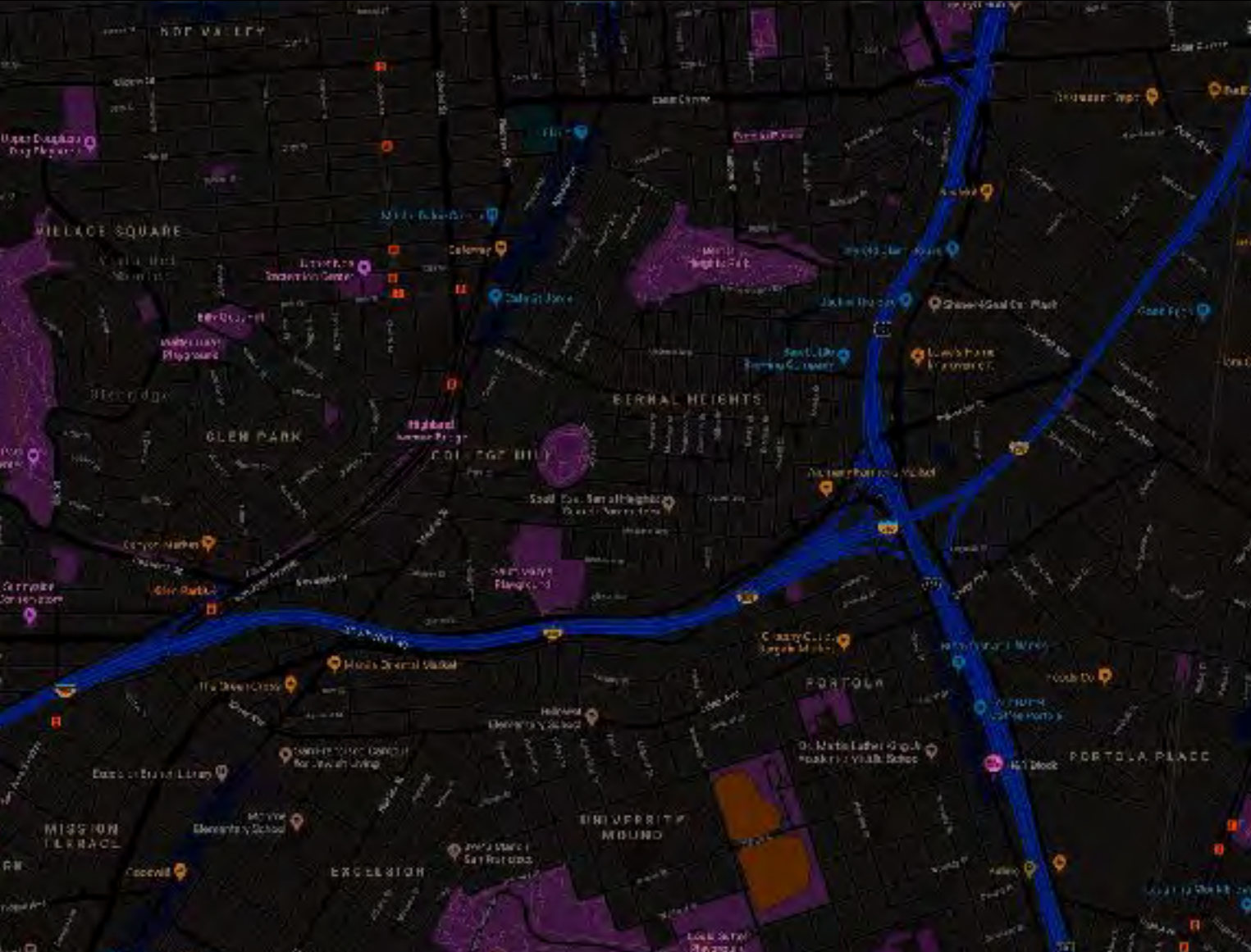
City officials, city employees and community members working together and committing to create safer streets.

DATABASES

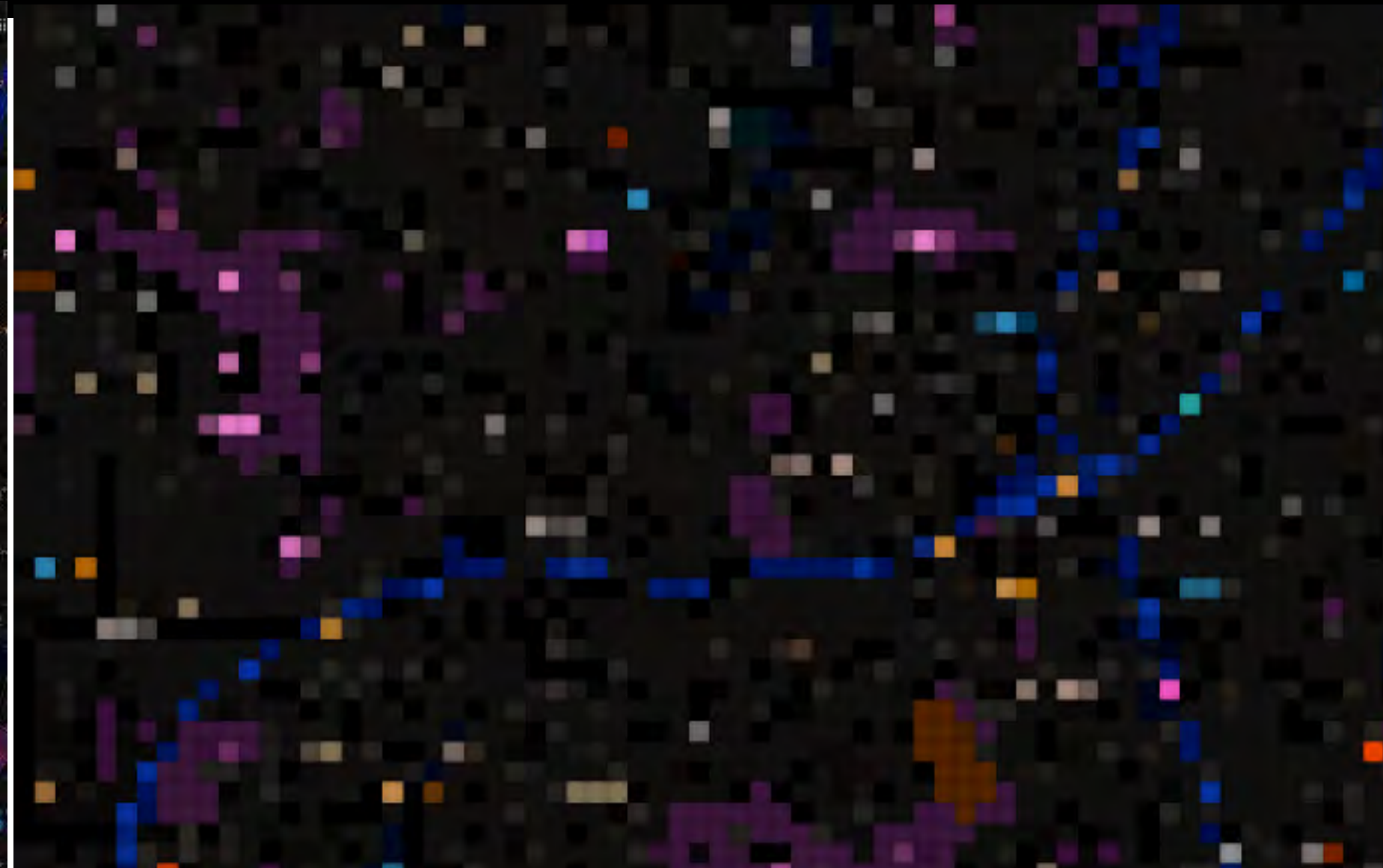
CycleTracks: GPS tracks bike user
Dynamic Traffic Patterns | Speeds
Daily Pedestrian Traffic | Bike Network
Daily Transit Riders | Transit Schedules
High-Injury Network | 511 Traffic Incidents

h ó l o s _ L I G H T , P A T T E R N & D A T A

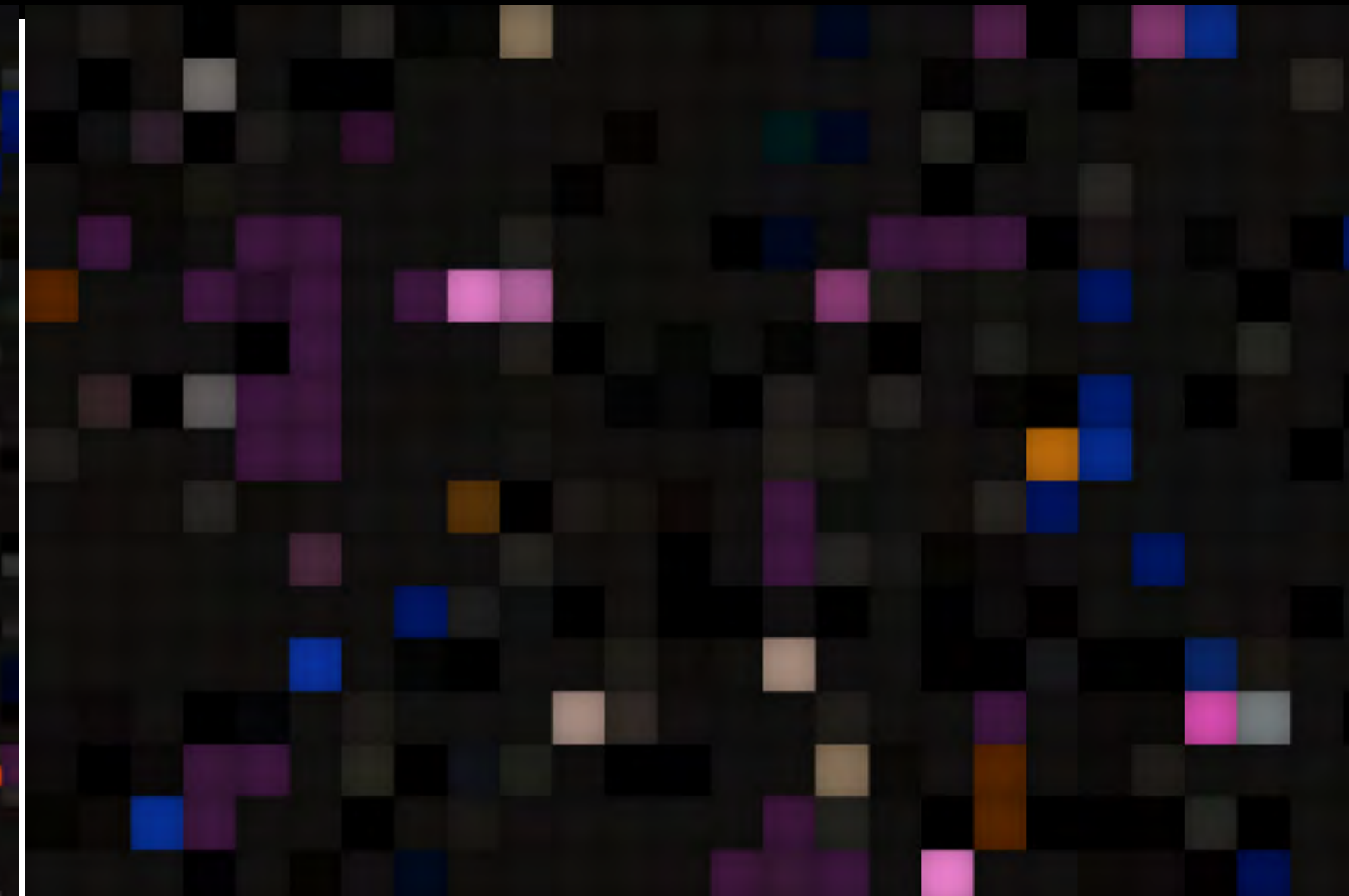
Realtime Data



Translation Process



Output To Lights

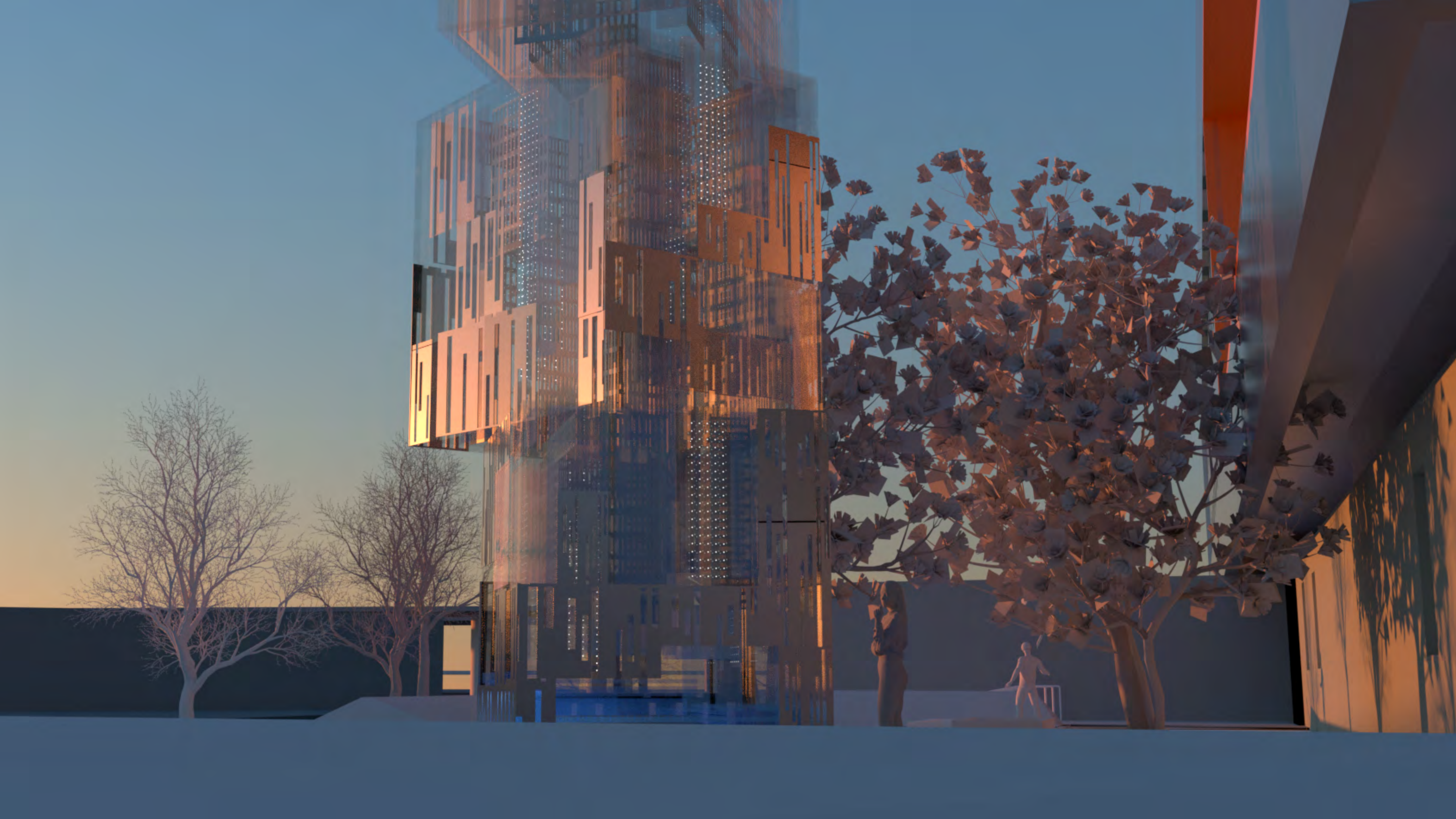


How it Works

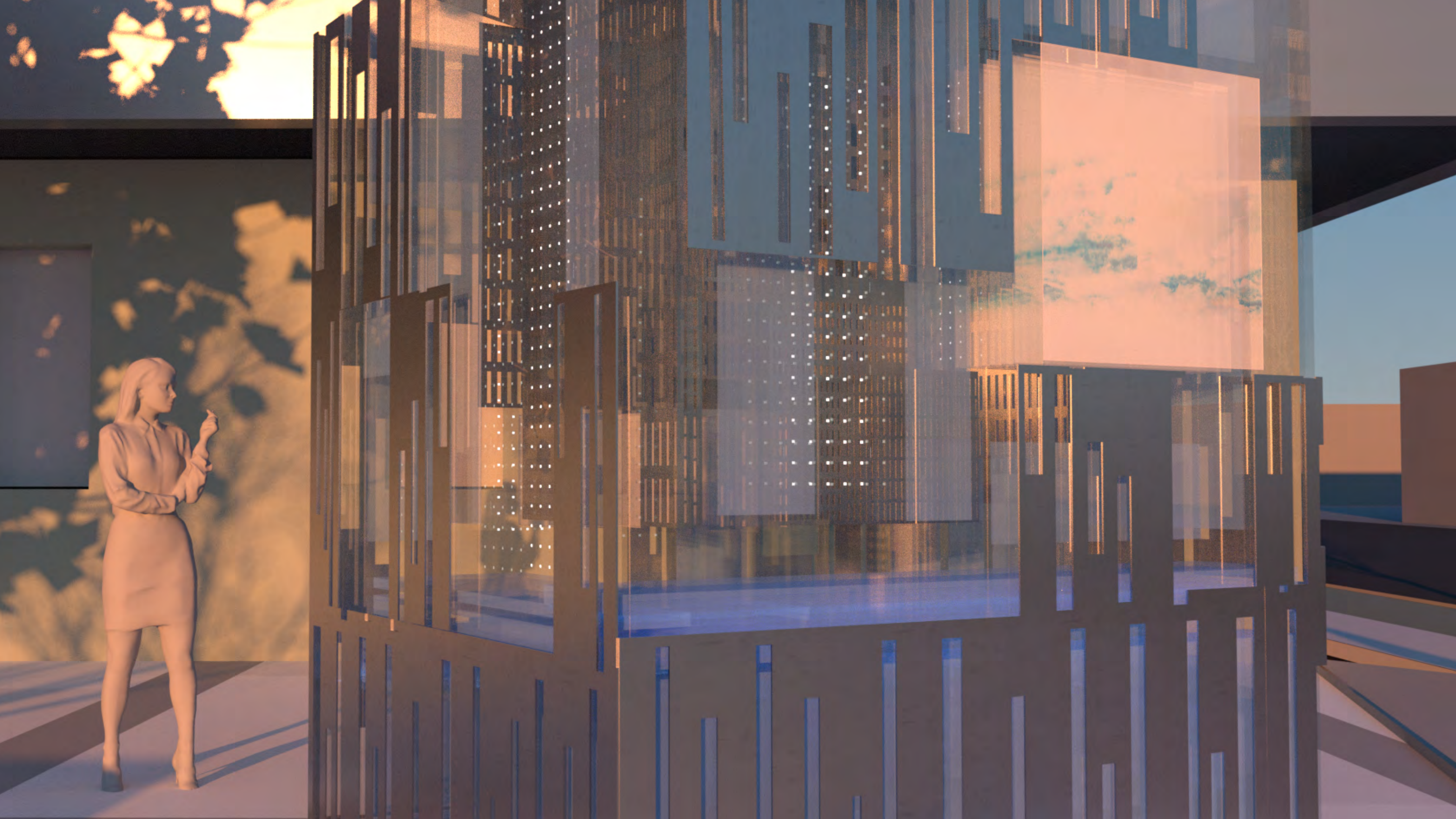
We have developed custom software that analyzes and translates data into patterns.

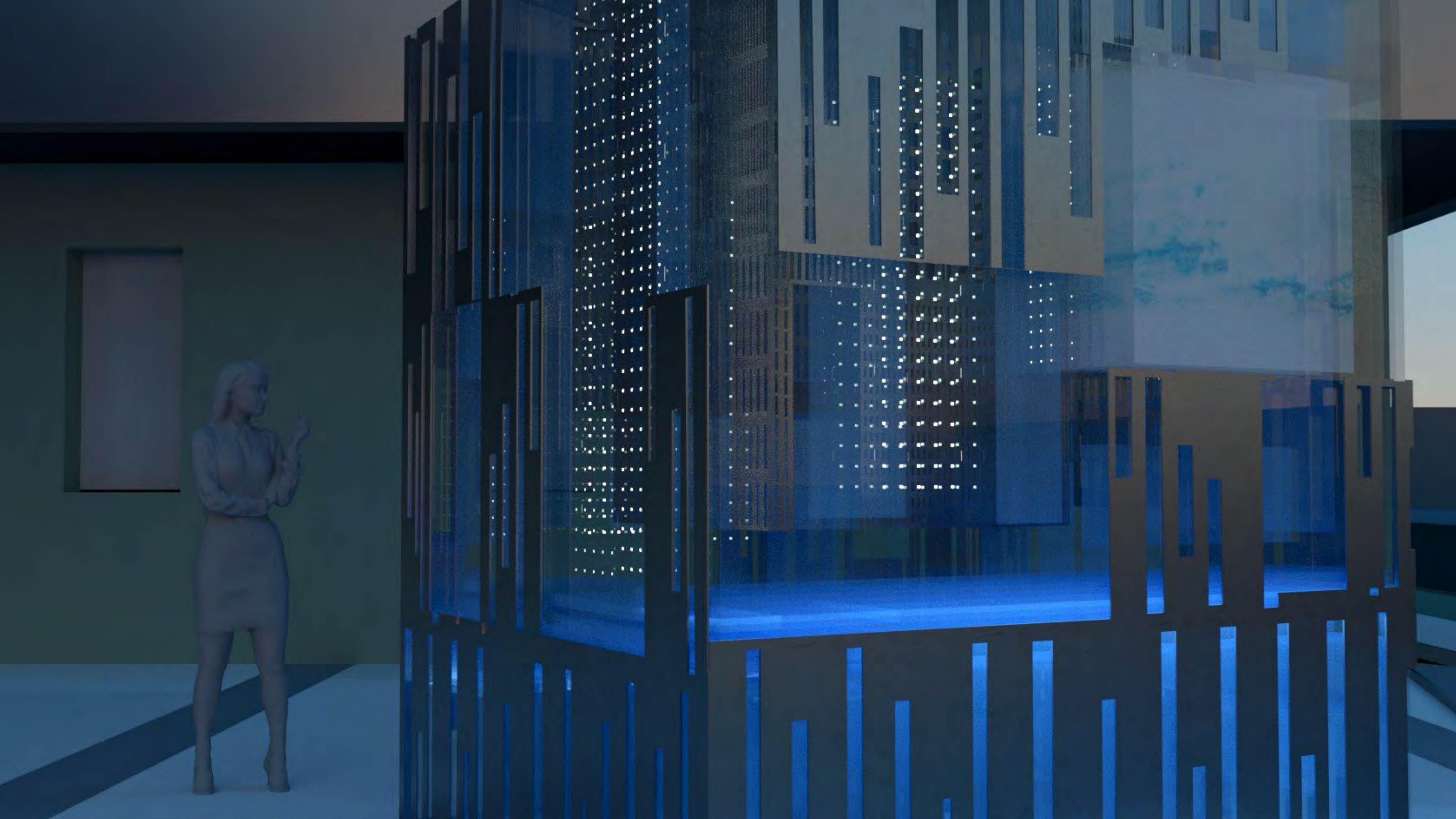
Pre-rendered patterns based on forensic data informs the overall patterns of the sculpture. Realtime and archival data from San Francisco digital records informs the dynamic timeline of the light patterns.

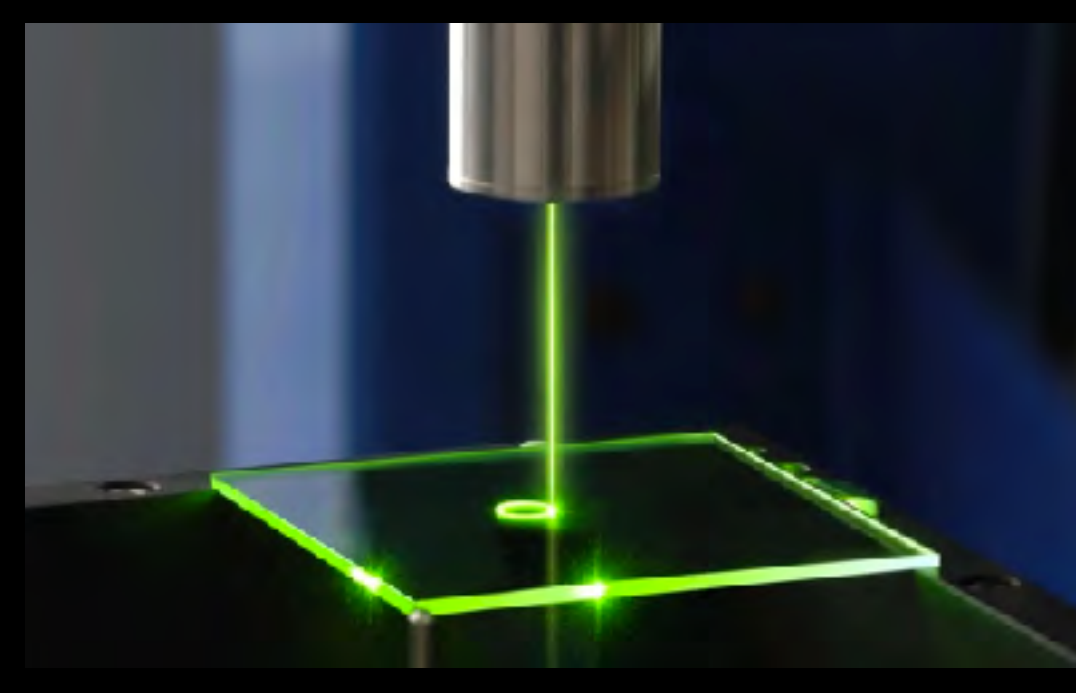
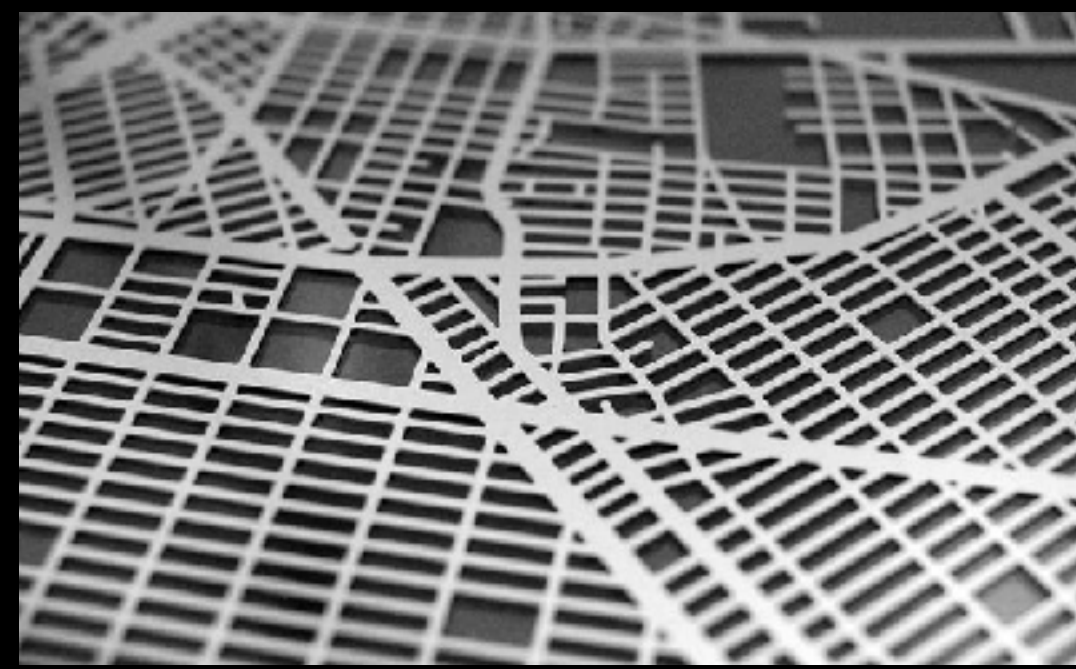
This becomes the visual library that will fuel the artwork.



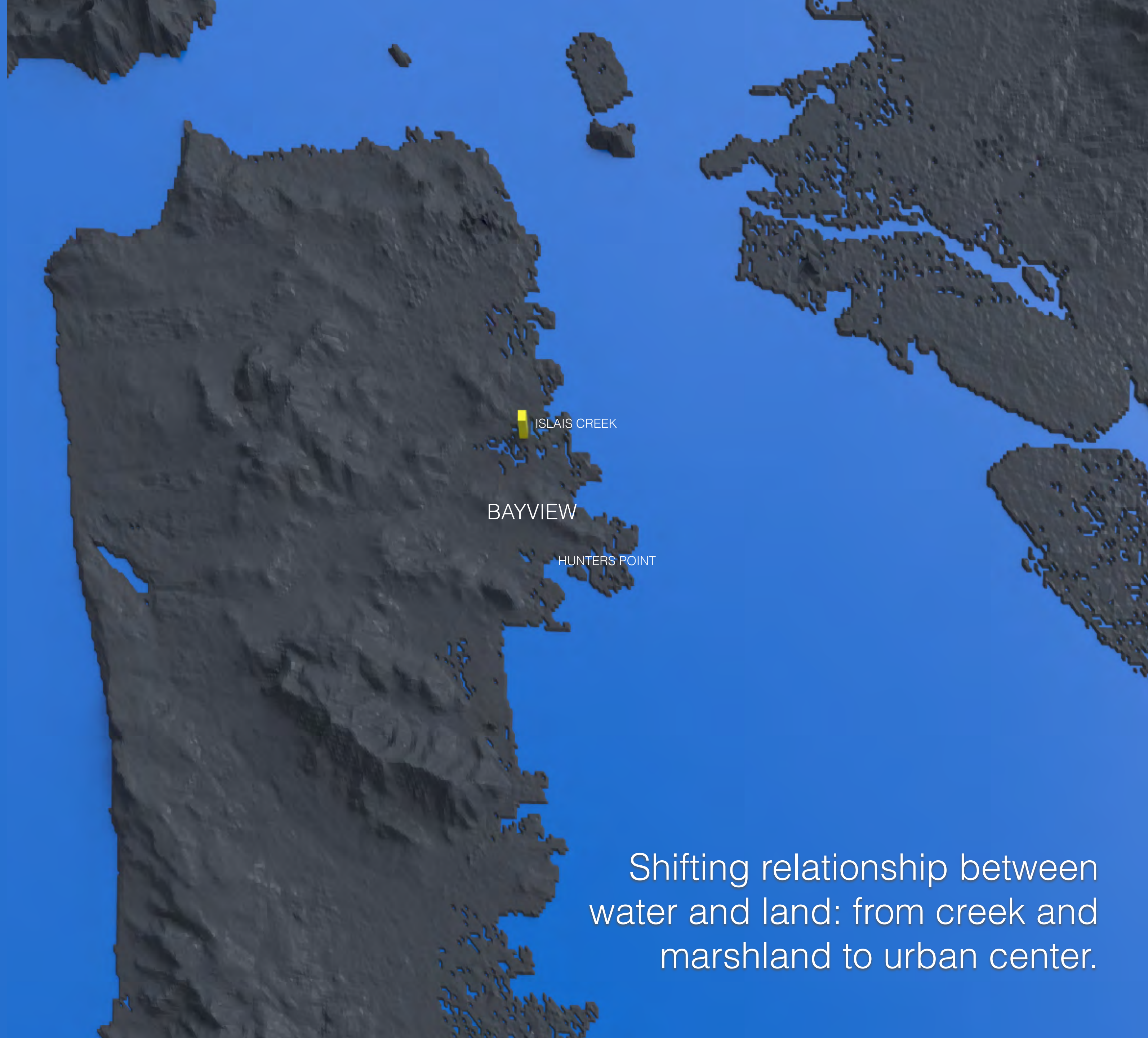








S I T E



ISLAIS CREEK

BAYVIEW

HUNTERS POINT

Shifting relationship between
water and land: from creek and
marshland to urban center.

L A N D & W A T E R

S I T E _ l a n d a n d w a t e r

1 8 6 9



1 9 4 8



2 0 1 9



M u l t - l a y e r e d I m a g e s

L a m i n a t e d i m a g e s o n a c r y l i c p a n e l s w / l i g h t i n g

BAYVIEW_historical



ISLAIS CREEK, 1915



ISLAIS CREEK, 1915



ISLAIS CREEK, 1916



ISLAIS CREEK, 1918



BAYVIEW HILL, 1933



EVANS AVE, 1940

COMMUNITY_historical



THE OLD CLAM HOUSE, 1860s



THIRD STREET, 1930

OpenSF



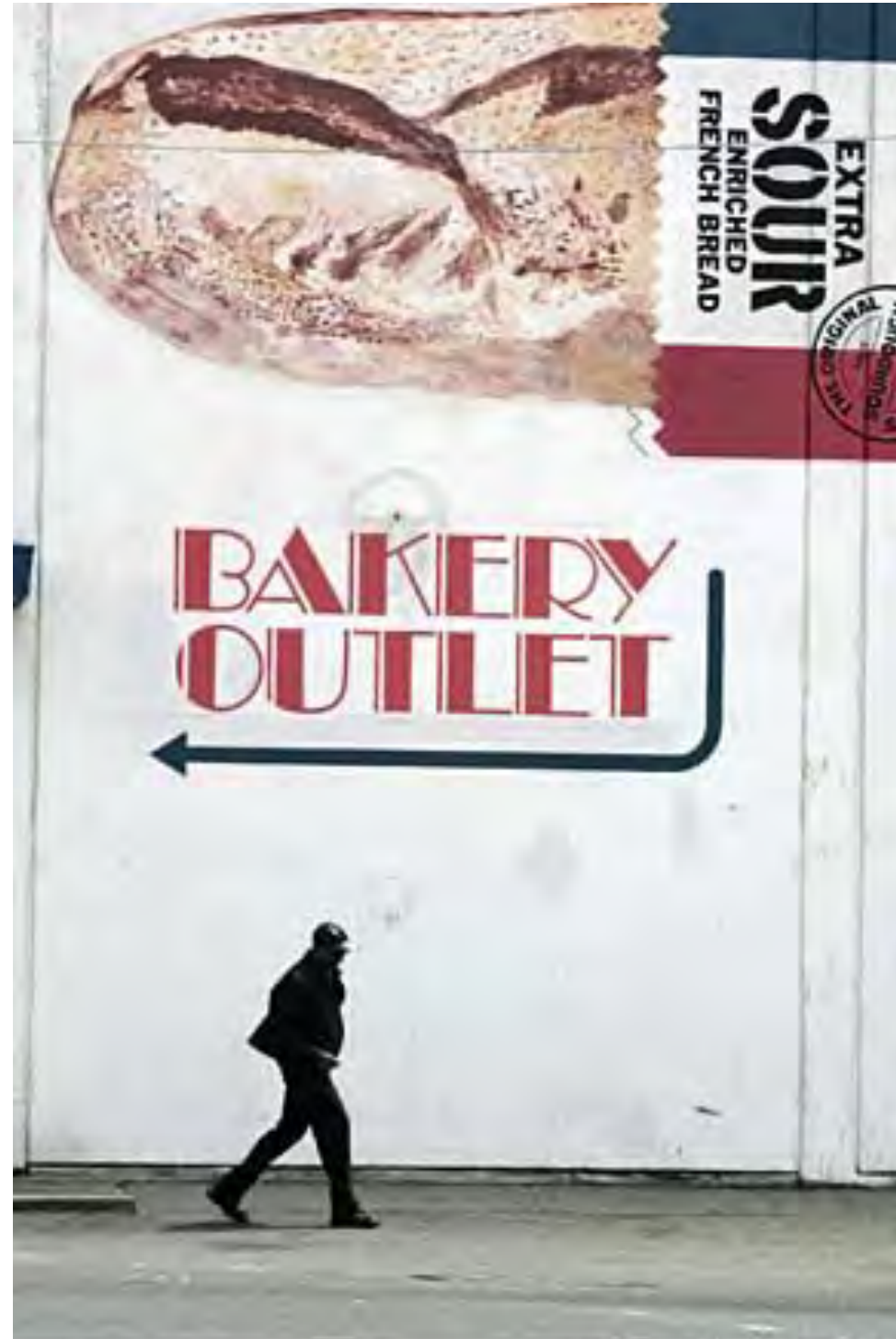
EVANS AVENUE EAST FROM THIRD STREET, 1929



Candlestick Park, 1960
https://opensfhistory.org/NeighborhoodPhotos/Candlestick_Point/stadium

OpenSFHistory.org

COMMUNITY_contemporary



<https://hoodline.com/2019/09/restored-bayview-mural-tuzuri-watu-unveiled-following-community-effort-to-save-it/>



MARY L BOOKER Bayview Community Theater Leader



RUTH WILLIAMS, 1968



The Bayview Opera House (previously South San Francisco Opera)



Bayview Opera House, 2017

TRAFFIC COMPANY_historical



TRAFFIC COMPANY_contemporary



FORENSICS SERVICES DIVISION_historical



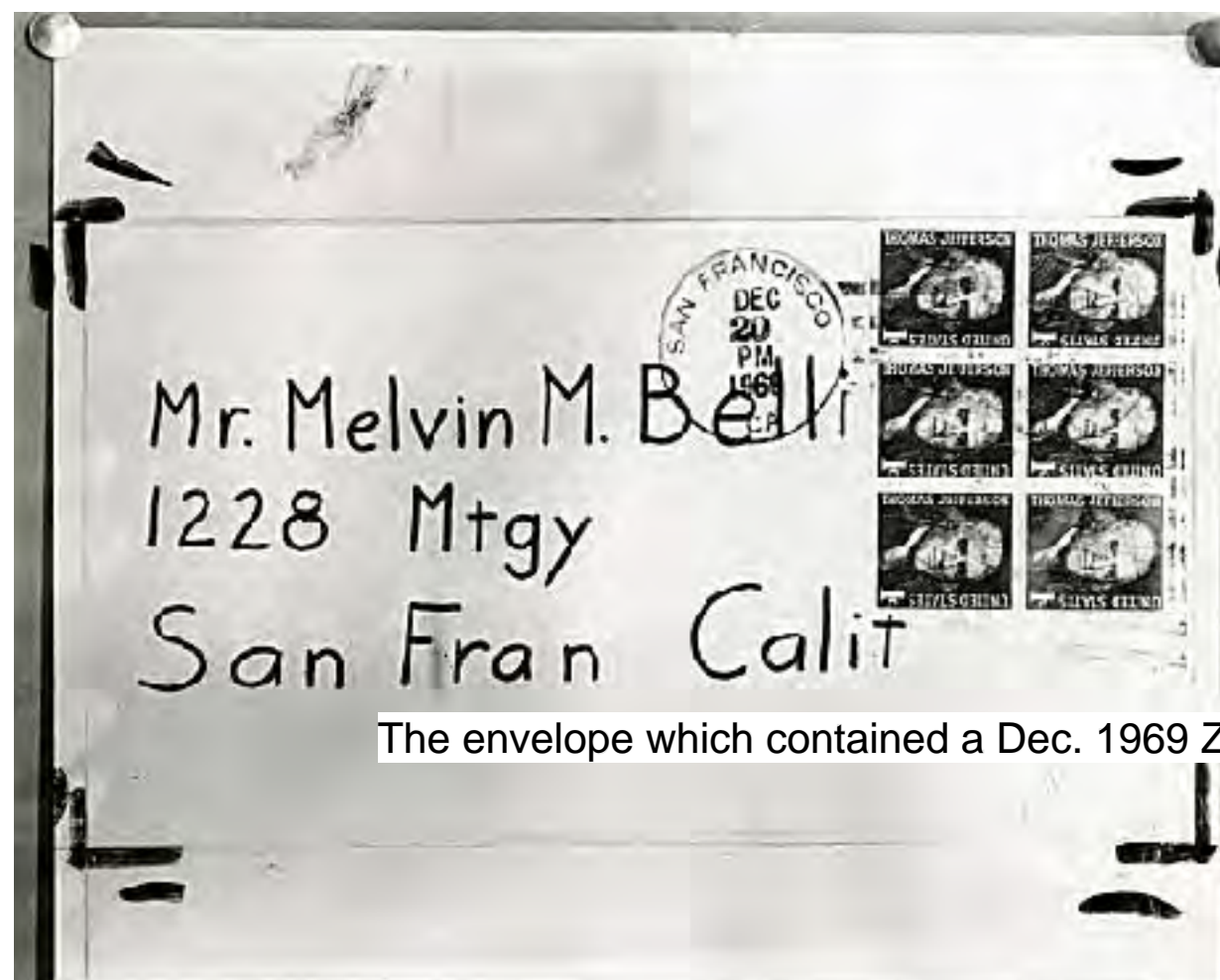
FORENSICS SERVICES DIVISION_contemporary



Ganster_CSI impound




<https://twitter.com/kron4news/status/1041886511203930112/photo/1>



Dear Melvin

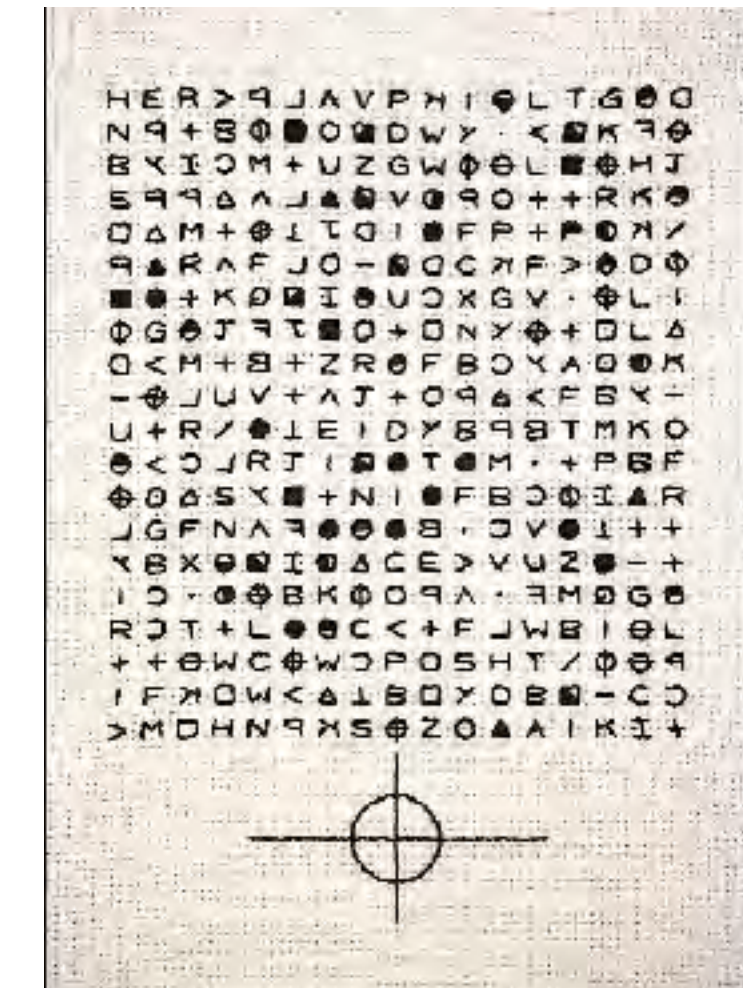
This is the Zodiac speaking I wish you a happy Christmas. The one thing I ask of you is this, please help me. I cannot reach out for help because of this thing in me wont let me. I am finding it extreemly difficult to hold it in check I am afraid I will lose control again and take my ninth & possibly tenth victim. Please help me I am drowning. At the moment the children are safe from the bomb because it is so massive to dig in & the trigger mech requires much work to get it adjusted just right. But

no mind & will loose control of my self & set the bomb up. Please help me I can not remain in control for much longer.



Mr. Melvin M. Belli
1228 Mtgy
San Fran Calif

SAN FRANCISCO
DEC 20 PM 1969
CA



The envelope which contained a Dec. 1969 Zodiac letter to San Francisco attorney Melvin Belli.

M u l t - l a y e r e d I m a g e s

M i l l e d t e x t u r e s o n a c r y l i c p a n e l s w i t h l i g h t i n g



(a)



(b)



(c)

TEXTURES

Milled textures on acrylic panels with lighting



TEXTURES

Milled textures on acrylic panels with lighting

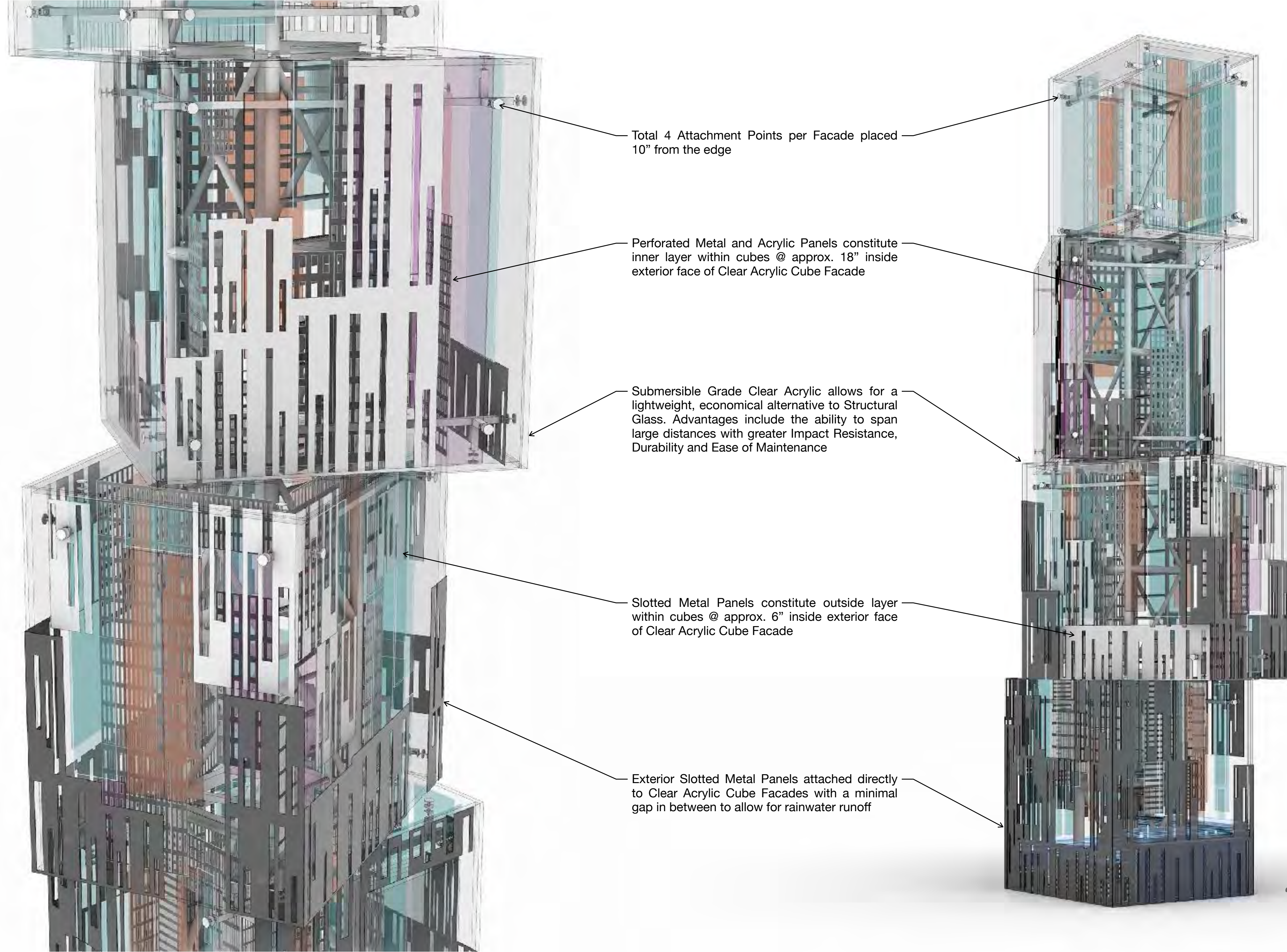


TEXTURES

Milled textures on acrylic panels with lighting



BAYVIEW LIVE



Total 4 Attachment Points per Facade placed 10" from the edge

Perforated Metal and Acrylic Panels constitute inner layer within cubes @ approx. 18" inside exterior face of Clear Acrylic Cube Facade

Submersible Grade Clear Acrylic allows for a lightweight, economical alternative to Structural Glass. Advantages include the ability to span large distances with greater Impact Resistance, Durability and Ease of Maintenance

Slotted Metal Panels constitute outside layer within cubes @ approx. 6" inside exterior face of Clear Acrylic Cube Facade

Exterior Slotted Metal Panels attached directly to Clear Acrylic Cube Facades with a minimal gap in between to allow for rainwater runoff

9' 6" + 9' 6" + 9' 6" + 8' 0" = 36' 6"



