

RECREATION AND PARK DEPARTMENT  
**SANDY TATUM LEARNING CENTER**

CIVIC DESIGN REVIEW 1 | SAN FRANCISCO ARTS COMMISSION | 03.15.2021





CLUBHOUSE

SANDY TATUM LEARNING CENTER



RECREATION AND PARK DEPARTMENT  
**SANDY TATUM LEARNING CENTER**

CIVIC DESIGN REVIEW 1 | SAN FRANCISCO ARTS COMMISSION | 03.15.2021





# First Tee - San Francisco

## Who We Are

### We build experiences that build character

We exist to enable kids to build the strength of character that empowers them through a lifetime of new challenges. By seamlessly integrating the game of golf with life skills curriculum, we create learning experiences that build inner strength, self-confidence, and resilience that kids carry to everything they do.

With the belief that all kids deserve the chance to grow in a supportive environment with mentors guiding them, we are dedicated to building programs that are accessible, welcoming, and as impactful as they are fun.

We see golf as a metaphor for life – a game with unexpected challenges and ups and downs that help build strengths beyond the technical skills to play the game. Through introspective questions, interactive games, and immersive golf exercises, we design each lesson to help kids build a better understanding of themselves and empower them to strengthen the parts of them that they take to everything they do. Research proves it works.

**Purpose:** To change lives by providing resources and programs that combat the systemic challenges facing children. We accomplish this by teaching important values such as honesty, integrity, and judgement through golf.

**Mission:** To impact the lives of young people by providing learning facilities and educational programs that promote character development and life enhancing values through the game of golf.



## Sandy Tatum Learning Center Building Project

### Points of Interest:

- First Tee-San Francisco is a leading nonprofit youth development organization that uses golf to teach kids the nine core values as a backbone (honesty, integrity, sportsmanship, respect, confidence, responsibility, perseverance, courtesy, judgement)
- First Tee-San Francisco has utilized TPC Harding Park as its program hub since 2002 in partnership with SF Recreation and Parks Department.
- Over 10,000 students visit Harding Park annually for First Tee programs. Over 15,000 students participate in First Tee- San Francisco programs annually in San Francisco and San Mateo counties.
- First Tee-San Francisco program offerings include the National Schools Program (NSP) to all 72 elementary schools in San Francisco Unified School District (8500 students annually), Future Foursome year-round intensive high impact program for 60 students, plus regular summer and after school offerings.

### Student Demographics:

- 80% of students come from low to medium income households (LMI)
- 90% of students from non-Caucasian ethnicities

### Impact:

- 91% of Future Foursome students maintained or increased their GPA
- 90% felt more confident in their social skills with peers
- 85% credited the program for their ability to appreciate diversity
- 81% of parents have reported their child showing more leadership skills
- 96% of students listed attending a 4-year college as part of their personal goal ledger

### Building Utilization:

The Sandy Tatum Learning Center will include a classroom, restrooms, indoor/outdoor golf bay, and storage. The building will serve as a learning center for students to explore STEM education including tutoring and mentoring services. The restroom will provide added safety and a necessary amenity for students, staff, and community. The Sandy Tatum Learning Center will allow First Tee-San Francisco to continue to provide and grow “game changing” programs for underserved youth for generations to come.



RECREATION AND PARK DEPARTMENT  
**SANDY TATUM LEARNING CENTER**

CIVIC DESIGN REVIEW 1 | SAN FRANCISCO ARTS COMMISSION | 03.15.2021





FENCING TO BE REPLACED

TREES TO REMAIN

TREES TO REMAIN

FENCING TO BE REPLACED



LOCATION OF FUTURE BUILDING

EXISTING CART PATH TO REMAIN

APPROACH



LOCATION OF FUTURE BUILDING

EXISTING TURF

DRIVING RANGE



RECREATION AND PARK DEPARTMENT  
**SANDY TATUM LEARNING CENTER**

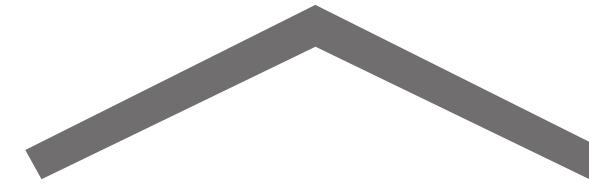
CIVIC DESIGN REVIEW 1 | SAN FRANCISCO ARTS COMMISSION | 03.15.2021







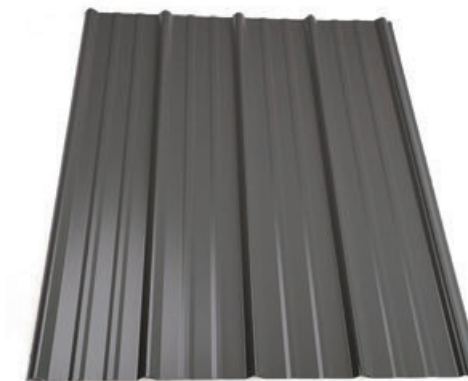
TREE



CANOPY



EXISTING BUILDING ROOF MATERIAL



METAL ROOF





**SITE PLAN** SCALE: 1" = 60'-0"

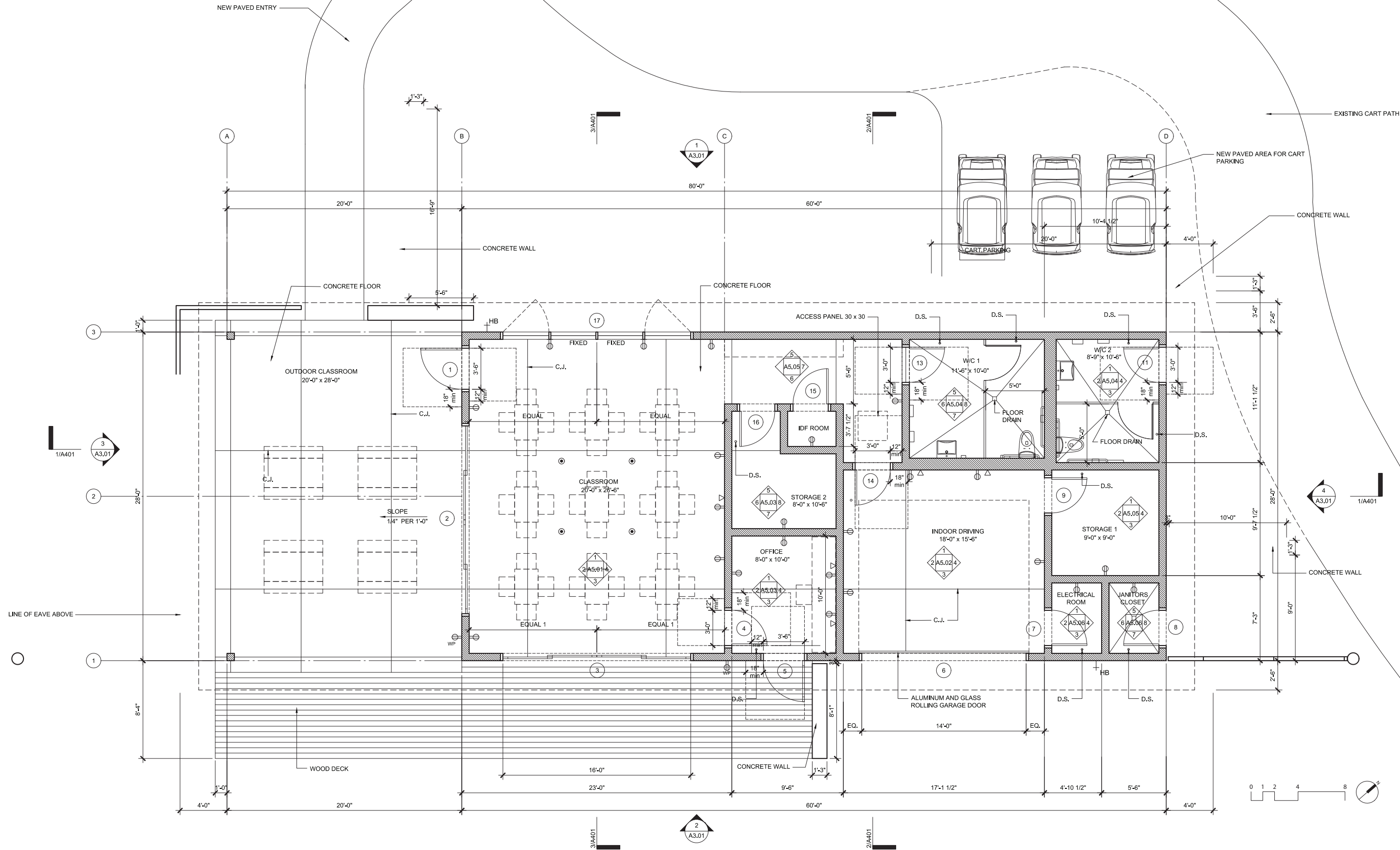


RECREATION AND PARK DEPARTMENT  
**SANDY TATUM LEARNING CENTER**

CIVIC DESIGN REVIEW 1 | SAN FRANCISCO ARTS COMMISSION | 03.15.2021







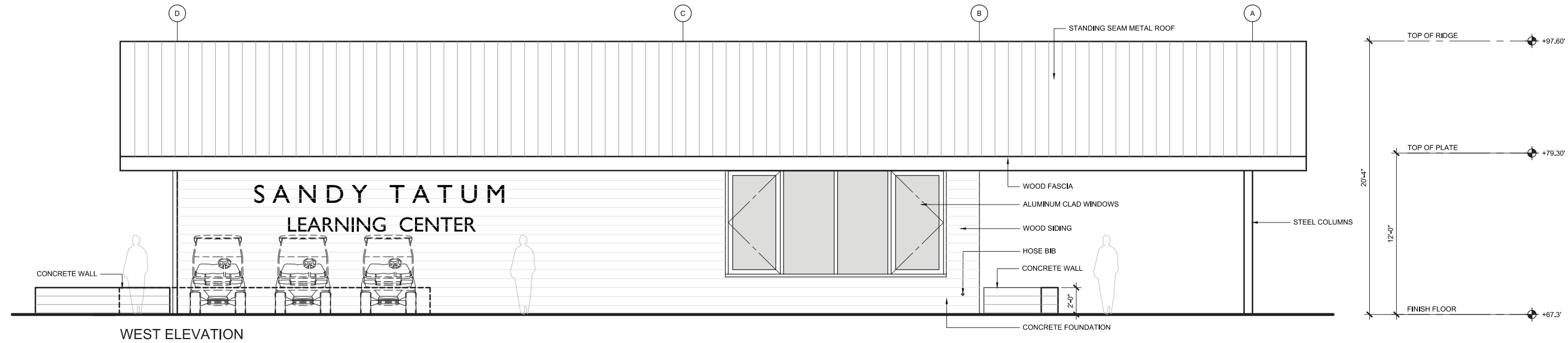
**FLOOR PLAN** SCALE: 1/8" = 1'-0"  
 1680 SF CONDITIONED 560 SF COVERED



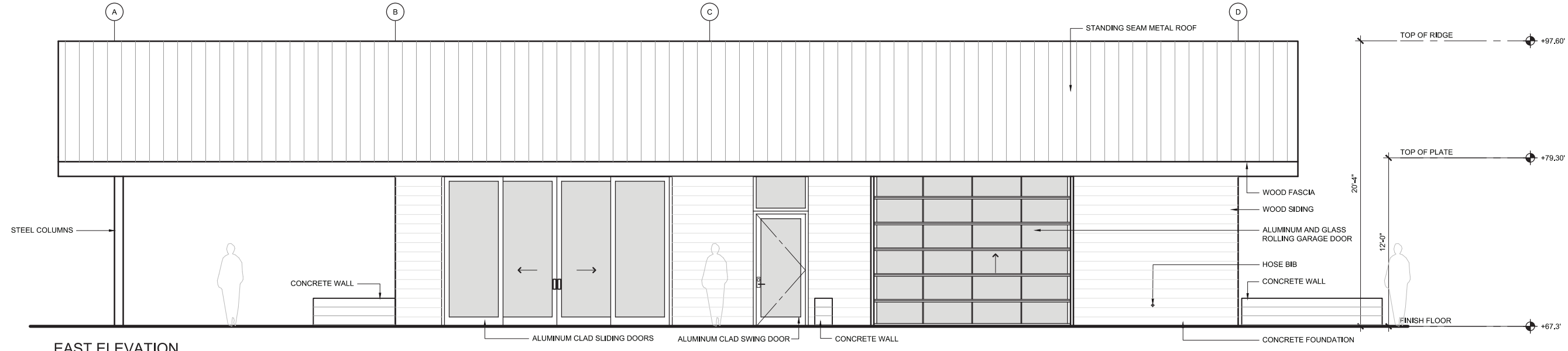
RECREATION AND PARK DEPARTMENT  
**SANDY TATUM LEARNING CENTER**

CIVIC DESIGN REVIEW 1 | SAN FRANCISCO ARTS COMMISSION | 03.15.2021

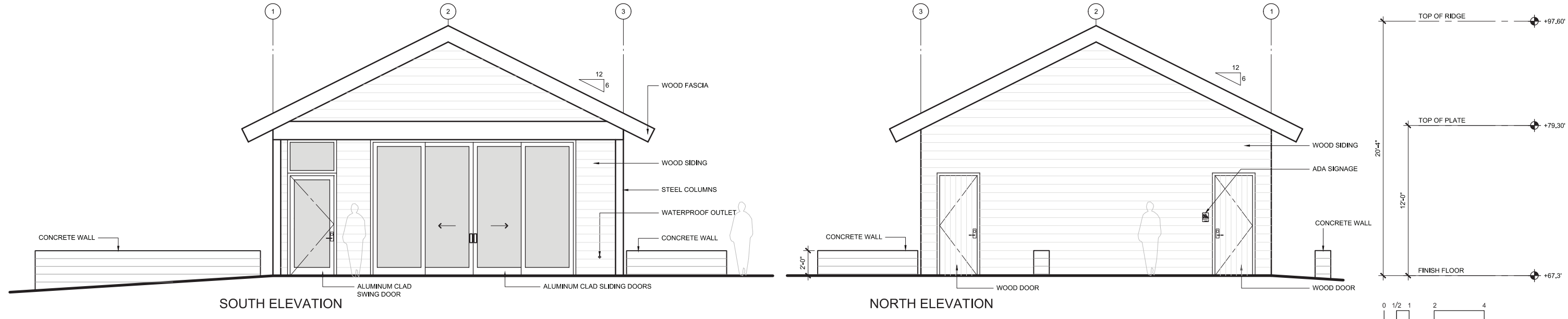




WEST ELEVATION



EAST ELEVATION



SOUTH ELEVATION

NORTH ELEVATION

ELEVATIONS SCALE: 1/8" = 1'-0"



RECREATION AND PARK DEPARTMENT  
**SANDY TATUM LEARNING CENTER**

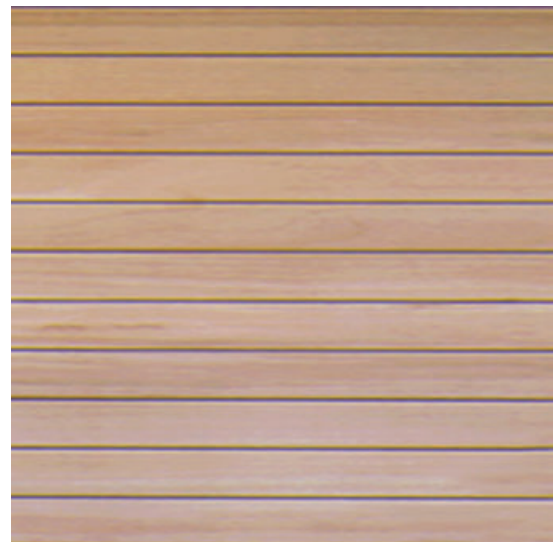
CIVIC DESIGN REVIEW 1 | SAN FRANCISCO ARTS COMMISSION | 03.15.2021







METAL ROOF



WOOD SIDING



CONCRETE FLOOR



SITE FURNISHINGS



RECREATION AND PARK DEPARTMENT  
**SANDY TATUM LEARNING CENTER**

CIVIC DESIGN REVIEW 1 | SAN FRANCISCO ARTS COMMISSION | 03.15.2021







ENTRY



RECREATION AND PARK DEPARTMENT  
**SANDY TATUM LEARNING CENTER**

CIVIC DESIGN REVIEW 1 | SAN FRANCISCO ARTS COMMISSION | 03.15.2021







DRIVING RANGE



RECREATION AND PARK DEPARTMENT  
**SANDY TATUM LEARNING CENTER**

CIVIC DESIGN REVIEW 1 | SAN FRANCISCO ARTS COMMISSION | 03.15.2021

