

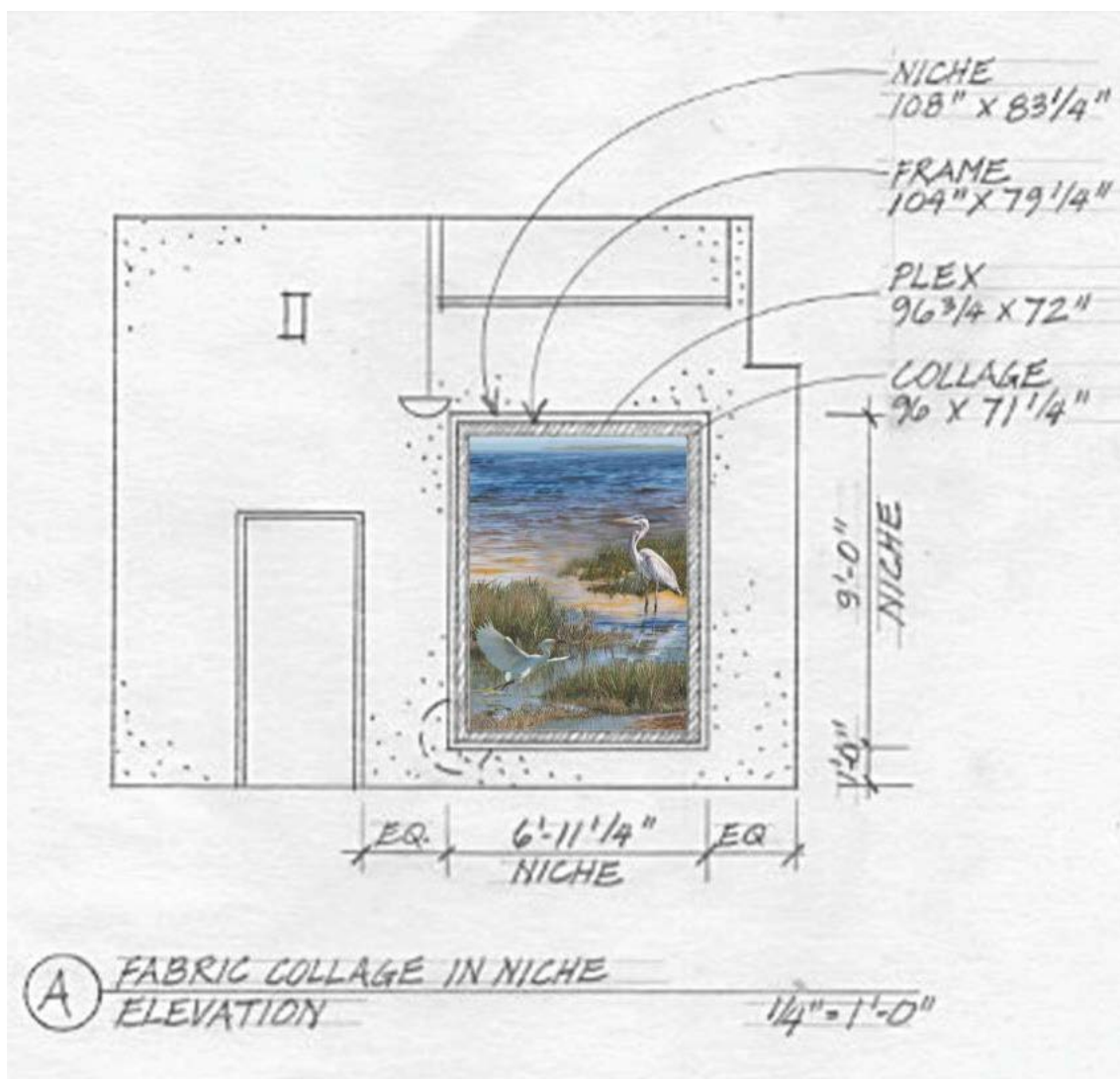
## Staff Report

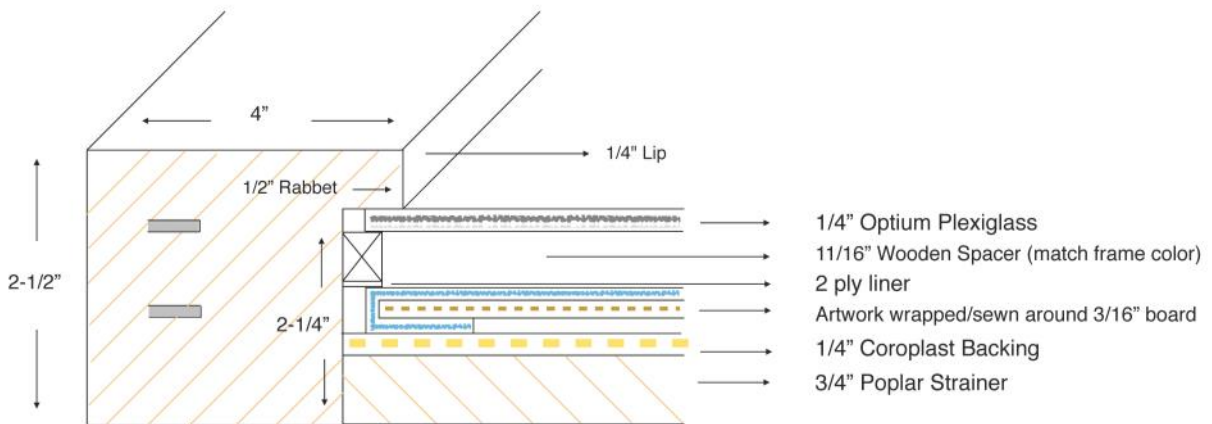
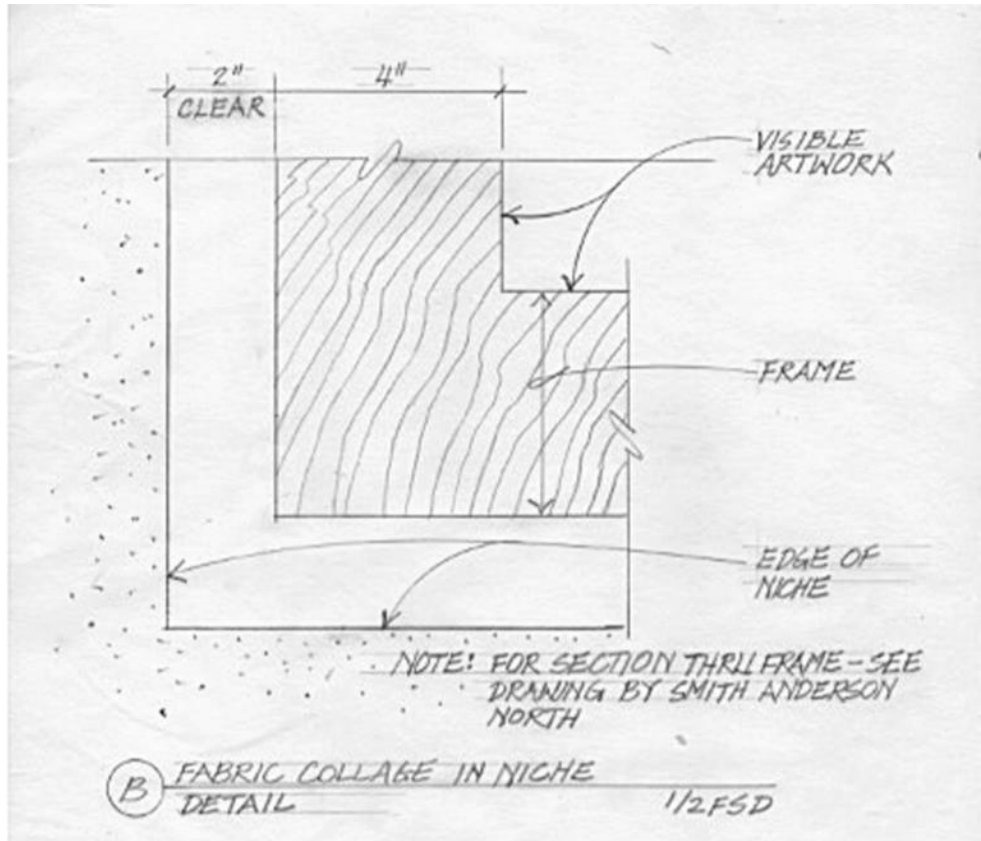
**Date:** September 12, 2016  
**To:** Visual Arts Commissioners  
**From:** Mary Chou, Project Manager  
**Re:** Office of the Chief Medical Examiner – Entry Lobby

---

The following are the final Design deliverables for the artwork by Merle, including the final layout of the framed artwork in the niche, the dimensions of the frame, and samples of final texture of collage from past collages. A sample of final color and finish of the frame will be presented at the meeting.

**Motion:** Motion to approve Design deliverables for Merle Axelrad's artwork, *The Sentinel*, for the Office of the Chief Medical Examiner.





Frame drawing by Smith Andersen North

Samples of Textures

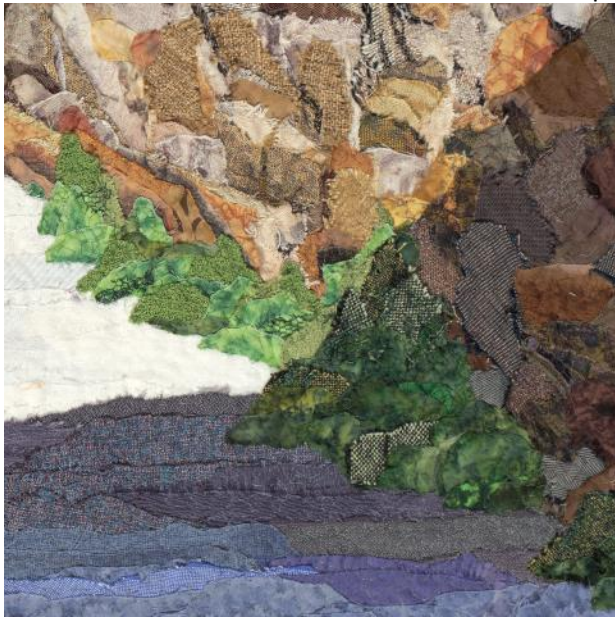


Complete piece to the left, details from piece below.





Complete piece to the left, details from piece below.





Complete piece to the left, details from piece below.

