

THE C.G. JUNG
INSTITUTE OF
SAN FRANCISCO

2610

THE C.G. JUNG
INSTITUTE OF
SAN FRANCISCO



2421 Fourth Street
Berkeley, California 94710
510.649.1414
www.TrachtenbergArch.com

Consultants:
KISTER, SAVIO & REI
825 SAN PABLO, CA
PINOLE, CA 94564

CARL JUNG INSTITUTE

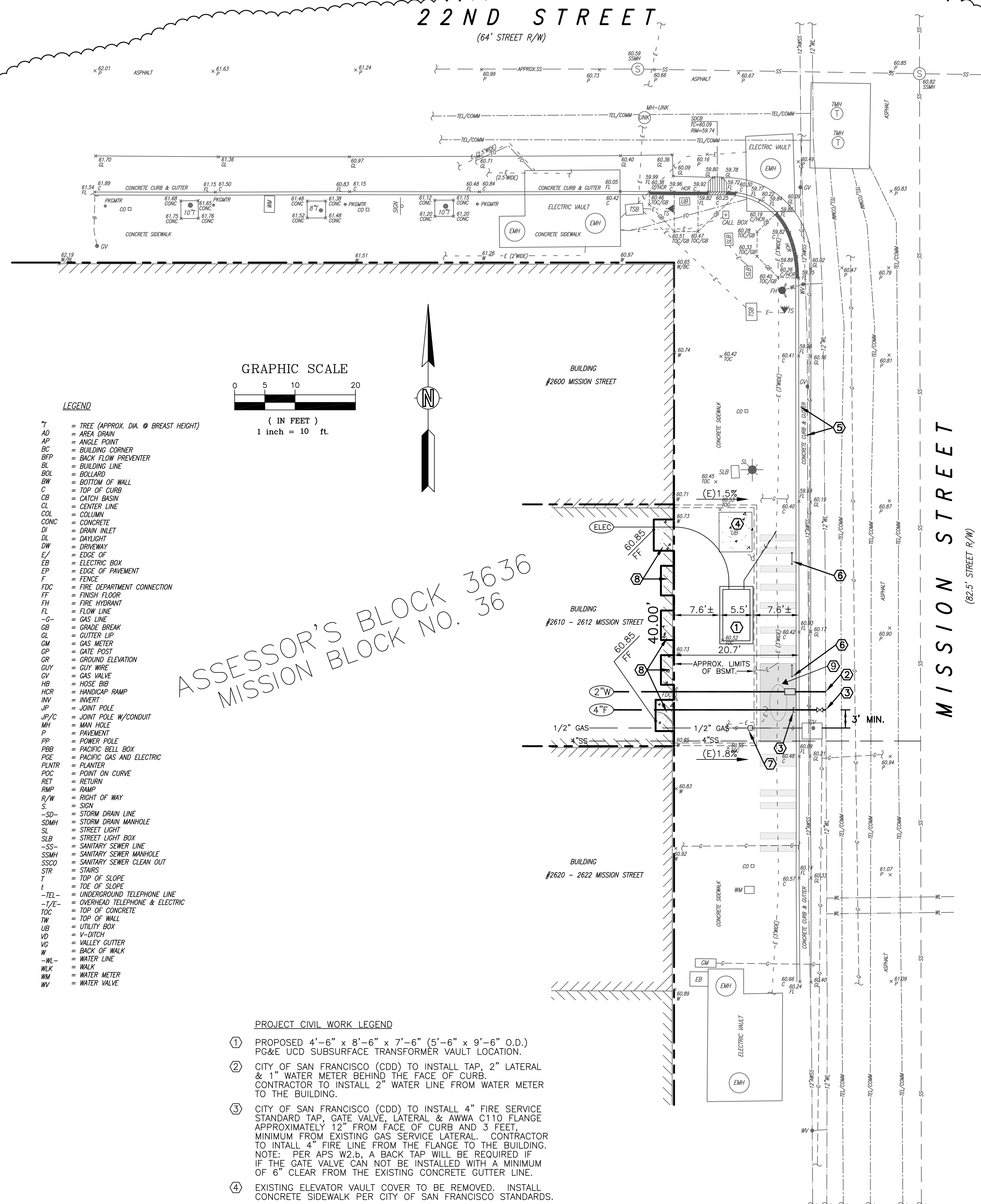
2610 MISSION STREET
APN:
SAN FRANCISCO, CA 94110

REVISION	DATE	DESCRIPTION
△	3/22/19	PLANNING DEPARTMENT ISSUE
△	7/5/19	BUILDING DEPARTMENT REVIEW
△	8/7/19	VAULT ENCROACHMENT PERMIT
△	9/19/19	TRANSFORMER VAULT REVISION
△	10/30/19	ISSUED FOR BID
△	3/06/20	PG&E REVISIONS
△	4/17/20	ASI No. 1 - PG&E Revisions
△	8/06/20	ENCROACHMENT PERMIT R2
△	10/22/20	ENCROACHMENT PERMIT RESPONSE
△	1/7/21	ENCROACHMENT PERMIT REVISIONS
△	3/09/21	MISCELLANEOUS REVISIONS

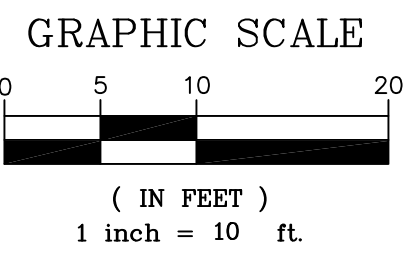
ALL DRAWINGS AND WRITTEN MATERIAL APPEARING HEREIN CONSTITUTE ORIGINAL AND UNPUBLISHED WORK OF THE ARCHITECT AND MAY NOT BE DUPLICATED, USED OR DISCLOSED WITHOUT WRITTEN CONSENT OF TRACHTENBERG ARCHITECTS.

JOB: 1814 DRAWN BY: MLR
SCALE: 1"=10' PHASE: CD
SHEET:

CIVIL SITE PLAN



BENCHMARK:
CUT CROSS ON TOP OF THE GRANITE
COPING AT THE SOUTHEAST CORNER
MISSION STREET & 22ND STREET
ELEVATION = 61.197' CITY OF SAN
FRANCISCO DATUM.
+



LEGEND

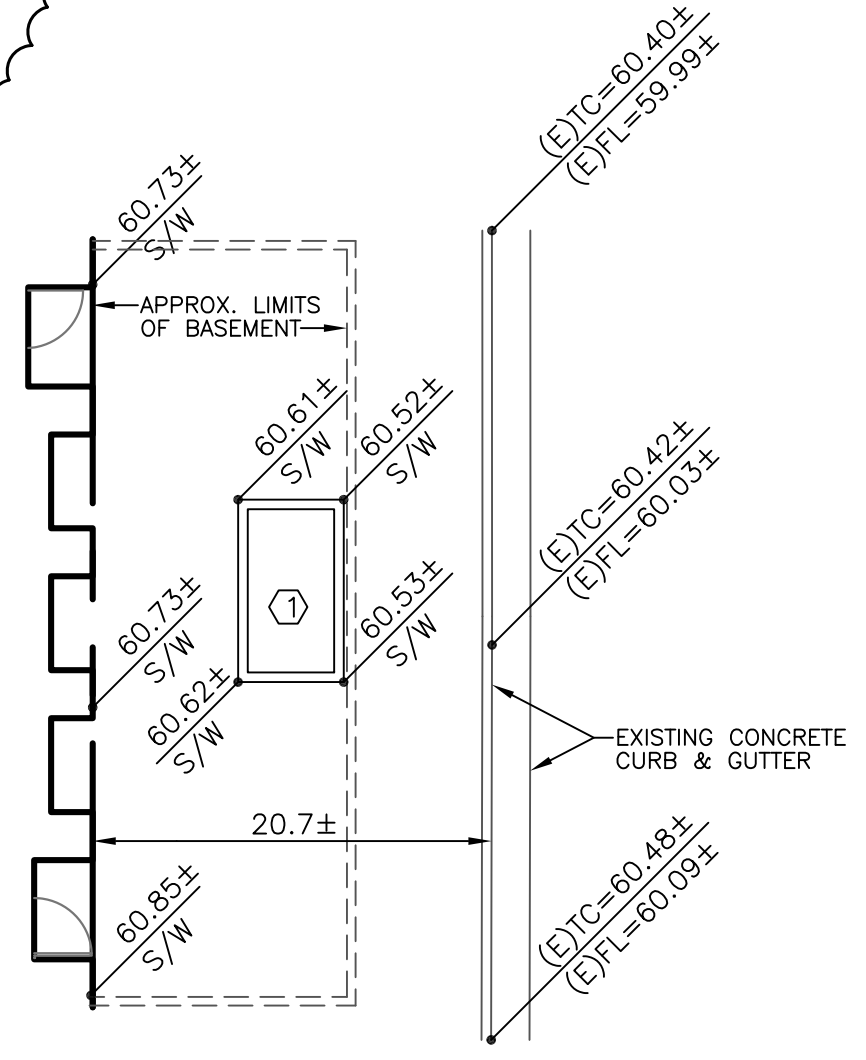
- T = TREE (APPROX. DIA. @ BREAST HEIGHT)
- AD = AREA DRAIN
- AP = ANGLE POINT
- BC = BUILDING CORNER
- BFP = BACK FLOW PREVENTER
- BL = BUILDING LINE
- BOL = BOLLARD
- BW = BOTTOM OF WALL
- C = TOP OF CURB
- CB = CATCH BASIN
- CL = CENTER LINE
- COL = COLUMN
- CONC = CONCRETE
- DI = DRAIN INLET
- DL = DRIVEWAY
- DW = DRIVEWAY
- E = EDGE OF
- EB = ELECTRIC BOX
- EP = EDGE OF PAVEMENT
- F = FENCE
- FDC = FIRE DEPARTMENT CONNECTION
- FF = FINISH FLOOR
- FH = FIRE HYDRANT
- FL = FLOW LINE
- C = GAS LINE
- GB = GRADE BREAK
- GL = GUTTER LIP
- GM = GAS METER
- GP = GATE POST
- GR = GROUND ELEVATION
- GUY = GUY WIRE
- GV = GAS VALVE
- HB = HOSE BIB
- HCR = HANDICAP RAMP
- HW = INVERT
- JP = JOINT POLE
- JP/C = JOINT POLE W/CONDUIT
- MH = MAN HOLE
- P = PAVEMENT
- PP = POWER POLE
- PBB = PACIFIC BELL BOX
- PGE = PACIFIC GAS AND ELECTRIC
- PLNTR = PLANTER
- POC = POINT ON CURVE
- RET = RETURN
- RMP = RAMP
- R/W = RIGHT OF WAY
- S = SIGN
- SD- = STORM DRAIN LINE
- SDMH = STORM DRAIN MANHOLE
- SL = STREET LIGHT
- SLB = STREET LIGHT BOX
- SS- = SANITARY SEWER LINE
- SSMH = SANITARY SEWER MANHOLE
- SSCO = SANITARY SEWER CLEAN OUT
- STR = STAIRS
- T = TOP OF SLOPE
- t = TOE OF SLOPE
- TEL- = UNDERGROUND TELEPHONE LINE
- T/E- = OVERHEAD TELEPHONE & ELECTRIC
- TOC = TOP OF CONCRETE
- TW = TOP OF WALL
- UB = UTILITY BOX
- VD = V-DITCH
- VG = VALLEY GUTTER
- W = BACK OF WALK
- WL- = WALK
- WM = WATER METER
- WV = WATER VALVE

ASSESSOR'S BLOCK 3636
MISSION BLOCK NO. 36

PROJECT CIVIL WORK LEGEND

- ① PROPOSED 4'-6" x 8'-6" x 7'-6" (5'-6" x 9'-6" O.D.) PG&E UCD SUBSURFACE TRANSFORMER VAULT LOCATION.
- ② CITY OF SAN FRANCISCO (CDD) TO INSTALL TAP, 2" LATERAL & 1" WATER METER BEHIND THE FACE OF CURB. CONTRACTOR TO INSTALL 2" WATER LINE FROM WATER METER TO THE BUILDING.
- ③ CITY OF SAN FRANCISCO (CDD) TO INSTALL 4" FIRE SERVICE STANDARD TAP, GATE VALVE, LATERAL & AWWA C110 FLANGE APPROXIMATELY 12" FROM FACE OF CURB AND 3 FEET, MINIMUM FROM EXISTING GAS SERVICE LATERAL. CONTRACTOR TO INTALL 4" FIRE LINE FROM THE FLANGE TO THE BUILDING. NOTE: PIER APS W2.6, A BACK TAP WILL BE REQUIRED IF IF THE GATE VALVE CAN NOT BE INSTALLED WITH A MINIMUM OF 6" CLEAR FROM THE EXISTING CONCRETE GUTTER LINE.
- ④ EXISTING ELEVATOR VAULT COVER TO BE REMOVED. INSTALL CONCRETE SIDEWALK PER CITY OF SAN FRANCISCO STANDARDS.
- ⑤ EXISTING STANDARD CONCRETE CURB & GUTTER.
- ⑥ PROPOSED BIKE RACK. NOTE: BIKE RACK TO BE INSTALLED A MINIMUM OF 2 FEET FROM EDGE OF NEW WATER METER BOX.
- ⑦ EXISTING GAS METER LOCATION IN BASEMENT
- ⑧ NEW CONCRETE PAVEMENT
- ⑨ EXISTING SIDEWALK ART

TRANSFORMER ELEVATIONS
1"=10'



GENERAL NOTES

1. THE LOCATIONS OF UNDERGROUND UTILITIES AS SHOWN HEREON ARE BASED ON ABOVE GROUND STRUCTURES AND PAINT MARKS PROVIDED BY UNDERGROUND UTILITY LOCATORS. LOCATIONS OF UNDERGROUND UTILITIES/STRUCTURES MAY VARY FROM LOCATIONS SHOWN HEREON. ADDITIONAL BURIED UTILITIES/STRUCTURES MAY BE ENCOUNTERED. NO EXCAVATIONS WERE MADE DURING THIS SURVEY TO LOCATE BURIED UTILITIES/STRUCTURES.
2. CONTRACTORS AND OTHERS PERFORMING WORK SHALL VERIFY THE EXACT LOCATION AND DEPTH OF ALL UNDERGROUND UTILITIES.
3. BASIS OF BEARINGS: THE BEARING S0°00'00"W BETWEEN TWO FOUND MONUMENTS ON MISSION STREET.
4. BENCHMARK: AS NOTED
5. BOUNDARY LINES ARE APPROXIMATE ONLY, AND ARE BASED ON AVAILABLE RECORD INFORMATION.



Matthew L. Rei
Exp. 12/31/21

sidewalk Art by Joe Mangrum
EXISTING CONDITION



sidewalk Art by Joe Mangrum
PROPOSED CONFIGURATION





UNIVERSITY OF GET INVOLVED.
USFCA.EDU

UNIVERSITY OF SAN FRANCISCO
CHANGE THE WORLD FROM HERE.
USFCA.EDU

WELLS FARGO

WELLS FARGO

22nd St

D

B

Handwritten graffiti on the sidewalk, including a circular logo and some illegible text.

B

B

Handwritten graffiti on the sidewalk, including a large red 'X' and other markings.







4/31 ↑ ↑ ESTO









Sigue
Corp.
MONEY TRANSFER SERVICES

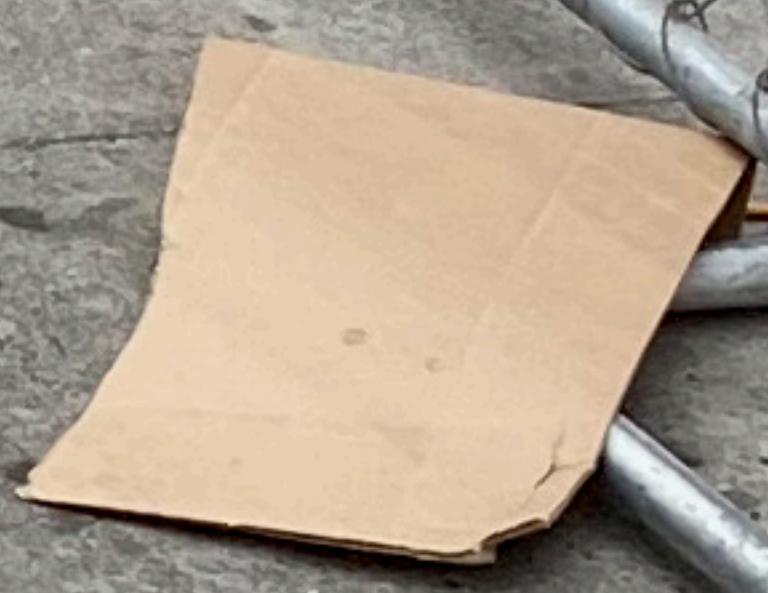
total care

Western Dental
dentists

340 JUDGES AND COUNTING.
UNIVERSITY OF SAN FRANCISCO
School of Law

BUTTERFLY JUNGLE

NOTICE
STOPPING
10/15/21 - 10/15/21
10/15/21 - 10/15/21
10/15/21 - 10/15/21



U
U