

PROJECT TEAM:

Lead Artist: Mildred Howard

Project Sponsor: Kristin Gonsar, 706 Mission Co. LLC

Project Manager: Nick Dong

Project Architect: PROTOinc

Landscape Architect: Cliff Lowe Associates

Civil Engineer: LANGAN

Lighting Design: Weller Design Architectural Lighting

Electrical Engineering: CB Engineering

Structural Engineering: Strandberg Engineering

Project Poet: Katherine Smith

Green Wall Horticulturist: Habitat Horticulture



Artist: Mildred Howard

Stevenson Street Artwork & Streetscape

Schematic Design: Civic Design Review Presentation
February 12, 2018



Project Area: SF Arts Hub

Artist: Mildred Howard

Stevenson Street Artwork & Streetscape

Schematic Design: Civic Design Review Presentation

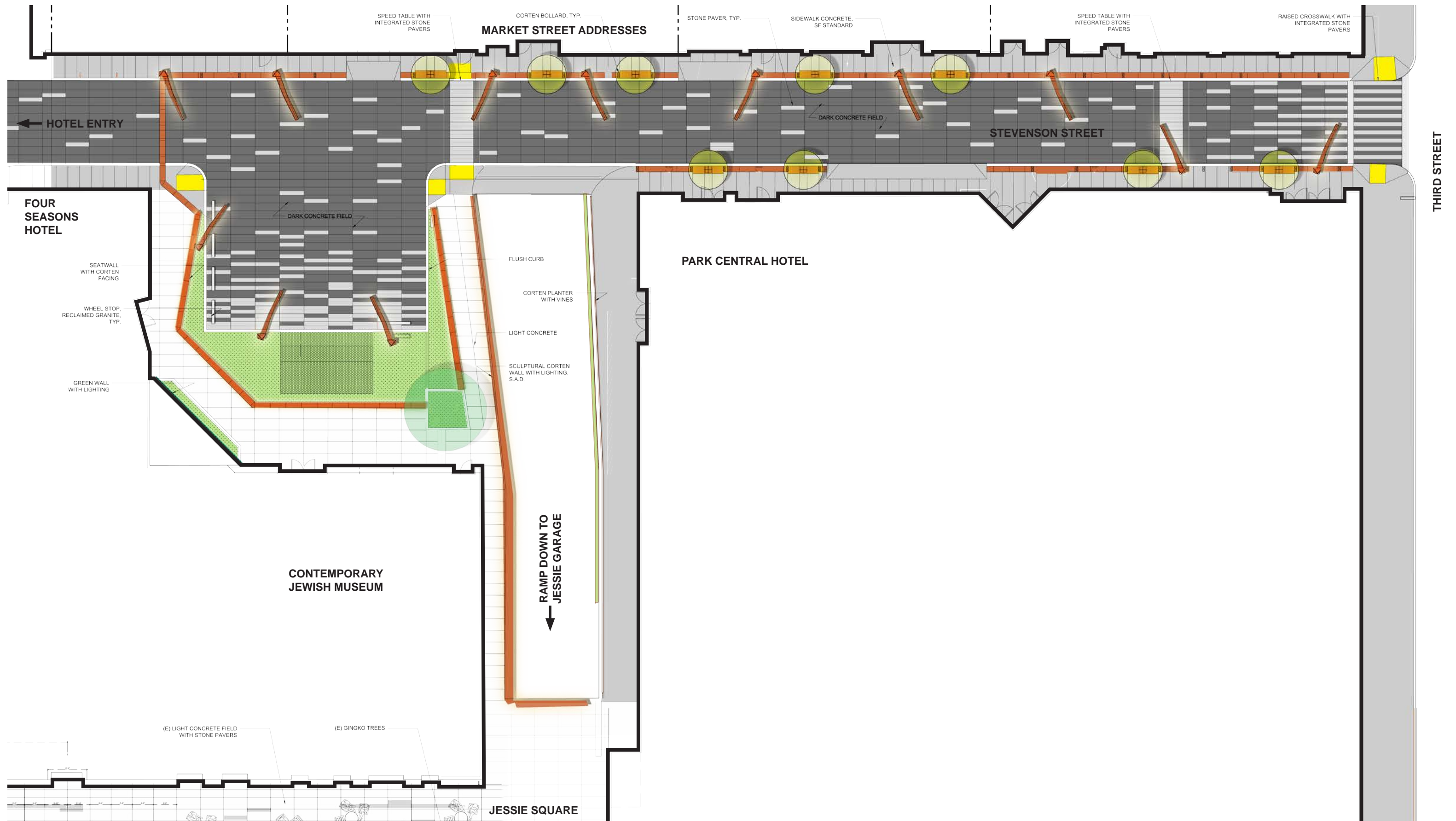
February 12, 2018



Existing Site Photos

Artist: Mildred Howard

Stevenson Street Artwork & Streetscape
 Schematic Design: Civic Design Review Presentation
 February 12, 2018



Stevenson Street: Proposed Site Plan

Artist: Mildred Howard

Stevenson Street Artwork & Streetscape
Schematic Design: Civic Design Review Presentation
February 12, 2018



Stevenson Street: Initial Concept Rendering

Artist: Mildred Howard

Stevenson Street Artwork & Streetscape
Schematic Design: Civic Design Review Presentation
February 12, 2018



**Stevenson Sidewalk: Bollards, Inset Poetry,
Street Trees & Artwork Streetlights**

Artist: Mildred Howard

Stevenson Street Artwork & Streetscape
Schematic Design: Civic Design Review Presentation
February 12, 2018



**Stevenson Sidewalk: Bollards, Inset Poetry,
Street Trees & Artwork Streetlights**

Artist: Mildred Howard

Stevenson Street Artwork & Streetscape
Schematic Design: Civic Design Review Presentation
February 12, 2018

RAINY NIGHT ON STEVENSON STREET

By Katherine Smith

On Stevenson Street
on a January night
where docks once reached,

I hollow the small of my arched back.
I am San Francisco
on a rainy corner

of the financial district.
Beneath dark sky,
bright footsteps.

I drip light
from cornices
of olive branches.

I am rain
falling from
cast iron pilasters.

I am mother-of-pearl,
short street
rippling like shot silk.

I am memory
of shipbuilders
and saloonkeepers.

I am blue,
indigo-dyed cotton
filling the valley,

the stitching
of seamstresses.
I am needlework

of migration,
street-lit relic
of prayer,
a rumor of gold
spilled on the sidewalk.
I am the ghost

waving good bye
to children holding hands
walking out of the museum

shouting above the rain.
I am lovers
soaked by downpour.

I am workers,
hurrying home
each one a bronze core,

a penny, the copper face
of the shore cast
across bay waters.



Artist: Mildred Howard

Stevenson Street Artwork & Streetscape

Schematic Design: Civic Design Review Presentation
February 12, 2018

Stevenson Sidewalk: Inset Poetry



**Stevenson Plaza: Bench with Inset
Poetry and Landscaped Border**

Artist: Mildred Howard

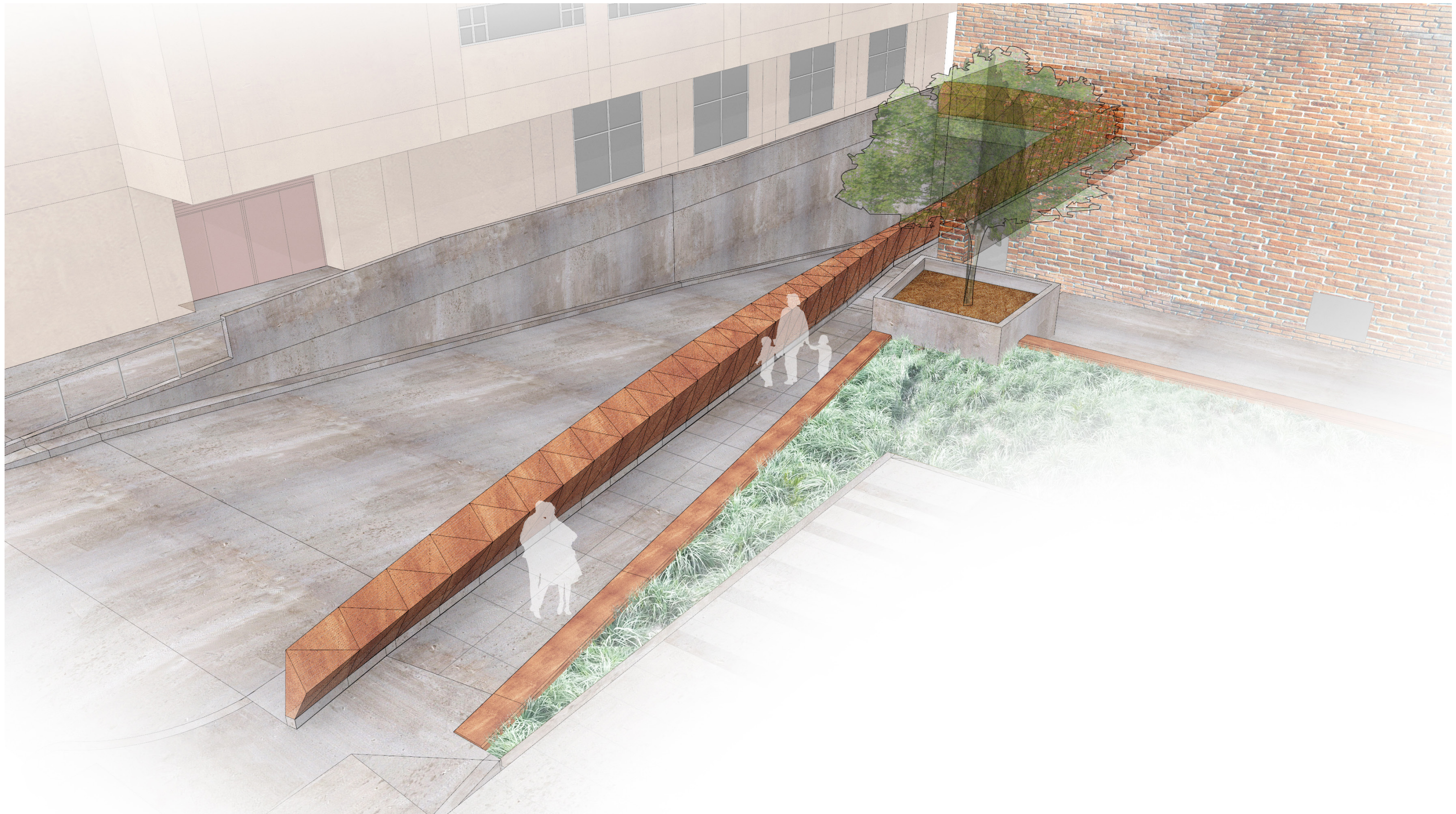
Stevenson Street Artwork & Streetscape
Schematic Design: Civic Design Review Presentation
February 12, 2018



**Stevenson Plaza: Bench with Inset
Poetry and Green Wall**

Artist: Mildred Howard

Stevenson Street Artwork & Streetscape
Schematic Design: Civic Design Review Presentation
February 12, 2018



**Garage Ramp Decorative Guardrail
& Landscaped Border**

Artist: Mildred Howard

Stevenson Street Artwork & Streetscape
Schematic Design: Civic Design Review Presentation
February 12, 2018



Garage Ramp Decorative Guardrail

Artist: Mildred Howard

Stevenson Street Artwork & Streetscape
Schematic Design: Civic Design Review Presentation
February 12, 2018



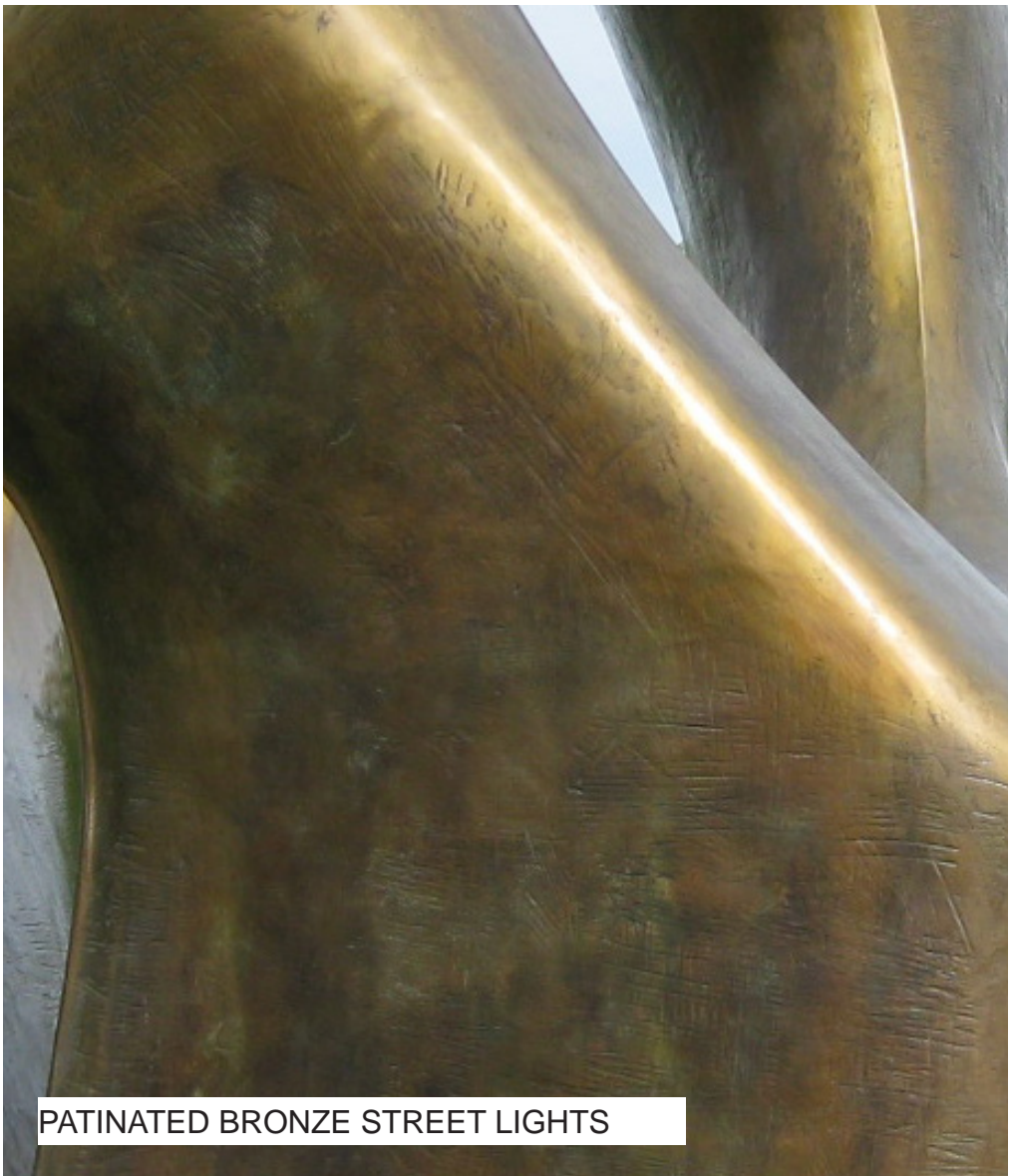
PLANTED "GREEN WALL"



WEATHERING STEEL TREE WELLS



COR_TEN POETRY BAND



PATINATED BRONZE STREET LIGHTS



SIDEWALK BOLLARDS



PERFORATED COR-TEN GUARDRAIL



STAINED CONCRETE BENCH

Artwork & Site Feature Materials

Artist: Mildred Howard

Stevenson Street Artwork & Streetscape
Schematic Design: Civic Design Review Presentation
February 12, 2018

PAVING + HARDSCAPE



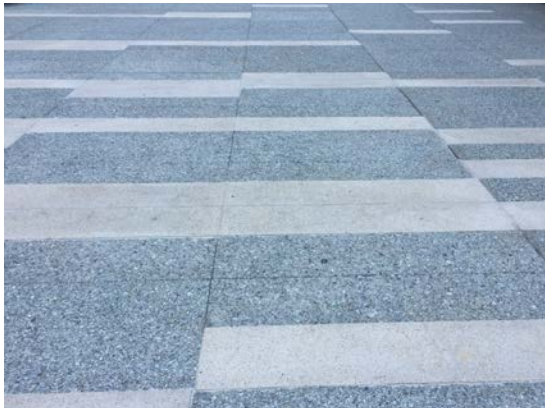
ROAD PAVING
COLORED CONCRETE
WITH SPARKLE MICA



STONE INSET PAVERS
SIERRA WHITE GRANITE



FIRE TRUCK TURNAROUND
GRASS PAVE SYSTEM



SIDEWALK PAVING @ PLAZA
LIGHT CONCRETE
TO MATCH JESSIE SQUARE



WHEEL STOP
RECLAIMED GRANITE CURB



WALLS + FURNISHINGS
CORTEN WEATHERING STEEL

PLANT PALETTE



GINGKO BILOBA
'PRINCETON SENTRY'



ALYOGYNE HUEGELII 'SANTA CRUZ'
BLUE HIBISCUS



LOMANDRA 'LIME TUFF'
DWARF MAT RUSH



BLECHNUM SPICANT
DEER FERN



LIBERTIA PEREGRINANS
ORANGE LIBERTIA



CAREX FLACA 'BLUE ZINGER'
BLUE SEDGE