

An aerial photograph of Treasure Island, California, showing a grid of streets and buildings. A red dot is placed on the island to indicate the location of the bus operator restroom. The island is surrounded by water, and a bridge is visible on the right side. The text is overlaid on the map.

BUS OPERATOR RESTROOM

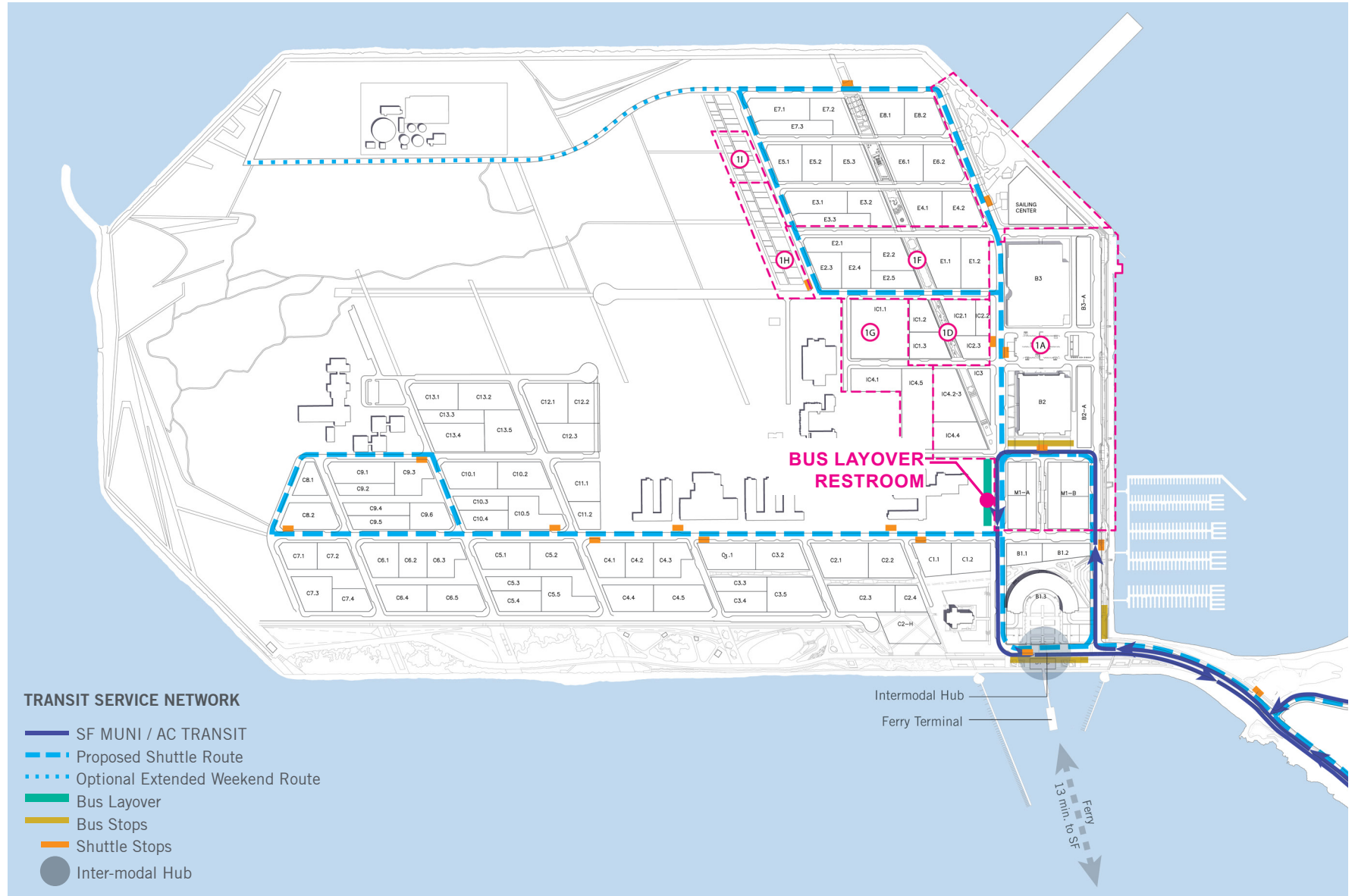
TREASURE ISLAND

5/17/2021



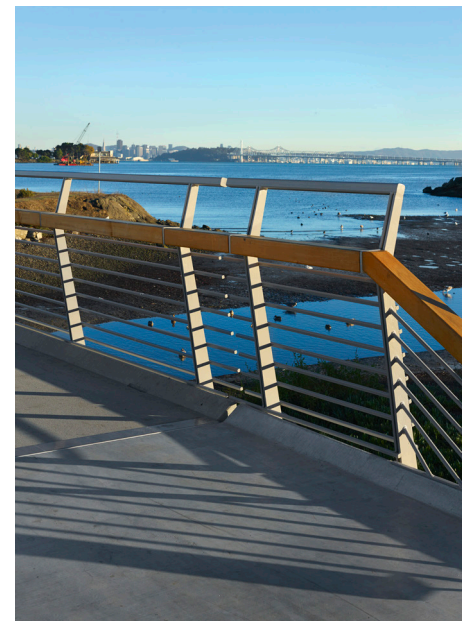
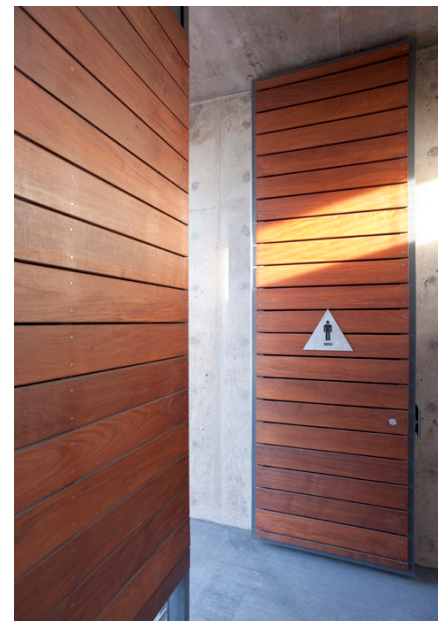
PUBLIC TRANSIT NETWORK

TREASURE ISLAND BUS OPERATOR RESTROOM





WARE
architecture
engineering



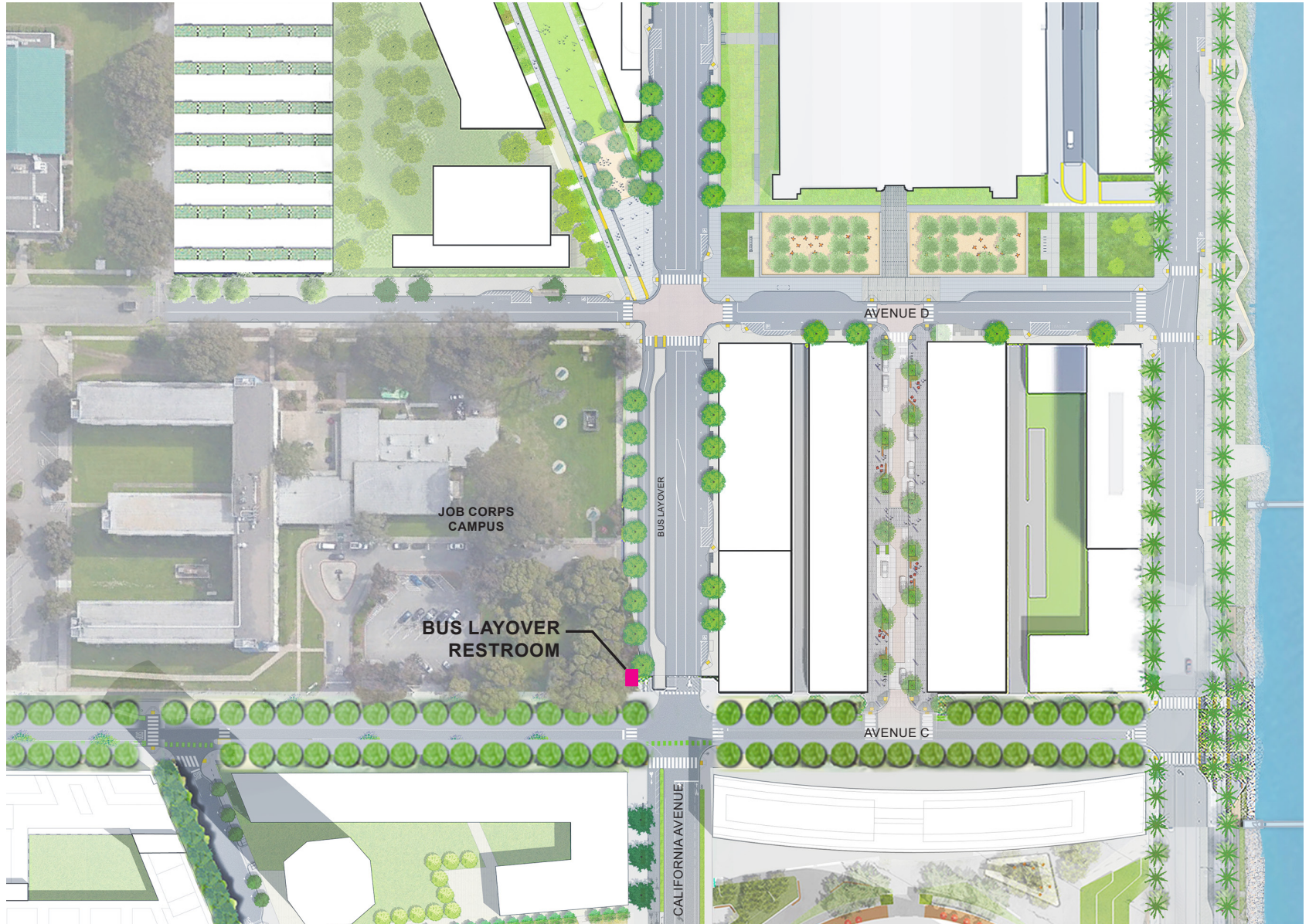
EXISTING LOCATION

TREASURE ISLAND BUS OPERATOR RESTROOM



CALIFORNIA AVENUE

TREASURE ISLAND BUS OPERATOR RESTROOM



SITE PLAN

TREASURE ISLAND BUS OPERATOR RESTROOM



CALIFORNIA AVE.

VIEW EAST

TREASURE ISLAND BUS OPERATOR RESTROOM



VIEW NORTHEAST

TREASURE ISLAND BUS OPERATOR RESTROOM



SITING CONTEXT

TREASURE ISLAND BUS OPERATOR RESTROOM



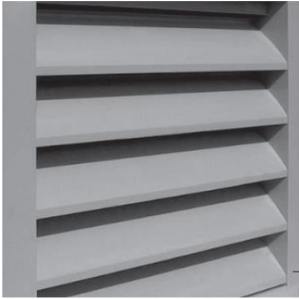
BUS OPERATOR RESTROOM

TREASURE ISLAND BUS OPERATOR RESTROOM



MATERIAL PRECEDENTS

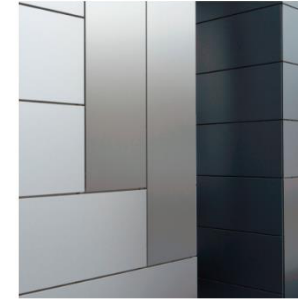
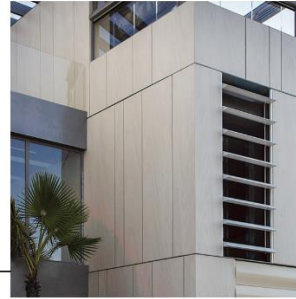
TREASURE ISLAND BUS OPERATOR RESTROOM



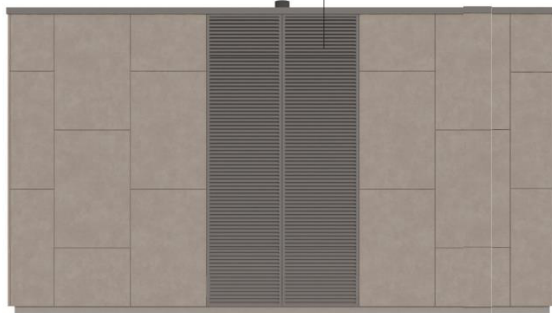
Metal Louvers



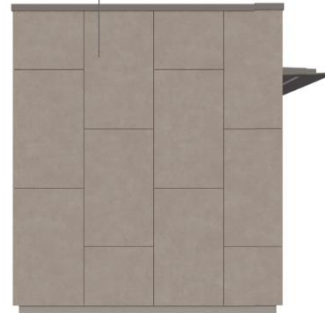
Porcelain Wall Tile



Metal Composite Material Panel



Bus Operator Restroom
Rear facade



Bus Operator Restroom
Side facade



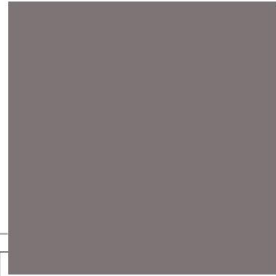
Bus Operator Restroom
Front facade

MATERIAL COLOR AND FINISH

TREASURE ISLAND BUS OPERATOR RESTROOM



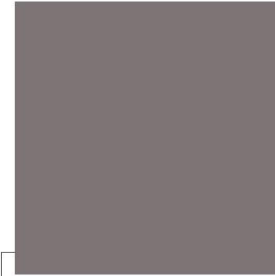
Concrete Curb
2 lbs/CY Lamp Black Added



Metal Louvers & Parapet Cap
Pearl Light Grey - RAL 9022



Porcelain Wall Tile
Porcelanosa - Baltimore Natural



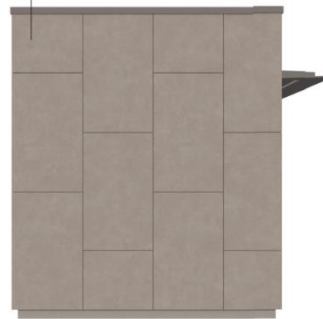
Painted Metal Door
Pearl Light Grey - RAL 9022



Metal Composite Material Panel
Pearl Light Grey - RAL 9022



Bus Operator Restroom
Rear facade



Bus Operator Restroom
Side facade



Bus Operator Restroom
Front facade



**TREASURE ISLAND
STAGE 2-3**

LOCATION:
TREASURE ISLAND, CA

OWNERS:
TREASURE ISLAND
DEVELOPMENT AUTHORITY
CITY OF SAN FRANCISCO
COUNTY OF SAN FRANCISCO,
CALIFORNIA 94130

KEYED NOTES:

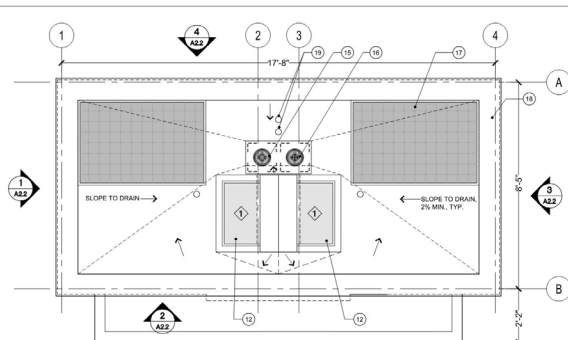
- 1 Jumbo size single-roll toilet tissue dispenser.
- 2 Electric hand dryer.
- 3 Wash sink w/ temperature mixer faucet.
- 4 Wall mirror.
- 5 Hand soap dispenser.
- 6 Floor drain.
- 7 Water hose bib.
- 8 Recessed shelf & coat hanger.
- 9 Built-in garbage bin.
- 10 Key entry or electronic card reader entry.
- 11 Wall-mounted exhaust fan (70 cfm).
- 12 Fixed skylight (insulated).
- 13 Stainless Steel ventilation grille.
- 14 Surface-mounted seat cover dispenser.
- 15 Roof drain. See detail 16A.3.
- 16 Overflow drain.
- 17 Photocatalytic panel.
- 18 Metal parapet cap.
- 19 Plumbing vents.
- 20 Metal awning.

INTERIOR FINISHES LEGEND:

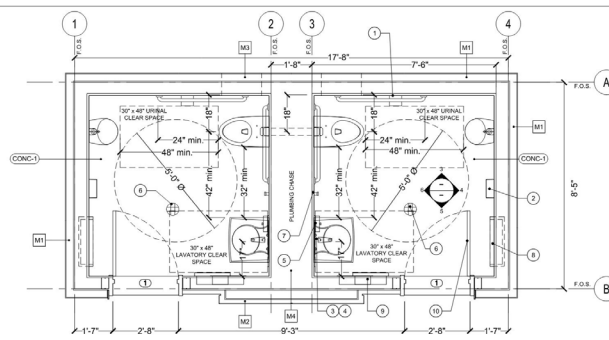
- Division 09 Finishes**
- (TL-1) Porcelain Wall Tile (12"x24")
 - (TL-2) Porcelain Accent Tile
 - (CEM-1) Painted Durock Cement Board, Water Durable
 - (CONC-1) Sealed Concrete Floor

WALL LEGEND:

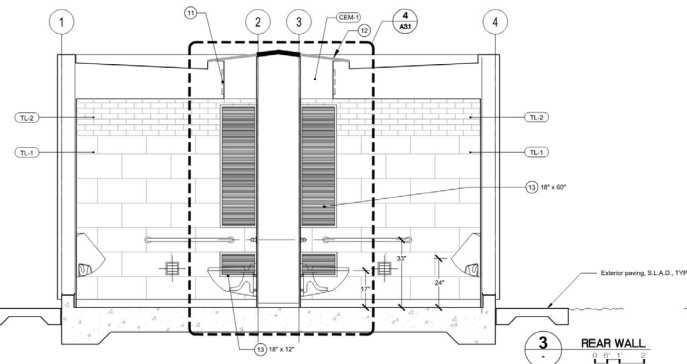
- (M1) 6" CFM stud wall with ventilated raincoat exterior, see detail 13A.3.
- (M2) 6" CFM stud wall with metal panel exterior, see details 2, 4, 13A.3.
- (M3) Metal Louvers, see detail 3A.3.
- (M4) CFM plumbing chase wall.



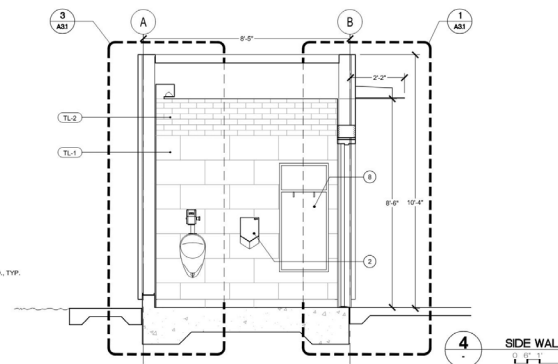
1 BUS OPERATOR RESTROOM ROOF PLAN



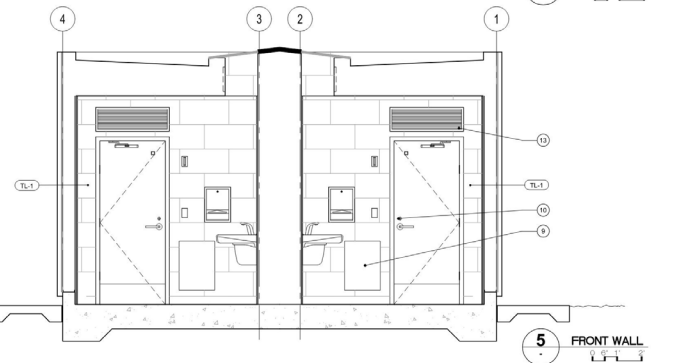
2 BUS OPERATOR RESTROOM PLAN



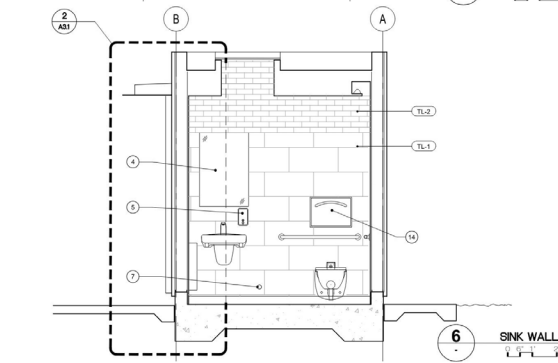
3 REAR WALL



4 SIDE WALL



5 FRONT WALL



6 SINK WALL

NO.	ISSUES / REVISIONS	DATE
	100% DD COORDINATION SET	5/16/2019
	REVISION SET	9/24/2020
	COORDINATION SET	4/28/2021
	SFAC CD SET	5/7/2021

**BUS
OPERATOR
RESTROOM**

Ref. North:



Drawn: CP
Checked: JOW
Date Started: 10.29.2018
Scale: AS SHOWN

**TREASURE ISLAND
STAGE 2-3**
Job No: 18-05
Sheet:
A2.1

THANK YOU!

