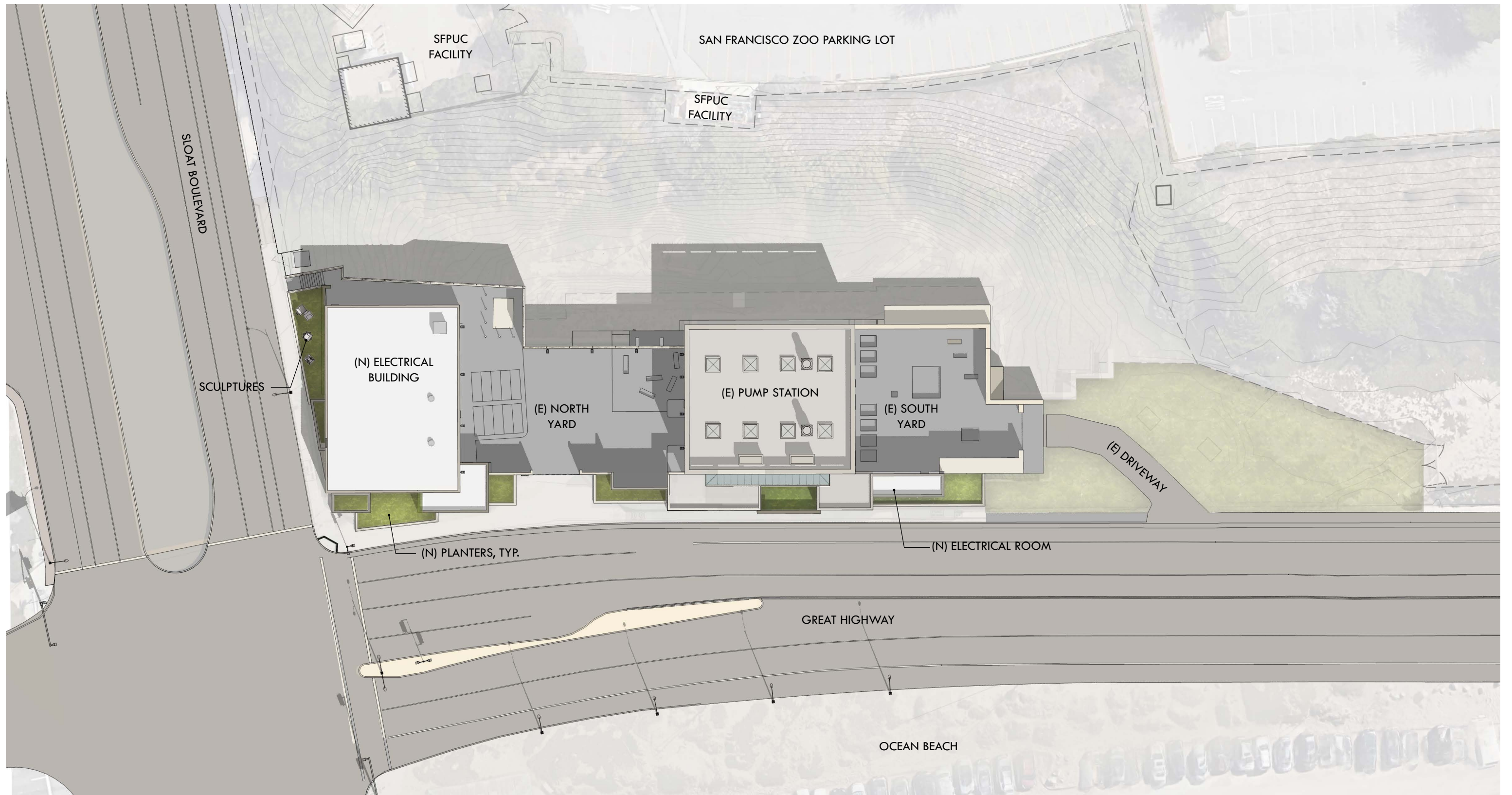


# WESTSIDE PUMP STATION RELIABILITY IMPROVEMENTS

CIVIC DESIGN REVIEW - PHASE 3 - JANUARY 22, 2018





# WEST PLANTING

## TALLER (ABOVE 2FT)



**NEW ZEALAND FLAX**  
*PHORMIUM 'MARGARET JONES'*  
INFREQUENT



**BLUE OAT GRASS**  
*HELICTOTRICHON SEMPERVIRENS*  
SUMMER

## MID (1 TO 2FT)



**BLUE CHALK STICKS**  
*SENECIO MANDRALISCAE*  
SUMMER



**SEA LAVENDER**  
*LIMONIUM CALIFORNICUM*  
LATE SUMMER-EARLY WINTER



**CORAL ALOE**  
*ALOE STRIATA*  
WINTER-SPRING

## LOW (BELOW 1FT)



**ANGELINA STONECROP**  
*SEDUM RUPESTRE 'ANGELINA'*  
SUMMER

# NORTH PLANTING

## TALLER (ABOVE 2FT)



**LION'S EAR**  
*LEONOTIS LEONURUS*  
SPRING-FALL



**BLUE OAT GRASS**  
*HELICTOTRICHON SEMPERVIRENS*  
SUMMER

## MID (1 TO 2FT)



**ROCK PURSLANE**  
*CALINDRINIA GRANDIFLORA*  
SUMMER

## LOW (BELOW 1FT)

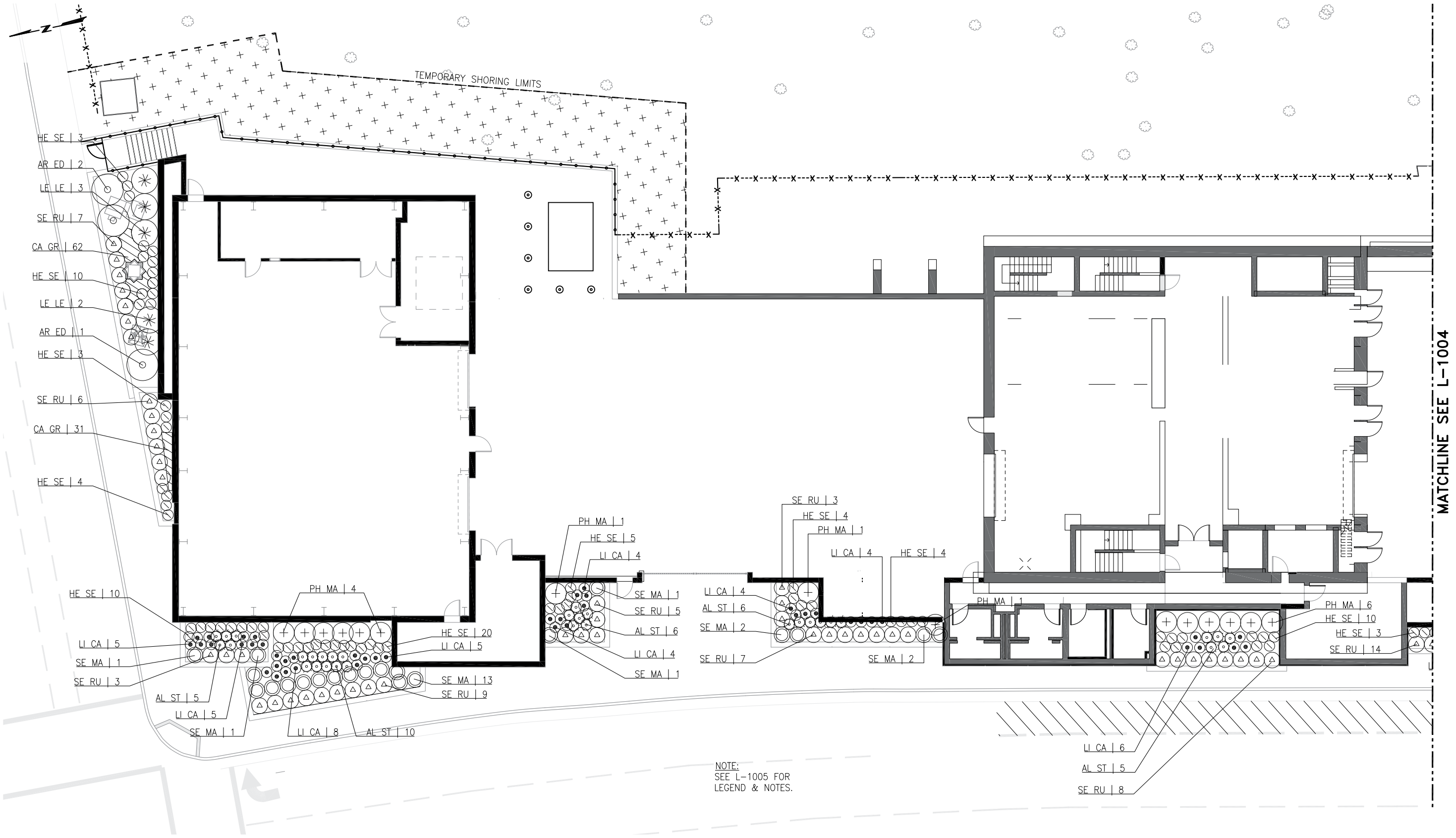


**ANGELINA STONECROP**  
*SEDUM RUPESTRE 'ANGELINA'*  
SUMMER

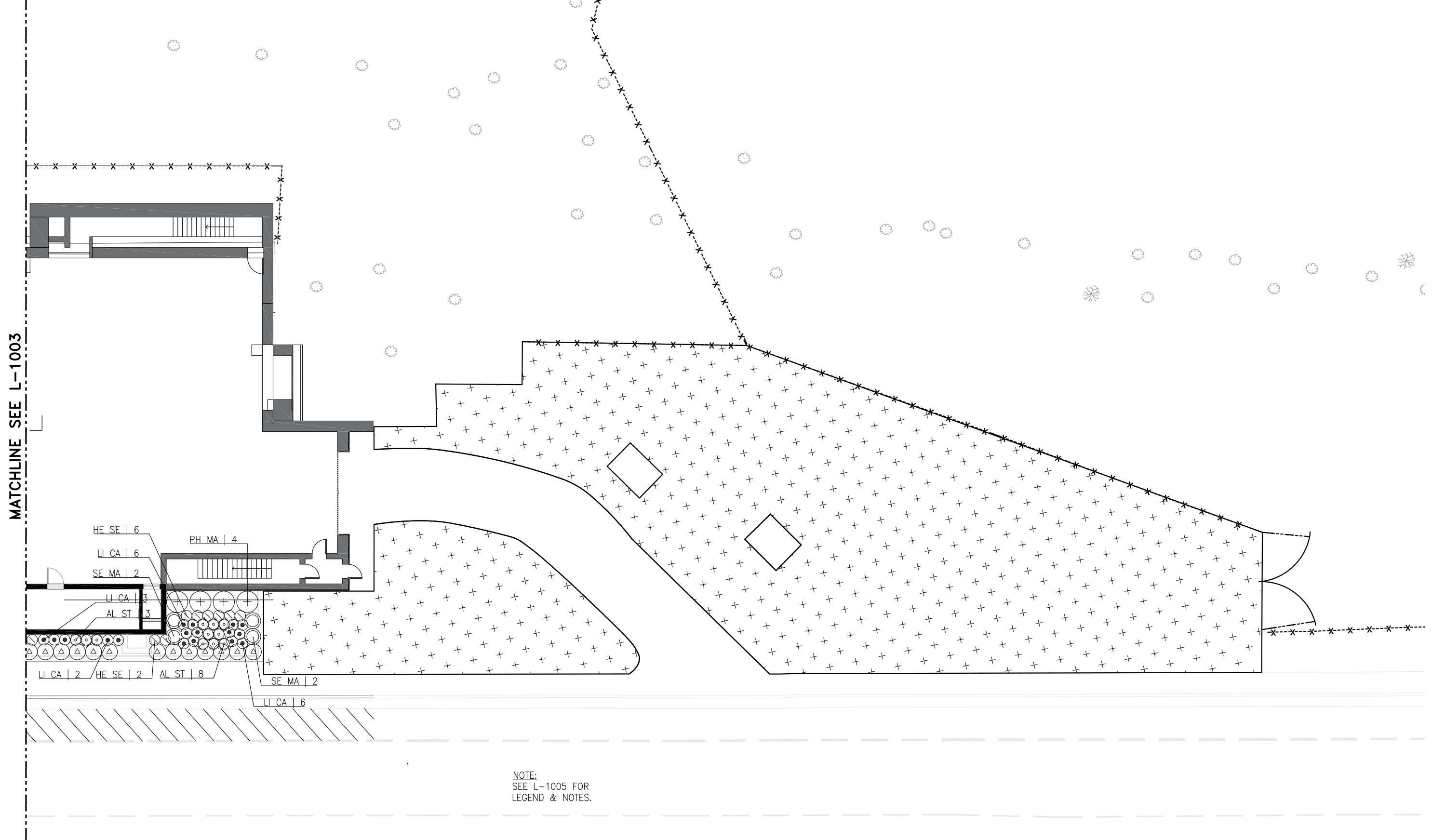


**LITTLE SUR MANZANITA**  
*ARCTOSTAPHYLOS EDMUNDSII*  
WINTER-SPRING

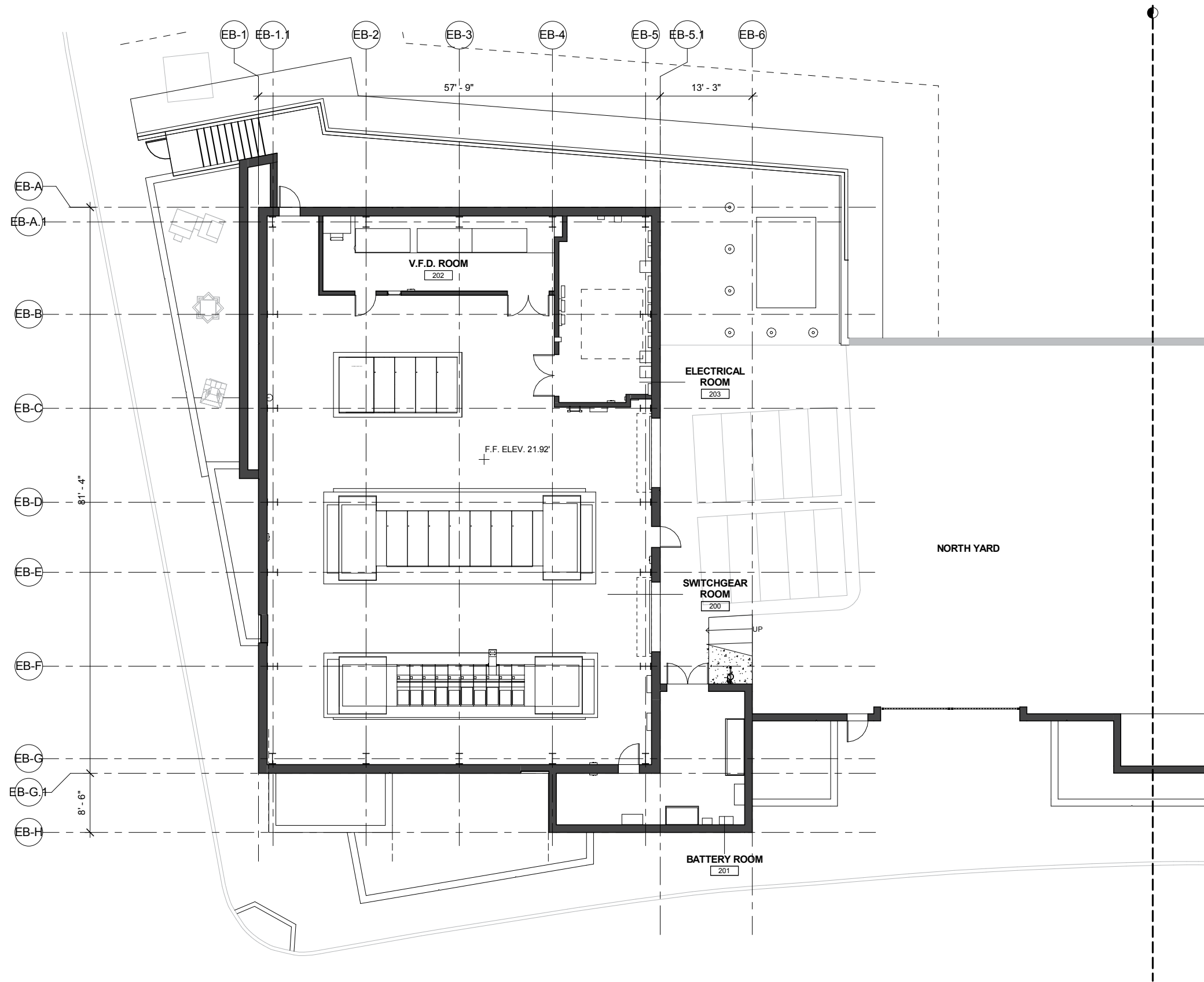
Planting Palette



Partial Planting Plan - North



Partial Planting Plan - South

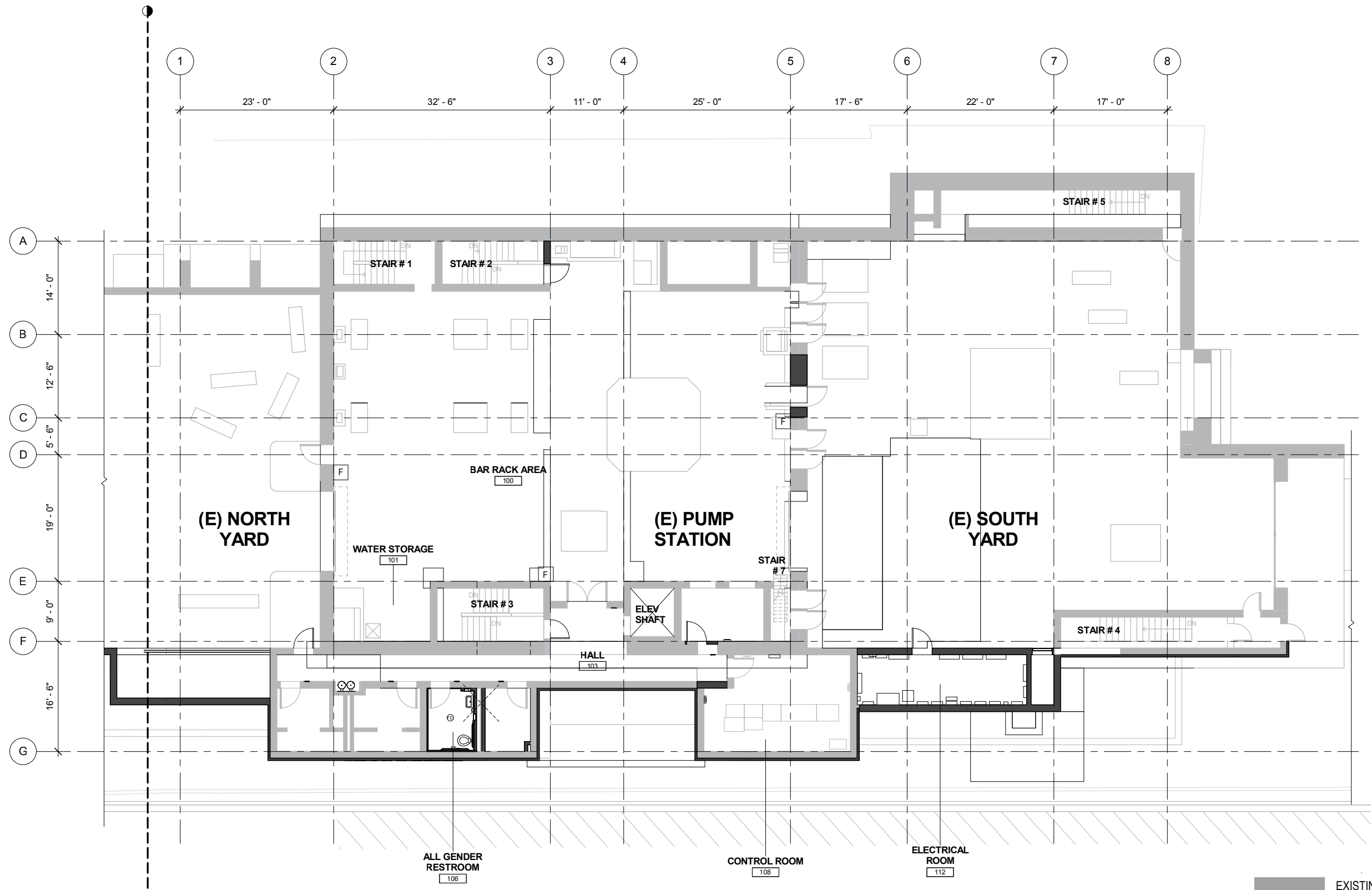


Electrical Building Floor Plan

Westside Pump Station Reliability Improvements

Civic Design Review - Phase 3 | 1.22.2018 | Page 6





EXISTING CONSTRUCTION  
 NEW CONSTRUCTION



Main Building Floor Plan



**Westside Pump Station Reliability Improvements**

Civic Design Review - Phase 3 | 1.22.2018 | Page 7





CDR Phase 2 - January 2017



CDR Phase 3 - January 2018

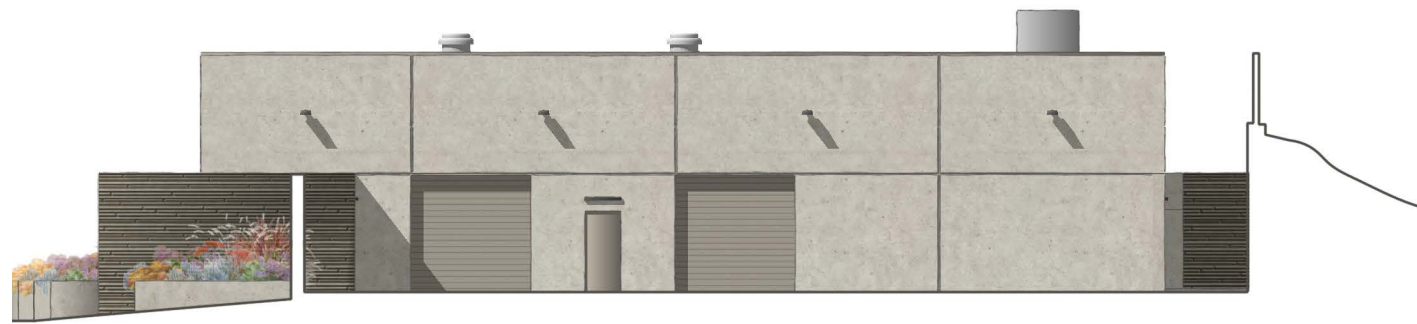




CDR Phase 2 - January 2017



CDR Phase 3 - January 2018



**SOUTH ELEVATION**

ROOF  
20'-2"

LEVEL 1  
0'-0"



**WEST ELEVATION**



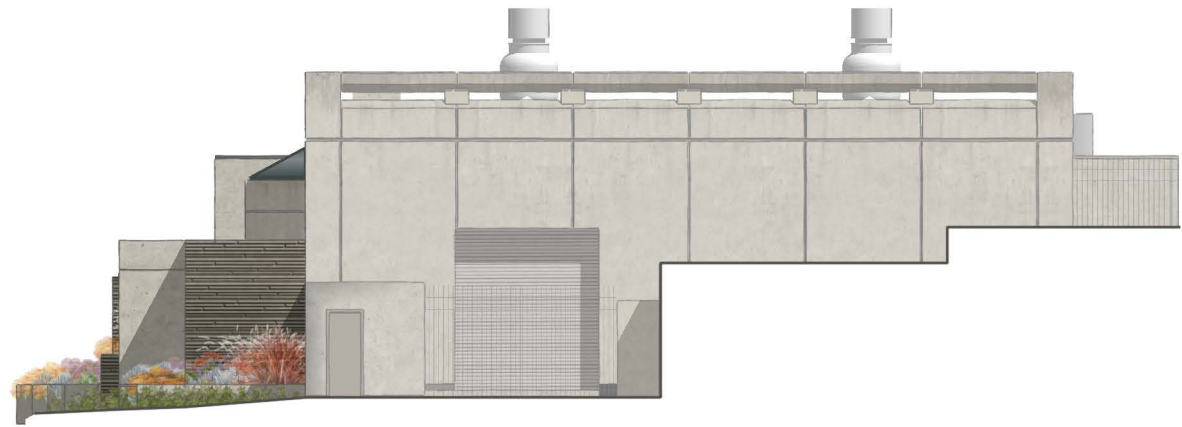
**EAST ELEVATION**



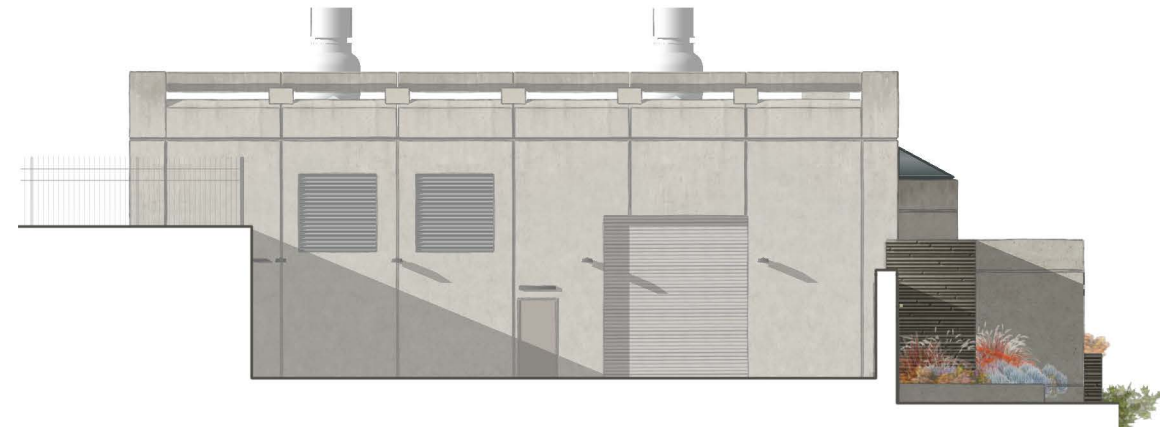
**NORTH ELEVATION**



Electrical Building Elevations



**SOUTH ELEVATION**



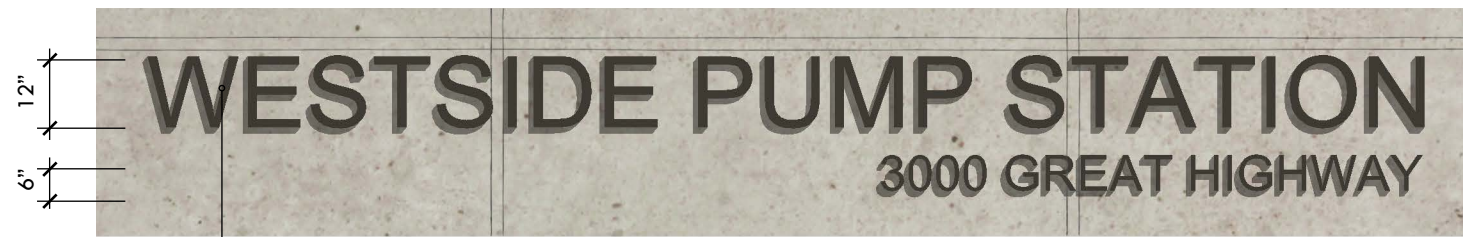
**NORTH ELEVATION**



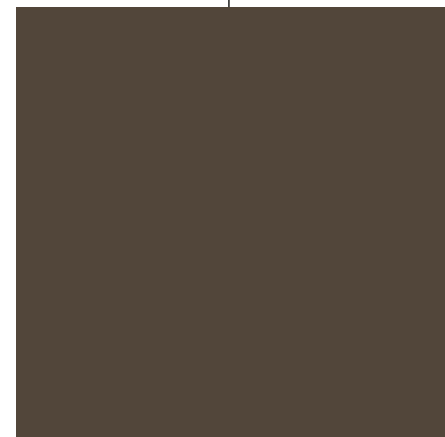
**WEST ELEVATION**



Main Building Elevations



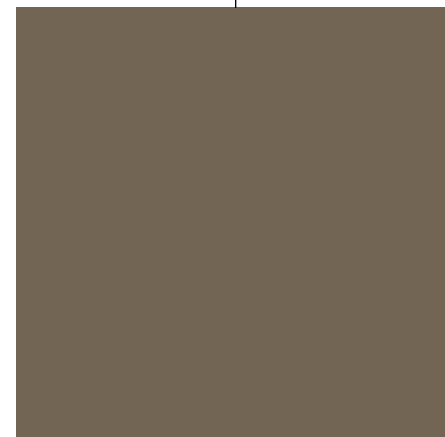
**DIMENSIONAL METAL SIGNAGE**  
PIN-MOUNTED



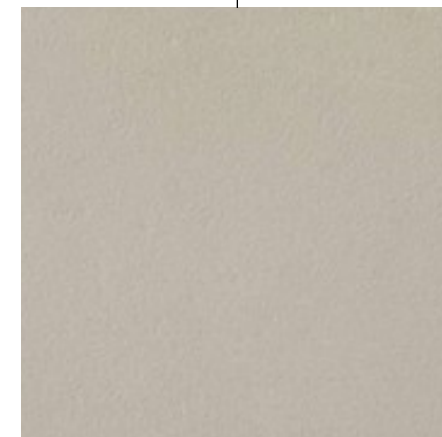
**METAL COLOR 3**  
TNEMEC WEATHERED BARK 84BR  
(SIGNAGE)



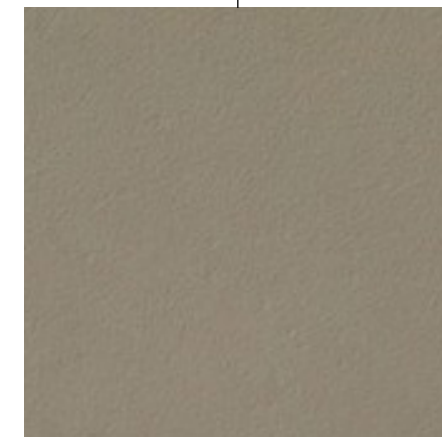
**METAL COLOR 2**  
TNEMEC DENALI 82BR  
(COPING)



**METAL COLOR 1**  
TNEMEC KINDLING 83BR  
(DOORS, GATES, LOUVERS, COPING)



**CONCRETE COLOR 1**  
DAVIS COLORS SANDSTONE 5237



**CONCRETE COLOR 2**  
DAVIS COLORS ADOBE 61078



**CONCRETE FORMLINER**  
US FORMLINER RECKLI 2/236 CALIFORNIA