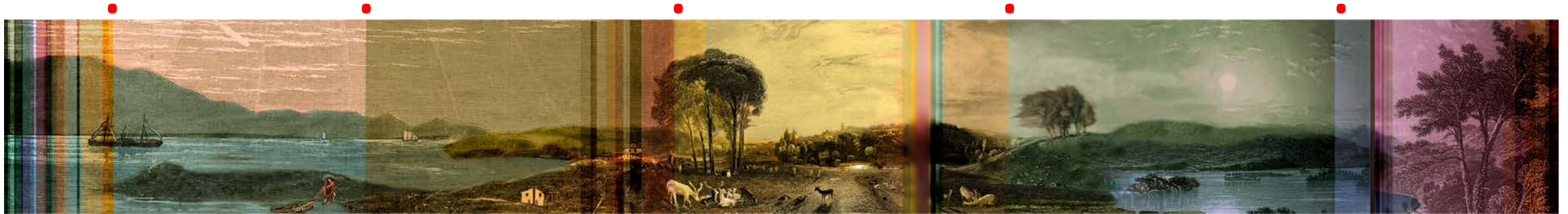


Long Arc of Day production

Kim Anno

Long Arc has had two small adjustments due to materials dimensions. This work will be processed with printing and painting by hand, where the glass is placed in the kiln with pigment after hand work.

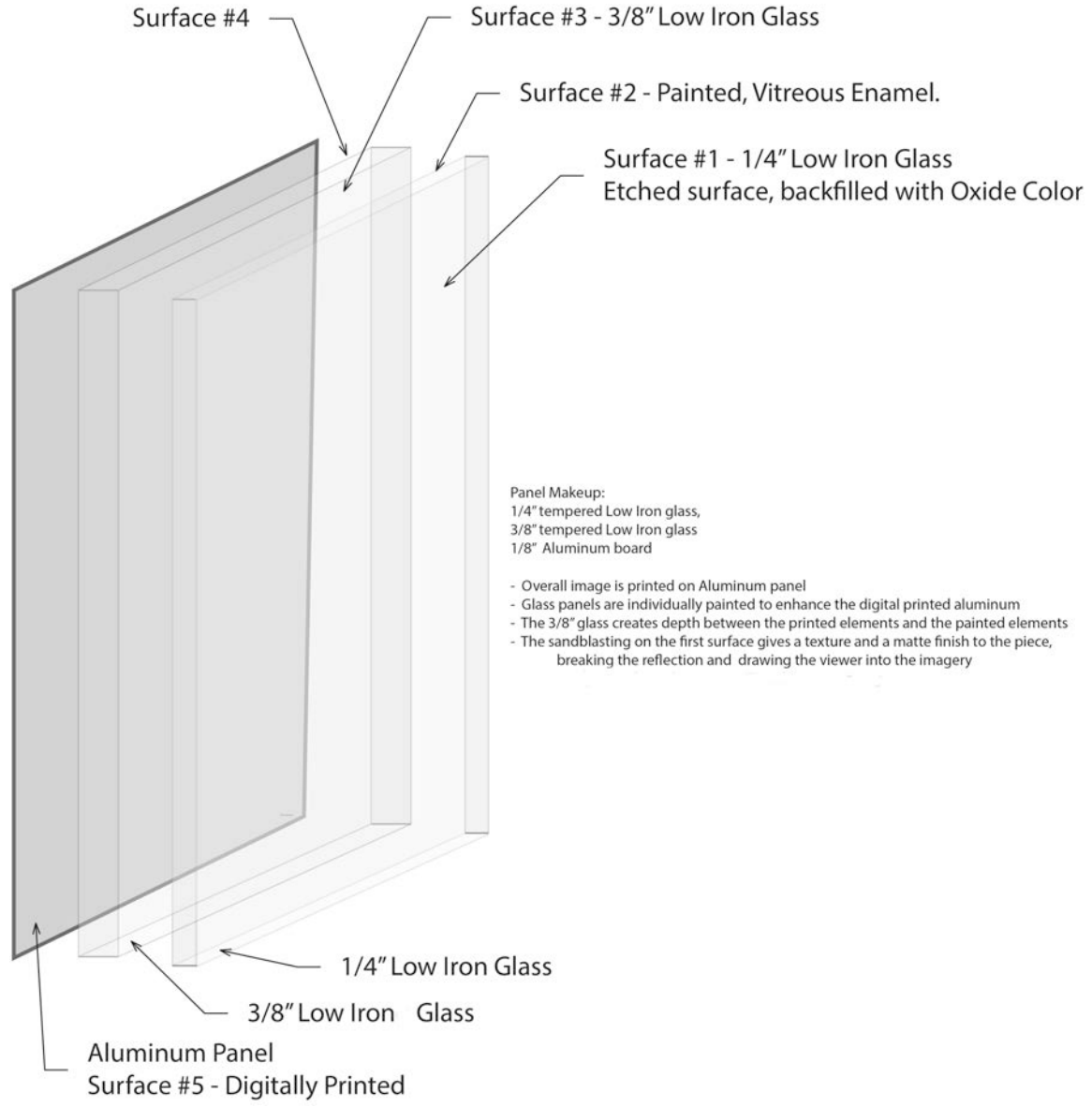


1. Panel 1 3'x5'
2. Panel 2 6.43'x 5'
3. Panel 3 8'x5'
4. Panel 4 8' x 5''
5. Panel 5 8.5x 5'
6. Panel 6 6.16x5'

COURTYARD 3 CONNECTOR

CONNECTOR - ART ELEVATION





Section 1,2 Long Arc of Day



Section 3 Long Arc of Day



Section 4 Long Arc of Day



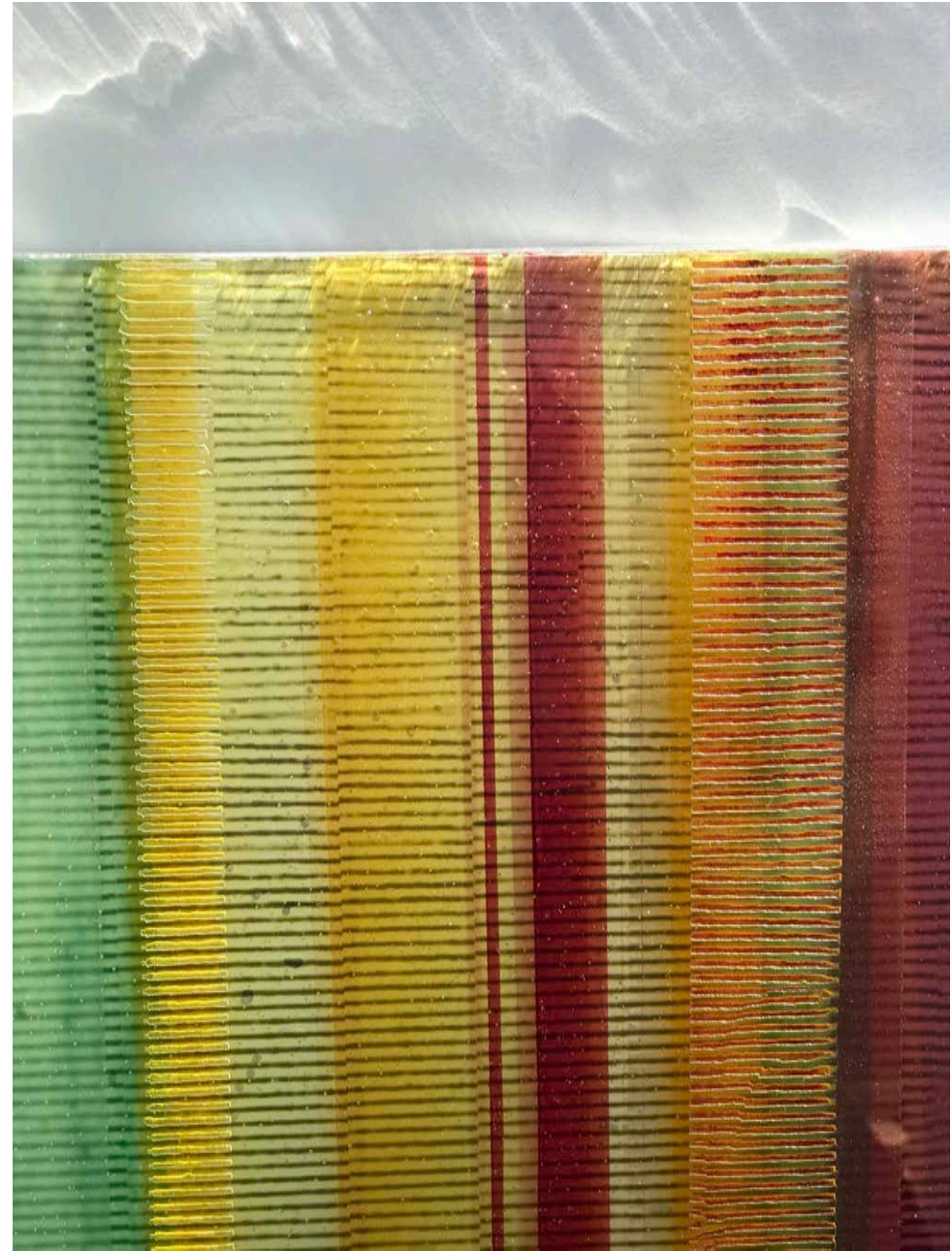
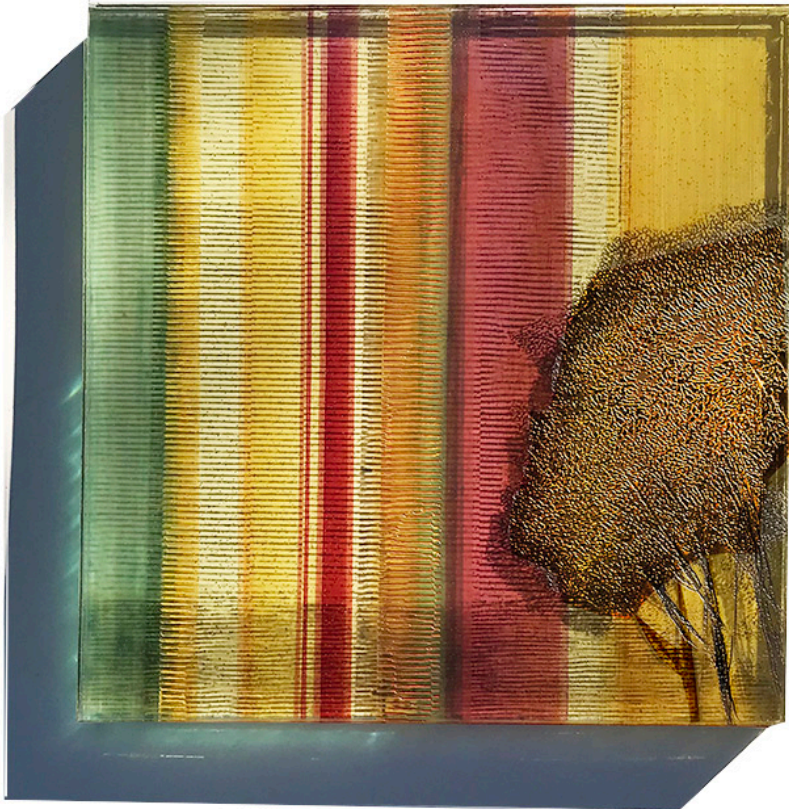
Section 5 Long Arc of Day



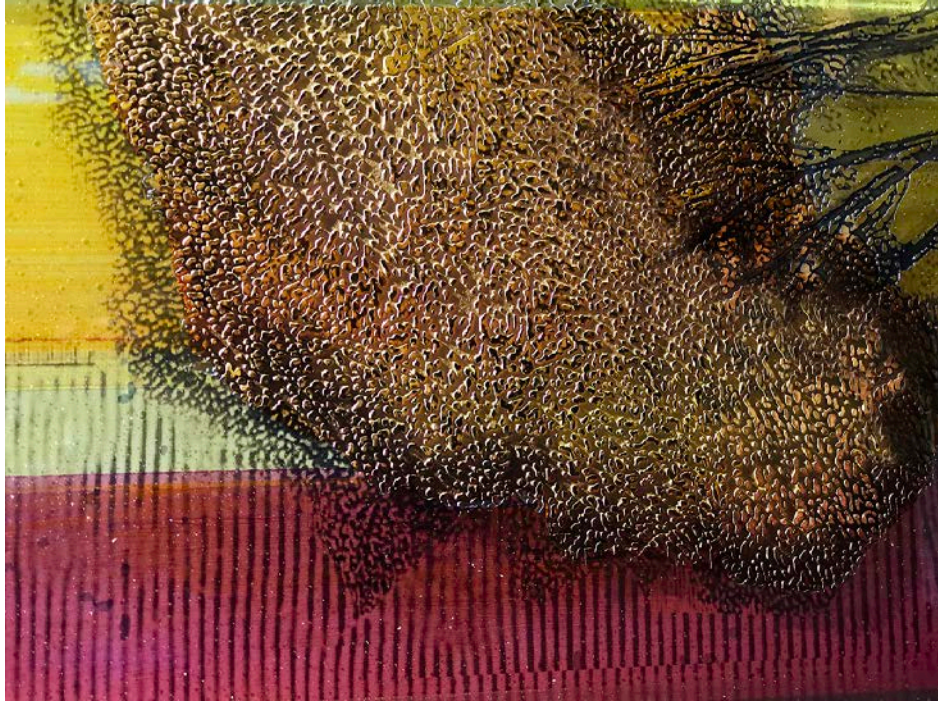
Section 6 Long Arc of Day



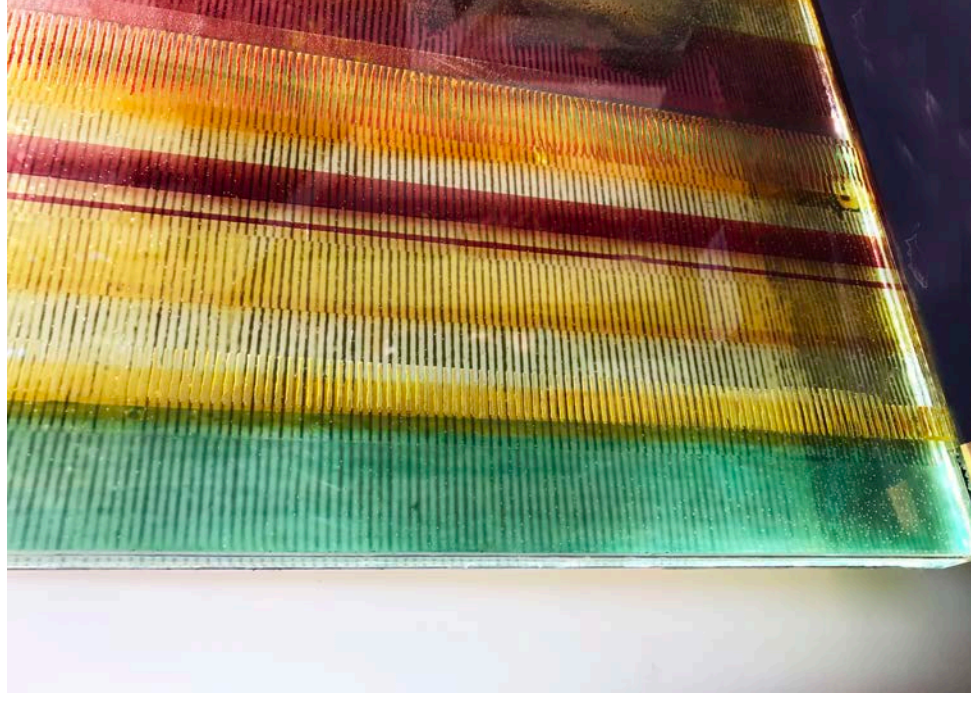
Please observe the sandblasting surface in the glass, and printing of the tiny lines from the back, this is I believe a positive layering of both the image lines and texture of the glass, which also serves as a deterrent to too much reflection from the adjacent windows in the corridor.



Below is an area that I want to avoid in the registration, which the printed image is outside of the sandblasting image, to remedy this I have blurred the printed area details and reduced the image area to better provide the complementary layering

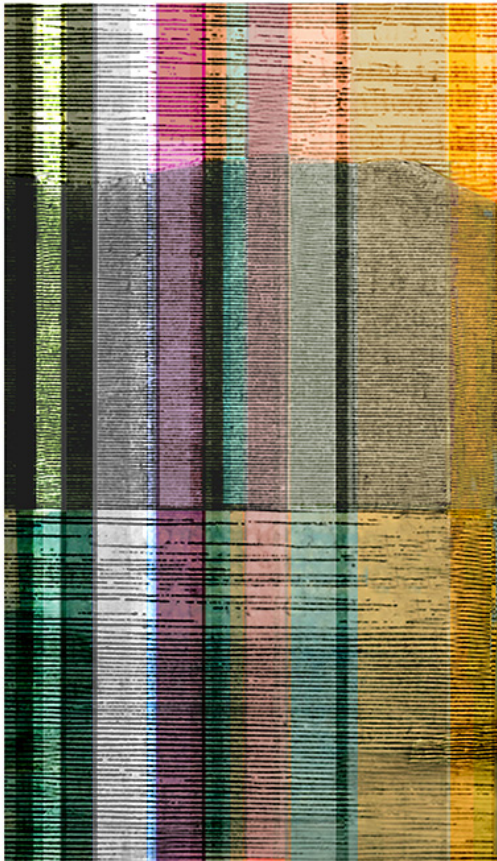


Here observe the physicality of the handmade marks on the glass

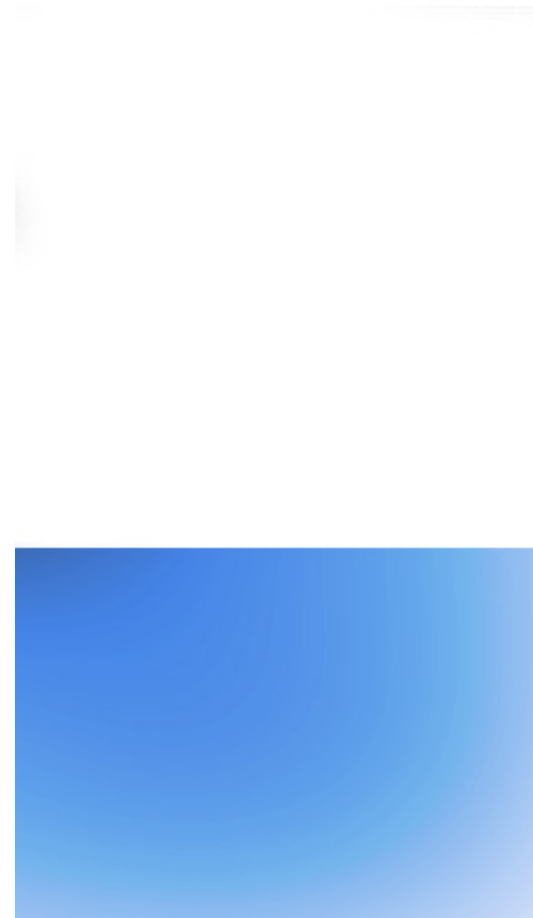


Panel 1

Aluminum printing surface 4



Glass painting surface layer 2



Panel 1

Glass painting layer 3 right alignment (transparent)

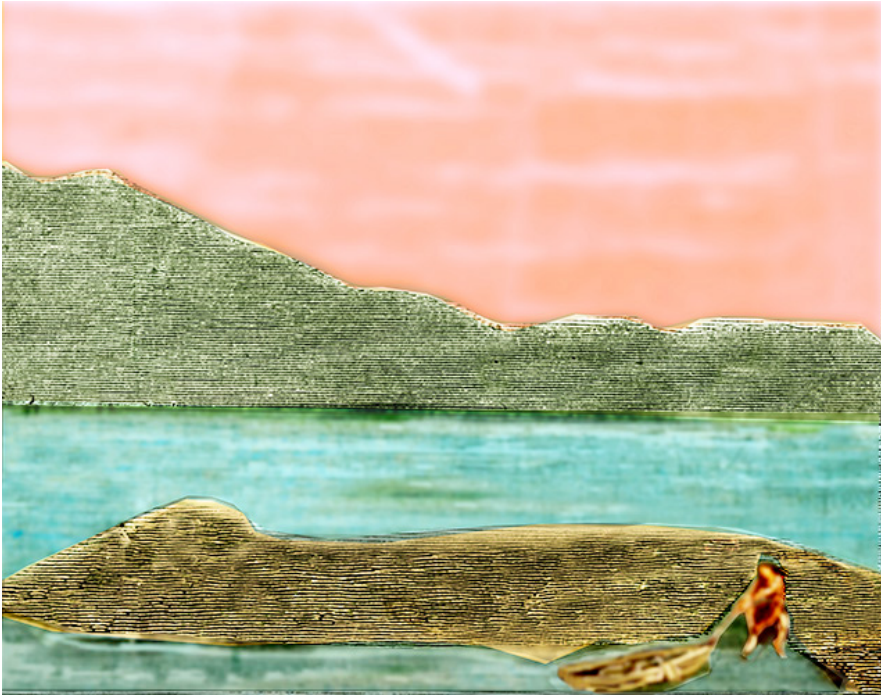


Sandblasting layer 1



Panel 2

Aluminum printing surface layer 4



Glass painting surface layer 3
(transparent)



Glass painting surface layer 2 (transparent)



Sandblasting surface layer 1

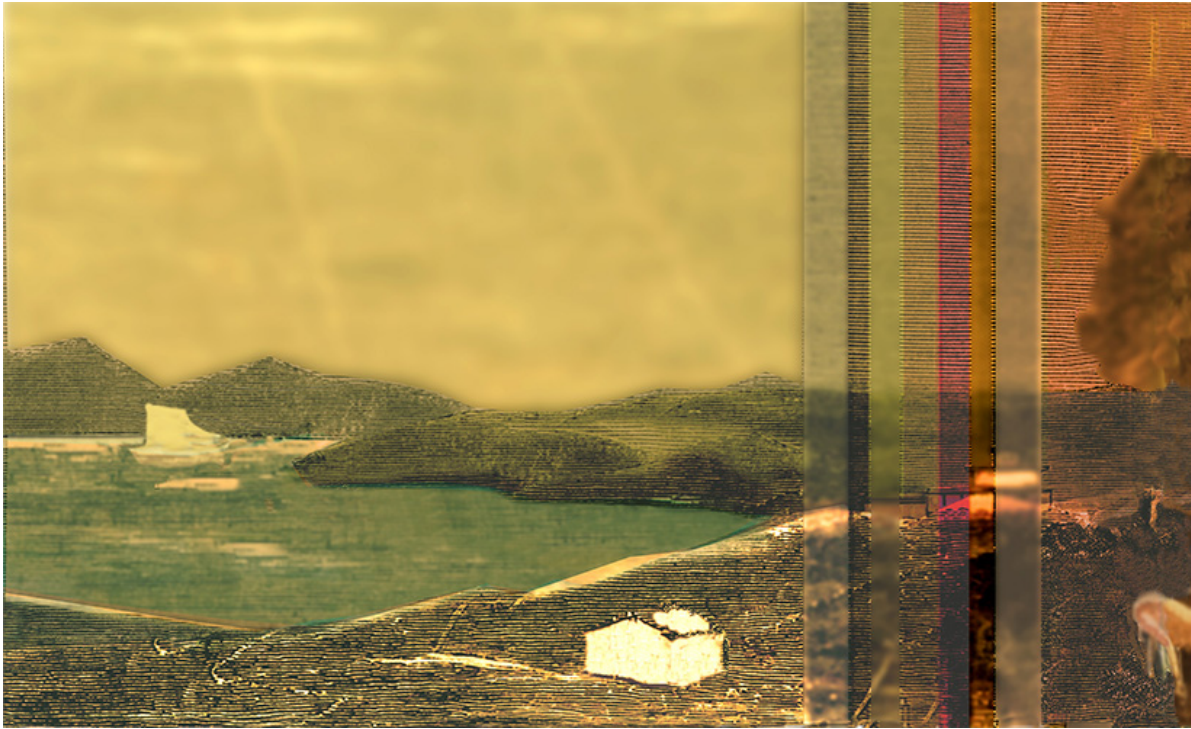


Panel 2 color sandblast surface model



Panel 3

Aluminum printing surface 4



Glass painting layer 3

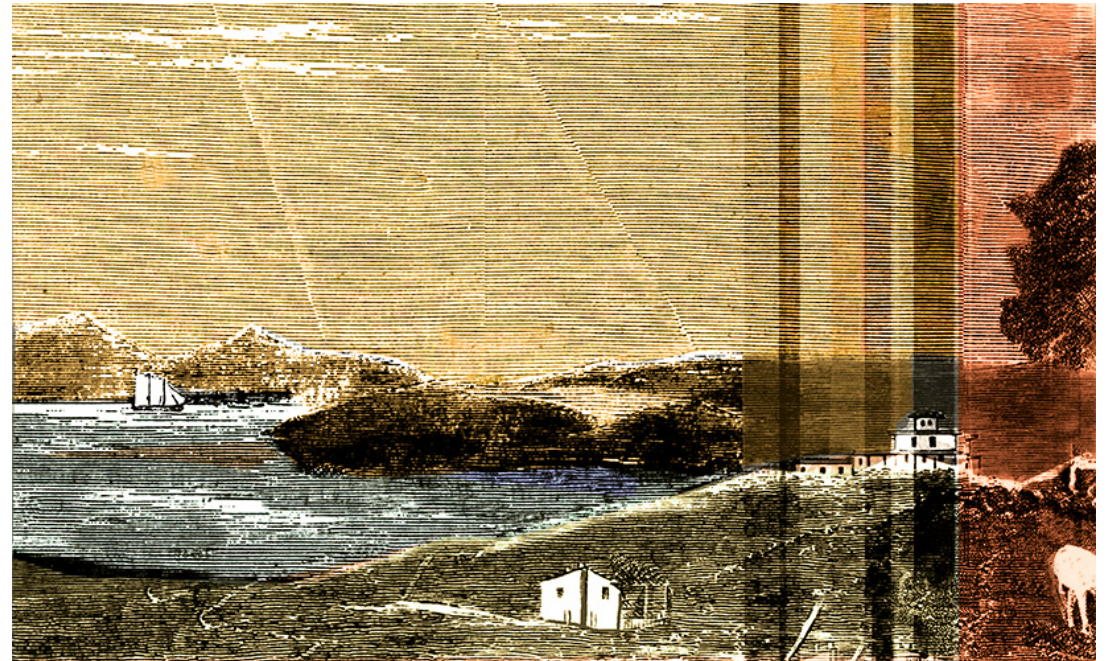


Panel 3

Glass painting layer 2

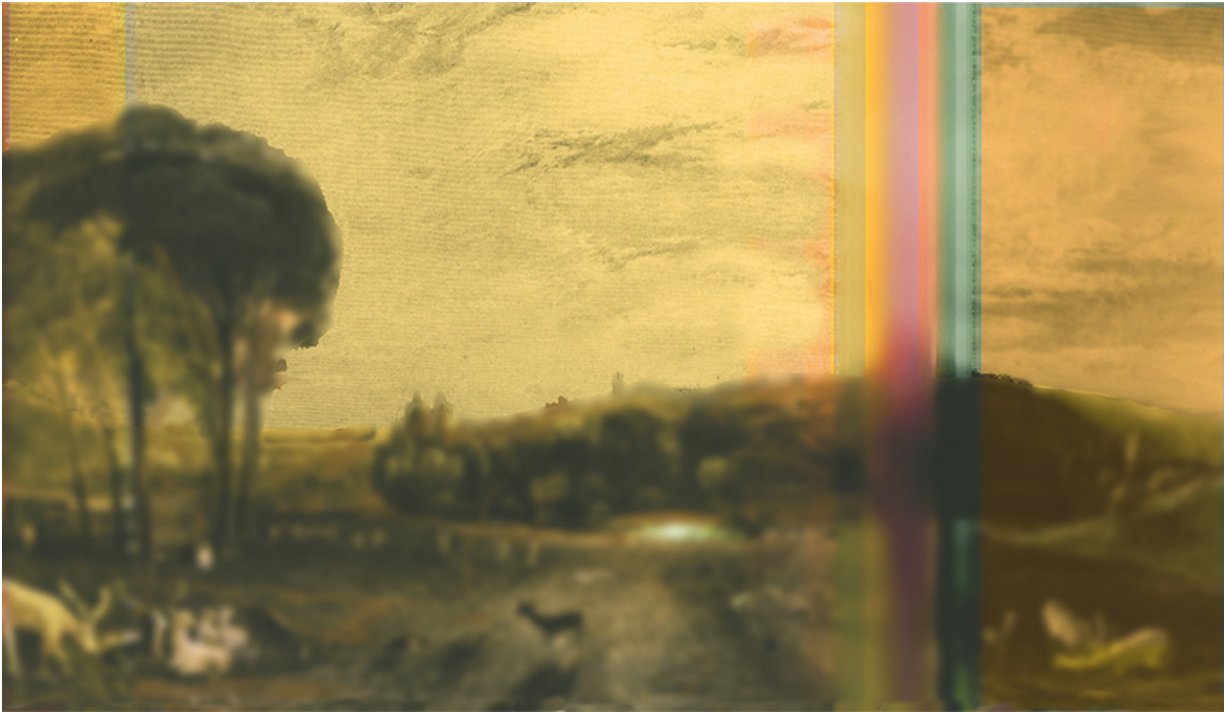


Sandblasting layer 1



Panel 4

Aluminum printing surface 4



Glass painting surface 3



Panel 4

Glass painting layer 2



Sandblasting layer color model



Panel 5

Aluminum printing



Glass painting panel layer 3

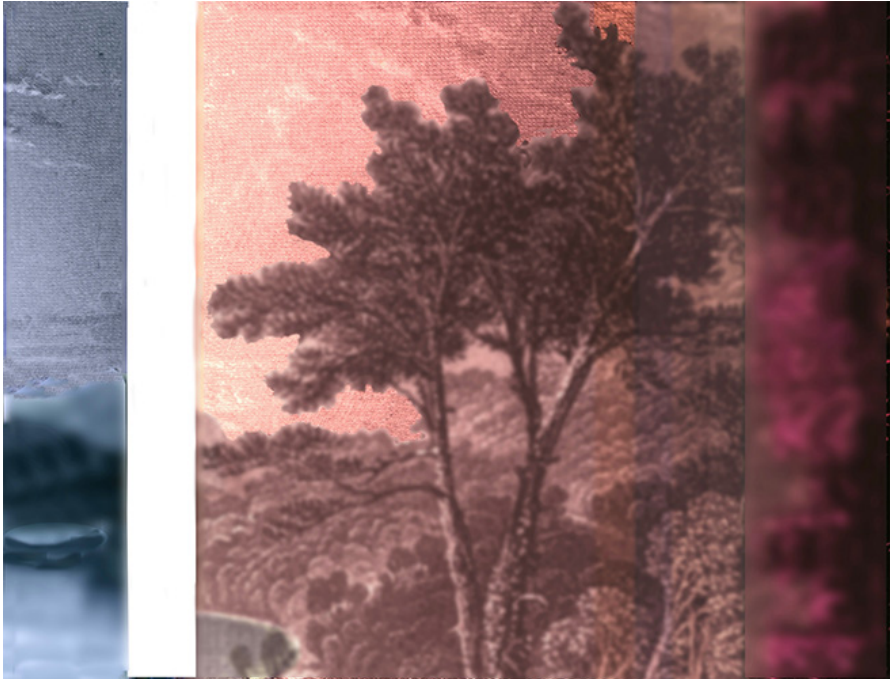


Panel 5 Sandblasting surface 1



Panel 6

Aluminum printing

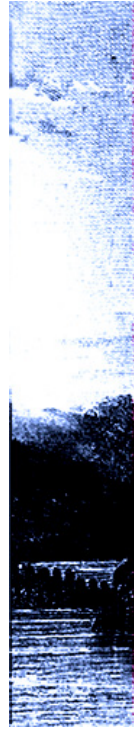


Glass painting layer 3



Panel 6

Glass painting layer 2



Sandblasting layer 1

