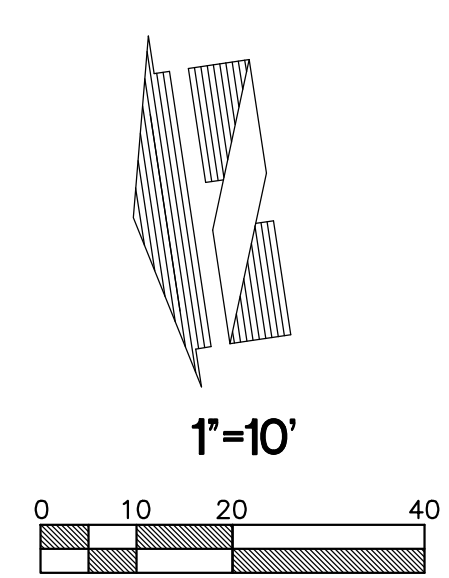
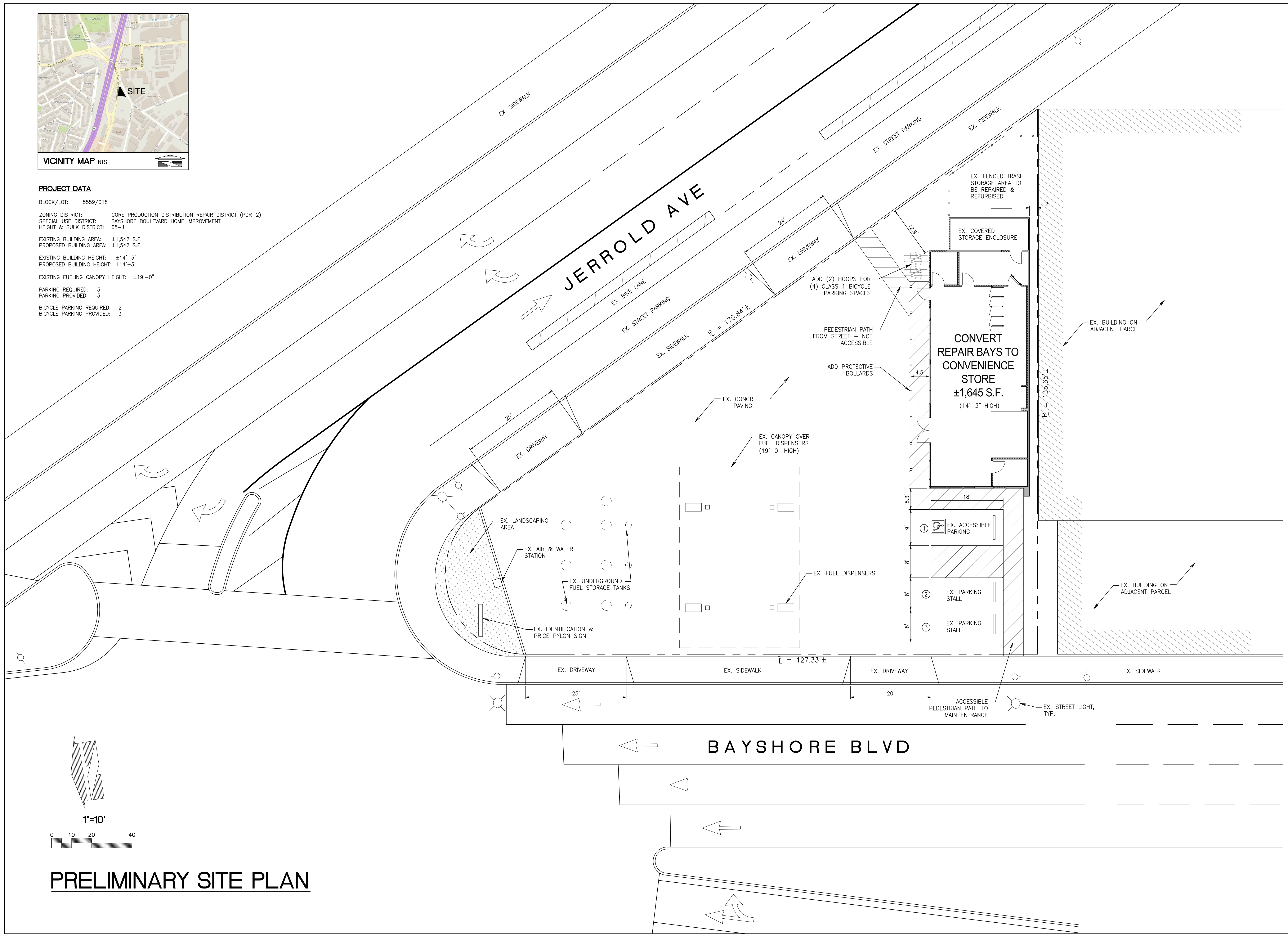


PROJECT DATA

BLOCK/LOT: 5559/018
 ZONING DISTRICT: CORE PRODUCTION DISTRIBUTION REPAIR DISTRICT (PDR-2)
 SPECIAL USE DISTRICT: BAYSHORE BOULEVARD HOME IMPROVEMENT
 HEIGHT & BULK DISTRICT: 65-J
 EXISTING BUILDING AREA: ±1,542 S.F.
 PROPOSED BUILDING AREA: ±1,542 S.F.
 EXISTING BUILDING HEIGHT: ±14'-3"
 PROPOSED BUILDING HEIGHT: ±14'-3"
 EXISTING FUELING CANOPY HEIGHT: ±19'-0"
 PARKING REQUIRED: 3
 PARKING PROVIDED: 3
 BICYCLE PARKING REQUIRED: 2
 BICYCLE PARKING PROVIDED: 3



PRELIMINARY SITE PLAN

Revision
 No. Date By Cld. Appr.
 Title:
PRELIMINARY SITE PLAN
CHEVRON C-STORE CONVERSION
101 BAYSHORE BLVD.
SAN FRANCISCO, CA

For:
SALKHI PETROLEUM
2145 MENDOCINO AVENUE
STA ROSA, CA 95401

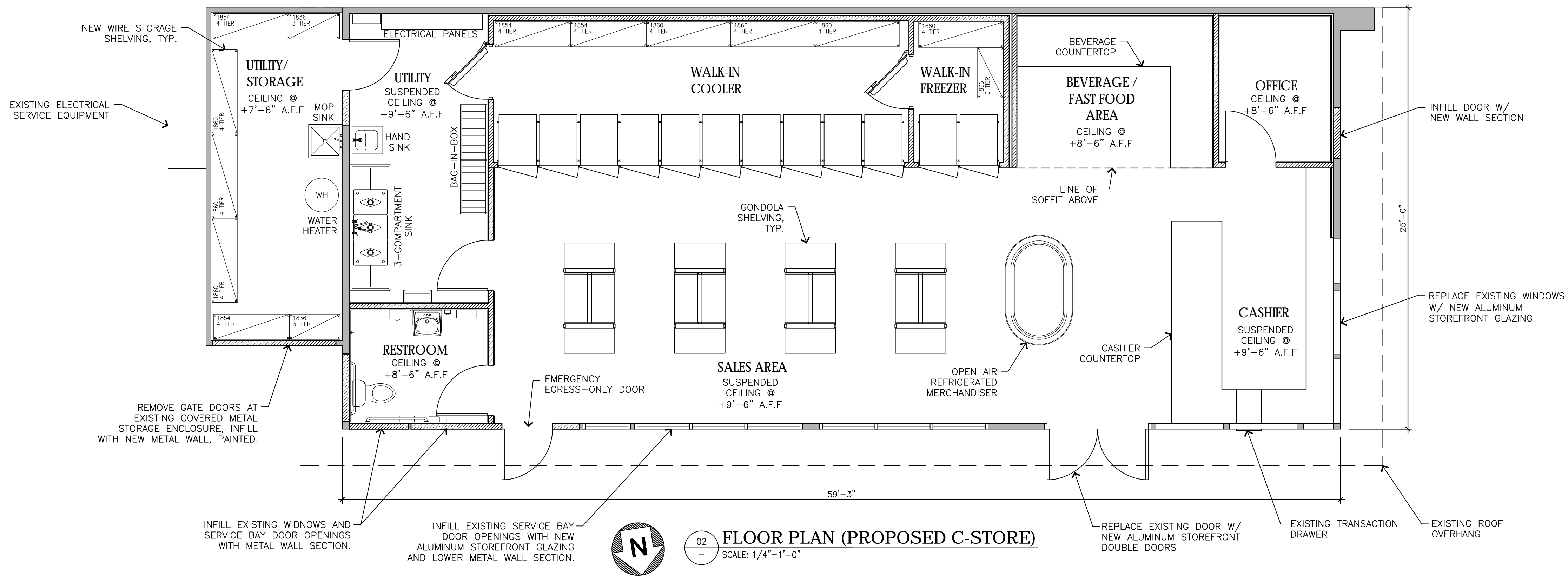
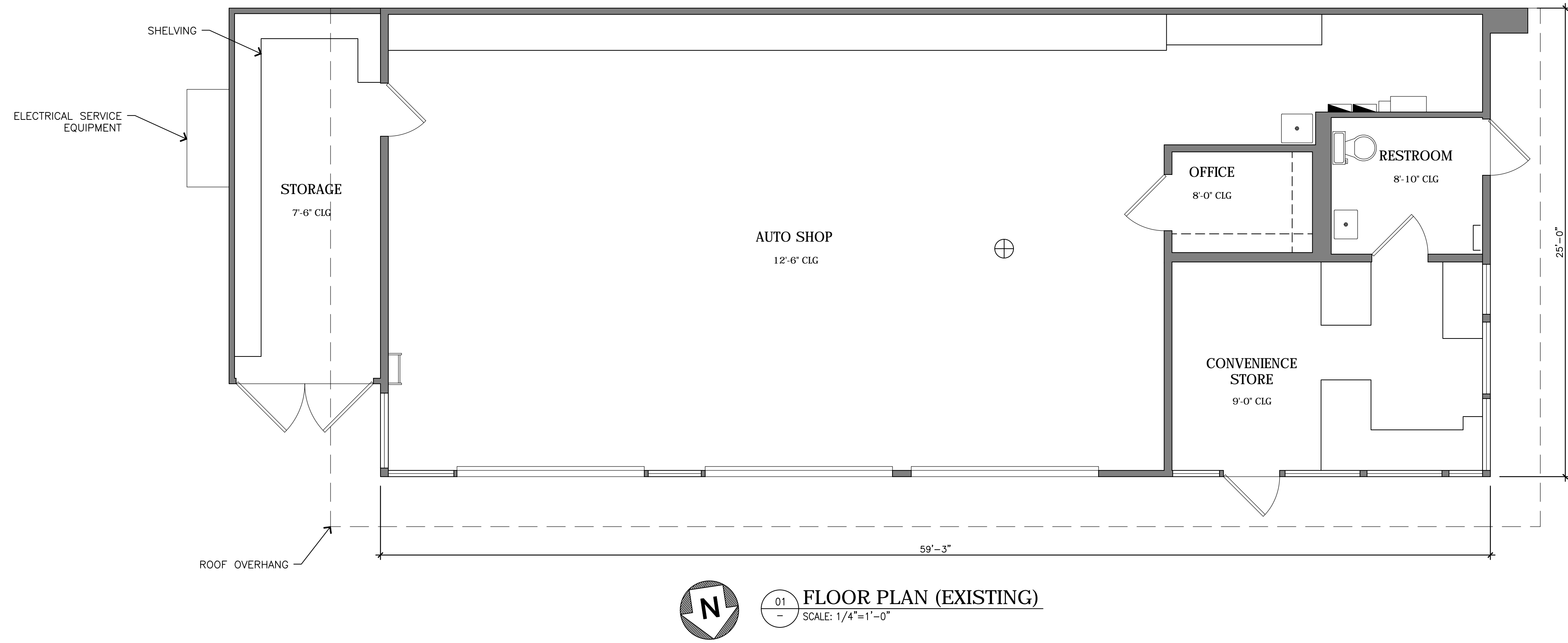
Scale:	Horizontal	Vertical
Designed	Drawn	Checked
Approved	Date	

18215 72ND AVENUE SOUTH
 KENT, WA 98032
 (425)251-6222 FAX
 (425)251-8782
 CIVIL ENGINEERING, LAND PLANNING,
 SURVEYING, ENVIRONMENTAL SERVICES



Job Number
18960
 Sheet
SP-1
 of

File:PA\18960A\18960\preliminary\18960_SP-1.dwg Date: /Time: 6/17/2019 11:43 AM Scale: 1" = 1' S:\KATTNER Xref: -



WALL LEGEND
 [Solid Line] EXISTING WALL
 [Dashed Line] NEW WALL

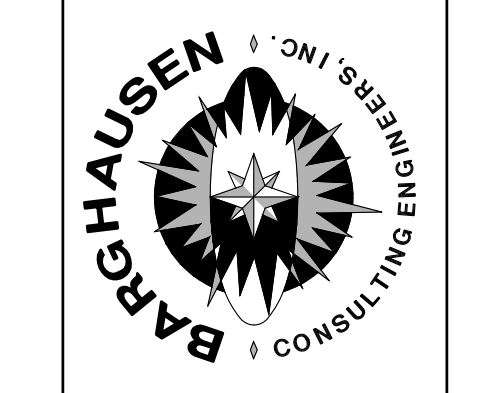
No.	Date	By	Clcd.	Appr.	Revision

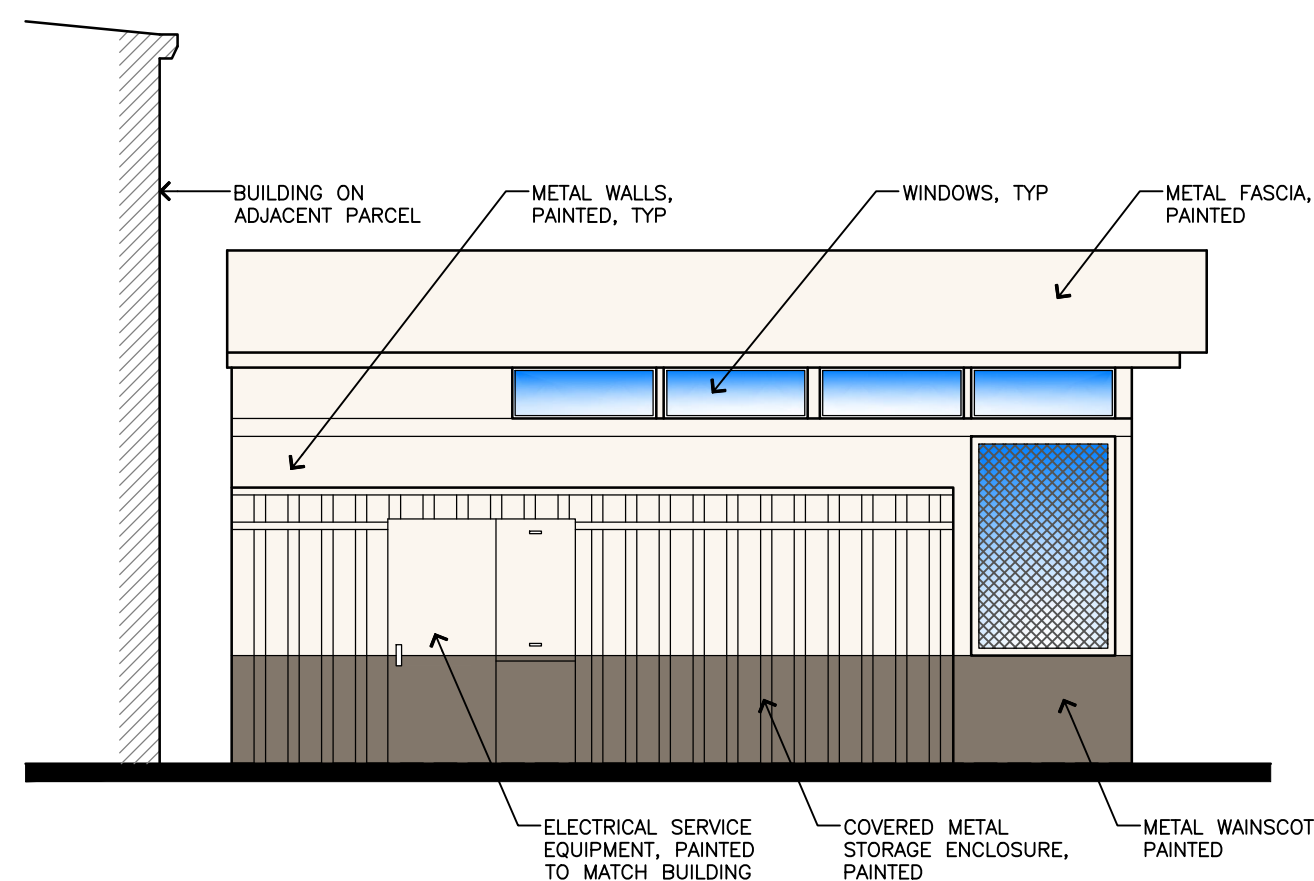
For:
SALKHI PETROLEUM
 2145 MENDOCINO AVENUE
 STA ROSA, CA 95401

Title:
FLOOR PLAN
CHEVRON C-STORE CONVERSION
 101 BAYSHORE BLVD.
 SAN FRANCISCO, CA

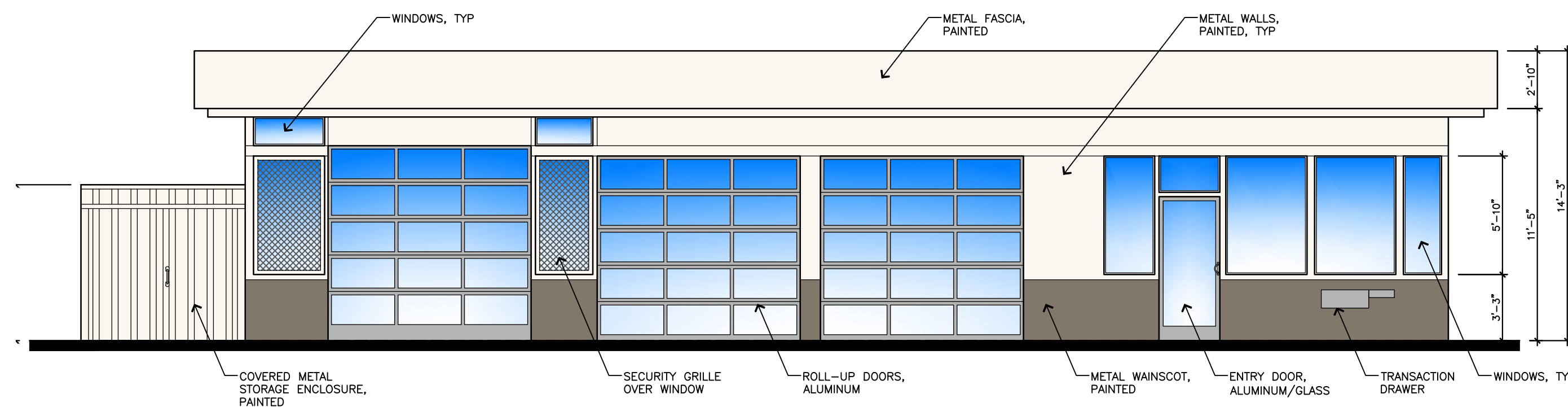
Designed	Drawn	Checked	Approved	Date

18215 72ND AVENUE SOUTH
 KENT, WA 98032
 (425)251-6222
 (425)251-8782 FAX
 CIVIL ENGINEERING, LAND PLANNING,
 SURVEYING, ENVIRONMENTAL SERVICES

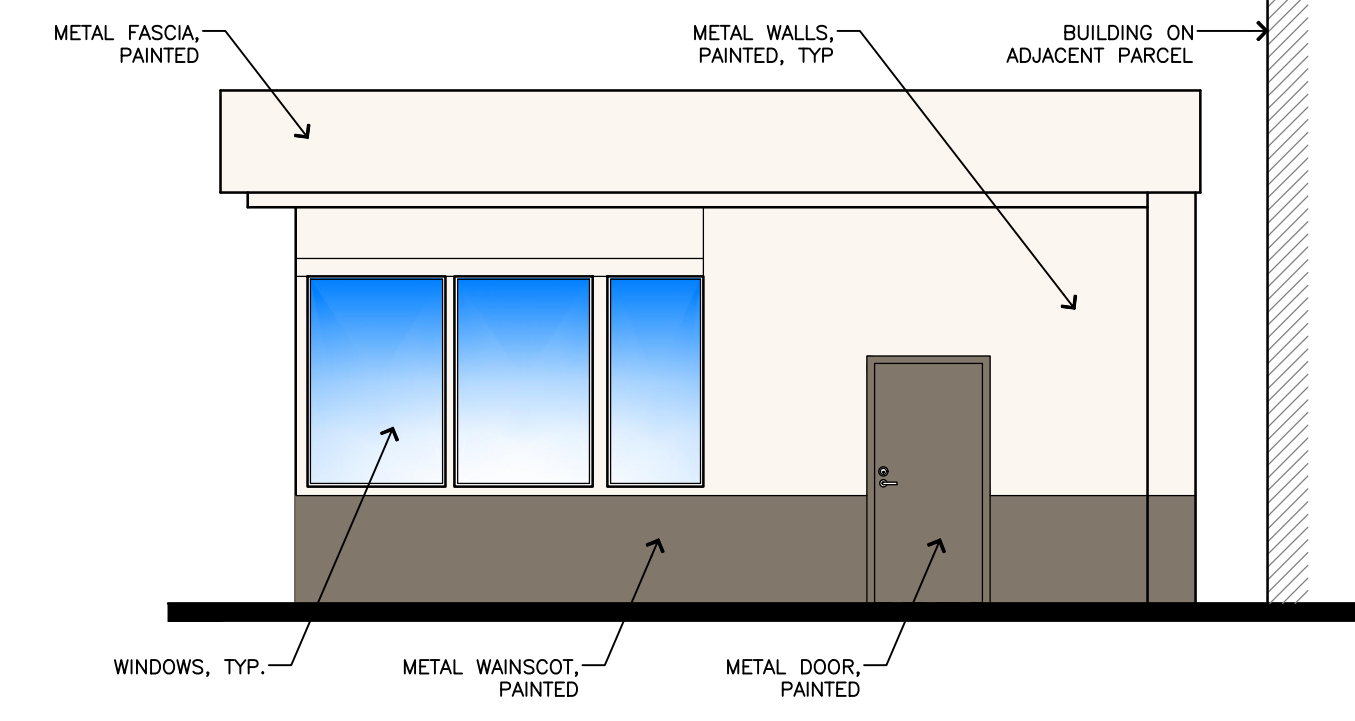




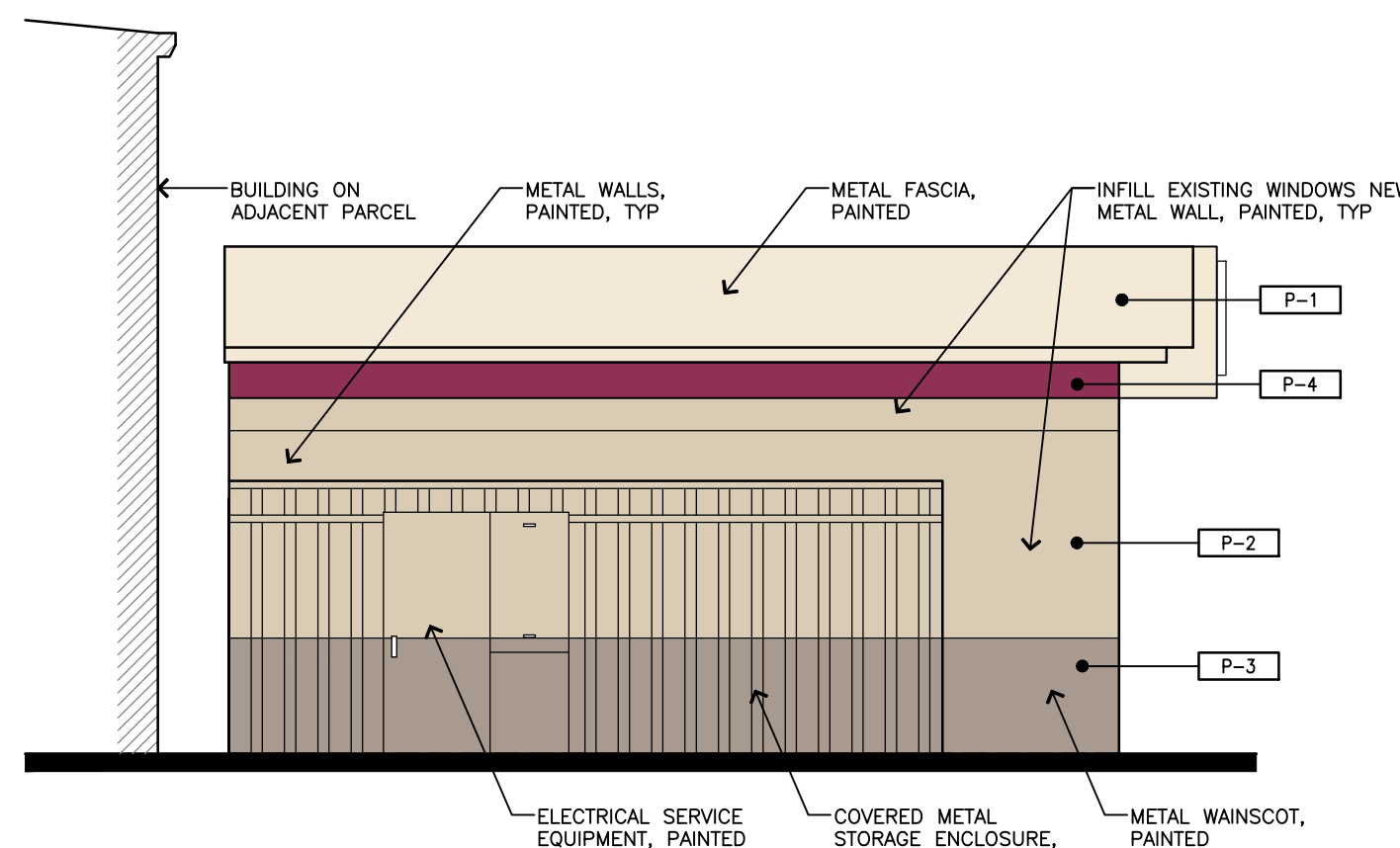
01 EAST ELEVATION - EXISTING
SCALE: 3/16"=1'-0"



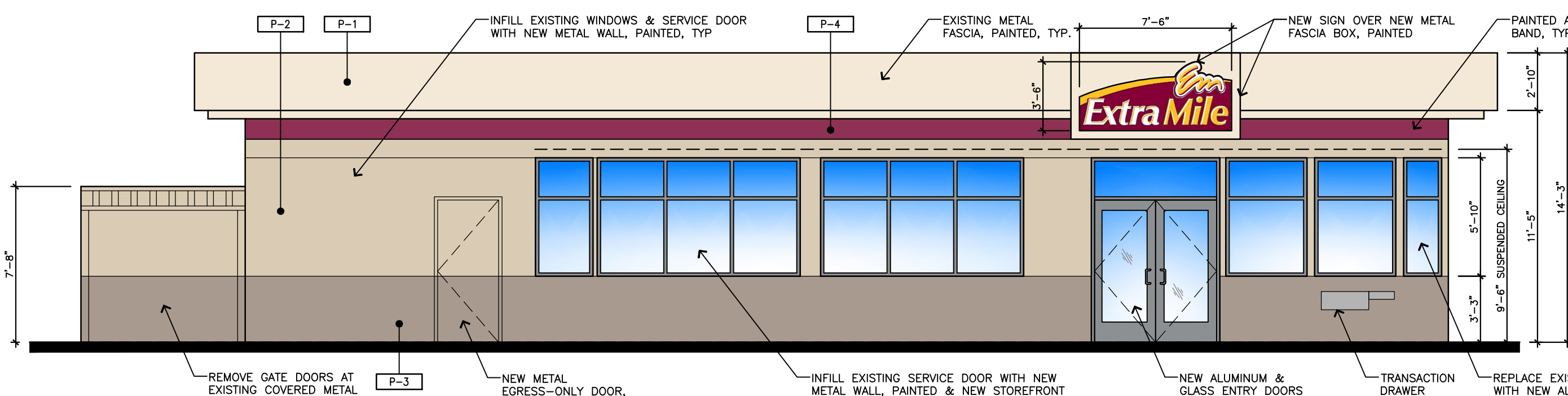
02 NORTH ELEVATION - EXISTING
SCALE: 3/16"=1'-0"



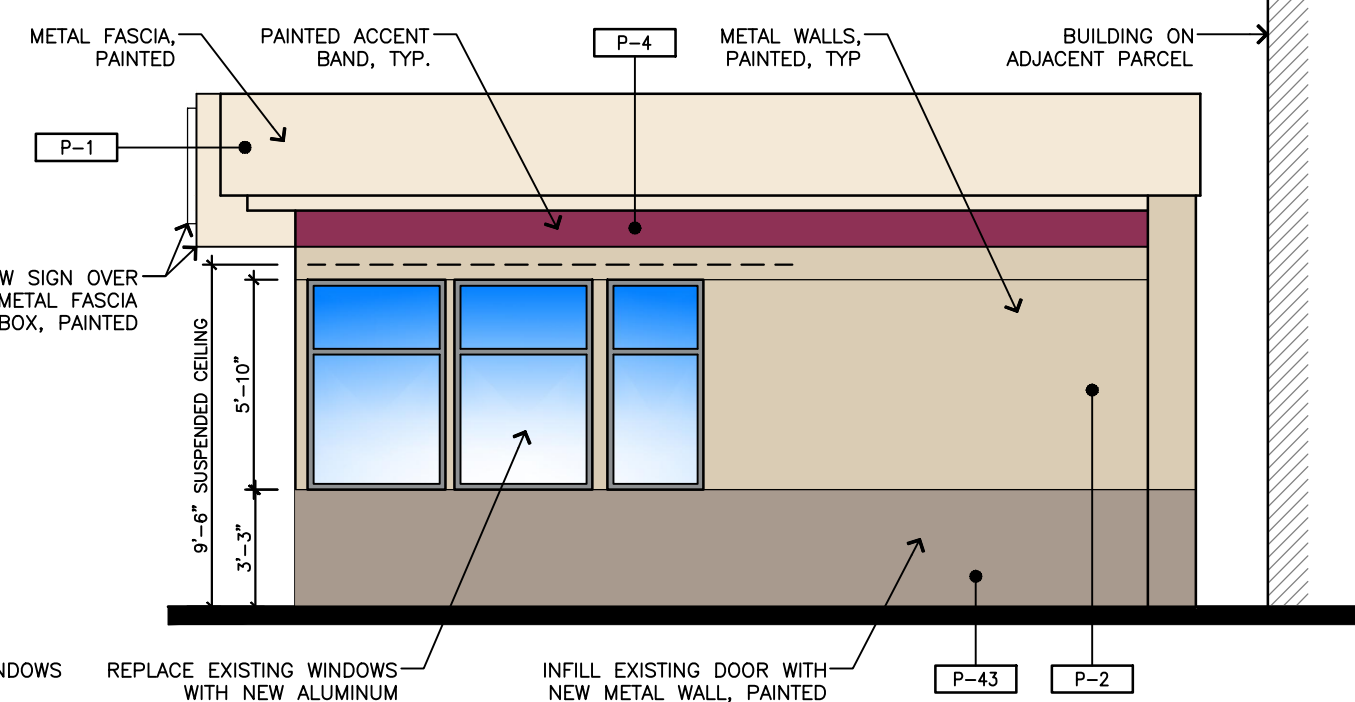
03 WEST ELEVATION - EXISTING
SCALE: 3/16"=1'-0"



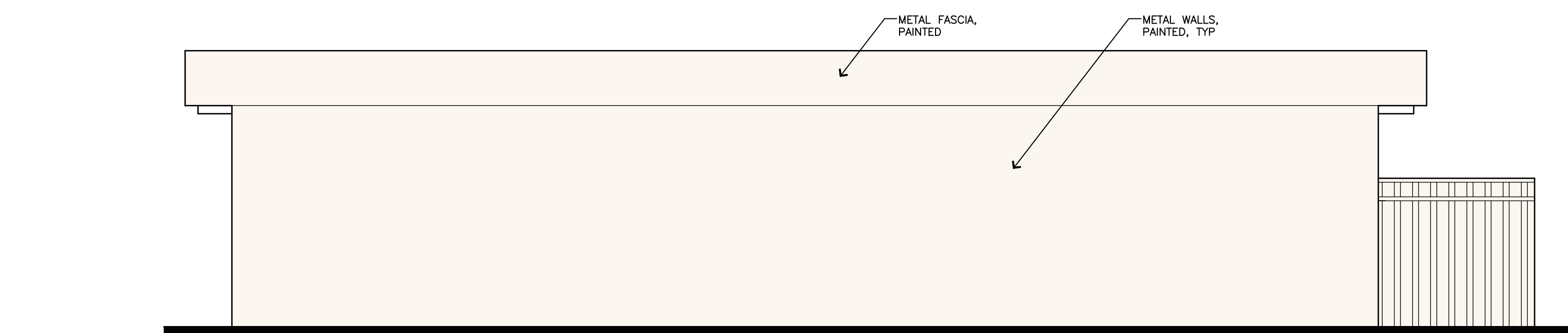
01A EAST ELEVATION - PROPOSED
SCALE: 3/16"=1'-0"



02A NORTH ELEVATION - PROPOSED
SCALE: 3/16"=1'-0"



03A WEST ELEVATION - PROPOSED
SCALE: 3/16"=1'-0"



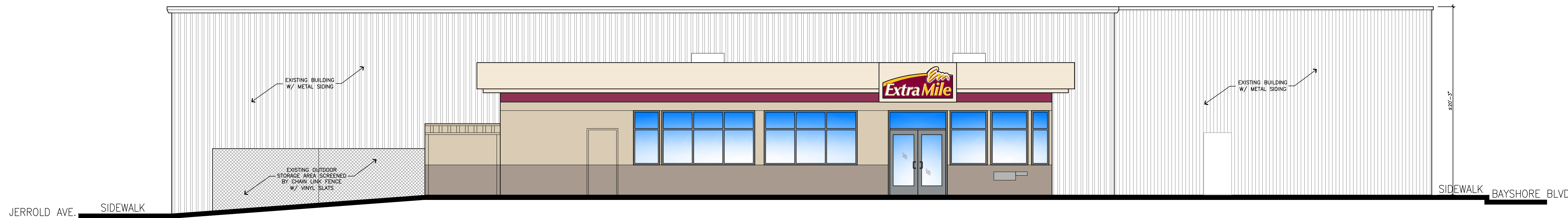
04 SOUTH ELEVATION - NO CHANGES
SCALE: 3/16"=1'-0"

COLOR LEGEND - PROPOSED

- P-1 PITTSBURG PAINTS NCS-101-PPG "CAFE AU LAIT", SEMI-GLOSS
- P-2 PITTSBURG PAINTS NCS-102-PPG "NUTMEG", SEMI-GLOSS
- P-3 PITTSBURG PAINTS NCS-104-PPG "MOCHA", SEMI-GLOSS
- P-4 PITTSBURG PAINTS NCS-103-PPG "CHILLED WINE", GLOSS

MATERIAL LEGEND - PROPOSED

- WALLS: INFILL WINDOW & DOOR OPENINGS AS NOTED WITH NEW METAL STUD FRAMING WITH 18 GAUGE GALVANIZED SHEET METAL PANELS TO MATCH EXISTING. PRIME AND PAINT PER SCHEDULE.
- WINDOWS: KAWNEER TRIFAB 451UT, CLEAR ANODIZED ALUMINUM, 1" LOW-E GLAZING. REPLACE ALL EXISTING WINDOWS WITH NEW. NO OPERABLE WINDOWS PROPOSED.
- DOOR: REPLACE EXISTING SINGLE ENTRY DOOR WITH NEW DOUBLE ENTRY DOOR. KAWNEER TRIFAB VG451, CLEAR ANODIZED ALUMINUM, NARROW STILE W/ 10" BASE, 1" LOW-E TEMPERED GLAZING.



04 NORTH SITE ELEVATION - PROPOSED
SCALE: 3/16"=1'-0"

Revision
By
Cld.
Appr.
Date

Title:
BUILDING EXTERIOR ELEVATIONS
CHEVRON C-STORE CONVERSION
101 BAYSHORE BLVD.
SAN FRANCISCO, CA

For:
SALKHI PETROLEUM
2145 MENDOCINO AVENUE
STA ROSA, CA 95401

Scale:
Horizontal
Vertical
Per Sheet

Designed SK
Drawn SK
Checked EH
Approved
Date 6/14/19

18215 72ND AVENUE SOUTH
KENT, WA 98032
(425)251-6222 FAX
(425)251-8782
CIVIL ENGINEERING, LAND PLANNING,
SURVEYING, ENVIRONMENTAL SERVICES



Job Number
18960
Sheet
A2.1
of