



FRONT ELEVATION



REAR ELEVATION



INTERIOR



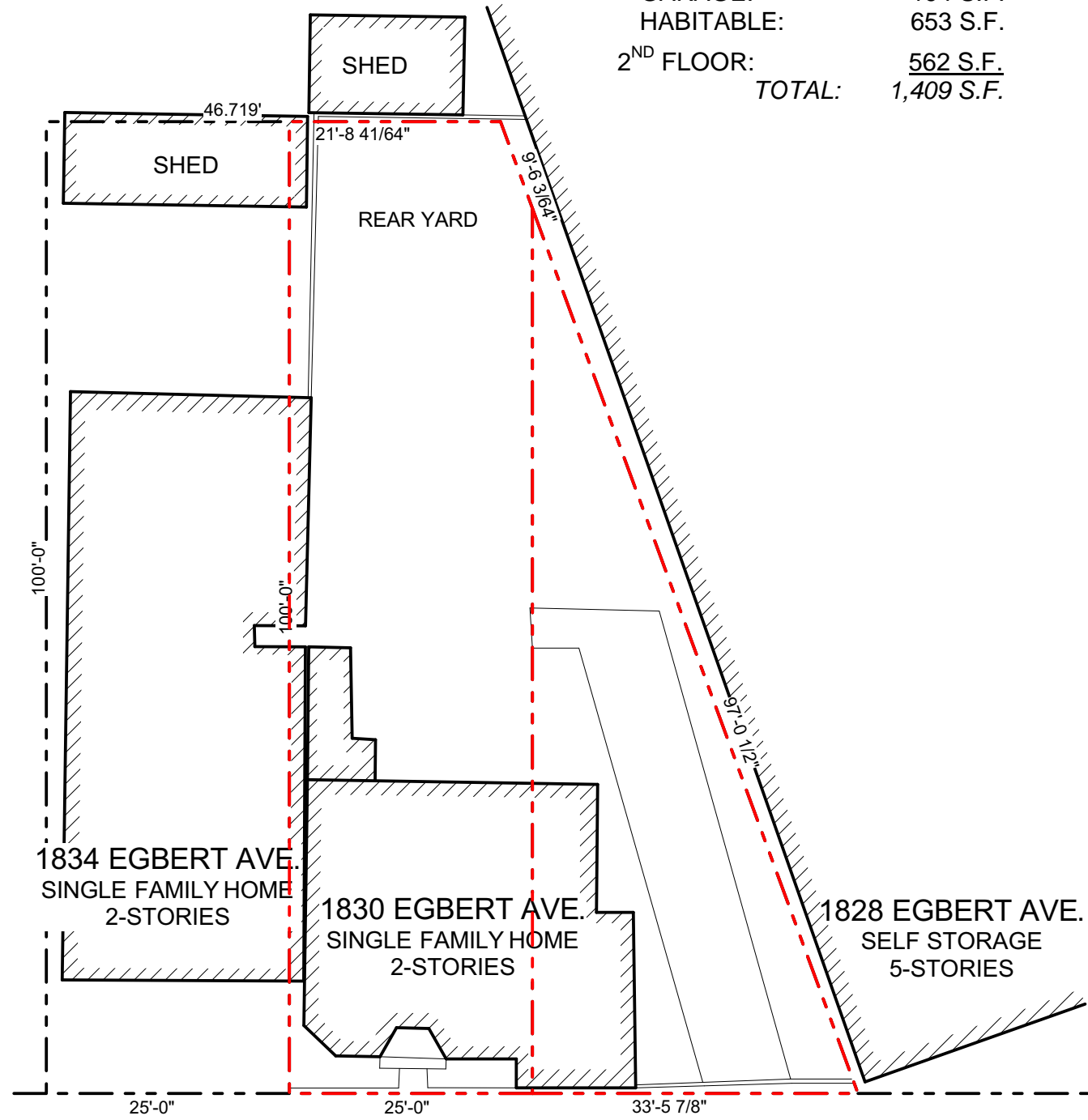
INTERIOR

1830-1832 EGBERT AVE.
S.F., CA 94124

02 OCTOBER 2019

Kotas Pantaleoni
Architects
70 Zoe Street, Suite 200
San Francisco, CA 94107
415 495 4051 tel.
495 495 8885 fax
www.kp-architects.com

EXISTING BUILDING SIZE:
 1ST FLOOR:
 GARAGE: 194 S.F.
 HABITABLE: 653 S.F.
 2ND FLOOR:
 TOTAL: 562 S.F.
 TOTAL: 1,409 S.F.



SIDEWALK
 EGBERT AVENUE

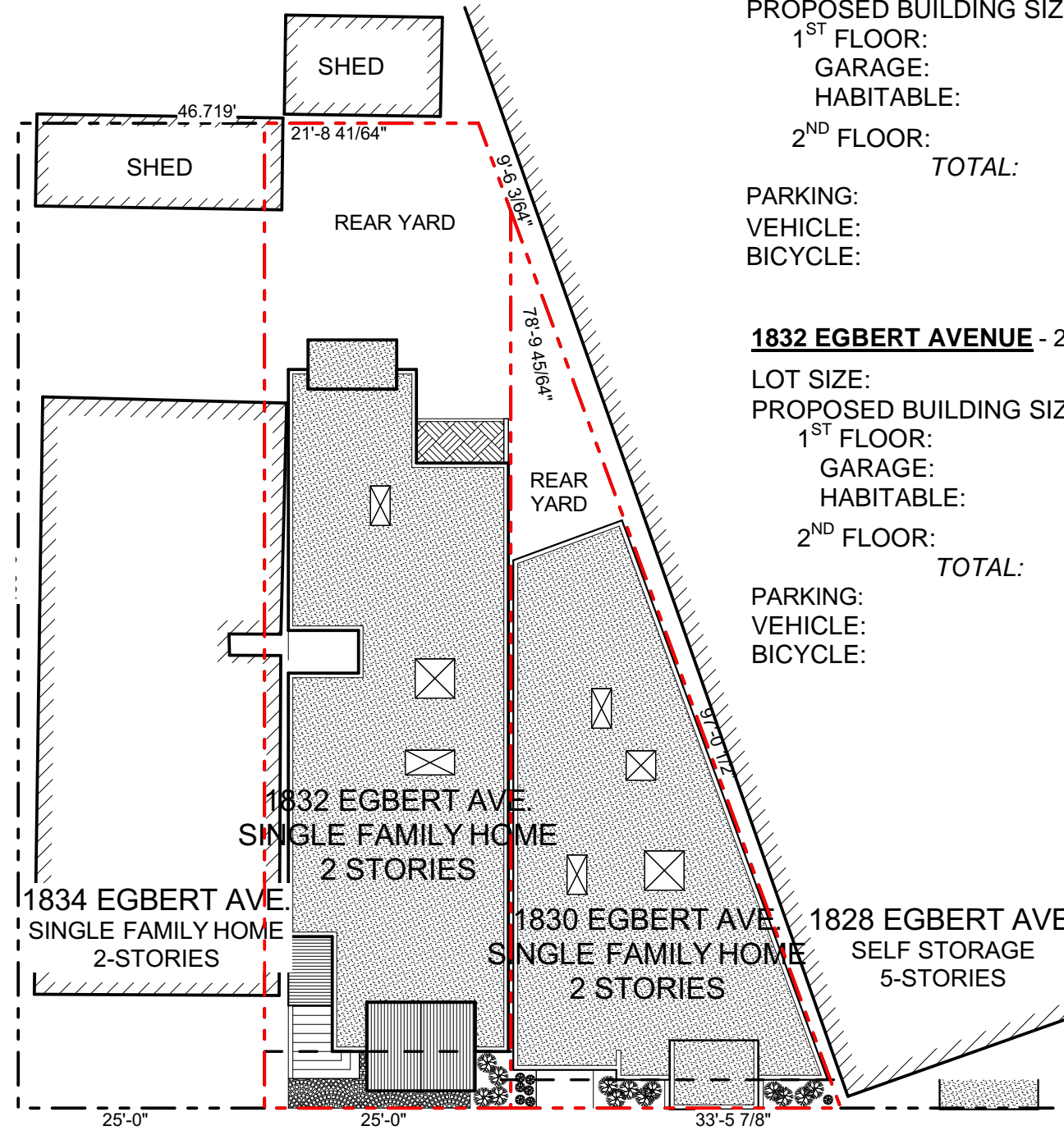


1

EXISTING SITE PLAN

SCALE: 1/16" = 1'-0"

1830 EGBERT AVENUE - 2 BR., 3 BA.
 LOT SIZE: 1,463 S.F.
 PROPOSED BUILDING SIZE:
 1ST FLOOR:
 GARAGE: 341 S.F.
 HABITABLE: 700 S.F.
 2ND FLOOR:
 TOTAL: 1,080 S.F.
 TOTAL: 2,122 S.F.
 PARKING:
 VEHICLE: 1
 BICYCLE: 1 CLASS 1 SPACE



SIDEWALK
 EGBERT AVENUE



2

PROPOSED SITE PLAN

SCALE: 1/16" = 1'-0"

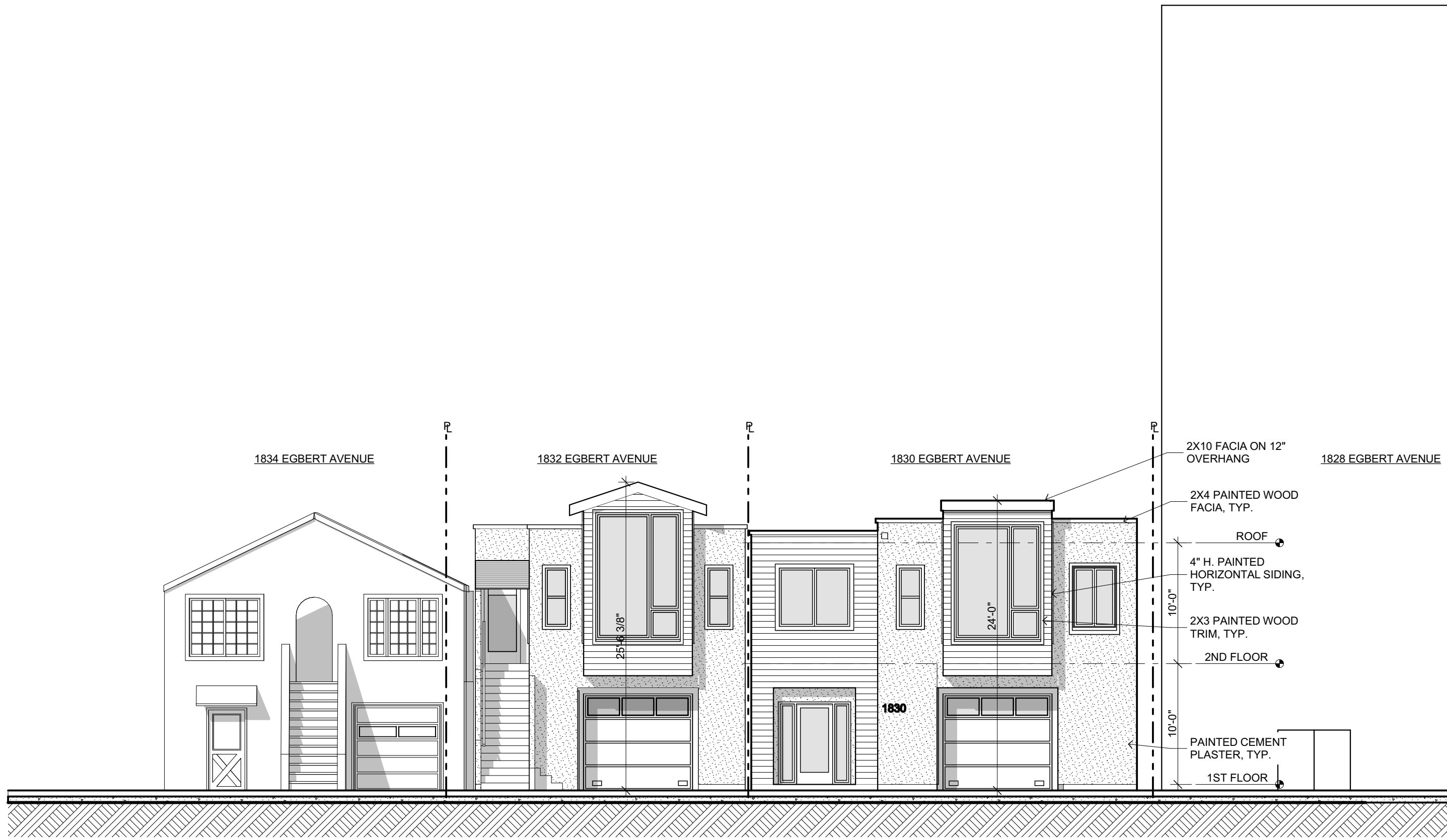
1832 EGBERT AVENUE - 2 BR., 3 BA.
 LOT SIZE: 2,482 S.F.
 PROPOSED BUILDING SIZE:
 1ST FLOOR:
 GARAGE: 501 S.F.
 HABITABLE: 799 S.F.
 2ND FLOOR:
 TOTAL: 1,256 S.F.
 TOTAL: 2,556 S.F.
 PARKING:
 VEHICLE: 1
 BICYCLE: 1 CLASS 1 SPACE

1830-1832 EGBERT AVE.

S.F., CA 94124

02 OCTOBER 2019

Kotas Pantaleoni
 Architects
 70 Zoe Street, Suite 200
 San Francisco, CA 94107
 415 495 4051 tel.
 495 495 8885 fax
 www.kp-architects.com

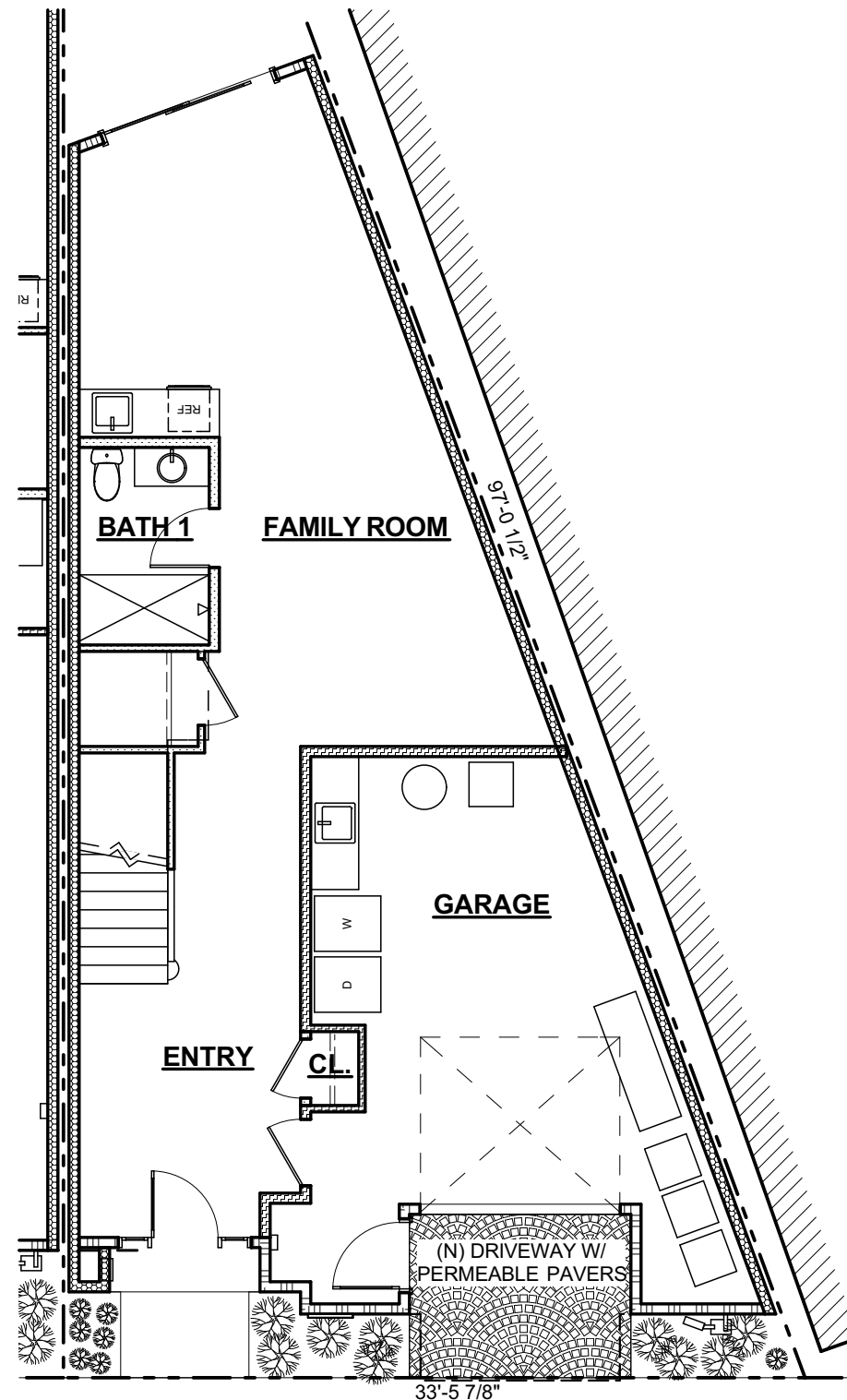


1 PROPOSED SOUTH ELEVATION
 SCALE: 1/8" = 1'-0"

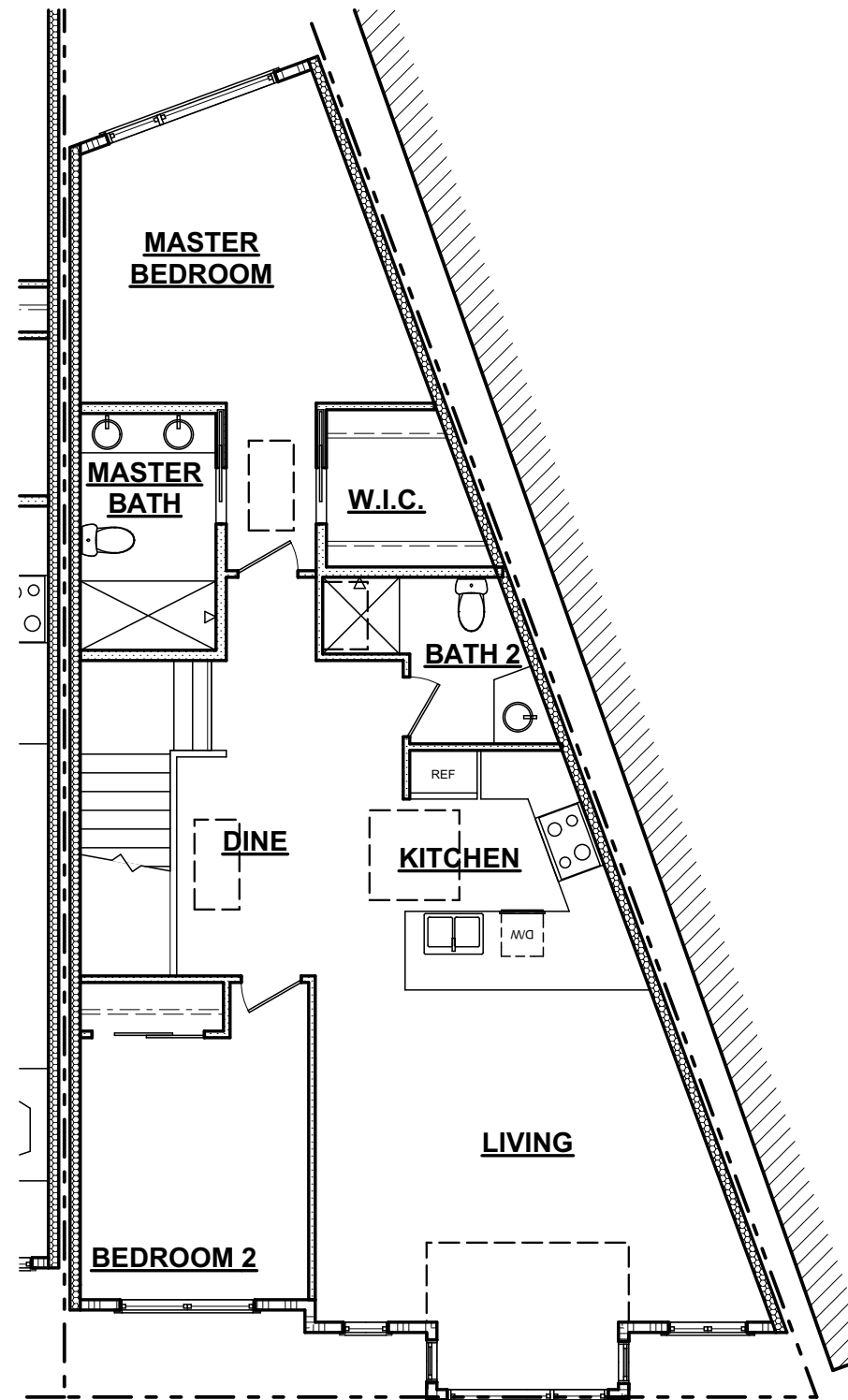
1830-1832 EGBERT AVE.
 S.F., CA 94124

02 OCTOBER 2019

Kotas Pantaleoni
 Architects
 70 Zoe Street, Suite 200
 San Francisco, CA 94107
 415 495 4051 tel.
 495 495 6885 fax
 www.kp-architects.com



1 1830 - PROPOSED 1ST FLOOR
SCALE: 1/8" = 1'-0"

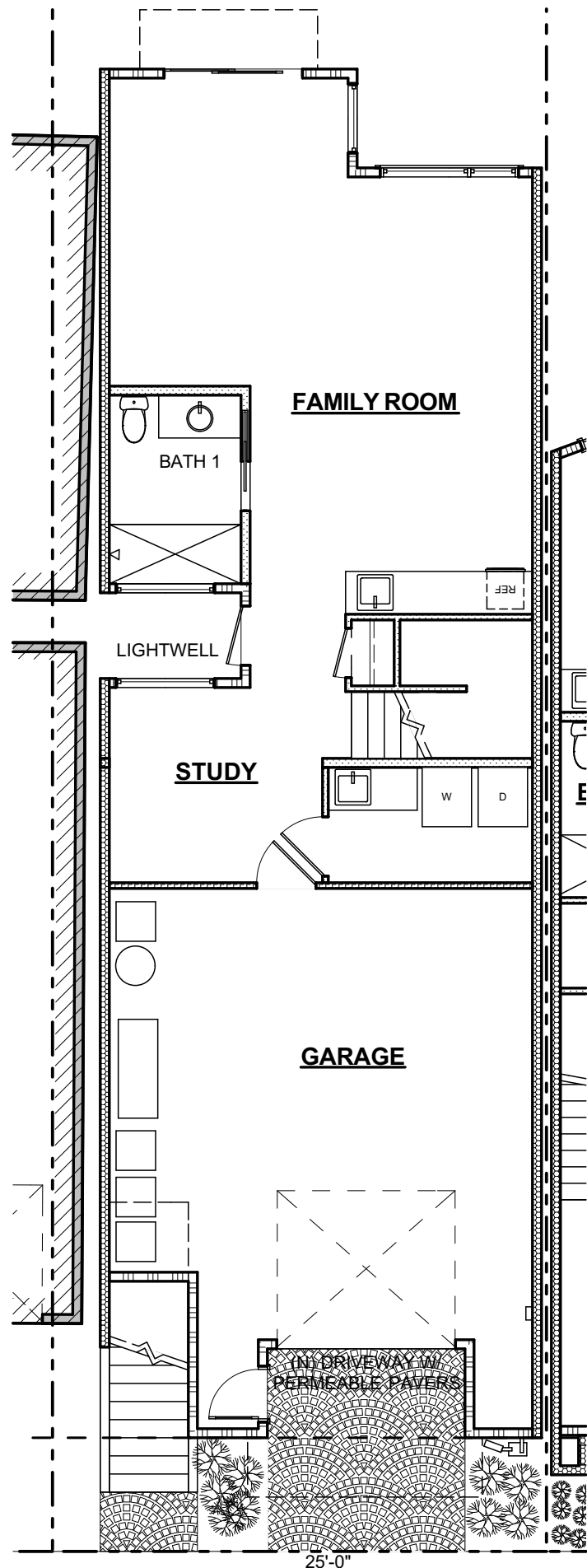


2 1830 - PROPOSED 2ND FLOOR
SCALE: 1/8" = 1'-0"

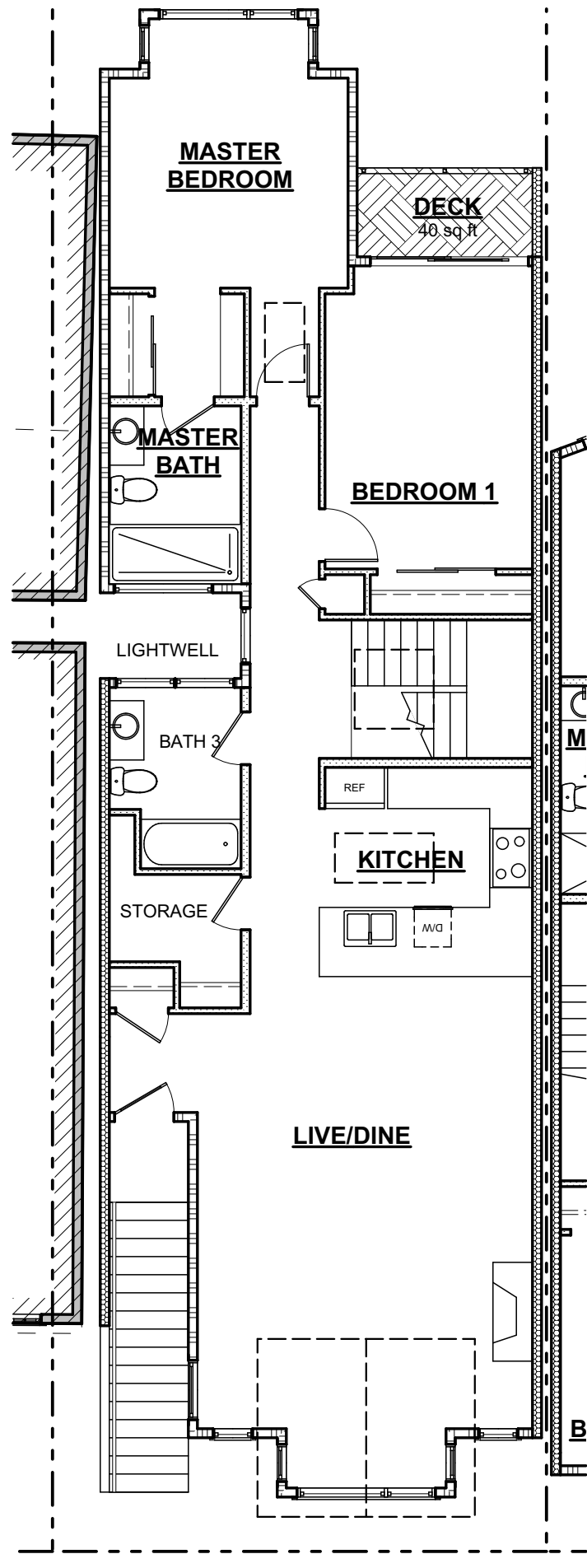
1830-1832 EGBERT AVE.
S.F., CA 94124

02 OCTOBER 2019

Kotas Pantaleoni
Architects
70 Zoe Street, Suite 200
San Francisco, CA 94107
415 495 4051 tel.
495 495 6885 fax
www.kp-architects.com



1 1832 - PROPOSED 1ST FLOOR
SCALE: 1/8" = 1'-0"



2 1832 - PROPOSED 2ND FLOOR
SCALE: 1/8" = 1'-0"

1830-1832 EGBERT AVE.
S.F., CA 94124

02 OCTOBER 2019

Kotas Pantaleoni
Architects
70 Zoe Street, Suite 200
San Francisco, CA 94107
415 495 4051 tel.
495 495 6885 fax
www.kp-architects.com