

# INDIA BASIN

---

June 2018



# AGENDA

1. Project Overview
3. Community Benefits
4. Schedule

# EXISTING VIEW



# INDIA BASIN PROJECT AREA

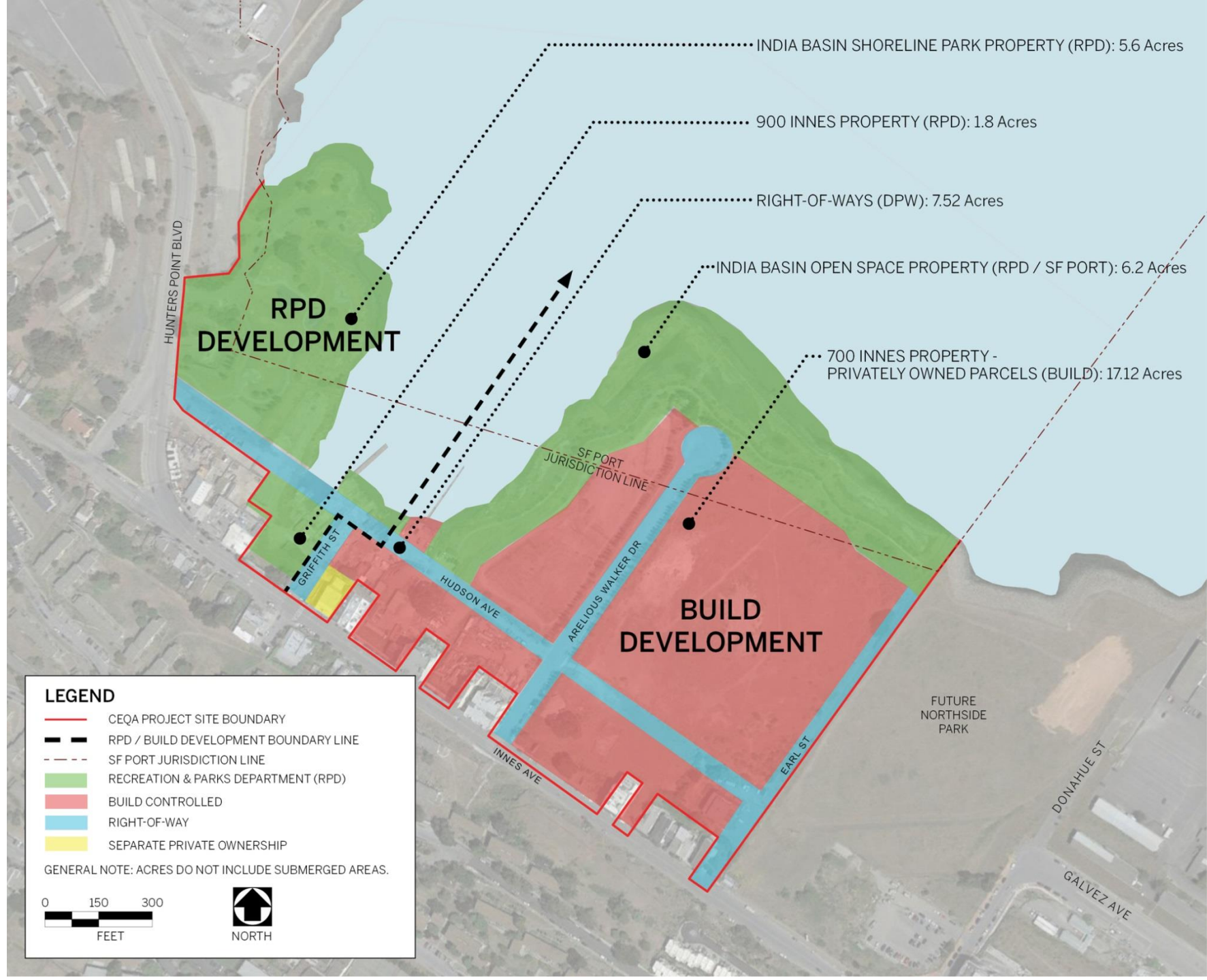
## BUILD DEVELOPMENT

Private	17.12
Public Open Space (RPD / SF Port)	6.2
ROW (DPW / SF Port)	5.94
<b>Subtotal</b>	<b>29.26</b>
<b>% Subtotal</b>	<b>77%</b>

## RPD DEVELOPMENT

Public Open Space	7.4
ROW (DPW / SF Port)	1.58
<b>Subtotal</b>	<b>8.98</b>
<b>% Subtotal</b>	<b>23%</b>

**Total 38.24 acres**



# COMMUNITY ENGAGEMENT TO DATE

## ENGAGEMENT

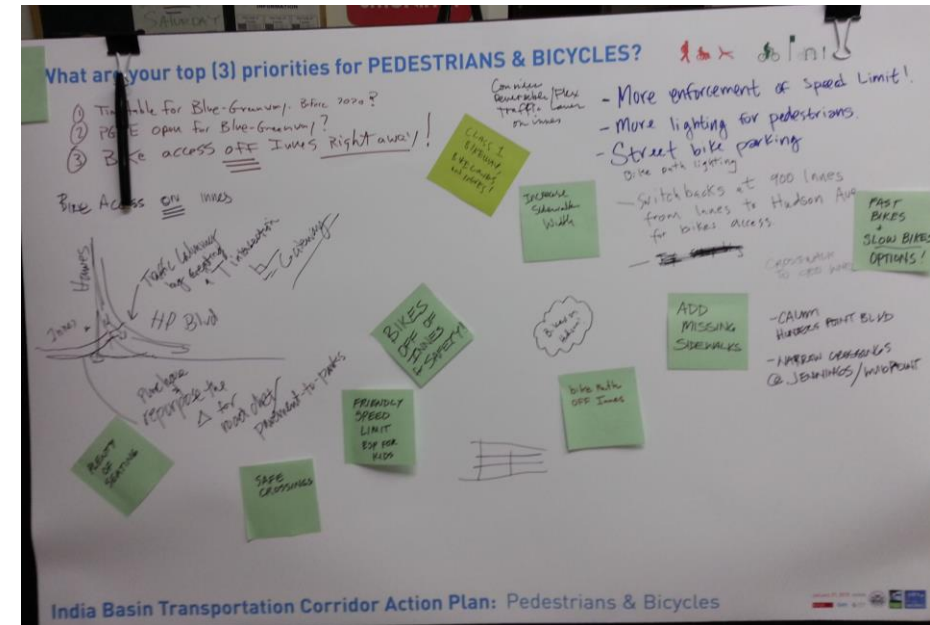
*Presented to:*

- India Basin Working Group (IBWG)
- India Basin Neighborhood Association (IBNA)
- Bayview Working Group (BVWG)
- Nearby Homeowners Associations (HOAs)
- Economic Development on Third Street (EDOT)
- Hunters Point Shipyard Citizens Advisory Committee (HPS CAC)

## BY THE NUMBERS

**80+** Community and Stakeholder Meetings

**22** Public Workshops



# 6 GUIDING PRINCIPLES



Complete the Neighborhood



Shape Public Space for Public Life



Craft a Human-Scale Village



Cultivate a Robust Urban Ecology



Foster an Authentic Sense of Place



Grow a Legacy of Stewardship

# BUILDING MASSING EXISTING ZONING



# BUILDING MASSING PROPOSED





# SUMMARY

## Program

<b>Units</b>	1,575
<b>Heights</b>	1 to 14 stories
<b>Parking</b>	1,575
<b>Residential</b>	1mm NSF
<b>Commercial</b>	140,000k NSF
<b>BMR</b>	25% affordable, with a range of income levels
<b>Park Area</b>	12 acres, (23 acres contiguous)



# SITE PLAN



# DIVERSE PUBLIC REALM



# RETAIL CORRIDOR



Neighborhood Commercial

# BICYCLE NETWORK

- **New Class 1 bike lane**, dedicated and protected cycle intended for commuter bikers.
- **Multi-use shared path**, Class III multi-use trail at the edge of Northside Park that provides additional bike access to the beach.
- **Bike Parking**, along Arelious Walker to accommodate bike access to retail, food and beverage.



Class I Cycle Track



Class III "Sharrow"



Multi-Use Shared Path

Add pedestrian network/trail  
network slide

# COMMUNITY BENEFITS

## Workforce



Partner with local non-profits and community based organizations to support job readiness and barrier removal services for entry into City run programs such as CityBuild.

## Transportation



Fund improvements to local transit for faster access to downtown SF. Build several miles of new Class 1 bike lanes and significantly improve the pedestrian network. Contribution to SFMTA for Bayview transportation priority improvements.

## Childcare



Build a childcare facility onsite operated by a local Bayview provider.

## Affordable Housing



Build 25% or 394 housing units for families earning a wide range of incomes. Units will offer the maximum neighborhood preference rate of 40% to families living within District 10.

## Open Space



Partnering with the City to entitle, build and maintain 23 + acres of new parkland to provide a range of experiences.

## Local Business Incubator



Offer community spaces and stalls in the Public Market for local vendors and artisans to start and grow businesses.

# COMMUNITY BENEFITS

## Arts Opportunities / Installations



Provide up to 5 public sculpture sites throughout the park encouraging a rotating public sculpture garden.

## India Basin Trust



Create a stewardship program to provide on-site operations, maintenance, programming, social capacity building, and community resilience.

## Sustainability



Aspiring to be an international model for district-wide sustainability and resilience. Manage 100% of stormwater on-site with no discharge into City combined sewer at full buildout.

## Complete Streets



Connected and safe streets, paths, and trails for biking, walking and transit.

## Neighborhood Amenities



Permit and build neighborhood-serving retail, small office space, and flex space. Allocating space to accommodate a grocery store.

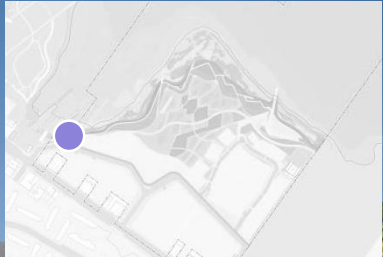


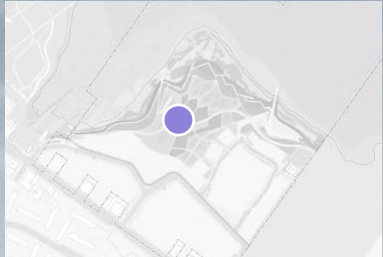
# ARRIVAL EXPERIENCE



# ARRIVAL EXPERIENCE 1













# Seasonal Wetlands & Shoreline Boardwalk

# ARRIVAL EXPERIENCE 2



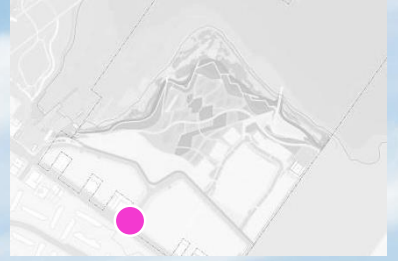




777

Juice bar

PULP  
JUICE BAR



Innes & Arelious  
Walker Transit Plaza



Arelious Walker



**BUILD:** SOU | BIONIC | GEHL | STUDIO | SHERWOOD

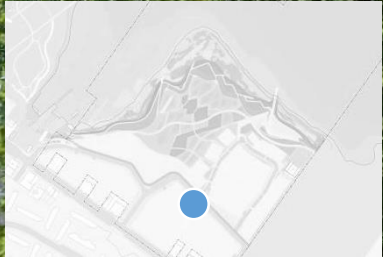
Public Market





# ARRIVAL EXPERIENCE 3





The Reading Nook

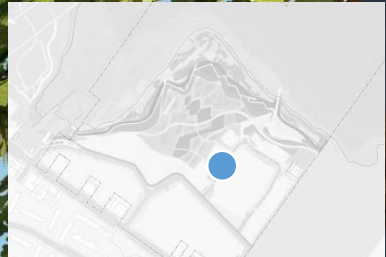
INDIA BASIN

Grove Cafe

Laneway & Grand Stairs



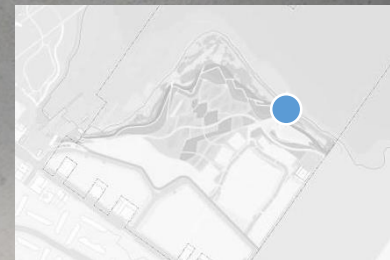




Shared Public Way



SNACK SHACK





INDIA BASIN



2035  
MHT

2020  
MHT

2017  
M

**BUILD:** | SOM | BIONIC | GEHL STUDIO | SHERWOOD

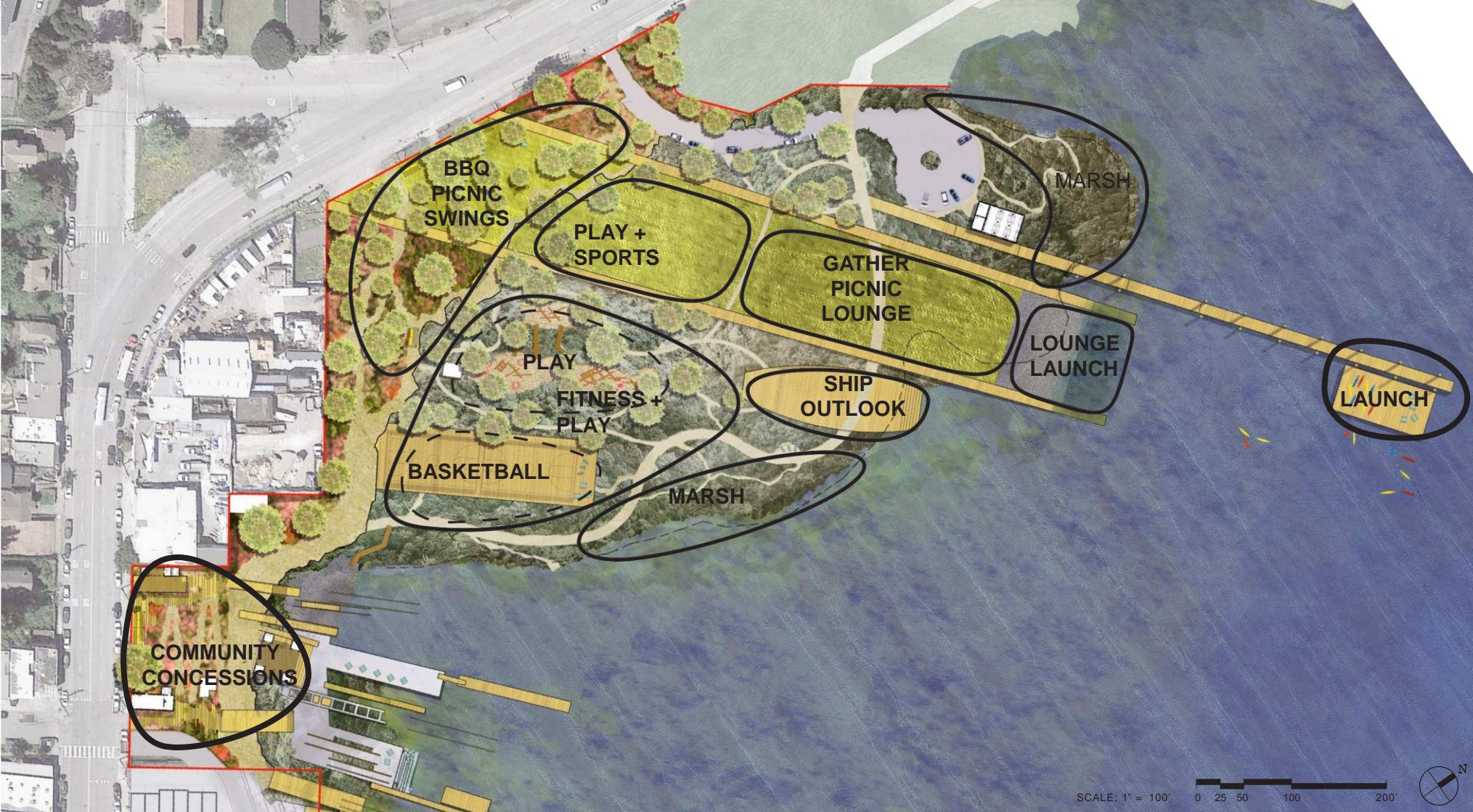


Living Shoreline

# AERIAL VIEW



# 900 INNES & INDIA BASIN SHORELINE PARK



900 Innes & India Basin Shoreline Park

# SCHEDULE

India Basin Entitlements Schedule	
<b>Jul-18</b>	Planning Commission Hearing
<b>Aug-18</b>	SFPUC Commission Hearing on DA
<b>Sep-18</b>	SFMTA Board Hearing on DA
<b>Sep-18</b>	Port Commission Hearing
<b>Sep-18</b>	Recreation and Park Commission Hearing
<b>Sep-18</b>	Board of Supervisors Land Use Committee Hearing
<b>Oct-18</b>	Board of Supervisors 2nd Reading
<b>Oct-18</b>	Mayor Signs Ordinances
<b>Oct-18</b>	State Lands Commission Hearing
<b>Oct-18</b>	Submit major permit applications to BCDC
<b>Jan-19</b>	Anticipated start of construction (grading and infrastructure)

An aerial, semi-transparent view of a coastal city, likely San Francisco, showing a large bay, a bridge, and various urban buildings. The image is overlaid with a large, bold, black text watermark.

[www.indiabasinsf.com](http://www.indiabasinsf.com)