



Leveraging Collaboration to End Domestic Violence

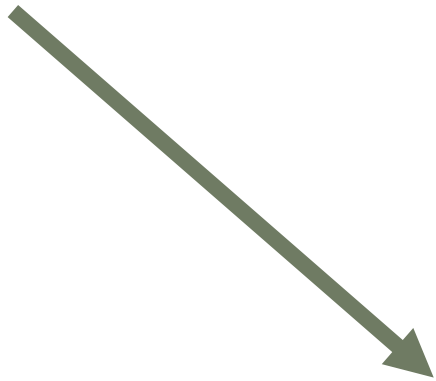
ELISE HANSELL, POLICY & GRANTS MANAGER AND KYOKO PETERSON, POLICY & GRANTS ASSOCIATE



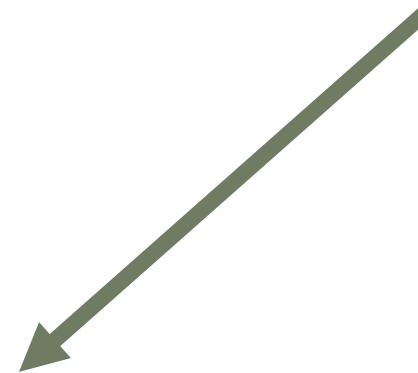
Blue Shield of California Foundation is an Independent Licensee of the Blue Shield Association

Blue Shield's Approach

**Multisector
Collaboration**



**Prevention
Approaches**



**Addressing
Domestic
Violence**

Community Determinants of Domestic Violence

Factor

Sector

Harmful norms and culture  ex. Education, Media

Economic insecurity  ex. Housing, Employment

Lack of social support  ex. Faith, Recreation

Our Collaborative



BAYCAT

EDUCATE • EMPLOY • ENTERTAIN

YCD

YOUNG COMMUNITY DEVELOPERS, INC

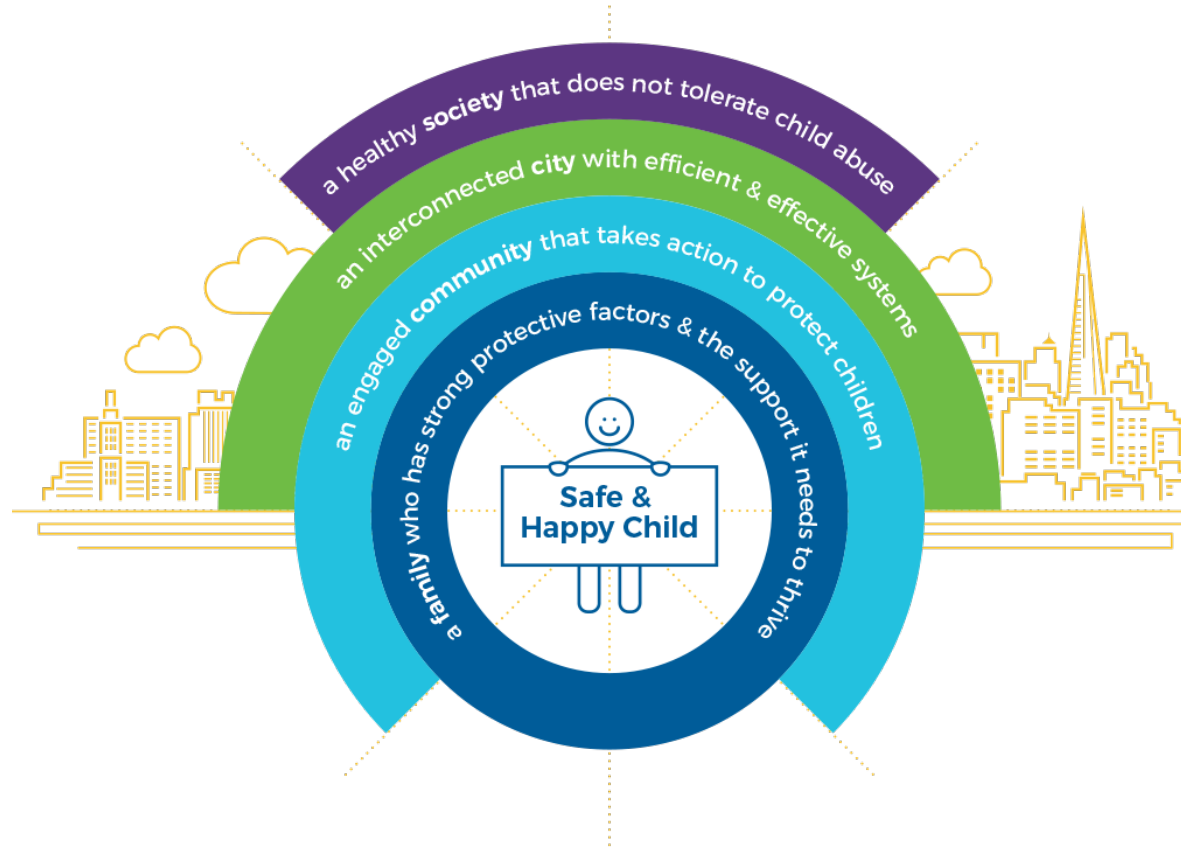


**SAN FRANCISCO
DEPARTMENT ON THE
STATUS OF WOMEN**

Young Community Developers



Safe & Sound



BAYCAT



 **BAYCAT**
EDUCATE • EMPLOY • ENTERTAIN

Our Approaches

**Focus Groups
with Youth**

**Coalition
Building**

**Video
Campaign**

**Healthy
Relationships
Curriculum**

Focus Groups



The Phoenix Project



COMMUNITY YOUTH CENTER



“I do think it's very important to know who you are and what you need independent of your relationship. You need to have a strong relationship with yourself before you can, before you can really be responsible in a relationship with another person.”

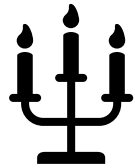
- LYRIC participant

BAYCAT Videos



Expanding Our Collaborative

Faith Community



**Domestic Violence
Service Provider**



Sports

Education



Philanthropy



Thank
you!

Questions?

Kyoko Peterson,

kyoko.peterson@sfgov.org

Elise Hansell,

Elise.Hansell@sfgov.org