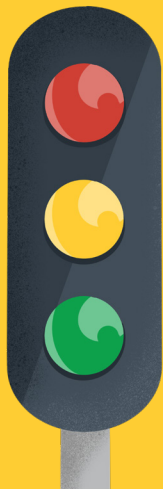


Did you miss  
your juvenile  
traffic court  
date because  
**you can't  
afford to pay  
your ticket?**



**If you were under 18 when you got a ticket, you may be able to resolve it through the Youth CONNECT program.**

The program will connect you with resources and services you may need, such as support with school, getting a job, case management, or other resources.

If you successfully complete the services, your ticket will be dismissed, and you will not need to pay the fine.

**If you'd like to resolve your ticket by receiving services, reach out to:**

Huckleberry Community Assessment  
and Resource Center  
44 Gough Street, Suite 104  
San Francisco, CA 94103  
415.437.2500  
9 a.m.–10 p.m., Monday–Friday

**Eligible citations are listed  
on the back of this flyer.**



Superior Court of California  
County of San Francisco



THE FINANCIAL  
JUSTICE PROJECT  
SAN FRANCISCO

## Eligible Infractions:

---

MP 13 Soliciting Pedestrians  
MP 21(a) Drinking in Public  
MP 22(a) Obstructing the Sidewalk  
MP 25(a) No Trespassing where Prohibited  
MP 33 Littering  
MP 35(a) Dumping garbage  
MP 49 Amplified sound/no permit  
MP 63(a) Obstruction of Sidewalk  
MP 96-98 Habitation of vehicle 10 p.m. - 6 a.m.  
MP 120-2(d)(1) Aggressive Soliciting  
MP 120-2(d)(2) Within 20ft of an ATM  
MP 120-2(d)(3) In Median or Soliciting a Vehicle  
MP 120-2(d)(4) In a Muni Parking Lot  
MP 153(a) Urinating/Defecating in Public  
MP 168 Sit/Lie Ordinance  
MP 630 Unauthorized Removal of Newspapers  
MP 864 Scalping/Peddling, w/in 12' of entryway  
MP 869 Selling without a permit  
HC 40 Dog to be controlled  
HC 41.12 Duties of Owners or Guardians  
HC 41.15 Dog License Requirements  
HC 41.5.1(a) Biting Dog  
BP25620(a) Open Container of Alcohol  
PK 3.0 Rules of Park Commission to be Obeyed  
PK 3.02 Signs to be obeyed  
PK 3.10 Peddling w/o a permit  
PK 3.12 Camping in the Park  
PK 3.13 Sleeping in Park (8 pm and 8 am)  
PK 3.15 Building Materials  
PK 4.01 Disorderly Conduct in the Park  
PK 4.02 No Swimming  
PK 4.04 Littering in park  
PK 4.05 Destruction of property  
PK 4.06 Removal of Trees, Wood, etc.  
PK 4.07 Penalties for violation of PK 4.06  
PK 4.08 Interfering with Rec. Park Employees  
PK 4.09 Certain Acts Prohibited:  
PK 4.10 Drinking where prohibited in Park  
PK4.11 Public Intoxication  
PK 4.12 Persons may be excluded under certain circumstances  
PK 4.13 Refusing to obey Police  
PK 4.14 Fighting, Disturbing Peace  
PK 4.17 Skateboard Safety Gear Required  
PK 5.02 No animals in playground  
VC22520.5 Soliciting on Freeway Ramp  
VC 21950(b) Pedestrian's Duties  
VC 21955 Jaywalking  
VC 21956(a) Walking  
PC374.3(a) Illegal Waste Dumping/Disposal  
PC 602.8(a) Trespassing  
PC 640 (c ) Fare Evasion  
PC 640 (b) (1) Eating/drinking where prohibited  
PC 640 (c ) Smoking where prohibited  
PC 640 (d)(1) Disturbing others where prohibited  
PC 640 (d) (4) Blocking person where prohibited