

City and County of San Francisco



Juvenile Probation Department

Monthly Report for November 2011

Presented to the Juvenile Probation Commission

December 13th, 2011

William P. Siffermann
Chief Probation Officer

Prepared by Jose Luis Perla
Information Technology Director
(415) 753-7686
jose.perla@sfgov.org

Table of Contents

Section I Summary Reports

Juvenile Hall, Log Cabin Ranch Summary Statistics	1
Probation Services Summary and California Youth Authority Statistics	2
Active Cases by Units	3

Section II Current Month General Detail

Probation Referrals, Juvenile Admissions And Average Daily Population	4
Juvenile Hall Admissions and Average Daily Population	5
Commitments to out-of-home placement	6
Commitments to California Youth Authority	7
Log Cabin Ranch Admissions and Average Daily Population	8
Probation Referrals	9
Juvenile Hall And Log Cabin Ranch Incident Report	10
Bay Area Resident Juvenile Hall Comparison	11
Juvenile Hall Admissions	12
Juvenile Hall Detainees by Detention Reason	13
Juvenile Hall Average Daily Population by Rated Capacity	14
Juvenile Hall Average Length of Stay	15

Section III Demographics

Juvenile Hall Detainees by Sex and Race/Ethnic Origin	16
Juvenile Hall Detainees by Age	17
Juvenile Hall Detainees by Age and Sex	18
Juvenile Hall Detainees by Geographic Residence of Youth	19
Juvenile Hall Detainees by Race/Ethnic Origin and Sex	20

Section IV

Historical Information

2008-2010 Probation Referrals	21
2008-2010 Juvenile Hall Admissions	22
2008-2010 Juvenile Hall Average Daily Population	23

Section I

Summary Reports

Summary Report for the Month of November 2011

Juvenile Hall	<i>October 2010</i>	<i>October 2011</i>	<i>November 2010</i>	<i>November 2011</i>	<i>YTD 2010</i>	<i>YTD 2011</i>
Admissions	96	94	108	80	1244	1082
Average Daily Population	84	100	79	81	94	88
Average Length of Stay (Releases)	27.80	21.62	31.42	40.16	25.72	30.46
Average Length of Stay (In Custody)	68.30	69.15	53.29	61.71	58.90	55.14
Releases	107	111	101	87	1232	1092
Log Cabin Ranch						
Admissions:						
First Time Commitments	1	2	4	1	27	21
Recommitments	1	0	1	0	2	1
<i>Total</i>	2	2	5	1	29	22
Releases:						
Graduated	2	0	1	0	15	14
Escape	0	1	0	2	4	3
Other releases	1	0	1	1	7	12
<i>Total</i>	3	1	2	3	26	29
Average Daily Population	18	19	18	22	14	21

Summary Report for the Month of November 2011

Probation Services	<i>October 2011</i>	<i>November 2011</i>	<i>Year To Date 2011</i>
Probation Referrals	186	139	1932
Total Petitions including violation of probation	91	60	1018
Selected Court Dispositions:			
California Youth Authority	0	0	1
Log Cabin Ranch	3	0	23
Out of Home Placement	9	6	131
Ward Probation	21	29	327
Non-Ward Probation (725a WI)	3	2	28
Informal Probation (654 WI)	5	8	120
Violation of Probation Petitions Filed	17	16	152
California Youth Authority Monthly Count San Francisco County Juvenile Court Cases November 30 th , 2011			
Category	Institutions	Parole	
Males			
White	0	1	
Hispanic	0	0	
African American	5	2	
Asian	0	0	
Native American	0	0	
Filipino	0	0	
Pacific Islander	0	1	
Other	0	0	
Total	5	4	
Females			
White	0	0	
Hispanic	0	0	
African American	0	0	
Asian	0	0	
Native American	0	0	
Filipino	0	0	
Pacific Islander	0	0	
Other	0	0	
Total	0	0	
Grand Total	5	4	

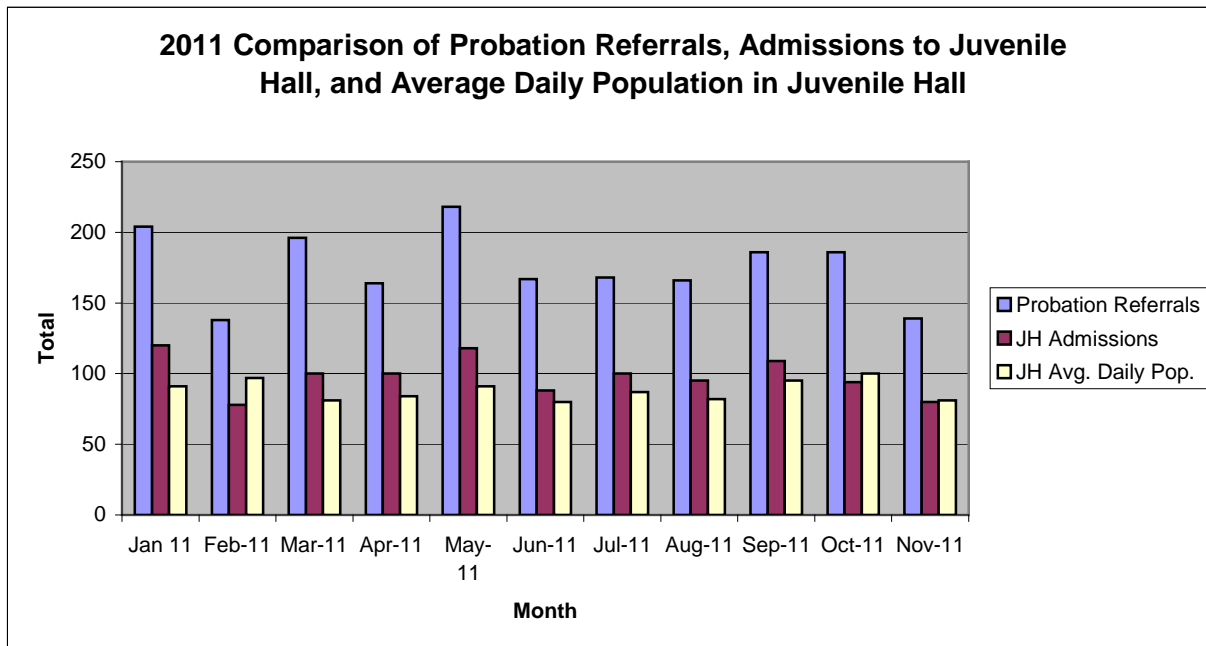
Summary Report for the Month of November 2011

Probation Services			
Active Cases by Units	October 2011	November 2011	November Average # Youth by PO
CARC	199	198	198
Intake Green (Custody Screening Investigation)	96	97	12
Intake Gold (Probation Services 1)	157	155	22
FITS (Probation Services 2)	185	188	18
Serious Offenders (Probation Services 3)	201	205	20
Private Placement (Probation Services 4)	175	175	21
Special Services	3	3	3
<i>Total</i>	1,016	1,021	42
Total Active Intake Cases	467	460	
Total Probation/Supervision Cases	549	561	

Section II
Current Month
General Detail

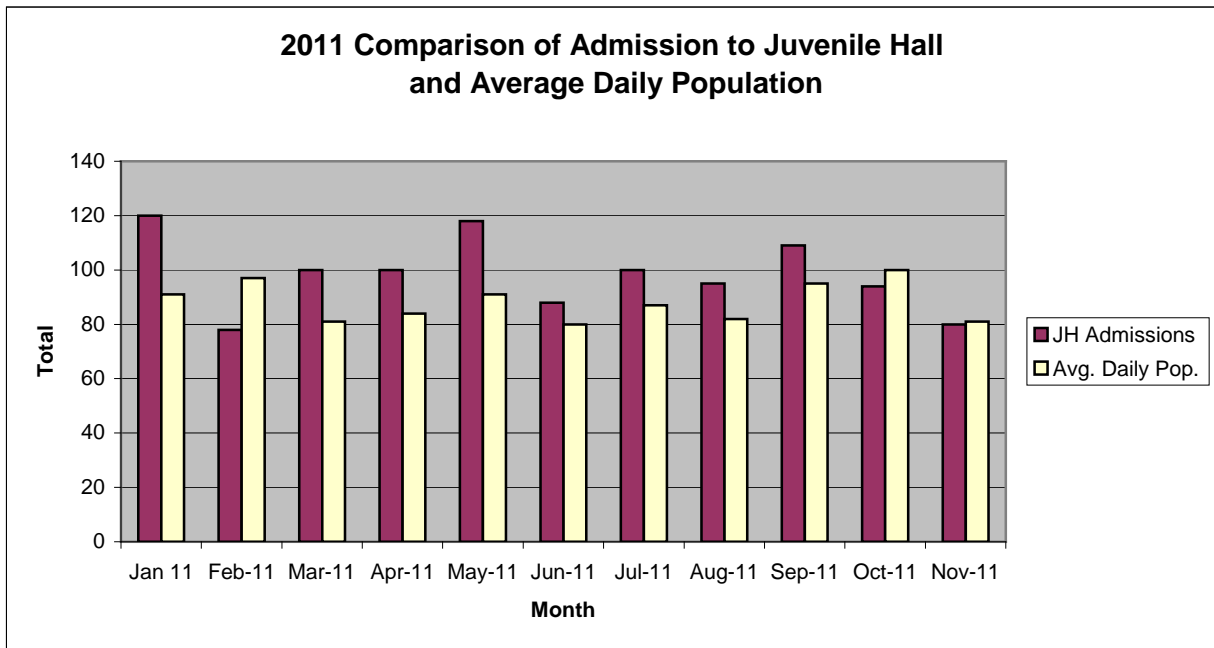
San Francisco Juvenile Probation Department

	Jan 11	Feb-11	Mar-11	Apr-11	May-11	Jun-11	Jul-11	Aug-11	Sep-11	Oct-11	Nov-11	Dec-11
Probation Referrals	204	138	196	164	218	167	168	166	186	186	139	
JH Admissions	120	78	100	100	118	88	100	95	109	94	80	
JH Avg. Daily Pop.	91	97	81	84	91	80	87	82	95	100	81	



San Francisco Juvenile Probation Department

	Jan 11	Feb-11	Mar-11	Apr-11	May-11	Jun-11	Jul-11	Aug-11	Sep-11	Oct-11	Nov-11	Dec-11
JH Admissions	120	78	100	100	118	88	100	95	109	94	80	
Avg. Daily Pop.	91	97	81	84	91	80	87	82	95	100	81	

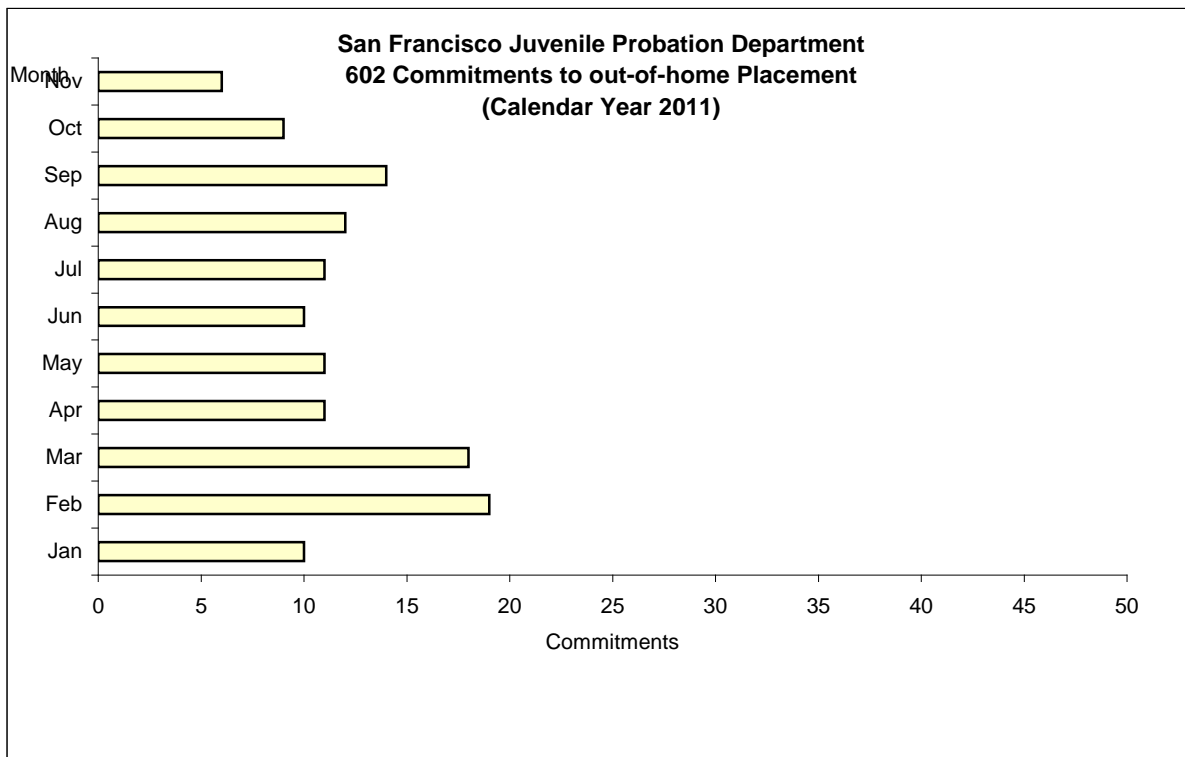


Out-of-Home Placement¹

Commitments of 602's

Calendar Year 2011

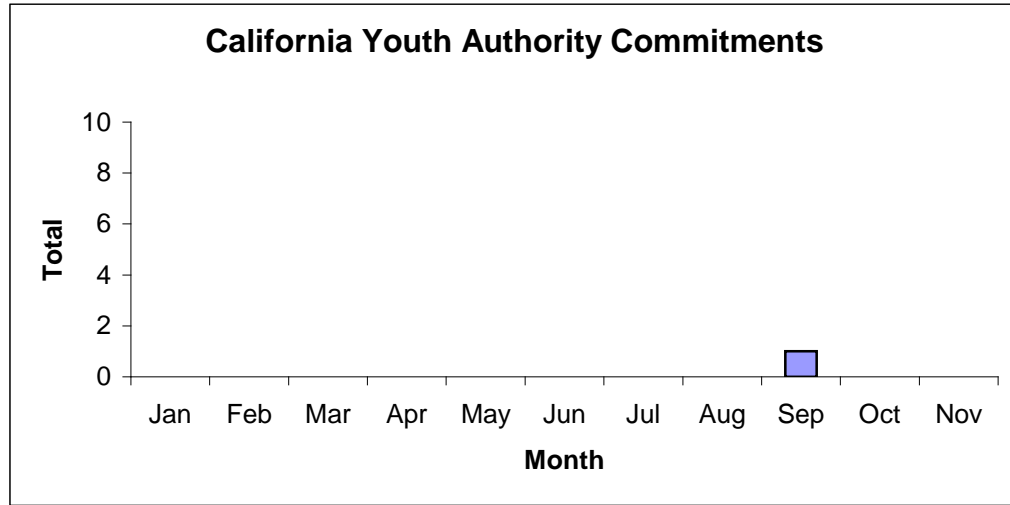
Commitments	Jan	Feb	Mar	Apr	May	Jun	Jul	Aug	Sep	Oct	Nov	Dec	Total
2011	10	19	18	11	11	10	11	12	14	9	6		131



¹ This report is based on 602 Commitments to out-of-home placements. If there is a 601 commitment, it will show as a footnote here. Figures are regularly updated to include reports from previous reporting periods.

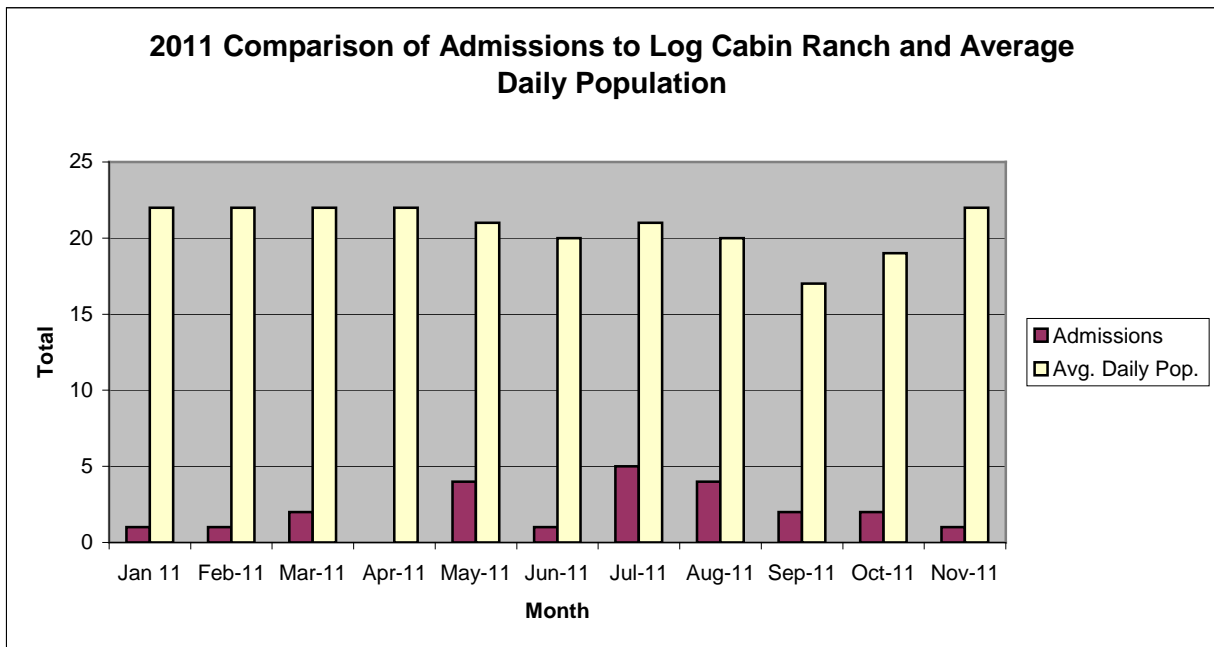
California Youth Authority
Commitments
(Calendar Year 2011)

Commitments	Jan	Feb	Mar	Apr	May	Jun	Jul	Aug	Sep	Oct	Nov	Dec	Total
2011	0	0	0	0	0	0	0	0	1	0	0		1



San Francisco Juvenile Probation Department

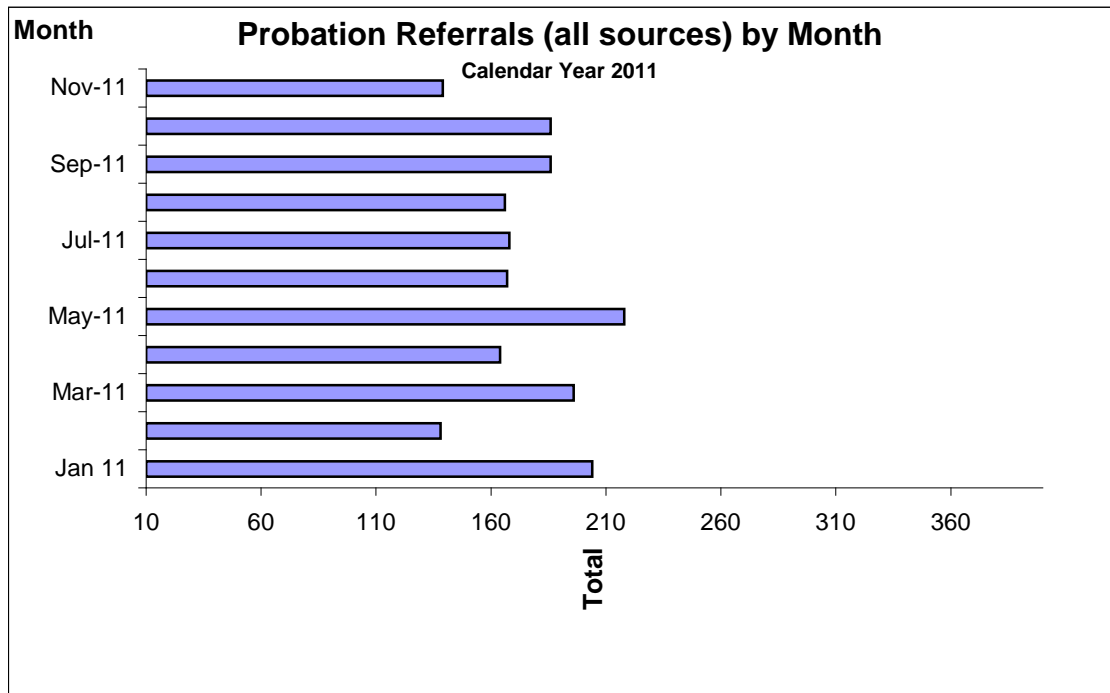
	Jan 11	Feb-11	Mar-11	Apr-11	May-11	Jun-11	Jul-11	Aug-11	Sep-11	Oct-11	Nov-11	Dec-11
Admissions	1	1	2	0	4	1	5	4	2	2	1	
Avg. Daily Pop.	22	22	22	22	21	20	21	20	17	19	22	



Probation Referrals by Month Calendar Year 2011

Probation Referrals (all sources) by Month (602 W&I)

Jan 11	204
Feb-11	138
Mar-11	196
Apr-11	164
May-11	218
Jun-11	167
Jul-11	168
Aug-11	166
Sep-11	186
Oct-11	186
Nov-11	139
Dec-11	

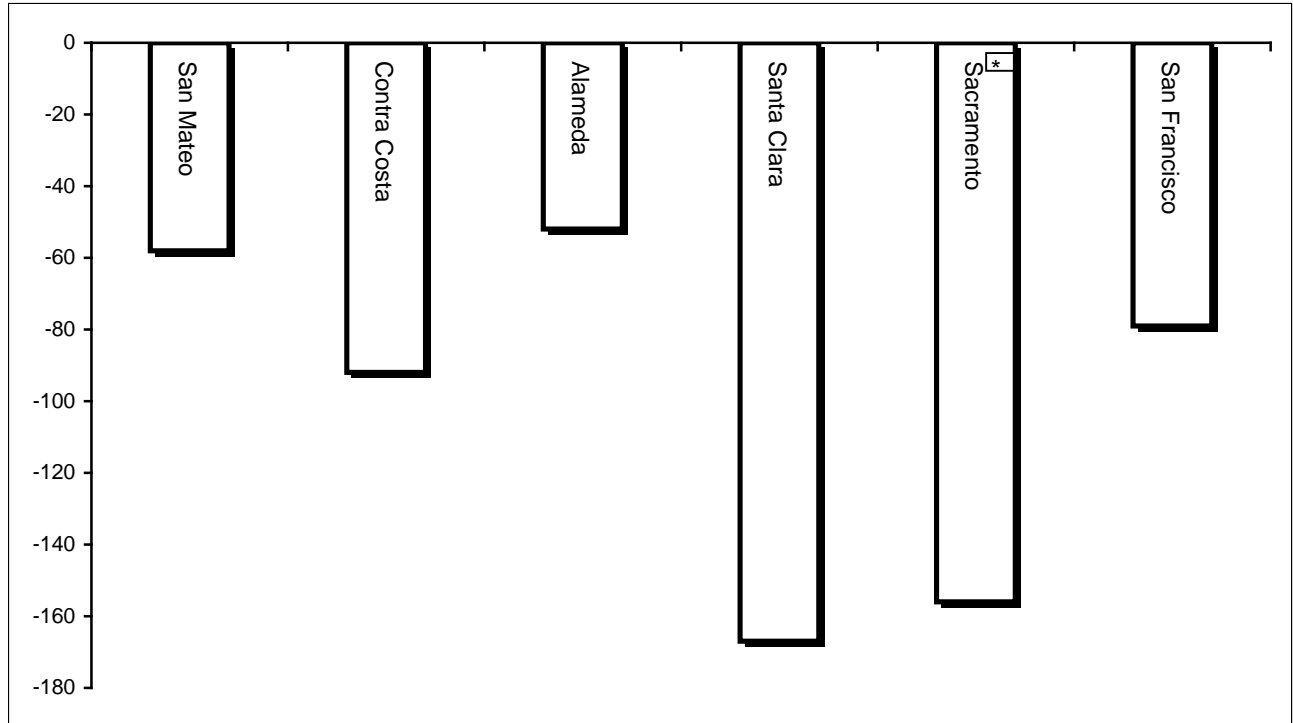


San Francisco Juvenile Probation Department
Monthly Incident Report Form
November 2011

Juvenile Hall	Assault on Staff	Fight	Attempted Escape	Fire	Attempted Suicide	Serious Contraband (Weapon illegal drug)	Use of Restraints	Self-Inflicted Injury	Assault on Staff with Injury	Battery Youth on Youth
	0	3	0	0	0		0	0	0	0
	Escape	Death	Suicide	Property Damage	Use of Force	Contraband				
	0	0	0	0	2	1				
Log Cabin Ranch	Battery on Staff	Injury to Staff due to Restraint of Minor	Fight	Battery Youth on Youth	Attempted Escape	AWOL	Attempted Suicide	Serious Contraband	Battery on Staff with Injury	Fire
	0	0	0	0	0	0	0	0	0	0
	Fight With Injury	Battery Youth on Youth with Injury	Escape	Death	Suicide	Major Property Destruction				
	0	0	0	0	0	0				

Bay Area Resident Juvenile Hall Comparison Over/Under Capacity

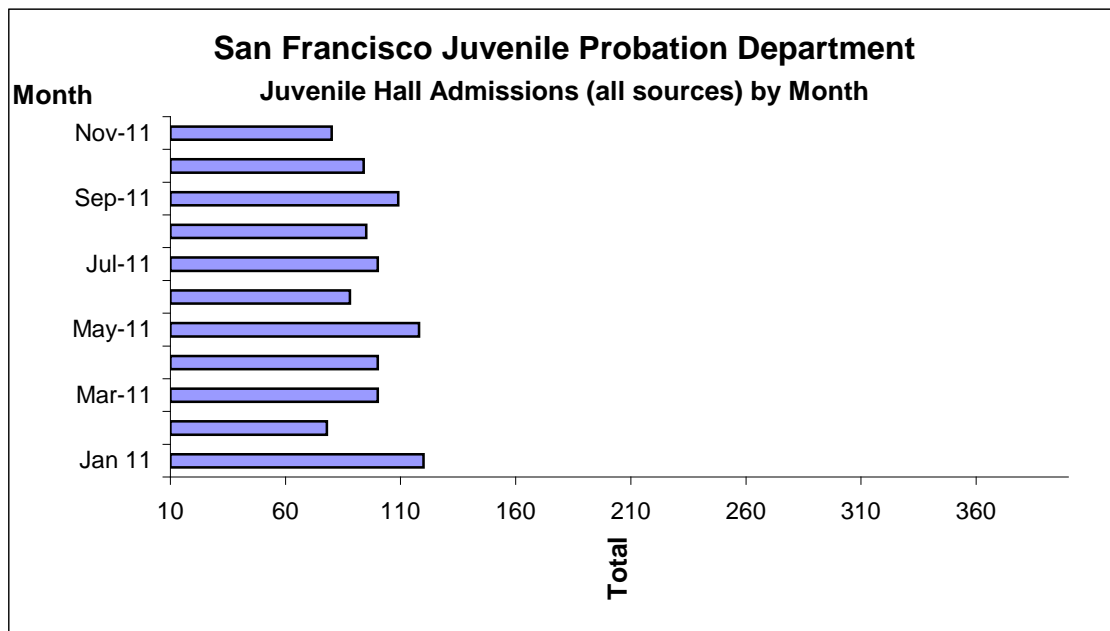
December 1st, 2011



	Rated Capacity	Actual	Over/Under Capacity
San Mateo	180	122	-58
Contra Costa	240	148	-92
Alameda	280	228	-52
Santa Clara	360	193	-167
Sacramento	308	152	-156
San Francisco	150	71	-79

Juvenile Hall Admissions by Month Calendar Year 2011

Jan 11	120
Feb-11	78
Mar-11	100
Apr-11	100
May-11	118
Jun-11	88
Jul-11	100
Aug-11	95
Sep-11	109
Oct-11	94
Nov-11	80
Dec-11	

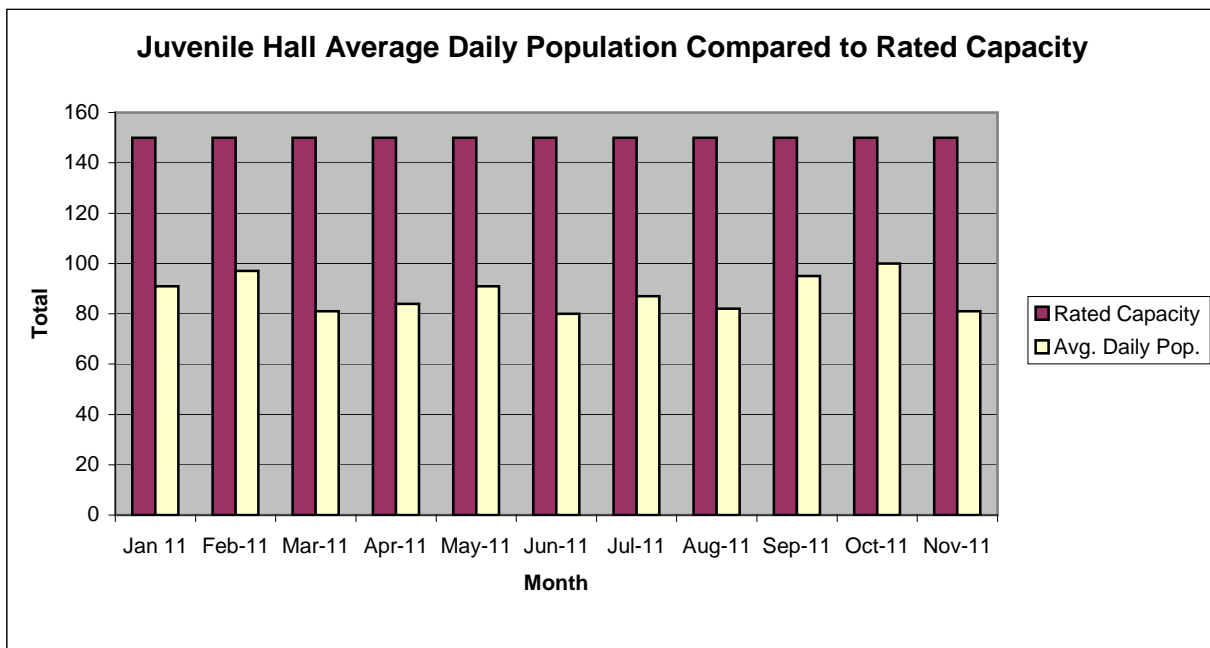


Characteristics of Juvenile Hall Detainees on November 30th, 2011

Detention Reason	Offense Code	MF*	Count	%
MURDER	187 (A) PC	F	2	2.60%
CONTINUOUS SEXUAL ABUSE OF CHILD	288.5 PC	F	1	1.30%
ATTEMPTED MURDER	664 /187 (A) PC	F	7	9.09%
KIDNAPPING	207 (A) PC	F	2	2.60%
ROBBERY	211 PC	F	13	16.88%
TRANSPORT/SELL NARCOTIC/CONTROLLED SUBSTANCE	11352 (A) HS	F	2	2.60%
ROBBERY:SECOND DEGREE	212.5(C) PC	F	1	1.30%
ASSAULT WITH CAUSTIC CHEMICAL/ETC	244 PC	F	1	1.30%
ASSAULT WITH FIREARM ON PERSON	245 (A)(2) PC	F	2	2.60%
ASSAULT WITH A DEADLY WEAPON:GREAT BODILY INJURY LIKELY	245 PC	F	1	1.30%
ASSAULT:DEADLY WEAPON OR FORCE:POSSIBLE GREAT BODILY INJ	245 (A) PC	F	1	1.30%
FORCE OR ADW NOT FIREARM:GBI LIKELY	245 (A)(1) PC	F	7	9.09%
BATTERY W/SERIOUS BODILY INJURY	243 (D) PC	F	1	1.30%
ATTEMPTED ROBBERY	664 /211 PC	F	1	1.30%
CARRY CONCEALED STOLEN WEAPON	12025 (B)(2) PC	F	1	1.30%
BURGLARY:SECOND DEGREE	459 PC	F	2	2.60%
RECEIVE/ETC KNOWN STOLEN PROPERTY	496 (A) PC	F	1	1.30%
POSSESS WEAPON/ETC AT SCHOOL	626.10(A) PC	F	1	1.30%
OBSTRUCT/RESIST/ETC PUBLIC/PEACE OFFICER/EMERGENCY MED TECH	148 (A)(1) PC	M	1	1.30%
BURGLARY	459 PC	M	1	1.30%
BATTERY	242 PC	M	1	1.30%
FAIL TO OBEY ORDER OF JUVENILE COURT 602 WI	777 (A)(2) WI	M	4	5.19%
CHANGE OF PLACEMENT/PLACEMENT FAILURE	737 WI	M	5	6.49%
VIOLATION(S) OF HOME SUPERVISION CONDITION	628.1 WI	M	1	1.30%
BENCH WARRANT	BENCH WARRANT		5	6.49%
ARREST WARRANT	WRNT602		8	10.39%
COURT ORDER	CTORD 602 XX		4	5.19%
*F=Felony; M=Misdemeanor		Total	77	100.00%

San Francisco Juvenile Probation Department

	Jan 11	Feb-11	Mar-11	Apr-11	May-11	Jun-11	Jul-11	Aug-11	Sep-11	Oct-11	Nov-11	Dec-11
Rated Capacity	150	150	150	150	150	150	150	150	150	150	150	150
Avg. Daily Pop.	91	97	81	84	91	80	87	82	95	100	81	



Juvenile Hall Average Length of Stay

For the Month of November 2011

¹Released

Range of Days	<i>1-10 days</i>	<i>11-20 days</i>	<i>21-30 days</i>	<i>30 or more days</i>	Total
# of Youth Released	40	10	5	32	87
% of Population	45.98%	11.49%	5.75%	36.78%	100%
# of Days	200	154	124	3016	3494
% of Total Days	5.72%	4.41%	3.55%	86.32%	100%
Average Length of Stay	5.00	15.40	24.80	94.25	40.16

²In Custody

Range of Days	<i>1-10 days</i>	<i>11-20 days</i>	<i>21-30 days</i>	<i>30 or more days</i>	Total
# of Youth Detained	15	18	8	36	77
% of Population	19.48%	23.38%	10.39%	46.75%	100%
# of Days	82	246	208	4216	4752
% of Total Days	1.73%	5.18%	4.38%	88.72%	100%
Average Length of Stay	5.47	13.67	26.00	117.11	61.71

Notes: Less than one day of stay is calculated as one day.

¹Length of stay is calculated according to release date for those who are released.

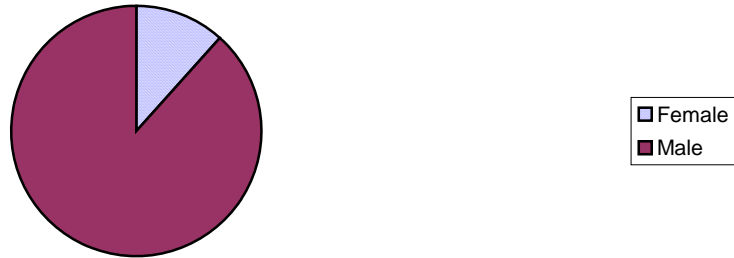
²For those still in custody, length of stay is calculated at the last day of the month.

Section III

Demographics

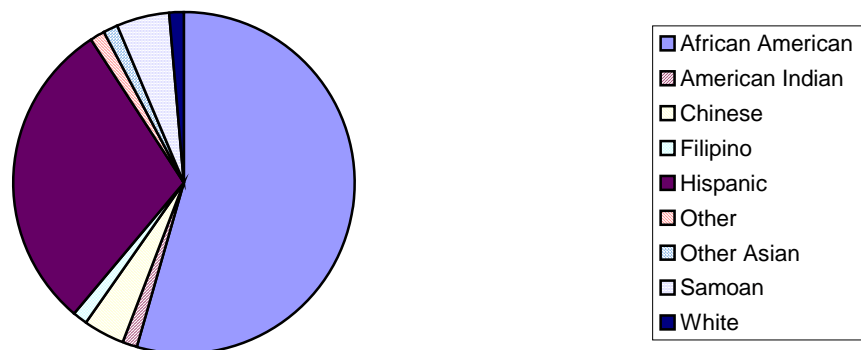
Gender	Frequency	Percent
Female	9	11.69%
Male	68	88.31%
Total	77	100.00%

**Demographic Characteristics
Of Juvenile Hall Detainees on 11/30/11 by Gender**



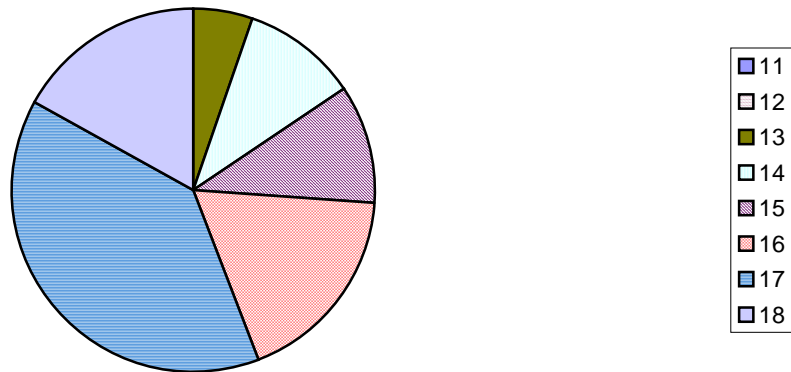
Race/Ethnic Origin	Frequency	Percent
African American	42	54.55%
American Indian	1	1.30%
Chinese	3	3.90%
Filipino	1	1.30%
Hispanic	23	29.87%
Other	1	1.30%
Other Asian	1	1.30%
Samoan	4	5.19%
White	1	1.30%
Total	77	100.00%

**Demographic Characteristics of Juvenile Hall Detainees on
11/30/11 by Race**



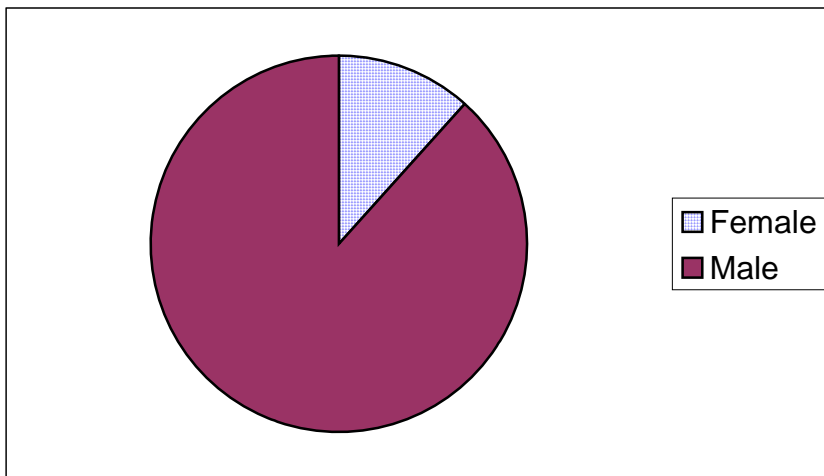
Age	Frequency	Percent
11	0	0.00%
12	0	0.00%
13	4	5.19%
14	8	10.39%
15	8	10.39%
16	14	18.18%
17	30	38.96%
18	13	16.88%
Total	77	100.00%

**Demographic Characteristics of Juvenile Hall
Detainees on 11/30/11 by Age**



Demographic Characteristics of Juvenile Hall Detainees
on 11/30/2011
Age by Gender

Age	Female	Male	Total	
11	0	0	0	0.00%
12	0	0	0	0.00%
13	0	4	4	5.19%
14	3	5	8	10.39%
15	3	5	8	10.39%
16	1	13	14	18.18%
17	0	30	30	38.96%
18 and over	2	11	13	16.88%
Total	9	68	77	100.00%
	11.69%	88.31%	100.00%	



Demographic Characteristics
Of Juvenile Hall Detainees on November 30th, 2011

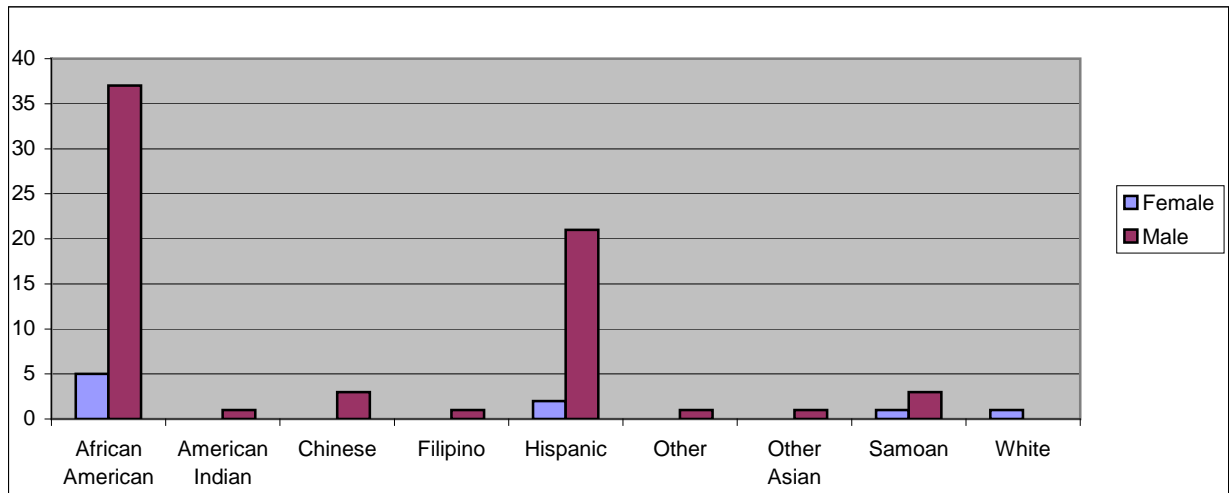
Geographic Residence of Youth	Count	%
Richmond	2	2.6%
Marina	0	0.0%
North of Market/Downtown	1	1.3%
Treasure Island/Yerba Buena Island	0	0.0%
Western Addition	7	9.1%
South of Market/Tenderloin	1	1.3%
Sunset	1	1.3%
Haight Ashbury/Castro/Upper Market	1	1.3%
Inner Mission	9	11.7%
Potrero	2	2.6%
Parkside	2	2.6%
Ingleside (West of Twin Peaks)	4	5.2%
Outer Mission	14	18.2%
Bayview	18	23.4%
Non-San Francisco and Unavailable	15	19.5%
Total	77	100.0%

Non-San Francisco and Unavailable	Count	%
Antioch	1	6.7%
Daly City	1	6.7%
Oakland	3	20.0%
Pacifica	1	6.7%
Redwood City	1	6.7%
South San Francisco	1	6.7%
Unavailable	7	46.7%
Total	15	100.0%

Demographic Characteristics
Of Juvenile Hall Detainees on November 30th, 2011

Race/Ethnic Origin by Gender

Race/Ethnicity	Female	Male	Total	%
African American	5	37	42	54.5%
American Indian	0	1	1	1.3%
Chinese	0	3	3	3.9%
Filipino	0	1	1	1.3%
Hispanic	2	21	23	29.9%
Other	0	1	1	1.3%
Other Asian	0	1	1	1.3%
Samoan	1	3	4	5.2%
White	1	0	1	1.3%
Total	9	68	77	100.0%

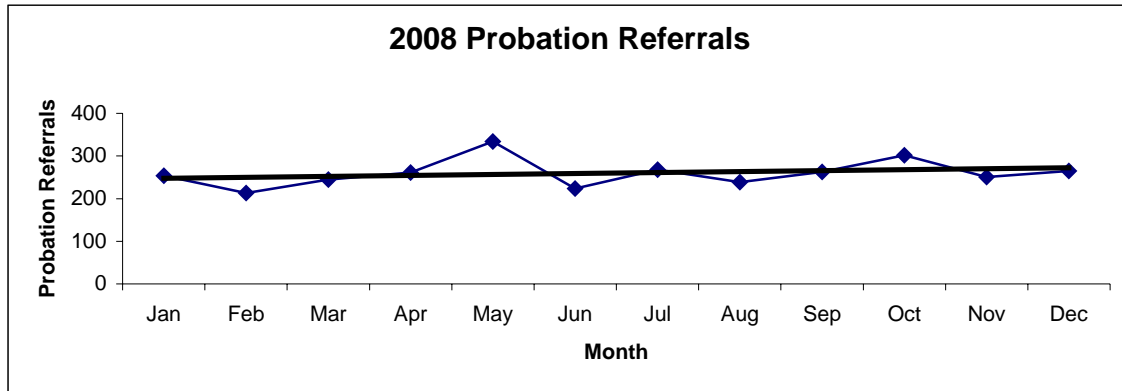


Section IV

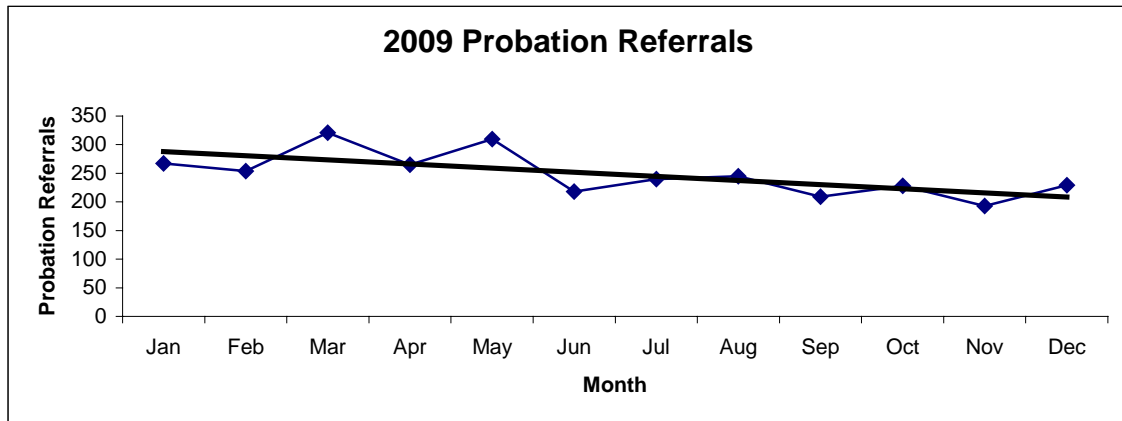
Historical Information

San Francisco Juvenile Probation Department
Probation Referrals (all sources) By Month
 (2008-2010)

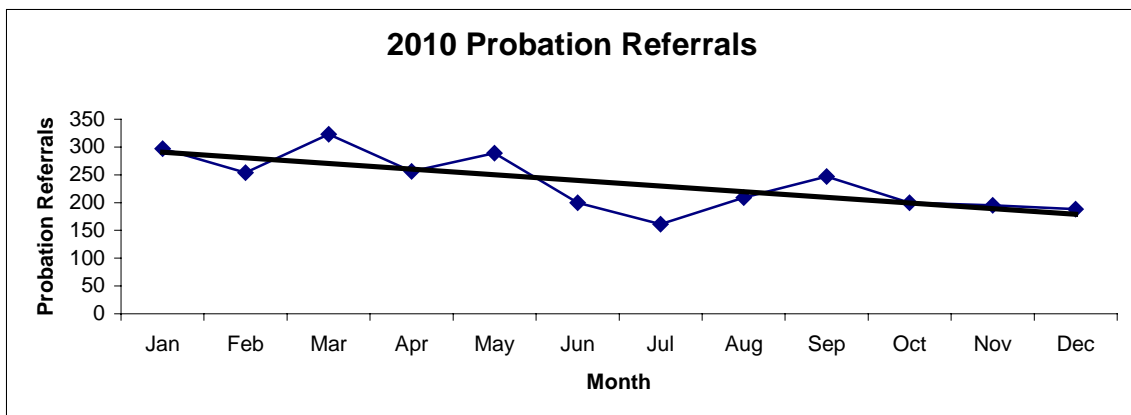
2008 Probation Referrals	Jan	Feb	Mar	Apr	May	Jun	Jul	Aug	Sep	Oct	Nov	Dec	Total
	254	213	245	261	334	224	268	239	263	302	251	265	3119



2009 Probation Referrals	Jan	Feb	Mar	Apr	May	Jun	Jul	Aug	Sep	Oct	Nov	Dec	Total
	267	254	321	265	310	218	240	245	209	228	193	229	2979

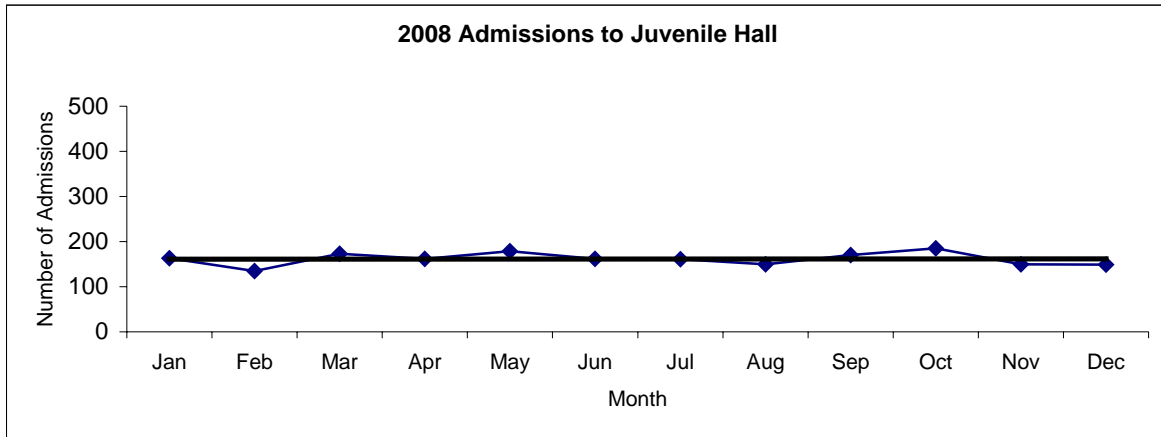


2010 Probation Referrals	Jan	Feb	Mar	Apr	May	Jun	Jul	Aug	Sep	Oct	Nov	Dec	Total
	297	254	323	256	289	200	161	209	247	200	195	188	2819

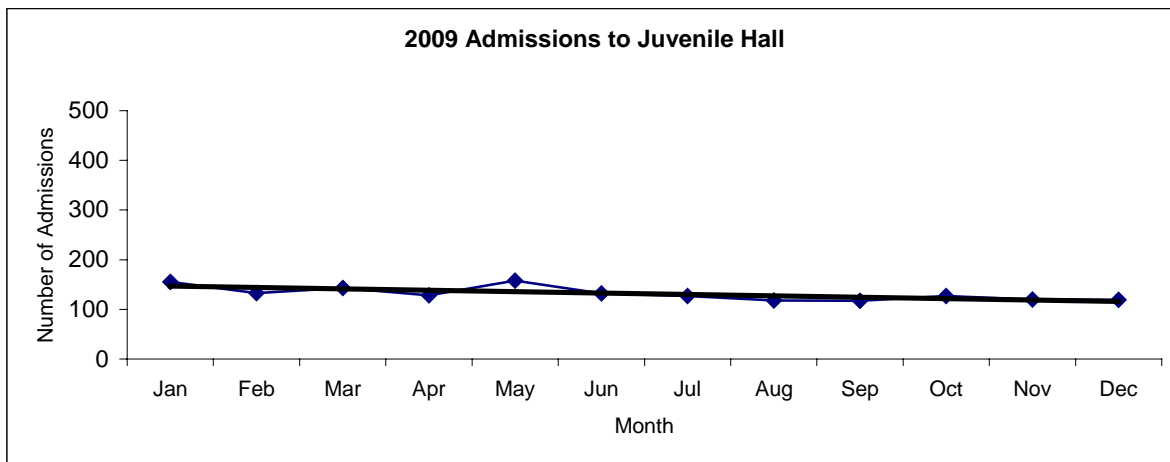


San Francisco Juvenile Probation
Juvenile Hall Admissions By Month
(2008-2010)

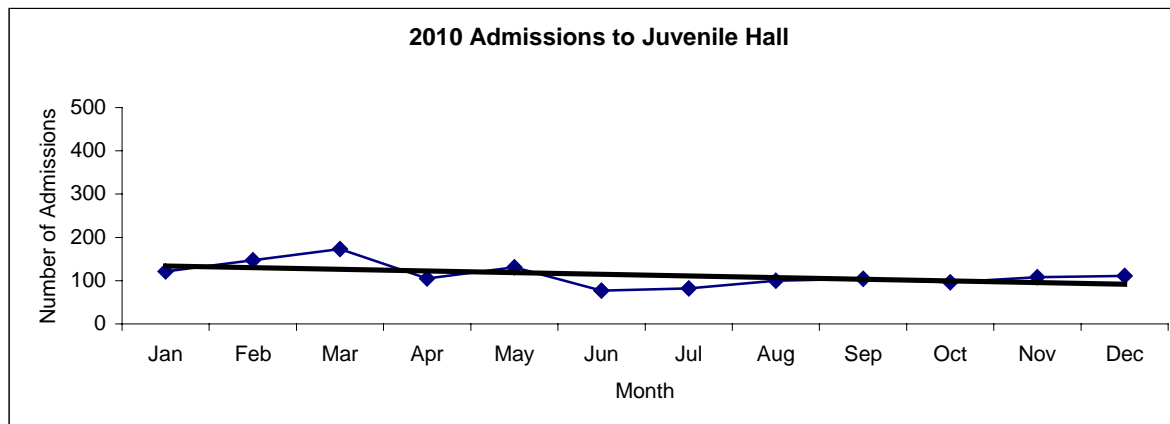
2008 Admissions	Jan	Feb	Mar	Apr	May	Jun	Jul	Aug	Sep	Oct	Nov	Dec	Total
	163	135	173	162	179	162	161	150	170	185	150	149	1939



2009 Admissions	Jan	Feb	Mar	Apr	May	Jun	Jul	Aug	Sep	Oct	Nov	Dec	Total
	155	133	143	128	158	132	127	118	117	127	120	119	1577

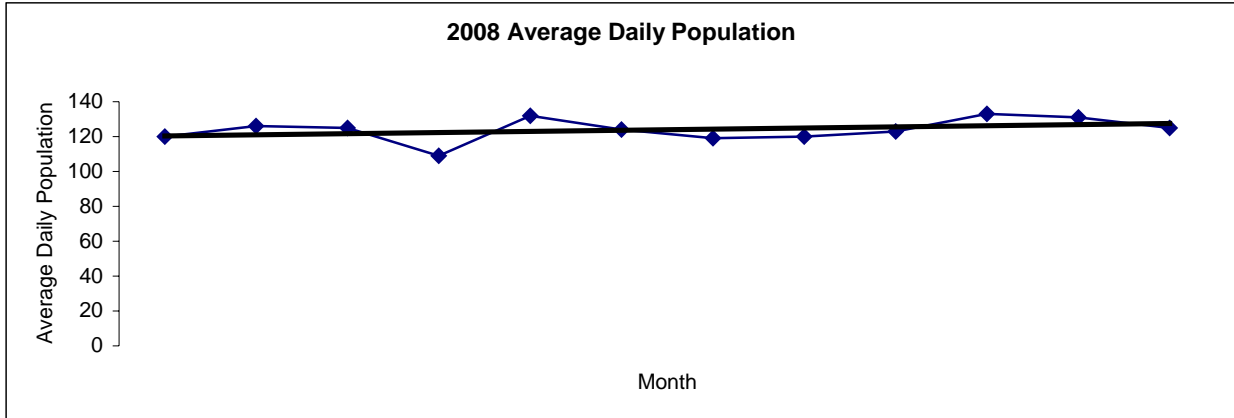


2010 Admissions	Jan	Feb	Mar	Apr	May	Jun	Jul	Aug	Sep	Oct	Nov	Dec	Total
	121	147	173	105	131	77	82	100	104	96	108	111	1355

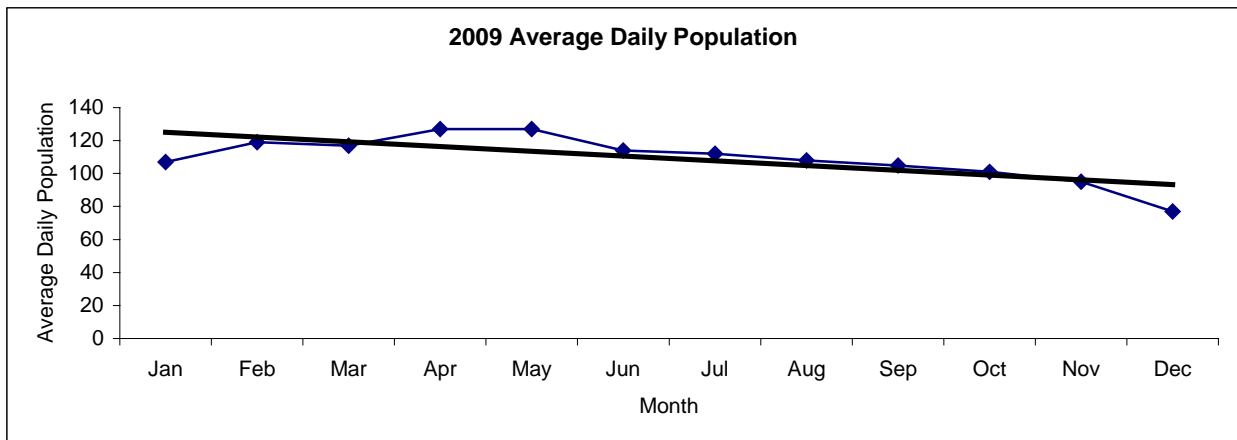


San Francisco Juvenile Probation
Juvenile Hall Average Daily Population By Month
 (2008-2010)

2008 Avg. Daily Pop.	Jan	Feb	Mar	Apr	May	Jun	Jul	Aug	Sep	Oct	Nov	Dec	Total
	120	126	125	109	132	124	119	120	123	133	131	125	124



2009 Avg. Daily Pop.	Jan	Feb	Mar	Apr	May	Jun	Jul	Aug	Sep	Oct	Nov	Dec	Total
	107	119	117	127	127	114	112	108	105	101	95	77	109



2010 Avg. Daily Pop.	Jan	Feb	Mar	Apr	May	Jun	Jul	Aug	Sep	Oct	Nov	Dec	Total
	85	104	110	107	99	97	90	88	90	84	79	92	94

