

# San Francisco Juvenile Probation Department

## **2009 Statistical Report**

1/1/2009 to 12/31/009

**William P. Siffermann**  
Chief Probation Officer

Created by  
Jose Luis Perla  
IT Director  
Information Technology Unit  
375 Woodside Avenue  
San Francisco, CA 94127  
(415) 753-7686  
[jose.perla@sfgov.org](mailto:jose.perla@sfgov.org)

6/1/2010



**City and County of San Francisco  
Juvenile Probation Department**

**William P. Siffermann**  
Chief Probation Officer

375 Woodside Avenue  
San Francisco, CA 94127  
(415) 753-7800

June, 2010

Greetings from the San Francisco Juvenile Probation Department!

On behalf of the entire San Francisco Juvenile Probation Department, I welcome your review of our **2009 Annual Report** prepared under the direction of our Information Technology Director, Jose Perla.

As in the past, our report portrays the composition of our assigned workload and reflects the dispositional outcomes for all the matters that the Juvenile Probation Department addressed during this past year. We have continued to include in our report, various presentations of aggregate data assembled on geographical maps arranged by zip codes, supervisorial districts and police districts. The statistical breakdown at the various case decision points provides you with an opportunity to see the variety of tracks and dispositions utilized within the San Francisco juvenile justice system.

We welcome any suggestions you may have to improve our delivery of probation services, as well as any ideas you might share with us on ways we can improve the utility of future Annual Reports.

Thanks again for your interest in the San Francisco Juvenile Probation Department. While the aggregate numbers presented in this report help describe the landscape of our workload, please be assured that our staff in every division are committed to provide meaningful interventions with youth and families we serve that develop pro-social competencies in the context of enhanced public safety and productive community membership.

Please know that we are always open to your suggestions on ways we can improve those efforts so that the positive outcomes for the youth and our community are enhanced.

We remain grateful for your interest and support.

Sincerely,

A handwritten signature in black ink that reads "William P. Siffermann". The signature is fluid and cursive, with the first name "William" being the most prominent.

William P. Siffermann  
Chief Probation Officer

WPS:lta

# Table of Contents

## Statistical Reports

Five-Year Statistical Summary All Juvenile Hall Bookings .....	1
Five-Year Statistical Summary Petition Outcome .....	2

### ***Juvenile Probation Referrals***

Unduplicated Count of Juvenile Probation Referrals by Gender, Race/Ethnic Origin, and Age .....	3
Unduplicated Count of Juvenile Probation Referrals by Geographical Residence of Youth – San Francisco Zip Code .....	4
Unduplicated Count of Juvenile Probation Referrals by Geographical Residence of Youth – Map of Supervisorial Districts Boundaries .....	5
Unduplicated Count of Juvenile Probation Referrals by Geographical Residence of Youth – Map of San Francisco Zip Code Boundaries .....	6
Duplicated Count of Juvenile Probation Referrals by Gender, Race/Ethnic Origin, and Age at Referral .....	7
Duplicated Count of Juvenile Probation Referrals for Criminal Offenses .....	8

### ***Juvenile Hall Bookings (Detentions)***

Unduplicated Count of Juvenile Hall Bookings for Criminal Offenses by Gender, Race/Ethnic Origin, and Age .....	9
Unduplicated Count of Juvenile Hall Bookings for Criminal Offenses by Geographical Residence of Youth – <i>Map of Supervisorial Districts Boundaries</i> .....	10
Unduplicated Count of Juvenile Hall Bookings for Criminal Offenses by Geographical Residence of Youth – <i>Map of San Francisco Zip Code Boundaries</i> .....	11
Unduplicated Count of Juvenile Hall Bookings for Criminal Offenses – Five-Year Comparison by Geographical Residence of Youth .....	12

Unduplicated Count of Juvenile Hall Bookings– Analysis of the Prior Arrests for Criminal Offenses of Youth Admitted to Detention ( <i>Line Chart</i> ) .....	13
Duplicated Count of Juvenile Hall Bookings for Criminal Offenses By Year 2000 – 2009 ( <i>Line Chart</i> ) .....	14
Duplicated Count of Juvenile Hall Bookings by Most to Least Serious Detention Reasons using Department of Justice Summary Code.....	15
Duplicated Count of Juvenile Hall Bookings for Criminal Offenses By Referral Source.....	16
Duplicated Count of Juvenile Hall Bookings for Criminal Offenses By FBI Part I and Part II Crimes .....	17
Duplicated Count of Juvenile Hall Bookings for Criminal Offenses By Gender, Crime Type and Offense Degree Level.....	18
Duplicated Count of Juvenile Hall Bookings for Criminal Offenses By Race/Ethnic Origin, Crime Type and Offense Degree Level.....	19

### ***Petitions Filed***

Duplicated Count of Petitions Filed by Most to Least Serious Petition Reasons using Department of Justice Summary Code .....	20
Duplicated Count of Petitions Filed for Criminal Offenses By Gender, Crime Type and Offense Degree Level.....	21
Duplicated Count of Petitions Filed for Criminal Offenses By Race/Ethnic Origin, Crime Type and Offense Degree Level.....	22

### ***Petitions Sustained***

Duplicated Count of Petitions Sustained by Most to Least Serious Petition Sustained using Department of Justice Summary Code.....	23
Duplicated Count of Petitions Sustained for Criminal Offenses By Gender, Crime Type and Offense Degree Level.....	24
Duplicated Count of Petitions Sustained for Criminal Offenses By Race/Ethnic Origin, Crime Type and Offense Degree Level.....	25

### ***Graphics***

2009 Juvenile Hall Average Daily Population .....	26
2009 Juvenile Hall Average Length of Stay .....	27
2009 Juvenile Court Processing of Law Violation Cases.....	28

### ***Juvenile Justice System Terms***

Juvenile Justice Terms .....	29
------------------------------	----

San Francisco Juvenile Probation Department  
All Juvenile Hall Bookings  
Statistical Summary  
2005-2009

						2005-2009
	Year	Year	Year	Year	Year	Percent
	2005	2006	2007	2008	2009	Change
All Referrals*	3013	3290	3131	3446	3296	9.4%
Petitions Filed	1527	1673	1500	1607	1291	-15.5%
% Petitions Filed	50.7%	50.9%	47.9%	46.6%	39.2%	
<b><i>Referrals resulting in a booking</i></b>						
All Juvenile Hall Bookings	1838	2038	1871	1931	1569	-14.64%
Average Length of Stay	19	19	23	23	23	21.05%
Average Daily Population	100	106	119	124	109	9.00%
% of Referrals Detained	61.0%	61.9%	59.8%	56.0%	47.6%	

*\*Includes Court Orders, Violation of Probation, Home Detention Failures, Warrants, Transfers from other Counties, Citations, Certifications from Adult Court, Placement Failures, Log Cabin Medical plus all criminal offenses.*

2009 Referrals	Count	%
Citations	1515	45.96%
Bookings	1569	47.60%
Other	212	6.43%
Total All Referrals	3296	100.00%

Other Referrals	Count	%
777 WI Petition Filed	95	44.81%
871 WI Petition Filed	4	1.89%
602 WI Petition Filed	4	1.89%
Courtesy Supervision	2	0.94%
CYA Interstate Compact	1	0.47%
Transfer In From Other County	106	50.00%
<b>Total</b>	<b>212</b>	<b>100.00%</b>

San Francisco Juvenile Probation Department  
Statistical Summary  
2005-2009

						2005-2009
	Year	Year	Year	Year	Year	Percent
	2005	2006	2007	2008	2009	Change
All Referrals*	3013	3290	3131	3446	3296	9.4%
Petitions Filed	1527	1673	1500	1607	1291	-15.5%
% Petitions Filed	50.7%	50.9%	47.9%	46.6%	39.2%	
<b>Outcome</b>						
Log Cabin Ranch School	36	47	37	21	22	-38.89%
California Youth Authority	9	2	0	2	3	-66.67%
Ward Probation	486	558	474	446	412	-15.23%
Non-Ward Probation (725a WI)	52	71	49	53	60	15.38%
Out-of-home Placement	221	198	241	218	155	-29.86%
Informal Probation (654 WI)	127	187	161	226	173	36.22%
Remand to Adult Court (707)	1	0	11	5	4	
Transfer Out to Another County	164	202	216	171	159	-3.05%
Petition Sustained	1071	1202	1147	1100	936	-12.61%
Petition Dismissed	258	290	273	292	255	-1.16%

*\*Includes Court Orders, Violation of Probation, Home Detention Failures, Warrants, Transfers from other Counties, Citations, Certifications from Adult Court, Placement Failures, Log Cabin Medical plus all criminal offenses.*

Calendar Year 2009  
San Francisco Juvenile Probation Department  
Unduplicated Count of Juvenile Probation Referrals  
N=2,146

Gender	Count	%
FEMALE	694	32.34%
MALE	1452	67.66%
<b>Total</b>	<b>2,146</b>	<b>100.00%</b>

Race/Ethnic Origin	Count	%
AFRICAN AMERICAN	982	45.76%
AMERICAN INDIAN	3	0.14%
CAMBODIAN	5	0.23%
CHINESE	64	2.98%
FILIPINO	29	1.35%
GUAMANIAN	1	0.05%
HAWAIIAN	1	0.05%
HISPANIC	528	24.60%
JAPANESE	1	0.05%
KOREAN	5	0.23%
OTHER	85	3.96%
OTHER ASIAN	94	4.38%
PACIFIC ISLANDER	8	0.37%
SAMOAN	48	2.24%
UNKNOWN	27	1.26%
VIETNAMESE	9	0.42%
WHITE	256	11.93%
<b>Total</b>	<b>2,146</b>	<b>100.00%</b>

Age on 5/13/2010	Count	%
11	12	0.56%
12	19	0.89%
13	51	2.38%
14	138	6.43%
15	270	12.58%
16	419	19.52%
17	512	23.86%
18	614	28.61%
Over 18	111	5.17%
<b>Total</b>	<b>2,146</b>	<b>100.00%</b>

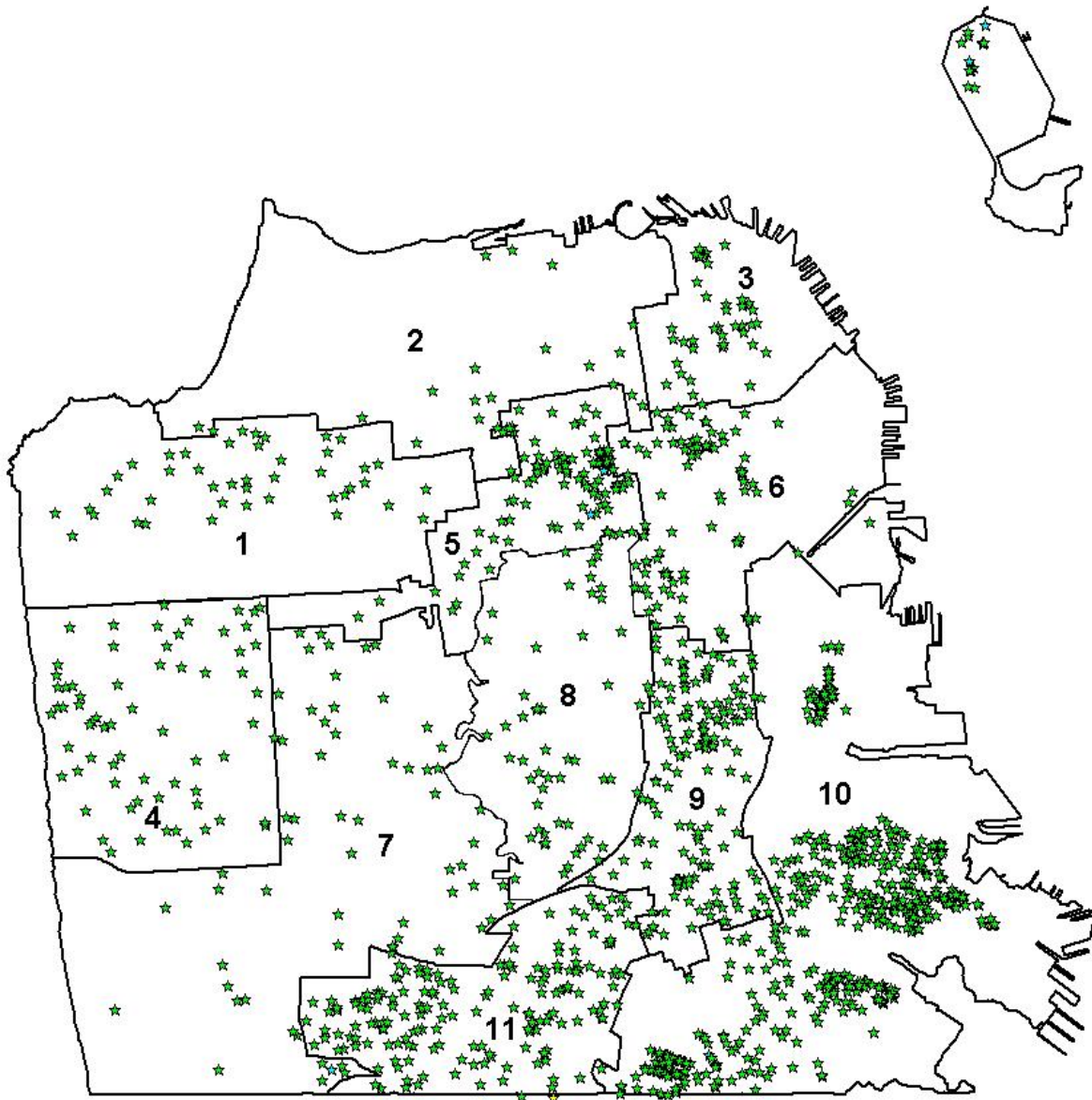


Calendar Year 2009  
San Francisco Juvenile Probation Department  
Unduplicated Count of Juvenile Probation Referrals  
By Geographical Residence of Youth  
N=2,146

SF Zip Code		Count	%
94102	Tenderloin/Western Addition	46	2.14%
94103	South of Market	49	2.28%
94107	Potrero Hill	62	2.89%
94108	Chinatown	5	0.23%
94109	Russian Hill/Polk Gulch	39	1.82%
94110	Inner Mission	163	7.60%
94112	Ingleside/Excelsior	190	8.85%
94114	Castro/Eureka Valley	16	0.75%
94115	Western Addition	94	4.38%
94116	Parkside	41	1.91%
94117	Haight Ashbury/L Western Addition	39	1.82%
94118	Inner Richmond	18	0.84%
94121	Outer Richmond	30	1.40%
94122	Sunset	45	2.10%
94123	Marina/Cow Hollow	4	0.19%
94124	Bayview/Hunters Point	367	17.10%
94127	Miraloma/Sunnyside	17	0.79%
94130	Treasure Island	33	1.54%
94131	Twin Peaks/Glen Park	37	1.72%
94132	Lake Merced	47	2.19%
94133	North Beach	31	1.44%
94134	Visitacion Valley/Portola	177	8.25%
	<i>Non-San Francisco and Unavailable</i> <sup>1</sup>	596	27.77%
	<b>Total</b>	<b>2,146</b>	<b>100.00%</b>
	<b><sup>1</sup> Non-San Francisco and Unavailable</b>	<b>Count</b>	<b>%</b>
	OAKLAND	102	17.11%
	DALY CITY	52	8.72%
	HONDURAS	32	5.37%
	RICHMOND	26	4.36%
	VALLEJO	22	3.69%
	SOUTH SAN FRANCISCO	19	3.19%
	ANTIOCH	15	2.52%
	SAN LEANDRO	14	2.35%
	BERKELEY	14	2.35%
	SACRAMENTO	13	2.18%
	SAN JOSE	13	2.18%
	HAYWARD	12	2.01%
	SAN MATEO	10	1.68%
	PITTSBURG	9	1.51%
	SANTA ROSA	8	1.34%
	CONCORD	7	1.17%
	REDWOOD CITY	7	1.17%
	SAN PABLO	7	1.17%
	OTHER CITIES <sup>2</sup>	191	32.05%
	UNAVAILABLE	23	3.86%
	<b>Total</b>	<b>596</b>	<b>100.00%</b>

<sup>2</sup>Account for 103 cities with a minimum count of 1, maximum count of 6, and average of 1.9

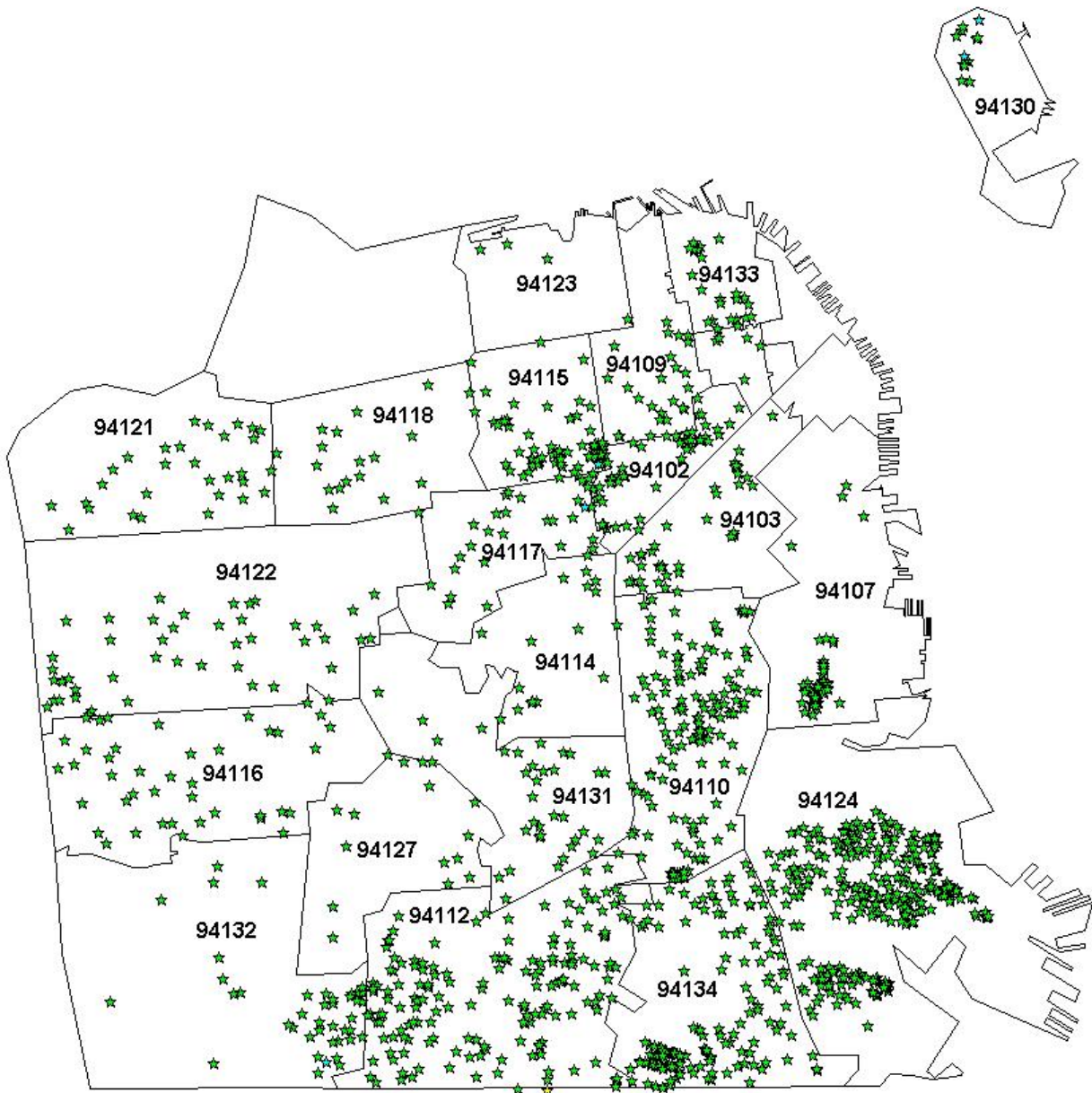
San Francisco Juvenile Probation Department  
2009 Unduplicated Count of Juvenile Probation Referrals  
By Geographical Residence of Youth  
Supervisory District Boundaries  
N=2,146<sup>1</sup>



<sup>1</sup>San Francisco = 1,550 (72.23%)  
Non-San Francisco = 596 (27.77%)

San Francisco Juvenile Probation Department  
2009 Unduplicated Count of Juvenile Probation Referrals  
By Geographical Residence of Youth  
San Francisco Zip Code Boundaries  
N=2,146<sup>1</sup>

<sup>1</sup>San Francisco = 1,550 (72.23%)  
Non-San Francisco = 596 (27.77%)



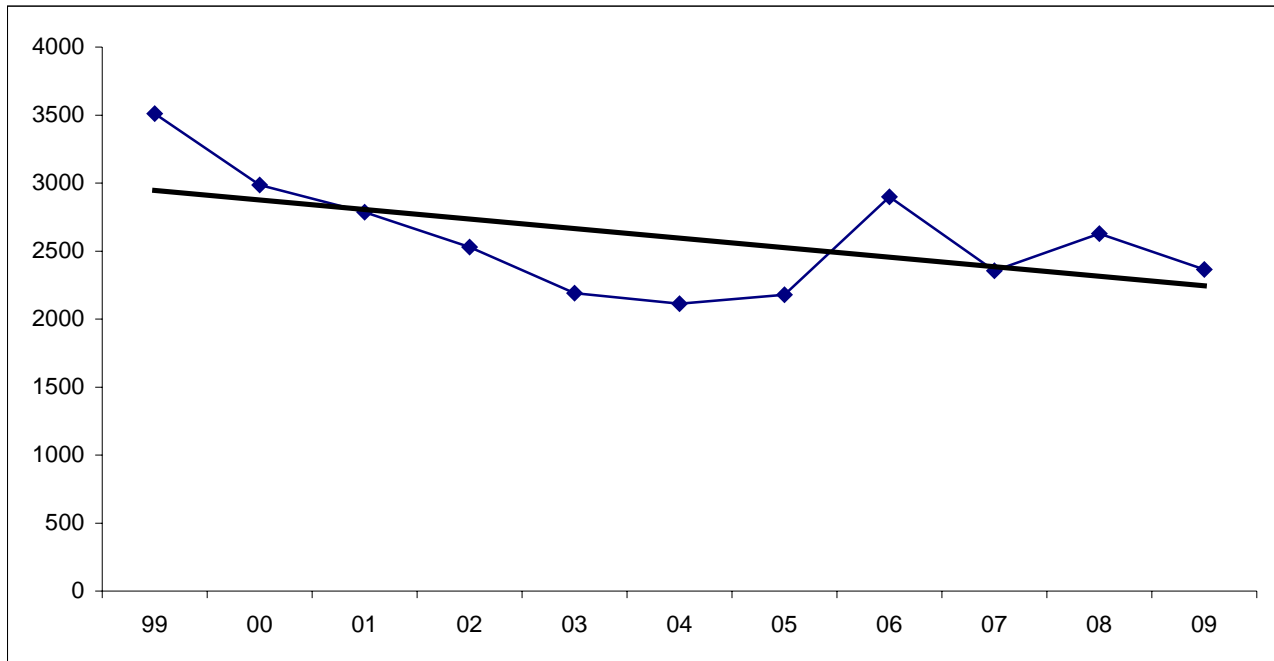
Calendar Year 2009  
San Francisco Juvenile Probation Department  
Duplicated Count of Juvenile Probation Referrals  
N=3,296

Gender	Count	%
FEMALE	903	27.40%
MALE	2393	72.60%
<b>Total</b>	<b>3,296</b>	<b>100.00%</b>

Race/Ethnic Origin	Count	%
AFRICAN AMERICAN	1630	49.45%
AMERICAN INDIAN	6	0.18%
CAMBODIAN	9	0.27%
CHINESE	81	2.46%
FILIPINO	52	1.58%
GUAMANIAN	1	0.03%
HAWAIIAN	1	0.03%
HISPANIC	841	25.52%
JAPANESE	1	0.03%
KOREAN	6	0.18%
OTHER	113	3.43%
OTHER ASIAN	115	3.49%
PACIFIC ISLANDER	11	0.33%
SAMOAN	78	2.37%
UNKNOWN	28	0.85%
VIETNAMESE	11	0.33%
WHITE	312	9.47%
<b>Total</b>	<b>3,296</b>	<b>100.00%</b>

Age at Referral	Count	%
11	27	0.82%
12	74	2.25%
13	207	6.28%
14	394	11.95%
15	666	20.21%
16	800	24.27%
17	1019	30.92%
18	97	2.94%
Over 18	12	0.36%
<b>Total</b>	<b>3,296</b>	<b>100.00%</b>

San Francisco Juvenile Probation Department  
Duplicated Count of Juvenile Probation Referrals -Criminal Offenses  
1999-2009



Year	Referrals
99	3510
00	2986
01	2785
02	2530
03	2191
04	2113
05	2179
06	2900
07	2356
08	2628
09	2364

Gender	1999	2000	2001	2002	2003	2004	2005	2006	2007	2008	2009
Male	2416	1924	1829	1687	1537	1452	1593	2075	1646	1892	1671
Female	1094	1062	956	843	654	661	586	825	710	736	693
Total	3510	2986	2785	2530	2191	2113	2179	2900	2356	2628	2364

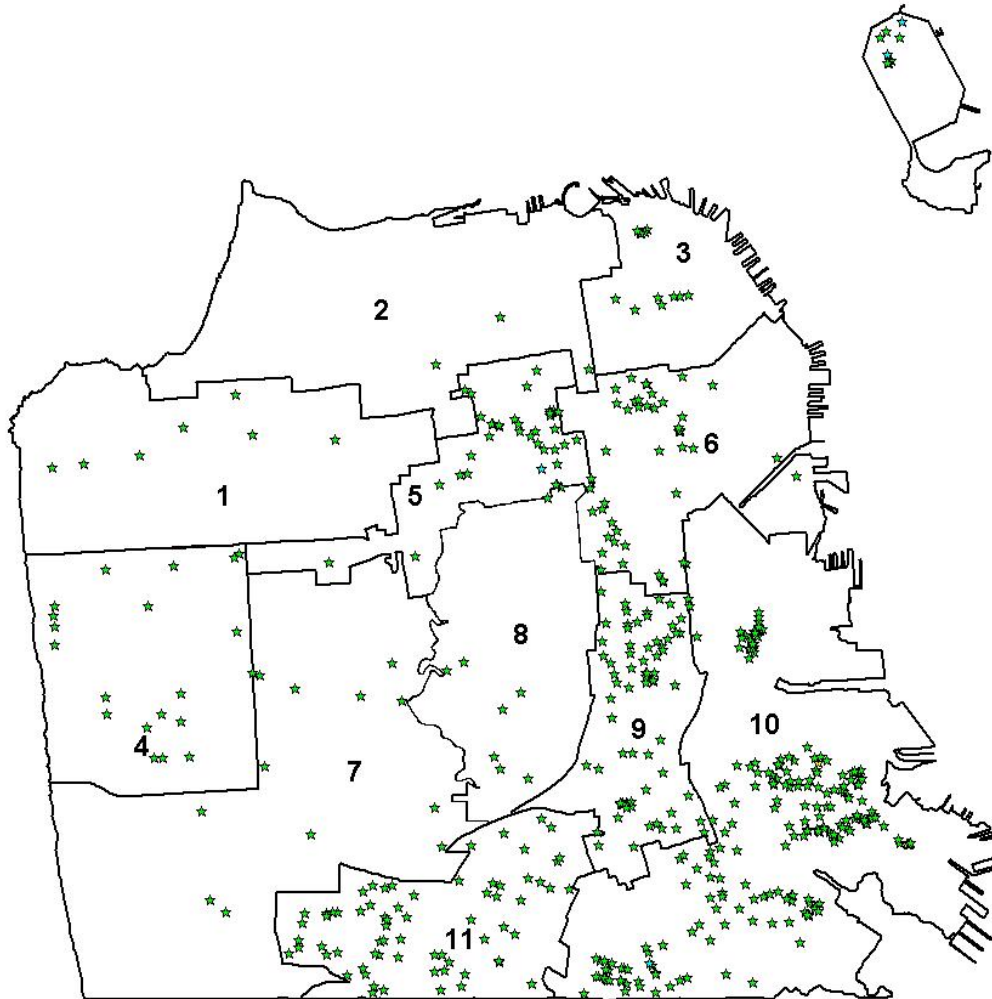
Calendar Year 2009  
San Francisco Juvenile Probation Department  
Unduplicated Count of Juvenile Hall Bookings  
Criminal Offenses  
N=836

Gender	Count	%
FEMALE	220	26.32%
MALE	616	73.68%
<b>Total</b>	<b>836</b>	<b>100.00%</b>

Race/Ethnic Origin	Count	%
AFRICAN AMERICAN	452	54.07%
AMERICAN INDIAN	2	0.24%
CAMBODIAN	1	0.12%
CHINESE	16	1.91%
FILIPINO	14	1.67%
GUAMANIAN	1	0.12%
HAWAIIAN	1	0.12%
HISPANIC	232	27.75%
KOREAN	4	0.48%
OTHER	11	1.32%
OTHER ASIAN	6	0.72%
PACIFIC ISLANDER	5	0.60%
SAMOAN	29	3.47%
VIETNAMESE	2	0.24%
WHITE	60	7.18%
<b>Total</b>	<b>836</b>	<b>100.00%</b>

Age on 5/13/2010	Count	%
11	2	0.24%
12	6	0.72%
13	20	2.39%
14	56	6.70%
15	103	12.32%
16	187	22.37%
17	208	24.88%
18	227	27.15%
Over 18	27	3.23%
<b>Total</b>	<b>836</b>	<b>100.00%</b>

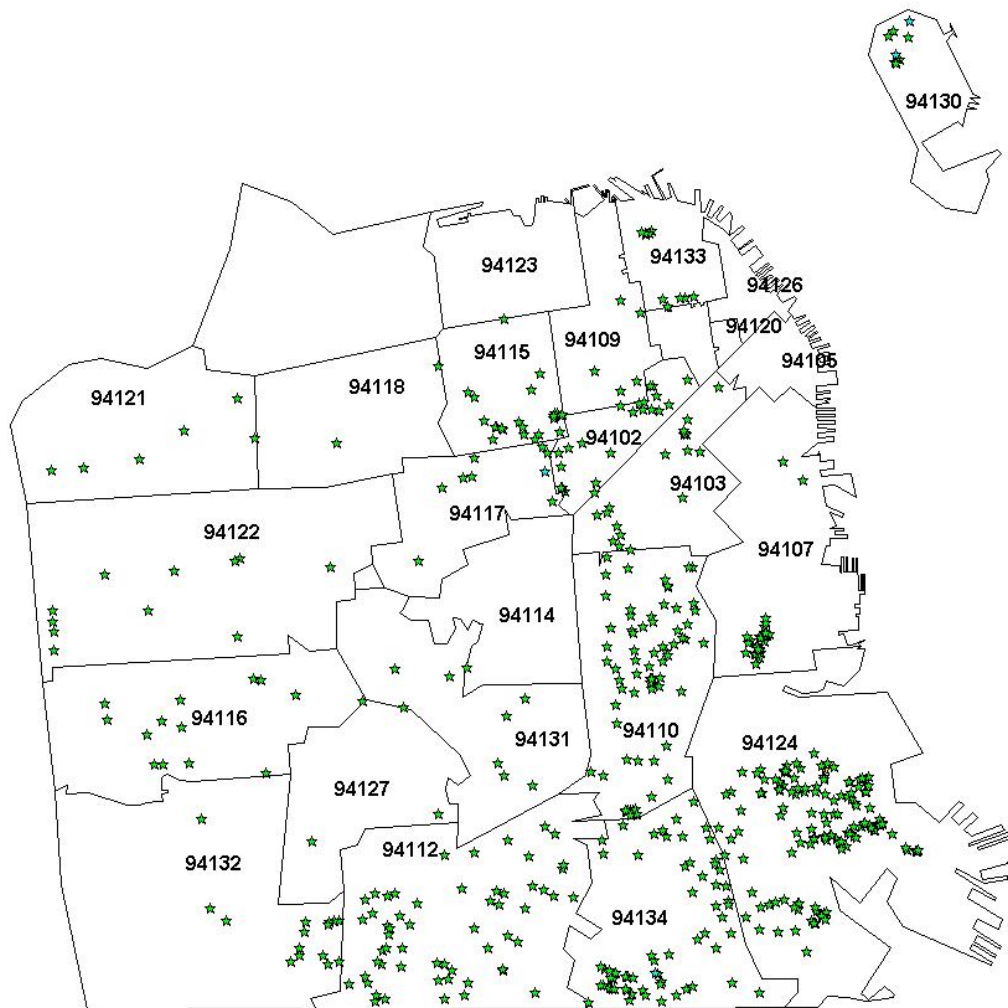
San Francisco Juvenile Probation Department  
2009 Unduplicated Count of Juvenile Hall Bookings  
Criminal Offenses  
By Geographical Residence of Youth  
**Supervisory District Boundaries**  
N=836<sup>1</sup>



<sup>1</sup>San Francisco = 576 (68.90%)  
Non-San Francisco = 260 (31.10%)



San Francisco Juvenile Probation Department  
2009 Unduplicated Count of Juvenile Hall Bookings  
Criminal Offenses  
By Geographical Residence of Youth  
**Zip Code Boundaries**  
N=836<sup>1</sup>



<sup>1</sup>San Francisco = 576 (68.90%)  
Non-San Francisco = 260 (31.10%)



San Francisco Juvenile Probation Department  
Unduplicated Count of Juvenile Hall Bookings  
Criminal Offenses  
By Geographical Residence of Youth  
Zip Code  
2005-2009

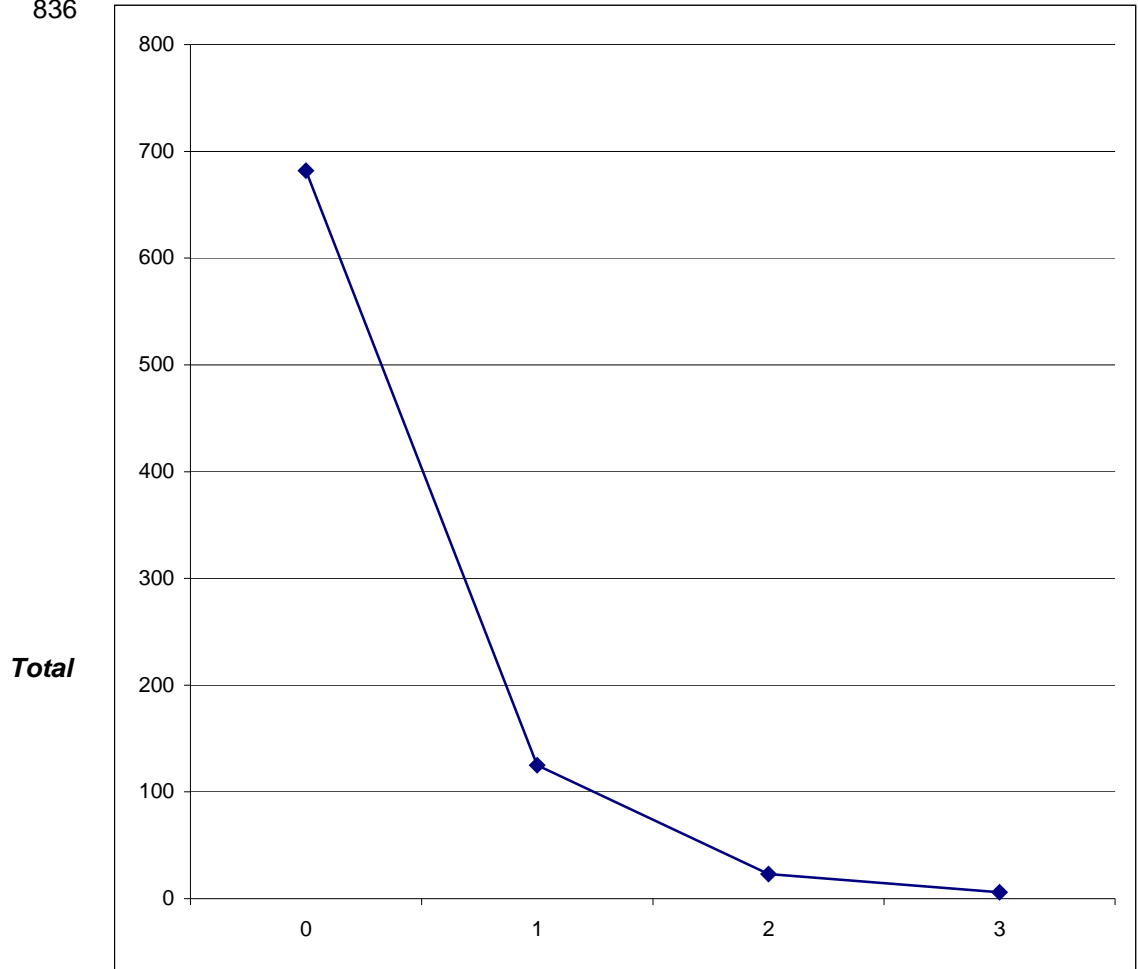
Zip Code		2005	2006	2007	2008	2009	% Change
94102	Tenderloin/Western Addition	32	26	22	27	17	-46.9%
94103	South of Market	18	18	18	20	23	27.8%
94107	Potrero Hill	21	27	20	24	25	19.0%
94108	Chinatown	4	3	7	4	0	-100.0%
94109	Russian Hill/Polk Gulch	25	14	20	12	11	-56.0%
94110	Inner Mission	75	75	56	66	75	0.0%
94112	Ingleside/Excelsior	70	90	72	77	67	-4.3%
94114	Castro/Eureka Valley	1	2	5	3	1	0.0%
94115	Western Addition	62	57	46	45	27	-56.5%
94116	Parkside	10	20	23	18	13	30.0%
94117	Haight Ashbury/L Western Addition	24	29	21	20	13	-45.8%
94118	Inner Richmond	16	15	6	6	2	-87.5%
94121	Outer Richmond	14	14	13	16	6	-57.1%
94122	Sunset	13	16	6	21	11	-15.4%
94123	Marina/Cow Hollow	0	0	1	0	0	0.0%
94124	Bayview/Hunters Point	158	177	182	195	160	1.3%
94127	Miraloma/Sunnyside	3	7	2	5	4	33.3%
94130	Treasure Island	9	11	8	18	16	77.8%
94131	Twin Peaks/Glen Park	8	15	5	10	7	-12.5%
94132	Lake Merced	22	29	18	17	16	-27.3%
94133	North Beach	18	27	20	15	10	-44.4%
94134	Visitacion Valley/Portola	65	99	73	70	72	10.8%
	<i>Non-San Francisco and Unavailable</i>	269	304	327	323	260	-3.3%
	<b>Total</b>	<b>937</b>	<b>1,075</b>	<b>971</b>	<b>1,012</b>	<b>836</b>	<b>-10.8%</b>

San Francisco Juvenile Probation Department  
***Unduplicated Count of Juvenile Hall Bookings***

Analysis of the Prior Arrests during 2009 For Criminal Offenses  
of Youth Admitted to Juvenile Hall in Calendar Year 2009

**N=836**

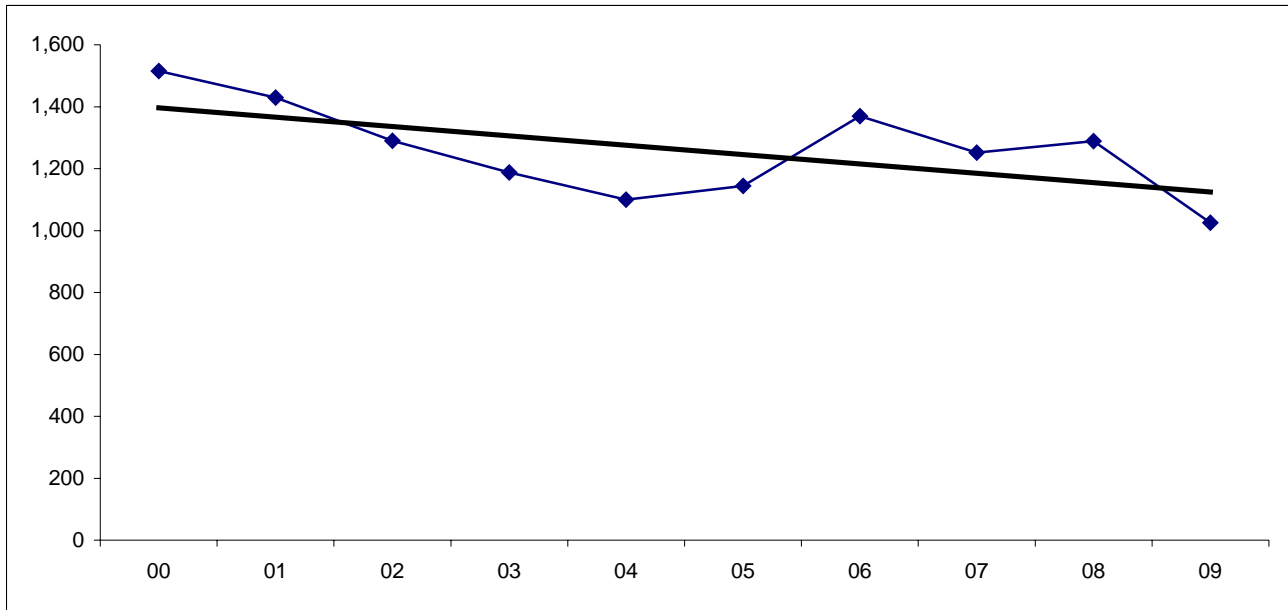
Prior Arrests	Total
0	682
1	125
2	23
3	6
Total	836



**Number of Prior Arrests for Criminal Offenses during 2009**

Arrested		
one time	682	81.58%
more than 1	154	18.42% Recidivist Rate
Total	836	100.00%

San Francisco Juvenile Probation Department  
Duplicated Count of Juvenile Hall Bookings -Criminal Offenses  
2000-2009



Year	Bookings
00	1,515
01	1,429
02	1,290
03	1,188
04	1,100
05	1,144
06	1,370
07	1,252
08	1,289
09	1,025

Gender	2000	2001	2002	2003	2004	2005	2006	2007	2008	2009
Male	1004	953	891	884	817	907	1023	944	986	781
Female	511	476	399	304	283	237	347	308	303	244
Total	1,515	1,429	1,290	1,188	1,100	1,144	1,370	1,252	1,289	1,025

City and County of San Francisco  
Juvenile Probation Department  
2009 Duplicated Count of Juvenile Hall Bookings –Sorted Most to Least Serious  
Criminal Offense Using Department of Justice Summary Codes

*Detention Reason*

	Black		White		Hispanic		Asian		Other		Total	%
	Male	Female	Male	Female	Male	Female	Male	Female	Male	Female		
<b>Willful Homicide</b>	0	0	0	0	2	0	0	0	0	0	<b>2</b>	0.20
<b>Forcible Rape</b>	2	0	0	0	2	0	0	0	0	0	<b>4</b>	0.39
<b>Robbery</b>	133	37	7	5	86	13	6	3	11	1	<b>302</b>	29.46
<b>Assault*</b>	60	30	9	2	47	12	16	3	18	3	<b>200</b>	19.51
<b>Kidnapping</b>	1	0	0	0	0	0	0	0	0	0	<b>1</b>	0.10
<b>Burglary</b>	30	10	3	0	5	3	6	0	0	0	<b>57</b>	5.56
<b>Theft</b>	18	9	2	2	5	1	1	0	2	1	<b>41</b>	4.00
<b>Motor Vehicle Theft</b>	10	1	1	0	1	2	3	0	0	1	<b>19</b>	1.85
<b>Narcotics</b>	20	35	0	0	42	2	0	0	0	0	<b>99</b>	9.66
<b>Marijuana –Felony</b>	16	1	4	0	7	0	1	0	1	0	<b>30</b>	2.93
<b>Dangerous Drugs</b>	3	0	1	0	1	0	1	0	1	0	<b>7</b>	0.68
<b>Child Molest –Felony</b>	2	0	0	0	0	0	0	0	0	0	<b>2</b>	0.20
<b>Sexual Battery</b>	5	0	1	0	1	0	0	0	0	0	<b>7</b>	0.68
<b>Weapons –Felony</b>	42	3	4	0	13	2	1	0	4	2	<b>71</b>	6.93
<b>Hit and Run –Felony</b>	1	0	0	1	0	0	0	0	0	0	<b>2</b>	0.20
<b>Escape</b>	0	0	0	0	0	1	0	0	0	0	<b>1</b>	0.10
<b>Arson</b>	0	0	2	0	0	0	1	0	0	0	<b>3</b>	0.29
<b>Other Felonies</b>	11	7	4	0	11	1	4	0	1	0	<b>39</b>	3.80
Assault Battery	31	7	3	2	8	3	0	1	3	1	<b>59</b>	5.76
Petty Theft	2	4	2	1	1	0	0	0	1	0	<b>11</b>	1.07
Defrauding Innkeeper	1	0	0	0	0	0	0	0	0	0	<b>1</b>	0.10
Marijuana –Misdemeanor	3	0	0	0	0	0	1	0	0	0	<b>4</b>	0.39
Lewd Conduct -Misdemeanor	0	0	0	0	0	2	0	0	0	0	<b>2</b>	0.20
Prostitution	0	11	0	5	0	2	0	0	0	1	<b>19</b>	1.85
Drunk	0	0	0	1	0	0	0	0	0	0	<b>1</b>	0.10
Liquor Laws	0	0	0	2	1	0	0	0	0	0	<b>3</b>	0.29
Vandalism	1	2	1	0	0	0	0	0	0	1	<b>5</b>	0.49
Trespassing	2	1	0	0	2	0	0	0	0	0	<b>5</b>	0.49
Weapons –Misdemeanor	2	0	0	0	2	1	0	0	1	0	<b>6</b>	0.59
Drive Under the Influence	0	0	0	0	0	0	0	0	1	0	<b>1</b>	0.10
Other Misdemeanors	2	0	0	1	5	0	0	0	0	0	<b>8</b>	0.78
Burglary Tools	0	0	0	0	0	0	0	0	1	0	<b>1</b>	0.10
Escape –Misdemeanor	6	0	0	0	1	0	0	0	2	0	<b>9</b>	0.88
Miscellaneous Traffic	0	1	0	0	0	0	0	0	0	0	<b>1</b>	0.10
Other Drugs –Misdemeanor	1	0	1	0	0	0	0	0	0	0	<b>2</b>	0.20
Other Miscellaneous	0	0	0	0	0	0	0	0	0	0	<b>0</b>	0.00
<b>Total</b>	<b>405</b>	<b>159</b>	<b>45</b>	<b>22</b>	<b>243</b>	<b>45</b>	<b>41</b>	<b>7</b>	<b>47</b>	<b>11</b>	<b>1025</b>	<b>100.00</b>
<b>%</b>	<b>39.51</b>	<b>15.51</b>	<b>4.39</b>	<b>2.15</b>	<b>23.71</b>	<b>4.39</b>	<b>4.00</b>	<b>0.68</b>	<b>4.59</b>	<b>1.07</b>	<b>100.00</b>	

\*Includes 9 attempted murders.

Calendar Year 2009  
Referral Source  
**Duplicated Count of Juvenile Hall Bookings**  
**Criminal Offenses**  
N=1,025

<b>Law Enforcement Referrals</b>		
<b>Local</b>	Number	Percent
San Francisco Police	935	
BART PD	1	
<i>Total</i>	936	91.32%
<b>Out-of-County Police Departments</b>		
PD San Mateo	1	
<i>Total</i>	1	0.10%
<b>State</b>		
California Highway Patrol	3	
California State Police	0	
<i>Total</i>	3	0.29%
<b>Federal</b>		
Federal Park Police	1	
<i>Total</i>	1	0.10%
<b>Total Law Enforcement</b>	<b>941</b>	<b>91.80%</b>
<b>Court Referrals</b>	Number	Percent
Adult Court San Francisco	1	
Alameda	14	
Contra Costa	6	
Fresno	2	
Lake	1	
Los Angeles	1	
Marin	3	
Sacramento	2	
San Joaquin	1	
San Mateo	17	
Santa Clara	1	
Solano	4	
Sonoma	4	
Stanislaus	2	
Tulare	2	
<i>Total Court</i>	<b>61</b>	<b>5.95%</b>
<b>Department/Agency Referrals</b>	Number	Percent
Probation Officer	23	
<b>Total Department/Agency</b>	<b>23</b>	<b>2.24%</b>
<b>Total Referrals - All Sources</b>	<b>1,025</b>	<b>100.00%</b>

**City and County of San Francisco  
Juvenile Probation Department  
Duplicated Count of Juvenile Hall Bookings  
Criminal Offenses**

	2005	2006	2007	2008	2009	Total	%
<b>Part I Crimes</b>							
Murder & Non-Negligent Manslaughter							
Willful Homicide	2	6	8	5	2	23	0.6%
Manslaughter Not Vehicle	0	0	0	0	0	0	0.0%
Negligent Manslaughter	0	0	0	0	0	0	0.0%
Rape	4	4	0	2	4	14	0.4%
Robbery	324	354	326	349	302	1655	45.5%
Aggravated Assault							
Assault	247	271	205	219	201	1143	31.5%
Kidnapping	7	12	12	3	1	35	1.0%
Arson	4	3	5	2	3	17	0.5%
Burglary	55	104	66	74	57	356	9.8%
Auto Boosting (Larceny)	0	0	0	0	0	0	0.0%
Larceny/Theft							
Theft	25	47	38	42	34	186	5.1%
Motor Vehicle Theft	60	63	34	29	19	205	5.6%
<b>Total Part I Crimes</b>	<b>728</b>	<b>864</b>	<b>694</b>	<b>725</b>	<b>623</b>	<b>3,634</b>	<b>100.0%</b>
<b>Part II Crimes</b>							
Other Assaults							
Sexual Battery	10	4	7	4	4	29	1.2%
Assault Battery	67	59	73	59	59	317	13.0%
Forgery and Counterfeiting							
Forgery, Checks, Access Cards	2	3	0	3	0	8	0.3%
Fraud and Worthless Checks							
Bookmaking	0	1	0	0	0	1	0.0%
Defrauding Innkeeper	3	4	3	3	0	13	0.5%
Embezzlement	0	0	0	0	0	0	0.0%
Receiving Stolen Property*	25	17	12	24	8	86	3.5%
Vandalism	7	6	7	6	5	31	1.3%
Weapons Offenses	69	90	78	91	77	405	16.6%
Prostitution and Commercialized Vice							
Prostitution	31	65	35	25	19	175	7.2%
Sex Offenses (Except Rape and Prostitution)	8	6	9	6	5	34	1.4%
Drug Abuse Violations							
Narcotics	115	129	215	204	99	762	31.2%
Marijuana	16	25	32	34	34	141	5.8%
Dangerous Drugs	4	6	7	6	9	32	1.3%
Gambling	0	0	0	0	0	0	0.0%
Offense Against Family and Children	0	0	0	0	0	0	0.0%
Driving Under the Influence	0	1	4	0	1	6	0.2%
Malicious Mischief	1	0	1	0	0	2	0.1%
Liquor Laws	0	0	1	1	3	5	0.2%
Drunkenness	1	0	1	2	1	5	0.2%
Desorderly Conduct	1	0	1	0	2	4	0.2%
Curfew and Loitering Laws	0	0	0	0	0	0	0.0%
All Other Offenses (Except Traffic)	56	90	72	96	76	390	15.9%
<b>Total Part II Crimes</b>	<b>416</b>	<b>506</b>	<b>558</b>	<b>564</b>	<b>402</b>	<b>2446</b>	<b>100.0%</b>
<b>Total Part I and Part II Crimes</b>	<b>1,144</b>	<b>1,370</b>	<b>1,252</b>	<b>1,289</b>	<b>1,025</b>	<b>6,080</b>	

\*Summary Code includes it with the Theft category

Calendar Year 2009  
**Duplicated Count of Juvenile Hall Bookings**  
**Criminal Offenses**

N=1,025

Gender		Offense Degree Level			Crime Type	Total
		<i>Felony</i>	<i>Misdemeanor</i>	Total	%	%
<b>Female</b>	<b>Crime Type</b>					
	Drug Crimes	37	1	38	15.6%	
	Person Crimes	110	13	123	50.4%	
	Property Crimes	30	9	39	16.0%	
	Public Order Crimes	17	27	44	18.0%	
	<b>Total</b>	<b>194</b>	<b>50</b>	<b>244</b>	<b>100.0%</b>	<b>23.8%</b>
<b>Male</b>	<b>Crime Type</b>					
	Drug Crimes	98	6	104	13.3%	
	Person Crimes	421	44	465	59.5%	
	Property Crimes	97	17	114	14.6%	
	Public Order Crimes	74	24	98	12.5%	
	<b>Total</b>	<b>690</b>	<b>91</b>	<b>781</b>	<b>100.0%</b>	<b>76.2%</b>
	<b>Total</b>	<b>884</b>	<b>141</b>	<b>1,025</b>		<b>100.0%</b>

Calendar Year 2009  
**Duplicated Count of Juvenile Hall Bookings**  
**Criminal Offenses**

N=1,025

Race/Ethnic Origin	Crime Type	Felony	Misdemeanor	Total	Crime Type	Total
					%	%
African American	Drug	75	4	79	14.0%	
	Person	279	37	316	56.0%	
	Property	80	13	93	16.5%	
	Public Order	54	22	76	13.5%	
	<b>Total</b>	<b>488</b>	<b>76</b>	<b>564</b>	<b>100.0%</b>	<b>55.0%</b>
Asian	Drug	2	1	3	6.3%	
	Person	32	1	33	68.8%	
	Property	11	0	11	22.9%	
	Public Order	1	0	1	2.1%	
	<b>Total</b>	<b>46</b>	<b>2</b>	<b>48</b>	<b>100.0%</b>	<b>4.7%</b>
Hispanic	Drug	51	1	52	18.1%	
	Person	166	11	177	61.5%	
	Property	19	6	25	8.7%	
	Public Order	19	15	34	11.8%	
	<b>Total</b>	<b>255</b>	<b>33</b>	<b>288</b>	<b>100.0%</b>	<b>28.1%</b>
Other	Drug	2	0	2	3.4%	
	Person	34	3	37	63.8%	
	Property	5	3	8	13.8%	
	Public Order	6	5	11	19.0%	
	<b>Total</b>	<b>47</b>	<b>11</b>	<b>58</b>	<b>100.0%</b>	<b>5.7%</b>
White	Drug	5	1	6	9.0%	
	Person	26	5	31	46.3%	
	Property	12	4	16	23.9%	
	Public Order	5	9	14	20.9%	
	<b>Total</b>	<b>48</b>	<b>19</b>	<b>67</b>	<b>100.0%</b>	<b>6.5%</b>
<b>Grand Total</b>		<b>884</b>	<b>141</b>	<b>1,025</b>		<b>100.0%</b>



City and County of San Francisco  
Juvenile Probation Department  
2009 Duplicated Count of Petitions Filed –Sorted Most to Least Serious  
Criminal Offense Using Department of Justice Summary Codes

<i>Petition Reason</i>	Black		White		Hispanic		Asian		Other		Total	%
	Male	Female	Male	Female	Male	Female	Male	Female	Male	Female		
<b>Willful Homicide</b>	0	0	0	0	2	0	0	0	0	0	<b>2</b>	0.18
<b>Forcible Rape</b>	0	0	0	0	1	0	0	0	0	0	<b>1</b>	0.09
<b>Robbery</b>	122	35	6	5	71	11	10	2	10	1	<b>273</b>	24.55
<b>Assault*</b>	61	27	14	2	37	10	22	2	13	5	<b>193</b>	17.36
<b>Kidnapping</b>	1	0	0	0	0	0	0	0	0	0	<b>1</b>	0.09
<b>Burglary</b>	55	20	2	0	10	6	9	2	4	0	<b>108</b>	9.71
<b>Theft</b>	27	11	3	2	6	4	2	0	0	1	<b>56</b>	5.04
<b>Motor Vehicle Theft</b>	6	1	1	0	0	1	0	1	0	0	<b>10</b>	0.90
<b>Narcotics</b>	22	38	0	1	44	1	2	0	0	2	<b>110</b>	9.89
<b>Marijuana –Felony</b>	18	3	10	1	10	0	4	0	3	0	<b>49</b>	4.41
<b>Dangerous Drugs</b>	1	0	3	2	2	0	1	3	2	0	<b>14</b>	1.26
<b>Child Molest –Felony</b>	4	0	1	0	1	0	0	0	1	0	<b>7</b>	0.63
<b>Sexual Battery</b>	2	0	1	0	2	1	0	0	0	0	<b>6</b>	0.54
<b>Weapons –Felony</b>	37	3	5	0	15	0	3	0	5	0	<b>68</b>	6.12
<b>Hit and Run –Felony</b>	1	0	0	1	0	0	0	0	0	0	<b>2</b>	0.18
<b>Escape –Felony</b>	0	0	0	0	0	1	0	0	0	0	<b>1</b>	0.09
<b>Arson</b>	1	0	2	0	0	0	0	0	0	0	<b>3</b>	0.27
<b>Other Felonies</b>	16	3	6	0	15	1	1	0	2	1	<b>45</b>	4.05
Assault Battery	22	14	2	0	12	1	8	0	2	0	<b>61</b>	5.49
Petty Theft	7	7	2	1	1	0	0	0	1	0	<b>19</b>	1.71
Defrauding Innkeeper	0	0	0	0	3	0	0	0	1	0	<b>4</b>	0.36
Marijuana –Misdemeanor	2	0	0	0	0	0	0	0	0	0	<b>2</b>	0.18
Lewd Conduct -Misdemeanor	0	1	0	0	0	2	0	0	0	0	<b>3</b>	0.27
Prostitution	0	11	0	7	0	1	0	0	0	1	<b>20</b>	1.80
Contribute Delinquency	0	0	0	0	1	0	0	0	0	0	<b>1</b>	0.09
Drunk	0	0	0	0	1	0	0	0	0	0	<b>1</b>	0.09
Disturbing Peace	1	1	0	1	0	0	0	0	0	0	<b>3</b>	0.27
Vandalism	1	0	0	0	3	1	1	0	1	0	<b>7</b>	0.63
Trespassing	1	0	0	0	0	0	0	0	0	0	<b>1</b>	0.09
Weapons –Misdemeanor	5	1	0	0	1	0	1	0	0	0	<b>8</b>	0.72
Driving Under the Influence	0	0	1	2	0	0	0	0	1	0	<b>4</b>	0.36
Selected Traffic	0	0	0	0	2	0	0	0	0	0	<b>2</b>	0.18
Joy Riding	1	0	0	0	1	0	1	0	0	0	<b>3</b>	0.27
Glue Sniffing	0	0	0	1	0	0	0	0	0	0	<b>1</b>	0.09
Other Misdemeanors	2	1	0	2	4	1	0	0	0	0	<b>10</b>	0.90
Sex Crimes -Misdemeanor	0	0	0	0	0	0	0	0	1	0	<b>1</b>	0.09
Escape -Misdemeanor	7	0	0	0	0	0	0	0	1	0	<b>8</b>	0.72
Miscellaneous Traffic	0	1	0	0	1	0	0	0	0	0	<b>2</b>	0.18
Other Drugs -Misdemeanor	0	0	1	0	0	1	0	0	0	0	<b>2</b>	0.18
<b>Total</b>	<b>423</b>	<b>178</b>	<b>60</b>	<b>28</b>	<b>246</b>	<b>43</b>	<b>65</b>	<b>10</b>	<b>48</b>	<b>11</b>	<b>1,112</b>	100.00
<b>%</b>	<b>38.04</b>	<b>16.01</b>	<b>5.40</b>	<b>2.52</b>	<b>22.12</b>	<b>3.87</b>	<b>5.85</b>	<b>0.90</b>	<b>4.32</b>	<b>0.99</b>	<b>100.00</b>	

\*Includes 7 attempted murders.

Calendar Year 2009  
**Duplicated Count of Petitions Filed**  
**Criminal Offenses**

N=1,112

Gender		Offense Degree Level			Crime Type	Total
		<i>Felony</i>	<i>Misdemeanor</i>	Total	%	%
<b>Female</b>	<b>Crime Type</b>					
	Drug Crimes	51	2	53	19.6%	
	Person Crimes	104	16	120	44.4%	
	Property Crimes	46	13	59	21.9%	
	Public Order Crimes	6	32	38	14.1%	
	<b>Total</b>	<b>207</b>	<b>63</b>	<b>270</b>	<b>100.0%</b>	<b>24.3%</b>
<b>Male</b>	<b>Crime Type</b>					
	Drug Crimes	122	3	125	14.8%	
	Person Crimes	399	49	448	53.2%	
	Property Crimes	142	32	174	20.7%	
	Public Order Crimes	68	27	95	11.3%	
	<b>Total</b>	<b>731</b>	<b>111</b>	<b>842</b>	<b>100.0%</b>	<b>75.7%</b>
	<b>Total</b>	<b>938</b>	<b>174</b>	<b>1,112</b>		<b>100.0%</b>

Calendar Year 2009  
**Duplicated Count of Petitions Filed**  
**Criminal Offenses**

N=1,112

Race/Ethnic Origin	Crime Type	Felony	Misdemeanor	Total	Crime Type	Total
					%	%
African American	Drug	82	2	84	14.0%	
	Person	261	38	299	49.8%	
	Property	125	18	143	23.8%	
	Public Order	46	29	75	12.5%	
	<b>Total</b>	<b>514</b>	<b>87</b>	<b>601</b>	<b>100.0%</b>	<b>54.0%</b>
Asian	Drug	10	0	10	13.3%	
	Person	37	8	45	60.0%	
	Property	12	4	16	21.3%	
	Public Order	3	1	4	5.3%	
	<b>Total</b>	<b>62</b>	<b>13</b>	<b>75</b>	<b>100.0%</b>	<b>6.7%</b>
Hispanic	Drug	57	1	58	20.1%	
	Person	143	14	157	54.3%	
	Property	29	17	46	15.9%	
	Public Order	15	13	28	9.7%	
	<b>Total</b>	<b>244</b>	<b>45</b>	<b>289</b>	<b>100.0%</b>	<b>26.0%</b>
Other	Drug	7	0	7	11.9%	
	Person	31	3	34	57.6%	
	Property	7	3	10	16.9%	
	Public Order	5	3	8	13.6%	
	<b>Total</b>	<b>50</b>	<b>9</b>	<b>59</b>	<b>100.0%</b>	<b>5.3%</b>
White	Drug	17	2	19	21.6%	
	Person	31	2	33	37.5%	
	Property	15	3	18	20.5%	
	Public Order	5	13	18	20.5%	
	<b>Total</b>	<b>68</b>	<b>20</b>	<b>88</b>	<b>100.0%</b>	<b>7.9%</b>
<b>Grand Total</b>		<b>938</b>	<b>174</b>	<b>1,112</b>		<b>100.0%</b>

City and County of San Francisco  
Juvenile Probation Department  
2009 Duplicated Count of Petitions Sustained –Sorted Most to Least Serious  
Criminal Offense Using Department of Justice Summary Codes

<i>Petition Sustained</i>	Black		White		Hispanic		Asian		Other		Total	%
	Male	Female	Male	Female	Male	Female	Male	Female	Male	Female		
<b>Forcible Rape</b>	0	0	0	0	1	0	0	0	0	0	<b>1</b>	0.13
<b>Robbery</b>	83	21	6	3	59	10	7	1	7	1	<b>198</b>	25.78
<b>Assault</b>	38	14	7	2	23	5	10	1	7	4	<b>111</b>	14.45
<b>Kidnapping</b>	1	0	0	0	0	0	0	0	0	0	<b>1</b>	0.13
<b>Burglary</b>	37	16	1	0	4	4	5	1	0	0	<b>68</b>	8.85
<b>Theft</b>	24	8	2	1	4	2	1	0	0	1	<b>43</b>	5.60
<b>Motor Vehicle Theft</b>	4	1	1	0	0	1	0	1	0	0	<b>8</b>	1.04
<b>Narcotics</b>	16	29	0	0	35	1	0	0	0	1	<b>82</b>	10.68
<b>Marijuana –Felony</b>	15	2	5	0	9	0	2	0	2	0	<b>35</b>	4.56
<b>Dangerous Drugs</b>	1	0	2	1	2	0	0	1	2	0	<b>9</b>	1.17
<b>Child Molest –Felony</b>	3	0	1	0	1	0	0	0	1	0	<b>6</b>	0.78
<b>Sexual Battery</b>	1	0	0	0	1	0	0	0	0	0	<b>2</b>	0.26
<b>Weapons –Felony</b>	27	1	5	0	10	0	1	0	3	0	<b>47</b>	6.12
<b>Hit and Run –Felony</b>	1	0	0	1	0	0	0	0	0	0	<b>2</b>	0.26
<b>Escape –Felony</b>	0	0	0	0	0	1	0	0	0	0	<b>1</b>	0.13
<b>Other Felonies</b>	13	2	1	0	9	0	0	0	1	0	<b>26</b>	3.39
Assault Battery	17	9	1	0	9	1	8	0	2	0	<b>47</b>	6.12
Petty Theft	5	6	2	1	1	0	0	0	1	0	<b>16</b>	2.08
Defrauding Innkeeper	0	0	0	0	3	0	0	0	1	0	<b>4</b>	0.52
Marijuana –Misdemeanor	2	0	0	0	0	0	0	0	0	0	<b>2</b>	0.26
Lewd Conduct –Misdemeanor	0	1	0	0	0	1	0	0	0	0	<b>2</b>	0.26
Prostitution	0	10	0	5	0	1	0	0	0	1	<b>17</b>	2.21
Contribute Delinquency	0	0	0	0	1	0	0	0	0	0	<b>1</b>	0.13
Drunk	0	0	0	0	1	0	0	0	0	0	<b>1</b>	0.13
Disturbing Peace	1	1	0	0	0	0	0	0	0	0	<b>2</b>	0.26
Vandalism	1	0	0	0	2	1	0	0	1	0	<b>5</b>	0.65
Trespassing	1	0	0	0	0	0	0	0	0	0	<b>1</b>	0.13
Weapons –Misdemeanor	4	1	0	0	0	0	1	0	0	0	<b>6</b>	0.78
Driving Under the Influence	0	0	0	1	0	0	0	0	1	0	<b>2</b>	0.26
Joy Riding	1	0	0	0	1	0	1	0	0	0	<b>3</b>	0.39
Glue Sniffing	0	0	0	1	0	0	0	0	0	0	<b>1</b>	0.13
Other Misdemeanors	2	1	0	1	3	1	0	0	0	0	<b>8</b>	1.04
Sex Crimes –Misdemeanor	0	0	0	0	0	0	0	0	1	0	<b>1</b>	0.13
Escape	4	0	0	0	0	0	0	0	1	0	<b>5</b>	0.65
Miscellaneous Traffic	0	1	0	0	1	0	0	0	0	0	<b>2</b>	0.26
Other Drugs -Misdemeanor	0	0	1	0	0	1	0	0	0	0	<b>2</b>	0.26
<b>Total</b>	<b>302</b>	<b>124</b>	<b>35</b>	<b>17</b>	<b>180</b>	<b>30</b>	<b>36</b>	<b>5</b>	<b>31</b>	<b>8</b>	<b>768</b>	100.00
<b>%</b>	<b>39.32</b>	<b>16.15</b>	<b>4.56</b>	<b>2.21</b>	<b>23.44</b>	<b>3.91</b>	<b>4.69</b>	<b>0.65</b>	<b>4.04</b>	<b>1.04</b>	<b>100.00</b>	

Calendar Year 2009  
**Duplicated Count of Petitions Sustained**  
**Criminal Offenses**

N=768

Gender		Offense Degree Level			Crime Type	Total
		<i>Felony</i>	<i>Misdemeanor</i>	Total	%	%
<b>Female</b>	<b>Crime Type</b>					
	Drug Crimes	33	4	37	20.1%	
	Person Crimes	48	27	75	40.8%	
	Property Crimes	17	27	44	23.9%	
	Public Order Crimes	0	28	28	15.2%	
	<b>Total</b>	<b>98</b>	<b>86</b>	<b>184</b>	<b>100.0%</b>	<b>24.0%</b>
<b>Male</b>	<b>Crime Type</b>					
	Drug Crimes	77	17	94	16.1%	
	Person Crimes	200	108	308	52.7%	
	Property Crimes	47	67	114	19.5%	
	Public Order Crimes	44	24	68	11.6%	
	<b>Total</b>	<b>368</b>	<b>216</b>	<b>584</b>	<b>100.0%</b>	<b>76.0%</b>
	<b>Total</b>	<b>466</b>	<b>302</b>	<b>768</b>		<b>100.0%</b>

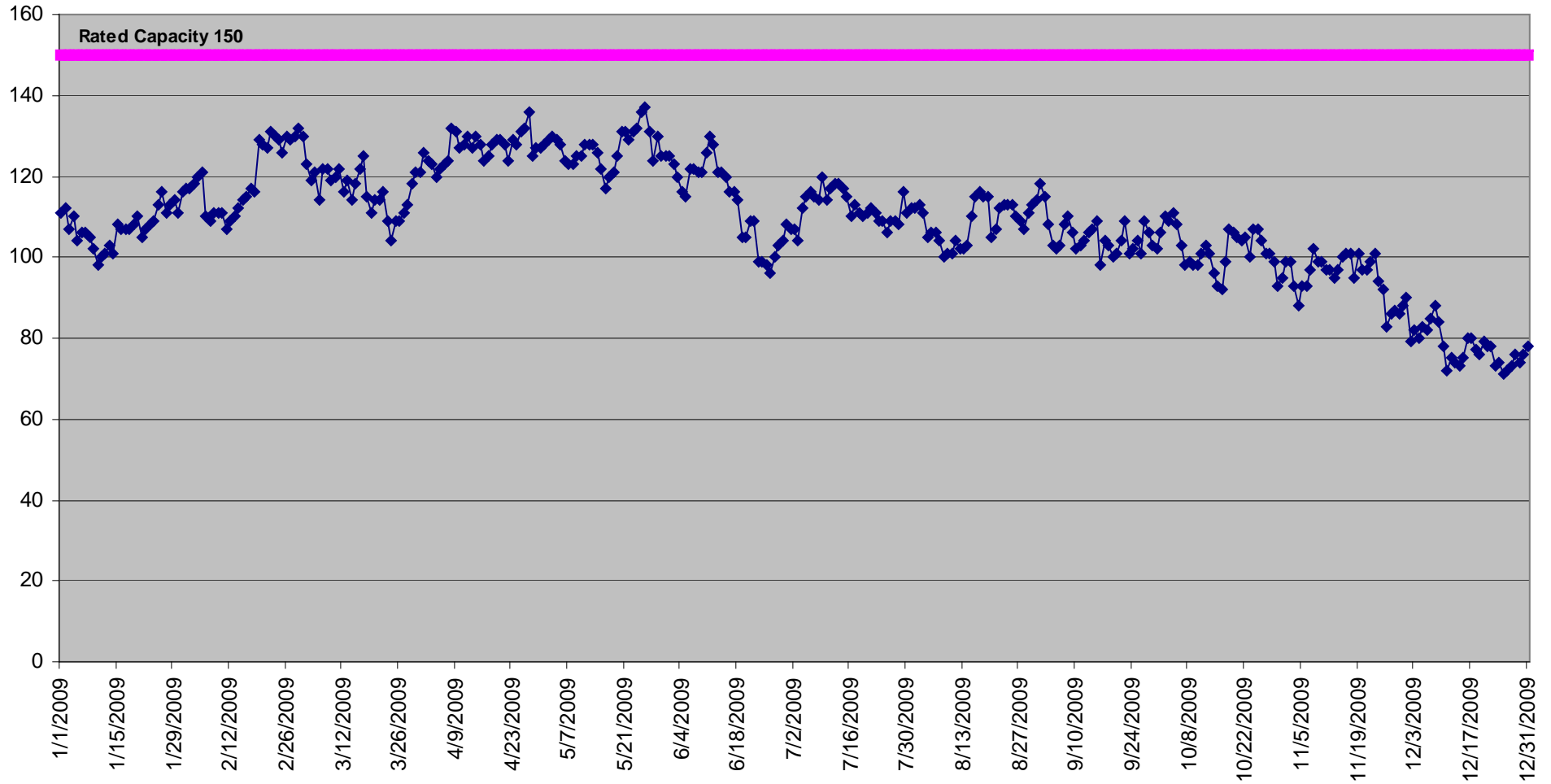
Calendar Year 2009  
**Duplicated Count of Petitions Sustained**  
**Criminal Offenses**

N=768

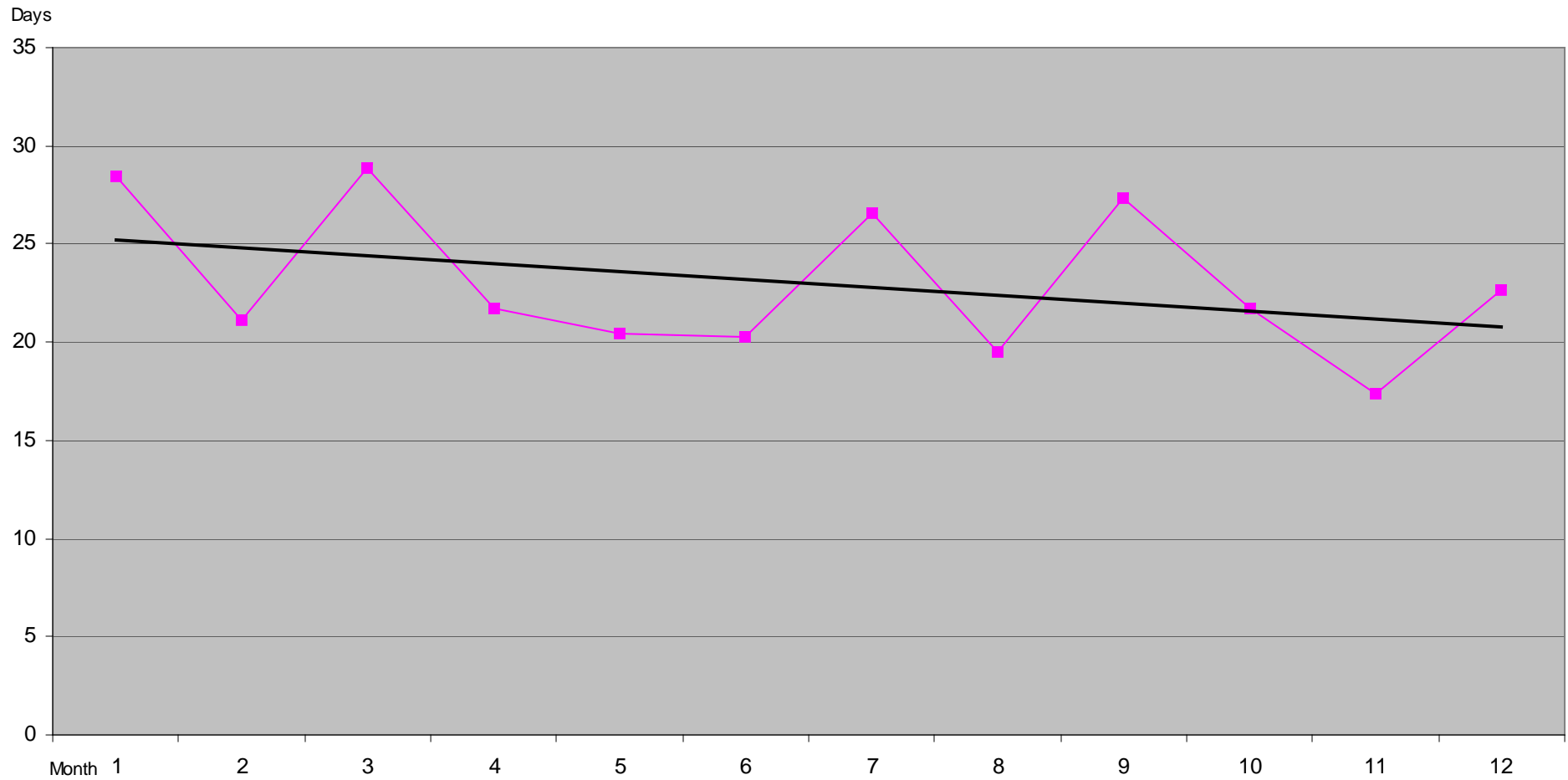
Race/Ethnic Origin	Crime Type	Felony	Misdemeanor	Total	Crime Type	Total
					%	%
African American	Drug	56	9	65	15.3%	
	Person	122	74	196	46.0%	
	Property	50	57	107	25.1%	
	Public Order	31	27	58	13.6%	
	<b>Total</b>	<b>259</b>	<b>167</b>	<b>426</b>	<b>100.0%</b>	<b>55.5%</b>
Asian	Drug	3	0	3	7.3%	
	Person	14	13	27	65.9%	
	Property	4	5	9	22.0%	
	Public Order	1	1	2	4.9%	
	<b>Total</b>	<b>22</b>	<b>19</b>	<b>41</b>	<b>100.0%</b>	<b>5.3%</b>
Hispanic	Drug	42	6	48	22.9%	
	Person	83	33	116	55.2%	
	Property	8	20	28	13.3%	
	Public Order	6	12	18	8.6%	
	<b>Total</b>	<b>139</b>	<b>71</b>	<b>210</b>	<b>100.0%</b>	<b>27.3%</b>
Other	Drug	4	1	5	12.8%	
	Person	15	8	23	59.0%	
	Property	0	5	5	12.8%	
	Public Order	3	3	6	15.4%	
	<b>Total</b>	<b>22</b>	<b>17</b>	<b>39</b>	<b>100.0%</b>	<b>5.1%</b>
White	Drug	5	5	10	19.2%	
	Person	14	7	21	40.4%	
	Property	2	7	9	17.3%	
	Public Order	3	9	12	23.1%	
	<b>Total</b>	<b>24</b>	<b>28</b>	<b>52</b>	<b>100.0%</b>	<b>6.8%</b>
<b>Grand Total</b>		<b>466</b>	<b>302</b>	<b>768</b>		<b>100.0%</b>

San Francisco Juvenile Probation Department  
Calendar Year 2009  
Juvenile Hall Daily Population  
Average 109

Male 95  
Female 14



San Francisco Juvenile Probation Department  
Calendar Year 2009  
Juvenile Hall Monthly Average Length of Stay  
N=1,569  
Average 23 days





# San Francisco Juvenile Court Processing of Law Violation Cases

## Referrals for Criminal Offenses —Calendar Year 2009

Referrals for Criminal Offenses —Calendar Year 2009					Dispositions*		
Referrals	2,364	Petition Filed 1,112 47.0%			Ward Probation	299	26.9%
					Out of Home Placement	116	10.4%
					Non-Ward Probation (725a WI)	49	4.4%
					Informal Probation (654 WI)	157	14.1%
					Log Cabin Ranch	18	1.6%
					Department Juvenile Justice	0	0.0%
					Remand Adult Court	2	0.2%
					Petition Dismissed	122	11.0%
					Transferred Out of County	155	13.9%
			No Petition Filed 1,252 53.0%				
			Juvenile Hall Bookings 1,025 43.4%	<i>Note: 76 (6.8%) charges on other petitions were Combined and only one disposition resulted. Waiting Adjudication/Disposition: 118 (10.6%)</i>			
			Non- Juvenile Hall Bookings 1,339 56.6%				<i>*Includes Petition Outcomes dated as of 6/15/2010 and it will not match the</i>

*Note: 76 (6.8%) charges on other petitions were Combined and only one disposition resulted.  
Waiting Adjudication/Disposition: 118 (10.6%)*

*\*Includes Petition Outcomes dated as of 6/15/2010 and it will not match the outcomes of page 2 (all referrals outcome). Does not include violation of probation and criminal offense petitions filed prior to 2009.*

## San Francisco Juvenile Justice System Terms:

**Arrest:** The taking of a minor into custody by the police, when the police believe that the minor has committed a violation of a criminal law. A minor may also be taken into custody by the police for an alleged probation violation or pursuant to a warrant issued by a court. While the use of the term arrest is commonplace, technically minors are not arrested; they are detained or taken into temporary custody by the police.

**Case:** The opening of a file by any agency for a minor who is being processed by that agency because the minor is alleged to have committed an act that violated a criminal law or an act that is illegal only for minors.

**Citation:** The issuance of a written document to a minor by the police, informing the minor of an offense that the minor is alleged to have committed and ordering the minor to appear before a probation officer on a certain date and time. The minor will not be kept in the custody of the police after the citation is issued.

**Detention (secure):** When a minor is placed in secure custody at Juvenile Hall and is remains overnight (technically, is arrested on one day and remains in JH at 6 a.m. the next).

**Home Detention (non-secure):** When a minor is released to her or his home, rather than put into secure detention, but with strict conditions placed on the minor by the Juvenile Court or the Juvenile Probation Department.

**Dismissal:** When formal charges against a minor, contained in a petition to the Juvenile Court, are dismissed and therefore the minor is not brought under the formal jurisdiction of the Court.

**Disposition:** A decision by the Juvenile Court with respect to what placement/supervision a minor who is made a ward of the Court will receive. A minor placed under the formal supervision of the Court is made "a ward of the Court."

**Law violation:** A charge that a minor has committed an act that would be a criminal act if committed by an adult.

**Booking:** The process of admitting a person to Juvenile Hall.

**Referral:** The Juvenile Probation Department counts as a referral all separate instances when a minor is cited or brought to the JPD. It uses the term *contact* interchangeably with referral and indicates that each contact represents a "unit of work" for the Department. Referrals include contacts beyond those related to arrests, citations, bookings, or cases.

**Petition:** A formal statement by the District Attorney's Office alleging that the juvenile is delinquent for committing specified offense. **Petition Sustained:** Charges are found true.

**Most serious charge:** Of all the charges on the petition, the charge ranked most serious by the California Department of Justice hierarchy, which carries the most jail time.