

City and County of San Francisco



Juvenile Probation Department

Monthly Report for February 2010

Presented to the Juvenile Probation Commission

March 10th, 2010

William P. Siffermann
Chief Probation Officer

Prepared by Jose Luis Perla
Information Technology Director
(415) 753-7686
jose.perla@sfgov.org

Table of Contents

Comparison Drug Charges and Other Criminal Offenses

Youth Admitted to Juvenile Hall for Drug Related Charges.....	1
Youth Admitted to Juvenile Hall for Other Criminal Offenses	
Demographics Characteristics	2
Youth Admitted to Juvenile Hall for Other Criminal Offenses	
Geographical Residence	3
Geographical Residence of Youth -GIS Map by Zip Code	4
Geographical Residence of Youth -GIS Map by Supervisorial District	5
Geographical Residence of Youth -GIS Map by SFPD District	6

Section II Current Month General Detail

Probation Referrals, Juvenile Admissions And Average Daily Population	4
Juvenile Hall Admissions and Average Daily Population.....	5
Commitments to out-of-home placement	6
Commitments to California Youth Authority	7
Log Cabin Ranch Admissions and Average Daily Population.....	8
Probation Referrals	9
Bay Area Resident Juvenile Hall Comparison	10
Juvenile Hall Admissions	11
Juvenile Hall Detainees by Detention Reason.....	12
Juvenile Hall Average Daily Population by Rated Capacity	13
Juvenile Hall Average Length of Stay	14

Section III Demographics

Juvenile Hall Detainees by Sex and Race/Ethnic Origin.....	15
Juvenile Hall Detainees by Age.....	16
Juvenile Hall Detainees by Age and Sex	17
Juvenile Hall Detainees by Geographic Residence of Youth	18
Juvenile Hall Detainees by Race/Ethnic Origin and Sex.....	19

Section IV

Historical Information

2007-2009 Probation Referrals	20
2007-2009 Juvenile Hall Admissions	21
2007-2009 Juvenile Hall Average Daily Population	22

Section I

Summary Reports

Summary Report for the Month of February 2010

Juvenile Hall	<i>January 2009</i>	<i>January 2010</i>	<i>February 2009</i>	<i>February 2010</i>	<i>YTD 2009</i>	<i>YTD 2010</i>
Admissions	163	121	133	147	296	268
Average Daily Population	107.61	85	119	104	113	94
Average Length of Stay (Releases)	21.68	19.20	21.47	15.61	21.68	17.41
Average Length of Stay (In Custody)	64.62	56.41	63.56	50.22	64.09	53.32
Releases	142	117	120	114	262	231
Log Cabin Ranch						
Admissions:						
First Time Commitments	3	1	2	1	5	2
Recommitments	1	0	0	0	1	0
<i>Total</i>	4	1	2	1	6	2
Releases:						
Graduated	0	3	2	0	2	3
Escape	0	0	0	0	0	0
Other releases	2	0	2	0	4	0
<i>Total</i>	2	3	4	0	6	3
Average Daily Population	17	11	19	12	18	11

Summary Report for the Month of February 2010

Probation Services	<i>January 2010</i>	<i>February 2010</i>	<i>Year To Date 2009</i>
Probation Referrals	296	240	536
Total Petitions including violation of probation	98	132	230
Selected Court Dispositions:			
California Youth Authority	0	0	0
Log Cabin Ranch	2	2	4
Out of Home Placement	8	8	16
Ward Probation	31	25	56
Non-Ward Probation (725a WI)	4	1	5
Informal Probation (654 WI)	7	13	20
Violation of Probation Petitions Filed	12	16	28
California Youth Authority Monthly Count San Francisco County Juvenile Court Cases February 28 th , 2010			
Category	Institutions	Parole	
Males			
White	0	1	
Hispanic	0	3	
African American	5	5	
Asian	0	0	
Native American	0	0	
Filipino	0	0	
Pacific Islander	1	0	
Other	0	0	
Total	6	9	
Females			
White	0	0	
Hispanic	0	1	
African American	0	1	
Asian	0	0	
Native American	0	0	
Filipino	0	0	
Pacific Islander	0	0	
Other	0	0	
Total	0	2	
Grand Total	6	11	

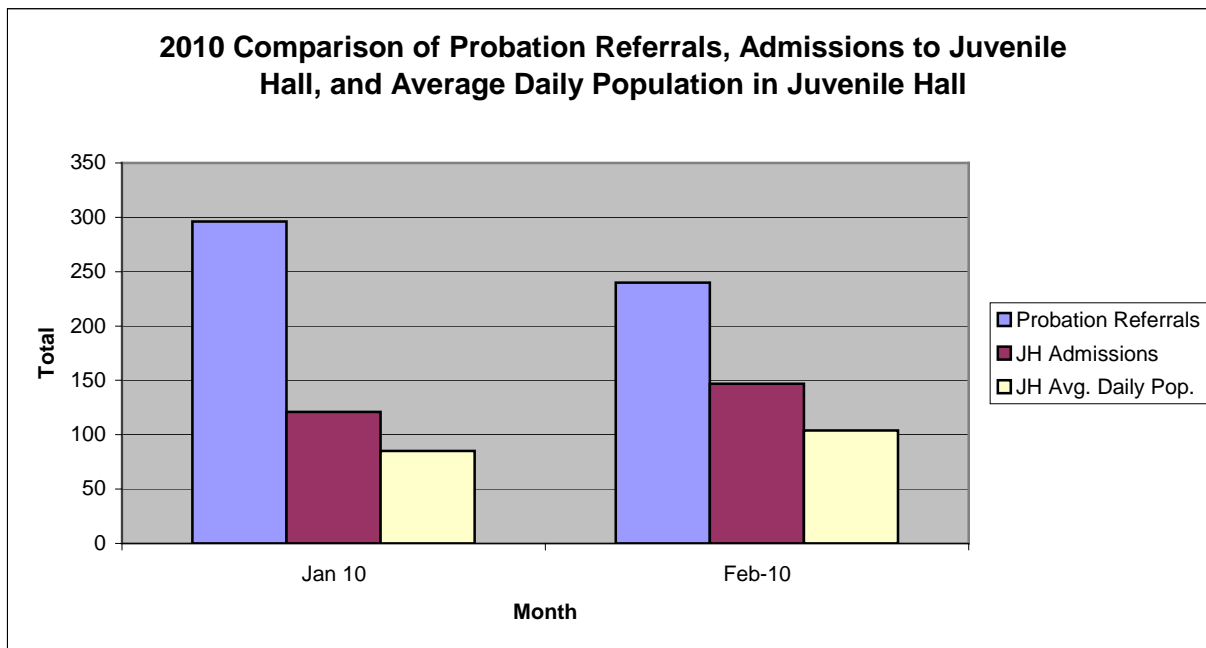
Summary Report for the Month of February 2010

Probation Services			
Active Cases by Units	January 2010	February 2010	February Average # Youth by PO
CARC	187	173	173
Intake Green (Custody Screening Investigation)	141	142	17
Intake Gold (Probation Services 1)	205	205	29
Probation Services 2	201	205	20
Probation Services 3	231	232	23
Probation Services 4	192	191	23
Special Services	45	43	10
<i>Total</i>	1,202	1,191	42
Total Active Intake Cases	545	530	
Total Probation/Supervision Cases	657	661	

Section II
Current Month
General Detail

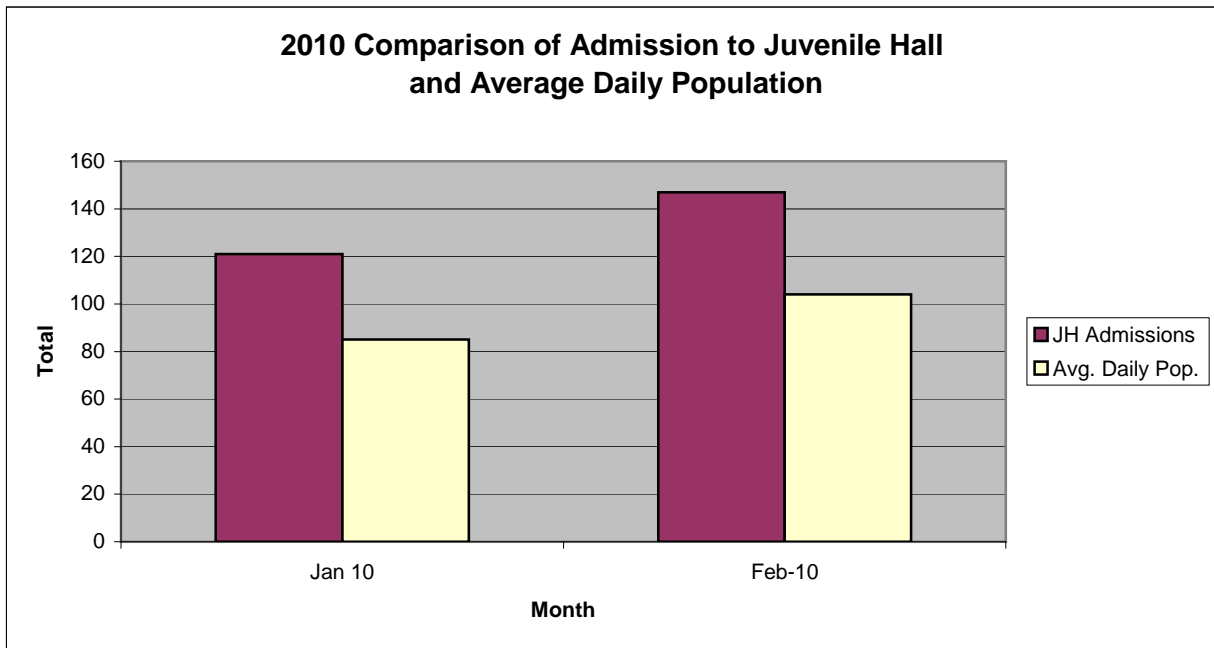
San Francisco Juvenile Probation Department

	Jan 10	Feb-10	Mar-10	Apr-10	May-10	Jun-10	Jul-10	Aug-10	Sep-10	Oct-10	Nov-10	Dec-10
Probation Referrals	296	240										
JH Admissions	121	147										
JH Avg. Daily Pop.	85	104										



San Francisco Juvenile Probation Department

	Jan 10	Feb-10	Mar-10	Apr-10	May-10	Jun-10	Jul-10	Aug-10	Sep-10	Oct-10	Nov-10	Dec-10
JH Admissions	121	147										
Avg. Daily Pop.	85	104										

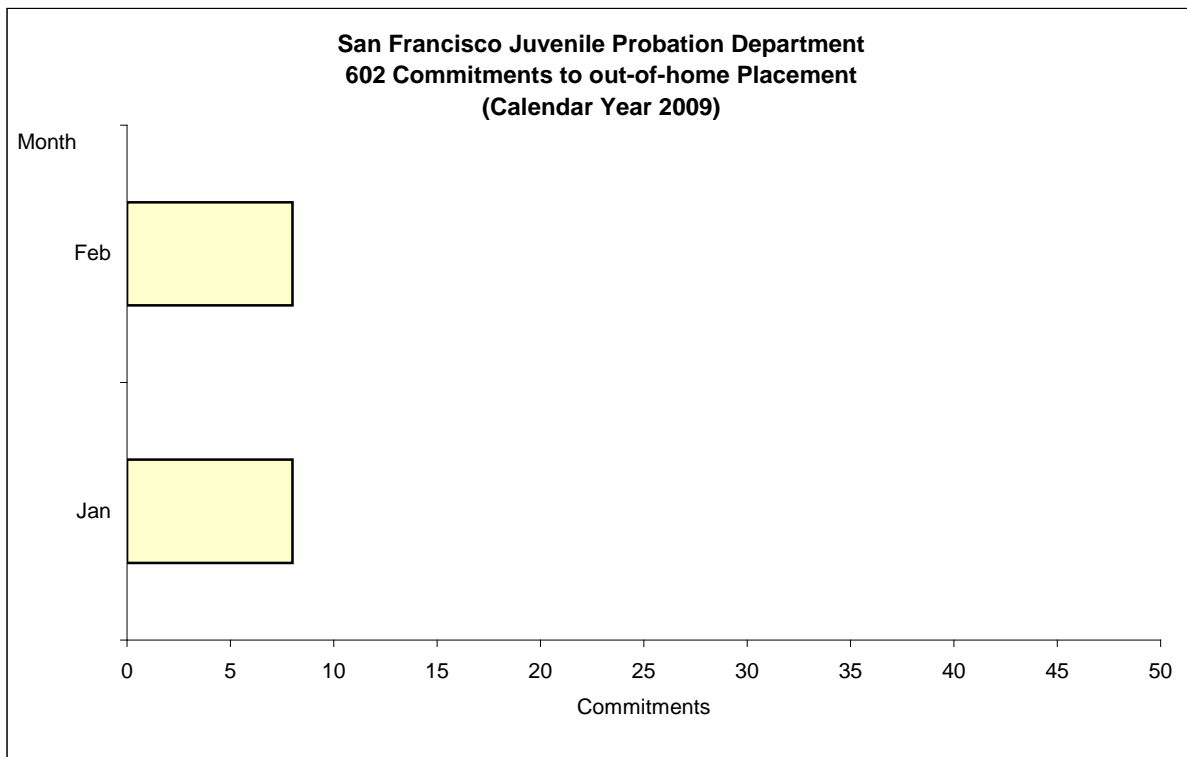


Out-of-Home Placement¹

Commitments of 602's

Calendar Year 2010

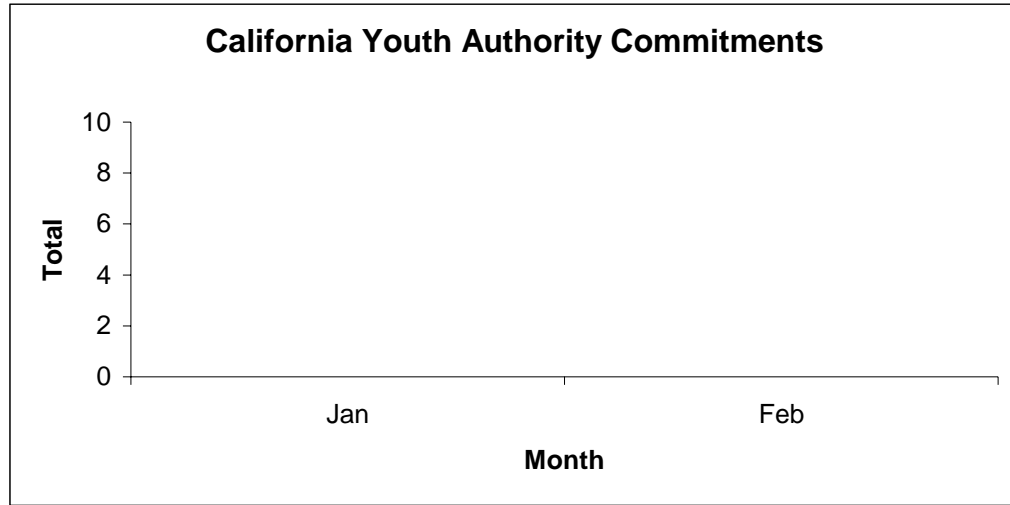
Commitments	Jan	Feb	Mar	Apr	May	Jun	Jul	Aug	Sep	Oct	Nov	Dec	Total
2010	8	8											16



¹ This report is based on 602 Commitments to out-of-home placements. If there is a 601 commitment, it will show as a footnote here. Figures are regularly updated to include reports from previous reporting periods.

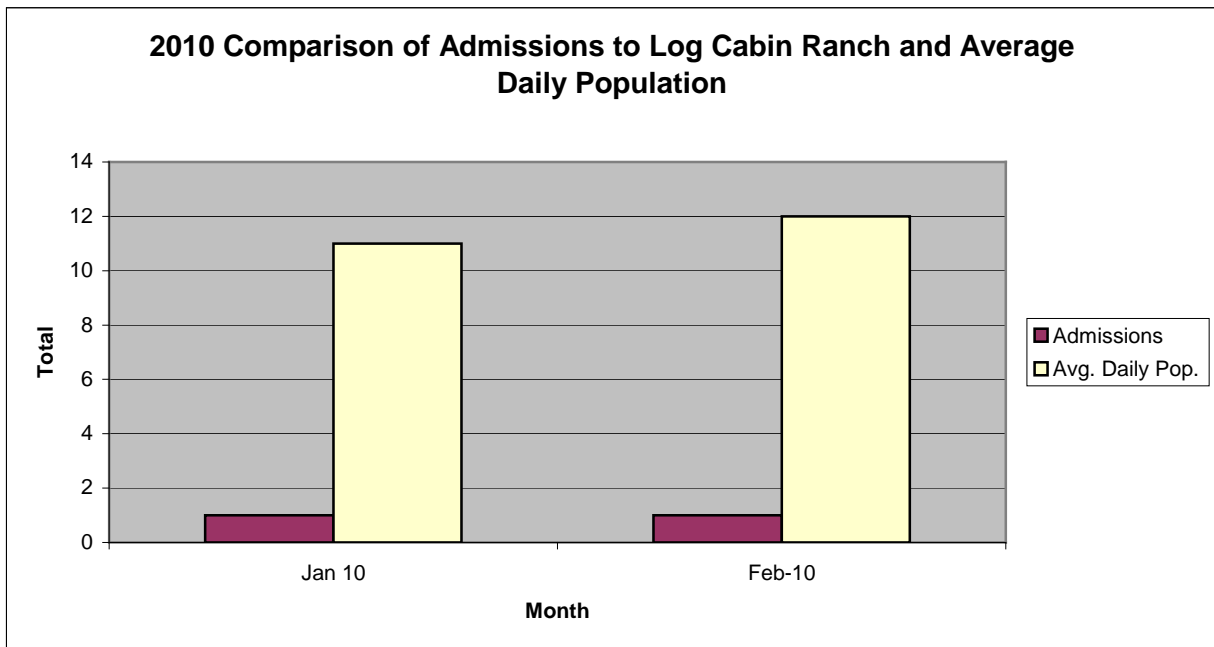
California Youth Authority
Commitments
(Calendar Year 2010)

Commitments	Jan	Feb	Mar	Apr	May	Jun	Jul	Aug	Sep	Oct	Nov	Dec	Total
2010	0	0											0



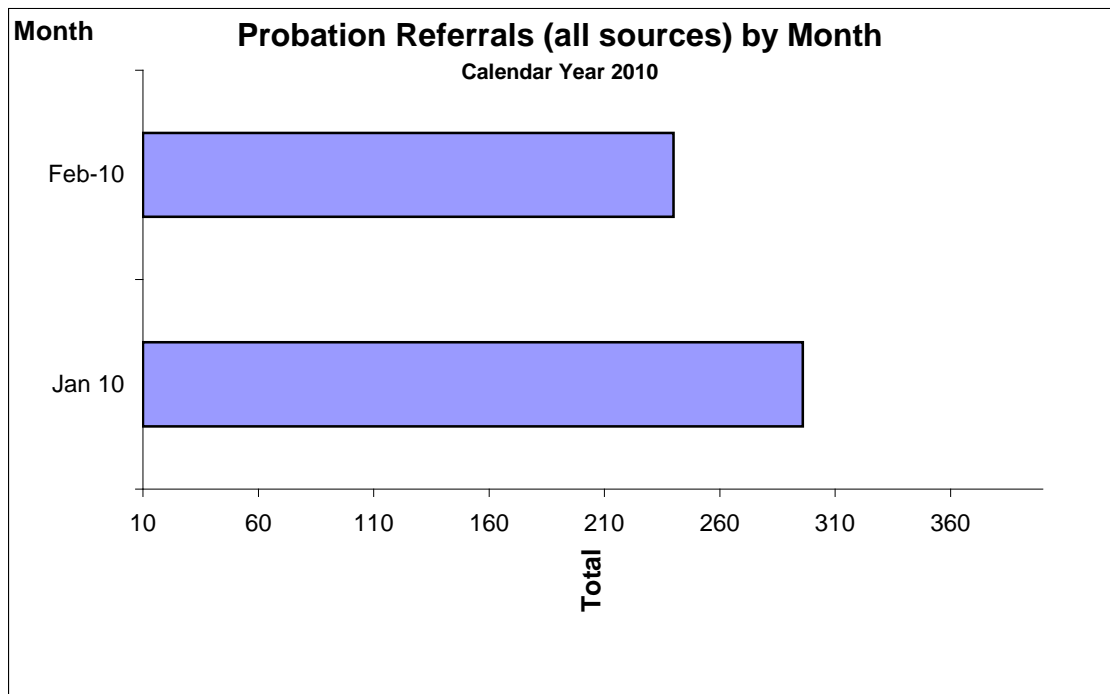
San Francisco Juvenile Probation Department

	Jan 10	Feb-10	Mar-10	Apr-10	May-09	Jun-10	Jul-10	Aug-10	Sep-09	Oct-10	Nov-10	Dec-10
Admissions	1	1										
Avg. Daily Pop.	11	12										

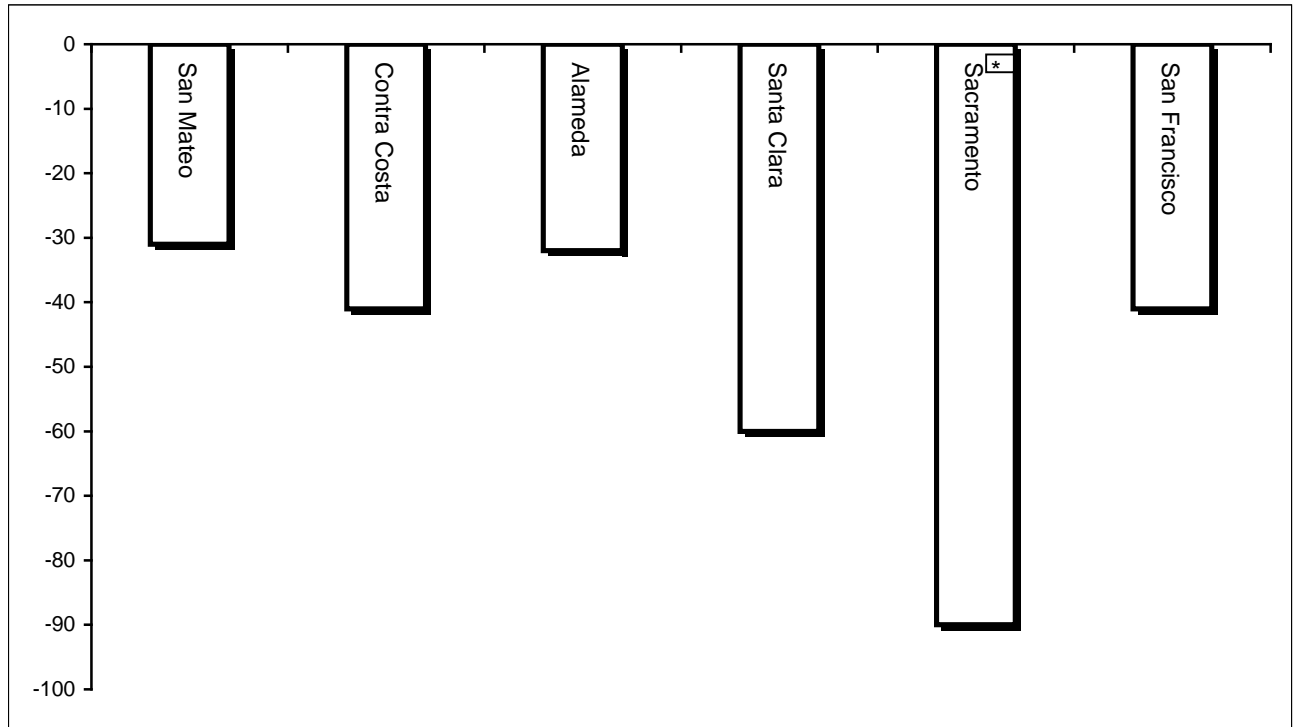


**Probation Referrals (all sources) by Month
(602 W&I)**

Jan 10	296
Feb-10	240
Mar-10	
Apr-10	
May-10	
Jun-10	
Jul-10	
Aug-10	
Sep-10	
Oct-10	
Nov-10	
Dec-10	



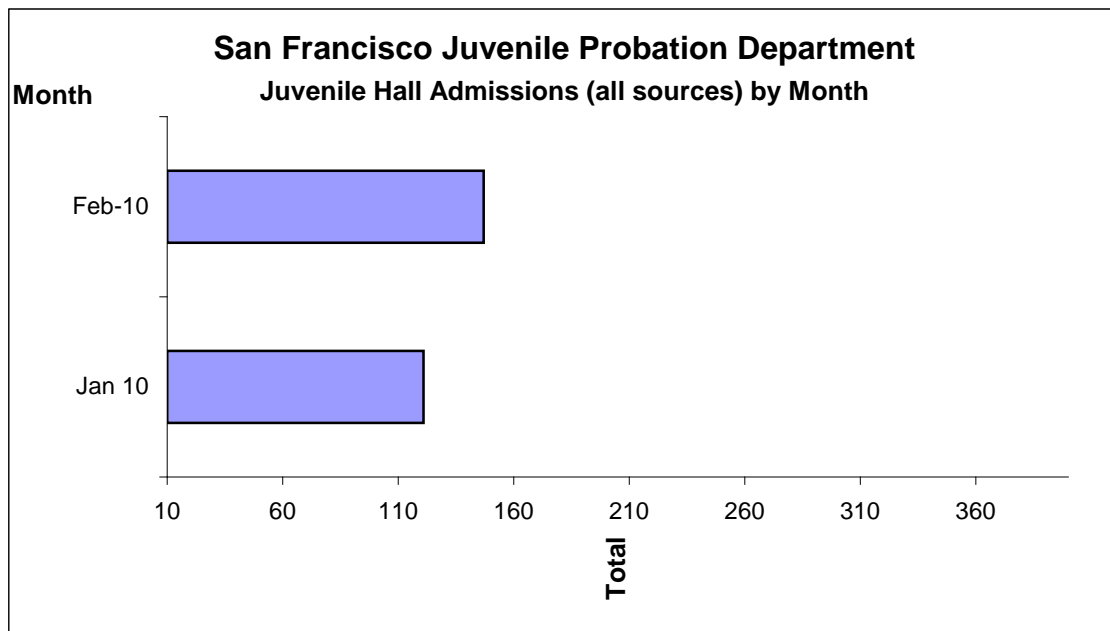
Bay Area Resident Juvenile Hall Comparison
Over/Under Capacity
on March 3rd, 2010



	Rated Capacity	Actual	Over/Under Capacity
San Mateo	180	149	-31
Contra Costa	240	199	-41
Alameda	280	248	-32
Santa Clara	360	300	-60
Sacramento	308	218	-90
San Francisco	150	109	-41

Juvenile Hall Admissions by Month Calendar Year 2010

Jan 10	121
Feb-10	147
Mar-10	
Apr-10	
May-10	
Jun-09	
Jul-10	
Aug-10	
Sep-10	
Oct-10	
Nov-10	
Dec-10	

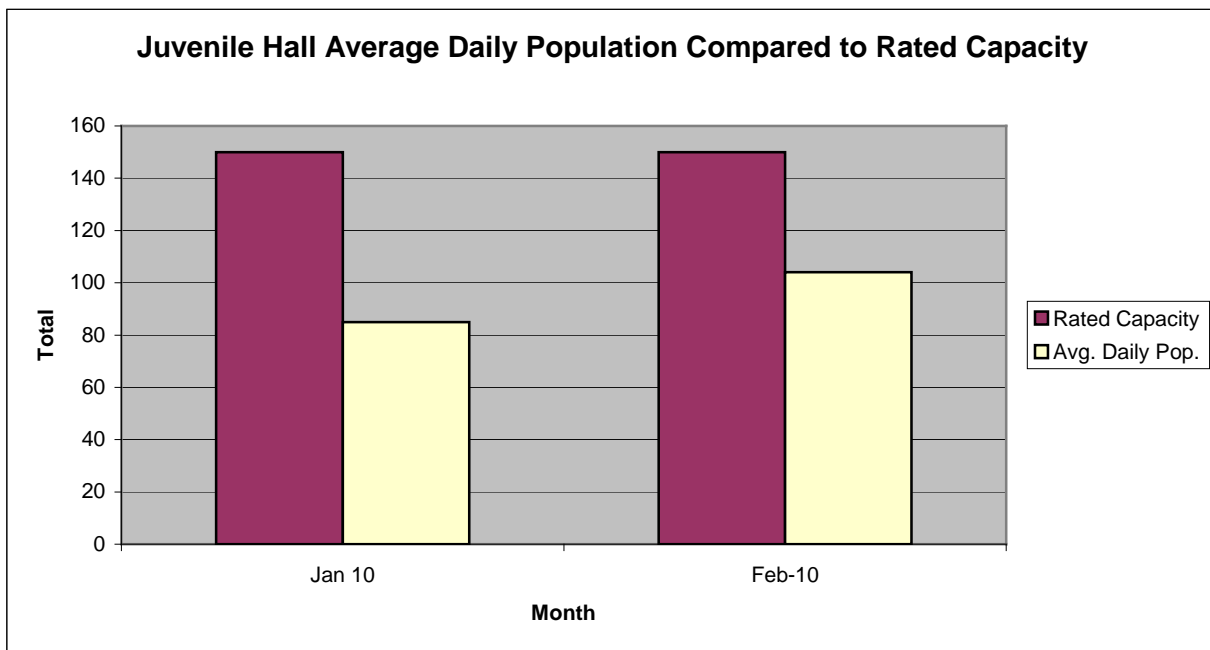


Characteristics of Juvenile Hall Detainees on February 28th, 2010

Detention Reason	Offense Code	MF*	Count	%
MURDER	187 (A) PC	F	3	2.70%
ATTEMPTED MURDER	664 /187 (A) PC	F	4	3.60%
SEXUAL PENETRATION WITH FORCE/ETC	289 (A)(1) PC	F	1	0.90%
CARJACKING	215 (A) PC	F	1	0.90%
ROBBERY	211 PC	F	26	23.42%
ASSAULT W/DEADLY WEAPON W/LIKELY GBI ON CUSTODIAL OFFICER	245.3 PC	F	1	0.90%
BURGLARY	459 PC	F	1	0.90%
HAVE FIREARM AT PUBLIC/ETC SCHOOL	626.9(B) PC	F	2	1.80%
FORCE OR ADW NOT FIREARM:GBI LIKELY	245 (A)(1) PC	F	10	9.01%
BATTERY W/SERIOUS BODILY INJURY	243 (D) PC	F	2	1.80%
POSSESS STOLEN VEHICLE/VESSEL/ETC	496 D (A) PC	F	1	0.90%
POSSESS FIREARM W/ALTERED IDENTIFICATION	12091 PC	F	1	0.90%
CARRY CONCEALED WEAPON IN VEHICLE W/PRIOR FELONY CONVICTION	12025 (A)(1) PC	F	1	0.90%
WILLFUL DISCHARGE FIREARM IN NEGLIGENT MANNER	246.3 PC	F	1	0.90%
OBSTRUCT/RESIST EXECUTIVE OFFICER	69 PC	F	1	0.90%
BURGLARY:SECOND DEGREE	459 PC	F	1	0.90%
RECEIVE/ETC KNOWN STOLEN PROPERTY	496 (A) PC	F	1	0.90%
POSSESS CONTROLLED SUBSTANCE	11377 (A) HS	F	1	0.90%
CARRY CONCEALED/LOADED F/ARM:NOT REG OWNER	12031 (A)(2)(F) PC	F	5	4.50%
MINOR ILLEGALLY POSSESS CONCEALED WEAPON WITH PRIOR	12101 (A)(1) PC	F	1	0.90%
VANDALISM (\$400 OR MORE)	594 (B)(1) PC	F	2	1.80%
EXHIBIT DEADLY WEAPON OTHER THAN FIREARM	417 (A)(1) PC	M	1	0.90%
OBSTRUCT/RESIST/ETC PUBLIC/PEACE OFFICER/EMERGENCY MED TECH	148 (A)(1) PC	M	2	1.80%
THREATEN CRIME WITH INTENT TO TERRORIZE	422 PC	M	1	0.90%
BURGLARY	459 PC	M	1	0.90%
VANDALISM:DAMAGE PROPERTY	594 (A)(2) PC	M	1	0.90%
ASSAULT	240 PC	M	1	0.90%
BATTERY	242 PC	F	1	0.90%
FAIL TO OBEY ORDER OF JUVENILE COURT 602 WI	777 (A)(2) WI	M	7	6.31%
CHANGE OF PLACEMENT/PLACEMENT FAILURE	737 WI	M	6	5.41%
VIOLATION(S) OF HOME SUPERVISION CONDITION	628.1 WI	M	7	6.31%
BENCH WARRANT	BENCH WARRANT XX	X	3	2.70%
WARRANT 602	WRNT602 XX	X	13	11.71%
*F=felony; M=Misdemeanor		Total	111	100.00%

San Francisco Juvenile Probation Department

	Jan 10	Feb-10	Mar-10	Apr-10	May-10	Jun-10	Jul-10	Aug-10	Sep-10	Oct-10	Nov-10	Dec-10
Rated Capacity	150	150										
Avg. Daily Pop.	85	104										



Juvenile Hall Average Length of Stay

For the Month of January 2010

¹Released

Range of Days	<i>1-10 days</i>	<i>11-20 days</i>	<i>21-30 days</i>	<i>30 or more days</i>	Total
# of Youth Released	56	31	16	14	117
% of Population	47.86%	26.50%	13.68%	11.97%	100%
# of Days	211	464	409	1162	2246
% of Total Days	9.39%	20.66%	18.21%	51.74%	100%
Average Length of Stay	3.77	14.97	25.56	83.00	19.20

²In Custody

Range of Days	<i>1-10 days</i>	<i>11-20 days</i>	<i>21-30 days</i>	<i>30 or more days</i>	Total
# of Youth Detained	20	15	11	32	78
% of Population	25.64%	19.23%	14.10%	41.03%	100%
# of Days	100	229	269	3802	4400
% of Total Days	2.27%	5.20%	6.11%	86.41%	100%
Average Length of Stay	5.00	15.27	24.45	118.81	56.41

Notes: Less than one day of stay is calculated as one day.

¹Length of stay is calculated according to release date for those who are released.

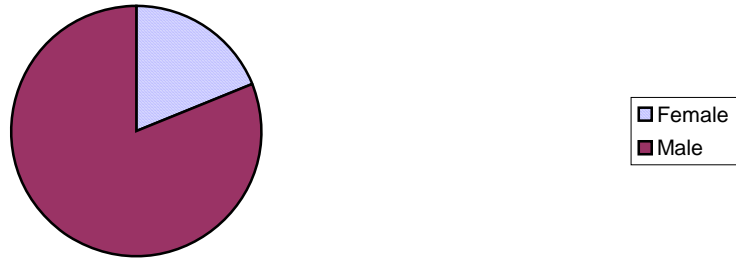
²For those still in custody, length of stay is calculated at the last day of the month.

Section III

Demographics

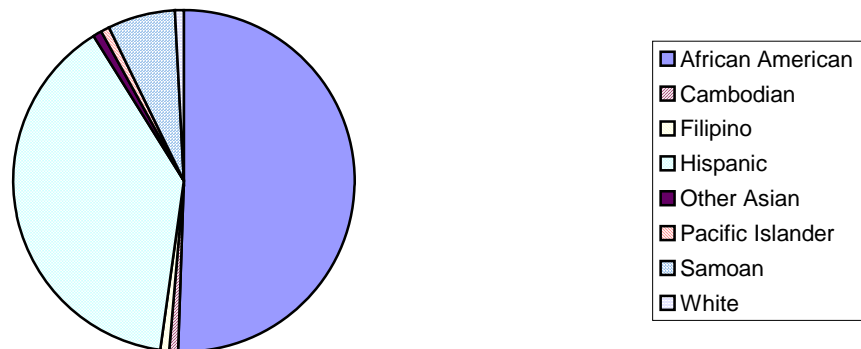
Gender	Frequency	Percent
Female	21	18.92%
Male	90	81.08%
Total	111	100.00%

**Demographic Characteristics
Of Juvenile Hall Detainees on 2/28/10 by Gender**

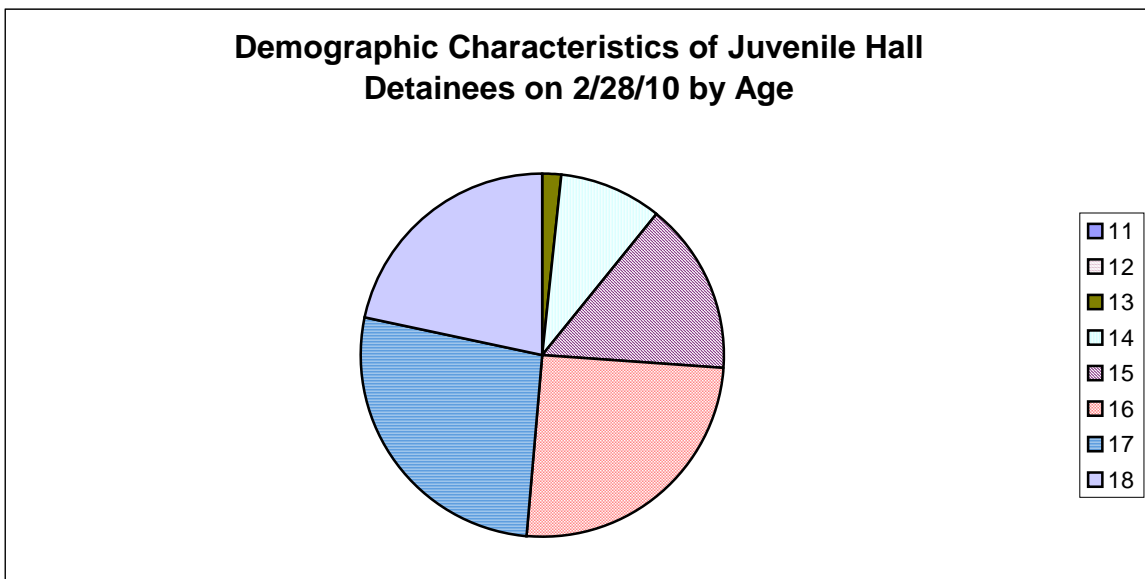


Race/Ethnic Origin	Frequency	Percent
African American	56	50.45%
Cambodian	1	0.90%
Filipino	1	0.90%
Hispanic	43	38.74%
Other Asian	1	0.90%
Pacific Islander	1	0.90%
Samoan	7	6.31%
White	1	0.90%
Total	111	100.00%

**Demographic Characteristics of Juvenile Hall Detainees on
2/28/10 by Race**

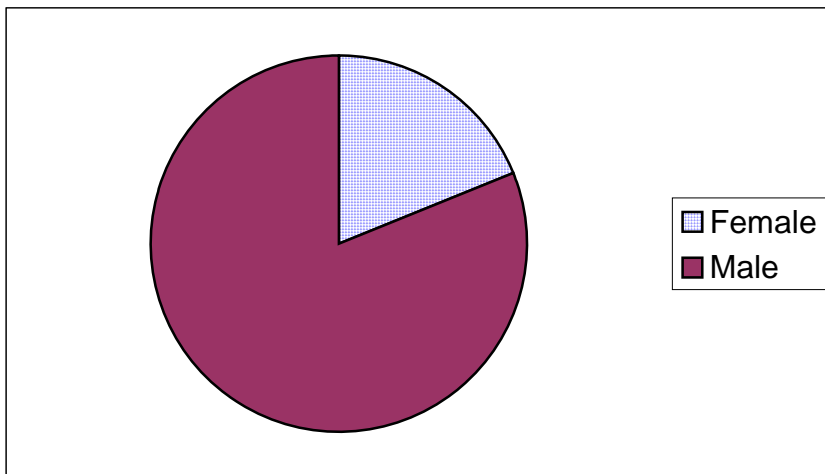


Age	Frequency	Percent
11	0	0.00%
12	0	0.00%
13	2	1.80%
14	10	9.01%
15	17	15.32%
16	28	25.23%
17	30	27.03%
18	24	21.62%
Total	111	100.00%



Demographic Characteristics of Juvenile Hall Detainees
on 2/28/2010
Age by Gender

Age	Female	Male	Total	
11	0	0	0	0.00%
12	0	0	0	0.00%
13	1	1	2	1.80%
14	2	8	10	9.01%
15	4	13	17	15.32%
16	4	24	28	25.23%
17	7	23	30	27.03%
18 and over	3	21	24	21.62%
Total	21	90	111	100.00%
	18.92%	81.08%	100.00%	



Demographic Characteristics
Of Juvenile Hall Detainees on February 28th, 2010

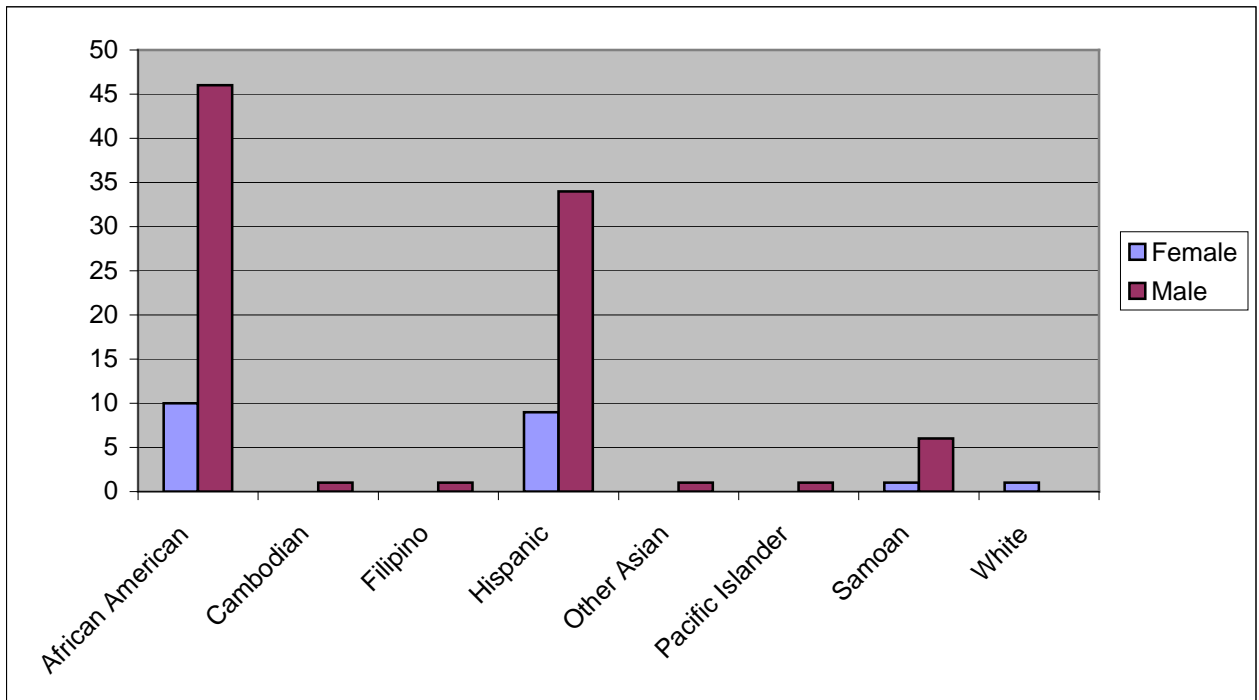
Geographic Residence of Youth	Count	%
Richmond	2	1.8%
Marina	0	0.0%
North of Market/Downtown	2	1.8%
Treasure Island/Yerba Buena Island	3	2.7%
Western Addition	9	8.1%
South of Market/Tenderloin	2	1.8%
Sunset	0	0.0%
Haight Ashbury/Castro/Upper Market	1	0.9%
Inner Mission	15	13.5%
Potrero	7	6.3%
Parkside	2	1.8%
Ingleside (West of Twin Peaks)	4	3.6%
Outer Mission	19	17.1%
Bayview	34	30.6%
Non-San Francisco and Unavailable	11	9.9%
Total	111	100.0%

Non-San Francisco and Unavailable	Count	%
Antioch	1	9.1%
Daly City	1	9.1%
Hillsdale	1	9.1%
Pittsburg	1	9.1%
Richmond	1	9.1%
San Leandro	1	9.1%
Santa Rosa	2	18.2%
Unavailable	3	27.3%
Total	11	100.0%

Demographic Characteristics
Of Juvenile Hall Detainees on February 28th, 2010

Race/Ethnic Origin by Gender

Race/Ethnicity	Female	Male	Total	%
African American	10	46	56	50.5%
Cambodian	0	1	1	0.9%
Filipino	0	1	1	0.9%
Hispanic	9	34	43	38.7%
Other Asian	0	1	1	0.9%
Pacific Islander	0	1	1	0.9%
Samoan	1	6	7	6.3%
White	1	0	1	0.9%
Total	21	90	111	100.0%

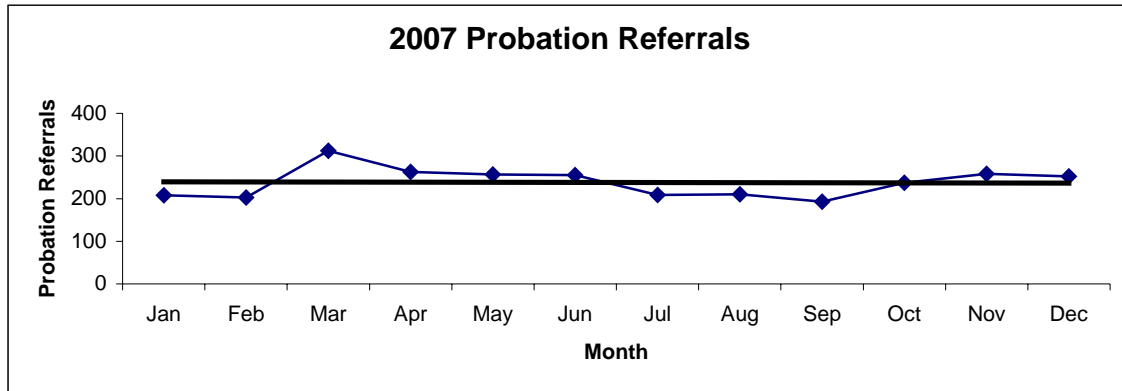


Section IV

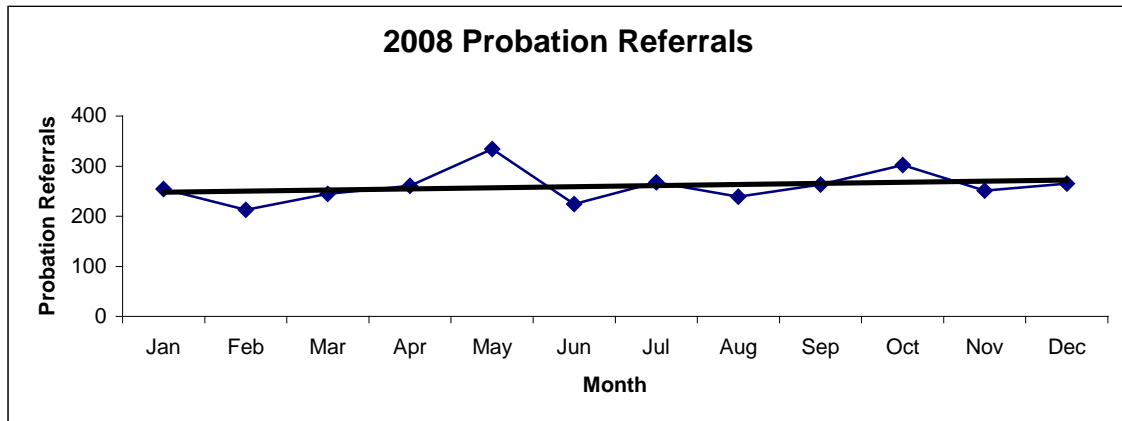
Historical Information

San Francisco Juvenile Probation Department
Probation Referrals (all sources) By Month
 (2007-2009)

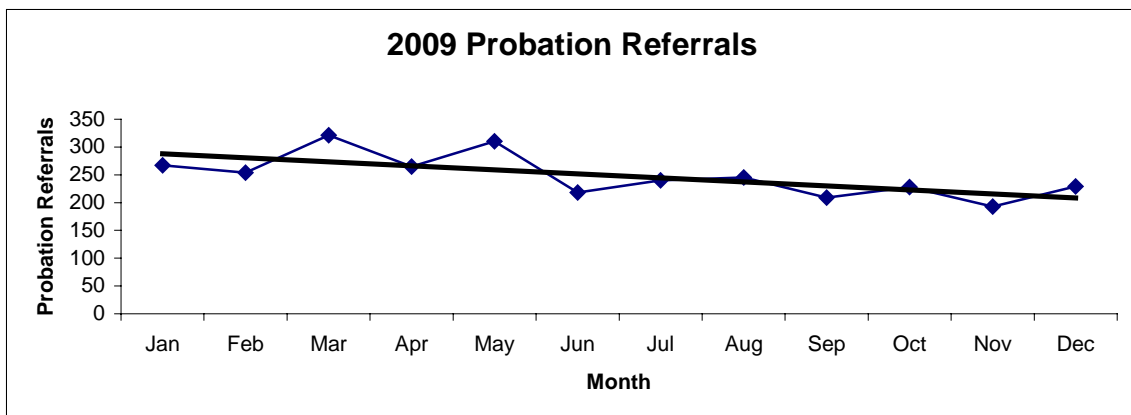
2007 Probation Referrals	Jan	Feb	Mar	Apr	May	Jun	Jul	Aug	Sep	Oct	Nov	Dec	Total
	208	203	312	263	257	255	209	210	193	237	258	252	2857



2008 Probation Referrals	Jan	Feb	Mar	Apr	May	Jun	Jul	Aug	Sep	Oct	Nov	Dec	Total
	254	213	245	261	334	224	268	239	263	302	251	265	3119

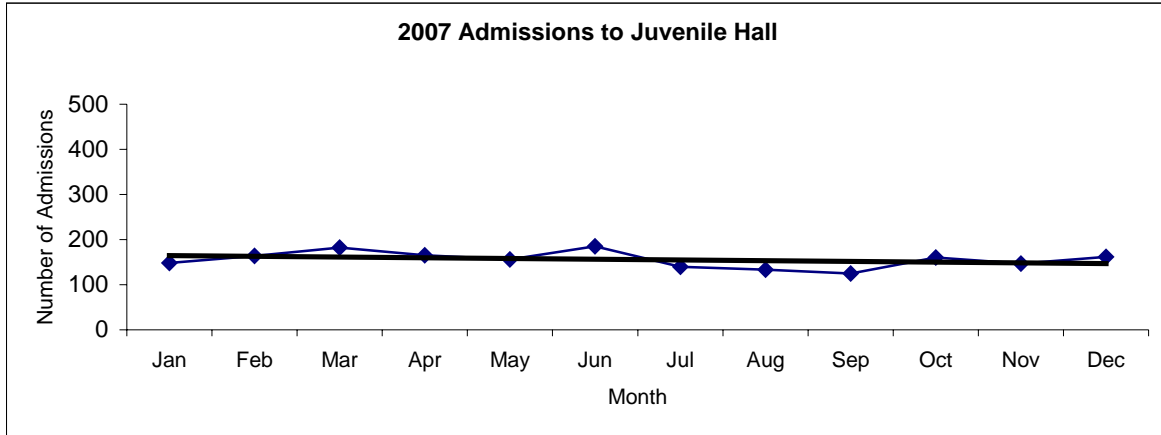


2009 Probation Referrals	Jan	Feb	Mar	Apr	May	Jun	Jul	Aug	Sep	Oct	Nov	Dec	Total
	267	254	321	265	310	218	240	245	209	228	193	229	2979

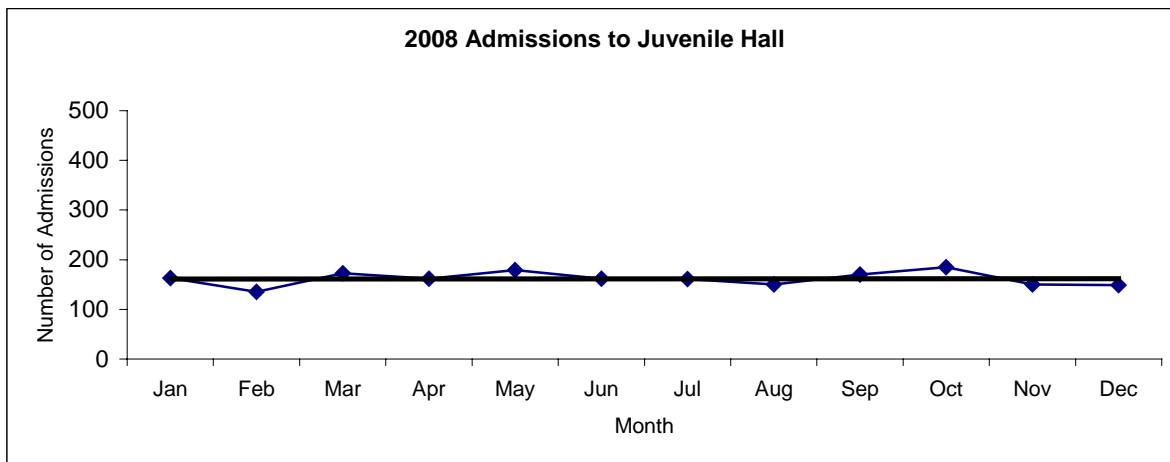


San Francisco Juvenile Probation
Juvenile Hall Admissions By Month
(2007-2009)

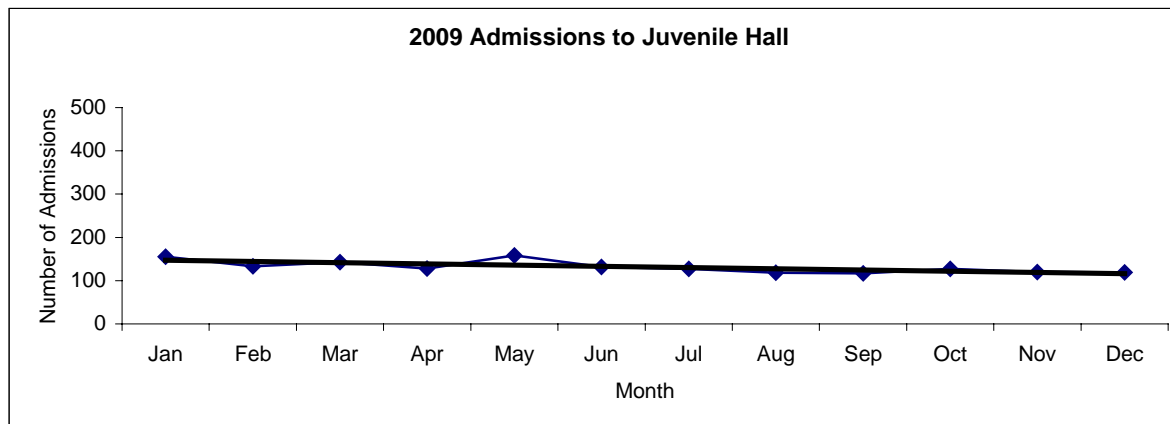
2007 Admissions	Jan	Feb	Mar	Apr	May	Jun	Jul	Aug	Sep	Oct	Nov	Dec	Total
	148	164	182	165	156	185	140	133	125	160	147	162	1867



2008 Admissions	Jan	Feb	Mar	Apr	May	Jun	Jul	Aug	Sep	Oct	Nov	Dec	Total
	163	135	173	162	179	162	161	150	170	185	150	149	1939

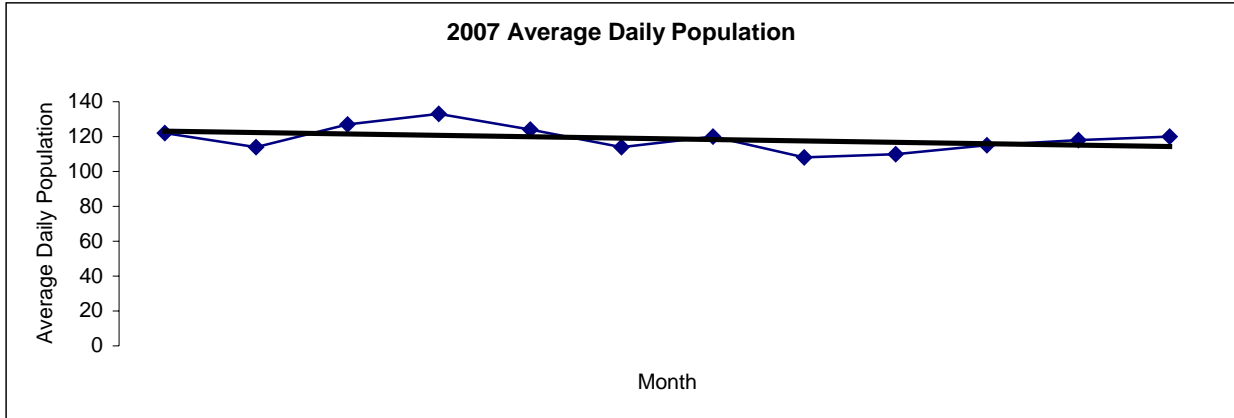


2009 Admissions	Jan	Feb	Mar	Apr	May	Jun	Jul	Aug	Sep	Oct	Nov	Dec	Total
	155	133	143	128	158	132	127	118	117	127	120	119	1577

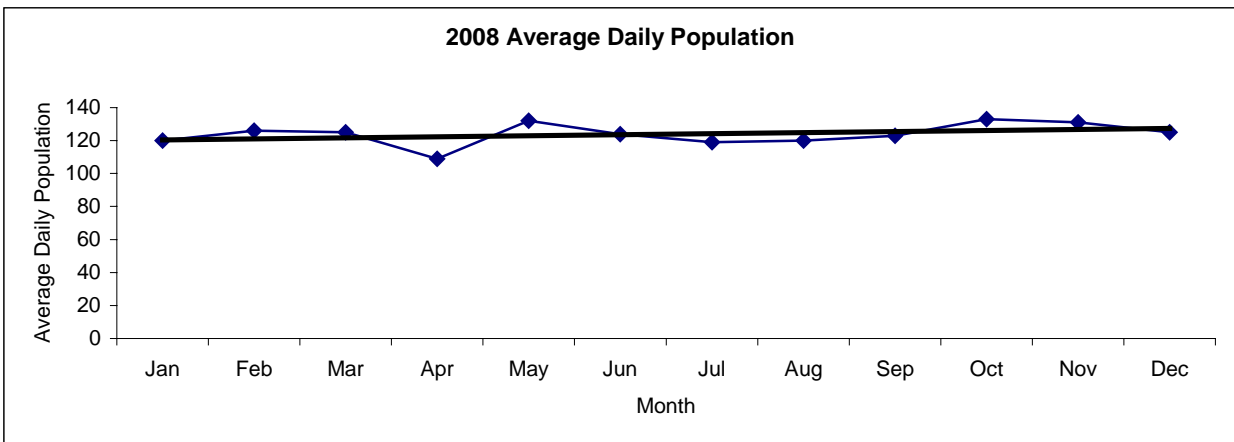


San Francisco Juvenile Probation
Juvenile Hall Average Daily Population By Month
 (2007-2009)

2007 Avg. Daily Pop.	Jan	Feb	Mar	Apr	May	Jun	Jul	Aug	Sep	Oct	Nov	Dec	Total
	122	114	127	133	124	114	120	108	110	115	118	120	119



2008 Avg. Daily Pop.	Jan	Feb	Mar	Apr	May	Jun	Jul	Aug	Sep	Oct	Nov	Dec	Total
	120	126	125	109	132	124	119	120	123	133	131	125	114



2009 Avg. Daily Pop.	Jan	Feb	Mar	Apr	May	Jun	Jul	Aug	Sep	Oct	Nov	Dec	Total
	107	119	117	127	127	114	112	108	105	101	95	77	109

