

City and County of San Francisco



Juvenile Probation Department

Monthly Report for October 2010

Presented to the Juvenile Probation Commission

November 10th, 2010

William P. Siffermann
Chief Probation Officer

Prepared by Jose Luis Perla
Information Technology Director
(415) 753-7686
jose.perla@sfgov.org

Table of Contents

Comparison Drug Charges and Other Criminal Offenses

Youth Admitted to Juvenile Hall for Drug Related Charges.....	1
Youth Admitted to Juvenile Hall for Other Criminal Offenses	
Demographics Characteristics	2
Youth Admitted to Juvenile Hall for Other Criminal Offenses	
Geographical Residence	3
Geographical Residence of Youth -GIS Map by Zip Code	4
Geographical Residence of Youth -GIS Map by Supervisorial District	5
Geographical Residence of Youth -GIS Map by SFPD District	6

Section II Current Month General Detail

Probation Referrals, Juvenile Admissions And Average Daily Population	4
Juvenile Hall Admissions and Average Daily Population.....	5
Commitments to out-of-home placement	6
Commitments to California Youth Authority	7
Log Cabin Ranch Admissions and Average Daily Population.....	8
Probation Referrals	9
Bay Area Resident Juvenile Hall Comparison	10
Juvenile Hall Admissions	11
Juvenile Hall Detainees by Detention Reason.....	12
Juvenile Hall Average Daily Population by Rated Capacity	13
Juvenile Hall Average Length of Stay	14

Section III Demographics

Juvenile Hall Detainees by Sex and Race/Ethnic Origin.....	15
Juvenile Hall Detainees by Age.....	16
Juvenile Hall Detainees by Age and Sex	17
Juvenile Hall Detainees by Geographic Residence of Youth.....	18
Juvenile Hall Detainees by Race/Ethnic Origin and Sex.....	19

Section IV
Historical Information

2007-2009 Probation Referrals20
2007-2009 Juvenile Hall Admissions21
2007-2009 Juvenile Hall Average Daily Population22



Section I

Summary Reports

Summary Report for the Month of October 2010

Juvenile Hall	<i>September 2009</i>	<i>September 2010</i>	<i>October 2009</i>	<i>October 2010</i>	<i>YTD 2009</i>	<i>YTD 2010</i>
Admissions	117	104	127	96	1346	1134
Average Daily Population	105	90	101	84	113	95
Average Length of Stay (Releases)	43.47	18.16	36.28	27.80	26.57	25.15
Average Length of Stay (In Custody)	75.74	63.09	75.74	68.30	77.21	59.46
Releases	131	104	133	107	1344	1131
Log Cabin Ranch						
Admissions:						
First Time Commitments	0	5	2	1	14	23
Recommitments	0	0	0	1	2	1
<i>Total</i>	0	5	2	2	16	24
Releases:						
Graduated	2	1	1	2	10	14
Escape	1	0	0	0	7	4
Other releases	1	1	0	1	16	6
<i>Total</i>	4	2	1	3	33	24
Average Daily Population	13	16	11	18	14	13

Summary Report for the Month of October 2010

Probation Services	<i>September 2010</i>	<i>October 2010</i>	<i>Year To Date 2010</i>
Probation Referrals	220	168	2181
Total Petitions including violation of probation	101	81	1002
Selected Court Dispositions:			
California Youth Authority	1	0	2
Log Cabin Ranch	4	3	25
Out of Home Placement	5	9	95
Ward Probation	28	25	255
Non-Ward Probation (725a WI)	1	3	36
Informal Probation (654 WI)	13	10	118
Violation of Probation Petitions Filed	27	15	168
California Youth Authority Monthly Count San Francisco County Juvenile Court Cases October 31st, 2010			
Category	Institutions	Parole	
Males			
White	0	1	
Hispanic	0	3	
African American	4	7	
Asian	0	0	
Native American	0	0	
Filipino	0	0	
Pacific Islander	1	0	
Other	0	0	
Total	5	11	
Females			
White	0	0	
Hispanic	1	0	
African American	0	1	
Asian	0	0	
Native American	0	0	
Filipino	0	0	
Pacific Islander	0	0	
Other	0	0	
Total	1	1	
Grand Total	6	12	

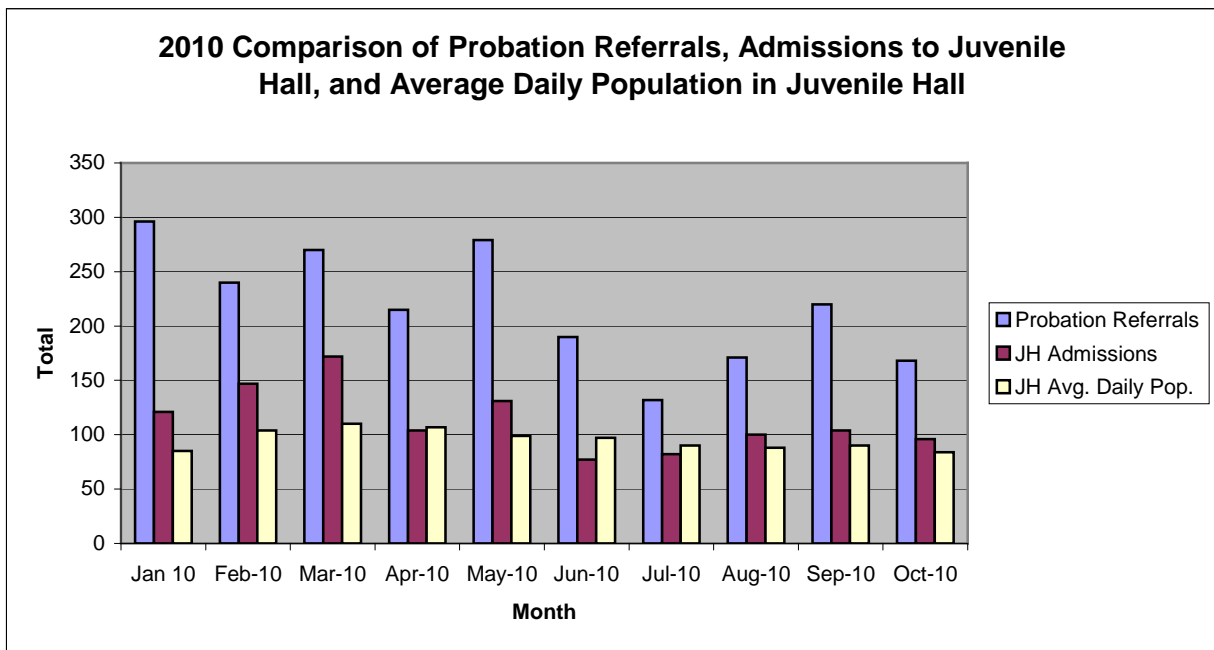
Summary Report for the Month of October 2010

Probation Services			
Active Cases by Units	September 2010	October 2010	October Average # Youth by PO
CARC	156	163	163
Intake Green (Custody Screening Investigation)	103	100	12
Intake Gold (Probation Services 1)	168	171	24
Probation Services 2	233	232	23
Probation Services 3	210	214	21
Probation Services 4	179	179	22
Special Services	13	13	3
<i>Total</i>	1,062	1,072	38
Total Active Intake Cases	435	437	
Total Probation/Supervision Cases	627	635	

Section II
Current Month
General Detail

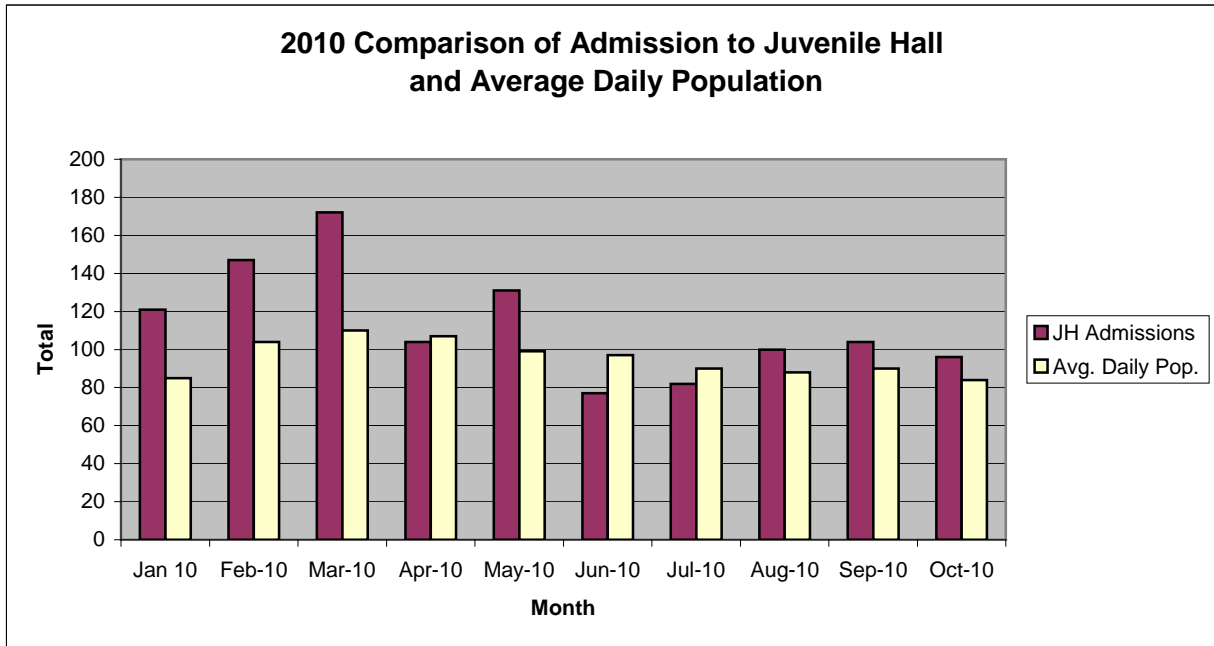
San Francisco Juvenile Probation Department

	Jan 10	Feb-10	Mar-10	Apr-10	May-10	Jun-10	Jul-10	Aug-10	Sep-10	Oct-10	Nov-10	Dec-10
Probation Referrals	296	240	270	215	279	190	132	171	220	168		
JH Admissions	121	147	172	104	131	77	82	100	104	96		
JH Avg. Daily Pop.	85	104	110	107	99	97	90	88	90	84		



San Francisco Juvenile Probation Department

	Jan 10	Feb-10	Mar-10	Apr-10	May-10	Jun-10	Jul-10	Aug-10	Sep-10	Oct-10	Nov-10	Dec-10
JH Admissions	121	147	172	104	131	77	82	100	104	96		
Avg. Daily Pop.	85	104	110	107	99	97	90	88	90	84		

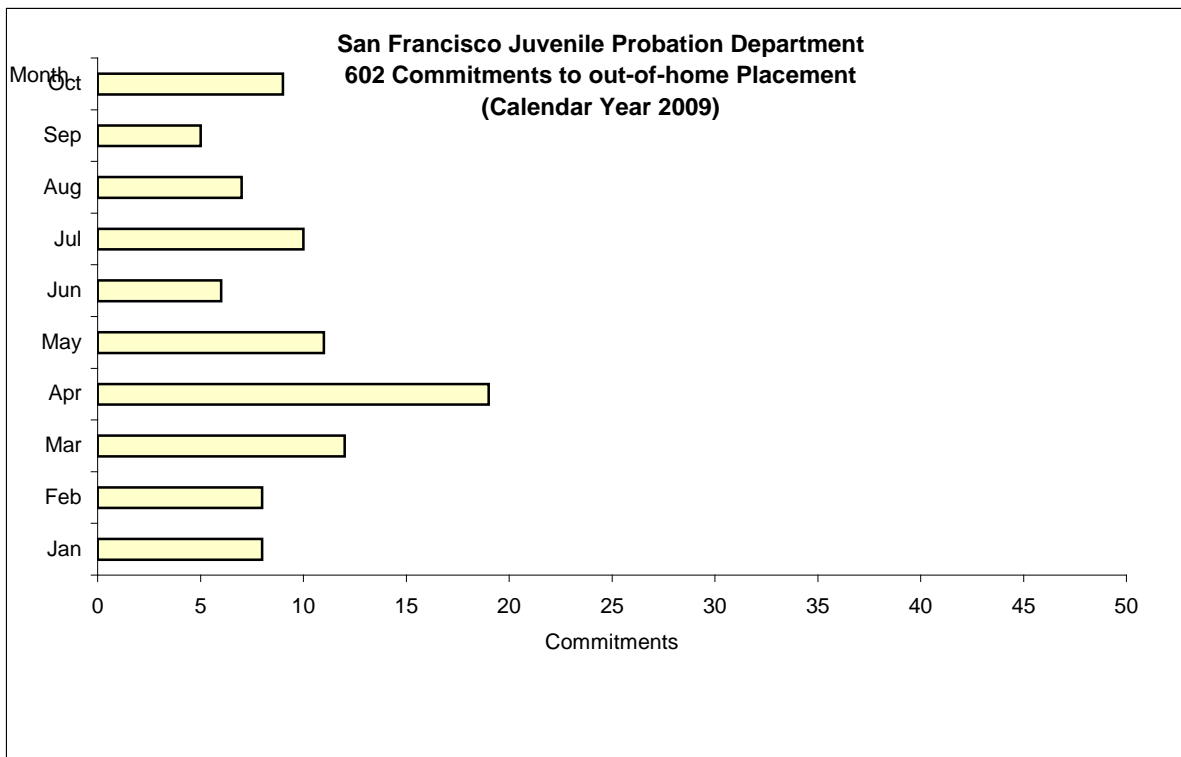


Out-of-Home Placement¹

Commitments of 602's

Calendar Year 2010

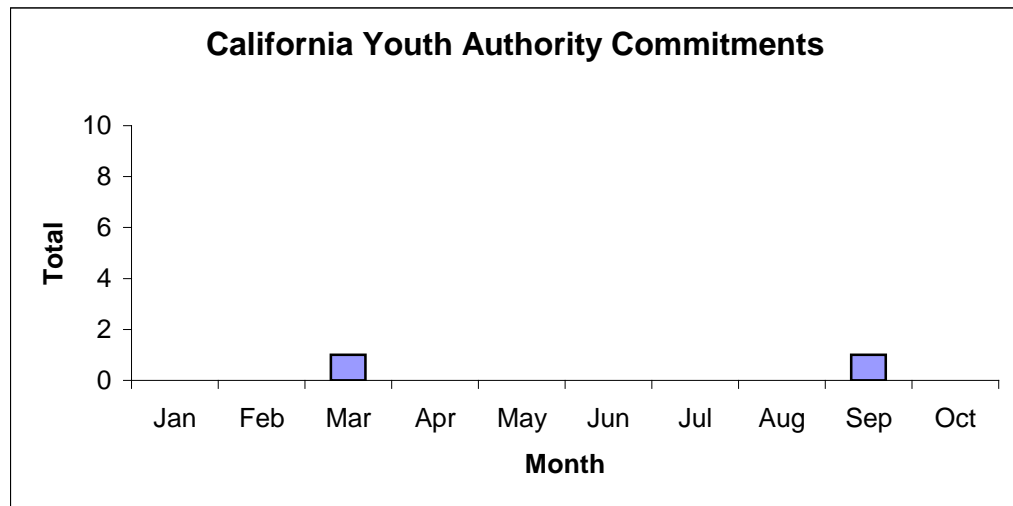
Commitments	Jan	Feb	Mar	Apr	May	Jun	Jul	Aug	Sep	Oct	Nov	Dec	Total
2010	8	8	12	19	11	6	10	7	5	9			95



¹ This report is based on 602 Commitments to out-of-home placements. If there is a 601 commitment, it will show as a footnote here. Figures are regularly updated to include reports from previous reporting periods.

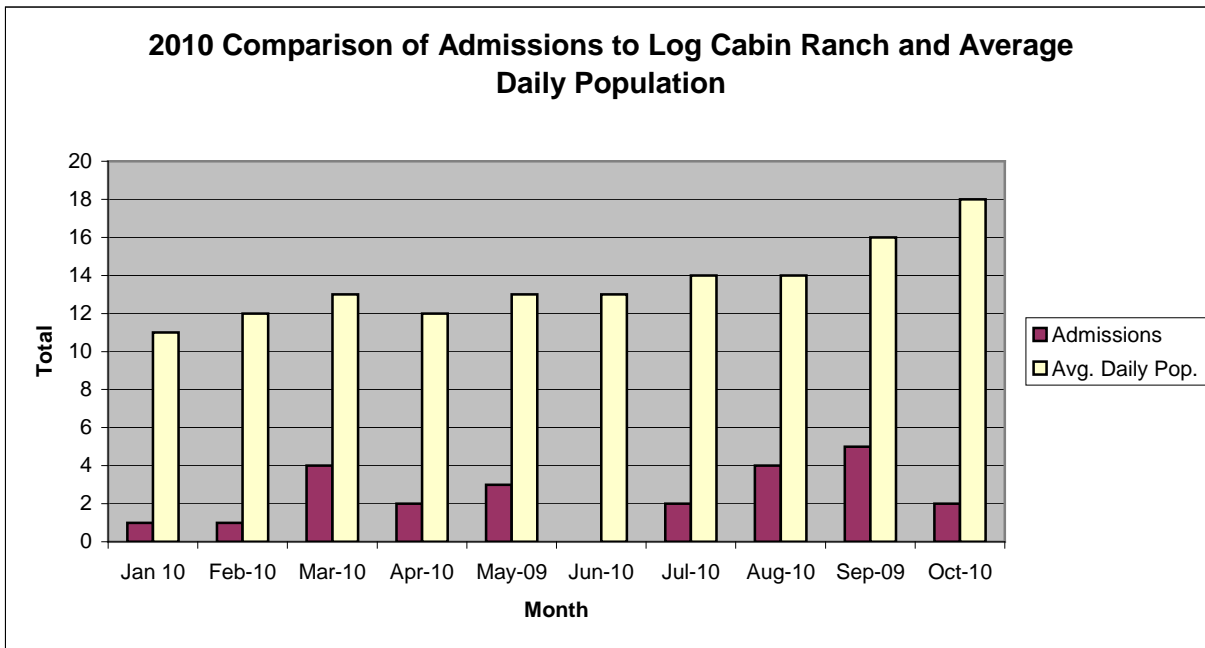
California Youth Authority
Commitments
(Calendar Year 2010)

Commitments	Jan	Feb	Mar	Apr	May	Jun	Jul	Aug	Sep	Oct	Nov	Dec	Total
2010	0	0	1	0	0	0	0	0	1	0			2



San Francisco Juvenile Probation Department

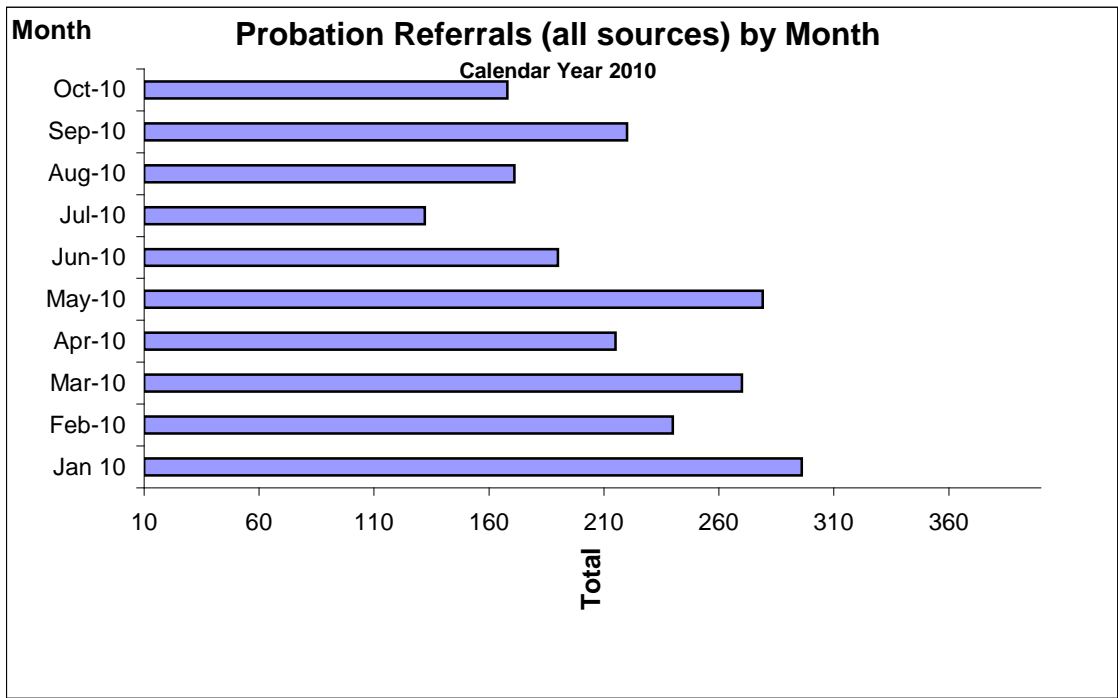
	Jan 10	Feb-10	Mar-10	Apr-10	May-09	Jun-10	Jul-10	Aug-10	Sep-09	Oct-10	Nov-10	Dec-10
Admissions	1	1	4	2	3	0	2	4	5	2		
Avg. Daily Pop.	11	12	13	12	13	13	14	14	16	18		



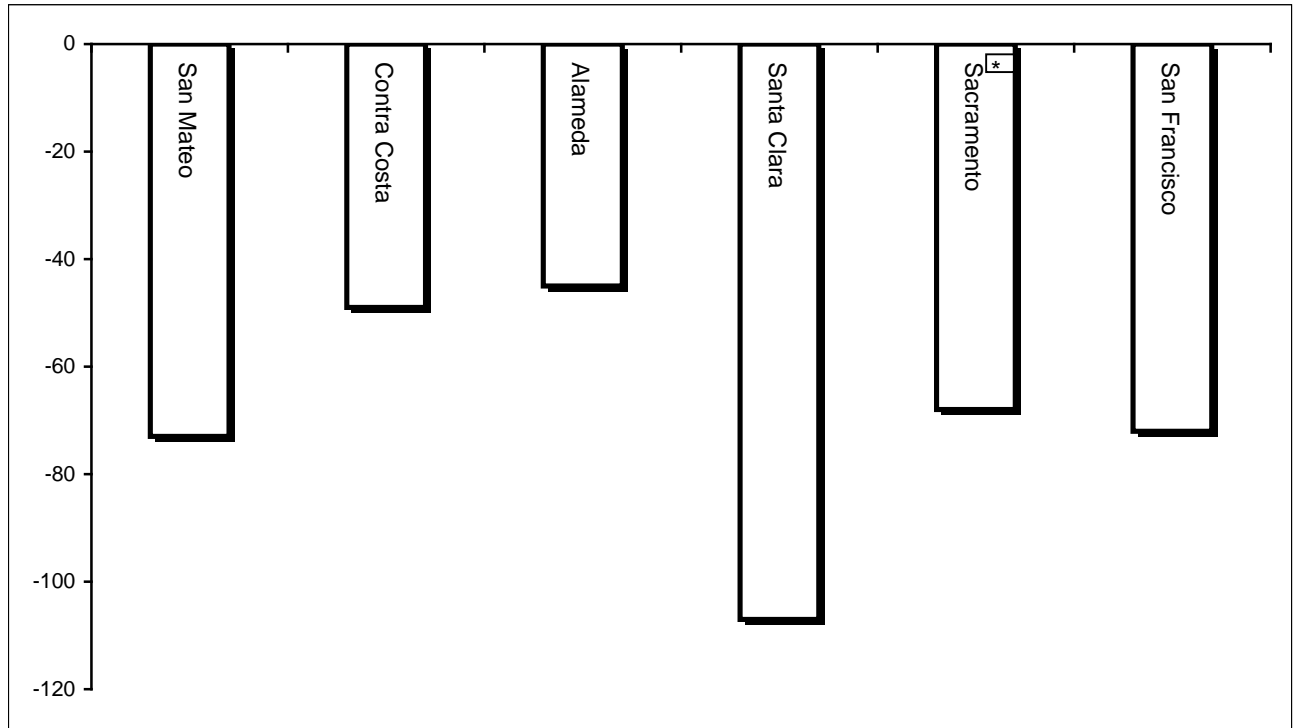
Probation Referrals by Month Calendar Year 2010

Probation Referrals (all sources) by Month (602 W&I)

Jan 10	296
Feb-10	240
Mar-10	270
Apr-10	215
May-10	279
Jun-10	190
Jul-10	132
Aug-10	171
Sep-10	220
Oct-10	168
Nov-10	
Dec-10	



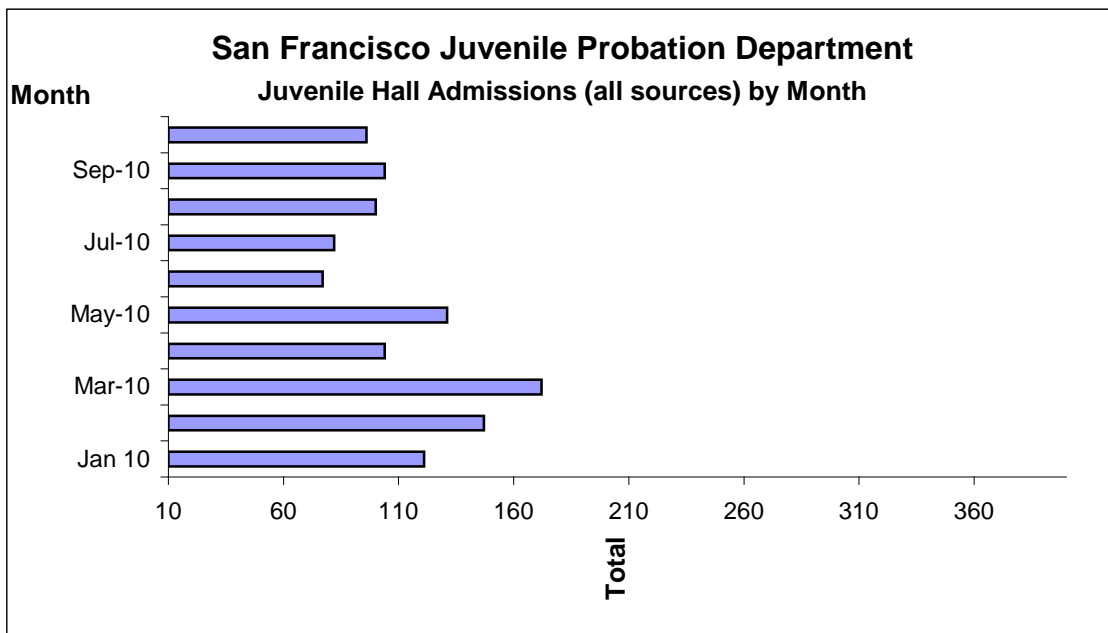
Bay Area Resident Juvenile Hall Comparison
Over/Under Capacity
on October 29th, 2010



	Rated Capacity	Actual	Over/Under Capacity
San Mateo	180	108	-73
Contra Costa	240	185	-49
Alameda	280	187	-45
Santa Clara	360	258	-107
Sacramento	308	274	-68
San Francisco	150	87	-72

Juvenile Hall Admissions by Month Calendar Year 2010

Jan 10	121
Feb-10	147
Mar-10	172
Apr-10	104
May-10	131
Jun-09	77
Jul-10	82
Aug-10	100
Sep-10	104
Oct-10	96
Nov-10	
Dec-10	



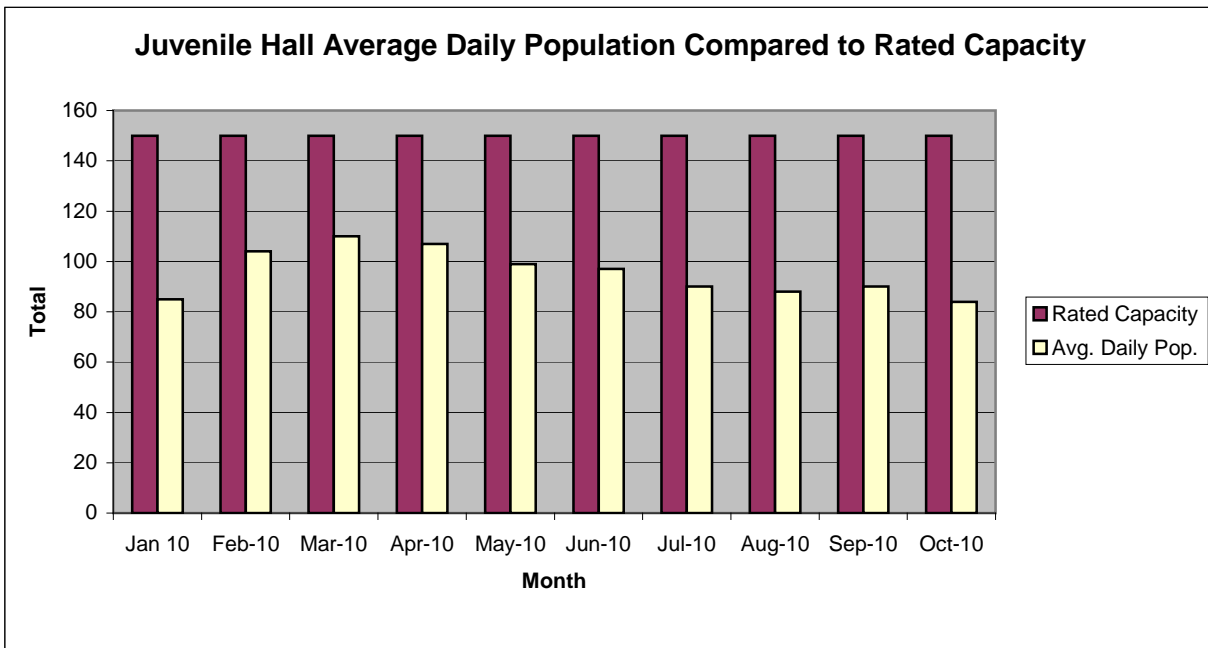
Characteristics of Juvenile Hall Detainees on October 31st, 2010

Detention Reason	Offense Code	MF*	Count	%
MURDER	187 (A) PC	F	2	2.50%
ATTEMPTED MURDER	664 /187 (A) PC	F	2	2.50%
KIDNAP TO COMMIT ROBBERY/RAPE/289 PC/ETC	209 (B)(1) PC	F	1	1.25%
CONTINUOUS SEXUAL ABUSE OF CHILD	288.5(A) PC	F	1	1.25%
SHOOT AT INHABITED DWELLING/VEHICLE/ETC	246 PC	F	2	2.50%
ROBBERY	211 PC	F	20	25.00%
TRANSPORT/SELL NARCOTIC/CONTROLLED SUBSTANCE	11352 (A) HS	F	1	1.25%
POSSESS/PURCHASE COCAINE BASE FOR SALE	11351.5 HS	F	1	1.25%
ARSON:STRUCTURE/FOREST LAND	451 (C) PC	F	1	1.25%
ASSAULT:DEADLY WEAPON OR FORCE:POSSIBLE GREAT BODILY INJ	245 (A) PC	F	1	1.25%
FORCE OR ADW NOT FIREARM:GBI LIKELY	245 (A)(1) PC	F	9	11.25%
POSSESS CONTROLLED SUBSTANCE FOR SALE	11378 HS	F	1	1.25%
CARRY CONCEALED WEAPON IN VEHICLE W/PRIOR FELONY CONVICTION	12025 (A)(1) PC	F	1	1.25%
SODOMY	286 (A) PC	F	1	1.25%
WILLFUL DISCHARGE FIREARM IN NEGLIGENT MANNER	246.3 PC	F	1	1.25%
THREATEN SCHOOL/PUBLIC OFFICER/EMPLOYEE	71 PC	F	1	1.25%
VIOLATE CIVIL RIGHTS:CAUSE VIOLENT INJURY/ETC	422.7(A) PC	F	1	1.25%
RECEIVE/ETC KNOWN STOLEN PROPERTY	496 (A) PC	F	1	1.25%
PERSONATE TO MAKE OTHER LIABLE	529.3 PC	F	1	1.25%
POSSESS CONTROLLED SUBSTANCE	11377 (A) HS	F	1	1.25%
POSSESS MARIJUANA/HASHISH	11357 (A) HS	F	1	1.25%
MINOR ILLEGALLY POSSESS LIVE AMMUNITION W/PRIOR	12101 (B)(1) PC	F	1	1.25%
VANDALISM (\$400 OR MORE)	594 (B)(1) PC	F	1	1.25%
MINOR ATTEMPT ESCAPE/ESCAPE COUNTY FACILITY	871 (A) WI	M	2	2.50%
VANDALISM (\$400 OR MORE)	594 (B)(1) PC	M	1	1.25%
TOUCH PERSON INTIMATELY AGAINST WILL FOR SEXUAL AROUSAL/ETC	243.4 (E)(1) PC	M	1	1.25%
PETTY THEFT	484 (A) PC	M	1	1.25%
DISORDERLY CONDUCT:PROSTITUTION	647 (B) PC	M	1	1.25%
FAIL TO OBEY ORDER OF JUVENILE COURT 602 WI	777 (A)(2) WI	M	4	5.00%
CHANGE OF PLACEMENT/PLACEMENT FAILURE	737 WI	M	3	3.75%
VIOLATION(S) OF HOME SUPERVISION CONDITION	628.1 WI	M	1	1.25%
BENCH WARRANT	BENCH WARRANT		2	2.50%
ARREST WARRANT	WRNT602		7	8.75%
COURT ORDER	CTORD 602		4	5.00%
		Total	80	100.00%

*F=Felony, M=Misdemeanor

San Francisco Juvenile Probation Department

	Jan 10	Feb-10	Mar-10	Apr-10	May-10	Jun-10	Jul-10	Aug-10	Sep-10	Oct-10	Nov-10	Dec-10
Rated Capacity	150	150	150	150	150	150	150	150	150	150	150	150
Avg. Daily Pop.	85	104	110	107	99	97	90	88	90	84		



Juvenile Hall Average Length of Stay

For the Month of October 2010

¹Released

Range of Days	<i>1-10 days</i>	<i>11-20 days</i>	<i>21-30 days</i>	<i>30 or more days</i>	Total
# of Youth Released	58	12	13	24	107
% of Population	54.21%	11.21%	12.15%	22.43%	100%
# of Days	216	171	353	2235	2975
% of Total Days	7.26%	5.75%	11.87%	75.13%	100%
Average Length of Stay	3.72	14.25	27.15	93.13	27.80

²In Custody

Range of Days	<i>1-10 days</i>	<i>11-20 days</i>	<i>21-30 days</i>	<i>30 or more days</i>	Total
# of Youth Detained	19	14	9	38	80
% of Population	23.75%	17.50%	11.25%	47.50%	100%
# of Days	111	190	219	4944	5464
% of Total Days	2.03%	3.48%	4.01%	90.48%	100%
Average Length of Stay	5.84	13.57	24.33	130.11	68.30

Notes: Less than one day of stay is calculated as one day.

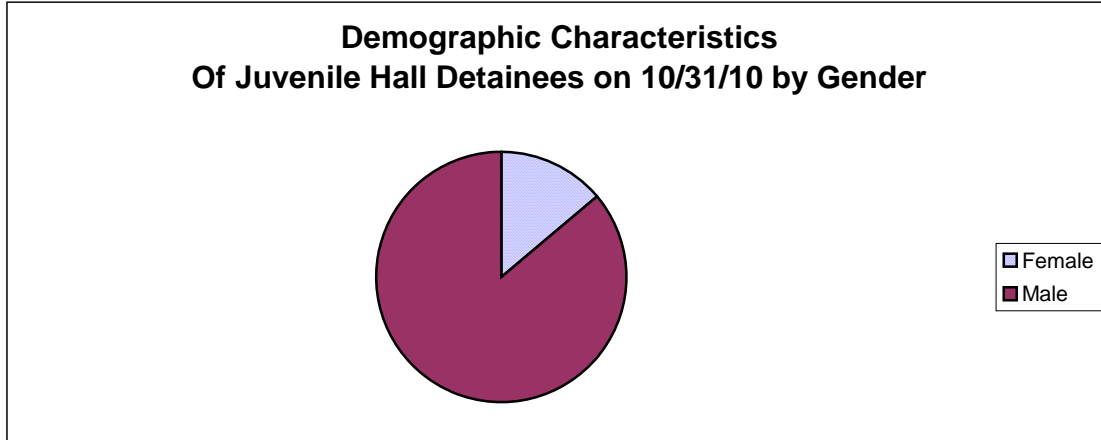
¹Length of stay is calculated according to release date for those who are released.

²For those still in custody, length of stay is calculated at the last day of the month.

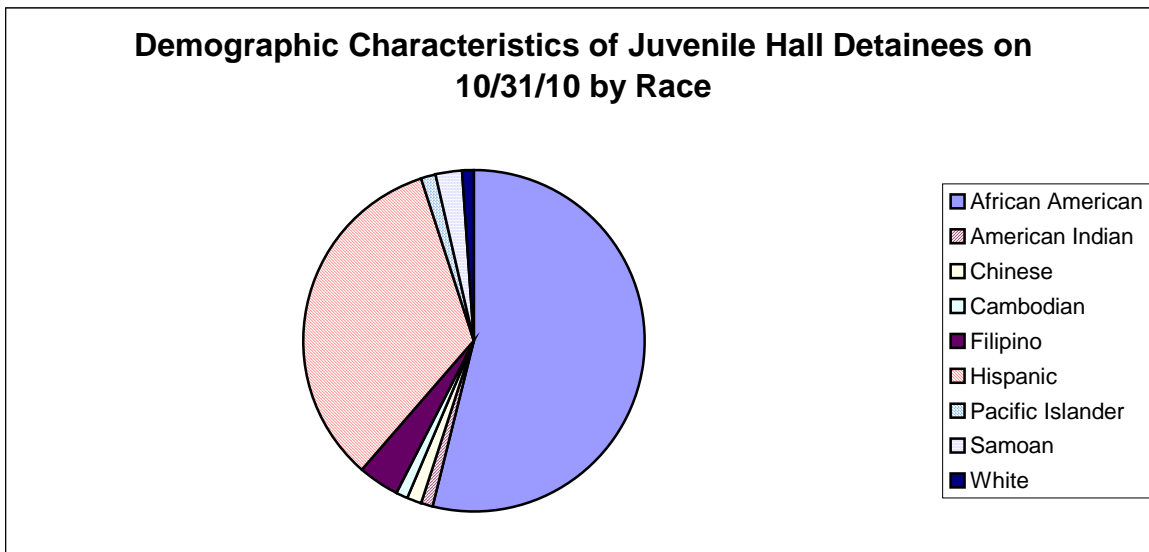
Section III

Demographics

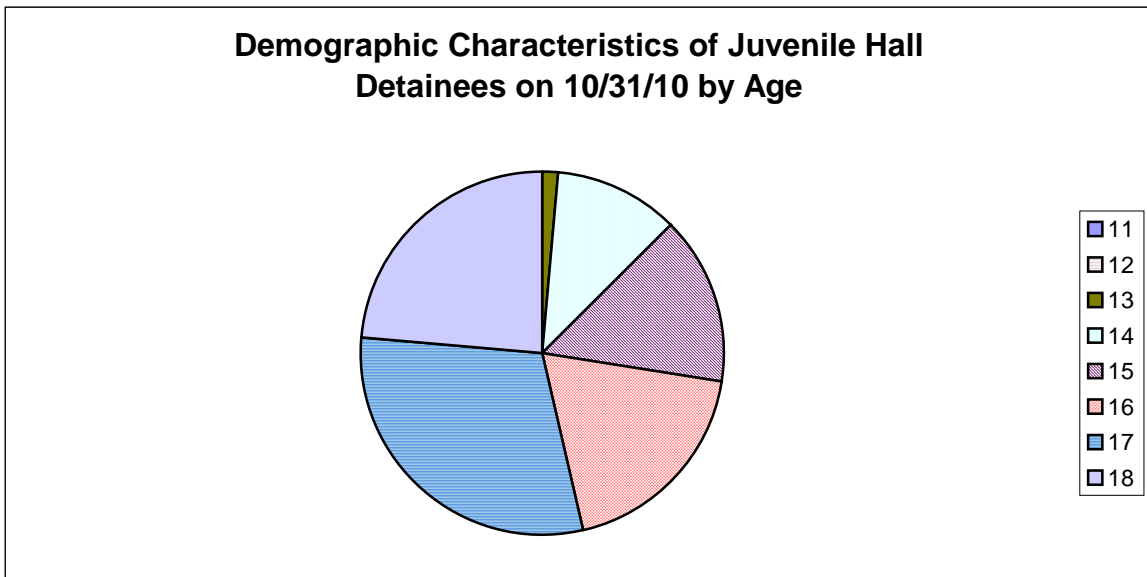
Gender	Frequency	Percent
Female	11	13.75%
Male	69	86.25%
Total	80	100.00%



Race/Ethnic Origin	Frequency	Percent
African American	43	53.75%
American Indian	1	1.25%
Chinese	1	1.25%
Cambodian	1	1.25%
Filipino	3	3.75%
Hispanic	27	33.75%
Pacific Islander	1	1.25%
Samoan	2	2.50%
White	1	1.25%
Total	80	100.00%

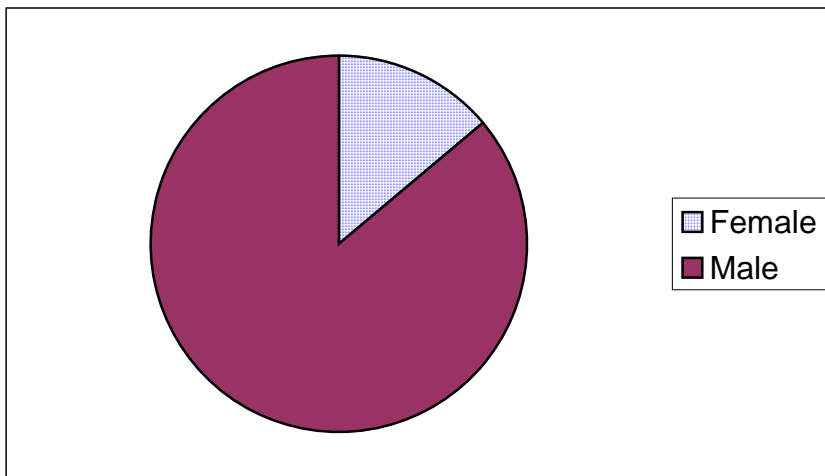


Age	Frequency	Percent
11	0	0.00%
12	0	0.00%
13	1	1.25%
14	9	11.25%
15	12	15.00%
16	15	18.75%
17	24	30.00%
18	19	23.75%
Total	80	100.00%



Demographic Characteristics of Juvenile Hall Detainees
on 10/31/2010
Age by Gender

Age	Female	Male	Total	
11	0	0	0	0.00%
12	0	0	0	0.00%
13	1	0	1	1.25%
14	0	9	9	11.25%
15	1	11	12	15.00%
16	4	11	15	18.75%
17	1	23	24	30.00%
18 and over	4	15	19	23.75%
Total	11	69	80	100.00%
	13.75%	86.25%	100.00%	



Demographic Characteristics
Of Juvenile Hall Detainees on October 31st, 2010

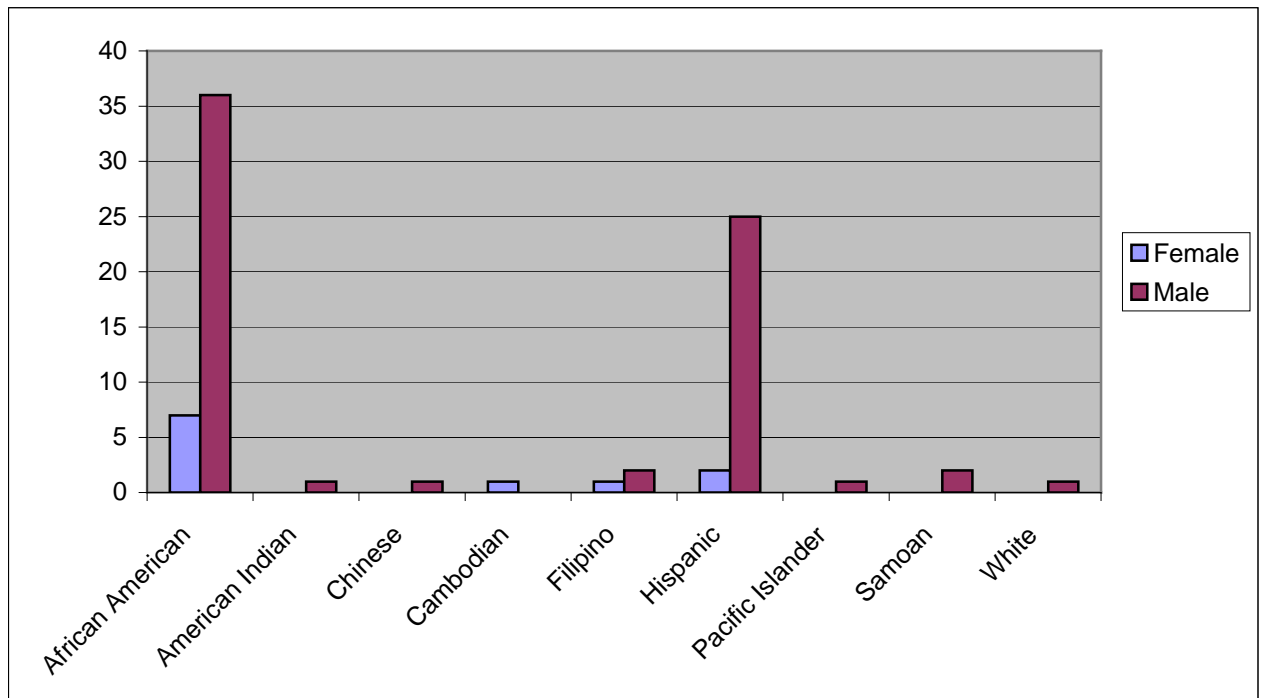
Geographic Residence of Youth	Count	%
Richmond	4	5.0%
Marina	0	0.0%
North of Market/Downtown	2	2.5%
Treasure Island/Yerba Buena Island	2	2.5%
Western Addition	5	6.3%
South of Market/Tenderloin	0	0.0%
Sunset	1	1.3%
Haight Ashbury/Castro/Upper Market	1	1.3%
Inner Mission	9	11.3%
Potrero	1	1.3%
Parkside	0	0.0%
Ingleside (West of Twin Peaks)	4	5.0%
Outer Mission	17	21.3%
Bayview	23	28.8%
Non-San Francisco and Unavailable	11	13.8%
Total	80	100.0%

Non-San Francisco and Unavailable	Count	%
Oakland	2	18.2%
San Leandro	1	9.1%
Santa Rosa	2	18.2%
Unavailable	6	54.5%
Total	11	100.0%

Demographic Characteristics
Of Juvenile Hall Detainees on October 31st, 2010

Race/Ethnic Origin by Gender

Race/Ethnicity	Female	Male	Total	%
African American	7	36	43	53.8%
American Indian	0	1	1	1.3%
Chinese	0	1	1	1.3%
Cambodian	1	0	1	1.3%
Filipino	1	2	3	3.8%
Hispanic	2	25	27	33.8%
Pacific Islander	0	1	1	1.3%
Samoan	0	2	2	2.5%
White	0	1	1	1.3%
Total	11	69	80	100.0%

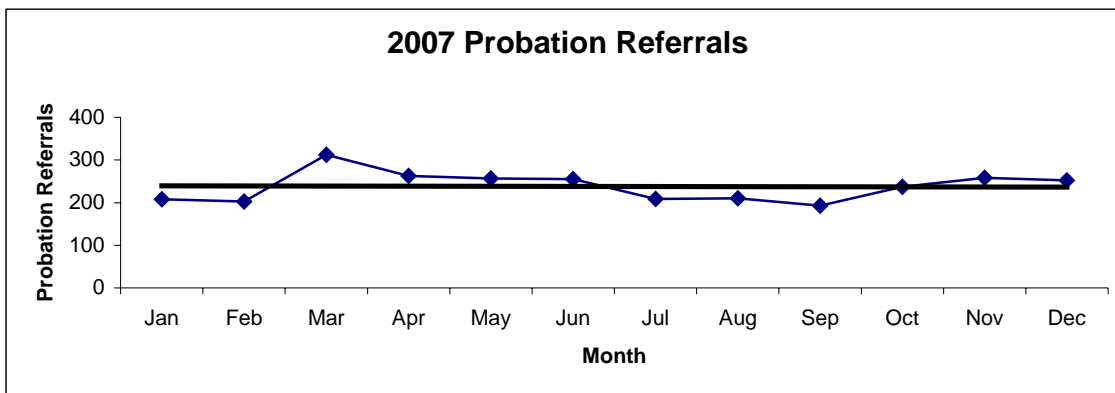


Section IV

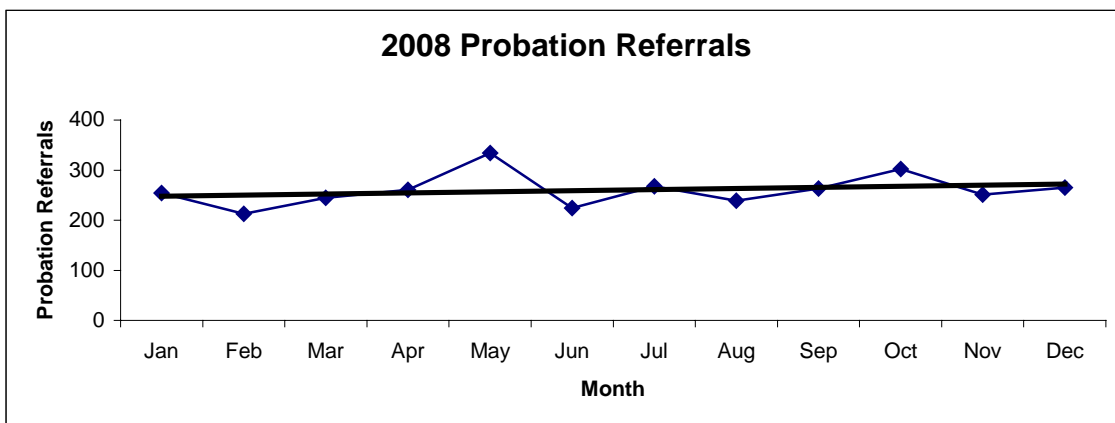
Historical Information

San Francisco Juvenile Probation Department
Probation Referrals (all sources) By Month
(2007-2009)

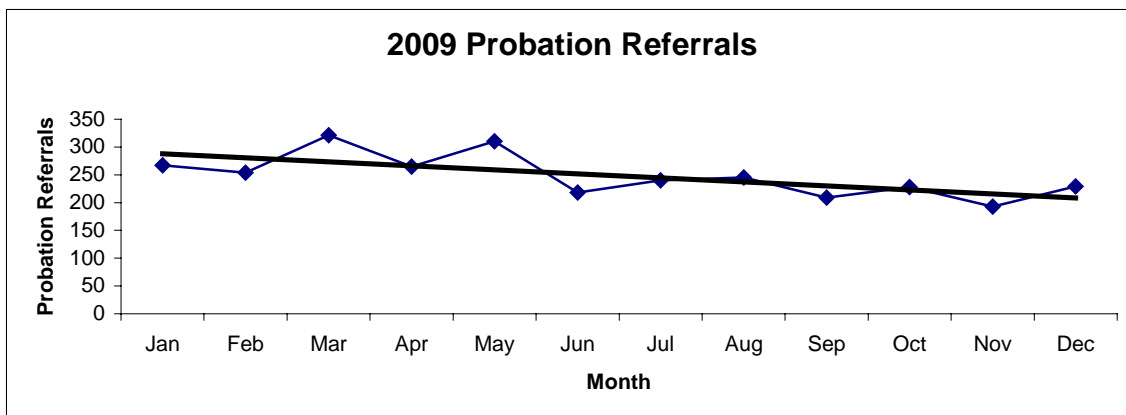
2007 Probation Referrals	Jan	Feb	Mar	Apr	May	Jun	Jul	Aug	Sep	Oct	Nov	Dec	Total
	208	203	312	263	257	255	209	210	193	237	258	252	2857



2008 Probation Referrals	Jan	Feb	Mar	Apr	May	Jun	Jul	Aug	Sep	Oct	Nov	Dec	Total
	254	213	245	261	334	224	268	239	263	302	251	265	3119

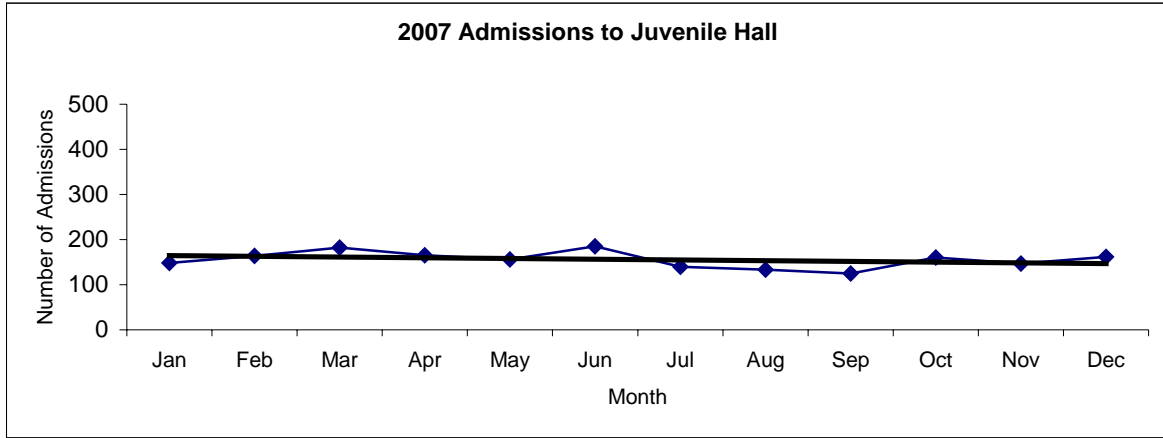


2009 Probation Referrals	Jan	Feb	Mar	Apr	May	Jun	Jul	Aug	Sep	Oct	Nov	Dec	Total
	267	254	321	265	310	218	240	245	209	228	193	229	2979

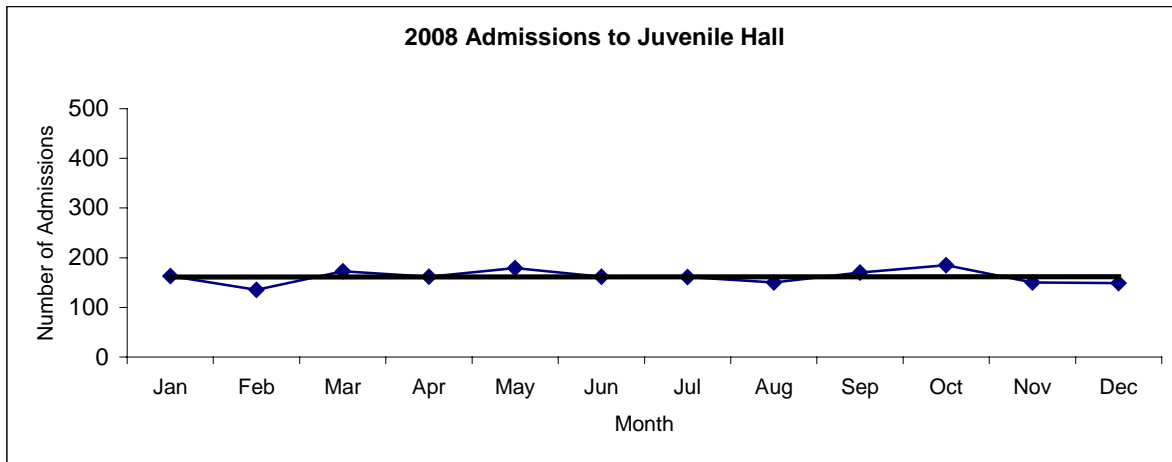


**San Francisco Juvenile Probation
Juvenile Hall Admissions By Month
(2007-2009)**

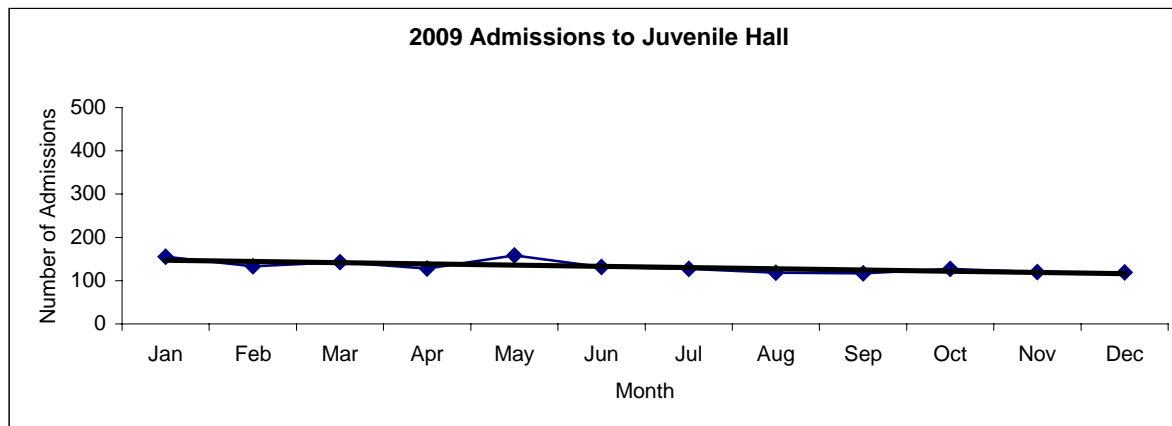
2007 Admissions	Jan	Feb	Mar	Apr	May	Jun	Jul	Aug	Sep	Oct	Nov	Dec	Total
	148	164	182	165	156	185	140	133	125	160	147	162	1867



2008 Admissions	Jan	Feb	Mar	Apr	May	Jun	Jul	Aug	Sep	Oct	Nov	Dec	Total
	163	135	173	162	179	162	161	150	170	185	150	149	1939

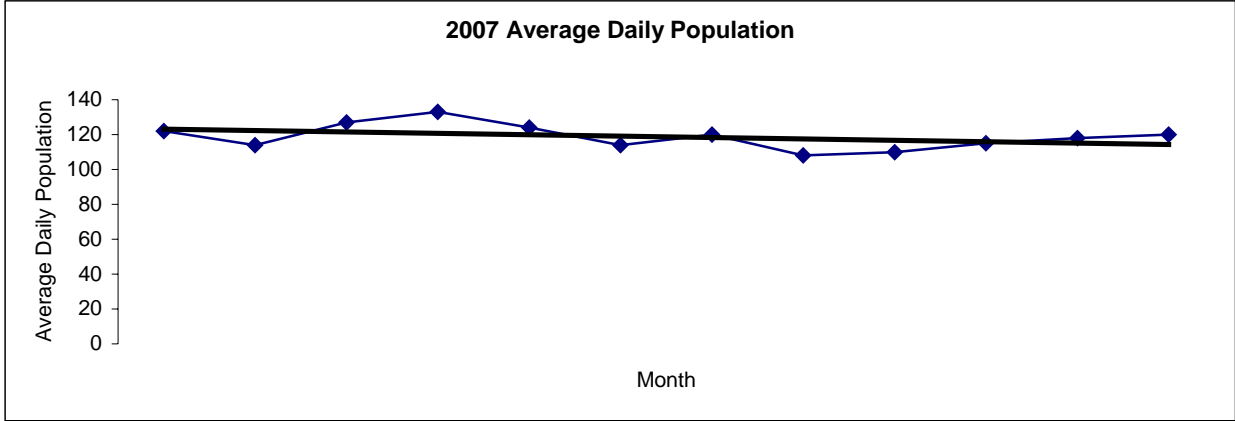


2009 Admissions	Jan	Feb	Mar	Apr	May	Jun	Jul	Aug	Sep	Oct	Nov	Dec	Total
	155	133	143	128	158	132	127	118	117	127	120	119	1577

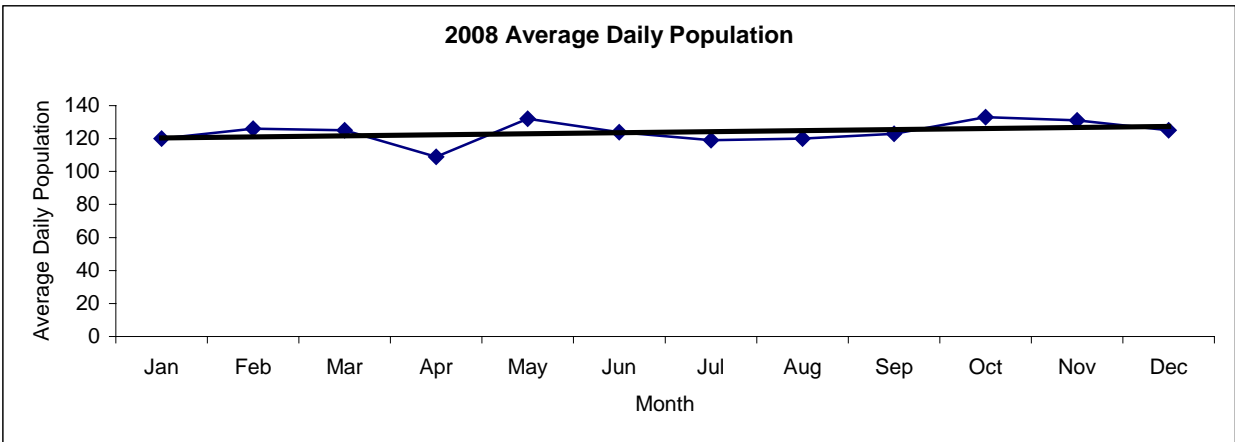


San Francisco Juvenile Probation
Juvenile Hall Average Daily Population By Month
 (2007-2009)

2007 Avg. Daily Pop.	Jan	Feb	Mar	Apr	May	Jun	Jul	Aug	Sep	Oct	Nov	Dec	Total
	122	114	127	133	124	114	120	108	110	115	118	120	119



2008 Avg. Daily Pop.	Jan	Feb	Mar	Apr	May	Jun	Jul	Aug	Sep	Oct	Nov	Dec	Total
	120	126	125	109	132	124	119	120	123	133	131	125	114



2009 Avg. Daily Pop.	Jan	Feb	Mar	Apr	May	Jun	Jul	Aug	Sep	Oct	Nov	Dec	Total
	107	119	117	127	127	114	112	108	105	101	95	77	109

