

City and County of San Francisco



Juvenile Probation Department

Monthly Report for January 2011

Presented to the Juvenile Probation Commission

February 9th, 2011

William P. Siffermann
Chief Probation Officer

Prepared by Jose Luis Perla
Information Technology Director
(415) 753-7686
jose.perla@sfgov.org

Table of Contents

Section I Summary Reports

Juvenile Hall, Log Cabin Ranch Summary Statistics	1
Probation Services Summary and California Youth Authority Statistics	2
Active Cases by Units	3

Section II Current Month General Detail

Probation Referrals, Juvenile Admissions And Average Daily Population	4
Juvenile Hall Admissions and Average Daily Population	5
Commitments to out-of-home placement	6
Commitments to California Youth Authority	7
Log Cabin Ranch Admissions and Average Daily Population	8
Probation Referrals	9
Juvenile Hall And Log Cabin Ranch Incident Report	10
Bay Area Resident Juvenile Hall Comparison	11
Juvenile Hall Admissions	12
Juvenile Hall Detainees by Detention Reason	13
Juvenile Hall Average Daily Population by Rated Capacity	14
Juvenile Hall Average Length of Stay	15

Section III Demographics

Juvenile Hall Detainees by Sex and Race/Ethnic Origin	16
Juvenile Hall Detainees by Age	17
Juvenile Hall Detainees by Age and Sex	18
Juvenile Hall Detainees by Geographic Residence of Youth	19
Juvenile Hall Detainees by Race/Ethnic Origin and Sex	20

Section IV

Historical Information

2008-2010 Probation Referrals	21
2008-2010 Juvenile Hall Admissions	22
2008-2010 Juvenile Hall Average Daily Population	23

Section I

Summary Reports

Summary Report for the Month of January 2011

Juvenile Hall	<i>December 2009</i>	<i>December 2010</i>	<i>January 2010</i>	<i>January 2011</i>	<i>YTD 2010</i>	<i>YTD 2011</i>
Admissions	119	111	121	120	121	120
Average Daily Population	77	92	85	91	85	91
Average Length of Stay (Releases)	31.62	19.96	19.20	32.10	19.20	32.10
Average Length of Stay (In Custody)	53.89	60.10	56.41	46.46	54.41	46.46
Releases	135	112	117	105	117	105
Log Cabin Ranch						
Admissions:						
First Time Commitments	2	2	1	1	1	1
Recommitments	0	0	0	0	0	0
<i>Total</i>	2	2	1	1	1	1
Releases:						
Graduated	0	0	3	3	3	3
Escape	0	0	0	0	0	0
Other releases	1	1	0	0	0	0
<i>Total</i>	1	1	3	3	3	3
Average Daily Population	13	23	11	22	11	22

Summary Report for the Month of January 2011

Probation Services	December 2010	January 2011	Year To Date 2011
Probation Referrals	188	204	204
Total Petitions including violation of probation	82	109	109
Selected Court Dispositions:			
California Youth Authority	0	0	0
Log Cabin Ranch	0	1	1
Out of Home Placement	16	10	10
Ward Probation	28	17	17
Non-Ward Probation (725a WI)	3	5	5
Informal Probation (654 WI)	10	21	21
Violation of Probation Petitions Filed	13	17	17
California Youth Authority Monthly Count San Francisco County Juvenile Court Cases January 31 st , 2011			
Category	Institutions	Parole	
Males			
White	0	1	
Hispanic	0	2	
African American	5	7	
Asian	0	0	
Native American	0	0	
Filipino	0	0	
Pacific Islander	1	0	
Other	0	0	
Total	6	10	
Females			
White	0	0	
Hispanic	1	0	
African American	0	1	
Asian	0	0	
Native American	0	0	
Filipino	0	0	
Pacific Islander	0	0	
Other	0	0	
Total	1	1	
Grand Total	7	11	

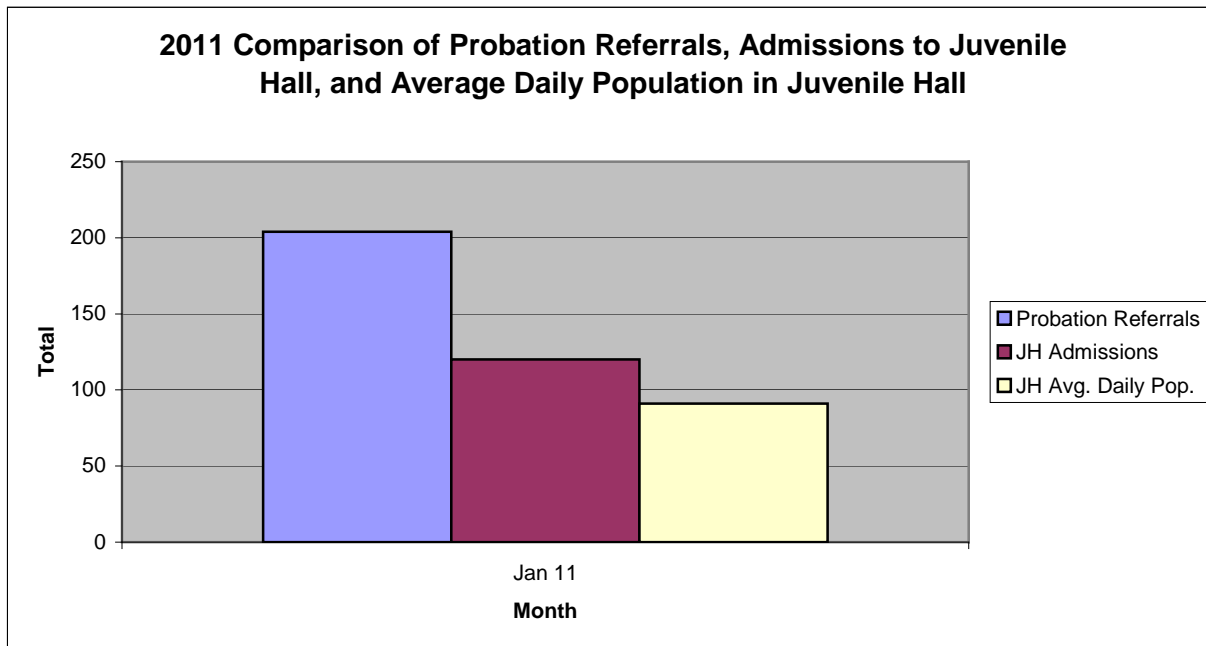
Summary Report for the Month of January 2011

Probation Services			
Active Cases by Units	December 2010	January 2011	January Average # Youth by PO
CARC	176	186	186
Intake Green (Custody Screening Investigation)	111	116	14
Intake Gold (Probation Services 1)	173	183	26
Probation Services 2	226	211	21
Probation Services 3	200	196	19
Probation Services 4	186	179	22
Special Services	11	11	2
<i>Total</i>	1,083	1,082	41
Total Active Intake Cases	468	490	
Total Probation/Supervision Cases	615	592	

Section II
Current Month
General Detail

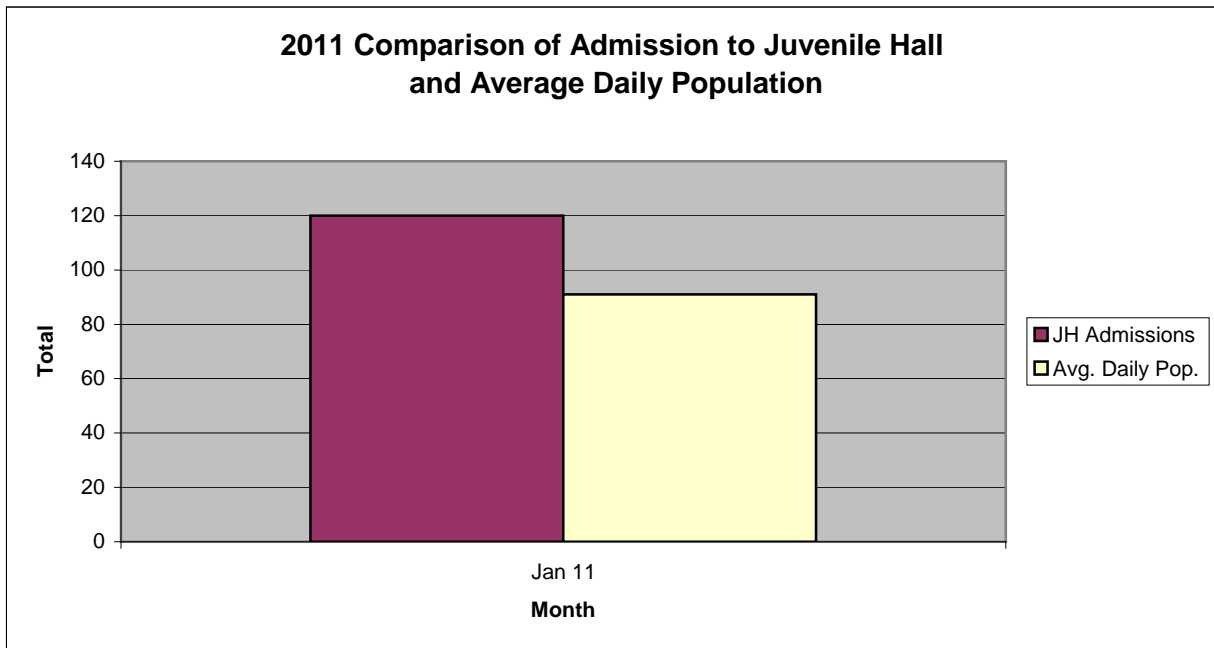
San Francisco Juvenile Probation Department

	Jan 11	Feb-11	Mar-11	Apr-11	May-11	Jun-11	Jul-11	Aug-11	Sep-11	Oct-11	Nov-11	Dec-11
Probation Referrals	204											
JH Admissions	120											
JH Avg. Daily Pop.	91											



San Francisco Juvenile Probation Department

	Jan 11	Feb-11	Mar-11	Apr-11	May-11	Jun-11	Jul-11	Aug-11	Sep-11	Oct-11	Nov-11	Dec-11
JH Admissions	120											
Avg. Daily Pop.	91											

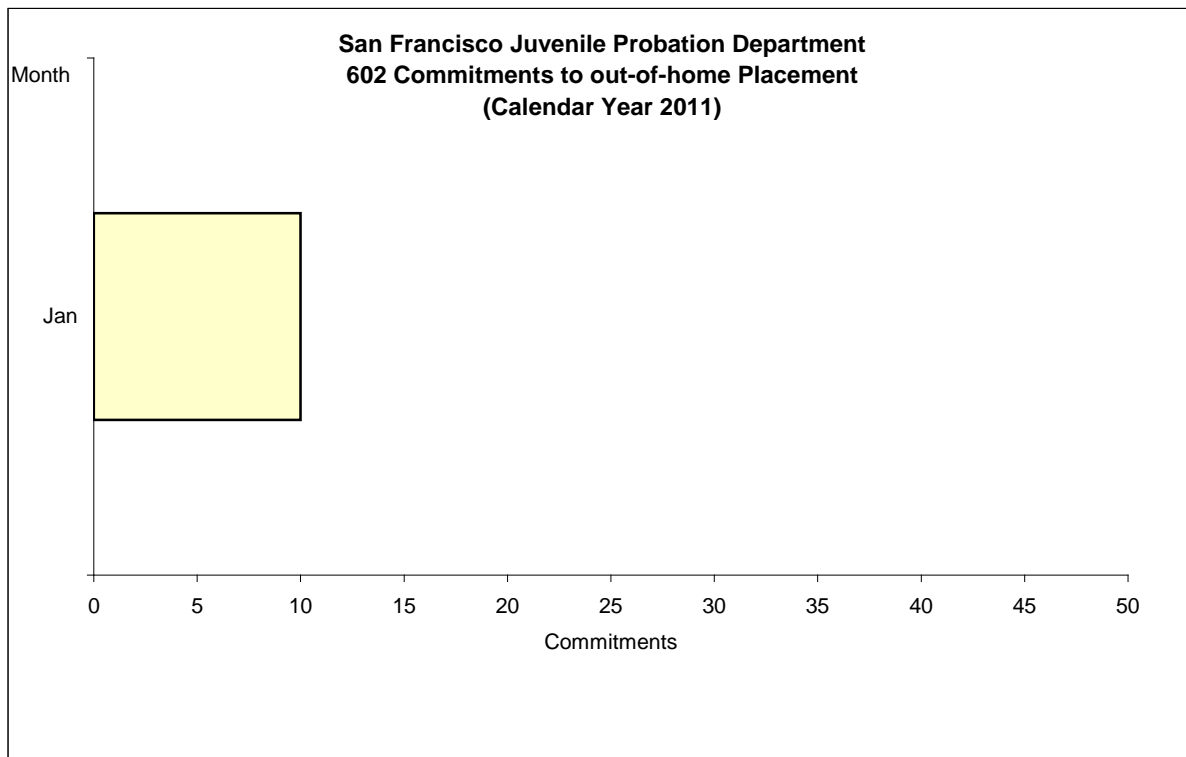


Out-of-Home Placement¹

Commitments of 602's

Calendar Year 2011

Commitments	Jan	Feb	Mar	Apr	May	Jun	Jul	Aug	Sep	Oct	Nov	Dec	Total
2011	10												10



¹ This report is based on 602 Commitments to out-of-home placements. If there is a 601 commitment, it will show as a footnote here. Figures are regularly updated to include reports from previous reporting periods.

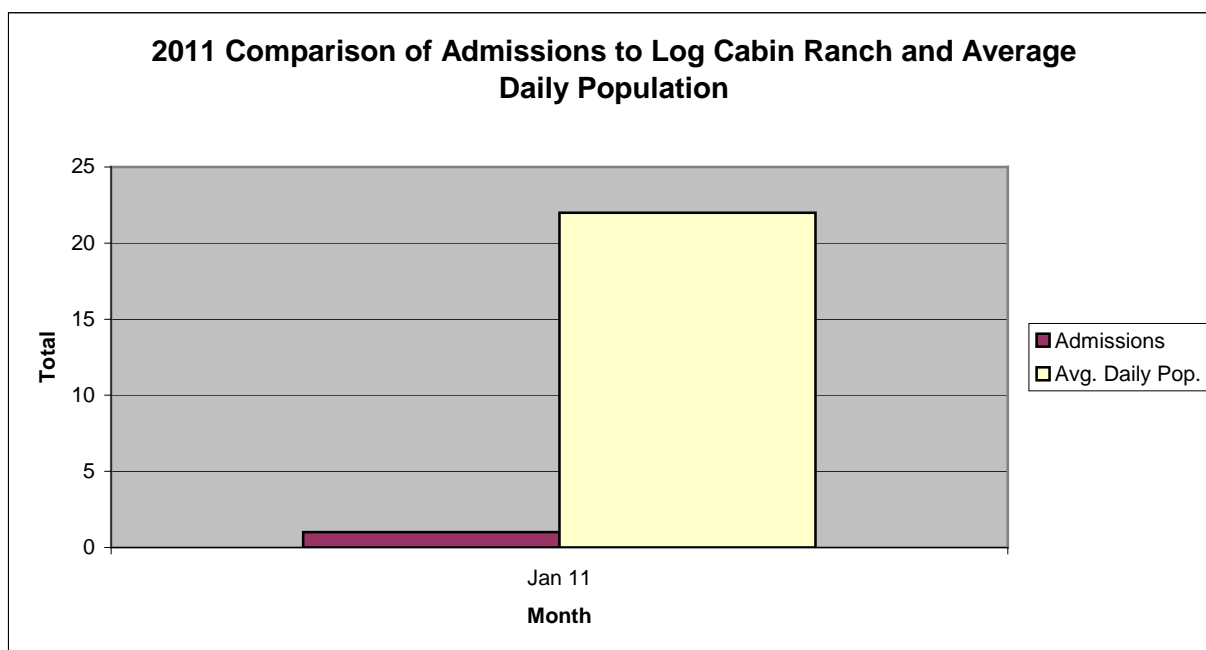
California Youth Authority Commitments (Calendar Year 2011)

Commitments	Jan	Feb	Mar	Apr	May	Jun	Jul	Aug	Sep	Oct	Nov	Dec	Total
2011	0												0



San Francisco Juvenile Probation Department

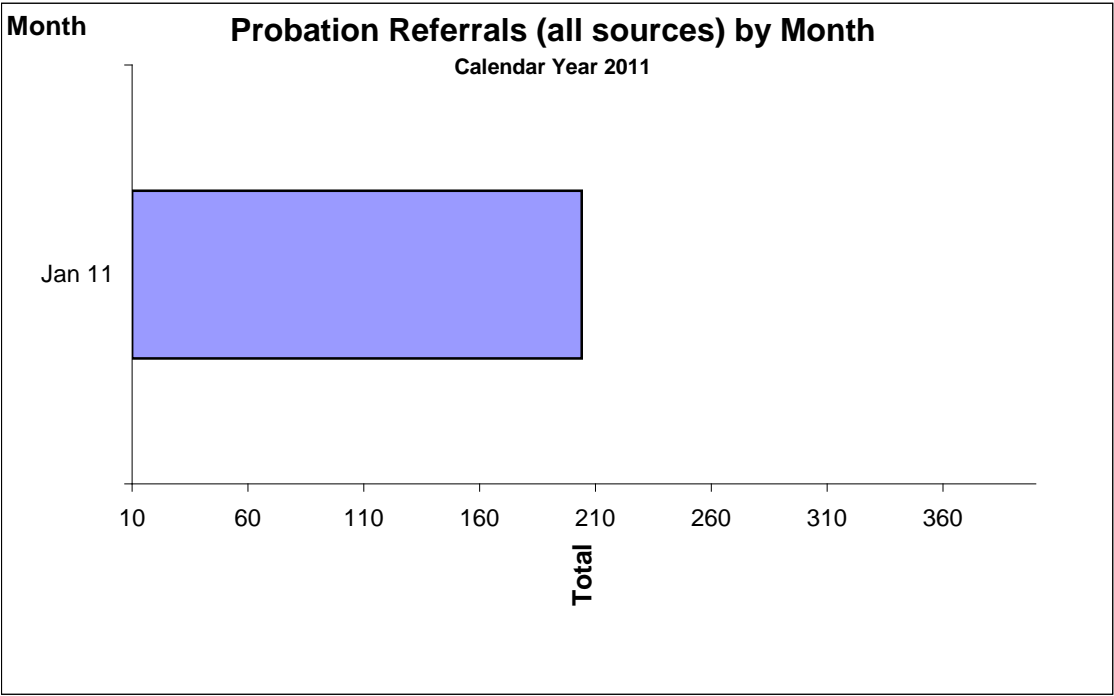
	Jan 11	Feb-11	Mar-11	Apr-11	May-11	Jun-11	Jul-11	Aug-11	Sep-11	Oct-11	Nov-11	Dec-11
Admissions	1											
Avg. Daily Pop.	22											



Probation Referrals by Month
Calendar Year 2011

Probation Referrals (all sources) by Month
(602 W&I)

Jan 11	204
Feb-11	
Mar-11	
Apr-11	
May-11	
Jun-11	
Jul-11	
Aug-11	
Sep-11	
Oct-11	
Nov-11	
Dec-11	

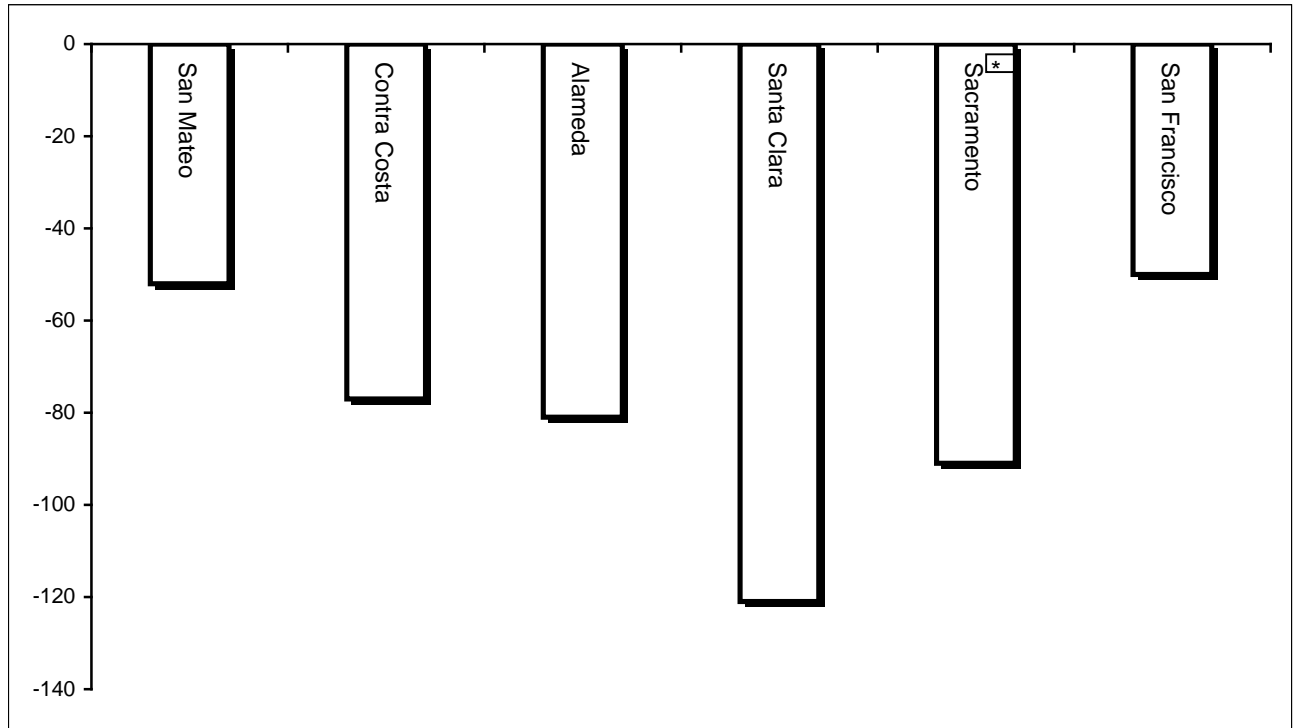


San Francisco Juvenile Probation Department
Monthly Incident Report Form
January 2011

Juvenile Hall	Assault on Staff	Fight	Attempted Escape	Fire	Attempted Suicide	Serious Contraband (Weapon illegal drug)	Use of Restraints	Self-Inflicted Injury	Assault on Staff with Injury	Fight with Injury
	1	5	1	0	0	3	7	0	0	0
	Escape*	Death	Suicide	Property Damage	Use of Force					
	1	0	0	0	4					
Log Cabin Ranch	Battery on Staff	Injury to Staff due to Restraint of Minor	Fight	Battery Youth on Youth	Attempted Escape	AWOL	Attempted Suicide	Serious Contraband	Battery on Staff with Injury	Fire
	0	0	1	0	0	0	0	0	0	0
	Fight With Injury	Battery Youth on Youth with Injury	Escape	Death	Suicide	Major Property Destruction				
	0	0	0	0	0	0				

*Youth broke away while in custody of SFPD.

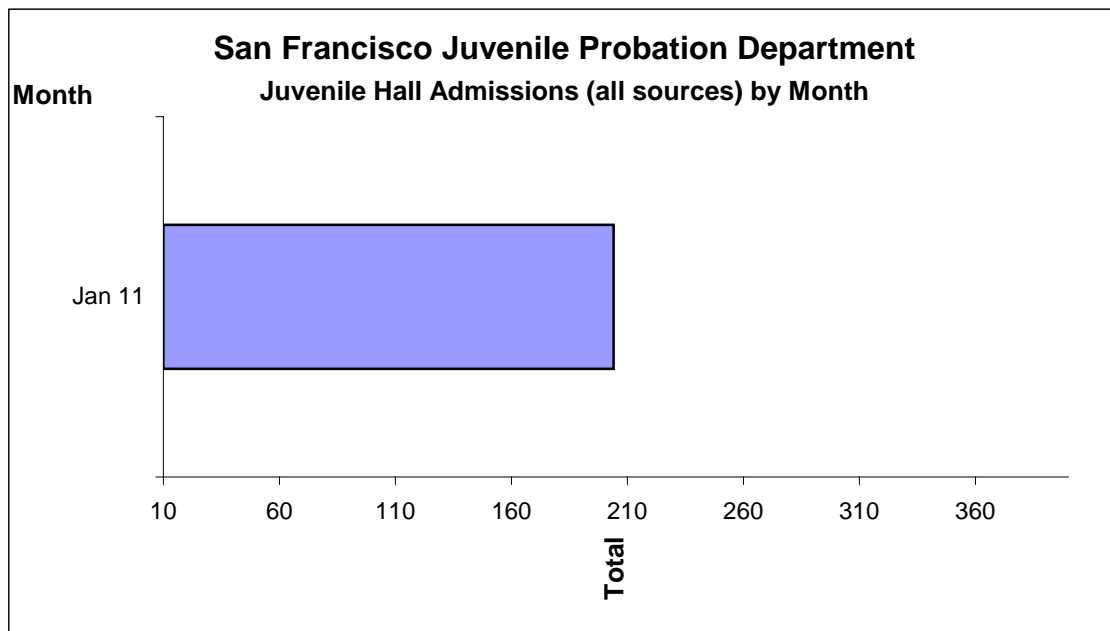
**Bay Area Resident Juvenile Hall Comparison
Over/Under Capacity**
on February 1st, 2011



	Rated Capacity	Actual	Over/Under Capacity
San Mateo	180	128	-52
Contra Costa	240	163	-77
Alameda	280	199	-81
Santa Clara	360	239	-121
Sacramento	308	217	-91
San Francisco	150	100	-50

Juvenile Hall Admissions by Month Calendar Year 2011

Jan 11 204
Feb-11
Mar-11
Apr-11
May-11
Jun-11
Jul-11
Aug-11
Sep-11
Oct-11
Nov-11
Dec-11

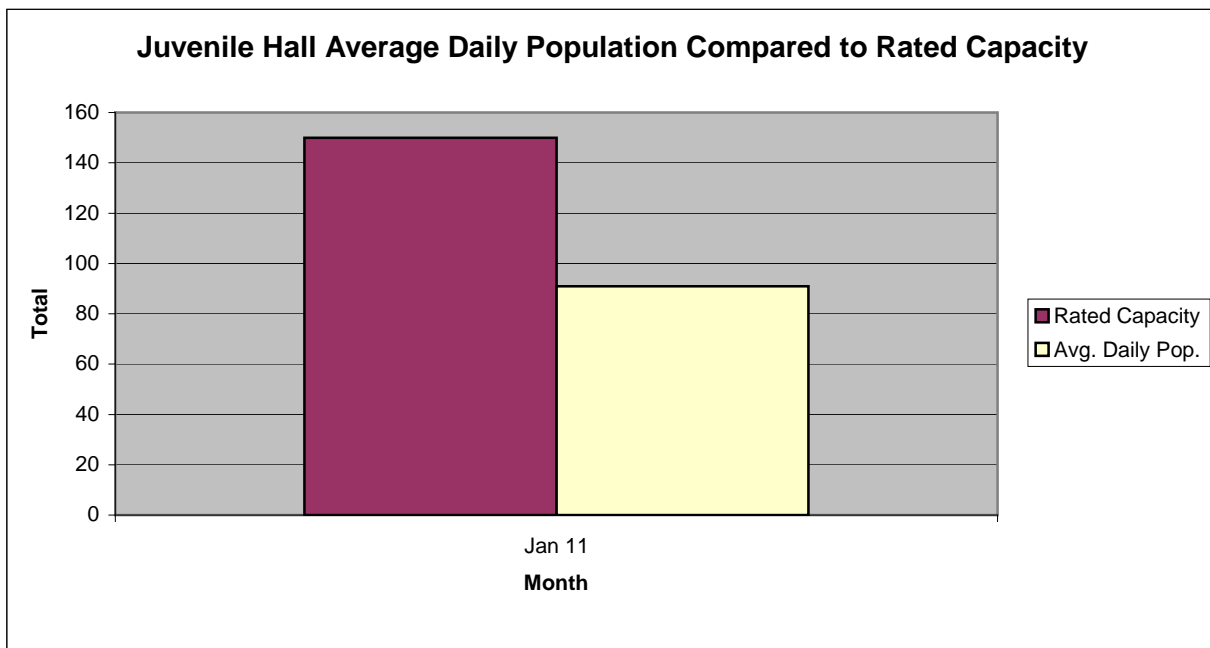


Characteristics of Juvenile Hall Detainees on January 31st, 2011

Detention Reason	Offense Code	*MF	Count	%
MURDER	187 (A) PC	F	2	1.98%
ATTEMPTED MURDER	664 /187 (A) PC	F	6	5.94%
RAPE:VICTIM INCAPABLE OF GIVING CONSENT	261 (A)(1) PC	F	1	0.99%
ORAL COPULATION WITH PERSON UNDER 14/ETC OR BY FORCE/ETC	288 A (C) PC	F	1	0.99%
LEWD OR LASCIVIOUS ACTS W/CHILD UNDER 14 YEARS	288 (A) PC	F	1	0.99%
ROBBERY	211 PC	F	25	24.75%
TRANSPORT/SELL NARCOTIC/CONTROLLED SUBSTANCE	11352 (A) HS	F	1	0.99%
WILLFUL CRUELTY TO CHILD:POSSIBLE INJURY/DEATH	273 A (A) PC	F	1	0.99%
POSSESS SPECIFIED CONTROLLED SUBSTANCE AND LOADED FIREARM	11370.1 HS	F	2	1.98%
INFLICT CORPORAL INJURY ON SPOUSE/COHABITANT	273.5 PC	F	1	0.99%
ASSAULT WITH FIREARM ON PERSON	245 (A)(2) PC	F	1	0.99%
FORCE OR ADW NOT FIREARM:GBI LIKELY	245 (A)(1) PC	F	10	9.90%
BATTERY W/SERIOUS BODILY INJURY	243 (D) PC	F	2	1.98%
ESCAPE/ATT ESCAPE AFTER ARREST W/FORCE/ETC CAUSING SBI	836.6(B) PC	F	1	0.99%
POSSESS CONTROLLED SUBSTANCE FOR SALE	11378 HS	F	1	0.99%
CONVICTED PERSON POSSESS/ETC FIREARM	12021 (B) PC	F	1	0.99%
CARRY CONCEALED WEAPON IN VEHICLE W/PRIOR FELONY CONVICTION	12025 (A)(1) PC	F	2	1.98%
FALSE IMPRISONMENT	236 /237 PC	F	1	0.99%
BATTERY ON SCHOOL EMPLOYEE W/INJURY	243.6 PC	F	1	0.99%
WILLFUL DISCHARGE FIREARM IN NEGLIGENT MANNER	246.3 PC	F	1	0.99%
BURGLARY:SECOND DEGREE	459 PC	F	3	2.97%
GRAND THEFT FROM PERSON	487 (C) PC	F	1	0.99%
TAKE VEHICLE W/O OWNER'S CONSENT/VEHICLE THEFT	10851 (A) VC	F	2	1.98%
OBSTRUCT/RESIST/ETC PUBLIC/PEACE OFFICER/EMERGENCY MED TECH	148 (A)(1) PC	M	1	0.99%
FORCE/ASSAULT WITH A DEADLY WEAPON-NOT FIREARM:GBI LIKELY	245 (A)(1) PC	M	1	0.99%
CARRY CONCEALED WEAPON ON PERSON	12025 (A)(2) PC	M	1	0.99%
MINOR ATTEMPT ESCAPE/ESCAPE COUNTY FACILITY	871 (A) WI	M	1	0.99%
TOUCH PERSON INTIMATELY AGAINST WILL FOR SEXUAL AROUSAL/ETC	243.4 (E)(1) PC	M	1	0.99%
FAIL TO OBEY ORDER OF JUVENILE COURT 602 WI	777 (A)(2) WI	M	5	4.95%
CHANGE OF PLACEMENT/PLACEMENT FAILURE	737 WI	M	2	1.98%
BENCH WARRANT	BENCH WARRANT		4	3.96%
ARREST WARRANT	WRNT602		12	11.88%
COURT ORDER	CTORD 602		5	4.95%
*M=Misdemeanor; F=Felony		Total	101	100.00%

San Francisco Juvenile Probation Department

	Jan 11	Feb-11	Mar-11	Apr-11	May-11	Jun-11	Jul-11	Aug-11	Sep-11	Oct-11	Nov-11	Dec-11
Rated Capacity	150											
Avg. Daily Pop.	91											



Juvenile Hall Average Length of Stay

For the Month of January 2011

¹Released

Range of Days	<i>1-10 days</i>	<i>11-20 days</i>	<i>21-30 days</i>	<i>30 or more days</i>	Total
# of Youth Released	51	12	11	31	105
% of Population	48.57%	11.43%	10.48%	29.52%	100%
# of Days	201	175	260	2734	3370
% of Total Days	5.96%	5.19%	7.72%	81.13%	100%
Average Length of Stay	3.94	14.58	23.64	88.19	32.10

²In Custody

Range of Days	<i>1-10 days</i>	<i>11-20 days</i>	<i>21-30 days</i>	<i>30 or more days</i>	Total
# of Youth Detained	29	25	12	35	101
% of Population	28.71%	24.75%	11.88%	34.65%	100%
# of Days	200	390	302	3800	4692
% of Total Days	4.26%	8.31%	6.44%	80.99%	100%
Average Length of Stay	6.90	15.60	25.17	108.57	46.46

Notes: Less than one day of stay is calculated as one day.

¹Length of stay is calculated according to release date for those who are released.

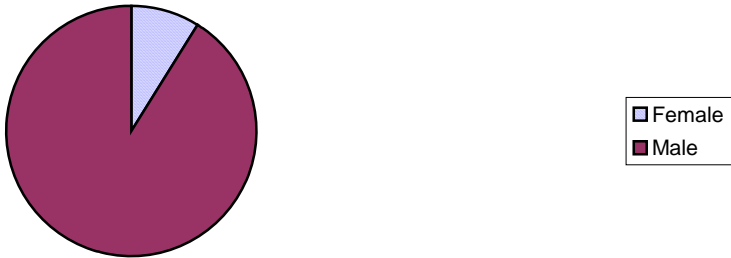
²For those still in custody, length of stay is calculated at the last day of the month.

Section III

Demographics

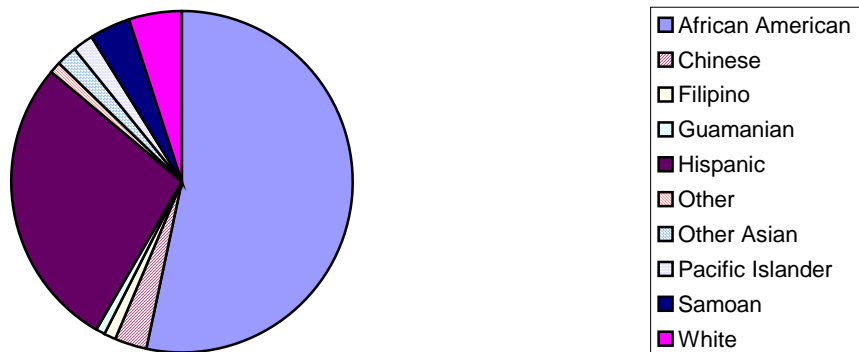
Gender	Frequency	Percent
Female	9	8.91%
Male	92	91.09%
Total	101	100.00%

**Demographic Characteristics
Of Juvenile Hall Detainees on 1/31/11 by Gender**

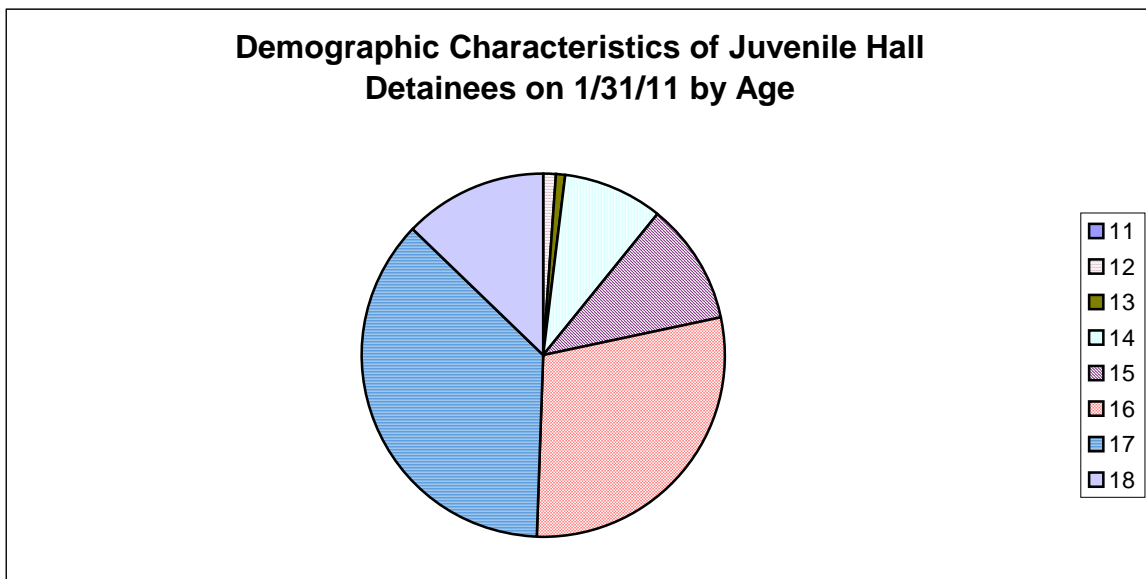


Race/Ethnic Origin	Frequency	Percent
African American	54	53.47%
Chinese	3	2.97%
Filipino	1	0.99%
Guamanian	1	0.99%
Hispanic	28	27.72%
Other	1	0.99%
Other Asian	2	1.98%
Pacific Islander	2	1.98%
Samoan	4	3.96%
White	5	4.95%
Total	101	100.00%

**Demographic Characteristics of Juvenile Hall Detainees on
1/31/11 by Race**

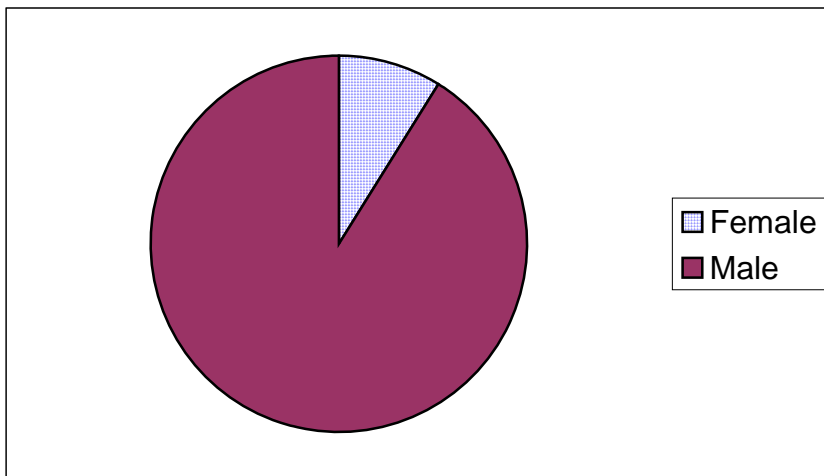


Age	Frequency	Percent
11	0	0.00%
12	1	0.99%
13	1	0.99%
14	9	8.91%
15	11	10.89%
16	29	28.71%
17	37	36.63%
18	13	12.87%
Total	101	100.00%



Demographic Characteristics of Juvenile Hall Detainees
on 1/31/2011
Age by Gender

Age	Female	Male	Total	
11	0	0	0	0.00%
12	0	1	1	0.99%
13	1	0	1	0.99%
14	1	8	9	8.91%
15	1	10	11	10.89%
16	3	26	29	28.71%
17	1	36	37	36.63%
18 and over	2	11	13	12.87%
Total	9	92	101	100.00%
	8.91%	91.09%	100.00%	



Demographic Characteristics
Of Juvenile Hall Detainees on January 31st, 2011

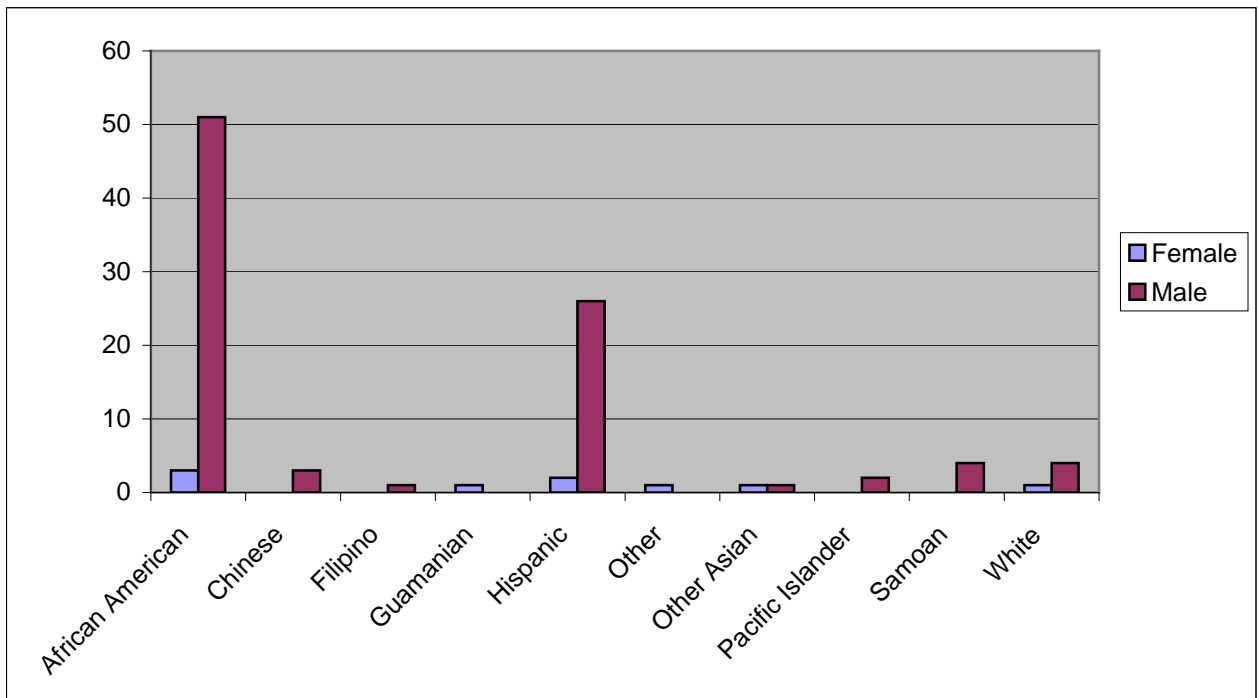
Geographic Residence of Youth	Count	%
Richmond	3	3.0%
Marina	1	1.0%
North of Market/Downtown	2	2.0%
Treasure Island/Yerba Buena Island	0	0.0%
Western Addition	9	8.9%
South of Market/Tenderloin	2	2.0%
Sunset	3	3.0%
Haight Ashbury/Castro/Upper Market	0	0.0%
Inner Mission	7	6.9%
Potrero	3	3.0%
Parkside	3	3.0%
Ingleside (West of Twin Peaks)	9	8.9%
Outer Mission	21	20.8%
Bayview	30	29.7%
Non-San Francisco and Unavailable	8	7.9%
Total	101	100.0%

Non-San Francisco and Unavailable	Count	%
Antioch	1	12.5%
Brisbane	1	12.5%
Daly City	1	12.5%
Marin City	1	12.5%
Sacramento	1	12.5%
Santa Rosa	2	25.0%
Springfield	1	12.5%
Total	8	100.0%

Demographic Characteristics
Of Juvenile Hall Detainees on January 31st, 2011

Race/Ethnic Origin by Gender

Race/Ethnicity	Female	Male	Total	%
African American	3	51	54	53.5%
Chinese	0	3	3	3.0%
Filipino	0	1	1	1.0%
Guamanian	1	0	1	1.0%
Hispanic	2	26	28	27.7%
Other	1	0	1	1.0%
Other Asian	1	1	2	2.0%
Pacific Islander	0	2	2	2.0%
Samoan	0	4	4	4.0%
White	1	4	5	5.0%
Total	9	92	101	100.0%

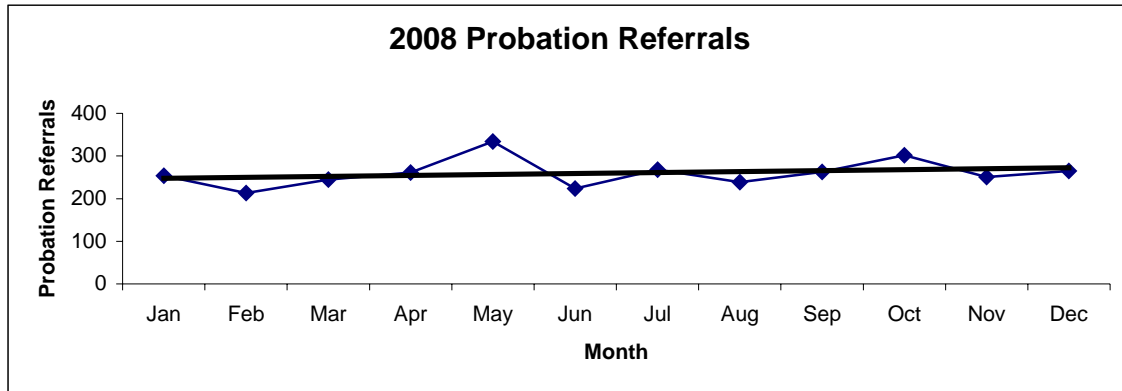


Section IV

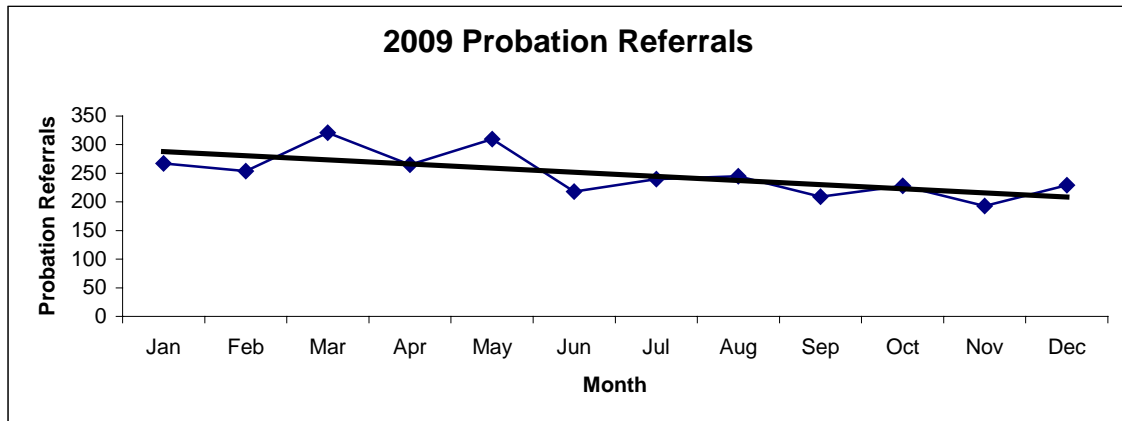
Historical Information

San Francisco Juvenile Probation Department
Probation Referrals (all sources) By Month
 (2008-2010)

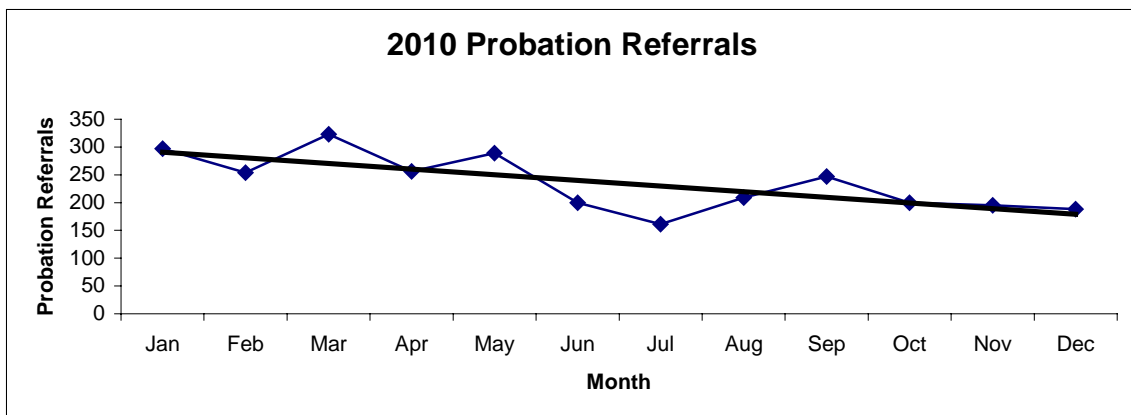
2008 Probation Referrals	Jan	Feb	Mar	Apr	May	Jun	Jul	Aug	Sep	Oct	Nov	Dec	Total
	254	213	245	261	334	224	268	239	263	302	251	265	3119



2009 Probation Referrals	Jan	Feb	Mar	Apr	May	Jun	Jul	Aug	Sep	Oct	Nov	Dec	Total
	267	254	321	265	310	218	240	245	209	228	193	229	2979

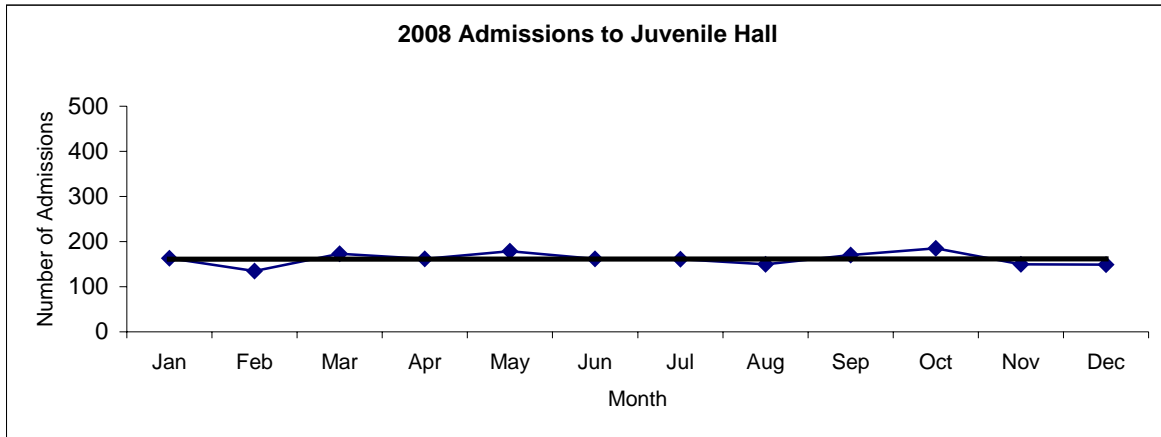


2010 Probation Referrals	Jan	Feb	Mar	Apr	May	Jun	Jul	Aug	Sep	Oct	Nov	Dec	Total
	297	254	323	256	289	200	161	209	247	200	195	188	2819

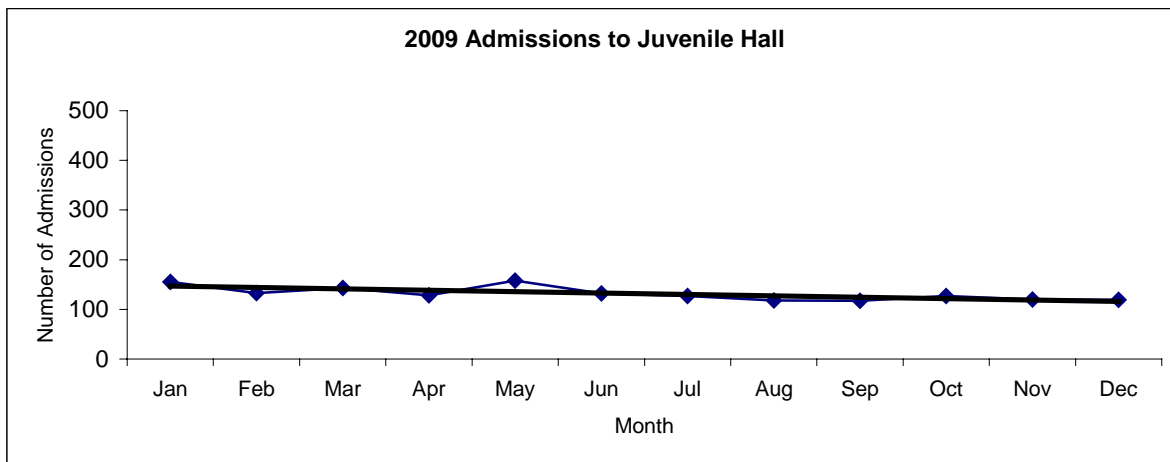


San Francisco Juvenile Probation
Juvenile Hall Admissions By Month
(2008-2010)

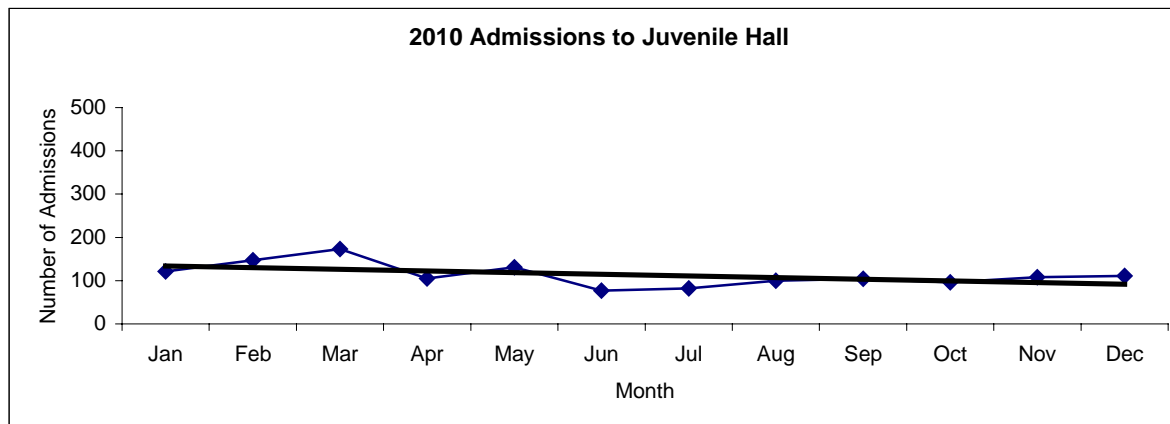
2008 Admissions	Jan	Feb	Mar	Apr	May	Jun	Jul	Aug	Sep	Oct	Nov	Dec	Total
	163	135	173	162	179	162	161	150	170	185	150	149	1939



2009 Admissions	Jan	Feb	Mar	Apr	May	Jun	Jul	Aug	Sep	Oct	Nov	Dec	Total
	155	133	143	128	158	132	127	118	117	127	120	119	1577

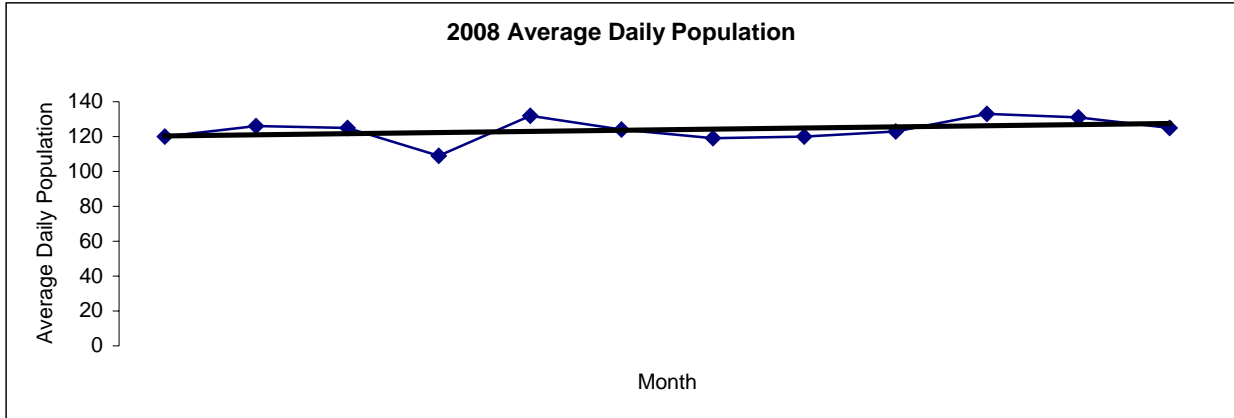


2010 Admissions	Jan	Feb	Mar	Apr	May	Jun	Jul	Aug	Sep	Oct	Nov	Dec	Total
	121	147	173	105	131	77	82	100	104	96	108	111	1355

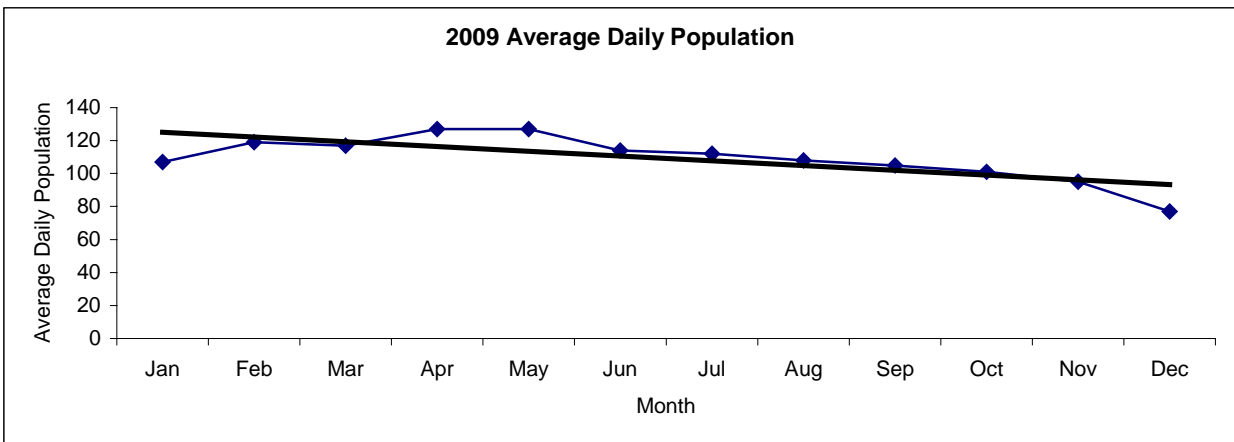


San Francisco Juvenile Probation
Juvenile Hall Average Daily Population By Month
 (2008-2010)

2008 Avg. Daily Pop.	Jan	Feb	Mar	Apr	May	Jun	Jul	Aug	Sep	Oct	Nov	Dec	Total
	120	126	125	109	132	124	119	120	123	133	131	125	124



2009 Avg. Daily Pop.	Jan	Feb	Mar	Apr	May	Jun	Jul	Aug	Sep	Oct	Nov	Dec	Total
	107	119	117	127	127	114	112	108	105	101	95	77	109



2010 Avg. Daily Pop.	Jan	Feb	Mar	Apr	May	Jun	Jul	Aug	Sep	Oct	Nov	Dec	Total
	85	104	110	107	99	97	90	88	90	84	79	92	94

