

City and County of San Francisco



Juvenile Probation Department

---

**Monthly Report for August 2008**

Presented to the Juvenile Probation Commission

September 10<sup>th</sup>, 2008

William P. Siffermann  
Chief Probation Officer

Prepared by Jose Luis Perla  
Information Technology Director  
(415) 753-7686  
jose.perla@sfgov.org

# Table of Contents

---

## Section I Summary Reports

Juvenile Hall, Log Cabin Ranch Summary Statistics .....	1
Probation Services Summary and California Youth Authority Statistics.....	2
Active Cases by Units.....	3

## Section II Current Month General Detail

Probation Referrals, Juvenile Admissions And Average Daily Population .....	4
Juvenile Hall Admissions and Average Daily Population.....	5
Commitments to out-of-home placement .....	6
Commitments to California Youth Authority .....	7
Log Cabin Ranch Admissions and Average Daily Population.....	8
Probation Referrals .....	9
Juvenile Hall And Log Cabin Ranch Incident Report .....	10
Bay Area Resident Juvenile Hall Comparison .....	11
Juvenile Hall Admissions .....	12
Juvenile Hall Detainees by Detention Reason.....	13
Juvenile Hall Average Daily Population by Rated Capacity .....	14
Juvenile Hall Average Length of Stay .....	15

## Section III Demographics

Juvenile Hall Detainees by Sex and Race/Ethnic Origin.....	16
Juvenile Hall Detainees by Age.....	17
Juvenile Hall Detainees by Age and Sex .....	18
Juvenile Hall Detainees by Geographic Residence of Youth.....	19
Juvenile Hall Detainees by Race/Ethnic Origin and Sex.....	20

**Section IV**  
**Historical Information**

2004-2006 Probation Referrals .....21  
2004-2006 Juvenile Hall Admissions .....22  
2004-2006 Juvenile Hall Average Daily Population .....23



# **Section I**

# **Summary Reports**

## Summary Report for the Month of August 2008

<b>Juvenile Hall</b>	<i>July 2007</i>	<i>July 2008</i>	<i>August 2007</i>	<i>August 2008</i>	<i>YTD 2007</i>	<i>YTD 2008</i>
Admissions	140	161	133	150	1273	1285
Average Daily Population	120	119	108	120	120	121
Average Length of Stay (Releases)	19.38	20.44	24.22	21.11	23.82	21.72
Average Length of Stay (In Custody)	54.78	57.63	57.38	63.20	47.10	49.88
Releases	134	176	140	151	1275	1285
<b>Log Cabin Ranch</b>						
Admissions:						
First Time Commitments	2	3	1	1	28	9
Recommitments	0	1	2	0	5	1
<i>Total</i>	<b>2</b>	<b>4</b>	<b>3</b>	<b>1</b>	<b>33</b>	<b>10</b>
Releases:						
Graduated	2	1	4	1	23	15
Escape	0	0	0	0	1	0
Other releases	2	0	4	0	17	9
<i>Total</i>	<b>4</b>	<b>1</b>	<b>8</b>	<b>1</b>	<b>41</b>	<b>24</b>
Average Daily Population	27	13	25	15	29	17
<b>Incident Reports</b>						
Juvenile Hall	42	73	26	61	168	461
Log Cabin Ranch	4	0	0	0	24	7
<i>Total</i>	<b>46</b>	<b>73</b>	<b>26</b>	<b>61</b>	<b>192</b>	<b>468</b>

## Summary Report for the Month of August 2008

<b>Probation Services</b>	<i>July 2008</i>	<i>August 2008</i>	<i>Year To Date 2008</i>
Probation Referrals	268	239	238
Total Petitions including violation of probation	128	134	1021
Selected Court Dispositions:			
California Youth Authority	0	0	1
Log Cabin Ranch	3	1	10
Out of Home Placement	9	9	147
Ward Probation	37	28	248
Non-Ward Probation (725a WI)	3	7	26
Informal Probation (654 WI)	25	27	132
Violation of Probation Petitions Filed	19	7	92
<b>California Youth Authority Monthly Count San Francisco County Juvenile Court Cases August 31<sup>st</sup>, 2008</b>			
Category	Institutions	Parole	
<b>Males</b>			
White	0	1	
Hispanic	1	7	
African American	2	15	
Asian	0	1	
Native American	0	0	
Filipino	0	0	
Pacific Islander	0	1	
Other	0	0	
<b>Total</b>	<b>3</b>	<b>25</b>	
<b>Females</b>			
White	0	0	
Hispanic	0	2	
African American	1	0	
Asian	0	0	
Native American	0	0	
Filipino	0	0	
Pacific Islander	0	0	
Other	0	0	
<b>Total</b>	<b>1</b>	<b>2</b>	
<b>Grand Total</b>	<b>4</b>	<b>27</b>	

## Summary Report for the Month of August 2008

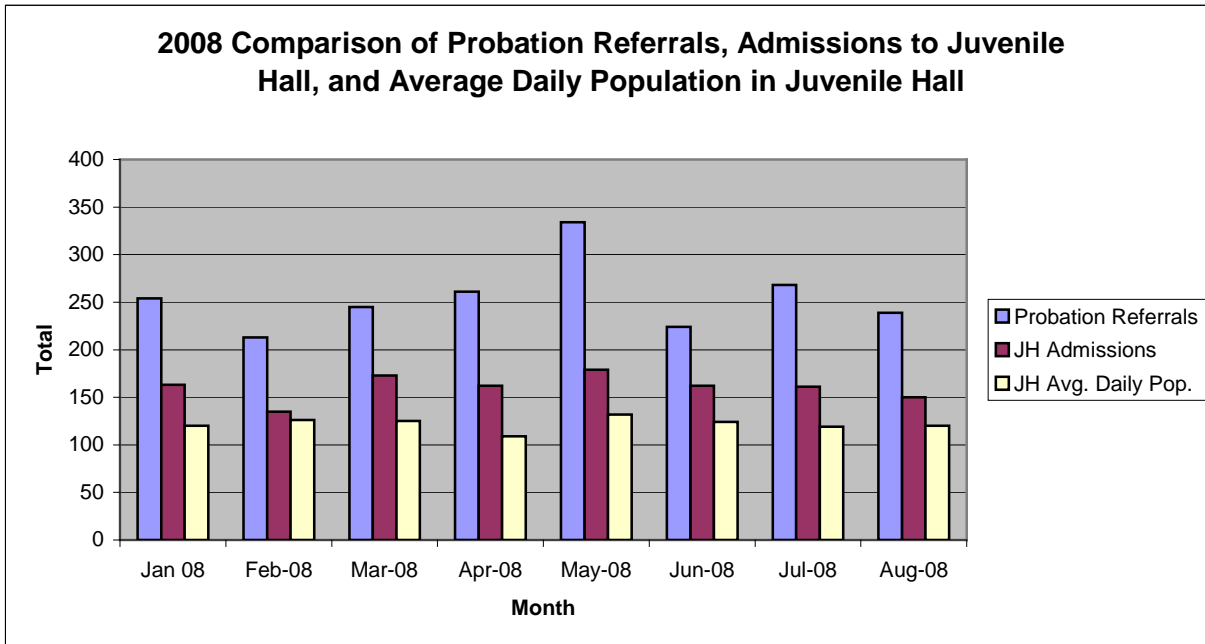
<b>Probation Services</b>			
<b>Active Cases by Units</b>	July 2008	August 2008	August Average # Youth by PO
CARC	179	93	93
Intake Green (Custody Screening Investigation)	207	208	26
Intake Gold (Probation Services 1)	285	300	42
Probation Services 2	204	198	19
Probation Services 3	345	320	32
Probation Services 4	247	231	28
Special Services	22	21	5
<i>Total</i>	<b>1489</b>	<b>1371</b>	<b>35</b>
Total Active Intake Cases	713	651	
Total Probation/Supervision Cases	776	720	

**Section II**  
**Current Month**  
**General Detail**



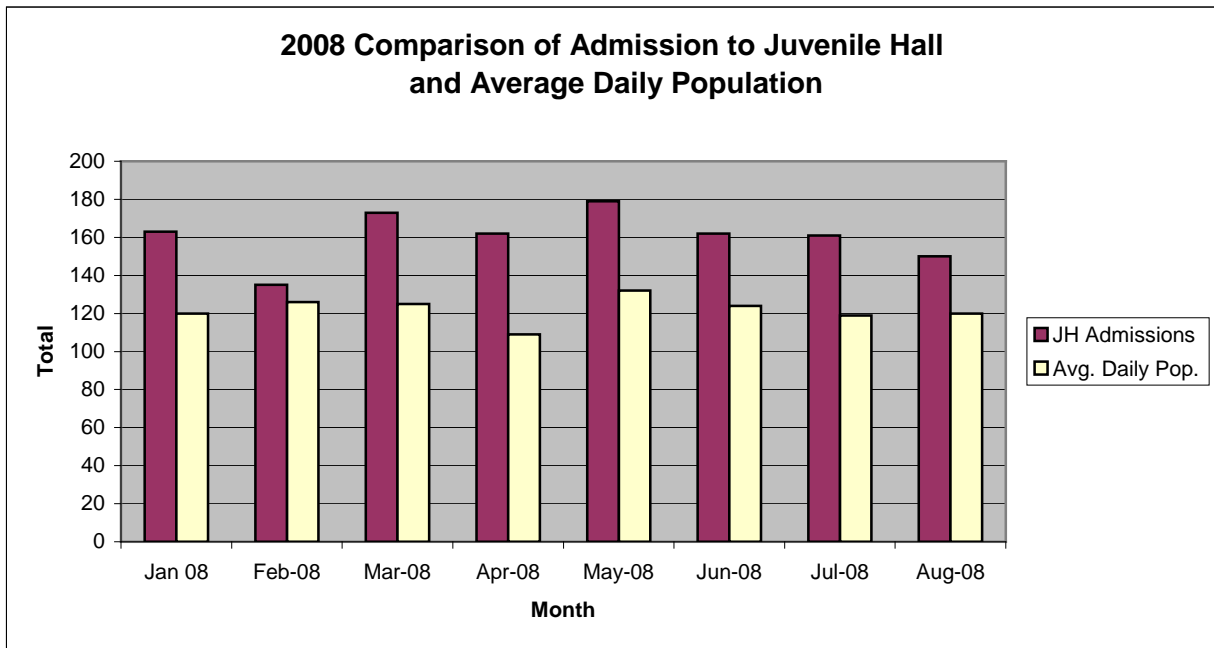
## San Francisco Juvenile Probation Department

	Jan 08	Feb-08	Mar-08	Apr-08	May-08	Jun-08	Jul-08	Aug-08	Sep-08	Oct-08	Nov-08	Dec-08
Probation Referrals	254	213	245	261	334	224	268	239				
JH Admissions	163	135	173	162	179	162	161	150				
JH Avg. Daily Pop.	120	126	125	109	132	124	119	120				



## San Francisco Juvenile Probation Department

	Jan 08	Feb-08	Mar-08	Apr-08	May-08	Jun-08	Jul-08	Aug-08	Sep-08	Oct-08	Nov-08	Dec-08
JH Admissions	163	135	173	162	179	162	161	150				
Avg. Daily Pop.	120	126	125	109	132	124	119	120				

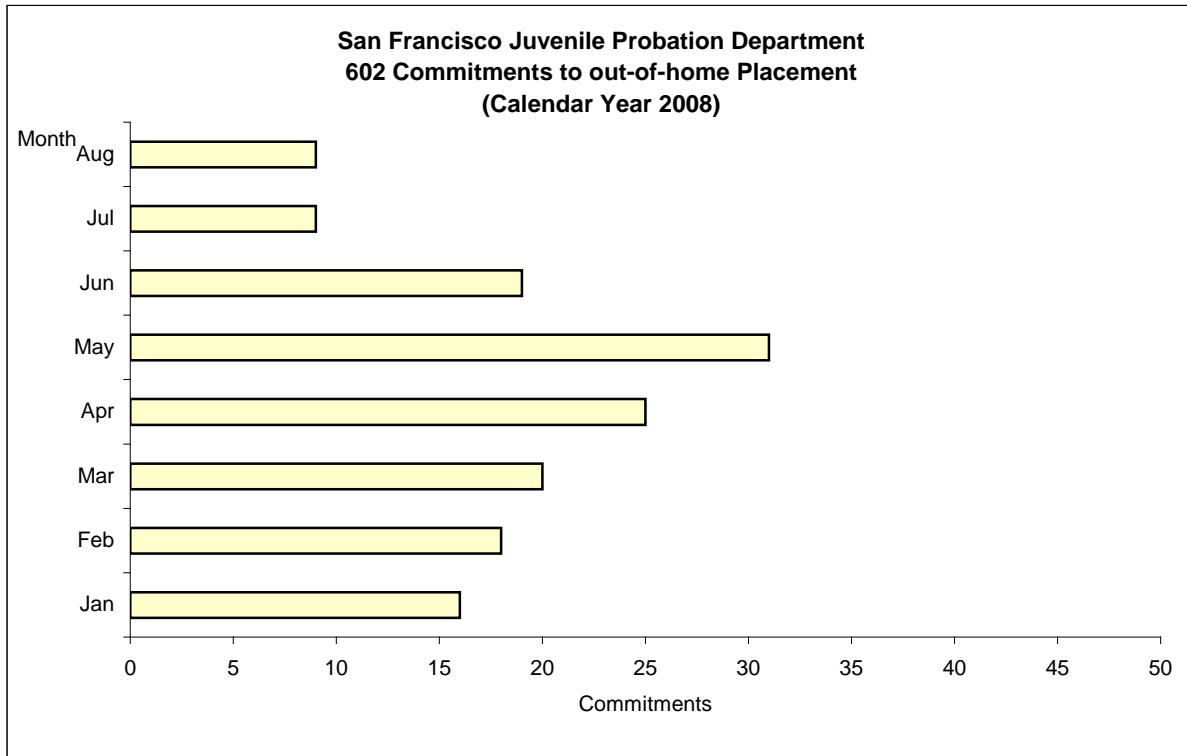


# Out-of-Home Placement<sup>1</sup>

## Commitments of 602's

### Calendar Year 2008

Commitments	Jan	Feb	Mar	Apr	May	Jun	Jul	Aug	Sep	Oct	Nov	Dec	Total
2008	16	18	20	25	31	19	9	9					147



<sup>1</sup> This report is based on 602 Commitments to out-of-home placements. If there is a 601 commitment, it will show as a footnote here. Figures are regularly updated to include reports from previous reporting periods.

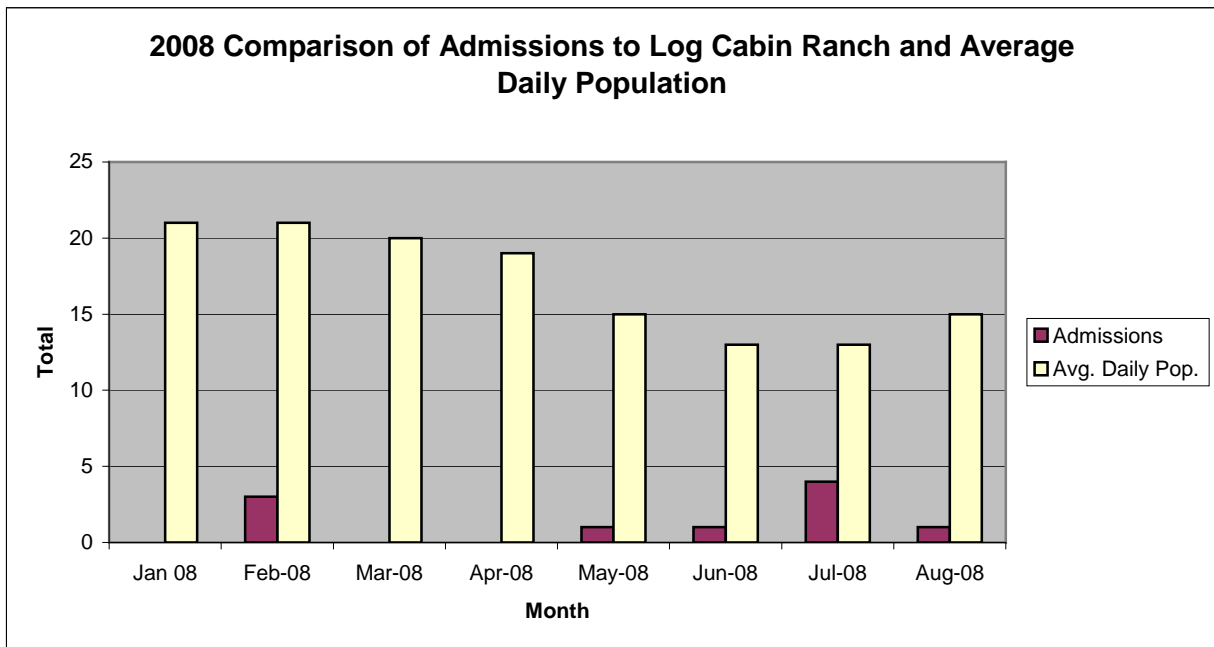
California Youth Authority  
Commitments  
(Calendar Year 2008)

Commitments	Jan	Feb	Mar	Apr	May	Jun	Jul	Aug	Sep	Oct	Nov	Dec	Total
2008	1	0	0	0	0	0	0	0					1



## San Francisco Juvenile Probation Department

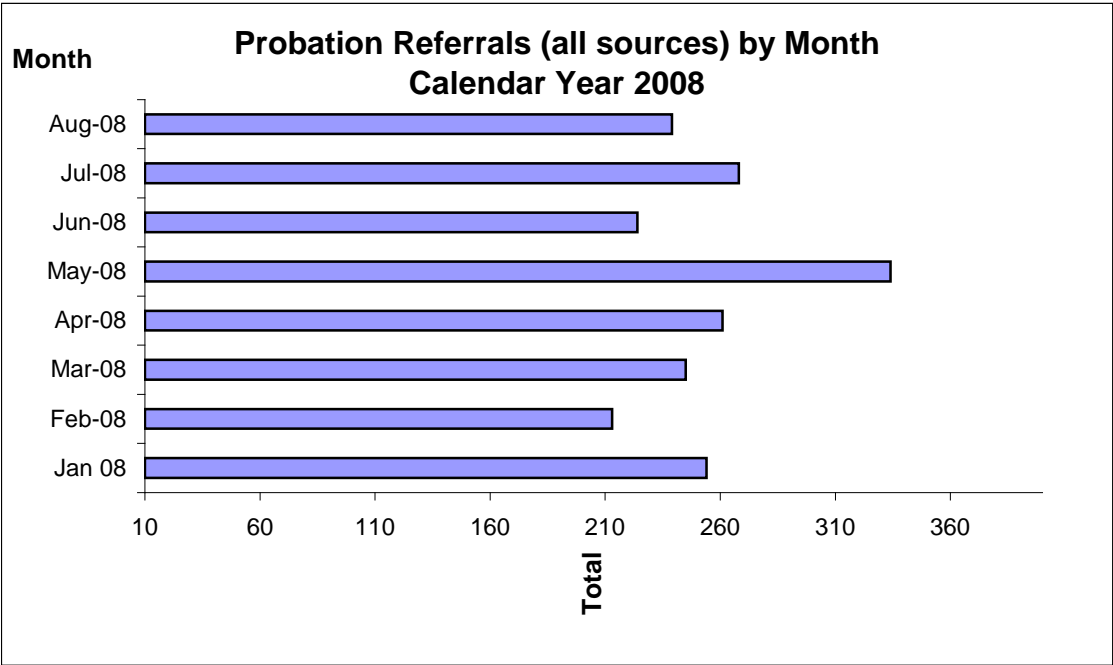
	Jan 08	Feb-08	Mar-08	Apr-08	May-08	Jun-08	Jul-08	Aug-08	Sep-08	Oct-08	Nov-08	Dec-08
Admissions	0	3	0	0	1	1	4	1				
Avg. Daily Pop.	21	21	20	19	15	13	13	15				



# Probation Referrals by Month Calendar Year 2008

## Probation Referrals (all sources) by Month (602 W&I)

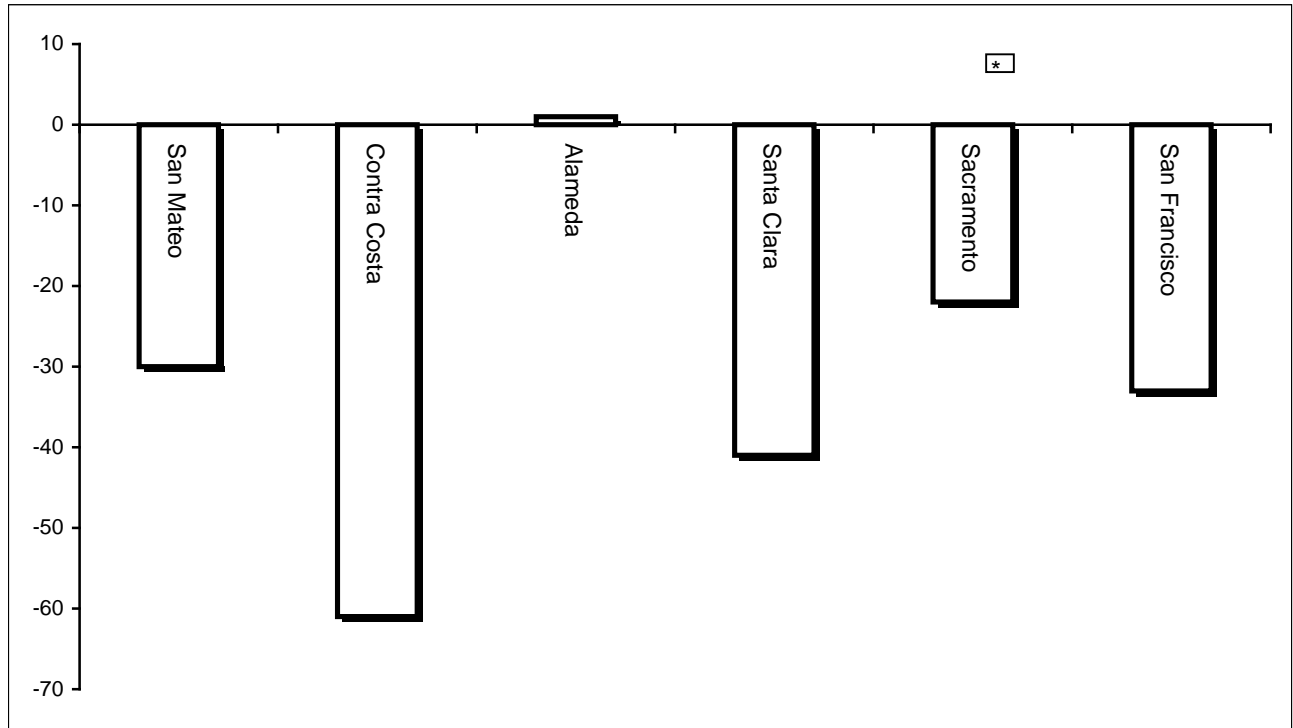
Jan 08	254
Feb-08	213
Mar-08	245
Apr-08	261
May-08	334
Jun-08	224
Jul-08	268
Aug-08	239
Sep-08	
Oct-08	
Nov-08	
Dec-08	



SAN FRANCISCO JUVENILE PROBATION DEPARTMENT  
MONTHLY INCIDENT REPORT FORM  
MONTH/YEAR: AUGUST 2008

<b>Log Cabin Ranch</b>	Battery on Staff	Injury to Staff due to Restraint of Minor	Fight	Battery Youth on Youth	Attempted Escape	AWOL	Attempted Suicide	Serious Contraband (Weapon Illegal Drug)	Use of Restraints	Self Inflicted Injuries
	<b>0</b>	<b>0</b>	<b>0</b>	<b>0</b>	<b>0</b>	<b>0</b>	<b>0</b>	<b>0</b>	<b>0</b>	<b>0</b>
	Battery on Staff with Injury	Fire	Fight with Injury	Battery Youth on Youth with Injury	Escape	Death	Suicide	Major Property Destruction	Use of Force	
<b>0</b>	<b>0</b>	<b>0</b>	<b>0</b>	<b>0</b>	<b>0</b>	<b>0</b>	<b>0</b>	<b>0</b>	<b>0</b>	
<b>Juvenile Hall</b>	Battery on Staff	Injury to Staff due to Restraint of Minor	Fight	Battery Youth on Youth	Attempted Escape	AWOL	Attempted Suicide	Serious Contraband (Weapon Illegal Drug)	Use of Restraints	Self Inflicted Injuries
	<b>6</b>	<b>1</b>	<b>6</b>	<b>9</b>	<b>0</b>	<b>0</b>	<b>0</b>	<b>17</b>	<b>2</b>	<b>1</b>
	Battery on Staff with Injury	Fire	Fight with Injury	Battery Youth on Youth with Injury	Escape	Death	Suicide	Major Property Destruction	Use of Force	
<b>0</b>	<b>0</b>	<b>3</b>	<b>1</b>	<b>0</b>	<b>0</b>	<b>0</b>	<b>0</b>	<b>0</b>	<b>15</b>	

## Bay Area Resident Juvenile Hall Comparison Over/Under Capacity on September 2<sup>nd</sup>, 2008

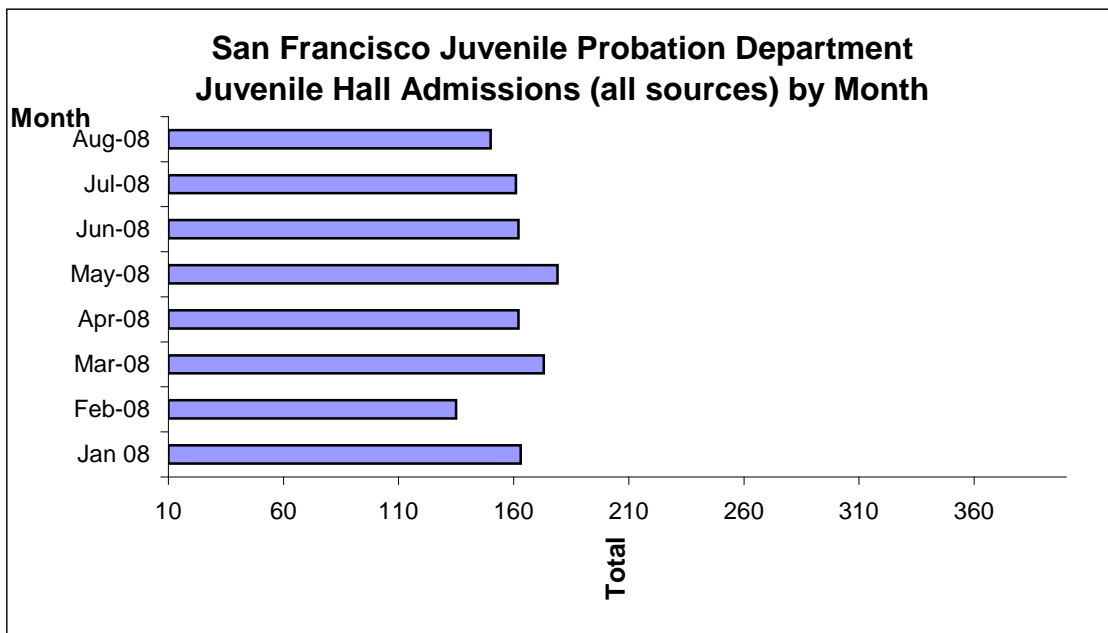


	Rated Capacity	Actual	Over/Under Capacity
San Mateo	180	150	-30
Contra Costa	240	179	-61
Alameda	280	281	1
Santa Clara	360	319	-41
Sacramento	308	286	-22
San Francisco	150	117	-33



## Juvenile Hall Admissions by Month Calendar Year 2008

Jan 08	163
Feb-08	135
Mar-08	173
Apr-08	162
May-08	179
Jun-08	162
Jul-08	161
Aug-08	150
Sep-08	
Oct-08	
Nov-08	
Dec-08	

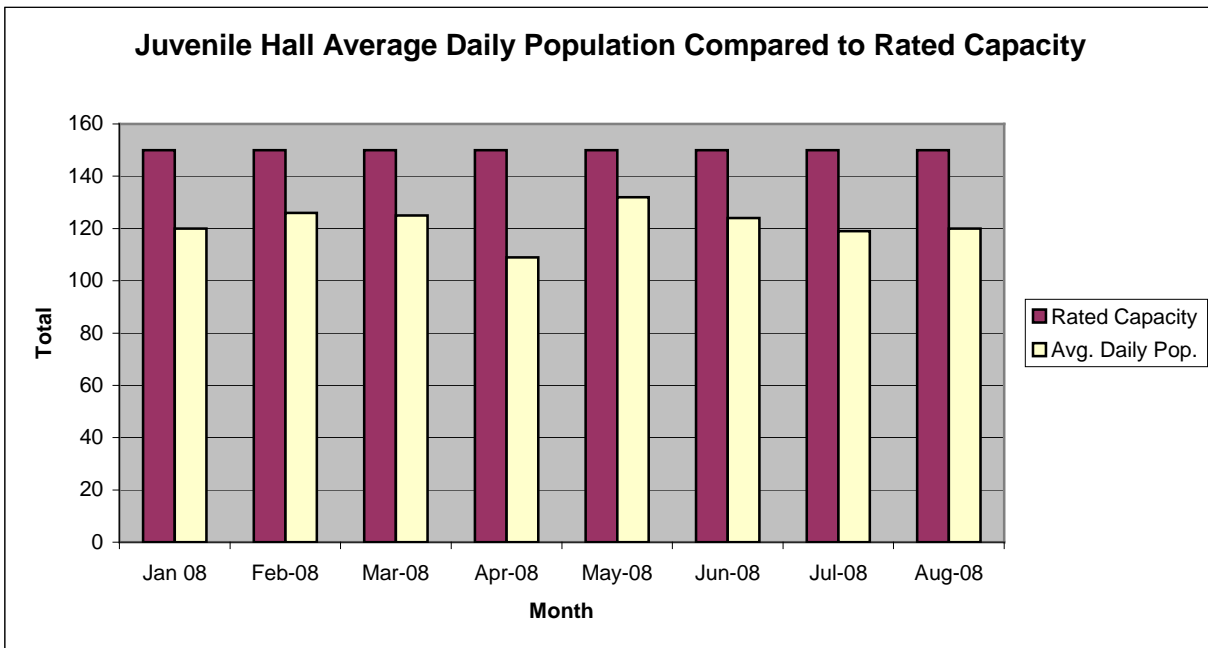


**Characteristics of Juvenile Hall Detainees on August 31<sup>st</sup>, 2008**

Detention Reason	Offense Code	*MF	Count	%
MURDER	187 (A) PC	F	5	4.4%
ATTEMPTED MURDER	664 /187 (A) PC	F	2	1.8%
AGGRAVATED MAYHEM	205 PC	F	1	0.9%
RAPE OF DRUGGED VICTIM	261 (A)(3) PC	F	1	0.9%
ARSON:INHABITED STRUCTURE/PROPERTY	451 (B) PC	F	1	0.9%
DISCHARGE FIREARM FROM VEHICLE AT PERSON	12034 (C) PC	F	1	0.9%
ROBBERY	211 PC	F	18	15.9%
ASSAULT W/DEADLY WEAPON W/LIKELY GBI ON CUSTODIAL OFFICER	245.3 PC	F	2	1.8%
TRANSPORT/SELL NARCOTIC/CONTROLLED SUBSTANCE	11352 (A) HS	F	10	8.8%
POSSESS/PURCHASE COCAINE BASE FOR SALE	11351.5 HS	F	3	2.7%
BURGLARY	459 PC	F	3	2.7%
POSSESS SPECIFIED CONTROLLED SUBSTANCE AND LOADED FIREARM	11370.1 HS	F	1	0.9%
PREVENT/DISSUADE WITNESS VICTIM BY THREAT/FORCE	136.1(C)(1) PC	F	1	0.9%
INFLICT CORPORAL INJURY ON SPOUSE/COHABITANT	273.5(A) PC	F	2	1.8%
ASSAULT WITH FIREARM ON PERSON	245 (A)(2) PC	F	2	1.8%
FORCE OR ADW NOT FIREARM:GBI LIKELY	245 (A)(1) PC	F	6	5.3%
BATTERY W/SERIOUS BODILY INJURY	243 (D) PC	F	3	2.7%
CONVICTED PERSON POSSESS/ETC FIREARM	12021 (B) PC	F	1	0.9%
FELON/ADDICT/ETC POSSESS FIREARM	12021 (A)(1) PC	F	1	0.9%
TAMPER WITH IDENTIFICATION MARKS ON FIREARM	12090 PC	F	1	0.9%
CARRY CONCEALED STOLEN WEAPON	12025 (B)(2) PC	F	1	0.9%
CARRY CONCEALED WEAPON IN VEHICLE W/PRIOR FELONY CONVICTION	12025 (A)(1) PC	F	3	2.7%
OBSTRUCT/RESIST EXECUTIVE OFFICER	69 PC	F	1	0.9%
TAKE VEHICLE W/O OWNER'S CONSENT/VEHICLE THEFT	10851 (A) VC	F	1	0.9%
POSSESS ANY ASSAULT WEAPON	12280 (B) PC	F	1	0.9%
CARRY LOADED FIREARM IN PUBLIC UNDER SPECIFIC CIRCUMSTANCES	12031 (A)(1) PC	F	2	1.8%
MINOR ATT ESCAPE/ESCAPE COUNTY FACILITY W/FORCE OR VIOLENCE	871 (B) WI	F	1	0.9%
MINOR ILLEGALLY POSSESS CONCEALED WEAPON WITH PRIOR	12101 (A)(1) PC	F	1	0.9%
CONSPIRACY	182 (A) PC	F	1	0.9%
VANDALISM (\$400 OR MORE)	594 (B)(1) PC	F	1	0.9%
FORCE/ASSAULT WITH A DEADLY WEAPON-NOT FIREARM:GBI LIKELY	245 (A)(1) PC	M	1	0.9%
BURGLARY	459 PC	M	1	0.9%
VANDALISM:DAMAGE PROPERTY	594 (A)(2) PC	M	2	1.8%
GIVE FALSE INFORMATION TO PEACE OFFICER	31 VC	M	1	0.9%
FAIL TO OBEY ORDER OF JUVENILE COURT 602 WI	777 (A)(2) WI	M	3	2.7%
CHANGE OF PLACEMENT/PLACEMENT FAILURE	737 WI	M	2	1.8%
VIOLATION(S) OF HOME SUPERVISION CONDITION	628.1 WI	M	2	1.8%
BENCH WARRANT	BENCH WARRANT		1	0.9%
ARREST WARRANT	WRNT602		15	13.3%
COURT ORDER 602	CTORD 602		7	6.2%
*F=Felony; M=Misdemeanor		<b>Total</b>	<b>113</b>	<b>100.0%</b>

## San Francisco Juvenile Probation Department

	Jan 08	Feb-08	Mar-08	Apr-08	May-08	Jun-08	Jul-08	Aug-08	Sep-08	Oct-08	Nov-08	Dec-08
Rated Capacity	150	150	150	150	150	150	150	150	150			
Avg. Daily Pop.	120	126	125	109	132	124	119	120				



## Juvenile Hall Average Length of Stay

For the Month of August 2008

### <sup>1</sup>Released

<b>Range of Days</b>	<i>1-10 days</i>	<i>11-20 days</i>	<i>21-30 days</i>	<i>30 or more days</i>	<b>Total</b>
# of Youth Released	82	22	13	34	151
% of Population	54.30%	14.57%	8.61%	22.52%	100%
# of Days	353	326	324	2184	3187
% of Total Days	11.08%	10.23%	10.17%	68.53%	100%
Average Length of Stay	4.30	14.82	24.92	64.24	21.11

### <sup>2</sup>In Custody

<b>Range of Days</b>	<i>1-10 days</i>	<i>11-20 days</i>	<i>21-30 days</i>	<i>30 or more days</i>	<b>Total</b>
# of Youth Detained	25	20	15	53	113
% of Population	22.12%	17.70%	13.27%	46.90%	100%
# of Days	137	296	361	6348	7142
% of Total Days	1.92%	4.14%	5.05%	88.88%	100%
Average Length of Stay	5.48	14.80	24.07	119.77	63.20

Notes: Less than one day of stay is calculated as one day.

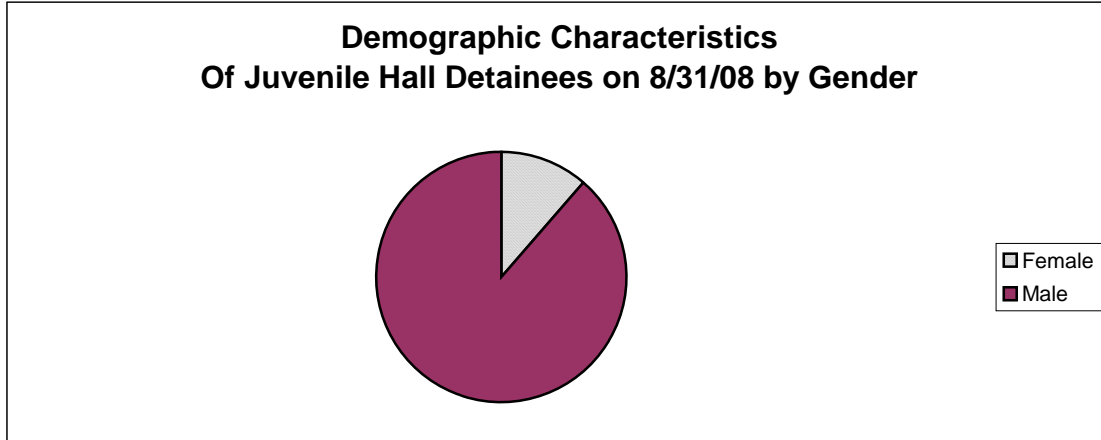
<sup>1</sup>Length of stay is calculated according to release date for those who are released.

<sup>2</sup>For those still in custody, length of stay is calculated at the last day of the month.

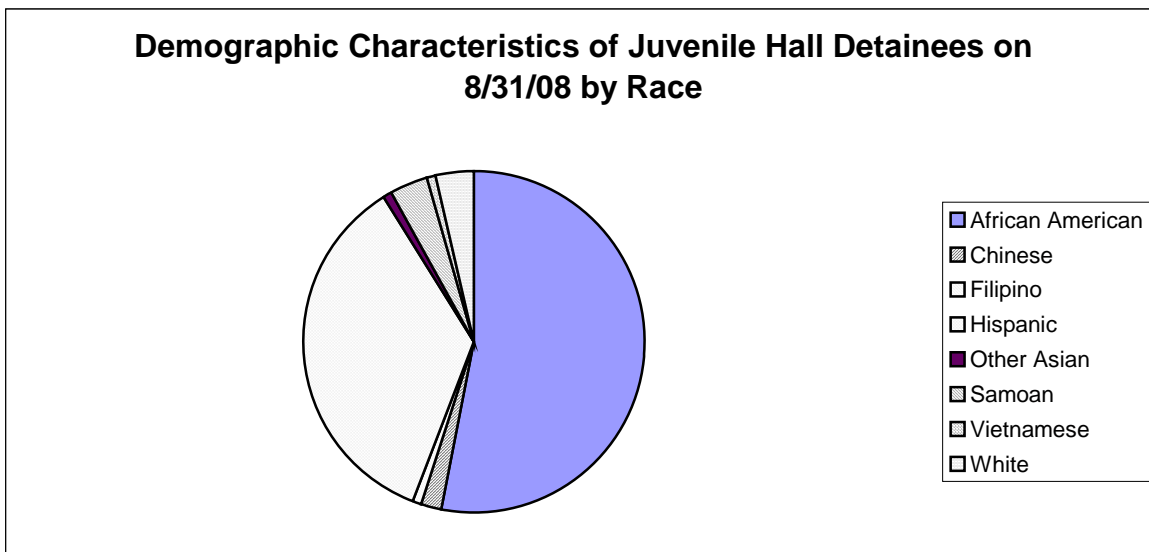
# **Section III**

## **Demographics**

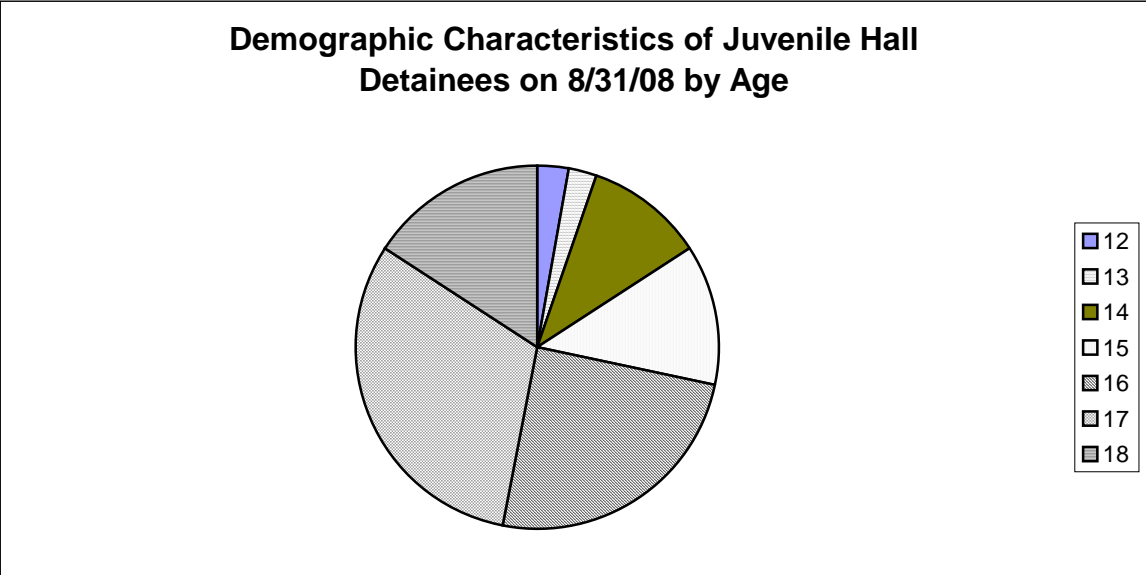
Gender	Frequency	Percent
Female	13	11.50%
Male	100	88.50%
<b>Total</b>	<b>113</b>	<b>100.00%</b>



Race/Ethnic Origin	Frequency	Percent
African American	60	53.10%
Chinese	2	1.77%
Filipino	1	0.88%
Hispanic	40	35.40%
Other Asian	1	0.88%
Samoan	4	3.54%
Vietnamese	1	0.88%
White	4	3.54%
<b>Total</b>	<b>113</b>	<b>100.00%</b>

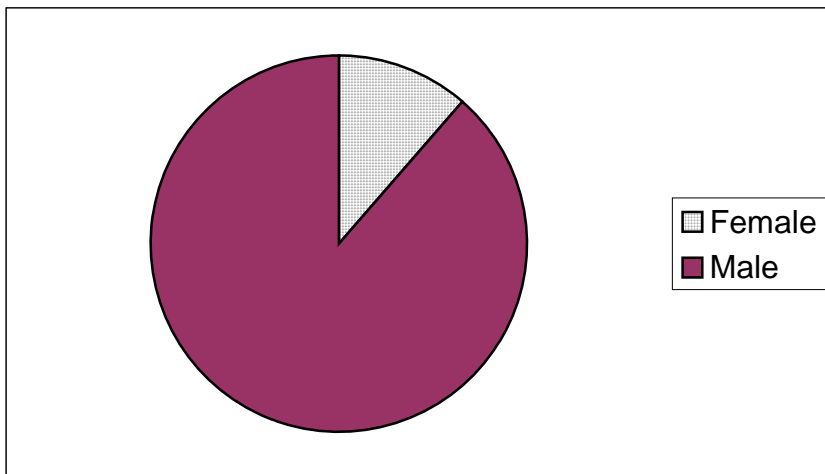


Age	Frequency	Percent
12	3	2.65%
13	3	2.65%
14	12	10.62%
15	14	12.39%
16	28	24.78%
17	35	30.97%
18	18	15.93%
<b>Total</b>	<b>113</b>	<b>100.00%</b>



Demographic Characteristics of Juvenile Hall Detainees  
on 8/31/2008  
Age by Gender

Age	Female	Male	Total	
11	0	0	0	0.00%
12	0	3	3	2.65%
13	1	2	3	2.65%
14	1	11	12	10.62%
15	4	10	14	12.39%
16	4	24	28	24.78%
17	2	33	35	30.97%
18 and over	1	17	18	15.93%
<b>Total</b>	<b>13</b>	<b>100</b>	<b>113</b>	<b>100.00%</b>
	<b>11.50%</b>	<b>88.50%</b>	<b>100.00%</b>	





Demographic Characteristics  
Of Juvenile Hall Detainees on August 31<sup>st</sup>, 2008

---

<b>Geographic Residence of Youth</b>	<b>Count</b>	<b>%</b>
Richmond	0	0.0%
Marina	0	0.0%
North of Market/Downtown	3	2.7%
Treasure Island/Yerba Buena Island	2	1.8%
Western Addition	10	8.8%
South of Market/Tenderloin	1	0.9%
Sunset	3	2.7%
Haight Ashbury/Castro/Upper Market	0	0.0%
Inner Mission	7	6.2%
Potrero	3	2.7%
Parkside	4	3.5%
Ingleside (West of Twin Peaks)	7	6.2%
Outer Mission	15	13.3%
Bayview	23	20.4%
Non-San Francisco and Unavailable	35	31.0%
<b>Total</b>	<b>113</b>	<b>100.0%</b>

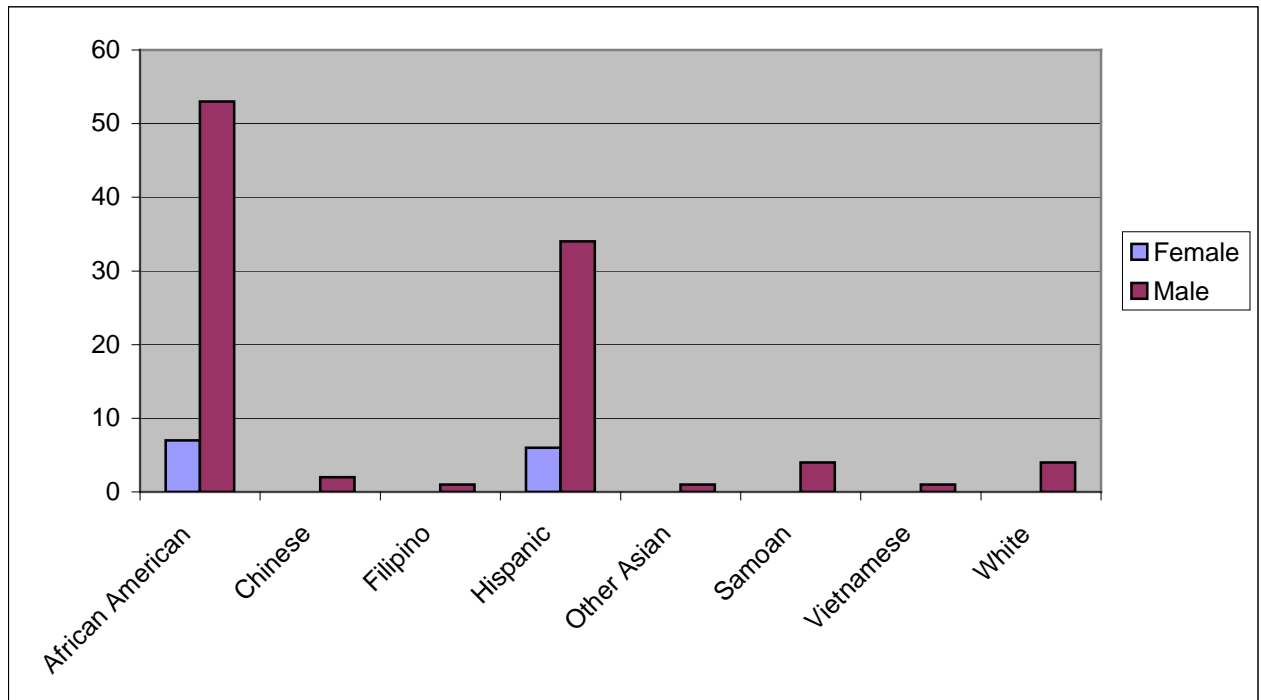
<b>Non-San Francisco and Unavailable</b>	<b>Count</b>	<b>%</b>
Antioch	2	5.7%
Daly City	1	2.9%
Foster City	1	2.9%
Honduras	14	40.0%
Madera	1	2.9%
Pine Bluff	1	2.9%
Pittsburg	1	2.9%
Richmond	1	2.9%
San Leandro	1	2.9%
San Lorenzo	1	2.9%
San Mateo	1	2.9%
Santa Ana	1	
South San Francisco	4	11.4%
Unavailable	5	14.3%
<b>Total</b>	<b>35</b>	<b>97.1%</b>

Demographic Characteristics  
Of Juvenile Hall Detainees on August 31<sup>st</sup>, 2008

---

**Race/Ethnic Origin by Gender**

Race/Ethnicity	Female	Male	Total	%
African American	7	53	60	53.1%
Chinese	0	2	2	1.8%
Filipino	0	1	1	0.9%
Hispanic	6	34	40	35.4%
Other Asian	0	1	1	0.9%
Samoan	0	4	4	3.5%
Vietnamese	0	1	1	0.9%
White	0	4	4	3.5%
<b>Total</b>	<b>13</b>	<b>100</b>	<b>113</b>	<b>100.0%</b>

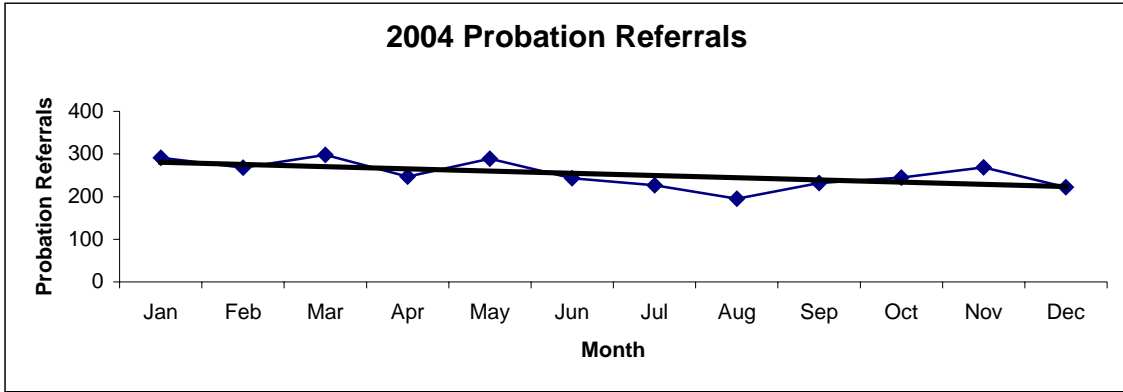


# **Section IV**

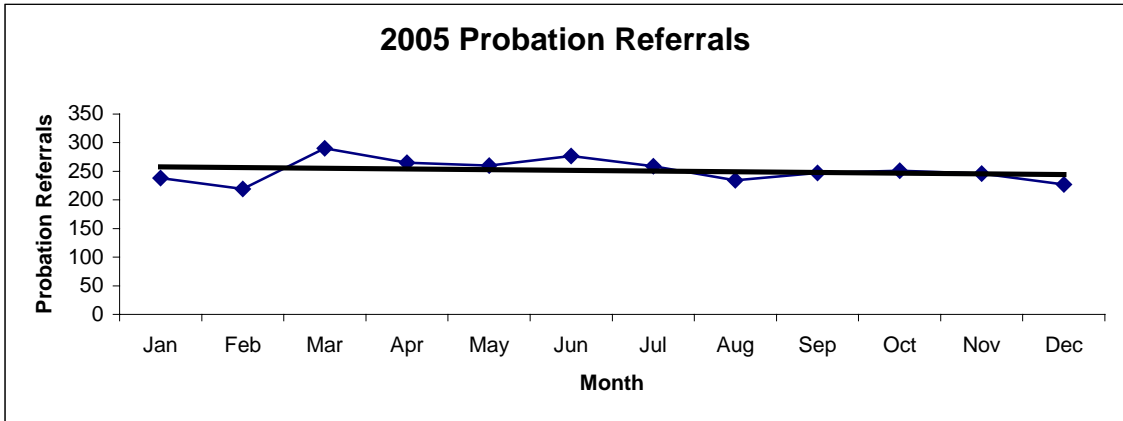
## **Historical Information**

**San Francisco Juvenile Probation Department  
 Probation Referrals (all sources) By Month  
 (2004-2006)**

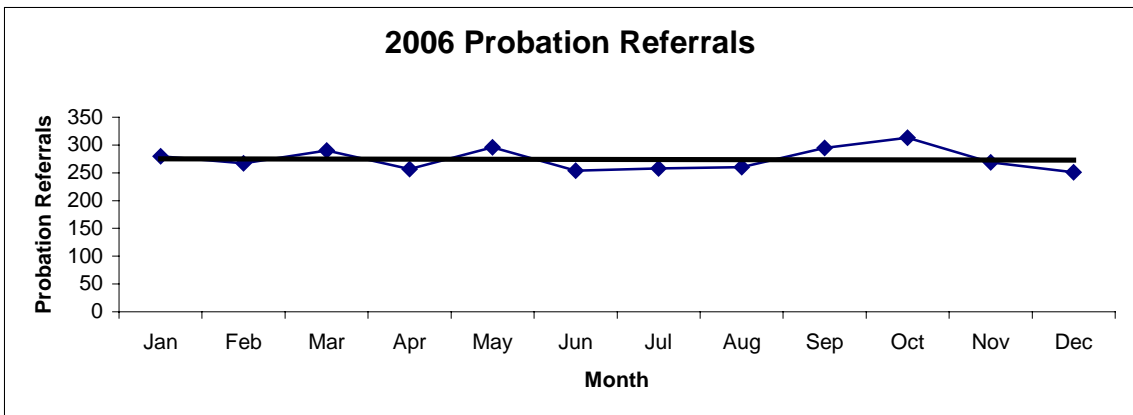
2004 Probation Referrals	Jan	Feb	Mar	Apr	May	Jun	Jul	Aug	Sep	Oct	Nov	Dec	Total
	291	268	298	247	289	243	227	195	232	245	269	222	<b>3026</b>



2005 Probation Referrals	Jan	Feb	Mar	Apr	May	Jun	Jul	Aug	Sep	Oct	Nov	Dec	Total
	238	219	290	265	260	277	259	234	247	251	246	227	<b>3013</b>

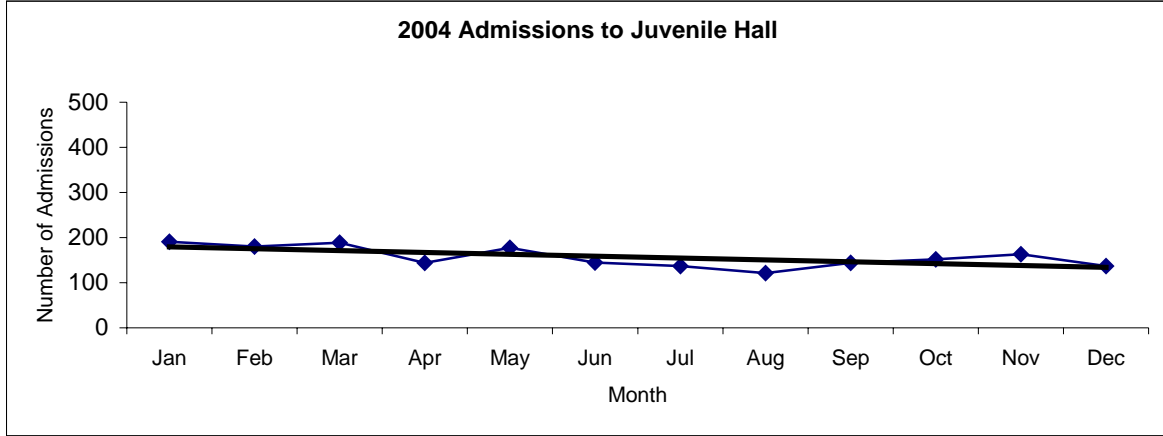


2006 Probation Referrals	Jan	Feb	Mar	Apr	May	Jun	Jul	Aug	Sep	Oct	Nov	Dec	Total
	280	267	290	257	296	254	258	260	295	313	269	251	<b>3290</b>

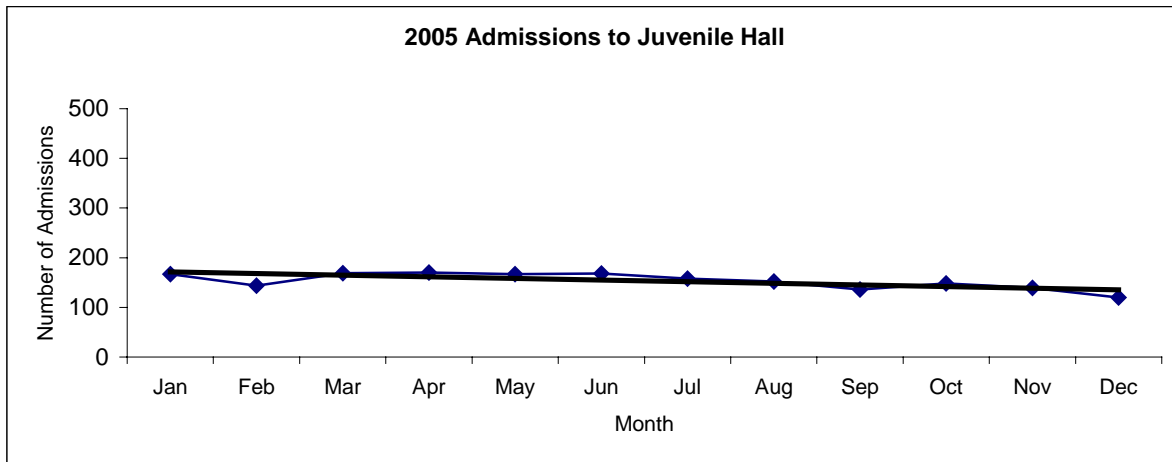


**San Francisco Juvenile Probation  
Juvenile Hall Admissions By Month  
(2004-2006)**

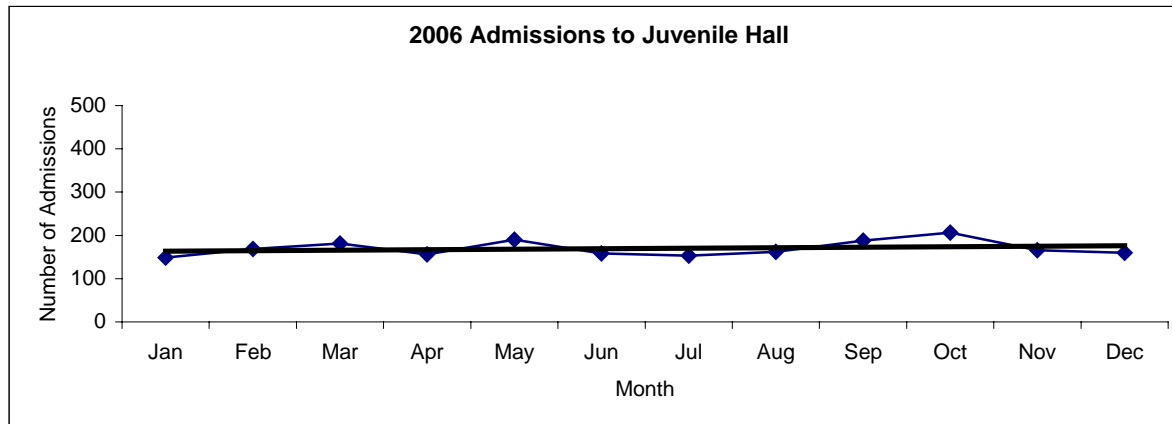
2004 Admissions	Jan	Feb	Mar	Apr	May	Jun	Jul	Aug	Sep	Oct	Nov	Dec	Total
	191	180	189	144	177	145	137	121	144	152	163	137	<b>1880</b>



2005 Admissions	Jan	Feb	Mar	Apr	May	Jun	Jul	Aug	Sep	Oct	Nov	Dec	Total
	167	144	169	170	167	168	158	152	136	148	139	120	<b>1838</b>

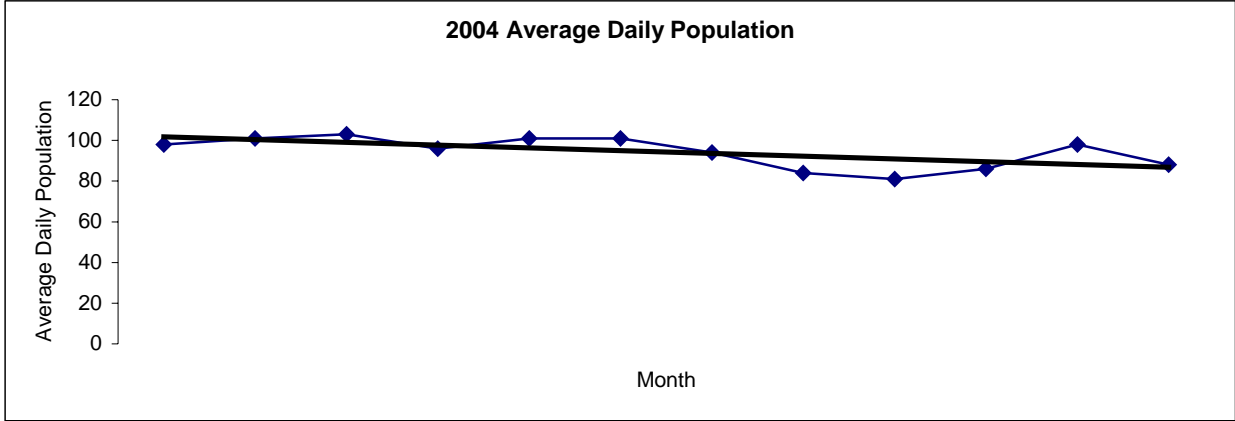


2006 Admissions	Jan	Feb	Mar	Apr	May	Jun	Jul	Aug	Sep	Oct	Nov	Dec	Total
	149	169	181	156	190	158	153	162	188	206	166	160	<b>2038</b>

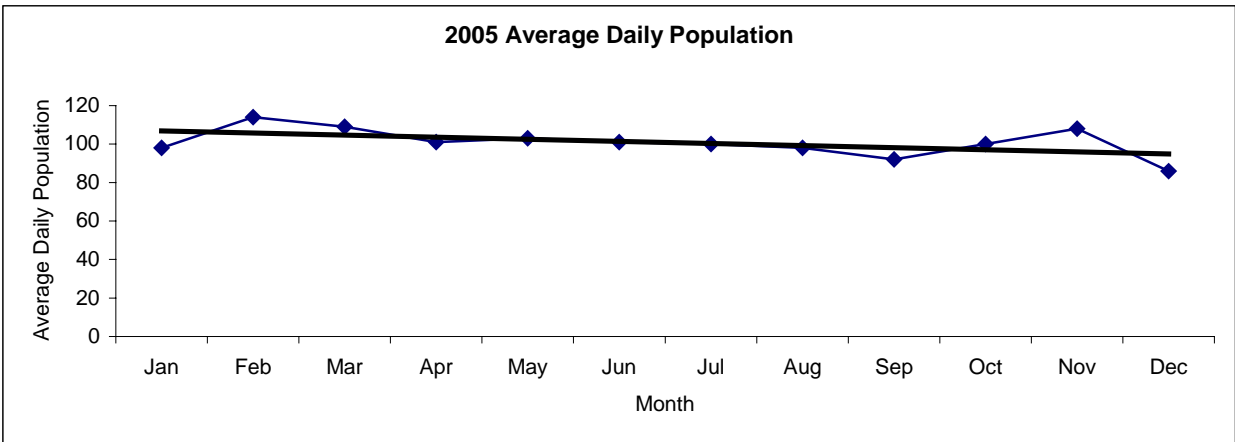


San Francisco Juvenile Probation  
**Juvenile Hall Average Daily Population By Month**  
 (2004-2006)

2004 Avg. Daily Pop.	Jan	Feb	Mar	Apr	May	Jun	Jul	Aug	Sep	Oct	Nov	Dec	Total
	98	101	103	96	101	101	94	84	81	86	98	88	<b>94</b>



2005 Avg. Daily Pop.	Jan	Feb	Mar	Apr	May	Jun	Jul	Aug	Sep	Oct	Nov	Dec	Total
	98	114	109	101	103	101	100	98	92	100	108	86	<b>100</b>



2006 Avg. Daily Pop.	Jan	Feb	Mar	Apr	May	Jun	Jul	Aug	Sep	Oct	Nov	Dec	Total
	81	90	100	99	111	112	107	104	104	128	122	119	<b>106</b>

