

City and County of San Francisco



Juvenile Probation Department

Monthly Report for July 2008

Presented to the Juvenile Probation Commission

August 6th, 2008

William P. Siffermann
Chief Probation Officer

Prepared by Jose Luis Perla
Information Technology Director
(415) 753-7686
jose.perla@sfgov.org

Table of Contents

Section I Summary Reports

Juvenile Hall, Log Cabin Ranch Summary Statistics	1
Probation Services Summary and California Youth Authority Statistics.....	2
Active Cases by Units.....	3

Section II Current Month General Detail

Probation Referrals, Juvenile Admissions And Average Daily Population	4
Juvenile Hall Admissions and Average Daily Population.....	5
Commitments to out-of-home placement	6
Commitments to California Youth Authority	7
Log Cabin Ranch Admissions and Average Daily Population.....	8
Probation Referrals	9
Juvenile Hall And Log Cabin Ranch Incident Report	10
Bay Area Resident Juvenile Hall Comparison	11
Juvenile Hall Admissions	12
Juvenile Hall Detainees by Detention Reason.....	13
Juvenile Hall Average Daily Population by Rated Capacity	14
Juvenile Hall Average Length of Stay	15

Section III Demographics

Juvenile Hall Detainees by Sex and Race/Ethnic Origin.....	16
Juvenile Hall Detainees by Age.....	17
Juvenile Hall Detainees by Age and Sex	18
Juvenile Hall Detainees by Geographic Residence of Youth.....	19
Juvenile Hall Detainees by Race/Ethnic Origin and Sex.....	20

Section IV
Historical Information

2004-2006 Probation Referrals21
2004-2006 Juvenile Hall Admissions22
2004-2006 Juvenile Hall Average Daily Population23



Section I

Summary Reports

Summary Report for the Month of July 2008

Juvenile Hall	<i>June 2007</i>	<i>June 2008</i>	<i>July 2007</i>	<i>July 2008</i>	<i>YTD 2007</i>	<i>YTD 2008</i>
Admissions	185	162	140	161	1140	1135
Average Daily Population	114	124	120	119	122	122
Average Length of Stay (Releases)	18.26	20.86	19.38	20.44	20.37	21.80
Average Length of Stay (In Custody)	47.27	50.23	54.78	57.63	45.63	47.98
Releases	183	172	134	176	1135	1134
Log Cabin Ranch						
Admissions:						
First Time Commitments	4	1	2	3	27	8
Recommitments	1	0	0	1	3	1
<i>Total</i>	5	1	2	4	30	9
Releases:						
Graduated	2	3	2	1	19	14
Escape	0	0	0	0	1	0
Other releases	6	1	2	0	13	9
<i>Total</i>	8	4	4	1	33	23
Average Daily Population	31	13	27	13	29	17
Incident Reports						
Juvenile Hall	36	35	42	73	142	400
Log Cabin Ranch	8	0	4	0	24	7
<i>Total</i>	44	35	46	73	166	407

Summary Report for the Month of July 2008

Probation Services	<i>June 2008</i>	<i>July 2008</i>	<i>Year To Date 2008</i>
Probation Referrals	224	268	1799
Total Petitions including violation of probation	124	128	887
Selected Court Dispositions:			
California Youth Authority	0	0	1
Log Cabin Ranch	2	3	9
Out of Home Placement	19	9	138
Ward Probation	28	37	220
Non-Ward Probation (725a WI)	3	3	19
Informal Probation (654 WI)	12	25	105
Violation of Probation Petitions Filed	11	19	85
California Youth Authority Monthly Count San Francisco County Juvenile Court Cases July 31st, 2008			
Category	Institutions	Parole	
Males			
White	0	1	
Hispanic	1	7	
African American	3	14	
Asian	0	1	
Native American	0	0	
Filipino	0	0	
Pacific Islander	0	1	
Other	0	0	
Total	4	24	
Females			
White	0	0	
Hispanic	0	2	
African American	1	0	
Asian	0	0	
Native American	0	0	
Filipino	0	0	
Pacific Islander	0	0	
Other	0	0	
Total	1	2	
Grand Total	5	26	

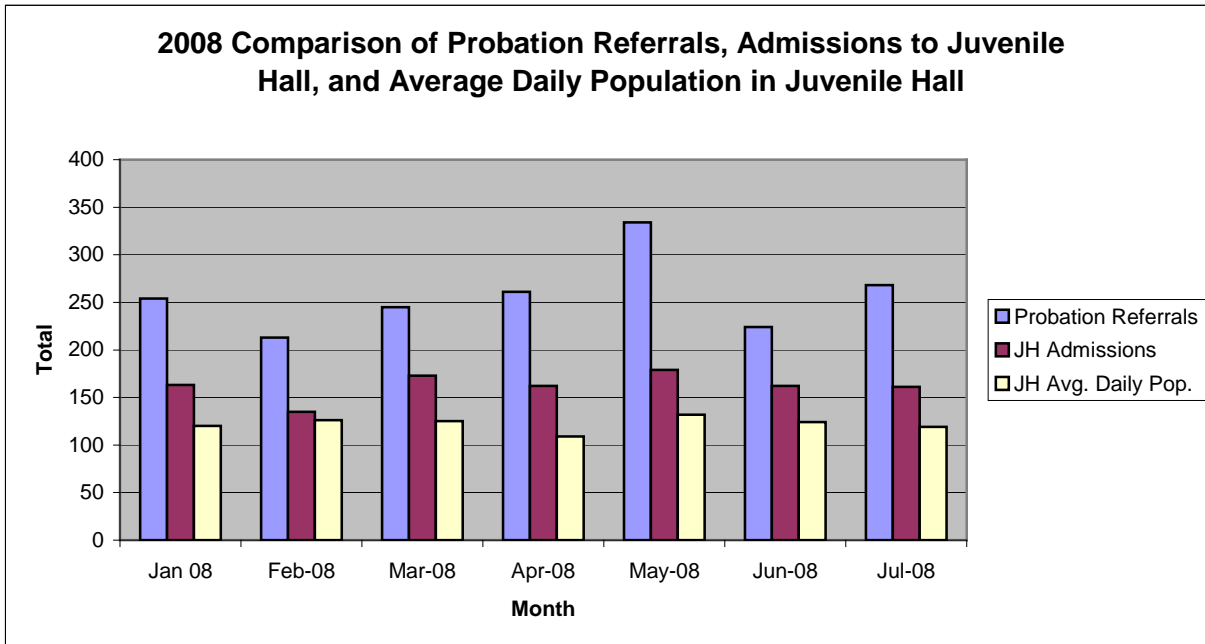
Summary Report for the Month of July 2008

Probation Services			
Active Cases by Units	June 2008	July 2008	July Average # Youth by PO
CARC	162	179	179
Intake Green (Custody Screening Investigation)	215	207	25
Intake Gold (Probation Services 1)	299	285	40
Probation Services 2	198	204	20
Probation Services 3	335	345	34
Probation Services 4	256	247	30
Special Services	34	22	5
<i>Total</i>	1499	1489	48
Total Active Intake Cases	722	713	
Total Probation/Supervision Cases	777	776	

Section II
Current Month
General Detail

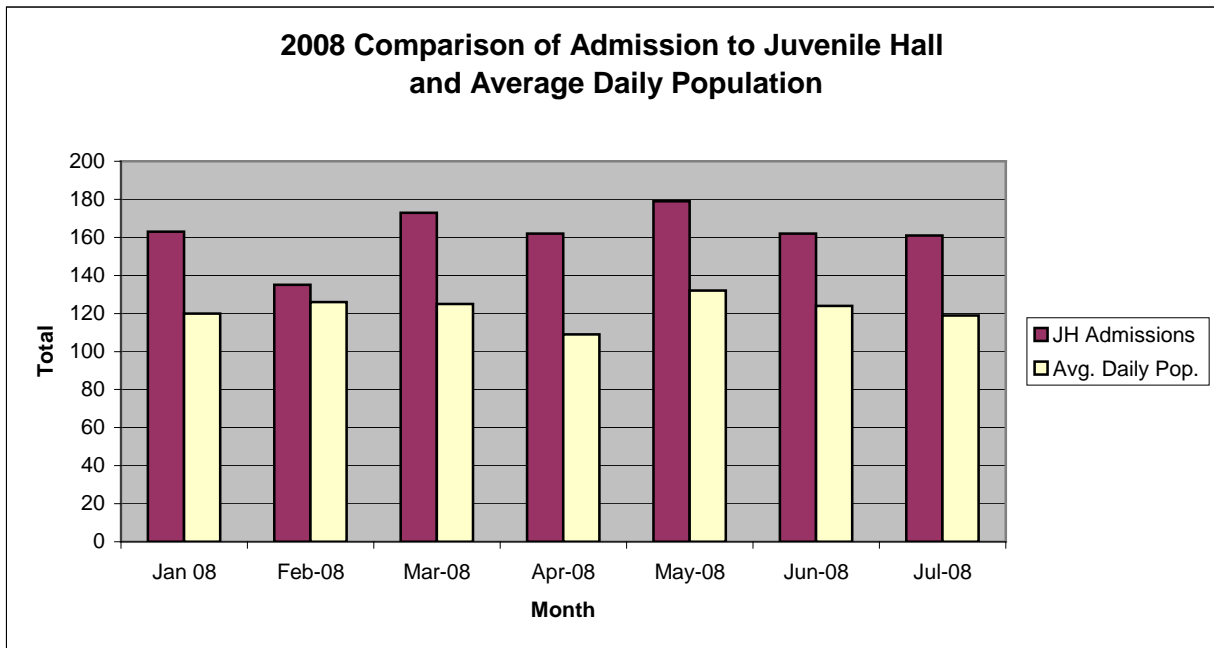
San Francisco Juvenile Probation Department

	Jan 08	Feb-08	Mar-08	Apr-08	May-08	Jun-08	Jul-08	Aug-08	Sep-08	Oct-08	Nov-08	Dec-08
Probation Referrals	254	213	245	261	334	224	268					
JH Admissions	163	135	173	162	179	162	161					
JH Avg. Daily Pop.	120	126	125	109	132	124	119					



San Francisco Juvenile Probation Department

	Jan 08	Feb-08	Mar-08	Apr-08	May-08	Jun-08	Jul-08	Aug-08	Sep-08	Oct-08	Nov-08	Dec-08
JH Admissions	163	135	173	162	179	162	161					
Avg. Daily Pop.	120	126	125	109	132	124	119					

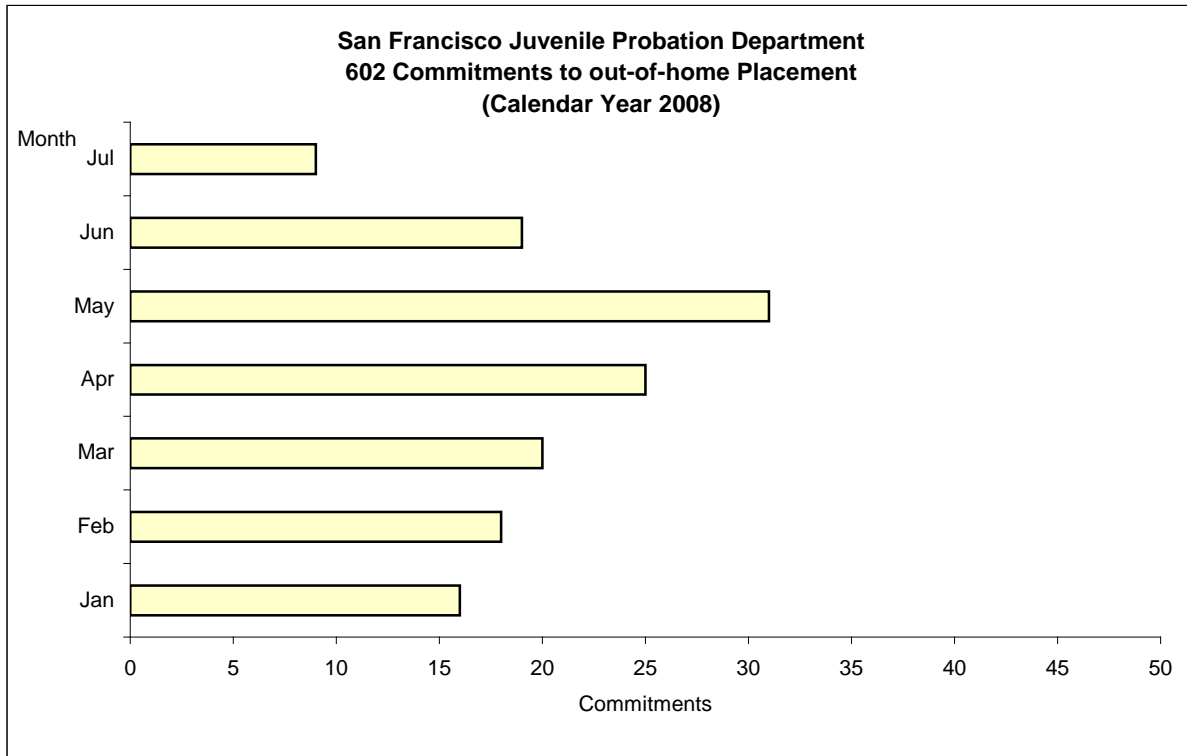


Out-of-Home Placement¹

Commitments of 602's

Calendar Year 2008

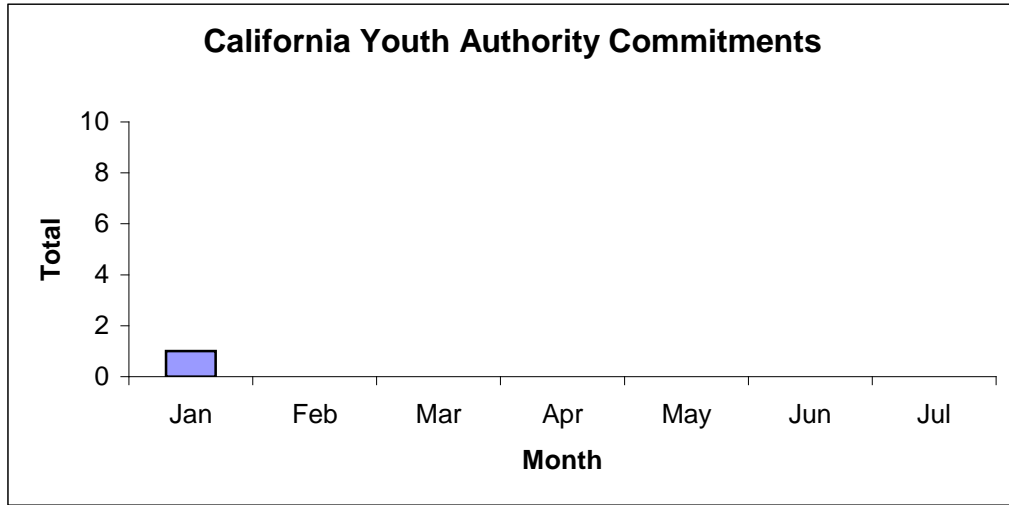
Commitments	Jan	Feb	Mar	Apr	May	Jun	Jul	Aug	Sep	Oct	Nov	Dec	Total
2008	16	18	20	25	31	19	9						138



¹ This report is based on 602 Commitments to out-of-home placements. If there is a 601 commitment, it will show as a footnote here. Figures are regularly updated to include reports from previous reporting periods.

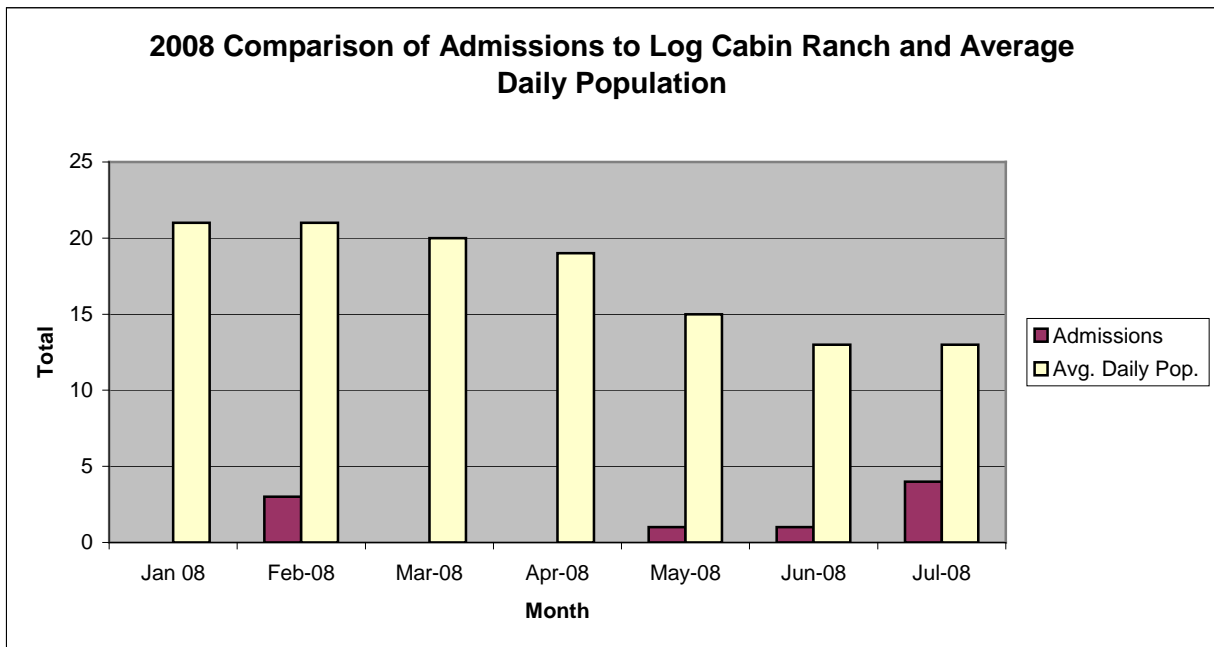
California Youth Authority
Commitments
(Calendar Year 2008)

Commitments	Jan	Feb	Mar	Apr	May	Jun	Jul	Aug	Sep	Oct	Nov	Dec	Total
2008	1	0	0	0	0	0	0						1



San Francisco Juvenile Probation Department

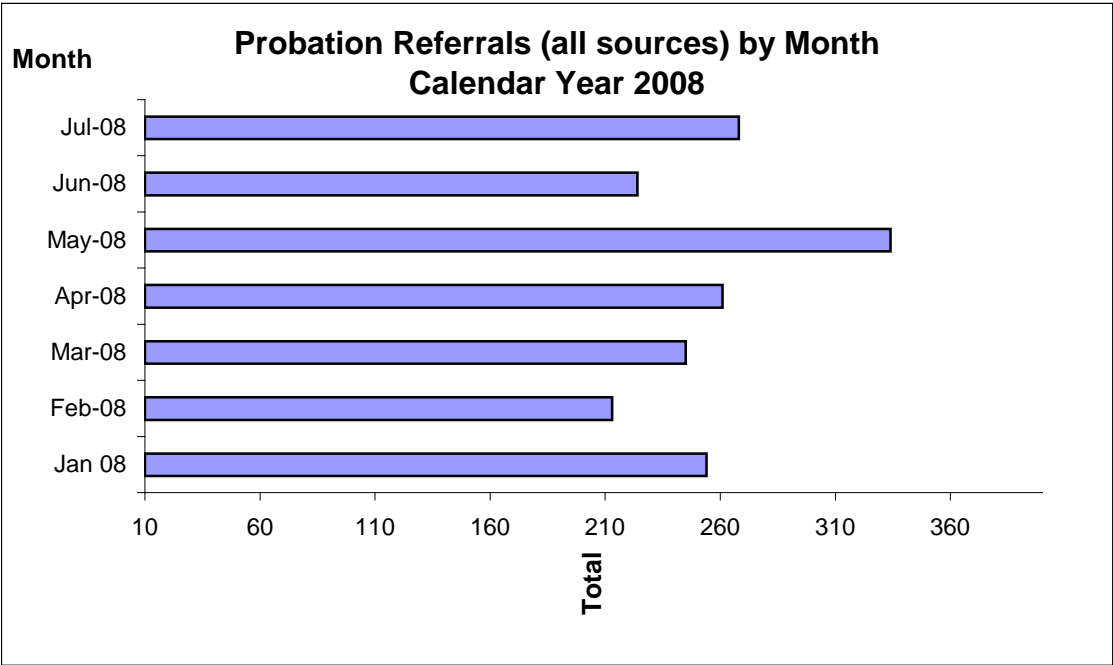
	Jan 08	Feb-08	Mar-08	Apr-08	May-08	Jun-08	Jul-08	Aug-08	Sep-08	Oct-08	Nov-08	Dec-08
Admissions	0	3	0	0	1	1	4					
Avg. Daily Pop.	21	21	20	19	15	13	13					



Probation Referrals by Month Calendar Year 2008

Probation Referrals (all sources) by Month (602 W&I)

Jan 08	254
Feb-08	213
Mar-08	245
Apr-08	261
May-08	334
Jun-08	224
Jul-08	268
Aug-08	
Sep-08	
Oct-08	
Nov-08	
Dec-08	

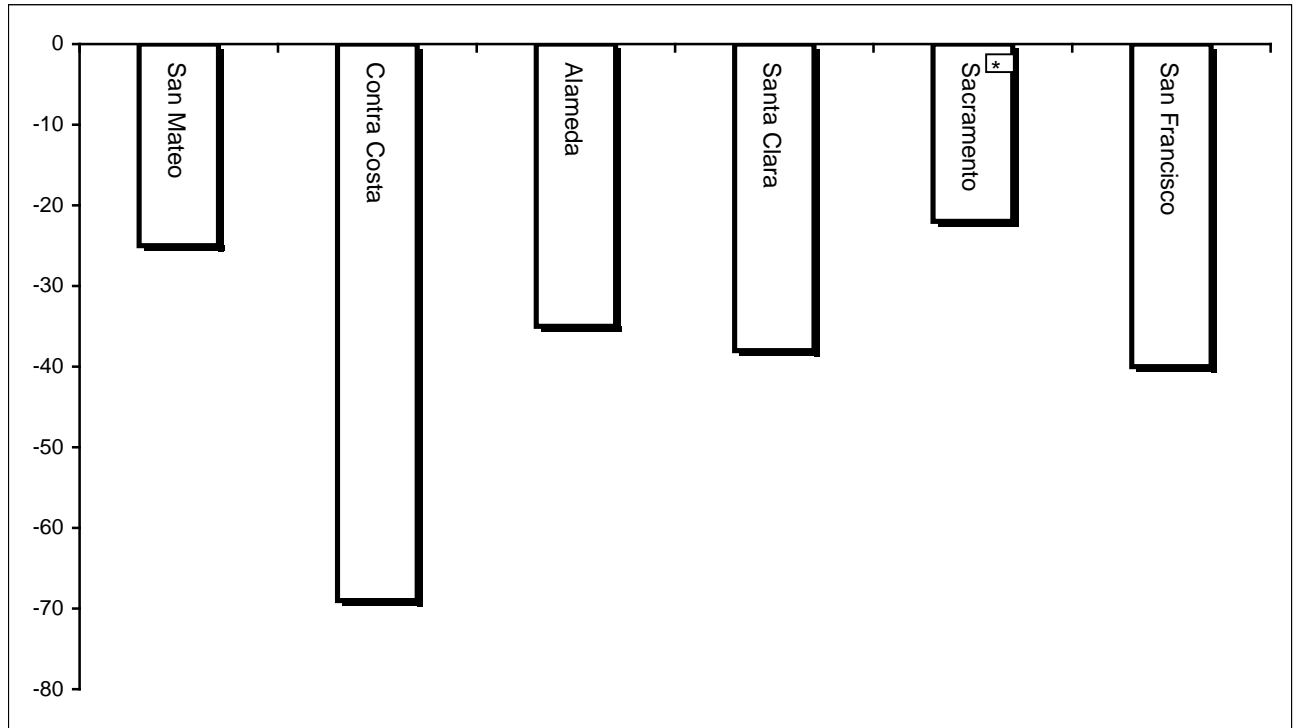


SAN FRANCISCO JUVENILE PROBATION DEPARTMENT
MONTHLY INCIDENT REPORT FORM
MONTH/YEAR: JULY 2008

Log Cabin Ranch	Battery on Staff	Injury to Staff due to Restraint of Minor	Fight	Battery Youth on Youth	Attempted Escape	AWOL	Attempted Suicide	Serious Contraband (Weapon Illegal Drug)	Use of Restraints	Self Inflicted Injuries
	0	0	0	0	0	0	0	0	0	0
	Battery on Staff with Injury	Fire	Fight with Injury	Battery Youth on Youth with Injury	Escape	Death	Suicide	Major Property Destruction	Use of Force	
0	0	0	0	0	0	0	0	0	0	
Juvenile Hall	Battery on Staff	Injury to Staff due to Restraint of Minor	Fight	Battery Youth on Youth	Attempted Escape	AWOL	Attempted Suicide	Serious Contraband (Weapon Illegal Drug)	Use of Restraints	Self Inflicted Injuries
	6	1	7	3	0	0	0	23	7	2
	Battery on Staff with Injury	Fire	Fight with Injury	Battery Youth on Youth with Injury	Escape	Death	Suicide	Major Property Destruction	Use of Force	
0	0	5	3	0	0	0	0	1	15	

Bay Area Resident Juvenile Hall Comparison Over/Under Capacity

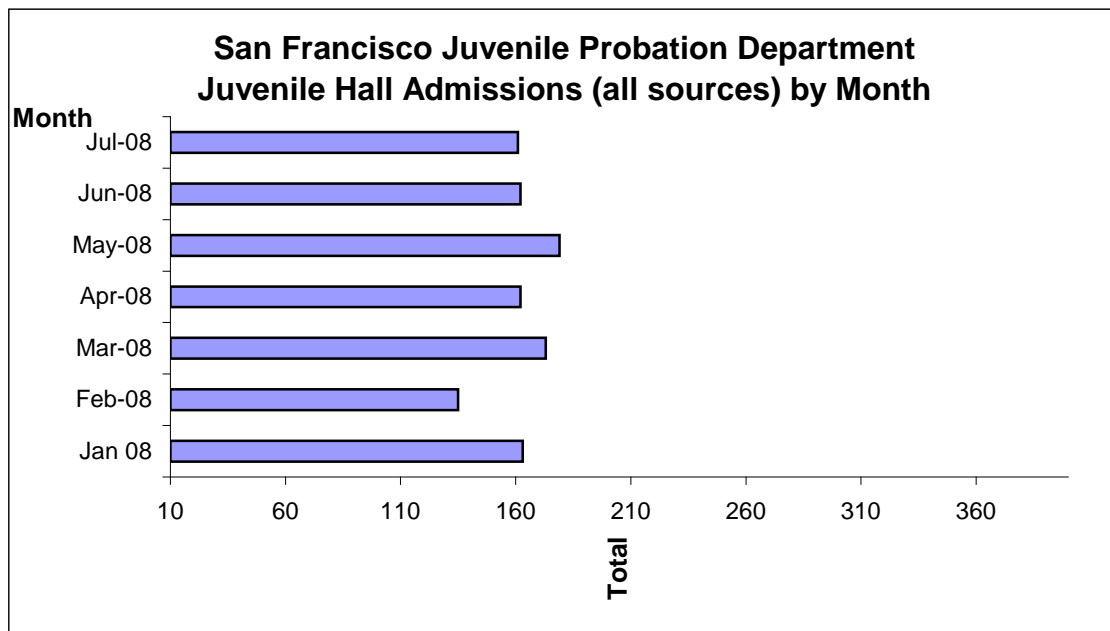
on August 4th, 2008



	Rated Capacity	Actual	Over/Under Capacity
San Mateo	180	155	-25
Contra Costa	240	171	-69
Alameda	280	245	-35
Santa Clara	360	322	-38
Sacramento	308	286	-22
San Francisco	150	110	-40

Juvenile Hall Admissions by Month Calendar Year 2008

Jan 08	163
Feb-08	135
Mar-08	173
Apr-08	162
May-08	179
Jun-08	162
Jul-08	161
Aug-08	
Sep-08	
Oct-08	
Nov-08	
Dec-08	

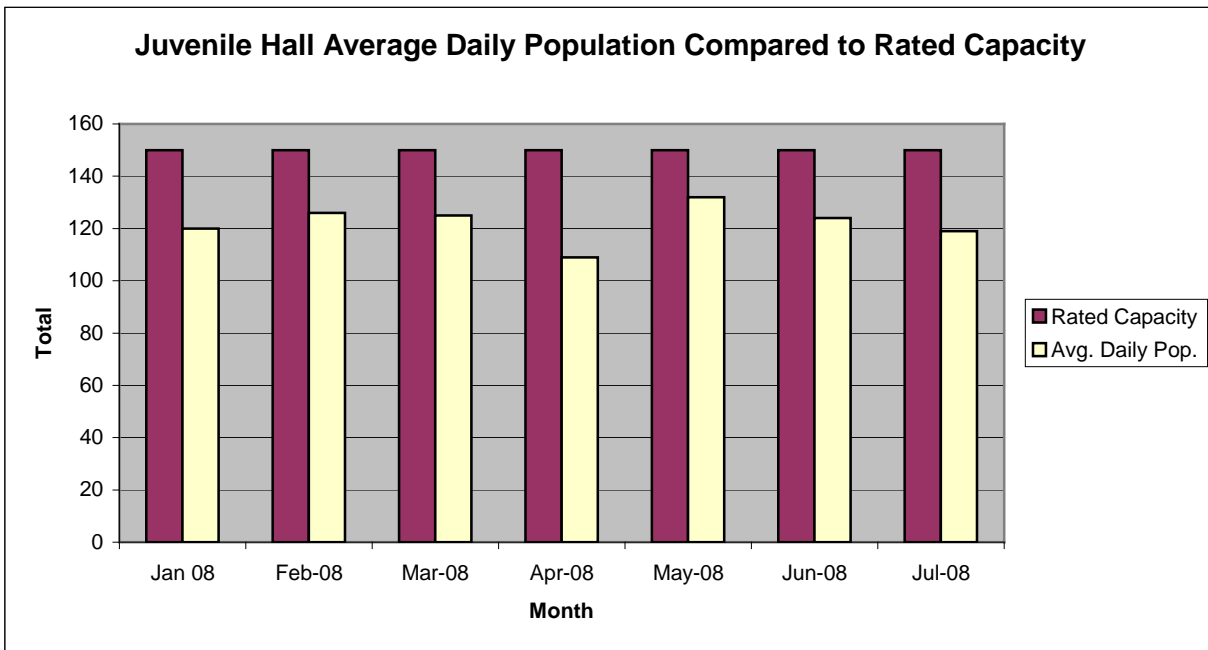


Characteristics of Juvenile Hall Detainees on July 31st, 2008

Detention Reason	Offense Code	*MF	Count	%	
MURDER	187 (A) PC	F	4	3.5%	
ATTEMPTED MURDER	664 /187 (A) PC	F	2	1.7%	
AGGRAVATED MAYHEM	205 PC	F	1	0.9%	
ARSON:INHABITED STRUCTURE/PROPERTY	451 (B) PC	F	1	0.9%	
ROBBERY	211 PC	F	10	8.7%	
ASSAULT W/DEADLY WEAPON W/LIKELY GBI ON CUSTODIAL OFFICER	245.3 PC	F	2	1.7%	
TRANSPORT/SELL NARCOTIC/CONTROLLED SUBSTANCE	11352 (A) HS	F	27	23.5%	
POSSESS/PURCHASE COCAINE BASE FOR SALE	11351.5 HS	F	2	1.7%	
ROBBERY:SECOND DEGREE	212.5(C) PC	F	1	0.9%	
POSSESS SPECIFIED CONTROLLED SUBSTANCE AND LOADED FIREARM	11370.1 HS	F	1	0.9%	
INFLECT CORPORAL INJURY ON SPOUSE/COHABITANT	273.5 PC	F	2	1.7%	
ASSAULT WITH FIREARM ON PERSON	245 (A)(2) PC	F	1	0.9%	
FORCE OR ADW NOT FIREARM:GBI LIKELY	245 (A)(1) PC	F	3	2.6%	
POSSESS NARCOTIC CONTROLLED SUBSTANCE	11350 (A) HS	F	1	0.9%	
POSSESS MARIJUANA FOR SALE	11359 HS	F	2	1.7%	
FELON/ADDICT/ETC POSSESS FIREARM	12021 (A)(1) PC	F	2	1.7%	
TAMPER WITH IDENTIFICATION MARKS ON FIREARM	12090 PC	F	1	0.9%	
CARRY CONCEALED WEAPON IN VEHICLE W/PRIOR FELONY CONVICTION	12025 (A)(1) PC	F	4	3.5%	
WILLFUL DISCHARGE FIREARM IN NEGLIGENT MANNER	246.3 PC	F	1	0.9%	
FORGE OFFICIAL SEAL	472 PC	F	1	0.9%	
GRAND THEFT FROM PERSON	487 (C) PC	F	1	0.9%	
RECEIVE/ETC KNOWN STOLEN PROPERTY	496 (A) PC	F	1	0.9%	
POSSESS ANY ASSAULT WEAPON	12280 (B) PC	F	1	0.9%	
MINOR ATT ESCAPE/ESCAPE COUNTY FACILITY W/FORCE OR VIOLENCE	871 (B) WI	F	1	0.9%	
MINOR ILLEGALLY POSSESS CONCEALED WEAPON WITH PRIOR	12101 (A)(1) PC	F	2	1.7%	
VANDALISM (\$400 OR MORE)	594 (B)(1) PC	F	1	0.9%	
BURGLARY	459 PC	M	1	0.9%	
MINOR ATTEMPT ESCAPE/ESCAPE COUNTY FACILITY	871 (A) WI	M	2	1.7%	
VANDALISM:DAMAGE PROPERTY	594 (A)(2) PC	M	1	0.9%	
PETTY THEFT	484 (A) PC	M	2	1.7%	
LOITER:INTENT:PROSTITUTION	653.22(A) PC	M	1	0.9%	
DISORDERLY CONDUCT:ALCOHOL	647 (F) PC	M	1	0.9%	
FAIL TO OBEY ORDER OF JUVENILE COURT 602 WI	777 (A)(2) WI	M	1	0.9%	
CHANGE OF PLACEMENT/PLACEMENT FAILURE	737 WI	M	2	1.7%	
WARRANT	WRNT602		16	13.9%	
COURT ORDER	CTORD 602		12	10.4%	
*F=Felony; M=Misdemeanor			Total	115	100.0%

San Francisco Juvenile Probation Department

	Jan 08	Feb-08	Mar-08	Apr-08	May-08	Jun-08	Jul-08	Aug-08	Sep-08	Oct-08	Nov-08	Dec-08
Rated Capacity	150	150	150	150	150	150	150	150	150	150	150	150
Avg. Daily Pop.	120	126	125	109	132	124	119					



Juvenile Hall Average Length of Stay

For the Month of July 2008

¹Released

Range of Days	<i>1-10 days</i>	<i>11-20 days</i>	<i>21-30 days</i>	<i>30 or more days</i>	Total
# of Youth Released	107	25	12	32	176
% of Population	60.80%	14.20%	6.82%	18.18%	100%
# of Days	331	384	309	2574	3598
% of Total Days	9.20%	10.67%	8.59%	71.54%	100%
Average Length of Stay	3.09	15.36	25.75	80.44	20.44

²In Custody

Range of Days	<i>1-10 days</i>	<i>11-20 days</i>	<i>21-30 days</i>	<i>30 or more days</i>	Total
# of Youth Detained	24	24	9	58	115
% of Population	20.87%	20.87%	7.83%	50.43%	100%
# of Days	97	349	225	5957	6628
% of Total Days	1.46%	5.27%	3.39%	89.88%	100%
Average Length of Stay	4.04	14.54	25.00	102.71	57.63

Notes: Less than one day of stay is calculated as one day.

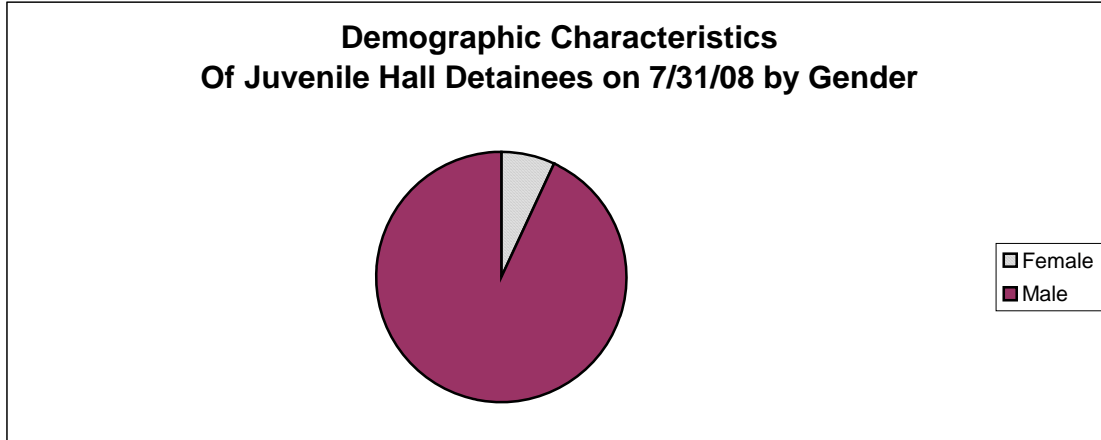
¹Length of stay is calculated according to release date for those who are released.

²For those still in custody, length of stay is calculated at the last day of the month.

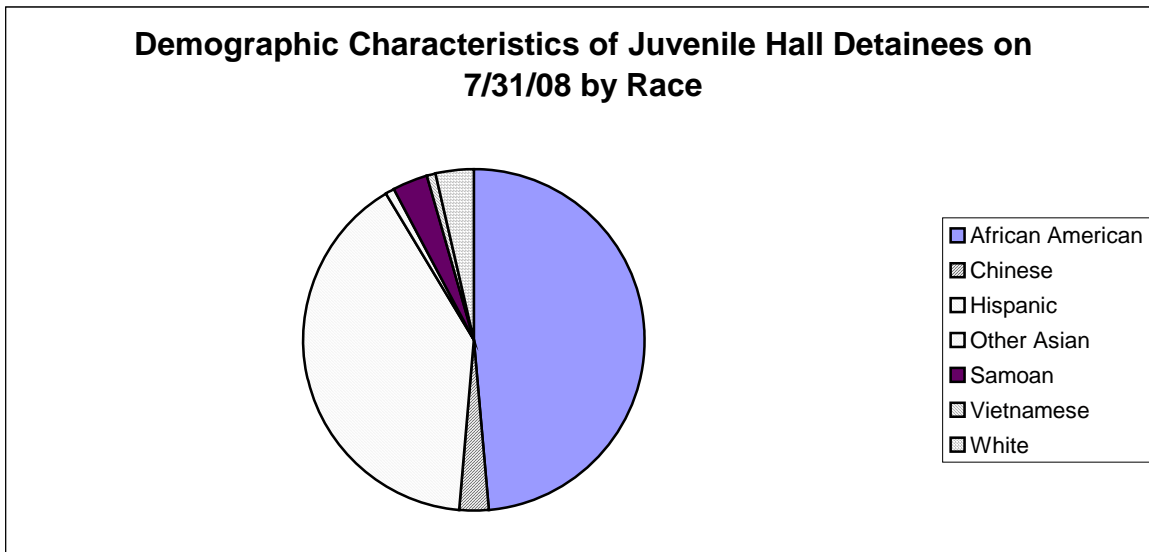
Section III

Demographics

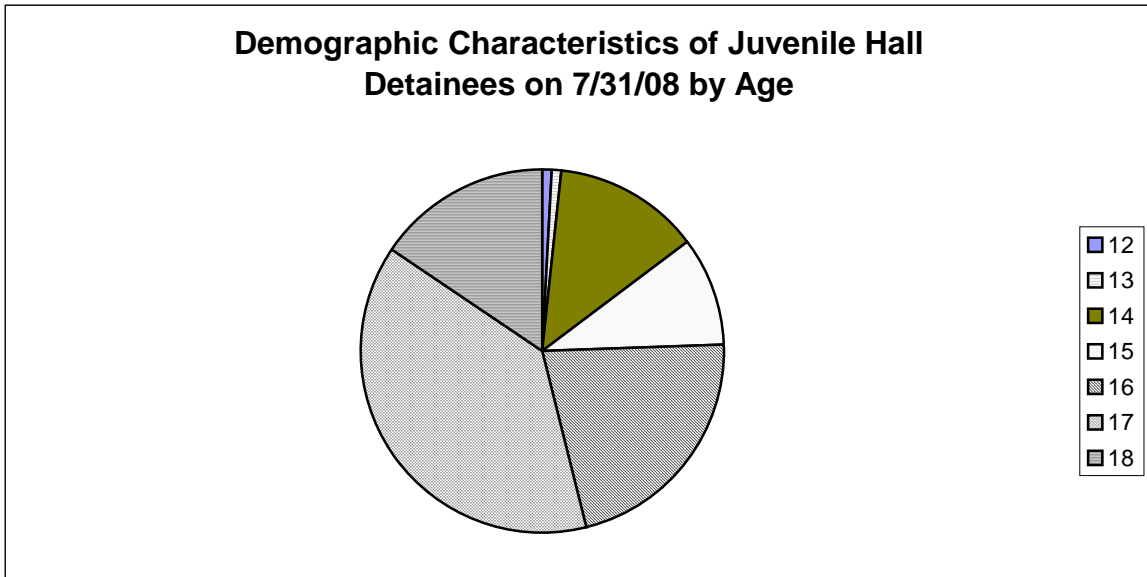
Gender	Frequency	Percent
Female	8	6.96%
Male	107	93.04%
Total	115	100.00%



Race/Ethnic Origin	Frequency	Percent
African American	56	48.70%
Chinese	3	2.61%
Hispanic	46	40.00%
Other Asian	1	0.87%
Samoan	4	3.48%
Vietnamese	1	0.87%
White	4	3.48%
Total	115	100.00%

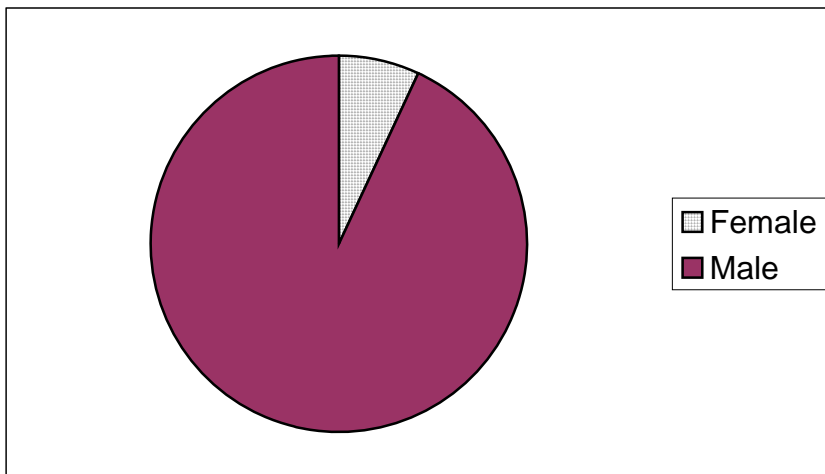


Age	Frequency	Percent
12	1	0.87%
13	1	0.87%
14	15	13.04%
15	11	9.57%
16	25	21.74%
17	44	38.26%
18	18	15.65%
Total	115	100.00%



Demographic Characteristics of Juvenile Hall Detainees
on 7/31/2008
Age by Gender

Age	Female	Male	Total	
11	0	0	0	0.00%
12	0	1	1	0.87%
13	0	1	1	0.87%
14	1	14	15	13.04%
15	1	10	11	9.57%
16	1	24	25	21.74%
17	4	40	44	38.26%
18 and over	1	17	18	15.65%
Total	8	107	115	100.00%
	6.96%	93.04%	100.00%	



Demographic Characteristics
Of Juvenile Hall Detainees on July 31st, 2008

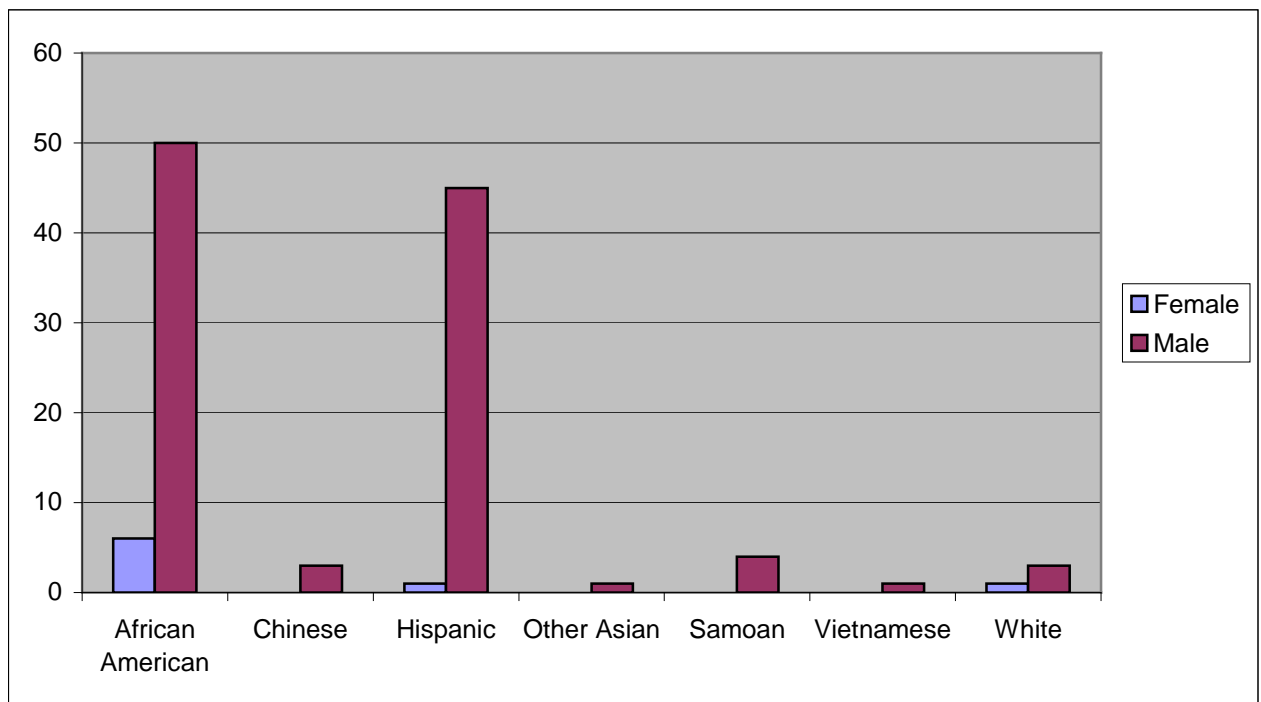
Geographic Residence of Youth	Count	%
Richmond	2	1.7%
Marina	1	0.9%
North of Market/Downtown	4	3.5%
Treasure Island/Yerba Buena Island	2	1.7%
Western Addition	8	7.0%
South of Market/Tenderloin	1	0.9%
Sunset	2	1.7%
Haight Ashbury/Castro/Upper Market	0	0.0%
Inner Mission	7	6.1%
Potrero	5	4.3%
Parkside	5	4.3%
Ingleside (West of Twin Peaks)	3	2.6%
Outer Mission	9	7.8%
Bayview	21	18.3%
Non-San Francisco and Unavailable	45	39.1%
Total	115	100.0%

Non-San Francisco and Unavailable	Count	%
Antioch	2	4.4%
Brentwood	1	2.2%
Honduras	28	62.2%
Madera	1	2.2%
Mexico	1	2.2%
Oakland	2	4.4%
Pine Bluff	1	2.2%
Pittsburg	1	2.2%
Rohnert Park	1	2.2%
San Jose	1	2.2%
San Lorenzo	1	2.2%
San Mateo	1	2.2%
South San Francisco	3	6.7%
Union City	1	2.2%
Total	45	100.0%

Demographic Characteristics
Of Juvenile Hall Detainees on July 31st, 2008

Race/Ethnic Origin by Gender

Race/Ethnicity	Female	Male	Total	%
African American	6	50	56	48.7%
Chinese	0	3	3	2.6%
Hispanic	1	45	46	40.0%
Other Asian	0	1	1	0.9%
Samoan	0	4	4	3.5%
Vietnamese	0	1	1	0.9%
White	1	3	4	3.5%
Total	8	107	115	100.0%

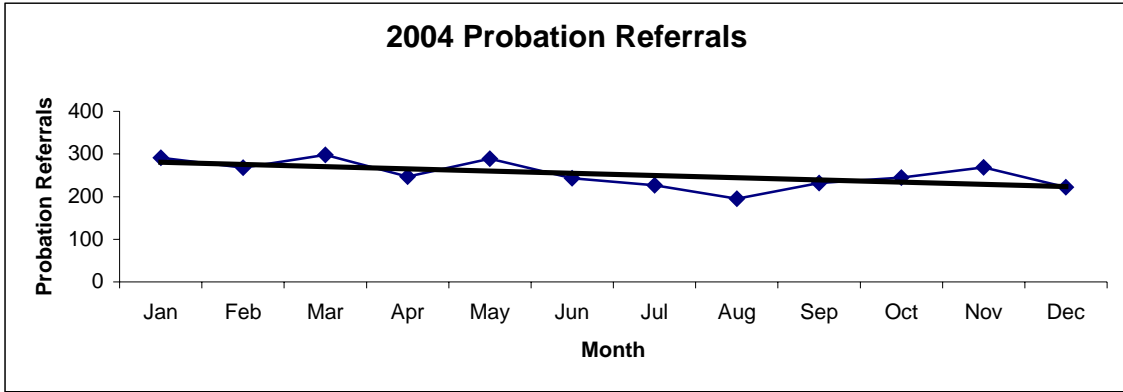


Section IV

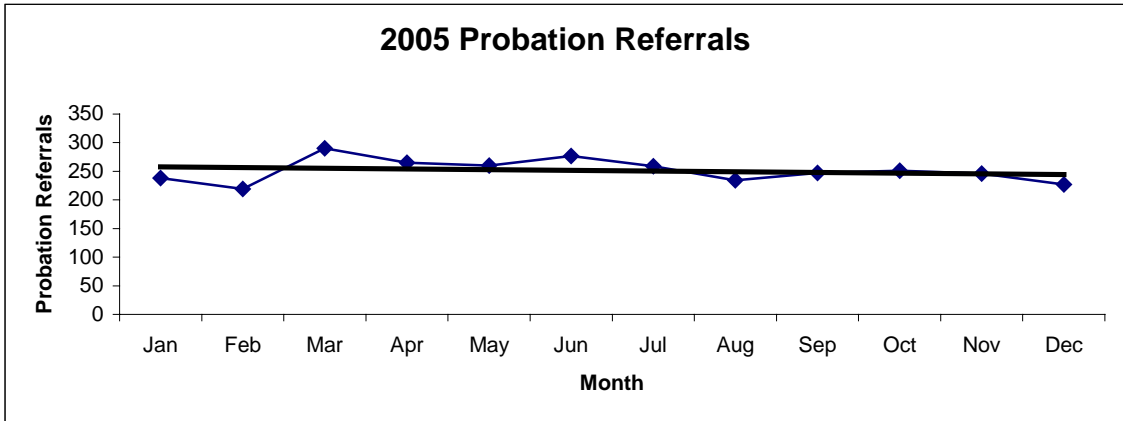
Historical Information

San Francisco Juvenile Probation Department
Probation Referrals (all sources) By Month
 (2004-2006)

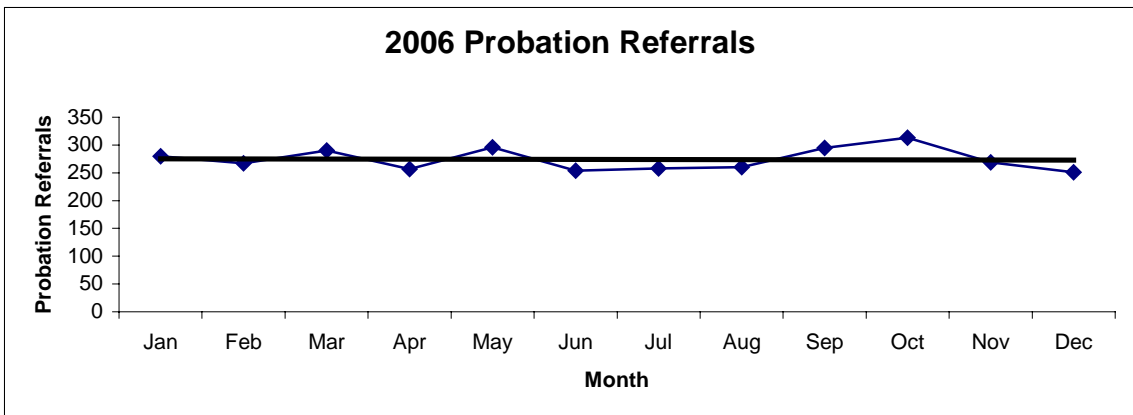
2004 Probation Referrals	Jan	Feb	Mar	Apr	May	Jun	Jul	Aug	Sep	Oct	Nov	Dec	Total
	291	268	298	247	289	243	227	195	232	245	269	222	3026



2005 Probation Referrals	Jan	Feb	Mar	Apr	May	Jun	Jul	Aug	Sep	Oct	Nov	Dec	Total
	238	219	290	265	260	277	259	234	247	251	246	227	3013

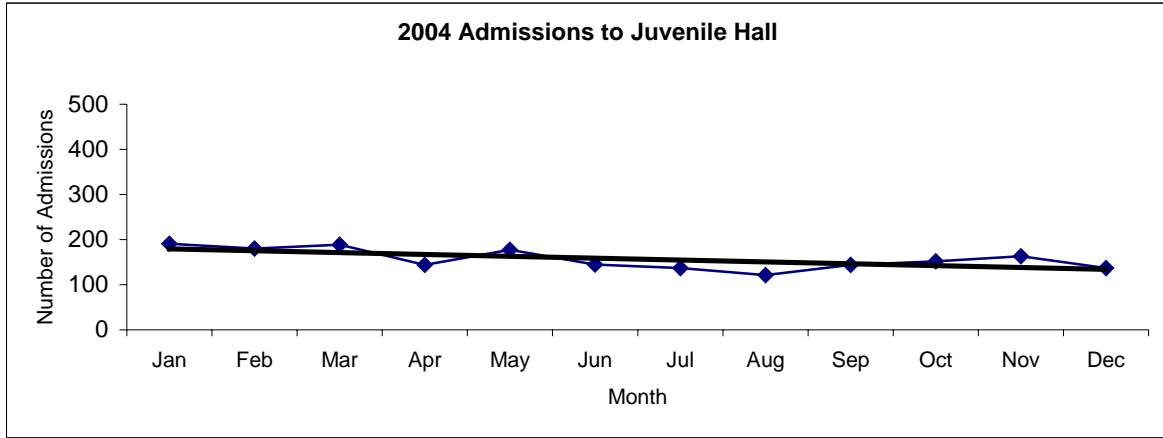


2006 Probation Referrals	Jan	Feb	Mar	Apr	May	Jun	Jul	Aug	Sep	Oct	Nov	Dec	Total
	280	267	290	257	296	254	258	260	295	313	269	251	3290

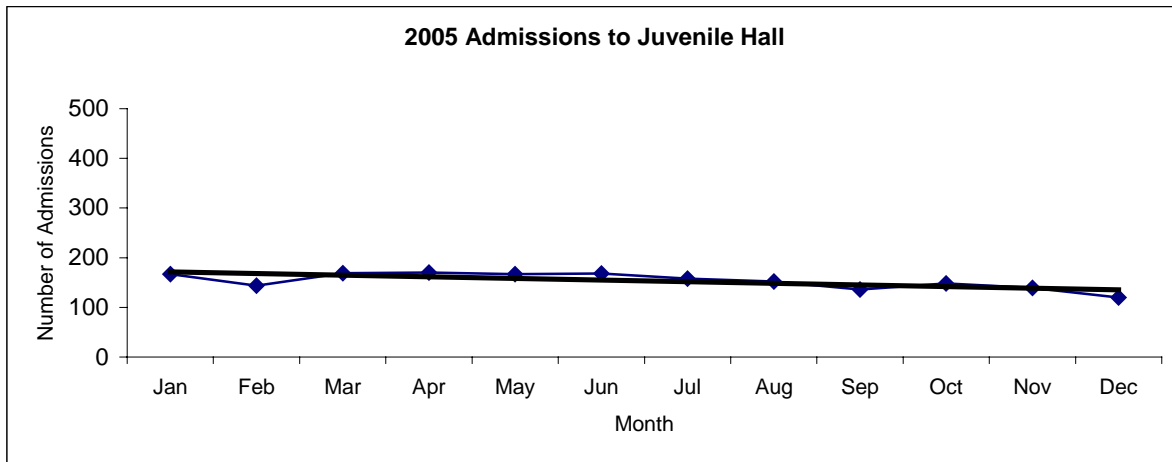


**San Francisco Juvenile Probation
Juvenile Hall Admissions By Month
(2004-2006)**

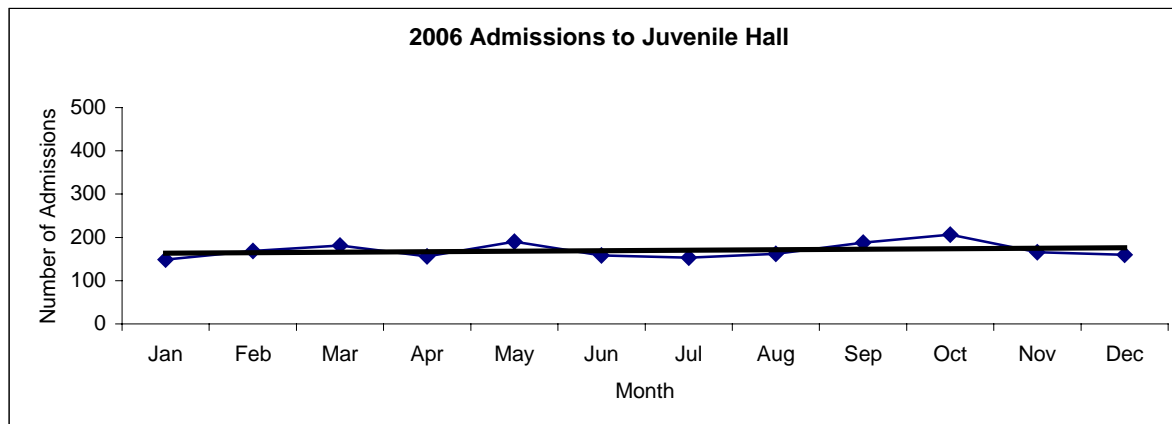
2004 Admissions	Jan	Feb	Mar	Apr	May	Jun	Jul	Aug	Sep	Oct	Nov	Dec	Total
	191	180	189	144	177	145	137	121	144	152	163	137	1880



2005 Admissions	Jan	Feb	Mar	Apr	May	Jun	Jul	Aug	Sep	Oct	Nov	Dec	Total
	167	144	169	170	167	168	158	152	136	148	139	120	1838

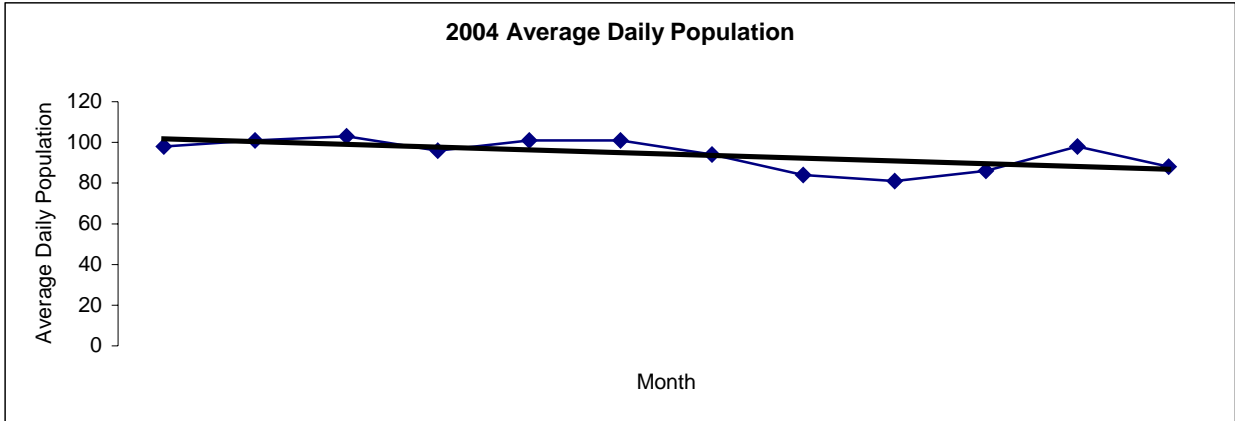


2006 Admissions	Jan	Feb	Mar	Apr	May	Jun	Jul	Aug	Sep	Oct	Nov	Dec	Total
	149	169	181	156	190	158	153	162	188	206	166	160	2038

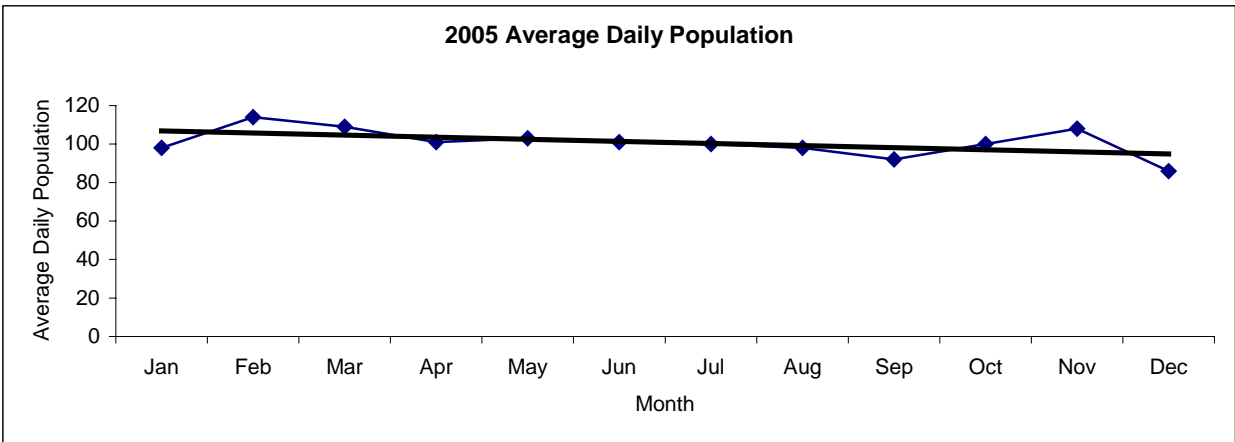


San Francisco Juvenile Probation
Juvenile Hall Average Daily Population By Month
 (2004-2006)

2004 Avg. Daily Pop.	Jan	Feb	Mar	Apr	May	Jun	Jul	Aug	Sep	Oct	Nov	Dec	Total
	98	101	103	96	101	101	94	84	81	86	98	88	94



2005 Avg. Daily Pop.	Jan	Feb	Mar	Apr	May	Jun	Jul	Aug	Sep	Oct	Nov	Dec	Total
	98	114	109	101	103	101	100	98	92	100	108	86	100



2006 Avg. Daily Pop.	Jan	Feb	Mar	Apr	May	Jun	Jul	Aug	Sep	Oct	Nov	Dec	Total
	81	90	100	99	111	112	107	104	104	128	122	119	106

