

City and County of San Francisco



Juvenile Probation Department

---

## **Monthly Report for December 2003**

Presented to the Juvenile Probation Commission

January 28<sup>th</sup>, 2003

# Table of Contents

---

## Section I Summary Reports

Juvenile Hall, Log Cabin Ranch Summary Statistics.....	1
Community Programs Summary Statistics .....	2
Probation Services Summary Statistics.....	4

## Section II Current Month General Detail

Probation Referrals, Juvenile Admissions And Average Daily Population .....	6
Juvenile Hall Admissions and Average Daily Population.....	7
Commitments to out-of-home placement.....	8
Commitments to California Youth Authority.....	9
Log Cabin Ranch Admissions and Average Daily Population.....	10
Probation Referrals .....	11
Juvenile Hall And Log Cabin Ranch Incident Report .....	12
Juvenile Hall And Log Cabin Ranch Grievances Report.....	13
Bay Area Resident Juvenile Hall Comparison .....	14
Juvenile Hall Admissions.....	15
Juvenile Hall Detainees by Detention Reason.....	16
Juvenile Hall Average Daily Population by Rated Capacity.....	17
Juvenile Hall Average Length of Stay .....	18

## Section III Demographics

Juvenile Hall Detainees by Sex and Race/Ethnic Origin.....	19
Juvenile Hall Detainees by Age .....	20
Juvenile Hall Detainees by Age and Sex.....	21
Juvenile Hall Detainees by Geographic Residence of Youth.....	22
Juvenile Hall Detainees by Race/Ethnic Origin and Sex.....	23

**Section IV**  
**Historical Information**

2000-2002 Probation Referrals .....24  
2000-2002 Juvenile Hall Admissions .....25  
2000-2002 Juvenile Hall Average Daily Population.....26  
2001-2002 Juvenile Hall Average Length of Stay by Month.....27  
2001-2002 Probation Referrals, Juvenile Hall Admissions and  
Average Daily Population .....28



# **Section I**

# **Summary Reports**

## Summary Report for the Month of December 2003

<b>Juvenile Hall</b>	<i>November 2002</i>	<i>November 2003</i>	<i>December 2002</i>	<i>December 2003</i>	<i>YTD 2002</i>	<i>YTD 2003</i>
Admissions	183	154	164	171	2159	2061
Average Daily Population	108	98	95	92	103	91
Average Length of Stay (Releases)	14.03	19.87	18.03	17.30	18.63	17.14
Average Length of Stay (In Custody)	49.85	43.04	58.85	53.96	44.15	47.78
Releases	180	150	186	185	2176	2062
<b>Log Cabin Ranch</b>						
Admissions:						
First Time Commitments	3	2	3	3	38	28
Recommitments	0	0	0	0	0	1
<i>Total</i>	<b>3</b>	<b>2</b>	<b>3</b>	<b>3</b>	<b>38</b>	<b>29</b>
Releases:						
Graduated	0	3	3	5	20	33
Escape	0	0	0	0	0	0
Other releases	0	0	0	1	10	11
<i>Total</i>	<b>0</b>	<b>3</b>	<b>3</b>	<b>6</b>	<b>30</b>	<b>44</b>
Average Daily Population	27	20	26	18	22	23
<b>Grievances Filed</b>						
Juvenile Hall:						
G1	0	*	0	*	8	4
B2	0	*	0	*	11	1
B3	1	*	0	*	6	0
B4	0	*	0	*	4	14
B5	0	*	0	*	3	5
G2 (CO-ED)	0	*	0	*	14	3
RU	2	*	0	*	0	0
<i>Total</i>	<b>3</b>	<b>*</b>	<b>0</b>	<b>*</b>	<b>46</b>	<b>27**</b>
Log Cabin Ranch	<b>8</b>	<b>0</b>	<b>0</b>	<b>0</b>	<b>8</b>	<b>0</b>
<b>Incident Reports</b>						
Juvenile Hall	18	21	14	10	220	164
Log Cabin Ranch	0	1	0	2	16	13
<i>Total</i>	<b>18</b>	<b>22</b>	<b>14</b>	<b>12</b>	<b>236</b>	<b>177</b>

\*Data not available

\*\* as of October 2003

## Summary Report for the Month of December 2003

<b>Community Programs</b>	<i>Program Vacancies by Agency on December 2003</i>	<i>Active in program November 2002</i>	<i>Active in Program November 2003</i>	<i>Active in Program December 2002</i>	<i>Active in Program December 2003</i>
<b>IHBS Monthly Client Count</b>					
BayView Hunters Point Foundation	12	17	16	16	16
Chinatown Youth Center	3	13	10	12	10
Morrisania West, Inc.	2	11	11	13	11
Office of Samoan Affairs	4	8	9	7	9
Potrero Hill Neighborhood House	6	11	7	11	7
Instituto Familiar de La Raza	12	19	22	25	22
Vietnamese Youth Development Center	6	9	7	9	7
Brothers Against Guns	0	0	16	0	16
<i>Total</i>	<b>45</b>	<b>88</b>	<b>98</b>	<b>93</b>	<b>98</b>
<i>December 2003 Percent Program Utilization</i>	<b>69%</b>				
<i>December 2003 Percent Change from last report</i>	<b>0%</b>				

Summary Report for TANF and Girls Programs  
Month: November 2003

PROGRAM	ANNUAL GOAL	NUMBER SERVED
California Community Dispute Services: Youth Accountability Boards	40	40
CARECEN: Tattoo Removal and Case Management	45	49
Center for Young Women's Development: Girls Services	40	76
Community Works – Girls Diversion Program	24	7
Community Works – Girls Therapeutic Arts Curriculum in Juvenile Hall	100	23
Community Works – ROOTS Support for Children of Incarcerated Parents	40	30
Edgewood Kinship Support Network	40	19
Family Restoration House: Life Skills	30	29
Girls 2000: Girls Services and Family Support Services	20	22
Instituto Familiar de la Raza – Case Management	10	6
Mission Neighborhood Center: Young Queens on the Rise – Girls Services	35	26
Performing Arts Workshop: Arts Education at Impact High School	30	25
SAGE: Girls Services	35	27
Samoan Community Development Center: Anger Management	75	76
Special Services for Groups – Occupational Therapy Training Program	50	50
United Way/Girls Justice Initiative: Detention-based Case Management & Inside Mentoring Program	300 72	103 52
Urban Services YMCA: Bayview Beacon Parenting Support	50	11
YGCIC Focus Vocational Programs	55	20
YGCIC GED Plus	50	14
YWCA – CITS Girls Mentorship	24	21
YWCA – FITS Girls Services	40	12

## Summary Report for the Month of December 2003

<b>Probation Services</b>	<i>November 2003</i>	<i>December 2003</i>	<i>Year To Date 2003</i>
Probation Referrals	200	239	3181
Petitions	67	79	1159
Selected Court Dispositions:			
California Youth Authority	0	4	14
Log Cabin Ranch	3	3	32
Out of Home Placement	11	11	148
Other Probation	20	29	358
Violation of Probation Petitions Filed	10	13	164
California Youth Authority Monthly Count			
Institutions:			
Males	44	45	
Females	5	5	
<b>Total</b>	<b>49</b>	<b>50</b>	
Parole:			
Males	27	25	
Females	2	2	
<b>Total</b>	<b>29</b>	<b>27</b>	



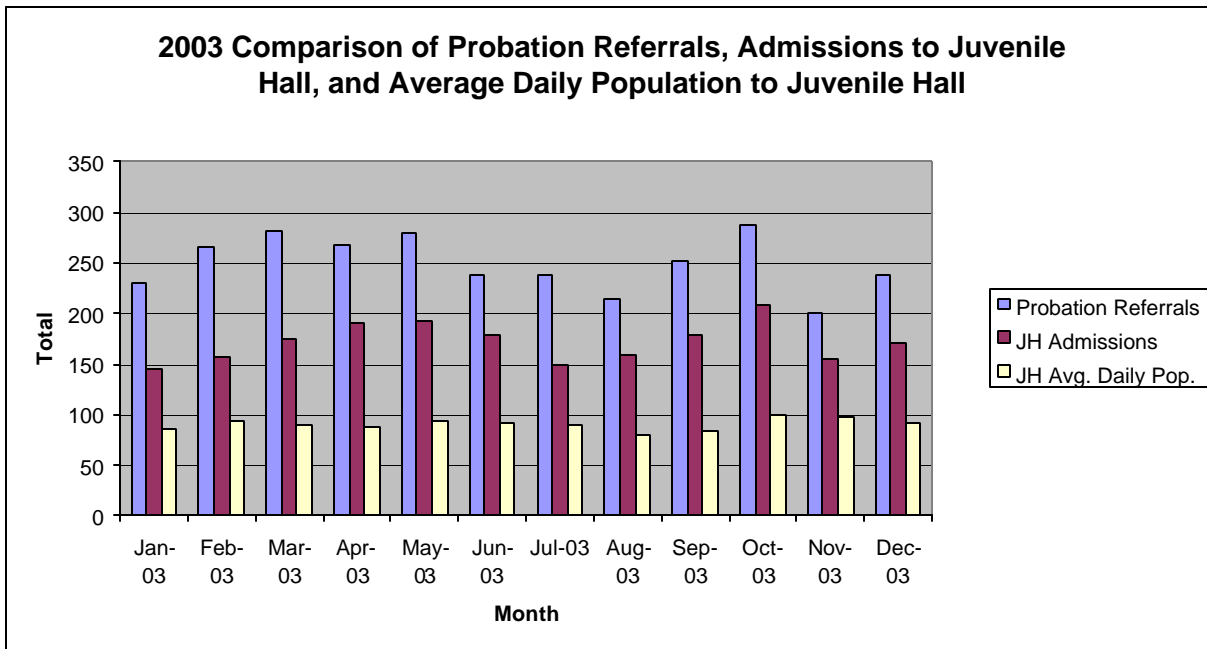
## Summary Report for the Month of December 2003

<b>Probation Services</b>			
<b>Caseload List</b>	November 2003	December 2003	December Average # Youth by PO
South Intake	214	215	43
North Intake	152	162	27
Prevention Diversion	179	180	20
Serious Offenders	102	110	18
Supervision	154	144	18
County Placement	31	29	29
Private Placement	184	177	16
Drug Court	31	31	31
Family Integrated Treatment Services	111	110	13
<i>Total</i>	<b>1158</b>	<b>1158</b>	<b>24</b>
<b>Special Services Unit</b>	New	Closed	Active at end of Month
Record Sealings	7	8	129
Stepparent Adoptions	1	2	56
Terminations	1	0	11
Marriage Consents	0	0	4
Custody Evaluations	0	0	0
	Entered	Completed	Active at end of Month
Community Service	9	6	1141
Street Law (next class starts 2/04)	0	0	0
		Referred	Completed at end of Month
COPS (next class starts 1/04)		0	0
Theft Awareness		15	12
Anger Management		18	8
Life Management Skills (no class )		0	0
Information, Record Checks, Research & Photo Copying Juvenile Records For:	November 2003	November 2003	Year to Date 2003
Job Corps, Probation Departments, Military, Law Enforcement,			
Misc., (letters, Memos, Forms, etc.)	139	123	1541

**Section II**  
**Current Month**  
**General Detail**

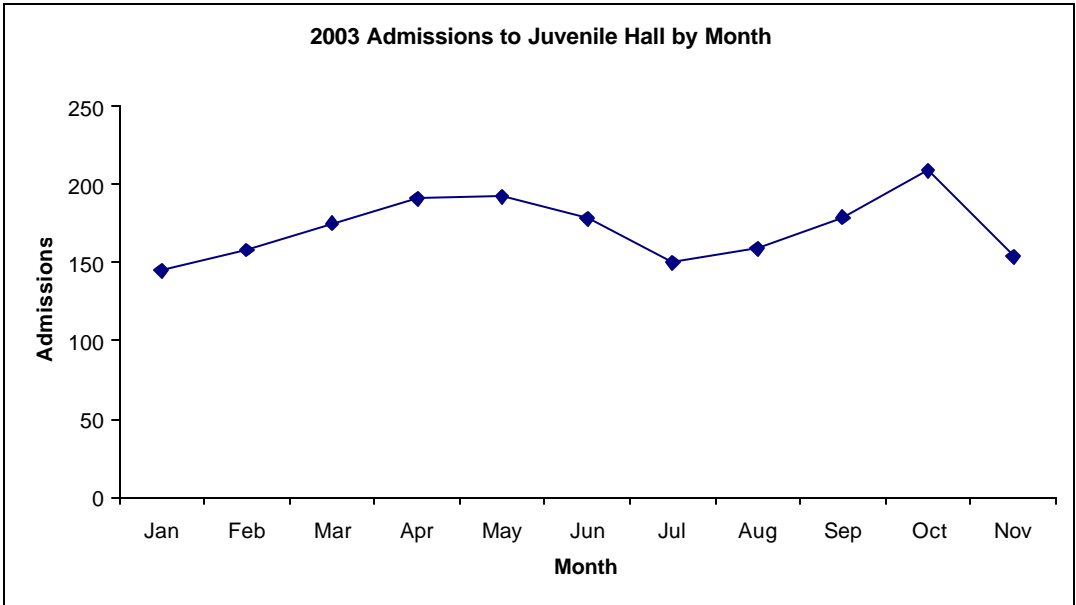
## San Francisco Juvenile Probation

	Jan-03	Feb-03	Mar-03	Apr-03	May-03	Jun-03	Jul-03	Aug-03	Sep-03	Oct-03	Nov-03	Dec-03
Probation Referrals	231	265	281	267	280	239	237	214	251	288	200	239
JH Admissions	145	158	175	191	192	178	150	159	179	209	154	171
JH Avg. Daily Pop.	86	93	90	88	94	92	89	80	84	100	98	92

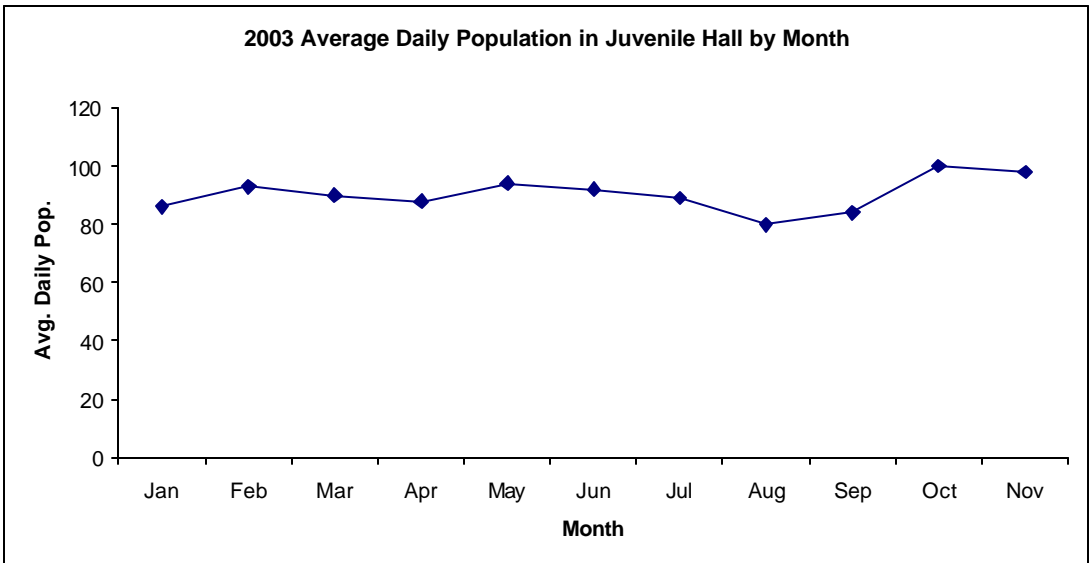


**San Francisco Juvenile Probation  
Admissions and Average Daily Population  
In Juvenile Hall  
(Calendar Year 2003)**

Admissions	Jan	Feb	Mar	Apr	May	Jun	Jul	Aug	Sep	Oct	Nov	Dec	Total
2003	145	158	175	191	192	178	150	159	179	209	154	171	<b>2061</b>



Avg. Daily Pop.	Jan	Feb	Mar	Apr	May	Jun	Jul	Aug	Sep	Oct	Nov	Dec	Total
2003	86	93	90	88	94	92	89	80	84	100	98	92	<b>91</b>

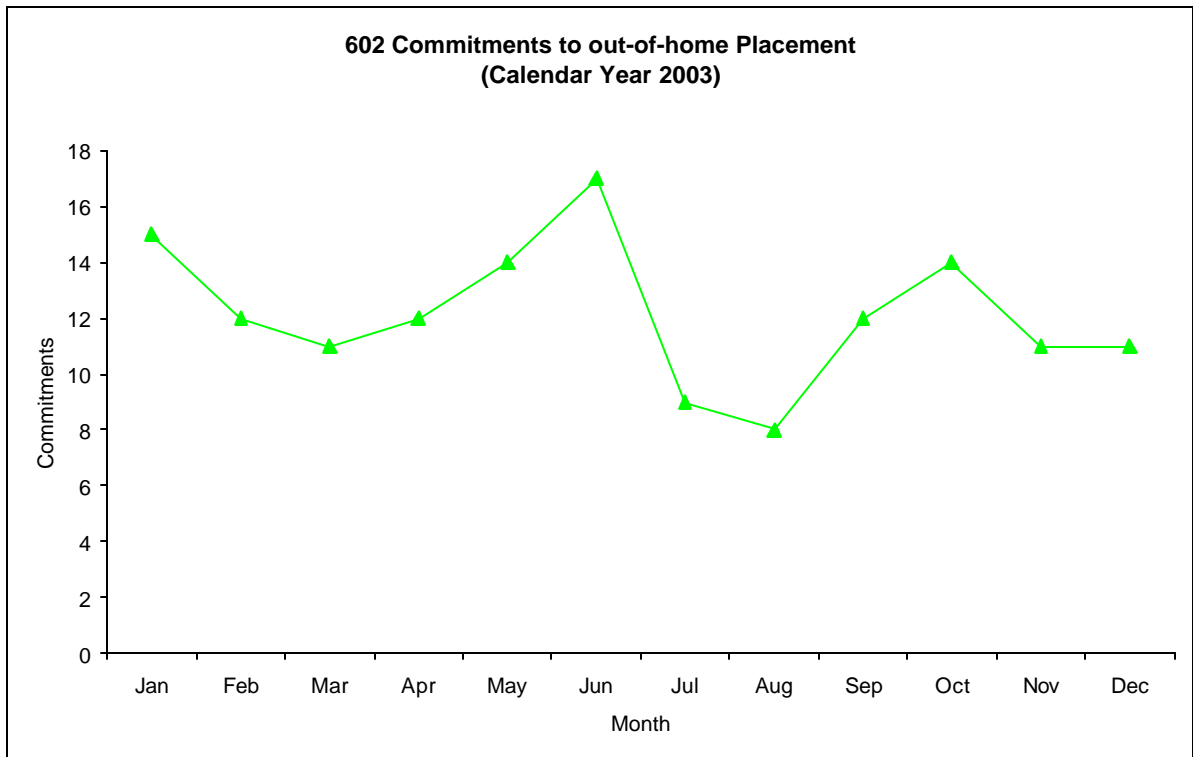


# Out-of-Home Placement<sup>1</sup>

## Commitments of 602's

### Calendar Year 2003

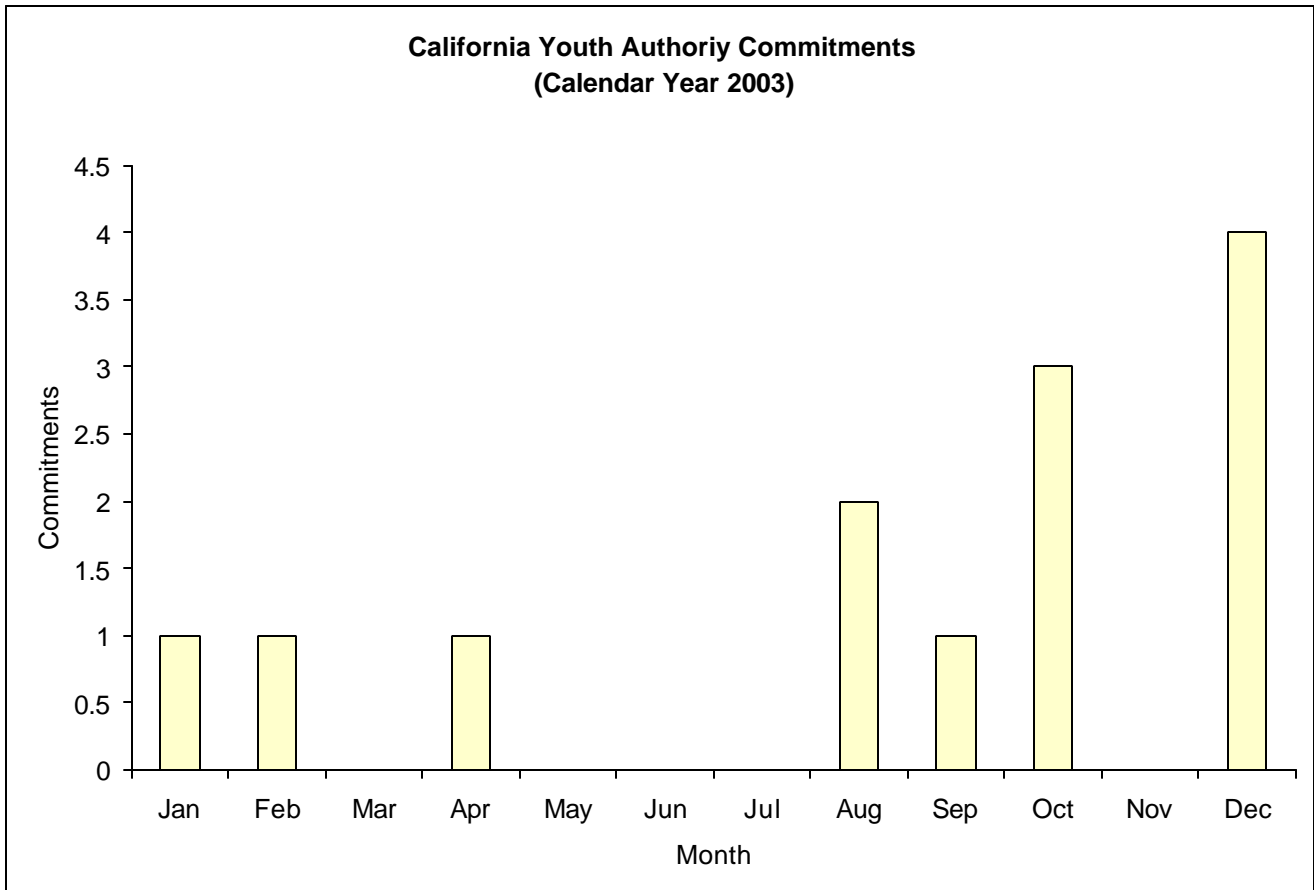
Commitments	Jan	Feb	Mar	Apr	May	Jun	Jul	Aug	Sep	Oct	Nov	Dec	Total
2003	15	12	11	12	14	17	9	8	12	14	11	11	146



<sup>1</sup> This report is based on 602 Commitments to out-of-home placements. If there is a 601 commitment, it will show as a footnote here. Figures are regularly updated to include reports from previous reporting periods.

# California Youth Authority Commitments (Calendar Year 2003)

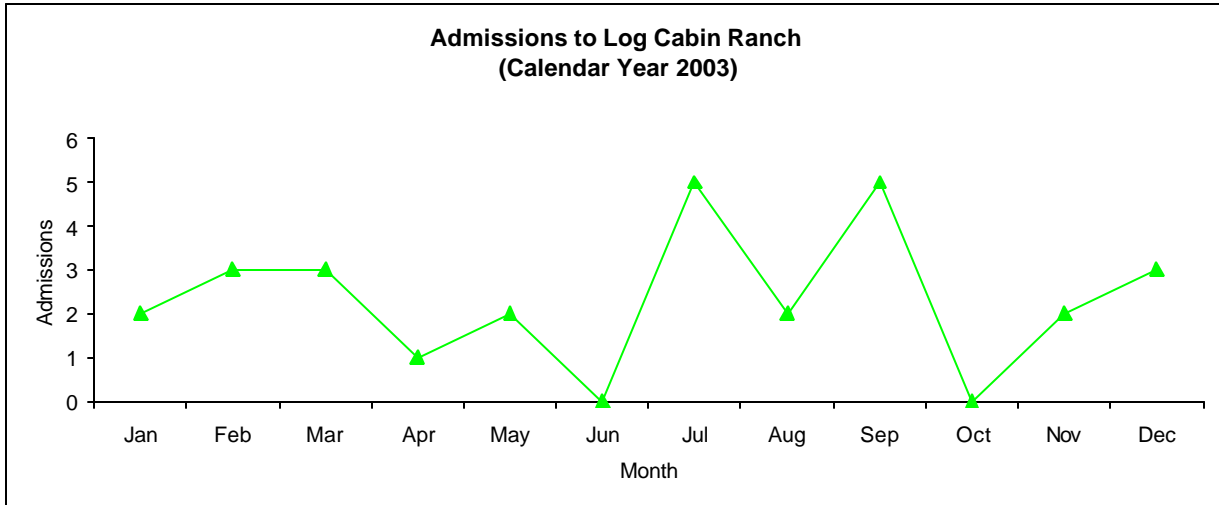
Commitments	Jan	Feb	Mar	Apr	May	Jun	Jul	Aug	Sep	Oct	Nov	Dec	Total
2003	1	1	0	1	0	0	0	2	1	3	0	4	13



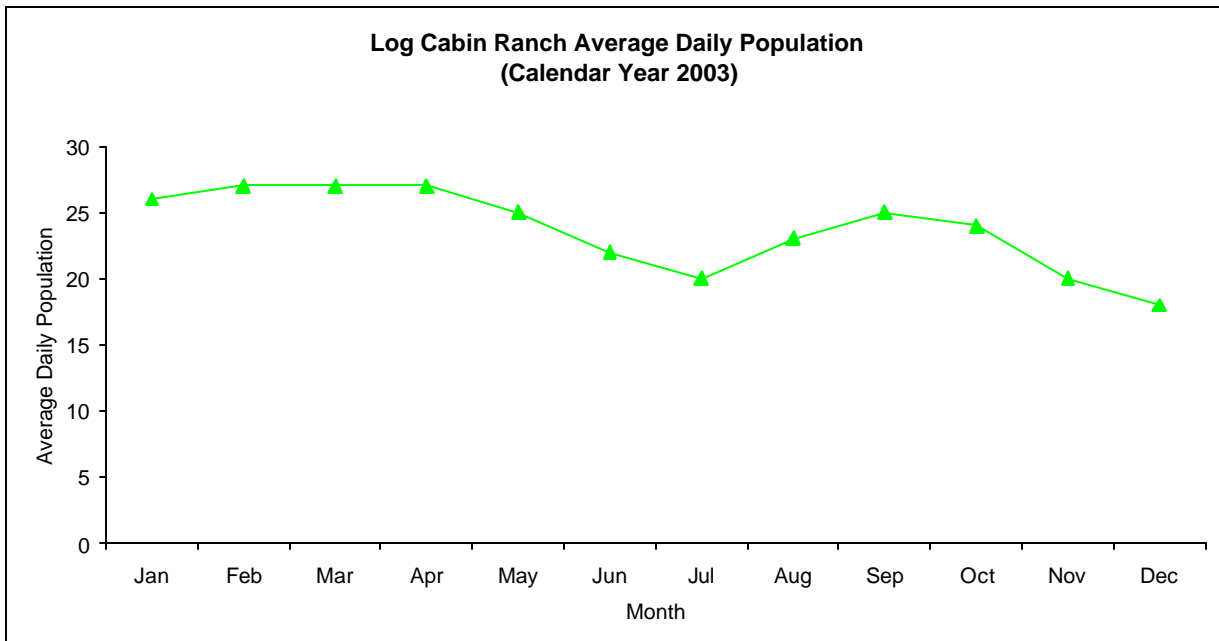
# Log Cabin Ranch

## Admissions and Average Daily Population (Calendar Year 2003)

<b>Admissions</b>	Jan	Feb	Mar	Apr	May	Jun	Jul	Aug	Sep	Oct	Nov	Dec	<b>Total</b>
2003	2	3	3	1	2	0	5	2	5	0	2	3	<b>28</b>



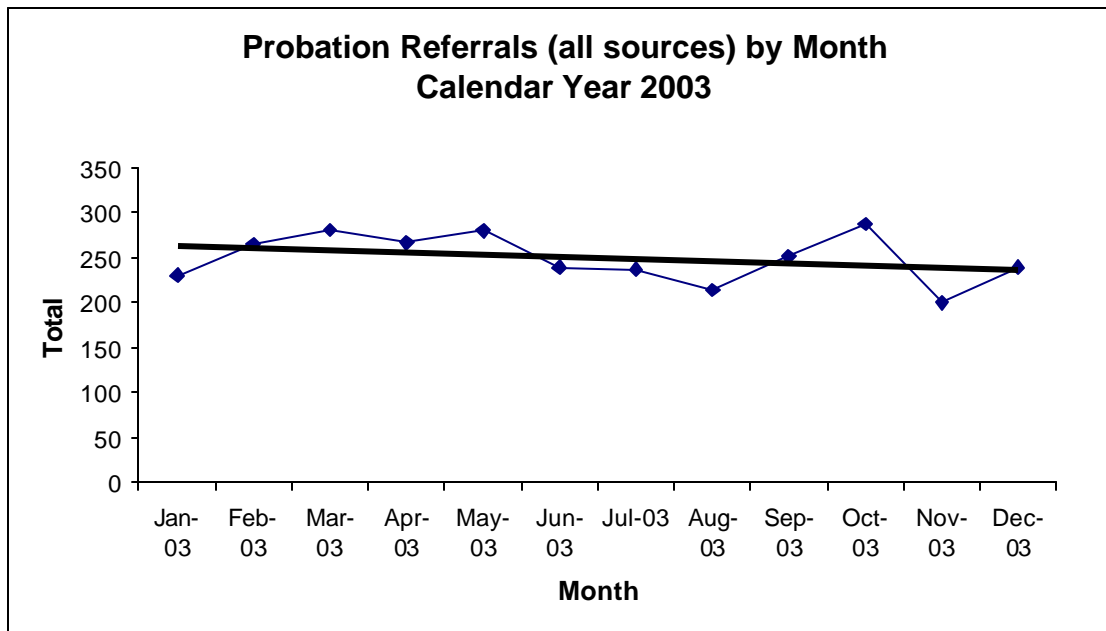
<b>Avg. Daily Pop.</b>	Jan	Feb	Mar	Apr	May	Jun	Jul	Aug	Sep	Oct	Nov	Dec	<b>Total</b>
2003	26	27	27	27	25	22	20	23	25	24	20	18	<b>23.67</b>



## Probation Referrals by Month Calendar Year 2003

### Probation Referrals (all sources) by Month (602 W&I)

Jan-03	231
Feb-03	265
Mar-03	281
Apr-03	267
May-03	280
Jun-03	239
Jul-03	237
Aug-03	214
Sep-03	251
Oct-03	288
Nov-03	200
Dec-03	239





SAN FRANCISCO JUVENILE PROBATION DEPARTMENT  
MONTHLY INCIDENT REPORT FORM  
MONTH/YEAR: DECEMBER 2003

<b>Log Cabin Ranch</b>	Battery on Staff	Injury to Staff due to Restraint of Minor	Fight	Battery Youth on Youth	Attempted Escape	AWOL	Attempted Suicide	Serious Contraband (Weapon Illegal Drug)
	<b>0</b>	<b>0</b>	<b>0</b>	<b>0</b>	<b>0</b>	<b>0</b>	<b>0</b>	<b>0</b>
	Battery on Staff with Injury	Fire	Fight with Injury	Battery Youth on Youth with Injury	Escape	Death	Suicide	Major Property Destruction
<b>0</b>	<b>2</b>	<b>0</b>	<b>0</b>	<b>0</b>	<b>0</b>	<b>0</b>	<b>0</b>	<b>0</b>
<b>Juvenile Hall</b>	Battery on Staff	Injury to Staff due to Restraint of Minor	Fight	Battery Youth on Youth	Attempted Escape	AWOL	Attempted Suicide	Serious Contraband (Weapon Illegal Drug)
	<b>1</b>	<b>0</b>	<b>5</b>	<b>0</b>	<b>0</b>	<b>0</b>	<b>1</b>	<b>0</b>
	Battery on Staff with Injury	Fire	Fight with Injury	Battery Youth on Youth with Injury	Escape	Death	Suicide	Major Property Destruction
<b>0</b>	<b>0</b>	<b>0</b>	<b>1</b>	<b>0</b>	<b>0</b>	<b>0</b>	<b>0</b>	<b>2</b>

## Grievances Filed December 2003

### San Francisco Juvenile Probation Department

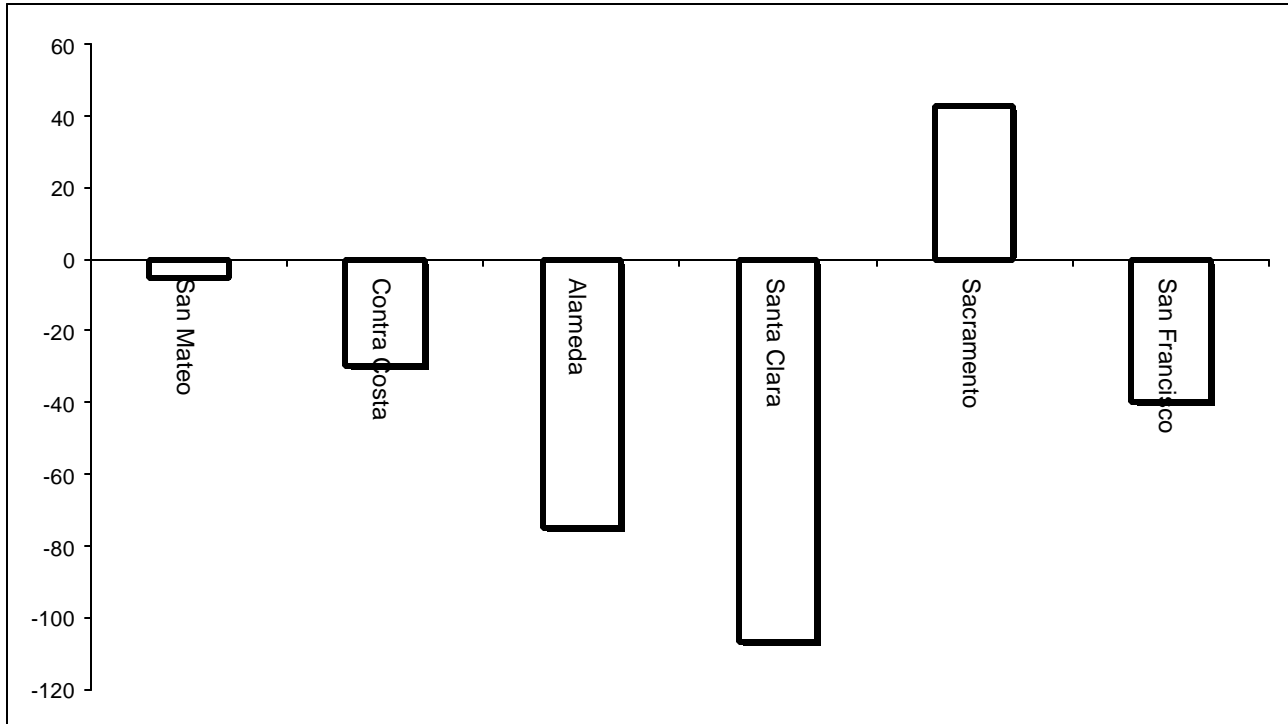
#### Juvenile Hall

**Note:** The IT unit did not receive any report from the Ombudsman for the month of December 2003.

#### Log Cabin Ranch

Type	Log Cabin Ranch
Food/Snacks	0
Laundry	0
Personal Property	0
Phone Calls	0
Procedures	0
Head Call	0
Discipline	0
Complaints vs. Staff	0
Cottage Change	0
Medical	0
School	0
Probation	0
Miscellaneous	0
<b>Total</b>	<b>0</b>

Bay Area Resident Juvenile Hall Comparison  
Over/Under Capacity  
on January 5th, 2004

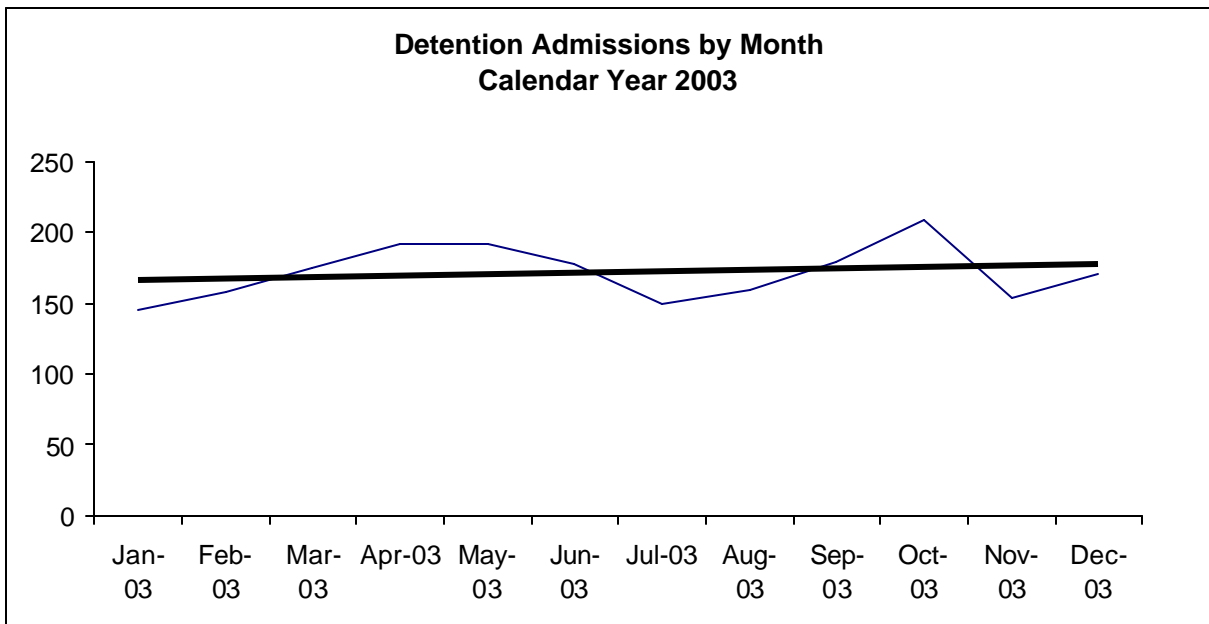


	Rated Capacity	Actual	Over/Under Capacity
San Mateo	130	125	-5
Contra Costa	160	130	-30
Alameda	288	213	-75
Santa Clara	329	222	-107
Sacramento	256	299	43
San Francisco	132	92	-40

# Juvenile Hall Admissions by Month Calendar Year 2003

## Detention Admissions by Month

Jan-03	145
Feb-03	158
Mar-03	175
Apr-03	191
May-03	192
Jun-03	178
Jul-03	150
Aug-03	159
Sep-03	179
Oct-03	209
Nov-03	154
Dec-03	171

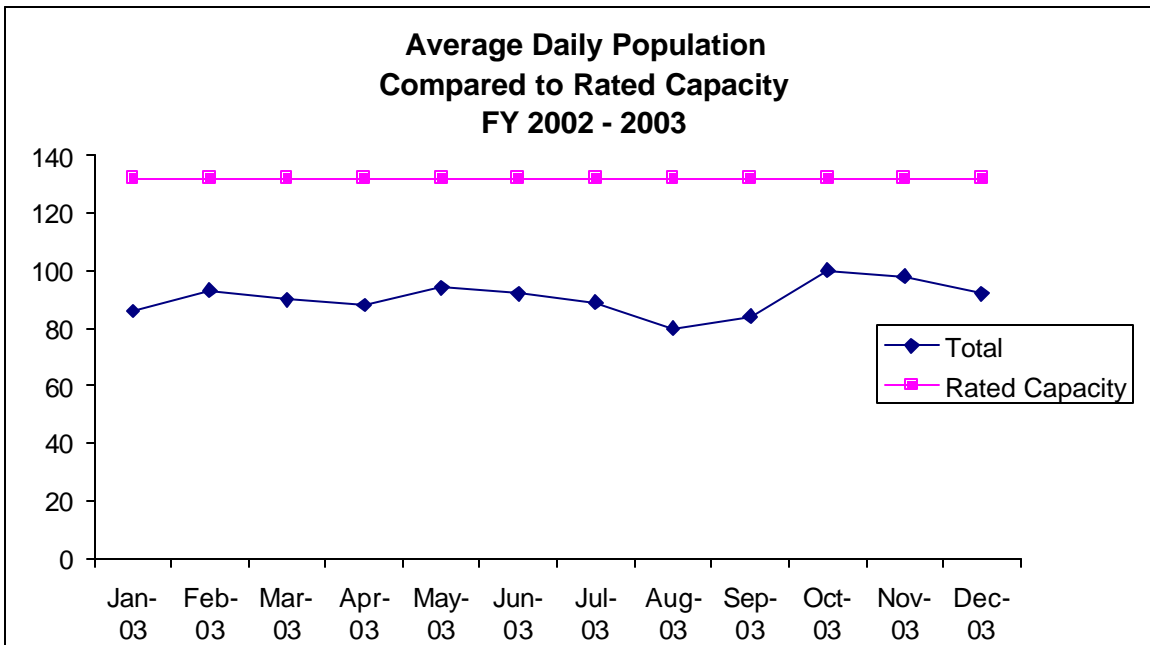


Characteristics of Juvenile Hall Detainees on December 31<sup>st</sup>, 2003  
Using CJIS Code from the California Department of Justice

Detention Reason	Offense Code	Count	%
ACCESSORY	32 PC	1	1.20%
AGGRAVATED MAYHEM	205 PC	1	1.20%
ASSAULT:DEADLY WEAPON OR FORCE:POSSIBLE GREAT BODILY INJ	245 (A) PC	2	2.41%
ATTEMPTED MURDER	664 /187 (A) PC	6	7.23%
BATTERY ON PEACE OFFICER/EMERGENCY PERSONNEL/ETC W/INJURY	242 /243 PC	2	2.41%
BURGLARY	459 PC	4	4.82%
CARJACKING	215 PC	2	2.41%
CHANGE OF PLACEMENT/PLACEMENT FAILURE	737 WI	8	9.64%
COURT ORDER 602	CTORD 602 XX	9	10.84%
DISORDERLY CONDUCT:PROSTITUTION	647 (B) PC	1	1.20%
FAIL TO OBEY ORDER OF JUVENILE COURT 602 WI	777 (A)(2) WI	10	12.05%
FORCE OR ADW NOT FIREARM:GBI LIKELY	245 (A)(1) PC	4	4.82%
INFLECT CORPORAL INJURY ON SPOUSE/COHABITANT	273.5 PC	2	2.41%
MURDER	187 (A) PC	4	4.82%
OBSTRUCT/RESIST/ETC PUBLIC/PEACE OFFICER/EMERGENCY MED TECH	148 (A)(1) PC	1	1.20%
POSSESS MARIJUANA FOR SALE	11359 HS	1	1.20%
POSSESS NARCOTIC CONTROLLED SUBSTANCE	11350 (A) HS	4	4.82%
POSSESS/PURCHASE COCAINE BASE FOR SALE	11351.5 HS	1	1.20%
ROBBERY	211 PC	1	1.20%
ROBBERY:SECOND DEGREE	212.5(C) PC	5	6.02%
SEXUAL PENETRATION WITH FORCE/ETC	289 (A)(1) PC	2	2.41%
TRANSPORT/SELL NARCOTIC/CONTROLLED SUBSTANCE	11352 (A) HS	2	2.41%
VIOLATION(S) OF HOME SUPERVISION CONDITION	628.1 WI	5	6.02%
WARRANT 602	WRNT602 XX	5	6.02%
	<b>Total</b>	<b>83</b>	<b>100.00%</b>

**Average Daily Population  
By Rated Capacity  
Calendar Year 2003**

	<b>Total</b>	<b>Rated Capacity</b>
<b>Jan-03</b>	86	132
<b>Feb-03</b>	93	132
<b>Mar-03</b>	90	132
<b>Apr-03</b>	88	132
<b>May-03</b>	94	132
<b>Jun-03</b>	92	132
<b>Jul-03</b>	89	132
<b>Aug-03</b>	80	132
<b>Sep-03</b>	84	132
<b>Oct-03</b>	100	132
<b>Nov-03</b>	98	132
<b>Dec-03</b>	92	132



## Juvenile Hall Average Length of Stay

For the Month of December 2003

### <sup>1</sup>Released

<b>Range of Days</b>	<i>1-10 days</i>	<i>11-20 days</i>	<i>21-30 days</i>	<i>30 or more days</i>	<b>Total</b>
# of Youth Released	129	16	14	26	185
% of Population	71.30%	8.70%	3.80%	16.30%	100%
# of Days	452	248	358	2142	3200
% of Total Days	14.13%	7.75%	11.19%	66.94%	100%
Average Length of Stay	3.50	15.50	25.57	82.38	17.30

### <sup>2</sup>In Custody

<b>Range of Days</b>	<i>1-10 days</i>	<i>11-20 days</i>	<i>21-30 days</i>	<i>30 or more days</i>	<b>Total</b>
# of Youth Detained	22	12	8	41	83
% of Population	38.60%	18.10%	12.60%	30.70%	100%
# of Days	121	185	199	3974	4479
% of Total Days	2.70%	4.13%	4.44%	88.73%	100%
Average Length of Stay	5.50	15.42	24.88	96.93	53.96

Notes: Less than one day of stay is calculated as one day.

<sup>1</sup>Length of stay is calculated according to release date for those who are released.

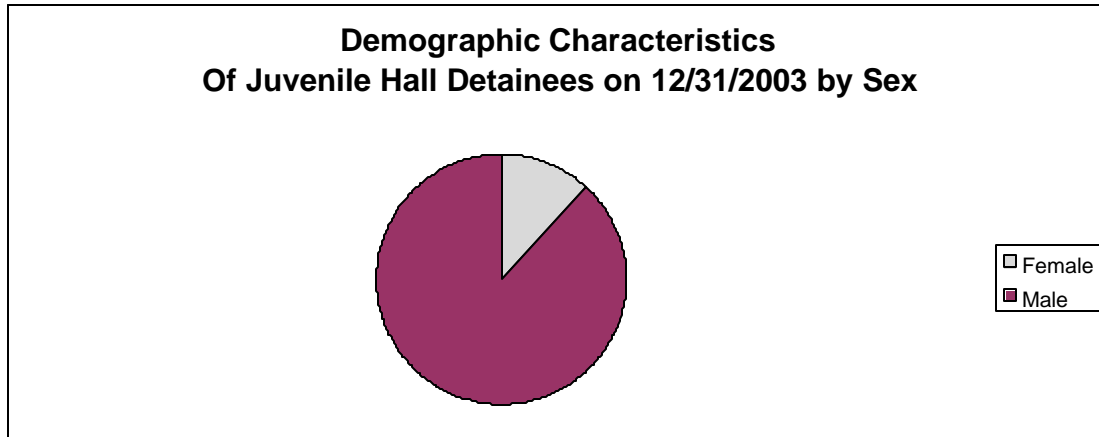
<sup>2</sup>For those still in custody, length of stay is calculated at the last day of the month.

# **Section III**

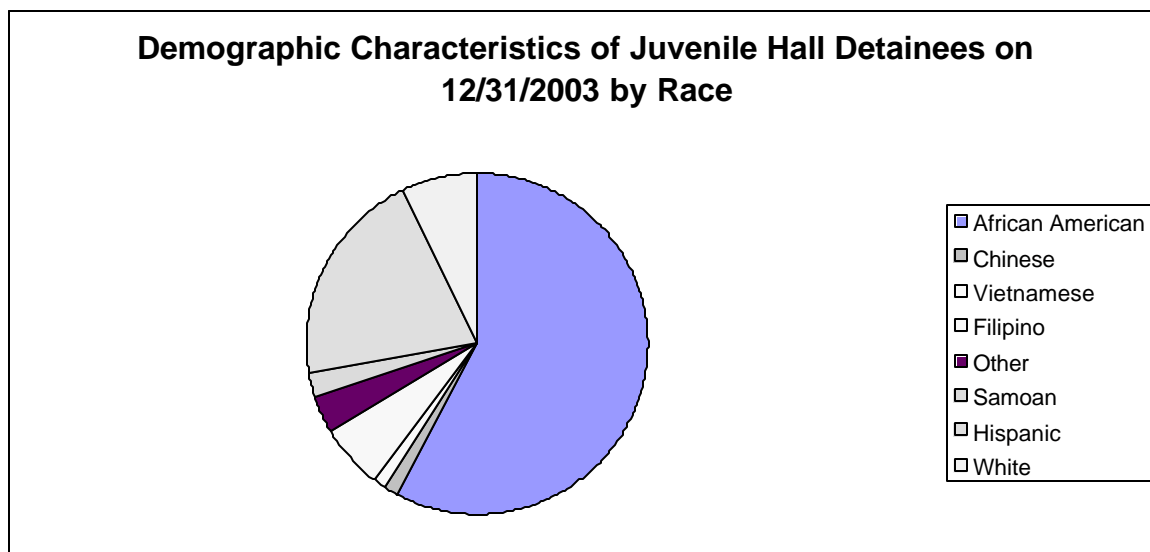
## **Demographics**



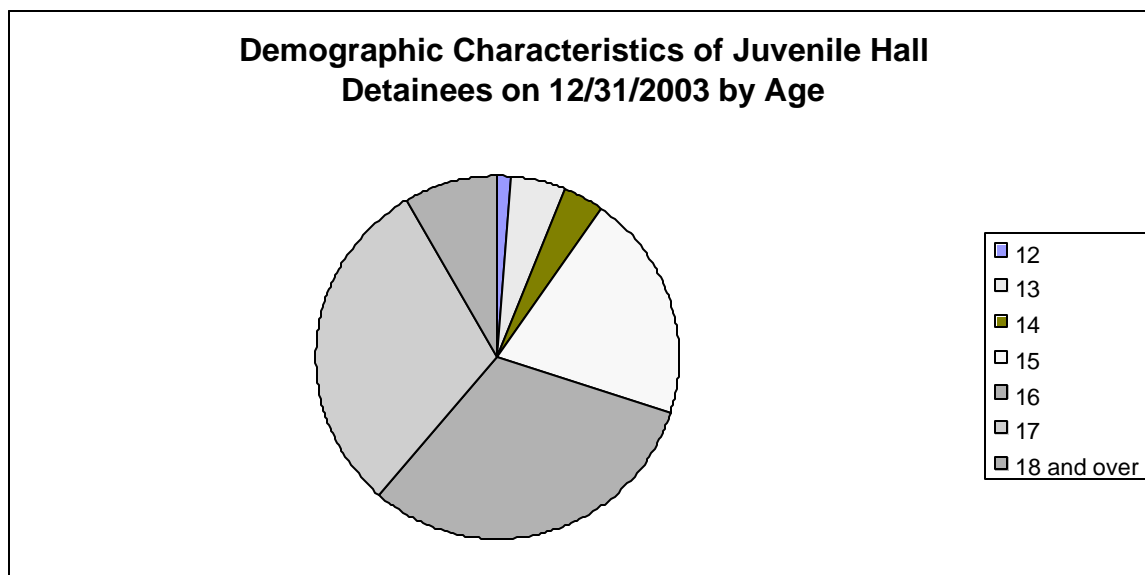
Sex	Frequency	Percent
Female	10	12.05%
Male	73	87.95%
<b>Total</b>	<b>83</b>	<b>100.00%</b>



Race/Ethnic Origin	Frequency	Percent
African American	48	57.83%
Chinese	1	1.20%
Vietnamese	1	1.20%
Filipino	5	6.02%
Other	3	3.61%
Samoan	2	2.41%
Hispanic	17	20.48%
White	6	7.23%
<b>Total</b>	<b>83</b>	<b>100.00%</b>

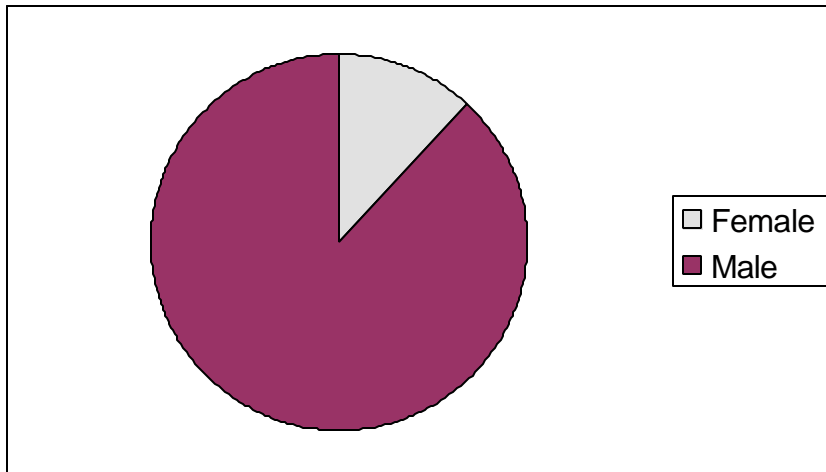


Age	Frequency	Percent
12	1	1.20%
13	4	4.82%
14	3	3.61%
15	17	20.48%
16	26	31.33%
17	25	30.12%
18 and over	7	8.43%
<b>Total</b>	<b>83</b>	<b>100.00%</b>



Demographic Characteristics of Juvenile Hall Detainees  
on 12/31/2003  
Age by Sex

Age	Female	Male	Total	
12	0	1	1	1.20%
13	0	4	4	4.82%
14	1	2	3	3.61%
15	2	15	17	20.48%
16	2	24	26	31.33%
17	4	21	25	30.12%
18 and over	1	6	7	8.43%
<b>Total</b>	<b>10</b>	<b>73</b>	<b>83</b>	<b>100.00%</b>
	<b>12.05%</b>	<b>87.95%</b>	<b>100.00%</b>	



Demographic Characteristics  
Of Juvenile Hall Detainees on December 31<sup>st</sup>, 2003

---

**Geographical Residence of Youth**

	Frequency	Percent
Bayview	13	15.66%
Haight Ashbury/Castro/Upper Market	1	1.20%
Ingleside (West Twin Peaks)	4	4.82%
Inner Mission	6	7.23%
Marina	0	0.00%
North of Market/Downtown	0	0.00%
Outer Mission	20	24.10%
Parkside	1	1.20%
Potrero	4	4.82%
Richmond	3	3.61%
South of Market/Tenderloin	4	4.82%
Sunset	3	3.61%
Treasure Island/Yerba Buena	2	2.41%
Western Addition	7	8.43%
<sup>1</sup> Non-San Francisco and Unknown	15	18.07%
<b>Total</b>	<b>83</b>	<b>100.00%</b>

**<sup>1</sup>Non-San Francisco and Unknown**

	Frequency	Percent
Campbell	1	1.20%
Clearlake Oaks	1	1.20%
Daly City	2	2.41%
Lakeport	1	1.20%
Orangevale	2	2.41%
Sacramento	1	1.20%
San Andreas	1	1.20%
San Mateo	1	1.20%
Unknown	4	4.82%
Vallejo	1	1.20%
<b>Total</b>	<b>15</b>	<b>18.07%</b>

Demographic Characteristics  
Of Juvenile Hall Detainees on December 31<sup>st</sup>, 2003

---

**Race/Ethnic Groups by Gender**

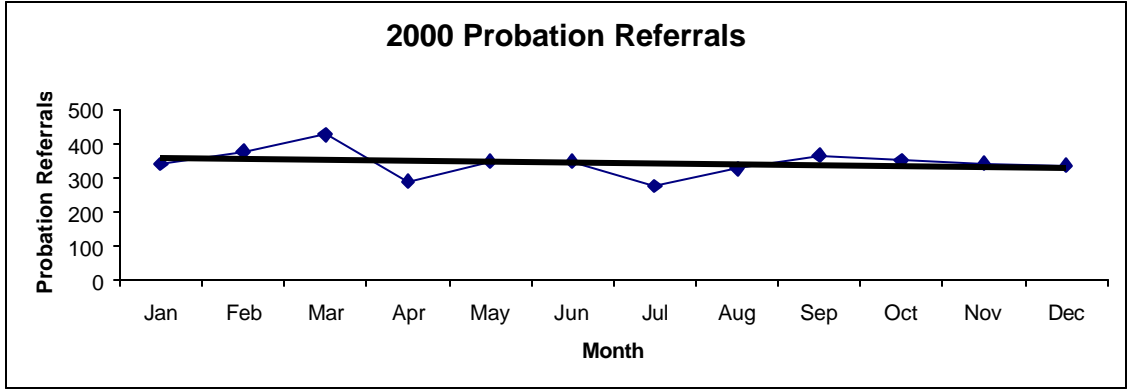
	Female	Male	Total	Percent
African American	4	44	48	57.83%
Chinese	1	0	1	1.20%
Filipino	1	4	5	6.02%
Latin American	2	15	17	20.48%
Other	1	2	3	3.61%
Samoan	0	2	2	2.41%
Vietnamese	0	1	1	1.20%
White	1	5	6	7.23%
TOTAL	10	73	83	100.00%

# **Section IV**

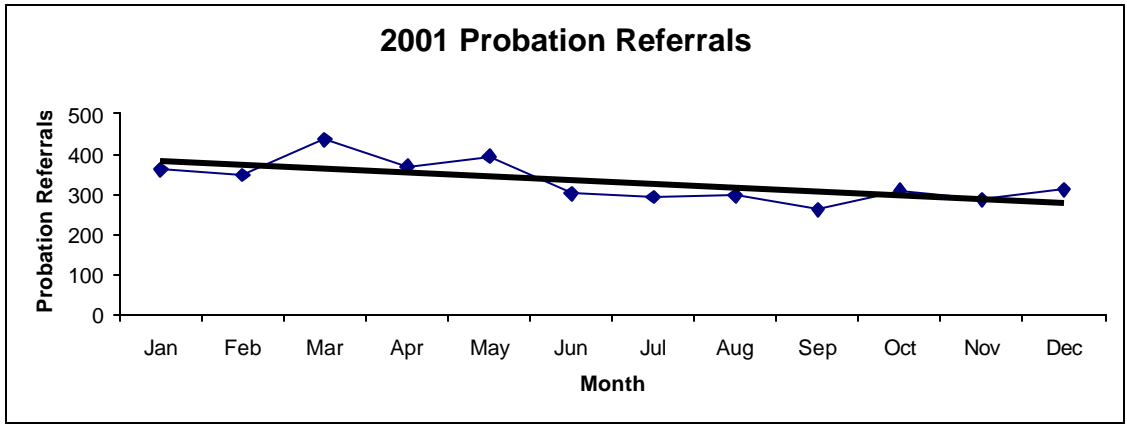
## **Historical Information**

San Francisco Juvenile Probation  
**Probation Referrals (all sources) By Month**  
 (2000-2003)

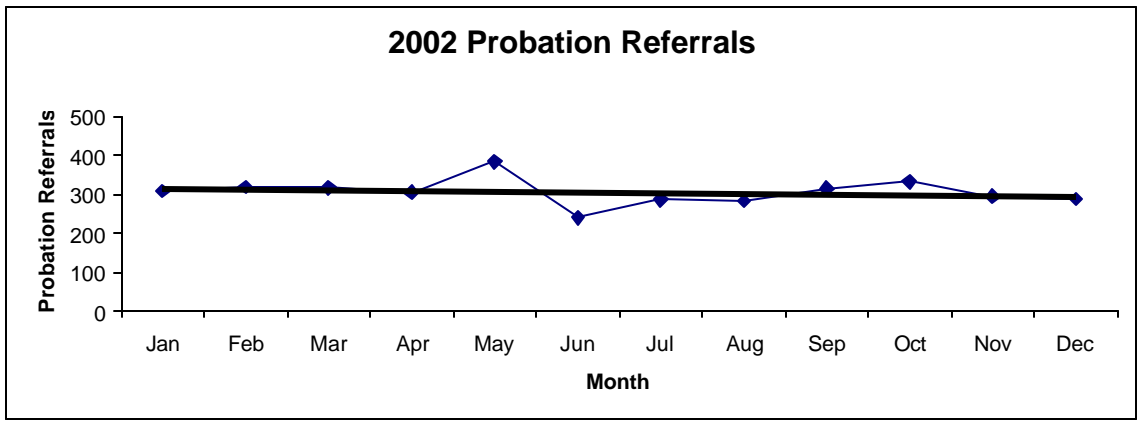
2000 Probation Referrals	Jan	Feb	Mar	Apr	May	Jun	Jul	Aug	Sep	Oct	Nov	Dec	Total
	341	378	427	291	350	349	277	328	367	351	342	338	<b>4139</b>



2001 Probation Referrals	Jan	Feb	Mar	Apr	May	Jun	Jul	Aug	Sep	Oct	Nov	Dec	Total
	361	348	437	370	394	301	292	296	262	309	287	311	<b>3968</b>

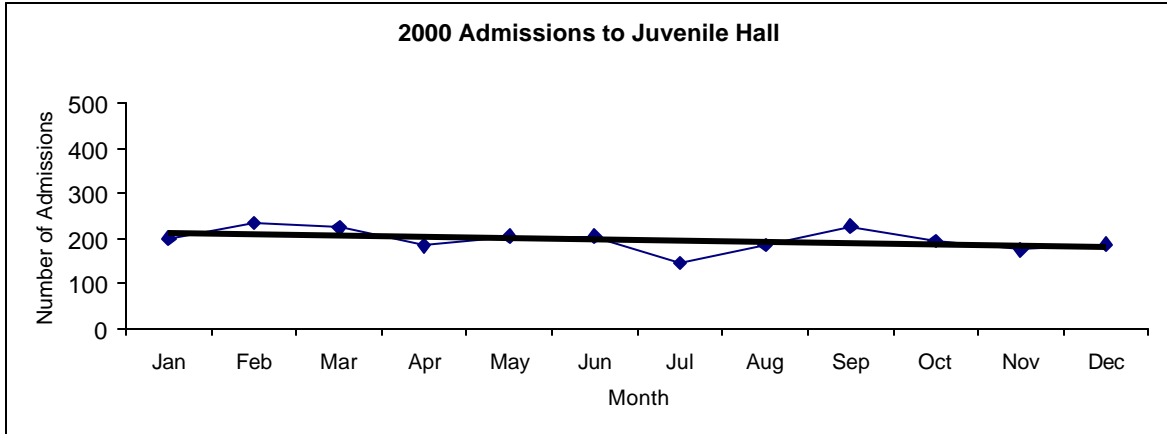


2002 Probation Referrals	Jan	Feb	Mar	Apr	May	Jun	Jul	Aug	Sep	Oct	Nov	Dec	Total
	308	320	318	305	384	240	286	283	315	333	294	289	<b>3675</b>

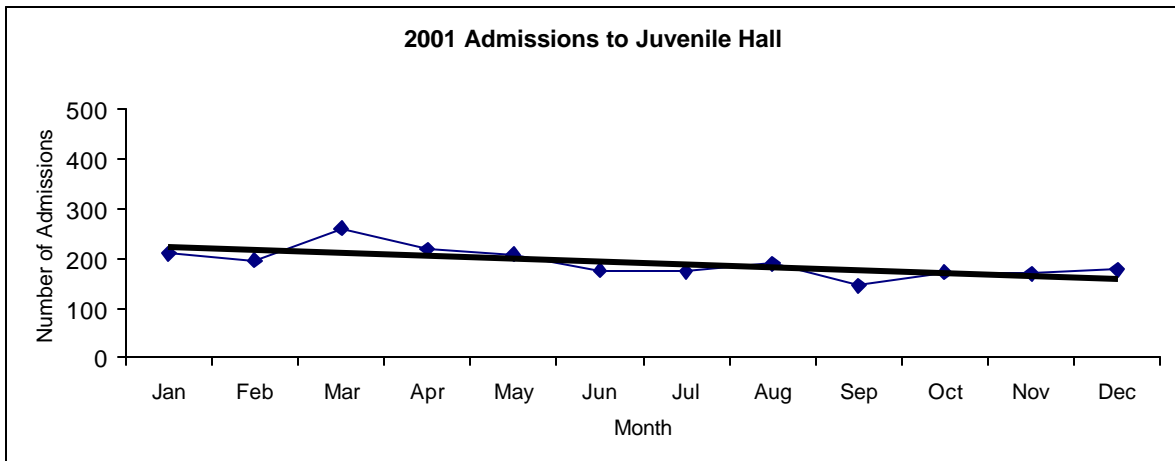


**San Francisco Juvenile Probation  
Juvenile Hall Admissions By Month  
(2000-2002)**

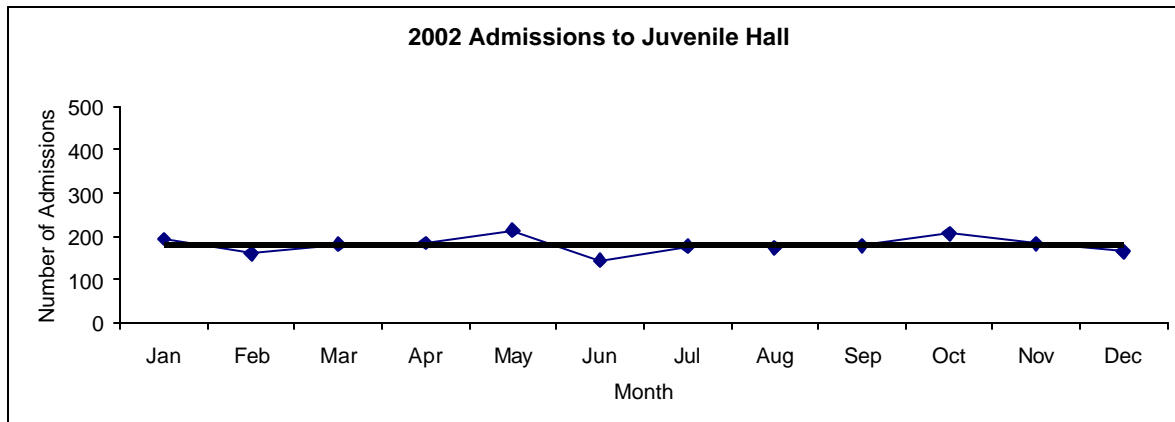
2000 Admissions	Jan	Feb	Mar	Apr	May	Jun	Jul	Aug	Sep	Oct	Nov	Dec	Total
	201	234	225	184	205	205	146	185	227	194	176	187	<b>2369</b>



2001 Admissions	Jan	Feb	Mar	Apr	May	Jun	Jul	Aug	Sep	Oct	Nov	Dec	Total
	210	197	260	220	209	176	174	190	145	173	170	178	<b>2302</b>



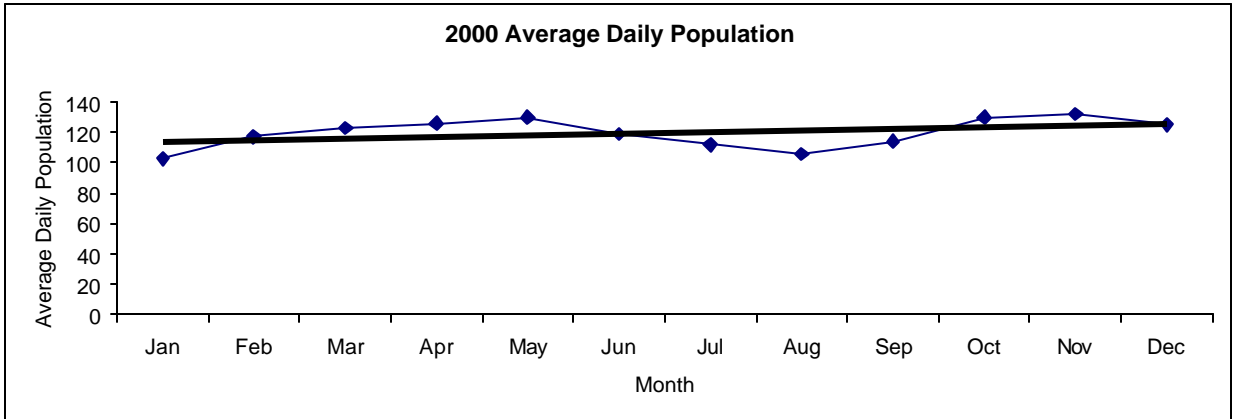
2002 Admissions	Jan	Feb	Mar	Apr	May	Jun	Jul	Aug	Sep	Oct	Nov	Dec	Total
	193	160	181	185	213	145	177	173	179	206	183	164	<b>2159</b>



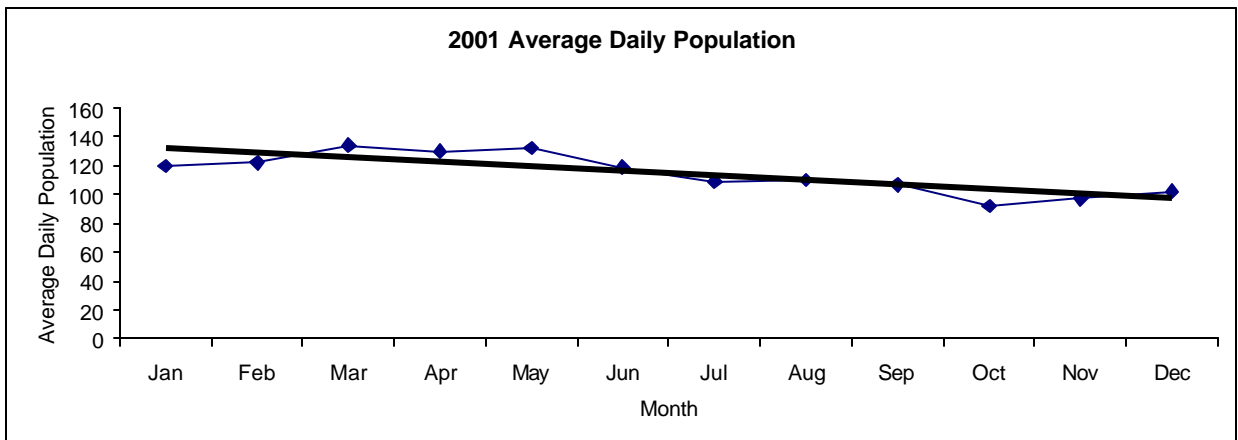


**San Francisco Juvenile Probation  
Juvenile Hall Average Daily Population By Month  
(2000-2002)**

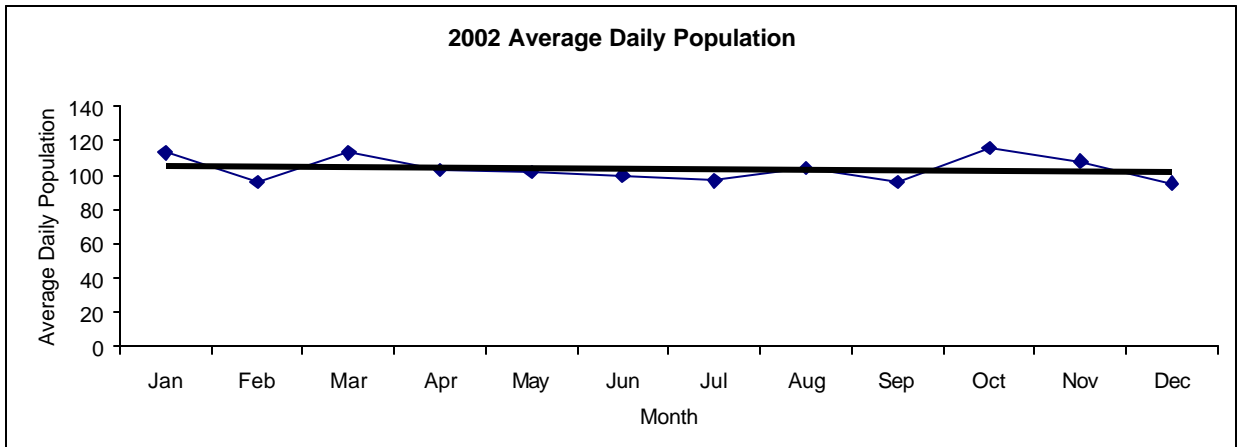
2000 Avg. Daily Pop.	Jan	Feb	Mar	Apr	May	Jun	Jul	Aug	Sep	Oct	Nov	Dec	Total
	103	117	123	126	130	119	112	106	114	130	132	125	120



2001 Avg. Daily Pop.	Jan	Feb	Mar	Apr	May	Jun	Jul	Aug	Sep	Oct	Nov	Dec	Total
	120	122	134	130	132	119	109	110	107	92	97	102	115

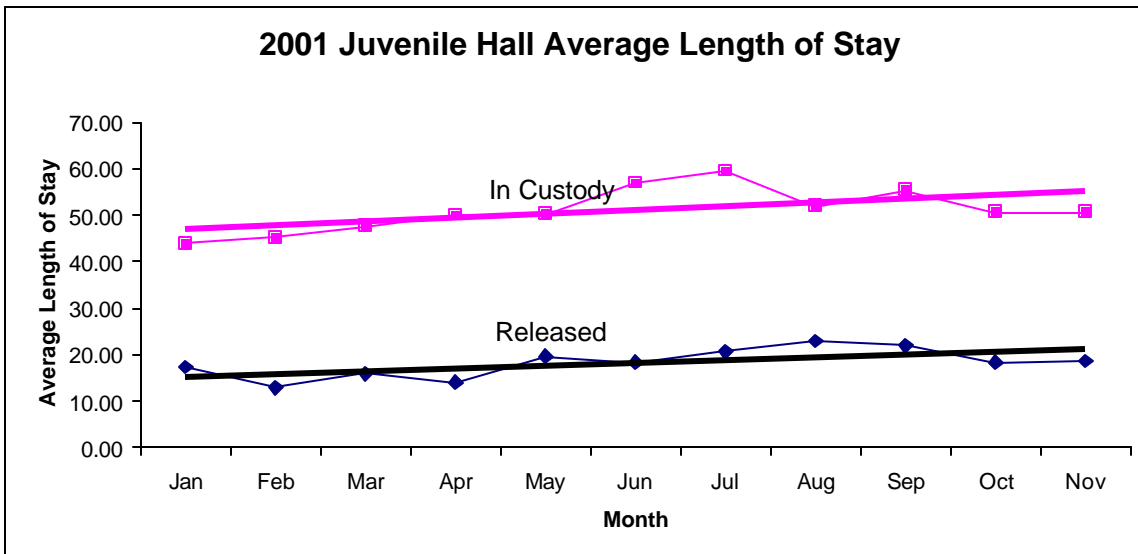


2002 Avg. Daily Pop.	Jan	Feb	Mar	Apr	May	Jun	Jul	Aug	Sep	Oct	Nov	Dec	Total
	113	96	113	103	102	100	97	104	96	116	108	95	104

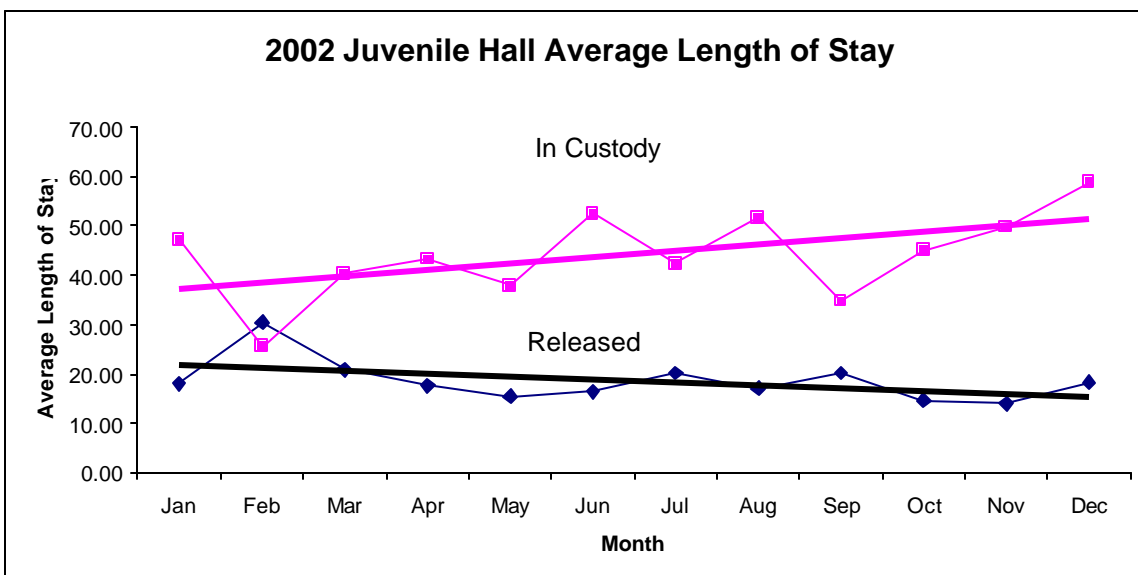


San Francisco Juvenile Probation  
**Juvenile Hall Average Length of Stay By Month**  
 (2001-2002)

2001 Avg. Length of Stay	Jan	Feb	Mar	Apr	May	Jun	Jul	Aug	Sep	Oct	Nov	Dec	Total
<sup>1</sup> Released	17.44	13.03	15.87	14.05	19.66	18.37	20.73	22.97	21.94	18.33	18.71	20.12	<b>18.44</b>
<sup>2</sup> In Custody	44.00	45.18	47.66	50.13	50.18	56.93	59.56	51.97	55.41	50.67	50.61	42.32	<b>50.39</b>



2002 Avg. Length of Stay	Jan	Feb	Mar	Apr	May	Jun	Jul	Aug	Sep	Oct	Nov	Dec	Total
<sup>1</sup> Released	18.05	30.44	20.88	17.65	15.50	16.45	20.22	17.15	20.16	14.67	14.03	18.30	<b>18.63</b>
<sup>2</sup> In Custody	47.30	25.63	40.35	43.29	37.86	52.57	42.41	51.77	34.82	45.11	49.85	58.85	<b>44.15</b>



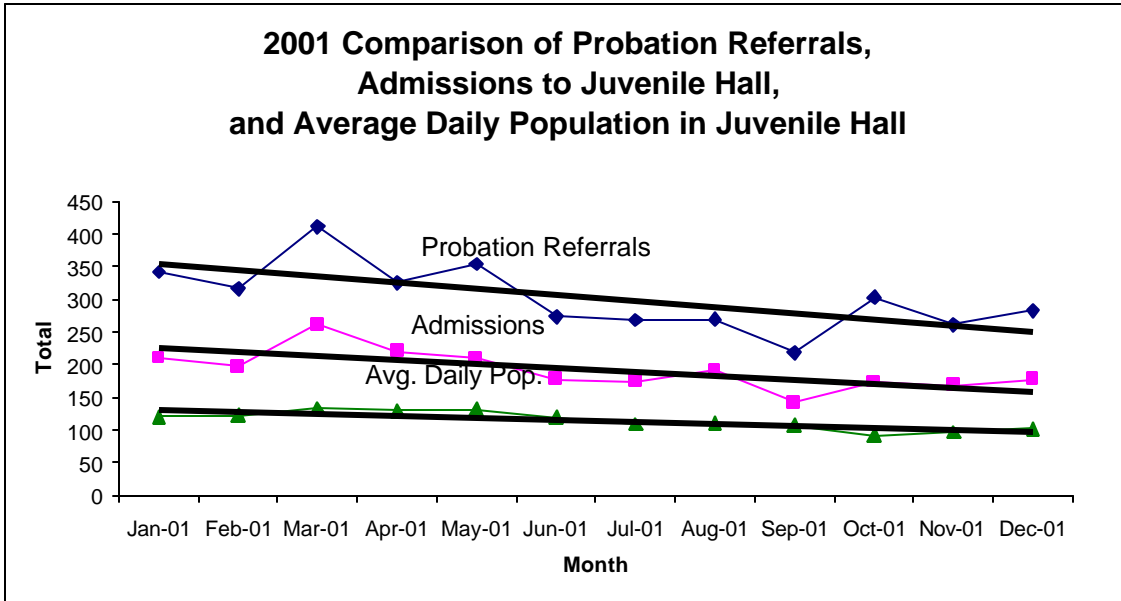
**Notes:** Less than one day of stay is calculated as one day.

<sup>1</sup> Length of stay is calculated according to release date for those who are released.

<sup>2</sup> For those still in custody, length of stay is calculated at the last day of the month.

### San Francisco Juvenile Probation

	Jan-01	Feb-01	Mar-01	Apr-01	May-01	Jun-01	Jul-01	Aug-01	Sep-01	Oct-01	Nov-01	Dec-01
Probation Referrals	342	316	412	326	354	273	268	269	218	303	261	283
JH Admissions	210	197	262	220	209	177	174	191	142	173	168	178
JH Avg. Daily Pop.	120	122	134	130	132	119	109	110	107	92	97	102



	Jan-02	Feb-02	Mar-02	Apr-02	May-02	Jun-02	Jul-02	Aug-02	Sep-02	Oct-02	Nov-02	Dec-02
Probation Referrals	284	285	291	269	346	211	260	250	270	311	284	242
JH Admissions	192	160	181	185	213	140	177	172	179	206	183	164
JH Avg. Daily Pop.	113	96	113	103	102	100	97	104	96	116	108	95

