

City and County of San Francisco



Juvenile Probation Department

Monthly Report for February 2004

Presented to the Juvenile Probation Commission

March 24th, 2004

Table of Contents

Section I Summary Reports

Juvenile Hall, Log Cabin Ranch Summary Statistics.....	1
Community Programs Summary Statistics	2
Probation Services Summary Statistics.....	4

Section II Current Month General Detail

Probation Referrals, Juvenile Admissions And Average Daily Population	6
Juvenile Hall Admissions and Average Daily Population.....	7
Commitments to out-of-home placement.....	8
Commitments to California Youth Authority.....	9
Log Cabin Ranch Admissions and Average Daily Population.....	10
Probation Referrals	11
Juvenile Hall And Log Cabin Ranch Incident Report	12
Juvenile Hall And Log Cabin Ranch Grievances Report.....	13
Bay Area Resident Juvenile Hall Comparison	14
Juvenile Hall Admissions.....	15
Juvenile Hall Detainees by Detention Reason.....	16
Juvenile Hall Average Daily Population by Rated Capacity.....	17
Juvenile Hall Average Length of Stay.....	18

Section III Demographics

Juvenile Hall Detainees by Sex and Race/Ethnic Origin.....	19
Juvenile Hall Detainees by Age	20
Juvenile Hall Detainees by Age and Sex.....	21
Juvenile Hall Detainees by Geographic Residence of Youth.....	22
Juvenile Hall Detainees by Race/Ethnic Origin and Sex.....	23

Section IV Historical Information

2000-2002 Probation Referrals	24
2000-2002 Juvenile Hall Admissions	25
2000-2002 Juvenile Hall Average Daily Population.....	26
2001-2002 Juvenile Hall Average Length of Stay by Month.....	27
2001-2002 Probation Referrals, Juvenile Hall Admissions and Average Daily Population	28



Section I

Summary Reports

Summary Report for the Month of February 2004

Juvenile Hall	<i>January 2003</i>	<i>January 2004</i>	<i>February 2003</i>	<i>February 2004</i>	<i>YTD 2003</i>	<i>YTD 2004</i>
Admissions	145	192	158	180	303	372
Average Daily Population	86	98.13	93.49	101.93	89.97	100.03
Average Length of Stay (Releases)	18.58	14.04	22.16	10.58	20.37	12.31
Average Length of Stay (In Custody)	56.97	52.35	44.53	57.73	50.75	55.04
Releases	144	181	143	166	287	347
Log Cabin Ranch						
Admissions:						
First Time Commitments	2	2	3	3	5	5
Recommitments	0	0	0	0	0	0
<i>Total</i>	2	2	3	3	5	5
Releases:						
Graduated	2	2	4	2	6	4
Escape	0	0	0	0	0	0
Other releases	4	2	0	0	4	0
<i>Total</i>	6	2	4	2	10	4
Average Daily Population	26	20	27	19	26.5	19.50
Grievances Filed						
Juvenile Hall:						
B1	0	1	0	0	0	1
B2	0	6	0	2	0	8
B3	0	0	0	1	0	1
B4	0	0	5	1	6	1
B5	0	2	2	0	2	2
G2 (CO-ED)	0	2	2	0	2	2
<i>Total</i>	0	11	9	4	10	15
Log Cabin Ranch	0	0	0	0	0	0
Incident Reports						
Juvenile Hall	12	13	16	10	28	23
Log Cabin Ranch	0	0	0	0	0	0
<i>Total</i>	12	13	16	10	28	23

Summary Report for the Month of February 2004

Community Programs	<i>Program Vacancies by Agency on February 2004</i>	<i>Active in program January 2003</i>	<i>Active in Program January 2004</i>	<i>Active in Program February 2003</i>	<i>Active in Program February 2004</i>
IHBS Monthly Client Count					
BayView Hunters Point Foundation	13	16	13	16	13
Chinatown Youth Center	0	10	13	10	13
Morrisania West, Inc.	0	13	12	11	12
Office of Samoan Affairs	2	9	9	9	9
Potrero Hill Neighborhood House	4	11	7	11	7
Instituto Familiar de La Raza	10	22	22	22	22
Vietnamese Youth Development Center	4	5	7	5	7
Brothers Against Guns	3	0	11	0	11
<i>Total</i>	36	86	94	84	94
<i>February 2004 Percent Program Utilization</i>	73%				
<i>February 2004 Percent Change from last report</i>	7%				

Summary Report for TANF and Girls Programs
Month: January 2004

PROGRAM	ANNUAL GOAL	NUMBER SERVED
California Community Dispute Services: Youth Accountability Boards	40	40
CARECEN: Tattoo Removal and Case Management	45	33
Center for Young Women's Development: Girls Services	40	94
Community Works – Girls Diversion Program	24	7
Community Works – Girls Therapeutic Arts Curriculum in Juvenile Hall	150	57
Community Works – ROOTS Support for Children of Incarcerated Parents	40	34
Edgewood Kinship Support Network	40	24
Family Restoration House: Life Skills	30	29
Girls 2000: Girls Services and Family Support Services	20	22
Instituto Familiar de la Raza – Case Management	10	6
Mission Neighborhood Center: Young Queens on the Rise – Girls Services	35	27
Performing Arts Workshop: Arts Education at Impact High School	30	26
SAGE: Girls Services	35	32
Samoan Community Development Center: Anger Management	75	48
Special Services for Groups – Occupational Therapy Training Program	50	60
United Way/Girls Justice Initiative: Detention-based Case Management & Inside Mentoring Program	300 72	129 56
Urban Services YMCA: Bayview Beacon	50	13
YGCIC Focus Vocational Programs	55	20
YGCIC GED Plus	50	15
YWCA – CITS Girls Mentorship	24	21
YWCA – FITS Girls Services	40	20

Summary Report for the Month of February 2004

Probation Services	<i>January 2004</i>	<i>February 2004</i>	<i>Year To Date 2004</i>
Probation Referrals	259	236	495
Petitions	88	78	166
Selected Court Dispositions:			
California Youth Authority	0	2	2
Log Cabin Ranch	0	3	3
Out of Home Placement	13	15	28
Other Probation	22	25	47
Violation of Probation Petitions Filed	12	5	17
California Youth Authority Monthly Count			
Institutions:			
Males	46	47	
Females	5	5	
Total	51	52	
Parole:			
Males	24	22	
Females	2	2	
Total	26	24	

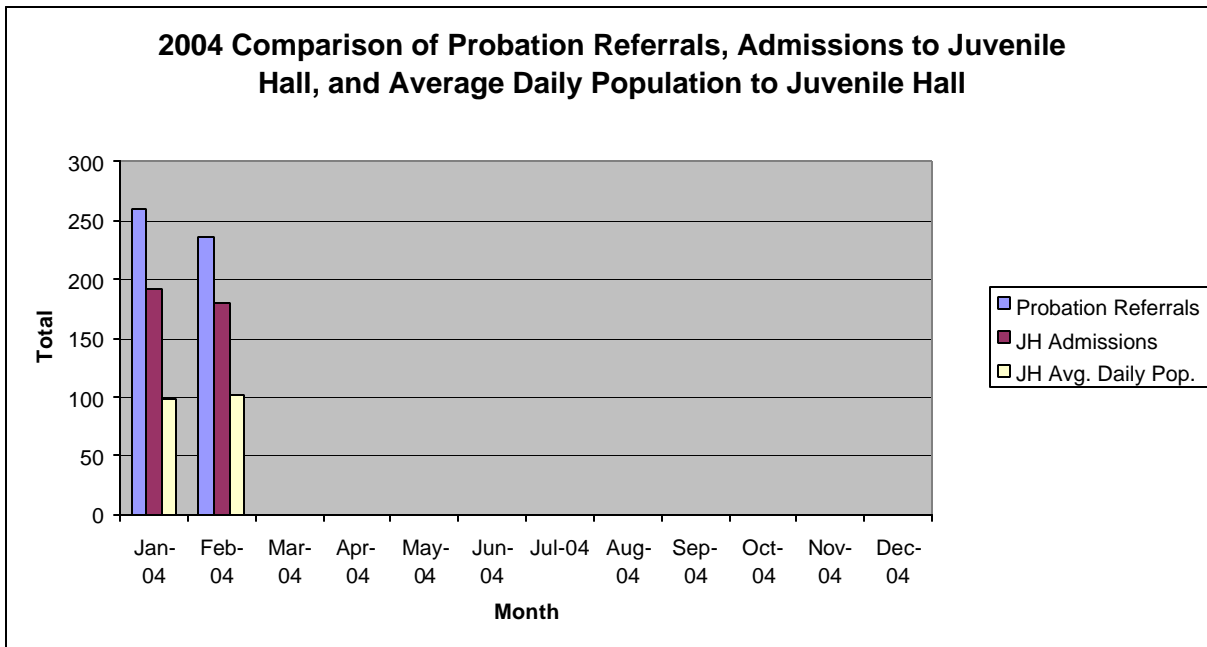
Summary Report for the Month of February 2004

Probation Services			
Caseload List	January 2004	February 2004	February Average # Youth by PO
South Intake	224	243	48
North Intake	171	164	27
Prevention Diversion	195	180	20
Serious Offenders	105	108	18
Supervision	149	153	19
County Placement	25	25	25
Private Placement	176	181	16
Drug Court	32	25	25
Family Integrated Treatment Services	115	123	15
<i>Total</i>	1192	1202	23
Special Services Unit	New	Closed	Active at end of Month
Record Sealings	13	7	139
Stepparent Adoptions	1	0	57
Terminations	0	0	11
Marriage Consents	0	1	5
Custody Evaluations	0	0	0
	Entered	Completed	Active at end of Month
Community Service	14	10	1156
Street Law (Still in session)	0	0	0
		Referred	Completed at end of Month
COPS (next class in March)		0	0
Theft Awareness (next class in March)		0	0
Anger Management (still in session)		23	0
Life Management Skills		4	0
Kids Turn Non-Violent Family Skills (still in session)		13	0
Information, Record Checks, Research & Photo Copying Juvenile Records For:	January 2004	February 2004	Year to Date 2004
Job Corps, Probation Departments,			
Military, Law Enforcement,			
Misc., (letters, Memos, Forms, etc.)	126	114	240

Section II
Current Month
General Detail

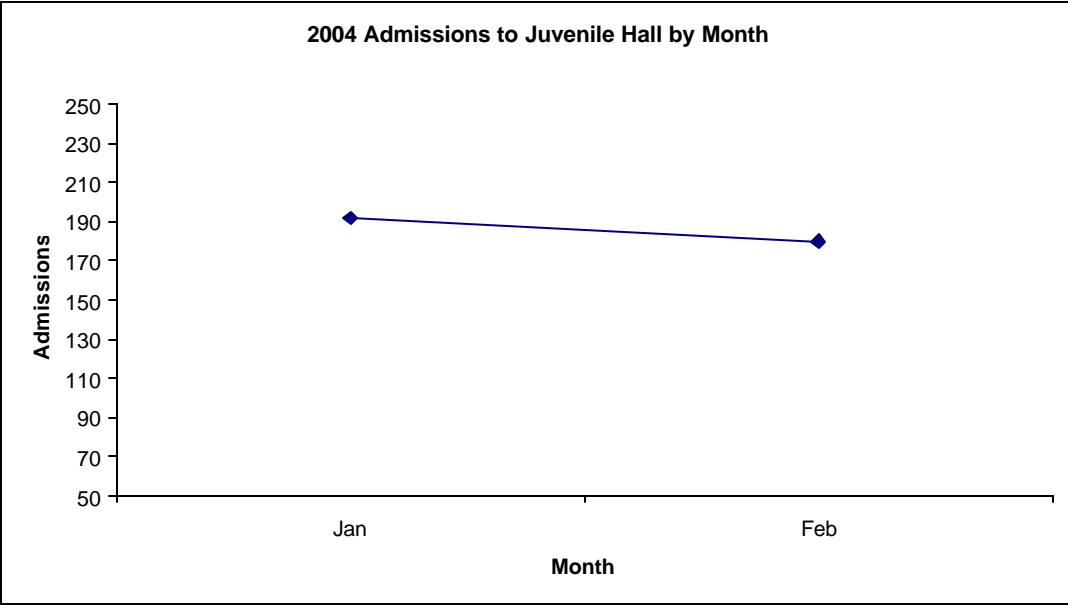
San Francisco Juvenile Probation

	Jan-04	Feb-04	Mar-04	Apr-04	May-04	Jun-04	Jul-04	Aug-04	Sep-04	Oct-04	Nov-04	Dec-04
Probation Referrals	259	236										
JH Admissions	192	180										
JH Avg. Daily Pop.	98	101										

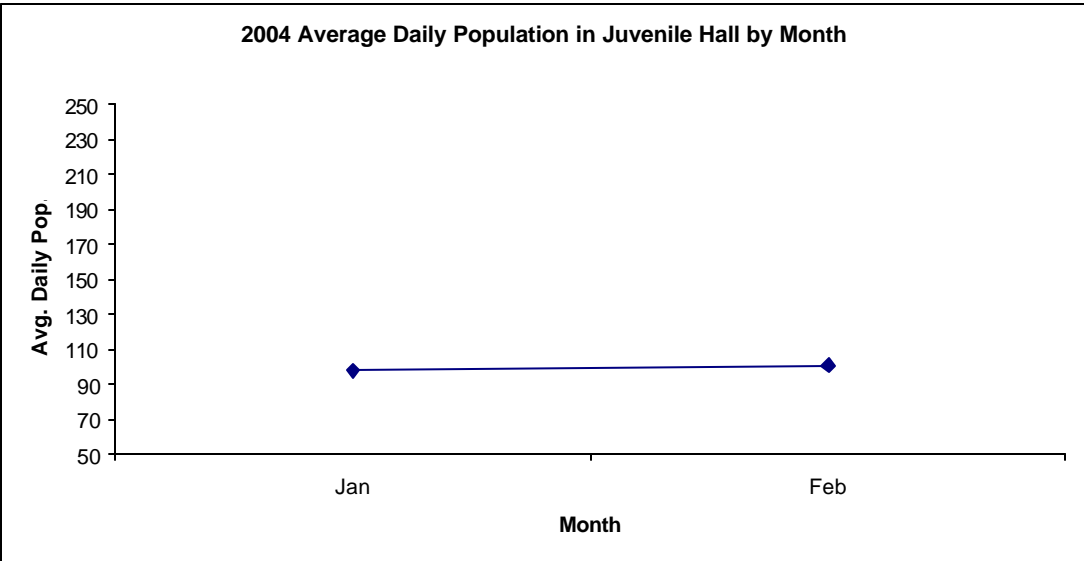


**San Francisco Juvenile Probation
Admissions and Average Daily Population
In Juvenile Hall
(Calendar Year 2004)**

Admissions	Jan	Feb	Mar	Apr	May	Jun	Jul	Aug	Sep	Oct	Nov	Dec	Total
2004	192	180											372



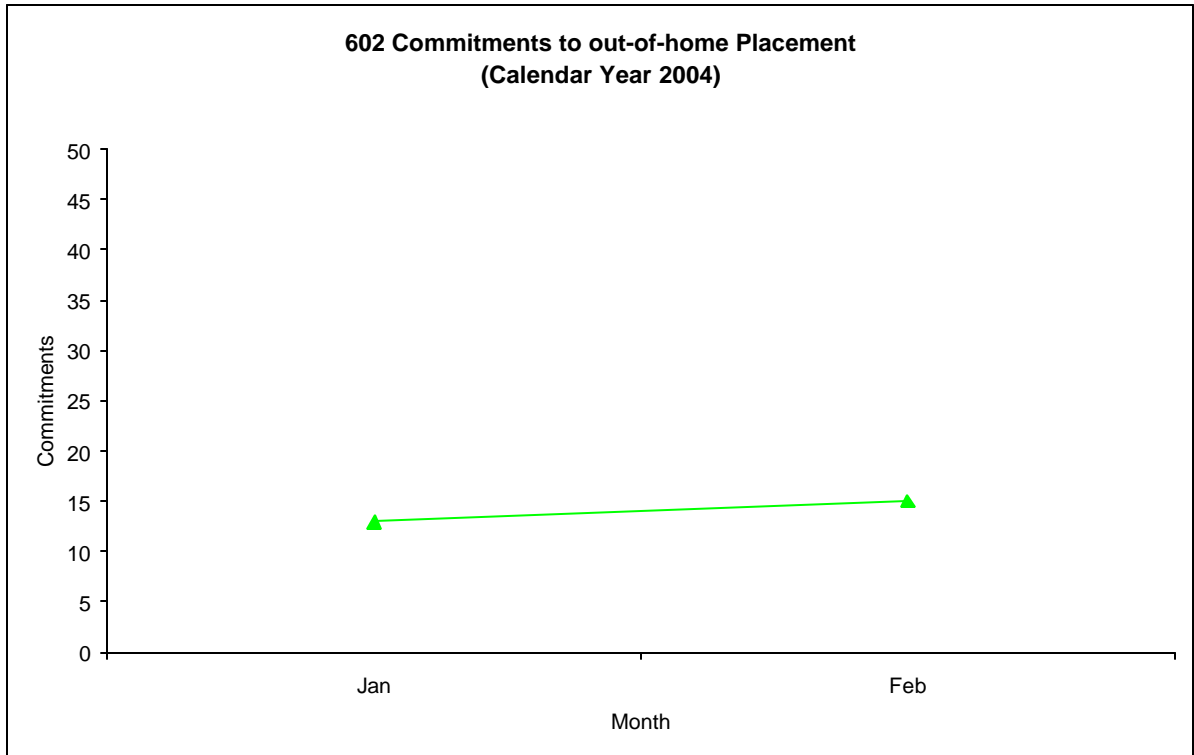
Avg. Daily Pop.	Jan	Feb	Mar	Apr	May	Jun	Jul	Aug	Sep	Oct	Nov	Dec	Total
2004	98	101											100



Out-of-Home Placement¹

Commitments of 602's Calendar Year 2004

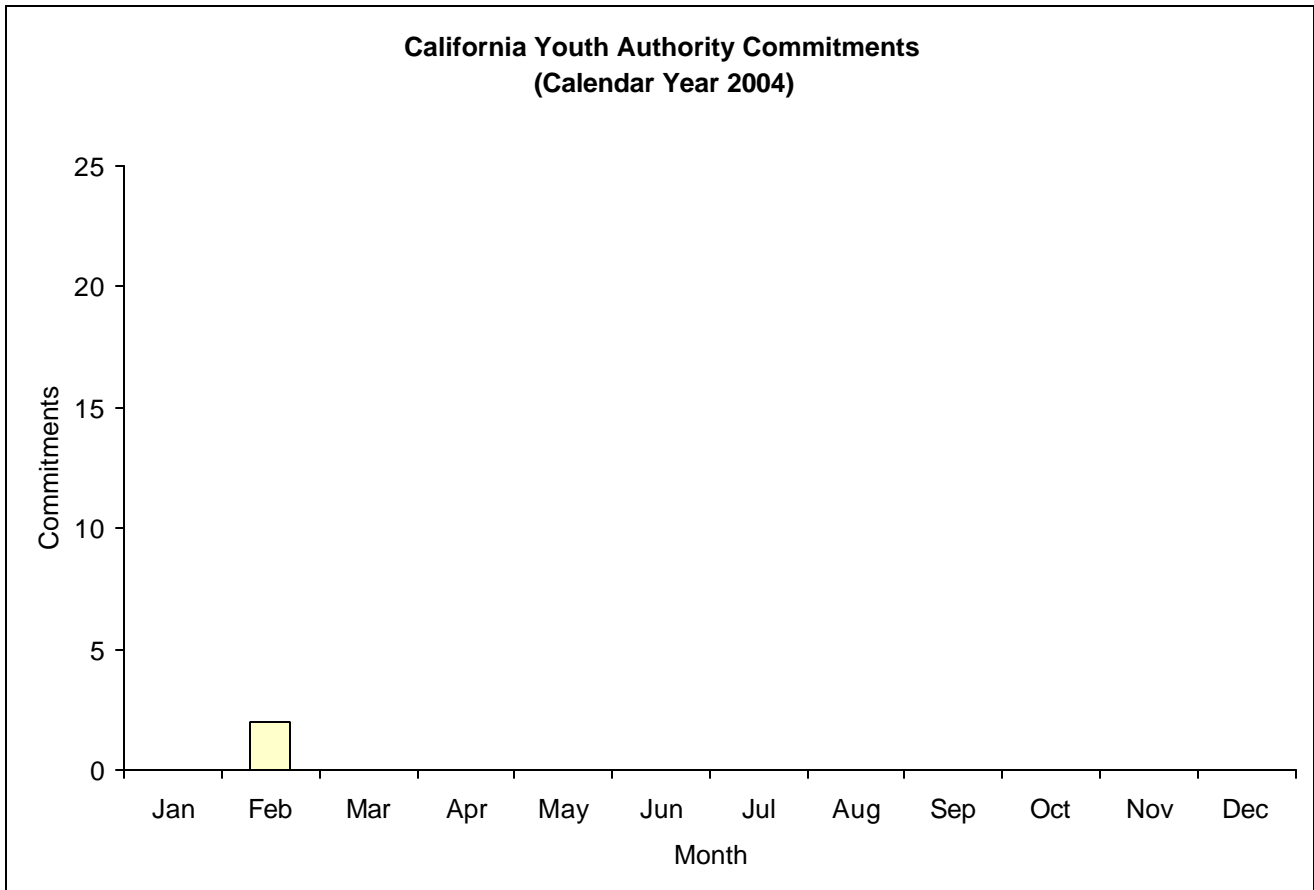
Commitments	Jan	Feb	Mar	Apr	May	Jun	Jul	Aug	Sep	Oct	Nov	Dec	Total
2004	13	15											28



¹ This report is based on 602 Commitments to out-of-home placements. If there is a 601 commitment, it will show as a footnote here. Figures are regularly updated to include reports from previous reporting periods.

California Youth Authority Commitments (Calendar Year 2004)

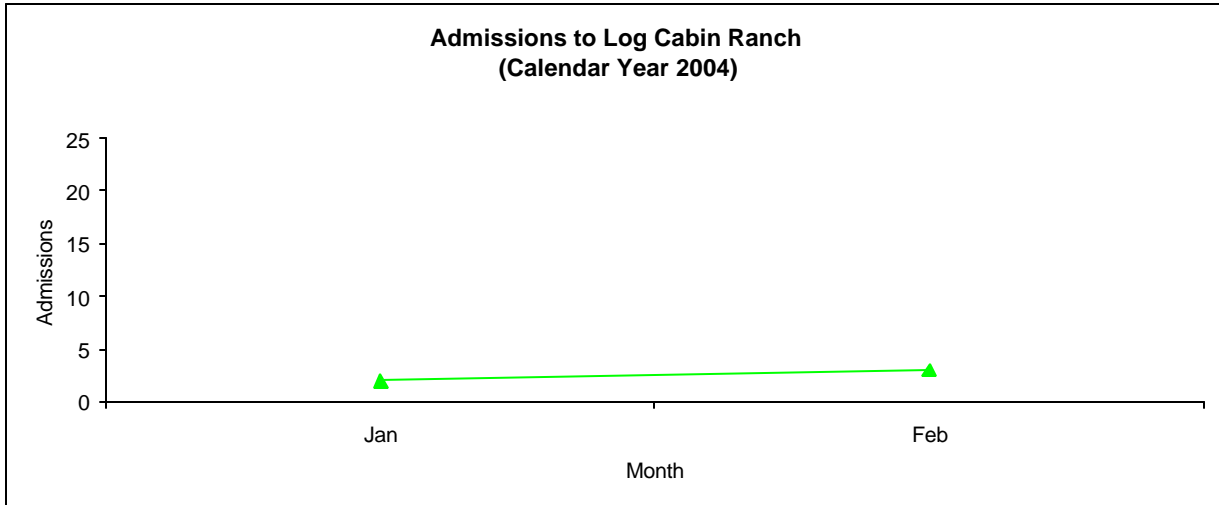
Commitments	Jan	Feb	Mar	Apr	May	Jun	Jul	Aug	Sep	Oct	Nov	Dec	Total
2004	0	2											2



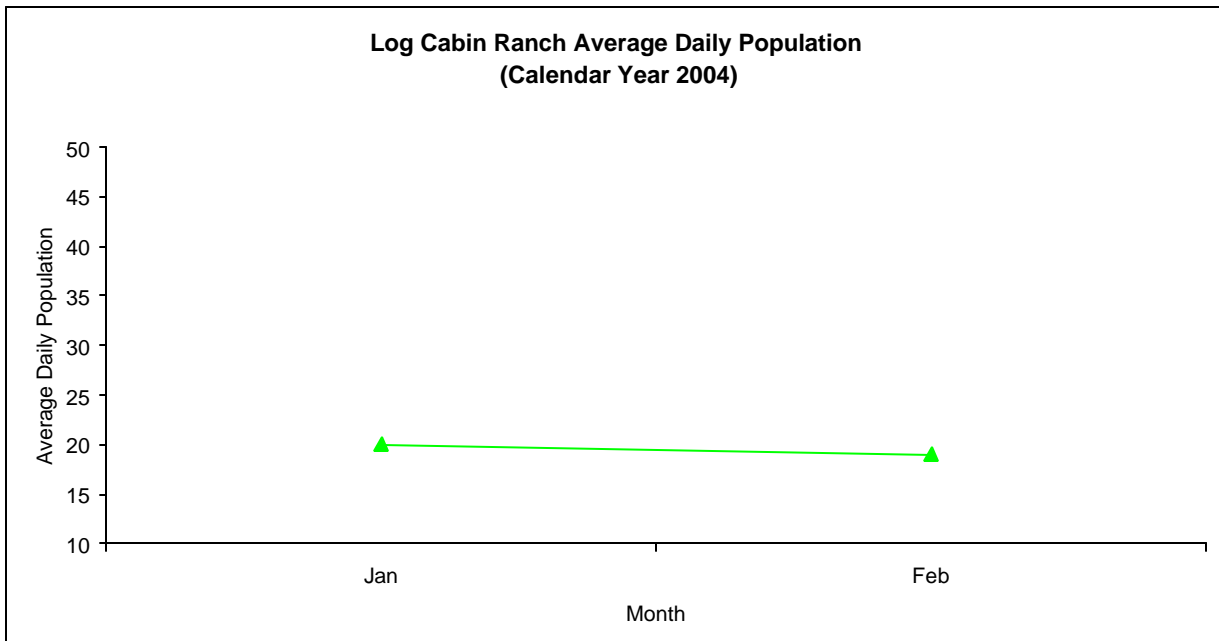
Log Cabin Ranch

Admissions and Average Daily Population (Calendar Year 2004)

Admissions	Jan	Feb	Mar	Apr	May	Jun	Jul	Aug	Sep	Oct	Nov	Dec	Total
2004	2	3											5



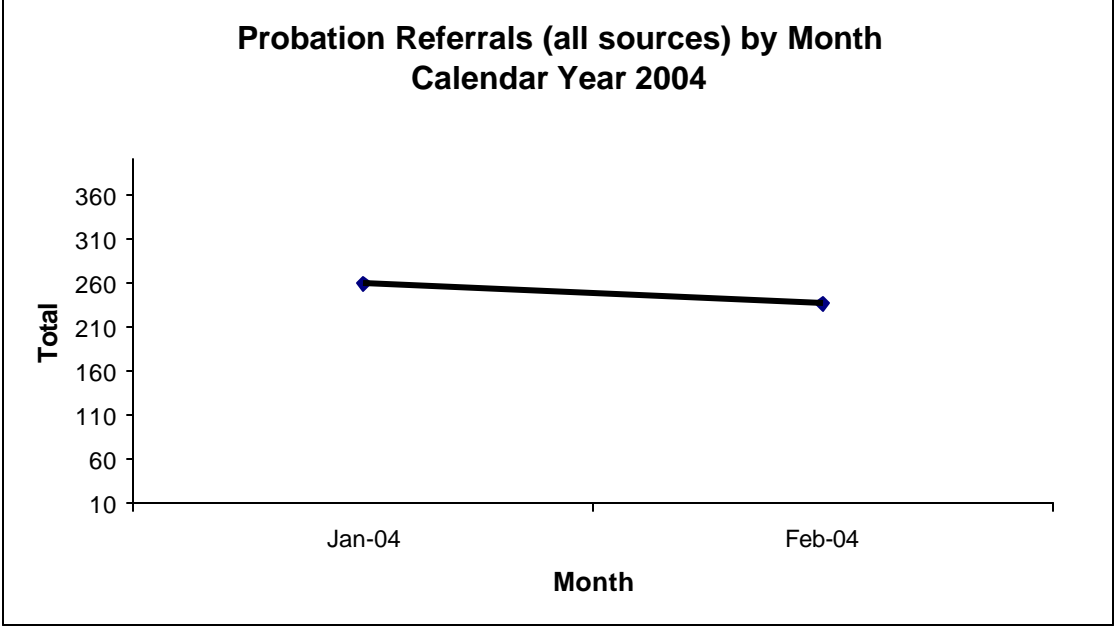
Avg. Daily Pop.	Jan	Feb	Mar	Apr	May	Jun	Jul	Aug	Sep	Oct	Nov	Dec	Total
2004	20	19											19.50



Probation Referrals by Month Calendar Year 2004

Probation Referrals (all sources) by Month (602 W&I)

Jan-04	259
Feb-04	236
Mar-04	
Apr-04	
May-04	
Jun-04	
Jul-04	
Aug-04	
Sep-04	
Oct-04	
Nov-04	
Dec-04	



SAN FRANCISCO JUVENILE PROBATION DEPARTMENT
 MONTHLY INCIDENT REPORT FORM
 MONTH/YEAR: FEBRUARY 2004

Log Cabin Ranch	Battery on Staff	Injury to Staff due to Restraint of Minor	Fight	Battery Youth on Youth	Attempted Escape	AWOL	Attempted Suicide	Serious Contraband (Weapon Illegal Drug)
	0	0	0	0	0	0	0	0
	Battery on Staff with Injury	Fire	Fight with Injury	Battery Youth on Youth with Injury	Escape	Death	Suicide	Major Property Destruction
0	0	0	0	0	0	0	0	0
Juvenile Hall	Battery on Staff	Injury to Staff due to Restraint of Minor	Fight	Battery Youth on Youth	Attempted Escape	AWOL	Attempted Suicide	Serious Contraband (Weapon Illegal Drug)
	0	0	2	3	0	0	1	1
	Battery on Staff with Injury	Fire	Fight with Injury	Battery Youth on Youth with Injury	Escape	Death	Suicide	Major Property Destruction
0	0	0	1	0	0	0	0	2

Grievances Filed February 2004

San Francisco Juvenile Probation Department

Juvenile Hall



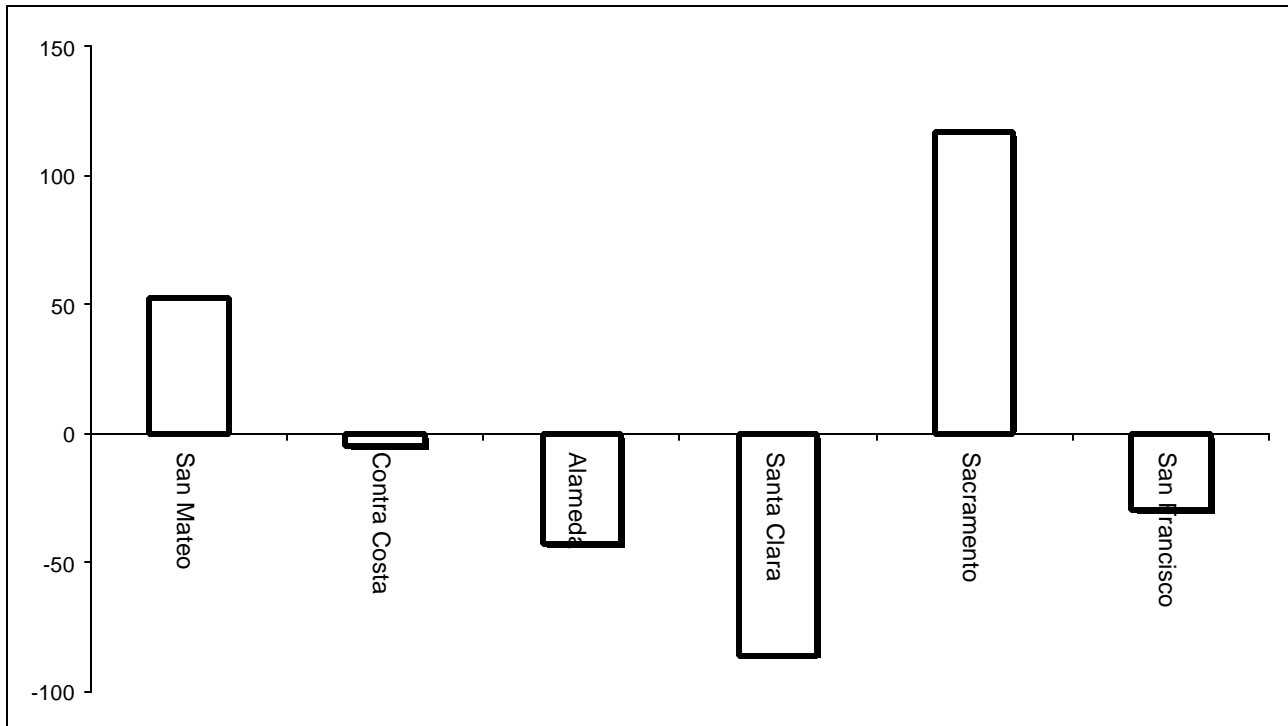
***Grievances Filed February 2004
San Francisco Probation Department
From the office of the Ombudsman.***

<i>Area of Infraction</i>	<i>Title 15 Article/Section</i>	<i>B1</i>	<i>Girls Unit</i>	<i>B2</i>	<i>B3</i>	<i>B4</i>	<i>B5</i>	<i>TOTAL</i>
<i>Food</i>	<i>9.1460</i>	<i>0</i>	<i>0</i>	<i>0</i>	<i>1</i>	<i>0</i>	<i>0</i>	<i>1</i>
<i>Personal Hygiene</i>	<i>10.1486</i>	<i>0</i>	<i>0</i>	<i>0</i>	<i>0</i>	<i>1</i>	<i>0</i>	<i>1</i>
<i>Programs and Activities</i>	<i>6.1371</i>	<i>0</i>	<i>0</i>	<i>2</i>	<i>0</i>	<i>0</i>	<i>0</i>	<i>2</i>
<i>Discipline Process</i>	<i>7.1391</i>	<i>0</i>	<i>0</i>	<i>0</i>	<i>0</i>	<i>0</i>	<i>0</i>	<i>0</i>
<i>Total</i>		<i>0</i>	<i>0</i>	<i>2</i>	<i>1</i>	<i>1</i>	<i>0</i>	<i>4</i>

Log Cabin Ranch

Type	Log Cabin Ranch
Food/Snacks	0
Laundry	0
Personal Property	0
Phone Calls	0
Procedures	0
Head Call	0
Discipline	0
Complaints vs. Staff	0
Cottage Change	0
Medical	0
School	0
Probation	0
Miscellaneous	0
Total	0

Bay Area Resident Juvenile Hall Comparison Over/Under Capacity on March 3rd, 2004

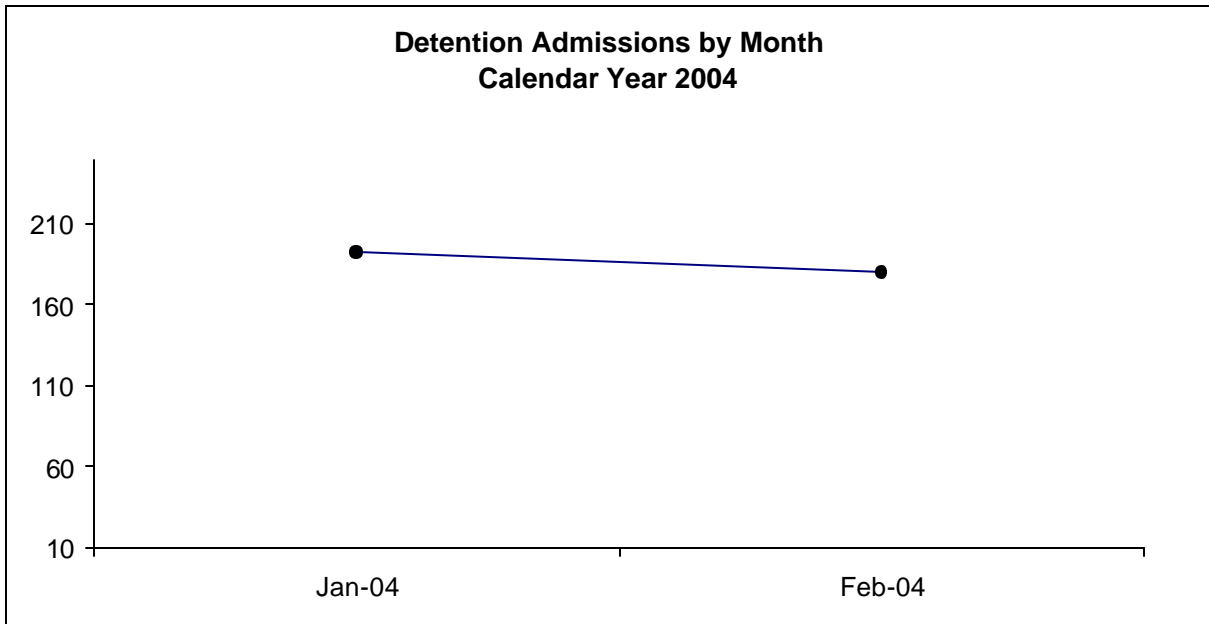


	Rated Capacity	Actual	Over/Under Capacity
San Mateo	130	182	52
Contra Costa	160	155	-5
Alameda	288	245	-43
Santa Clara	329	243	-86
Sacramento	256	373	117
San Francisco	132	102	-30

Juvenile Hall Admissions by Month Calendar Year 2004

Detention Admissions by Month

Jan-04	192
Feb-04	180
Mar-04	
Apr-04	
May-04	
Jun-04	
Jul-04	
Aug-04	
Sep-04	
Oct-04	
Nov-04	
Dec-04	

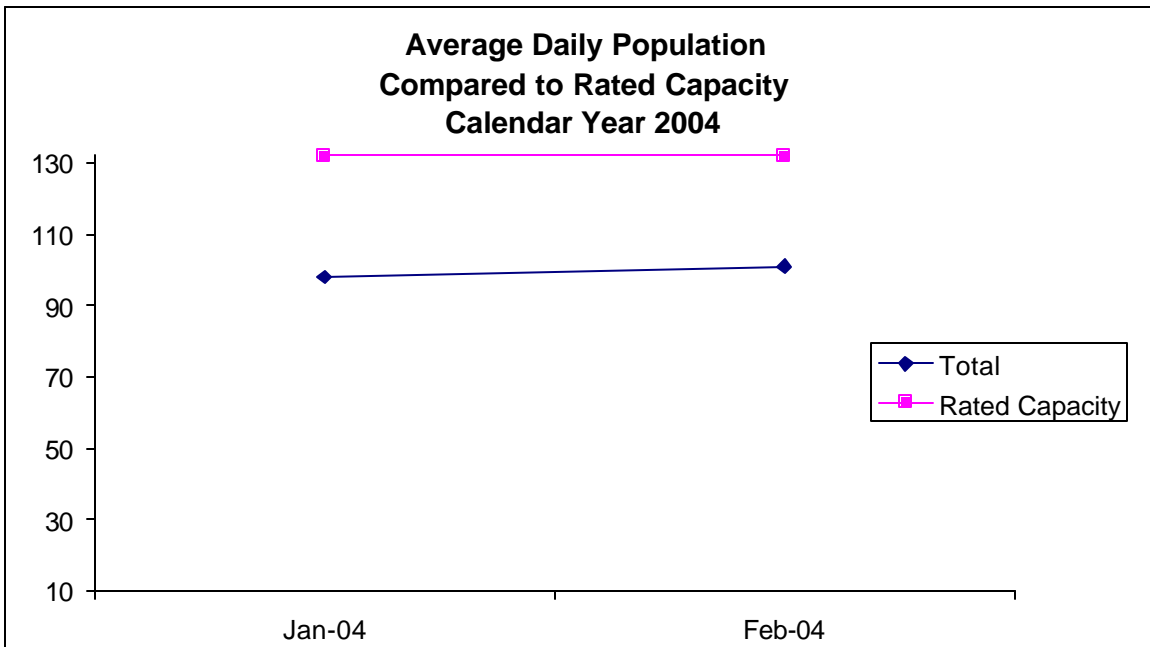


**Characteristics of Juvenile Hall Detainees on February 29th, 2004
Using CJIS Code From the Department of Justice**

Detention Reason	Offense Code	MFI	Count	%
MURDER	187 (A) PC	F	5	4.63%
ATTEMPTED MURDER	664 /187 (A) PC	F	6	5.56%
ORAL COPULATION IN CONCERT W/FORCE/ETC	288 A (D)(1) PC	F	4	3.70%
ADULT GIVE/ETC CONT SUB TO MINOR UND 14 IN PUBLIC PARK	11353.7 HS	F	1	0.93%
SEXUAL PENETRATION WITH FORCE/ETC	289 (A)(1) PC	F	2	1.85%
CARJACKING	215 PC	F	2	1.85%
KIDNAPPING	207 (A) PC	F	1	0.93%
ROBBERY	212.5 PC	F	3	2.78%
ASSAULT W/DEADLY WEAPON ON TRANSPORTATION PERSONNEL/ETC	245.2 PC	F	1	0.93%
TRANSPORT/SELL NARCOTIC/CONTROLLED SUBSTANCE	11352 (A) HS	F	6	5.56%
POSSESS/PURCHASE COCAINE BASE FOR SALE	11351.5 HS	F	3	2.78%
BURGLARY	459 PC	F	5	4.63%
ROBBERY:SECOND DEGREE	212.5(C) PC	F	10	9.26%
SELL/FURNISH/ETC MARIJUANA/HASHISH	11360 (A) HS	F	1	0.93%
INFLICT CORPORAL INJURY ON SPOUSE/COHABITANT	273.5 PC	F	1	0.93%
ASSAULT:DEADLY WEAPON OR FORCE:POSSIBLE GREAT BODILY INJ	245 (A) PC	F	6	5.56%
FORCE OR ADW NOT FIREARM:GBI LIKELY	245 (A)(1) PC	F	4	3.70%
BATTERY ON CUSTODIAL OFFICER	243.1 PC	F	1	0.93%
POSSESS NARCOTIC CONTROLLED SUBSTANCE	11350 (A) HS	F	1	0.93%
POSSESS MARIJUANA FOR SALE	11359 HS	F	1	0.93%
CARRY CONCEALED WEAPON IN VEHICLE W/PRIOR FELONY CONVICTION	12025 (A)(1) PC	F	1	0.93%
CARRY CONCEALED WEAPON WHILE ENGAGED IN CRIMINAL STREET GANG	12025 (B) PC	F	1	0.93%
FALSE IMPRISONMENT WITH VIOLENCE/FRAUD/DECEIT/ETC	237 (A) PC	F	1	0.93%
OBSTRUCT/RESIST EXECUTIVE OFFICER	69 PC	F	1	0.93%
THREATEN CRIME W/INTENT TO TERRORIZE	422 PC	F	1	0.93%
TAKE VEHICLE W/O OWNER'S CONSENT/VEHICLE THEFT	10851 (A) VC	F	2	1.85%
POSSESS CONTROLLED SUBSTANCE	11377 (A) HS	F	1	0.93%
POSSESS WEAPON/ETC AT SCHOOL	626.10 PC	F	1	0.93%
ACCESSORY	32 PC	F	1	0.93%
VANDALISM:DAMAGE PROPERTY	594 (A)(2) PC	F	2	1.85%
OBSTRUCT/RESIST/ETC PUBLIC/PEACE OFFICER/EMERGENCY MED TECH	148 (A)(1) PC	M	1	0.93%
BATTERY ON PEACE OFFICER/EMERGENCY PERSONNEL/ETC	243 (B) PC	M	1	0.93%
DISORDERLY CONDUCT:PROSTITUTION	647 (B) PC	M	2	1.85%
DISORDERLY CONDUCT:ALCOHOL	647 (F) PC	M	1	0.93%
FAIL TO OBEY ORDER OF JUVENILE COURT 602 WI	777 (A)(2) WI	M	4	3.70%
CHANGE OF PLACEMENT/PLACEMENT FAILURE	737 WI	M	9	8.33%
COURT ORDER 602	CTORD 602 XX	X	7	6.48%
LCR MEDICAL	LCR MED XX	X	1	0.93%
VIOLATION(S) OF HOME SUPERVISION CONDITION	628.1 WI	M	3	2.78%
WARRANT 602	WRNT602 XX	X	3	2.78%
16				
<i>F=Felony, M= Misdemeanor, X = Other</i>				Total 108 100.00%

**Average Daily Population
By Rated Capacity
Calendar Year 2004**

	Total	Rated Capacity
Jan-04	98	132
Feb-04	101	132
Mar-04		132
Apr-04		132
May-04		132
Jun-04		132
Jul-04		132
Aug-04		132
Sep-04		132
Oct-04		132
Nov-04		132
Dec-04		132



Juvenile Hall Average Length of Stay

For the Month of February 2004

¹Released

Range of Days	<i>1-10 days</i>	<i>11-20 days</i>	<i>21-30 days</i>	<i>30 or more days</i>	Total
# of Youth Released	126	16	11	13	166
% of Population	71.30%	8.70%	3.80%	16.30%	100%
# of Days	377	225	283	871	1756
% of Total Days	21.47%	12.81%	16.12%	49.60%	100%
Average Length of Stay	2.99	14.06	25.73	67.00	10.58

²In Custody

Range of Days	<i>1-10 days</i>	<i>11-20 days</i>	<i>21-30 days</i>	<i>30 or more days</i>	Total
# of Youth Detained	29	18	8	53	108
% of Population	38.60%	18.10%	12.60%	30.70%	100%
# of Days	162	263	202	5608	6235
% of Total Days	2.60%	4.22%	3.24%	89.94%	100%
Average Length of Stay	5.59	14.61	25.25	105.81	57.73

Notes: Less than one day of stay is calculated as one day.

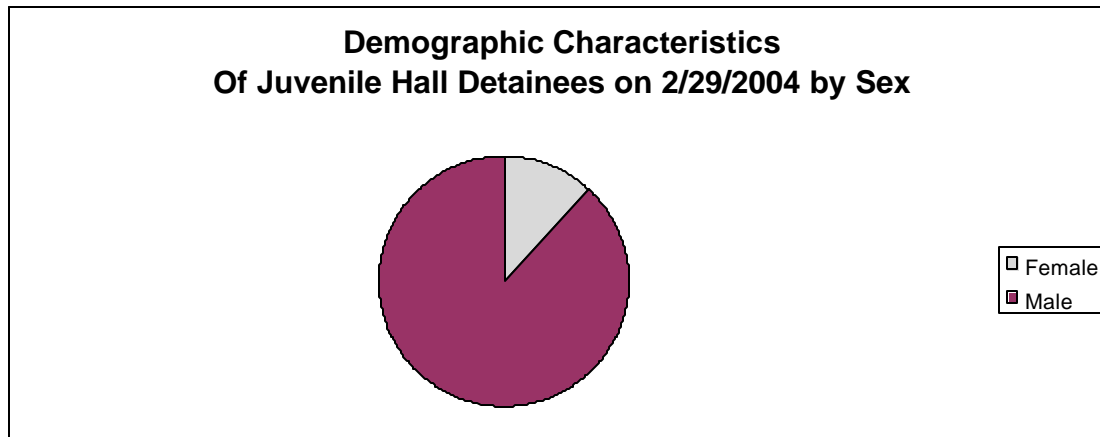
¹Length of stay is calculated according to release date for those who are released.

²For those still in custody, length of stay is calculated at the last day of the month.

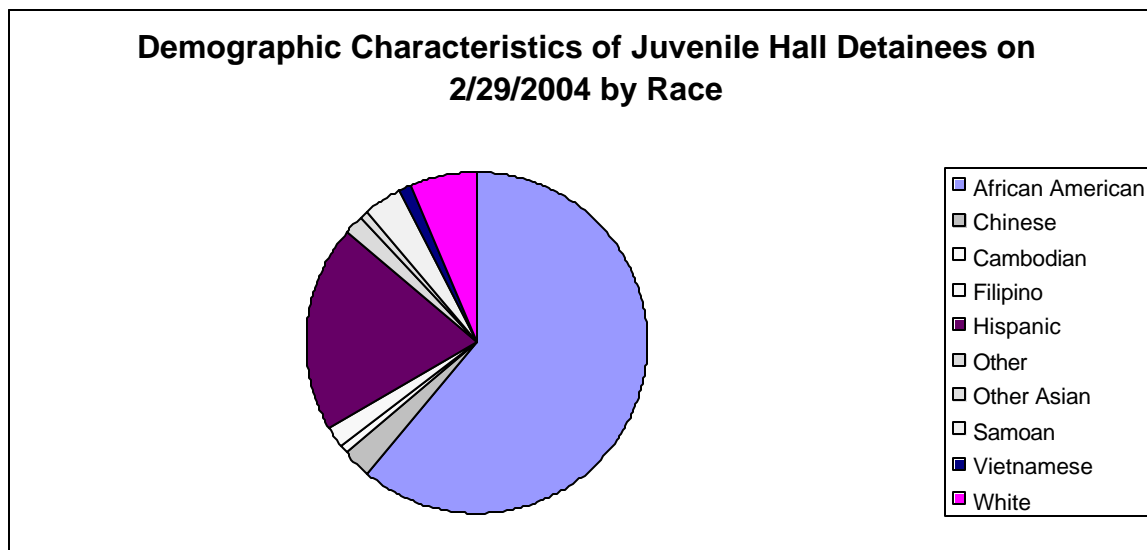
Section III

Demographics

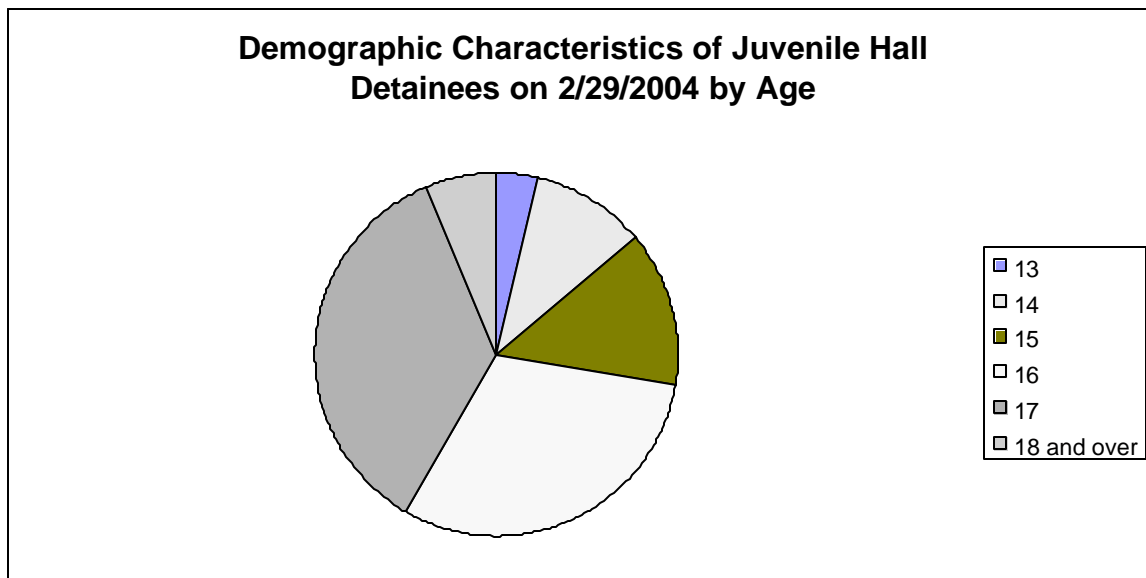
Sex	Frequency	Percent
Female	13	12.04%
Male	95	87.96%
Total	108	100.00%



Race/Ethnic Origin	Frequency	Percent
African American	66	61.11%
Chinese	3	2.78%
Cambodian	1	0.93%
Filipino	2	1.85%
Hispanic	21	19.44%
Other	2	1.85%
Other Asian	1	0.93%
Samoan	4	3.70%
Vietnamese	1	0.93%
White	7	6.48%
Total	108	100.00%

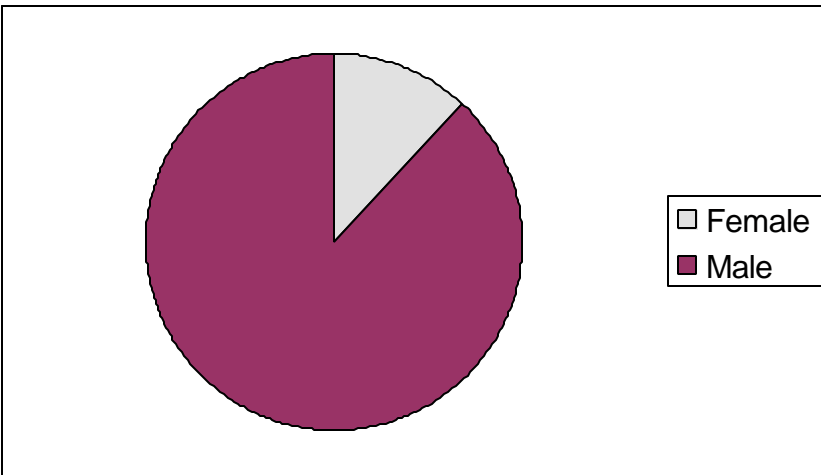


Age	Frequency	Percent
13	4	3.70%
14	11	10.19%
15	15	13.89%
16	33	30.56%
17	38	35.19%
18 and over	7	6.48%
Total	108	100.00%



Demographic Characteristics of Juvenile Hall Detainees
on 2/29/2004
Age by Sex

Age	Female	Male	Total	
13	0	4	4	3.70%
14	2	9	11	10.19%
15	2	13	15	13.89%
16	4	29	33	30.56%
17	5	33	38	35.19%
18 and over	0	7	7	6.48%
Total	13	95	108	100.00%
	12.04%	87.96%	100.00%	



Demographic Characteristics
Of Juvenile Hall Detainees on February 29th, 2004

Geographic Residence of Youth	Frequency	Percent
Richmond	3	2.8
Marina	2	1.9
North of Market/Downtown	2	1.9
Treasure Island/Yerba Buena	1	.9
Western Addition	15	13.9
South of Market/Tenderloin	2	1.9
Sunset	2	1.9
Inner Mission	7	6.5
Potrero	4	3.7
Parkside	2	1.9
Ingleside (West of Twin Peaks)	7	6.5
Outer Mission	15	13.9
Bayview	21	19.4
Non-San Francisco and Unavailable	25	23.1
	-----	-----
Total	108	100.0

*Non-San Francisco and Unavailable	Frequency	Percent
ALBANY	1	4.0
ANGWIN	1	4.0
ANTIOCH	1	4.0
ANZA	1	4.0
CLEARLAKE OAKS	1	4.0
HONDURAS	1	4.0
DALY CITY	1	4.0
HAYWARD	1	4.0
LAKEPORT	1	4.0
ORANGEVALE	2	8.0
PITTSBURGH	1	4.0
SACRAMENTO	2	8.0
SAN ANDREAS	1	4.0
SAN JOSE	1	4.0
SAN MATEO	1	4.0
UNAVAILABLE	7	28.0
VALLEJO	1	4.0
	-----	-----
Total	25	100.0

Demographic Characteristics
Of Juvenile Hall Detainees on February 29th, 2004

Race/Ethnic Origin by Sex

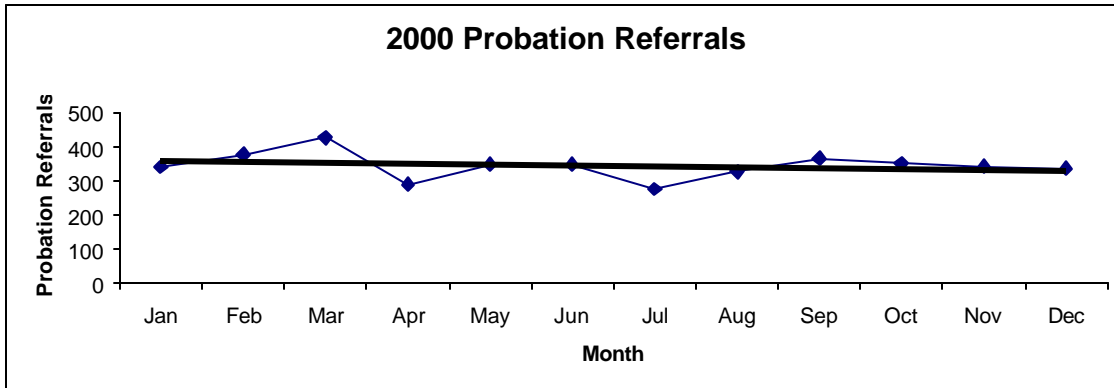
RACE	Count	SEX		Row Total
		Female F	Male M	
OTHER ASIAN			1	1 .9
AFRICAN AMERICAN	9		57	66 61.1
CHINESE			3	3 2.8
CAMBODIAN	1			1 .9
FILIPINO	1		1	2 1.9
HISPANIC	1		20	21 19.4
OTHER			2	2 1.9
SAMOAN			4	4 3.7
VIETNAMESE			1	1 .9
WHITE	1		6	7 6.5
	Column Total	13 12.0	95 88.0	108 100.0

Section IV

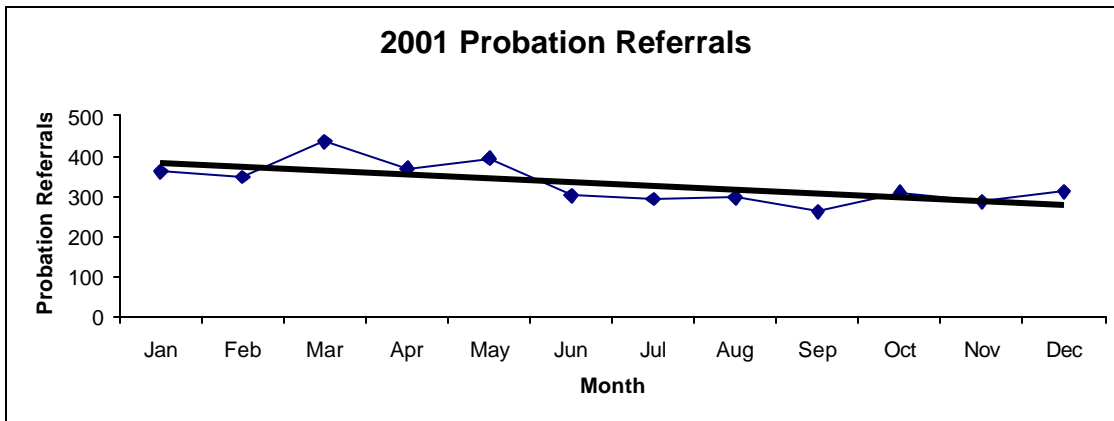
Historical Information

San Francisco Juvenile Probation
Probation Referrals (all sources) By Month
 (2000-2003)

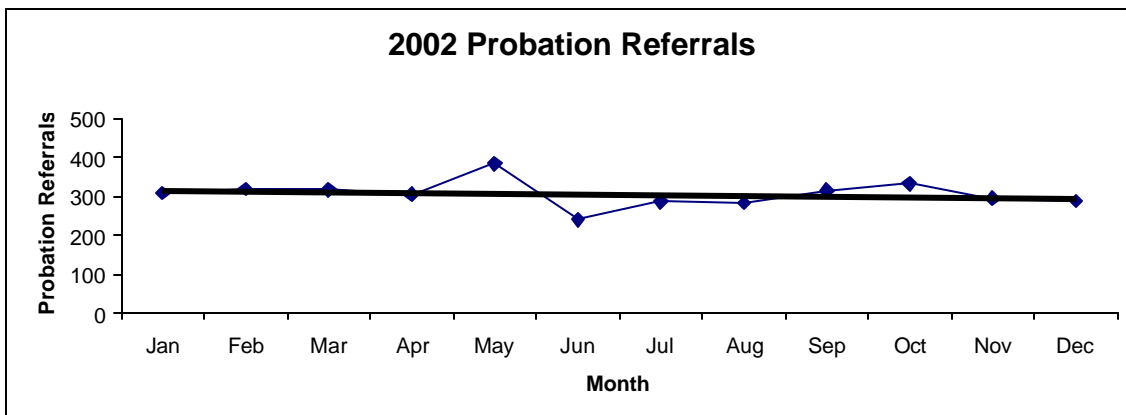
2000 Probation Referrals	Jan	Feb	Mar	Apr	May	Jun	Jul	Aug	Sep	Oct	Nov	Dec	Total
	341	378	427	291	350	349	277	328	367	351	342	338	4139



2001 Probation Referrals	Jan	Feb	Mar	Apr	May	Jun	Jul	Aug	Sep	Oct	Nov	Dec	Total
	361	348	437	370	394	301	292	296	262	309	287	311	3968

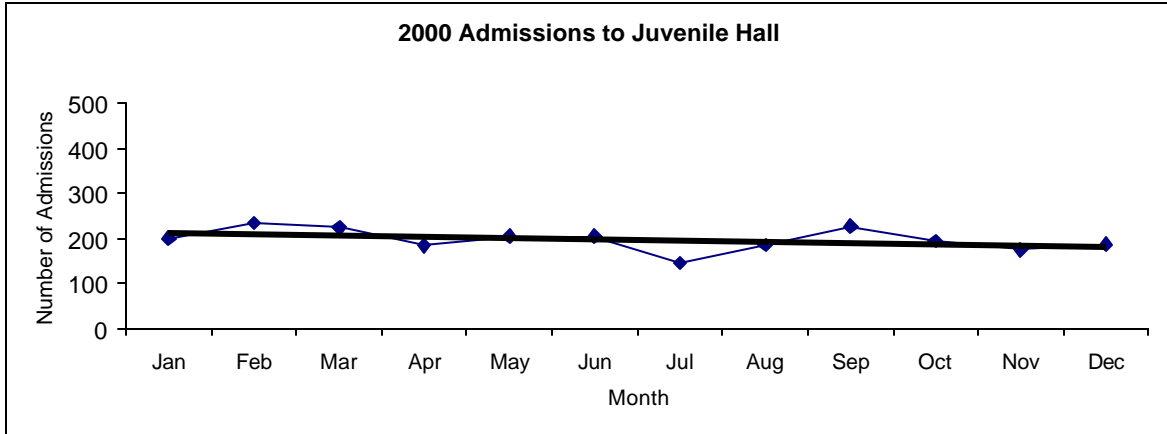


2002 Probation Referrals	Jan	Feb	Mar	Apr	May	Jun	Jul	Aug	Sep	Oct	Nov	Dec	Total
	308	320	318	305	384	240	286	283	315	333	294	289	3675

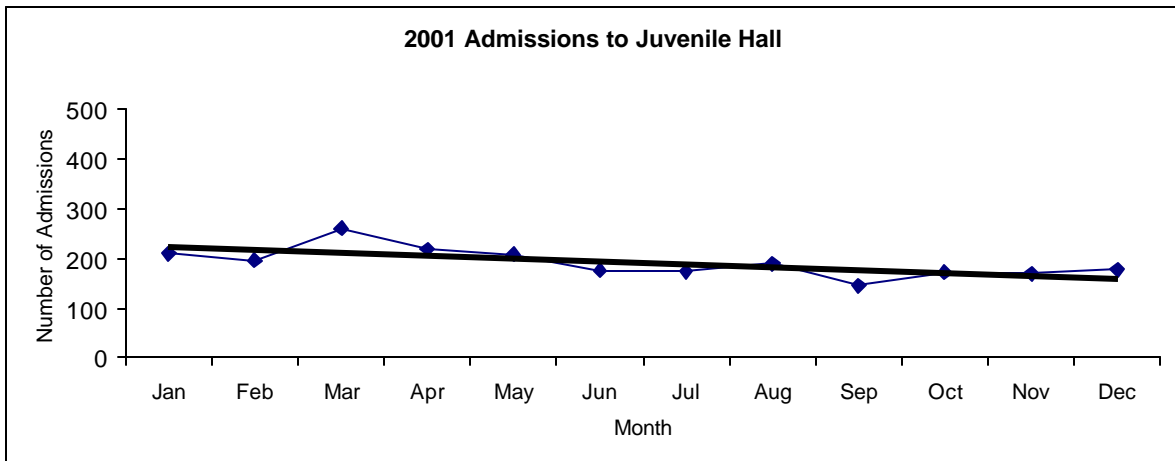


San Francisco Juvenile Probation
Juvenile Hall Admissions By Month
 (2000-2002)

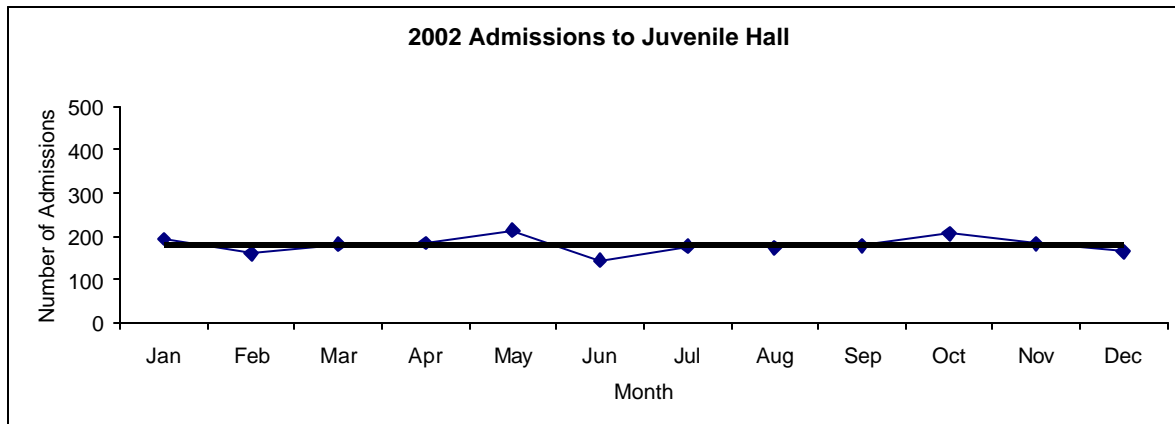
2000 Admissions	Jan	Feb	Mar	Apr	May	Jun	Jul	Aug	Sep	Oct	Nov	Dec	Total
	201	234	225	184	205	205	146	185	227	194	176	187	2369



2001 Admissions	Jan	Feb	Mar	Apr	May	Jun	Jul	Aug	Sep	Oct	Nov	Dec	Total
	210	197	260	220	209	176	174	190	145	173	170	178	2302

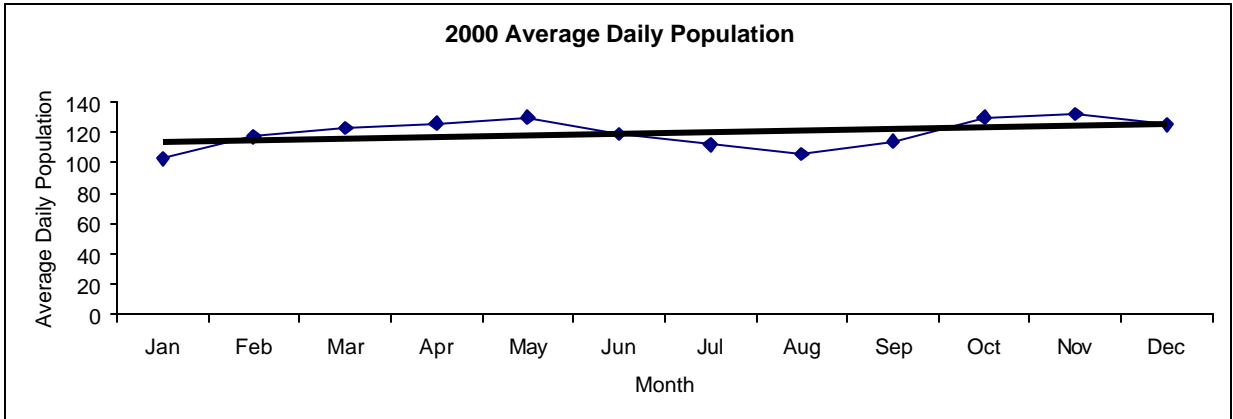


2002 Admissions	Jan	Feb	Mar	Apr	May	Jun	Jul	Aug	Sep	Oct	Nov	Dec	Total
	193	160	181	185	213	145	177	173	179	206	183	164	2159

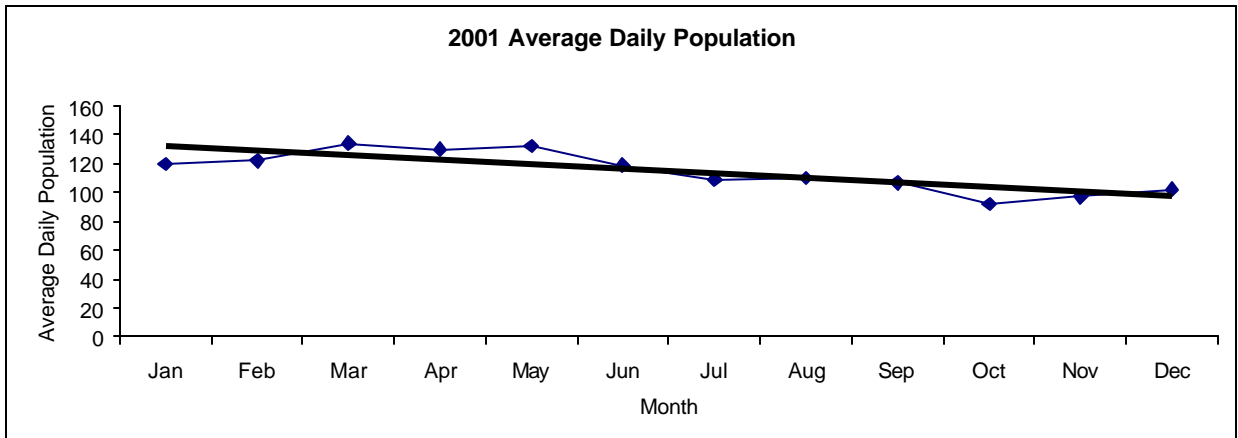


**San Francisco Juvenile Probation
 Juvenile Hall Average Daily Population By Month
 (2000-2002)**

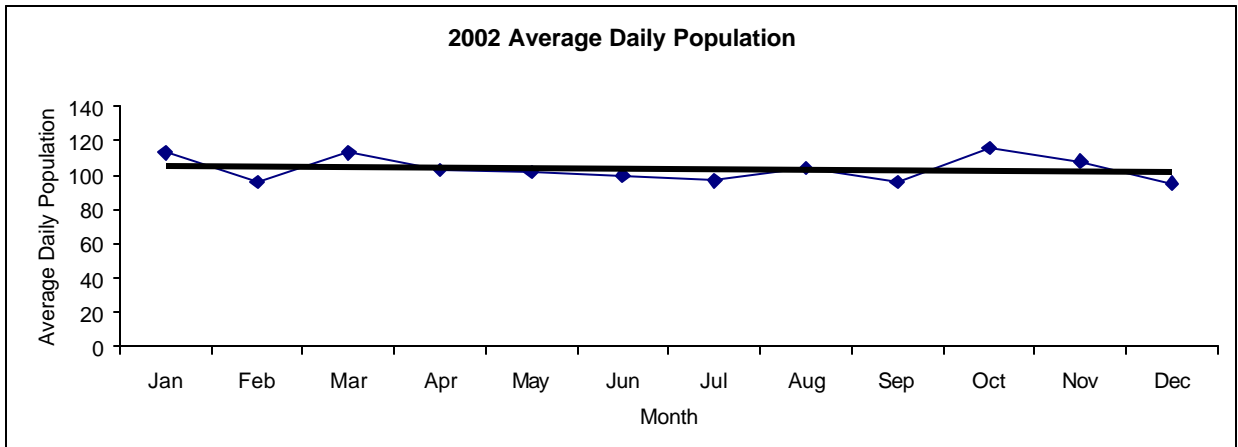
2000 Avg. Daily Pop.	Jan	Feb	Mar	Apr	May	Jun	Jul	Aug	Sep	Oct	Nov	Dec	Total
	103	117	123	126	130	119	112	106	114	130	132	125	120



2001 Avg. Daily Pop.	Jan	Feb	Mar	Apr	May	Jun	Jul	Aug	Sep	Oct	Nov	Dec	Total
	120	122	134	130	132	119	109	110	107	92	97	102	115

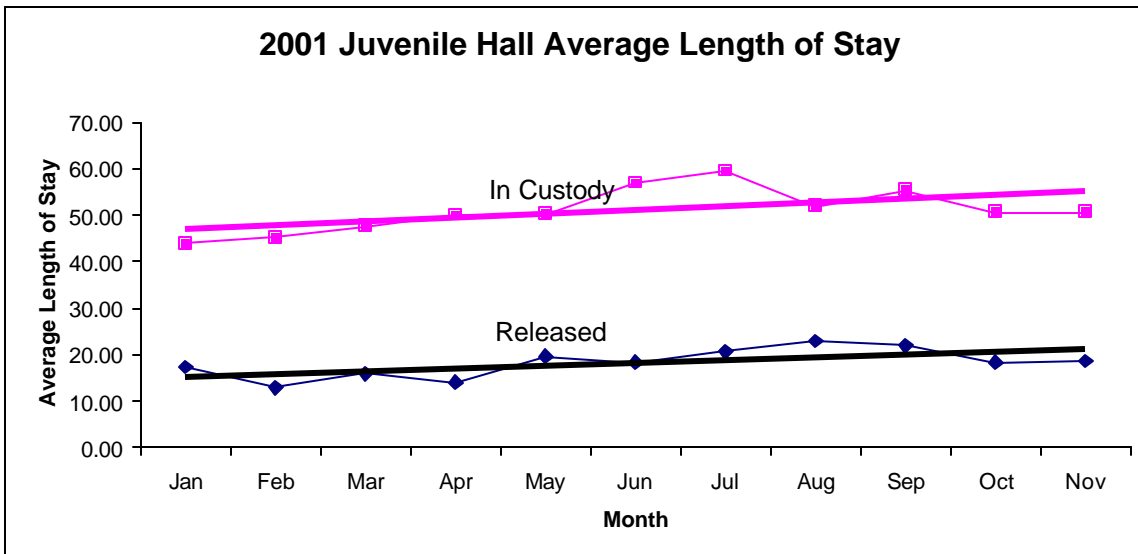


2002 Avg. Daily Pop.	Jan	Feb	Mar	Apr	May	Jun	Jul	Aug	Sep	Oct	Nov	Dec	Total
	113	96	113	103	102	100	97	104	96	116	108	95	104

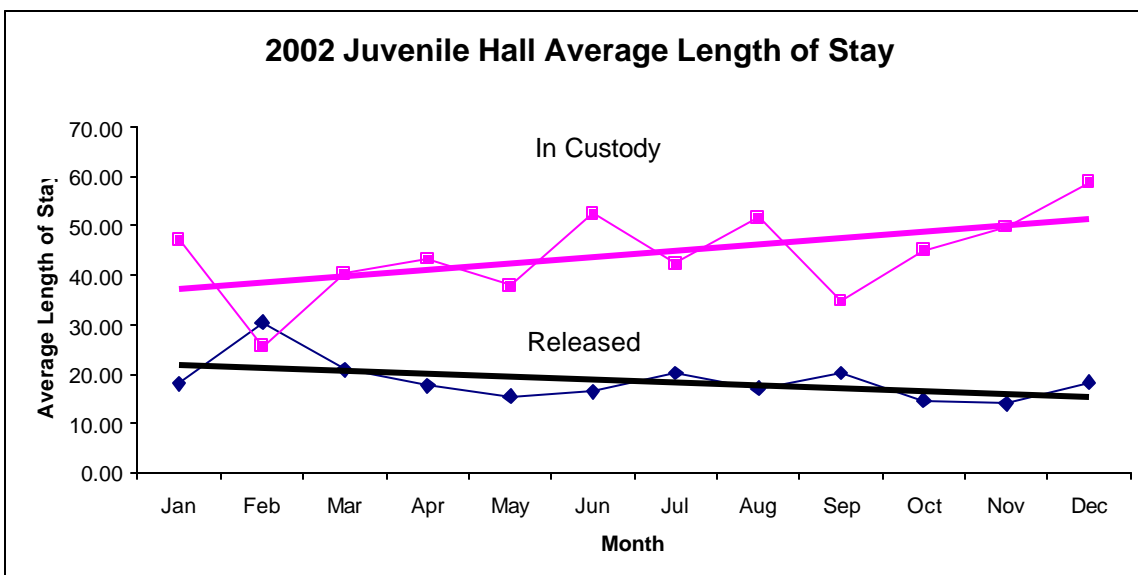


San Francisco Juvenile Probation
Juvenile Hall Average Length of Stay By Month
 (2001-2002)

2001 Avg. Length of Stay	Jan	Feb	Mar	Apr	May	Jun	Jul	Aug	Sep	Oct	Nov	Dec	Total
¹ Released	17.44	13.03	15.87	14.05	19.66	18.37	20.73	22.97	21.94	18.33	18.71	20.12	18.44
² In Custody	44.00	45.18	47.66	50.13	50.18	56.93	59.56	51.97	55.41	50.67	50.61	42.32	50.39



2002 Avg. Length of Stay	Jan	Feb	Mar	Apr	May	Jun	Jul	Aug	Sep	Oct	Nov	Dec	Total
¹ Released	18.05	30.44	20.88	17.65	15.50	16.45	20.22	17.15	20.16	14.67	14.03	18.30	18.63
² In Custody	47.30	25.63	40.35	43.29	37.86	52.57	42.41	51.77	34.82	45.11	49.85	58.85	44.15



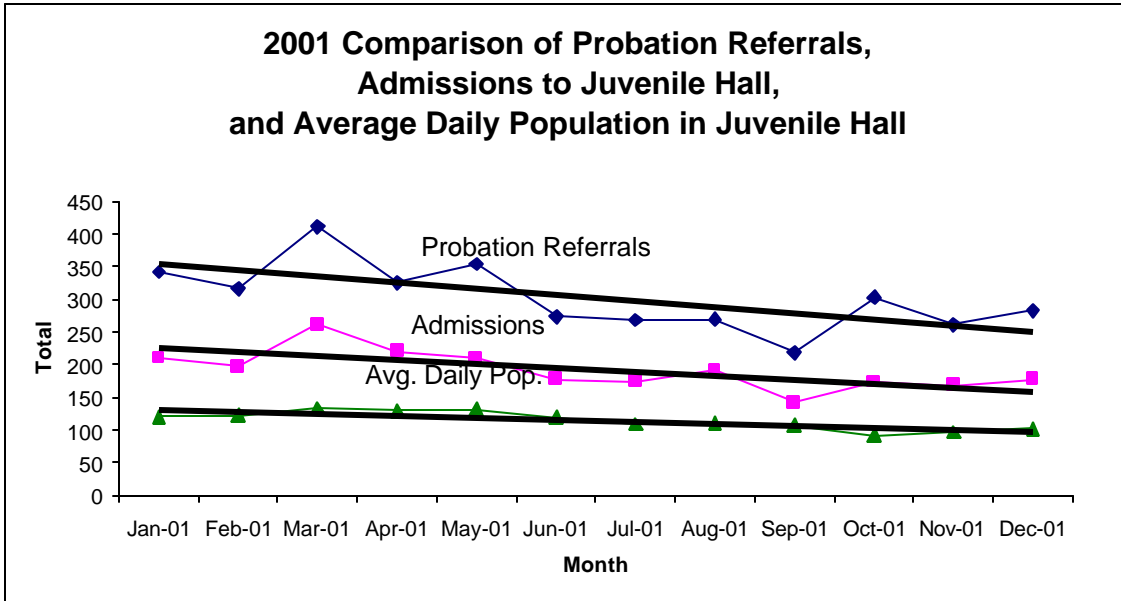
Notes: Less than one day of stay is calculated as one day.

¹ Length of stay is calculated according to release date for those who are released.

² For those still in custody, length of stay is calculated at the last day of the month.

San Francisco Juvenile Probation

	Jan-01	Feb-01	Mar-01	Apr-01	May-01	Jun-01	Jul-01	Aug-01	Sep-01	Oct-01	Nov-01	Dec-01
Probation Referrals	342	316	412	326	354	273	268	269	218	303	261	283
JH Admissions	210	197	262	220	209	177	174	191	142	173	168	178
JH Avg. Daily Pop.	120	122	134	130	132	119	109	110	107	92	97	102



	Jan-02	Feb-02	Mar-02	Apr-02	May-02	Jun-02	Jul-02	Aug-02	Sep-02	Oct-02	Nov-02	Dec-02
Probation Referrals	284	285	291	269	346	211	260	250	270	311	284	242
JH Admissions	192	160	181	185	213	140	177	172	179	206	183	164
JH Avg. Daily Pop.	113	96	113	103	102	100	97	104	96	116	108	95

