

City and County of San Francisco



Juvenile Probation Department

---

## **Monthly Report for March 2004**

Presented to the Juvenile Probation Commission

April 28<sup>th</sup>, 2004

# Table of Contents

---

## Section I Summary Reports

Juvenile Hall, Log Cabin Ranch Summary Statistics.....	1
Community Programs Summary Statistics .....	2
Probation Services Summary Statistics.....	4

## Section II Current Month General Detail

Probation Referrals, Juvenile Admissions And Average Daily Population .....	6
Juvenile Hall Admissions and Average Daily Population.....	7
Commitments to out-of-home placement.....	8
Commitments to California Youth Authority.....	9
Log Cabin Ranch Admissions and Average Daily Population.....	10
Probation Referrals .....	11
Juvenile Hall And Log Cabin Ranch Incident Report .....	12
Juvenile Hall And Log Cabin Ranch Grievances Report.....	13
Bay Area Resident Juvenile Hall Comparison .....	14
Juvenile Hall Admissions.....	15
Juvenile Hall Detainees by Detention Reason.....	16
Juvenile Hall Average Daily Population by Rated Capacity.....	17
Juvenile Hall Average Length of Stay .....	18

## Section III Demographics

Juvenile Hall Detainees by Sex and Race/Ethnic Origin.....	19
Juvenile Hall Detainees by Age .....	20
Juvenile Hall Detainees by Age and Sex.....	21
Juvenile Hall Detainees by Geographic Residence of Youth.....	22
Juvenile Hall Detainees by Race/Ethnic Origin and Sex.....	23

## **Section IV**

### **Historical Information**

2001-2003 Probation Referrals .....	24
2002-2003 Juvenile Hall Admissions .....	25
2002-2003 Juvenile Hall Average Daily Population.....	26
2002-2003 Juvenile Hall Average Length of Stay by Month.....	27



# **Section I**

# **Summary Reports**

## Summary Report for the Month of March 2004

<b>Juvenile Hall</b>	<i>February 2003</i>	<i>February 2004</i>	<i>March 2003</i>	<i>March 2004</i>	<i>YTD 2003</i>	<i>YTD 2004</i>
Admissions	158	180	175	189	478	561
Average Daily Population	93.49	101.93	90.5	103.45	90.14	101.17
Average Length of Stay (Releases)	22.16	10.58	15.97	21.86	18.90	15.49
Average Length of Stay (In Custody)	44.53	57.73	47.63	49.20	49.71	53.09
Releases	143	166	188	192	475	538
<b>Log Cabin Ranch</b>						
Admissions:						
First Time Commitments	3	3	3	1	8	6
Recommitments	0	0	0	0	0	0
<i>Total</i>	<b>3</b>	<b>3</b>	<b>3</b>	<b>1</b>	<b>8</b>	<b>6</b>
Releases:						
Graduated	4	2	1	3	7	7
Escape	0	0	0	0	0	0
Other releases	0	0	0	1	4	1
<i>Total</i>	<b>4</b>	<b>2</b>	<b>1</b>	<b>4</b>	<b>11</b>	<b>8</b>
Average Daily Population	27	19	27	19	26	19
<b>Grievances Filed</b>						
Juvenile Hall:						
B1	0	0	0	0	0	1
B2	0	2	0	0	0	8
B3	0	1	0	0	0	1
B4	5	1	1	0	6	1
B5	2	0	0	0	2	2
G2 (CO-ED)	2	0	1	0	3	2
<i>Total</i>	<b>9</b>	<b>4</b>	<b>2</b>	<b>0</b>	<b>11</b>	<b>15</b>
Log Cabin Ranch	<b>0</b>	<b>0</b>	<b>0</b>	<b>0</b>	<b>0</b>	<b>0</b>
<b>Incident Reports</b>						
Juvenile Hall	16	10	14	10	42	33
Log Cabin Ranch	0	0	1	0	1	0
<i>Total</i>	<b>16</b>	<b>10</b>	<b>15</b>	<b>10</b>	<b>43</b>	<b>33</b>

## Summary Report for the Month of March 2004

<b>Community Programs</b>	<i>Program Vacancies by Agency on March 2004</i>	<i>Active in program February 2003</i>	<i>Active in Program February 2004</i>	<i>Active in Program March 2003</i>	<i>Active in Program March 2004</i>
<b>IHBS Monthly Client Count</b>					
BayView Hunters Point Foundation	13	16	13	18	13
Chinatown Youth Center	0	10	13	10	13
Morrisania West, Inc.	0	11	12	11	12
Office of Samoan Affairs	2	9	9	6	9
Potrero Hill Neighborhood House	4	11	7	11	7
Instituto Familiar de La Raza	10	22	22	24	22
Vietnamese Youth Development Center	4	5	7	7	7
Brothers Against Guns	3	0	11	0	11
<i>Total</i>	<b>36</b>	<b>84</b>	<b>94</b>	<b>87</b>	<b>94</b>
<i>March 2004 Percent Program Utilization</i>	<b>73%</b>				
<i>March 2004 Percent Change from last report</i>	<b>0%</b>				

Summary Report for TANF and Girls Programs  
Month: February 2004

PROGRAM	ANNUAL GOAL	NUMBER SERVED
California Community Dispute Services: Youth Accountability Boards	40	42
CARECEN: Tattoo Removal and Case Management	45	33
Center for Young Women's Development: Girls Services	40	113
Community Works – Girls Diversion Program	24	18
Community Works – Girls Therapeutic Arts in Juvenile Hall	150	66
Community Works – ROOTS Support for Children of Incarcerated Parents	40	44
Edgewood Kinship Support Network	30	20
Family Restoration House: Life Skills	30	29
Girls 2000: Girls Services and Family Support Services	20	22
Instituto Familiar de la Raza – Intensive Case Management	10	8
Mission Neighborhood Center: Young Queens on the Rise – Girls Services	35	27
Performing Arts Workshop: Arts Education at Impact High School	30	30
SAGE: Girls Survivor Services	35	35
Samoan Community Development Center: Anger Management Classes	75	78
Special Services for Groups: Occupational Therapy Training Program	78	72
United Way/Girls Justice Initiative: Detention-based Case Management & Inside Mentoring Program	300 72	140
Urban Services YMCA: Bayview Beacon Truancy Support	50	16
YGCIC Focus Vocational Programs	55	23
YGCIC GED Plus	50	29
YWCA – CITS Girls Mentorship	24	19
YWCA – FITS Girls Services	40	22

## Summary Report for the Month of March 2004

<b>Probation Services</b>	<i>February 2004</i>	<i>March 2004</i>	<i>Year To Date 2004</i>
Probation Referrals	236	270	765
Petitions	78	101	267
Selected Court Dispositions:			
California Youth Authority	2	1	3
Log Cabin Ranch	3	0	3
Out of Home Placement	15	21	49
Other Probation	25	31	78
Violation of Probation Petitions Filed	5	20	37
California Youth Authority Monthly Count			
Institutions:			
Males	47	46	
Females	5	5	
<b>Total</b>	<b>52</b>	<b>51</b>	
Parole:			
Males	22	22	
Females	2	1	
<b>Total</b>	<b>24</b>	<b>23</b>	



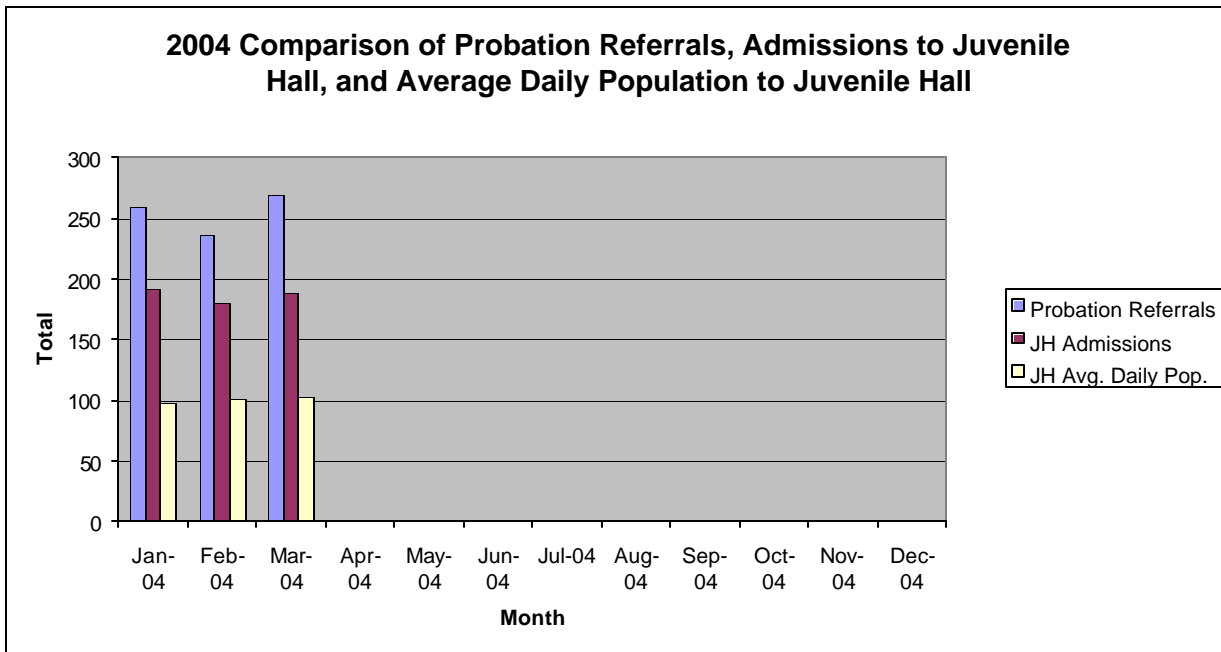
## Summary Report for the Month of March 2004

<b>Probation Services</b>			
<b>Caseload List</b>	February 2004	March 2004	March Average # Youth by PO
South Intake	243	242	48.40
North Intake	164	165	27.50
Prevention Diversion	180	179	19.89
Serious Offenders	108	106	17.67
Supervision	153	156	19.50
County Placement	25	21	21.00
Private Placement	181	187	17.00
Drug Court	25	25	25.00
Family Integrated Treatment Services	123	123	15.38
<i>Total</i>	<b>1202</b>	<b>1204</b>	<b>23.48</b>
<b>Special Services Unit</b>	New	Closed	Active at end of Month
Record Sealings	9	16	132
Stepparent Adoptions	1	5	50
Terminations	0	1	10
Marriage Consents	0	0	1
Custody Evaluations	0	0	0
	Entered	Completed	Active at end of Month
Community Service	14	7	1163
Street Law	17	13	4
		Referred	Completed at end of Month
COPS		9	6
Theft Awareness		33	27
Anger Management		19	0
Life Management Skills		2	2
Kids Turn Non-Violent Family Skills		8	6
Information, Record Checks, Research & Photo Copying Juvenile Records For:	February 2004	March 2004	Year to Date 2004
Job Corps, Probation Departments,			
Military, Law Enforcement,			
Misc., (letters, Memos, Forms, etc.)	114	149	389

**Section II**  
**Current Month**  
**General Detail**

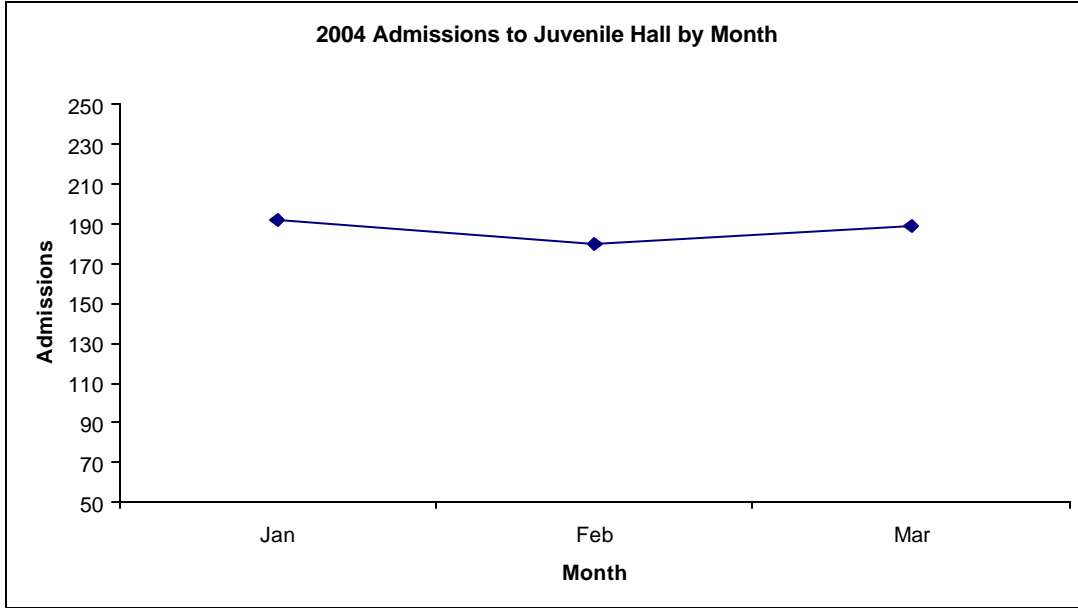
## San Francisco Juvenile Probation

	Jan-04	Feb-04	Mar-04	Apr-04	May-04	Jun-04	Jul-04	Aug-04	Sep-04	Oct-04	Nov-04	Dec-04
Probation Referrals	259	236	270									
JH Admissions	192	180	189									
JH Avg. Daily Pop.	98	101	103									

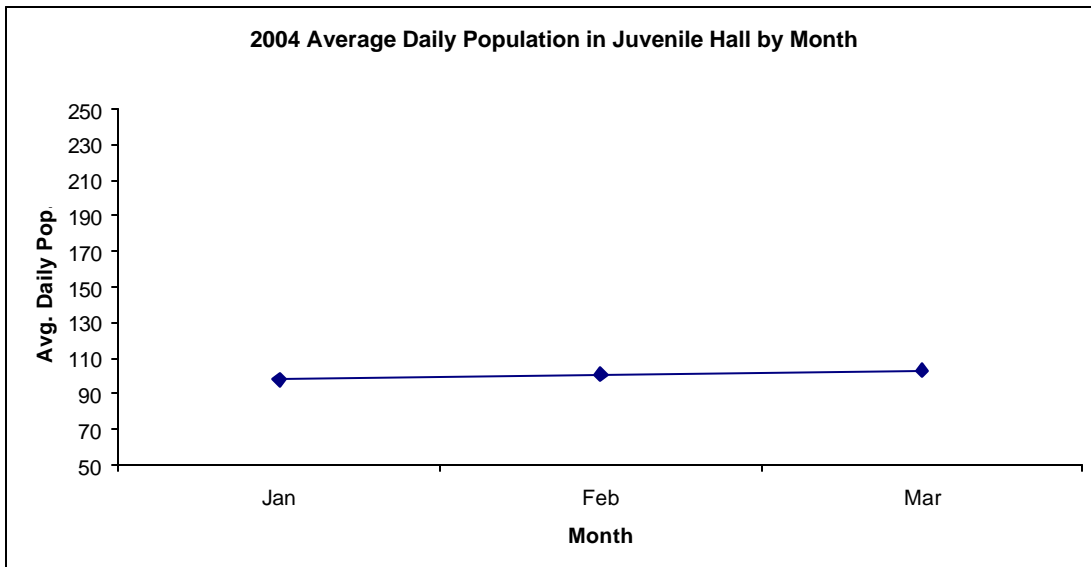


# San Francisco Juvenile Probation Admissions and Average Daily Population In Juvenile Hall (Calendar Year 2004)

Admissions	Jan	Feb	Mar	Apr	May	Jun	Jul	Aug	Sep	Oct	Nov	Dec	<b>Total</b>
2004	192	180	189										<b>561</b>



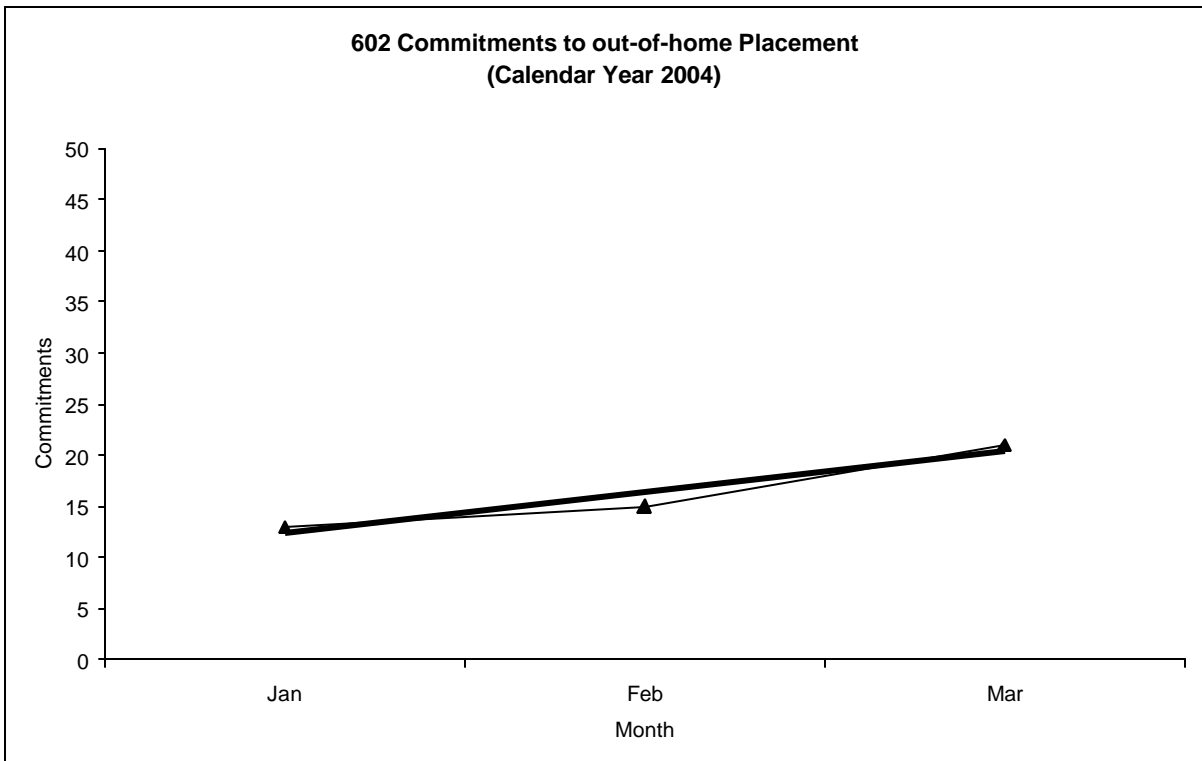
Avg. Daily Pop.	Jan	Feb	Mar	Apr	May	Jun	Jul	Aug	Sep	Oct	Nov	Dec	<b>Total</b>
2004	98	101	103										<b>101</b>



# Out-of-Home Placement<sup>1</sup>

## Commitments of 602's Calendar Year 2004

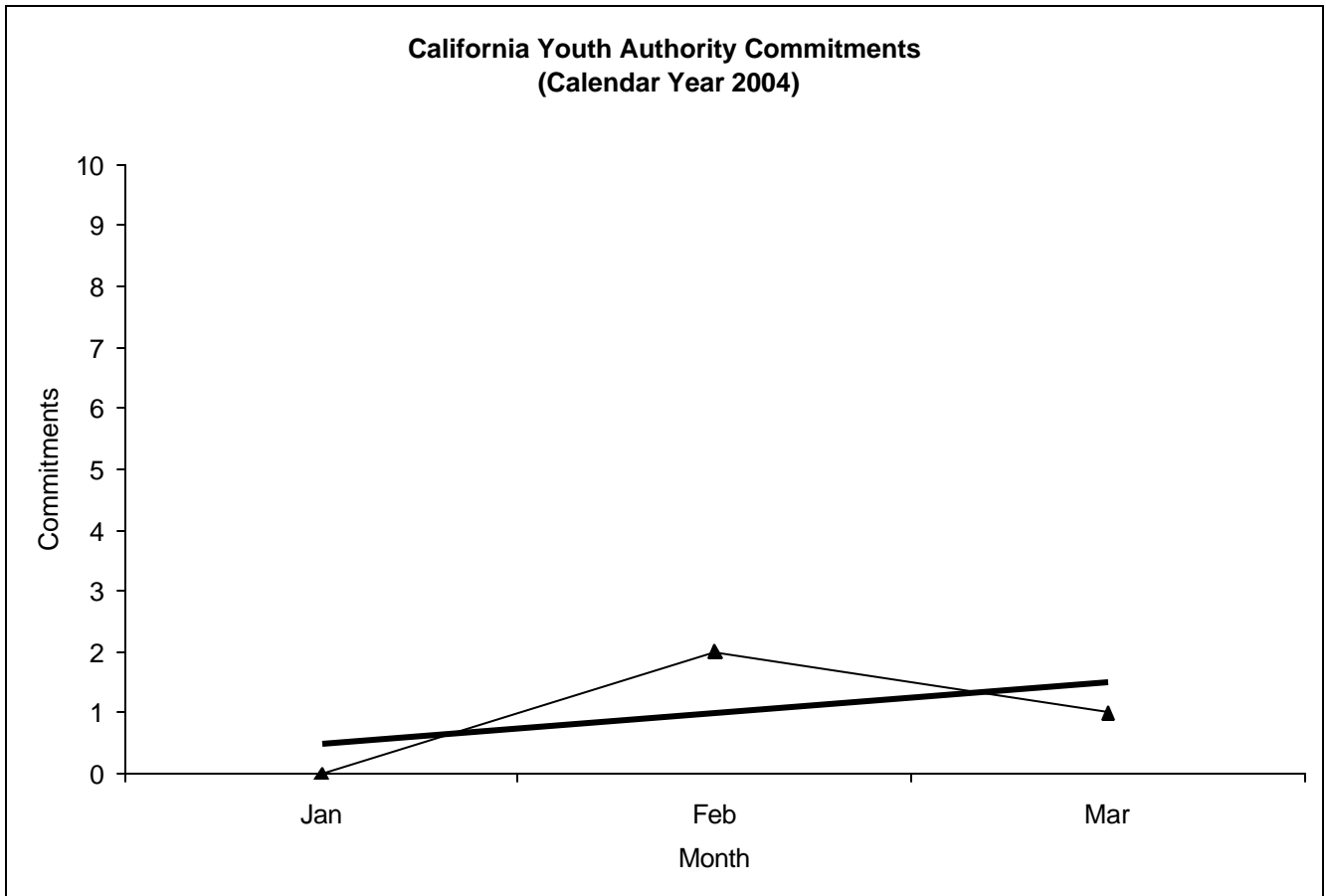
Commitments	Jan	Feb	Mar	Apr	May	Jun	Jul	Aug	Sep	Oct	Nov	Dec	Total
2004	13	15	21										49



<sup>1</sup> This report is based on 602 Commitments to out-of-home placements. If there is a 601 commitment, it will show as a footnote here. Figures are regularly updated to include reports from previous reporting periods.

# California Youth Authority Commitments (Calendar Year 2004)

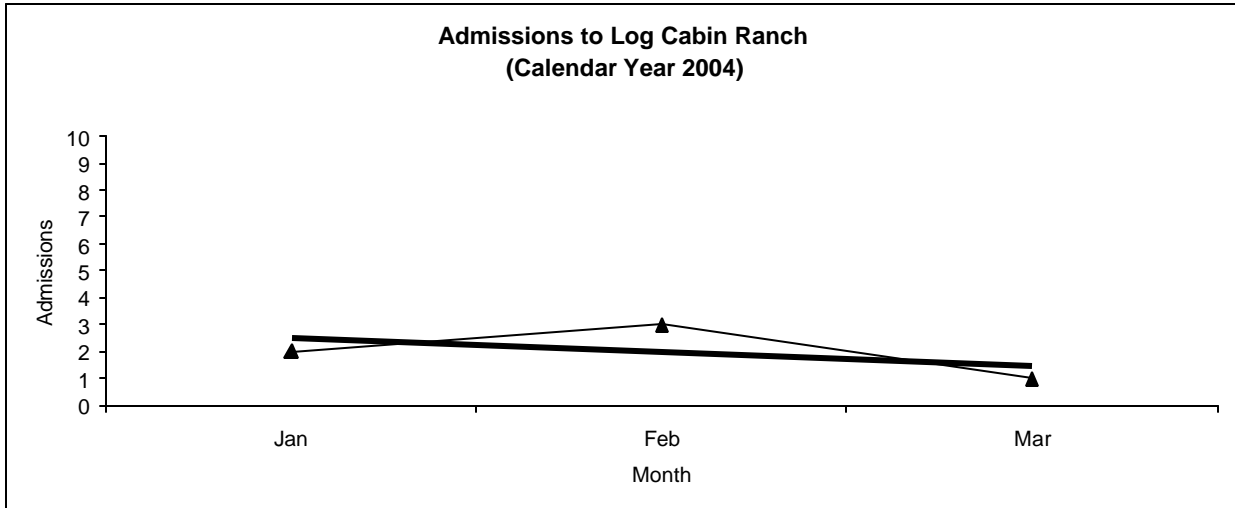
Commitments	Jan	Feb	Mar	Apr	May	Jun	Jul	Aug	Sep	Oct	Nov	Dec	Total
2004	0	2	1										3



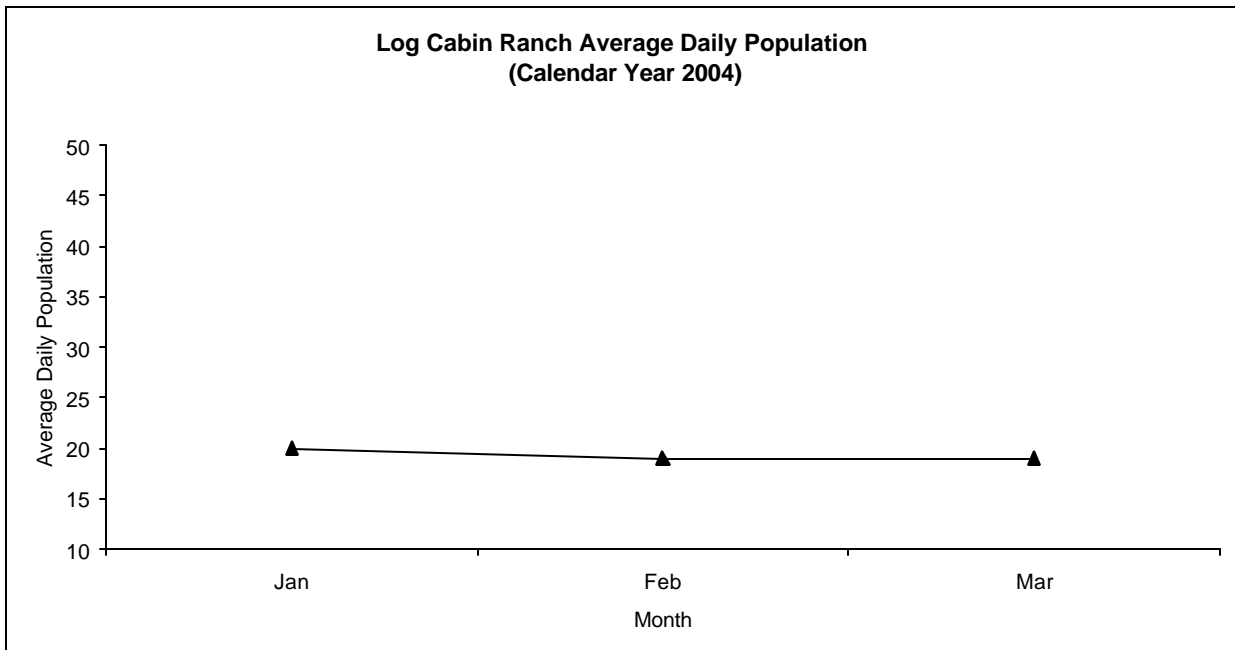
# Log Cabin Ranch

## Admissions and Average Daily Population (Calendar Year 2004)

<b>Admissions</b>	Jan	Feb	Mar	Apr	May	Jun	Jul	Aug	Sep	Oct	Nov	Dec	<b>Total</b>
2004	2	3	1										<b>6</b>



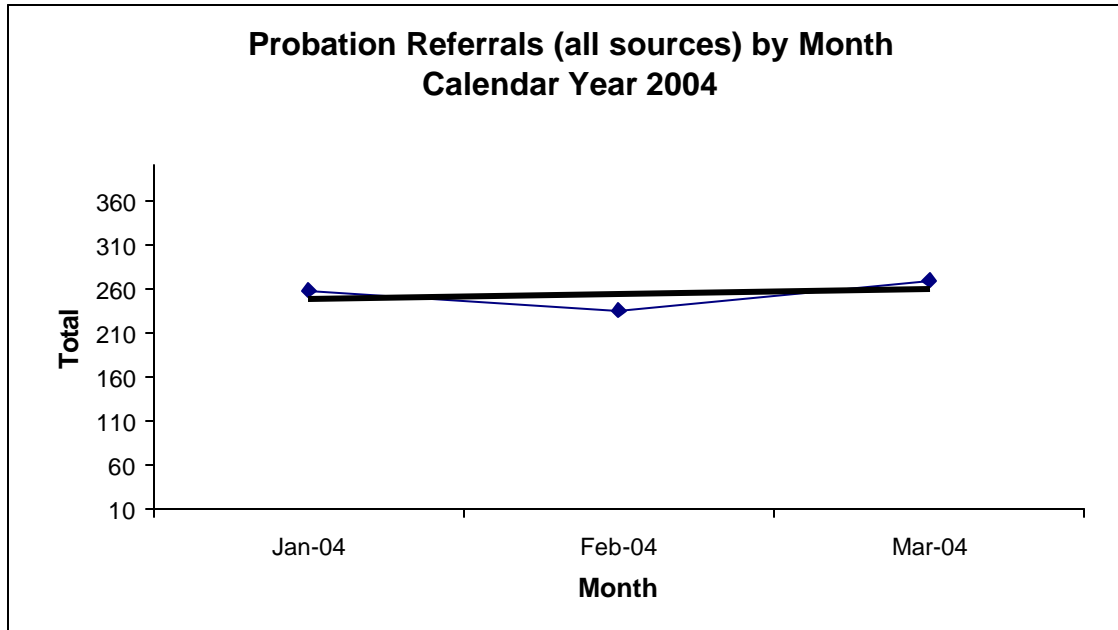
<b>Avg. Daily Pop.</b>	Jan	Feb	Mar	Apr	May	Jun	Jul	Aug	Sep	Oct	Nov	Dec	<b>Total</b>
2004	20	19	19										<b>19.33</b>



# Probation Referrals by Month Calendar Year 2004

## Probation Referrals (all sources) by Month (602 W&I)

Jan-04	259
Feb-04	236
Mar-04	270
Apr-04	
May-04	
Jun-04	
Jul-04	
Aug-04	
Sep-04	
Oct-04	
Nov-04	
Dec-04	





SAN FRANCISCO JUVENILE PROBATION DEPARTMENT  
 MONTHLY INCIDENT REPORT FORM  
 MONTH/YEAR: MARCH 2004

<b>Log Cabin Ranch</b>	Battery on Staff	Injury to Staff due to Restraint of Minor	Fight	Battery Youth on Youth	Attempted Escape	AWOL	Attempted Suicide	Serious Contraband (Weapon Illegal Drug)
	<b>0</b>	<b>0</b>	<b>0</b>	<b>0</b>	<b>0</b>	<b>0</b>	<b>0</b>	<b>0</b>
	Battery on Staff with Injury	Fire	Fight with Injury	Battery Youth on Youth with Injury	Escape	Death	Suicide	Major Property Destruction
<b>0</b>	<b>0</b>	<b>0</b>	<b>0</b>	<b>0</b>	<b>0</b>	<b>0</b>	<b>0</b>	<b>0</b>
<b>Juvenile Hall</b>	Battery on Staff	Injury to Staff due to Restraint of Minor	Fight	Battery Youth on Youth	Attempted Escape	AWOL	Attempted Suicide	Serious Contraband (Weapon Illegal Drug)
	<b>0</b>	<b>0</b>	<b>3</b>	<b>2</b>	<b>0</b>	<b>0</b>	<b>1</b>	<b>0</b>
	Battery on Staff with Injury	Fire	Fight with Injury	Battery Youth on Youth with Injury	Escape	Death	Suicide	Major Property Destruction
<b>2</b>	<b>0</b>	<b>0</b>	<b>2</b>	<b>0</b>	<b>0</b>	<b>0</b>	<b>0</b>	<b>0</b>

## Grievances Filed February 2004

### San Francisco Juvenile Probation Department

#### Juvenile Hall

*During the month of March, there was zero (0) grievance submitted under **Juvenile Title 15 & 24 Minimum Standards for Juvenile Facilities Guidelines 2001 Revisions**. All documents have been logged as grievances. In addition, all the grievances have been referred to the appropriate departments and staff. The grievances would have been resolved via exchange of ideas between supervisory staff, residents, and the office of the Ombudsman.*



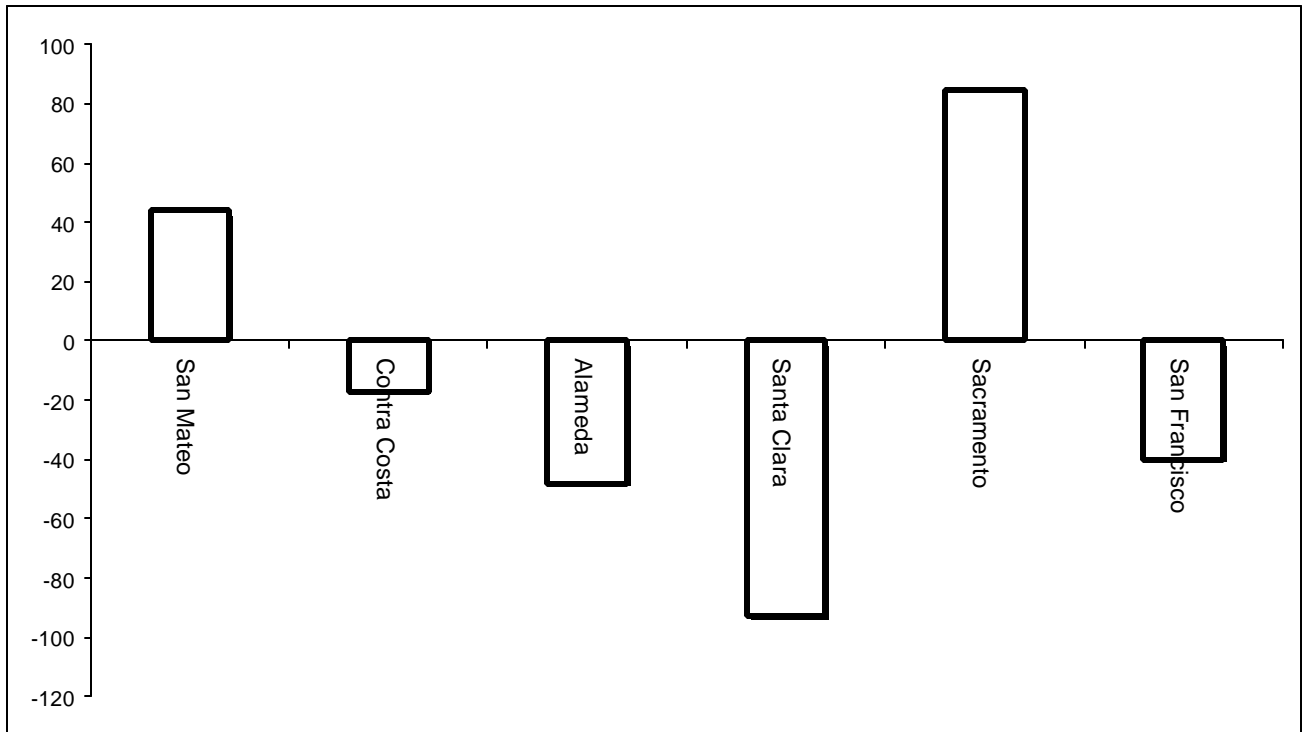
**Grievances Filed March 2004**  
**San Francisco Probation Department**  
**From the office of the Ombudsman.**

<i>Area of Infraction</i>	<i>Title 15 Article/Section</i>	<i>B1</i>	<i>Girls Unit</i>	<i>B2</i>	<i>B3</i>	<i>B4</i>	<i>B5</i>	<i>TOTAL</i>
<b>Food</b>	<b>9.1460</b>	<b>0</b>	<b>0</b>	<b>0</b>	<b>0</b>	<b>0</b>	<b>0</b>	<b>0</b>
<b>Personal Hygiene</b>	<b>10.1486</b>	<b>0</b>	<b>0</b>	<b>0</b>	<b>0</b>	<b>0</b>	<b>0</b>	<b>0</b>
<b>Programs and Activities</b>	<b>6.1371</b>	<b>0</b>	<b>0</b>	<b>0</b>	<b>0</b>	<b>0</b>	<b>0</b>	<b>0</b>
<b>Discipline Process</b>	<b>7.1391</b>	<b>0</b>	<b>0</b>	<b>0</b>	<b>0</b>	<b>0</b>	<b>0</b>	<b>0</b>
<b>Total</b>		<b>0</b>	<b>0</b>	<b>0</b>	<b>0</b>	<b>0</b>	<b>0</b>	<b>0</b>

#### Log Cabin Ranch

<b>Type</b>	<b>Log Cabin Ranch</b>
Food/Snacks	0
Laundry	0
Personal Property	0
Phone Calls	0
Procedures	0
Head Call	0
Discipline	0
Complaints vs. Staff	0
Cottage Change	0
Medical	0
School	0
Probation	0
Miscellaneous	0
<b>Total</b>	<b>0</b>

Bay Area Resident Juvenile Hall Comparison  
Over/Under Capacity  
on April 2nd, 2004

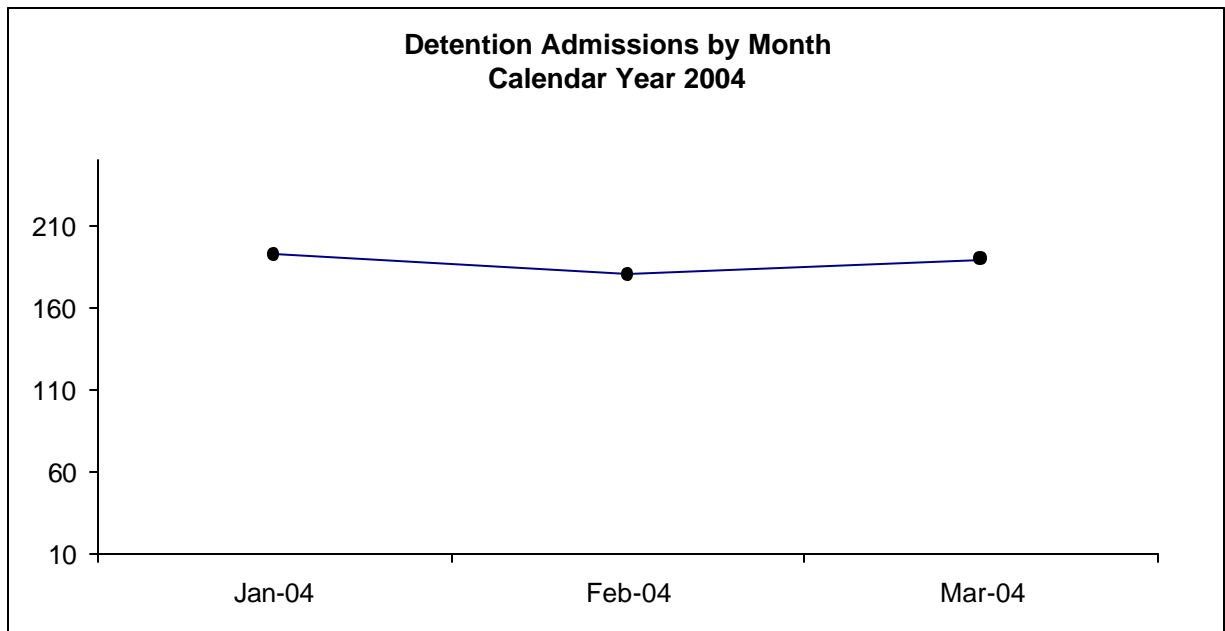


	Rated Capacity	Actual	Over/Under Capacity
San Mateo	130	174	44
Contra Costa	160	143	-17
Alameda	288	240	-48
Santa Clara	329	236	-93
Sacramento	256	341	85
San Francisco	132	92	-40

# Juvenile Hall Admissions by Month Calendar Year 2004

## Detention Admissions by Month

Jan-04	192
Feb-04	180
Mar-04	189
Apr-04	
May-04	
Jun-04	
Jul-04	
Aug-04	
Sep-04	
Oct-04	
Nov-04	
Dec-04	

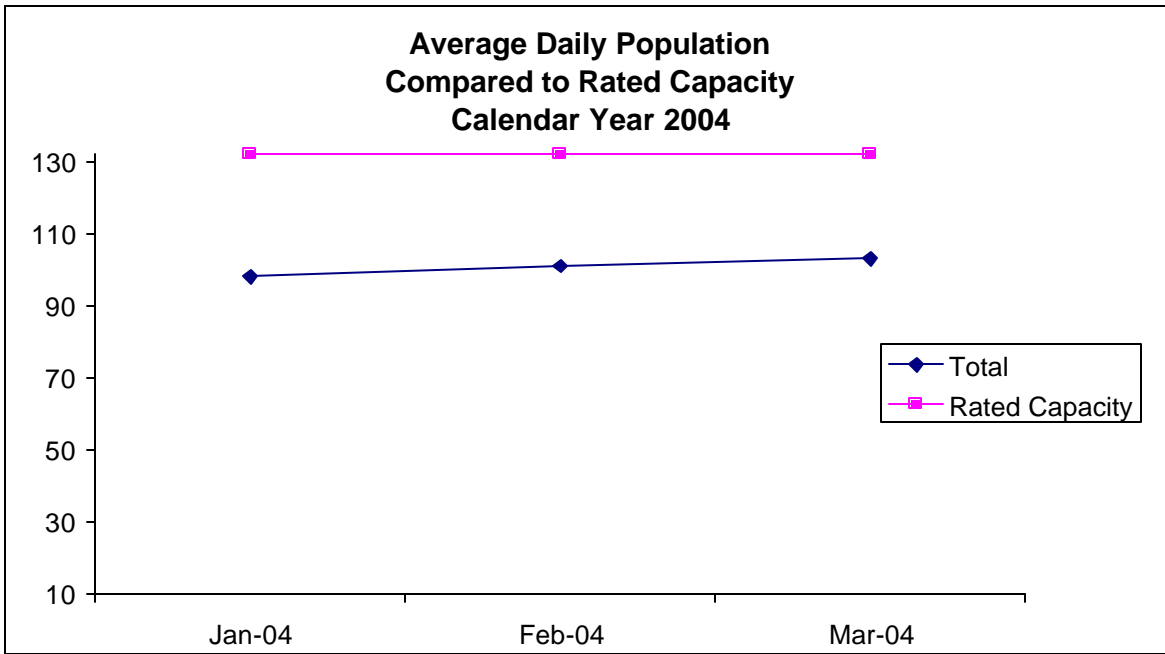


**Characteristics of Juvenile Hall Detainees on March 31<sup>st</sup>, 2004  
Using CJIS Code From the Department of Justice**

Detention Reason	Offense Code	MFI	Count	%
MURDER	187 (A) PC	F	4	3.85%
ATTEMPTED MURDER:SECOND DEGREE ON PEACE OFFICER	664 /187 (A) PC	F	6	5.77%
ORAL COPULATION IN CONCERT W/FORCE/ETC	288 A (D)(1) PC	F	4	3.85%
LEWD AND LASCIVIOUS ACTS WITH CHILD UNDER 14 W/FORCE/ETC	288 (B)(1) PC	F	2	1.92%
SEXUAL PENETRATION WITH FORCE/ETC	289 (A)(1) PC	F	1	0.96%
CARJACKING	215 PC	F	1	0.96%
ROBBERY	212.5 PC	F	1	0.96%
ROBBERY:FIRST DEGREE:CAB/ETC/INHABITED DWELLING	212.5(A) PC	F	1	0.96%
ASSAULT W/DEADLY WEAPON ON TRANSPORTATION PERSONNEL/ETC	245.2 PC	F	1	0.96%
TRANSPORT/SELL NARCOTIC/CONTROLLED SUBSTANCE	11352 (A) HS	F	2	1.92%
POSSESS/PURCHASE COCAINE BASE FOR SALE	11351.5 HS	F	2	1.92%
BURGLARY	459 PC	F	4	3.85%
BURGLARY:FIRST DEGREE	460 (A) PC	F	1	0.96%
ROBBERY:SECOND DEGREE	212.5(C) PC	F	11	10.58%
SELL/FURNISH/ETC MARIJUANA/HASHISH	11360 (A) HS	F	2	1.92%
ASSAULT:DEADLY WEAPON OR FORCE:POSSIBLE GREAT BODILY INJ	245 (A) PC	F	3	2.88%
FORCE OR ADW NOT FIREARM:GBI LIKELY	245 (A)(1) PC	F	2	1.92%
BATTERY W/SERIOUS BODILY INJURY	243 (D) PC	F	1	0.96%
POSSESS NARCOTIC CONTROLLED SUBSTANCE	11350 (A) HS	F	2	1.92%
FELON/ADDICT/ETC POSSESS FIREARM	12021 (A)(1) PC	F	1	0.96%
CARRY CONCEALED WEAPON IN VEHICLE W/PRIOR FELONY CONVICTION	12025 (A)(1) PC	F	1	0.96%
CARRY CONCEALED WEAPON WHILE ENGAGED IN CRIMINAL STREET GANG	12025 (B) PC	F	1	0.96%
FALSE IMPRISONMENT WITH VIOLENCE/FRAUD/DECEIT/ETC	237 (A) PC	F	1	0.96%
THREATEN CRIME W/INTENT TO TERRORIZE	422 PC	F	1	0.96%
TAKE VEHICLE W/O OWNER'S CONSENT/VEHICLE THEFT	10851 (A) VC	F	4	3.85%
RECEIVE/ETC KNOWN STOLEN PROPERTY	496 (A) PC	F	1	0.96%
POSSESS CONTROLLED SUBSTANCE	11377 (A) HS	F	1	0.96%
ACCESSORY	32 PC	F	1	0.96%
VANDALISM:DAMAGE PROPERTY	594 (A)(2) PC	F	1	0.96%
OBSTRUCT/RESIST/ETC PUBLIC/PEACE OFFICER/EMERGENCY MED TECH	148 (A)(1) PC	M	1	0.96%
CAUSING FIRE OF PROPERTY	452 (D) PC	M	1	0.96%
DISORDERLY CONDUCT:PROSTITUTION	647 (B) PC	M	2	1.92%
FALSE IDENTIFICATION TO SPECIFIC PEACE OFFICERS	148.9(A) PC	M	1	0.96%
FAIL TO OBEY ORDER OF JUVENILE COURT 602 WI	777 (A)(2) WI	M	6	5.77%
CHANGE OF PLACEMENT/PLACEMENT FAILURE	737 WI	M	9	8.65%
COURT ORDER 602	CTORD 602 XX	X	4	3.85%
LCR MEDICAL	LCR MED XX	X	1	0.96%
VIOLATION(S) OF HOME SUPERVISION CONDITION	628.1 WI	M	5	4.81%
WARRANT 602	WRNT602 XX	X	10	9.62%
	<b>Total</b>		<b>104</b>	<b>100.00%</b>

**Average Daily Population  
By Rated Capacity  
Calendar Year 2004**

	<b>Total</b>	<b>Rated Capacity</b>
<b>Jan-04</b>	98	132
<b>Feb-04</b>	101	132
<b>Mar-04</b>	103	132
<b>Apr-04</b>		132
<b>May-04</b>		132
<b>Jun-04</b>		132
<b>Jul-04</b>		132
<b>Aug-04</b>		132
<b>Sep-04</b>		132
<b>Oct-04</b>		132
<b>Nov-04</b>		132
<b>Dec-04</b>		132



## Juvenile Hall Average Length of Stay

For the Month of March 2004

### <sup>1</sup>Released

<b>Range of Days</b>	<i>1-10 days</i>	<i>11-20 days</i>	<i>21-30 days</i>	<i>30 or more days</i>	<b>Total</b>
# of Youth Released	134	17	13	28	192
% of Population	71.30%	8.70%	3.80%	16.30%	100%
# of Days	415	236	305	3242	4198
% of Total Days	9.89%	5.62%	7.27%	77.23%	100%
Average Length of Stay	3.10	13.88	23.46	115.79	21.86

### <sup>2</sup>In Custody

<b>Range of Days</b>	<i>1-10 days</i>	<i>11-20 days</i>	<i>21-30 days</i>	<i>30 or more days</i>	<b>Total</b>
# of Youth Detained	29	15	14	46	104
% of Population	38.60%	18.10%	12.60%	30.70%	100%
# of Days	141	242	361	4373	5117
% of Total Days	2.76%	4.73%	7.05%	85.46%	100%
Average Length of Stay	4.86	16.13	25.79	95.07	49.20

Notes: Less than one day of stay is calculated as one day.

<sup>1</sup>Length of stay is calculated according to release date for those who are released.

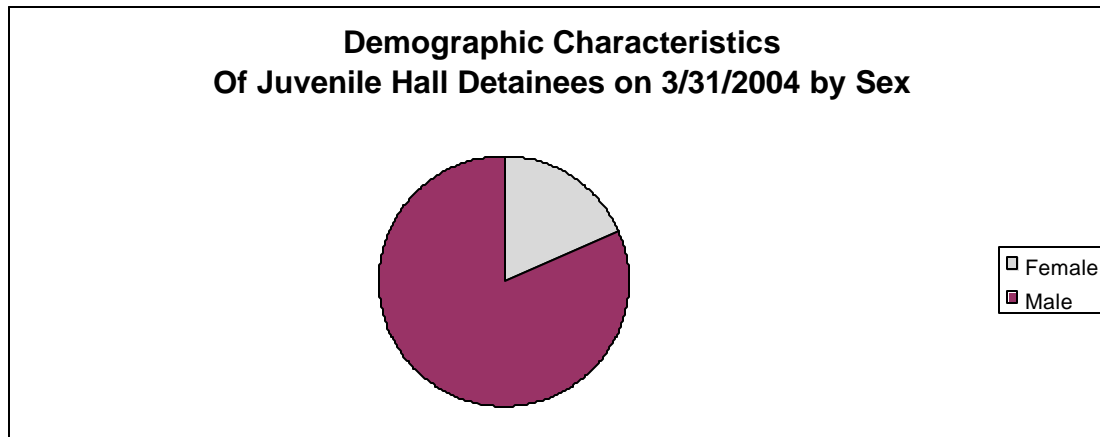
<sup>2</sup>For those still in custody, length of stay is calculated at the last day of the month.

# **Section III**

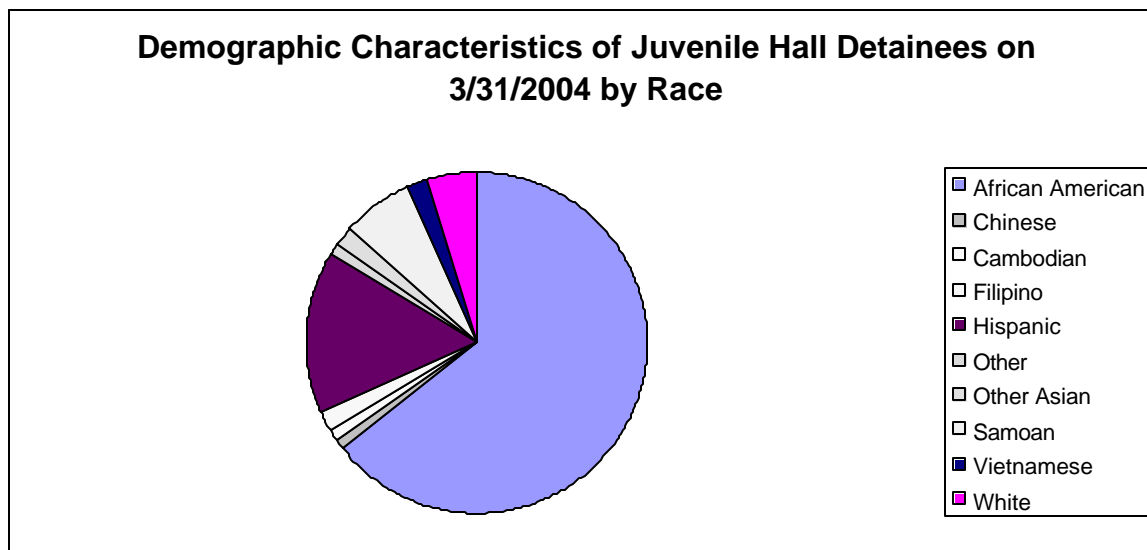
## **Demographics**



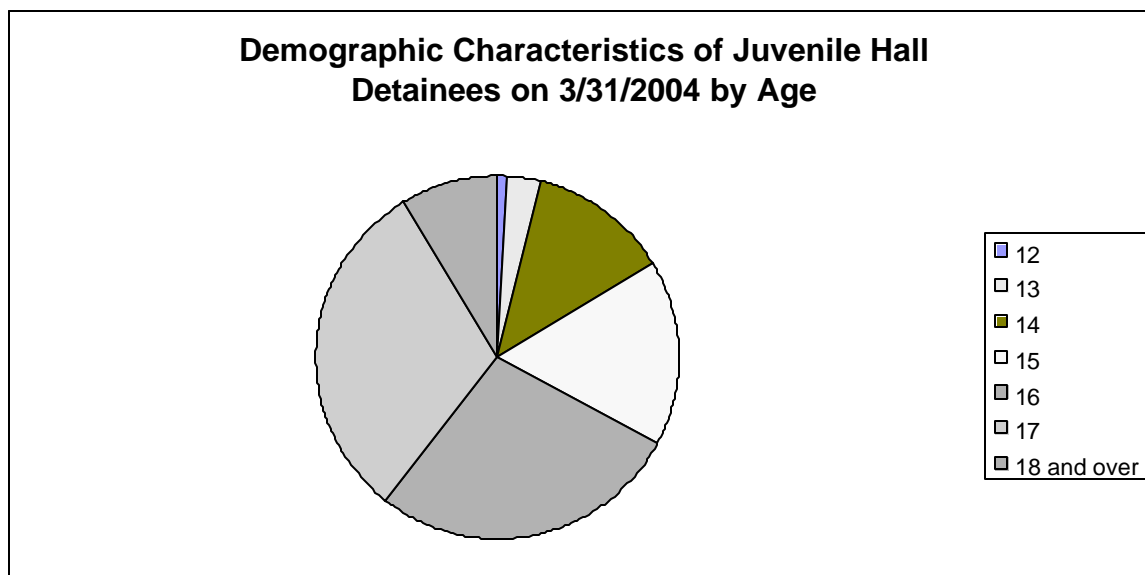
Sex	Frequency	Percent
Female	19	18.27%
Male	85	81.73%
<b>Total</b>	<b>104</b>	<b>100.00%</b>



Race/Ethnic Origin	Frequency	Percent
African American	67	64.42%
Chinese	1	0.96%
Cambodian	1	0.96%
Filipino	2	1.92%
Hispanic	16	15.38%
Other	1	0.96%
Other Asian	2	1.92%
Samoan	7	6.73%
Vietnamese	2	1.92%
White	5	4.81%
<b>Total</b>	<b>104</b>	<b>100.00%</b>

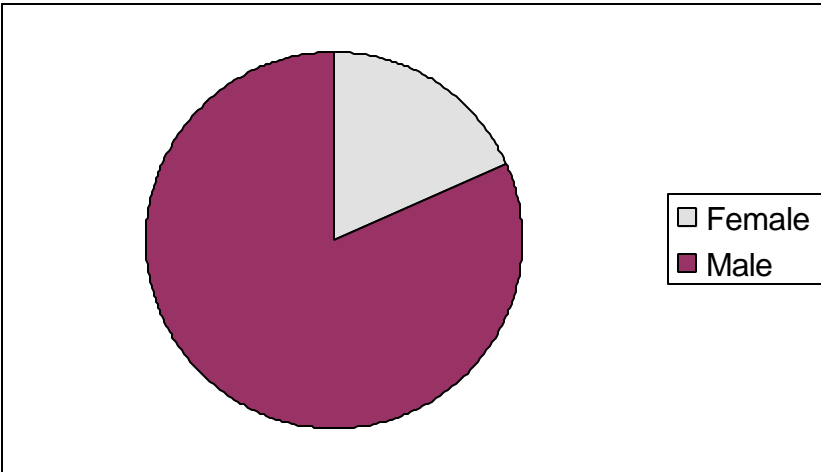


Age	Frequency	Percent
12	1	0.96%
13	3	2.88%
14	13	12.50%
15	17	16.35%
16	29	27.88%
17	32	30.77%
18 and over	9	8.65%
<b>Total</b>	<b>104</b>	<b>100.00%</b>



Demographic Characteristics of Juvenile Hall Detainees  
on 3/31/2004  
Age by Sex

Age	Female	Male	Total	
12	0	1	1	0.96%
13	0	3	3	2.88%
14	2	11	13	12.50%
15	7	10	17	16.35%
16	4	25	29	27.88%
17	4	28	32	30.77%
18 and over	2	7	9	8.65%
<b>Total</b>	<b>19</b>	<b>85</b>	<b>104</b>	<b>100.00%</b>
	<b>18.27%</b>	<b>81.73%</b>	<b>100.00%</b>	



Demographic Characteristics  
Of Juvenile Hall Detainees on March 31<sup>st</sup>, 2004

---

<b>Geographic Residence of Youth</b>	Frequency	Percent
Richmond	2	1.9
Marina	1	1.0
Western Addition	14	13.5
South of Market/Tenderloin	4	3.8
Sunset	3	2.9
Haight Ashbury/Castro	2	1.9
Inner Mission	4	3.8
Potrero	3	2.9
Parkside	2	1.9
Ingleside (West of Twin Peaks)	9	8.7
Outer Mission	18	17.3
Bayview	25	24.0
Non-San Francisco and Unavailable*	17	16.3
	-----	-----
Total	104	100.0

<b>*Non-San Francisco and Unavailable</b>	Frequency	Percent
ANZA	1	5.9
DALY CITY	2	11.8
FRESNO	2	11.8
LAKEPORT	1	5.9
MARTINEZ	1	5.9
NAPA	1	5.9
OAKLAND	3	17.6
SACRAMENTO	1	5.9
SAN JOSE	1	5.9
STOCKTON	1	5.9
UNAVAILABLE	3	17.6
	-----	-----
Total	17	100.0

Demographic Characteristics  
Of Juvenile Hall Detainees on March 31<sup>st</sup>, 2004

---

**Race/Ethnic Origin by Gender**

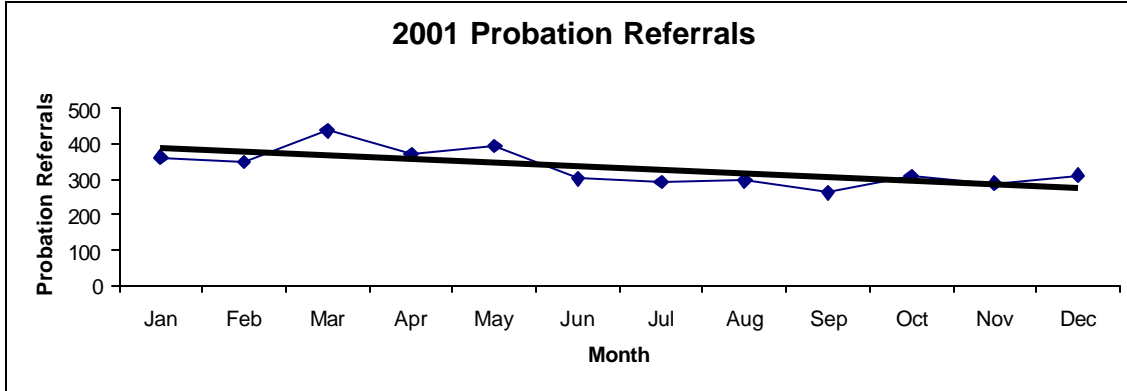
RACE	Count	SEX		Row Total
		Female F	Male M	
OTHER ASIAN			2	2 1.9
AFRICAN AMERICAN	15	52	67	64.4
CHINESE			1	1 1.0
CAMBODIAN			1	1 1.0
FILIPINO	1	1	2	1.9
HISPANIC	2	14	16	15.4
OTHER			1	1 1.0
SAMOAN			7	7 6.7
VIETNAMESE	1	1	2	1.9
WHITE			5	5 4.8
Column Total	19 18.3	85 81.7	104 100.0	

# **Section IV**

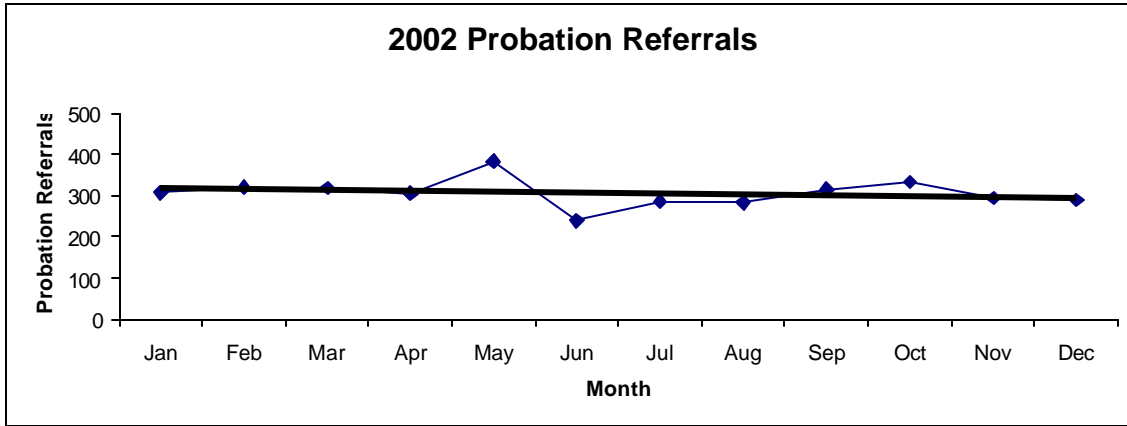
## **Historical Information**

San Francisco Juvenile Probation  
**Probation Referrals (all sources) By Month**  
 (2001-2003)

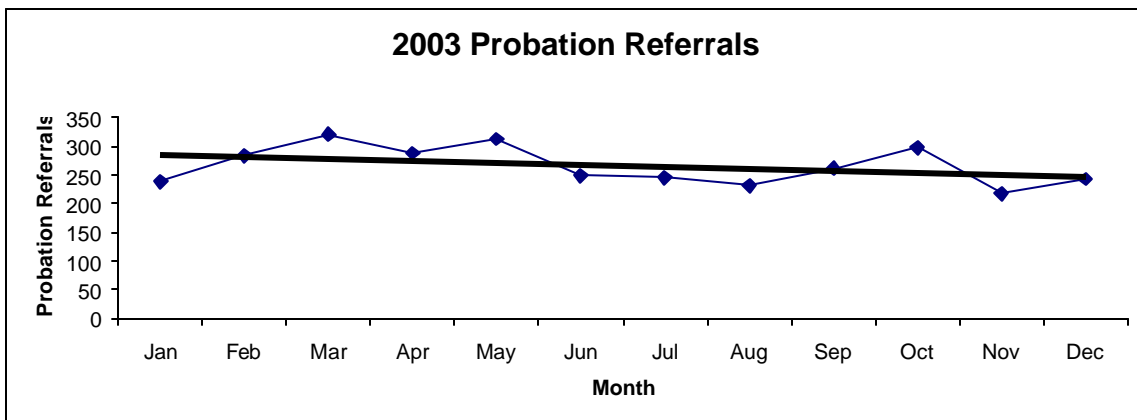
2001 Probation Referrals	Jan	Feb	Mar	Apr	May	Jun	Jul	Aug	Sep	Oct	Nov	Dec	Total
	361	348	437	370	394	301	292	296	262	309	287	311	<b>3968</b>



2002 Probation Referrals	Jan	Feb	Mar	Apr	May	Jun	Jul	Aug	Sep	Oct	Nov	Dec	Total
	308	320	318	305	384	240	286	283	315	333	294	289	<b>3675</b>

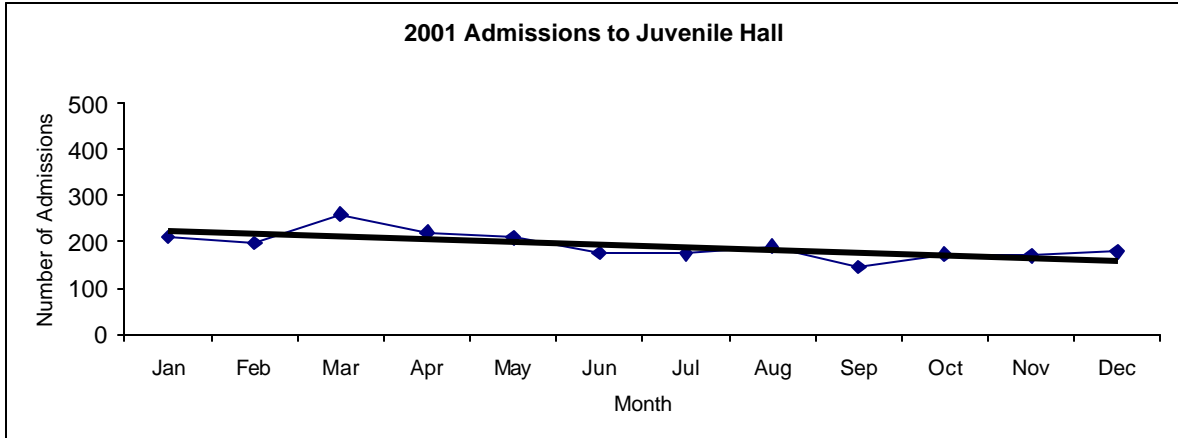


2003 Probation Referrals	Jan	Feb	Mar	Apr	May	Jun	Jul	Aug	Sep	Oct	Nov	Dec	Total
	238	283	320	288	313	248	245	231	261	297	218	243	<b>3185</b>

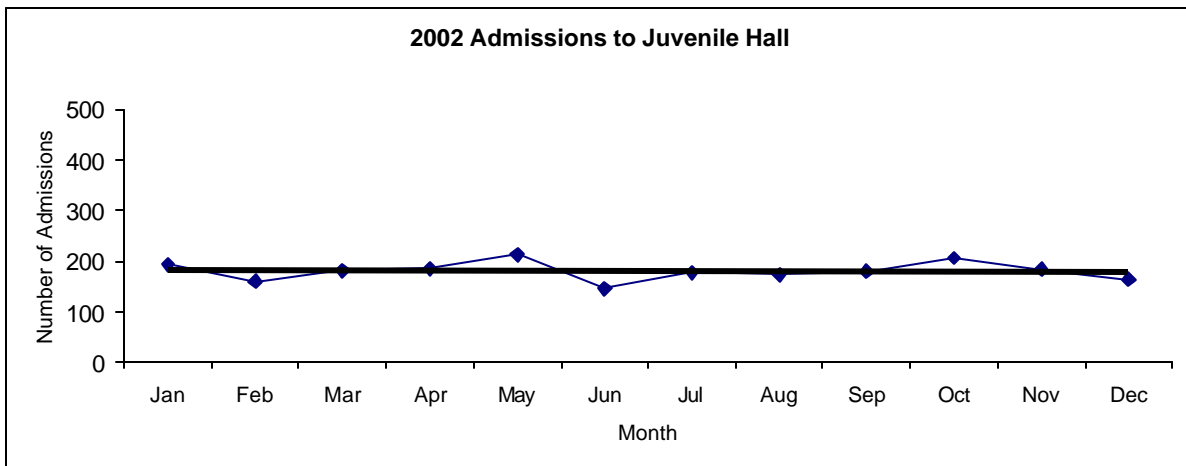


San Francisco Juvenile Probation  
**Juvenile Hall Admissions By Month**  
 (Calendar Years 2001-2003)

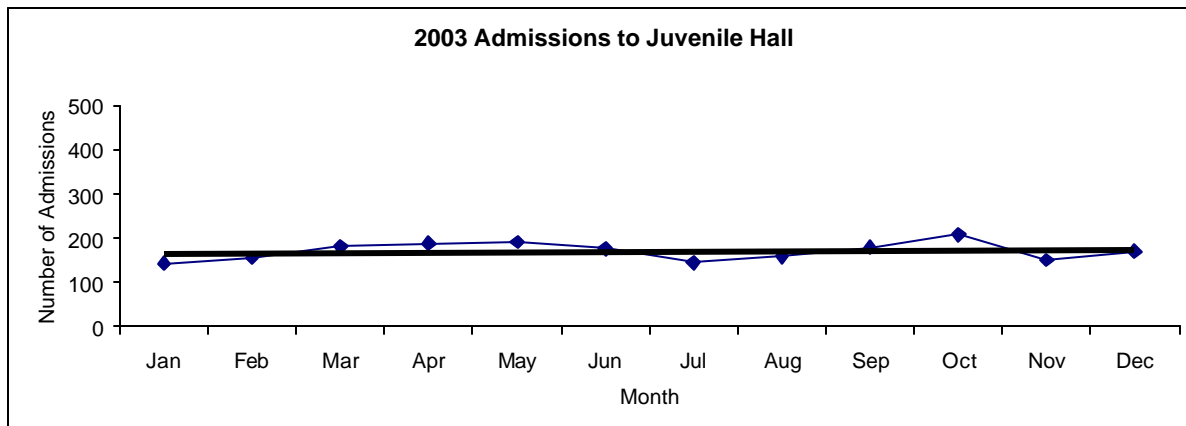
2001 Admissions	Jan	Feb	Mar	Apr	May	Jun	Jul	Aug	Sep	Oct	Nov	Dec	Total
	210	197	260	220	209	176	174	190	145	173	170	178	<b>2302</b>



2002 Admissions	Jan	Feb	Mar	Apr	May	Jun	Jul	Aug	Sep	Oct	Nov	Dec	Total
	193	160	181	185	213	145	177	173	179	206	183	164	<b>2159</b>



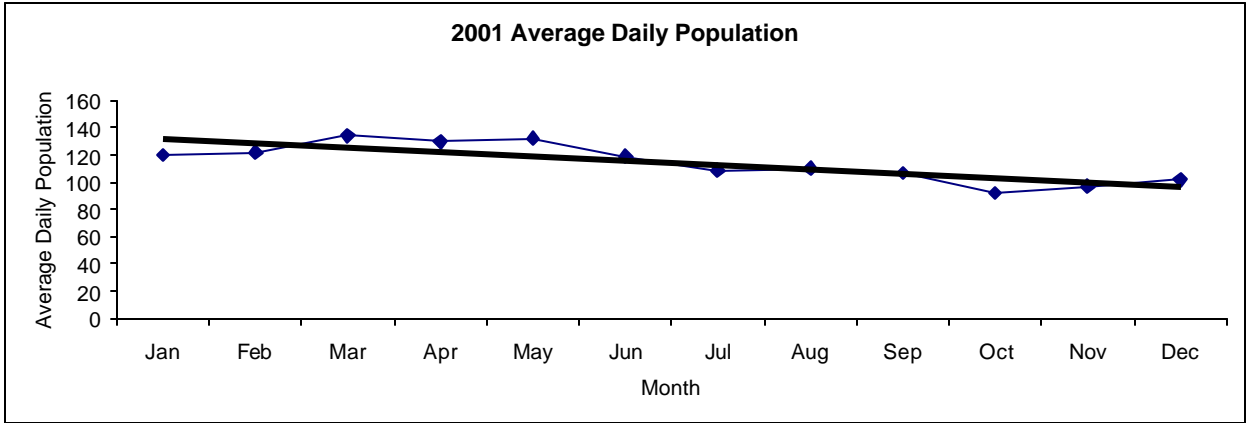
2003 Admissions	Jan	Feb	Mar	Apr	May	Jun	Jul	Aug	Sep	Oct	Nov	Dec	Total
	144	156	181	189	191	176	145	158	179	208	151	170	<b>2048</b>



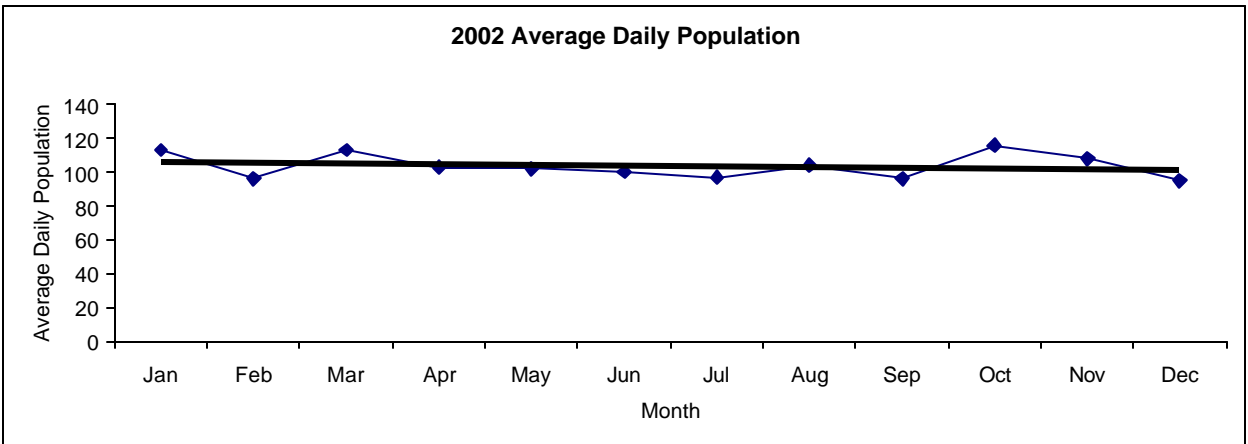


San Francisco Juvenile Probation  
**Juvenile Hall Average Daily Population By Month**  
 (Calendar Years 2001-2003)

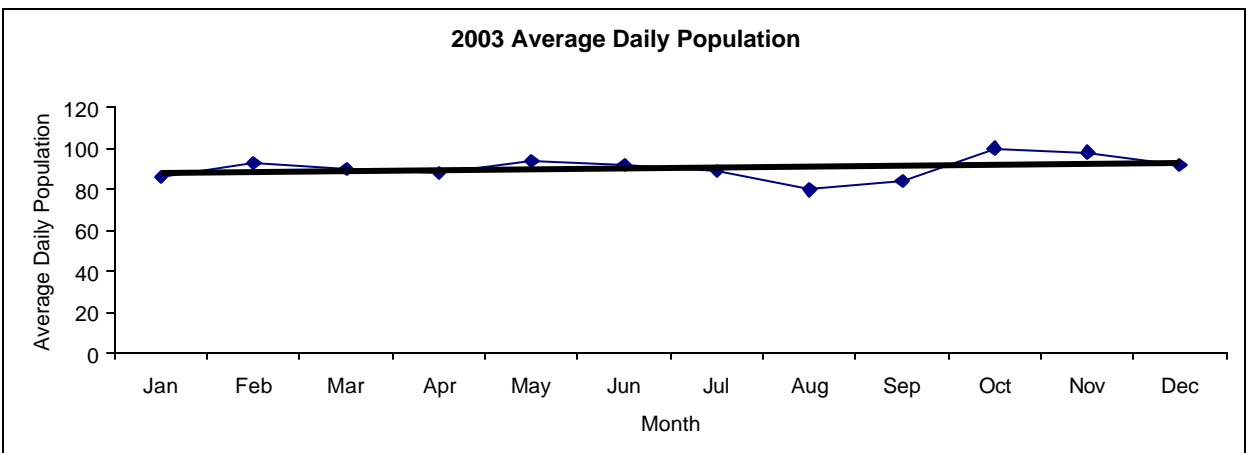
2001 Avg. Daily Pop.	Jan	Feb	Mar	Apr	May	Jun	Jul	Aug	Sep	Oct	Nov	Dec	Total
	120	122	134	130	132	119	109	110	107	92	97	102	<b>115</b>



2002 Avg. Daily Pop.	Jan	Feb	Mar	Apr	May	Jun	Jul	Aug	Sep	Oct	Nov	Dec	Total
	113	96	113	103	102	100	97	104	96	116	108	95	<b>104</b>

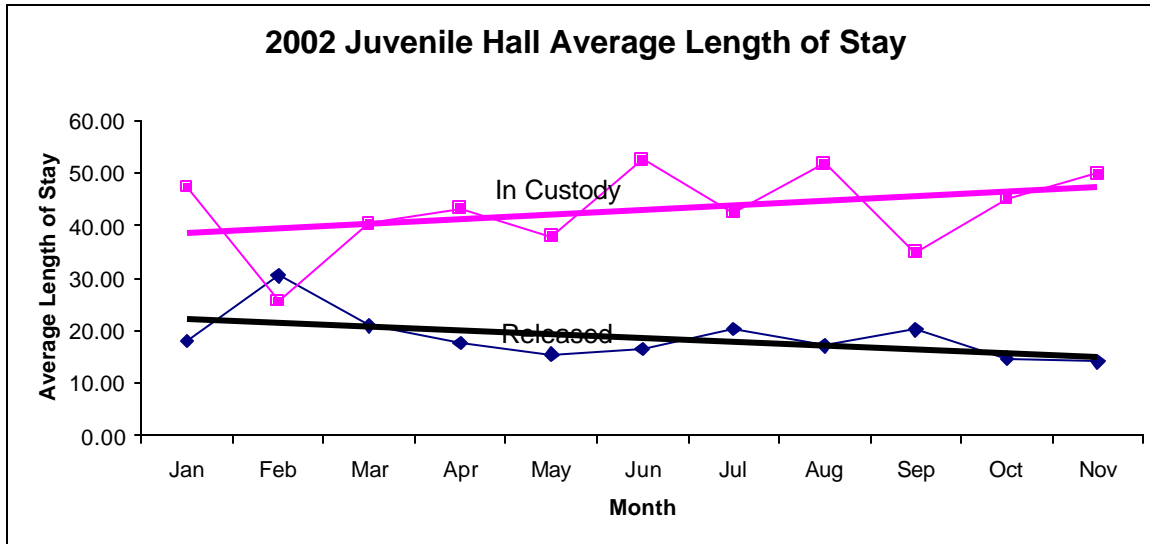


2003 Avg. Daily Pop.	Jan	Feb	Mar	Apr	May	Jun	Jul	Aug	Sep	Oct	Nov	Dec	Total
	86	93	90	88	94	92	89	80	84	100	98	92	<b>91</b>

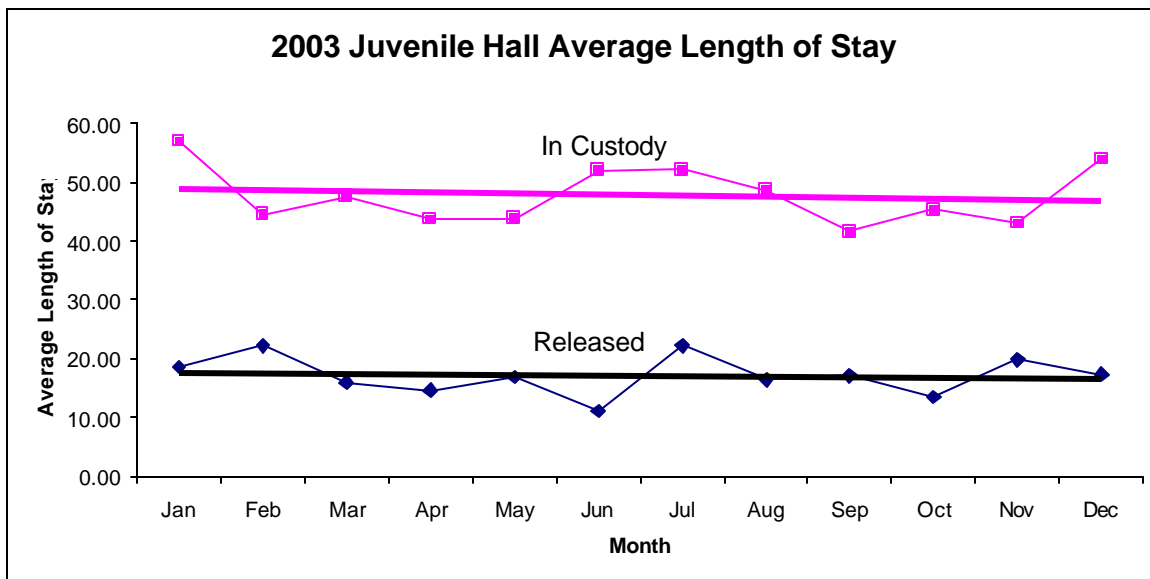


San Francisco Juvenile Probation  
**Juvenile Hall Average Length of Stay By Month**  
 (Calendar Years 2002-2003)

2002 Avg. Length of Stay	Jan	Feb	Mar	Apr	May	Jun	Jul	Aug	Sep	Oct	Nov	Dec	Total
<sup>1</sup> Released	18.05	30.44	20.88	17.65	15.50	16.45	20.22	17.15	20.16	14.67	14.03	18.30	<b>18.63</b>
<sup>2</sup> In Custody	47.30	25.63	40.35	43.29	37.86	52.57	42.41	51.77	34.82	45.11	49.85	58.85	<b>44.15</b>



2003 Avg. Length of Stay	Jan	Feb	Mar	Apr	May	Jun	Jul	Aug	Sep	Oct	Nov	Dec	Total
<sup>1</sup> Released	18.58	22.16	15.97	14.65	16.86	11.07	22.21	16.41	17.13	13.51	19.87	17.30	<b>17.14</b>
<sup>2</sup> In Custody	56.97	44.53	47.63	43.78	43.80	51.98	52.13	48.67	41.61	45.30	43.04	53.96	<b>47.78</b>



**Notes:** Less than one day of stay is calculated as one day.

<sup>1</sup> Length of stay is calculated according to release date for those who are released.

<sup>2</sup> For those still in custody, length of stay is calculated at the last day of the month.