

City and County of San Francisco



Juvenile Probation Department

Monthly Report for November 2003

Presented to the Juvenile Probation Commission

December 24th, 2003

Table of Contents

Section I Summary Reports

Juvenile Hall, Log Cabin Ranch Summary Statistics.....	1
Community Programs Summary Statistics	2
Probation Services Summary Statistics.....	4

Section II Current Month General Detail

Probation Referrals, Juvenile Admissions And Average Daily Population	6
Juvenile Hall Admissions and Average Daily Population.....	7
Commitments to out-of-home placement.....	8
Commitments to California Youth Authority.....	9
Log Cabin Ranch Admissions and Average Daily Population.....	10
Probation Referrals	11
Juvenile Hall And Log Cabin Ranch Incident Report	12
Juvenile Hall And Log Cabin Ranch Grievances Report.....	13
Bay Area Resident Juvenile Hall Comparison	14
Juvenile Hall Admissions.....	15
Juvenile Hall Detainees by Detention Reason.....	16
Juvenile Hall Average Daily Population by Rated Capacity.....	17
Juvenile Hall Average Length of Stay.....	18

Section III Demographics

Juvenile Hall Detainees by Sex and Race/Ethnic Origin.....	19
Juvenile Hall Detainees by Age	20
Juvenile Hall Detainees by Age and Sex.....	21
Juvenile Hall Detainees by Geographic Residence of Youth.....	22
Juvenile Hall Detainees by Race/Ethnic Origin and Sex.....	23

Section IV
Historical Information

2000-2002 Probation Referrals24
2000-2002 Juvenile Hall Admissions25
2000-2002 Juvenile Hall Average Daily Population.....26
2001-2002 Juvenile Hall Average Length of Stay by Month.....27
2001-2002 Probation Referrals, Juvenile Hall Admissions and
Average Daily Population28



Section I

Summary Reports

Summary Report for the Month of November 2003

Juvenile Hall	<i>October 2002</i>	<i>October 2003</i>	<i>November 2002</i>	<i>November 2003</i>	<i>YTD 2002</i>	<i>YTD 2003</i>
Admissions	206	209	183	154	1995	1890
Average Daily Population	116	100	108	98	104.36	90.81
Average Length of Stay (Releases)	14.67	13.51	14.03	19.87	18.65	17.13
Average Length of Stay (In Custody)	45.11	45.30	49.85	43.04	42.81	47.22
Releases	221	208	180	150	1192	1883
Log Cabin Ranch						
Admissions:						
First Time Commitments	3	0	3	2	34	25
Recommitments	0	0	0	0	1	1
<i>Total</i>	3	0	3	2	35	26
Releases:						
Graduated	0	5	0	3	15	28
Escape	0	0	0	0	0	0
Other releases	0	0	4	0	9	10
<i>Total</i>	0	5	4	3	24	38
Average Daily Population	27	24	27	20	22	24
Grievances Filed						
Juvenile Hall:						
G1	4	0	0	*	6	4
B2	2	0	0	*	10	1
B3	2	0	1	*	7	0
B4	1	0	0	*	4	14
B5	0	0	0	*	3	5
G2 (CO-ED)	0	0	0	*	14	3
RU	0	0	2	*	2	0
<i>Total</i>	9	0	3	*	46	27
Log Cabin Ranch	0	0	8	0	8	0
Incident Reports						
Juvenile Hall	24	17	18	21	206	154
Log Cabin Ranch	3	0	0	1	16	11
<i>Total</i>	27	17	18	22	222	165

*Data not available

Summary Report for the Month of November 2003

Community Programs	<i>Program Vacancies by Agency on November 2003</i>	<i>Active in program October 2002</i>	<i>Active in Program October 2003</i>	<i>Active in Program November 2002</i>	<i>Active in Program November 2003</i>
IHBS Monthly Client Count					
BayView Hunters Point Foundation	12	16	16	17	16
Chinatown Youth Center	3	13	10	13	10
Morrisania West, Inc.	2	11	11	11	11
Office of Samoan Affairs	4	8	9	8	9
Potrero Hill Neighborhood House	6	11	7	11	7
Instituto Familiar de La Raza	12	19	22	19	22
Vietnamese Youth Development Center	6	9	7	9	7
Brothers Against Guns	0	0	16	0	16
<i>Total</i>	45	87	98	88	98
<i>November 2003 Percent Program Utilization</i>	69%				
<i>November 2003 Percent Change from last report</i>	0%				

Summary Report for TANF and Girls Programs
Month: October 2003

PROGRAM	ANNUAL GOAL	NUMBER SERVED
California Community Dispute Services: Youth Accountability Boards	40	38
CARECEN: Tattoo Removal and Case Management	45	48
Center for Young Women's Development: Girls Services	40	68
Community Works – Girls Diversion Program	24	7
Community Works – Girls Therapeutic Arts Curriculum in Juvenile Hall	150	23
Community Works – ROOTS Support for Children of Incarcerated Parents	40	34
Edgewood Kinship Support Network	40	17
Family Restoration House: Life Skills	30	
Girls 2000: Girls Services and Family Support Services	20	20
Instituto Familiar de la Raza – Case Management	10	7
Mission Neighborhood Center: Young Queens on the Rise – Girls Services	35	24
Performing Arts Workshop: Arts Education at Impact High School	30	17
SAGE: Girls Services	35	26
Samoan Community Development Center: Anger Management	75	35
Special Services for Groups – Occupational Therapy Training Program	78	60
United Way/Girls Justice Initiative: Detention-based Case Management & Inside Mentoring Program	300 72	89 47
Urban Services YMCA: Bayview Beacon Educational & Parent Support	50	10
YGCIC Focus Vocational Programs	55	20
YGCIC GED Plus	50	14
YWCA – CITS Girls Mentorship	24	21
YWCA – FITS Girls Services	40	12

Summary Report for the Month of November 2003

Probation Services	<i>October 2003</i>	<i>October 2003</i>	<i>Year To Date 2003</i>
Probation Referrals	288	200	2922
Petitions	99	67	1045
Selected Court Dispositions:			
California Youth Authority	3	0	9
Log Cabin Ranch	1	3	28
Out of Home Placement	14	11	135
Other Probation	29	20	305
Violation of Probation Petitions Filed	13	10	150
California Youth Authority Monthly Count			
Institutions:			
Males	44	44	
Females	4	5	
Total	48	49	
Parole:			
Males	29	27	
Females	3	2	
Total	32	29	

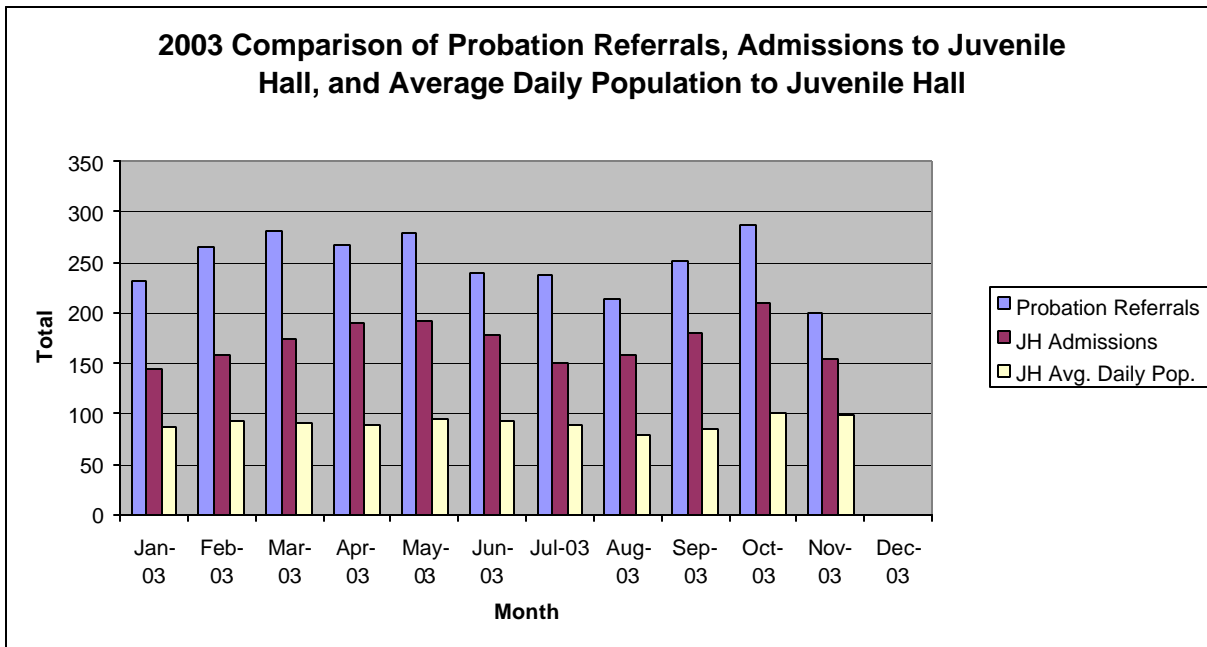
Summary Report for the Month of November 2003

Probation Services			
Caseload List	October 2003	November 2003	November Average # Youth by PO
South Intake	204	214	42
North Intake	162	152	25
Prevention Diversion	181	179	19
Serious Offenders	101	102	17
Supervision	154	154	19
County Placement	29	31	31
Private Placement	182	184	16
Drug Court	34	31	31
Family Integrated Treatment Services	112	111	13
<i>Total</i>	1159	1158	24
Special Services Unit	New	Closed	Active at end of Month
Record Sealings	10	2	130
Stepparent Adoptions	6	0	57
Terminations	0	0	10
Marriage Consents	0	2	4
Custody Evaluations	0	0	0
	Entered	Completed	Active at end of Month
Community Service	7	6	1138
Street Law	12	5	
		Referred	Completed at end of Month
COPS (no class this month)		12	9
Theft Awareness		21	17
Anger Management (still in session)		18	
Life Management Skills (no class)		0	0
Information, Record Checks, Research & Photo Copying Juvenile Records For:	October 2003	November 2003	Year to Date 2003
Job Corps, Probation Departments, Military, Law Enforcement,			
Misc., (letters, Memos, Forms, etc.)	160	139	1418

Section II
Current Month
General Detail

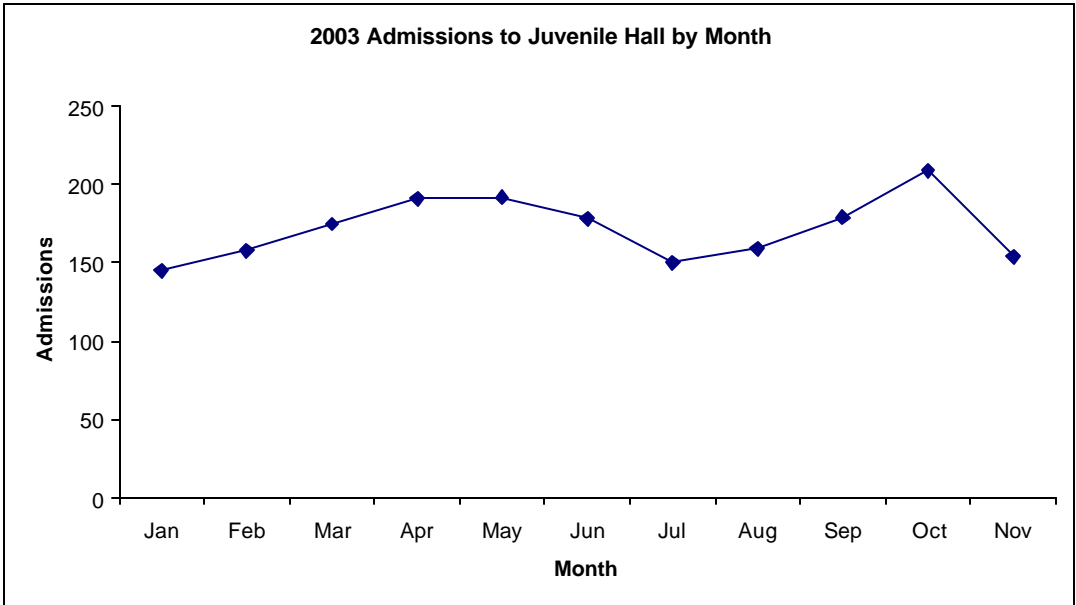
San Francisco Juvenile Probation

	Jan-03	Feb-03	Mar-03	Apr-03	May-03	Jun-03	Jul-03	Aug-03	Sep-03	Oct-03	Nov-03	Dec-03
Probation Referrals	231	265	281	267	280	239	237	214	251	288	200	
JH Admissions	145	158	175	191	192	178	150	159	179	209	154	
JH Avg. Daily Pop.	86	93	90	88	94	92	89	80	84	100	98	

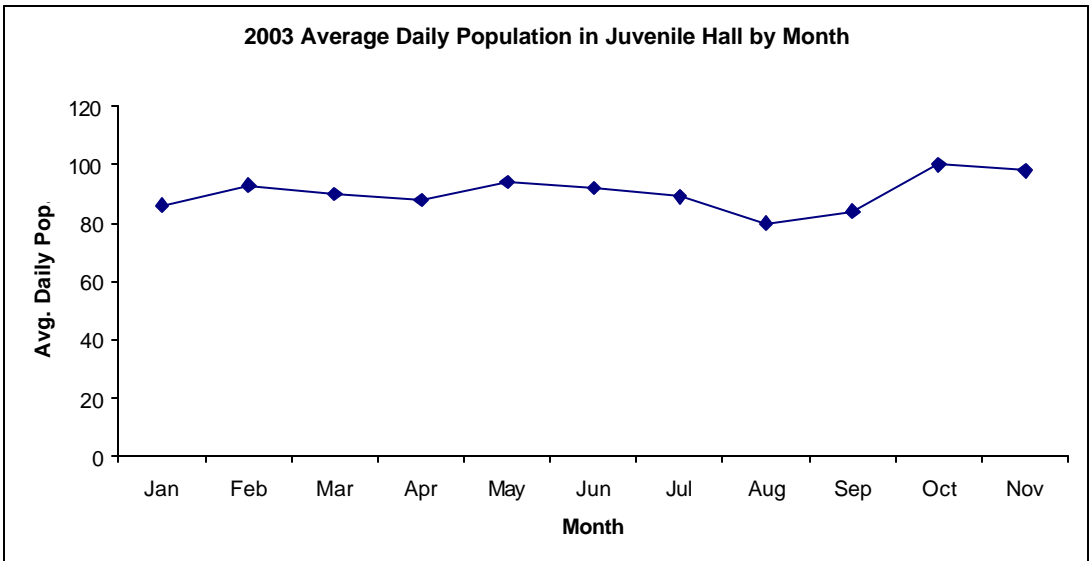


San Francisco Juvenile Probation Admissions and Average Daily Population In Juvenile Hall (Calendar Year 2003)

Admissions	Jan	Feb	Mar	Apr	May	Jun	Jul	Aug	Sep	Oct	Nov	Dec	Total
2003	145	158	175	191	192	178	150	159	179	209	154		1890



Avg. Daily Pop.	Jan	Feb	Mar	Apr	May	Jun	Jul	Aug	Sep	Oct	Nov	Dec	Total
2003	86	93	90	88	94	92	89	80	84	100	98		90

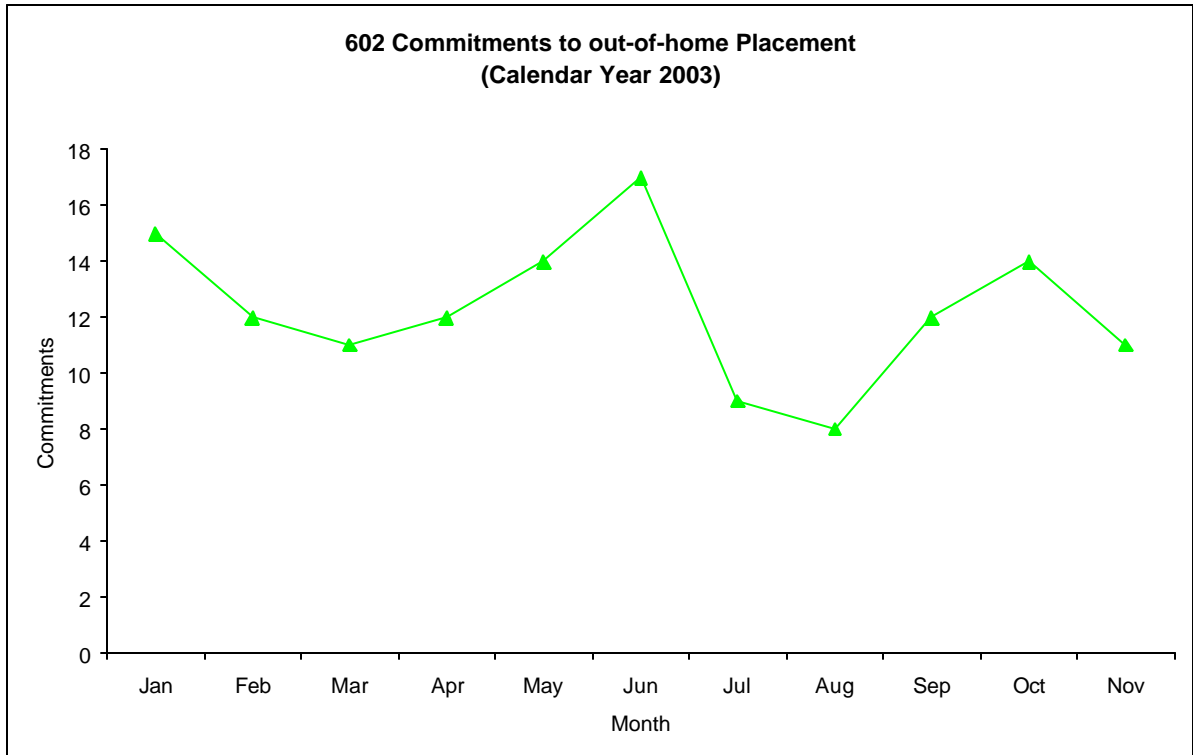


Out-of-Home Placement¹

Commitments of 602's

Calendar Year 2003

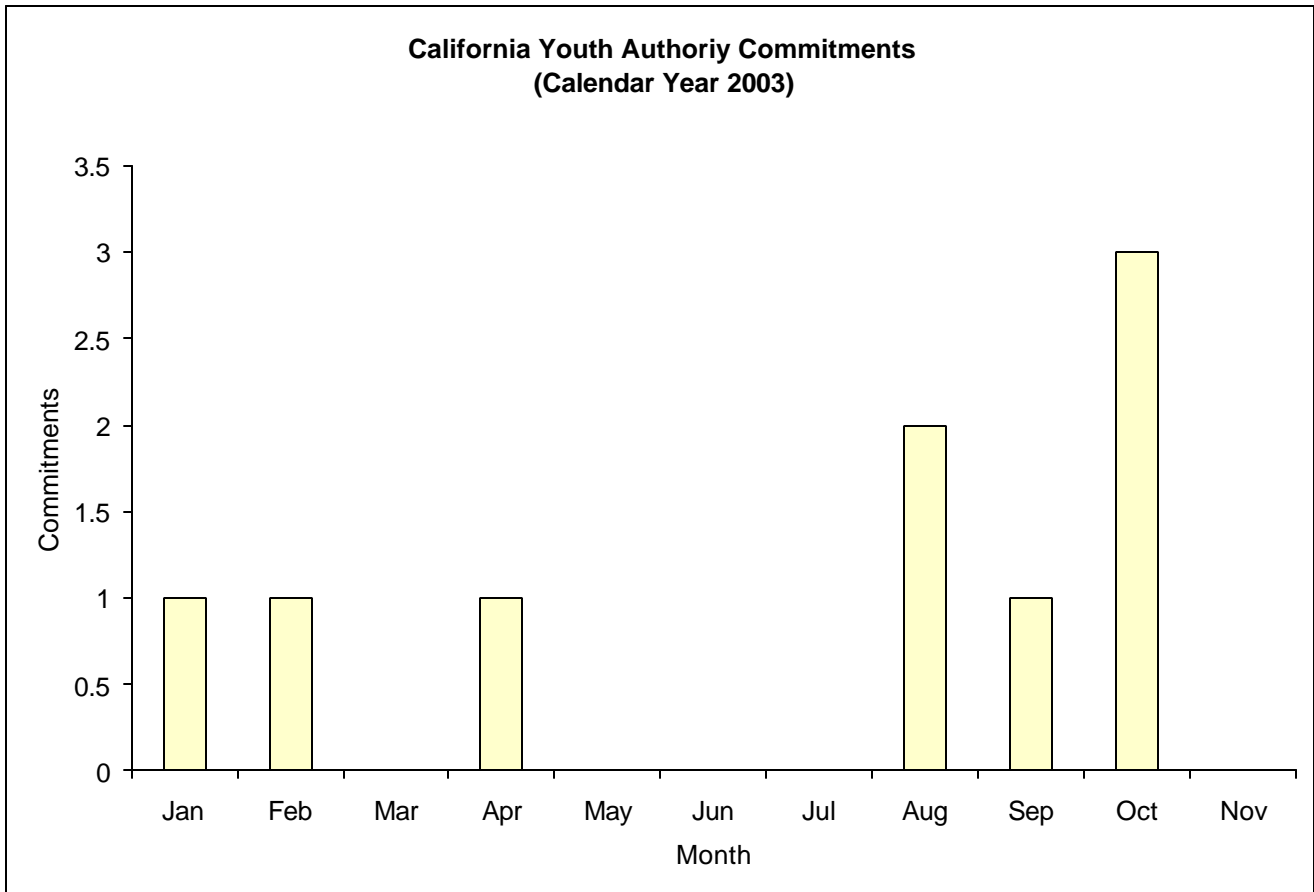
Commitments	Jan	Feb	Mar	Apr	May	Jun	Jul	Aug	Sep	Oct	Nov	Dec	Total
2003	15	12	11	12	14	17	9	8	12	14	11		135



¹ This report is based on 602 Commitments to out-of-home placements. If there is a 601 commitment, it will show as a footnote here. Figures are regularly updated to include reports from previous reporting periods.

California Youth Authority Commitments (Calendar Year 2003)

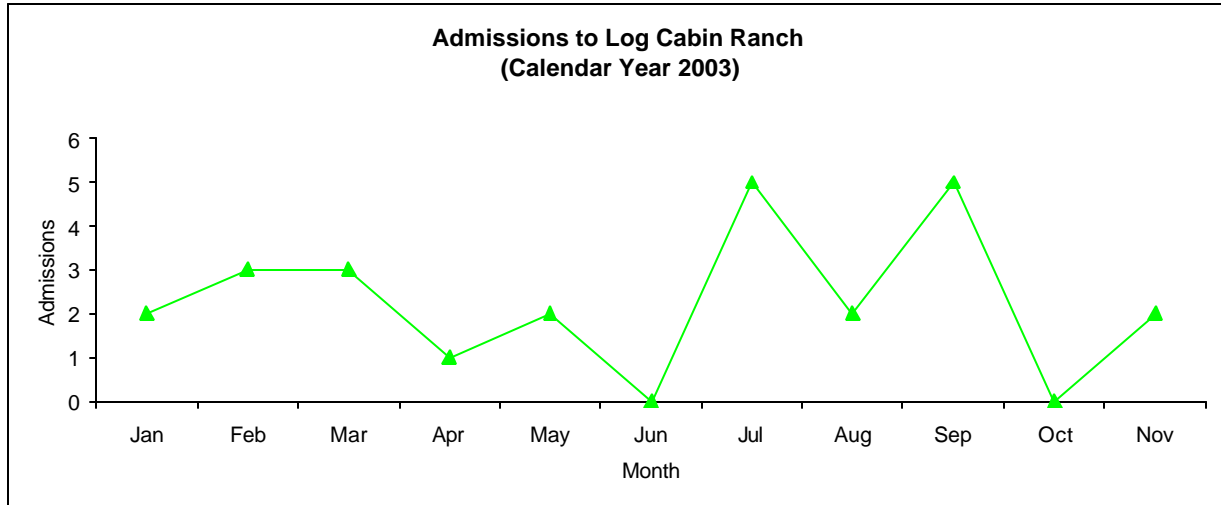
Commitments	Jan	Feb	Mar	Apr	May	Jun	Jul	Aug	Sep	Oct	Nov	Dec	Total
2003	1	1	0	1	0	0	0	2	1	3	0		9



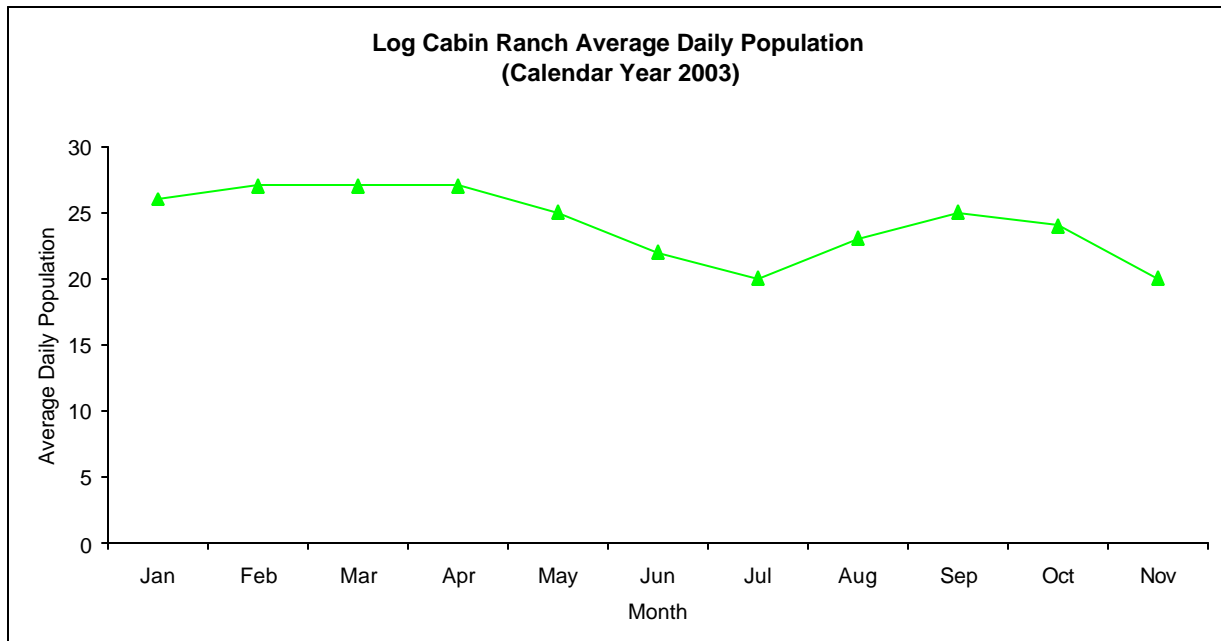
Log Cabin Ranch

Admissions and Average Daily Population (Calendar Year 2003)

Admissions	Jan	Feb	Mar	Apr	May	Jun	Jul	Aug	Sep	Oct	Nov	Dec	Total
2003	2	3	3	1	2	0	5	2	5	0	2		25



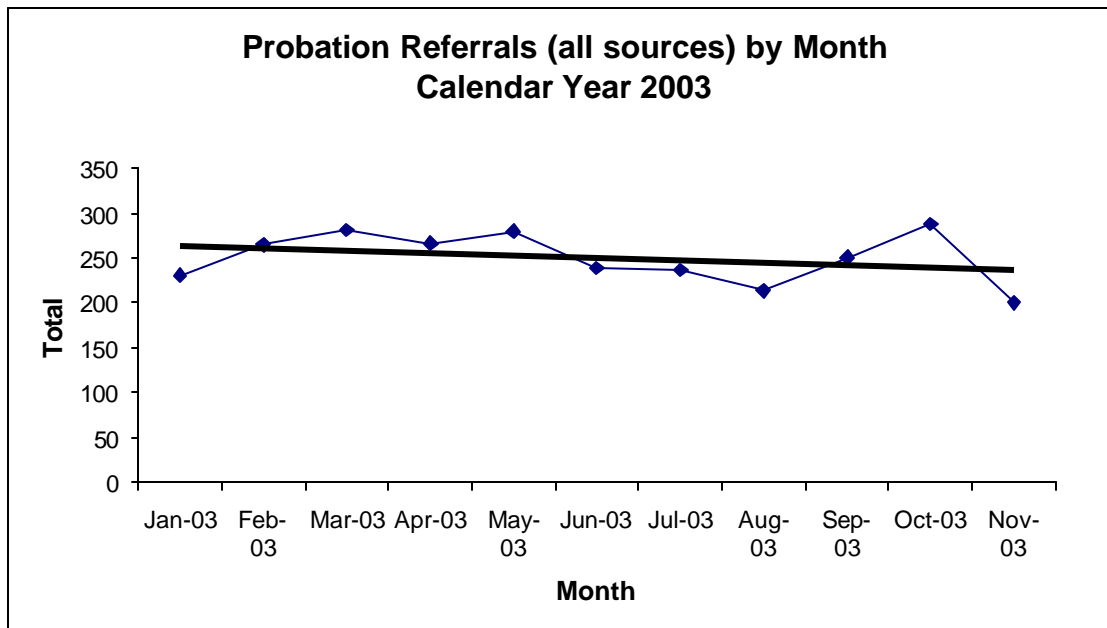
Avg. Daily Pop.	Jan	Feb	Mar	Apr	May	Jun	Jul	Aug	Sep	Oct	Nov	Dec	Total
2003	26	27	27	27	25	22	20	23	25	24	20		24.18



Calendar Year 2003

Probation Referrals (all sources) by Month (602 W&I)

Jan-03	231
Feb-03	265
Mar-03	281
Apr-03	267
May-03	280
Jun-03	239
Jul-03	237
Aug-03	214
Sep-03	251
Oct-03	288
Nov-03	200



SAN FRANCISCO JUVENILE PROBATION DEPARTMENT
 MONTHLY INCIDENT REPORT FORM
 MONTH/YEAR: NOVEMBER 2003

Log Cabin Ranch	Battery on Staff	Injury to Staff due to Restraint of Minor	Fight	Battery Youth on Youth	Attempted Escape	AWOL	Attempted Suicide	Serious Contraband (Weapon Illegal Drug)
	0	0	0	0	0	0	0	0
	Battery on Staff with Injury	Fire	Fight with Injury	Battery Youth on Youth with Injury	Escape	Death	Suicide	Major Property Destruction
0	1	0	0	0	0	0	0	0
Juvenile Hall	Battery on Staff	Injury to Staff due to Restraint of Minor	Fight	Battery Youth on Youth	Attempted Escape	AWOL	Attempted Suicide	Serious Contraband (Weapon Illegal Drug)
	0	0	14	1	0	0	0	1
	Battery on Staff with Injury	Fire	Fight with Injury	Battery Youth on Youth with Injury	Escape	Death	Suicide	Major Property Destruction
0	0	2	0	0	0	0	0	3

Grievances Filed November 2003

San Francisco Juvenile Probation Department

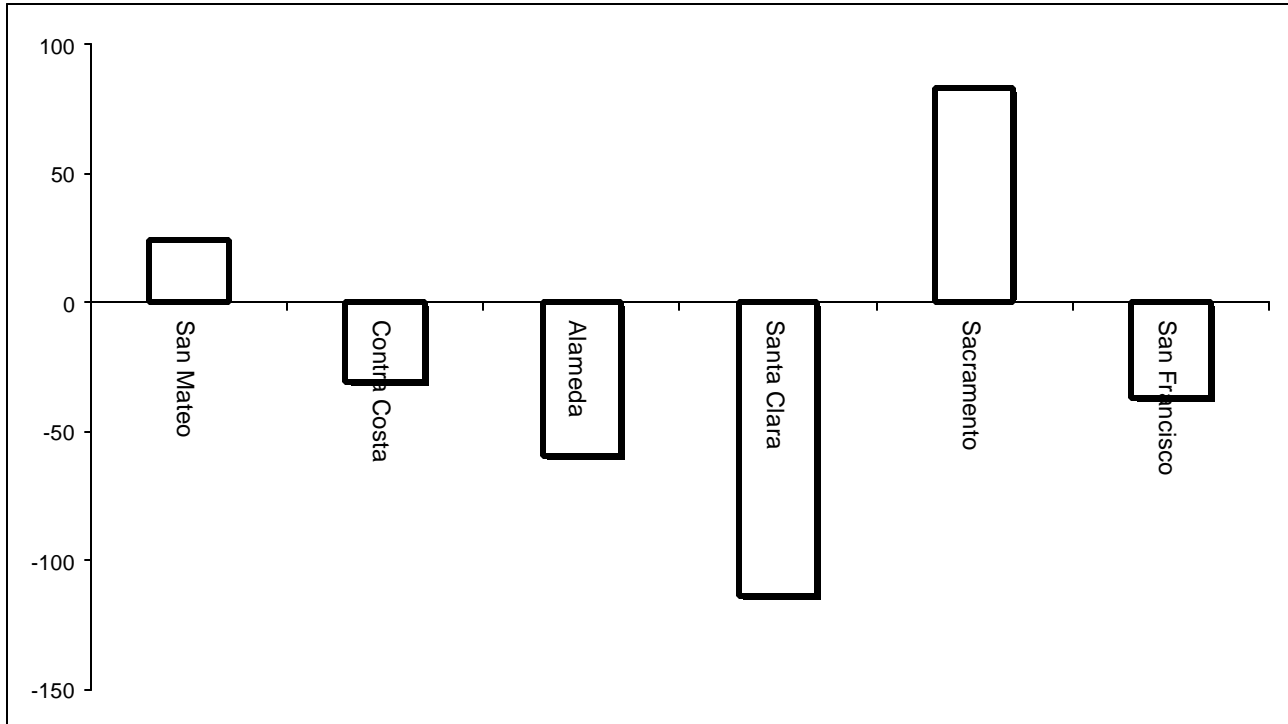
Juvenile Hall

Note: The IT unit did not receive any report from the Ombudsman for the month of November 2003.

Log Cabin Ranch

Type	Log Cabin Ranch
Food/Snacks	0
Laundry	0
Personal Property	0
Phone Calls	0
Procedures	0
Head Call	0
Discipline	0
Complaints vs. Staff	0
Cottage Change	0
Medical	0
School	0
Probation	0
Miscellaneous	0
Total	0

Bay Area Resident Juvenile Hall Comparison
Over/Under Capacity
on December 2nd, 2003

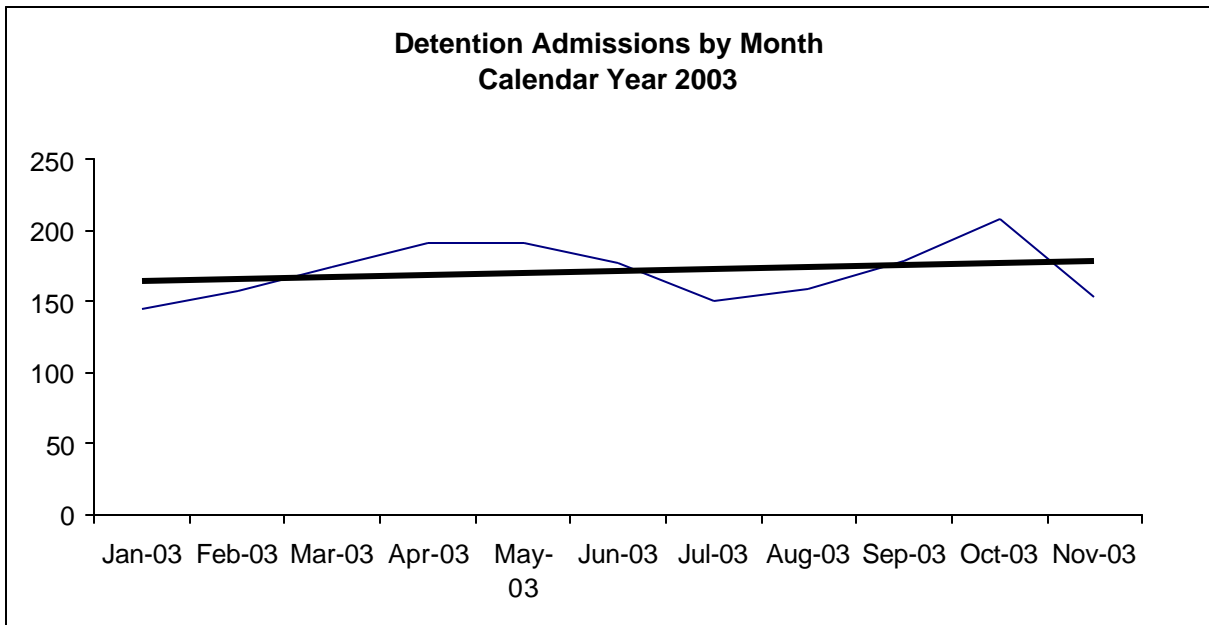


	Rated Capacity	Actual	Over/Under Capacity
San Mateo	130	154	24
Contra Costa	160	129	-31
Alameda	288	228	-60
Santa Clara	329	215	-114
Sacramento	256	339	83
San Francisco	132	95	-37

Juvenile Hall Admissions by Month Calendar Year 2003

Detention Admissions by Month

Jan-03	145
Feb-03	158
Mar-03	175
Apr-03	191
May-03	192
Jun-03	178
Jul-03	150
Aug-03	159
Sep-03	179
Oct-03	209
Nov-03	154

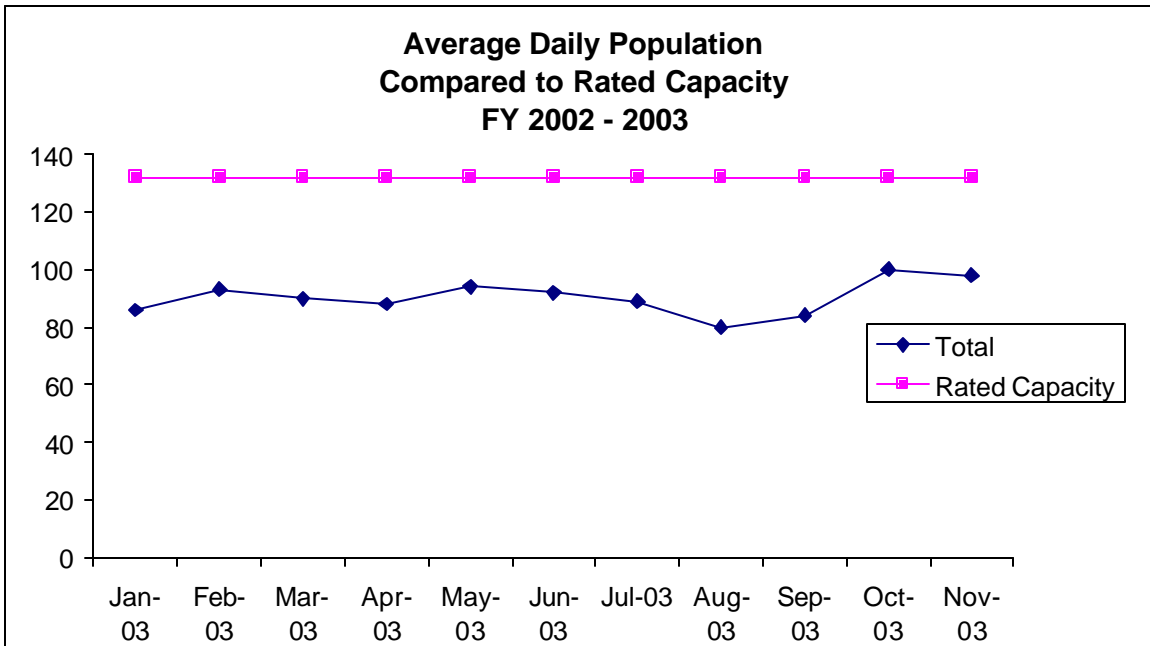


**Characteristics of Juvenile Hall Detainees on November 30th, 2003
Using CJIS Code From the Department of Justice**

Detention Reason	Offense Code	MFI	Attempted	Count	%
AGGRAVATED MAYHEM	205 PC	F		1	1.04%
ASSAULT W/DEADLY WEAPON ON TRANSPORTATION PERSONNEL/ETC	245.2 PC	F		1	1.04%
ATTEMPTED MURDER	664 /187 (A) PC	F		4	4.17%
ATTEMPTED MURDER:SECOND DEGREE ON PEACE OFFICER	664 /187 (A) PC	F		3	3.13%
BATTERY AGAINST EMERGENCY PERSON/ETC	243 (C)(1) PC	F		1	1.04%
BATTERY ON PERSON	243 (A) PC	M		1	1.04%
BATTERY ON SCHOOL EMPLOYEE	243.6 PC	M		1	1.04%
BENCH WARRANT	BENCH WARRANT XX	X		1	1.04%
BURGLARY	459 PC	F		2	2.08%
BURGLARY:FIRST DEGREE	459 PC	F		2	2.08%
BURGLARY:SECOND DEGREE	459 PC	F		3	3.13%
CARJACKING	215 PC	F		2	2.08%
CARRY CONCEALED WEAPON IN VEHICLE W/PRIOR FELONY CONVICTION	12025 (A)(1) PC	F		1	1.04%
CARRY CONCEALED WEAPON:PROHIBITED CLASS/UNLAWFUL POSSESSION	12025 (B)(4) PC	F		1	1.04%
CHANGE OF PLACEMENT/PLACEMENT FAILURE	737 WI	M		6	6.25%
COURT ORDER 602	CTORD 602 XX	X		7	7.29%
DISORDERLY CONDUCT:PROSTITUTION	647 (B) PC	M		1	1.04%
EVADING P.O.:CAUSING SERIOUS BODILY INJURY OR DEATH	2800.3 VC	F		1	1.04%
FAIL TO OBEY ORDER OF JUVENILE COURT 602 WI	777 (A)(2) WI	M		8	8.33%
FALSE IDENTIFICATION TO SPECIFIC PEACE OFFICERS	148.9(A) PC	M		1	1.04%
FORCE OR ADW NOT FIREARM:GBI LIKELY	245 (A)(1) PC	F		2	2.08%
GRAND THEFT:MONEY/LABOR/PROPERTY OVER \$400	487 (A) PC	F		1	1.04%
LCR MEDICAL	LCR MED XX	X		1	1.04%
LOITER:INTENT:PROSTITUTION	653.22(A) PC	M		2	2.08%
MURDER	187 (A) PC	F		4	4.17%
PETTY THEFT	484 (A) PC	M		2	2.08%
PO 602	PO 602 XX	X		3	3.13%
POSSESS MARIJUANA FOR SALE	11359 HS	F		1	1.04%
POSSESS NARCOTIC CONTROLLED SUBSTANCE	11350 (A) HS	F		2	2.08%
POSSESS/PURCHASE COCAINE BASE FOR SALE	11351.5 HS	F		1	1.04%
ROBBERY:SECOND DEGREE	212.5(C) PC	F		8	8.33%
ROBBERY:SECOND DEGREE	212.5(C) PC	F	Y	1	1.04%
SEXUAL BATTERY	243.4(A) PC	F		1	1.04%
TAKE VEHICLE W/O OWNER'S CONSENT/VEHICLE THEFT	10851 (A) VC	F		1	1.04%
TRANSPORT/SELL NARCOTIC/CONTROLLED SUBSTANCE	11352 (A) HS	F		5	5.21%
VIOLATION(S) OF HOME SUPERVISION CONDITION	628.1 WI	M		3	3.13%
WARRANT 602	WRNT602 XX	X		10	10.42%
Total				96	100.00%

**Average Daily Population
By Rated Capacity
Calendar Year 2003**

	Total	Rated Capacity
Jan-03	86	132
Feb-03	93	132
Mar-03	90	132
Apr-03	88	132
May-03	94	132
Jun-03	92	132
Jul-03	89	132
Aug-03	80	132
Sep-03	84	132
Oct-03	100	132
Nov-03	98	132



Juvenile Hall Average Length of Stay

For the Month of November 2003

¹Released

Range of Days	<i>1-10 days</i>	<i>11-20 days</i>	<i>21-30 days</i>	<i>30 or more days</i>	Total
# of Youth Released	95	15	10	30	150
% of Population	71.30%	8.70%	3.80%	16.30%	100%
# of Days	304	212	248	2216	2980
% of Total Days	10.20%	7.11%	8.32%	74.36%	100%
Average Length of Stay	3.20	14.13	24.80	73.87	19.87

²In Custody

Range of Days	<i>1-10 days</i>	<i>11-20 days</i>	<i>21-30 days</i>	<i>30 or more days</i>	Total
# of Youth Detained	23	18	17	38	96
% of Population	38.60%	18.10%	12.60%	30.70%	100%
# of Days	128	261	439	3304	4132
% of Total Days	3.10%	6.32%	10.62%	79.96%	100%
Average Length of Stay	5.57	14.50	25.82	86.95	43.04

Notes: Less than one day of stay is calculated as one day.

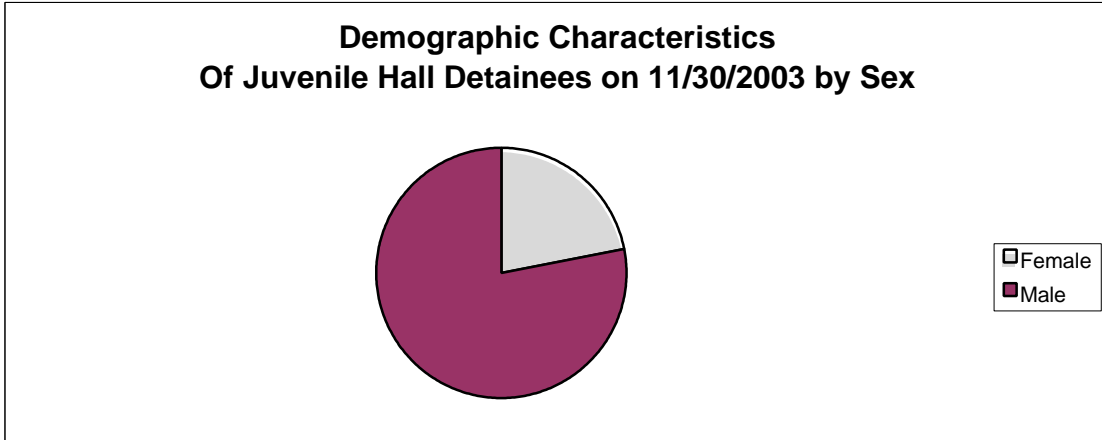
¹Length of stay is calculated according to release date for those who are released.

²For those still in custody, length of stay is calculated at the last day of the month.

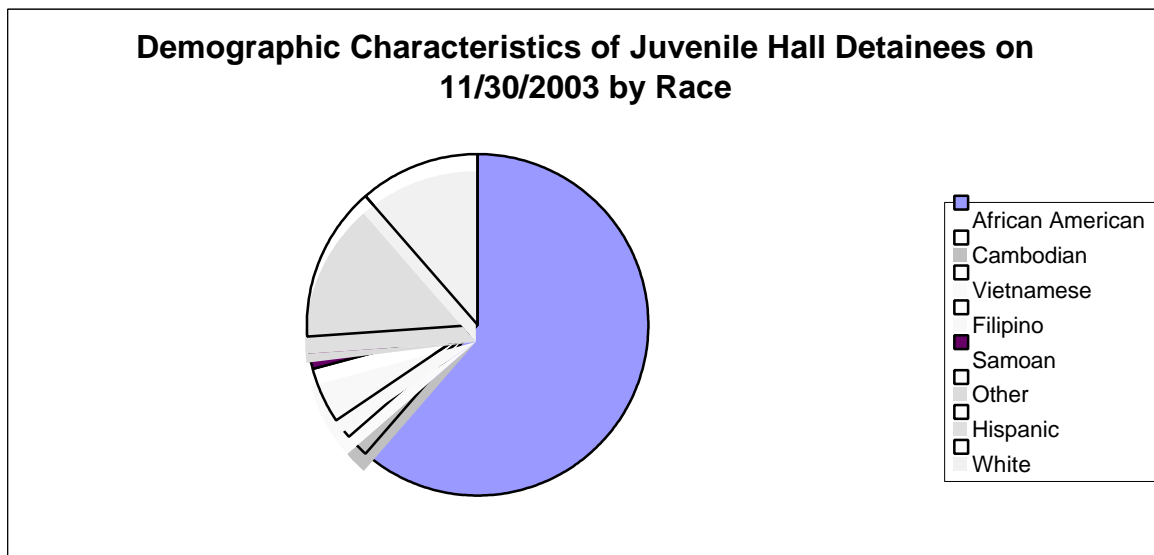
Section III

Demographics

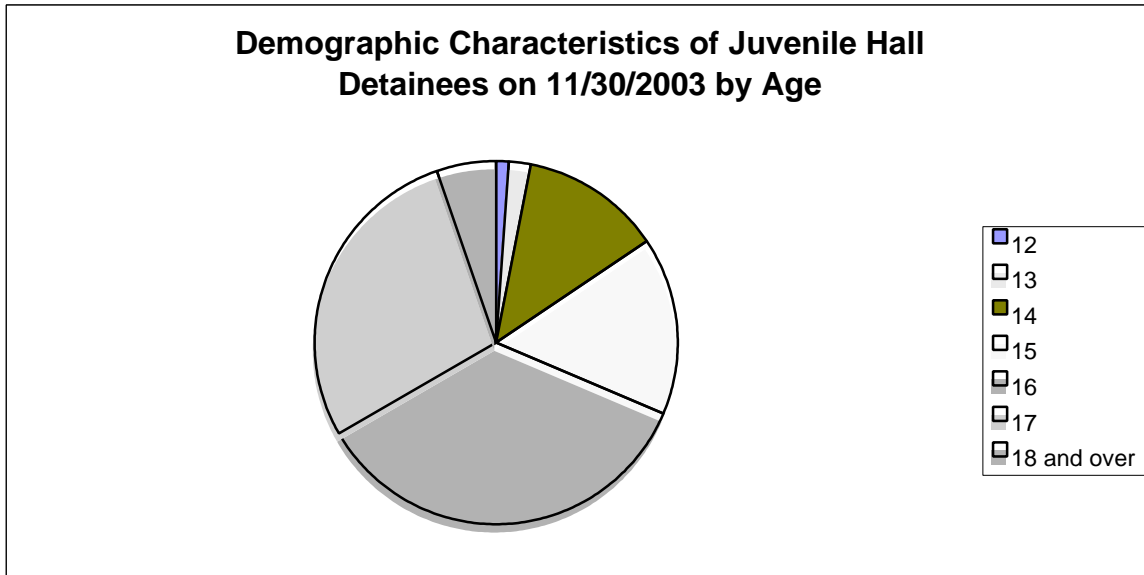
Sex	Frequency	Percent
Female	21	21.88%
Male	75	78.13%
Total	96	100.00%



Race/Ethnic Origin	Frequency	Percent
African American	59	61.46%
Cambodian	2	2.08%
Vietnamese	2	2.08%
Filipino	5	5.21%
Samoan	2	2.08%
Other	1	1.04%
Hispanic	14	14.58%
White	11	11.46%
Total	96	100.00%

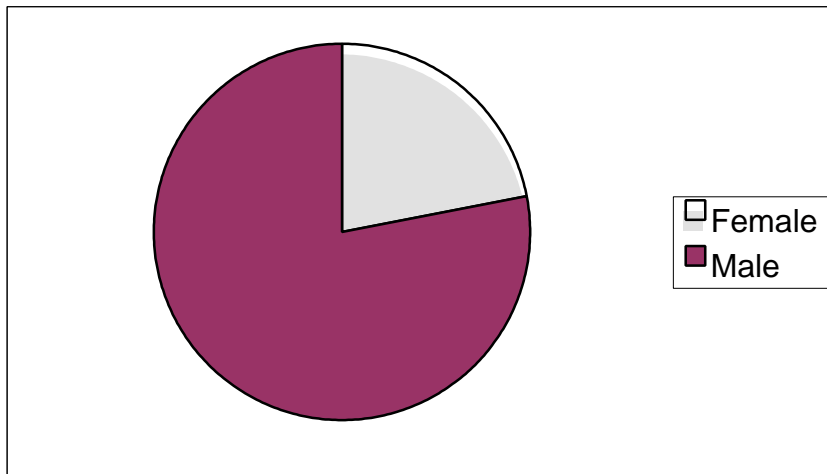


Age	Frequency	Percent
12	1	1.04%
13	2	2.08%
14	12	12.50%
15	15	15.63%
16	34	35.42%
17	27	28.13%
18 and over	5	5.21%
Total	96	100.00%



Demographic Characteristics of Juvenile Hall Detainees
on 11/30/2003
Age by Sex

Age	Female	Male	Total	
12	0	1	1	1.04%
13	0	2	2	2.08%
14	6	6	12	12.50%
15	4	11	15	15.63%
16	5	29	34	35.42%
17	4	23	27	28.13%
18 and over	2	3	5	5.21%
Total	21	75	96	100.00%
	21.88%	78.13%	100.00%	



Demographic Characteristics
Of Juvenile Hall Detainees on November 30th, 2003

Geographic Residence of Youth	Frequency	Percent
Richmond	3	3.1
Treasure Island/Yerba Buena	2	2.1
Western Addition	7	7.3
South of Market/Tenderloin	3	3.1
Sunset	1	1.0
Haight Ashbury/Castro	1	1.0
Inner Mission	3	3.1
Potrero	5	5.2
Parkside	1	1.0
Ingleside (West of Twin Peaks)	8	8.3
Outer Mission	23	24.0
Bayview	16	16.7
Non-San Francisco and Unavailable	23	24.0
	-----	-----
Total	96	100.0

Non-San Francisco and Unavailable	Frequency	Percent
CAMPBELL	1	4.3
CANBY	1	4.3
CLEARLAKE OAKS	1	4.3
HONDURAS	1	4.3
DALY CITY	1	4.3
FRESNO	1	4.3
LAKEPORT	1	4.3
LOWER LAKE	1	4.3
OAKLAND	2	8.7
RANCHO CORDOBA	1	4.3
SACRAMENTO	1	4.3
SAN MATEO	1	4.3
UNAVAILABLE	9	39.1
VALLEJO	1	4.3
	-----	-----
Total	23	100.0

Demographic Characteristics
Of Juvenile Hall Detainees on November 30th, 2003

Race/Ethnic Origin by Sex

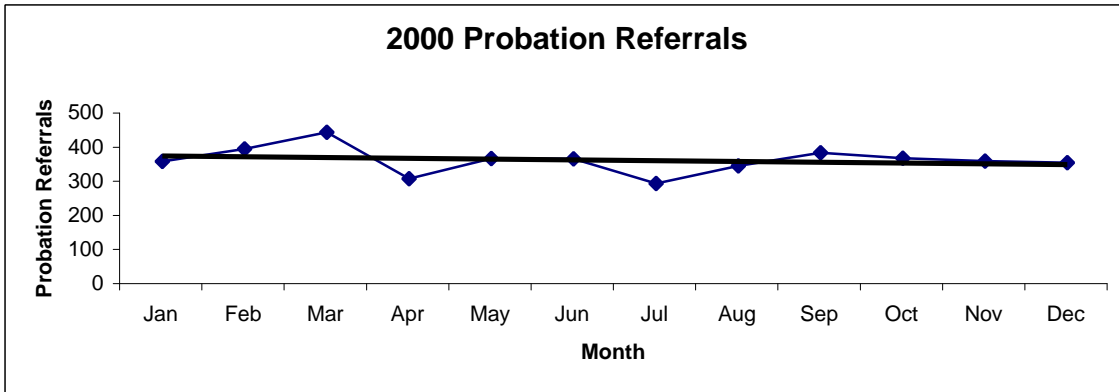
RACE	Count	SEX		Row Total
		Female F	Male M	
AFRICAN AMERICAN	16	43	59	61.5
CAMBODIAN	1	1	2	2.1
FILIPINO		5	5	5.2
HISPANIC	2	12	14	14.6
OTHER		1	1	1.0
SAMOAN		2	2	2.1
VIETNAMESE		2	2	2.1
WHITE	2	9	11	11.5
Column Total	21 21.9	75 78.1	96 100.0	

Section IV

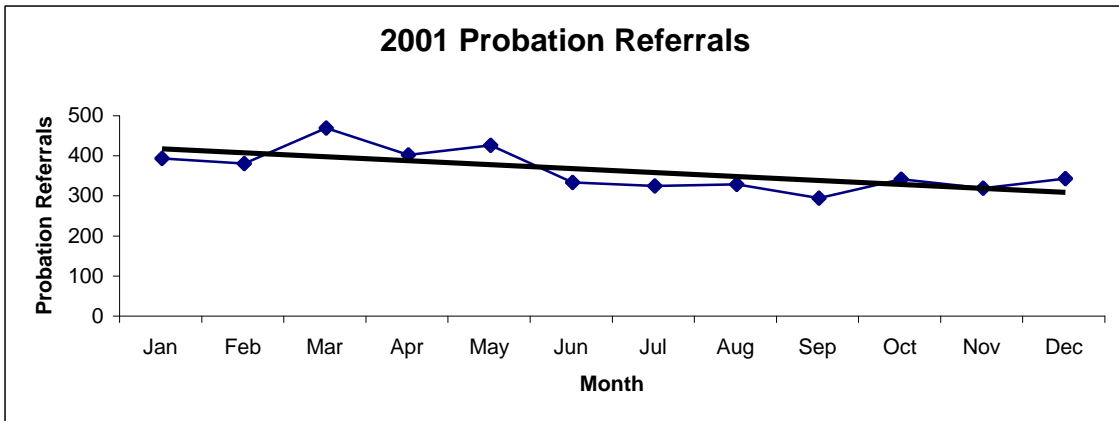
Historical Information

San Francisco Juvenile Probation
Probation Referrals (all sources) By Month
 (2000-2003)

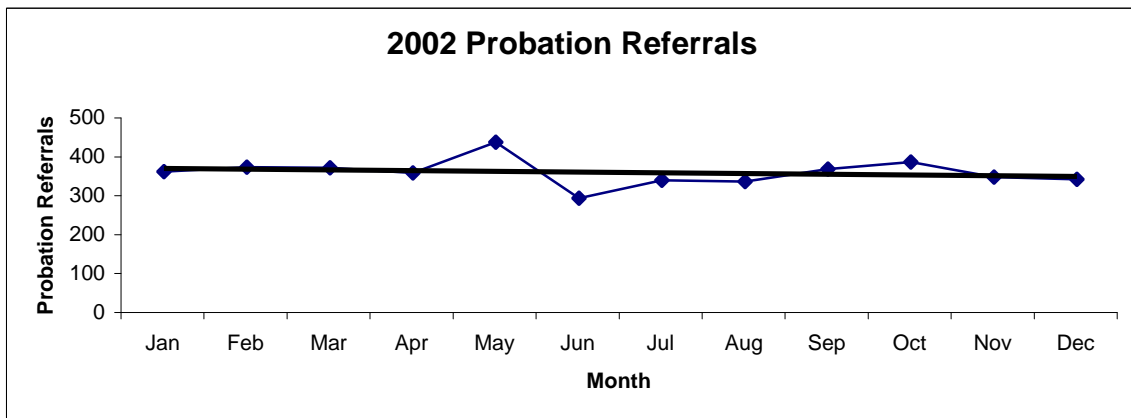
2000 Probation Referrals	Jan	Feb	Mar	Apr	May	Jun	Jul	Aug	Sep	Oct	Nov	Dec	Total
	341	378	427	291	350	349	277	328	367	351	342	338	4139



2001 Probation Referrals	Jan	Feb	Mar	Apr	May	Jun	Jul	Aug	Sep	Oct	Nov	Dec	Total
	361	348	437	370	394	301	292	296	262	309	287	311	3968

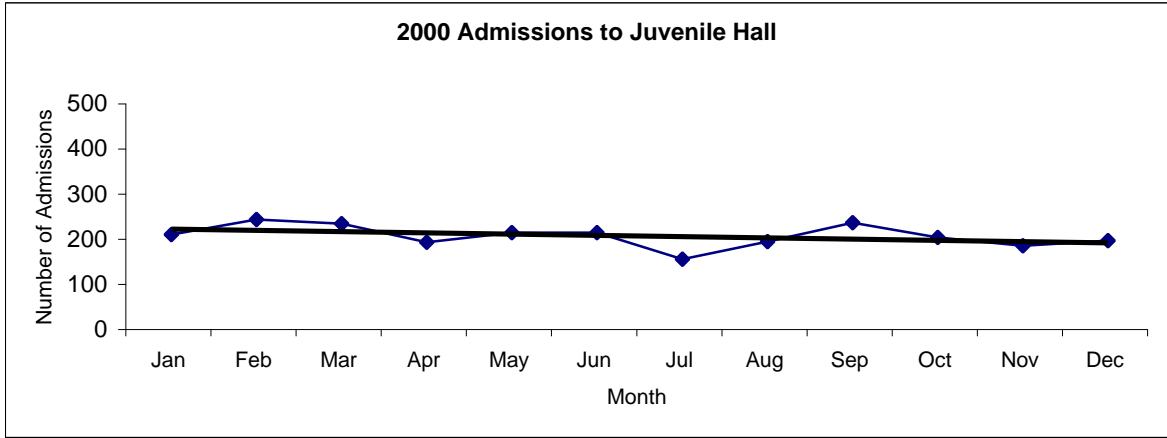


2002 Probation Referrals	Jan	Feb	Mar	Apr	May	Jun	Jul	Aug	Sep	Oct	Nov	Dec	Total
	308	320	318	305	384	240	286	283	315	333	294	289	3675

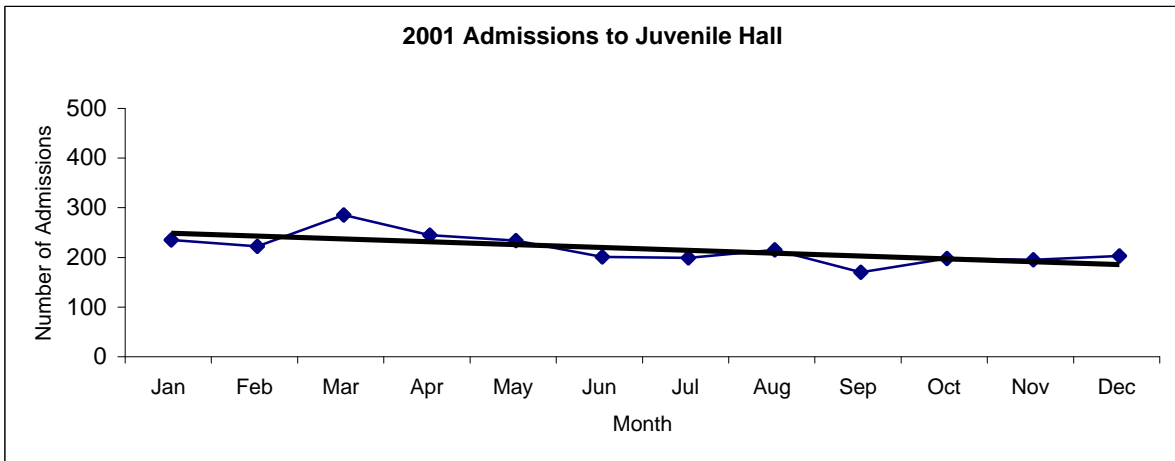


**San Francisco Juvenile Probation
Juvenile Hall Admissions By Month
(2000-2002)**

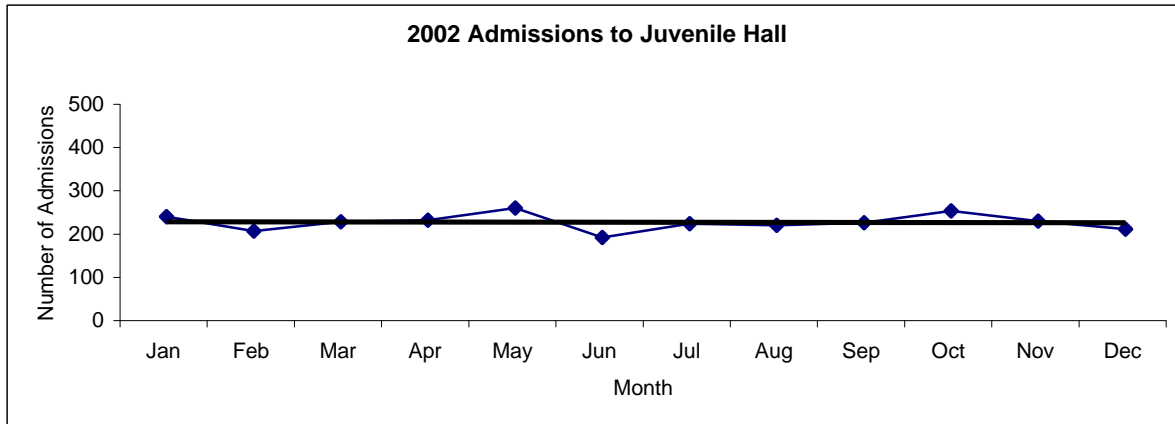
2000 Admissions	Jan	Feb	Mar	Apr	May	Jun	Jul	Aug	Sep	Oct	Nov	Dec	Total
	201	234	225	184	205	205	146	185	227	194	176	187	2369



2001 Admissions	Jan	Feb	Mar	Apr	May	Jun	Jul	Aug	Sep	Oct	Nov	Dec	Total
	210	197	260	220	209	176	174	190	145	173	170	178	2302

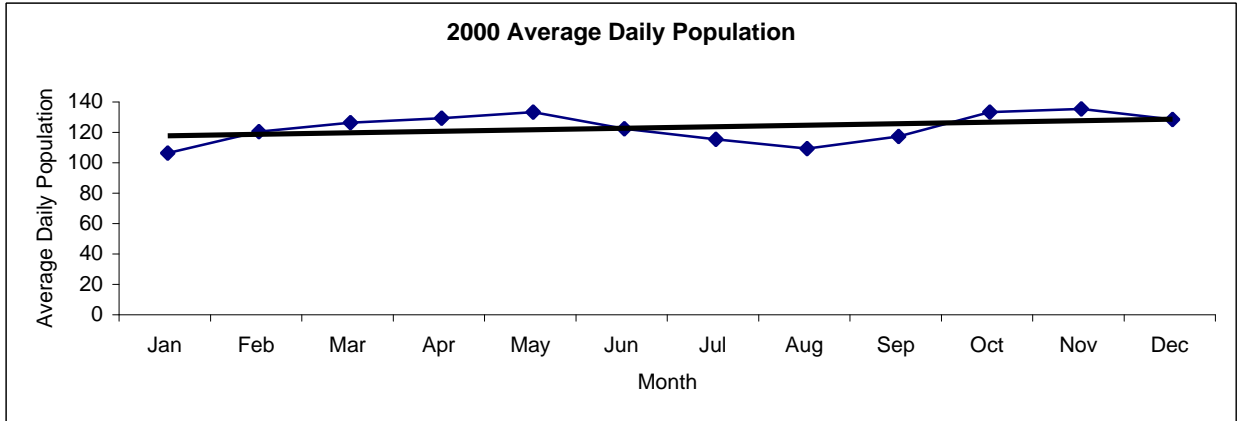


2002 Admissions	Jan	Feb	Mar	Apr	May	Jun	Jul	Aug	Sep	Oct	Nov	Dec	Total
	193	160	181	185	213	145	177	173	179	206	183	164	2159

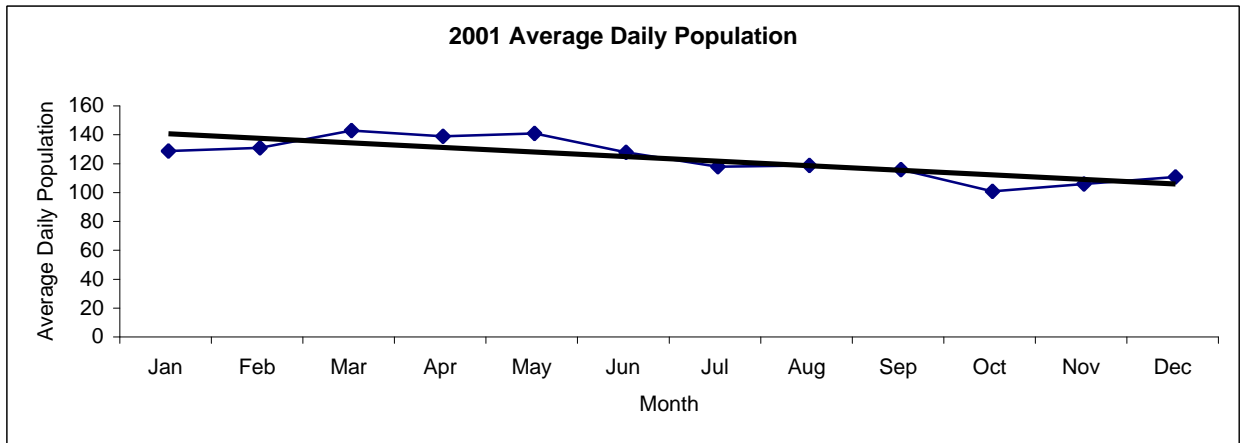


**San Francisco Juvenile Probation
Juvenile Hall Average Daily Population By Month
(2000-2002)**

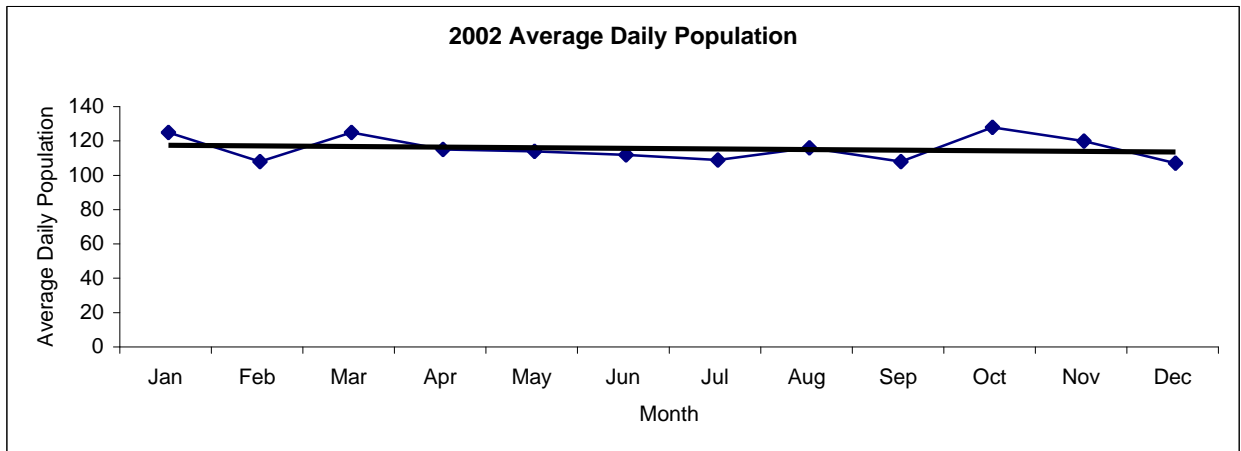
2000 Avg. Daily Pop.	Jan	Feb	Mar	Apr	May	Jun	Jul	Aug	Sep	Oct	Nov	Dec	Total
	103	117	123	126	130	119	112	106	114	130	132	125	120



2001 Avg. Daily Pop.	Jan	Feb	Mar	Apr	May	Jun	Jul	Aug	Sep	Oct	Nov	Dec	Total
	120	122	134	130	132	119	109	110	107	92	97	102	115

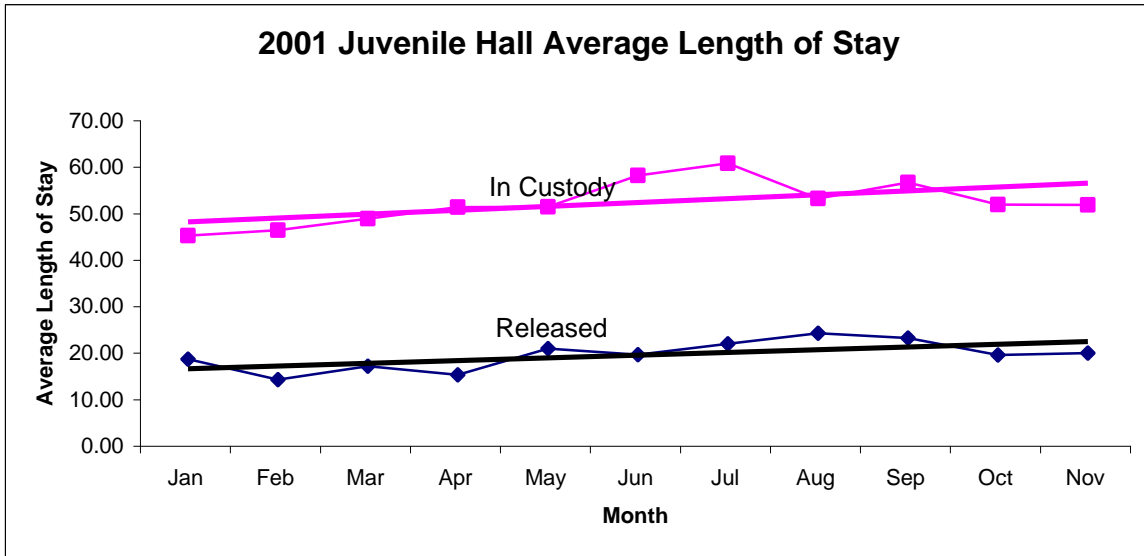


2002 Avg. Daily Pop.	Jan	Feb	Mar	Apr	May	Jun	Jul	Aug	Sep	Oct	Nov	Dec	Total
	113	96	113	103	102	100	97	104	96	116	108	95	104

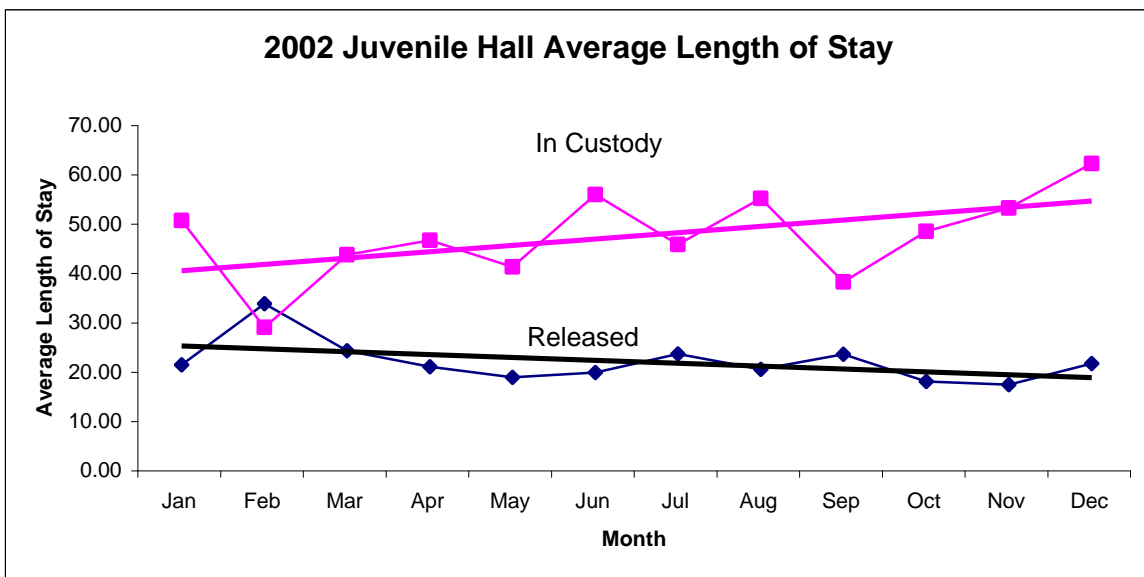


San Francisco Juvenile Probation
Juvenile Hall Average Length of Stay By Month
 (2001-2002)

2001 Avg. Length of Stay	Jan	Feb	Mar	Apr	May	Jun	Jul	Aug	Sep	Oct	Nov	Dec	Total
¹ Released	17.44	13.03	15.87	14.05	19.66	18.37	20.73	22.97	21.94	18.33	18.71	20.12	18.44
² In Custody	44.00	45.18	47.66	50.13	50.18	56.93	59.56	51.97	55.41	50.67	50.61	42.32	50.39



2002 Avg. Length of Stay	Jan	Feb	Mar	Apr	May	Jun	Jul	Aug	Sep	Oct	Nov	Dec	Total
¹ Released	18.05	30.44	20.88	17.65	15.50	16.45	20.22	17.15	20.16	14.67	14.03	18.30	18.63
² In Custody	47.30	25.63	40.35	43.29	37.86	52.57	42.41	51.77	34.82	45.11	49.85	58.85	44.15



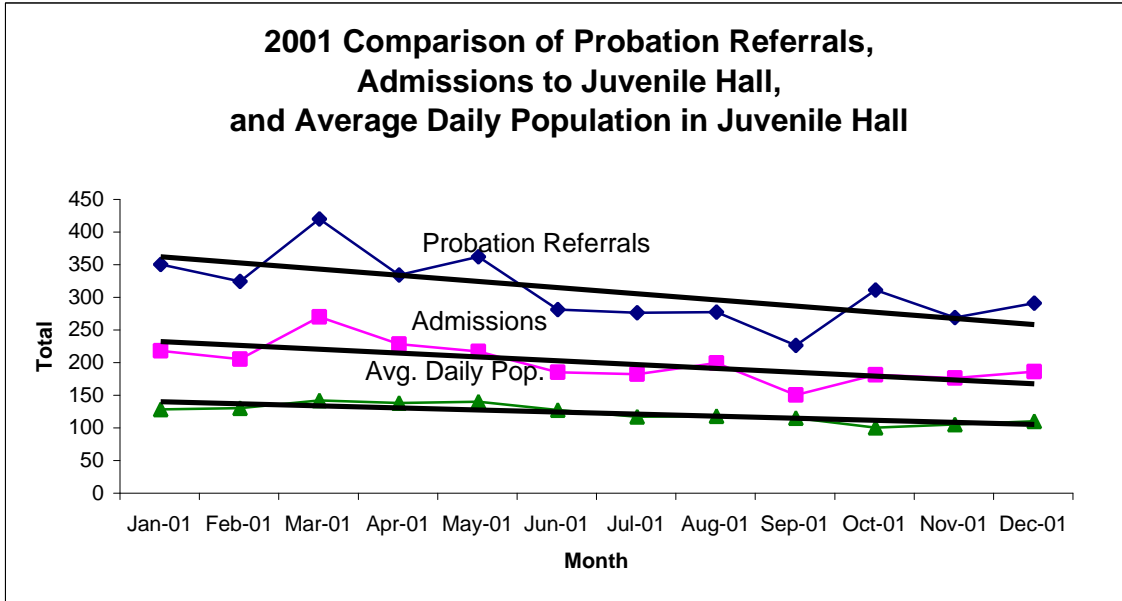
Notes: Less than one day of stay is calculated as one day.

¹ Length of stay is calculated according to release date for those who are released.

² For those still in custody, length of stay is calculated at the last day of the month.

San Francisco Juvenile Probation

	Jan-01	Feb-01	Mar-01	Apr-01	May-01	Jun-01	Jul-01	Aug-01	Sep-01	Oct-01	Nov-01	Dec-01
Probation Referrals	342	316	412	326	354	273	268	269	218	303	261	283
JH Admissions	210	197	262	220	209	177	174	191	142	173	168	178
JH Avg. Daily Pop.	120	122	134	130	132	119	109	110	107	92	97	102



	Jan-02	Feb-02	Mar-02	Apr-02	May-02	Jun-02	Jul-02	Aug-02	Sep-02	Oct-02	Nov-02	Dec-02
Probation Referrals	284	285	291	269	346	211	260	250	270	311	284	242
JH Admissions	192	160	181	185	213	140	177	172	179	206	183	164
JH Avg. Daily Pop.	113	96	113	103	102	100	97	104	96	116	108	95

