

City and County of San Francisco



Juvenile Probation Department

---

## **Monthly Report for August 2004**

Presented to the Juvenile Probation Commission

September 22<sup>nd</sup>, 2004

# Table of Contents

---

## Section I Summary Reports

Juvenile Hall, Log Cabin Ranch Summary Statistics.....	1
Community Programs Summary Statistics .....	2
Probation Services Summary Statistics.....	4

## Section II Current Month General Detail

Probation Referrals, Juvenile Admissions And Average Daily Population .....	6
Juvenile Hall Admissions and Average Daily Population.....	7
Commitments to out-of-home placement.....	8
Commitments to California Youth Authority.....	9
Log Cabin Ranch Admissions and Average Daily Population.....	10
Probation Referrals .....	11
Juvenile Hall And Log Cabin Ranch Incident Report .....	12
Juvenile Hall And Log Cabin Ranch Grievances Report.....	13
Bay Area Resident Juvenile Hall Comparison .....	14
Juvenile Hall Admissions.....	15
Juvenile Hall Detainees by Detention Reason.....	16
Juvenile Hall Average Daily Population by Rated Capacity.....	17
Juvenile Hall Average Length of Stay .....	18

## Section III Demographics

Juvenile Hall Detainees by Sex and Race/Ethnic Origin.....	19
Juvenile Hall Detainees by Age .....	20
Juvenile Hall Detainees by Age and Sex.....	21
Juvenile Hall Detainees by Geographic Residence of Youth.....	22
Juvenile Hall Detainees by Race/Ethnic Origin and Sex.....	23

## **Section IV**

### **Historical Information**

2001-2003 Probation Referrals .....	24
2002-2003 Juvenile Hall Admissions .....	25
2002-2003 Juvenile Hall Average Daily Population.....	26
2002-2003 Juvenile Hall Average Length of Stay by Month.....	27



# **Section I**

# **Summary Reports**

## Summary Report for the Month of August 2004

<b>Juvenile Hall</b>	<i>July 2003</i>	<i>July 2004</i>	<i>August 2003</i>	<i>August 2004</i>	<i>YTD 2003</i>	<i>YTD 2004</i>
Admissions	150	137	159	121	1348	1287
Average Daily Population	89	94	80.48	84	89.51	97.50
Average Length of Stay (Releases)	22.21	27.41	16.41	19.52	17.24	16.98
Average Length of Stay (In Custody)	52.13	62.37	46.67	67.37	48.69	59.28
Releases	155	251	157	133	1351	1288
<b>Log Cabin Ranch</b>						
Admissions:						
First Time Commitments	6	3	2	1	18	17
Recommitments	0	0	0	0	1	0
<i>Total</i>	<b>6</b>	<b>3</b>	<b>2</b>	<b>1</b>	<b>19</b>	<b>17</b>
Releases:						
Graduated	3	2	1	3	24	20
Escape	0	0	0	0	0	0
Other releases	2	0	0	0	10	2
<i>Total</i>	<b>5</b>	<b>2</b>	<b>1</b>	<b>3</b>	<b>34</b>	<b>22</b>
Average Daily Population	20	16	23	14	24	16
<b>Grievances Filed</b>						
Juvenile Hall:						
B1	0	*	0	0	4	3
B2	0	*	0	7	0	15
B3	0	*	0	0	0	1
B4	0	*	1	2	14	3
B5	0	*	0	5	5	10
G2 (CO-ED)	0	*	0	0	3	2
<i>Total</i>	<b>0</b>	*	<b>1</b>	<b>14</b>	<b>26</b>	<b>34</b>
Log Cabin Ranch	<b>0</b>	<b>0</b>	<b>0</b>	<b>0</b>	<b>0</b>	<b>0</b>
<b>Incident Reports</b>						
Juvenile Hall	16	6	10	4	106	90
Log Cabin Ranch	0	5	0	0	8	0
<i>Total</i>	<b>16</b>	<b>11</b>	<b>10</b>	<b>4</b>	<b>114</b>	<b>90</b>

\*IT did not receive the grievances report for the month of July 2004.

## Summary Report for the Month of August 2004

<b>Community Programs</b>	<i>Program Vacancies by Agency on August 2004</i>	<i>Active in program July 2003</i>	<i>Active in Program July 2004</i>	<i>Active in Program August 2003</i>	<i>Active in Program August 2004</i>
<b>IHBS Monthly Client Count</b>					
BayView Hunters Point Foundation	2	16	13	16	13
Chinatown Youth Center	2	10	13	10	13
Morrisania West, Inc.	3	11	12	11	12
Samoan Community Development Center	15	0	9	0	0
Potrero Hill Neighborhood House	6	11	7	11	9
Instituto Familiar de La Raza	8	22	22	22	22
Vietnamese Youth Development Center	0	5	7	7	7
Brothers Against Guns	0	0	11	5	30
<i>Total</i>	<b>36</b>	<b>75</b>	<b>94</b>	<b>82</b>	<b>106</b>
<i>August 2004 Percent Program Utilization</i>	<b>79%</b>				
<i>August 2004 Percent Change from last report</i>	<b>6%</b>				

Note: Please note that the total number of slots for IHBS is 135.

Summary Report for TANF and Girls Programs  
Month: July 2004

PROGRAM	ANNUAL GOAL	NUMBER SERVED
California Community Dispute Services: Youth Accountability Boards	40	11
CARECEN: Tattoo Removal and Case Management	45	28
Center for Young Women's Development: Girls Services	40	35
Community Works – Girls Diversion Program	24	0
Community Works – Girls Therapeutic Arts Curriculum in Juvenile Hall	100	15
Community Works – ROOTS Support for Children of Incarcerated Parents	34	13
Edgewood Kinship Support Network	30	12
Family Restoration House: Life Skills	30	15
Girls 2000: Girls Services and Family Support Services	20	20
Instituto Familiar de la Raza – Case Management	10	2
Mission Neighborhood Center: Young Queens on the Rise – Girls Services	35	28
Performing Arts Workshop: Arts Education at Impact High School	30	23
SAGE: Girls Services	25	8
Samoan Community Development Center: Anger Management	75	0
Special Services for Groups – Occupational Therapy Training Program	50	47
United Way/Girls Justice Initiative: Case Management & Inside Mentoring Program	300 72	48 24
Urban Services YMCA: Bayview Beacon Truancy Support	50	0
YGCIC GED & Focus Vocational Programs	105	15
YWCA – CITS and FITS Girls Mentorship	64	0

Note: Contracts were not approved until September 2004

## Summary Report for the Month of August 2004

<b>Probation Services</b>	<i>July 2004</i>	<i>August 2004</i>	<i>Year To Date 2004</i>
Probation Referrals	251	184	2033
Petitions	80	67	659
Selected Court Dispositions:			
California Youth Authority	2	1	9
Log Cabin Ranch	2	2	16
Out of Home Placement	18	20	130
Other Probation	35	23	230
Violation of Probation Petitions Filed	17	16	127
California Youth Authority Monthly Count			
Institutions:			
Males	42	42	
Females	3	3	
<b>Total</b>	<b>45</b>	<b>45</b>	
Parole:			
Males	26	25	
Females	2	2	
<b>Total</b>	<b>28</b>	<b>27</b>	



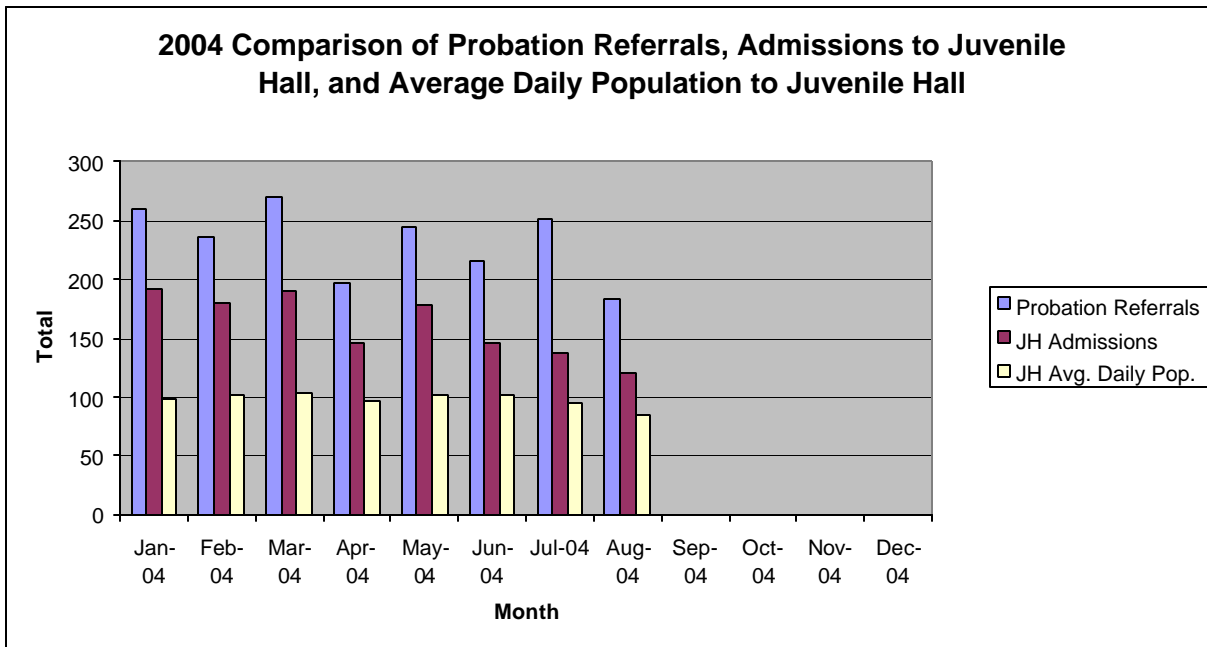
## Summary Report for the Month of August 2004

<b>Probation Services</b>			
<b>Caseload List</b>	July 2004	August 2004	August Average # Youth by PO
South Intake	223	225	45
North Intake	206	181	30
Prevention Diversion	181	156	17
Serious Offenders	100	97	16
Supervision	181	186	23
County Placement	22	24	24
Private Placement	189	189	17
Drug Court	24	23	23
Family Integrated Treatment Services	115	110	13
<i>Total</i>	<b>1241</b>	<b>1191</b>	<b>23</b>
<b>Special Services Unit</b>	New	Closed	Active at end of Month
Record Sealings	9	2	149
Stepparent Adoptions	2	1	55
Terminations	2	0	15
Marriage Consents	0	1	1
Custody Evaluations	0	0	0
	Entered	Completed	Active at end of Month
Community Service	68	1	1187
		Referred	Completed at end of Month
COPS		8	7
Street Law (Next class starts 9/11/04)		0	0
Theft Awareness (Next class starts 9/11/04)		0	0
Anger Management for boys (Next class 9/8/04)		0	0
Anger Management for girls (Next class 9/7/04)		0	0
Life Management Skills (Next class starts 9/04)		0	0
Kids Turn Non-Violent Family Skills (still in session)		4	0
Information, Record Checks, Research & Photo Copying Juvenile Records For:	July 2004	August 2004	Year to Date 2004
Job Corps, Probation Departments, Military, Law Enforcement,			
Misc., (letters, Memos, Forms, etc.)	143	146	1059

**Section II**  
**Current Month**  
**General Detail**

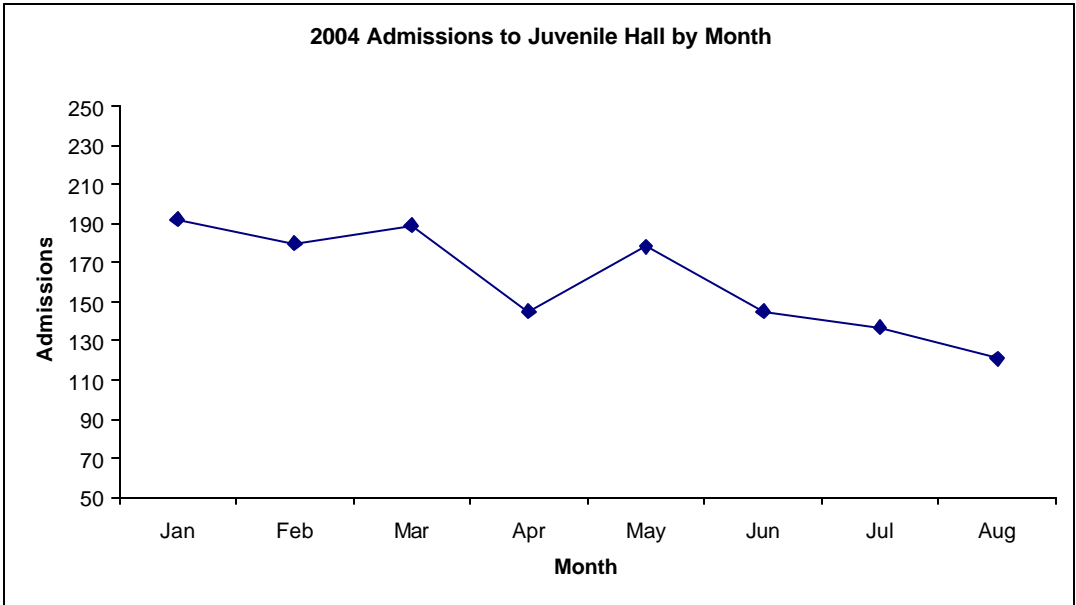
## San Francisco Juvenile Probation

	Jan-04	Feb-04	Mar-04	Apr-04	May-04	Jun-04	Jul-04	Aug-04	Sep-04	Oct-04	Nov-04	Dec-04
Probation Referrals	259	236	270	197	245	216	251	184				
JH Admissions	192	180	189	145	178	145	137	121				
JH Avg. Daily Pop.	98	101	103	96	101	101	94	84				

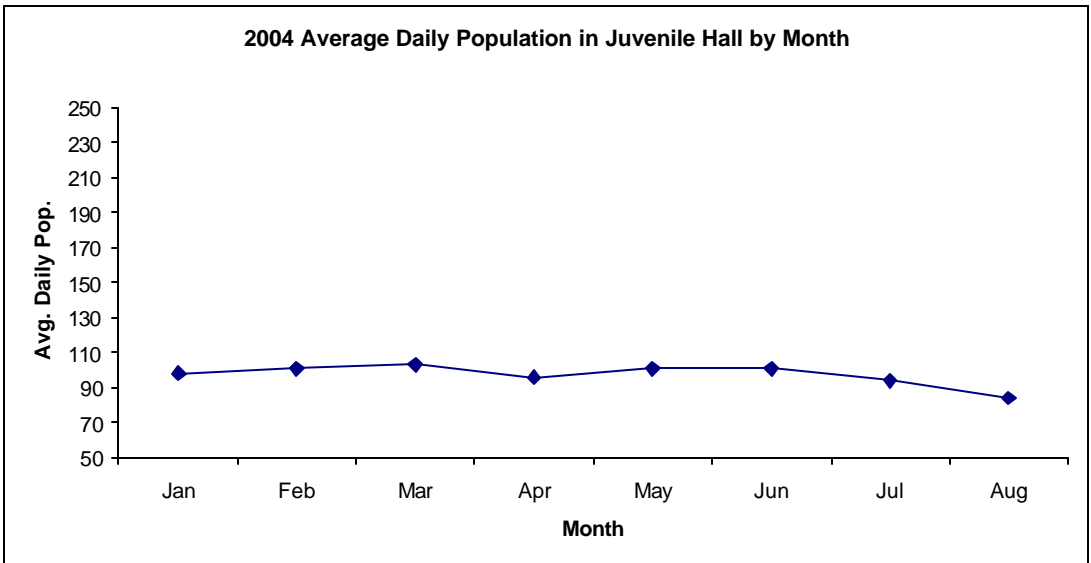


**San Francisco Juvenile Probation  
Admissions and Average Daily Population  
In Juvenile Hall  
(Calendar Year 2004)**

Admissions	Jan	Feb	Mar	Apr	May	Jun	Jul	Aug	Sep	Oct	Nov	Dec	Total
2004	192	180	189	145	178	145	137	121					<b>1287</b>



Avg. Daily Pop.	Jan	Feb	Mar	Apr	May	Jun	Jul	Aug	Sep	Oct	Nov	Dec	Total
2004	98	101	103	96	101	101	94	84					<b>97</b>

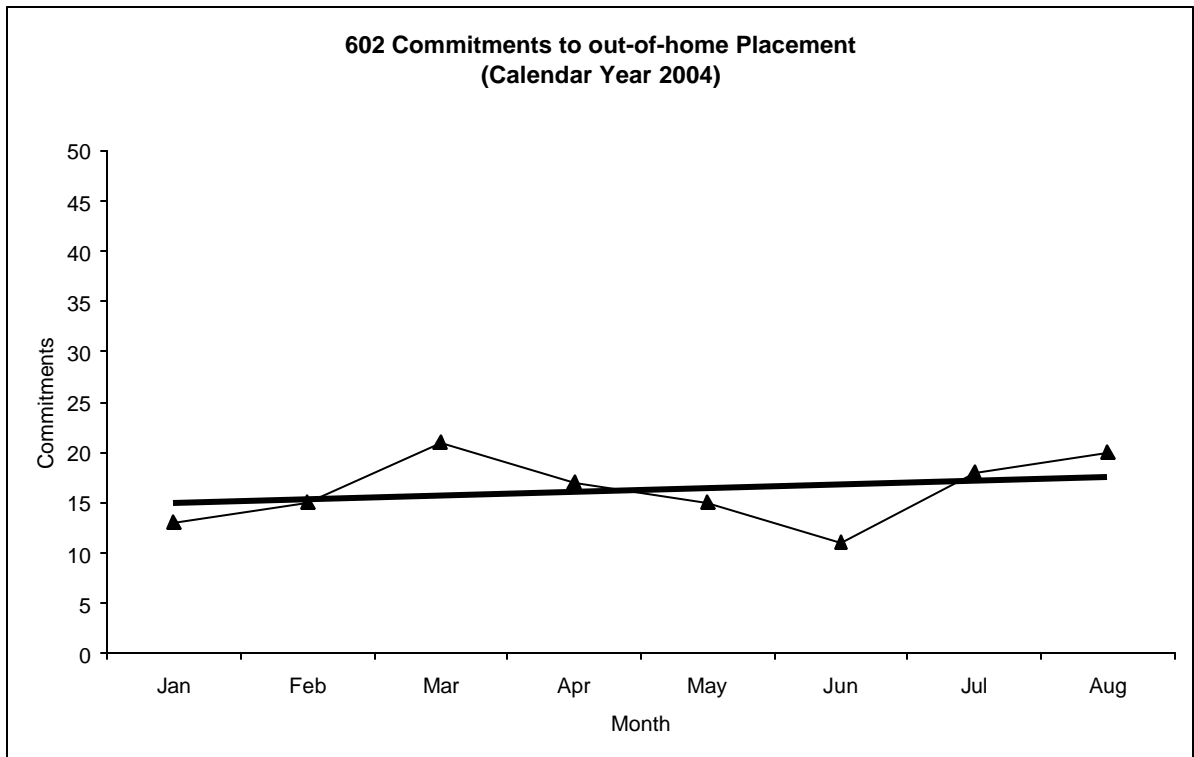


# Out-of-Home Placement<sup>1</sup>

## Commitments of 602's

### Calendar Year 2004

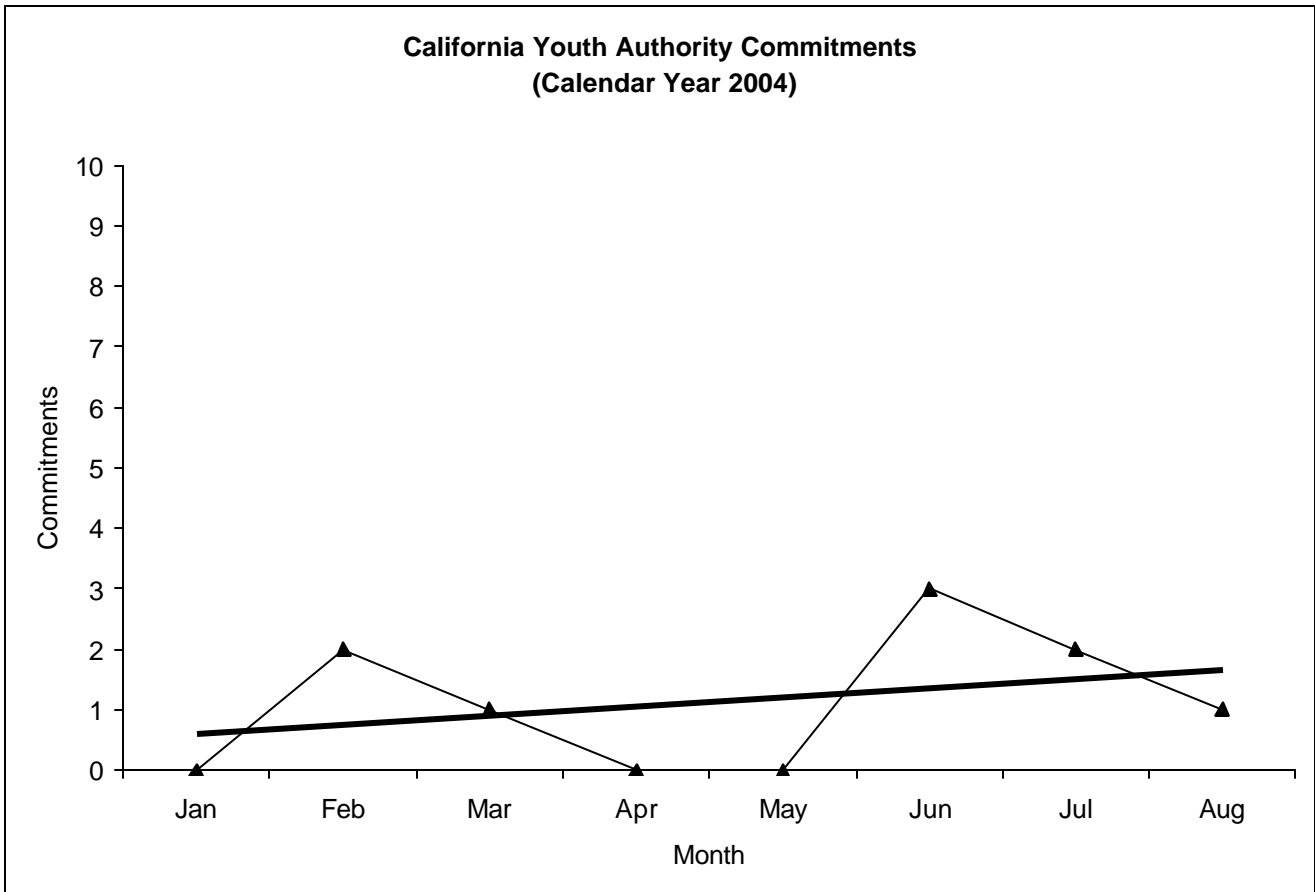
Commitments	Jan	Feb	Mar	Apr	May	Jun	Jul	Aug	Sep	Oct	Nov	Dec	Total
2004	13	15	21	17	15	11	18	20					130



<sup>1</sup> This report is based on 602 Commitments to out-of-home placements. If there is a 601 commitment, it will show as a footnote here. Figures are regularly updated to include reports from previous reporting periods.

# California Youth Authority Commitments (Calendar Year 2004)

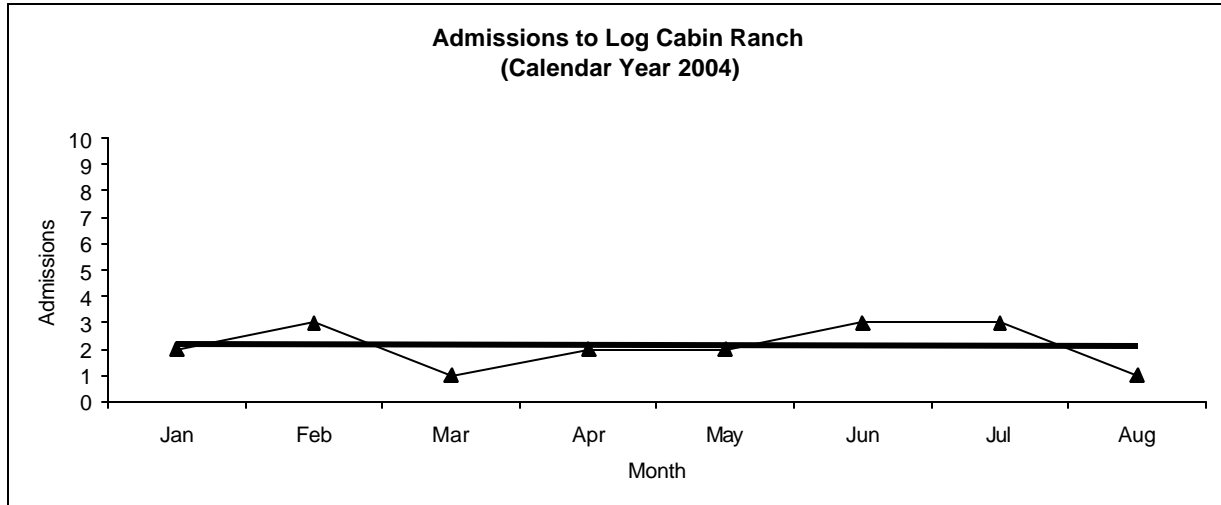
Commitments	Jan	Feb	Mar	Apr	May	Jun	Jul	Aug	Sep	Oct	Nov	Dec	Total
2004	0	2	1	0	0	3	2	1					9



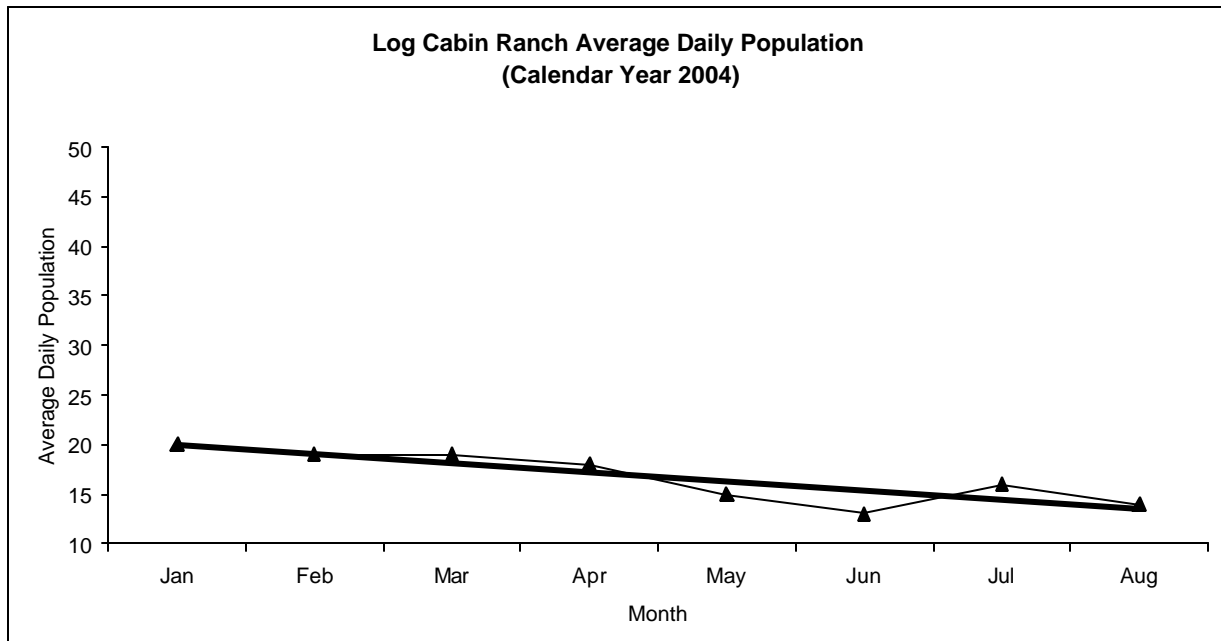
# Log Cabin Ranch

## Admissions and Average Daily Population (Calendar Year 2004)

<b>Admissions</b>	Jan	Feb	Mar	Apr	May	Jun	Jul	Aug	Sep	Oct	Nov	Dec	<b>Total</b>
2004	2	3	1	2	2	3	3	1					<b>17</b>



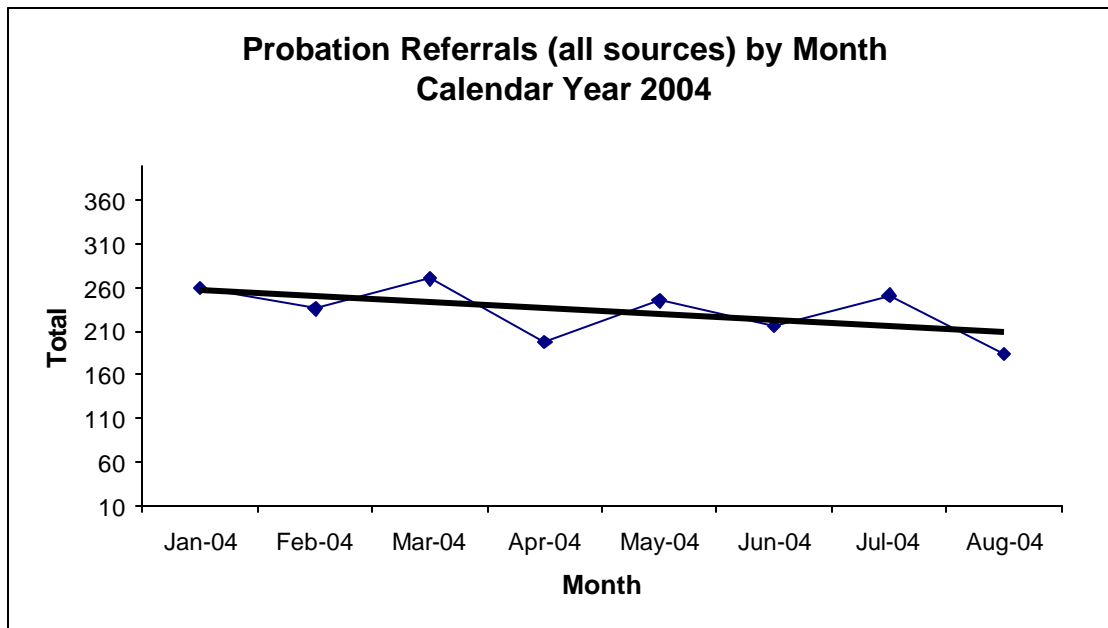
<b>Avg. Daily Pop.</b>	Jan	Feb	Mar	Apr	May	Jun	Jul	Aug	Sep	Oct	Nov	Dec	<b>Total</b>
2004	20	19	19	18	15	13	16	14					<b>16.75</b>



# Calendar Year 2004

## Probation Referrals (all sources) by Month (602 W&I)

Jan-04	259
Feb-04	236
Mar-04	270
Apr-04	197
May-04	245
Jun-04	216
Jul-04	251
Aug-04	184
Sep-04	
Oct-04	
Nov-04	
Dec-04	





SAN FRANCISCO JUVENILE PROBATION DEPARTMENT  
 MONTHLY INCIDENT REPORT FORM  
 MONTH/YEAR: AUGUST 2004

<b>Log Cabin Ranch</b>	Battery on Staff	Injury to Staff due to Restraint of Minor	Fight	Battery Youth on Youth	Attempted Escape	AWOL	Attempted Suicide	Serious Contraband (Weapon Illegal Drug)
	<b>0</b>	<b>0</b>	<b>0</b>	<b>0</b>	<b>0</b>	<b>0</b>	<b>0</b>	<b>0</b>
	Battery on Staff with Injury	Fire	Fight with Injury	Battery Youth on Youth with Injury	Escape	Death	Suicide	Major Property Destruction
<b>0</b>	<b>0</b>	<b>0</b>	<b>0</b>	<b>0</b>	<b>0</b>	<b>0</b>	<b>0</b>	<b>0</b>
<b>Juvenile Hall</b>	Battery on Staff	Injury to Staff due to Restraint of Minor	Fight	Battery Youth on Youth	Attempted Escape	AWOL	Attempted Suicide	Serious Contraband (Weapon Illegal Drug)
	<b>0</b>	<b>0</b>	<b>2</b>	<b>0</b>	<b>0</b>	<b>0</b>	<b>0</b>	<b>0</b>
	Battery on Staff with Injury	Fire	Fight with Injury	Battery Youth on Youth with Injury	Escape	Death	Suicide	Major Property Destruction
<b>0</b>	<b>0</b>	<b>2</b>	<b>0</b>	<b>0</b>	<b>0</b>	<b>0</b>	<b>0</b>	<b>0</b>

## Grievances Filed August 2004

### San Francisco Juvenile Probation Department

#### Juvenile Hall

Grievance Documents:



**Grievances Filed August 2004  
San Francisco Probation Department  
From the office of the Ombudsman.**

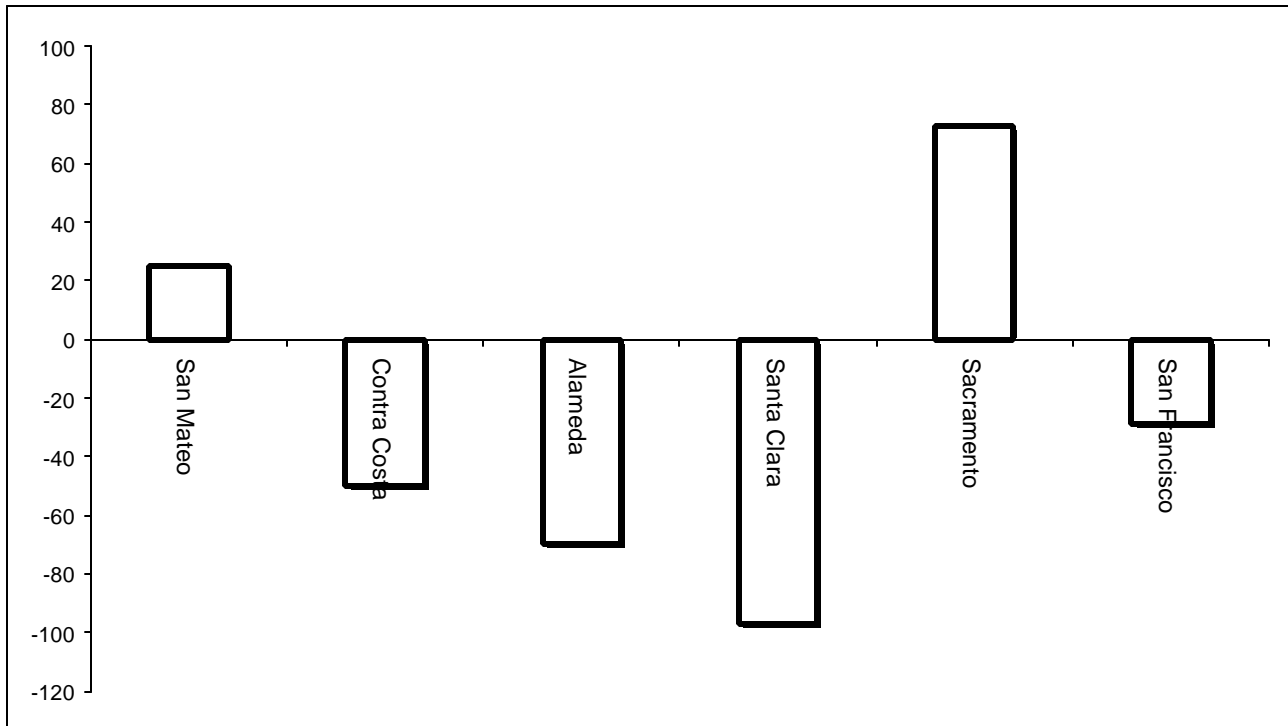
<i>Area of Infraction</i>	<i>Title 15 Article/Section</i>	<i>Girls Unit</i>	<i>B2</i>	<i>B3</i>	<i>B4</i>	<i>B5</i>	<i>TOTAL</i>
<b>Health Services</b>	<b>8.1433</b>	0	0	0	0	0	<b>0</b>
<b>Discipline Process</b>	<b>7.1391</b>	0	5	0	1	1	<b>7</b>
<b>Meritless</b>	<b>12.2</b>	0	2	0	1	0	<b>3</b>
<b>Harassment</b>	<b>12.2</b>	0	0	0	0	4	<b>4</b>
<b>Total</b>		<b>0</b>	<b>7</b>	<b>0</b>	<b>2</b>	<b>5</b>	<b>14</b>

#### Log Cabin Ranch

<b>Type</b>	<b>Log Cabin Ranch</b>
Food/Snacks	0
Laundry	0
Personal Property	0
Phone Calls	0
Procedures	0
Head Call	0
Discipline	0
Complaints vs. Staff	0
Cottage Change	0
Medical	0
School	0
Probation	0
Miscellaneous	0
<b>Total</b>	<b>0</b>

## Bay Area Resident Juvenile Hall Comparison Over/Under Capacity

on September 3<sup>rd</sup>, 2004

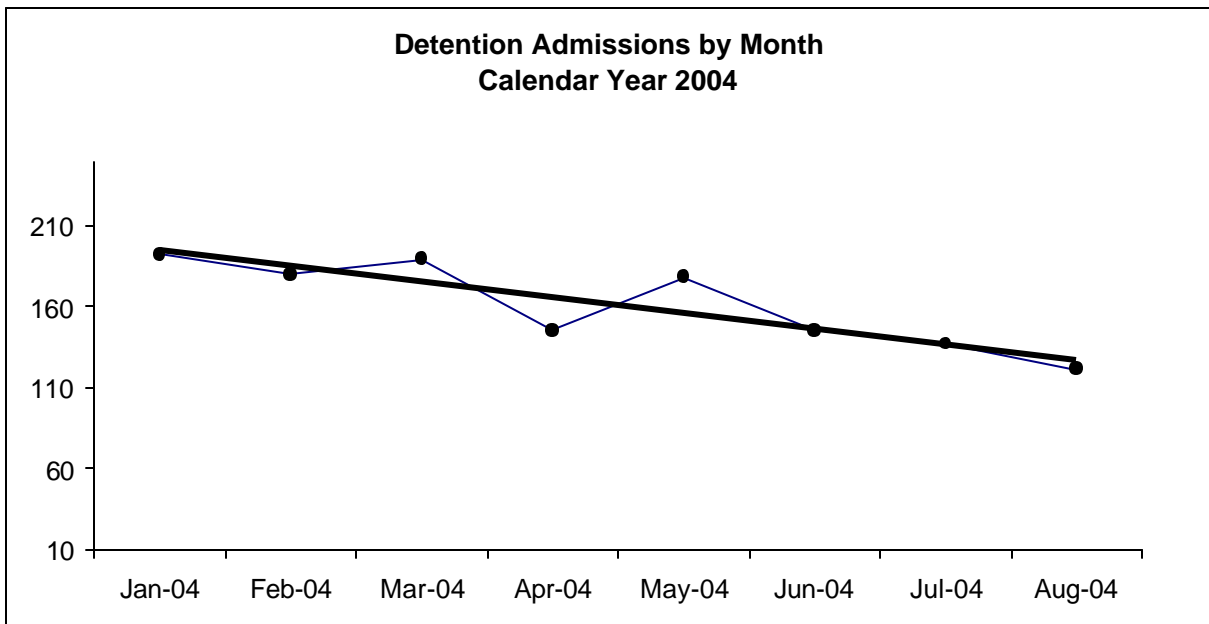


	Rated Capacity	Actual	Over/Under Capacity
San Mateo	130	155	25
Contra Costa	160	110	-50
Alameda	288	218	-70
Santa Clara	329	232	-97
Sacramento	256	329	73
San Francisco	104	75	-29

# Juvenile Hall Admissions by Month Calendar Year 2004

## Detention Admissions by Month

Jan-04	192
Feb-04	180
Mar-04	189
Apr-04	145
May-04	178
Jun-04	145
Jul-04	137
Aug-04	121
Sep-04	
Oct-04	
Nov-04	
Dec-04	

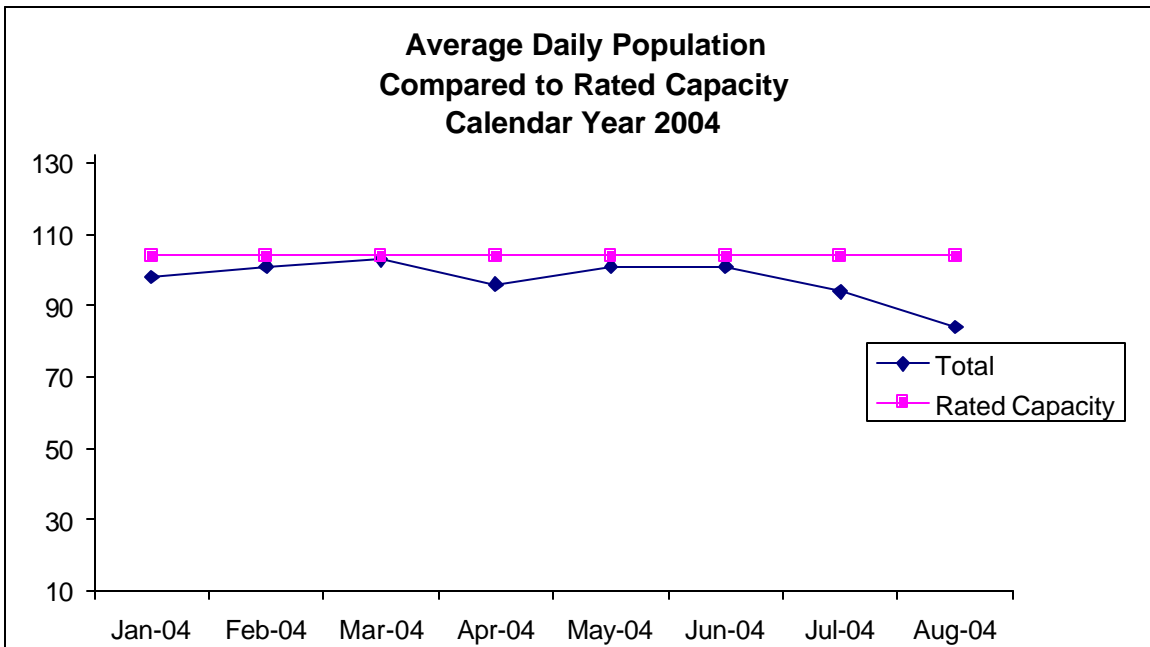


**Characteristics of Juvenile Hall Detainees on August 31<sup>st</sup>, 2004  
Using CJIS Code From the Department of Justice**

Detention Reason	Offense Code	MF	Count	%
MURDER	187 (A) PC	F	3	3.70%
ATTEMPTED MURDER	664 /187 (A) PC	F	3	3.70%
ORAL COPULATION IN CONCERT W/FORCE/ETC	288 A (D)(1) PC	F	3	3.70%
RAPE BY FORCE/FEAR/ETC	261 (A)(2) PC	F	1	1.23%
LEWD OR LASCIVIOUS ACTS W/CHILD UNDER 14 YEARS	288 (A) PC	F	2	2.47%
CARJACKING	215 (A) PC	F	2	2.47%
ROBBERY	212.5 PC	F	2	2.47%
TRANSPORT/SELL NARCOTIC/CONTROLLED SUBSTANCE	11352 (A) HS	F	3	3.70%
POSSESS/PURCHASE COCAINE BASE FOR SALE	11351.5 HS	F	3	3.70%
BURGLARY:FIRST DEGREE	459 PC	F	1	1.23%
ROBBERY:SECOND DEGREE	212.5(C) PC	F	12	14.81%
INFLICT CORPORAL INJURY ON SPOUSE/COHABITANT	273.5 PC	F	1	1.23%
ASSAULT WITH FIREARM ON PERSON	245 (A)(2) PC	F	1	1.23%
ASSAULT:DEADLY WEAPON OR FORCE:POSSIBLE GREAT BODILY INJ	245 (A) PC	F	1	1.23%
FORCE OR ADW NOT FIREARM:GBI LIKELY	245 (A)(1) PC	F	7	8.64%
POSSESS NARCOTIC CONTROLLED SUBSTANCE	11350 (A) HS	F	1	1.23%
CARRY CONCEALED WEAPON IN VEHICLE W/PRIOR FELONY CONVICTION	12025 (A)(1) PC	F	1	1.23%
THREATEN CRIME W/INTENT TO TERRORIZE	422 PC	F	2	2.47%
BURGLARY:SECOND DEGREE	459 PC	F	1	1.23%
GRAND THEFT	484 (A) PC	F	1	1.23%
GRAND THEFT FROM PERSON	487 (C) PC	F	1	1.23%
TAKE VEHICLE W/O OWNER'S CONSENT/VEHICLE THEFT	10851 (A) VC	F	4	4.94%
POSSESS ANY ASSAULT WEAPON	12280 (B) PC	F	1	1.23%
OBSTRUCT/RESIST/ETC PUBLIC/PEACE OFFICER/EMERGENCY MED TECH	148 (A)(1) PC	M	1	1.23%
DISORDERLY CONDUCT:PROSTITUTION	647 (B) PC	M	2	2.47%
LOITER:INTENT:PROSTITUTION	653.22(A) PC	M	1	1.23%
FAIL TO OBEY ORDER OF JUVENILE COURT 602 WI	777 (A)(2) WI	M	3	3.70%
CHANGE OF PLACEMENT/PLACEMENT FAILURE	737 WI	M	5	6.17%
COURT ORDER 602	CTORD 602 XX	X	9	11.11%
BENCH WARRANT	BENCH WARRANT	X	1	1.23%
WARRANT 602	WRNT602 XX	X	2	2.47%
		<b>Total</b>	<b>81</b>	<b>100.00%</b>

**Average Daily Population  
By Rated Capacity  
Calendar Year 2004**

	<b>Total</b>	<b>Rated Capacity</b>
<b>Jan-04</b>	98	104
<b>Feb-04</b>	101	104
<b>Mar-04</b>	103	104
<b>Apr-04</b>	96	104
<b>May-04</b>	101	104
<b>Jun-04</b>	101	104
<b>Jul-04</b>	94	104
<b>Aug-04</b>	84	104
<b>Sep-04</b>		104
<b>Oct-04</b>		104
<b>Nov-04</b>		104
<b>Dec-04</b>		104



## Juvenile Hall Average Length of Stay

For the Month of August 2004

### <sup>1</sup>Released

<b>Range of Days</b>	<i>1-10 days</i>	<i>11-20 days</i>	<i>21-30 days</i>	<i>30 or more days</i>	<b>Total</b>
# of Youth Released	88	19	6	20	133
% of Population	71.30%	8.70%	3.80%	16.30%	100%
# of Days	294	288	158	1856	2596
% of Total Days	11.33%	11.09%	6.09%	71.49%	100%
Average Length of Stay	3.34	15.16	26.33	92.80	19.52

### <sup>2</sup>In Custody

<b>Range of Days</b>	<i>1-10 days</i>	<i>11-20 days</i>	<i>21-30 days</i>	<i>30 or more days</i>	<b>Total</b>
# of Youth Detained	17	6	13	45	81
% of Population	38.60%	18.10%	12.60%	30.70%	100%
# of Days	98	92	310	4957	5457
% of Total Days	1.80%	1.69%	5.68%	90.84%	100%
Average Length of Stay	5.76	15.33	23.85	110.16	67.37

Notes: Less than one day of stay is calculated as one day.

<sup>1</sup>Length of stay is calculated according to release date for those who are released.

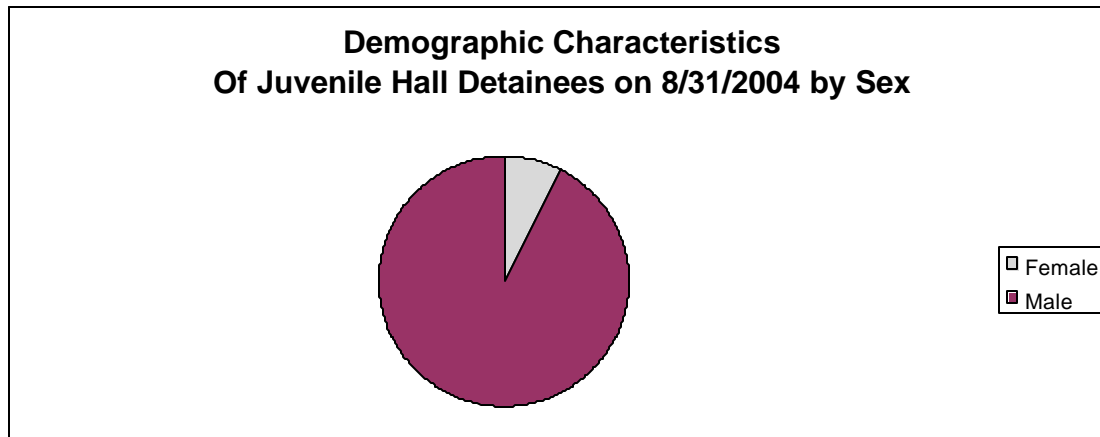
<sup>2</sup>For those still in custody, length of stay is calculated at the last day of the month.

# **Section III**

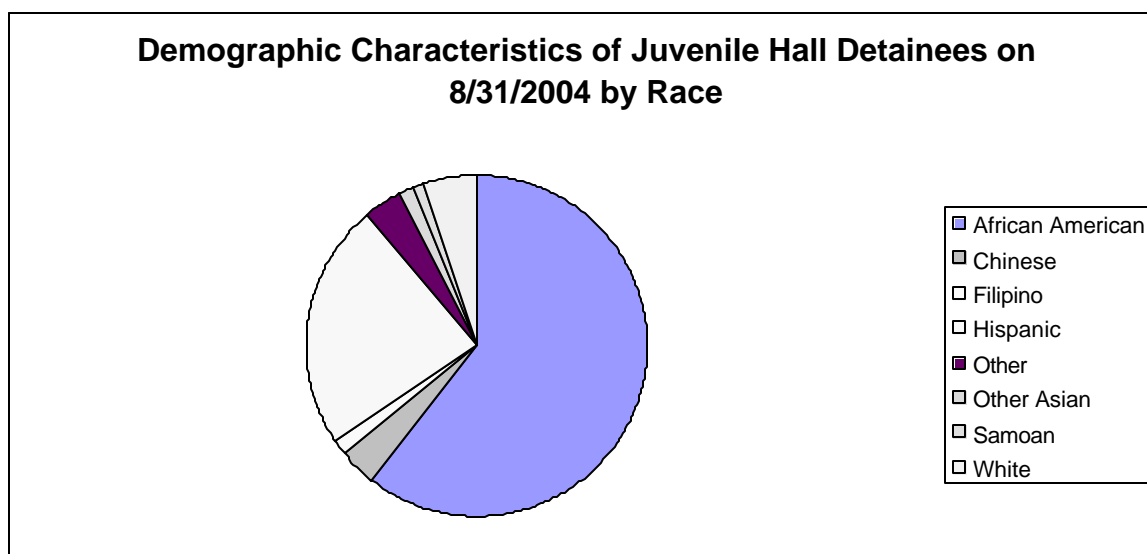
## **Demographics**



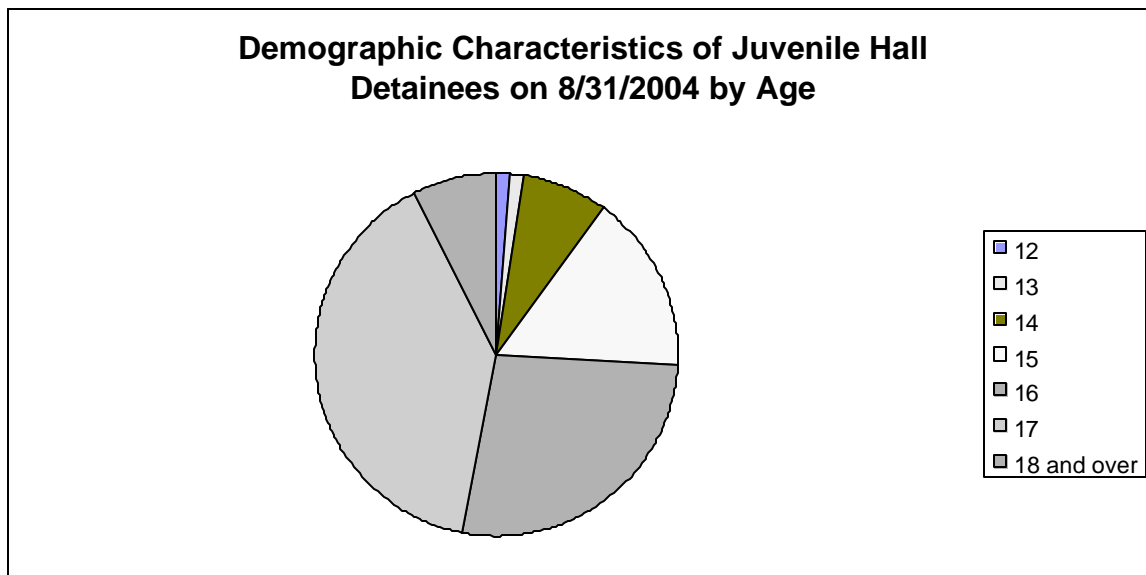
Sex	Frequency	Percent
Female	6	7.41%
Male	75	92.59%
<b>Total</b>	<b>81</b>	<b>100.00%</b>



Race/Ethnic Origin	Frequency	Percent
African American	49	60.49%
Chinese	3	3.70%
Filipino	1	1.23%
Hispanic	19	23.46%
Other	3	3.70%
Other Asian	1	1.23%
Samoan	1	1.23%
White	4	4.94%
<b>Total</b>	<b>81</b>	<b>100.00%</b>

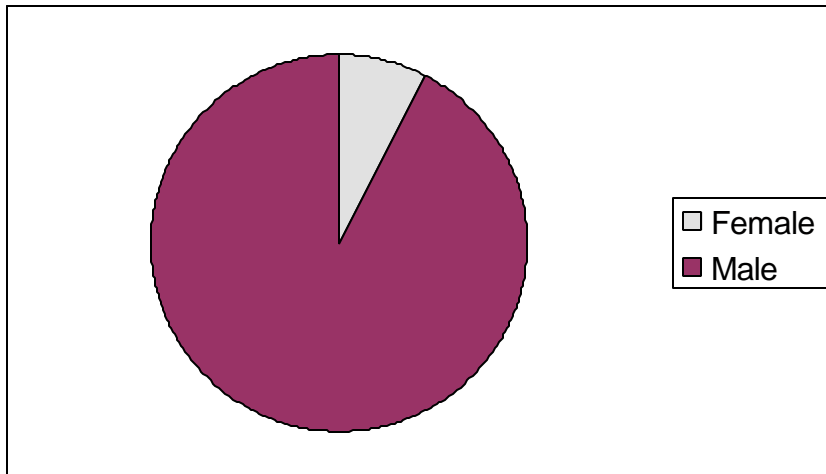


Age	Frequency	Percent
12	1	1.23%
13	1	1.23%
14	6	7.41%
15	13	16.05%
16	22	27.16%
17	32	39.51%
18 and over	6	7.41%
<b>Total</b>	<b>81</b>	<b>100.00%</b>



Demographic Characteristics of Juvenile Hall Detainees  
on 8/31/2004  
Age by Sex

Age	Female	Male	Total	
12	0	1	1	1.23%
13	0	1	1	1.23%
14	1	5	6	7.41%
15	1	12	13	16.05%
16	1	21	22	27.16%
17	3	29	32	39.51%
18 and over	0	6	6	7.41%
<b>Total</b>	<b>6</b>	<b>75</b>	<b>81</b>	<b>100.00%</b>
	<b>7.41%</b>	<b>92.59%</b>	<b>100.00%</b>	



Demographic Characteristics  
Of Juvenile Hall Detainees on August 31<sup>st</sup>, 2004

---

<b>Geographic Residence of Youth</b>	Frequency	Percent
Richmond	2	2.5
North of Market/Downtown	1	1.2
Western Addition	9	11.1
South of Market/Tenderloin	1	1.2
Sunset	2	2.5
Inner Mission	7	8.6
Potrero	1	1.2
Parkside	2	2.5
Ingleside (West of Twin Peaks)	5	6.2
Outer Mission	12	14.8
Bayview	19	23.5
*Non-San Francisco and Unavailable	20	24.7
	-----	-----
Total	81	100.0

<b>*Non-San Francisco and Unavailable</b>	Frequency	Percent
ANZA	1	5.0
CONCORD	1	5.0
DALY CITY	2	10.0
FRESNO	1	5.0
LAKEPORT	1	5.0
OAKLAND	3	15.0
PASO ROBLES	1	5.0
PITTSBURG	1	5.0
RICHMOND	1	5.0
UNAVAILABLE	7	35.0
VALLEJO	1	5.0
	-----	-----
Total	20	100.0

Demographic Characteristics  
Of Juvenile Hall Detainees on August 31<sup>st</sup>, 2004

---

**Race/Ethnic Origin by Sex**

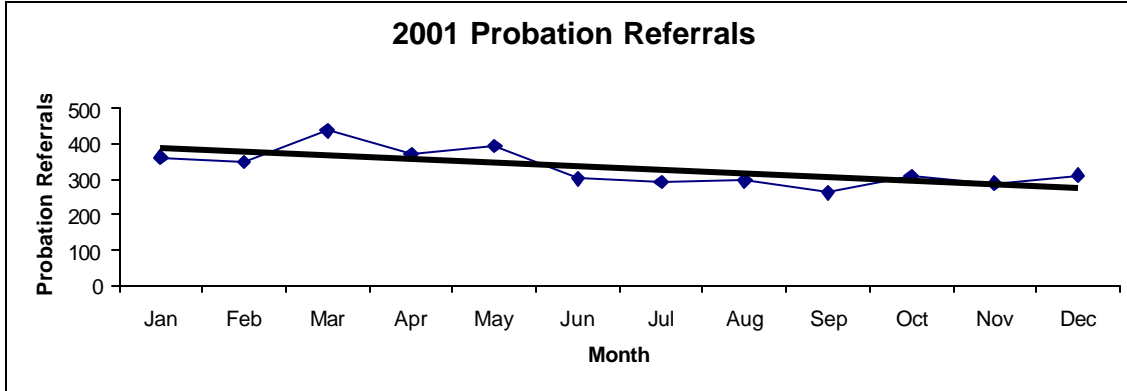
RACE	Count	SEX		Row Total
		Female	Male	
		F	M	
A OTHER ASIAN			1	1 1.2
B AFRICAN AMERICAN	2	47		49 60.5
C CHINESE	1	2		3 3.7
F FILIPINO			1	1 1.2
H HISPANIC	1	18		19 23.5
O OTHER	1	2		3 3.7
S SAMOAN			1	1 1.2
W WHITE	1	3		4 4.9
Column Total	6 7.4	75 92.6		81 100.0

# **Section IV**

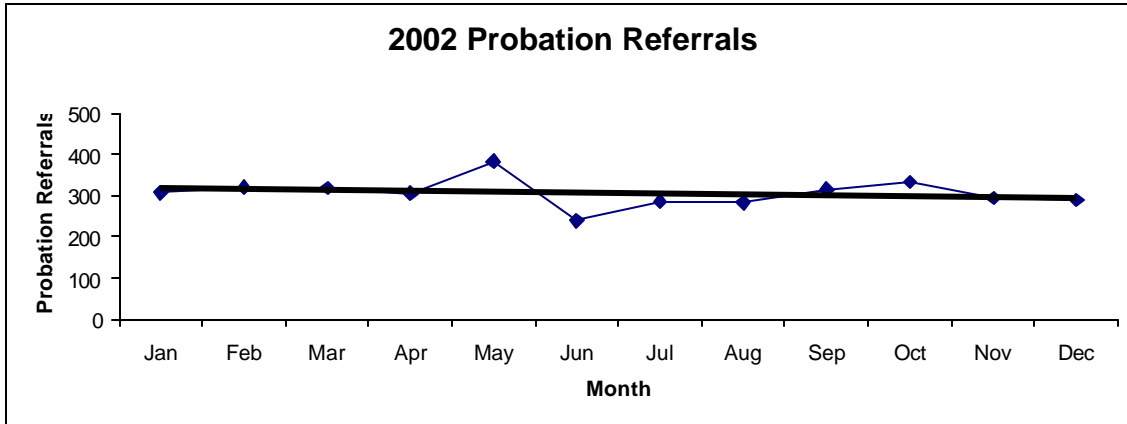
## **Historical Information**

San Francisco Juvenile Probation  
**Probation Referrals (all sources) By Month**  
 (2001-2003)

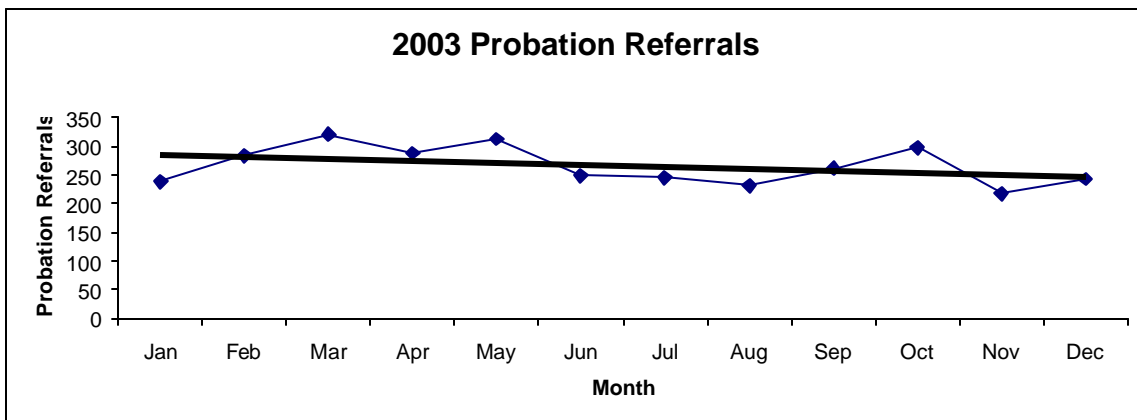
2001 Probation Referrals	Jan	Feb	Mar	Apr	May	Jun	Jul	Aug	Sep	Oct	Nov	Dec	Total
	361	348	437	370	394	301	292	296	262	309	287	311	<b>3968</b>



2002 Probation Referrals	Jan	Feb	Mar	Apr	May	Jun	Jul	Aug	Sep	Oct	Nov	Dec	Total
	308	320	318	305	384	240	286	283	315	333	294	289	<b>3675</b>

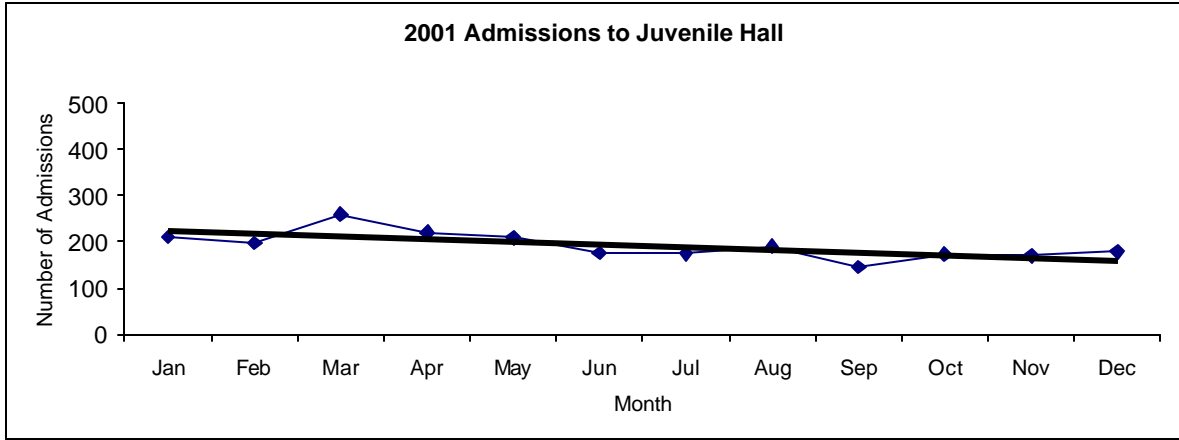


2003 Probation Referrals	Jan	Feb	Mar	Apr	May	Jun	Jul	Aug	Sep	Oct	Nov	Dec	Total
	238	283	320	288	313	248	245	231	261	297	218	243	<b>3185</b>

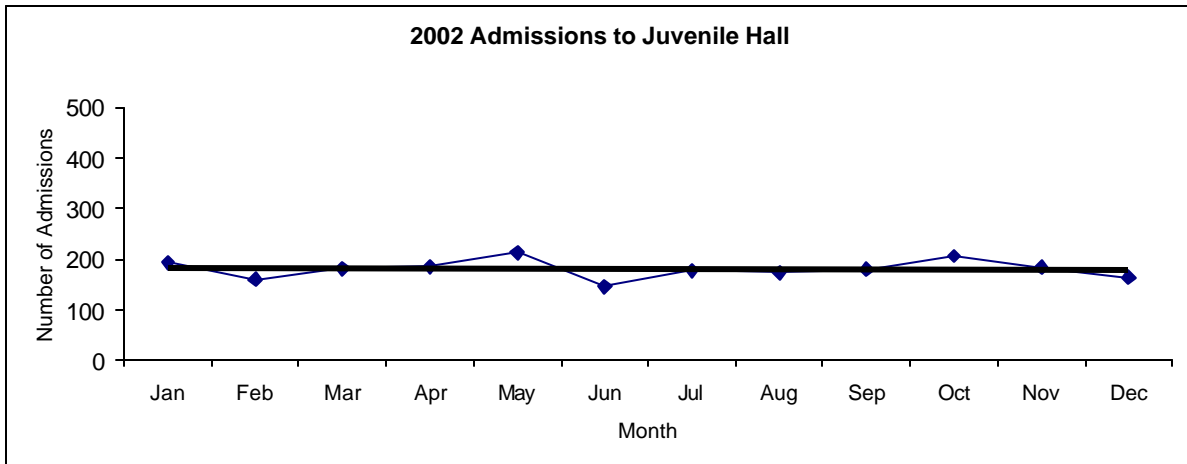


San Francisco Juvenile Probation  
**Juvenile Hall Admissions By Month**  
 (Calendar Years 2001-2003)

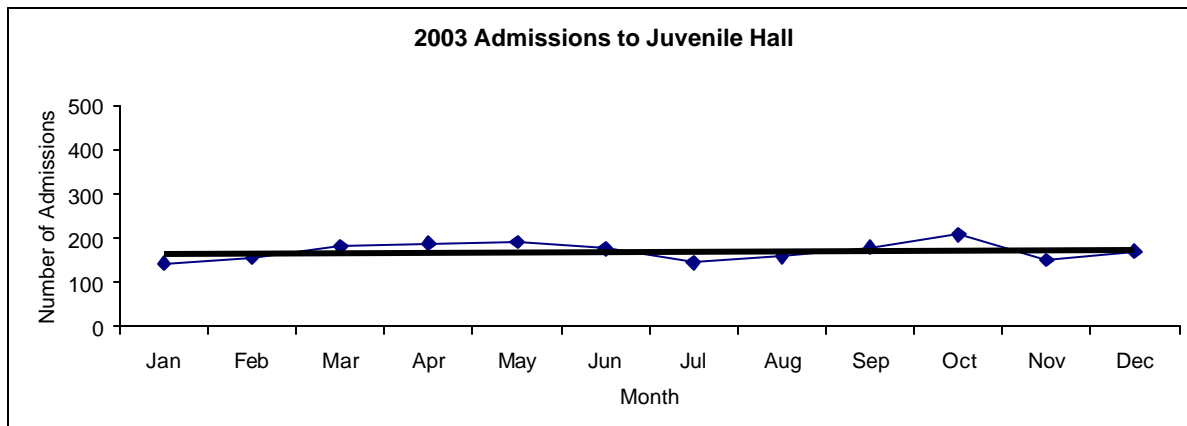
2001 Admissions	Jan	Feb	Mar	Apr	May	Jun	Jul	Aug	Sep	Oct	Nov	Dec	Total
	210	197	260	220	209	176	174	190	145	173	170	178	<b>2302</b>



2002 Admissions	Jan	Feb	Mar	Apr	May	Jun	Jul	Aug	Sep	Oct	Nov	Dec	Total
	193	160	181	185	213	145	177	173	179	206	183	164	<b>2159</b>



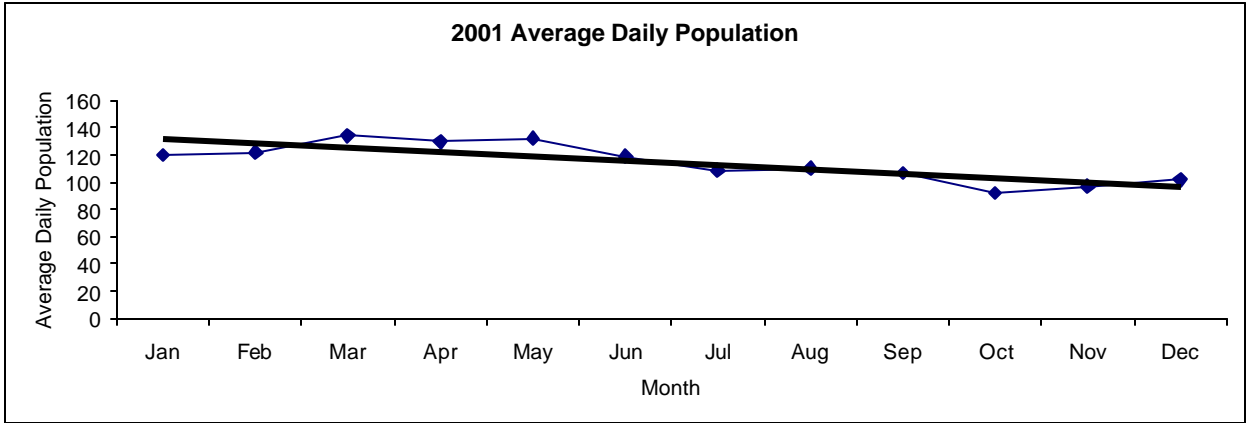
2003 Admissions	Jan	Feb	Mar	Apr	May	Jun	Jul	Aug	Sep	Oct	Nov	Dec	Total
	144	156	181	189	191	176	145	158	179	208	151	170	<b>2048</b>



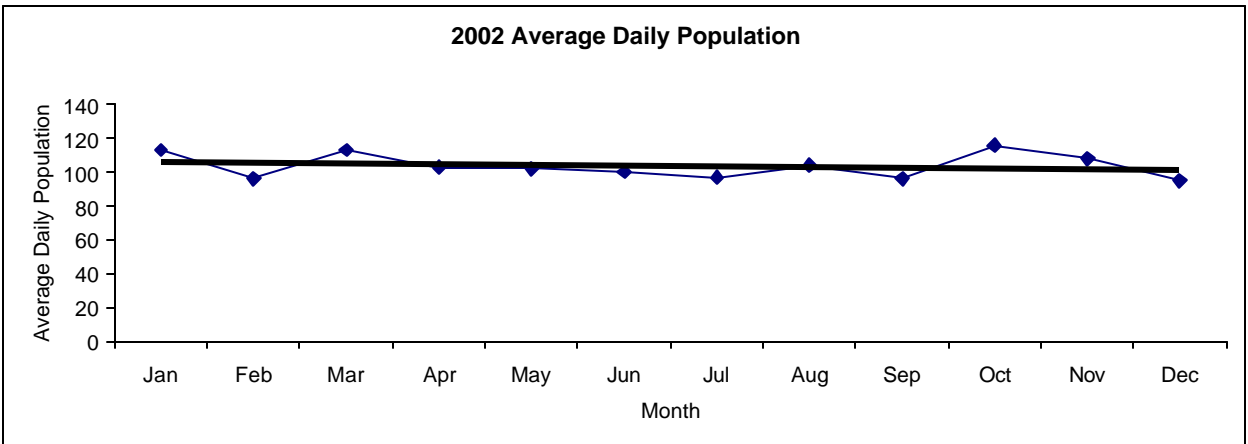


San Francisco Juvenile Probation  
**Juvenile Hall Average Daily Population By Month**  
 (Calendar Years 2001-2003)

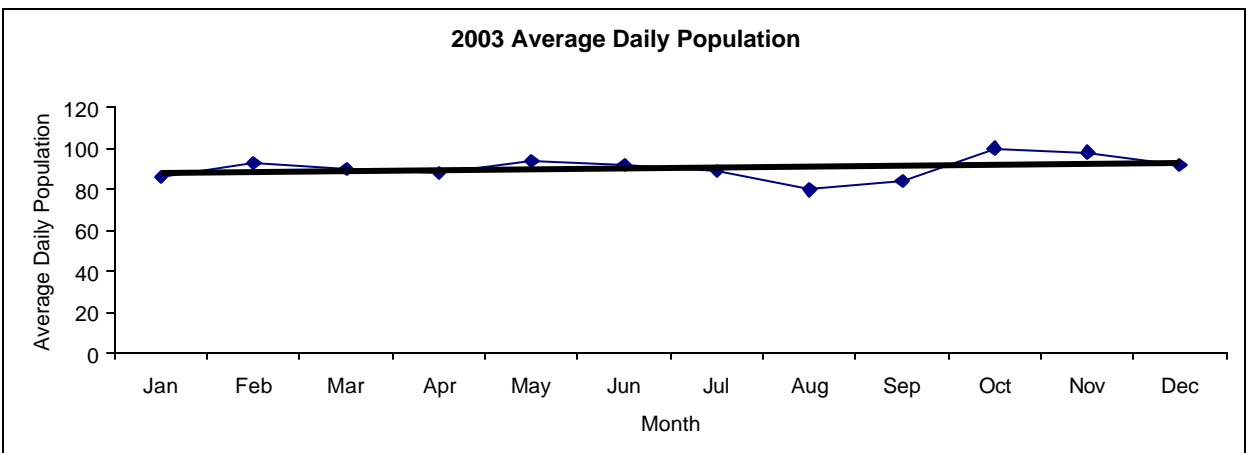
2001 Avg. Daily Pop.	Jan	Feb	Mar	Apr	May	Jun	Jul	Aug	Sep	Oct	Nov	Dec	Total
	120	122	134	130	132	119	109	110	107	92	97	102	<b>115</b>



2002 Avg. Daily Pop.	Jan	Feb	Mar	Apr	May	Jun	Jul	Aug	Sep	Oct	Nov	Dec	Total
	113	96	113	103	102	100	97	104	96	116	108	95	<b>104</b>

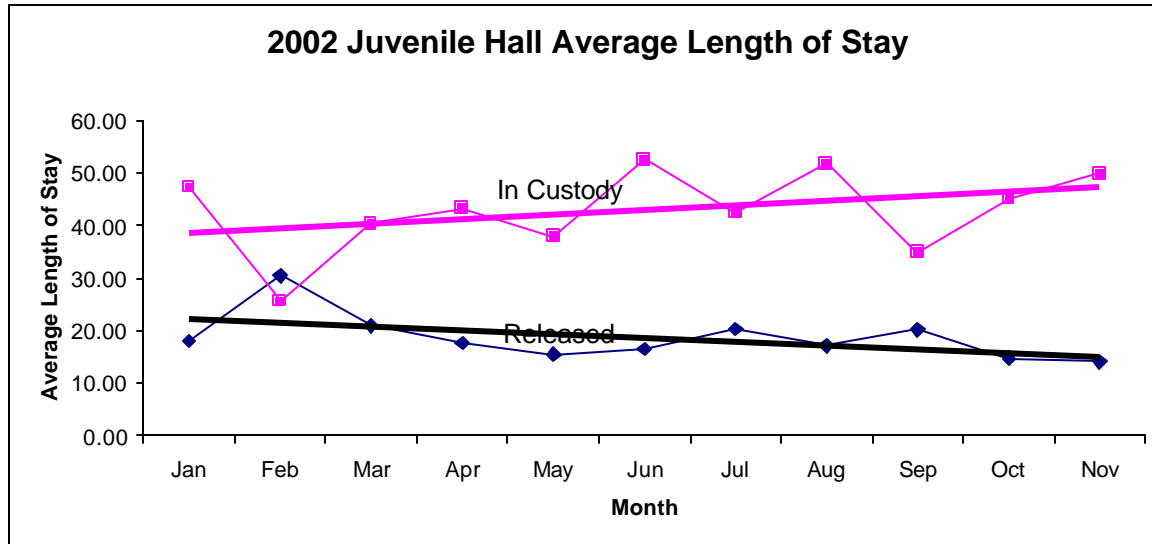


2003 Avg. Daily Pop.	Jan	Feb	Mar	Apr	May	Jun	Jul	Aug	Sep	Oct	Nov	Dec	Total
	86	93	90	88	94	92	89	80	84	100	98	92	<b>91</b>

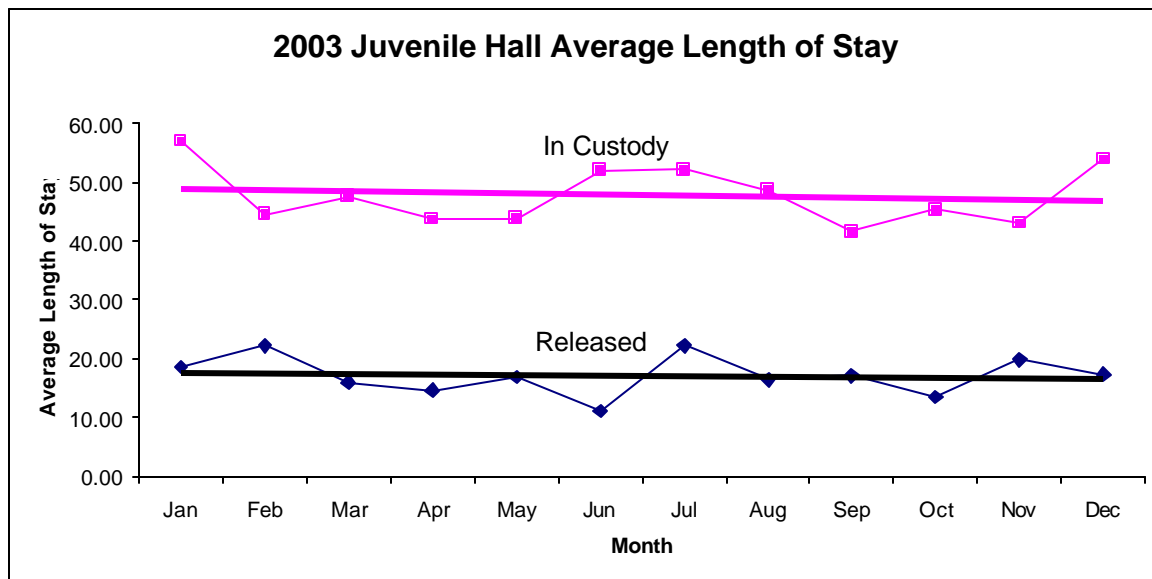


San Francisco Juvenile Probation  
**Juvenile Hall Average Length of Stay By Month**  
 (Calendar Years 2002-2003)

2002 Avg. Length of Stay	Jan	Feb	Mar	Apr	May	Jun	Jul	Aug	Sep	Oct	Nov	Dec	Total
<sup>1</sup> Released	18.05	30.44	20.88	17.65	15.50	16.45	20.22	17.15	20.16	14.67	14.03	18.30	<b>18.63</b>
<sup>2</sup> In Custody	47.30	25.63	40.35	43.29	37.86	52.57	42.41	51.77	34.82	45.11	49.85	58.85	<b>44.15</b>



2003 Avg. Length of Stay	Jan	Feb	Mar	Apr	May	Jun	Jul	Aug	Sep	Oct	Nov	Dec	Total
<sup>1</sup> Released	18.58	22.16	15.97	14.65	16.86	11.07	22.21	16.41	17.13	13.51	19.87	17.30	<b>17.14</b>
<sup>2</sup> In Custody	56.97	44.53	47.63	43.78	43.80	51.98	52.13	48.67	41.61	45.30	43.04	53.96	<b>47.78</b>



**Notes:** Less than one day of stay is calculated as one day.

<sup>1</sup> Length of stay is calculated according to release date for those who are released.

<sup>2</sup> For those still in custody, length of stay is calculated at the last day of the month.