

City and County of San Francisco



Juvenile Probation Department

---

## **Monthly Report for April 2004**

Presented to the Juvenile Probation Commission

May 26<sup>th</sup>, 2004

# Table of Contents

---

## Section I Summary Reports

Juvenile Hall, Log Cabin Ranch Summary Statistics.....	1
Community Programs Summary Statistics .....	2
Probation Services Summary Statistics.....	4

## Section II Current Month General Detail

Probation Referrals, Juvenile Admissions And Average Daily Population .....	6
Juvenile Hall Admissions and Average Daily Population.....	7
Commitments to out-of-home placement.....	8
Commitments to California Youth Authority.....	9
Log Cabin Ranch Admissions and Average Daily Population.....	10
Probation Referrals .....	11
Juvenile Hall And Log Cabin Ranch Incident Report .....	12
Juvenile Hall And Log Cabin Ranch Grievances Report.....	13
Bay Area Resident Juvenile Hall Comparison .....	14
Juvenile Hall Admissions.....	15
Juvenile Hall Detainees by Detention Reason.....	16
Juvenile Hall Average Daily Population by Rated Capacity.....	17
Juvenile Hall Average Length of Stay .....	18

## Section III Demographics

Juvenile Hall Detainees by Sex and Race/Ethnic Origin.....	19
Juvenile Hall Detainees by Age .....	20
Juvenile Hall Detainees by Age and Sex.....	21
Juvenile Hall Detainees by Geographic Residence of Youth.....	22
Juvenile Hall Detainees by Race/Ethnic Origin and Sex.....	23

## **Section IV**

### **Historical Information**

2001-2003 Probation Referrals .....	24
2002-2003 Juvenile Hall Admissions .....	25
2002-2003 Juvenile Hall Average Daily Population.....	26
2002-2003 Juvenile Hall Average Length of Stay by Month.....	27



# **Section I**

# **Summary Reports**

## Summary Report for the Month of April 2004

<b>Juvenile Hall</b>	<i>March 2003</i>	<i>March 2004</i>	<i>April 2003</i>	<i>April 2004</i>	<i>YTD 2003</i>	<i>YTD 2004</i>
Admissions	175	189	191	145	669	706
Average Daily Population	90.5	103.45	89.75	96.5	89.75	100.00
Average Length of Stay (Releases)	15.97	21.86	14.65	14.71	17.84	15.30
Average Length of Stay (In Custody)	47.63	49.20	43.78	59.05	48.23	54.58
Releases	188	192	188	150	663	689
<b>Log Cabin Ranch</b>						
Admissions:						
First Time Commitments	3	1	0	2	8	8
Recommitments	0	0	1	0	1	0
<i>Total</i>	<b>3</b>	<b>1</b>	<b>1</b>	<b>2</b>	<b>9</b>	<b>8</b>
Releases:						
Graduated	1	3	4	4	11	11
Escape	0	0	0	0	0	0
Other releases	0	1	0	0	6	1
<i>Total</i>	<b>1</b>	<b>4</b>	<b>4</b>	<b>4</b>	<b>17</b>	<b>12</b>
Average Daily Population	27	19	27	18	26	19
<b>Grievances Filed</b>						
Juvenile Hall:						
B1	0	0	2	2	3	3
B2	0	0	0	0	0	8
B3	0	0	4	0	0	1
B4	1	0	3	0	10	1
B5	0	0	0	0	5	2
G2 (CO-ED)	1	0	0	0	2	2
<i>Total</i>	<b>2</b>	<b>0</b>	<b>9</b>	<b>2</b>	<b>20</b>	<b>17</b>
Log Cabin Ranch	<b>0</b>	<b>0</b>	<b>0</b>	<b>0</b>	<b>0</b>	<b>0</b>
<b>Incident Reports</b>						
Juvenile Hall	14	10	8	20	50	53
Log Cabin Ranch	1	0	2	1	3	1
<i>Total</i>	<b>15</b>	<b>10</b>	<b>10</b>	<b>21</b>	<b>53</b>	<b>54</b>

## Summary Report for the Month of April 2004

<b>Community Programs</b>	<i>Program Vacancies by Agency on April 2004</i>	<i>Active in program March 2003</i>	<i>Active in Program March 2004</i>	<i>Active in Program April 2003</i>	<i>Active in Program April 2004</i>
<b>IHBS Monthly Client Count</b>					
BayView Hunters Point Foundation	13	18	13	16	13
Chinatown Youth Center	0	10	13	10	13
Morrisania West, Inc.	0	11	12	11	12
Office of Samoan Affairs	2	6	9	9	9
Potrero Hill Neighborhood House	4	11	7	11	7
Instituto Familiar de La Raza	10	24	22	22	22
Vietnamese Youth Development Center	4	7	7	5	7
Brothers Against Guns	3	0	11	0	11
<i>Total</i>	<b>36</b>	<b>87</b>	<b>94</b>	<b>84</b>	<b>94</b>
<i>April 2004 Percent Program Utilization</i>	<b>73%</b>				
<i>April 2004 Percent Change from last report</i>	<b>0%</b>				

Summary Report for TANF and Girls Programs  
Month: March 2004

PROGRAM	ANNUAL GOAL	NUMBER SERVED
California Community Dispute Services: Youth Accountability Boards	40	45
CARECEN: Tattoo Removal and Case Management	45	33
Center for Young Women's Development: Girls Services	40	170
Community Works – Girls Diversion Program	24	14
Community Works – Girls Therapeutic Arts Curriculum in Juvenile Hall	150	74
Community Works – ROOTS Support for Children of Incarcerated Parents	40	44
Edgewood Kinship Support Network	30 families	14
Family Restoration House: Life Skills	30	32
Girls 2000: Girls Services and Family Support Services	20	22
Instituto Familiar de la Raza – Case Management	10	8
Mission Neighborhood Center: Young Queens on the Rise – Girls Services	35	27
Performing Arts Workshop: Arts Education at Impact High School	30	34
SAGE: Girls Services	35	38
Samoan Community Development Center: Anger Management	75	78
Special Services for Groups – Occupational Therapy Training Program	50	72
United Way/Girls Justice Initiative: Detention-based Case Management & Inside Mentoring Program	300 72	161 79
Urban Services YMCA: Bayview Beacon Truancy Support	50	16
YGCIC Focus Vocational Programs and GED Plus	105	43
YWCA – CITS & FITS Girls Mentorship	64	65

## Summary Report for the Month of April 2004

<b>Probation Services</b>	<i>March 2004</i>	<i>April 2004</i>	<i>Year To Date 2004</i>
Probation Referrals	270	197	962
Petitions	101	74	370
Selected Court Dispositions:			
California Youth Authority	1	0	3
Log Cabin Ranch	0	2	5
Out of Home Placement	21	17	66
Other Probation	31	39	118
Violation of Probation Petitions Filed	20	16	53
California Youth Authority Monthly Count			
Institutions:			
Males	46	44	
Females	5	5	
<b>Total</b>	<b>51</b>	<b>49</b>	
Parole:			
Males	22	23	
Females	1	1	
<b>Total</b>	<b>23</b>	<b>24</b>	



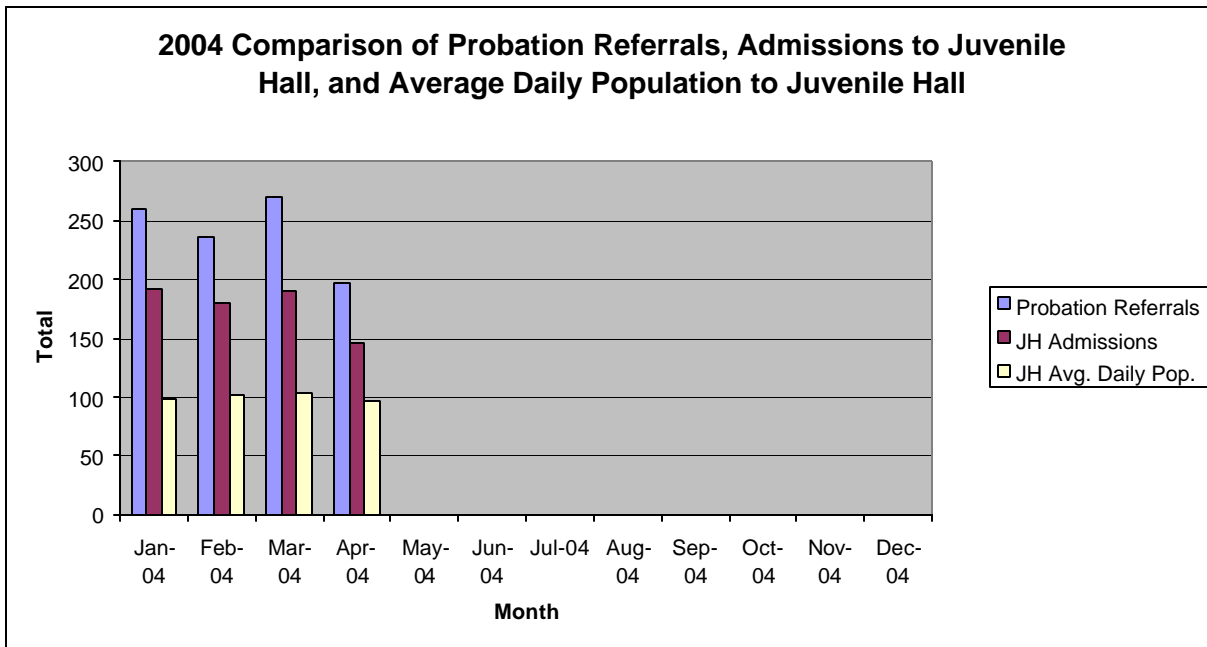
## Summary Report for the Month of April 2004

<b>Probation Services</b>			
<b>Caseload List</b>	March 2004	April 2004	April Average # Youth by PO
South Intake	242	220	44
North Intake	165	160	26
Prevention Diversion	179	182	20
Serious Offenders	106	108	18
Supervision	156	169	21
County Placement	21	18	18
Private Placement	187	189	17
Drug Court	25	23	23
Family Integrated Treatment Services	123	127	15
<i>Total</i>	<b>1204</b>	<b>1196</b>	<b>22</b>
<b>Special Services Unit</b>	New	Closed	Active at end of Month
Record Sealings	6	15	141
Stepparent Adoptions	5	3	52
Terminations	1	0	11
Marriage Consents	0	1	0
Custody Evaluations	0	0	0
	Entered	Completed	Active at end of Month
Community Service	13	4	1172
Street Law (next session May 2004)	0	0	0
		Referred	Completed at end of Month
COPS		9	7
Theft Awareness		44	32
Anger Management		17	11
Life Management Skills		4	4
Kids Turn Non-Violent Family Skills		8	6
Information, Record Checks, Research & Photo Copying Juvenile Records For:	February 2004	March 2004	Year to Date 2004
Job Corps, Probation Departments,			
Military, Law Enforcement,			
Misc., (letters, Memos, Forms, etc.)	149	154	543

**Section II**  
**Current Month**  
**General Detail**

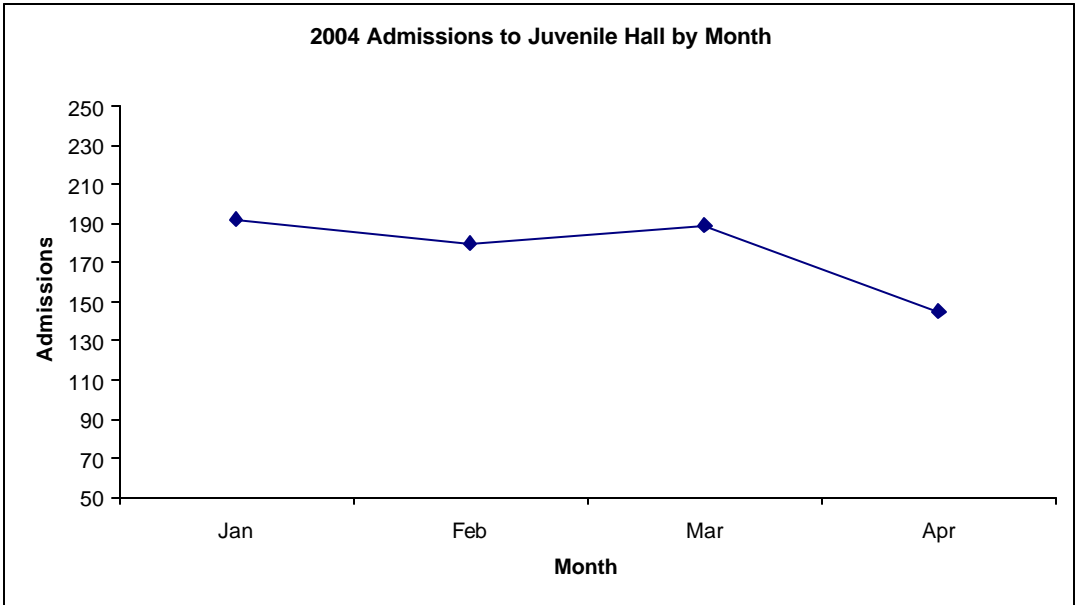
## San Francisco Juvenile Probation

	Jan-04	Feb-04	Mar-04	Apr-04	May-04	Jun-04	Jul-04	Aug-04	Sep-04	Oct-04	Nov-04	Dec-04
Probation Referrals	259	236	270	197								
JH Admissions	192	180	189	145								
JH Avg. Daily Pop.	98	101	103	96.5								

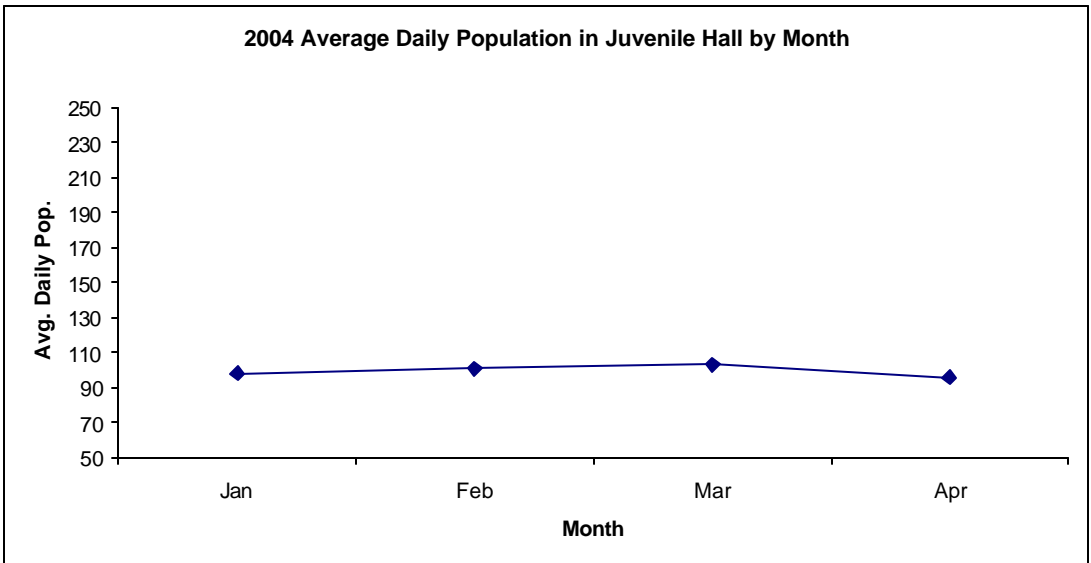


# San Francisco Juvenile Probation Admissions and Average Daily Population In Juvenile Hall (Calendar Year 2004)

Admissions	Jan	Feb	Mar	Apr	May	Jun	Jul	Aug	Sep	Oct	Nov	Dec	Total
2004	192	180	189	145									706



Avg. Daily Pop.	Jan	Feb	Mar	Apr	May	Jun	Jul	Aug	Sep	Oct	Nov	Dec	Total
2004	98	101	103	96									100

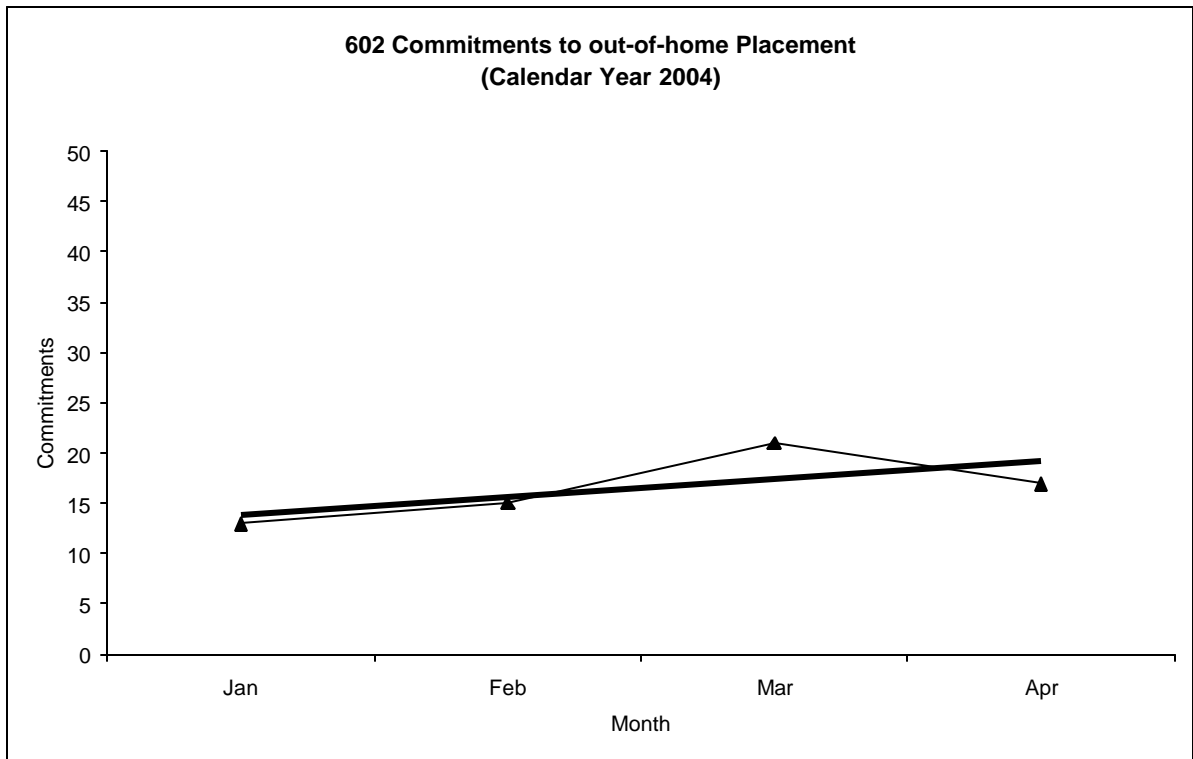


# Out-of-Home Placement<sup>1</sup>

## Commitments of 602's

### Calendar Year 2004

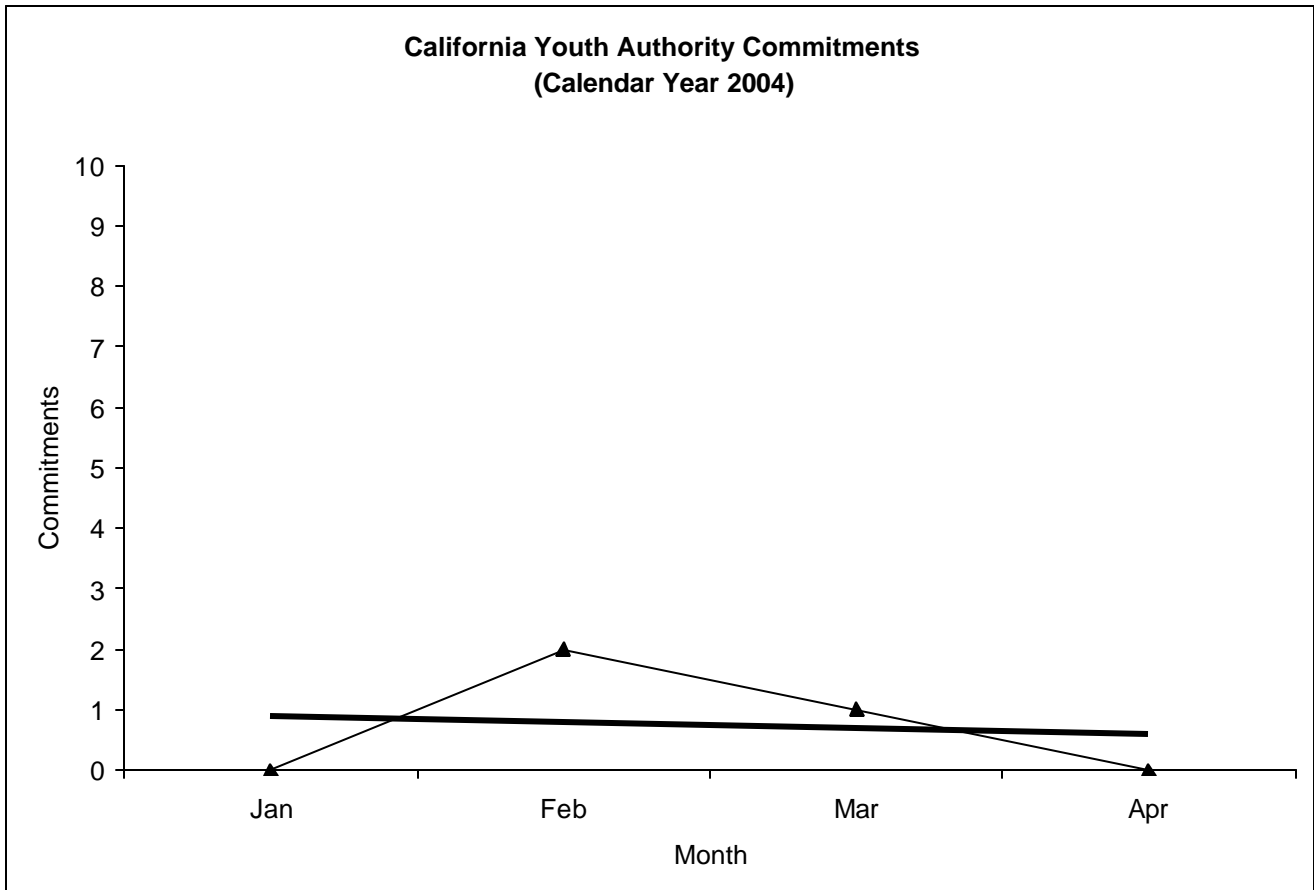
Commitments	Jan	Feb	Mar	Apr	May	Jun	Jul	Aug	Sep	Oct	Nov	Dec	Total
2004	13	15	21	17									66



<sup>1</sup> This report is based on 602 Commitments to out-of-home placements. If there is a 601 commitment, it will show as a footnote here. Figures are regularly updated to include reports from previous reporting periods.

California Youth Authority  
Commitments  
(Calendar Year 2004)

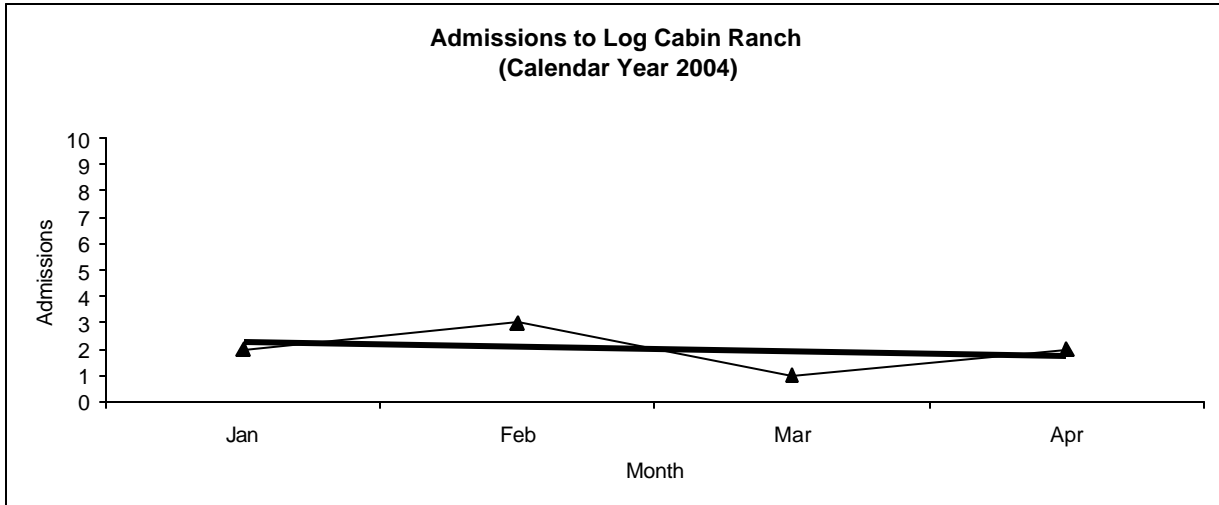
Commitments	Jan	Feb	Mar	Apr	May	Jun	Jul	Aug	Sep	Oct	Nov	Dec	Total
2004	0	2	1	0									3



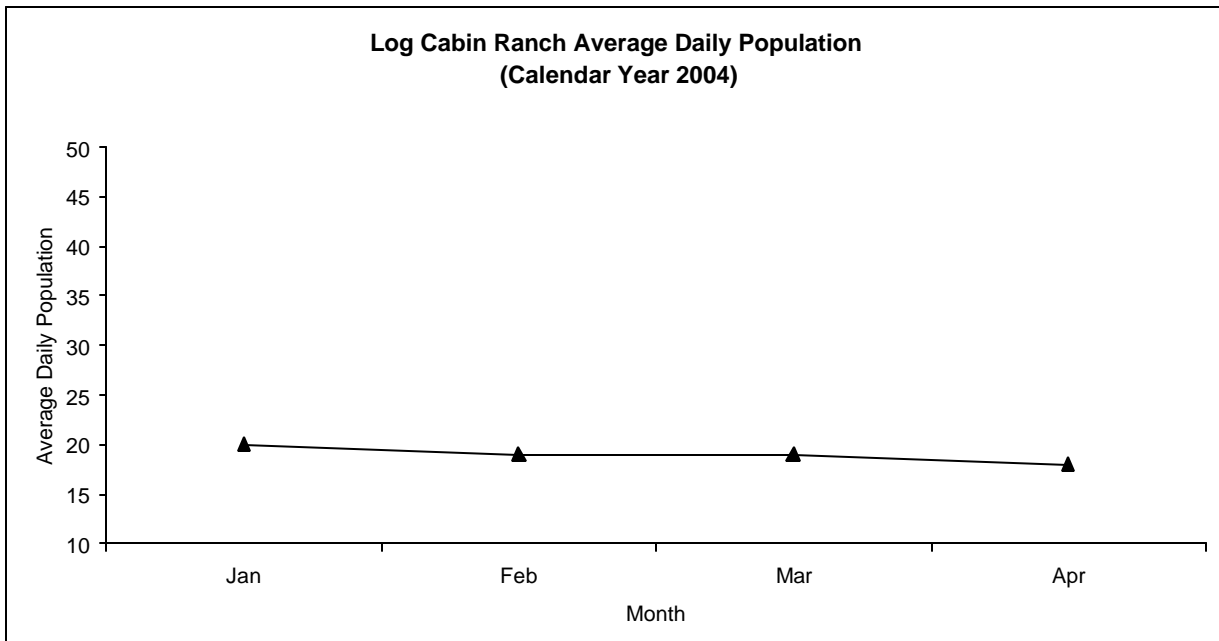
# Log Cabin Ranch

## Admissions and Average Daily Population (Calendar Year 2004)

<b>Admissions</b>	Jan	Feb	Mar	Apr	May	Jun	Jul	Aug	Sep	Oct	Nov	Dec	<b>Total</b>
2004	2	3	1	2									<b>8</b>



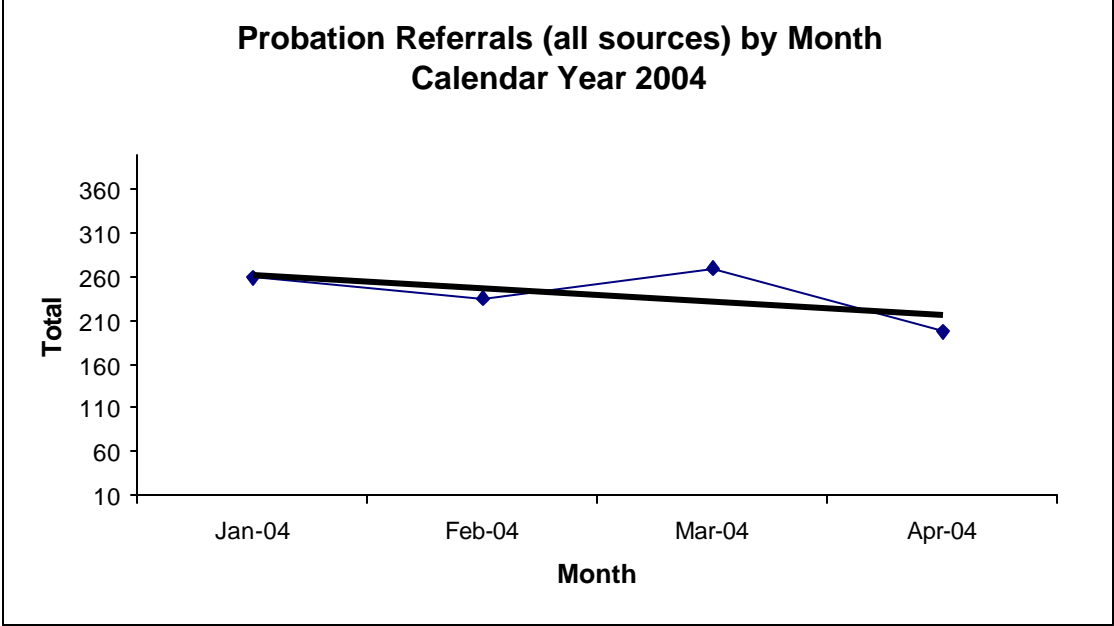
<b>Avg. Daily Pop.</b>	Jan	Feb	Mar	Apr	May	Jun	Jul	Aug	Sep	Oct	Nov	Dec	<b>Total</b>
2004	20	19	19	18									<b>19.00</b>



# Probation Referrals by Month Calendar Year 2004

## Probation Referrals (all sources) by Month (602 W&I)

Jan-04	259
Feb-04	236
Mar-04	270
Apr-04	197
May-04	
Jun-04	
Jul-04	
Aug-04	
Sep-04	
Oct-04	
Nov-04	
Dec-04	





SAN FRANCISCO JUVENILE PROBATION DEPARTMENT  
MONTHLY INCIDENT REPORT FORM  
MONTH/YEAR: APRIL 2004

<b>Log Cabin Ranch</b>	Battery on Staff	Injury to Staff due to Restraint of Minor	Fight	Battery Youth on Youth	Attempted Escape	AWOL	Attempted Suicide	Serious Contraband (Weapon Illegal Drug)
	<b>0</b>	<b>0</b>	<b>1</b>	<b>0</b>	<b>0</b>	<b>0</b>	<b>0</b>	<b>0</b>
	Battery on Staff with Injury	Fire	Fight with Injury	Battery Youth on Youth with Injury	Escape	Death	Suicide	Major Property Destruction
	<b>0</b>	<b>0</b>	<b>0</b>	<b>0</b>	<b>0</b>	<b>0</b>	<b>0</b>	<b>0</b>
<b>Juvenile Hall</b>	Battery on Staff	Injury to Staff due to Restraint of Minor	Fight	Battery Youth on Youth	Attempted Escape	AWOL	Attempted Suicide	Serious Contraband (Weapon Illegal Drug)
	<b>1</b>	<b>2</b>	<b>6</b>	<b>4</b>	<b>0</b>	<b>0</b>	<b>3</b>	<b>0</b>
	Battery on Staff with Injury	Fire	Fight with Injury	Battery Youth on Youth with Injury	Escape	Death	Suicide	Major Property Destruction
	<b>2</b>	<b>0</b>	<b>1</b>	<b>0</b>	<b>0</b>	<b>0</b>	<b>0</b>	<b>1</b>

## Grievances Filed February 2004

### San Francisco Juvenile Probation Department

#### Juvenile Hall

During the month of April, there was two (2) grievance submitted under **Juvenile Title 15 & 24 Minimum Standards for Juvenile Facilities Guidelines 2001 Revisions**. All documents have been logged as grievances. In addition, all the grievances have been referred to the appropriate departments and staff. The grievances would have been resolved via exchange of ideas between supervisory staff, residents, and the office of the Ombudsman.

**Grievance Documents:**

**Grievance 16 filed in B2 indicating** the nurse changed his medical dressing in the unit instead of in the clinic. The medical dressing could be changed in the unit, by the nurse. There was no violation of any rights during this process.

**Grievance 17 filed in B2 alleging** that he was denied access to the restroom while there was adequate staff on the unit. Youths' resolution is more of an administration issue.



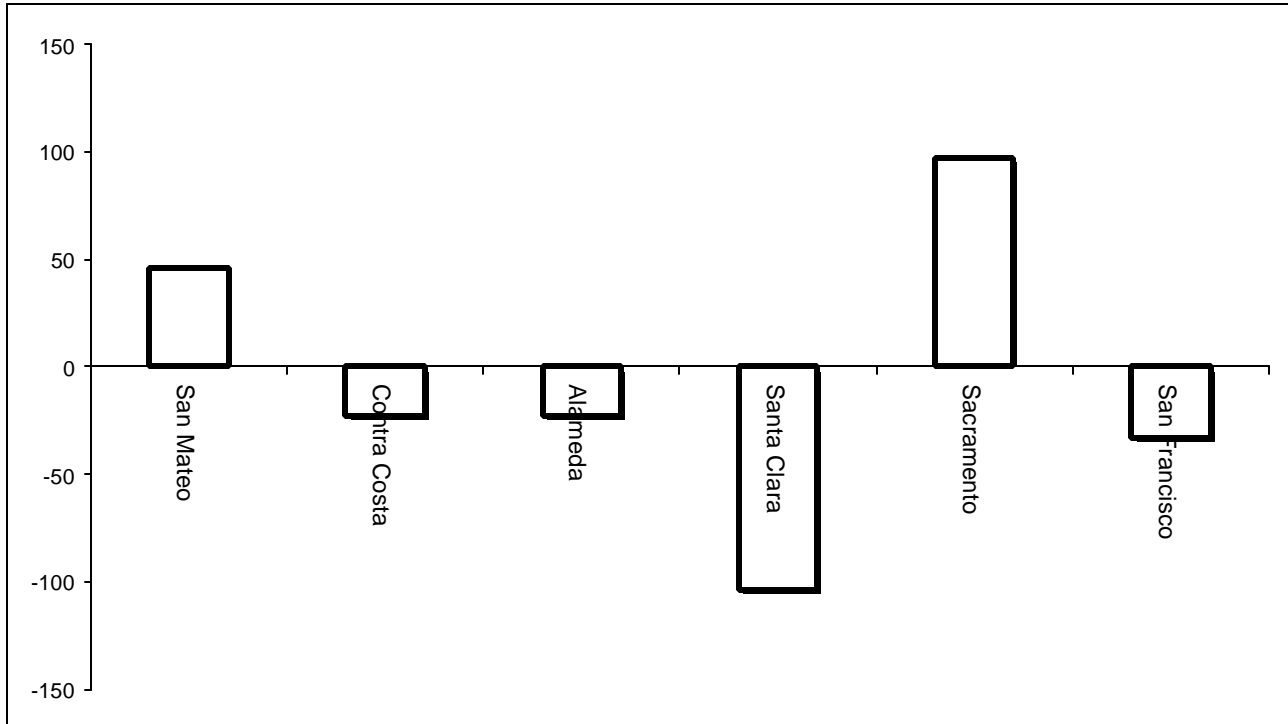
**Grievances Filed April 2004  
San Francisco Probation Department  
From the office of the Ombudsman.**

<i>Area of Infraction</i>	<i>Title 15 Article/Section</i>	<i>B1</i>	<i>Girls Unit</i>	<i>B2</i>	<i>B3</i>	<i>B4</i>	<i>B5</i>	<i>TOTAL</i>
<b>Health Services</b>	<b>8.1433</b>	0	0	1	0	0	0	1
<b>Discipline Process</b>	<b>7.1391</b>	0	0	1	0	0	0	1
<b>Total</b>		<b>0</b>	<b>0</b>	<b>2</b>	<b>0</b>	<b>0</b>	<b>0</b>	<b>2</b>

#### Log Cabin Ranch

<b>Type</b>	<b>Log Cabin Ranch</b>
Food/Snacks	0
Laundry	0
Personal Property	0
Phone Calls	0
Procedures	0
Head Call	0
Discipline	0
Complaints vs. Staff	0
Cottage Change	0
Medical	0
School	0
Probation	0
Miscellaneous	0
<b>Total</b>	<b>0</b>

## Bay Area Resident Juvenile Hall Comparison Over/Under Capacity on May 5th, 2004

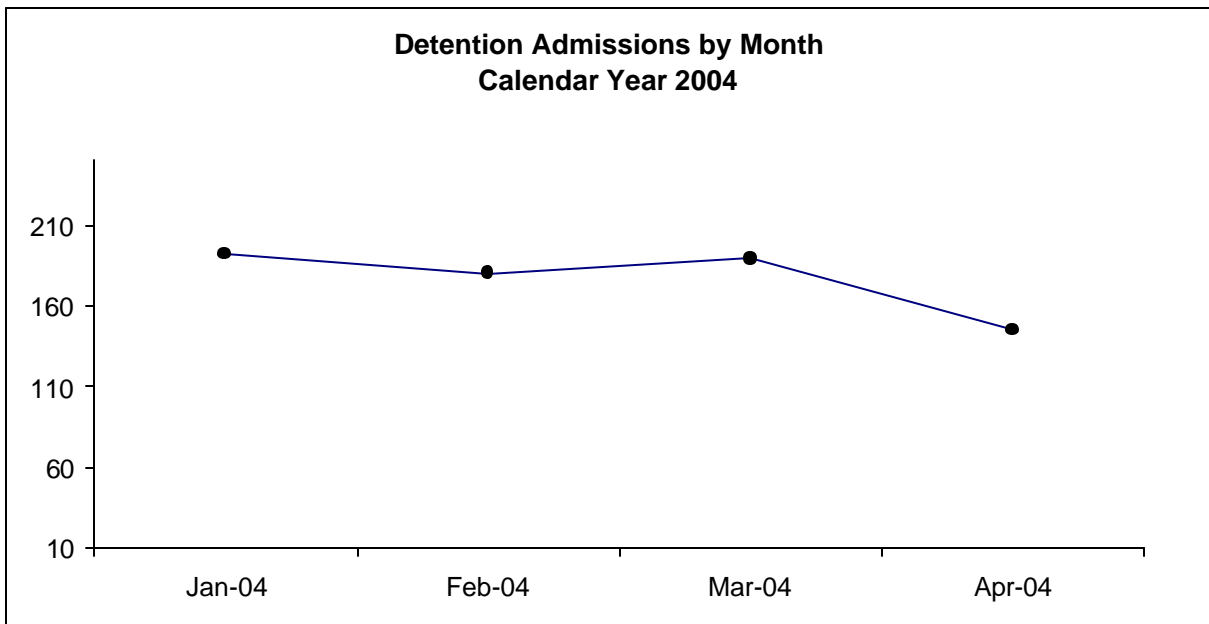


	Rated Capacity	Actual	Over/Under Capacity
San Mateo	130	176	46
Contra Costa	160	137	-23
Alameda	288	265	-23
Santa Clara	329	225	-104
Sacramento	256	353	97
San Francisco	132	99	-33

# Juvenile Hall Admissions by Month Calendar Year 2004

## Detention Admissions by Month

Jan-04	192
Feb-04	180
Mar-04	189
Apr-04	145
May-04	
Jun-04	
Jul-04	
Aug-04	
Sep-04	
Oct-04	
Nov-04	
Dec-04	

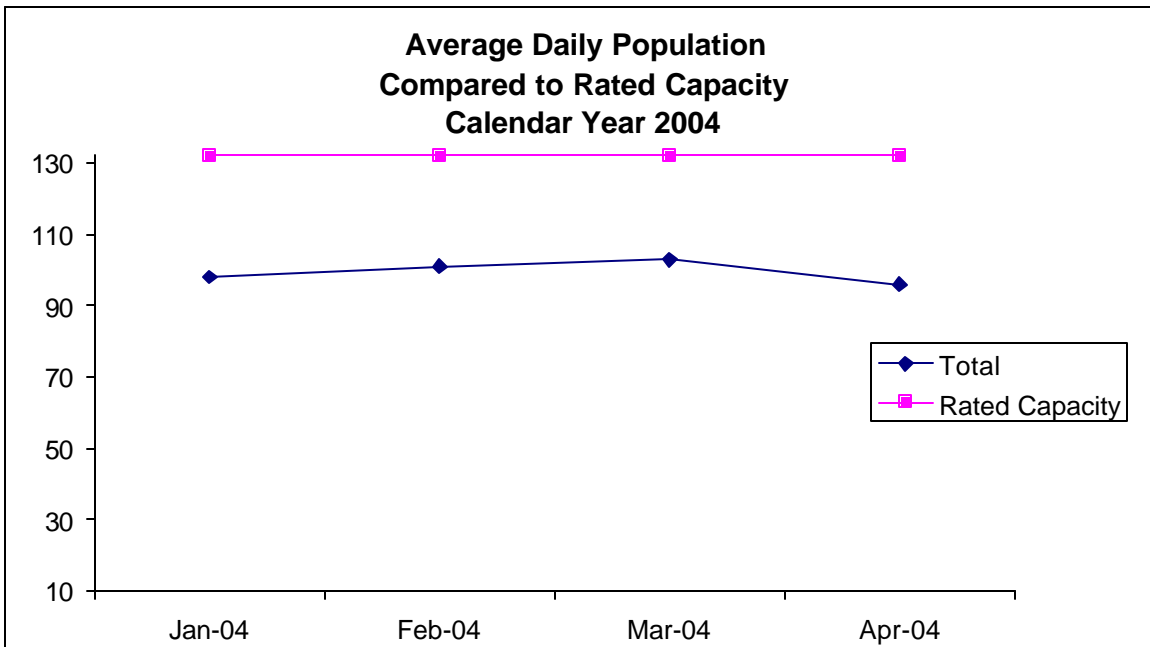


**Characteristics of Juvenile Hall Detainees on April 30<sup>th</sup>, 2004  
Using CJIS Code From the Department of Justice**

Detention Reason	Offense Code	Attempted	MFX	Count	%
MURDER	187 (A) PC		F	4	4.00%
ATTEMPTED MURDER:SECOND DEGREE ON PEACE OFFICER	664 /187 (A) PC	Y	F	6	6.00%
ORAL COPULATION IN CONCERT W/FORCE/ETC	288 A (D)(1) PC		F	4	4.00%
MANUFACTURES/DISTRIBUTE/TRANSFER/ETC ANY ASSAULT WEAPON	12280 (A)(1) PC		F	1	1.00%
LEWD OR LASCIVIOUS ACTS W/CHILD UNDER 14 YEARS	288 (A) PC		F	2	2.00%
SEXUAL PENETRATION WITH FORCE/ETC	289 (A)(1) PC		F	1	1.00%
CARJACKING	215 PC		F	3	3.00%
ROBBERY	211 PC	Y	F	1	1.00%
ASSAULT W/DEADLY WEAPON ON TRANSPORTATION PERSONNEL/ETC	245.2 PC		F	1	1.00%
TRANSPORT/SELL NARCOTIC/CONTROLLED SUBSTANCE	11352 (A) HS		F	1	1.00%
POSSESS/PURCHASE COCAINE BASE FOR SALE	11351.5 HS		F	1	1.00%
BURGLARY	459 PC		F	4	4.00%
ROBBERY:SECOND DEGREE	212.5(C) PC		F	9	9.00%
POSSESS/PURCHASE FOR SALE NARCOTIC/CONTROLLED SUBSTANCE	11351 HS		F	1	1.00%
SELL/FURNISH/ETC MARIJUANA/HASHISH	11360 (A) HS		F	1	1.00%
ASSAULT:DEADLY WEAPON OR FORCE:POSSIBLE GREAT BODILY INJ	245 (A) PC		F	4	4.00%
FORCE OR ADW NOT FIREARM:GBI LIKELY	245 (A)(1) PC		F	2	2.00%
POSSESS NARCOTIC CONTROLLED SUBSTANCE	11350 (A) HS		F	2	2.00%
FALSE IMPRISONMENT WITH VIOLENCE/FRAUD/DECEIT/ETC	237 (A) PC		F	1	1.00%
GRAND THEFT FROM PERSON	487 (C) PC		F	1	1.00%
TAKE VEHICLE W/O OWNER'S CONSENT/VEHICLE THEFT	10851 (A) VC		F	1	1.00%
RECEIVE/ETC KNOWN STOLEN PROPERTY	496 (A) PC		F	1	1.00%
POSSESS CONTROLLED SUBSTANCE	11377 (A) HS		F	1	1.00%
CONSPIRACY:COMMIT CRIME	182 (A)(1) PC		F	2	2.00%
VANDALISM (\$400 OR MORE)	594 (B)(1) PC		F	1	1.00%
VISIT WHERE CONTROLLED SUBSTANCE USED	11365 (A) HS		M	1	1.00%
BATTERY:SPOUSE/EX SPOUSE/DATE/ETC	242 PC		M	1	1.00%
THREATEN CRIME WITH INTENT TO TERRORIZE	422 PC		M	1	1.00%
BURGLARY:SECOND DEGREE	460 (B) PC		M	1	1.00%
BATTERY ON PERSON	243 (A) PC		M	1	1.00%
PETTY THEFT RETAIL MERCHANDISE	490.5 PC		M	1	1.00%
DISORDERLY CONDUCT:PROSTITUTION	647 (B) PC		M	1	1.00%
FALSE IDENTIFICATION TO SPECIFIC PEACE OFFICERS	148.9(A) PC		M	1	1.00%
FAIL TO OBEY ORDER OF JUVENILE COURT 602 WI	777 (A)(2) WI		M	7	7.00%
BENCH WARRANT	BENCH WARRANT		X	1	1.00%
CHANGE OF PLACEMENT/PLACEMENT FAILURE	737 WI		M	5	5.00%
COURT ORDER 602	CTORD 602 XX		X	5	5.00%
CYA HOLD	CYA HOLD XX		X	1	1.00%
VIOLATION(S) OF HOME SUPERVISION CONDITION	628.1 WI		M	5	5.00%
WARRANT 602	WRNT602 XX		X	12	12.00%
			<b>Total</b>	<b>100</b>	<b>100.00%</b>

**Average Daily Population  
By Rated Capacity  
Calendar Year 2004**

	<b>Total</b>	<b>Rated Capacity</b>
<b>Jan-04</b>	98	132
<b>Feb-04</b>	101	132
<b>Mar-04</b>	103	132
<b>Apr-04</b>	96	132
<b>May-04</b>		132
<b>Jun-04</b>		132
<b>Jul-04</b>		132
<b>Aug-04</b>		132
<b>Sep-04</b>		132
<b>Oct-04</b>		132
<b>Nov-04</b>		132
<b>Dec-04</b>		132



## Juvenile Hall Average Length of Stay

For the Month of April 2004

### <sup>1</sup>Released

<b>Range of Days</b>	<i>1-10 days</i>	<i>11-20 days</i>	<i>21-30 days</i>	<i>30 or more days</i>	<b>Total</b>
# of Youth Released	95	24	12	19	150
% of Population	71.30%	8.70%	3.80%	16.30%	100%
# of Days	309	354	309	1235	2207
% of Total Days	14.00%	16.04%	14.00%	55.96%	100%
Average Length of Stay	3.25	14.75	25.75	65.00	14.71

### <sup>2</sup>In Custody

<b>Range of Days</b>	<i>1-10 days</i>	<i>11-20 days</i>	<i>21-30 days</i>	<i>30 or more days</i>	<b>Total</b>
# of Youth Detained	28	13	10	49	100
% of Population	38.60%	18.10%	12.60%	30.70%	100%
# of Days	127	195	249	5334	5905
% of Total Days	2.15%	3.30%	4.22%	90.33%	100%
Average Length of Stay	4.54	15.00	24.90	108.86	59.05

Notes: Less than one day of stay is calculated as one day.

<sup>1</sup>Length of stay is calculated according to release date for those who are released.

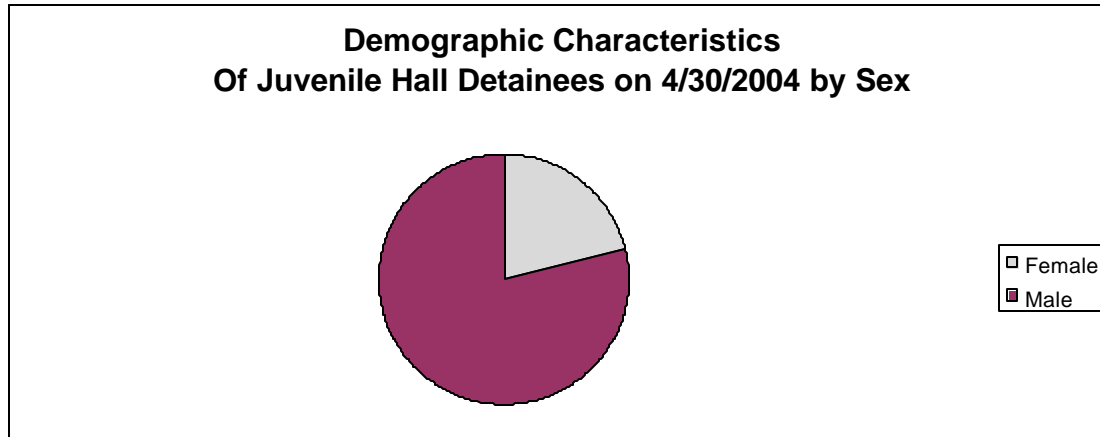
<sup>2</sup>For those still in custody, length of stay is calculated at the last day of the month.

# **Section III**

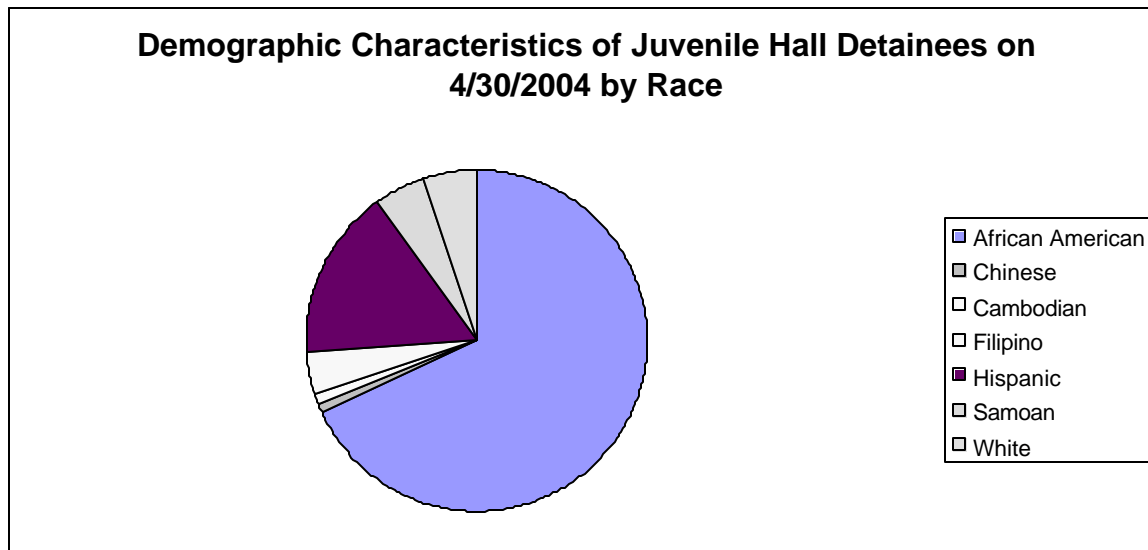
## **Demographics**



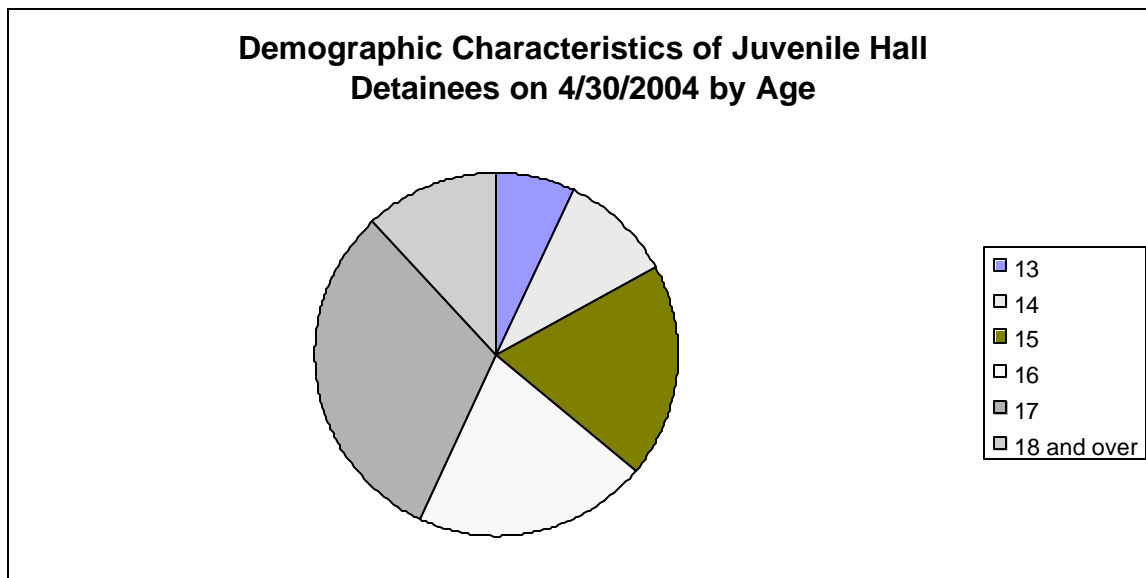
Sex	Frequency	Percent
Female	21	21.00%
Male	79	79.00%
<b>Total</b>	<b>100</b>	<b>100.00%</b>



Race/Ethnic Origin	Frequency	Percent
African American	68	68.00%
Chinese	1	1.00%
Cambodian	1	1.00%
Filipino	4	4.00%
Hispanic	16	16.00%
Samoan	5	5.00%
White	5	5.00%
<b>Total</b>	<b>100</b>	<b>100.00%</b>

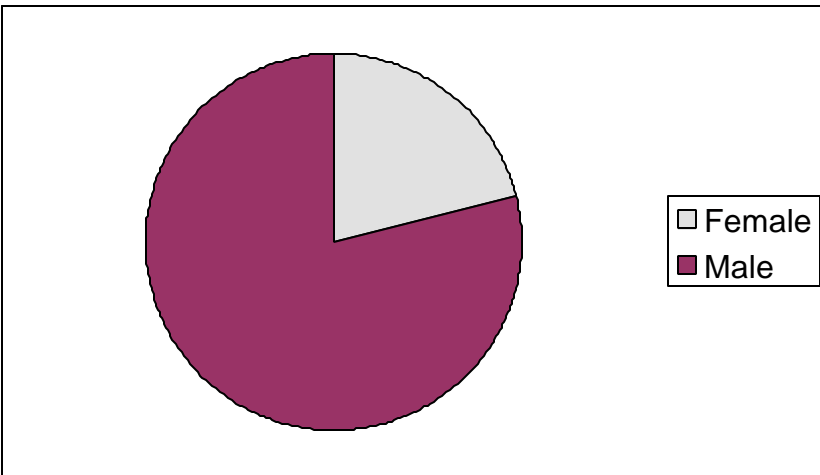


Age	Frequency	Percent
13	7	7.00%
14	10	10.00%
15	19	19.00%
16	21	21.00%
17	31	31.00%
18 and over	12	12.00%
<b>Total</b>	<b>100</b>	<b>100.00%</b>



Demographic Characteristics of Juvenile Hall Detainees  
on 4/30/2004  
Age by Sex

Age	Female	Male	Total	
13	0	7	7	7.00%
14	2	8	10	10.00%
15	2	17	19	19.00%
16	7	14	21	21.00%
17	7	24	31	31.00%
18 and over	3	9	12	12.00%
<b>Total</b>	<b>21</b>	<b>79</b>	<b>100</b>	<b>100.00%</b>
	<b>21.00%</b>	<b>79.00%</b>	<b>100.00%</b>	



Demographic Characteristics  
Of Juvenile Hall Detainees on April 30<sup>th</sup>, 2004

---

<b>Geographic Residence of Youth</b>	Frequency	Percent
Richmond	2	2.0
Treasure Island/Yerba Buena	1	1.0
Western Addition	10	10.0
South of Market/Tenderloin	2	2.0
Haight Ashbury/Castro	3	3.0
Inner Mission	10	10.0
Potrero	2	2.0
Parkside	2	2.0
Ingleside (West of Twin Peaks)	10	10.0
Outer Mission	17	17.0
Bayview	26	26.0
Non-San Francisco and Unavailable	15	15.0
	-----	-----
Total	100	100.0

<b>Non-San Francisco and Unavailable</b>	Frequency	Percent
DALY CITY	2	13.3
FRESNO	2	13.3
LAKEPORT	1	6.7
NAPA	1	6.7
OAKLAND	3	20.0
SAN JOSE	2	13.3
SOUTH SAN FRANCISCO	1	6.7
UNAVAILABLE	3	20.0
	-----	-----
Total	15	100.0

Demographic Characteristics  
Of Juvenile Hall Detainees on April 30<sup>th</sup>, 2004

---

**Race/Ethnic Origin by Gender**

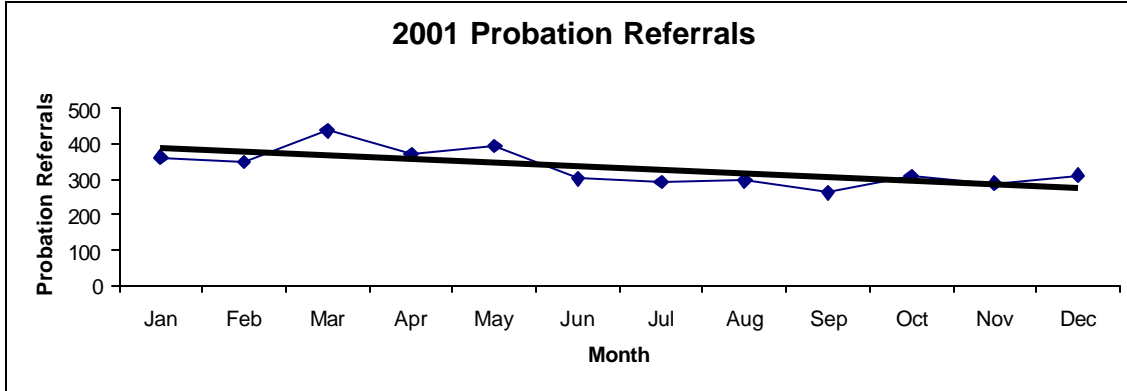
RACE	Count	SEX		Row Total
		Female	Male	
		F	M	
AFRICAN AMERICAN	13	55	68 68.0	
CHINESE		1	1 1.0	
CAMBODIAN	1		1 1.0	
FILIPINO	1	3	4 4.0	
HISPANIC	5	11	16 16.0	
SAMOAN	1	4	5 5.0	
WHITE		5	5 5.0	
Column Total	21 21.0	79 79.0	100 100.0	

# **Section IV**

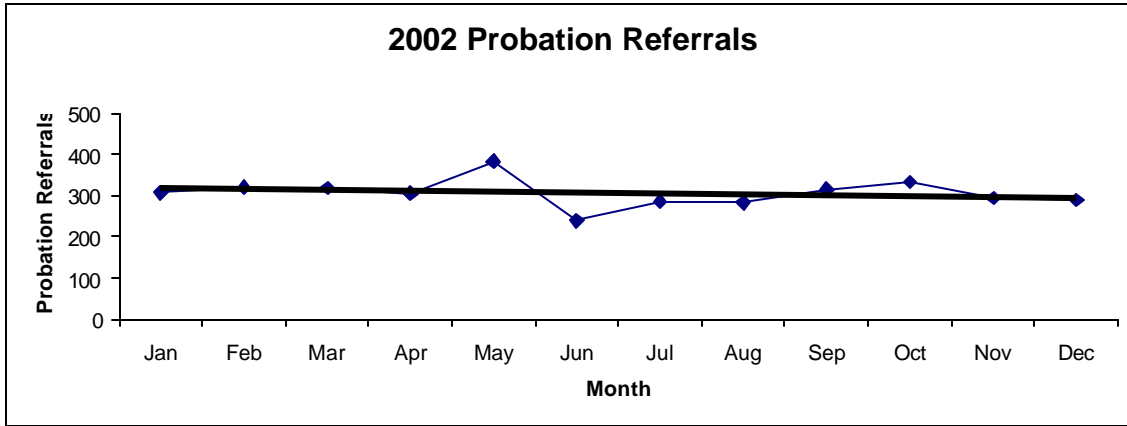
## **Historical Information**

San Francisco Juvenile Probation  
**Probation Referrals (all sources) By Month**  
 (2001-2003)

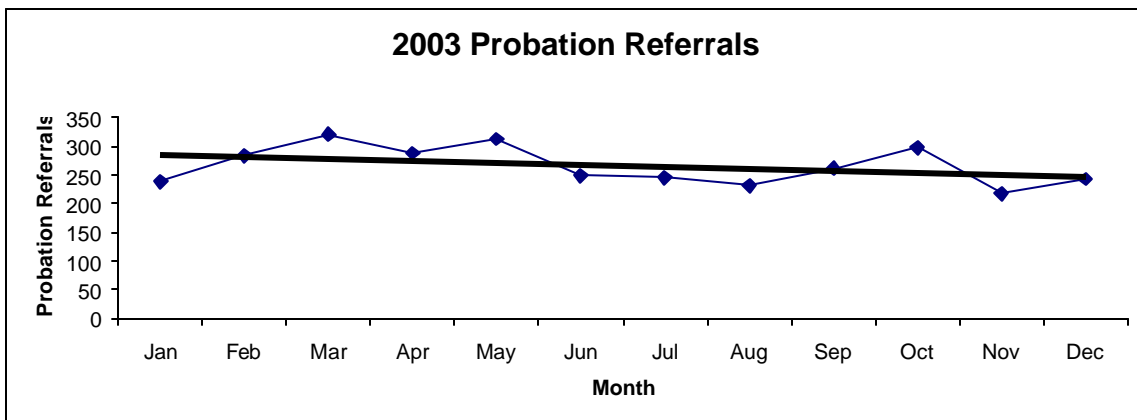
2001 Probation Referrals	Jan	Feb	Mar	Apr	May	Jun	Jul	Aug	Sep	Oct	Nov	Dec	Total
	361	348	437	370	394	301	292	296	262	309	287	311	<b>3968</b>



2002 Probation Referrals	Jan	Feb	Mar	Apr	May	Jun	Jul	Aug	Sep	Oct	Nov	Dec	Total
	308	320	318	305	384	240	286	283	315	333	294	289	<b>3675</b>

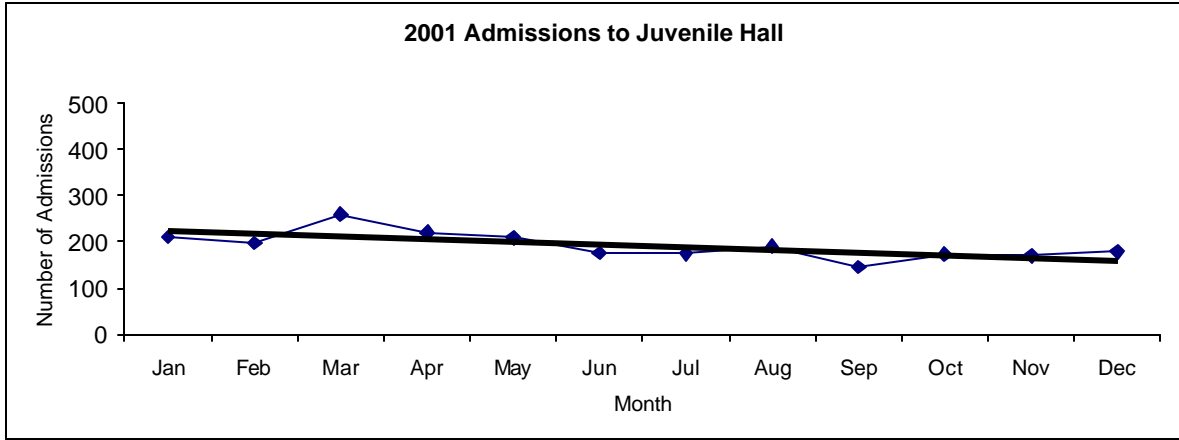


2003 Probation Referrals	Jan	Feb	Mar	Apr	May	Jun	Jul	Aug	Sep	Oct	Nov	Dec	Total
	238	283	320	288	313	248	245	231	261	297	218	243	<b>3185</b>

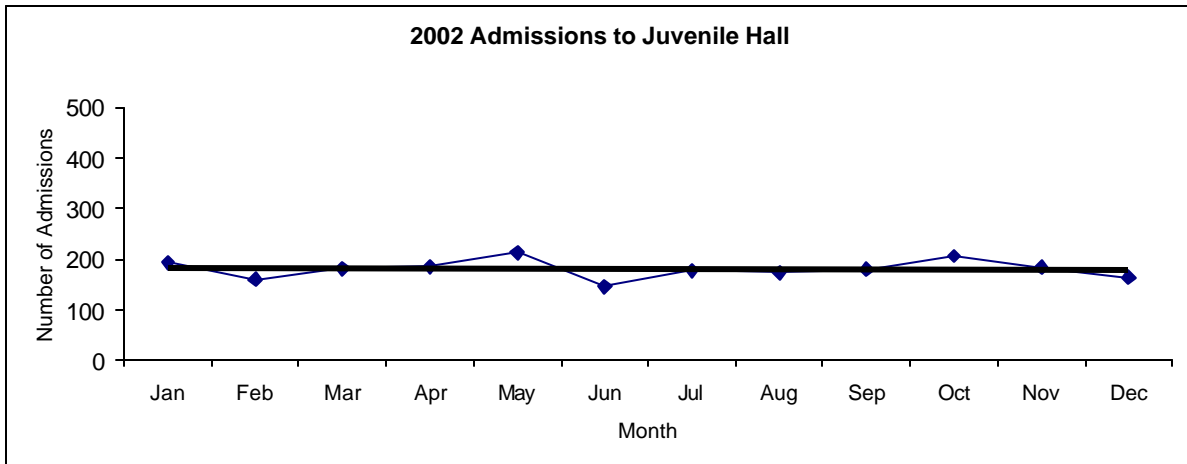


San Francisco Juvenile Probation  
**Juvenile Hall Admissions By Month**  
 (Calendar Years 2001-2003)

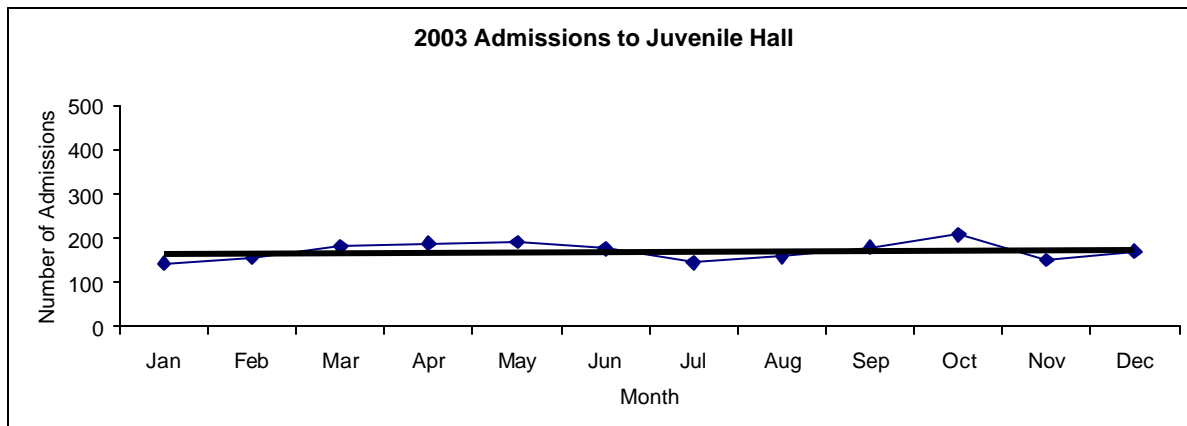
2001 Admissions	Jan	Feb	Mar	Apr	May	Jun	Jul	Aug	Sep	Oct	Nov	Dec	Total
	210	197	260	220	209	176	174	190	145	173	170	178	<b>2302</b>



2002 Admissions	Jan	Feb	Mar	Apr	May	Jun	Jul	Aug	Sep	Oct	Nov	Dec	Total
	193	160	181	185	213	145	177	173	179	206	183	164	<b>2159</b>



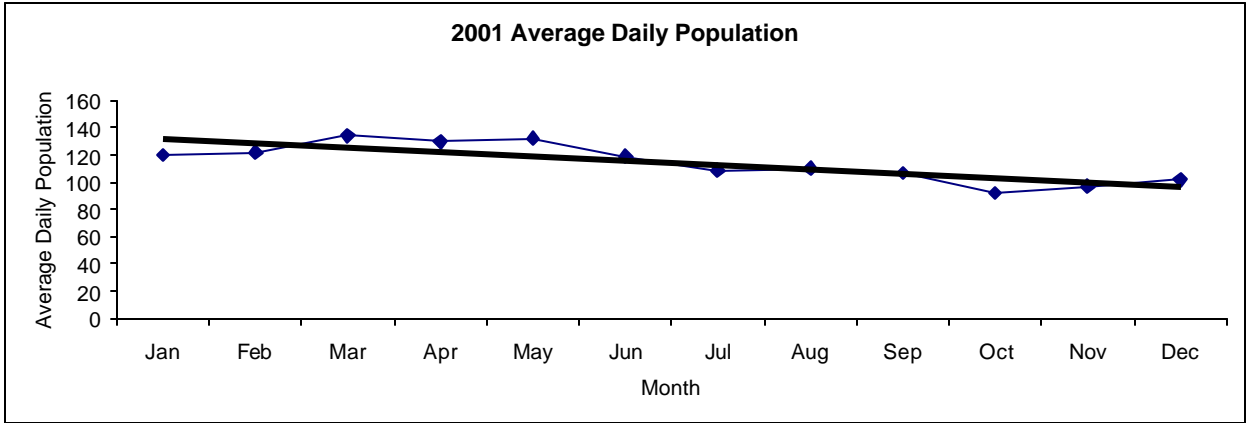
2003 Admissions	Jan	Feb	Mar	Apr	May	Jun	Jul	Aug	Sep	Oct	Nov	Dec	Total
	144	156	181	189	191	176	145	158	179	208	151	170	<b>2048</b>



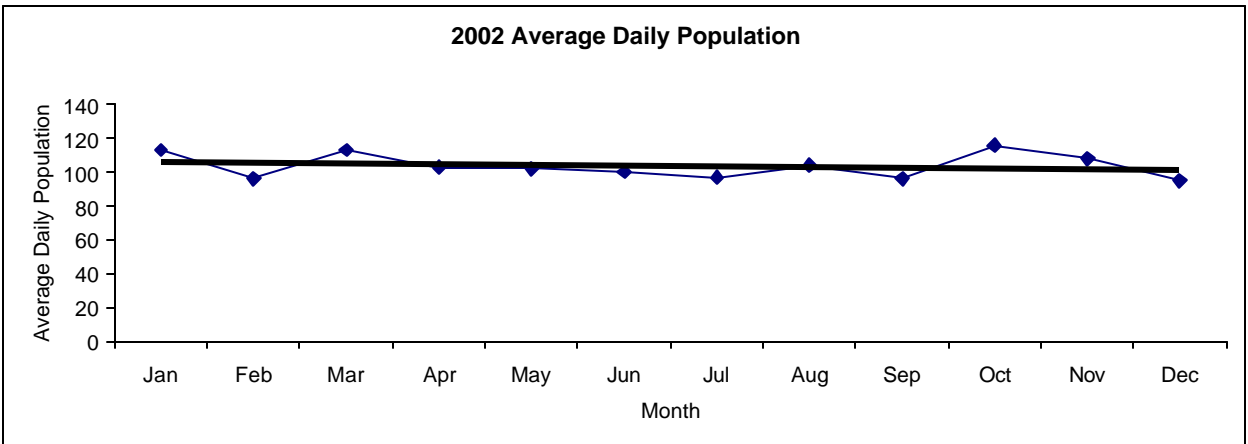


San Francisco Juvenile Probation  
**Juvenile Hall Average Daily Population By Month**  
 (Calendar Years 2001-2003)

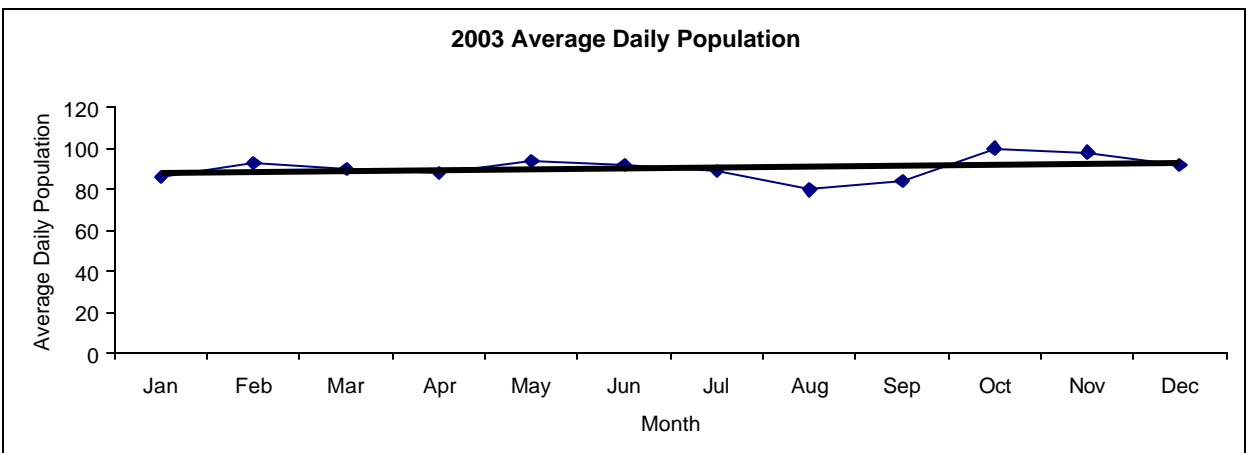
2001 Avg. Daily Pop.	Jan	Feb	Mar	Apr	May	Jun	Jul	Aug	Sep	Oct	Nov	Dec	Total
	120	122	134	130	132	119	109	110	107	92	97	102	<b>115</b>



2002 Avg. Daily Pop.	Jan	Feb	Mar	Apr	May	Jun	Jul	Aug	Sep	Oct	Nov	Dec	Total
	113	96	113	103	102	100	97	104	96	116	108	95	<b>104</b>

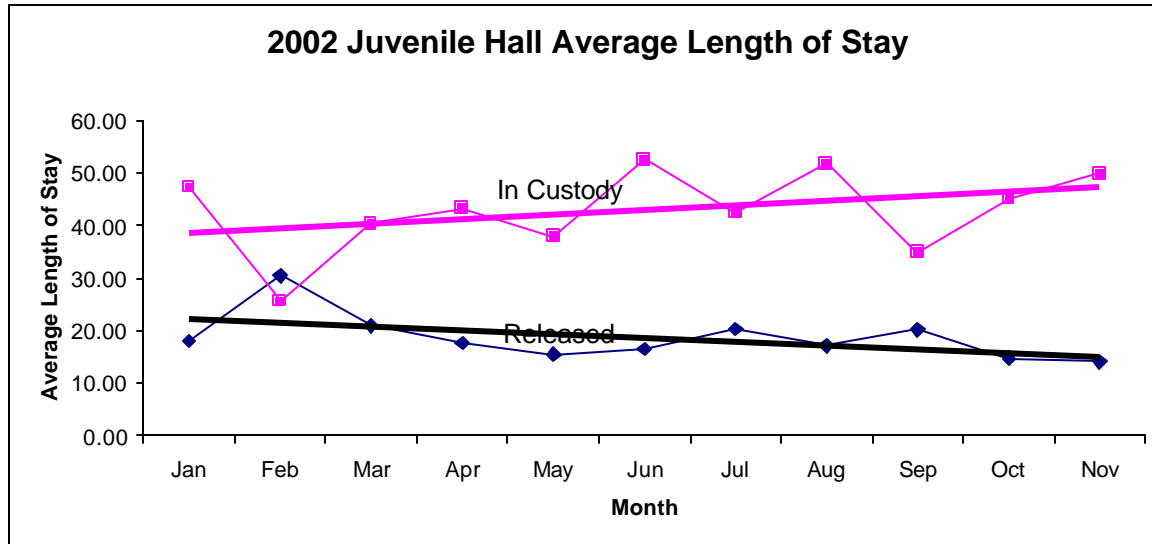


2003 Avg. Daily Pop.	Jan	Feb	Mar	Apr	May	Jun	Jul	Aug	Sep	Oct	Nov	Dec	Total
	86	93	90	88	94	92	89	80	84	100	98	92	<b>91</b>

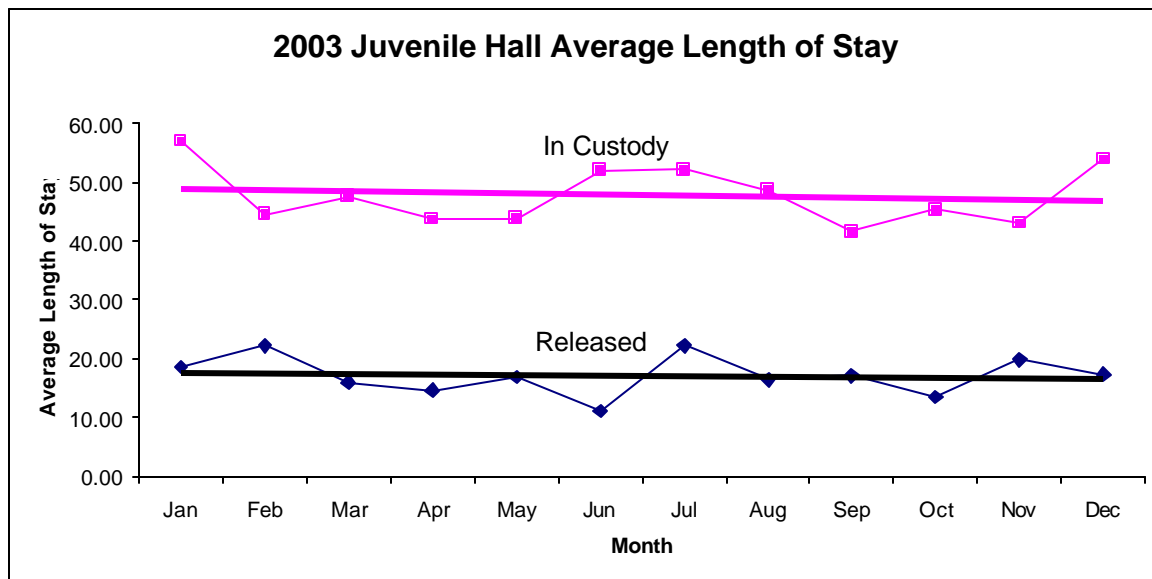


San Francisco Juvenile Probation  
**Juvenile Hall Average Length of Stay By Month**  
 (Calendar Years 2002-2003)

2002 Avg. Length of Stay	Jan	Feb	Mar	Apr	May	Jun	Jul	Aug	Sep	Oct	Nov	Dec	Total
<sup>1</sup> Released	18.05	30.44	20.88	17.65	15.50	16.45	20.22	17.15	20.16	14.67	14.03	18.30	<b>18.63</b>
<sup>2</sup> In Custody	47.30	25.63	40.35	43.29	37.86	52.57	42.41	51.77	34.82	45.11	49.85	58.85	<b>44.15</b>



2003 Avg. Length of Stay	Jan	Feb	Mar	Apr	May	Jun	Jul	Aug	Sep	Oct	Nov	Dec	Total
<sup>1</sup> Released	18.58	22.16	15.97	14.65	16.86	11.07	22.21	16.41	17.13	13.51	19.87	17.30	<b>17.14</b>
<sup>2</sup> In Custody	56.97	44.53	47.63	43.78	43.80	51.98	52.13	48.67	41.61	45.30	43.04	53.96	<b>47.78</b>



**Notes:** Less than one day of stay is calculated as one day.

<sup>1</sup> Length of stay is calculated according to release date for those who are released.

<sup>2</sup> For those still in custody, length of stay is calculated at the last day of the month.