

City and County of San Francisco



Juvenile Probation Department

Monthly Report for September 2004

Presented to the Juvenile Probation Commission

October 27th, 2004

Table of Contents

Section I Summary Reports

Juvenile Hall, Log Cabin Ranch Summary Statistics.....	1
Community Programs Summary Statistics	2
Probation Services Summary Statistics.....	4

Section II Current Month General Detail

Probation Referrals, Juvenile Admissions And Average Daily Population	6
Juvenile Hall Admissions and Average Daily Population.....	7
Commitments to out-of-home placement.....	8
Commitments to California Youth Authority.....	9
Log Cabin Ranch Admissions and Average Daily Population.....	10
Probation Referrals	11
Juvenile Hall And Log Cabin Ranch Incident Report	12
Juvenile Hall And Log Cabin Ranch Grievances Report.....	13
Bay Area Resident Juvenile Hall Comparison	14
Juvenile Hall Admissions.....	15
Juvenile Hall Detainees by Detention Reason.....	16
Juvenile Hall Average Daily Population by Rated Capacity.....	17
Juvenile Hall Average Length of Stay	18

Section III Demographics

Juvenile Hall Detainees by Sex and Race/Ethnic Origin.....	19
Juvenile Hall Detainees by Age	20
Juvenile Hall Detainees by Age and Sex.....	21
Juvenile Hall Detainees by Geographic Residence of Youth.....	22
Juvenile Hall Detainees by Race/Ethnic Origin and Sex.....	23

Section IV
Historical Information

2001-2003 Probation Referrals24
2002-2003 Juvenile Hall Admissions25
2002-2003 Juvenile Hall Average Daily Population.....26
2002-2003 Juvenile Hall Average Length of Stay by Month.....27



Section I

Summary Reports

Summary Report for the Month of September 2004

Juvenile Hall	<i>August 2003</i>	<i>August 2004</i>	<i>September 2003</i>	<i>September 2004</i>	<i>YTD 2003</i>	<i>YTD 2004</i>
Admissions	159	121	179	145	1527	1432
Average Daily Population	80.48	84	84	81	88	95.67
Average Length of Stay (Releases)	16.41	19.52	17.13	22.55	17.23	17.60
Average Length of Stay (In Custody)	46.67	67.37	41.61	60.14	47.90	59.38
Releases	157	133	174	150	1525	1438
Log Cabin Ranch						
Admissions:						
First Time Commitments	2	1	5	2	23	19
Recommitments	0	0	0	0	1	0
<i>Total</i>	2	1	5	2	24	19
Releases:						
Graduated	1	3	1	1	20	21
Escape	0	0	0	0	0	0
Other releases	0	0	0	2	10	4
<i>Total</i>	1	3	1	3	30	25
Average Daily Population	23	14	25	13	24	16
Grievances Filed						
Juvenile Hall:						
B1	0	0	0	0	4	3
B2	0	7	1	1	1	16
B3	0	0	0	0	0	1
B4	1	2	0	0	14	3
B5	0	5	0	0	5	10
G2 (CO-ED)	0	0	0	0	3	2
<i>Total</i>	1	14	1	1	27	35
Log Cabin Ranch	0	0	0	0	0	0
Incident Reports						
Juvenile Hall	10	4	10	5	116	95
Log Cabin Ranch	0	0	2	0	10	10
<i>Total</i>	10	4	12	5	126	105

Summary Report for the Month of September 2004

Community Programs	<i>Program Vacancies by Agency on September 2004</i>	<i>Active in program August 2003</i>	<i>Active in Program August 2004</i>	<i>Active in Program September 2003</i>	<i>Active in Program September 2004</i>
IHBS Monthly Client Count					
BayView Hunters Point Foundation	2	16	13	16	13
Chinatown Youth Center	2	10	13	10	13
Morrisania West, Inc.	3	11	12	11	12
Samoan Community Development Center	15	0	0	9	0
Potrero Hill Neighborhood House	6	11	9	7	9
Instituto Familiar de La Raza	8	22	22	22	22
Vietnamese Youth Development Center	0	7	7	7	7
Brothers Against Guns	0	5	30	16	30
<i>Total</i>	36	82	106	98	106
<i>September 2004 Percent Program Utilization</i>	79%				
<i>September 2004 Percent Change from last report</i>	0%				

Summary Report for TANF and Girls Programs
Month: August 2004

PROGRAM	ANNUAL GOAL	NUMBER SERVED
California Community Dispute Services: Youth Accountability Boards	45	15
CARECEN: Tattoo Removal and Case Management	45	17
Center for Young Women's Development: Girls Services	40	35
Community Works – Girls Diversion Program	24	0
Community Works – Girls Therapeutic Arts Curriculum in Juvenile Hall	100	15
Community Works – ROOTS Support for Children of Incarcerated Parents	40	0
Edgewood Kinship Support Network	30	13
Family Restoration House: Life Skills	30	18
Girls 2000: Girls Services and Family Support Services	20	20
Instituto Familiar de la Raza – Case Management	10	2
Mission Neighborhood Center: Young Queens on the Rise – Girls Services	35	25
Performing Arts Workshop: Arts Education at Impact High School	30	27
SAGE: Girls Services	35	20
Samoan Community Development Center: Anger Management	75	0
Special Services for Groups – Occupational Therapy Training Program	50	44
United Way/Girls Justice Initiative: Detention-based Case Management & Inside Mentoring Program	300 72	25 23
Urban Services YMCA: Bayview Beacon Truancy Support	50	0
YGCIC GED & Focus Vocational Programs	105	0
YWCA – CITS and FITS Girls Mentorship	64	33

Summary Report for the Month of September 2004

Probation Services	<i>August 2004</i>	<i>September 2004</i>	<i>Year To Date 2004</i>
Probation Referrals	184	216	2074
Petitions	67	82	741
Selected Court Dispositions:			
California Youth Authority	1	0	9
Log Cabin Ranch	2	1	15
Out of Home Placement	20	16	146
Other Probation	23	27	257
Violation of Probation Petitions Filed	16	15	142
California Youth Authority Monthly Count			
Institutions:			
Males	42	39	
Females	3	3	
Total	45	42	
Parole:			
Males	25	29	
Females	2	2	
Total	27	31	

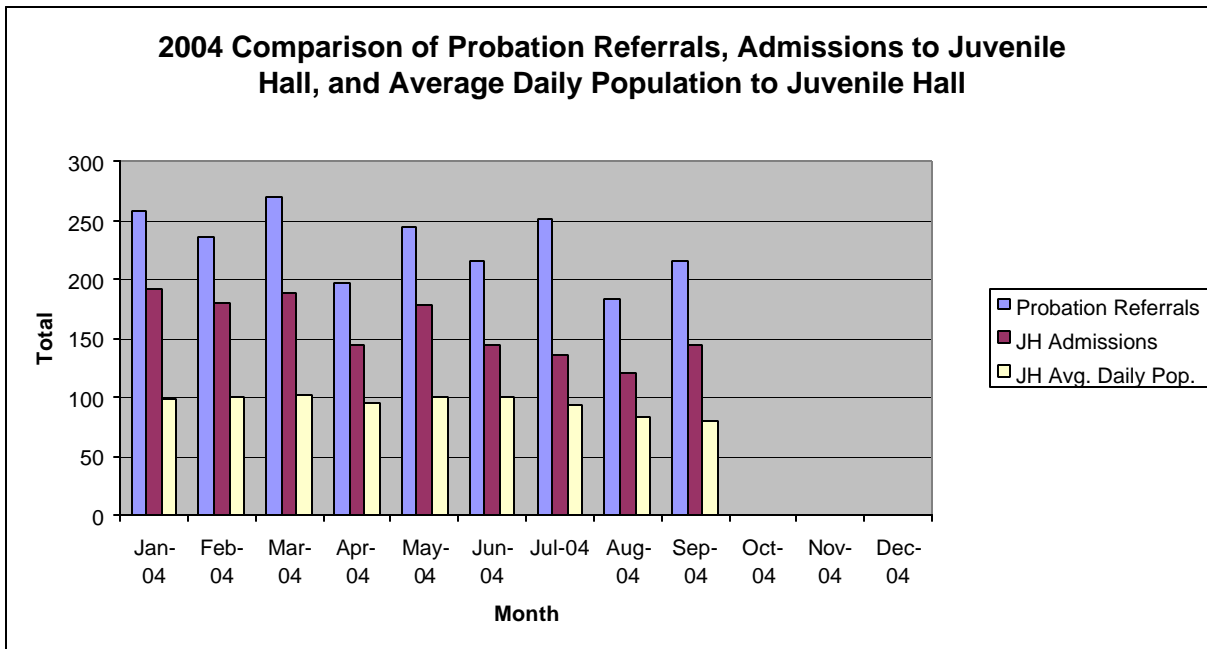
Summary Report for the Month of September 2004

Probation Services			
Caseload List	August 2004	September 2004	September Average # Youth by PO
South Intake	225	214	42
North Intake	181	202	33
Prevention Diversion	156	145	16
Serious Offenders	97	95	15
Supervision	186	194	24
County Placement	24	20	20
Private Placement	189	198	18
Drug Court	23	28	28
Family Integrated Treatment Services	110	105	13
<i>Total</i>	1191	1201	23
Special Services Unit	New	Closed	Active at end of Month
Record Sealings	13	6	156
Stepparent Adoptions	0	1	54
Terminations	0	3	12
Marriage Consents	2	0	3
Custody Evaluations	0	0	0
	Entered	Completed	Active at end of Month
Community Service	20	10	1197
		Referred	Completed at end of Month
COPS (Next class starts 10/02/04)		0	0
Street Law (Still in Session)		14	0
Theft Awareness		20	9
Anger Management for boys (Still in Session)		2	0
Anger Management for girls (Still in Session)		3	0
Life Management Skills (Next class starts 10//04)		0	0
Kids Turn Non-Violent Family Skills (Net class 10/7/04)		0	0
Information, Record Checks, Research & Photo Copying Juvenile Records For:	August 2004	September 2004	Year to Date 2004
Job Corps, Probation Departments,			
Military, Law Enforcement,			
Misc., (letters, Memos, Forms, etc.)	146	143	1202

Section II
Current Month
General Detail

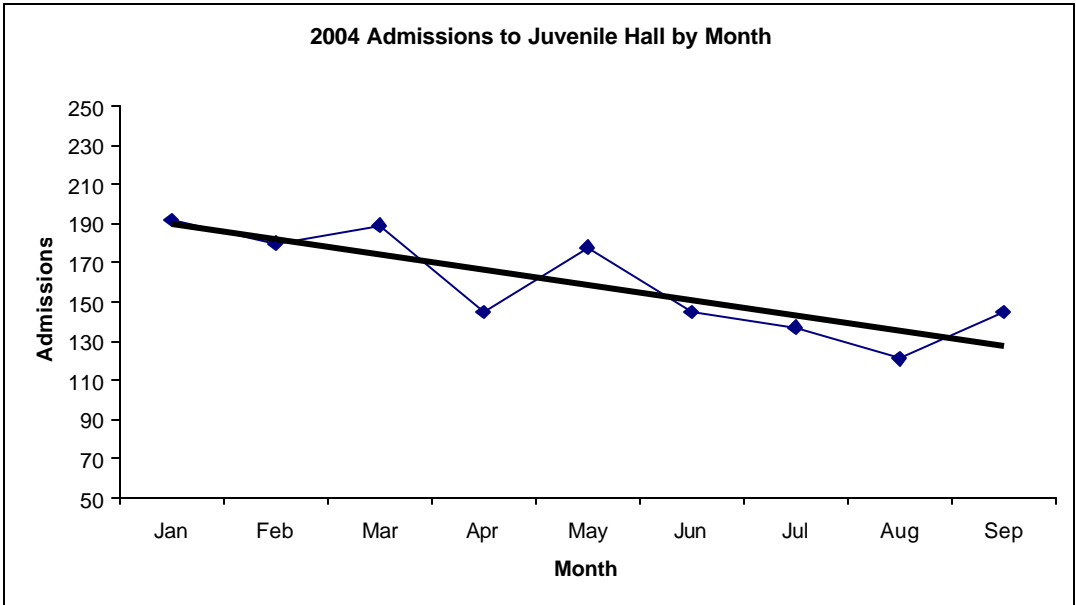
San Francisco Juvenile Probation

	Jan-04	Feb-04	Mar-04	Apr-04	May-04	Jun-04	Jul-04	Aug-04	Sep-04	Oct-04	Nov-04	Dec-04
Probation Referrals	259	236	270	197	245	216	251	184	216			
JH Admissions	192	180	189	145	178	145	137	121	145			
JH Avg. Daily Pop.	98	101	103	96	101	101	94	84	81			

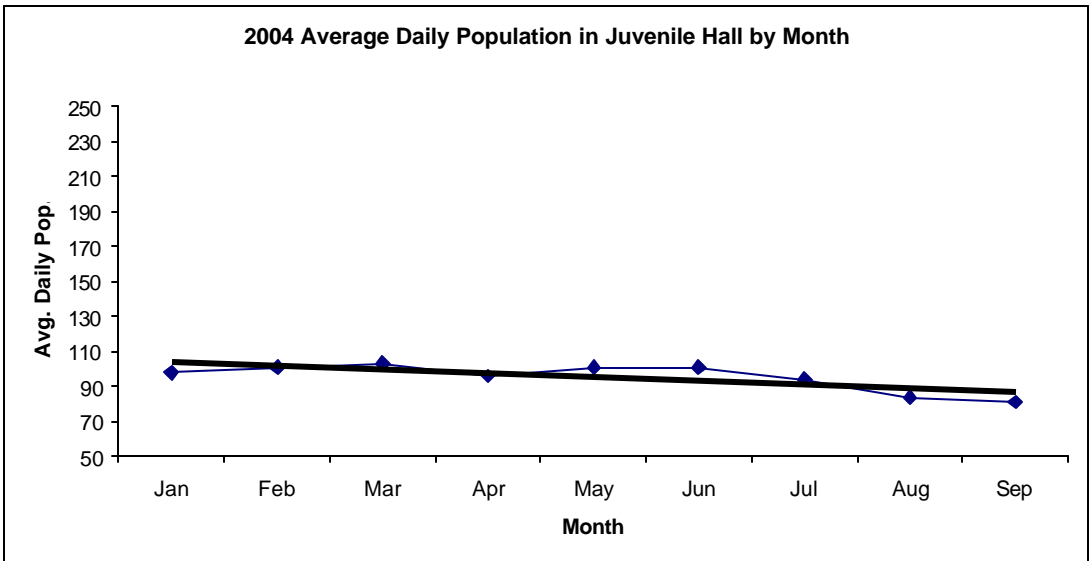


San Francisco Juvenile Probation Admissions and Average Daily Population In Juvenile Hall (Calendar Year 2004)

Admissions	Jan	Feb	Mar	Apr	May	Jun	Jul	Aug	Sep	Oct	Nov	Dec	Total
2004	192	180	189	145	178	145	137	121	145				1432



Avg. Daily Pop.	Jan	Feb	Mar	Apr	May	Jun	Jul	Aug	Sep	Oct	Nov	Dec	Total
2004	98	101	103	96	101	101	94	84	81				95

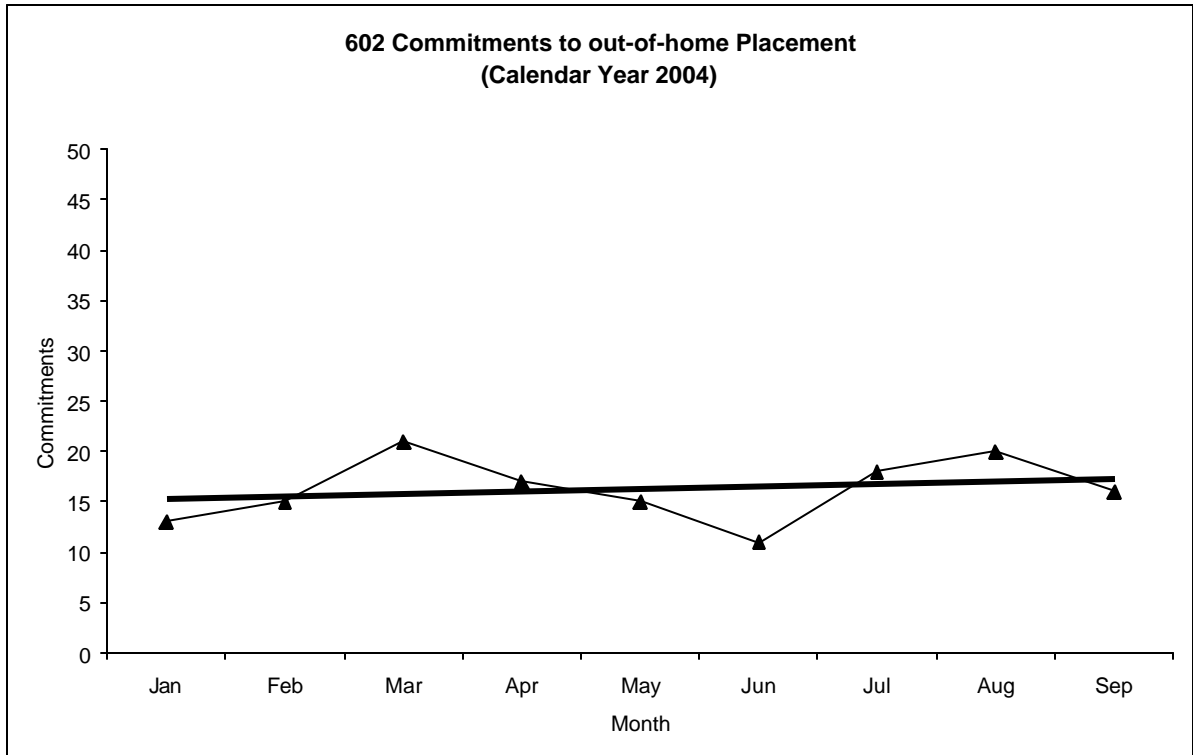


Out-of-Home Placement¹

Commitments of 602's

Calendar Year 2004

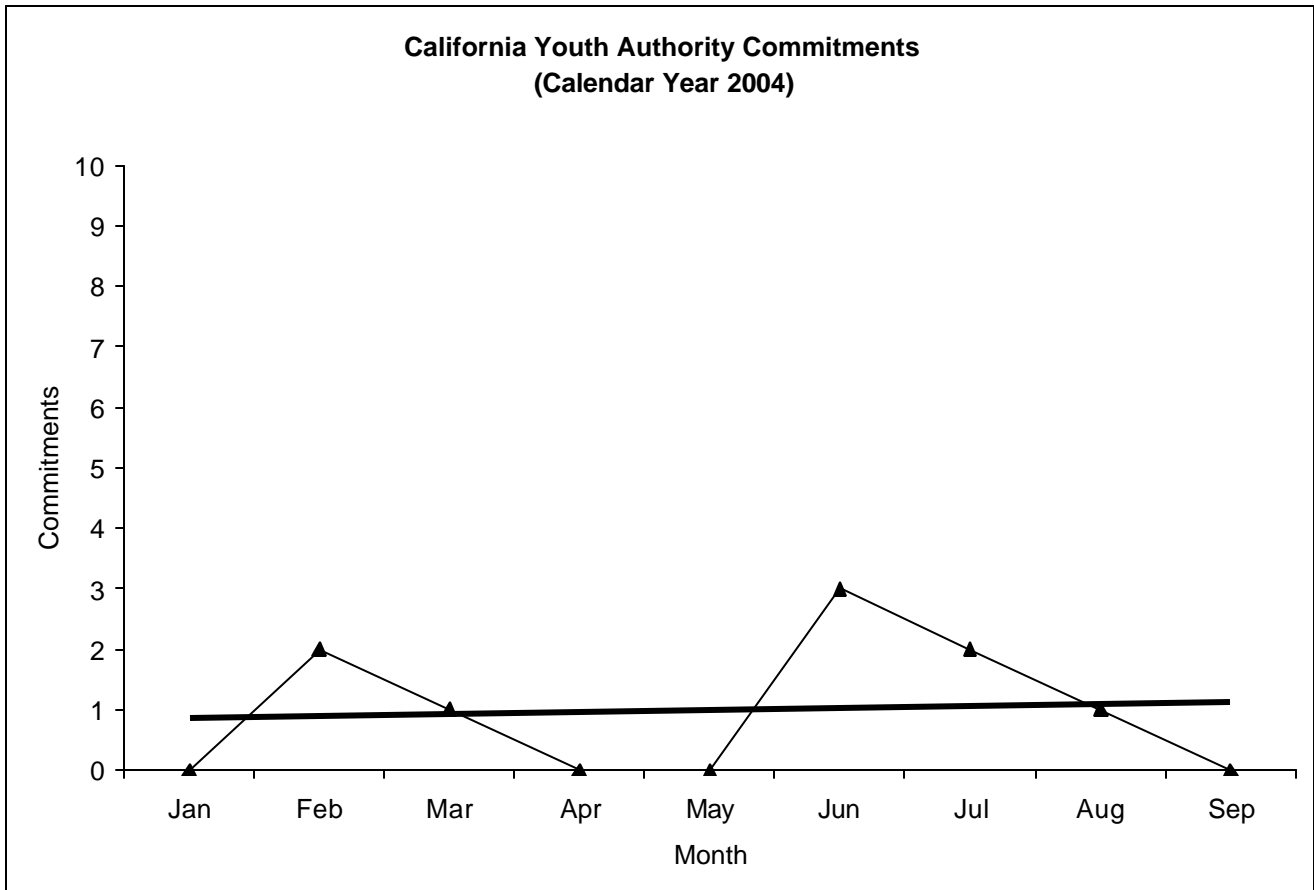
Commitments	Jan	Feb	Mar	Apr	May	Jun	Jul	Aug	Sep	Oct	Nov	Dec	Total
2004	13	15	21	17	15	11	18	20	16				146



¹ This report is based on 602 Commitments to out-of-home placements. If there is a 601 commitment, it will show as a footnote here. Figures are regularly updated to include reports from previous reporting periods.

California Youth Authority Commitments (Calendar Year 2004)

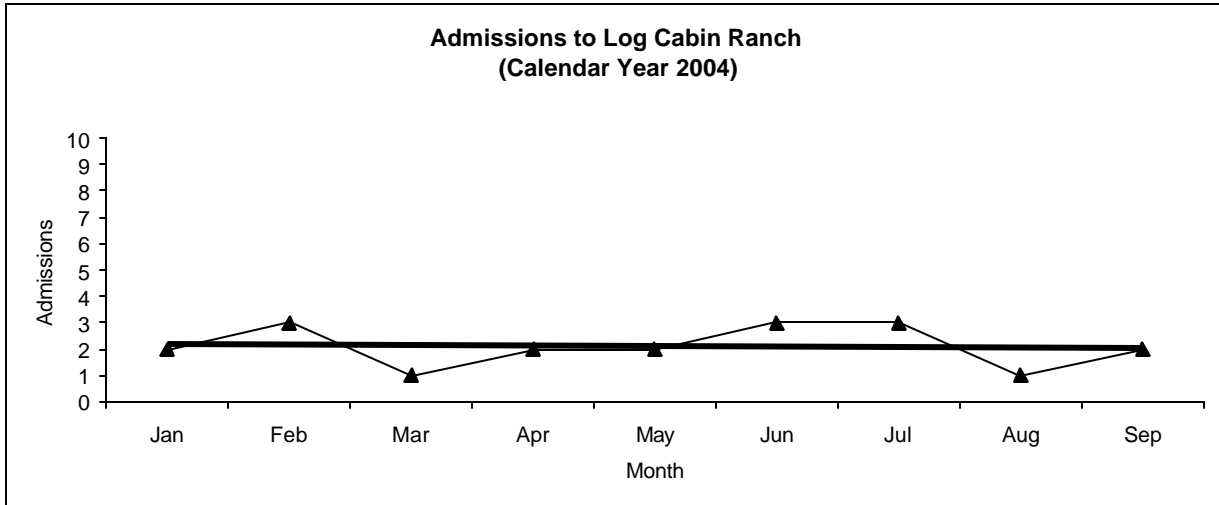
Commitments	Jan	Feb	Mar	Apr	May	Jun	Jul	Aug	Sep	Oct	Nov	Dec	Total
2004	0	2	1	0	0	3	2	1	0				9



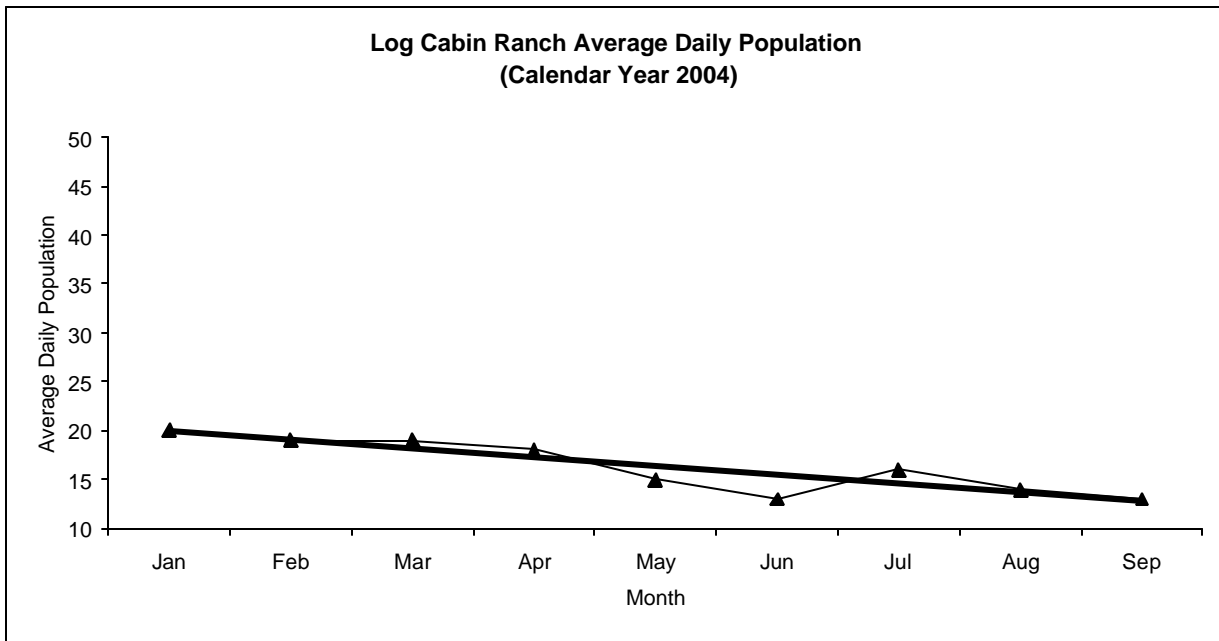
Log Cabin Ranch

Admissions and Average Daily Population (Calendar Year 2004)

Admissions	Jan	Feb	Mar	Apr	May	Jun	Jul	Aug	Sep	Oct	Nov	Dec	Total
2004	2	3	1	2	2	3	3	1	2				19

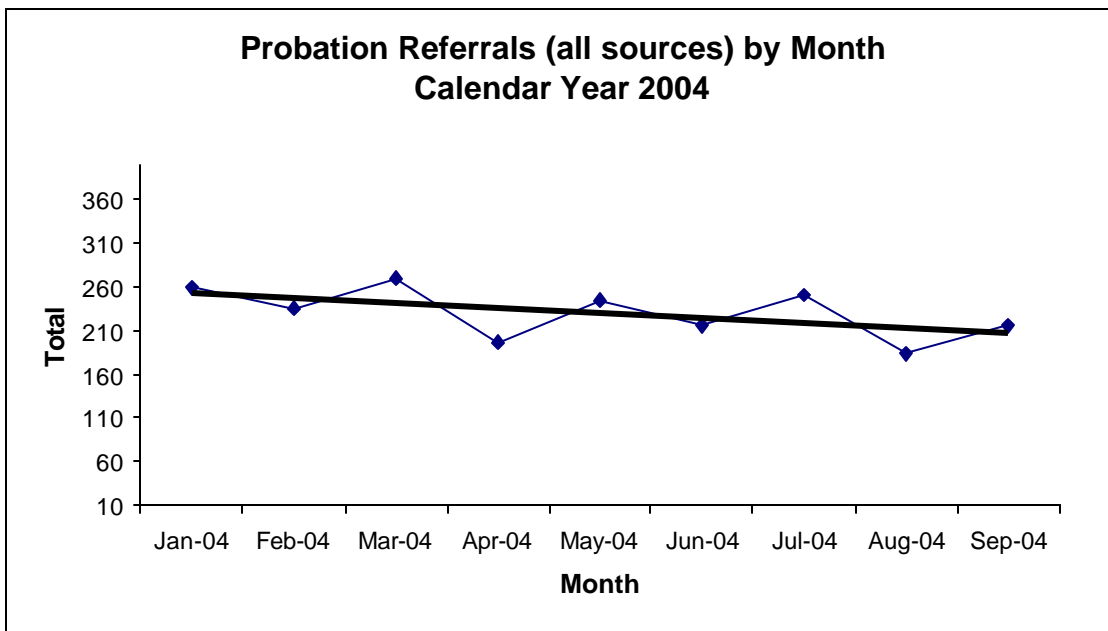


Avg. Daily Pop.	Jan	Feb	Mar	Apr	May	Jun	Jul	Aug	Sep	Oct	Nov	Dec	Total
2004	20	19	19	18	15	13	16	14	13				16.33



**Probation Referrals (all sources) by Month
(602 W&I)**

Jan-04	259
Feb-04	236
Mar-04	270
Apr-04	197
May-04	245
Jun-04	216
Jul-04	251
Aug-04	184
Sep-04	216
Oct-04	
Nov-04	
Dec-04	



SAN FRANCISCO JUVENILE PROBATION DEPARTMENT
 MONTHLY INCIDENT REPORT FORM
 MONTH/YEAR: SEPTEMBER 2004

Log Cabin Ranch	Battery on Staff	Injury to Staff due to Restraint of Minor	Fight	Battery Youth on Youth	Attempted Escape	AWOL	Attempted Suicide	Serious Contraband (Weapon Illegal Drug)
	0	0	0	0	0	0	0	0
	Battery on Staff with Injury	Fire	Fight with Injury	Battery Youth on Youth with Injury	Escape	Death	Suicide	Major Property Destruction
0	0	0	0	0	0	0	0	0
Juvenile Hall	Battery on Staff	Injury to Staff due to Restraint of Minor	Fight	Battery Youth on Youth	Attempted Escape	AWOL	Attempted Suicide	Serious Contraband (Weapon Illegal Drug)
	0	0	1	1	0	0	0	0
	Battery on Staff with Injury	Fire	Fight with Injury	Battery Youth on Youth with Injury	Escape	Death	Suicide	Major Property Destruction
0	0	1	2	0	0	0	0	0

Grievances Filed September 2004

San Francisco Juvenile Probation Department

Juvenile Hall

Grievance Documents:

During the month of August, there were one (1) grievances, zero (0) Meritless documents submitted under **Juvenile Title 15 & 24 Minimum Standards for Juvenile Facilities Guidelines 2001 Revisions.**

All documents would have been logged as grievances. In addition, all the grievances would have been referred to the appropriate departments and staff. The grievances would have been resolved via exchange of ideas between supervisory staff, residents, and the office of the Ombudsman.

Grievance

- 1) **B1** Youth indicates, that he was denied access of medical treatment. The youth has an asthma problem, he requested that the staff either give him his inhaler or contact the nurse and neither was done. The youth was instructed to go lay on his bed, by the staff.

The office of the Ombudsman would like to take this opportunity too inform you, that due to the changes in the Ombudsman's scope of services; there will be a change in how this report will be constructed. Furthermore, I anticipate an increase in grievances or complaints.

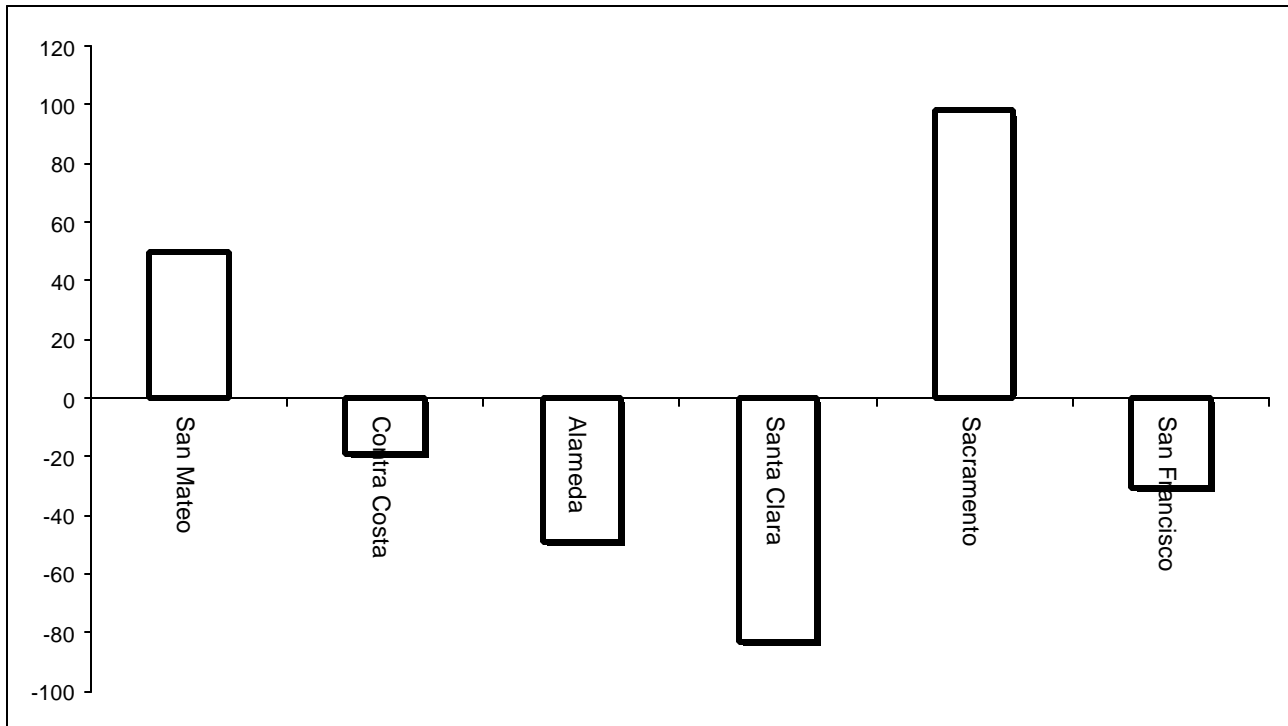
Area of Infraction	Title 15 Article/Section	Coed	Girls Unit	B1	B2	B3	B4	B5	TOTAL
Health Services	8.1433		0	0	1	0	0	0	1
Discipline Process	7.1391		0	0	0	0	0	0	0
Meritless	12.2		0	0	0	0	0	0	0
Harassment	12.2		0	0	0	0	0	0	0
Total		closed	0	0	1	0	0	0	1

Log Cabin Ranch

Type	Log Cabin Ranch
Food/Snacks	0
Laundry	0
Personal Property	0
Phone Calls	0
Procedures	0
Head Call	0
Discipline	0
Complaints vs. Staff	0
Cottage Change	0
Medical	0
School	0
Probation	0
Miscellaneous	0
Total	0

Bay Area Resident Juvenile Hall Comparison Over/Under Capacity

on October 1st, 2004

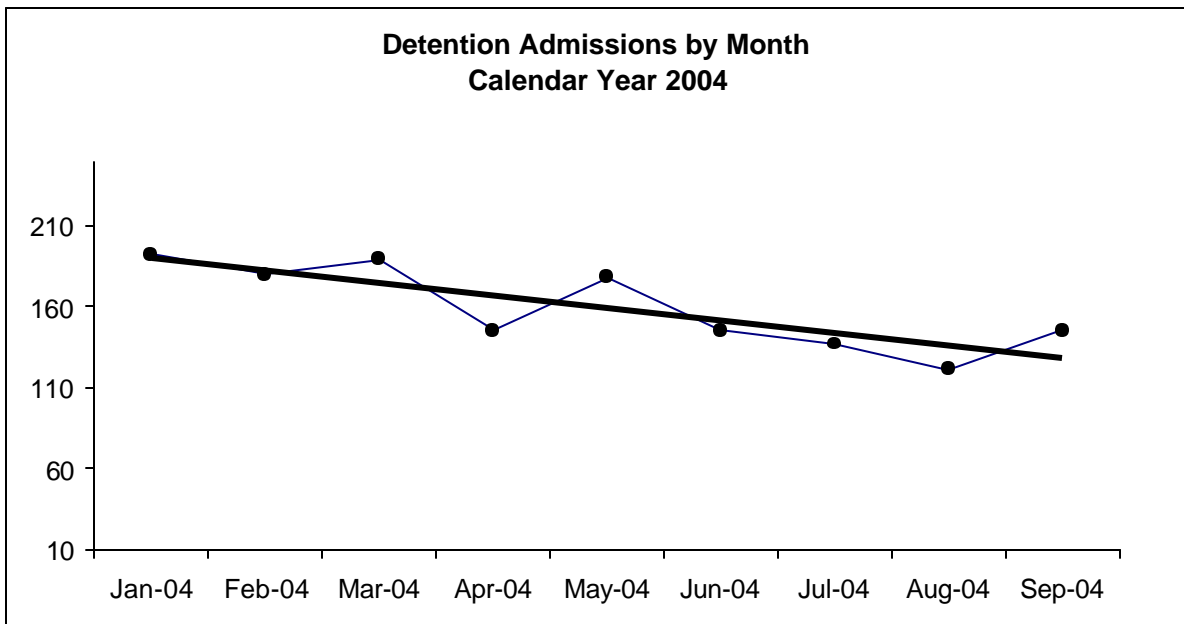


	Rated Capacity	Actual	Over/Under Capacity
San Mateo	130	180	50
Contra Costa	160	141	-19
Alameda	288	239	-49
Santa Clara	329	246	-83
Sacramento	256	354	98
San Francisco	104	73	-31

Juvenile Hall Admissions by Month Calendar Year 2004

Detention Admissions by Month

Jan-04	192
Feb-04	180
Mar-04	189
Apr-04	145
May-04	178
Jun-04	145
Jul-04	137
Aug-04	121
Sep-04	145
Oct-04	
Nov-04	
Dec-04	

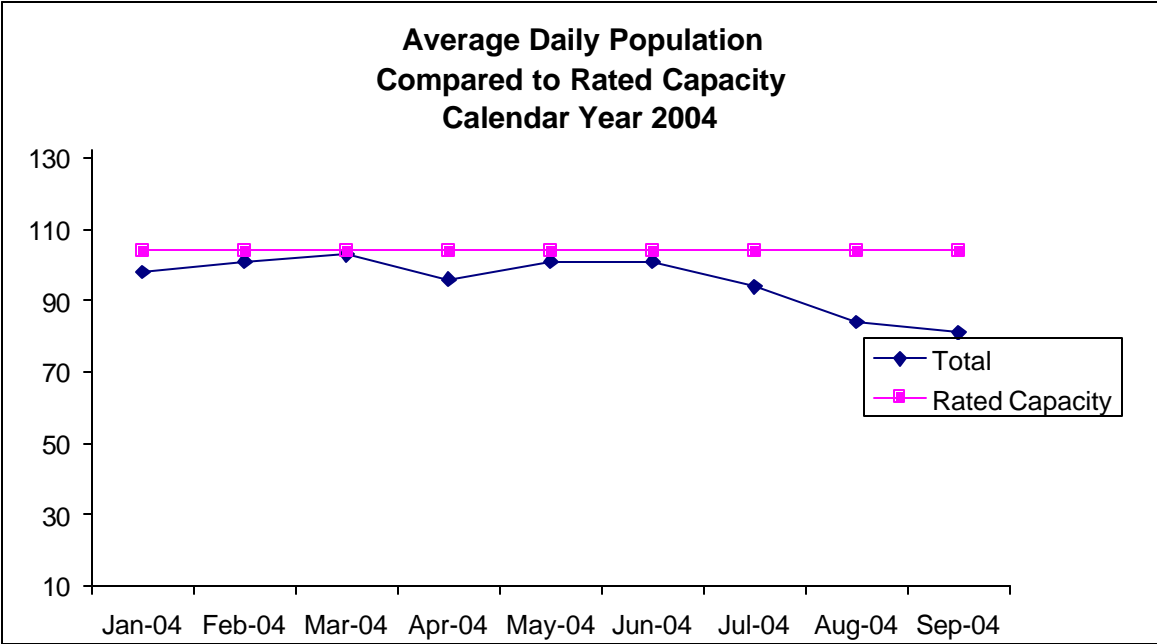


**Characteristics of Juvenile Hall Detainees on September 30th, 2004
Using CJIS Code From the Department of Justice**

Detention Reason	Offense Code	MF	Count	%
MURDER	187 (A) PC	F	1	1.30%
ATTEMPTED MURDER	664 /187 (A) PC	F	2	2.60%
ORAL COPULATION IN CONCERT W/FORCE/ETC	288 A (D)(1) PC	F	3	3.90%
RAPE BY FORCE/FEAR/ETC	261 (A)(2) PC	F	1	1.30%
LEWD OR LASCIVIOUS ACTS W/CHILD UNDER 14 YEARS	288 (A) PC	F	1	1.30%
CARJACKING	215 PC	F	1	1.30%
ROBBERY	212.5 PC	F	2	2.60%
TRANSPORT/SELL NARCOTIC/CONTROLLED SUBSTANCE	11352 (A) HS	F	4	5.19%
POSSESS/PURCHASE COCAINE BASE FOR SALE	11351.5 HS	F	4	5.19%
BURGLARY	459 PC	F	2	2.60%
ROBBERY:SECOND DEGREE	212.5(C) PC	F	7	9.09%
SELL/FURNISH/ETC MARIJUANA/HASHISH	11360 (A) HS	F	1	1.30%
ASSAULT WITH FIREARM ON PERSON	245 (A)(2) PC	F	1	1.30%
FORCE OR ADW NOT FIREARM:GBI LIKELY	245 (A)(1) PC	F	5	6.49%
BATTERY W/SERIOUS BODILY INJURY	243 (D) PC	F	1	1.30%
ATTEMPTED ROBBERY:FIRST DEGREE	664 /212.5(A) PC	F	1	1.30%
BATTERY ON CUSTODIAL OFFICER	243.1 PC	F	1	1.30%
POSSESS MARIJUANA FOR SALE	11359 HS	F	1	1.30%
CARRY CONCEALED WEAPON IN VEHICLE W/PRIOR FELONY CONVICTION	12025 (A)(1) PC	F	1	1.30%
THREATEN CRIME W/INTENT TO TERRORIZE	422 PC	F	1	1.30%
BURGLARY:SECOND DEGREE	459 PC	F	1	1.30%
GRAND THEFT FROM PERSON	487 (C) PC	F	1	1.30%
TAKE VEHICLE W/O OWNER'S CONSENT/VEHICLE THEFT	10851 (A) VC	F	2	2.60%
RECEIVE/ETC KNOWN STOLEN PROPERTY	496 (A) PC	F	1	1.30%
POSSESS ANY ASSAULT WEAPON	12280 (B) PC	F	1	1.30%
CARRY LOADED FIREARM IN PUBLIC UNDER SPECIFIC CIRCUMSTANCES	12031 (A)(1) PC	F	1	1.30%
CONSPIRACY	182 (A) PC	F	1	1.30%
OBSTRUCT/RESIST/ETC PUBLIC/PEACE OFFICER/EMERGENCY MED TECH	148 (A)(1) PC	M	4	5.19%
PETTY THEFT	484 (A) PC	M	1	1.30%
FAIL TO OBEY ORDER OF JUVENILE COURT 602 WI	777 (A)(2) WI	M	5	6.49%
CHANGE OF PLACEMENT/PLACEMENT FAILURE	737 WI	M	4	5.19%
VIOLATION(S) OF HOME SUPERVISION CONDITION	628.1 WI	M	1	1.30%
COURT ORDER 602	CTORD 602		8	10.39%
BENCH WARRANT	BENCH WARRANT		2	2.60%
WARRANT 602	WRNT602		3	3.90%
		Total	77	100.00%

**Average Daily Population
By Rated Capacity
Calendar Year 2004**

	Total	Rated Capacity
Jan-04	98	104
Feb-04	101	104
Mar-04	103	104
Apr-04	96	104
May-04	101	104
Jun-04	101	104
Jul-04	94	104
Aug-04	84	104
Sep-04	81	104
Oct-04		104
Nov-04		104
Dec-04		104



Juvenile Hall Average Length of Stay

For the Month of September 2004

¹Released

Range of Days	<i>1-10 days</i>	<i>11-20 days</i>	<i>21-30 days</i>	<i>30 or more days</i>	Total
# of Youth Released	96	14	9	31	150
% of Population	71.30%	8.70%	3.80%	16.30%	100%
# of Days	301	216	233	2633	3383
% of Total Days	8.90%	6.38%	6.89%	77.83%	100%
Average Length of Stay	3.14	15.43	25.89	84.94	22.55

²In Custody

Range of Days	<i>1-10 days</i>	<i>11-20 days</i>	<i>21-30 days</i>	<i>30 or more days</i>	Total
# of Youth Detained	21	18	7	31	77
% of Population	38.60%	18.10%	12.60%	30.70%	100%
# of Days	104	268	164	4095	4631
% of Total Days	2.25%	5.79%	3.54%	88.43%	100%
Average Length of Stay	4.95	14.89	23.43	132.10	60.14

Notes: Less than one day of stay is calculated as one day.

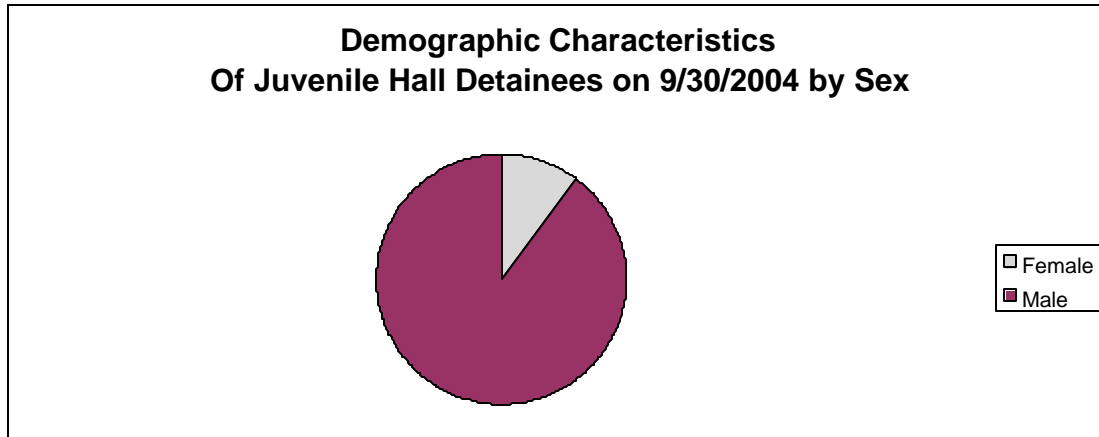
¹Length of stay is calculated according to release date for those who are released.

²For those still in custody, length of stay is calculated at the last day of the month.

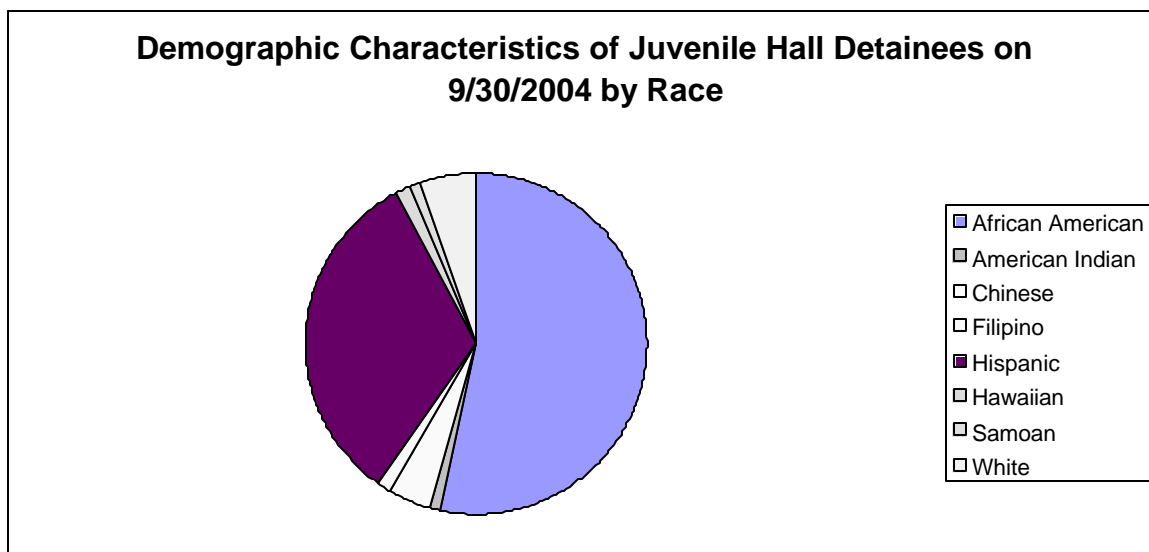
Section III

Demographics

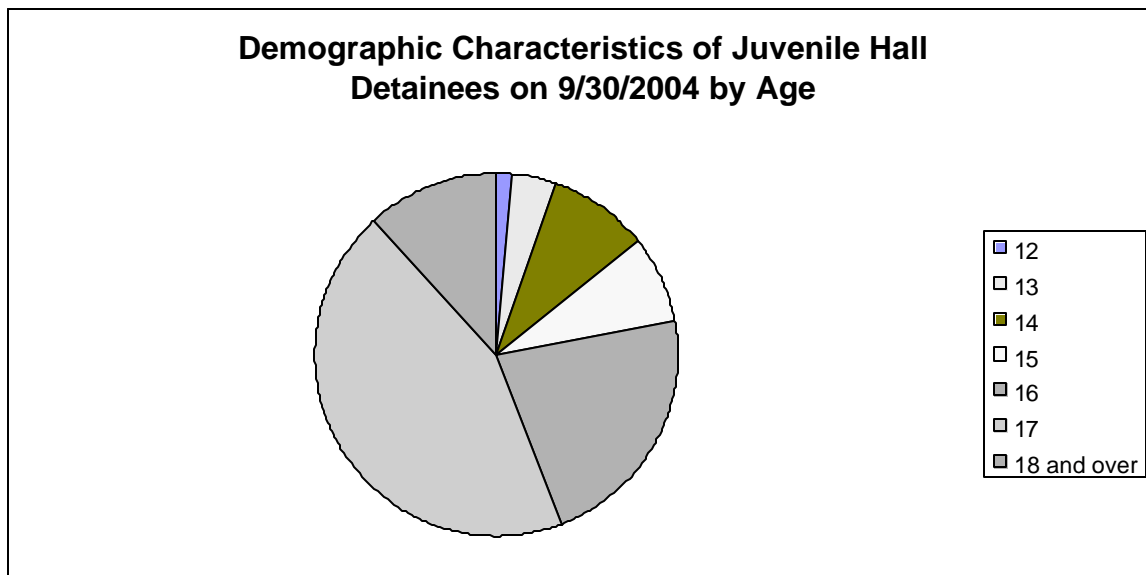
Sex	Frequency	Percent
Female	8	10.39%
Male	69	89.61%
Total	77	100.00%



Race/Ethnic Origin	Frequency	Percent
African American	41	53.25%
American Indian	1	1.30%
Chinese	3	3.90%
Filipino	1	1.30%
Hispanic	25	32.47%
Hawaiian	1	1.30%
Samoan	1	1.30%
White	4	5.19%
Total	77	100.00%

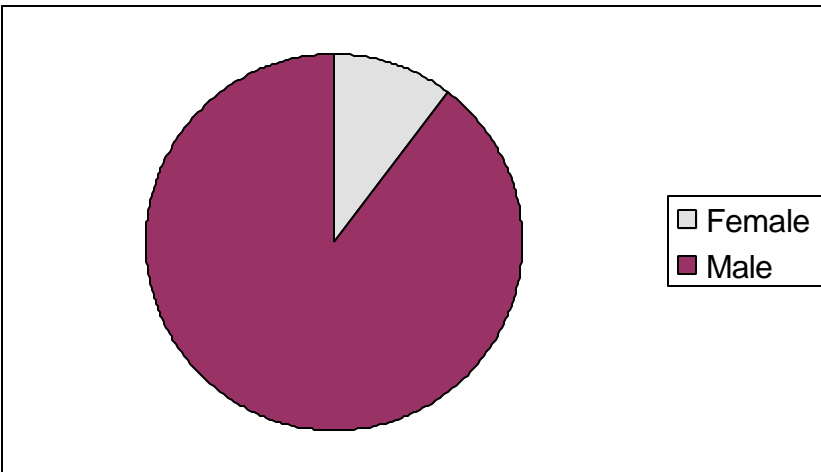


Age	Frequency	Percent
12	1	1.30%
13	3	3.90%
14	7	9.09%
15	6	7.79%
16	17	22.08%
17	34	44.16%
18 and over	9	11.69%
Total	77	100.00%



Demographic Characteristics of Juvenile Hall Detainees
on 9/30/2004
Age by Sex

Age	Female	Male	Total	
12	0	1	1	1.30%
13	0	3	3	3.90%
14	0	7	7	9.09%
15	1	5	6	7.79%
16	3	14	17	22.08%
17	4	30	34	44.16%
18 and over	0	9	9	11.69%
Total	8	69	77	100.00%
	10.39%	89.61%	100.00%	



Demographic Characteristics
Of Juvenile Hall Detainees on September 30th, 2004

Geographic Residence of Youth	Frequency	Percent
Richmond	2	2.6
Marina	1	1.3
North of Market/Downtown	1	1.3
Western Addition	10	13.0
South of Market/Tenderloin	2	2.6
Sunset	3	3.9
Haight Ashbury/Castro	1	1.3
Inner Mission	9	11.7
Potrero	1	1.3
Ingleside (West of Twin Peaks)	6	7.8
Outer Mission	10	13.0
Bayview	15	19.5
*Non-San Francisco and Unavailable	16	20.8
	-----	-----
Total	77	100.0

*Non-San Francisco and Unavailable	Frequency	Percent
ANZA	1	6.3
FULLERTON	1	6.3
LAKEPORT	1	6.3
OAKLAND	1	6.3
PASO ROBLES	1	6.3
PITTSBURG	1	6.3
UNAVAILABLE	10	62.5
	-----	-----
Total	16	100.0

Demographic Characteristics
Of Juvenile Hall Detainees on September 30th, 2004

Race/Ethnic Origin by Sex

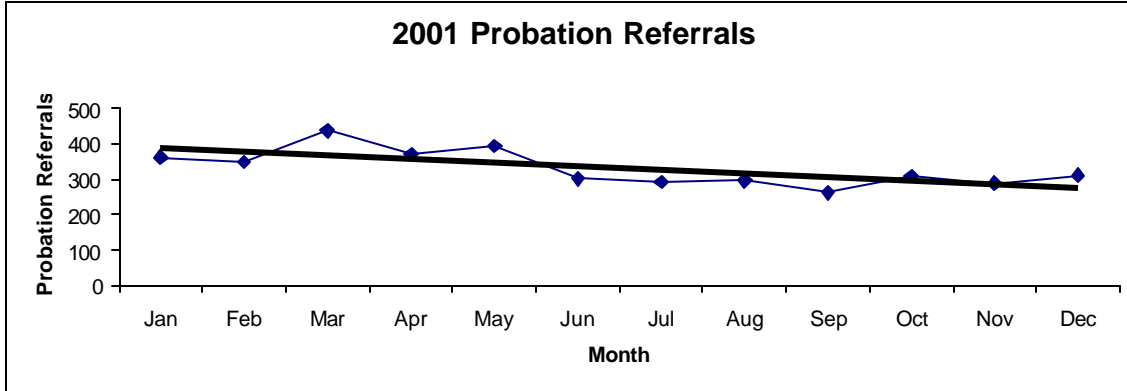
Count	SEX		Row Total
	Female	Male	
	F	M	
RACE			
AFRICAN AMERICAN	3	38	41 53.2
CHINESE	1	2	3 3.9
FILIPINO	1		1 1.3
HISPANIC	1	24	25 32.5
AMERICAN INDIAN		1	1 1.3
SAMOAN		1	1 1.3
HAWAIIAN		1	1 1.3
WHITE	2	2	4 5.2
Column Total	8 10.4	69 89.6	77 100.0

Section IV

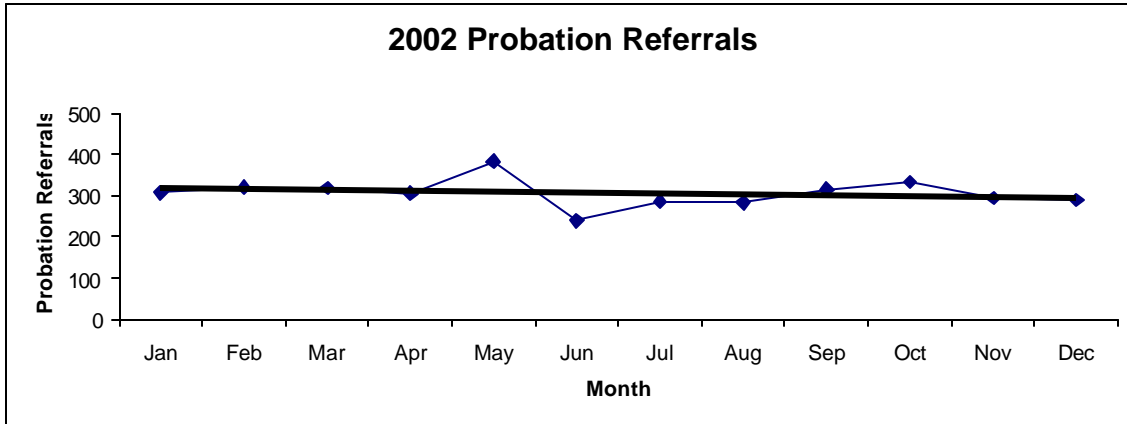
Historical Information

San Francisco Juvenile Probation
Probation Referrals (all sources) By Month
 (2001-2003)

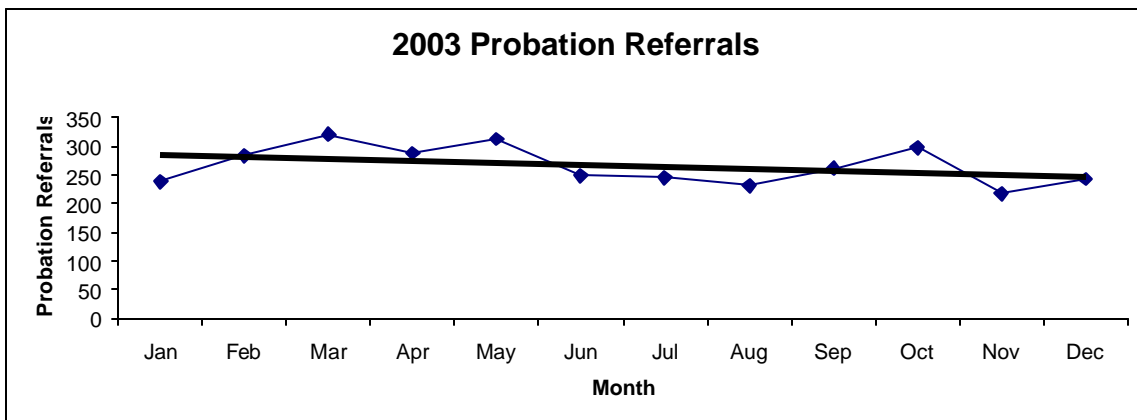
2001 Probation Referrals	Jan	Feb	Mar	Apr	May	Jun	Jul	Aug	Sep	Oct	Nov	Dec	Total
	361	348	437	370	394	301	292	296	262	309	287	311	3968



2002 Probation Referrals	Jan	Feb	Mar	Apr	May	Jun	Jul	Aug	Sep	Oct	Nov	Dec	Total
	308	320	318	305	384	240	286	283	315	333	294	289	3675

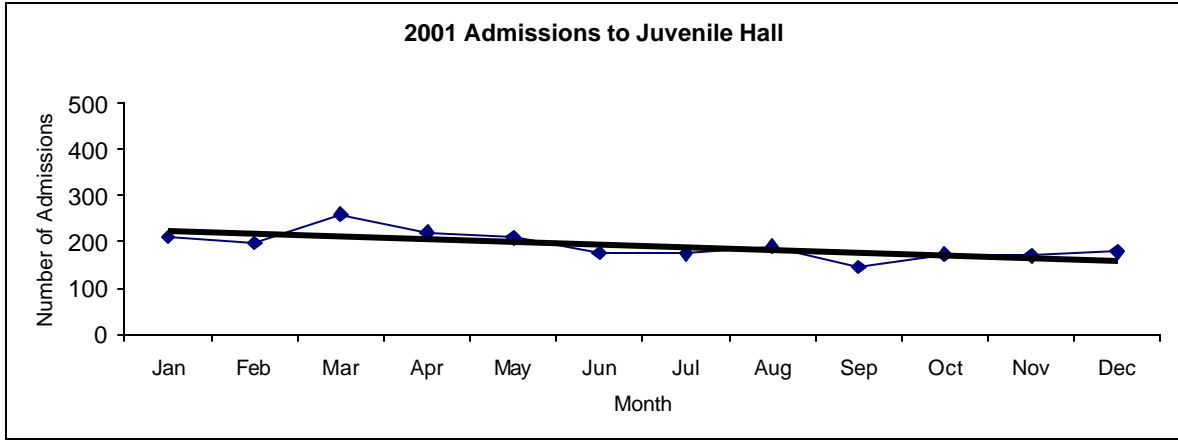


2003 Probation Referrals	Jan	Feb	Mar	Apr	May	Jun	Jul	Aug	Sep	Oct	Nov	Dec	Total
	238	283	320	288	313	248	245	231	261	297	218	243	3185

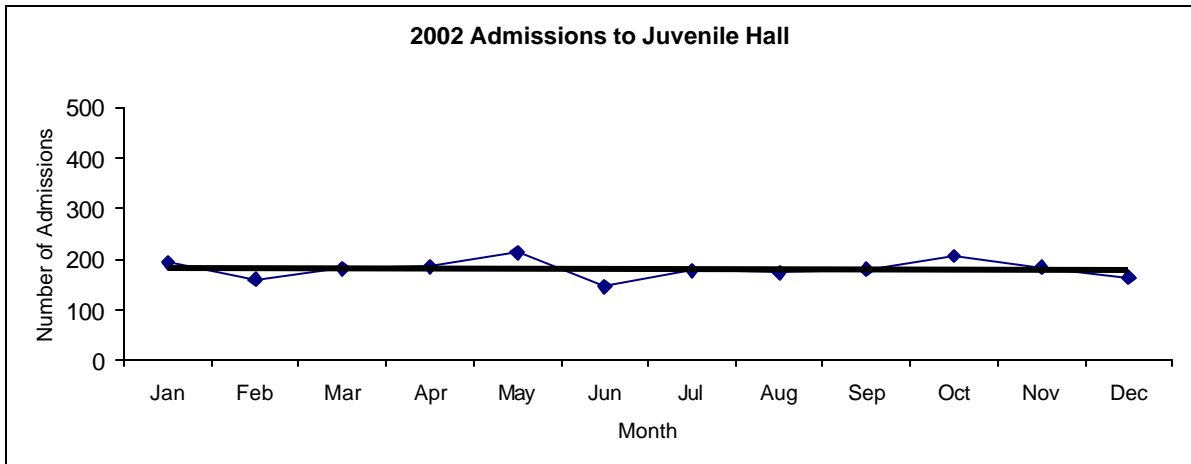


San Francisco Juvenile Probation
Juvenile Hall Admissions By Month
 (Calendar Years 2001-2003)

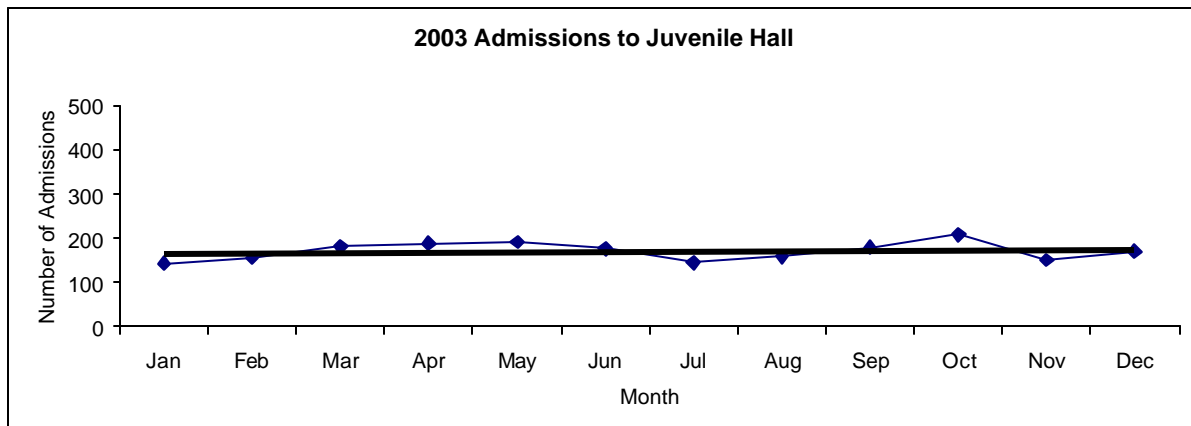
2001 Admissions	Jan	Feb	Mar	Apr	May	Jun	Jul	Aug	Sep	Oct	Nov	Dec	Total
	210	197	260	220	209	176	174	190	145	173	170	178	2302



2002 Admissions	Jan	Feb	Mar	Apr	May	Jun	Jul	Aug	Sep	Oct	Nov	Dec	Total
	193	160	181	185	213	145	177	173	179	206	183	164	2159

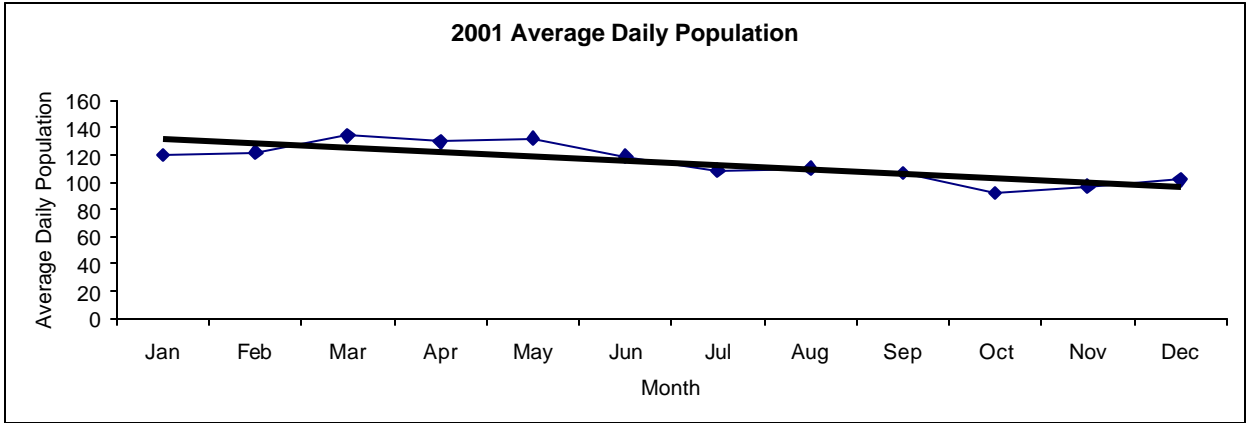


2003 Admissions	Jan	Feb	Mar	Apr	May	Jun	Jul	Aug	Sep	Oct	Nov	Dec	Total
	144	156	181	189	191	176	145	158	179	208	151	170	2048

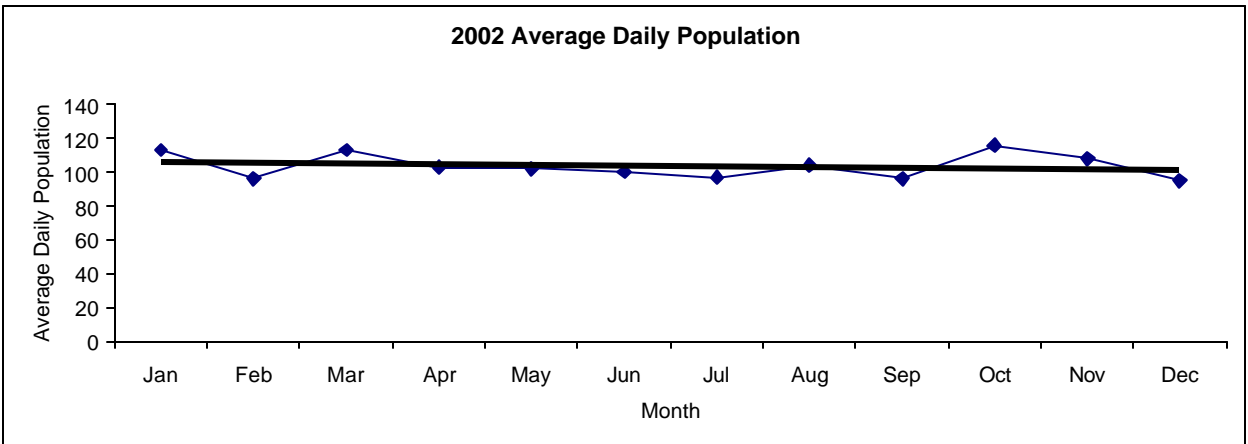


San Francisco Juvenile Probation
Juvenile Hall Average Daily Population By Month
 (Calendar Years 2001-2003)

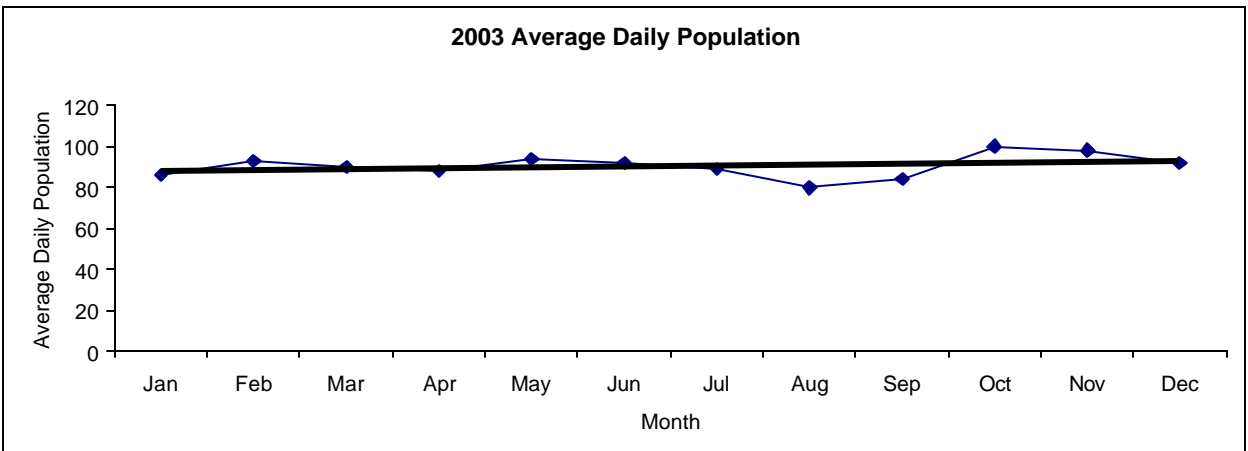
2001 Avg. Daily Pop.	Jan	Feb	Mar	Apr	May	Jun	Jul	Aug	Sep	Oct	Nov	Dec	Total
	120	122	134	130	132	119	109	110	107	92	97	102	115



2002 Avg. Daily Pop.	Jan	Feb	Mar	Apr	May	Jun	Jul	Aug	Sep	Oct	Nov	Dec	Total
	113	96	113	103	102	100	97	104	96	116	108	95	104

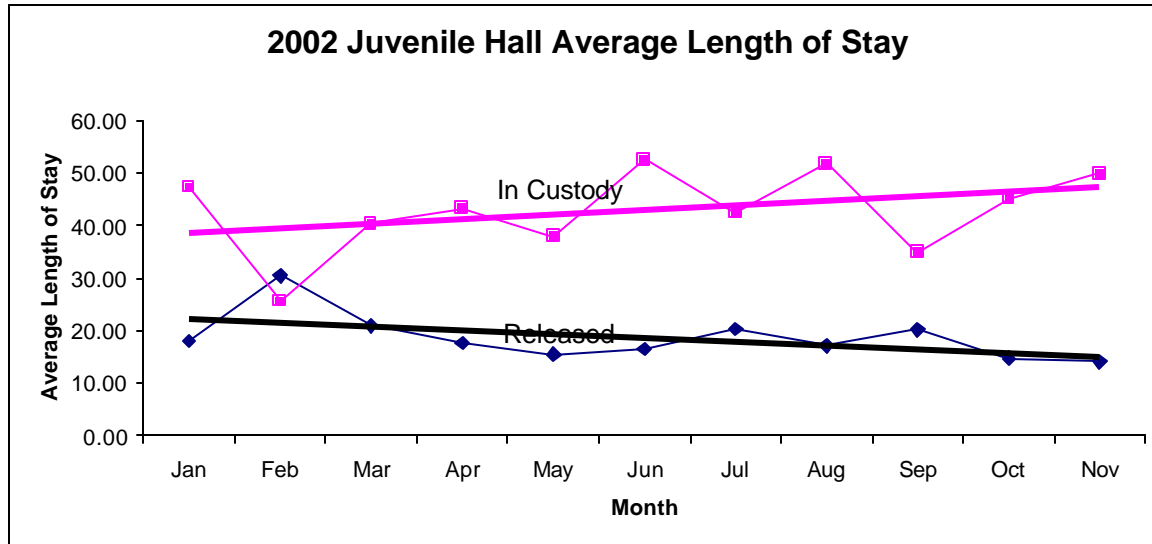


2003 Avg. Daily Pop.	Jan	Feb	Mar	Apr	May	Jun	Jul	Aug	Sep	Oct	Nov	Dec	Total
	86	93	90	88	94	92	89	80	84	100	98	92	91

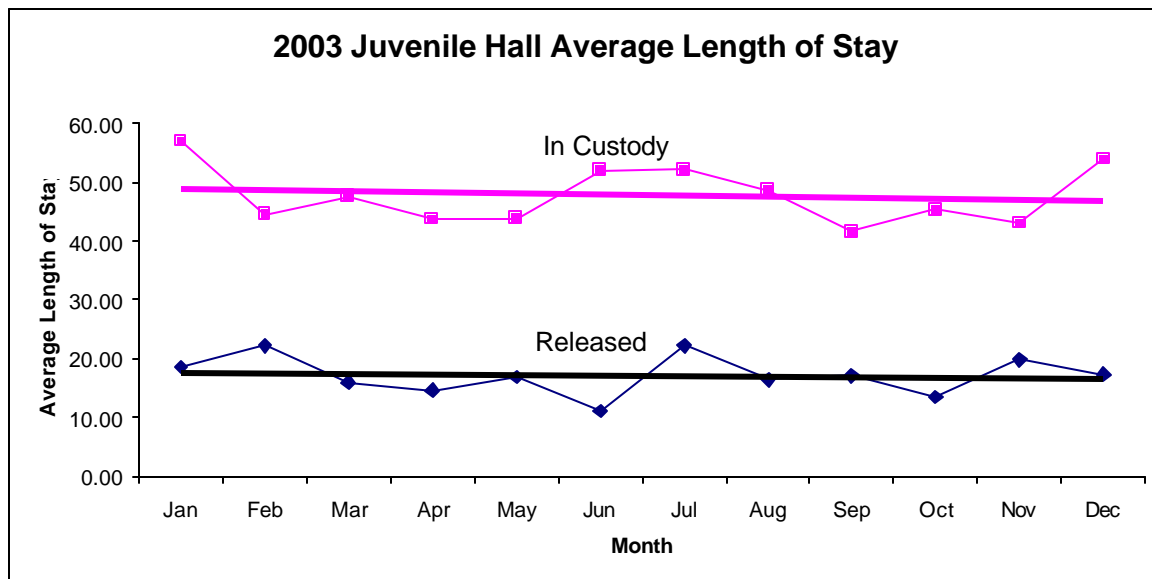


San Francisco Juvenile Probation
Juvenile Hall Average Length of Stay By Month
 (Calendar Years 2002-2003)

2002 Avg. Length of Stay	Jan	Feb	Mar	Apr	May	Jun	Jul	Aug	Sep	Oct	Nov	Dec	Total
¹ Released	18.05	30.44	20.88	17.65	15.50	16.45	20.22	17.15	20.16	14.67	14.03	18.30	18.63
² In Custody	47.30	25.63	40.35	43.29	37.86	52.57	42.41	51.77	34.82	45.11	49.85	58.85	44.15



2003 Avg. Length of Stay	Jan	Feb	Mar	Apr	May	Jun	Jul	Aug	Sep	Oct	Nov	Dec	Total
¹ Released	18.58	22.16	15.97	14.65	16.86	11.07	22.21	16.41	17.13	13.51	19.87	17.30	17.14
² In Custody	56.97	44.53	47.63	43.78	43.80	51.98	52.13	48.67	41.61	45.30	43.04	53.96	47.78



Notes: Less than one day of stay is calculated as one day.

¹ Length of stay is calculated according to release date for those who are released.

² For those still in custody, length of stay is calculated at the last day of the month.