

City and County of San Francisco



Juvenile Probation Department

Monthly Report for July 2004

Presented to the Juvenile Probation Commission

August 25th, 2004

Table of Contents

Section I Summary Reports

Juvenile Hall, Log Cabin Ranch Summary Statistics.....	1
Community Programs Summary Statistics	2
Probation Services Summary Statistics.....	4

Section II Current Month General Detail

Probation Referrals, Juvenile Admissions And Average Daily Population	6
Juvenile Hall Admissions and Average Daily Population.....	7
Commitments to out-of-home placement.....	8
Commitments to California Youth Authority.....	9
Log Cabin Ranch Admissions and Average Daily Population.....	10
Probation Referrals	11
Juvenile Hall And Log Cabin Ranch Incident Report	12
Juvenile Hall And Log Cabin Ranch Grievances Report.....	13
Bay Area Resident Juvenile Hall Comparison	14
Juvenile Hall Admissions.....	15
Juvenile Hall Detainees by Detention Reason.....	16
Juvenile Hall Average Daily Population by Rated Capacity.....	17
Juvenile Hall Average Length of Stay	18

Section III Demographics

Juvenile Hall Detainees by Sex and Race/Ethnic Origin.....	19
Juvenile Hall Detainees by Age	20
Juvenile Hall Detainees by Age and Sex.....	21
Juvenile Hall Detainees by Geographic Residence of Youth.....	22
Juvenile Hall Detainees by Race/Ethnic Origin and Sex.....	23

Section IV

Historical Information

2001-2003 Probation Referrals	24
2002-2003 Juvenile Hall Admissions	25
2002-2003 Juvenile Hall Average Daily Population.....	26
2002-2003 Juvenile Hall Average Length of Stay by Month.....	27



Section I

Summary Reports

Summary Report for the Month of July 2004

Juvenile Hall	<i>June 2003</i>	<i>June 2004</i>	<i>July 2003</i>	<i>July 2004</i>	<i>YTD 2003</i>	<i>YTD 2004</i>
Admissions	178	145	150	137	1189	1166
Average Daily Population	92	101	89	94	90	99
Average Length of Stay (Releases)	11.07	18.24	22.21	27.41	17.36	16.62
Average Length of Stay (In Custody)	51.98	64.15	52.13	62.37	48.69	58.13
Releases	177	142	155	251	1194	1155
Log Cabin Ranch						
Admissions:						
First Time Commitments	0	3	6	3	16	16
Recommitments	0	0	0	0	1	0
<i>Total</i>	0	3	6	3	17	16
Releases:						
Graduated	2	3	3	2	18	17
Escape	0	0	0	0	0	0
Other releases	1	1	2	0	10	2
<i>Total</i>	3	4	5	2	28	19
Average Daily Population	22	13	20	16	24	17
Grievances Filed						
Juvenile Hall:						
B1	1	0	0	*	4	3
B2	0	0	0	*	0	8
B3	0	0	0	*	0	1
B4	0	0	0	*	13	1
B5	0	3	0	*	5	5
G2 (CO-ED)	0	0	0	*	3	2
<i>Total</i>	0	3	0	*	25	20
Log Cabin Ranch	0	0	0	0	0	0
Incident Reports						
Juvenile Hall	16	11	16	6	96	86
Log Cabin Ranch	2	3	0	5	8	10
<i>Total</i>	18	14	16	11	104	96

*IT did not receive the grievances report for the month of July 2004.

Summary Report for the Month of July 2004

Community Programs	<i>Program Vacancies by Agency on July 2004</i>	<i>Active in program June 2003</i>	<i>Active in Program June 2004</i>	<i>Active in Program July 2003</i>	<i>Active in Program July 2004</i>
IHBS Monthly Client Count					
BayView Hunters Point Foundation	13	16	13	16	13
Chinatown Youth Center	0	10	13	10	13
Morrisania West, Inc.	0	11	12	11	12
Office of Samoan Affairs	2	9	9	9	9
Potrero Hill Neighborhood House	4	11	7	11	7
Instituto Familiar de La Raza	10	22	22	22	22
Vietnamese Youth Development Center	4	5	7	5	7
Brothers Against Guns	3	0	11	0	11
<i>Total</i>	36	84	94	84	94
<i>July 2004 Percent Program Utilization</i>	73%				
<i>July 2004 Percent Change from last report</i>	0%				

Summary Report for TANF and Girls Programs
*Month: May 2004

*IT did not receive the June Report

PROGRAM	ANNUAL GOAL	NUMBER SERVED
California Community Dispute Services: Youth Accountability Boards	40	54
CARECEN: Tattoo Removal and Case Management	45	55
Center for Young Women's Development: Girls Services	40	140
Community Works – Girls Diversion Program	24	14
Community Works – Girls Therapeutic Arts Curriculum in Juvenile Hall	100	92
Community Works – ROOTS Support for Children of Incarcerated Parents	40	38
Edgewood Kinship Support Network	30	26
Family Restoration House: Life Skills	30	32
Girls 2000: Girls Services and Family Support Services	20	22
Instituto Familiar de la Raza – Case Management	10	9
Mission Neighborhood Center: Young Queens on the Rise – Girls Services	35	37
Performing Arts Workshop: Arts Education at Impact High School	30	36
SAGE: Girls Services	35	52
Samoan Community Development Center: Anger Management	75	165
Special Services for Groups – Occupational Therapy Training Program	50	72
United Way/Girls Justice Initiative: Detention-based Case Management & Inside Mentoring Program	300 72	228 100
Urban Services YMCA: Bayview Beacon Truancy Support	50	16
YGCIC GED & Focus Vocational Programs	105	43
YWCA – CITS and FITS Girls Mentorship	64	65

Summary Report for the Month of July 2004

Probation Services	<i>June 2004</i>	<i>July 2004</i>	<i>Year To Date 2004</i>
Probation Referrals	216	251	1856
Petitions	98	80	677
Selected Court Dispositions:			
California Youth Authority	3	2	8
Log Cabin Ranch	3	2	13
Out of Home Placement	11	18	110
Other Probation	28	35	207
Violation of Probation Petitions Filed	21	17	111
California Youth Authority Monthly Count			
Institutions:			
Males	42	42	
Females	5	3	
Total	47	45	
Parole:			
Males	23	26	
Females	1	2	
Total	24	28	

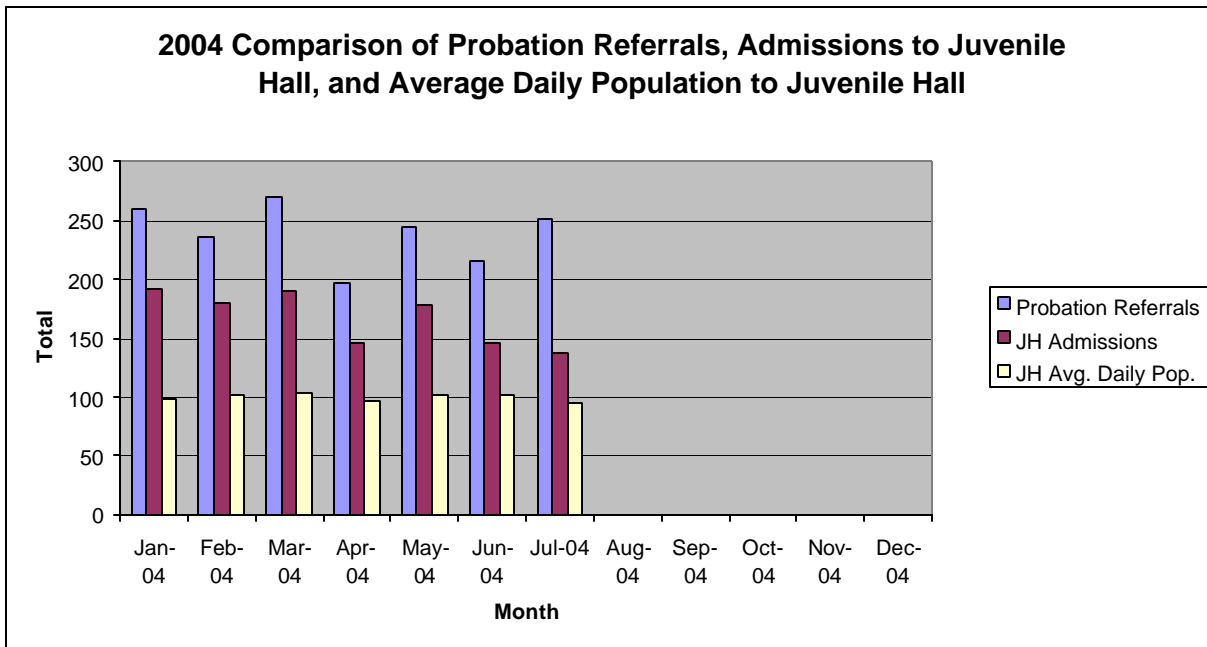
Summary Report for the Month of July 2004

Probation Services			
Caseload List	June 2004	July 2004	July Average # Youth by PO
South Intake	226	223	44
North Intake	232	206	34
Prevention Diversion	173	181	20
Serious Offenders	102	100	16
Supervision	169	181	22
County Placement	20	22	22
Private Placement	193	189	17
Drug Court	23	24	24
Family Integrated Treatment Services	119	115	14
<i>Total</i>	1257	1241	23
Special Services Unit	New	Closed	Active at end of Month
Record Sealings	6	4	142
Stepparent Adoptions	1	1	54
Terminations	2	0	13
Marriage Consents	0	1	1
Custody Evaluations	0	0	0
	Entered	Completed	Active at end of Month
Community Service	6	8	1180
		Referred	Completed at end of Month
COPS		7	4
Street Law (Still in session)		10	10
Theft Awareness		41	31
Anger Management for boys (next class 9/8/04)		0	0
Anger Management for girls (next class 9/7/04)		0	0
Life Management Skills		3	3
Kids Turn Non-Violent Family Skills		12	6
Information, Record Checks, Research & Photo Copying Juvenile Records For:	June 2004	July 2004	Year to Date 2004
Job Corps, Probation Departments,			
Military, Law Enforcement,			
Misc., (letters, Memos, Forms, etc.)	128	143	913

Section II
Current Month
General Detail

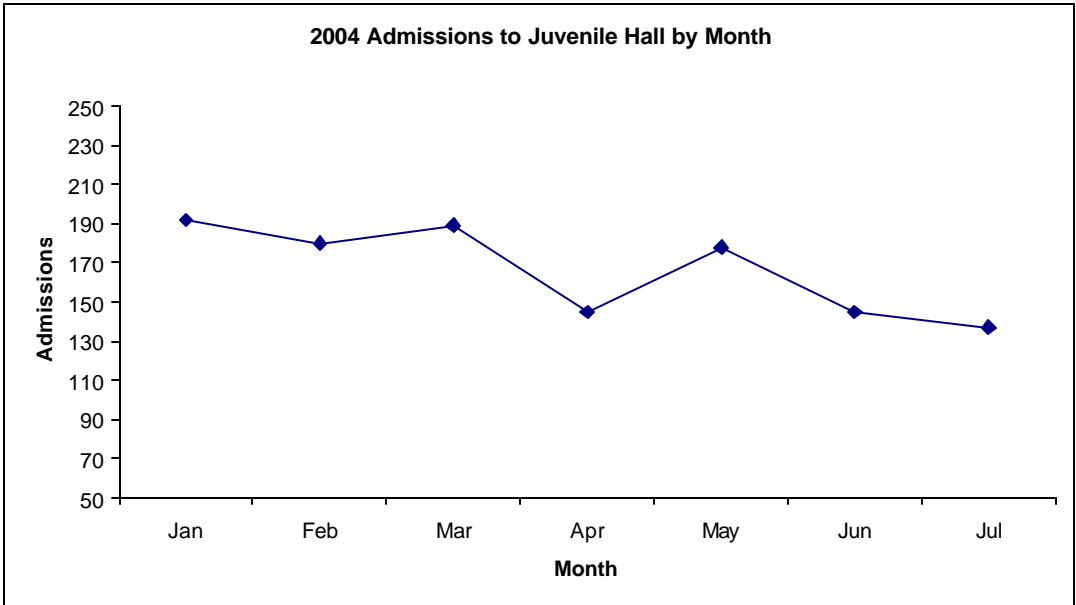
San Francisco Juvenile Probation

	Jan-04	Feb-04	Mar-04	Apr-04	May-04	Jun-04	Jul-04	Aug-04	Sep-04	Oct-04	Nov-04	Dec-04
Probation Referrals	259	236	270	197	245	216	251					
JH Admissions	192	180	189	145	178	145	137					
JH Avg. Daily Pop.	98	101	103	96	101	101	94					

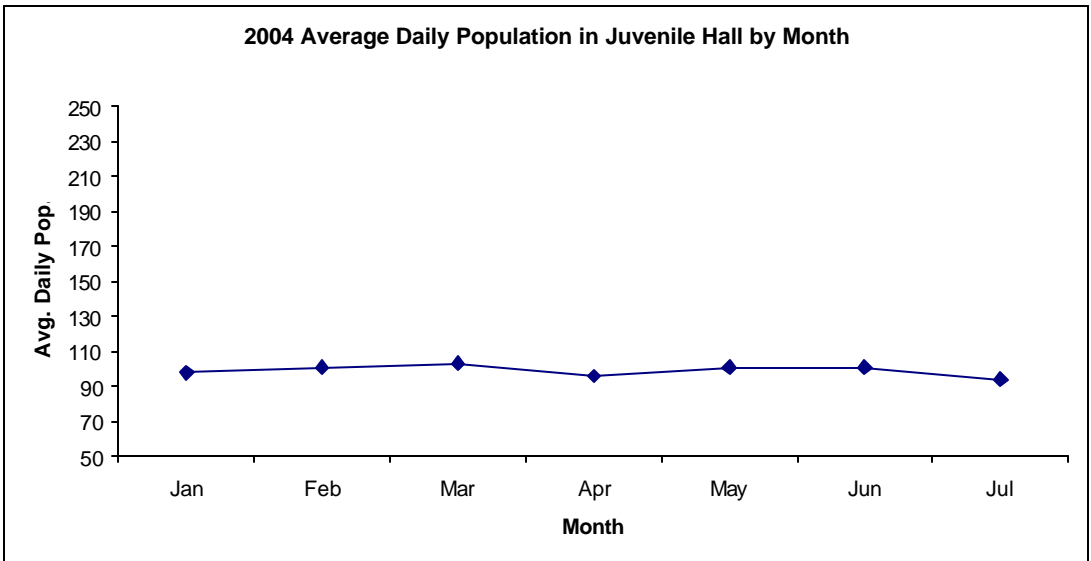


San Francisco Juvenile Probation Admissions and Average Daily Population In Juvenile Hall (Calendar Year 2004)

Admissions	Jan	Feb	Mar	Apr	May	Jun	Jul	Aug	Sep	Oct	Nov	Dec	Total
2004	192	180	189	145	178	145	137						1166



Avg. Daily Pop.	Jan	Feb	Mar	Apr	May	Jun	Jul	Aug	Sep	Oct	Nov	Dec	Total
2004	98	101	103	96	101	101	94						99

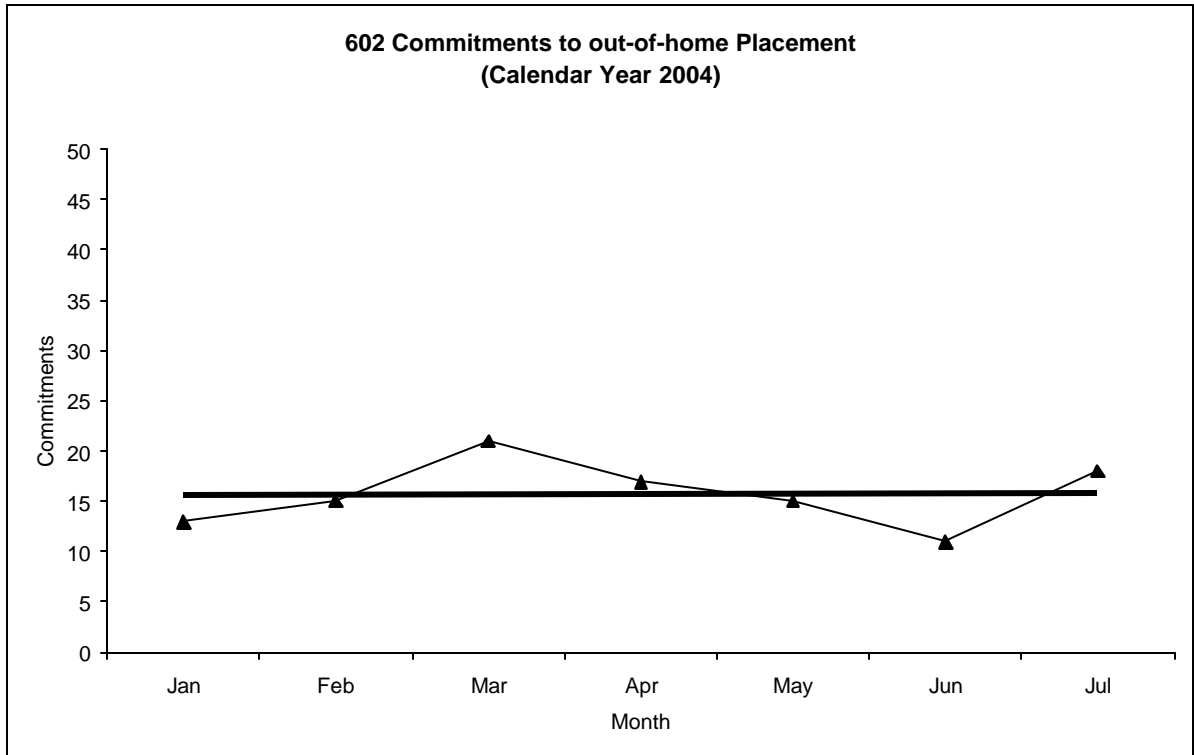


Out-of-Home Placement¹

Commitments of 602's

Calendar Year 2004

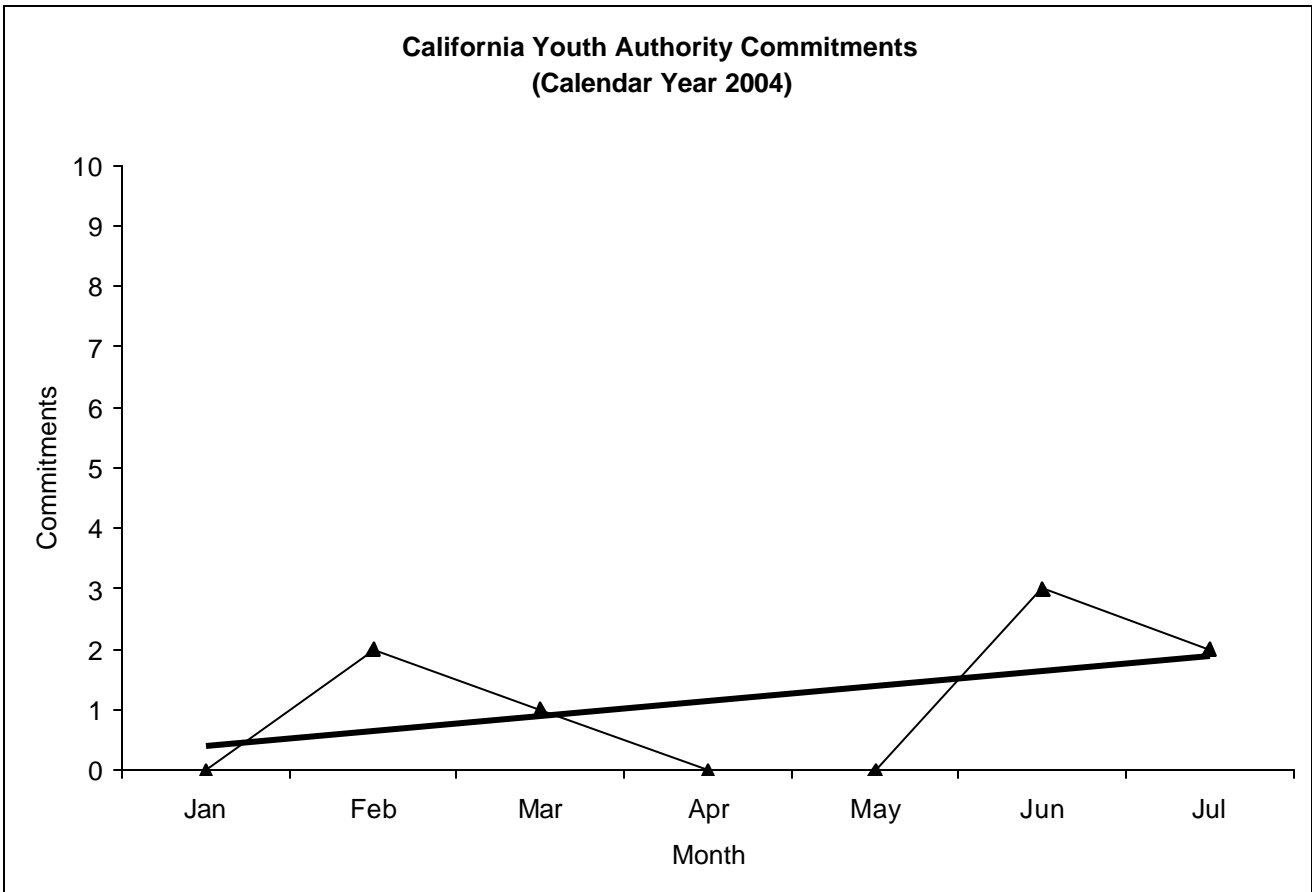
Commitments	Jan	Feb	Mar	Apr	May	Jun	Jul	Aug	Sep	Oct	Nov	Dec	Total
2004	13	15	21	17	15	11	18						110



¹ This report is based on 602 Commitments to out-of-home placements. If there is a 601 commitment, it will show as a footnote here. Figures are regularly updated to include reports from previous reporting periods.

California Youth Authority Commitments (Calendar Year 2004)

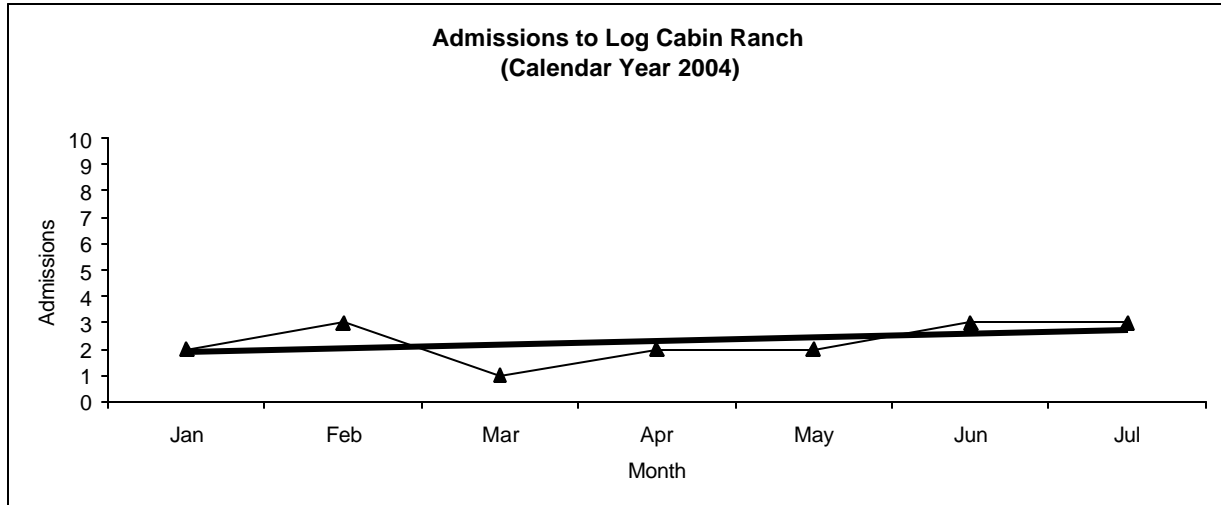
Commitments	Jan	Feb	Mar	Apr	May	Jun	Jul	Aug	Sep	Oct	Nov	Dec	Total
2004	0	2	1	0	0	3	2						8



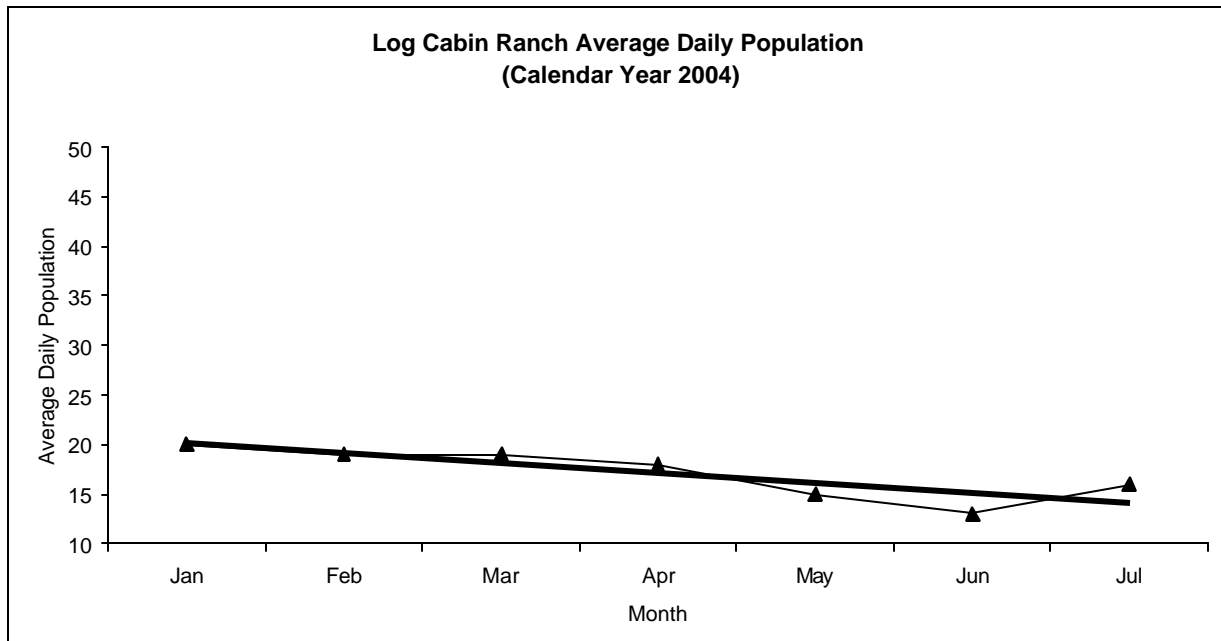
Log Cabin Ranch

Admissions and Average Daily Population (Calendar Year 2004)

Admissions	Jan	Feb	Mar	Apr	May	Jun	Jul	Aug	Sep	Oct	Nov	Dec	Total
2004	2	3	1	2	2	3	3						16



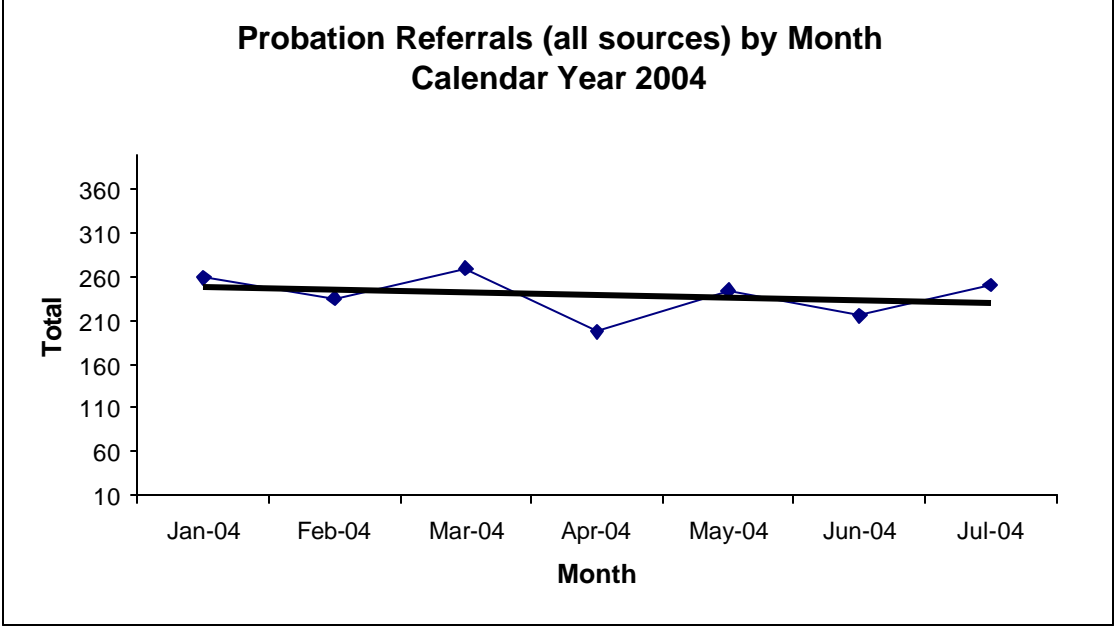
Avg. Daily Pop.	Jan	Feb	Mar	Apr	May	Jun	Jul	Aug	Sep	Oct	Nov	Dec	Total
2004	20	19	19	18	15	13	16						17.14



Probation Referrals by Month Calendar Year 2004

Probation Referrals (all sources) by Month (602 W&I)

Jan-04	259
Feb-04	236
Mar-04	270
Apr-04	197
May-04	245
Jun-04	216
Jul-04	251
Aug-04	
Sep-04	
Oct-04	
Nov-04	
Dec-04	



SAN FRANCISCO JUVENILE PROBATION DEPARTMENT
 MONTHLY INCIDENT REPORT FORM
 MONTH/YEAR: JULY 2004

Log Cabin Ranch	Battery on Staff	Injury to Staff due to Restraint of Minor	Fight	Battery Youth on Youth	Attempted Escape	AWOL	Attempted Suicide	Serious Contraband (Weapon Illegal Drug)
	0	0	3	0	0	0	0	1
	Battery on Staff with Injury	Fire	Fight with Injury	Battery Youth on Youth with Injury	Escape	Death	Suicide	Major Property Destruction
0	1	0	0	0	0	0	0	0
Juvenile Hall	Battery on Staff	Injury to Staff due to Restraint of Minor	Fight	Battery Youth on Youth	Attempted Escape	AWOL	Attempted Suicide	Serious Contraband (Weapon Illegal Drug)
	0	0	2	1	0	0	2	0
	Battery on Staff with Injury	Fire	Fight with Injury	Battery Youth on Youth with Injury	Escape	Death	Suicide	Major Property Destruction
0	0	1	0	0	0	0	0	0

Grievances Filed July 2004

San Francisco Juvenile Probation Department

Juvenile Hall

*IT did not receive the grievances report for the month of July 2004.

Grievance Documents:



**Grievances Filed July 2004
San Francisco Probation Department
From the office of the Ombudsman.**

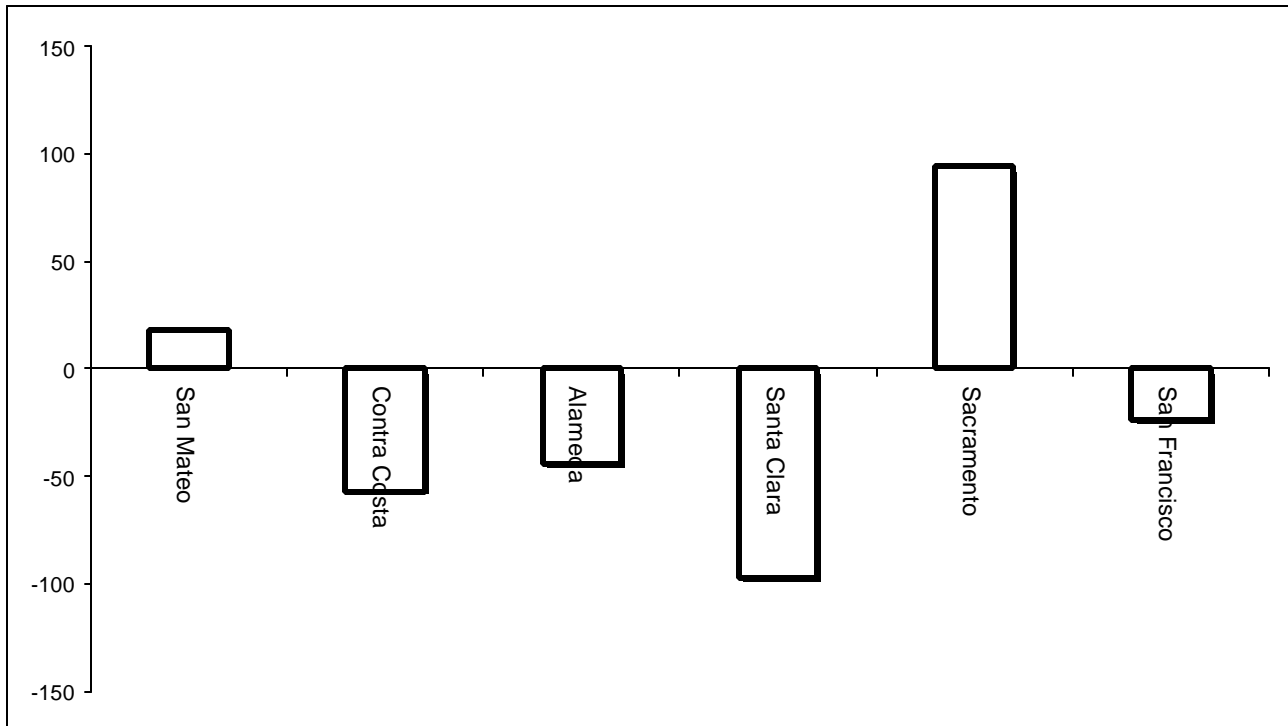
<i>Area of Infraction</i>	<i>Title 15 Article/Section</i>	<i>B1</i>	<i>Coed</i>	<i>B2</i>	<i>B3</i>	<i>B4</i>	<i>B5</i>	<i>TOTAL</i>
Religious Program	6.1372	*		*	*	*	*	*
Total		*	closed	*	*	*	*	*

Log Cabin Ranch

Type	Log Cabin Ranch
Food/Snacks	0
Laundry	0
Personal Property	0
Phone Calls	0
Procedures	0
Head Call	0
Discipline	0
Complaints vs. Staff	0
Cottage Change	0
Medical	0
School	0
Probation	0
Miscellaneous	0
Total	0

Bay Area Resident Juvenile Hall Comparison Over/Under Capacity

on August 20th, 2004

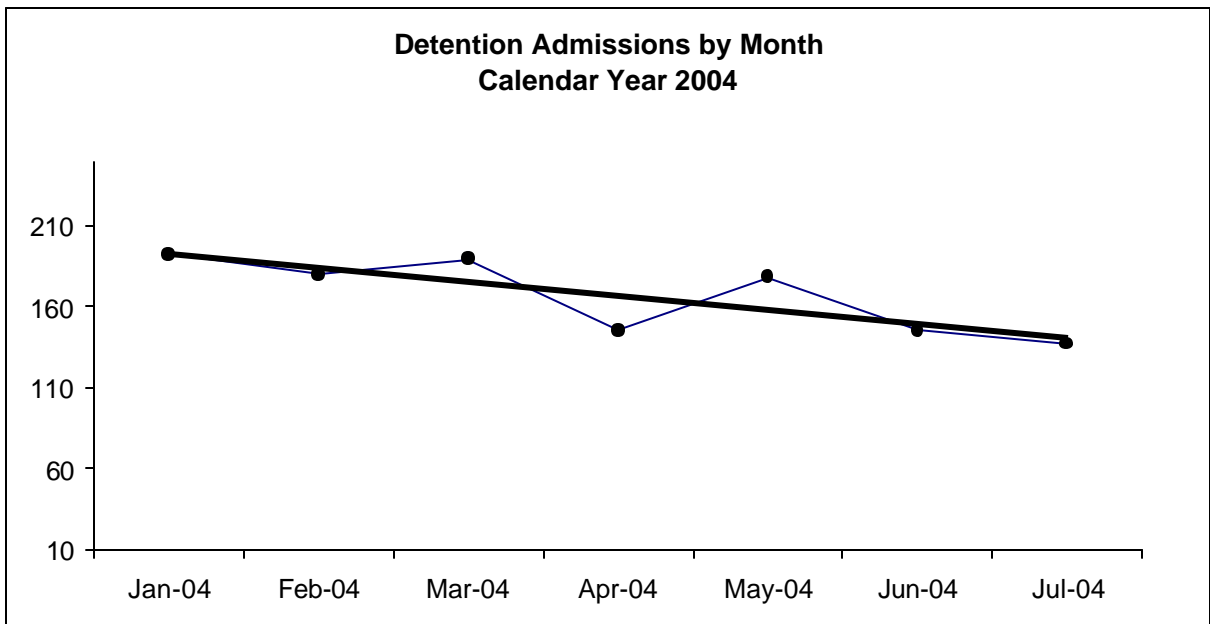


	Rated Capacity	Actual	Over/Under Capacity
San Mateo	130	148	18
Contra Costa	160	103	-57
Alameda	288	244	-44
Santa Clara	329	232	-97
Sacramento	256	380	94
San Francisco	104	80	-24

Juvenile Hall Admissions by Month Calendar Year 2004

Detention Admissions by Month

Jan-04	192
Feb-04	180
Mar-04	189
Apr-04	145
May-04	178
Jun-04	145
Jul-04	137
Aug-04	
Sep-04	
Oct-04	
Nov-04	
Dec-04	

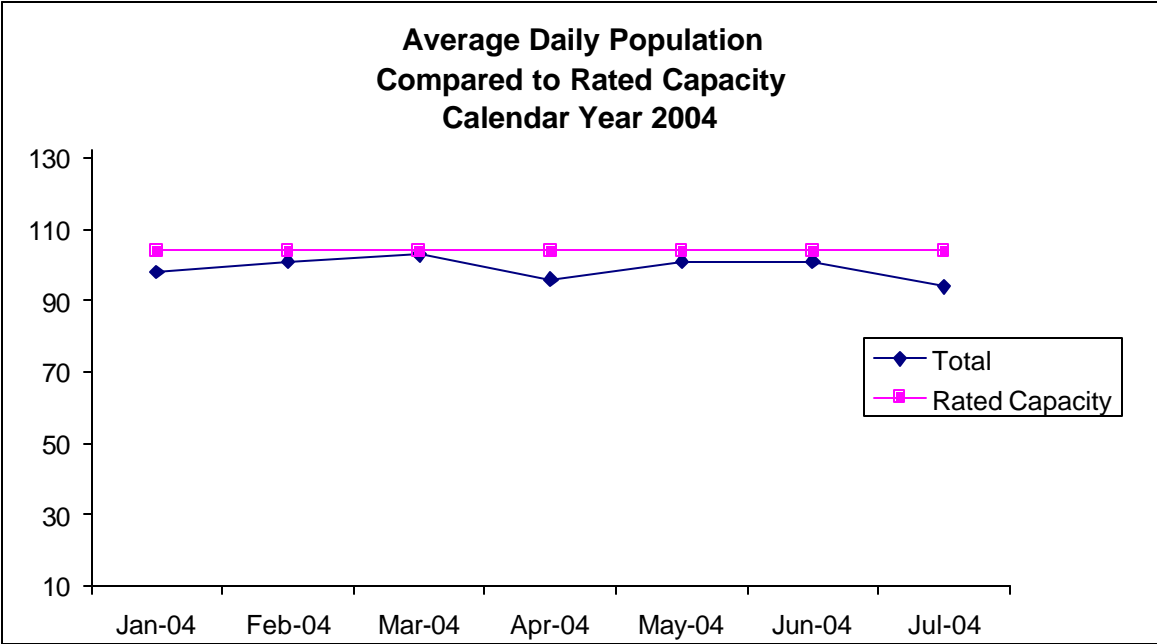


**Characteristics of Juvenile Hall Detainees on July 31st, 2004
Using CJIS Code From the Department of Justice**

Detention Reason	Offense Code	MF	Count	%
MURDER	187 (A) PC	F	1	1.11%
ATTEMPTED MURDER	664 /187 (A) PC	F	6	6.67%
ORAL COPULATION IN CONCERT W/FORCE/ETC	288 A (D)(1) PC	F	4	4.44%
RAPE BY FORCE/FEAR/ETC	261 (A)(2) PC	F	1	1.11%
LEWD OR LASCIVIOUS ACTS W/CHILD UNDER 14 YEARS	288 (A) PC	F	2	2.22%
SEXUAL PENETRATION WITH FORCE/ETC	289 (A)(1) PC	F	1	1.11%
CARJACKING	215 (A) PC	F	2	2.22%
ASSAULT W/DEADLY WEAPON ON TRANSPORTATION PERSONNEL/ETC	245.2 PC	F	1	1.11%
TRANSPORT/SELL NARCOTIC/CONTROLLED SUBSTANCE	11352 (A) HS	F	3	3.33%
POSSESS/PURCHASE COCAINE BASE FOR SALE	11351.5 HS	F	2	2.22%
BURGLARY:FIRST DEGREE	459 PC	F	1	1.11%
ROBBERY:SECOND DEGREE	212.5(C) PC	F	11	12.22%
ASSAULT:DEADLY WEAPON OR FORCE:POSSIBLE GREAT BODILY INJ	245 (A) PC	F	5	5.56%
BATTERY W/SERIOUS BODILY INJURY	243 (D) PC	F	1	1.11%
POSSESS NARCOTIC CONTROLLED SUBSTANCE	11350 (A) HS	F	1	1.11%
POSSESS FIREARM W/ALTERED IDENTIFICATION	12091 PC	F	1	1.11%
CARRY CONCEALED WEAPON IN VEHICLE W/PRIOR FELONY CONVICTION	12025 (A)(1) PC	F	1	1.11%
CARRY CONCEALED WEAPON WHILE ENGAGED IN CRIMINAL STREET GANG	12025 (B) PC	F	1	1.11%
THREATEN CRIME W/INTENT TO TERRORIZE	422 PC	F	2	2.22%
BURGLARY:SECOND DEGREE	459 PC	F	1	1.11%
GRAND THEFT:MONEY/LABOR/PROPERTY OVER \$400	487 (A) PC	F	1	1.11%
GRAND THEFT FROM PERSON	487 (C) PC	F	1	1.11%
TAKE VEHICLE W/O OWNER'S CONSENT/VEHICLE THEFT	10851 (A) VC	F	8	8.89%
POSSESS ANY ASSAULT WEAPON	12280 (B) PC	F	1	1.11%
MINOR ILLEGALLY POSSESS LIVE AMMUNITION W/PRIOR	12101 (B)(1) PC	F	1	1.11%
CRIMINAL CONSPIRACY	182 PC	F	2	2.22%
OBSTRUCT/RESIST/ETC PUBLIC/PEACE OFFICER/EMERGENCY MED TECH	148 (A)(1) PC	M	2	2.22%
CARRY CONCEALED WEAPON IN VEHICLE	12025 (A)(1) PC	M	1	1.11%
FAIL TO OBEY ORDER OF JUVENILE COURT 602 WI	777 (A)(2) WI	M	5	5.56%
CHANGE OF PLACEMENT/PLACEMENT FAILURE	737 WI	M	3	3.33%
VIOLATION(S) OF HOME SUPERVISION CONDITION	628.1 WI	M	1	1.11%
COURT ORDER 602	CTORD 602 XX	X	8	8.89%
BENCH WARRANT	BENCH WARRANT	X	3	3.33%
WARRANT 602	WRNT602 XX	X	5	5.56%
	Total		90	100.00%

**Average Daily Population
By Rated Capacity
Calendar Year 2004**

	Total	Rated Capacity
Jan-04	98	104
Feb-04	101	104
Mar-04	103	104
Apr-04	96	104
May-04	101	104
Jun-04	101	104
Jul-04	94	104
Aug-04		104
Sep-04		104
Oct-04		104
Nov-04		104
Dec-04		104



Juvenile Hall Average Length of Stay

For the Month of July 2004

¹Released

Range of Days	<i>1-10 days</i>	<i>11-20 days</i>	<i>21-30 days</i>	<i>30 or more days</i>	Total
# of Youth Released	87	19	16	26	148
% of Population	71.30%	8.70%	3.80%	16.30%	100%
# of Days	283	275	388	3111	4057
% of Total Days	6.98%	6.78%	9.56%	76.68%	100%
Average Length of Stay	3.25	14.47	24.25	119.65	27.41

²In Custody

Range of Days	<i>1-10 days</i>	<i>11-20 days</i>	<i>21-30 days</i>	<i>30 or more days</i>	Total
# of Youth Detained	24	12	8	46	90
% of Population	38.60%	18.10%	12.60%	30.70%	100%
# of Days	134	156	214	5109	5613
% of Total Days	2.39%	2.78%	3.81%	91.02%	100%
Average Length of Stay	5.58	13.00	26.75	111.07	62.37

Notes: Less than one day of stay is calculated as one day.

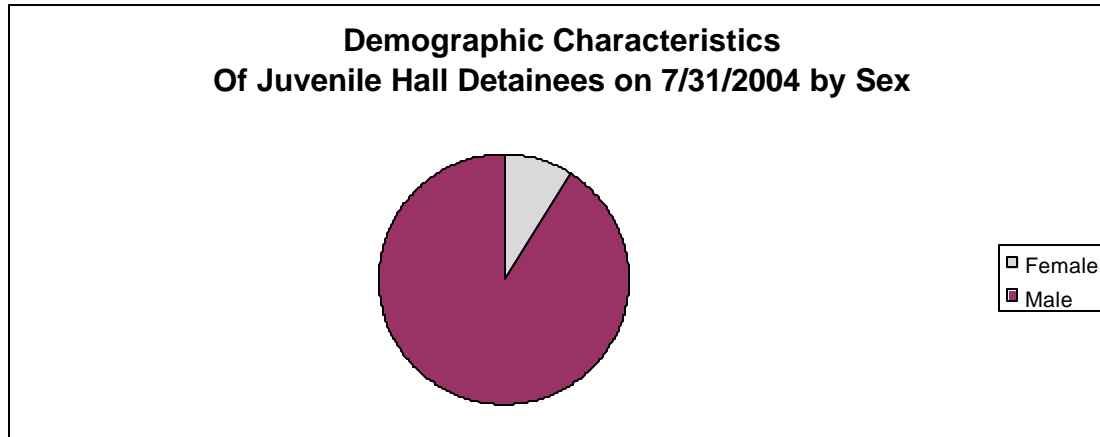
¹Length of stay is calculated according to release date for those who are released.

²For those still in custody, length of stay is calculated at the last day of the month.

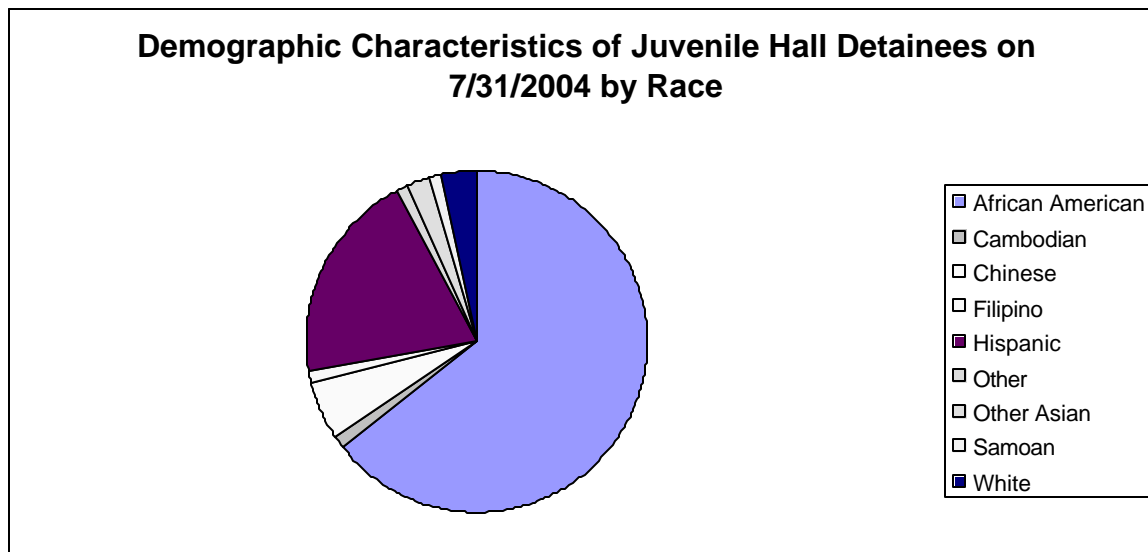
Section III

Demographics

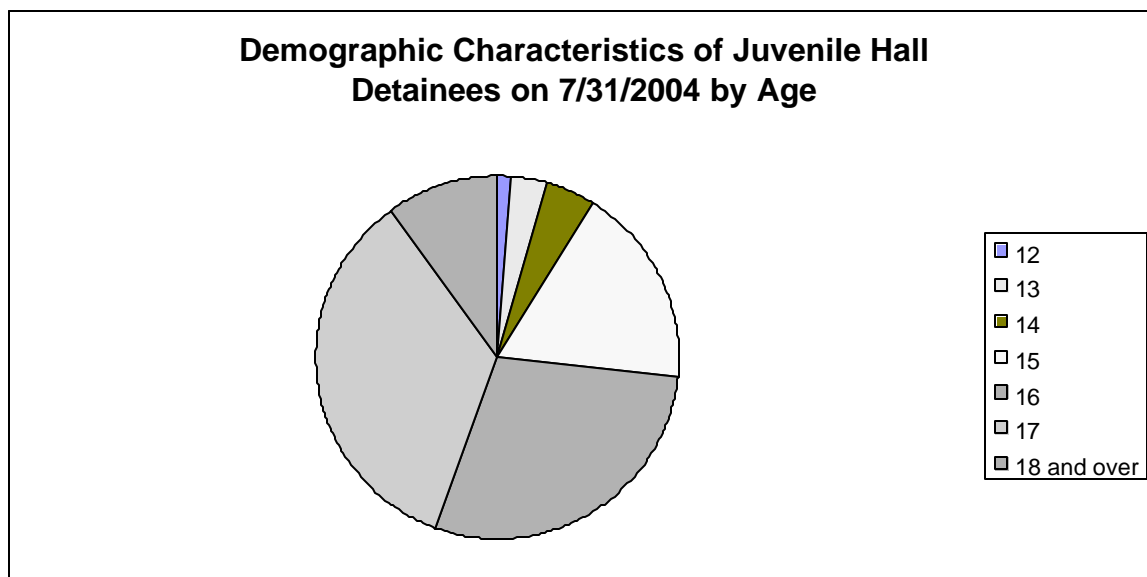
Sex	Frequency	Percent
Female	8	8.89%
Male	82	91.11%
Total	90	100.00%



Race/Ethnic Origin	Frequency	Percent
African American	58	64.44%
Cambodian	1	1.11%
Chinese	5	5.56%
Filipino	1	1.11%
Hispanic	18	20.00%
Other	1	1.11%
Other Asian	2	2.22%
Samoan	1	1.11%
White	3	3.33%
Total	90	100.00%

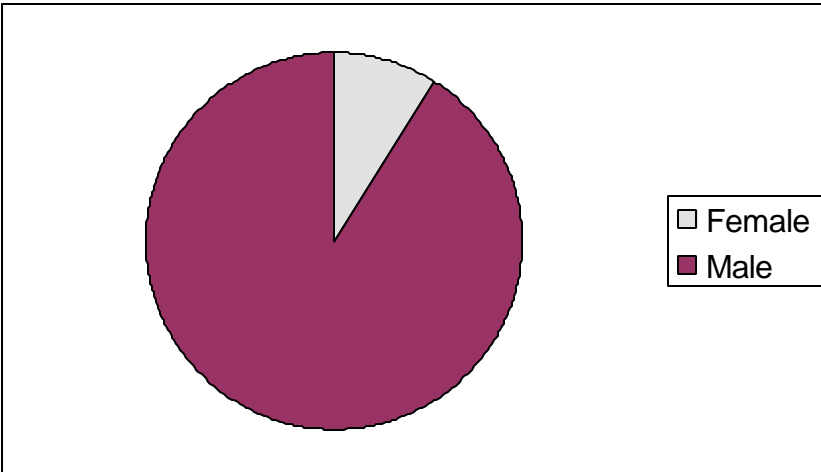


Age	Frequency	Percent
12	1	1.11%
13	3	3.33%
14	4	4.44%
15	16	17.78%
16	26	28.89%
17	31	34.44%
18 and over	9	10.00%
Total	90	100.00%



Demographic Characteristics of Juvenile Hall Detainees
on 7/31/2004
Age by Sex

Age	Female	Male	Total	
12	0	1	1	1.11%
13	0	3	3	3.33%
14	1	3	4	4.44%
15	2	14	16	17.78%
16	2	24	26	28.89%
17	3	28	31	34.44%
18 and over	0	9	9	10.00%
Total	8	82	90	100.00%
	8.89%	91.11%	100.00%	



Demographic Characteristics
Of Juvenile Hall Detainees on July 31st, 2004

Geographic Residence of Youth	Frequency	Percent
Richmond	2	2.2
North of Market/Downtown	1	1.1
Treasure Island/Yerba Buena	1	1.1
Western Addition	11	12.2
Sunset	2	2.2
Haight Ashbury/Castro	1	1.1
Inner Mission	7	7.8
Potrero	3	3.3
Parkside	2	2.2
Ingleside (West of Twin Peaks)	4	4.4
Outer Mission	12	13.3
Bayview	25	27.8
Non-San Francisco and Unavailable*	19	21.1
	-----	-----
Total	90	100.0

*Non-San Francisco and Unavailable	Frequency	Percent
ANZA	1	5.3
DALY CITY	2	10.5
FRESNO	2	10.5
LAKEPORT	1	5.3
OAKLAND	2	10.5
PASO ROBLES	1	5.3
RICHMOND	1	5.3
SAN JOSE	2	10.5
UNAVAILABLE	6	31.6
VALLEJO	1	5.3
	-----	-----
Total	19	100.0

Demographic Characteristics
Of Juvenile Hall Detainees on July 31st, 2004

Race/Ethnic Origin by Sex

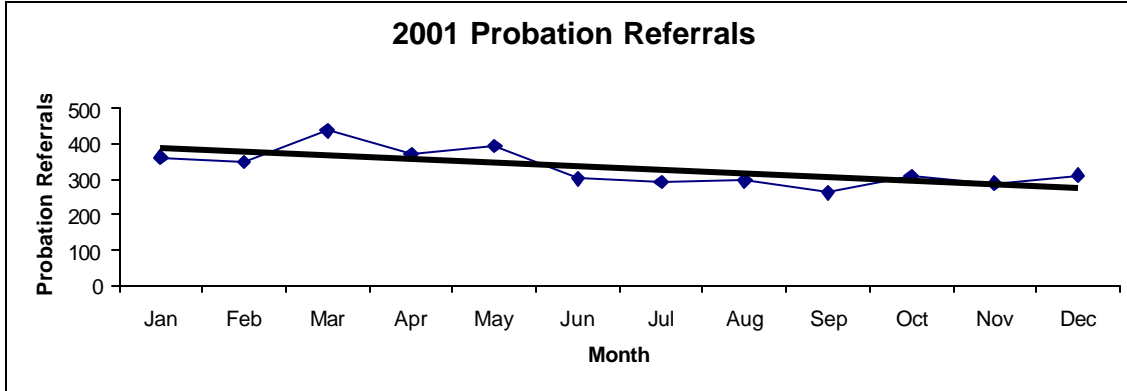
RACE	Count	SEX		Row Total
		Female F	Male M	
OTHER ASIAN			2	2 2.2
AFRICAN AMERICAN	5	53		58 64.4
CHINESE	1	4		5 5.6
CAMBODIAN	1			1 1.1
FILIPINO			1	1 1.1
HISPANIC	1	17		18 20.0
OTHER			1	1 1.1
SAMOAN			1	1 1.1
WHITE			3	3 3.3
Column Total	8 8.9	82 91.1		90 100.0

Section IV

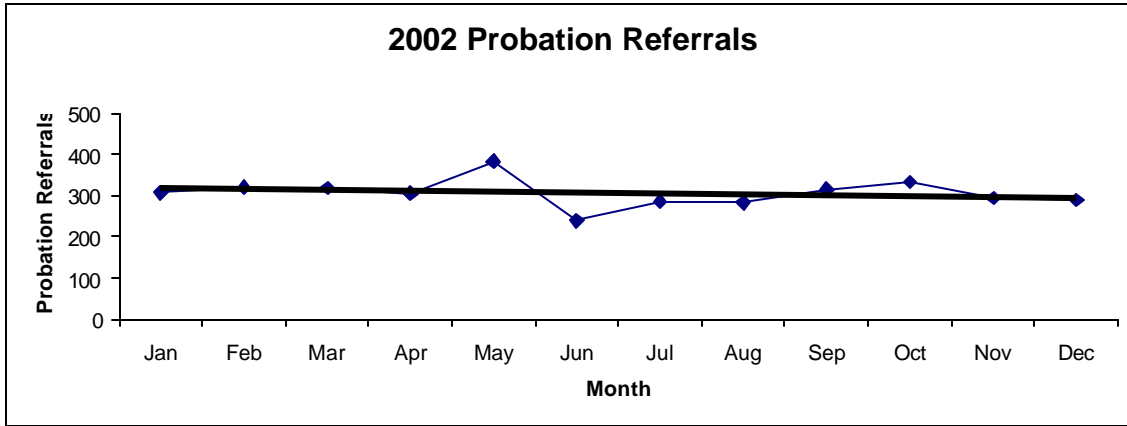
Historical Information

San Francisco Juvenile Probation
Probation Referrals (all sources) By Month
 (2001-2003)

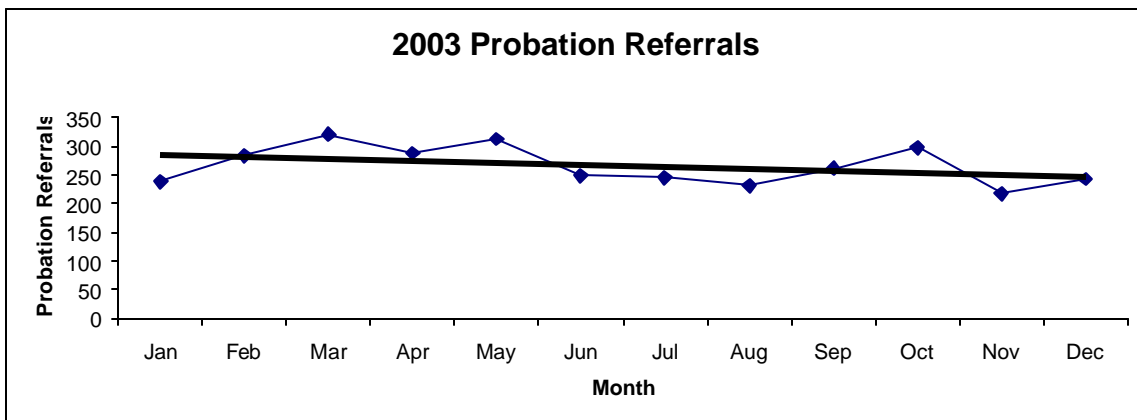
2001 Probation Referrals	Jan	Feb	Mar	Apr	May	Jun	Jul	Aug	Sep	Oct	Nov	Dec	Total
	361	348	437	370	394	301	292	296	262	309	287	311	3968



2002 Probation Referrals	Jan	Feb	Mar	Apr	May	Jun	Jul	Aug	Sep	Oct	Nov	Dec	Total
	308	320	318	305	384	240	286	283	315	333	294	289	3675

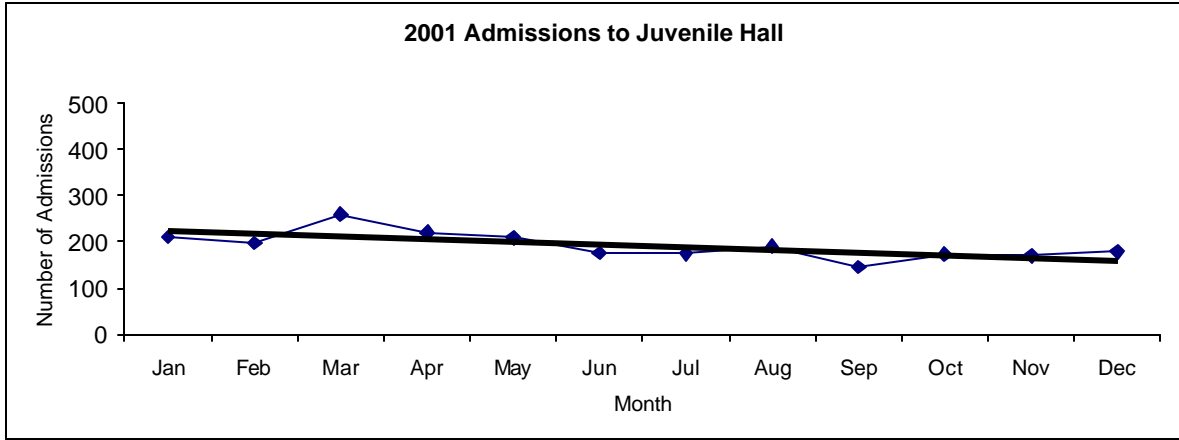


2003 Probation Referrals	Jan	Feb	Mar	Apr	May	Jun	Jul	Aug	Sep	Oct	Nov	Dec	Total
	238	283	320	288	313	248	245	231	261	297	218	243	3185

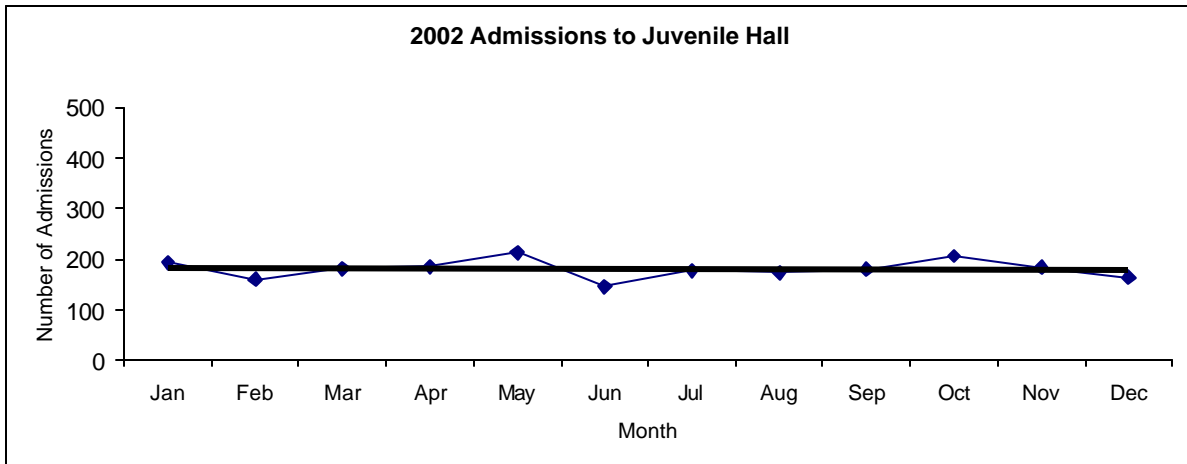


San Francisco Juvenile Probation
Juvenile Hall Admissions By Month
 (Calendar Years 2001-2003)

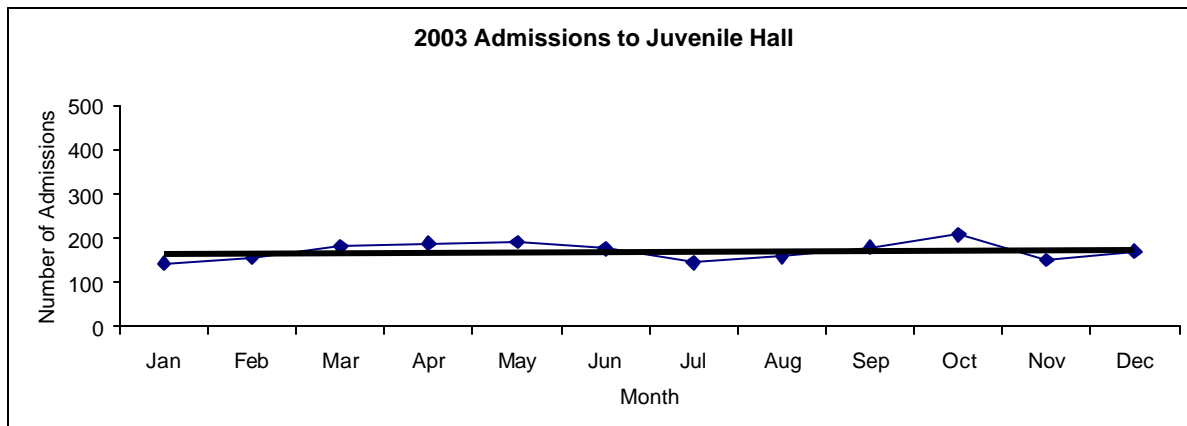
2001 Admissions	Jan	Feb	Mar	Apr	May	Jun	Jul	Aug	Sep	Oct	Nov	Dec	Total
	210	197	260	220	209	176	174	190	145	173	170	178	2302



2002 Admissions	Jan	Feb	Mar	Apr	May	Jun	Jul	Aug	Sep	Oct	Nov	Dec	Total
	193	160	181	185	213	145	177	173	179	206	183	164	2159

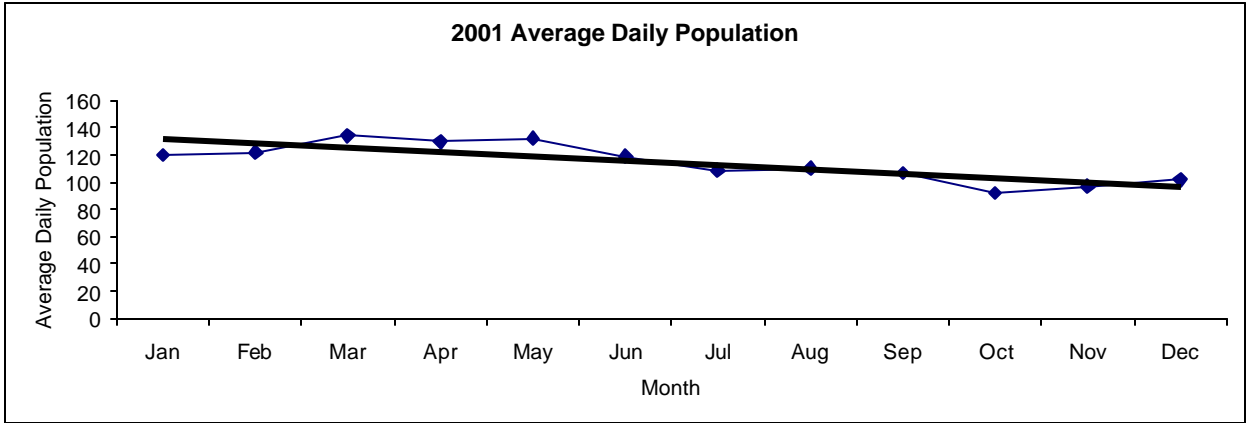


2003 Admissions	Jan	Feb	Mar	Apr	May	Jun	Jul	Aug	Sep	Oct	Nov	Dec	Total
	144	156	181	189	191	176	145	158	179	208	151	170	2048

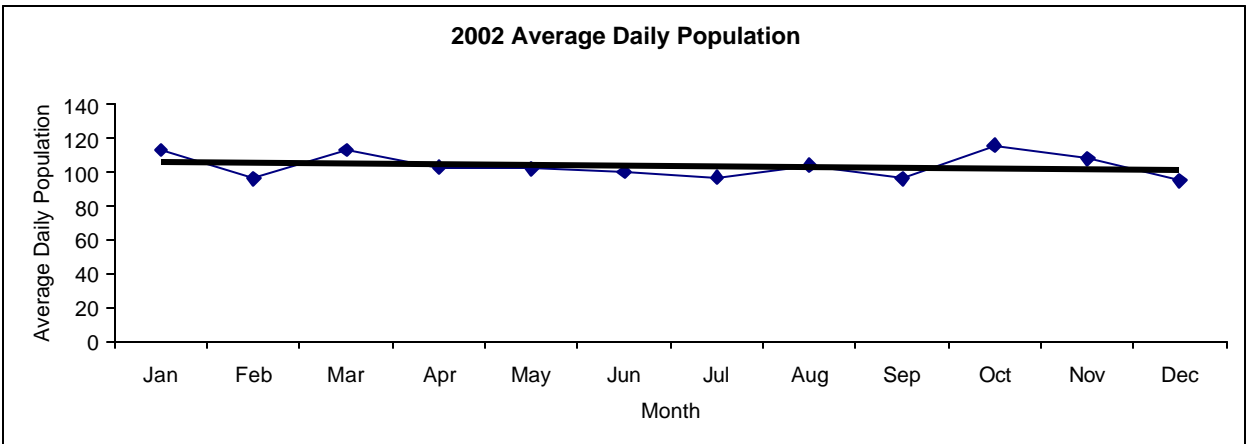


San Francisco Juvenile Probation
Juvenile Hall Average Daily Population By Month
 (Calendar Years 2001-2003)

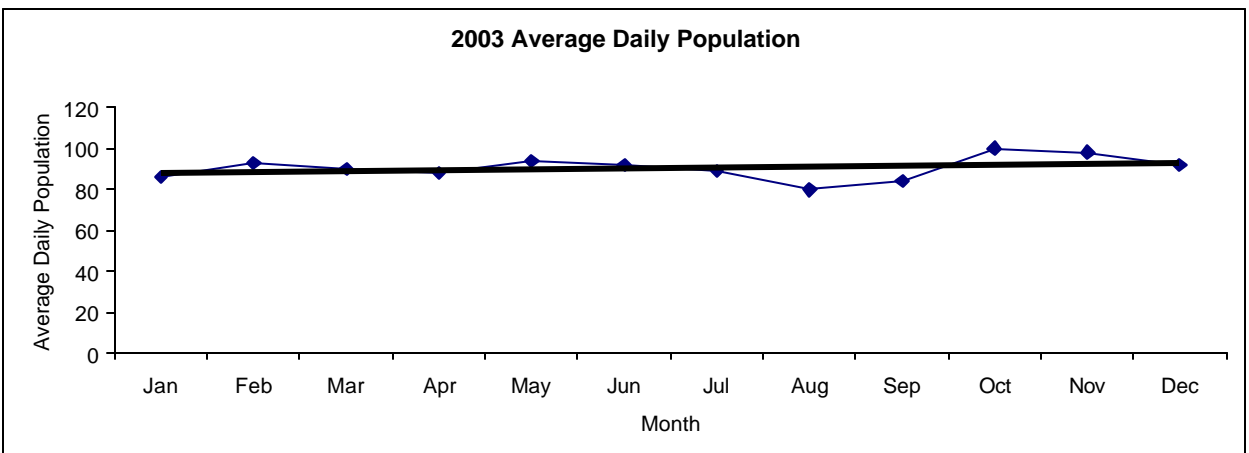
2001 Avg. Daily Pop.	Jan	Feb	Mar	Apr	May	Jun	Jul	Aug	Sep	Oct	Nov	Dec	Total
	120	122	134	130	132	119	109	110	107	92	97	102	115



2002 Avg. Daily Pop.	Jan	Feb	Mar	Apr	May	Jun	Jul	Aug	Sep	Oct	Nov	Dec	Total
	113	96	113	103	102	100	97	104	96	116	108	95	104

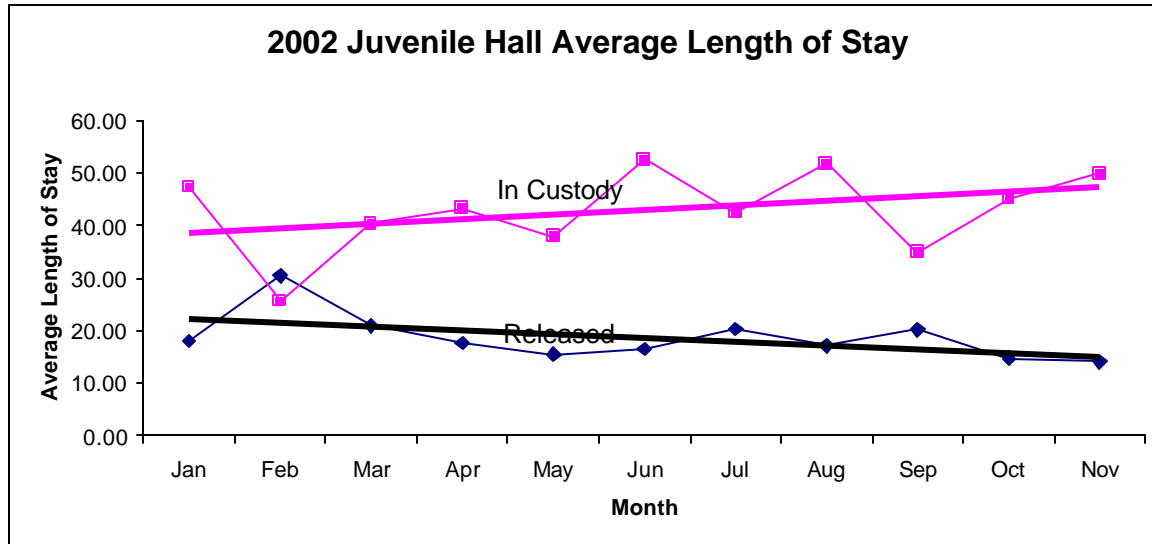


2003 Avg. Daily Pop.	Jan	Feb	Mar	Apr	May	Jun	Jul	Aug	Sep	Oct	Nov	Dec	Total
	86	93	90	88	94	92	89	80	84	100	98	92	91

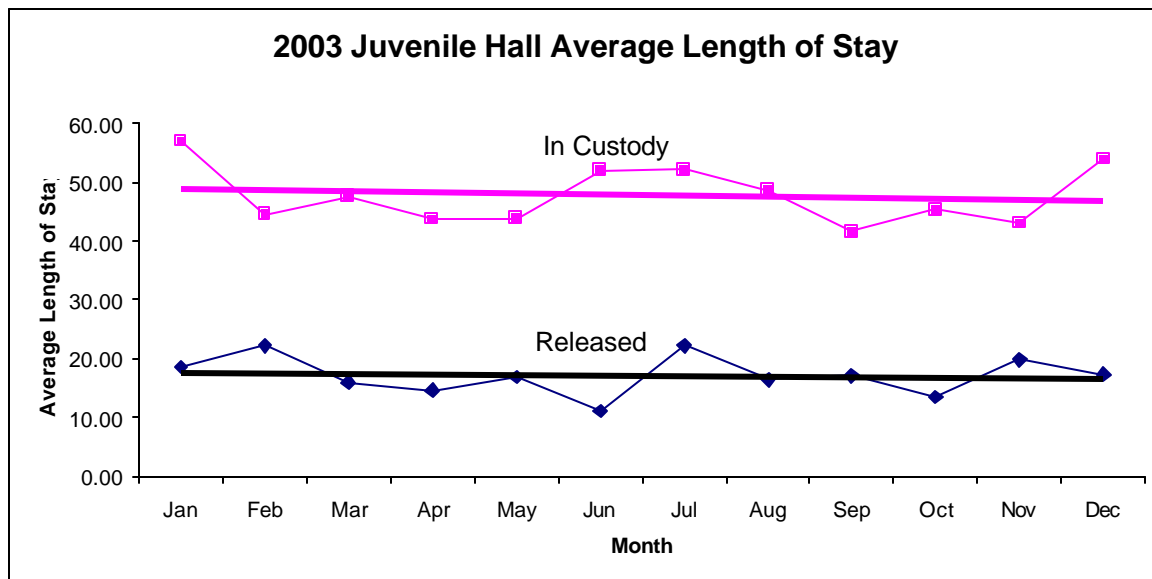


San Francisco Juvenile Probation
Juvenile Hall Average Length of Stay By Month
 (Calendar Years 2002-2003)

2002 Avg. Length of Stay	Jan	Feb	Mar	Apr	May	Jun	Jul	Aug	Sep	Oct	Nov	Dec	Total
¹ Released	18.05	30.44	20.88	17.65	15.50	16.45	20.22	17.15	20.16	14.67	14.03	18.30	18.63
² In Custody	47.30	25.63	40.35	43.29	37.86	52.57	42.41	51.77	34.82	45.11	49.85	58.85	44.15



2003 Avg. Length of Stay	Jan	Feb	Mar	Apr	May	Jun	Jul	Aug	Sep	Oct	Nov	Dec	Total
¹ Released	18.58	22.16	15.97	14.65	16.86	11.07	22.21	16.41	17.13	13.51	19.87	17.30	17.14
² In Custody	56.97	44.53	47.63	43.78	43.80	51.98	52.13	48.67	41.61	45.30	43.04	53.96	47.78



Notes: Less than one day of stay is calculated as one day.

¹ Length of stay is calculated according to release date for those who are released.

² For those still in custody, length of stay is calculated at the last day of the month.