

City and County of San Francisco



Juvenile Probation Department

---

## **Monthly Report for October 2004**

Presented to the Juvenile Probation Commission

November 24<sup>th</sup>, 2004

# Table of Contents

---

## Section I Summary Reports

Juvenile Hall, Log Cabin Ranch Summary Statistics.....	1
Community Programs Summary Statistics .....	2
Probation Services Summary Statistics.....	4

## Section II Current Month General Detail

Probation Referrals, Juvenile Admissions And Average Daily Population .....	6
Juvenile Hall Admissions and Average Daily Population.....	7
Commitments to out-of-home placement.....	8
Commitments to California Youth Authority.....	9
Log Cabin Ranch Admissions and Average Daily Population.....	10
Probation Referrals .....	11
Juvenile Hall And Log Cabin Ranch Incident Report .....	12
Juvenile Hall And Log Cabin Ranch Grievances Report.....	13
Bay Area Resident Juvenile Hall Comparison .....	14
Juvenile Hall Admissions.....	15
Juvenile Hall Detainees by Detention Reason.....	16
Juvenile Hall Average Daily Population by Rated Capacity.....	17
Juvenile Hall Average Length of Stay .....	18

## Section III Demographics

Juvenile Hall Detainees by Sex and Race/Ethnic Origin.....	19
Juvenile Hall Detainees by Age .....	20
Juvenile Hall Detainees by Age and Sex.....	21
Juvenile Hall Detainees by Geographic Residence of Youth.....	22
Juvenile Hall Detainees by Race/Ethnic Origin and Sex.....	23

## **Section IV**

### **Historical Information**

2001-2003 Probation Referrals .....	24
2002-2003 Juvenile Hall Admissions .....	25
2002-2003 Juvenile Hall Average Daily Population.....	26
2002-2003 Juvenile Hall Average Length of Stay by Month.....	27



# **Section I**

# **Summary Reports**

## Summary Report for the Month of October 2004

<b>Juvenile Hall</b>	<i>September 2003</i>	<i>September 2004</i>	<i>October 2003</i>	<i>October 2004</i>	<i>YTD 2003</i>	<i>YTD 2004</i>
Admissions	179	145	209	153	1736	1585
Average Daily Population	84	81	100	86	90	95
Average Length of Stay (Releases)	17.13	22.55	13.51	21.81	16.86	18.02
Average Length of Stay (In Custody)	41.61	60.14	45.3	55.37	47.64	58.98
Releases	174	150	208	149	1733	1587
<b>Log Cabin Ranch</b>						
Admissions:						
First Time Commitments	5	2	0	0	23	19
Recommitments	0	0	0	0	1	0
<i>Total</i>	<b>5</b>	<b>2</b>	<b>0</b>	<b>0</b>	<b>24</b>	<b>19</b>
Releases:						
Graduated	1	1	5	3	25	24
Escape	0	0	0	0	0	0
Other releases	0	2	0	2	10	6
<i>Total</i>	<b>1</b>	<b>3</b>	<b>5</b>	<b>5</b>	<b>35</b>	<b>30</b>
Average Daily Population	25	13	24	12	24	15
<b>Grievances Filed</b>						
Juvenile Hall:						
B1	0	0	0	2	4	5
B2	1	1	0	0	1	16
B3	0	0	0	0	0	1
B4	0	0	0	4	14	7
B5	0	0	0	4	5	14
G2 (CO-ED)	0	0	0	2	3	4
<i>Total</i>	<b>1</b>	<b>1</b>	<b>0</b>	<b>12</b>	<b>27</b>	<b>47</b>
Log Cabin Ranch	<b>0</b>	<b>0</b>				
<b>Incident Reports</b>						
Juvenile Hall	10	5	17	2	133	97
Log Cabin Ranch	2	0	0	0	10	10
<i>Total</i>	<b>12</b>	<b>5</b>	<b>17</b>	<b>2</b>	<b>143</b>	<b>107</b>

## Summary Report for the Month of October 2004

<b>Community Programs</b>	<i>Program Vacancies by Agency on October 2004</i>	<i>Active in program September 2003</i>	<i>Active in Program September 2004</i>	<i>Active in Program October 2003</i>	<i>Active in Program October 2004</i>
<b>IHBS Monthly Client Count</b>					
BayView Hunters Point Foundation	2	16	13	16	13
Chinatown Youth Center	2	10	13	10	13
Morrisania West, Inc.	3	11	12	11	12
Samoan Community Development Center	13	9	0	9	2
Potrero Hill Neighborhood House	6	7	9	7	9
Instituto Familiar de La Raza	8	22	22	22	22
Vietnamese Youth Development Center	0	7	7	7	7
Brothers Against Guns	0	16	30	16	30
<i>Total</i>	<b>34</b>	<b>98</b>	<b>106</b>	<b>98</b>	<b>108</b>
<i>October 2004 Percent Program Utilization</i>	<b>80%</b>				
<i>October 2004 Percent Change from last report</i>	<b>1%</b>				

Summary Report for TANF and Girls Programs  
Month: September 2004

PROGRAM	ANNUAL GOAL	NUMBER SERVED
California Community Dispute Services: Youth Accountability Boards	45	30
CARECEN: Tattoo Removal and Case Management	45	22
Center for Young Women's Development: Girls Services	40	57
Community Works – Girls Diversion Program	24	8
Community Works – Girls Therapeutic Arts Curriculum in Juvenile Hall	100	38
Community Works – ROOTS Support for Children of Incarcerated Parents	40	29
Edgewood Kinship Support Network	30	15
Family Restoration House: Life Skills	30	13
Girls 2000: Girls Services and Family Support Services	20	21
Instituto Familiar de la Raza – Case Management	14	2
Mission Neighborhood Center: Young Queens on the Rise – Girls Services	35	45
Performing Arts Workshop: Arts Education at Impact High School	30	27
SAGE: Girls Services	35	20
Samoan Community Development Center: Anger Management	75	27
Special Services for Groups – Occupational Therapy Training Program	50	47
United Way/Girls Justice Initiative: Detention-based Case Management & Inside Mentoring Program	300 72	43 24
Urban Services YMCA: Bayview Beacon Truancy Support	50	14
YGCIC GED & Focus Vocational Programs	105	26
YWCA – CITS and FITS Girls Mentorship	64	46

## Summary Report for the Month of October 2004

<b>Probation Services</b>	<i>September 2004</i>	<i>October 2004</i>	<i>Year To Date 2004</i>
Probation Referrals	216	265	2339
Petitions	82	99	840
Selected Court Dispositions:			
California Youth Authority	0	0	9
Log Cabin Ranch	1	0	15
Out of Home Placement	16	14	160
Other Probation	27	26	283
Violation of Probation Petitions Filed	15	22	164
California Youth Authority Monthly Count			
Institutions:			
Males	39	38	
Females	3	3	
<b>Total</b>	<b>42</b>	<b>41</b>	
Parole:			
Males	29	29	
Females	2	2	
<b>Total</b>	<b>31</b>	<b>31</b>	



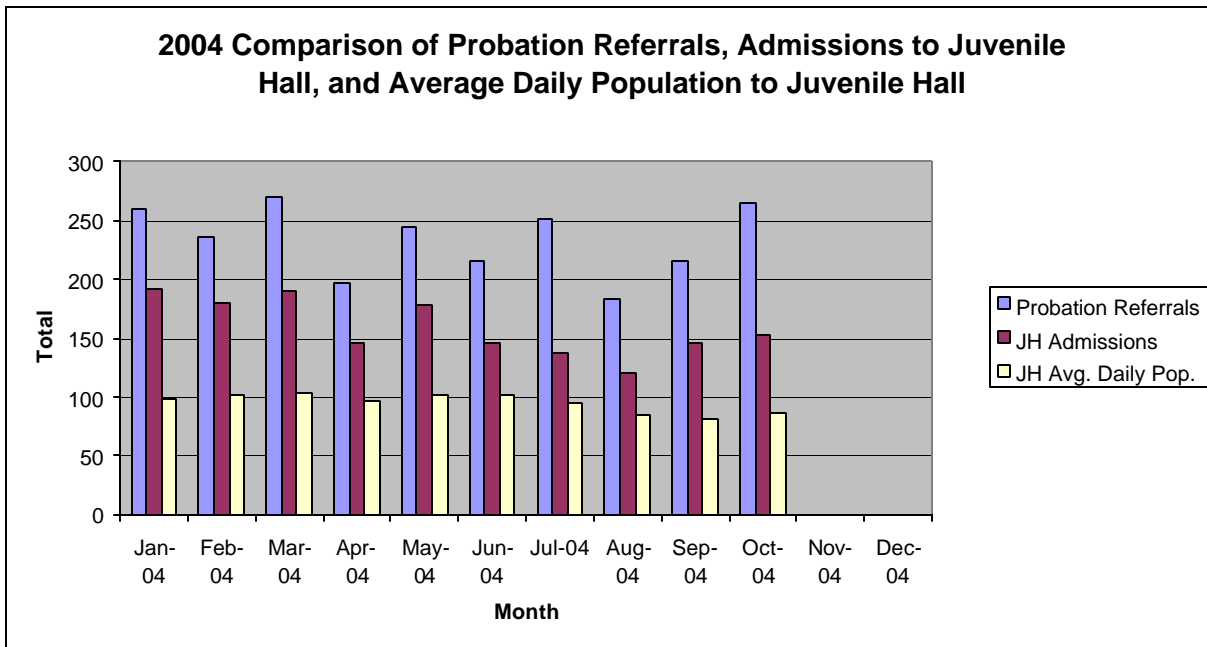
## Summary Report for the Month of October 2004

<b>Probation Services</b>			
<b>Caseload List</b>	September 2004	October 2004	October Average # Youth by PO
South Intake	214	209	41
North Intake	202	226	37
Prevention Diversion	145	142	15
Serious Offenders	95	100	16
Supervision	194	212	26
County Placement	20	14	14
Private Placement	198	204	18
Drug Court	28	30	30
Family Integrated Treatment Services	105	104	13
<i>Total</i>	<b>1201</b>	<b>1241</b>	<b>23</b>
<b>Special Services Unit</b>	New	Closed	Active at end of Month
Record Sealings	9	14	156
Stepparent Adoptions	54	0	0
Terminations	12	0	0
Marriage Consents	3	0	0
Custody Evaluations	0	0	0
	Entered	Completed	Active at end of Month
Community Service	18	9	1206
		Referred	Completed at end of Month
COPS		5	3
Street Law		14	11
Theft Awareness		22	13
Anger Management for boys & girls combined		16	6
Life Management Skills		3	3
Kids Turn Non-Violent Family Skills (still in session)		10	0
Information, Record Checks, Research & Photo Copying Juvenile Records For:	September 2004	October 2004	Year to Date 2004
Job Corps, Probation Departments,			
Military, Law Enforcement,			
Misc., (letters, Memos, Forms, etc.)	143	128	1330

**Section II**  
**Current Month**  
**General Detail**

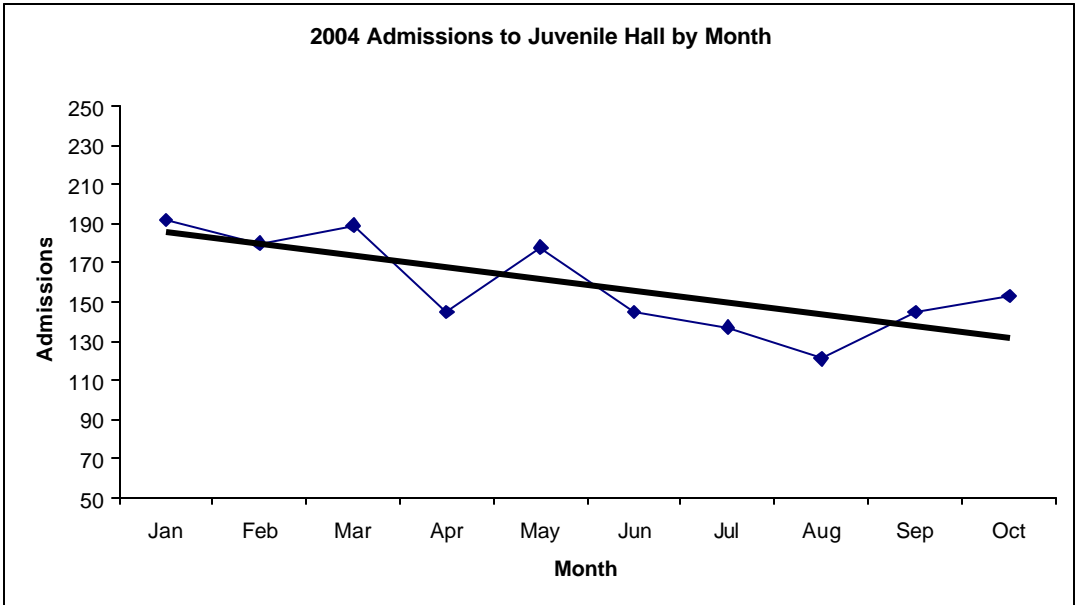
## San Francisco Juvenile Probation

	Jan-04	Feb-04	Mar-04	Apr-04	May-04	Jun-04	Jul-04	Aug-04	Sep-04	Oct-04	Nov-04	Dec-04
Probation Referrals	259	236	270	197	245	216	251	184	216	265		
JH Admissions	192	180	189	145	178	145	137	121	145	153		
JH Avg. Daily Pop.	98	101	103	96	101	101	94	84	81	86		

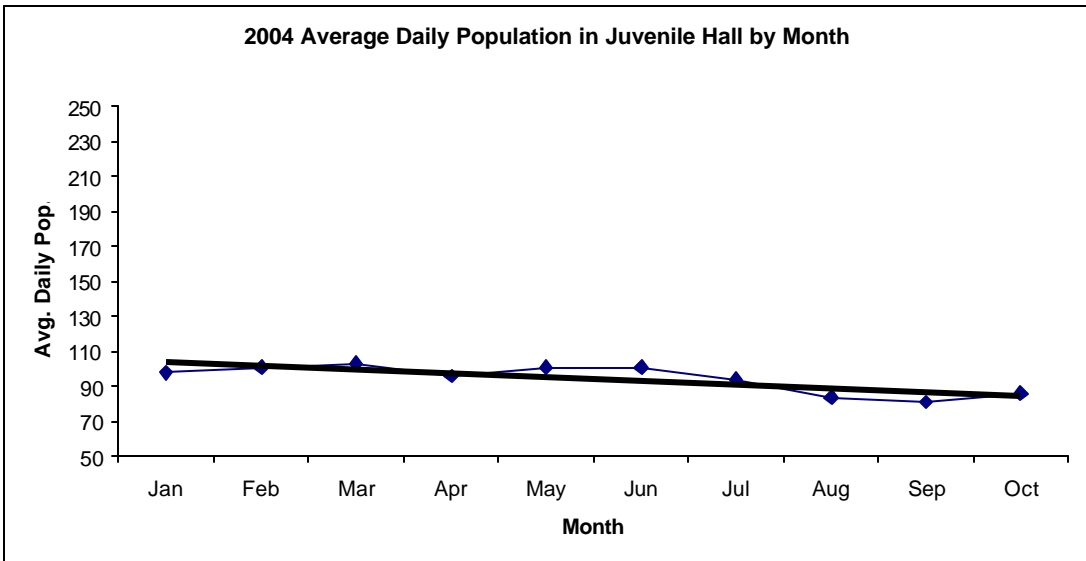


# San Francisco Juvenile Probation Admissions and Average Daily Population In Juvenile Hall (Calendar Year 2004)

Admissions	Jan	Feb	Mar	Apr	May	Jun	Jul	Aug	Sep	Oct	Nov	Dec	Total
2004	192	180	189	145	178	145	137	121	145	153			<b>1585</b>



Avg. Daily Pop.	Jan	Feb	Mar	Apr	May	Jun	Jul	Aug	Sep	Oct	Nov	Dec	Total
2004	98	101	103	96	101	101	94	84	81	86			<b>95</b>

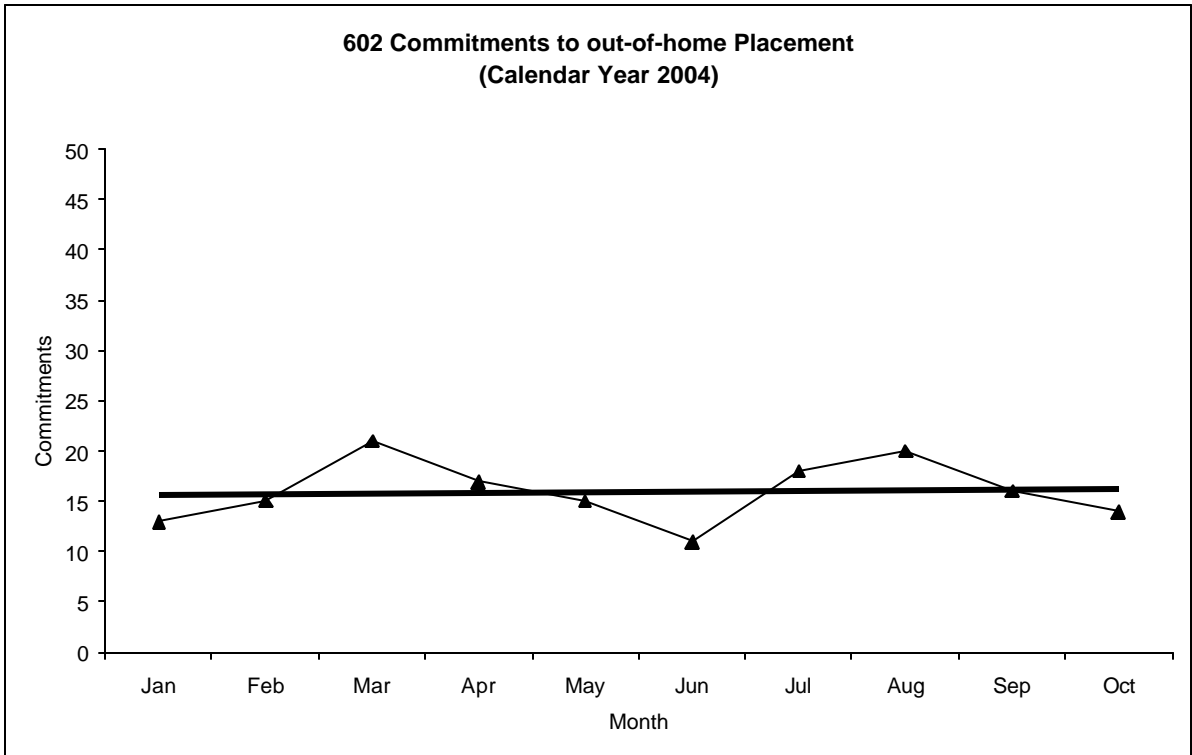


# Out-of-Home Placement<sup>1</sup>

## Commitments of 602's

### Calendar Year 2004

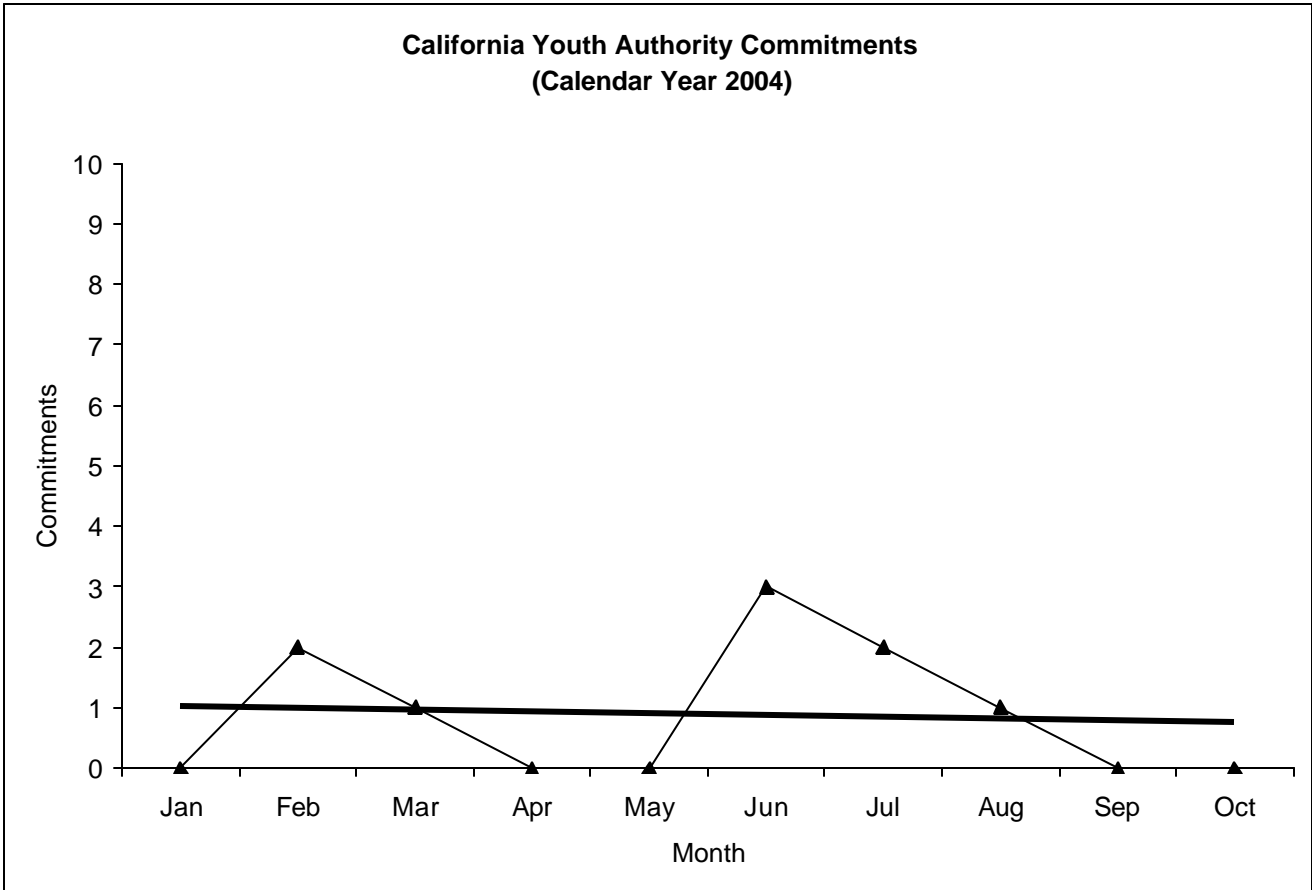
Commitments	Jan	Feb	Mar	Apr	May	Jun	Jul	Aug	Sep	Oct	Nov	Dec	Total
2004	13	15	21	17	15	11	18	20	16	14			<b>160</b>



<sup>1</sup> This report is based on 602 Commitments to out-of-home placements. If there is a 601 commitment, it will show as a footnote here. Figures are regularly updated to include reports from previous reporting periods.

# California Youth Authority Commitments (Calendar Year 2004)

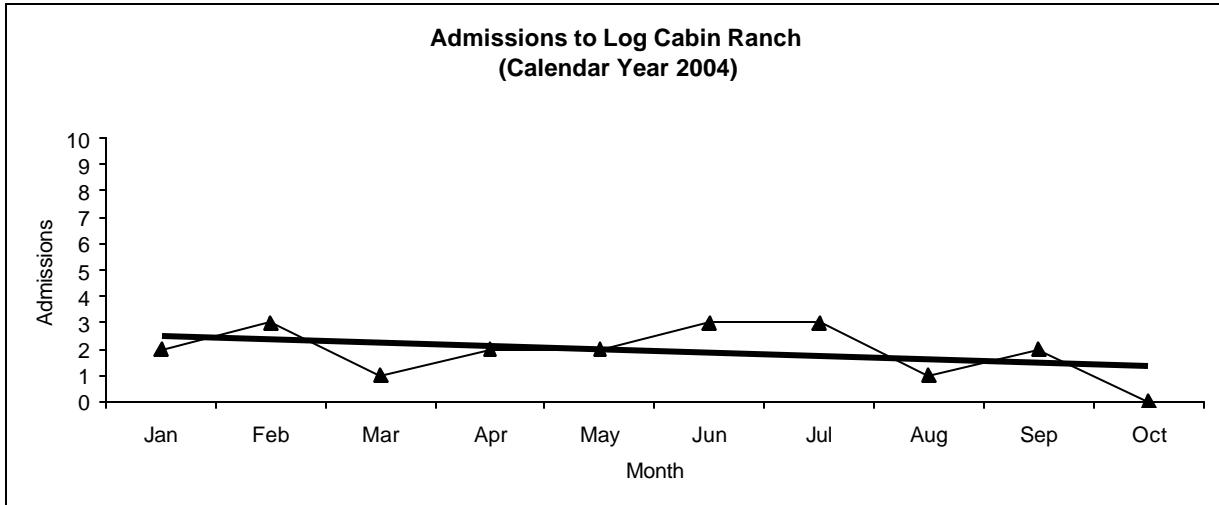
Commitments	Jan	Feb	Mar	Apr	May	Jun	Jul	Aug	Sep	Oct	Nov	Dec	Total
2004	0	2	1	0	0	3	2	1	0	0			9



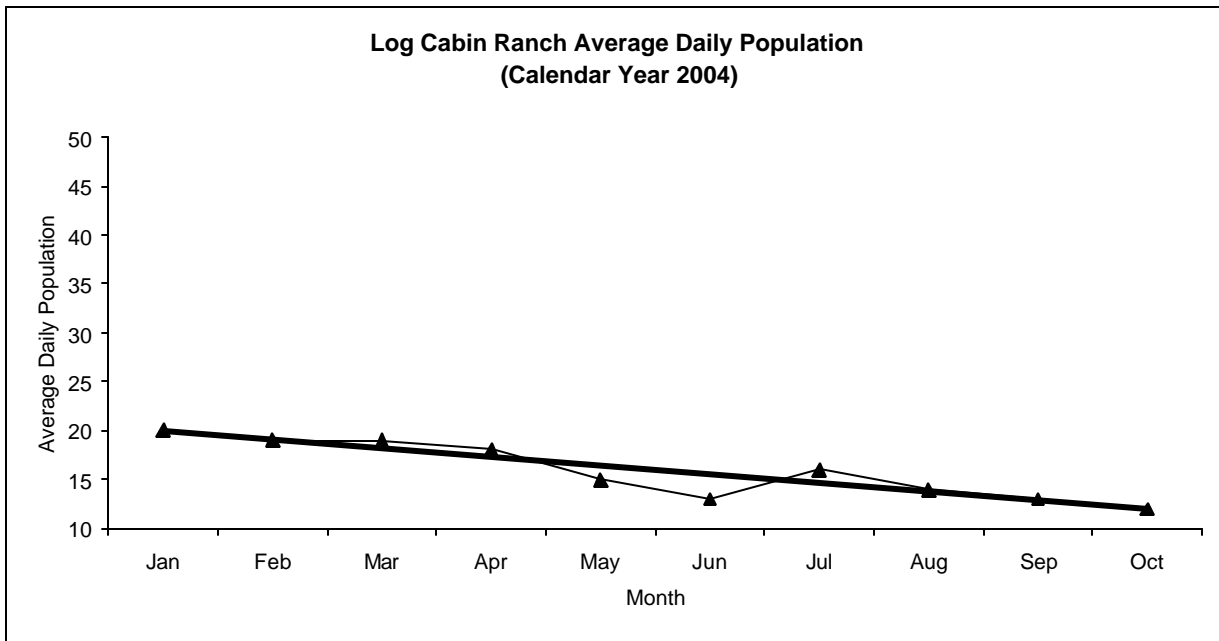
# Log Cabin Ranch

## Admissions and Average Daily Population (Calendar Year 2004)

<b>Admissions</b>	Jan	Feb	Mar	Apr	May	Jun	Jul	Aug	Sep	Oct	Nov	Dec	<b>Total</b>
2004	2	3	1	2	2	3	3	1	2	0			<b>19</b>



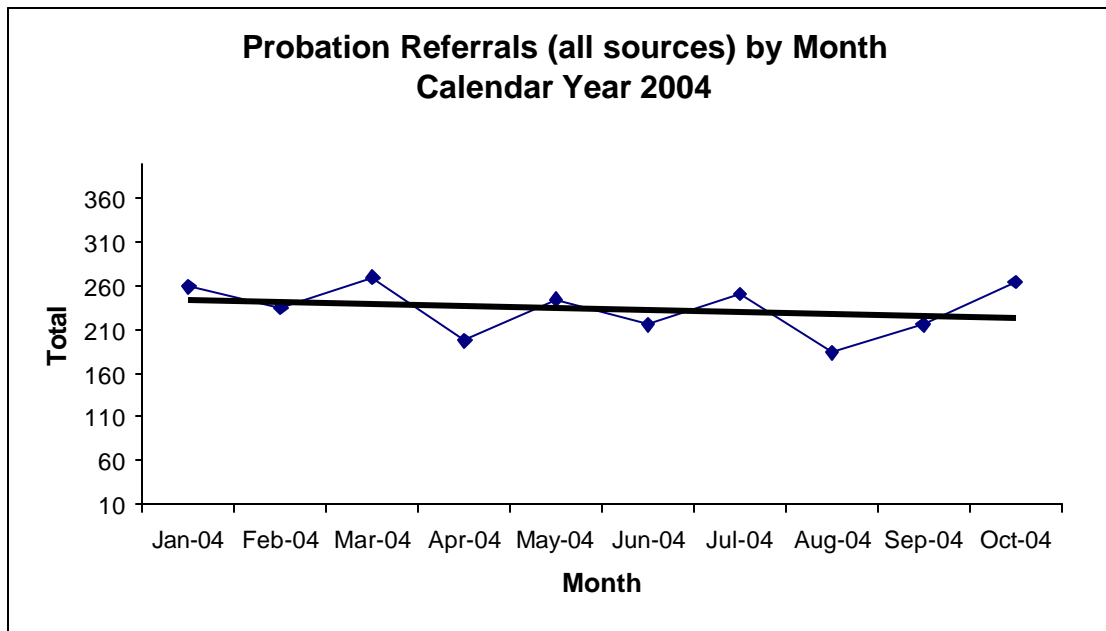
<b>Avg. Daily Pop.</b>	Jan	Feb	Mar	Apr	May	Jun	Jul	Aug	Sep	Oct	Nov	Dec	<b>Total</b>
2004	20	19	19	18	15	13	16	14	13	12			<b>15.90</b>



## Probation Referrals by Month Calendar Year 2004

### Probation Referrals (all sources) by Month (602 W&I)

Jan-04	259
Feb-04	236
Mar-04	270
Apr-04	197
May-04	245
Jun-04	216
Jul-04	251
Aug-04	184
Sep-04	216
Oct-04	265
Nov-04	
Dec-04	





SAN FRANCISCO JUVENILE PROBATION DEPARTMENT  
 MONTHLY INCIDENT REPORT FORM  
 MONTH/YEAR: OCTOBER 2004

<b>Log Cabin Ranch</b>	Battery on Staff	Injury to Staff due to Restraint of Minor	Fight	Battery Youth on Youth	Attempted Escape	AWOL	Attempted Suicide	Serious Contraband (Weapon Illegal Drug)
	<b>0</b>	<b>0</b>	<b>0</b>	<b>0</b>	<b>0</b>	<b>0</b>	<b>0</b>	<b>0</b>
	Battery on Staff with Injury	Fire	Fight with Injury	Battery Youth on Youth with Injury	Escape	Death	Suicide	Major Property Destruction
<b>0</b>	<b>0</b>	<b>0</b>	<b>0</b>	<b>0</b>	<b>0</b>	<b>0</b>	<b>0</b>	<b>0</b>
<b>Juvenile Hall</b>	Battery on Staff	Injury to Staff due to Restraint of Minor	Fight	Battery Youth on Youth	Attempted Escape	AWOL	Attempted Suicide	Serious Contraband (Weapon Illegal Drug)
	<b>0</b>	<b>0</b>	<b>1</b>	<b>1</b>	<b>0</b>	<b>0</b>	<b>0</b>	<b>0</b>
	Battery on Staff with Injury	Fire	Fight with Injury	Battery Youth on Youth with Injury	Escape	Death	Suicide	Major Property Destruction
<b>0</b>	<b>0</b>	<b>1</b>	<b>2</b>	<b>0</b>	<b>0</b>	<b>0</b>	<b>0</b>	<b>0</b>

## Grievances Filed October 2004

### San Francisco Juvenile Probation Department

#### Juvenile Hall



**Grievances Filed October 2004  
San Francisco Probation Department  
From the office of the Ombudsman.**

<i>Area of Infraction</i>	<i>Title 15 Article/Section</i>	<i>Girls Unit</i>	<i>B1</i>	<i>B2</i>	<i>B3</i>	<i>B4</i>	<i>B5</i>	<i>TOTAL</i>
<i>Recreation and Exercise</i>	<i>6.1371</i>	<i>0</i>	<i>1</i>	<i>0</i>	<i>0</i>	<i>0</i>	<i>0</i>	<i>1</i>
<i>Discipline</i>	<i>7.1390</i>	<i>1</i>	<i>1</i>	<i>0</i>	<i>0</i>	<i>0</i>	<i>0</i>	<i>2</i>
<i>Discipline Process</i>	<i>7.1391</i>	<i>0</i>	<i>0</i>	<i>0</i>	<i>0</i>	<i>0</i>	<i>1</i>	<i>1</i>
<i>Juvenile Rights</i>	<i>12.2</i>	<i>0</i>	<i>0</i>	<i>0</i>	<i>0</i>	<i>0</i>	<i>1</i>	<i>1</i>
<i>Meritless</i>	<i>12.2</i>	<i>1</i>	<i>0</i>	<i>0</i>	<i>0</i>	<i>3</i>	<i>2</i>	<i>6</i>
<i>Counseling and Casework</i>	<i>5.1356</i>	<i>0</i>	<i>0</i>	<i>0</i>	<i>0</i>	<i>1</i>	<i>0</i>	<i>1</i>
<b>Total</b>		<b>2</b>	<b>2</b>	<b>0</b>	<b>0</b>	<b>4</b>	<b>4</b>	<b>12</b>

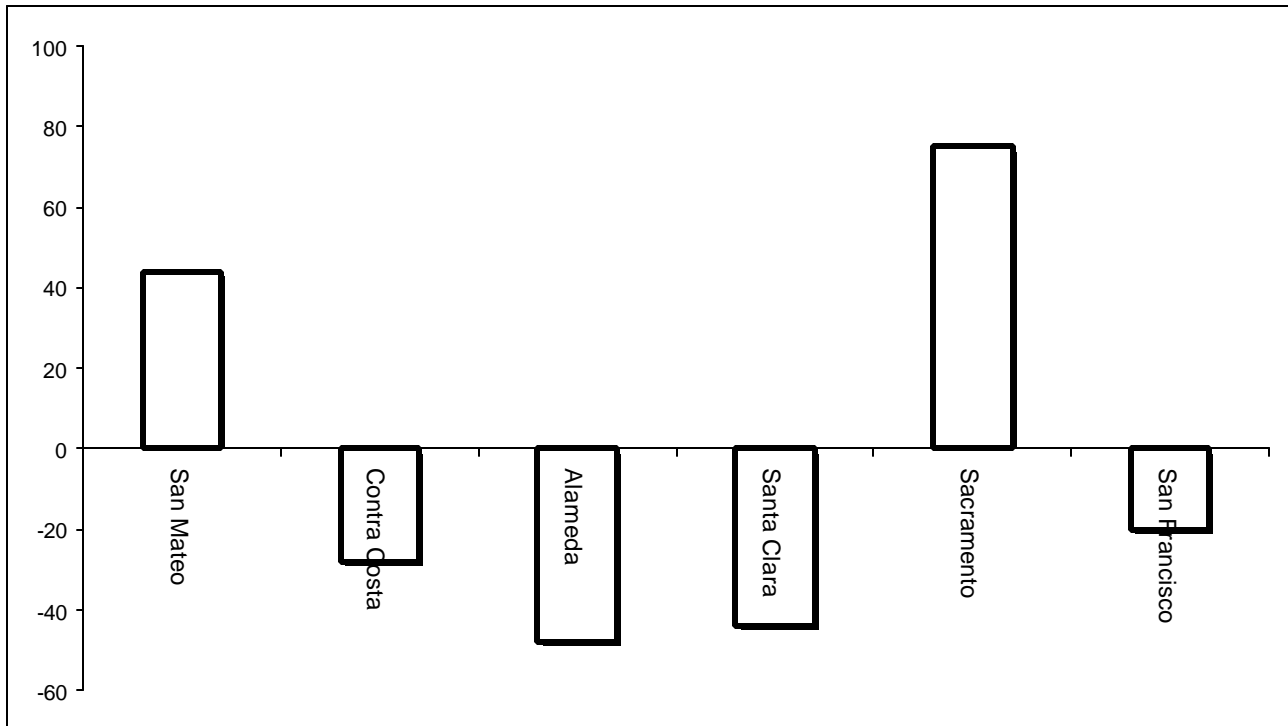
\* Meritless grievances range from, food, clothing and medical non-issues.

#### Log Cabin Ranch

<b>Type</b>	<b>Log Cabin Ranch</b>
Food/Snacks	0
Laundry	0
Personal Property	0
Phone Calls	0
Procedures	0
Head Call	0
Discipline	0
Complaints vs. Staff	0
Cottage Change	0
Medical	0
School	0
Probation	0
Miscellaneous	0
<b>Total</b>	<b>0</b>

## Bay Area Resident Juvenile Hall Comparison Over/Under Capacity

on November 1<sup>st</sup>, 2004

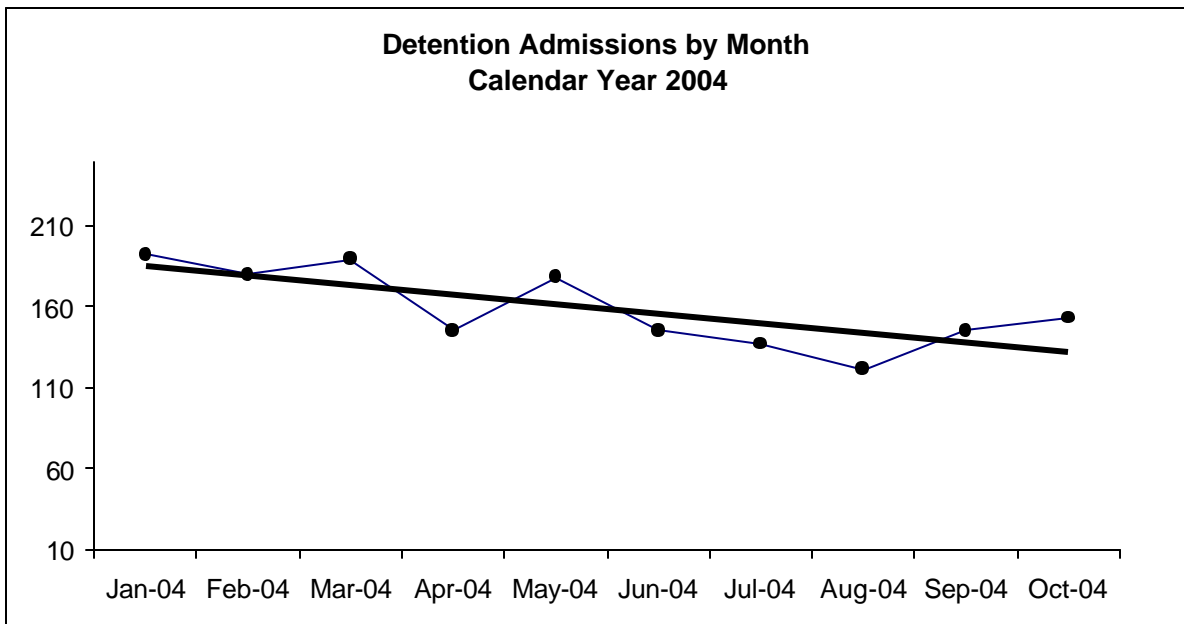


	Rated Capacity	Actual	Over/Under Capacity
San Mateo	130	174	44
Contra Costa	160	132	-28
Alameda	288	240	-48
Santa Clara	329	285	-44
Sacramento	256	331	75
San Francisco	104	84	-20

# Juvenile Hall Admissions by Month Calendar Year 2004

## Detention Admissions by Month

Jan-04	192
Feb-04	180
Mar-04	189
Apr-04	145
May-04	178
Jun-04	145
Jul-04	137
Aug-04	121
Sep-04	145
Oct-04	153
Nov-04	
Dec-04	

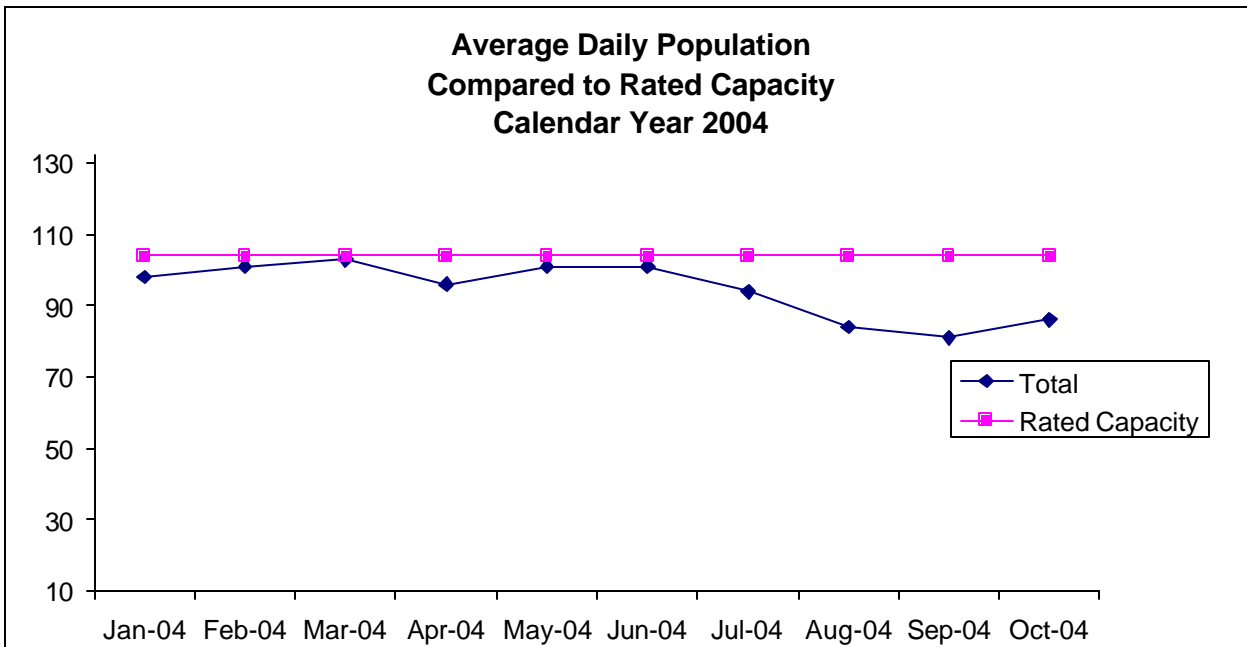


**Characteristics of Juvenile Hall Detainees on October 31<sup>st</sup>, 2004  
Using CJIS Code From the Department of Justice**

Detention Reason	Offense Code	MF	Count	%
ATTEMPTED MURDER:SECOND DEGREE ON PEACE OFFICER	664 /187 (A) PC	F	1	1.19%
ORAL COPULATION IN CONCERT W/FORCE/ETC	288 A (D)(1) PC	F	3	3.57%
RAPE BY FORCE/FEAR/ETC	261 (A)(2) PC	F	1	1.19%
LEWD OR LASCIVIOUS ACTS W/CHILD UNDER 14 YEARS	288 (A) PC	F	1	1.19%
CARJACKING	215 (A) PC	F	2	2.38%
ARSON:INHABITED STRUCTURE/PROPERTY	451 (B) PC	F	1	1.19%
ROBBERY	212.5 PC	F	2	2.38%
TRANSPORT/SELL NARCOTIC/CONTROLLED SUBSTANCE	11352 (A) HS	F	7	8.33%
POSSESS/PURCHASE COCAINE BASE FOR SALE	11351.5 HS	F	2	2.38%
BURGLARY:FIRST DEGREE	459 PC	F	2	2.38%
ROBBERY:SECOND DEGREE	212.5(C) PC	F	12	14.29%
HAVE FIREARM AT PUBLIC/ETC SCHOOL	626.9(B) PC	F	1	1.19%
POSSESS/PURCHASE FOR SALE NARCOTIC/CONTROLLED SUBSTANCE	11351 HS	F	1	1.19%
SEXUAL BATTERY	243.4(A) PC	F	1	1.19%
ASSAULT WITH FIREARM ON PERSON	245 (A)(2) PC	F	1	1.19%
FORCE OR ADW NOT FIREARM:GBI LIKELY	245 (A)(1) PC	F	5	5.95%
BATTERY ON CUSTODIAL OFFICER	243.1 PC	F	1	1.19%
POSSESS NARCOTIC CONTROLLED SUBSTANCE	11350 (A) HS	F	1	1.19%
POSSESS MARIJUANA FOR SALE	11359 HS	F	1	1.19%
POSSESS FIREARM W/ALTERED IDENTIFICATION	12091 PC	F	1	1.19%
CARRY CONCEALED WEAPON WHILE ENGAGED IN CRIMINAL STREET GANG	12025 (B) PC	F	1	1.19%
CARRY CONCEALED WEAPON:PROHIBITED CLASS/UNLAWFUL POSSESSION	12025 (B)(4) PC	F	1	1.19%
GRAND THEFT FROM PERSON	487 (C) PC	F	1	1.19%
TAKE VEHICLE W/O OWNER'S CONSENT/VEHICLE THEFT	10851 (A) VC	F	2	2.38%
POSSESS/MANUFACTURE/SELL DANGEROUS WEAPONS/EXPLOSIVES/ETC	12020 (A) PC	F	1	1.19%
POSSESS ANY ASSAULT WEAPON	12280 (B) PC	F	1	1.19%
OBSTRUCT/RESIST/ETC PUBLIC/PEACE OFFICER/EMERGENCY MED TECH	148 (A)(1) PC	M	6	7.14%
BATTERY ON PEACE OFFICER/EMERGENCY PERSONNEL/ETC	242 /243 PC	M	1	1.19%
DISORDERLY CONDUCT:PROSTITUTION	647 (B) PC	M	1	1.19%
LOITER:INTENT:PROSTITUTION	653.22(A) PC	M	2	2.38%
FAIL TO OBEY ORDER OF JUVENILE COURT 602 WI	777 (A)(2) WI	M	2	2.38%
CHANGE OF PLACEMENT/PLACEMENT FAILURE	737 WI	M	2	2.38%
VIOLATION(S) OF HOME SUPERVISION CONDITION	628.1 WI	M	1	1.19%
COURT ORDER	CTORD 602 XX	X	5	5.95%
BENCH WARRANT	BENCH WARRANT	X	7	8.33%
WARRANT 602	WRNT602 XX	X	3	3.57%
		<b>Total</b>	<b>84</b>	<b>100.00%</b>

**Average Daily Population  
By Rated Capacity  
Calendar Year 2004**

	Total	Rated Capacity
Jan-04	98	104
Feb-04	101	104
Mar-04	103	104
Apr-04	96	104
May-04	101	104
Jun-04	101	104
Jul-04	94	104
Aug-04	84	104
Sep-04	81	104
Oct-04	86	104
Nov-04		104
Dec-04		104



## Juvenile Hall Average Length of Stay

For the Month of October 2004

### <sup>1</sup>Released

<b>Range of Days</b>	<i>1-10 days</i>	<i>11-20 days</i>	<i>21-30 days</i>	<i>30 or more days</i>	<b>Total</b>
# of Youth Released	96	18	11	24	149
% of Population	71.30%	8.70%	3.80%	16.30%	100%
# of Days	325	246	262	2417	3250
% of Total Days	10.00%	7.57%	8.06%	74.37%	100%
Average Length of Stay	3.39	13.67	23.82	100.71	21.81

### <sup>2</sup>In Custody

<b>Range of Days</b>	<i>1-10 days</i>	<i>11-20 days</i>	<i>21-30 days</i>	<i>30 or more days</i>	<b>Total</b>
# of Youth Detained	24	18	8	34	84
% of Population	38.60%	18.10%	12.60%	30.70%	100%
# of Days	131	284	203	4033	4651
% of Total Days	2.82%	6.11%	4.36%	86.71%	100%
Average Length of Stay	5.46	15.78	25.38	118.62	55.37

Notes: Less than one day of stay is calculated as one day.

<sup>1</sup>Length of stay is calculated according to release date for those who are released.

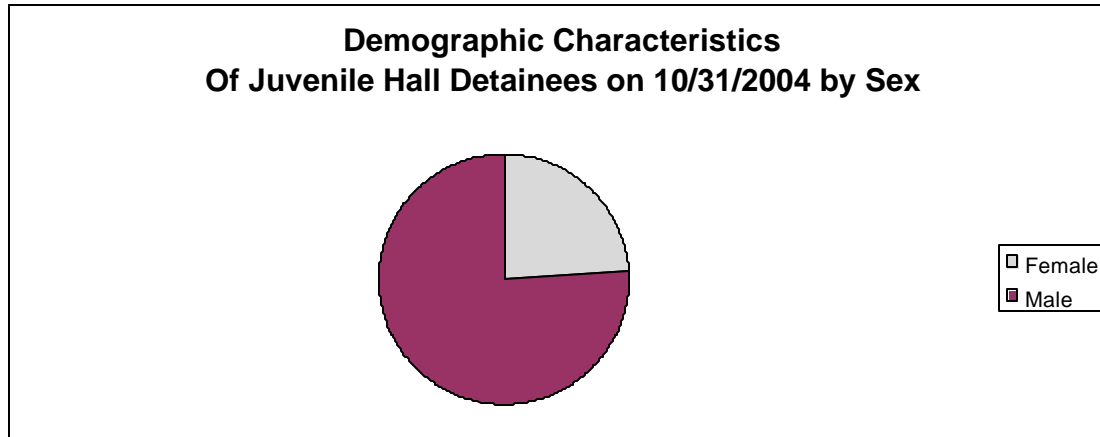
<sup>2</sup>For those still in custody, length of stay is calculated at the last day of the month.

# **Section III**

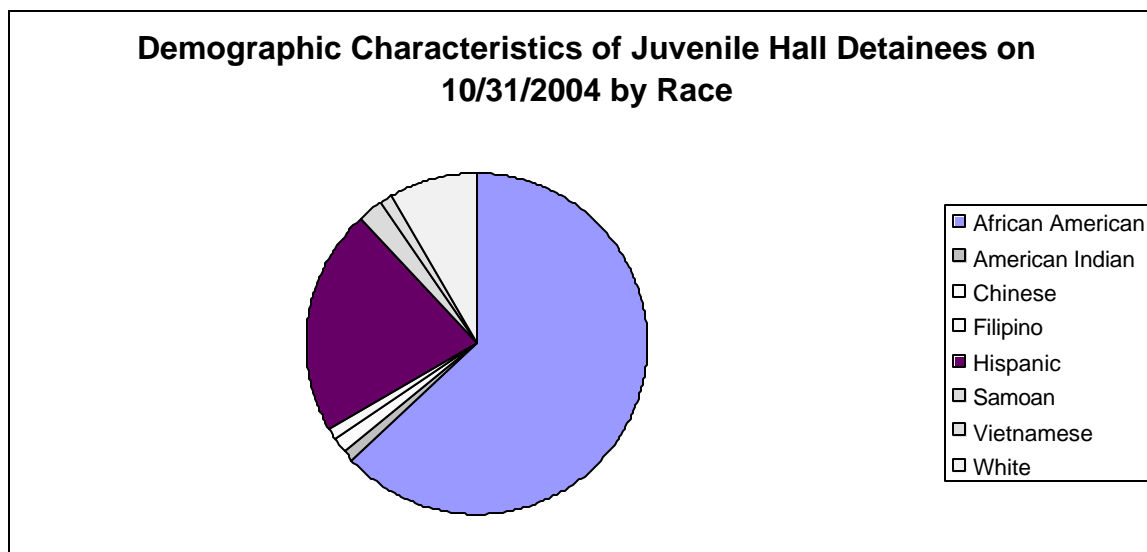
## **Demographics**



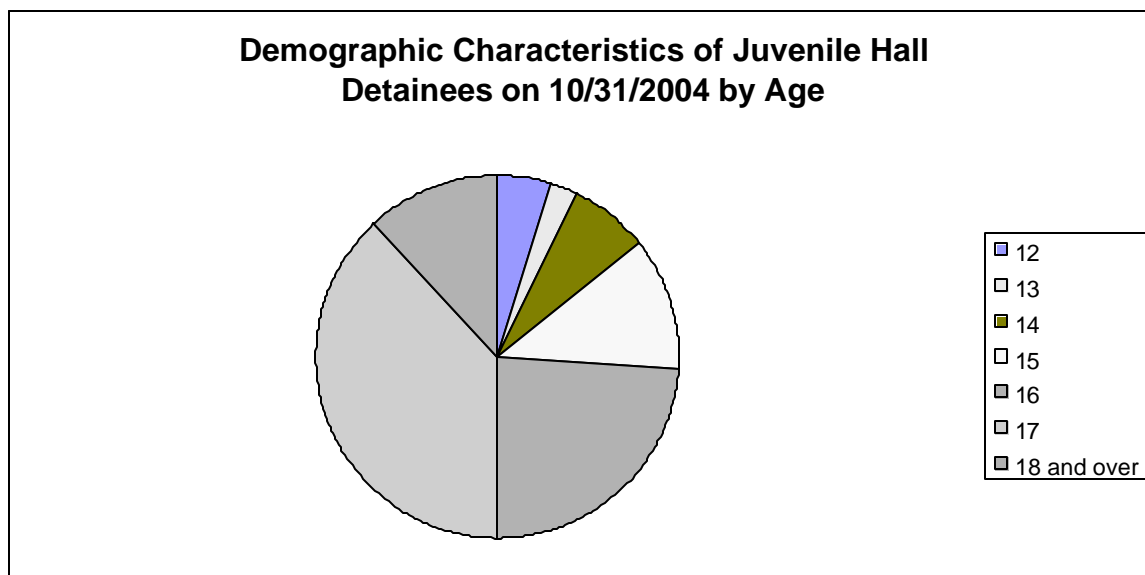
Sex	Frequency	Percent
Female	20	23.81%
Male	64	76.19%
<b>Total</b>	<b>84</b>	<b>100.00%</b>



Race/Ethnic Origin	Frequency	Percent
African American	53	63.10%
American Indian	1	1.19%
Chinese	1	1.19%
Filipino	1	1.19%
Hispanic	18	21.43%
Samoan	2	2.38%
Vietnamese	1	1.19%
White	7	8.33%
<b>Total</b>	<b>84</b>	<b>100.00%</b>

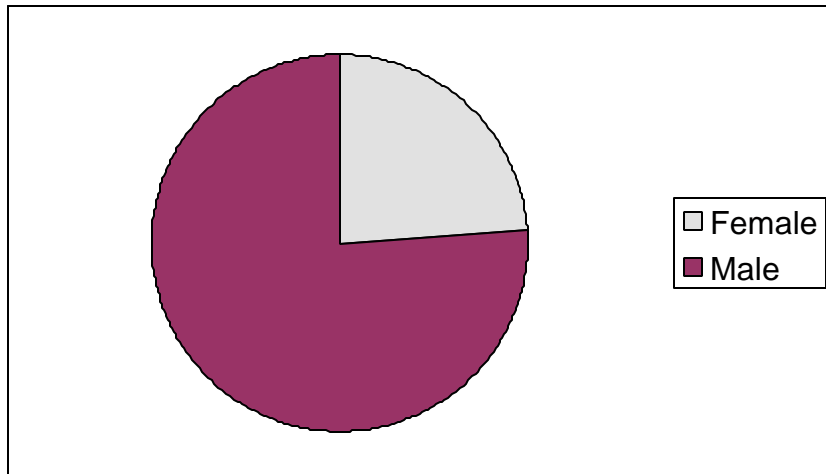


Age	Frequency	Percent
12	4	4.76%
13	2	2.38%
14	6	7.14%
15	10	11.90%
16	20	23.81%
17	32	38.10%
18 and over	10	11.90%
<b>Total</b>	<b>84</b>	<b>100.00%</b>



Demographic Characteristics of Juvenile Hall Detainees  
on 10/31/2004  
Age by Sex

Age	Female	Male	Total	
12	1	3	4	4.76%
13	0	2	2	2.38%
14	0	6	6	7.14%
15	1	9	10	11.90%
16	8	12	20	23.81%
17	9	23	32	38.10%
18 and over	1	9	10	11.90%
<b>Total</b>	<b>20</b>	<b>64</b>	<b>84</b>	<b>100.00%</b>
	<b>23.81%</b>	<b>76.19%</b>	<b>100.00%</b>	



Demographic Characteristics  
Of Juvenile Hall Detainees on October 31<sup>st</sup>, 2004

---

<b>Geographic Residence of Youth</b>	Frequency	Percent
Richmond	1	1.2
Western Addition	10	11.9
South of Market/Tenderloin	1	1.2
Sunset	4	4.8
Haight Ashbury/Castro	1	1.2
Inner Mission	7	8.3
Potrero	1	1.2
Ingleside (West of Twin Peaks)	7	8.3
Outer Mission	12	14.3
Bayview	19	22.6
Non-San Francisco and Unavailable*	21	25.0
	-----	-----
Total	84	100.0

<b>*Non-San Francisco and Unavailable</b>	Frequency	Percent
ANZA	1	4.8
BERKELEY	1	4.8
FULLERTON	1	4.8
LAKEPORT	1	4.8
LOOMIS	1	4.8
MODESTO	1	4.8
OAKLAND	1	4.8
PASO ROBLES	1	4.8
RICHMOND	2	9.5
SACRAMENTO	1	4.8
SUNNYVALE	1	4.8
UNAVAILABLE	9	42.9
	-----	-----
Total	21	100.0

Demographic Characteristics  
Of Juvenile Hall Detainees on October 31<sup>st</sup>, 2004

---

**Race/Ethnic Origin by Sex**

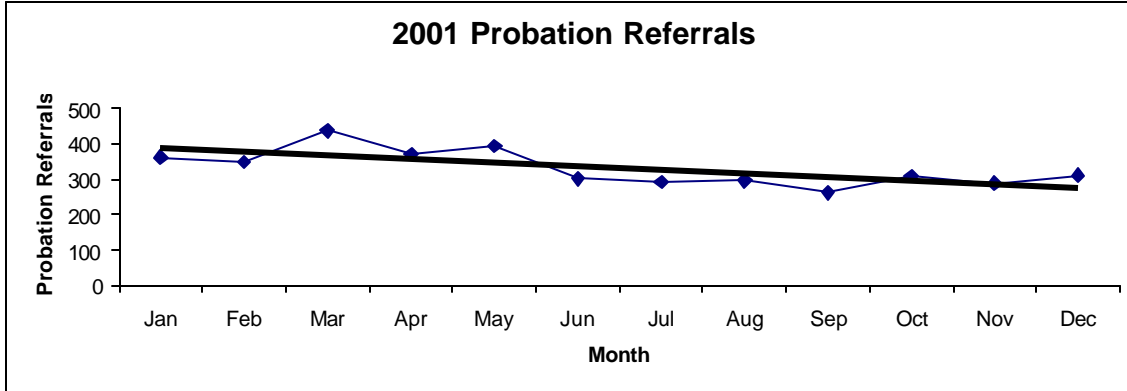
Count	SEX		Row Total
	Female F	Male M	
RACE			
AFRICAN AMERICAN	11	42	53 63.1
CHINESE	1		1 1.2
FILIPINO	1		1 1.2
HISPANIC	2	16	18 21.4
AMERICAN INDIAN		1	1 1.2
SAMOAN	1	1	2 2.4
VIETNAMESE		1	1 1.2
WHITE	4	3	7 8.3
Column Total	20 23.8	64 76.2	84 100.0

# **Section IV**

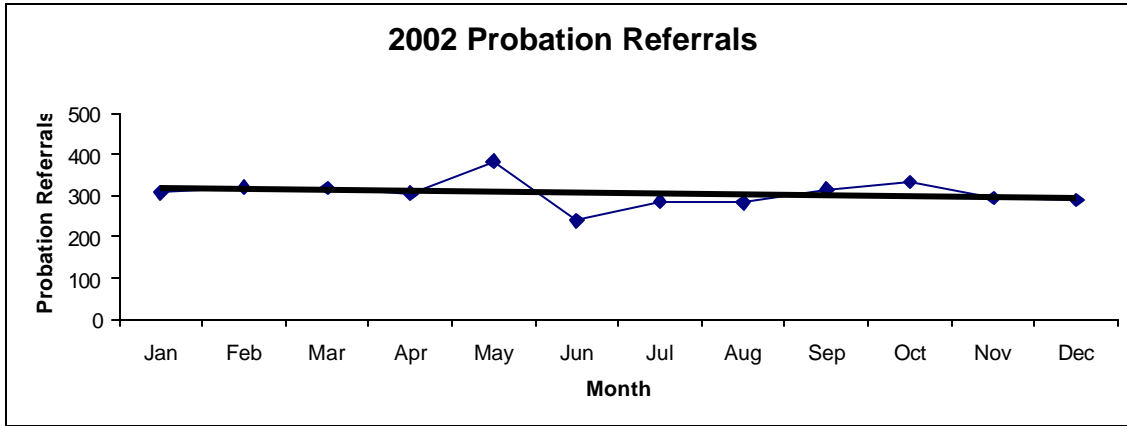
## **Historical Information**

San Francisco Juvenile Probation  
**Probation Referrals (all sources) By Month**  
 (2001-2003)

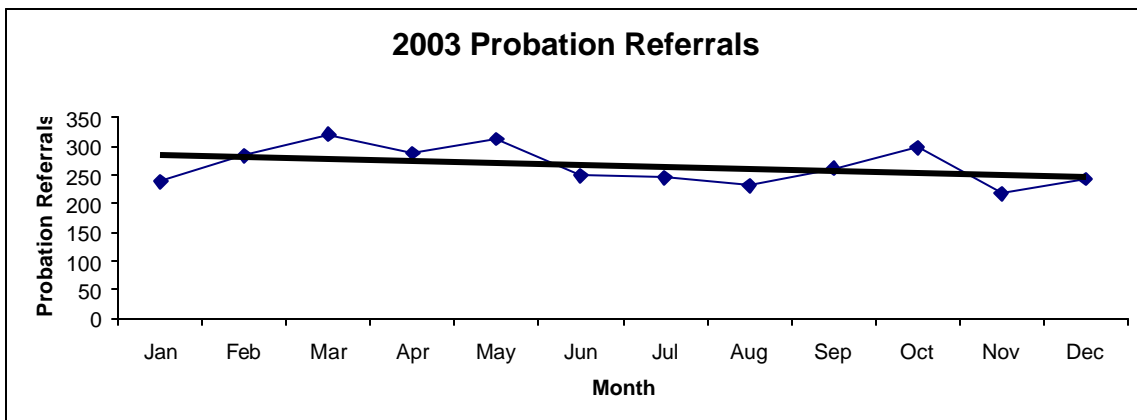
2001 Probation Referrals	Jan	Feb	Mar	Apr	May	Jun	Jul	Aug	Sep	Oct	Nov	Dec	Total
	361	348	437	370	394	301	292	296	262	309	287	311	<b>3968</b>



2002 Probation Referrals	Jan	Feb	Mar	Apr	May	Jun	Jul	Aug	Sep	Oct	Nov	Dec	Total
	308	320	318	305	384	240	286	283	315	333	294	289	<b>3675</b>

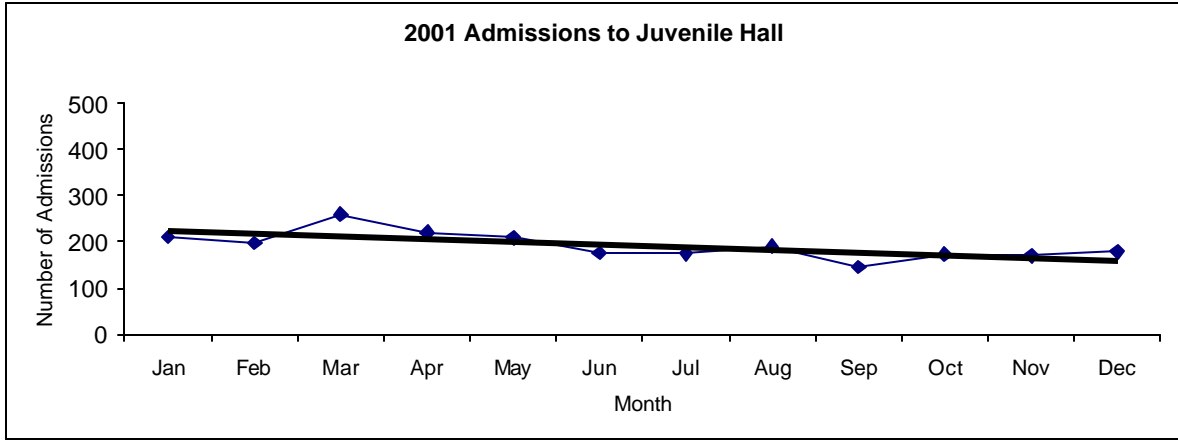


2003 Probation Referrals	Jan	Feb	Mar	Apr	May	Jun	Jul	Aug	Sep	Oct	Nov	Dec	Total
	238	283	320	288	313	248	245	231	261	297	218	243	<b>3185</b>

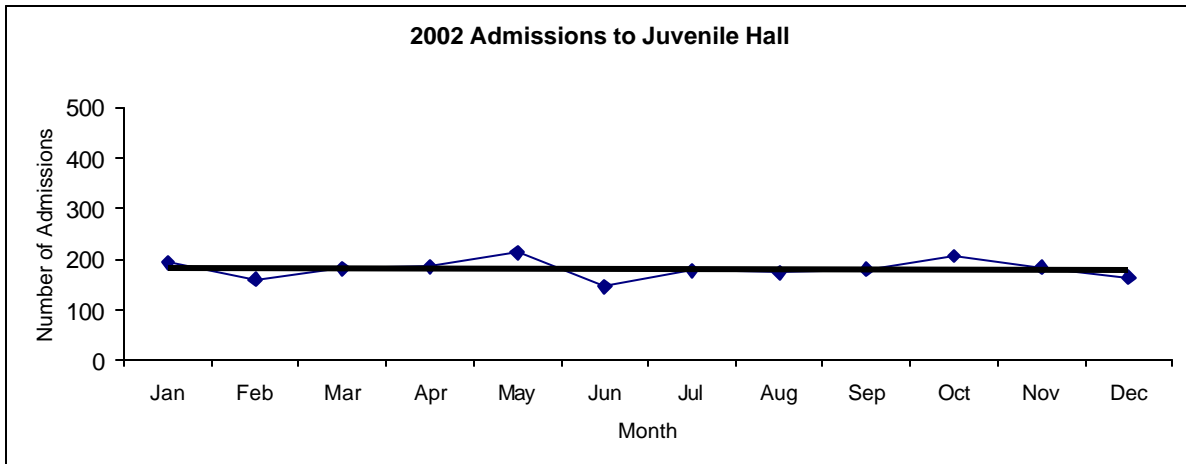


San Francisco Juvenile Probation  
**Juvenile Hall Admissions By Month**  
 (Calendar Years 2001-2003)

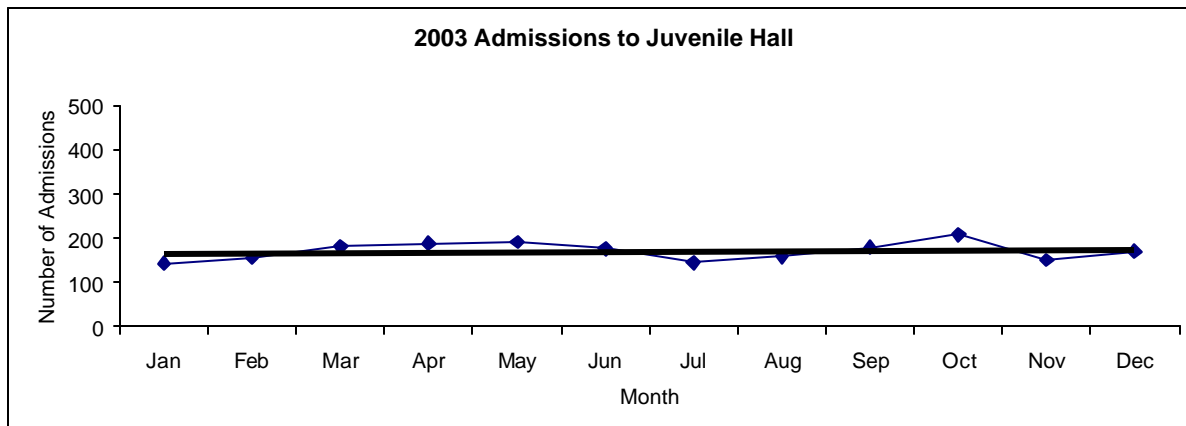
2001 Admissions	Jan	Feb	Mar	Apr	May	Jun	Jul	Aug	Sep	Oct	Nov	Dec	Total
	210	197	260	220	209	176	174	190	145	173	170	178	<b>2302</b>



2002 Admissions	Jan	Feb	Mar	Apr	May	Jun	Jul	Aug	Sep	Oct	Nov	Dec	Total
	193	160	181	185	213	145	177	173	179	206	183	164	<b>2159</b>



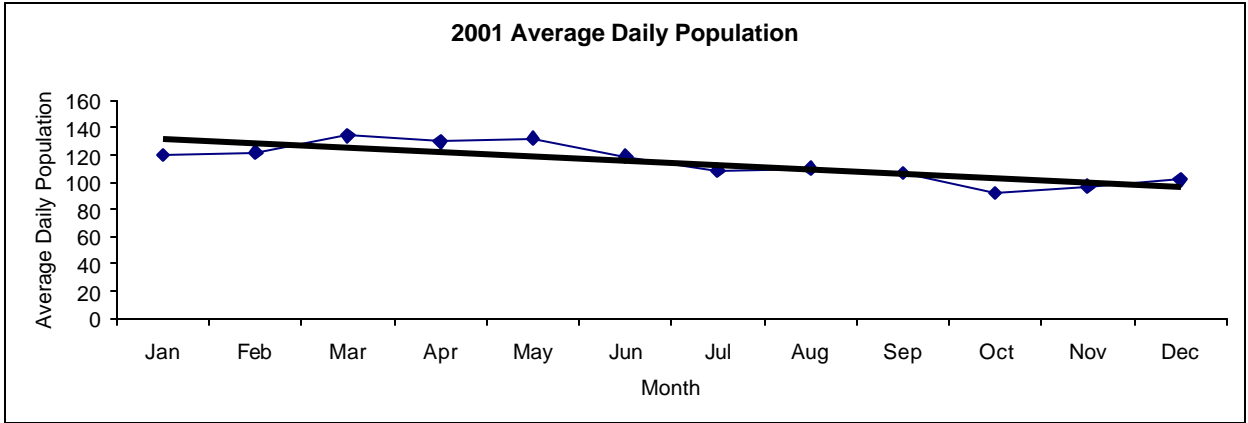
2003 Admissions	Jan	Feb	Mar	Apr	May	Jun	Jul	Aug	Sep	Oct	Nov	Dec	Total
	144	156	181	189	191	176	145	158	179	208	151	170	<b>2048</b>



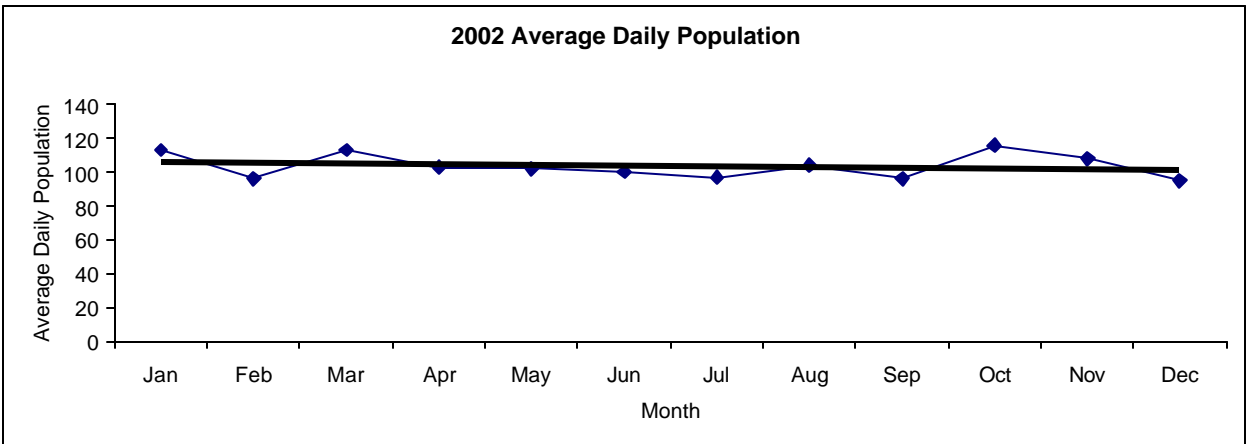


San Francisco Juvenile Probation  
**Juvenile Hall Average Daily Population By Month**  
 (Calendar Years 2001-2003)

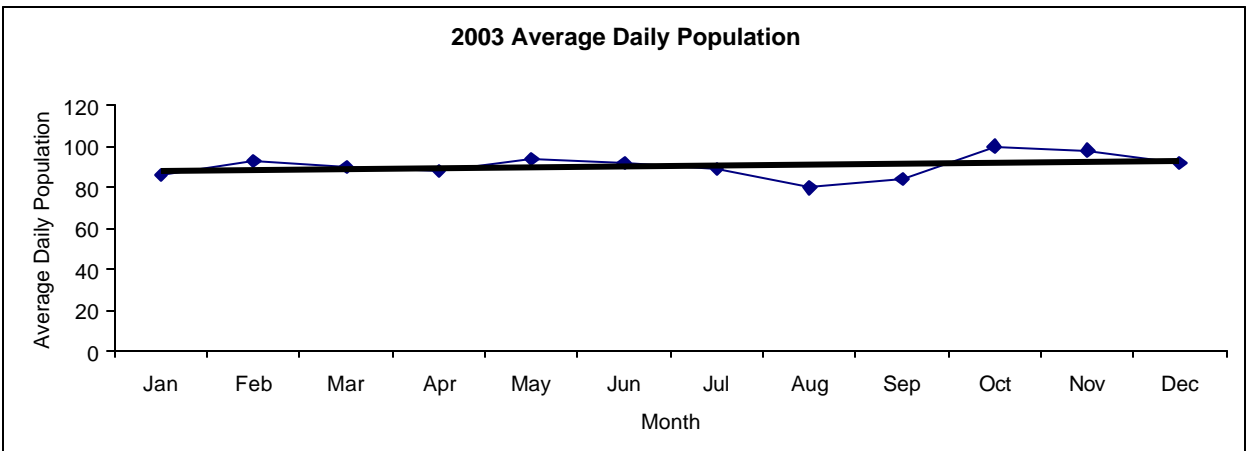
2001 Avg. Daily Pop.	Jan	Feb	Mar	Apr	May	Jun	Jul	Aug	Sep	Oct	Nov	Dec	Total
	120	122	134	130	132	119	109	110	107	92	97	102	<b>115</b>



2002 Avg. Daily Pop.	Jan	Feb	Mar	Apr	May	Jun	Jul	Aug	Sep	Oct	Nov	Dec	Total
	113	96	113	103	102	100	97	104	96	116	108	95	<b>104</b>

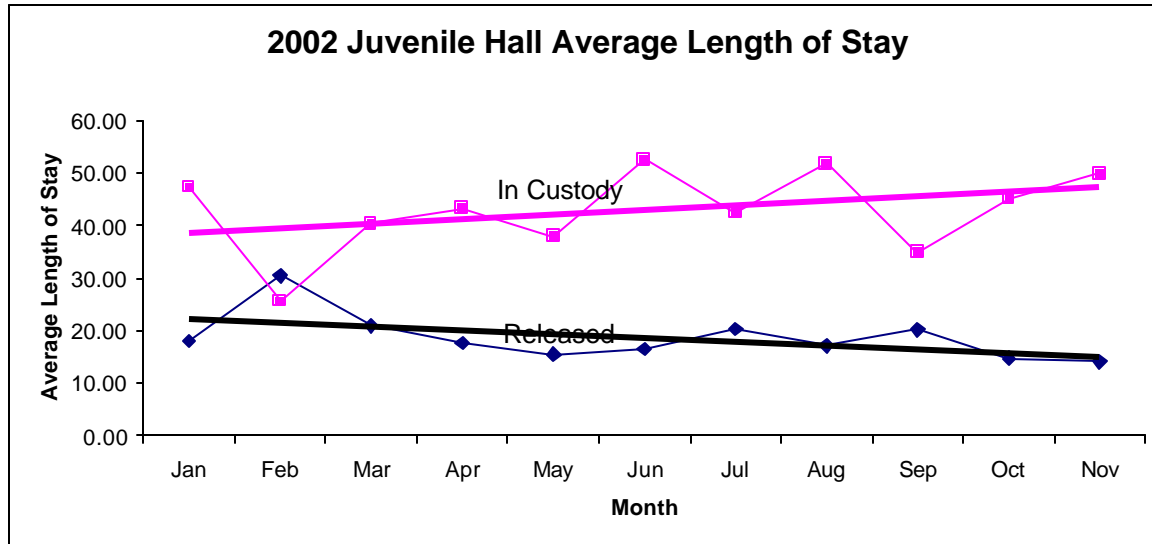


2003 Avg. Daily Pop.	Jan	Feb	Mar	Apr	May	Jun	Jul	Aug	Sep	Oct	Nov	Dec	Total
	86	93	90	88	94	92	89	80	84	100	98	92	<b>91</b>

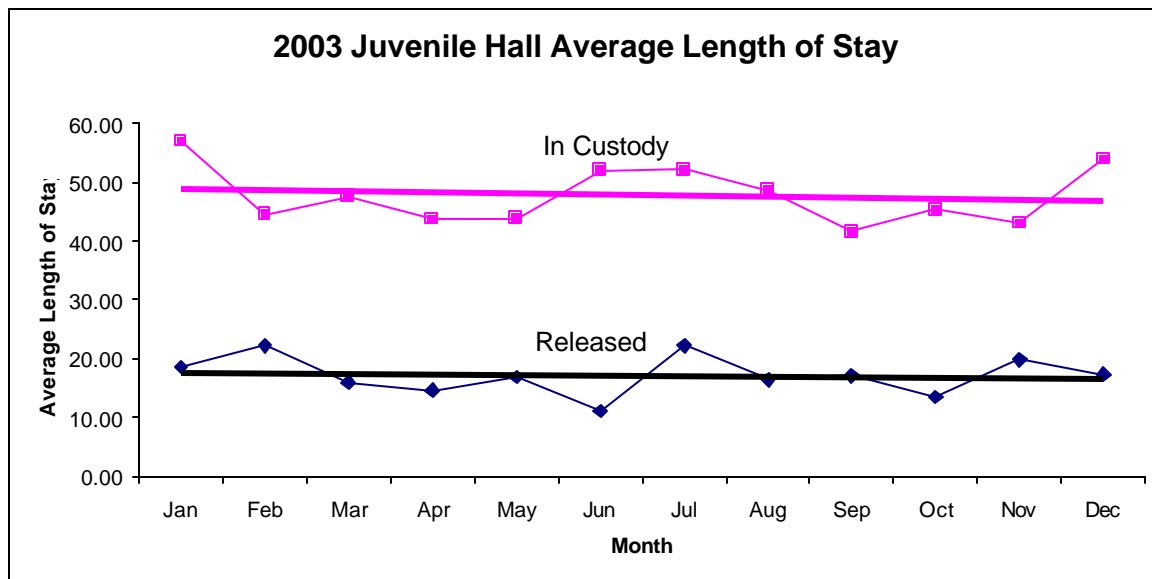


San Francisco Juvenile Probation  
**Juvenile Hall Average Length of Stay By Month**  
 (Calendar Years 2002-2003)

2002 Avg. Length of Stay	Jan	Feb	Mar	Apr	May	Jun	Jul	Aug	Sep	Oct	Nov	Dec	Total
<sup>1</sup> Released	18.05	30.44	20.88	17.65	15.50	16.45	20.22	17.15	20.16	14.67	14.03	18.30	<b>18.63</b>
<sup>2</sup> In Custody	47.30	25.63	40.35	43.29	37.86	52.57	42.41	51.77	34.82	45.11	49.85	58.85	<b>44.15</b>



2003 Avg. Length of Stay	Jan	Feb	Mar	Apr	May	Jun	Jul	Aug	Sep	Oct	Nov	Dec	Total
<sup>1</sup> Released	18.58	22.16	15.97	14.65	16.86	11.07	22.21	16.41	17.13	13.51	19.87	17.30	<b>17.14</b>
<sup>2</sup> In Custody	56.97	44.53	47.63	43.78	43.80	51.98	52.13	48.67	41.61	45.30	43.04	53.96	<b>47.78</b>



**Notes:** Less than one day of stay is calculated as one day.

<sup>1</sup> Length of stay is calculated according to release date for those who are released.

<sup>2</sup> For those still in custody, length of stay is calculated at the last day of the month.