

City and County of San Francisco



Juvenile Probation Department

Monthly Report for December 2004

Presented to the Juvenile Probation Commission

January 26th, 2005

Table of Contents

Section I Summary Reports

Juvenile Hall, Log Cabin Ranch Summary Statistics.....	1
Community Programs Summary Statistics	2
Probation Services Summary Statistics.....	4

Section II Current Month General Detail

Probation Referrals, Juvenile Admissions And Average Daily Population	6
Juvenile Hall Admissions and Average Daily Population.....	7
Commitments to out-of-home placement.....	8
Commitments to California Youth Authority.....	9
Log Cabin Ranch Admissions and Average Daily Population.....	10
Probation Referrals	11
Juvenile Hall And Log Cabin Ranch Incident Report	12
Juvenile Hall And Log Cabin Ranch Grievances Report.....	13
Bay Area Resident Juvenile Hall Comparison	14
Juvenile Hall Admissions.....	15
Juvenile Hall Detainees by Detention Reason.....	16
Juvenile Hall Average Daily Population by Rated Capacity.....	17
Juvenile Hall Average Length of Stay	18

Section III Demographics

Juvenile Hall Detainees by Sex and Race/Ethnic Origin.....	19
Juvenile Hall Detainees by Age	20
Juvenile Hall Detainees by Age and Sex.....	21
Juvenile Hall Detainees by Geographic Residence of Youth.....	22
Juvenile Hall Detainees by Race/Ethnic Origin and Sex.....	23

Section IV
Historical Information

2001-2003 Probation Referrals24
2002-2003 Juvenile Hall Admissions25
2002-2003 Juvenile Hall Average Daily Population.....26
2002-2003 Juvenile Hall Average Length of Stay by Month.....27



Section I

Summary Reports

Summary Report for the Month of December 2004

Juvenile Hall	<i>November 2003</i>	<i>November 2004</i>	<i>December 2003</i>	<i>December 2004</i>	<i>YTD 2003</i>	<i>YTD 2004</i>
Admissions	151	163	170	137	2048	1880
Average Daily Population	98	98	92	88	91	94
Average Length of Stay (Releases)	19.87	23.15	17.30	20.81	17.14	19.18
Average Length of Stay (In Custody)	43.04	43.85	53.96	44.29	47.78	56.49
Releases	150	159	185	144	2062	1890
Log Cabin Ranch						
Admissions:						
First Time Commitments	2	2	3	1	28	22
Recommitments	0	0	0	0	1	0
<i>Total</i>	2	2	3	1	29	22
Releases:						
Graduated	3	1	5	0	33	25
Escape	0	0	0	0	0	0
Other releases	0	1	1	1	11	8
<i>Total</i>	3	2	6	1	44	33
Average Daily Population	20	11	18	13	23	15
Grievances Filed						
Juvenile Hall:						
B1	0	0	*	1	4	6
B2	0	0	*	1	1	17
B3	0	0	*	1	0	2
B4	0	0	*	0	14	7
B5	0	1	*	1	5	16
G2 (CO-ED)	0	0	*	0	3	4
<i>Total</i>	0	1	*	4	27**	52
Log Cabin Ranch	0	0	0	0	0	0
Incident Reports						
Juvenile Hall	21	11	10	12	164	120
Log Cabin Ranch	1	1	2	0	13	11
<i>Total</i>	22	12	12	12	177	131

*Data not available

**as of October 2003

Summary Report for the Month of December 2004

Community Programs	<i>Program Vacancies by Agency on December 2004</i>	<i>Active in program November 2003</i>	<i>Active in Program November 2004</i>	<i>Active in Program December 2003</i>	<i>Active in Program December 2004</i>
IHBS Monthly Client Count					
BayView Hunters Point Foundation	2	16	13	16	13
Chinatown Youth Center	2	10	13	10	13
Morrisania West, Inc.	3	11	12	11	12
Samoan Community Development Center	13	9	2	9	2
Potrero Hill Neighborhood House	6	7	9	7	9
Instituto Familiar de La Raza	8	22	22	22	22
Vietnamese Youth Development Center	0	7	7	7	7
Brothers Against Guns	0	16	30	16	30
<i>Total</i>	34	98	108	98	108
<i>December 2004 Percent Program Utilization</i>	80%				
<i>December 2004 Percent Change from last report</i>	0%				

Summary Report for TANF and Girls Programs
Data was not available from Community Programs

PROGRAM	ANNUAL GOAL	NUMBER SERVED
California Community Dispute Services: Youth Accountability Boards	45	0
CARECEN: Tattoo Removal and Case Management	45	0
Center for Young Women's Development: Girls Services	40	0
Community Works – Girls Diversion Program	24	0
Community Works – Girls Therapeutic Arts Curriculum in Juvenile Hall	100	0
Community Works – ROOTS Support for Children of Incarcerated Parents	40	0
Edgewood Kinship Support Network	30	0
Family Restoration House: Life Skills	30	0
Girls 2000: Girls Services and Family Support Services	20	0
Instituto Familiar de la Raza – Case Management	14	0
Mission Neighborhood Center: Young Queens on the Rise – Girls Services	35	0
Performing Arts Workshop: Arts Education at Impact High School	30	0
SAGE: Girls Services	35	0
Samoan Community Development Center: Anger Management	75	0
Special Services for Groups – Occupational Therapy Training Program	50	0
United Way/Girls Justice Initiative: Detention-based Case Management & Inside Mentoring Program	300 72	0 0
Urban Services YMCA: Bayview Beacon Truancy Support	50	0
YGCIC GED & Focus Vocational Programs	105	0
YWCA – CITS and FITS Girls Mentorship	64	0

Summary Report for the Month of December 2004

Probation Services	<i>November 2004</i>	<i>December 2004</i>	<i>Year To Date 2004</i>
Probation Referrals	234	222	3026
Petitions	106	100	1046
Selected Court Dispositions:			
California Youth Authority	0	0	9
Log Cabin Ranch	2	3	20
Out of Home Placement	18	16	194
Other Probation	26	30	339
Violation of Probation Petitions Filed	25	16	205
California Youth Authority Monthly Count			
Institutions:			
Males	39	37	
Females	3	3	
Total	42	40	
Parole:			
Males	28	29	
Females	2	2	
Total	30	31	

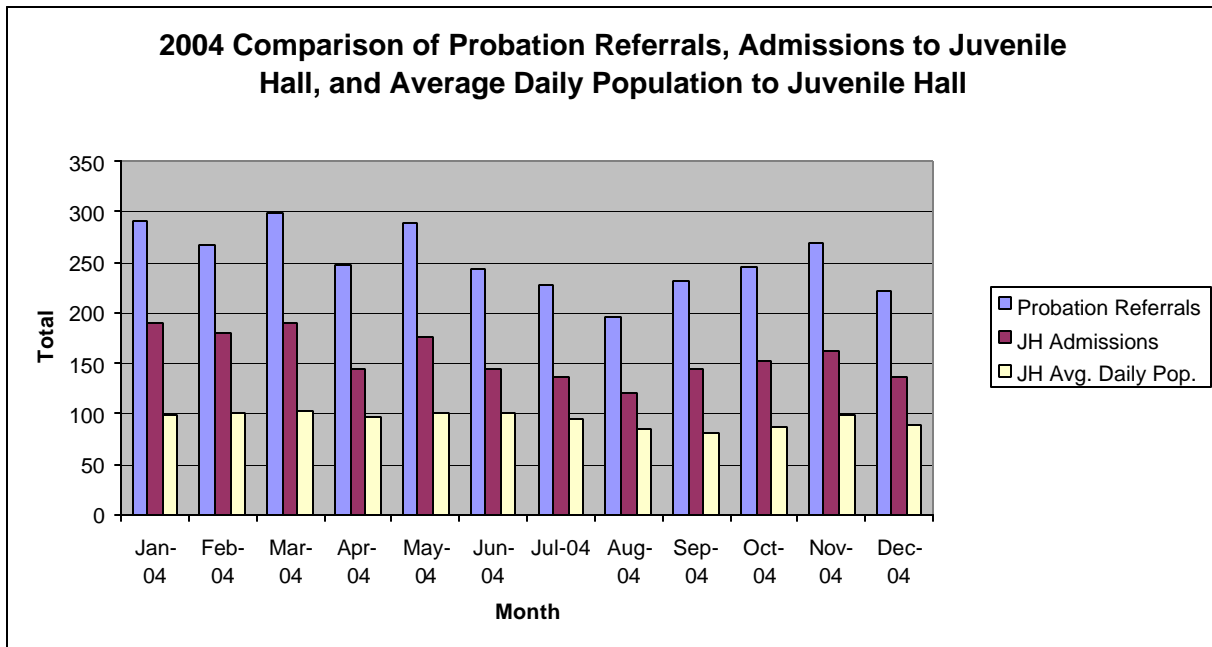
Summary Report for the Month of December 2004

Probation Services			
Caseload List	November 2004	December 2004	December Average # Youth by PO
South Intake	223	220	44
North Intake	256	259	43
Prevention Diversion	133	135	15
Serious Offenders	114	113	18
Supervision	209	206	25
County Placement	15	16	16
Private Placement	211	212	19
Drug Court	33	33	33
Family Integrated Treatment Services	93	95	11
<i>Total</i>	1287	1289	25
Special Services Unit	New	Closed	Active at end of Month
Record Sealings	56	4	158
Stepparent Adoptions	0	0	56
Terminations	0	0	12
Marriage Consents	2	0	3
Custody Evaluations	0	0	0
	Entered	Completed	Active at end of Month
Community Service	20	16	1221
		Referred	Completed at end of Month
COPS		0	0
Street Law (next class 2/5/05)		0	0
Theft Awareness (next class in December)		16	6
Anger Management for boys (still in session)		9	0
Anger Management for girls (still in session)		8	0
Life Management Skills		3	3
Kids Turn Non-Violent Family Skills (in session)		17	0
Information, Record Checks, Research & Photo Copying Juvenile Records For:	November 2004	December 2004	Year to Date 2004
Job Corps, Probation Departments, Military, Law Enforcement,			
Misc., (letters, Memos, Forms, etc.)	110	105	1545

Section II
Current Month
General Detail

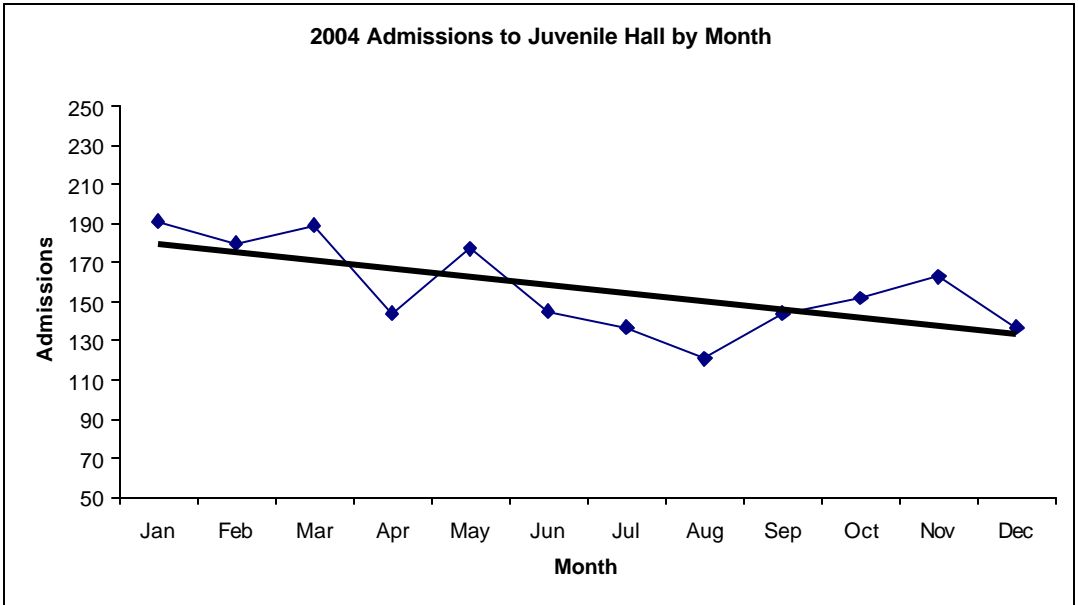
San Francisco Juvenile Probation

	Jan-04	Feb-04	Mar-04	Apr-04	May-04	Jun-04	Jul-04	Aug-04	Sep-04	Oct-04	Nov-04	Dec-04
Probation Referrals	291	268	298	247	289	243	227	195	232	245	269	222
JH Admissions	191	180	189	144	177	145	137	121	144	152	163	137
JH Avg. Daily Pop.	98	101	103	96	101	101	94	84	81	86	98	88

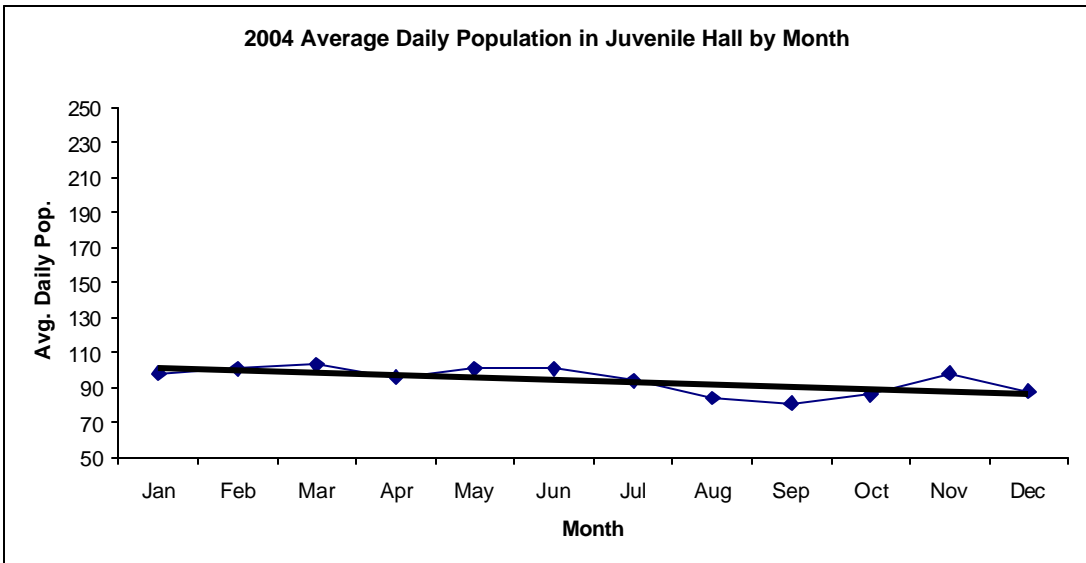


San Francisco Juvenile Probation Admissions and Average Daily Population In Juvenile Hall (Calendar Year 2004)

Admissions	Jan	Feb	Mar	Apr	May	Jun	Jul	Aug	Sep	Oct	Nov	Dec	Total
2004	191	180	189	144	177	145	137	121	144	152	163	137	1880



Avg. Daily Pop.	Jan	Feb	Mar	Apr	May	Jun	Jul	Aug	Sep	Oct	Nov	Dec	Total
2004	98	101	103	96	101	101	94	84	81	86	98	88	94

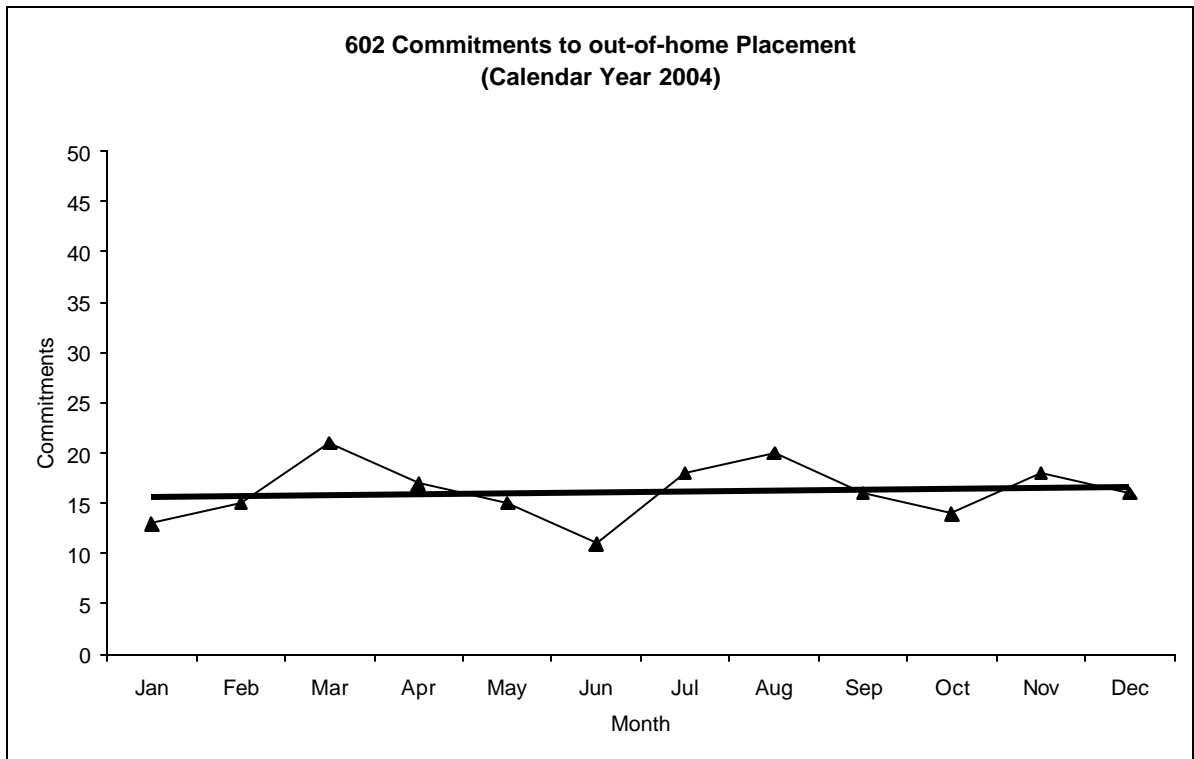


Out-of-Home Placement¹

Commitments of 602's

Calendar Year 2004

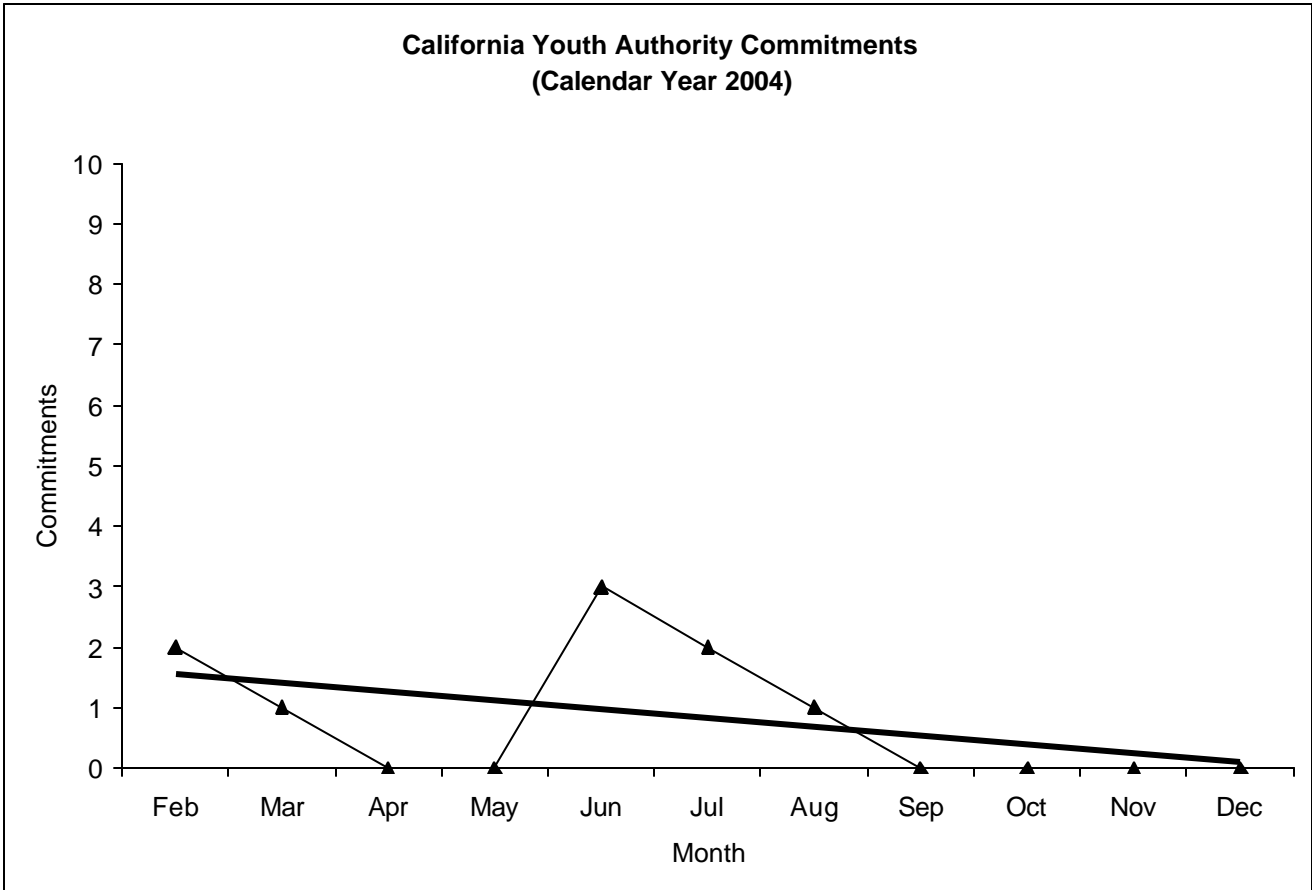
Commitments	Jan	Feb	Mar	Apr	May	Jun	Jul	Aug	Sep	Oct	Nov	Dec	Total
2004	13	15	21	17	15	11	18	20	16	14	18	16	194



¹ This report is based on 602 Commitments to out-of-home placements. If there is a 601 commitment, it will show as a footnote here. Figures are regularly updated to include reports from previous reporting periods.

California Youth Authority Commitments (Calendar Year 2004)

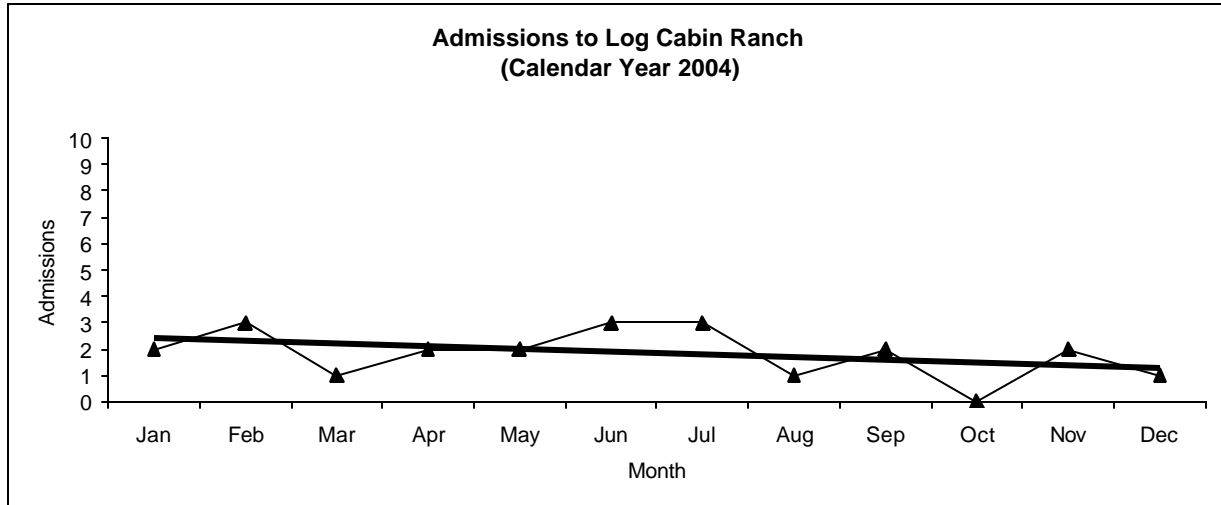
Commitments	Jan	Feb	Mar	Apr	May	Jun	Jul	Aug	Sep	Oct	Nov	Dec	Total
2004	0	2	1	0	0	3	2	1	0	0	0	0	9



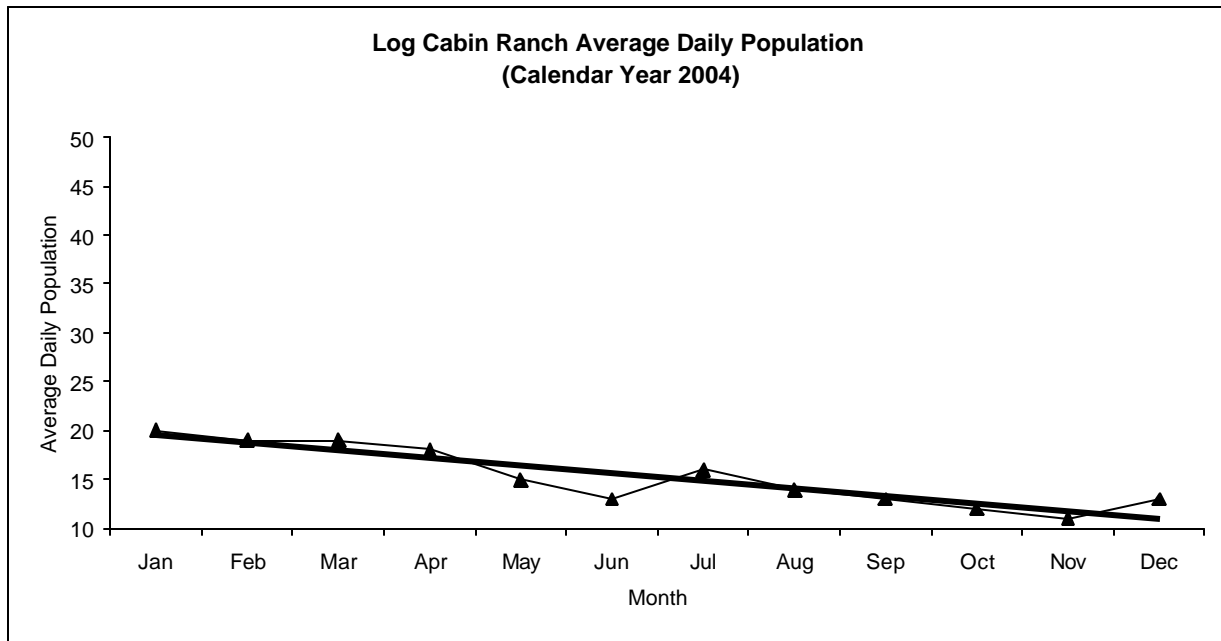
Log Cabin Ranch

Admissions and Average Daily Population (Calendar Year 2004)

Admissions	Jan	Feb	Mar	Apr	May	Jun	Jul	Aug	Sep	Oct	Nov	Dec	Total
2004	2	3	1	2	2	3	3	1	2	0	2	1	22



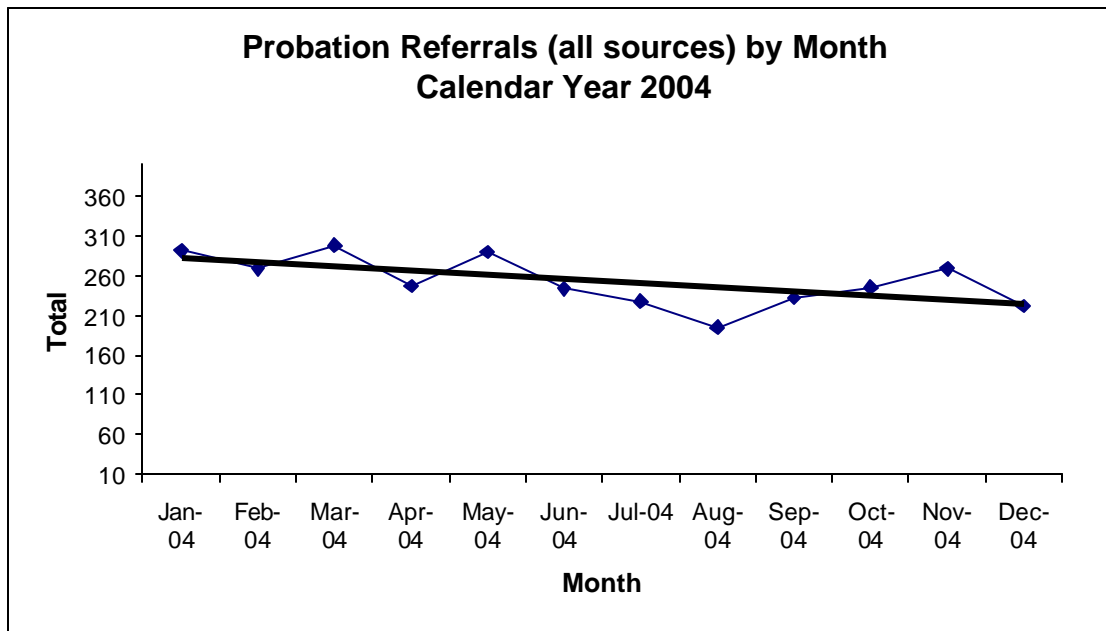
Avg. Daily Pop.	Jan	Feb	Mar	Apr	May	Jun	Jul	Aug	Sep	Oct	Nov	Dec	Total
2004	20	19	19	18	15	13	16	14	13	12	11	13	15.25



Probation Referrals by Month Calendar Year 2004

Probation Referrals (all sources) by Month (602 W&I)

Jan-04	291
Feb-04	268
Mar-04	298
Apr-04	247
May-04	289
Jun-04	243
Jul-04	227
Aug-04	195
Sep-04	232
Oct-04	245
Nov-04	269
Dec-04	222



SAN FRANCISCO JUVENILE PROBATION DEPARTMENT
MONTHLY INCIDENT REPORT FORM
MONTH/YEAR: DECEMBER 2004

Log Cabin Ranch	Battery on Staff	Injury to Staff due to Restraint of Minor	Fight	Battery Youth on Youth	Attempted Escape	AWOL	Attempted Suicide	Serious Contraband (Weapon Illegal Drug)
	0	0	0	0	0	0	0	0
	Battery on Staff with Injury	Fire	Fight with Injury	Battery Youth on Youth with Injury	Escape	Death	Suicide	Major Property Destruction
0	0	0	0	0	0	0	0	0
Juvenile Hall	Battery on Staff	Injury to Staff due to Restraint of Minor	Fight	Battery Youth on Youth	Attempted Escape	AWOL	Attempted Suicide	Serious Contraband (Weapon Illegal Drug)
	1	0	4	0	0	0	1	2
	Battery on Staff with Injury	Fire	Fight with Injury	Battery Youth on Youth with Injury	Escape	Death	Suicide	Major Property Destruction
0	0	3	1	0	0	0	0	0

Grievances Filed December 2004

San Francisco Juvenile Probation Department

Juvenile Hall



*Grievances Filed December 2004
San Francisco Probation Department
From the office of the Ombudsman.*

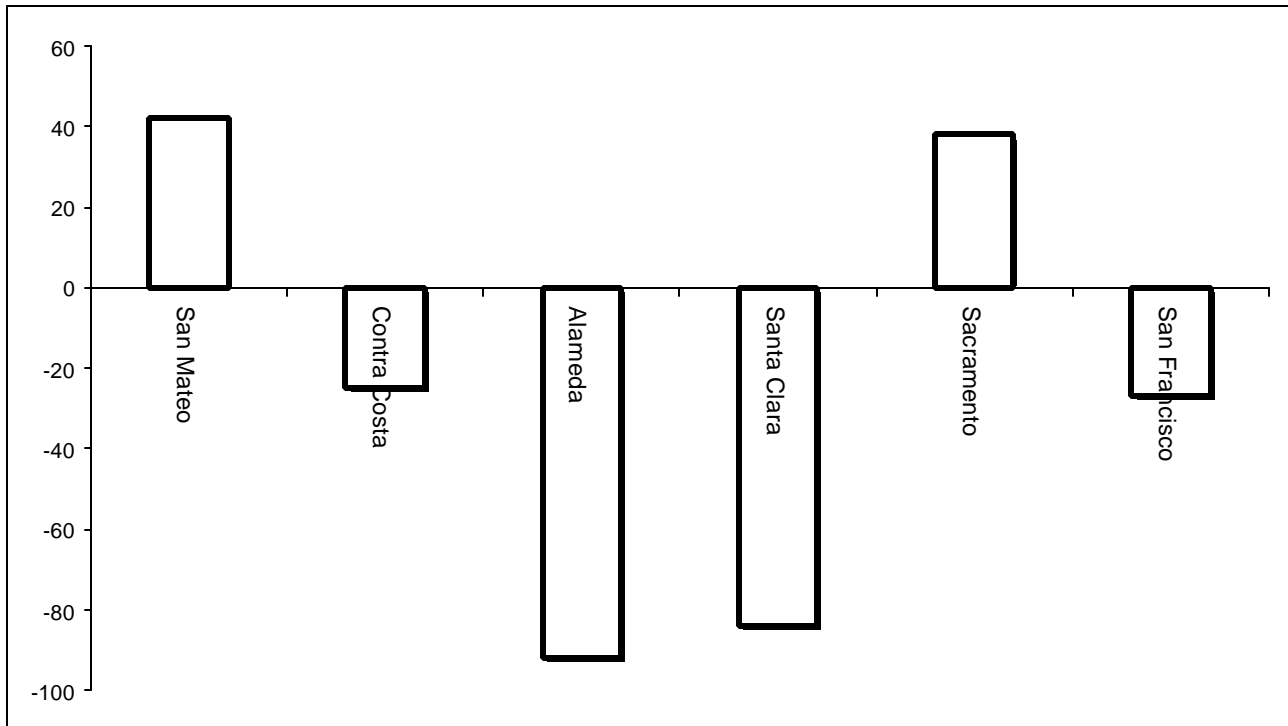
<i>Area of Infraction</i>	<i>Title 15 Article/Section</i>	<i>B1</i>	<i>B2</i>	<i>GU/B3</i>	<i>B4</i>	<i>B5</i>	<i>TOTAL</i>
<i>Visiting</i>	<i>1374</i>	<i>0</i>	<i>0</i>	<i>0</i>	<i>0</i>	<i>1</i>	<i>1</i>
<i>Requests for Health Care Services</i>	<i>7.1391</i>	<i>1</i>	<i>0</i>	<i>0</i>	<i>0</i>	<i>0</i>	<i>1</i>
<i>Juvenile Rights</i>	<i>12.2</i>	<i>0</i>	<i>1</i>	<i>0</i>	<i>0</i>	<i>0</i>	<i>1</i>
<i>Use of Force</i>	<i>1357.0</i>	<i>0</i>	<i>0</i>	<i>1</i>	<i>0</i>	<i>0</i>	<i>1</i>
Total		1	1	1	0	1	4

Log Cabin Ranch

Type	Log Cabin Ranch
Food/Snacks	0
Laundry	0
Personal Property	0
Phone Calls	0
Procedures	0
Head Call	0
Discipline	0
Complaints vs. Staff	0
Cottage Change	0
Medical	0
School	0
Probation	0
Miscellaneous	0
Total	0

Bay Area Resident Juvenile Hall Comparison Over/Under Capacity

on January 1st, 2005

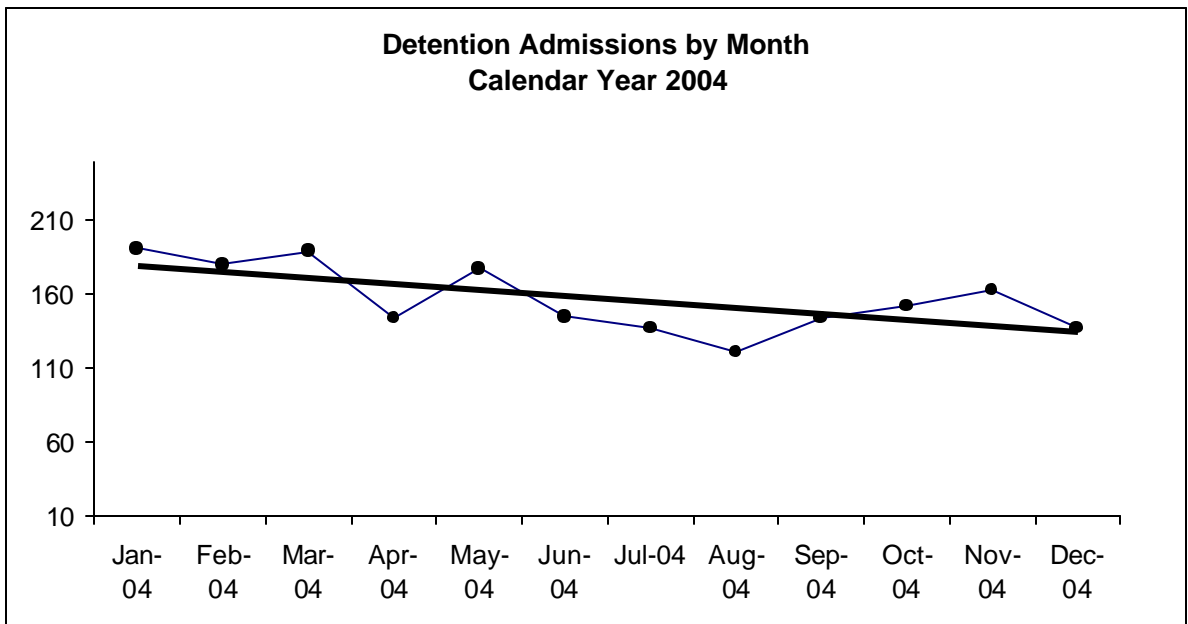


	Rated Capacity	Actual	Over/Under Capacity
San Mateo	130	172	42
Contra Costa	160	135	-25
Alameda	288	196	-92
Santa Clara	329	245	-84
Sacramento	256	294	38
San Francisco	104	77	-27

Juvenile Hall Admissions by Month Calendar Year 2004

Detention Admissions by Month

Jan-04	191
Feb-04	180
Mar-04	189
Apr-04	144
May-04	177
Jun-04	145
Jul-04	137
Aug-04	121
Sep-04	144
Oct-04	152
Nov-04	163
Dec-04	137

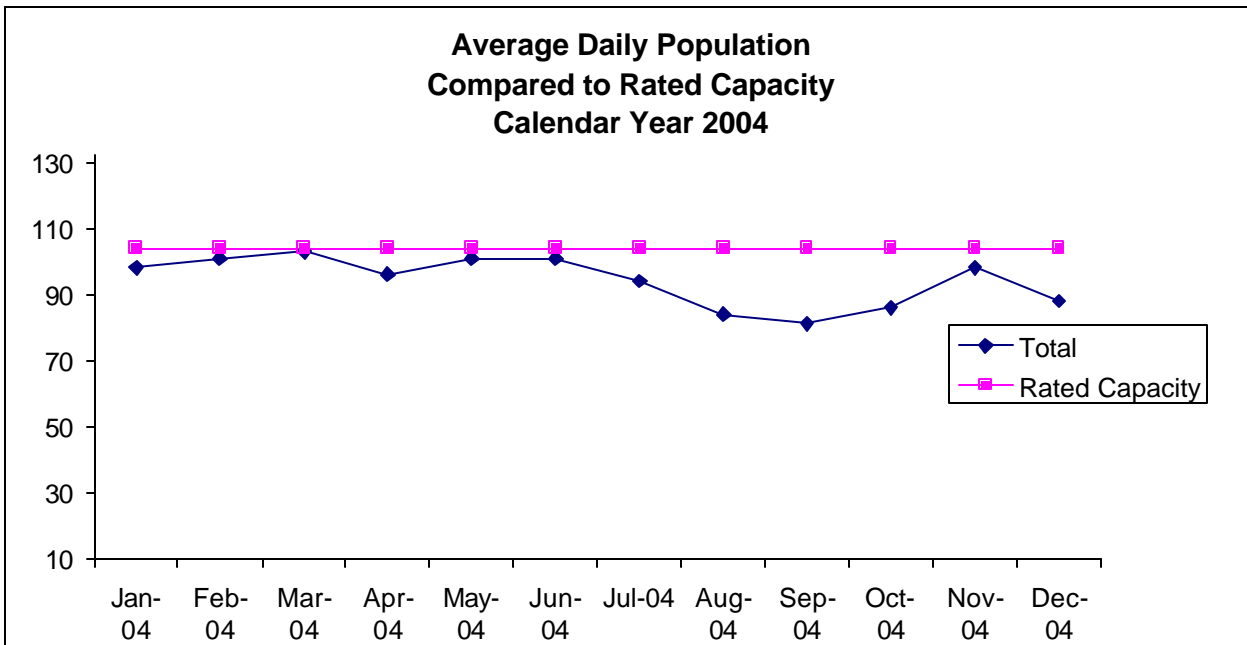


**Characteristics of Juvenile Hall Detainees on December 31st, 2004
Using CJIS Code From the Department of Justice**

Detention Reason	Offense Code	MF	Count	%
ATTEMPTED MURDER:SECOND DEGREE ON PEACE OFFICER	664 /187 (A) PC	F	1	1.25%
LEWD OR LASCIVIOUS ACTS W/CHILD UNDER 14 YEARS	288 (A) PC	F	2	2.50%
CARJACKING	215 (A) PC	F	1	1.25%
ARSON:INHABITED STRUCTURE/PROPERTY	451 (B) PC	F	4	5.00%
TRANSPORT/SELL NARCOTIC/CONTROLLED SUBSTANCE	11352 (A) HS	F	9	11.25%
POSSESS/PURCHASE COCAINE BASE FOR SALE	11351.5 HS	F	2	2.50%
ROBBERY:SECOND DEGREE	212.5(C) PC	F	13	16.25%
HAVE FIREARM AT PUBLIC/ETC SCHOOL	626.9(B) PC	F	1	1.25%
POSSESS/PURCHASE FOR SALE NARCOTIC/CONTROLLED SUBSTANCE	11351 HS	F	1	1.25%
ASSAULT:DEADLY WEAPON OR FORCE:POSSIBLE GREAT BODILY INJ	245 (A) PC	F	1	1.25%
FORCE OR ADW NOT FIREARM:GBI LIKELY	245 (A)(1) PC	F	2	2.50%
BATTERY ON CUSTODIAL OFFICER	243.1 PC	F	1	1.25%
POSSESS MARIJUANA FOR SALE	11359 HS	F	1	1.25%
POSSESS FIREARM W/ALTERED IDENTIFICATION	12091 PC	F	1	1.25%
CARRY CONCEALED WEAPON WHILE ENGAGED IN CRIMINAL STREET GANG	12025 (B) PC	F	1	1.25%
SODOMY W/PERSON UNDER 18 YEARS	286 (B)(1) PC	F	1	1.25%
THREATEN CRIME W/INTENT TO TERRORIZE	422 PC	F	1	1.25%
TAKE VEHICLE W/O OWNER'S CONSENT/VEHICLE THEFT	10851 (A) VC	F	3	3.75%
OBSTRUCT/RESIST/ETC PUBLIC/PEACE OFFICER/EMERGENCY MED TECH	148 (A)(1) PC	M	1	1.25%
BATTERY ON TRANSPORTATION PERSONNEL/PASSENGER	243.3 PC	M	1	1.25%
FORCE/ASSAULT WITH A DEADLY WEAPON-NOT FIREARM:GBI LIKELY	245 (A)(1) PC	M	1	1.25%
TAKE VEHICLE WITHOUT OWNER'S CONSENT	10851 (A) VC	M	1	1.25%
POSSESS/MANUFACTURE/SELL DANGEROUS WEAPONS/EXPLOSIVES/ETC	12020 (A) PC	M	1	1.25%
PETTY THEFT	484 (A) PC	M	1	1.25%
LOITER:INTENT:PROSTITUTION	653.22(A) PC	M	1	1.25%
FIGHT/CHALLENGE FIGHT AT SCHOOL/UNIVERSITY/ETC	415.5(A)(1) PC	M	1	1.25%
FAIL TO OBEY ORDER OF JUVENILE COURT 602 WI	777 (A)(2) WI	M	5	6.25%
VIOLATION(S) OF HOME SUPERVISION CONDITION	628.1 WI	M	1	1.25%
CHANGE OF PLACEMENT/PLACEMENT FAILURE	737 WI	M	1	1.25%
BENCH WARRANT	BENCH WARRANT		3	3.75%
ARREST WARRANT	WRNT602 XX		3	3.75%
COURT ORDER 602	CTORD 602		13	16.25%
	Total		80	100.00%

**Average Daily Population
By Rated Capacity
Calendar Year 2004**

	Total	Rated Capacity
Jan-04	98	104
Feb-04	101	104
Mar-04	103	104
Apr-04	96	104
May-04	101	104
Jun-04	101	104
Jul-04	94	104
Aug-04	84	104
Sep-04	81	104
Oct-04	86	104
Nov-04	98	104
Dec-04	88	104



Juvenile Hall Average Length of Stay

For the Month of December 2004

¹Released

Range of Days	<i>1-10 days</i>	<i>11-20 days</i>	<i>21-30 days</i>	<i>30 or more days</i>	Total
# of Youth Released	74	22	17	31	144
% of Population	71.30%	8.70%	3.80%	16.30%	100%
# of Days	253	322	441	1981	2997
% of Total Days	8.44%	10.74%	14.71%	66.10%	100%
Average Length of Stay	3.42	14.64	25.94	63.90	20.81

²In Custody

Range of Days	<i>1-10 days</i>	<i>11-20 days</i>	<i>21-30 days</i>	<i>30 or more days</i>	Total
# of Youth Detained	19	23	12	26	80
% of Population	38.60%	18.10%	12.60%	30.70%	100%
# of Days	80	361	300	2802	3543
% of Total Days	2.26%	10.19%	8.47%	79.09%	100%
Average Length of Stay	4.21	15.70	25.00	107.77	44.29

Notes: Less than one day of stay is calculated as one day.

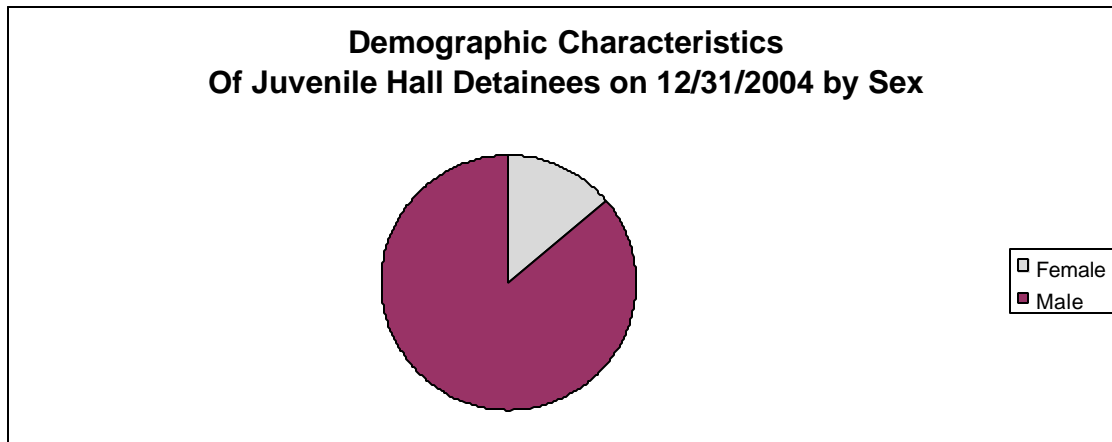
¹Length of stay is calculated according to release date for those who are released.

²For those still in custody, length of stay is calculated at the last day of the month.

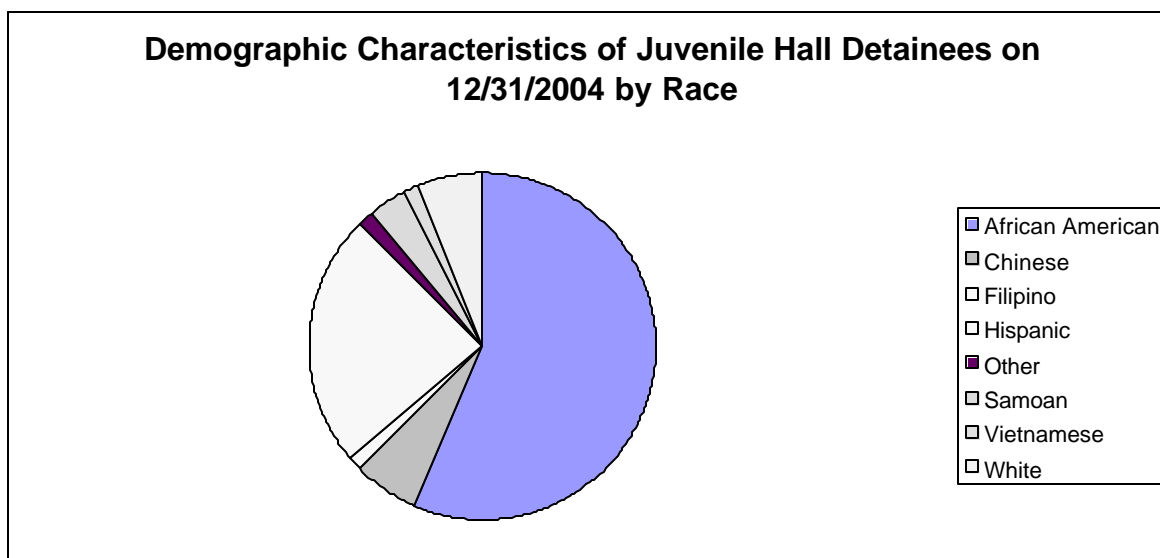
Section III

Demographics

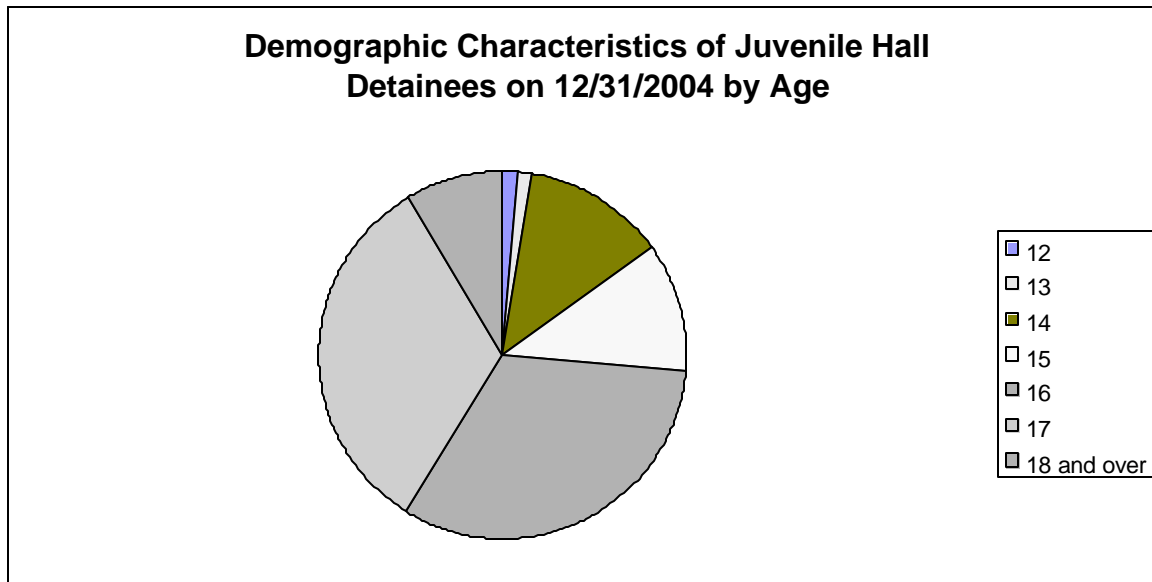
Sex	Frequency	Percent
Female	11	13.75%
Male	69	86.25%
Total	80	100.00%



Race/Ethnic Origin	Frequency	Percent
African American	45	56.25%
Chinese	5	6.25%
Filipino	1	1.25%
Hispanic	19	23.75%
Other	1	1.25%
Samoan	3	3.75%
Vietnamese	1	1.25%
White	5	6.25%
Total	80	100.00%

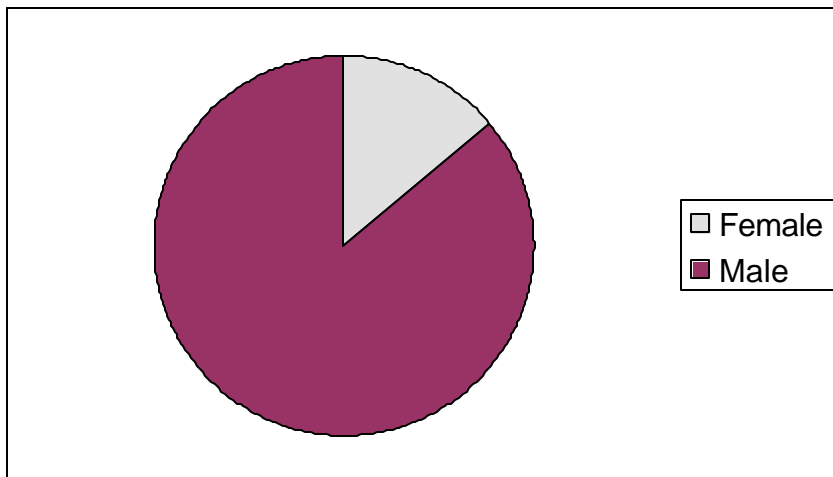


Age	Frequency	Percent
12	1	1.25%
13	1	1.25%
14	10	12.50%
15	9	11.25%
16	26	32.50%
17	26	32.50%
18 and over	7	8.75%
Total	80	100.00%



Demographic Characteristics of Juvenile Hall Detainees
on 12/31/2004
Age by Sex

Age	Female	Male	Total	
12	0	1	1	1.25%
13	0	1	1	1.25%
14	3	7	10	12.50%
15	1	8	9	11.25%
16	5	21	26	32.50%
17	2	24	26	32.50%
18 and over	0	7	7	8.75%
Total	11	69	80	100.00%
	13.75%	86.25%	100.00%	



Demographic Characteristics
Of Juvenile Hall Detainees on December 31st, 2004

Geographical Residence of Youth

	Count	%
Bayview	17	21.25%
Haight Ashbury/Castro	1	1.25%
Ingleside (West of Twin Peaks)	2	2.50%
Inner Mission	4	5.00%
Marina	2	2.50%
North of Market/Downtown	1	1.25%
Outer Mission	14	17.50%
Parkside	1	1.25%
Potrero	1	1.25%
Richmond	2	2.50%
South of Market/Tenderloin	2	2.50%
Sunset	1	1.25%
Treasure Island/Yerba Buena	1	1.25%
Western Addition	16	20.00%
Non-San Francisco and Unavailable ¹	15	18.75%
Total	80	100.00%

¹ Non-San Francisco and Unavailable	Count	%
ANTIOCH	1	6.67%
LAKEPORT	1	6.67%
OAKLAND	3	20.00%
PASO ROBLES	1	6.67%
SACRAMENTO	1	6.67%
SAN ANDREAS	1	6.67%
SAN LUIS OBISPO	1	6.67%
UNAVAILABLE	6	40.00%
Total	15	100.00%

Demographic Characteristics
Of Juvenile Hall Detainees on December 31st, 2004

Race/Ethnic Origin by Gender

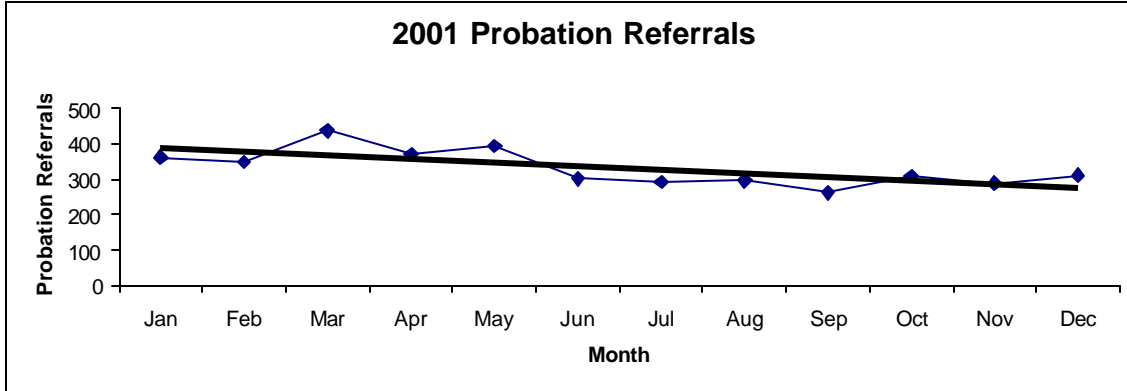
Count	SEX		Row Total	
	Female	Male		
RACE				
AFRICAN AMERICAN	8	37	45 56.3	
CHINESE		5	5 6.3	
FILIPINO		1	1 1.3	
HISPANIC	1	18	19 23.8	
OTHER		1	1 1.3	
SAMOAN		3	3 3.8	
VIETNAMESE		1	1 1.3	
WHITE	2	3	5 6.3	
Column Total	11 13.8	69 86.3	80 100.0	

Section IV

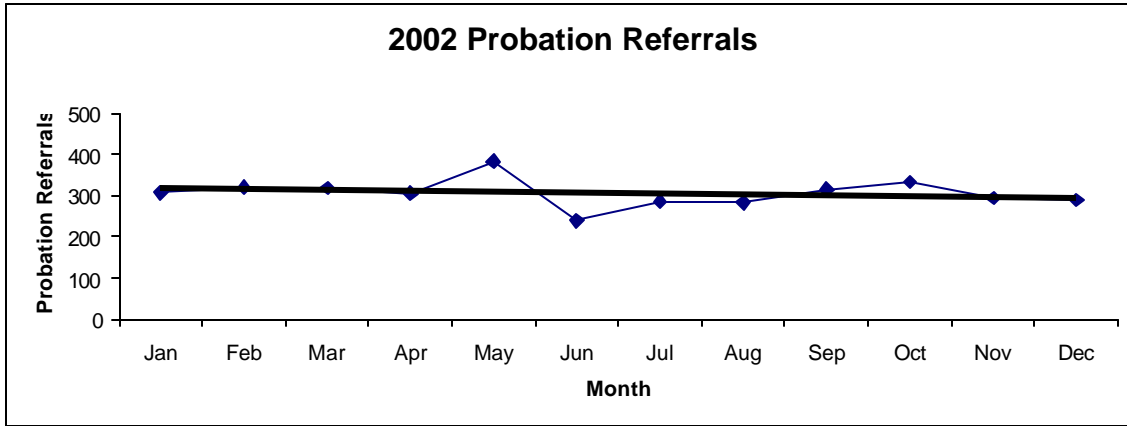
Historical Information

San Francisco Juvenile Probation
Probation Referrals (all sources) By Month
 (2001-2003)

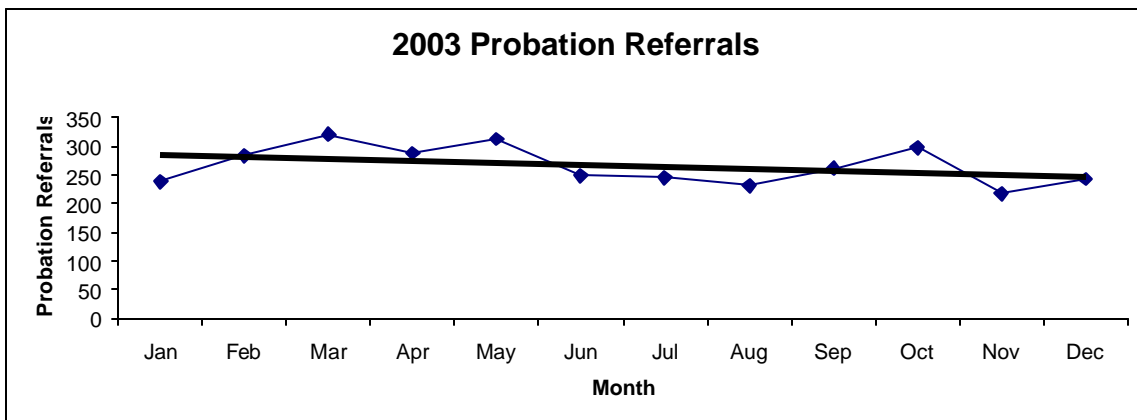
2001 Probation Referrals	Jan	Feb	Mar	Apr	May	Jun	Jul	Aug	Sep	Oct	Nov	Dec	Total
	361	348	437	370	394	301	292	296	262	309	287	311	3968



2002 Probation Referrals	Jan	Feb	Mar	Apr	May	Jun	Jul	Aug	Sep	Oct	Nov	Dec	Total
	308	320	318	305	384	240	286	283	315	333	294	289	3675

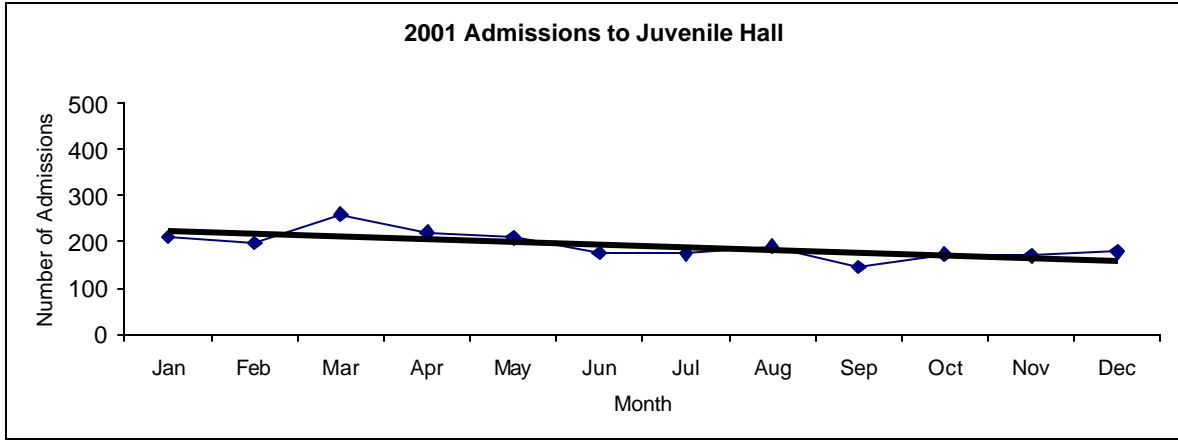


2003 Probation Referrals	Jan	Feb	Mar	Apr	May	Jun	Jul	Aug	Sep	Oct	Nov	Dec	Total
	238	283	320	288	313	248	245	231	261	297	218	243	3185

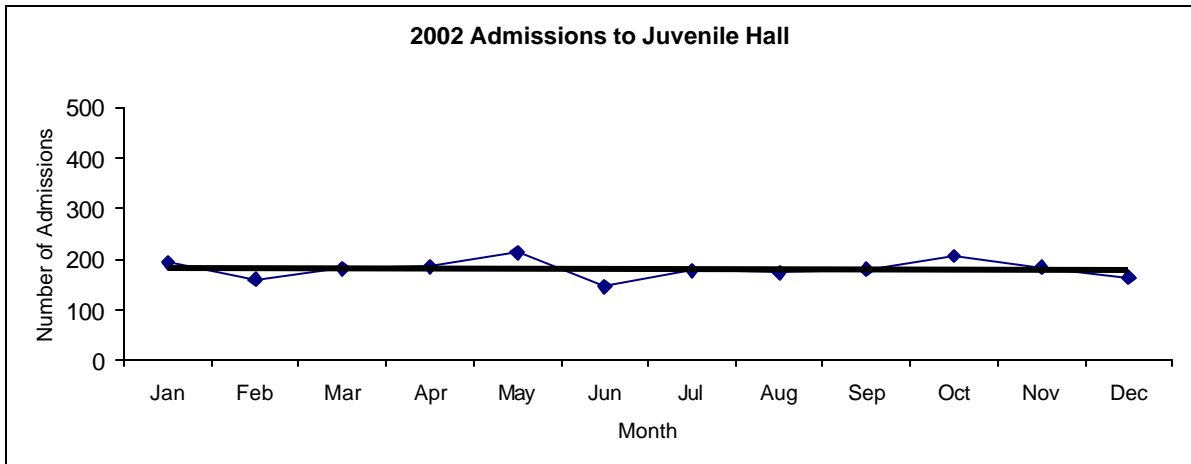


San Francisco Juvenile Probation
Juvenile Hall Admissions By Month
 (Calendar Years 2001-2003)

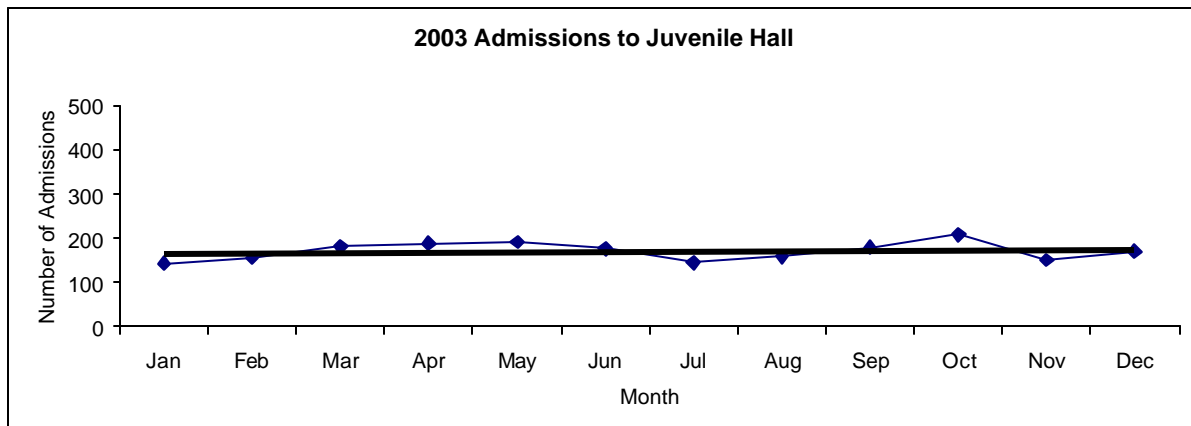
2001 Admissions	Jan	Feb	Mar	Apr	May	Jun	Jul	Aug	Sep	Oct	Nov	Dec	Total
	210	197	260	220	209	176	174	190	145	173	170	178	2302



2002 Admissions	Jan	Feb	Mar	Apr	May	Jun	Jul	Aug	Sep	Oct	Nov	Dec	Total
	193	160	181	185	213	145	177	173	179	206	183	164	2159

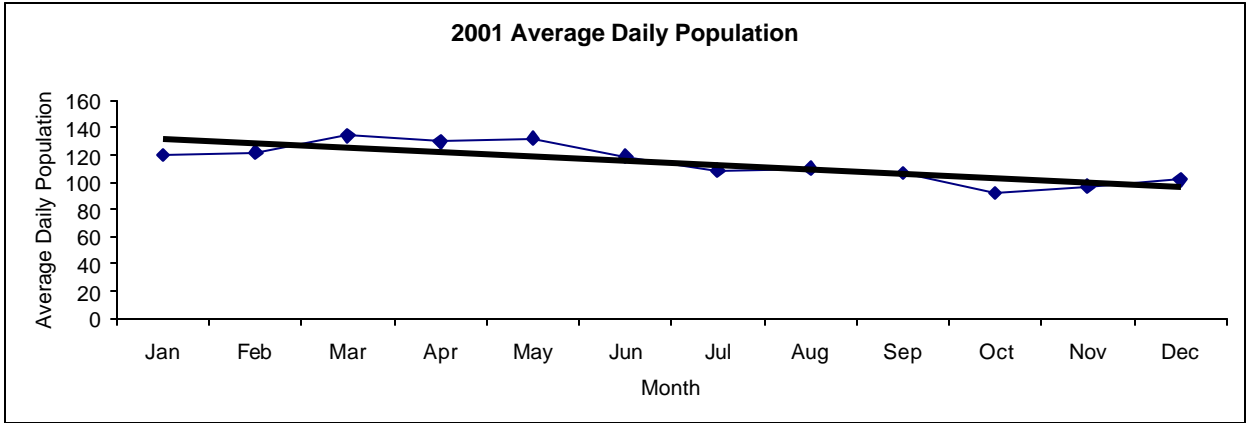


2003 Admissions	Jan	Feb	Mar	Apr	May	Jun	Jul	Aug	Sep	Oct	Nov	Dec	Total
	144	156	181	189	191	176	145	158	179	208	151	170	2048

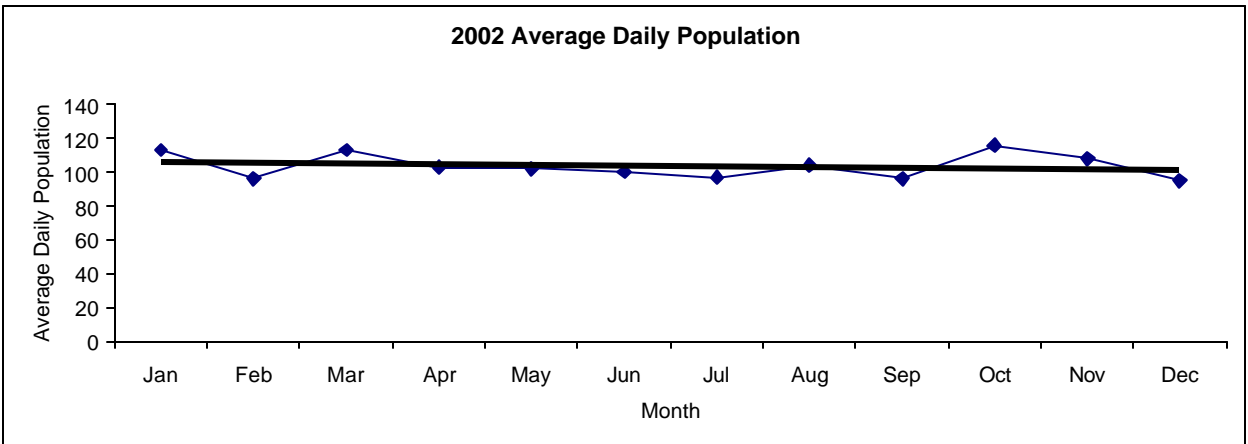


San Francisco Juvenile Probation
Juvenile Hall Average Daily Population By Month
 (Calendar Years 2001-2003)

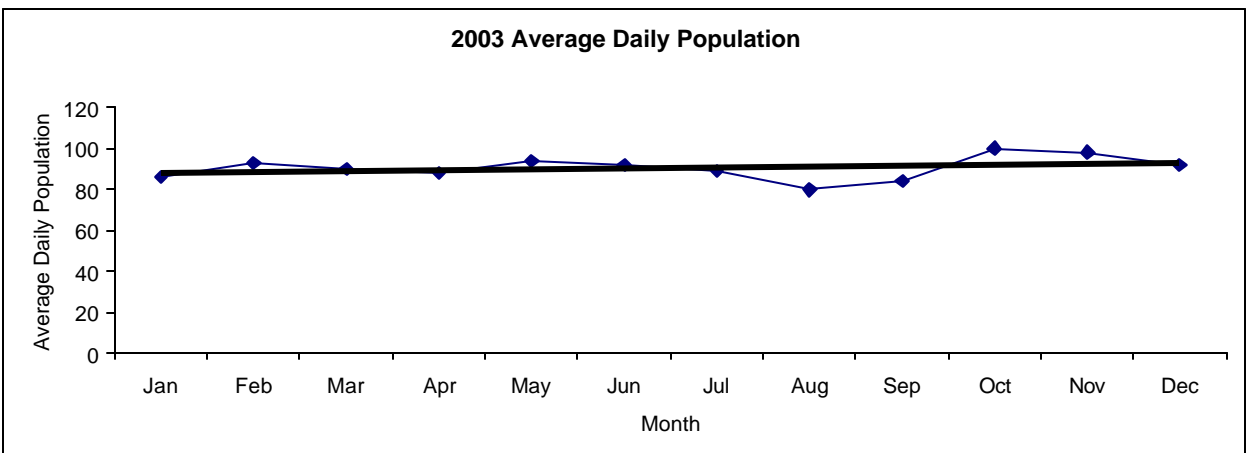
2001 Avg. Daily Pop.	Jan	Feb	Mar	Apr	May	Jun	Jul	Aug	Sep	Oct	Nov	Dec	Total
	120	122	134	130	132	119	109	110	107	92	97	102	115



2002 Avg. Daily Pop.	Jan	Feb	Mar	Apr	May	Jun	Jul	Aug	Sep	Oct	Nov	Dec	Total
	113	96	113	103	102	100	97	104	96	116	108	95	104

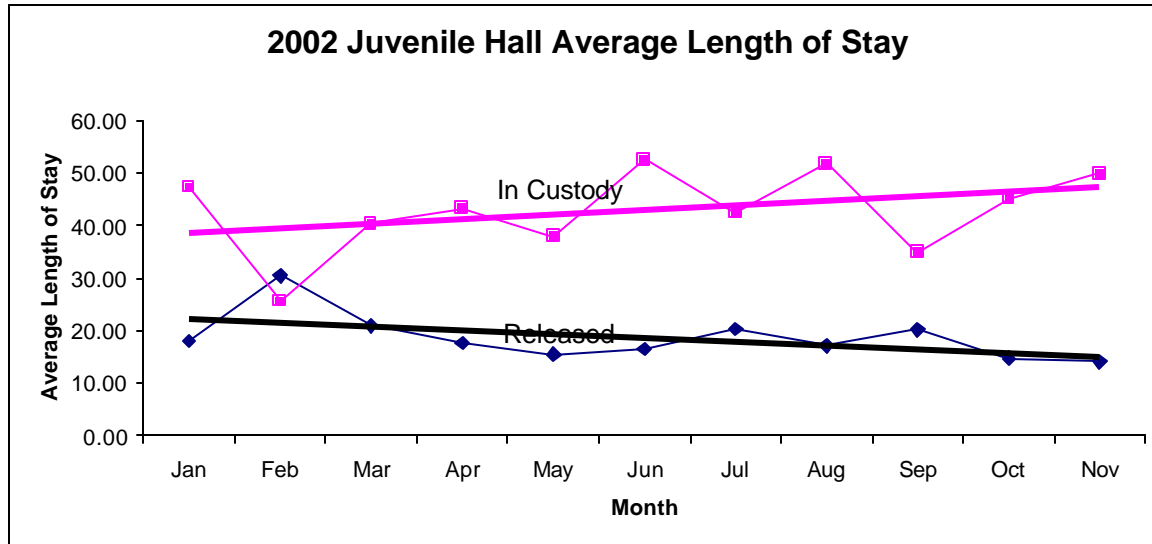


2003 Avg. Daily Pop.	Jan	Feb	Mar	Apr	May	Jun	Jul	Aug	Sep	Oct	Nov	Dec	Total
	86	93	90	88	94	92	89	80	84	100	98	92	91

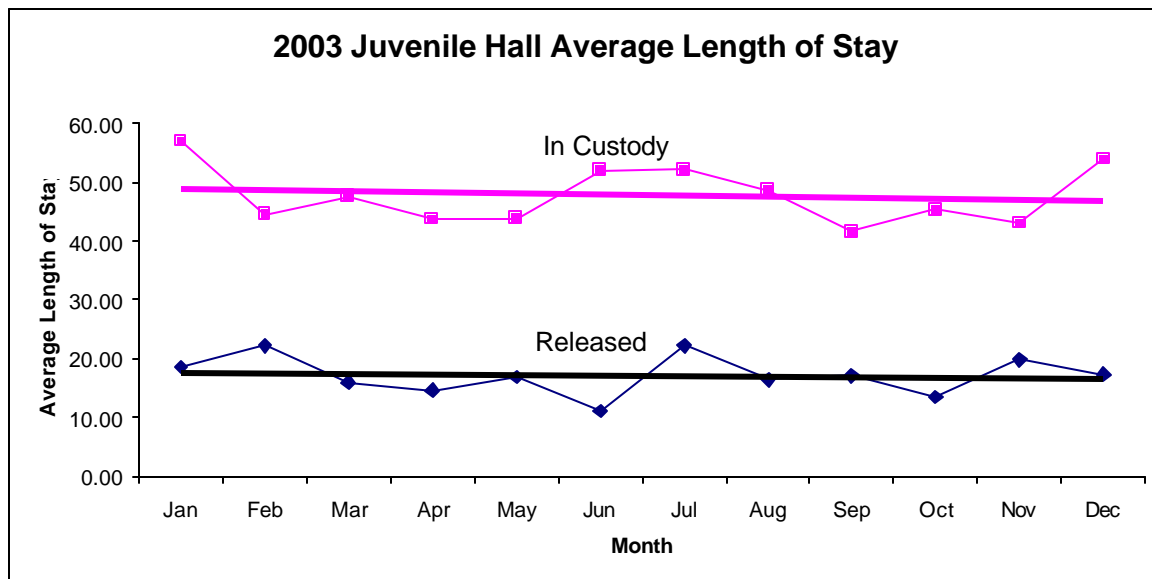


San Francisco Juvenile Probation
Juvenile Hall Average Length of Stay By Month
 (Calendar Years 2002-2003)

2002 Avg. Length of Stay	Jan	Feb	Mar	Apr	May	Jun	Jul	Aug	Sep	Oct	Nov	Dec	Total
¹ Released	18.05	30.44	20.88	17.65	15.50	16.45	20.22	17.15	20.16	14.67	14.03	18.30	18.63
² In Custody	47.30	25.63	40.35	43.29	37.86	52.57	42.41	51.77	34.82	45.11	49.85	58.85	44.15



2003 Avg. Length of Stay	Jan	Feb	Mar	Apr	May	Jun	Jul	Aug	Sep	Oct	Nov	Dec	Total
¹ Released	18.58	22.16	15.97	14.65	16.86	11.07	22.21	16.41	17.13	13.51	19.87	17.30	17.14
² In Custody	56.97	44.53	47.63	43.78	43.80	51.98	52.13	48.67	41.61	45.30	43.04	53.96	47.78



Notes: Less than one day of stay is calculated as one day.

¹ Length of stay is calculated according to release date for those who are released.

² For those still in custody, length of stay is calculated at the last day of the month.