

City and County of San Francisco



Juvenile Probation Department

Monthly Report for January 2005

Presented to the Juvenile Probation Commission

February 23rd, 2005

Table of Contents

Section I Summary Reports

Juvenile Hall, Log Cabin Ranch Summary Statistics.....	1
Community Programs Summary Statistics	2
Probation Services Summary Statistics.....	4

Section II Current Month General Detail

Probation Referrals, Juvenile Admissions And Average Daily Population	6
Juvenile Hall Admissions and Average Daily Population.....	7
Commitments to out-of-home placement.....	8
Commitments to California Youth Authority.....	9
Log Cabin Ranch Admissions and Average Daily Population.....	10
Probation Referrals	11
Juvenile Hall And Log Cabin Ranch Incident Report	12
Juvenile Hall And Log Cabin Ranch Grievances Report.....	13
Bay Area Resident Juvenile Hall Comparison	14
Juvenile Hall Admissions.....	15
Juvenile Hall Detainees by Detention Reason.....	16
Juvenile Hall Average Daily Population by Rated Capacity.....	17
Juvenile Hall Average Length of Stay.....	18

Section III Demographics

Juvenile Hall Detainees by Sex and Race/Ethnic Origin.....	19
Juvenile Hall Detainees by Age	20
Juvenile Hall Detainees by Age and Sex.....	21
Juvenile Hall Detainees by Geographic Residence of Youth.....	22
Juvenile Hall Detainees by Race/Ethnic Origin and Sex.....	23

Section IV
Historical Information

2002-2004 Probation Referrals24
2002-2004 Juvenile Hall Admissions25
2002-2004 Juvenile Hall Average Daily Population.....26
2003-2004 Juvenile Hall Average Length of Stay by Month.....27



Section I

Summary Reports

Summary Report for the Month of January 2005

Juvenile Hall	<i>December 2003</i>	<i>December 2004</i>	<i>January 2004</i>	<i>January 2005</i>	<i>YTD 2004</i>	<i>YTD 2005</i>
Admissions	170	137	191	168	191	168
Average Daily Population	92	88	98	98	98	98
Average Length of Stay (Releases)	17.30	20.81	14.04	15.07	14.04	15.07
Average Length of Stay (In Custody)	53.96	44.29	52.35	41.54	52.35	41.54
Releases	185	144	181	136	181	136
Log Cabin Ranch						
Admissions:						
First Time Commitments	3	1	2	2	1	2
Recommitments	0	0	0	0	0	0
<i>Total</i>	3	1	2	2	1	2
Releases:						
Graduated	5	0	2	3	2	3
Escape	0	0	0	0	0	0
Other releases	1	1	0	0	0	0
<i>Total</i>	6	1	2	3	2	3
Average Daily Population	18	13	20	13	20	13
Grievances Filed						
Juvenile Hall:						
B1	*	1	1	0	1	0
B2	*	1	6	4	6	4
B3	*	1	0	0	0	0
B4	*	0	0	0	0	0
B5	*	1	2	9	2	9
G2 (CO-ED)	*	0	2	0	2	0
<i>Total</i>	*	4	11	13	11	13
Log Cabin Ranch	0	0	0	0	0	0
Incident Reports						
Juvenile Hall	10	12	13	9	13	9
Log Cabin Ranch	2	0	0	0	0	0
<i>Total</i>	12	12	13	9	13	9

*Data not available

**as of October 2003

Summary Report for the Month of January 2005

Community Programs	<i>Program Vacancies by Agency on January 2005</i>	<i>Active in program December 2003</i>	<i>Active in Program December 2004</i>	<i>Active in Program January 2004</i>	<i>Active in Program January 2005</i>
IHBS Monthly Client Count					
BayView Hunters Point Foundation	2	16	13	13	13
Chinatown Youth Center	2	10	13	13	13
Morrisania West, Inc.	3	11	12	12	12
Samoan Community Development Center	13	9	2	9	2
Potrero Hill Neighborhood House	6	7	9	7	9
Instituto Familiar de La Raza	8	22	22	22	22
Vietnamese Youth Development Center	0	7	7	7	7
Brothers Against Guns	0	16	30	11	30
<i>Total</i>	34	98	108	94	108
<i>January 2005 Percent Program Utilization</i>	80%				
<i>January 2005 Percent Change from last report</i>	0%				

Summary Report for TANF and Girls Programs
***Data was not available from Community Programs Division**

PROGRAM	ANNUAL GOAL	NUMBER SERVED
California Community Dispute Services: Youth Accountability Boards	45	*
CARECEN: Tattoo Removal and Case Management	45	*
Center for Young Women's Development: Girls Services	40	*
Community Works – Girls Diversion Program	24	*
Community Works – Girls Therapeutic Arts Curriculum in Juvenile Hall	100	*
Community Works – ROOTS Support for Children of Incarcerated Parents	40	*
Edgewood Kinship Support Network	30	*
Family Restoration House: Life Skills	30	*
Girls 2000: Girls Services and Family Support Services	20	*
Instituto Familiar de la Raza – Case Management	14	*
Mission Neighborhood Center: Young Queens on the Rise – Girls Services	35	*
Performing Arts Workshop: Arts Education at Impact High School	30	*
SAGE: Girls Services	35	*
Samoan Community Development Center: Anger Management	75	*
Special Services for Groups – Occupational Therapy Training Program	50	*
United Way/Girls Justice Initiative: Detention-based Case Management & Inside Mentoring Program	300 72	* *
Urban Services YMCA: Bayview Beacon Truancy Support	50	*
YGCIC GED & Focus Vocational Programs	105	*
YWCA – CITS and FITS Girls Mentorship	64	*

Summary Report for the Month of January 2005

Probation Services	<i>December 2004</i>	<i>January 2005</i>	<i>Year To Date 2005</i>
Probation Referrals	222	226	226
Petitions	100	129	129
Selected Court Dispositions:			
California Youth Authority	0	0	0
Log Cabin Ranch	3	0	0
Out of Home Placement	16	10	10
Other Probation	30	23	23
Violation of Probation Petitions Filed	16	22	22
California Youth Authority Monthly Count			
Institutions:			
Males	37	35	
Females	3	2	
Total	40	37	
Parole:			
Males	29	29	
Females	2	3	
Total	31	32	

Summary Report for the Month of January 2005

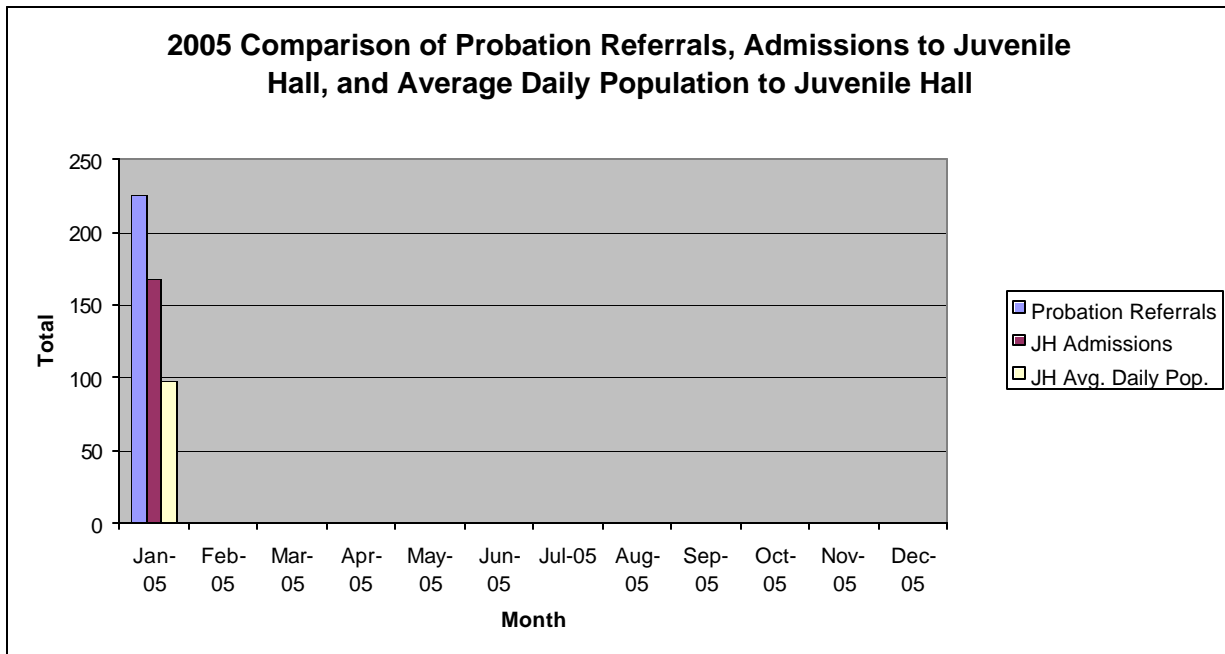
Probation Services			
Caseload List	December 2004	January 2005	January Average # Youth by PO
CARC	*	169	169.00
Custody Screening Investigation	*	177	22.13
Probation Services 1	*	302	25.17
Probation Services 2	*	137	12.45
Probation Services 3	*	164	20.50
Probation Services 4	*	254	25.40
YTEC	*	30	30.00
<i>Total</i>	*	1233	43.52
Special Services Unit	New	Closed	Active at end of Month
Record Sealings	4	10	164
Stepparent Adoptions	0	1	55
Terminations	0	0	12
Marriage Consents	0	0	3
Custody Evaluations	0	0	0
	Entered	Completed	Active at end of Month
Community Service	17	9	1229
		Referred	Completed at end of Month
COPS		0	0
Street Law (next class 2/19/05)		0	0
Theft Awareness		24	18
Anger Management for boys (still in session)		16	0
Anger Management for girls (still in session)		7	0
Life Management Skills		3	3
Kids Turn Non-Violent Family Skills (in session)		17	10
Information, Record Checks, Research & Photo Copying Juvenile Records For:	December 2004	January 2005	Year to Date 2005
Job Corps, Probation Departments, Military, Law Enforcement, Misc., (letters, Memos, Forms, etc.)	105	117	117

*Data was not available due to Juvenile Probation Department reorganization.

Section II
Current Month
General Detail

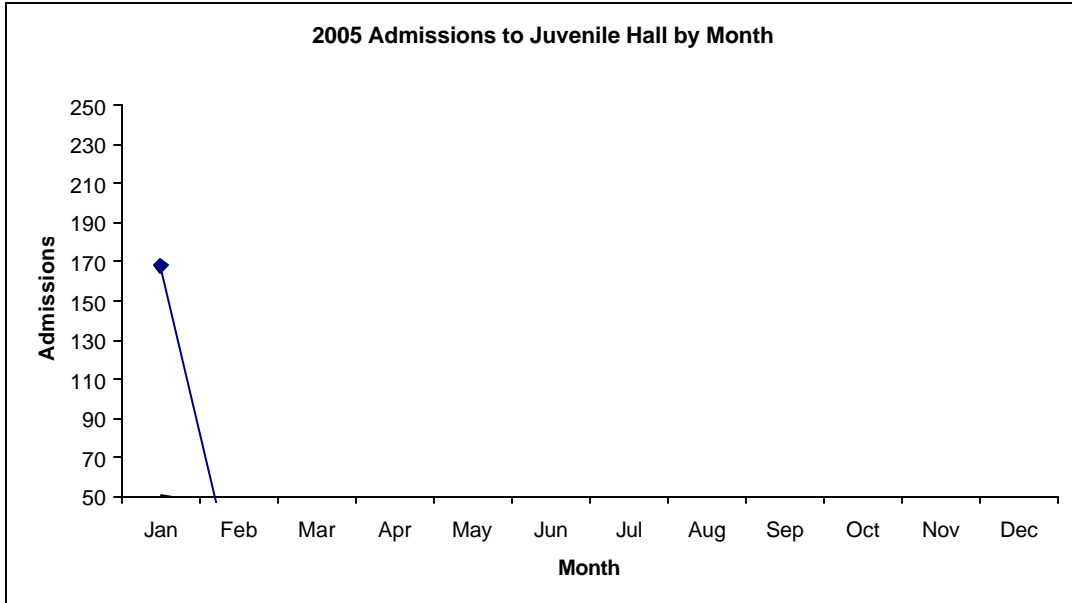
San Francisco Juvenile Probation

	Jan-05	Feb-05	Mar-05	Apr-05	May-05	Jun-05	Jul-05	Aug-05	Sep-05	Oct-05	Nov-05	Dec-05
Probation Referrals	226											
JH Admissions	168											
JH Avg. Daily Pop.	98											

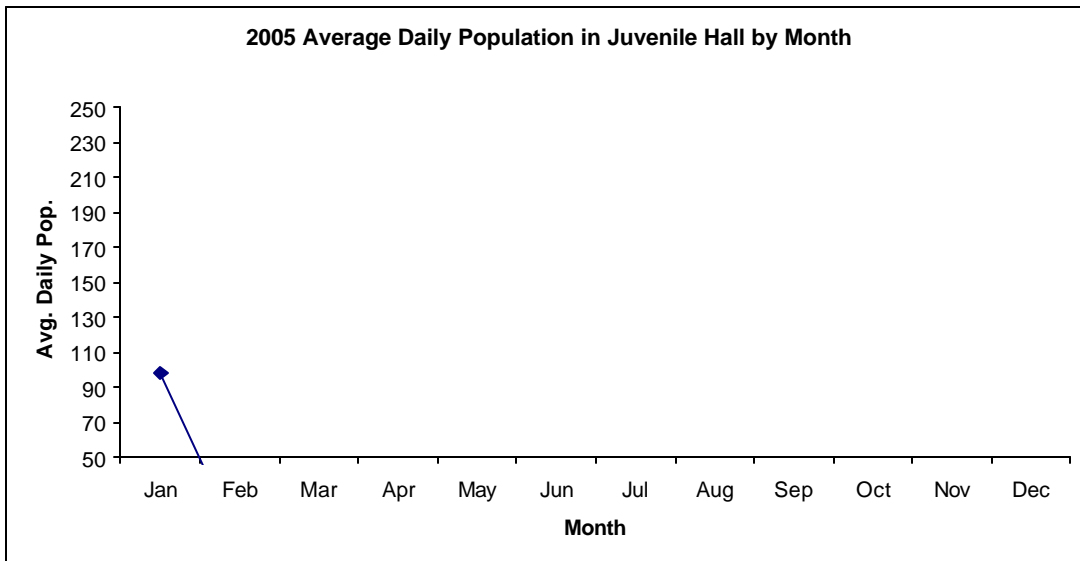


Admissions and Average Daily Population In Juvenile Hall (Calendar Year 2005)

Admissions	Jan	Feb	Mar	Apr	May	Jun	Jul	Aug	Sep	Oct	Nov	Dec	Total
2005	168												168



Avg. Daily Pop.	Jan	Feb	Mar	Apr	May	Jun	Jul	Aug	Sep	Oct	Nov	Dec	Total
2005	98												98

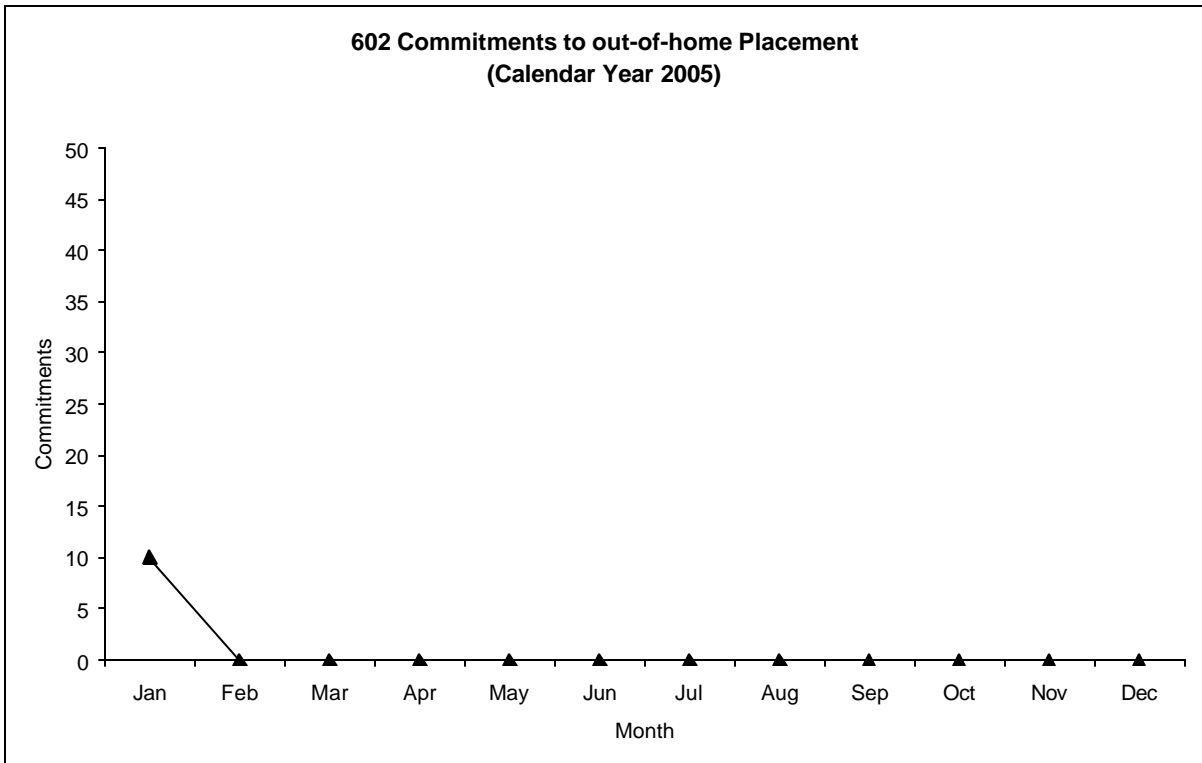


Out-of-Home Placement¹

Commitments of 602's

Calendar Year 2005

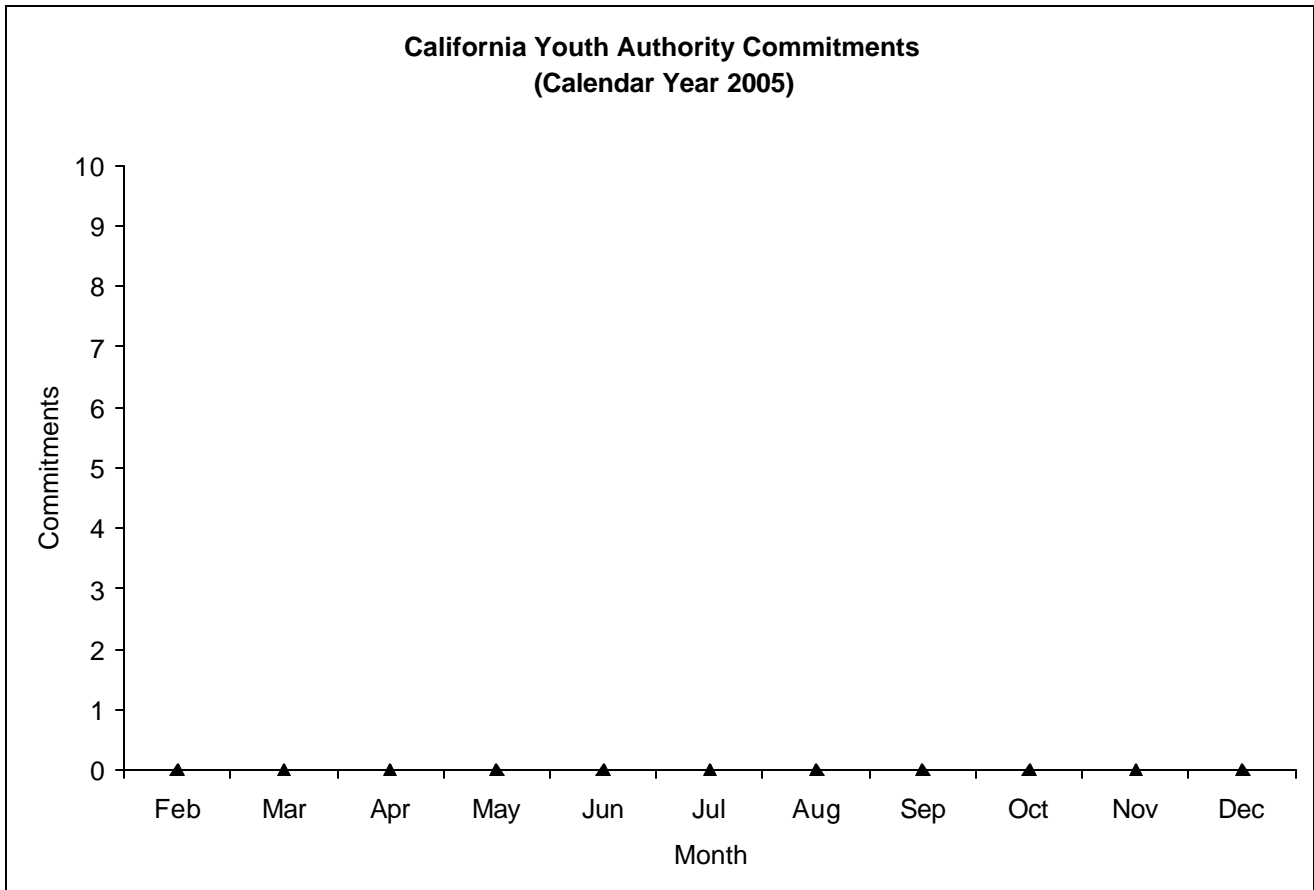
Commitments	Jan	Feb	Mar	Apr	May	Jun	Jul	Aug	Sep	Oct	Nov	Dec	Total
2005	10												10



¹ This report is based on 602 Commitments to out-of-home placements. If there is a 601 commitment, it will show as a footnote here. Figures are regularly updated to include reports from previous reporting periods.

California Youth Authority
Commitments
(Calendar Year 2005)

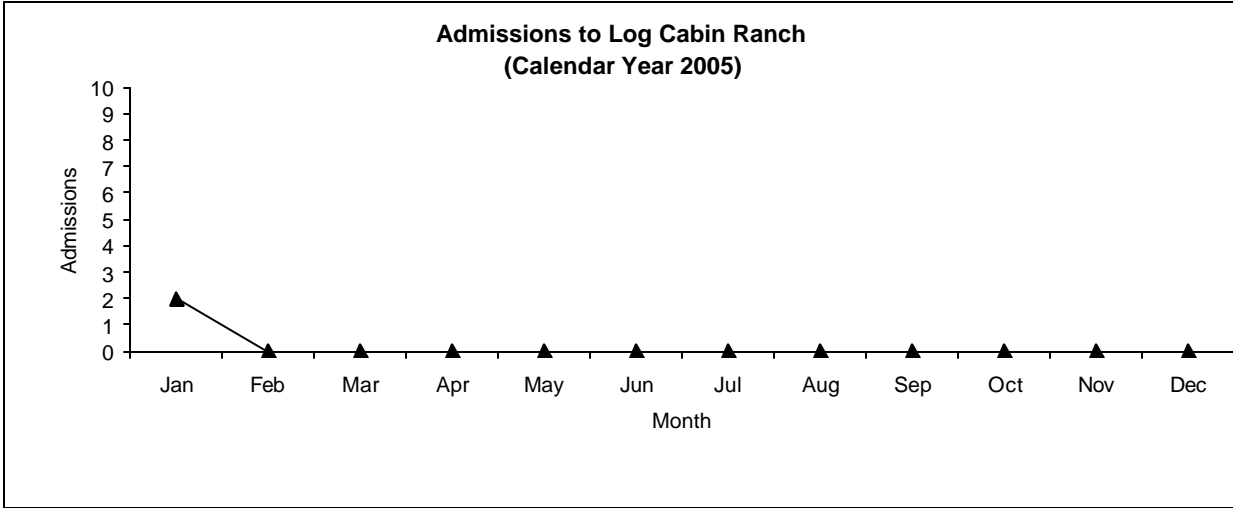
Commitments	Jan	Feb	Mar	Apr	May	Jun	Jul	Aug	Sep	Oct	Nov	Dec	Total
2005	0												0



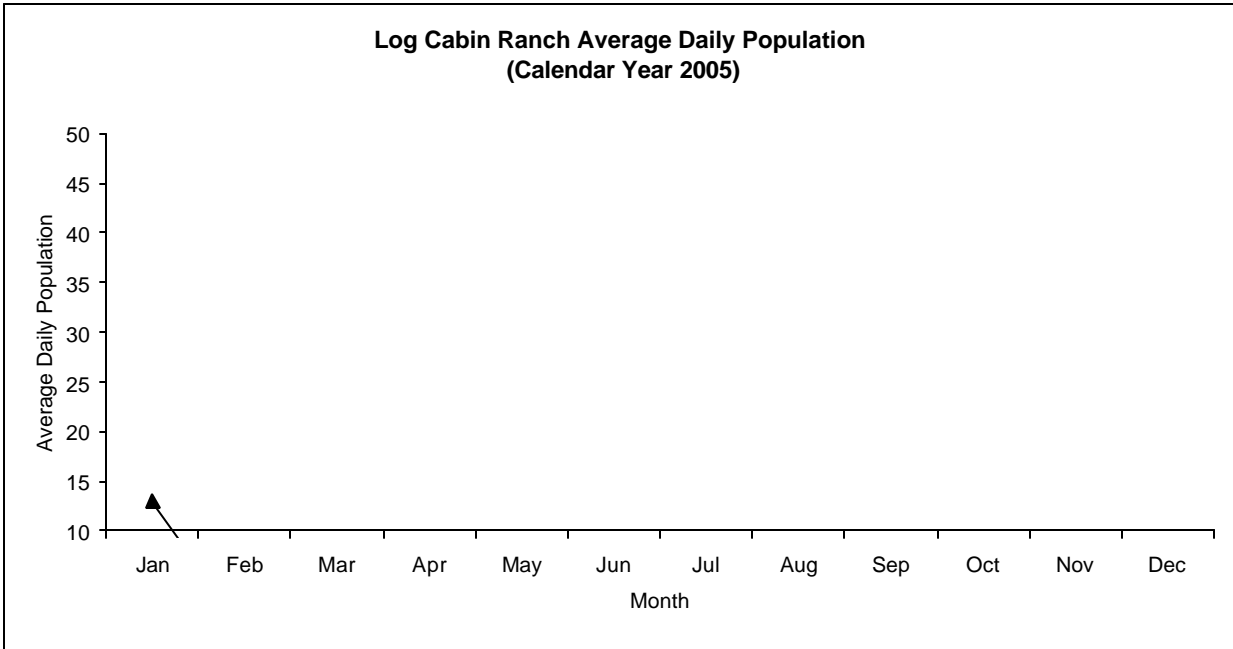
Log Cabin Ranch

Admissions and Average Daily Population (Calendar Year 2005)

Admissions	Jan	Feb	Mar	Apr	May	Jun	Jul	Aug	Sep	Oct	Nov	Dec	Total
2005	2												2



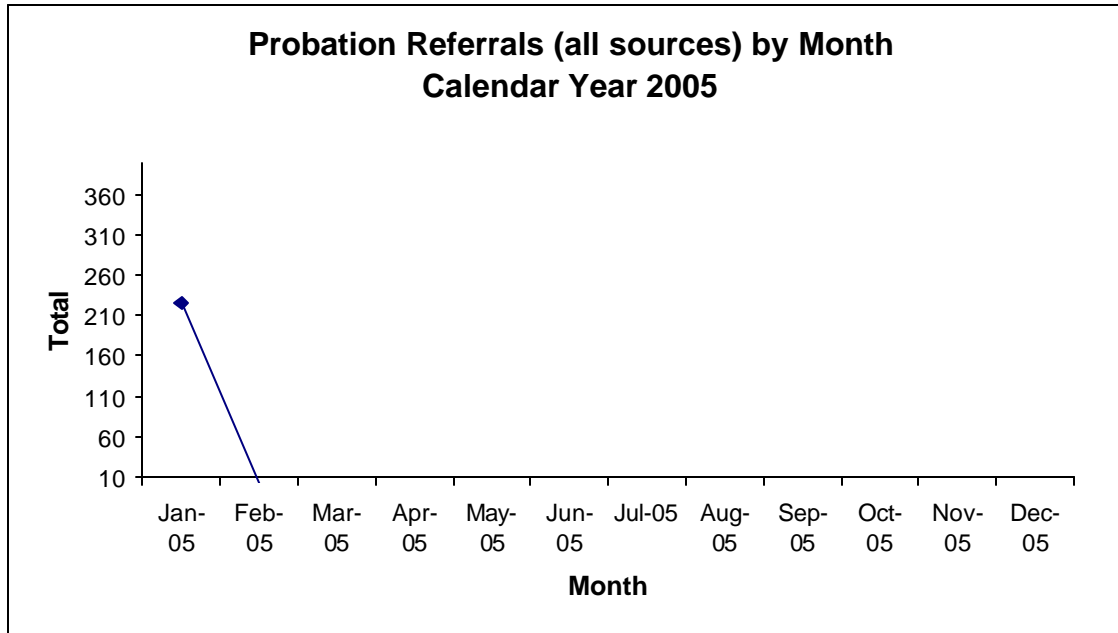
Avg. Daily Pop.	Jan	Feb	Mar	Apr	May	Jun	Jul	Aug	Sep	Oct	Nov	Dec	Total
2005	13												13.00



Probation Referrals by Month Calendar Year 2005

Probation Referrals (all sources) by Month (602 W&I)

Jan-05 226
Feb-05
Mar-05
Apr-05
May-05
Jun-05
Jul-05
Aug-05
Sep-05
Oct-05
Nov-05
Dec-05



SAN FRANCISCO JUVENILE PROBATION DEPARTMENT
 MONTHLY INCIDENT REPORT FORM
 MONTH/YEAR: JANUARY 2005

Log Cabin Ranch	Battery on Staff	Injury to Staff due to Restraint of Minor	Fight	Battery Youth on Youth	Attempted Escape	AWOL	Attempted Suicide	Serious Contraband (Weapon Illegal Drug)
	0	0	0	0	0	0	0	0
	Battery on Staff with Injury	Fire	Fight with Injury	Battery Youth on Youth with Injury	Escape	Death	Suicide	Major Property Destruction
0	0	0	0	0	0	0	0	0
Juvenile Hall	Battery on Staff	Injury to Staff due to Restraint of Minor	Fight	Battery Youth on Youth	Attempted Escape	AWOL	Attempted Suicide	Serious Contraband (Weapon Illegal Drug)
	2	0	3	1	0	0	1	0
	Battery on Staff with Injury	Fire	Fight with Injury	Battery Youth on Youth with Injury	Escape	Death	Suicide	Major Property Destruction
0	0	0	1	0	0	0	0	1

Grievances Filed January 2005

San Francisco Juvenile Probation Department

Juvenile Hall



**Grievances Filed January 2005
San Francisco Probation Department
From the office of the Ombudsman.**

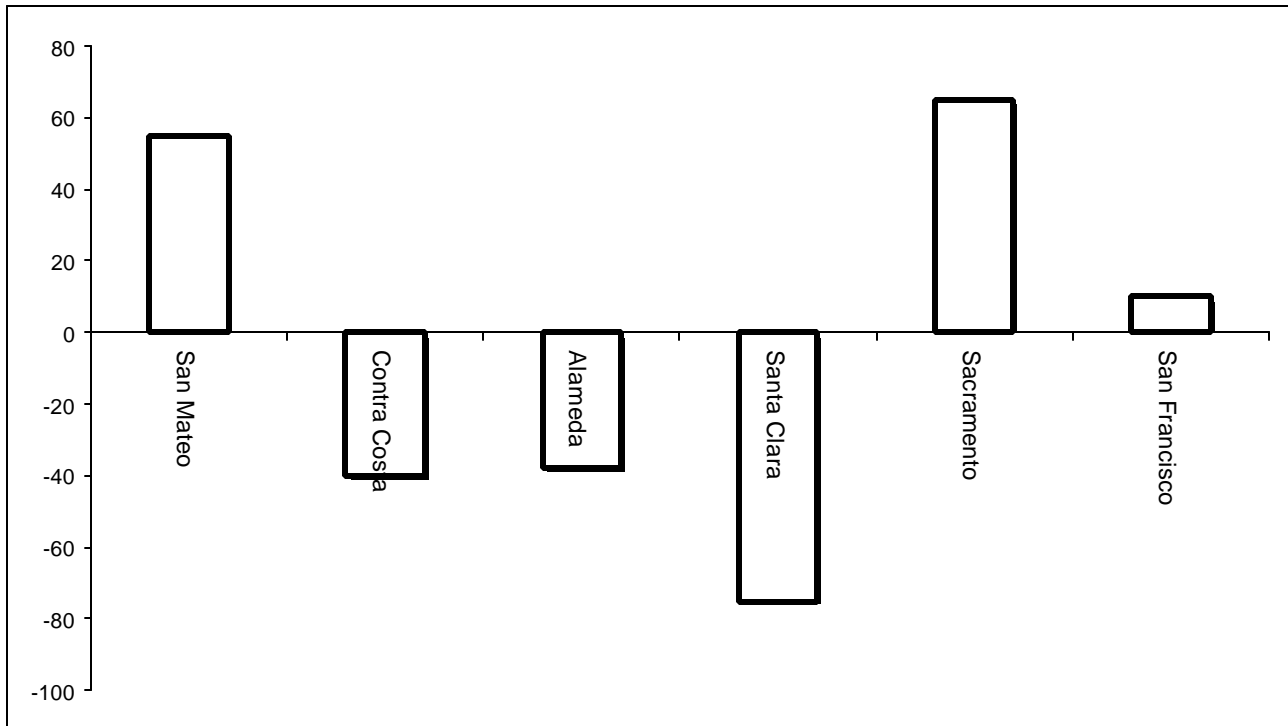
<i>Area of Infraction</i>	<i>Title 15 Article/Section</i>	<i>B1</i>	<i>B2</i>	<i>GU/B3</i>	<i>B4</i>	<i>B5</i>	<i>TOTAL</i>
<i>Clothing and Personal Hygiene</i>	<i>10.1486</i>	<i>0</i>	<i>0</i>	<i>0</i>	<i>0</i>	<i>9</i>	<i>9</i>
<i>Program and Activities</i>	<i>6.1371</i>	<i>0</i>	<i>3</i>	<i>0</i>	<i>0</i>	<i>0</i>	<i>3</i>
<i>Juvenile Rights</i>	<i>12.2</i>	<i>0</i>	<i>1</i>	<i>0</i>	<i>0</i>	<i>0</i>	<i>1</i>
<i>Total</i>		<i>0</i>	<i>4</i>	<i>0</i>	<i>0</i>	<i>9</i>	<i>13</i>

Log Cabin Ranch

Type	Log Cabin Ranch
Food/Snacks	0
Laundry	0
Personal Property	0
Phone Calls	0
Procedures	0
Head Call	0
Discipline	0
Complaints vs. Staff	0
Cottage Change	0
Medical	0
School	0
Probation	0
Miscellaneous	0
Total	0

Bay Area Resident Juvenile Hall Comparison Over/Under Capacity

on February 4th, 2005

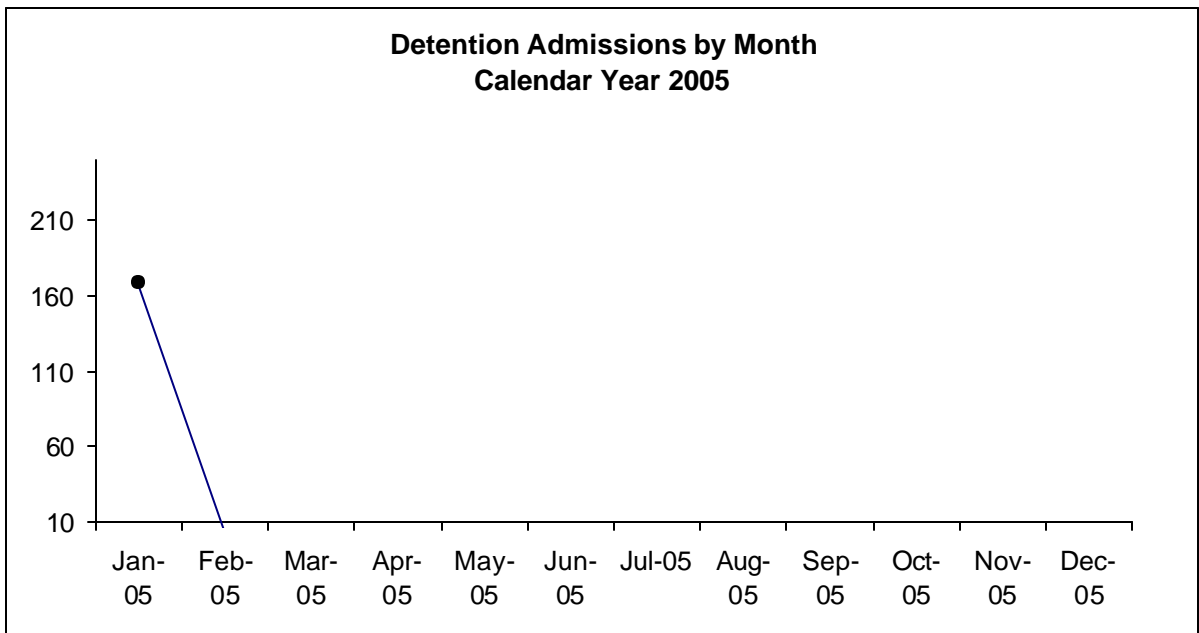


	Rated Capacity	Actual	Over/Under Capacity
San Mateo	130	185	55
Contra Costa	160	120	-40
Alameda	288	250	-38
Santa Clara	329	254	-75
Sacramento	256	321	65
San Francisco	104	114	10

Juvenile Hall Admissions by Month Calendar Year 2005

Detention Admissions by Month

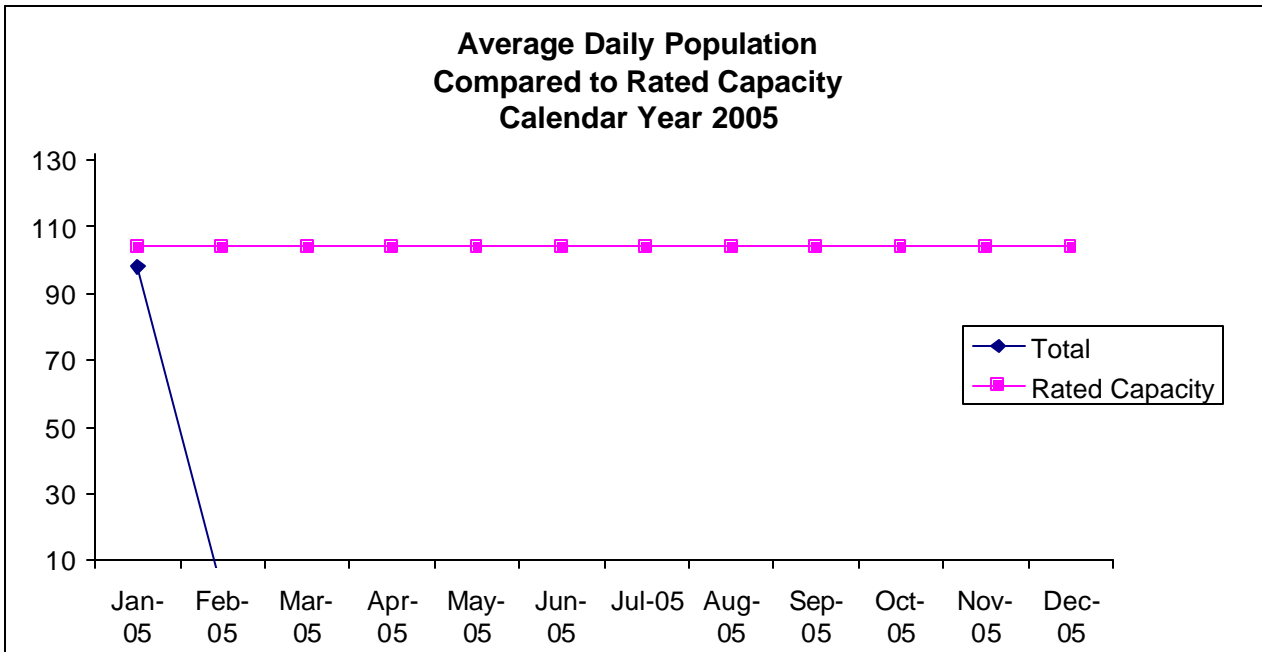
Jan-05	168
Feb-05	
Mar-05	
Apr-05	
May-05	
Jun-05	
Jul-05	
Aug-05	
Sep-05	
Oct-05	
Nov-05	
Dec-05	



Characteristics of Juvenile Hall Detainees on January 31 st , 2005				
Using CJIS Code From the Department of Justice				
Detention Reason	Offense Code	MF	Count	%
ATTEMPTED MURDER:SECOND DEGREE ON PEACE OFFICER	664 /187 (A) PC	F	1	0.89%
LEWD OR LASCIVIOUS ACTS W/CHILD UNDER 14 YEARS	288 (A) PC	F	1	0.89%
ARSON:INHABITED STRUCTURE/PROPERTY	451 (B) PC	F	5	4.46%
SHOOT AT INHABITED DWELLING/VEHICLE/ETC	246 PC	F	1	0.89%
ROBBERY	211 PC	F	5	4.46%
ADW NOT A FIREARM ON P.O./FIREFIGHTER:GBI LIKELY	245 (C) PC	F	1	0.89%
TRANSPORT/SELL NARCOTIC/CONTROLLED SUBSTANCE	11352 (A) HS	F	11	9.82%
POSSESS/PURCHASE COCAINE BASE FOR SALE	11351.5 HS	F	4	3.57%
BURGLARY:FIRST DEGREE	459 PC	F	4	3.57%
ROBBERY:SECOND DEGREE	212.5(C) PC	F	22	19.64%
POSSESS/PURCHASE FOR SALE NARCOTIC/CONTROLLED SUBSTANCE	11351 HS	F	1	0.89%
FORCE OR ADW NOT FIREARM:GBI LIKELY	245 (A)(1) PC	F	3	2.68%
THROW SUBSTANCE AT VEHICLE WITH GBI INTENT	23110 (B) VC	F	1	0.89%
BATTERY ON CUSTODIAL OFFICER	243.1 PC	F	1	0.89%
POSSESS MARIJUANA FOR SALE	11359 HS	F	2	1.79%
POSSESS CONTROLLED SUBSTANCE FOR SALE	11378 HS	F	1	0.89%
POSSESS FIREARM W/ALTERED IDENTIFICATION	12091 PC	F	1	0.89%
CARRY CONCEALED STOLEN WEAPON	12025 (B)(2) PC	F	1	0.89%
SODOMY W/PERSON UNDER 18 YEARS	286 (B)(1) PC	F	1	0.89%
SODOMY	286 (A) PC	F	1	0.89%
THREATEN CRIME W/INTENT TO TERRORIZE	422 PC	F	1	0.89%
EMBEZZLEMENT BY EMPLOYEE [OVER \$400]	508 PC	F	1	0.89%
GRAND THEFT FROM PERSON	487 (C) PC	F	1	0.89%
CARRY CONCEALED WEAPON ON PERSON W/PRIOR CONVICTION	12025 (A)(2) PC	F	1	0.89%
DAMAGE ETC/USE ETC/POWER CONNECTING LINES	591 PC	F	1	0.89%
OBSTRUCT/RESIST/ETC PUBLIC/PEACE OFFICER/EMERGENCY MED TECH	148 (A)(1) PC	M	1	0.89%
TAKE VEHICLE WITHOUT OWNER'S CONSENT	10851 (A) VC	M	1	0.89%
FAIL TO OBEY ORDER OF JUVENILE COURT 602 WI	777 (A)(2) WI	M	8	7.14%
VIOLATION(S) OF HOME SUPERVISION CONDITION	628.1 WI	M	6	5.36%
CHANGE OF PLACEMENT/PLACEMENT FAILURE	737 WI	M	3	2.68%
COURT ORDER 602	CTORD 602		4	3.57%
ARREST WARRANT	WRNT602		9	8.04%
BENCH WARRANT	BENCH WARRANT		7	6.25%
		Total	112	100.00%

**Average Daily Population
By Rated Capacity
Calendar Year 2005**

	Total	Rated Capacity
Jan-05	98	104
Feb-05		104
Mar-05		104
Apr-05		104
May-05		104
Jun-05		104
Jul-05		104
Aug-05		104
Sep-05		104
Oct-05		104
Nov-05		104
Dec-05		104



Juvenile Hall Average Length of Stay

For the Month of January 2005

¹Released

Range of Days	<i>1-10 days</i>	<i>11-20 days</i>	<i>21-30 days</i>	<i>30 or more days</i>	Total
# of Youth Released	90	22	9	15	136
% of Population	71.30%	8.70%	3.80%	16.30%	100%
# of Days	317	348	232	1153	2050
% of Total Days	15.46%	16.98%	11.32%	56.24%	100%
Average Length of Stay	3.52	15.82	25.78	76.87	15.07

²In Custody

Range of Days	<i>1-10 days</i>	<i>11-20 days</i>	<i>21-30 days</i>	<i>30 or more days</i>	Total
# of Youth Detained	25	27	18	42	112
% of Population	38.60%	18.10%	12.60%	30.70%	100%
# of Days	146	416	440	3651	4653
% of Total Days	3.14%	8.94%	9.46%	78.47%	100%
Average Length of Stay	5.84	15.41	24.44	86.93	41.54

Notes: Less than one day of stay is calculated as one day.

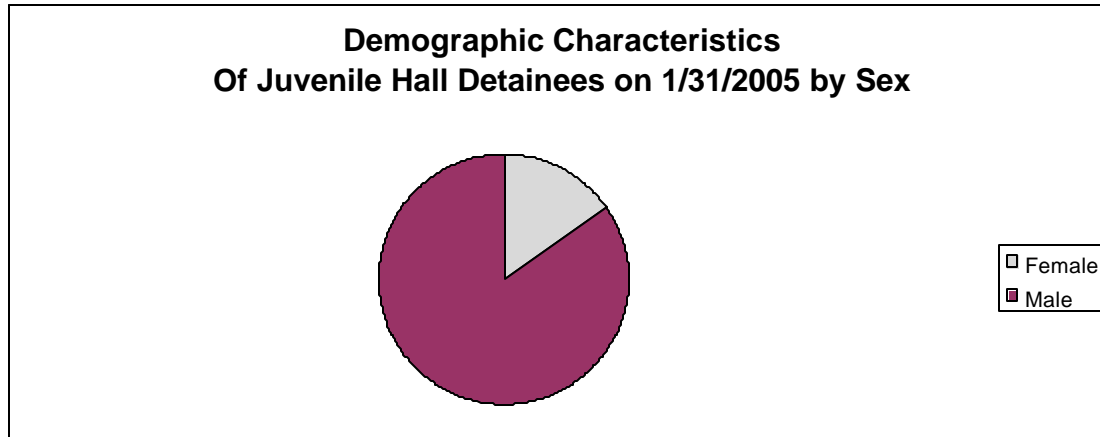
¹Length of stay is calculated according to release date for those who are released.

²For those still in custody, length of stay is calculated at the last day of the month.

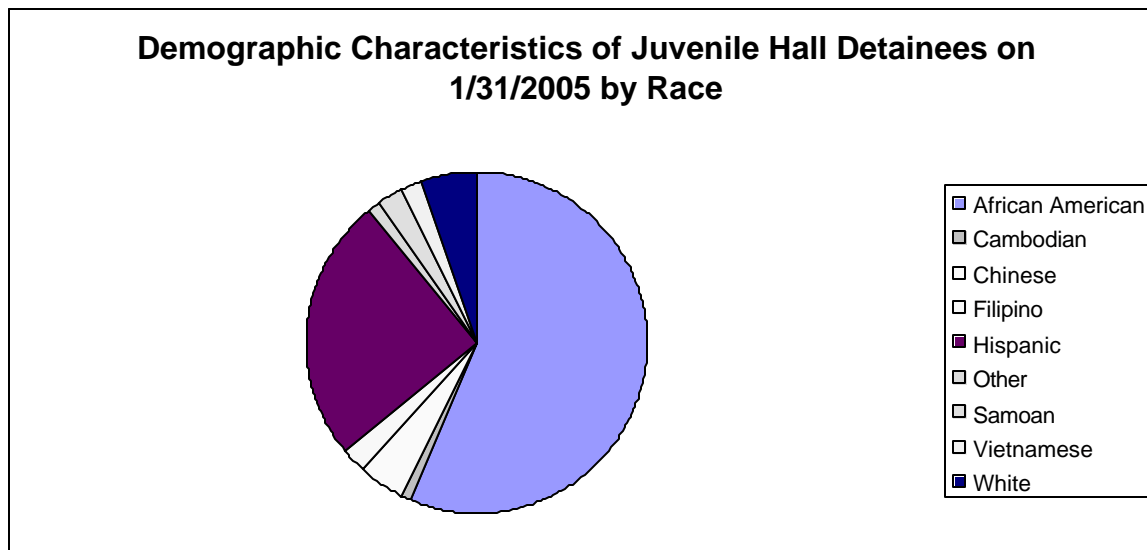
Section III

Demographics

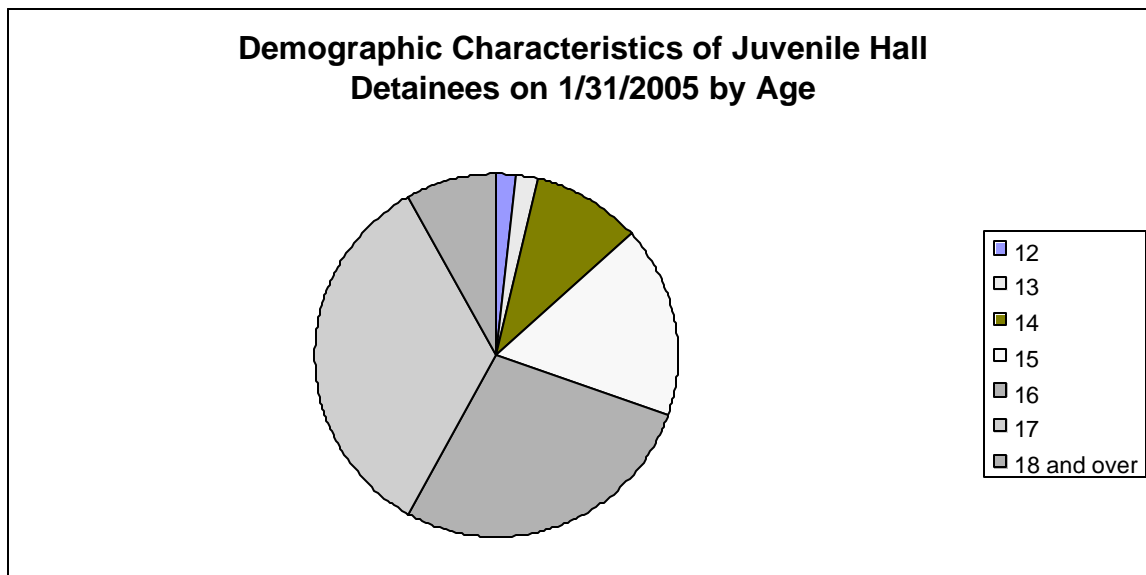
Sex	Frequency	Percent
Female	17	15.18%
Male	95	84.82%
Total	112	100.00%



Race/Ethnic Origin	Frequency	Percent
African American	63	56.25%
Cambodian	1	0.89%
Chinese	5	4.46%
Filipino	3	2.68%
Hispanic	28	25.00%
Other	1	0.89%
Samoan	3	2.68%
Vietnamese	2	1.79%
White	6	5.36%
Total	112	100.00%

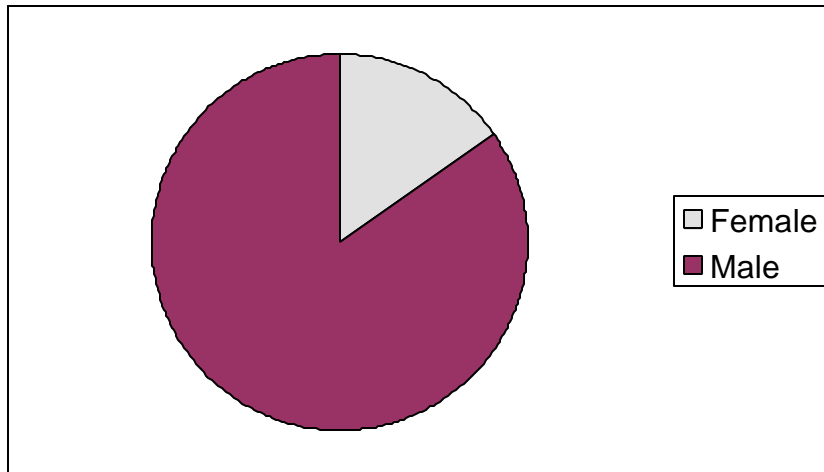


Age	Frequency	Percent
12	2	1.79%
13	2	1.79%
14	11	9.82%
15	19	16.96%
16	31	27.68%
17	38	33.93%
18 and over	9	8.04%
Total	112	100.00%



Demographic Characteristics of Juvenile Hall Detainees
on 1/31/2005
Age by Sex

Age	Female	Male	Total	
12	0	2	2	1.79%
13	0	2	2	1.79%
14	3	8	11	9.82%
15	1	18	19	16.96%
16	5	26	31	27.68%
17	7	31	38	33.93%
18 and over	1	8	9	8.04%
Total	17	95	112	100.00%
	15.18%	84.82%	100.00%	



Demographic Characteristics
Of Juvenile Hall Detainees on January 31st, 2005

Geographic Residence of Youth	Frequency	Percent
Richmond	2	1.8
North of Market/Downtown	2	1.8
Treasure Island/Yerba Buena	1	.9
Western Addition	18	16.1
South of Market/Tenderloin	1	.9
Sunset	4	3.6
Haight Ashbury/Castro	1	.9
Inner Mission	5	4.5
Potrero	2	1.8
Parkside	2	1.8
Ingleside (West of Twin Peaks)	9	8.0
Outer Mission	14	12.5
Bayview	25	22.3
Non-San Francisco and Unavailable*	26	23.2
	-----	-----
Total	112	100.0

*Non-San Francisco and Unavailable	Frequency	Percent
ANTIOCH	1	3.8
BRENTWOOD	1	3.8
CONCORD	1	3.8
CONWAY, SC	1	3.8
DALY CITY	1	3.8
FAIR OAKS	1	3.8
HONDURAS	4	15.4
LAKEPORT	1	3.8
MEXICO	1	3.8
OAKLAND	5	19.2
RICHMOND	2	7.7
SAN ANDREAS	1	3.8
SAN PABLO	1	3.8
STOCKTON	1	3.8
UNAVAILABLE	3	11.5
UNION CITY	1	3.8
	-----	-----
Total	26	100.0

Demographic Characteristics
Of Juvenile Hall Detainees on January 31st, 2005

Race/Ethnic Origin by Sex

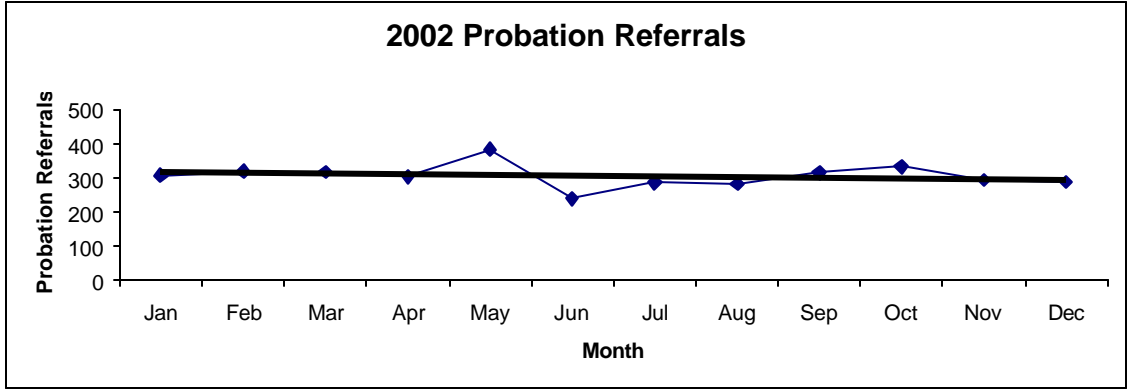
RACE	Count	SEX		Row Total
		Female	Male	
		F	M	
AFRICAN AMERICAN	7	56	63	56.3
CHINESE		5	5	4.5
CAMBODIAN	1		1	.9
FILIPINO	3		3	2.7
HISPANIC	4	24	28	25.0
OTHER		1	1	.9
SAMOAN		3	3	2.7
VIETNAMESE	1	1	2	1.8
WHITE	1	5	6	5.4
Column Total	17	95	112	100.0
	15.2	84.8		

Section IV

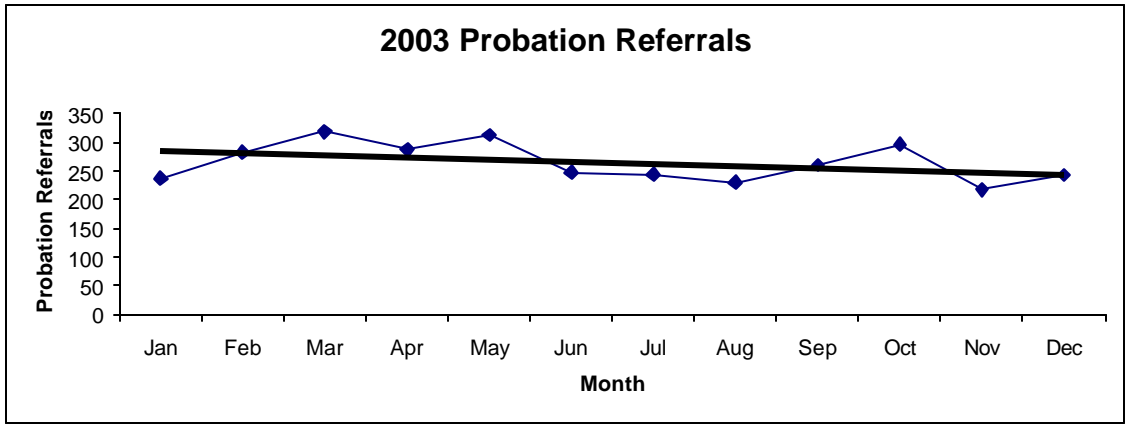
Historical Information

San Francisco Juvenile Probation
Probation Referrals (all sources) By Month
 (2002-2004)

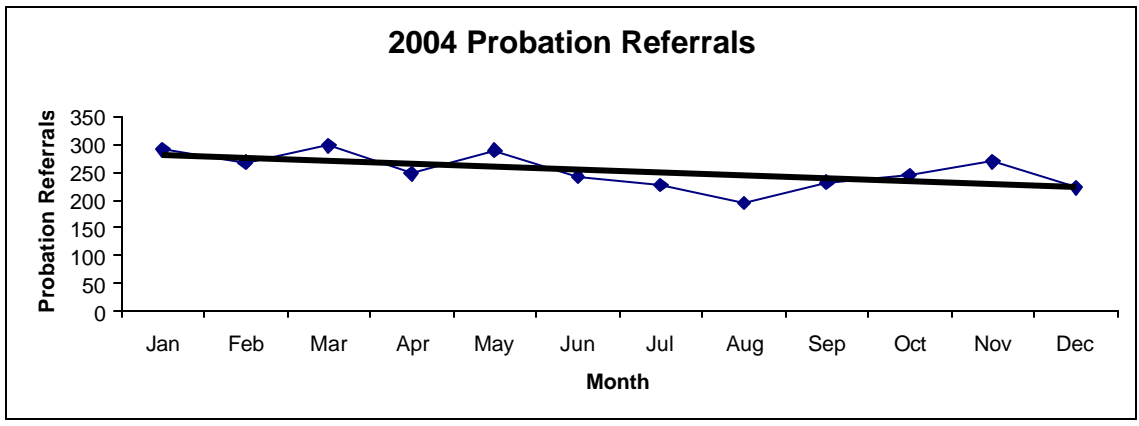
2002 Probation Referrals	Jan	Feb	Mar	Apr	May	Jun	Jul	Aug	Sep	Oct	Nov	Dec	Total
	308	320	318	305	384	240	286	283	315	333	294	289	3675



2003 Probation Referrals	Jan	Feb	Mar	Apr	May	Jun	Jul	Aug	Sep	Oct	Nov	Dec	Total
	238	283	320	288	313	248	245	231	261	297	218	243	3185

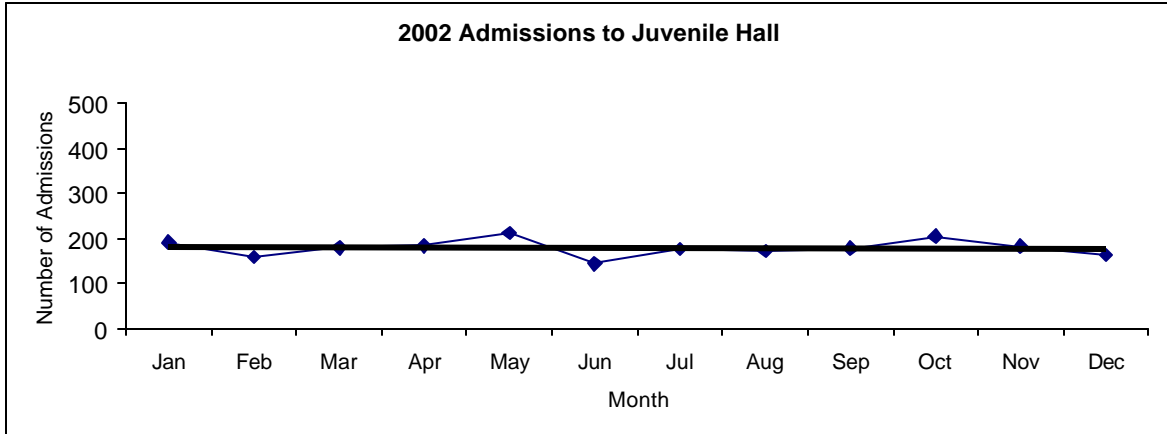


2004 Probation Referrals	Jan	Feb	Mar	Apr	May	Jun	Jul	Aug	Sep	Oct	Nov	Dec	Total
	291	268	298	247	289	243	227	195	232	245	269	222	3026

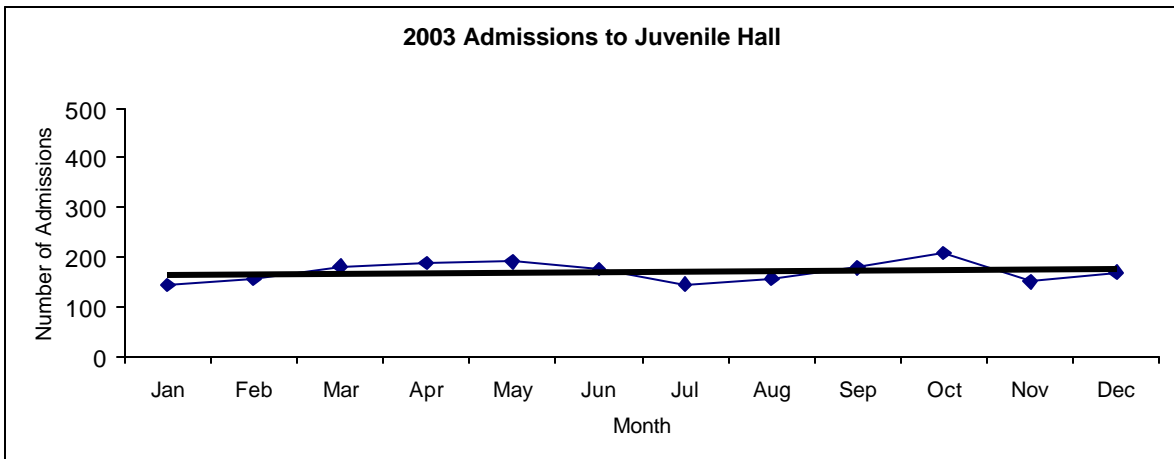


San Francisco Juvenile Probation
Juvenile Hall Admissions By Month
 (2002-2004)

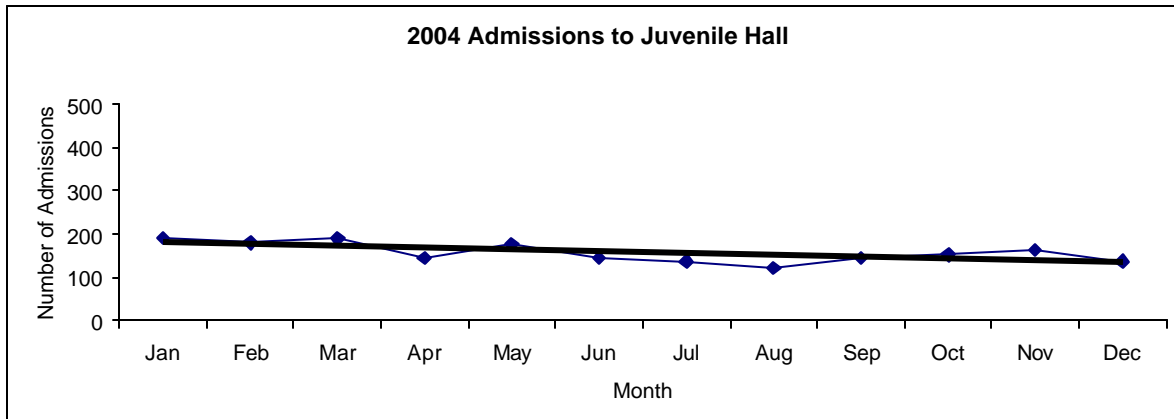
2002 Admissions	Jan	Feb	Mar	Apr	May	Jun	Jul	Aug	Sep	Oct	Nov	Dec	Total
	193	160	181	185	213	145	177	173	179	206	183	164	2159



2003 Admissions	Jan	Feb	Mar	Apr	May	Jun	Jul	Aug	Sep	Oct	Nov	Dec	Total
	144	156	181	189	191	176	145	158	179	208	151	170	2048

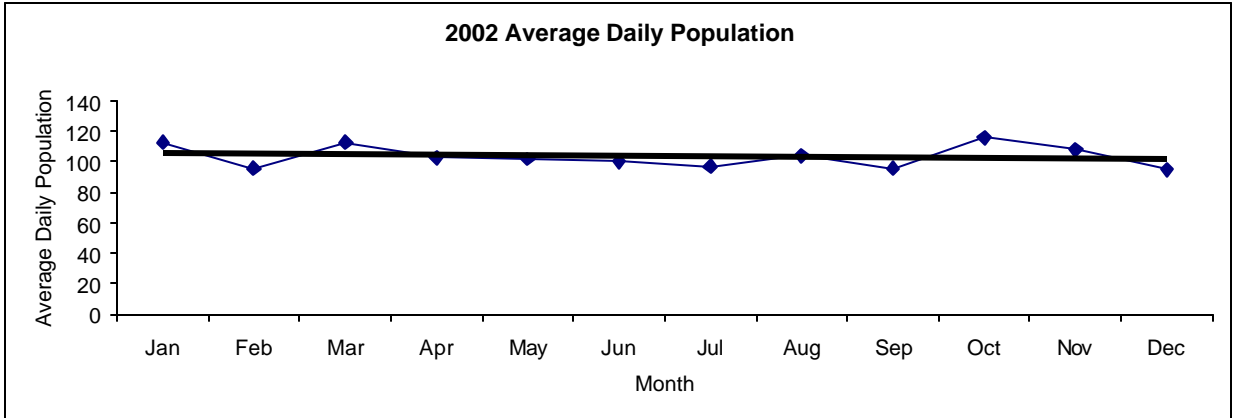


2004 Admissions	Jan	Feb	Mar	Apr	May	Jun	Jul	Aug	Sep	Oct	Nov	Dec	Total
	191	180	189	144	177	145	137	121	144	152	163	137	1880

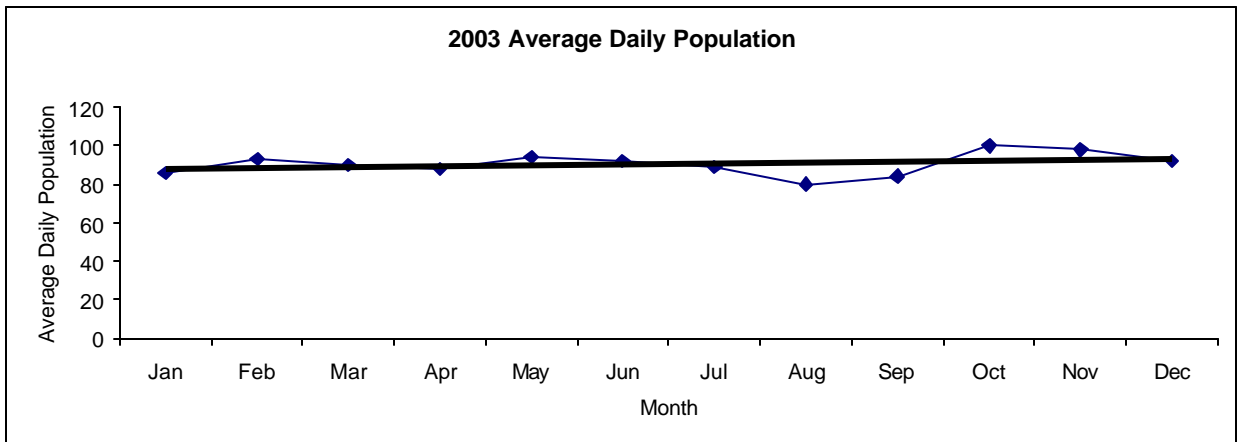


**San Francisco Juvenile Probation
 Juvenile Hall Average Daily Population By Month
 (Calendar Years 2002-2004)**

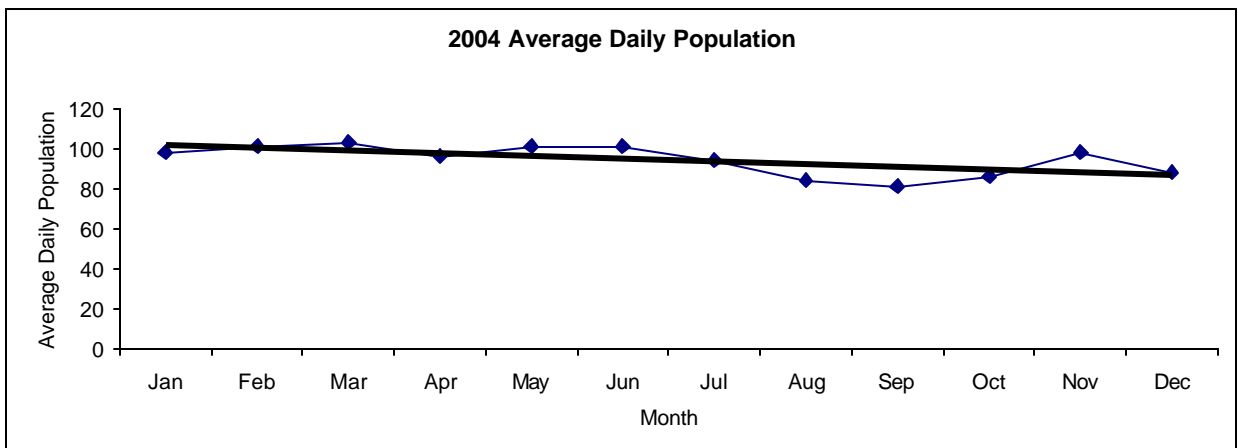
2002 Avg. Daily Pop.	Jan	Feb	Mar	Apr	May	Jun	Jul	Aug	Sep	Oct	Nov	Dec	Total
	113	96	113	103	102	100	97	104	96	116	108	95	104



2003 Avg. Daily Pop.	Jan	Feb	Mar	Apr	May	Jun	Jul	Aug	Sep	Oct	Nov	Dec	Total
	86	93	90	88	94	92	89	80	84	100	98	92	91

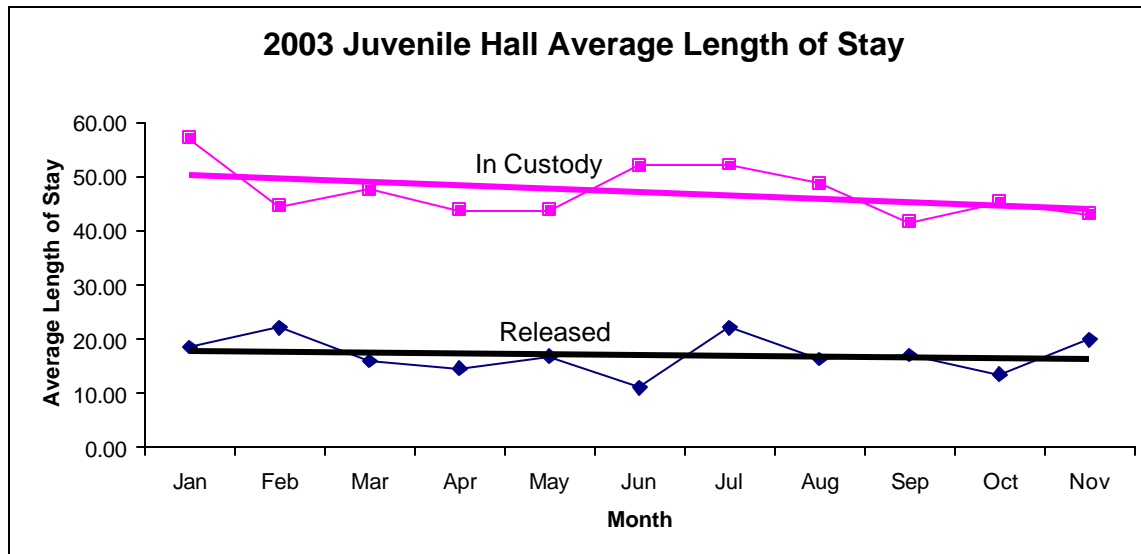


2004 Avg. Daily Pop.	Jan	Feb	Mar	Apr	May	Jun	Jul	Aug	Sep	Oct	Nov	Dec	Total
	98	101	103	96	101	101	94	84	81	86	98	88	94

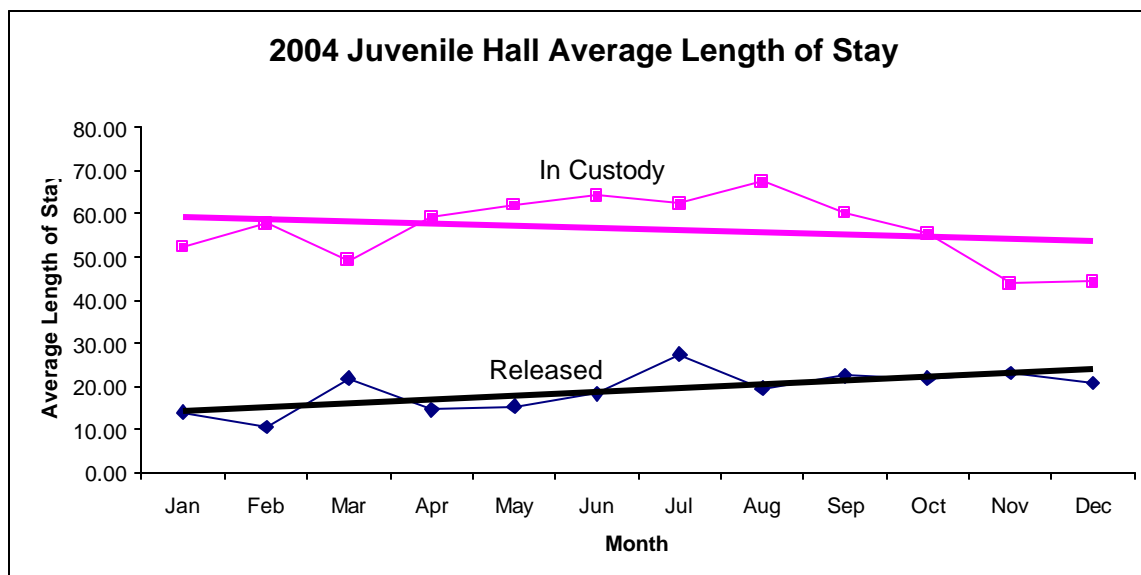


San Francisco Juvenile Probation
Juvenile Hall Average Length of Stay By Month
 (Calendar Years 2003-2004)

2003 Avg. Length of Stay	Jan	Feb	Mar	Apr	May	Jun	Jul	Aug	Sep	Oct	Nov	Dec	Total
¹ Released	18.58	22.16	15.97	14.65	16.86	11.07	22.21	16.41	17.13	13.51	19.87	17.30	17.14
² In Custody	56.97	44.53	47.63	43.78	43.80	51.98	52.13	48.67	41.61	45.30	43.04	53.96	47.78



2004 Avg. Length of Stay	Jan	Feb	Mar	Apr	May	Jun	Jul	Aug	Sep	Oct	Nov	Dec	Total
¹ Released	14.04	10.58	21.86	14.71	15.42	18.24	27.41	19.52	22.55	21.81	23.15	20.81	19.18
² In Custody	52.35	57.73	49.20	59.05	62.03	64.15	62.37	67.37	60.14	55.37	43.85	44.29	56.49



Notes: Less than one day of stay is calculated as one day.

¹ Length of stay is calculated according to release date for those who are released.

² For those still in custody, length of stay is calculated at the last day of the month.