

City and County of San Francisco



Juvenile Probation Department

Monthly Report for November 2004

Presented to the Juvenile Probation Commission

December 22nd, 2004

Table of Contents

Section I Summary Reports

Juvenile Hall, Log Cabin Ranch Summary Statistics.....	1
Community Programs Summary Statistics	2
Probation Services Summary Statistics.....	4

Section II Current Month General Detail

Probation Referrals, Juvenile Admissions And Average Daily Population	6
Juvenile Hall Admissions and Average Daily Population.....	7
Commitments to out-of-home placement.....	8
Commitments to California Youth Authority.....	9
Log Cabin Ranch Admissions and Average Daily Population.....	10
Probation Referrals	11
Juvenile Hall And Log Cabin Ranch Incident Report	12
Juvenile Hall And Log Cabin Ranch Grievances Report.....	13
Bay Area Resident Juvenile Hall Comparison	14
Juvenile Hall Admissions.....	15
Juvenile Hall Detainees by Detention Reason.....	16
Juvenile Hall Average Daily Population by Rated Capacity.....	17
Juvenile Hall Average Length of Stay	18

Section III Demographics

Juvenile Hall Detainees by Sex and Race/Ethnic Origin.....	19
Juvenile Hall Detainees by Age	20
Juvenile Hall Detainees by Age and Sex.....	21
Juvenile Hall Detainees by Geographic Residence of Youth.....	22
Juvenile Hall Detainees by Race/Ethnic Origin and Sex.....	23

Section IV
Historical Information

2001-2003 Probation Referrals24
2002-2003 Juvenile Hall Admissions25
2002-2003 Juvenile Hall Average Daily Population.....26
2002-2003 Juvenile Hall Average Length of Stay by Month.....27



Section I

Summary Reports

Summary Report for the Month of November 2004

Juvenile Hall	<i>October 2003</i>	<i>October 2004</i>	<i>November 2003</i>	<i>November 2004</i>	<i>YTD 2003</i>	<i>YTD 2004</i>
Admissions	209	153	154	163	1890	1748
Average Daily Population	100	86	98	98	90.81	95
Average Length of Stay (Releases)	13.51	21.81	19.87	23.15	17.13	18.49
Average Length of Stay (In Custody)	45.3	55.37	43.04	43.85	47.22	57.60
Releases	208	149	150	159	1883	1746
Log Cabin Ranch						
Admissions:						
First Time Commitments	0	0	2	2	25	21
Recommitments	0	0	0	0	0	0
<i>Total</i>	0	0	2	2	25	21
Releases:						
Graduated	5	3	3	1	28	25
Escape	0	0	0	0	0	0
Other releases	0	2	0	1	10	7
<i>Total</i>	5	5	3	2	38	32
Average Daily Population	24	12	20	11	24	15
Grievances Filed						
Juvenile Hall:						
B1	0	2	0	0	4	5
B2	0	0	0	0	1	16
B3	0	0	0	0	0	1
B4	0	4	0	0	14	7
B5	0	4	0	1	5	15
G2 (CO-ED)	0	2	0	0	3	4
<i>Total</i>	0	12	0	1	27	48
Log Cabin Ranch	0	0	0		0	0
Incident Reports						
Juvenile Hall	17	2	21	11	154	108
Log Cabin Ranch	0	0	1	1	11	11
<i>Total</i>	17	2	22	12	165	119

Summary Report for the Month of November 2004

Community Programs	<i>Program Vacancies by Agency on November 2004</i>	<i>Active in program October 2003</i>	<i>Active in Program October 2004</i>	<i>Active in Program November 2003</i>	<i>Active in Program November 2004</i>
IHBS Monthly Client Count					
BayView Hunters Point Foundation	2	16	13	16	13
Chinatown Youth Center	2	10	13	10	13
Morrisania West, Inc.	3	11	12	11	12
Samoan Community Development Center	13	9	2	9	2
Potrero Hill Neighborhood House	6	7	9	7	9
Instituto Familiar de La Raza	8	22	22	22	22
Vietnamese Youth Development Center	0	7	7	7	7
Brothers Against Guns	0	16	30	16	30
<i>Total</i>	34	98	108	98	108
<i>November 2004 Percent Program Utilization</i>	80%				
<i>November 2004 Percent Change from last report</i>	0%				

Summary Report for TANF and Girls Programs
***Data was not available from Community Programs Division**

PROGRAM	ANNUAL GOAL	NUMBER SERVED
California Community Dispute Services: Youth Accountability Boards	45	*
CARECEN: Tattoo Removal and Case Management	45	*
Center for Young Women's Development: Girls Services	40	*
Community Works – Girls Diversion Program	24	*
Community Works – Girls Therapeutic Arts Curriculum in Juvenile Hall	100	*
Community Works – ROOTS Support for Children of Incarcerated Parents	40	*
Edgewood Kinship Support Network	30	*
Family Restoration House: Life Skills	30	*
Girls 2000: Girls Services and Family Support Services	20	*
Instituto Familiar de la Raza – Case Management	14	*
Mission Neighborhood Center: Young Queens on the Rise – Girls Services	35	*
Performing Arts Workshop: Arts Education at Impact High School	30	*
SAGE: Girls Services	35	*
Samoan Community Development Center: Anger Management	75	*
Special Services for Groups – Occupational Therapy Training Program	50	*
United Way/Girls Justice Initiative: Detention-based Case Management & Inside Mentoring Program	300 72	* *
Urban Services YMCA: Bayview Beacon Truancy Support	50	*
YGCIC GED & Focus Vocational Programs	105	*
YWCA – CITS and FITS Girls Mentorship	64	*

Summary Report for the Month of November 2004

Probation Services	<i>October 2004</i>	<i>November 2004</i>	<i>Year To Date 2004</i>
Probation Referrals	265	234	2573
Petitions	99	106	946
Selected Court Dispositions:			
California Youth Authority	0	0	9
Log Cabin Ranch	0	2	17
Out of Home Placement	14	18	178
Other Probation	26	26	309
Violation of Probation Petitions Filed	22	25	189
California Youth Authority Monthly Count			
Institutions:			
Males	38	39	
Females	3	3	
Total	41	42	
Parole:			
Males	29	28	
Females	2	2	
Total	31	30	

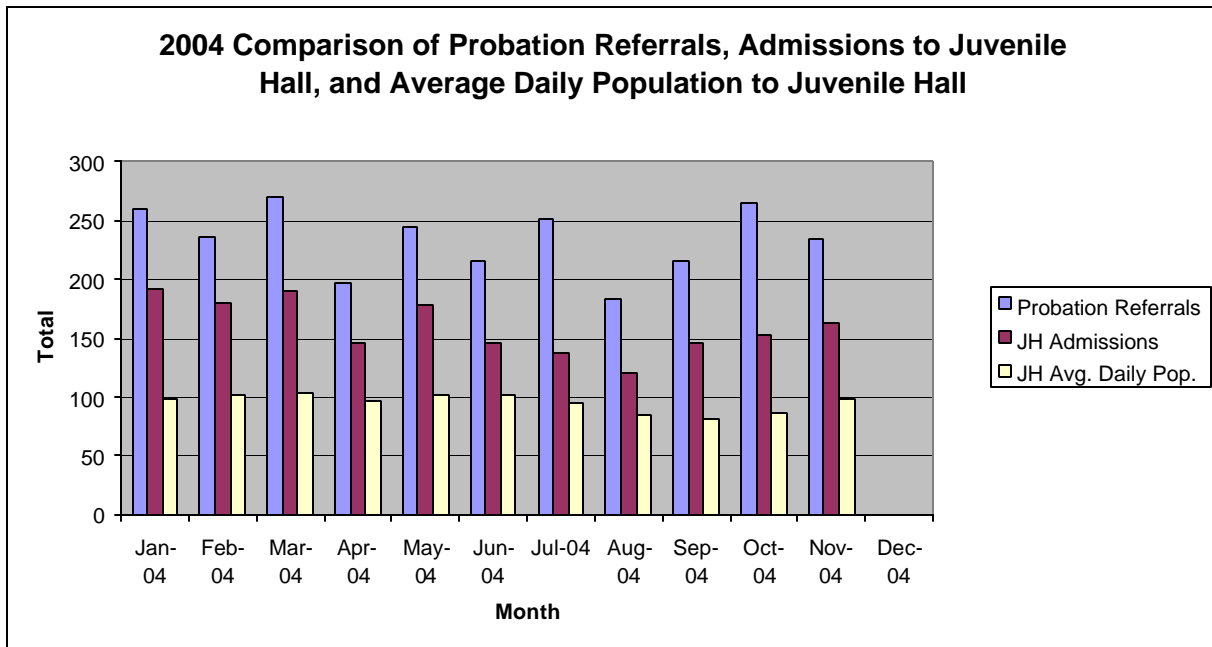
Summary Report for the Month of November 2004

Probation Services			
Caseload List	October 2004	November 2004	November Average # Youth by PO
South Intake	209	223	44
North Intake	226	256	42
Prevention Diversion	142	133	14
Serious Offenders	100	114	19
Supervision	212	209	26
County Placement	14	15	15
Private Placement	204	211	19
Drug Court	30	33	33
Family Integrated Treatment Services	104	93	11
<i>Total</i>	1241	1287	25
Special Services Unit	New	Closed	Active at end of Month
Record Sealings	5	5	156
Stepparent Adoptions	2	0	56
Terminations	0	0	12
Marriage Consents	0	0	3
Custody Evaluations	0	0	0
	Entered	Completed	Active at end of Month
Community Service	19	8	1217
		Referred	Completed at end of Month
COPS		7	3
Street Law		11	10
Theft Awareness (next class in December)		0	0
Anger Management for boys (still in session)		9	0
Anger Management for girls (still in session)		8	0
Life Management Skills		3	3
Kids Turn Non-Violent Family Skills		10	5
Information, Record Checks, Research & Photo Copying Juvenile Records For:	October 2004	November 2004	Year to Date 2004
Job Corps, Probation Departments,			
Military, Law Enforcement,			
Misc., (letters, Memos, Forms, etc.)	128	110	1440

Section II
Current Month
General Detail

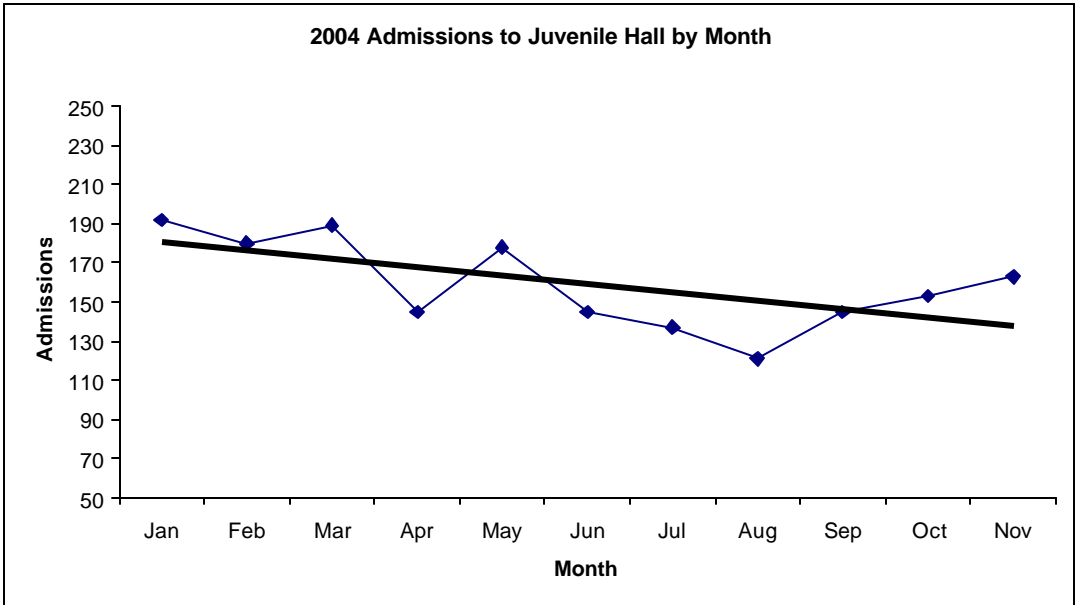
San Francisco Juvenile Probation

	Jan-04	Feb-04	Mar-04	Apr-04	May-04	Jun-04	Jul-04	Aug-04	Sep-04	Oct-04	Nov-04	Dec-04
Probation Referrals	259	236	270	197	245	216	251	184	216	265	234	
JH Admissions	192	180	189	145	178	145	137	121	145	153	163	
JH Avg. Daily Pop.	98	101	103	96	101	101	94	84	81	86	98	

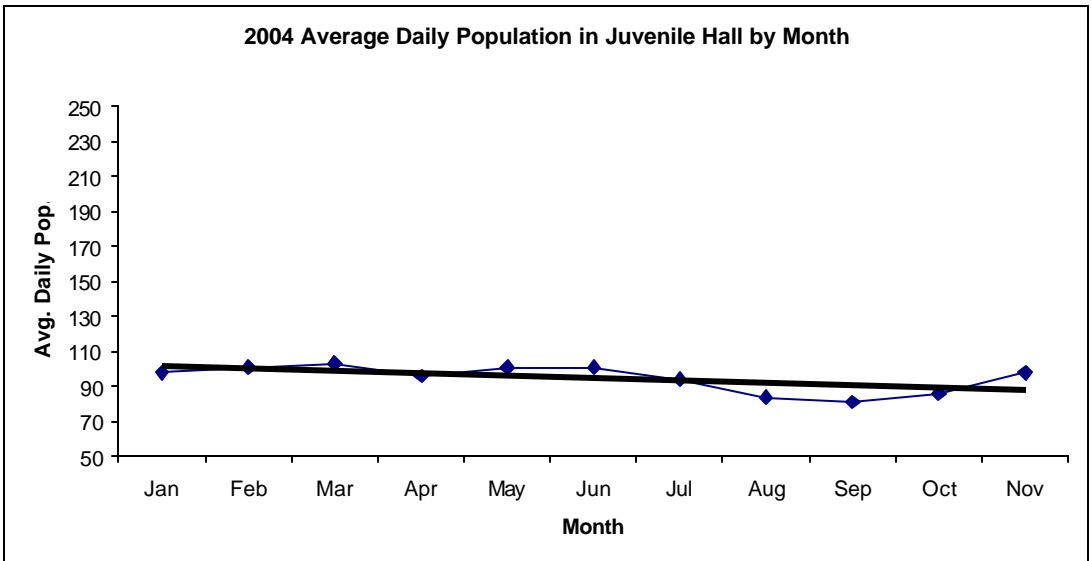


San Francisco Juvenile Probation Admissions and Average Daily Population In Juvenile Hall (Calendar Year 2004)

Admissions	Jan	Feb	Mar	Apr	May	Jun	Jul	Aug	Sep	Oct	Nov	Dec	Total
2004	192	180	189	145	178	145	137	121	145	153	163		1748



Avg. Daily Pop.	Jan	Feb	Mar	Apr	May	Jun	Jul	Aug	Sep	Oct	Nov	Dec	Total
2004	98	101	103	96	101	101	94	84	81	86	98		95

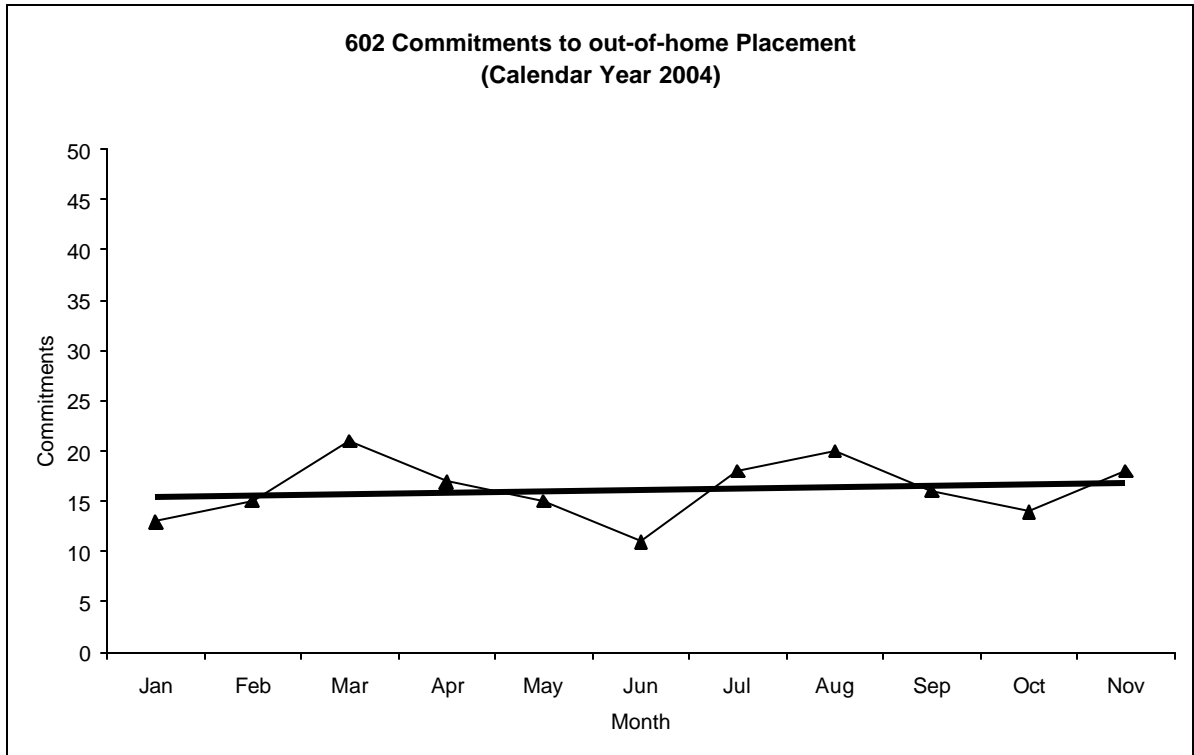


Out-of-Home Placement¹

Commitments of 602's

Calendar Year 2004

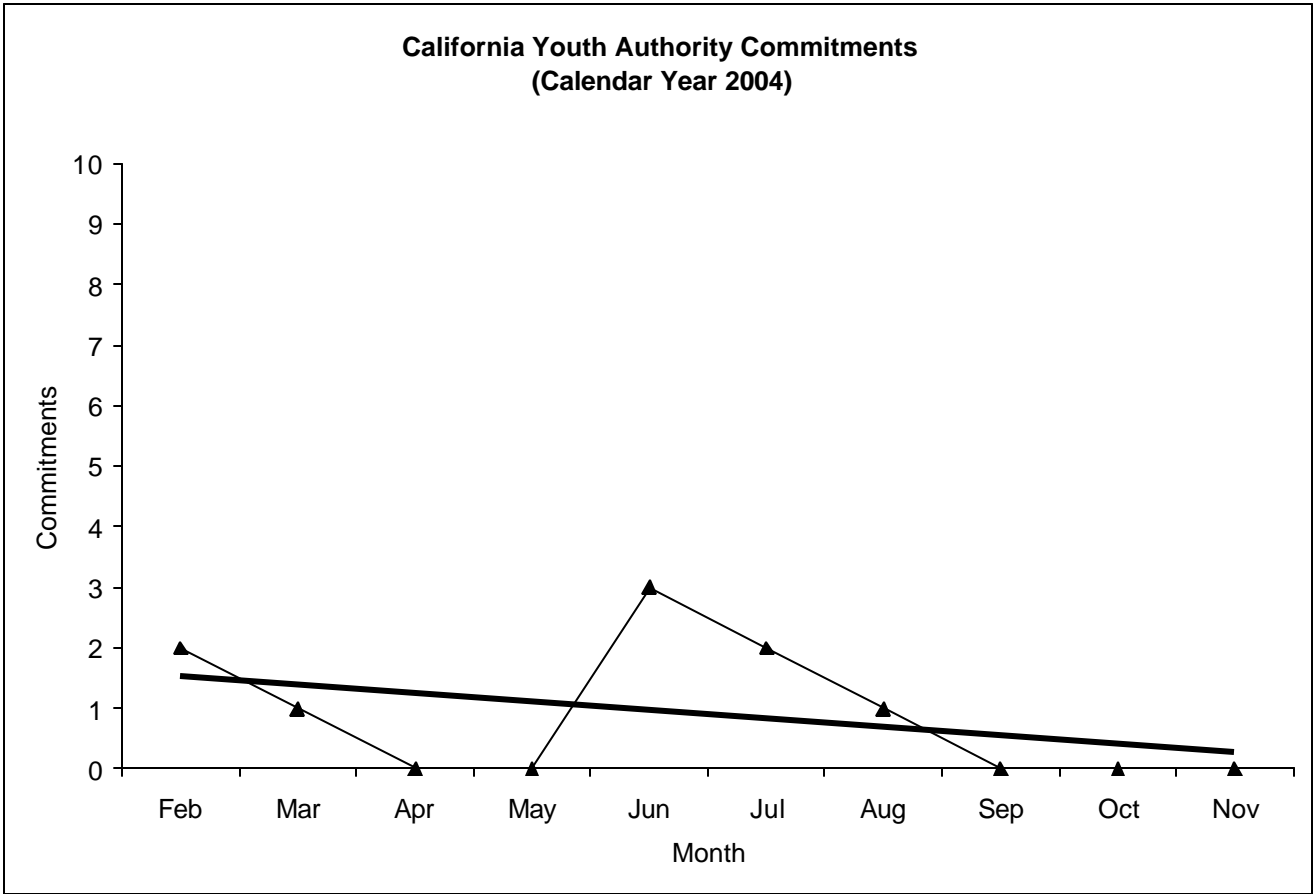
Commitments	Jan	Feb	Mar	Apr	May	Jun	Jul	Aug	Sep	Oct	Nov	Dec	Total
2004	13	15	21	17	15	11	18	20	16	14	18		178



¹ This report is based on 602 Commitments to out-of-home placements. If there is a 601 commitment, it will show as a footnote here. Figures are regularly updated to include reports from previous reporting periods.

California Youth Authority Commitments (Calendar Year 2004)

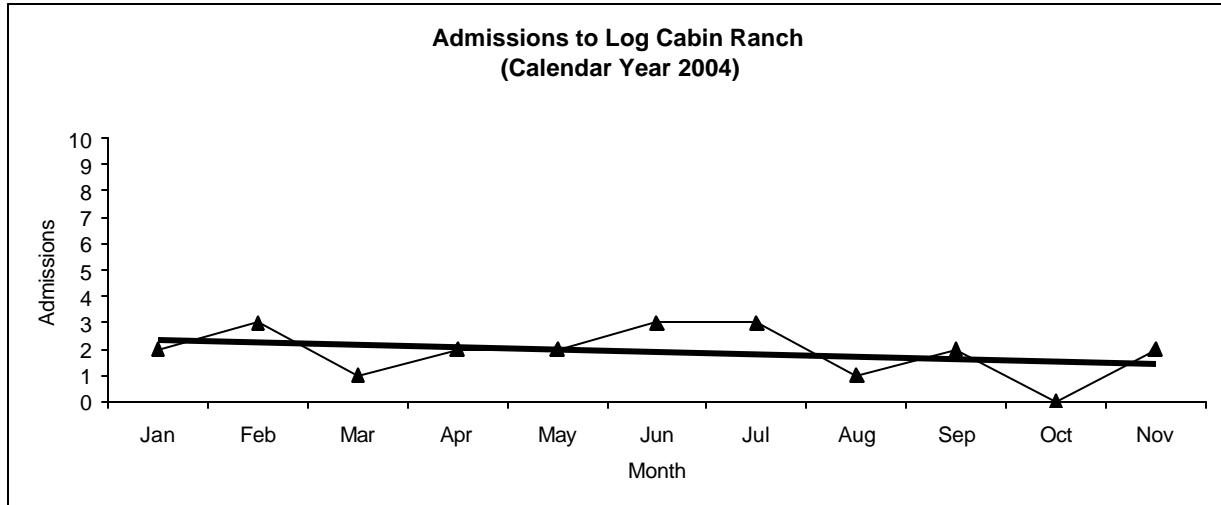
Commitments	Jan	Feb	Mar	Apr	May	Jun	Jul	Aug	Sep	Oct	Nov	Dec	Total
2004	0	2	1	0	0	3	2	1	0	0	0		9



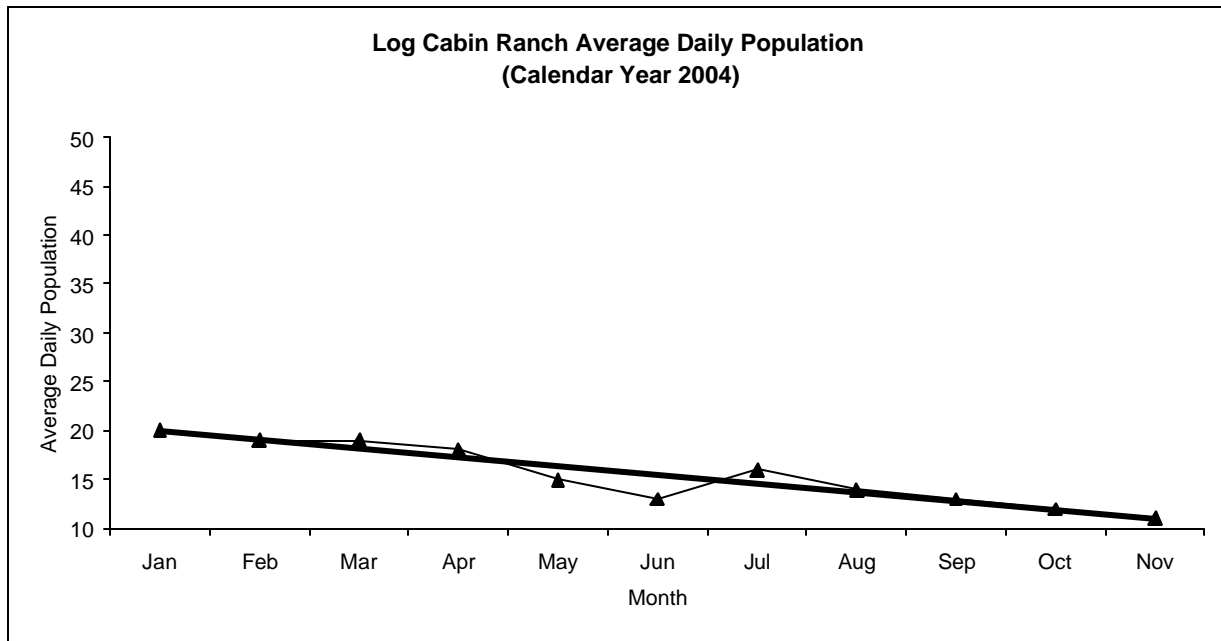
Log Cabin Ranch

Admissions and Average Daily Population (Calendar Year 2004)

Admissions	Jan	Feb	Mar	Apr	May	Jun	Jul	Aug	Sep	Oct	Nov	Dec	Total
2004	2	3	1	2	2	3	3	1	2	0	2		21



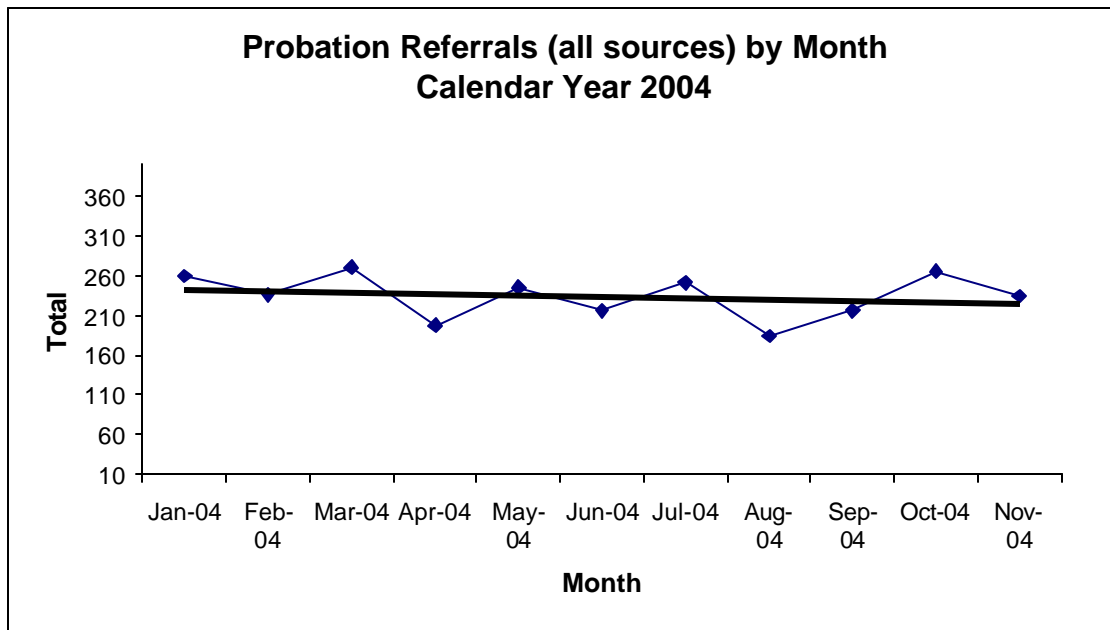
Avg. Daily Pop.	Jan	Feb	Mar	Apr	May	Jun	Jul	Aug	Sep	Oct	Nov	Dec	Total
2004	20	19	19	18	15	13	16	14	13	12	11		15.45



Calendar Year 2004

Probation Referrals (all sources) by Month (602 W&I)

Jan-04	259
Feb-04	236
Mar-04	270
Apr-04	197
May-04	245
Jun-04	216
Jul-04	251
Aug-04	184
Sep-04	216
Oct-04	265
Nov-04	234
Dec-04	



SAN FRANCISCO JUVENILE PROBATION DEPARTMENT
 MONTHLY INCIDENT REPORT FORM
 MONTH/YEAR: NOVEMBER 2004

Log Cabin Ranch	Battery on Staff	Injury to Staff due to Restraint of Minor	Fight	Battery Youth on Youth	Attempted Escape	AWOL	Attempted Suicide	Serious Contraband (Weapon Illegal Drug)
	0	0	1	0	0	0	0	0
	Battery on Staff with Injury	Fire	Fight with Injury	Battery Youth on Youth with Injury	Escape	Death	Suicide	Major Property Destruction
	0	0	0	0	0	0	0	0
Juvenile Hall	Battery on Staff	Injury to Staff due to Restraint of Minor	Fight	Battery Youth on Youth	Attempted Escape	AWOL	Attempted Suicide	Serious Contraband (Weapon Illegal Drug)
	2	0	2	0	0	0	2	2
	Battery on Staff with Injury	Fire	Fight with Injury	Battery Youth on Youth with Injury	Escape	Death	Suicide	Major Property Destruction
	0	0	3	0	0	0	0	0

Grievances Filed November 2004

San Francisco Juvenile Probation Department

Juvenile Hall



**Grievances Filed November 2004
San Francisco Probation Department
From the office of the Ombudsman.**

<i>Area of Infraction</i>	<i>Title 15 Article/Section</i>	<i>Girls Unit</i>	<i>B1</i>	<i>B2</i>	<i>B3</i>	<i>B4</i>	<i>B5</i>	<i>TOTAL</i>
<i>Recreation and Exercise</i>	6.1371	0	0	0	0	0	0	0
<i>Discipline</i>	7.1390	0	0	0	0	0	1	1
<i>Discipline Process</i>	7.1391	0	0	0	0	0	0	0
<i>Juvenile Rights</i>	12.2	0	0	0	0	0	0	0
<i>Meritless</i>	12.2	0	0	0	0	0	0	0
<i>Counseling and Casework</i>	5.1356	0	0	0	0	0	0	0
Total		0	0	0	0	0	1	1

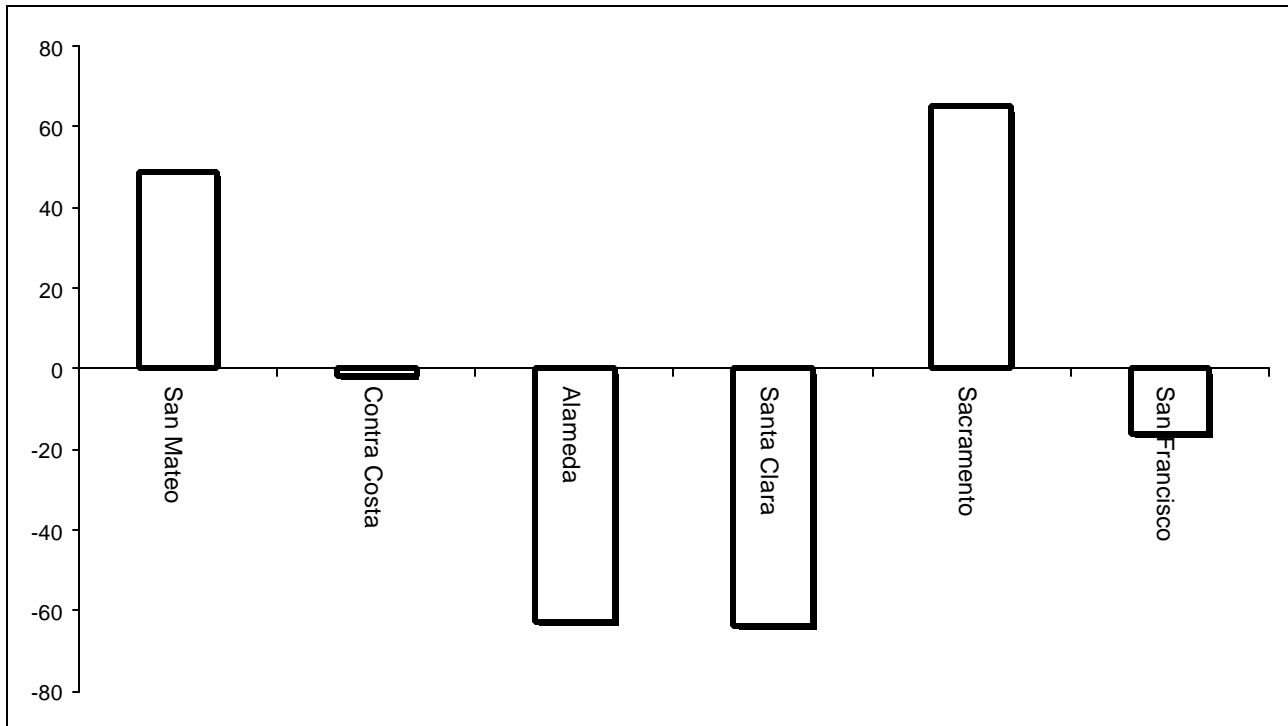
There was one grievance filed, however, it had multiple of infractions.

Log Cabin Ranch

Type	Log Cabin Ranch
Food/Snacks	0
Laundry	0
Personal Property	0
Phone Calls	0
Procedures	0
Head Call	0
Discipline	0
Complaints vs. Staff	0
Cottage Change	0
Medical	0
School	0
Probation	0
Miscellaneous	0
Total	0

Bay Area Resident Juvenile Hall Comparison Over/Under Capacity

on December 2nd, 2004

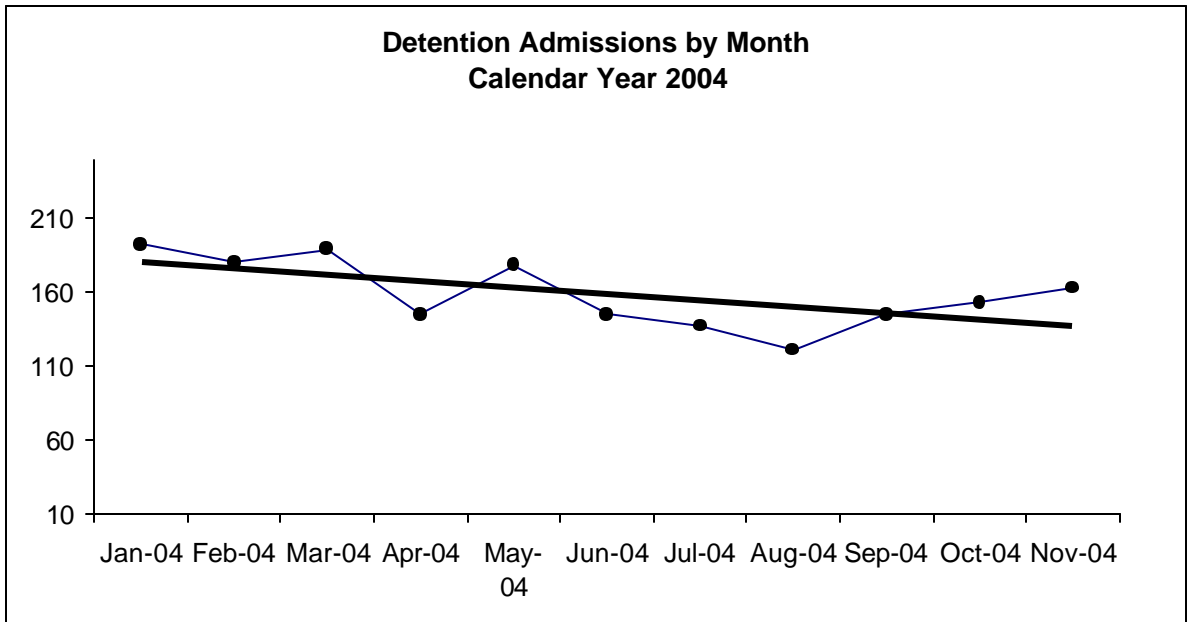


	Rated Capacity	Actual	Over/Under Capacity
San Mateo	130	179	49
Contra Costa	160	158	-2
Alameda	288	225	-63
Santa Clara	329	265	-64
Sacramento	256	321	65
San Francisco	104	88	-16

Juvenile Hall Admissions by Month Calendar Year 2004

Detention Admissions by Month

Jan-04	192
Feb-04	180
Mar-04	189
Apr-04	145
May-04	178
Jun-04	145
Jul-04	137
Aug-04	121
Sep-04	145
Oct-04	153
Nov-04	163
Dec-04	

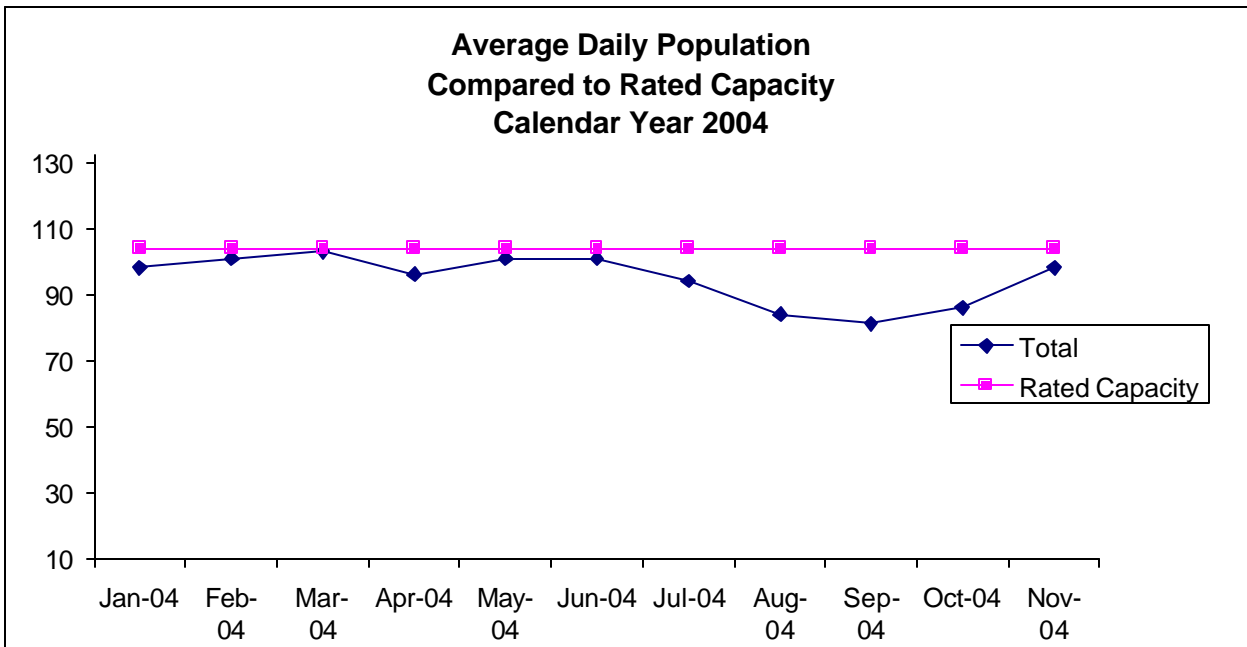


**Characteristics of Juvenile Hall Detainees on November 30th, 2004
Using CJIS Code From the Department of Justice**

Detention Reason	Offense Code	MF	Count	%
ATTEMPTED MURDER:SECOND DEGREE ON PEACE OFFICER	664 /187 (A) PC	F	1	1.12%
RAPE BY FORCE/FEAR/ETC	261 (A)(2) PC	F	1	1.12%
LEWD OR LASCIVIOUS ACTS W/CHILD UNDER 14 YEARS	288 (A) PC	F	1	1.12%
CARJACKING	215 (A) PC	F	1	1.12%
ARSON:INHABITED STRUCTURE/PROPERTY	451 (B) PC	F	1	1.12%
ROBBERY	211 PC	F	1	1.12%
ASSAULT W/DEADLY WEAPON ON TRANSPORTATION PERSONNEL/ETC	245.2 PC	F	1	1.12%
TRANSPORT/SELL NARCOTIC/CONTROLLED SUBSTANCE	11352 (A) HS	F	11	12.36%
POSSESS/PURCHASE COCAINE BASE FOR SALE	11351.5 HS	F	3	3.37%
BURGLARY	459 PC	F	1	1.12%
ROBBERY:SECOND DEGREE	212.5(C) PC	F	9	10.11%
HAVE FIREARM AT PUBLIC/ETC SCHOOL	626.9(B) PC	F	1	1.12%
ASSAULT:DEADLY WEAPON OR FORCE:POSSIBLE GREAT BODILY INJ	245 (A) PC	F	1	1.12%
FORCE OR ADW NOT FIREARM:GBI LIKELY	245 (A)(1) PC	F	8	8.99%
BATTERY ON CUSTODIAL OFFICER	243.1 PC	F	1	1.12%
POSSESS NARCOTIC CONTROLLED SUBSTANCE	11350 (A) HS	F	1	1.12%
POSSESS MARIJUANA FOR SALE	11359 HS	F	1	1.12%
POSSESS FIREARM W/ALTERED IDENTIFICATION	12091 PC	F	1	1.12%
CARRY CONCEALED STOLEN WEAPON	12025 (B)(2) PC	F	2	2.25%
GRAND THEFT FROM PERSON	487 (C) PC	F	1	1.12%
TAKE VEHICLE W/O OWNER'S CONSENT/VEHICLE THEFT	10851 (A) VC	F	5	5.62%
RECEIVE/ETC KNOWN STOLEN PROPERTY	496 (A) PC	F	1	1.12%
POSSESS/MANUFACTURE/SELL DANGEROUS WEAPONS/EXPLOSIVES/ETC	12020 (A) PC	F	2	2.25%
OBSTRUCT/RESIST/ETC PUBLIC/PEACE OFFICER/EMERGENCY MED TECH	148 (A)(1) PC	M	1	1.12%
VANDALISM:DEFACE PROPERTY	594 (A)(1) PC	M	2	2.25%
BATTERY	242 PC	M	1	1.12%
ASSIST ACT OF INDECENT EXPOSURE	314.2 PC	M	1	1.12%
FAIL TO OBEY ORDER OF JUVENILE COURT 602 WI	777 (A)(2) WI	M	7	7.87%
CHANGE OF PLACEMENT/PLACEMENT FAILURE	737 WI	M	5	5.62%
VIOLATION(S) OF HOME SUPERVISION CONDITION	628.1 WI	M	1	1.12%
BENCH WARRANT	BENCH WARRANT		6	6.74%
WARRANT	WRNT602		2	2.25%
COURT ORDER	CTORD 602		6	6.74%
CYA RETURN FOR COURT HEARING	779 WI		1	1.12%
	Total		89	100.00%

**Average Daily Population
By Rated Capacity
Calendar Year 2004**

	Total	Rated Capacity
Jan-04	98	104
Feb-04	101	104
Mar-04	103	104
Apr-04	96	104
May-04	101	104
Jun-04	101	104
Jul-04	94	104
Aug-04	84	104
Sep-04	81	104
Oct-04	86	104
Nov-04	98	104
Dec-04		104



Juvenile Hall Average Length of Stay

For the Month of November 2004

¹Released

Range of Days	<i>1-10 days</i>	<i>11-20 days</i>	<i>21-30 days</i>	<i>30 or more days</i>	Total
# of Youth Released	108	16	8	27	159
% of Population	71.30%	8.70%	3.80%	16.30%	100%
# of Days	376	231	201	2873	3681
% of Total Days	10.21%	6.28%	5.46%	78.05%	100%
Average Length of Stay	3.48	14.44	25.13	106.41	23.15

²In Custody

Range of Days	<i>1-10 days</i>	<i>11-20 days</i>	<i>21-30 days</i>	<i>30 or more days</i>	Total
# of Youth Detained	17	22	17	33	89
% of Population	38.60%	18.10%	12.60%	30.70%	100%
# of Days	86	338	446	3033	3903
% of Total Days	2.20%	8.66%	11.43%	77.71%	100%
Average Length of Stay	5.06	15.36	26.24	91.91	43.85

Notes: Less than one day of stay is calculated as one day.

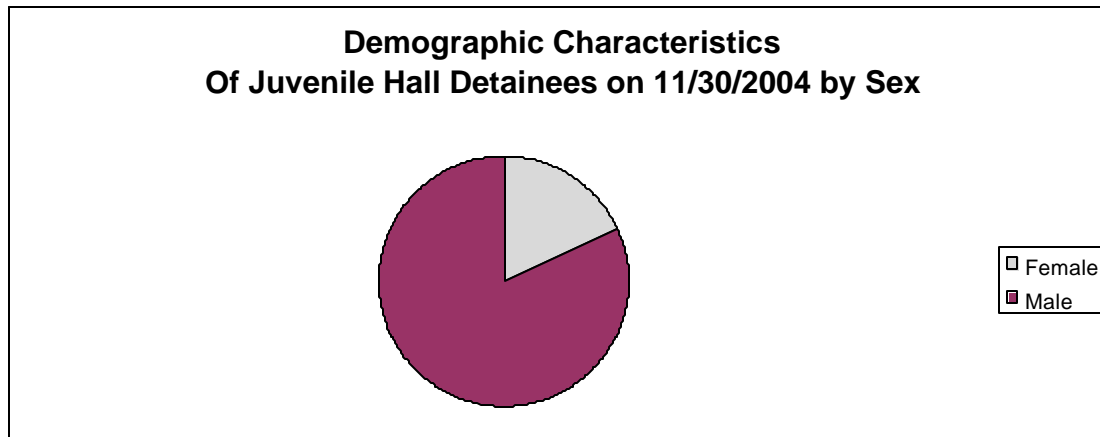
¹Length of stay is calculated according to release date for those who are released.

²For those still in custody, length of stay is calculated at the last day of the month.

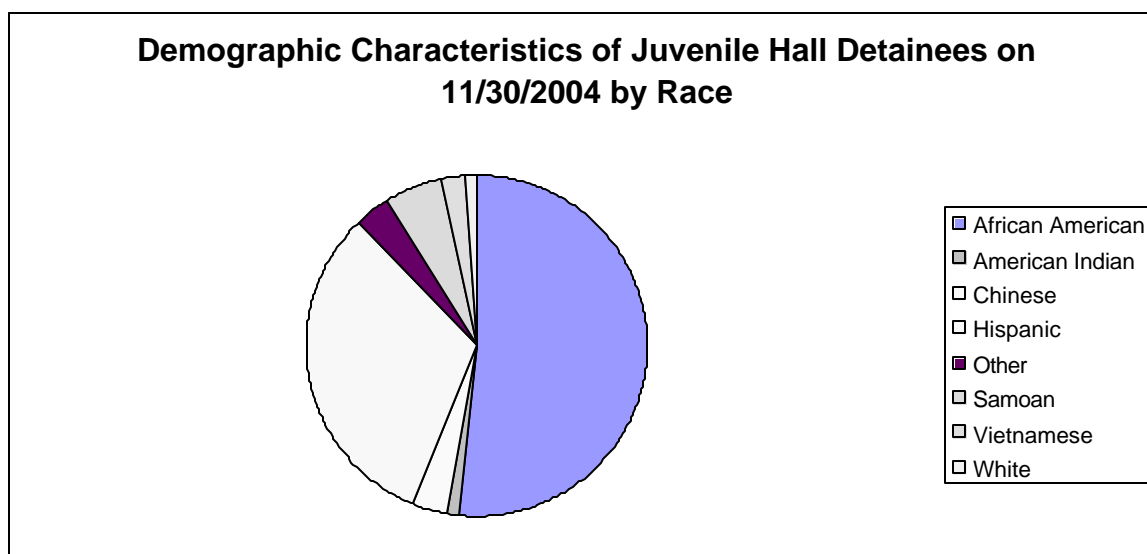
Section III

Demographics

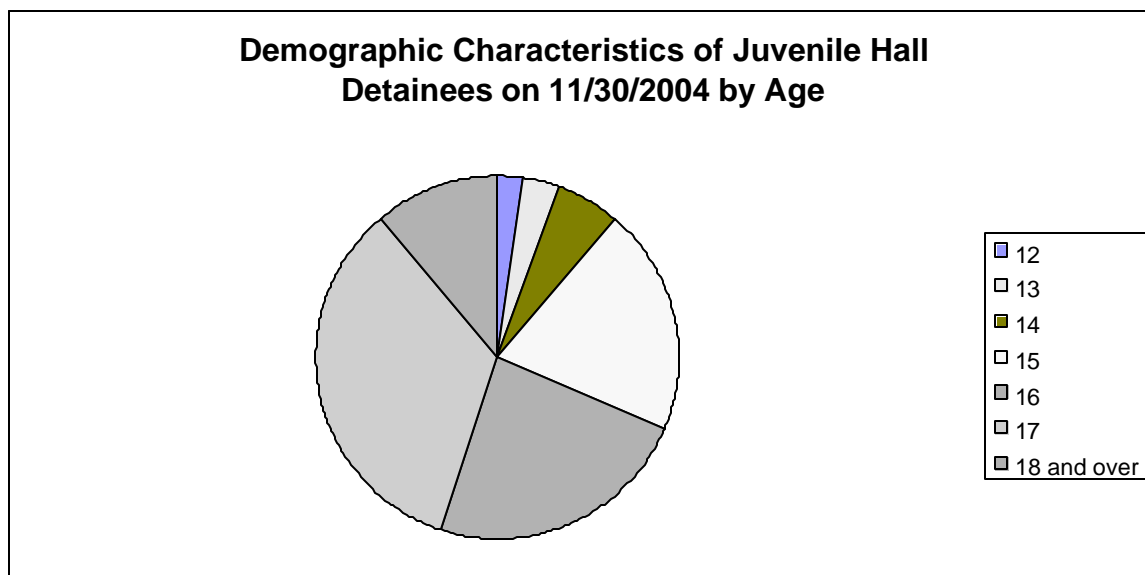
Sex	Frequency	Percent
Female	16	17.98%
Male	73	82.02%
Total	89	100.00%



Race/Ethnic Origin	Frequency	Percent
African American	46	51.69%
American Indian	1	1.12%
Chinese	3	3.37%
Hispanic	28	31.46%
Other	3	3.37%
Samoan	5	5.62%
Vietnamese	2	2.25%
White	1	1.12%
Total	89	100.00%

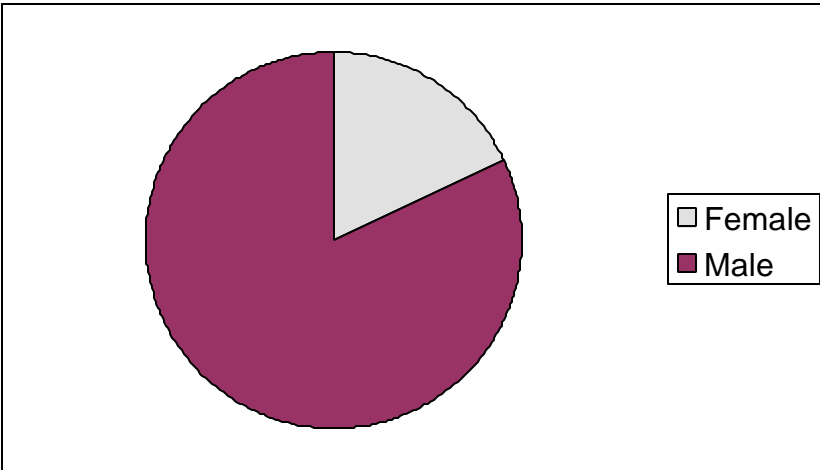


Age	Frequency	Percent
12	2	2.25%
13	3	3.37%
14	5	5.62%
15	18	20.22%
16	21	23.60%
17	30	33.71%
18 and over	10	11.24%
Total	89	100.00%



Demographic Characteristics of Juvenile Hall Detainees
on 11/30/2004
Age by Sex

Age	Female	Male	Total	
12	0	2	2	2.25%
13	0	3	3	3.37%
14	0	5	5	5.62%
15	2	16	18	20.22%
16	7	14	21	23.60%
17	4	26	30	33.71%
18 and over	3	7	10	11.24%
Total	16	73	89	100.00%
	17.98%	82.02%	100.00%	



Demographic Characteristics
Of Juvenile Hall Detainees on November 30th, 2004

Geographic Residence of Youth	Frequency	Percent
Marina	1	1.1
North of Market/Downtown	2	2.2
Western Addition	10	11.2
South of Market/Tenderloin	3	3.4
Sunset	3	3.4
Haight Ashbury/Castro	2	2.2
Inner Mission	11	12.4
Potrero	3	3.4
Parkside	3	3.4
Ingleside (West of Twin Peaks)	2	2.2
Outer Mission	13	14.6
Bayview	16	18.0
Non-San Francisco and Unavailable*	20	22.5
	-----	-----
Total	89	100.0

*Non-San Francisco and Unavailable	Frequency	Percent
ANTIOCH	1	5.0
ANZA	1	5.0
DALY CITY	2	10.0
LAKEPORT	1	5.0
OAKLAND	5	25.0
PASO ROBLES	1	5.0
SANTA CLARA	1	5.0
SUNNYVALE	1	5.0
UNAVAILABLE	7	35.0
	-----	-----
Total	20	100.0

Demographic Characteristics
Of Juvenile Hall Detainees on November 30th, 2004

Race/Ethnic Origin by Sex

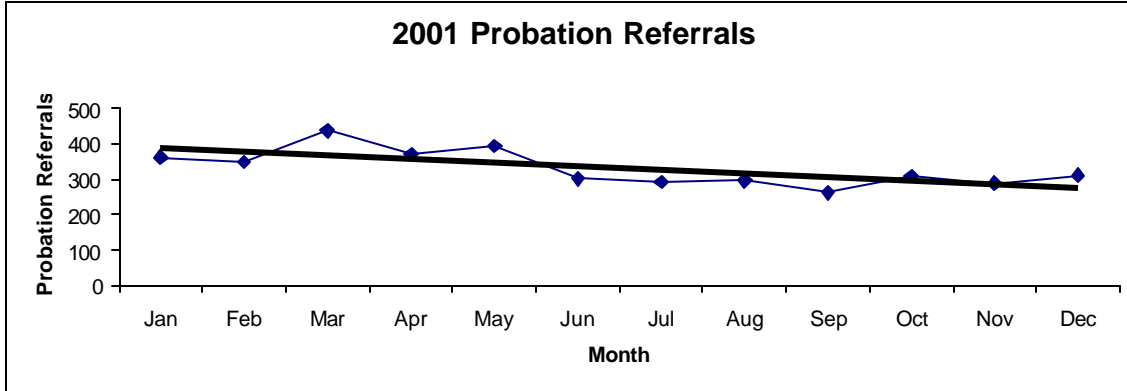
RACE	Count	SEX		Row Total
		Female F	Male M	
AFRICAN AMERICAN	10	36	46	51.7
CHINESE		3	3	3.4
HISPANIC	4	24	28	31.5
AMERICAN INDIAN		1	1	1.1
OTHER		3	3	3.4
SAMOAN	2	3	5	5.6
VIETNAMESE		2	2	2.2
WHITE		1	1	1.1
Column Total	16 18.0	73 82.0	89 100.0	

Section IV

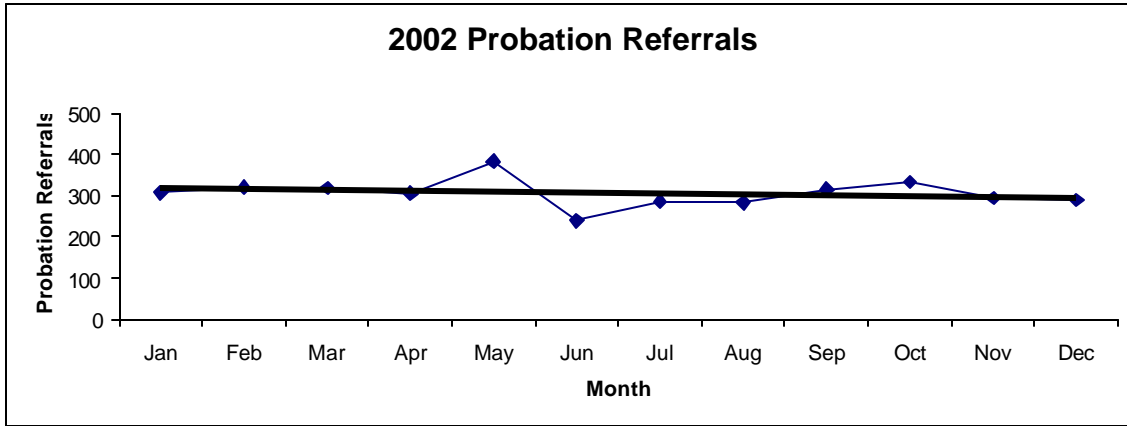
Historical Information

San Francisco Juvenile Probation
Probation Referrals (all sources) By Month
 (2001-2003)

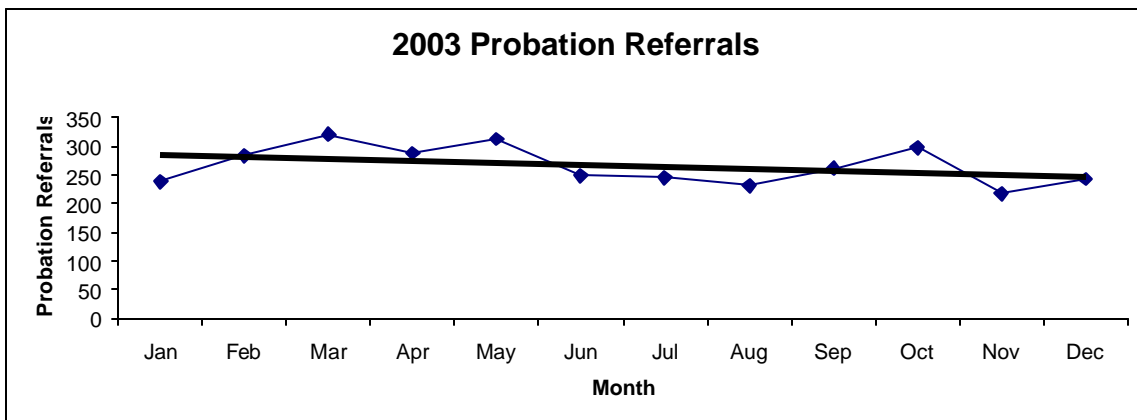
2001 Probation Referrals	Jan	Feb	Mar	Apr	May	Jun	Jul	Aug	Sep	Oct	Nov	Dec	Total
	361	348	437	370	394	301	292	296	262	309	287	311	3968



2002 Probation Referrals	Jan	Feb	Mar	Apr	May	Jun	Jul	Aug	Sep	Oct	Nov	Dec	Total
	308	320	318	305	384	240	286	283	315	333	294	289	3675

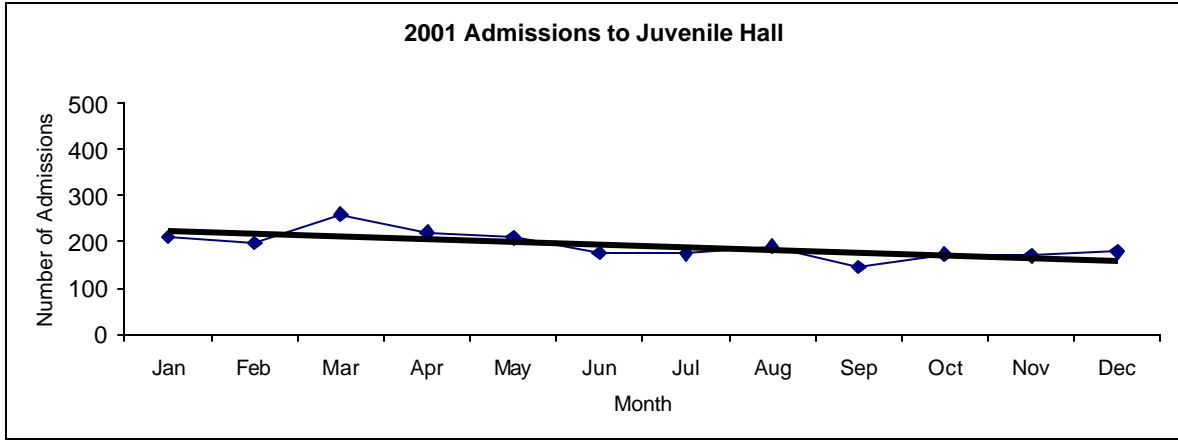


2003 Probation Referrals	Jan	Feb	Mar	Apr	May	Jun	Jul	Aug	Sep	Oct	Nov	Dec	Total
	238	283	320	288	313	248	245	231	261	297	218	243	3185

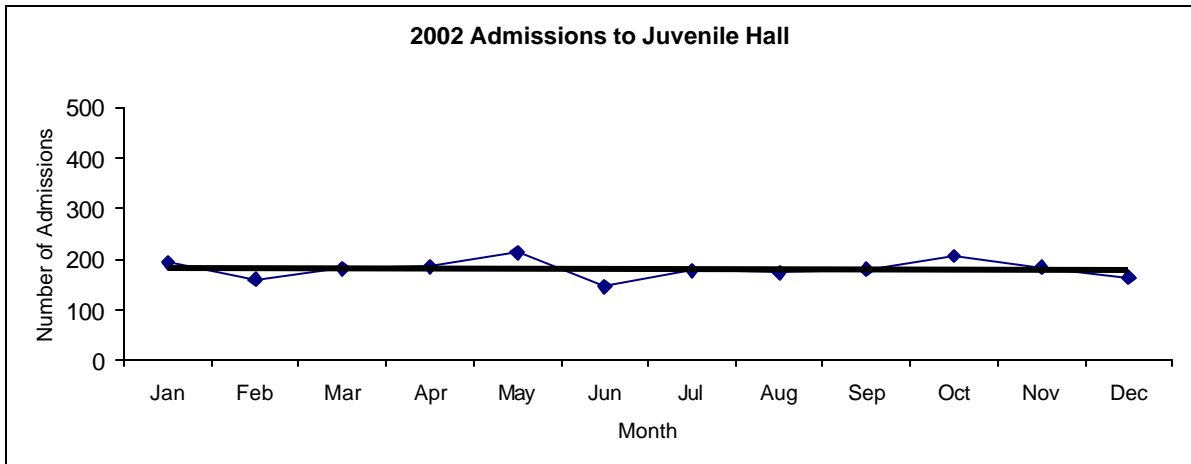


San Francisco Juvenile Probation
Juvenile Hall Admissions By Month
 (Calendar Years 2001-2003)

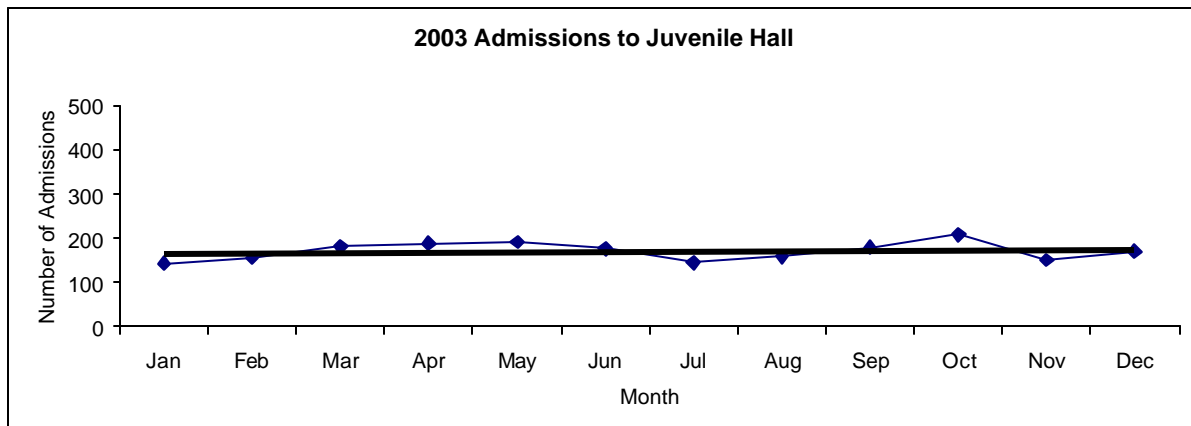
2001 Admissions	Jan	Feb	Mar	Apr	May	Jun	Jul	Aug	Sep	Oct	Nov	Dec	Total
	210	197	260	220	209	176	174	190	145	173	170	178	2302



2002 Admissions	Jan	Feb	Mar	Apr	May	Jun	Jul	Aug	Sep	Oct	Nov	Dec	Total
	193	160	181	185	213	145	177	173	179	206	183	164	2159

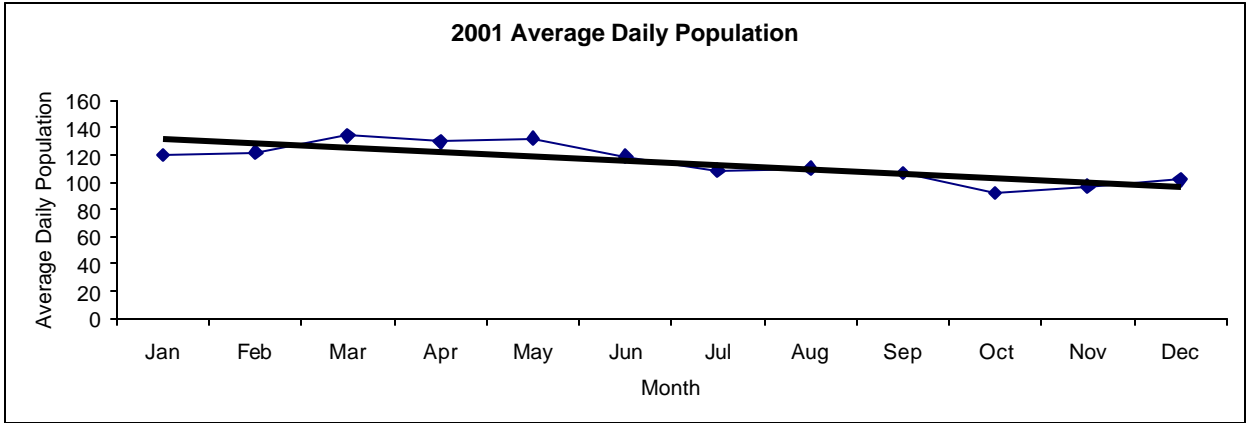


2003 Admissions	Jan	Feb	Mar	Apr	May	Jun	Jul	Aug	Sep	Oct	Nov	Dec	Total
	144	156	181	189	191	176	145	158	179	208	151	170	2048

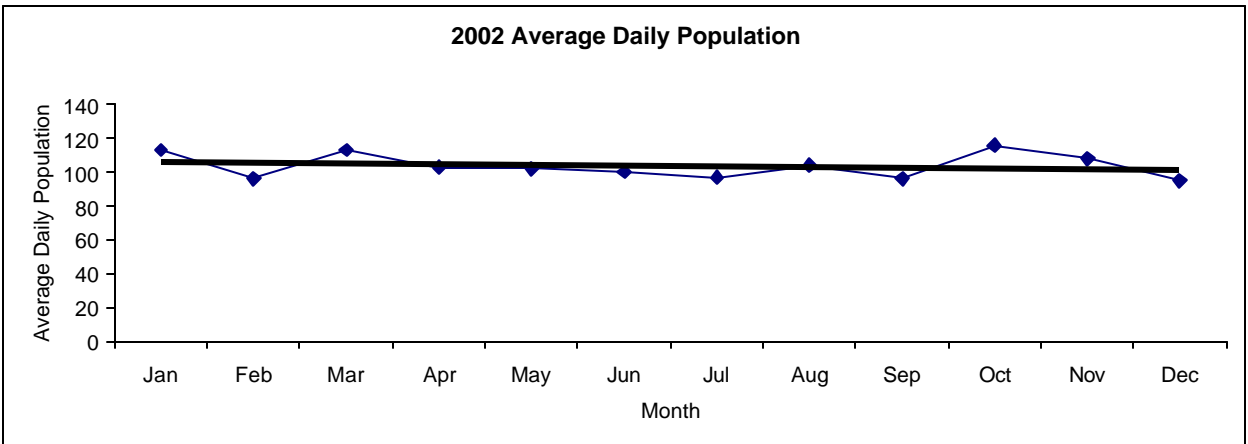


San Francisco Juvenile Probation
Juvenile Hall Average Daily Population By Month
 (Calendar Years 2001-2003)

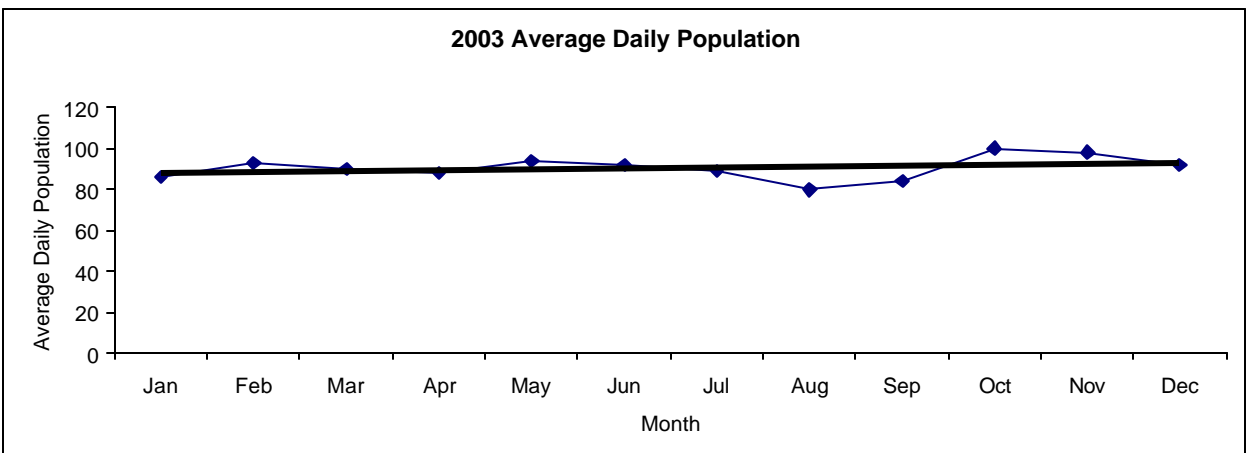
2001 Avg. Daily Pop.	Jan	Feb	Mar	Apr	May	Jun	Jul	Aug	Sep	Oct	Nov	Dec	Total
	120	122	134	130	132	119	109	110	107	92	97	102	115



2002 Avg. Daily Pop.	Jan	Feb	Mar	Apr	May	Jun	Jul	Aug	Sep	Oct	Nov	Dec	Total
	113	96	113	103	102	100	97	104	96	116	108	95	104

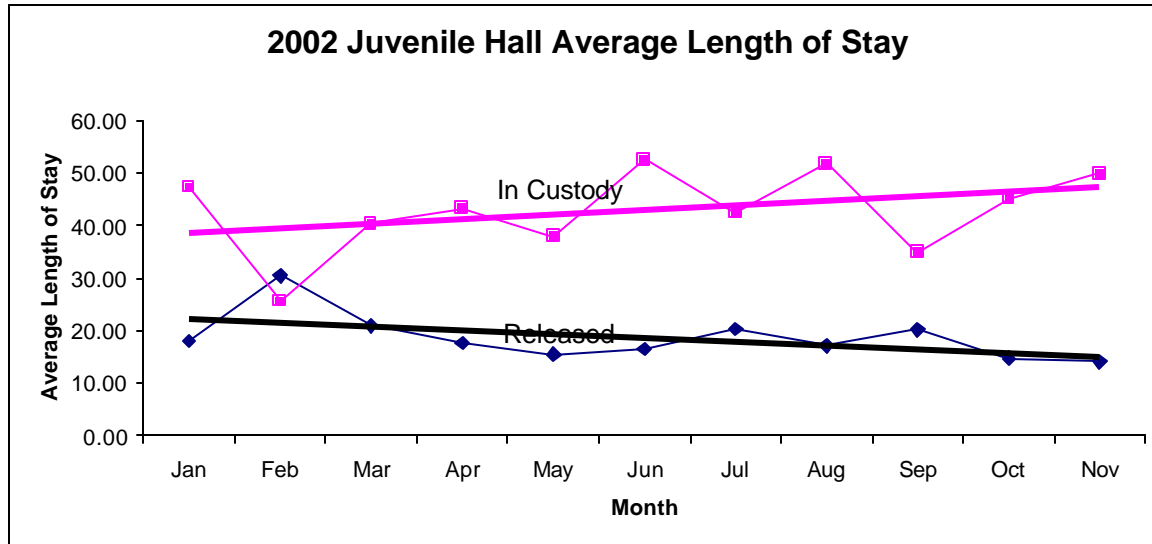


2003 Avg. Daily Pop.	Jan	Feb	Mar	Apr	May	Jun	Jul	Aug	Sep	Oct	Nov	Dec	Total
	86	93	90	88	94	92	89	80	84	100	98	92	91

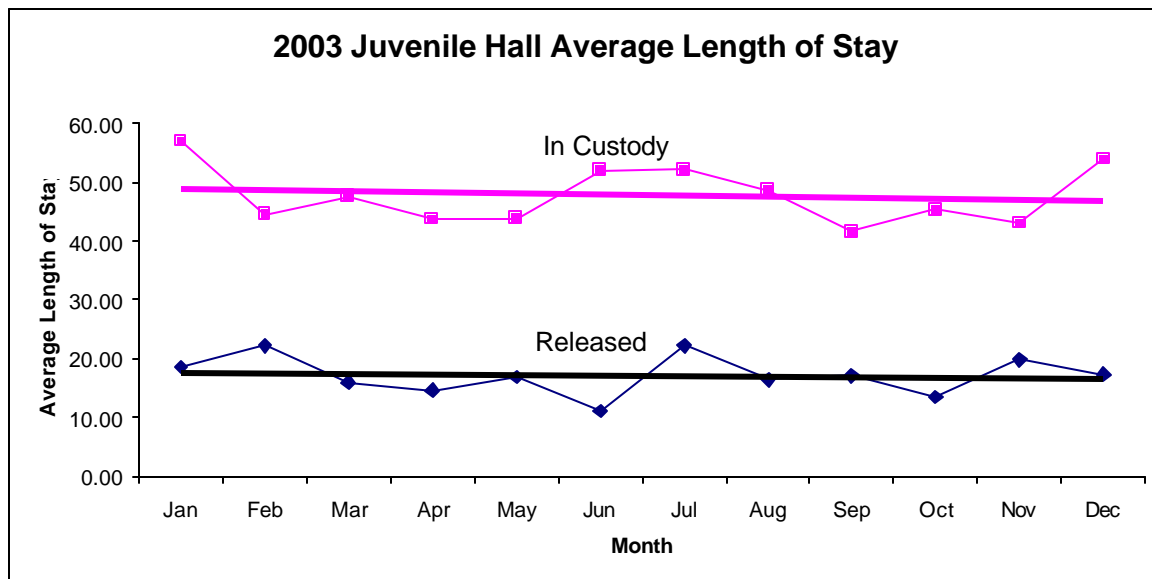


San Francisco Juvenile Probation
Juvenile Hall Average Length of Stay By Month
 (Calendar Years 2002-2003)

2002 Avg. Length of Stay	Jan	Feb	Mar	Apr	May	Jun	Jul	Aug	Sep	Oct	Nov	Dec	Total
¹ Released	18.05	30.44	20.88	17.65	15.50	16.45	20.22	17.15	20.16	14.67	14.03	18.30	18.63
² In Custody	47.30	25.63	40.35	43.29	37.86	52.57	42.41	51.77	34.82	45.11	49.85	58.85	44.15



2003 Avg. Length of Stay	Jan	Feb	Mar	Apr	May	Jun	Jul	Aug	Sep	Oct	Nov	Dec	Total
¹ Released	18.58	22.16	15.97	14.65	16.86	11.07	22.21	16.41	17.13	13.51	19.87	17.30	17.14
² In Custody	56.97	44.53	47.63	43.78	43.80	51.98	52.13	48.67	41.61	45.30	43.04	53.96	47.78



Notes: Less than one day of stay is calculated as one day.

¹ Length of stay is calculated according to release date for those who are released.

² For those still in custody, length of stay is calculated at the last day of the month.