

City and County of San Francisco



Juvenile Probation Department

Monthly Report for March 2005

Presented to the Juvenile Probation Commission

April 27th, 2005

Prepared by Jose Luis Perla
Information Technology Director
(415) 753-7686
jose.perla@sfgov.org

Table of Contents

Section I Summary Reports

Juvenile Hall, Log Cabin Ranch Summary Statistics.....	1
Community Programs Summary Statistics	2
Probation Services Summary Statistics.....	4

Section II Current Month General Detail

Probation Referrals, Juvenile Admissions And Average Daily Population	6
Juvenile Hall Admissions and Average Daily Population.....	7
Commitments to out-of-home placement.....	8
Commitments to California Youth Authority.....	9
Log Cabin Ranch Admissions and Average Daily Population.....	10
Probation Referrals	11
Juvenile Hall And Log Cabin Ranch Incident Report	12
Juvenile Hall And Log Cabin Ranch Grievances Report.....	13
Bay Area Resident Juvenile Hall Comparison	14
Juvenile Hall Admissions.....	15
Juvenile Hall Detainees by Detention Reason.....	16
Juvenile Hall Average Daily Population by Rated Capacity.....	17
Juvenile Hall Average Length of Stay	18

Section III Demographics

Juvenile Hall Detainees by Sex and Race/Ethnic Origin.....	19
Juvenile Hall Detainees by Age	20
Juvenile Hall Detainees by Age and Sex.....	21
Juvenile Hall Detainees by Geographic Residence of Youth.....	22
Juvenile Hall Detainees by Race/Ethnic Origin and Sex.....	23

Section IV
Historical Information

2002-2004 Probation Referrals24
2002-2004 Juvenile Hall Admissions25
2002-2004 Juvenile Hall Average Daily Population.....26
2003-2004 Juvenile Hall Average Length of Stay by Month.....27



Section I

Summary Reports

Summary Report for the Month of March 2005

Juvenile Hall	<i>February 2004</i>	<i>February 2005</i>	<i>March 2004</i>	<i>March 2005</i>	<i>YTD 2004</i>	<i>YTD 2005</i>
Admissions	180	145	189	169	561	482
Average Daily Population	101	114	103	109	101	107
Average Length of Stay (Releases)	10.58	18.75	21.86	22.60	15.49	18.81
Average Length of Stay (In Custody)	57.73	45.54	49.20	42.98	53.09	43.35
Releases	166	146	192	178	539	460
Log Cabin Ranch						
Admissions:						
First Time Commitments	3	4	1	6	6	12
Recommitments	0	0	0	0	0	0
<i>Total</i>	3	4	1	6	6	12
Releases:						
Graduated	2	2	3	0	7	5
Escape	0	0	0	0	0	0
Other releases	0	1	1	0	1	1
<i>Total</i>	2	3	4	0	8	6
Average Daily Population	19	13	19	15	19	13
Grievances Filed						
Juvenile Hall:						
B1	0	0	0	2	1	2
B2	2	5	0	1	8	10
B3	1	3	0	2	1	5
B4	1	1	0	0	1	1
B5	0	2	0	1	2	12
G2 (CO-ED)	0	0	0	0	2	0
<i>Total</i>	4	11	0	6	15	30
Log Cabin Ranch	0	0	0	0	0	0
Incident Reports						
Juvenile Hall	10	18	10	13	33	40
Log Cabin Ranch	0	0	0	0	0	0
<i>Total</i>	10	18	10	13	33	40

Summary Report for the Month of March 2005

*Data was not available from Community Programs Division and it was not reported to IT.

Community Programs	<i>Program Vacancies by Agency on March 2005</i>	<i>Active in program February 2004</i>	<i>Active in Program February 2005</i>	<i>Active in Program March 2004</i>	<i>Active in Program March 2005</i>
IHBS Monthly Client Count					
BayView Hunters Point Foundation	*	*	*	*	*
Chinatown Youth Center	*	*	*	*	*
Morrisania West, Inc.	*	*	*	*	*
Samoan Community Development Center	*	*	*	*	*
Potrero Hill Neighborhood House	*	*	*	*	*
Instituto Familiar de La Raza	*	*	*	*	*
Vietnamese Youth Development Center	*	*	*	*	*
Brothers Against Guns	*	*	*	*	*
<i>Total</i>	*	*	*	*	*
<i>March 2005 Percent Program Utilization</i>	*				
<i>March 2005 Percent Change from last report</i>	*				

Summary Report for TANF and Girls Programs

***Data was not available from Community Programs Division and it was not reported to IT.**

PROGRAM	ANNUAL GOAL	NUMBER SERVED
California Community Dispute Services: Youth Accountability Boards	*	*
CARECEN: Tattoo Removal and Case Management	*	*
Center for Young Women's Development: Girls Services	*	*
Community Works – Girls Diversion Program	*	*
Community Works – Girls Therapeutic Arts Curriculum in Juvenile Hall	*	*
Community Works – ROOTS Support for Children of Incarcerated Parents	*	*
Edgewood Kinship Support Network	*	*
Family Restoration House: Life Skills	*	*
Girls 2000: Girls Services and Family Support Services	*	*
Instituto Familiar de la Raza – Case Management	*	*
Mission Neighborhood Center: Young Queens on the Rise – Girls Services	*	*
Performing Arts Workshop: Arts Education at Impact High School	*	*
SAGE: Girls Services	*	*
Samoan Community Development Center: Anger Management	*	*
Special Services for Groups – Occupational Therapy Training Program	*	*
United Way/Girls Justice Initiative: Detention-based Case Management & Inside Mentoring Program	* *	* *
Urban Services YMCA: Bayview Beacon Truancy Support	*	*
YGCIC GED & Focus Vocational Programs	*	*
YWCA – CITS and FITS Girls Mentorship	*	*

Summary Report for the Month of March 2005

Probation Services	<i>February 2005</i>	<i>March 2005</i>	<i>Year To Date 2005</i>
Probation Referrals	210	258	694
Petitions	91	111	331
Selected Court Dispositions:			
California Youth Authority	1	1	2
Log Cabin Ranch	4	5	9
Out of Home Placement	21	19	50
Other Probation	29	29	81
Violation of Probation Petitions Filed	21	25	68
California Youth Authority Monthly Count			
Institutions:			
Males	34	36	
Females	2	2	
Total	36	38	
Parole:			
Males	28	27	
Females	3	3	
Total	31	30	

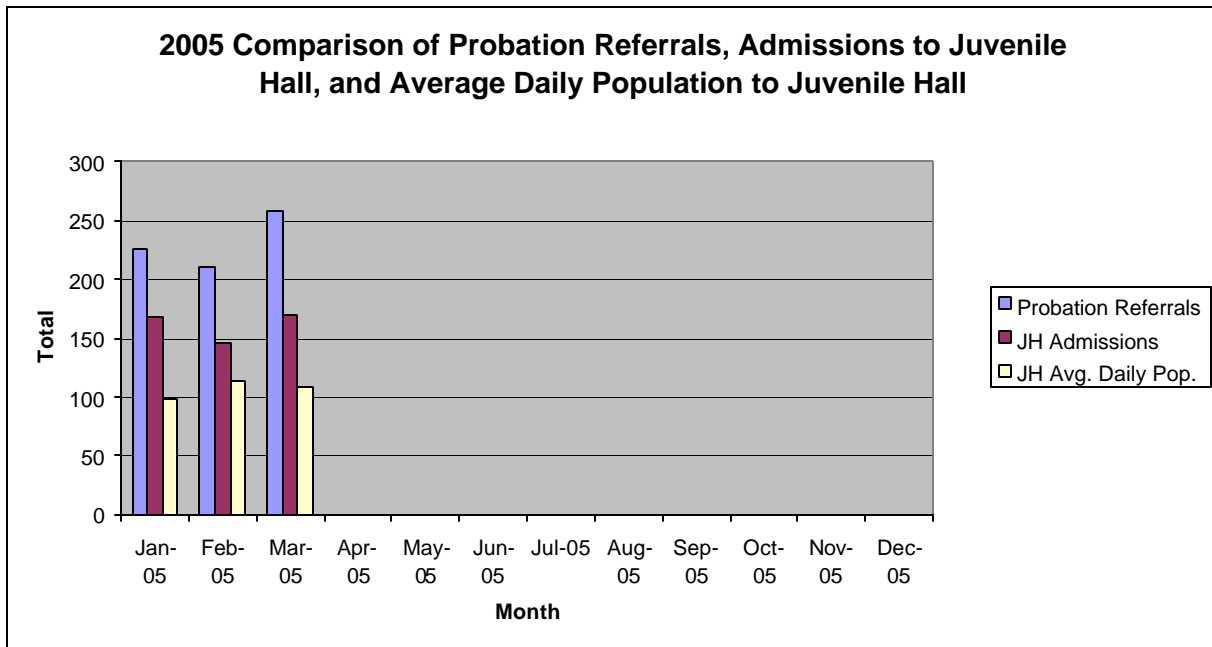
Summary Report for the Month of March 2005

Probation Services			
Caseload List	February 2005	March 2005	March Average # Youth by PO
CARC	200	231	231
Custody Screening Investigation	216	174	21
Probation Services 1	320	320	26
Probation Services 2	160	160	13
Probation Services 3	164	164	23
Probation Services 4	260	260	26
YTEC	30	30	30
<i>Total</i>	1350	1339	52
Special Services Unit	New	Closed	Active at end of Month
Record Sealings	5	10	168
Stepparent Adoptions	2	0	57
Terminations	0	0	12
Marriage Consents	0	0	2
Custody Evaluations	0	0	0
	Entered	Completed	Active at end of Month
Community Service	22	14	1242
		Referred	Completed at end of Month
COPS		0	0
Street Law (still in session)		6	0
Theft Awareness (next class 4/9/05)		0	0
Anger Management for boys (still in session)		18	0
Anger Management for girls (still in session)		10	0
Life Management Skills		3	3
Kids Turn Non-Violent Family Skills (in session)		6	0
Information, Record Checks, Research & Photo Copying Juvenile Records For:	February 2005	March 2005	Year to Date 2005
Job Corps, Probation Departments,			
Military, Law Enforcement,			
Misc., (letters, Memos, Forms, etc.)	105	130	352

Section II
Current Month
General Detail

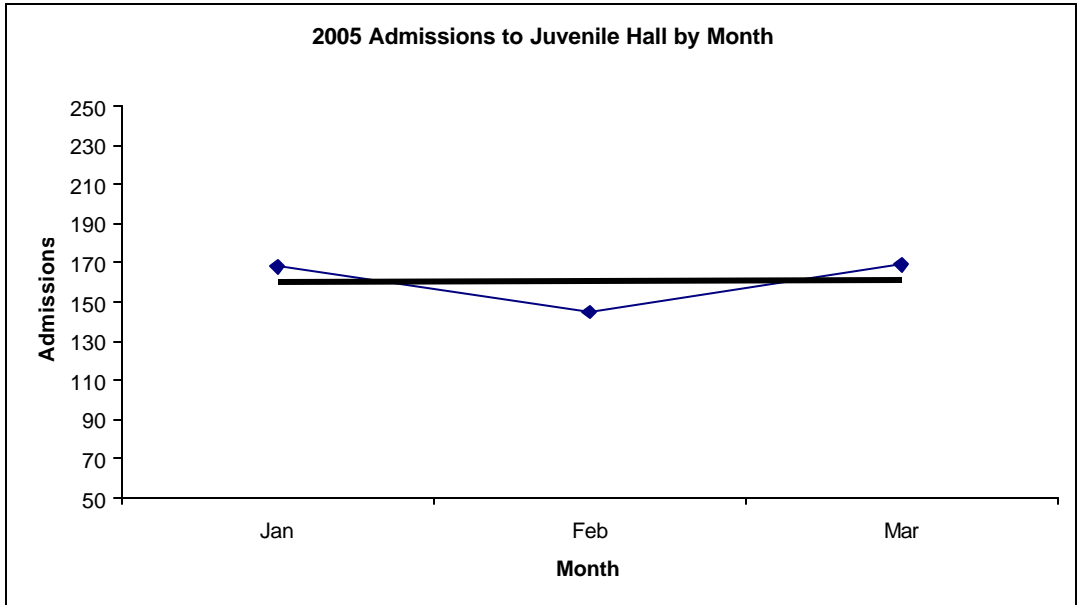
San Francisco Juvenile Probation

	Jan-05	Feb-05	Mar-05	Apr-05	May-05	Jun-05	Jul-05	Aug-05	Sep-05	Oct-05	Nov-05	Dec-05
Probation Referrals	226	210	258									
JH Admissions	168	145	169									
JH Avg. Daily Pop.	98	114	109									

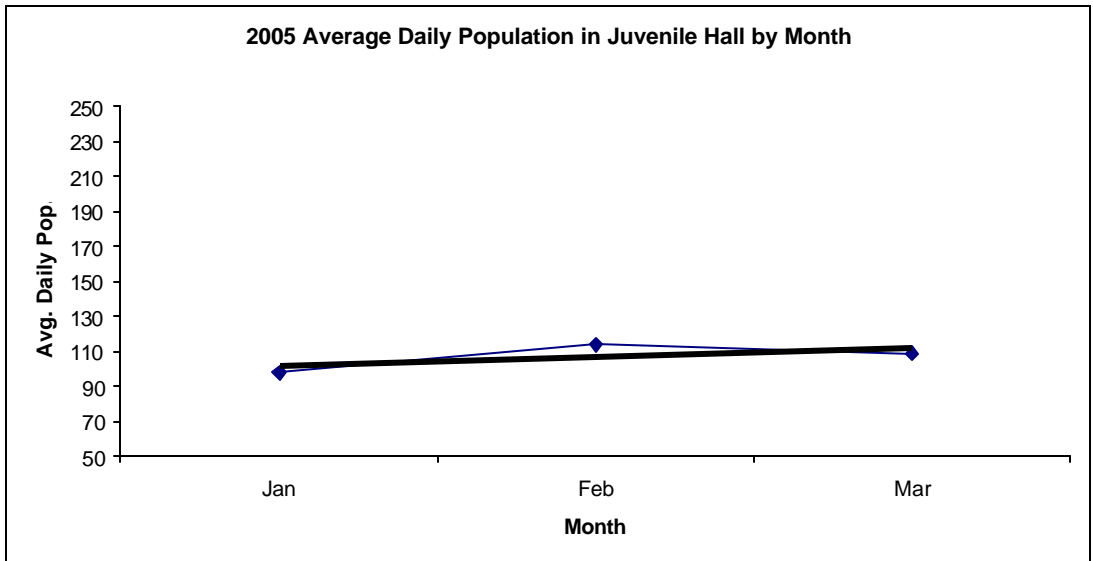


San Francisco Juvenile Probation Admissions and Average Daily Population In Juvenile Hall (Calendar Year 2005)

Admissions	Jan	Feb	Mar	Apr	May	Jun	Jul	Aug	Sep	Oct	Nov	Dec	Total
2005	168	145	169										482



Avg. Daily Pop.	Jan	Feb	Mar	Apr	May	Jun	Jul	Aug	Sep	Oct	Nov	Dec	Total
2005	98	114	109										107

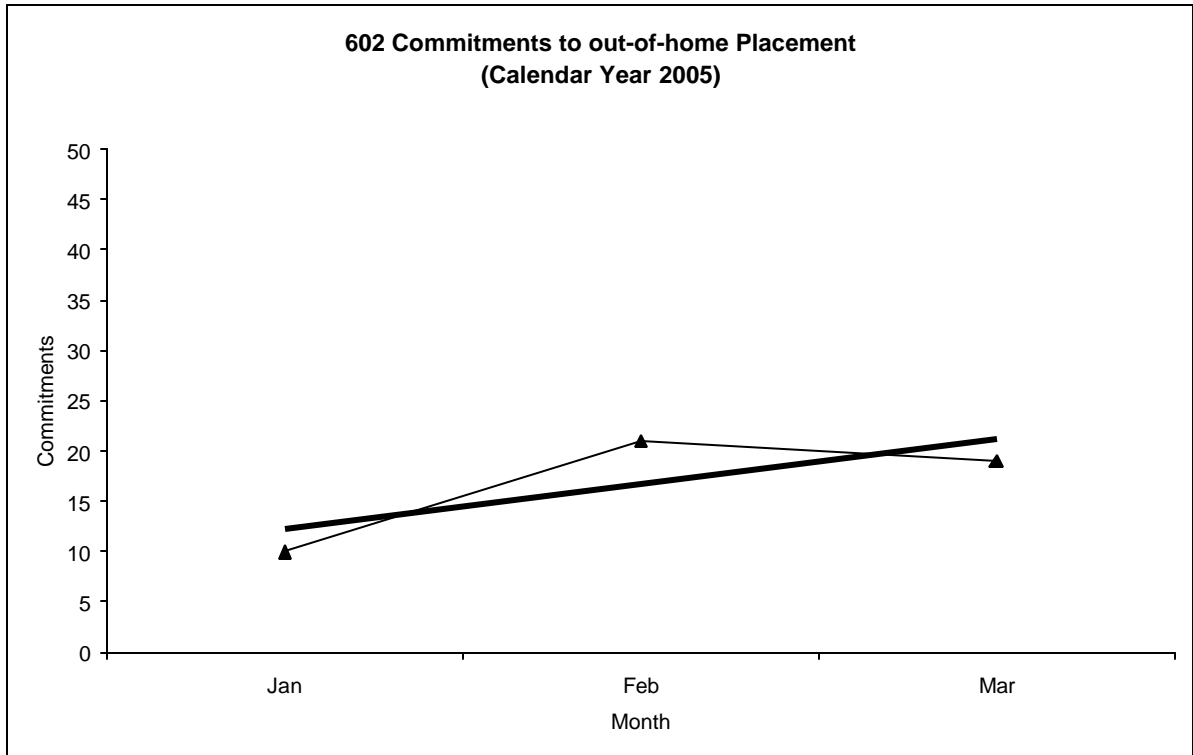


Out-of-Home Placement¹

Commitments of 602's

Calendar Year 2005

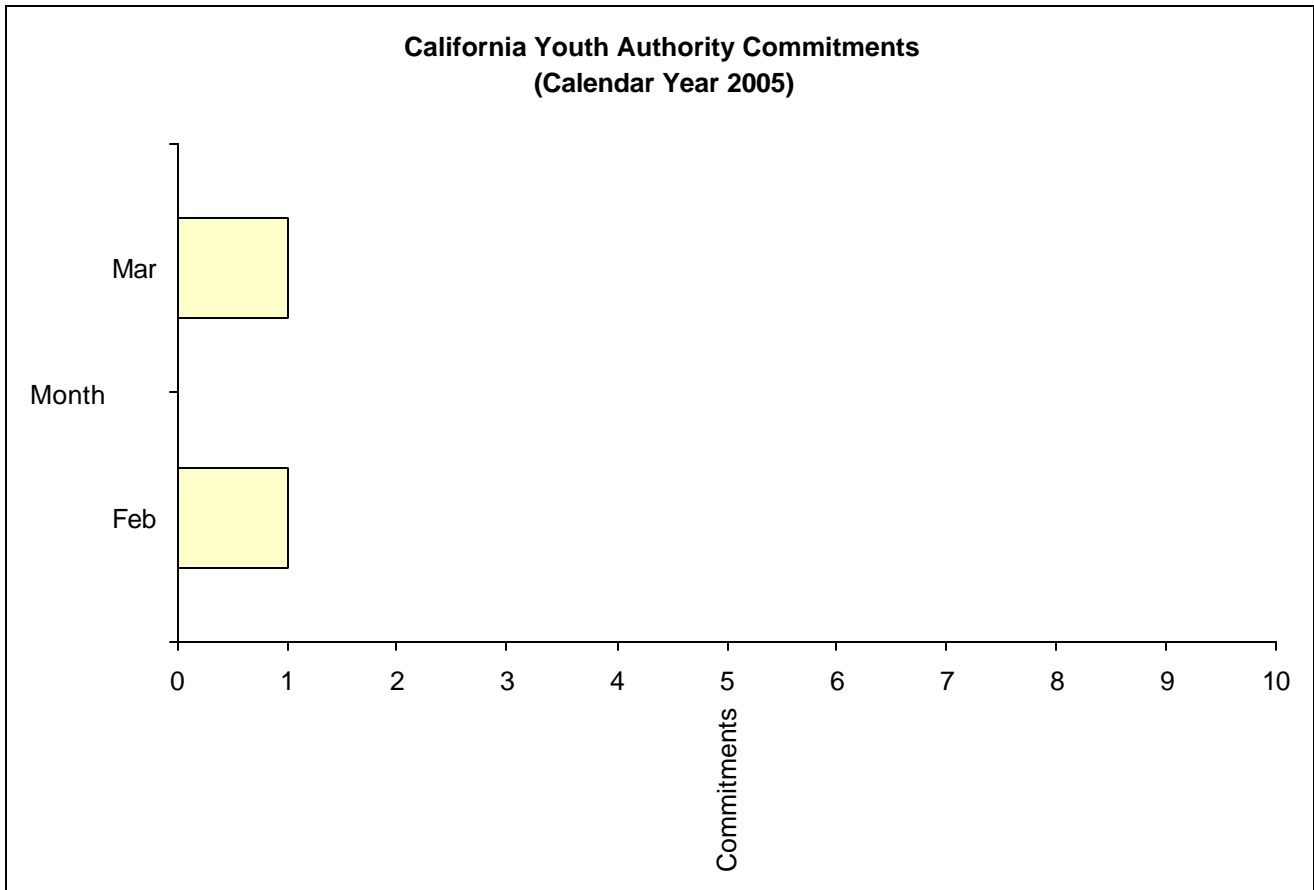
Commitments	Jan	Feb	Mar	Apr	May	Jun	Jul	Aug	Sep	Oct	Nov	Dec	Total
2005	10	21	19										50



¹ This report is based on 602 Commitments to out-of-home placements. If there is a 601 commitment, it will show as a footnote here. Figures are regularly updated to include reports from previous reporting periods.

California Youth Authority Commitments (Calendar Year 2005)

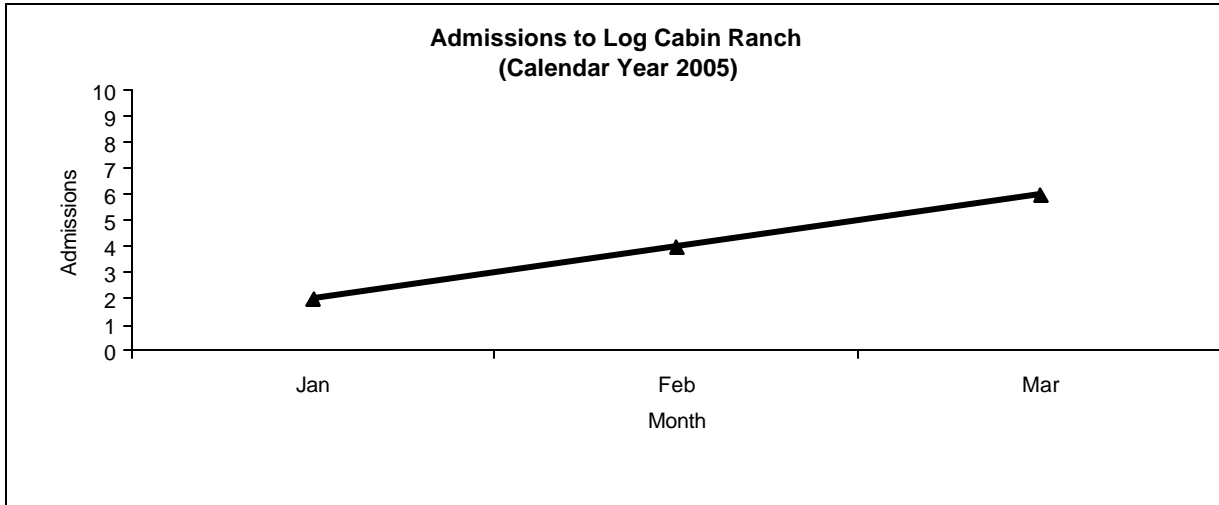
Commitments	Jan	Feb	Mar	Apr	May	Jun	Jul	Aug	Sep	Oct	Nov	Dec	Total
2005	0	1	1										2



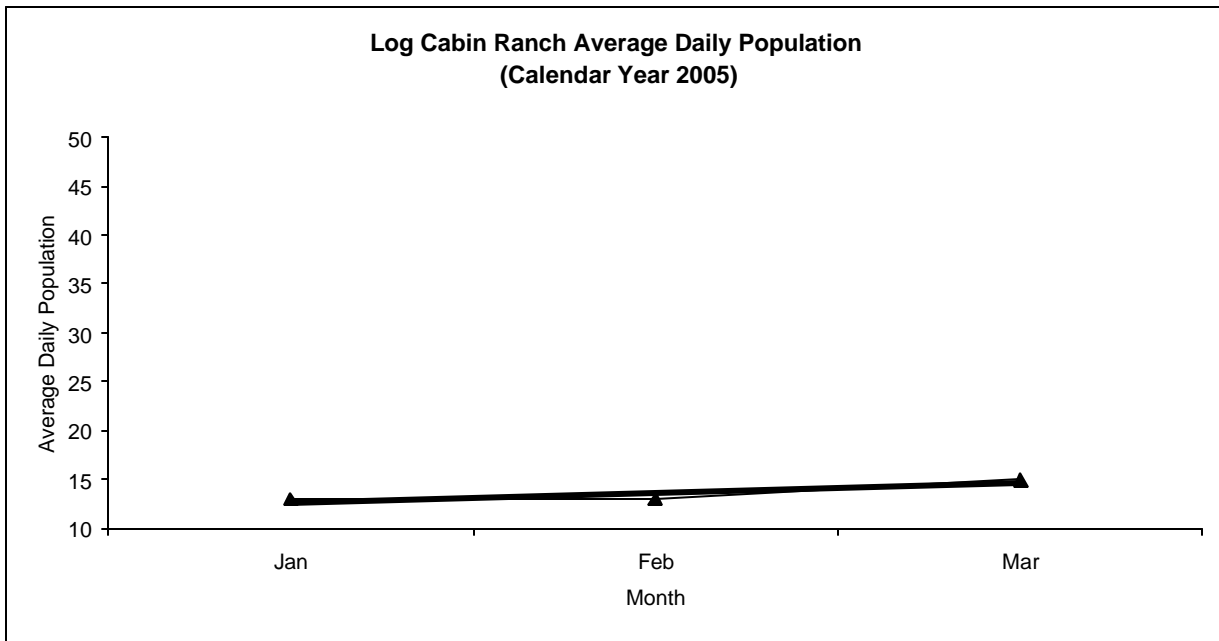
Log Cabin Ranch

Admissions and Average Daily Population (Calendar Year 2005)

Admissions	Jan	Feb	Mar	Apr	May	Jun	Jul	Aug	Sep	Oct	Nov	Dec	Total
2005	2	4	6										12



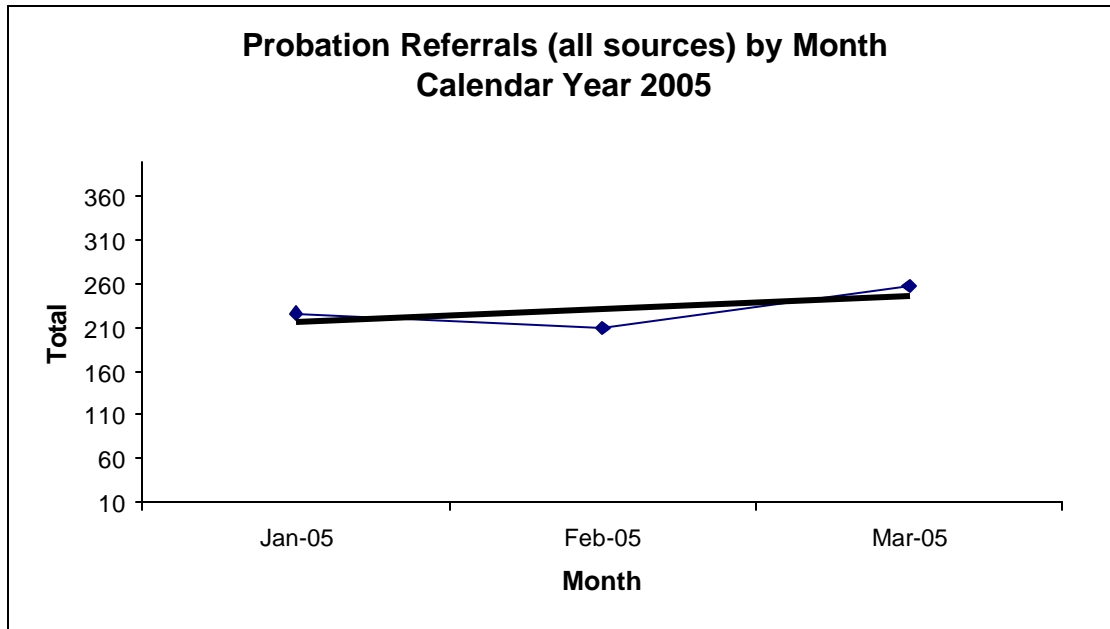
Avg. Daily Pop.	Jan	Feb	Mar	Apr	May	Jun	Jul	Aug	Sep	Oct	Nov	Dec	Total
2005	13	13	15										13.67



Probation Referrals by Month Calendar Year 2005

Probation Referrals (all sources) by Month (602 W&I)

Jan-05	226
Feb-05	210
Mar-05	258
Apr-05	
May-05	
Jun-05	
Jul-05	
Aug-05	
Sep-05	
Oct-05	
Nov-05	
Dec-05	



SAN FRANCISCO JUVENILE PROBATION DEPARTMENT
 MONTHLY INCIDENT REPORT FORM
 MONTH/YEAR: MARCH 2005

Log Cabin Ranch	Battery on Staff	Injury to Staff due to Restraint of Minor	Fight	Battery Youth on Youth	Attempted Escape	AWOL	Attempted Suicide	Serious Contraband (Weapon Illegal Drug)
	0	0	0	0	0	0	0	0
	Battery on Staff with Injury	Fire	Fight with Injury	Battery Youth on Youth with Injury	Escape	Death	Suicide	Major Property Destruction
	0	0	0	0	0	0	0	0
Juvenile Hall	Battery on Staff	Injury to Staff due to Restraint of Minor	Fight	Battery Youth on Youth	Attempted Escape	AWOL	Attempted Suicide	Serious Contraband (Weapon Illegal Drug)
	1	0	6	0	2	0	0	1
	Battery on Staff with Injury	Fire	Fight with Injury	Battery Youth on Youth with Injury	Escape	Death	Suicide	Major Property Destruction
	0	0	2	0	0	0	0	1

Grievances Filed March 2005

San Francisco Juvenile Probation Department

Juvenile Hall



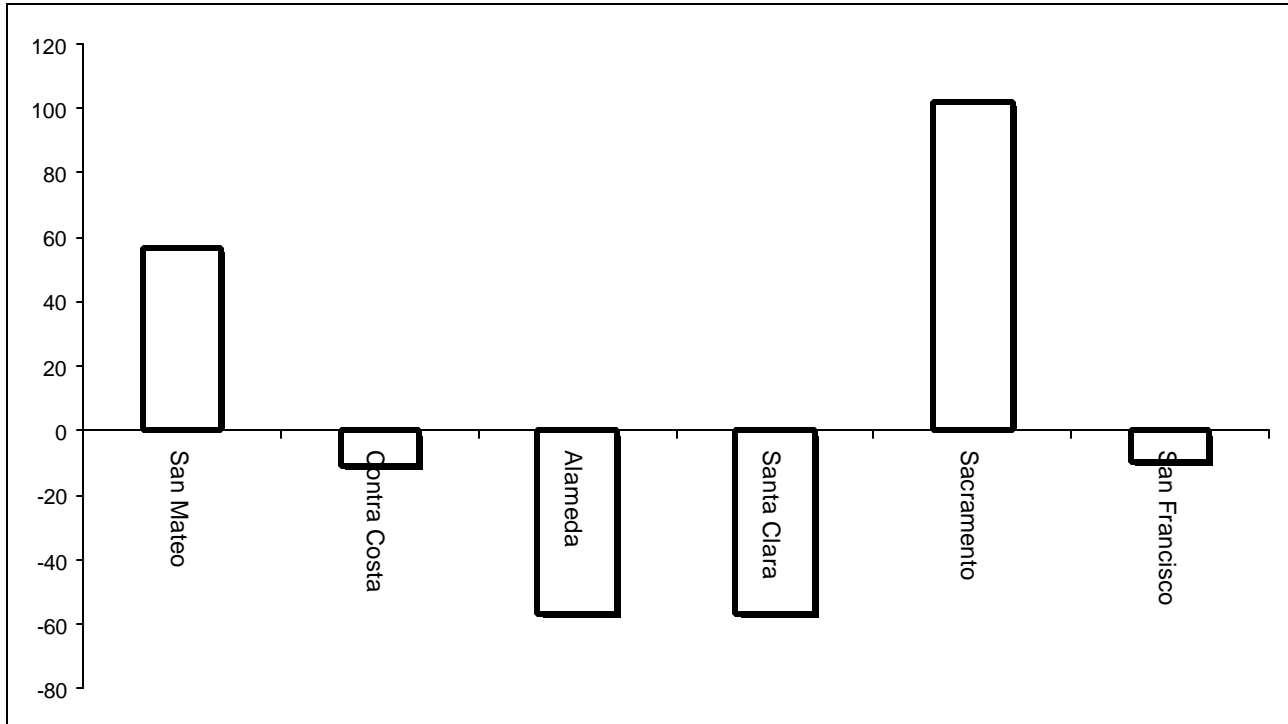
**Grievances Filed March 2005
San Francisco Probation Department
From the office of the Ombudsman.**

<i>Area of Infraction</i>	<i>Title 15 Article/Section</i>	<i>B1</i>	<i>B2</i>	<i>GU/B3</i>	<i>B4</i>	<i>B5</i>	<i>TOTAL</i>
<i>Clothing and Personal Hygiene</i>	<i>10.1486</i>	<i>0</i>	<i>0</i>	<i>0</i>	<i>0</i>	<i>1</i>	<i>1</i>
<i>Food</i>	<i>9.1460</i>	<i>0</i>	<i>1</i>	<i>0</i>	<i>0</i>	<i>0</i>	<i>1</i>
<i>Juvenile Rights</i>	<i>12.2</i>	<i>2</i>	<i>0</i>	<i>2</i>	<i>0</i>	<i>0</i>	<i>4</i>
<i>Total</i>		<i>2</i>	<i>1</i>	<i>2</i>	<i>0</i>	<i>1</i>	<i>6</i>

Log Cabin Ranch

Type	Log Cabin Ranch
Food/Snacks	0
Laundry	0
Personal Property	0
Phone Calls	0
Procedures	0
Head Call	0
Discipline	0
Complaints vs. Staff	0
Cottage Change	0
Medical	0
School	0
Probation	0
Miscellaneous	0
Total	0

Bay Area Resident Juvenile Hall Comparison Over/Under Capacity on April 7th, 2005

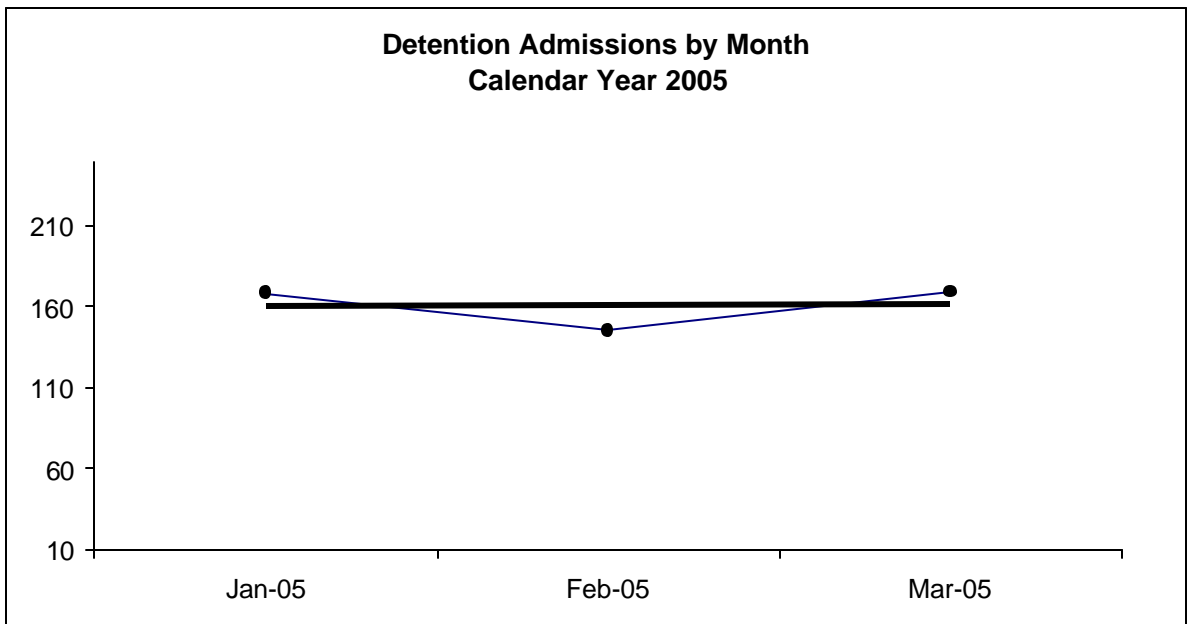


	Rated Capacity	Actual	Over/Under Capacity
San Mateo	130	187	57
Contra Costa	160	149	-11
Alameda	288	231	-57
Santa Clara	329	272	-57
Sacramento	256	358	102
San Francisco	104	94	-10

Juvenile Hall Admissions by Month Calendar Year 2005

Detention Admissions by Month

Jan-05	168
Feb-05	145
Mar-05	169
Apr-05	
May-05	
Jun-05	
Jul-05	
Aug-05	
Sep-05	
Oct-05	
Nov-05	
Dec-05	

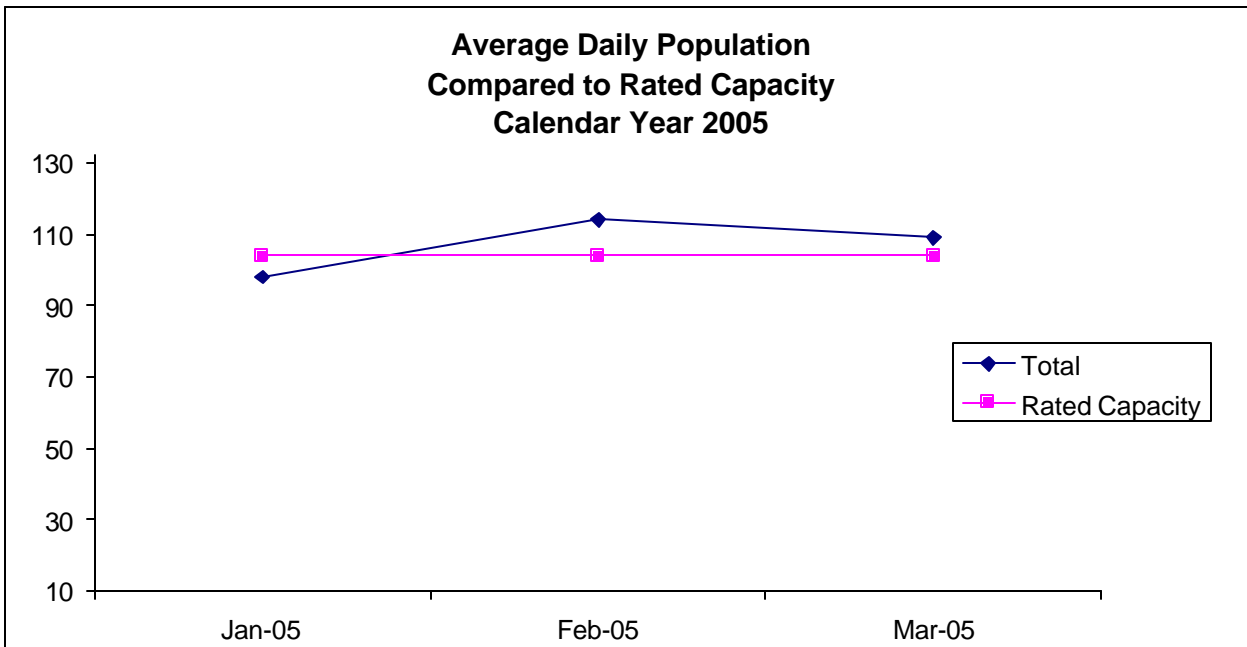


**Characteristics of Juvenile Hall Detainees on March 31st, 2005
Using CJIS Code From the Department of Justice**

Detention Reason	MF	Offense Code	Count	%
ATTEMPTED MURDER:SECOND DEGREE ON PEACE OFFICER	F	664 /187 (A) PC	1	0.97%
ARSON CAUSING GREAT BODILY INJURY	F	451 (A) PC	1	0.97%
RAPE BY FORCE/FEAR/ETC	F	261 (A)(2) PC	1	0.97%
LEWD OR LASCIVIOUS ACTS W/CHILD UNDER 14 YEARS	F	288 (A) PC	1	0.97%
KIDNAPPING	F	207 (A) PC	3	2.91%
ARSON:INHABITED STRUCTURE/PROPERTY	F	451 (B) PC	6	5.83%
ROBBERY	F	212.5 PC	2	1.94%
TRANSPORT/SELL NARCOTIC/CONTROLLED SUBSTANCE	F	11352 (A) HS	7	6.80%
POSSESS/PURCHASE COCAINE BASE FOR SALE	F	11351.5 HS	4	3.88%
MAYHEM	F	203 PC	1	0.97%
BURGLARY	F	459 PC	3	2.91%
WILLFUL CRUELTY TO CHILD:POSSIBLE INJURY/DEATH	F	273 A (A) PC	1	0.97%
ROBBERY:SECOND DEGREE	F	212.5(C) PC	8	7.77%
SEXUAL BATTERY	F	243.4(A) PC	1	0.97%
FORCE OR ADW NOT FIREARM:GBI LIKELY	F	245 (A)(1) PC	7	6.80%
CARRY CONCEALED STOLEN WEAPON	F	12025 (B)(2) PC	1	0.97%
CARRY CONCEALED WEAPON WHILE ENGAGED IN CRIMINAL STREET GANG	F	12025 (B) PC	1	0.97%
SODOMY W/PERSON UNDER 18 YEARS	F	286 (B)(1) PC	1	0.97%
SODOMY	F	286 (A) PC	1	0.97%
BATTERY W/INJURY ON TRANSPORTATION PERSONNEL/PASSENGER	F	243.3 PC	1	0.97%
THREATEN CRIME W/INTENT TO TERRORIZE	F	422 PC	1	0.97%
BURGLARY:SECOND DEGREE	F	459 PC	1	0.97%
GRAND THEFT FROM PERSON	F	487 (C) PC	1	0.97%
TAKE VEHICLE W/O OWNER'S CONSENT/VEHICLE THEFT	F	10851 (A) VC	1	0.97%
RECEIVE/ETC KNOWN STOLEN PROPERTY	F	496 (A) PC	1	0.97%
HIT AND RUN RESULTING IN INJURY	F	20001 (B)(1) VC	1	0.97%
MINOR ILLEGALLY POSSESS CONCEALED WEAPON WITH PRIOR	F	12101 (A)(1) PC	1	0.97%
CARRY CONCEALED WEAPON ON PERSON	M	12025 (A)(2) PC	1	0.97%
THEFT OF PERSONAL PROPERTY	M	484 (A) PC	1	0.97%
LOITER:INTENT:PROSTITUTION	M	653.22(A) PC	1	0.97%
FAIL TO OBEY ORDER OF JUVENILE COURT 602 WI	M	777 (A)(2) WI	12	11.65%
CHANGE OF PLACEMENT/PLACEMENT FAILURE	M	737 WI	4	3.88%
VIOLATION(S) OF HOME SUPERVISION CONDITION	M	628.1 WI	5	4.85%
COURT ORDER		CTORD 602	4	3.88%
BENCH WARRANT		BENCH WARRANT	4	3.88%
WARRANT 602		WRNT602	12	11.65%
		Total	103	100.00%

**Average Daily Population
By Rated Capacity
Calendar Year 2005**

	Total	Rated Capacity
Jan-05	98	104
Feb-05	114	104
Mar-05	109	104
Apr-05		104
May-05		104
Jun-05		104
Jul-05		104
Aug-05		104
Sep-05		104
Oct-05		104
Nov-05		104
Dec-05		104



Juvenile Hall Average Length of Stay

For the Month of March 2005

¹Released

Range of Days	<i>1-10 days</i>	<i>11-20 days</i>	<i>21-30 days</i>	<i>30 or more days</i>	Total
# of Youth Released	93	26	15	44	178
% of Population	71.30%	8.70%	3.80%	16.30%	100%
# of Days	327	386	371	2939	4023
% of Total Days	8.13%	9.59%	9.22%	73.05%	100%
Average Length of Stay	3.52	14.85	24.73	66.80	22.60

²In Custody

Range of Days	<i>1-10 days</i>	<i>11-20 days</i>	<i>21-30 days</i>	<i>30 or more days</i>	Total
# of Youth Detained	36	19	10	38	103
% of Population	38.60%	18.10%	12.60%	30.70%	100%
# of Days	186	273	271	3697	4427
% of Total Days	4.20%	6.17%	6.12%	83.51%	100%
Average Length of Stay	5.17	14.37	27.10	97.29	42.98

Notes: Less than one day of stay is calculated as one day.

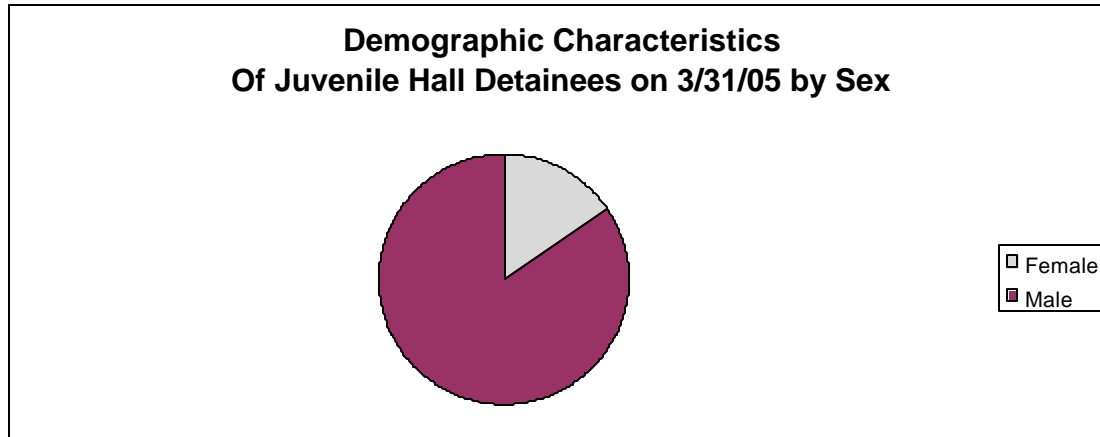
¹Length of stay is calculated according to release date for those who are released.

²For those still in custody, length of stay is calculated at the last day of the month.

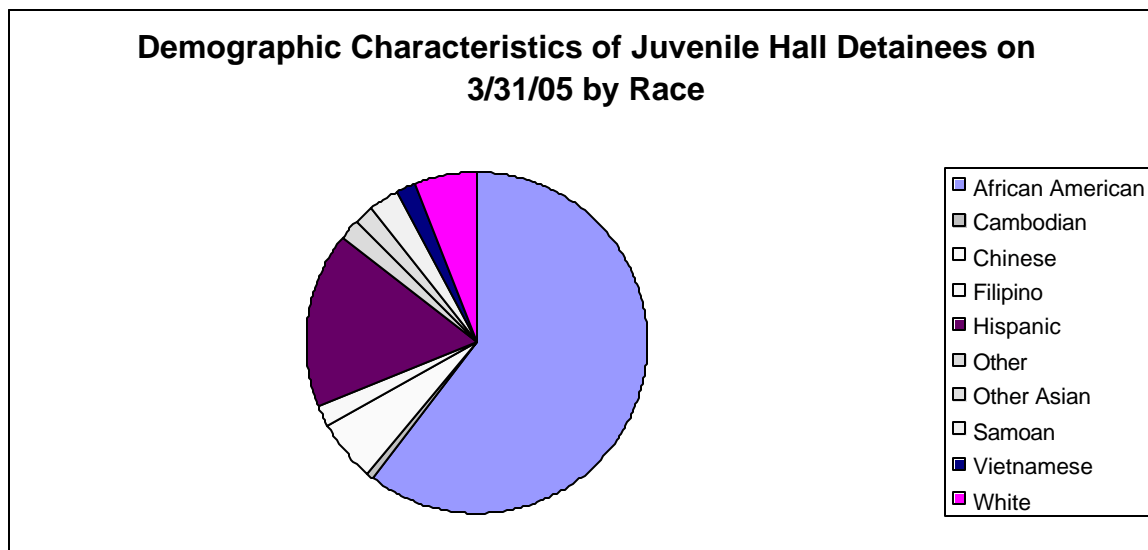
Section III

Demographics

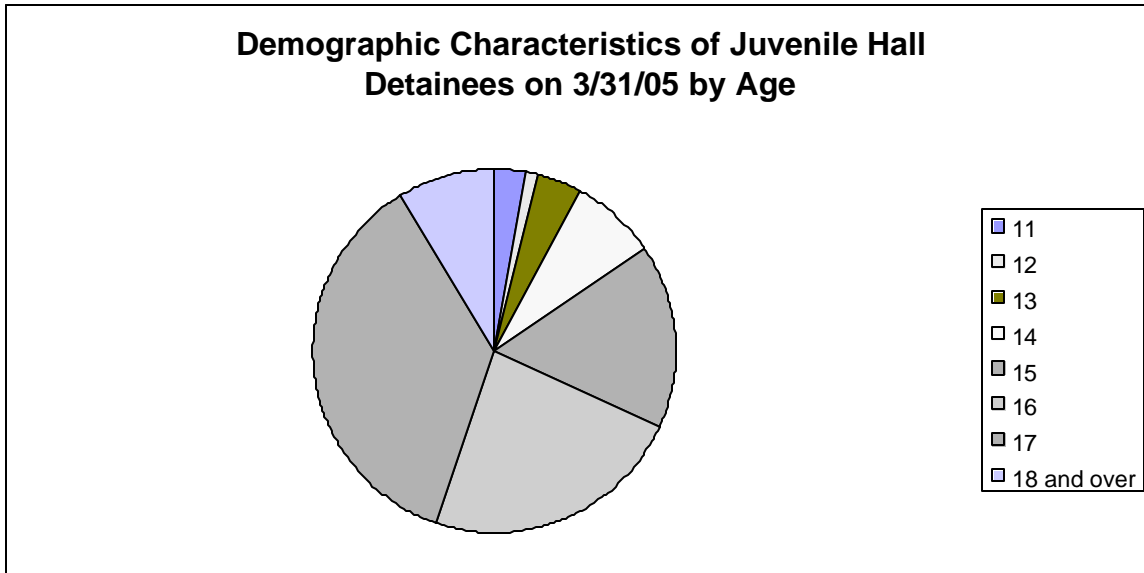
Sex	Frequency	Percent
Female	16	15.53%
Male	87	84.47%
Total	103	100.00%



Race/Ethnic Origin	Frequency	Percent
African American	62	60.19%
Cambodian	1	0.97%
Chinese	6	5.83%
Filipino	2	1.94%
Hispanic	17	16.50%
Other	2	1.94%
Other Asian	2	1.94%
Samoan	3	2.91%
Vietnamese	2	1.94%
White	6	5.83%
Total	103	100.00%

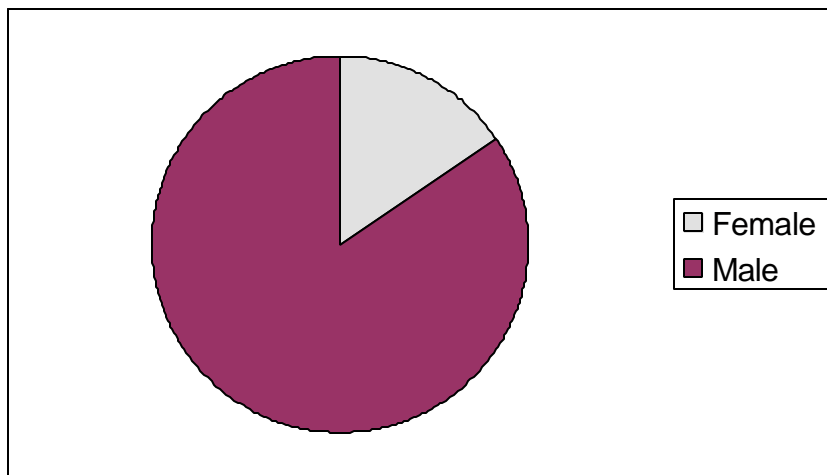


Age	Frequency	Percent
11	3	2.91%
12	1	0.97%
13	4	3.88%
14	8	7.77%
15	17	16.50%
16	24	23.30%
17	37	35.92%
18 and over	9	8.74%
Total	103	100.00%



Demographic Characteristics of Juvenile Hall Detainees
on 3/31/2005
Age by Sex

Age	Female	Male	Total	
11	0	3	3	2.91%
12	0	1	1	0.97%
13	2	2	4	3.88%
14	2	6	8	7.77%
15	3	14	17	16.50%
16	2	22	24	23.30%
17	6	31	37	35.92%
18 and over	1	8	9	8.74%
Total	16	87	103	100.00%
	15.53%	84.47%	100.00%	



Demographic Characteristics
Of Juvenile Hall Detainees on March 31st, 2005

Geographic Residence of Youth	Frequency	Percent
Richmond	4	3.9
North of Market/Downtown	2	1.9
Treasure Island/Yerba Buena	1	1.0
Western Addition	21	20.4
South of Market/Tenderloin	3	2.9
Sunset	3	2.9
Inner Mission	5	4.9
Potrero	2	1.9
Parkside	3	2.9
Ingleside (West of Twin Peaks)	6	5.8
Outer Mission	13	12.6
Bayview	23	22.3
*Non-San Francisco and unavailable	17	16.5
	-----	-----
Total	103	100.0

*Non-San Francisco and unavailable	Frequency	Percent
BENECIA	1	5.9
CONWAY	1	5.9
FAIRFIELD	1	5.9
HAYWARD	1	5.9
HONDURAS	1	5.9
LAKEPORT	1	5.9
MEXICO	1	5.9
OAKLAND	1	5.9
RICHMOND	4	23.5
TACOMA	1	5.9
UNAVAILABLE	4	23.5
	-----	-----
Total	17	100.0

Demographic Characteristics
Of Juvenile Hall Detainees on March 31st, 2005

Race/Ethnic Origin by Sex

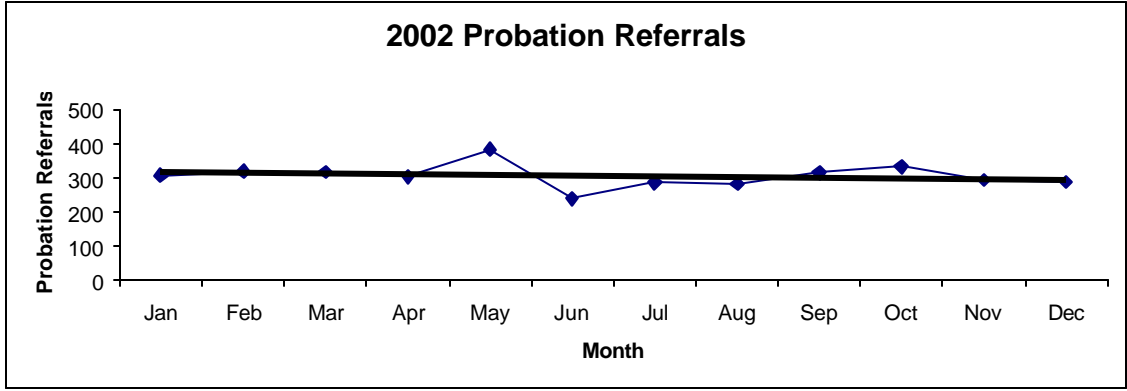
RACE	Count	SEX		Row Total/%
		Female	Male	
		F	M	
OTHER ASIAN	2			2 1.9
AFRICAN AMERICAN	8	54		62 60.2
CHINESE			6	6 5.8
CAMBODIAN	1			1 1.0
FILIPINO			2	2 1.9
HISPANIC	2	15		17 16.5
OTHER	2			2 1.9
SAMOAN			3	3 2.9
VIETNAMESE	1	1		2 1.9
WHITE			6	6 5.8
Column Total	16 15.5	87 84.5		103 100.0

Section IV

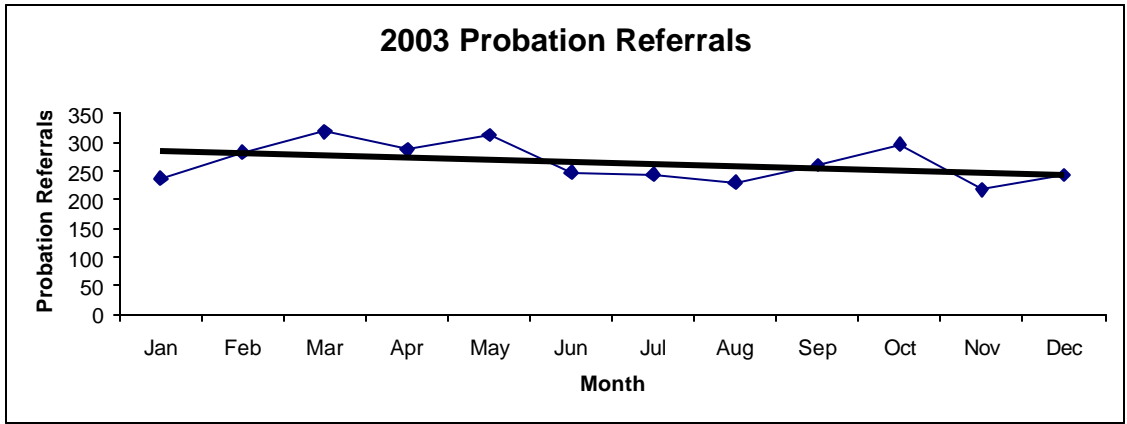
Historical Information

San Francisco Juvenile Probation
Probation Referrals (all sources) By Month
 (2002-2004)

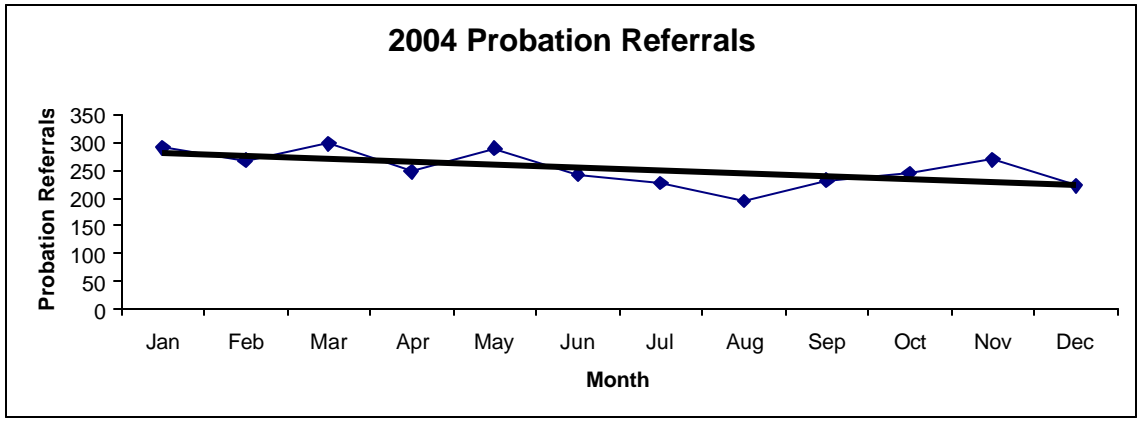
2002 Probation Referrals	Jan	Feb	Mar	Apr	May	Jun	Jul	Aug	Sep	Oct	Nov	Dec	Total
	308	320	318	305	384	240	286	283	315	333	294	289	3675



2003 Probation Referrals	Jan	Feb	Mar	Apr	May	Jun	Jul	Aug	Sep	Oct	Nov	Dec	Total
	238	283	320	288	313	248	245	231	261	297	218	243	3185

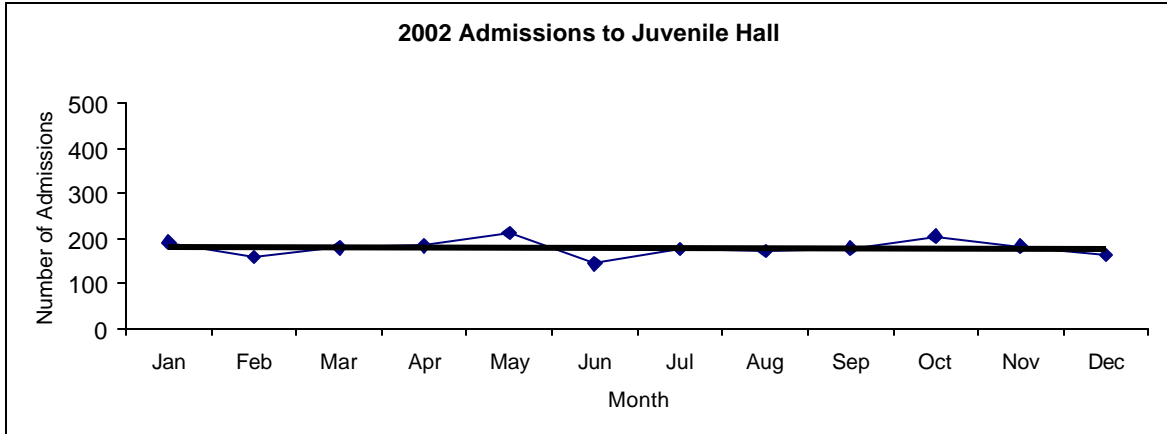


2004 Probation Referrals	Jan	Feb	Mar	Apr	May	Jun	Jul	Aug	Sep	Oct	Nov	Dec	Total
	291	268	298	247	289	243	227	195	232	245	269	222	3026

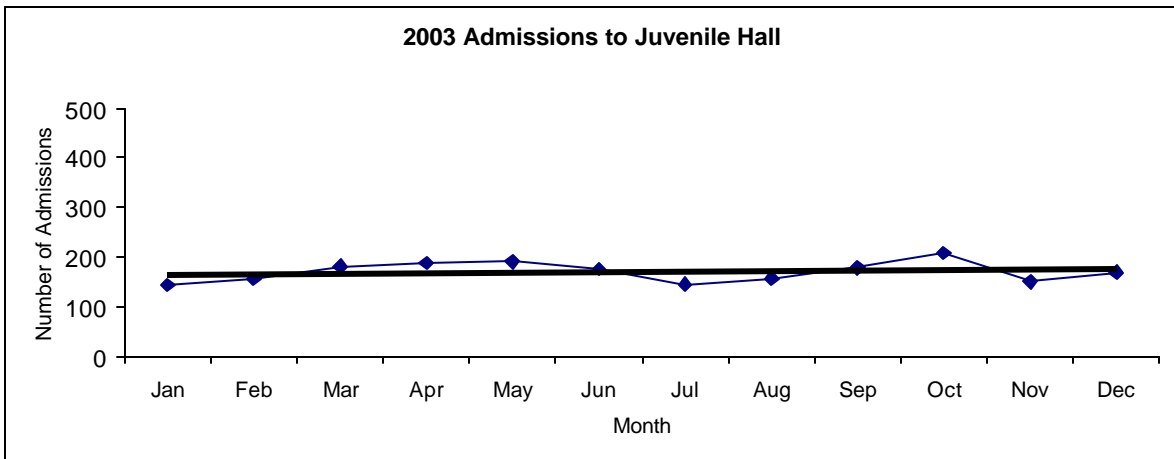


San Francisco Juvenile Probation
Juvenile Hall Admissions By Month
 (2002-2004)

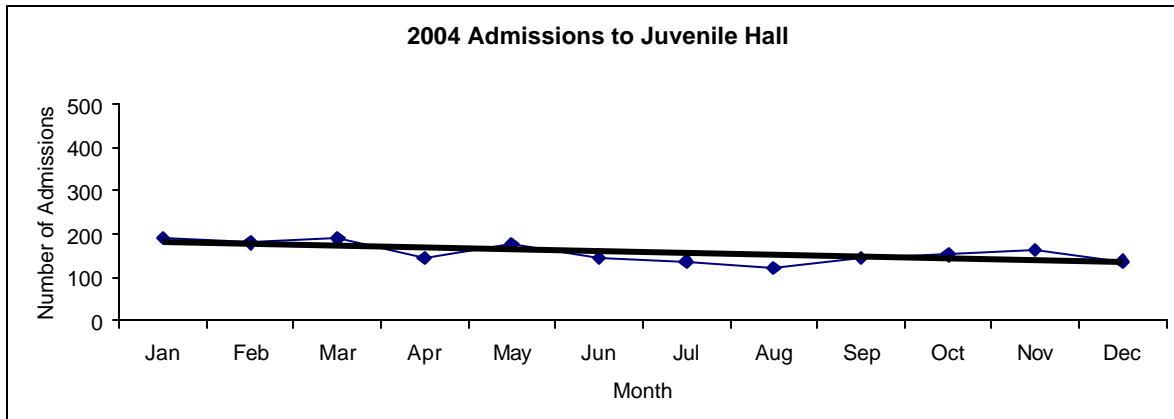
2002 Admissions	Jan	Feb	Mar	Apr	May	Jun	Jul	Aug	Sep	Oct	Nov	Dec	Total
	193	160	181	185	213	145	177	173	179	206	183	164	2159



2003 Admissions	Jan	Feb	Mar	Apr	May	Jun	Jul	Aug	Sep	Oct	Nov	Dec	Total
	144	156	181	189	191	176	145	158	179	208	151	170	2048

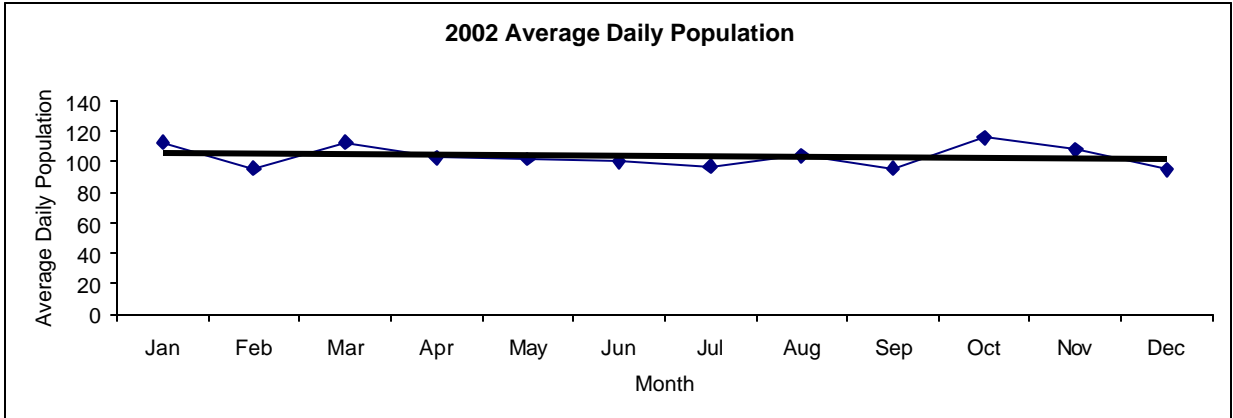


2004 Admissions	Jan	Feb	Mar	Apr	May	Jun	Jul	Aug	Sep	Oct	Nov	Dec	Total
	191	180	189	144	177	145	137	121	144	152	163	137	1880

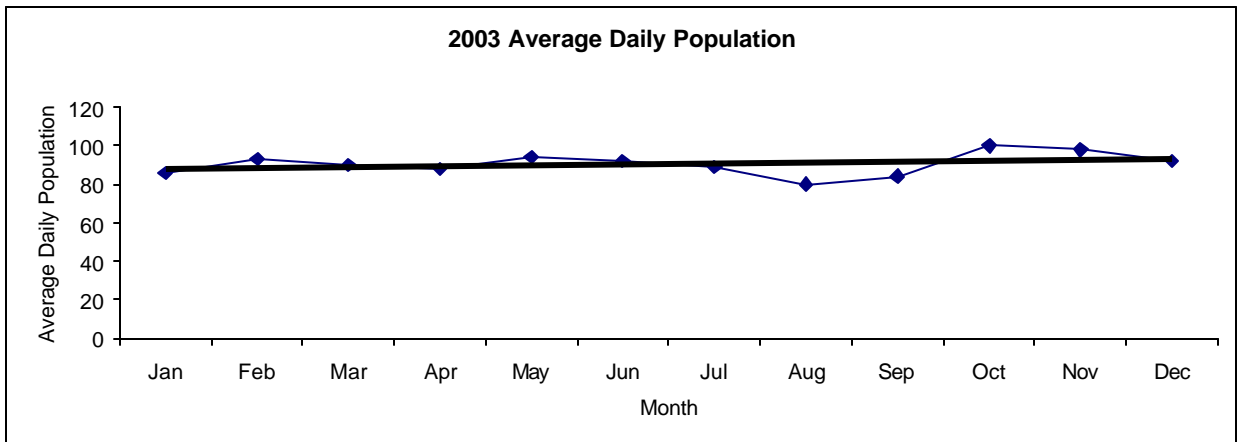


**San Francisco Juvenile Probation
 Juvenile Hall Average Daily Population By Month
 (Calendar Years 2002-2004)**

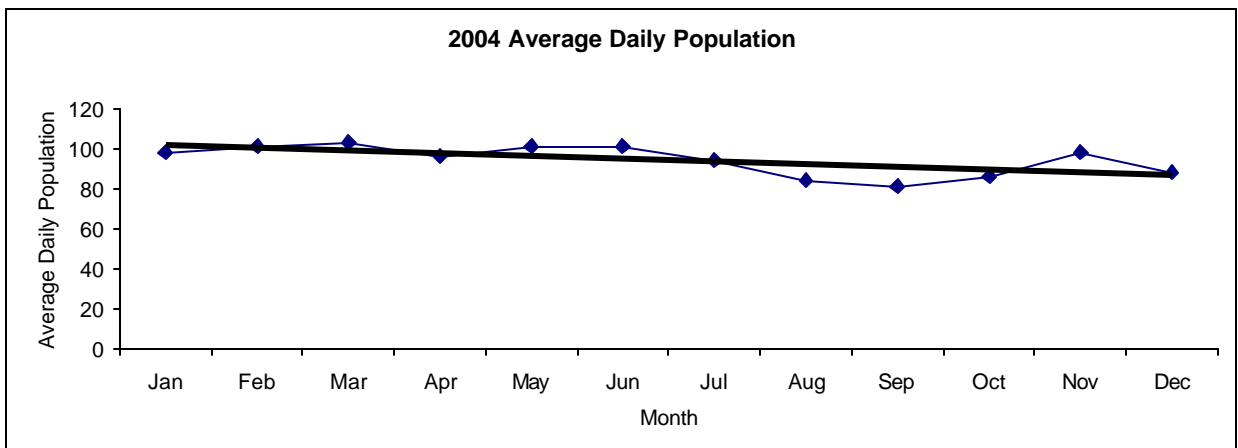
2002 Avg. Daily Pop.	Jan	Feb	Mar	Apr	May	Jun	Jul	Aug	Sep	Oct	Nov	Dec	Total
	113	96	113	103	102	100	97	104	96	116	108	95	104



2003 Avg. Daily Pop.	Jan	Feb	Mar	Apr	May	Jun	Jul	Aug	Sep	Oct	Nov	Dec	Total
	86	93	90	88	94	92	89	80	84	100	98	92	91

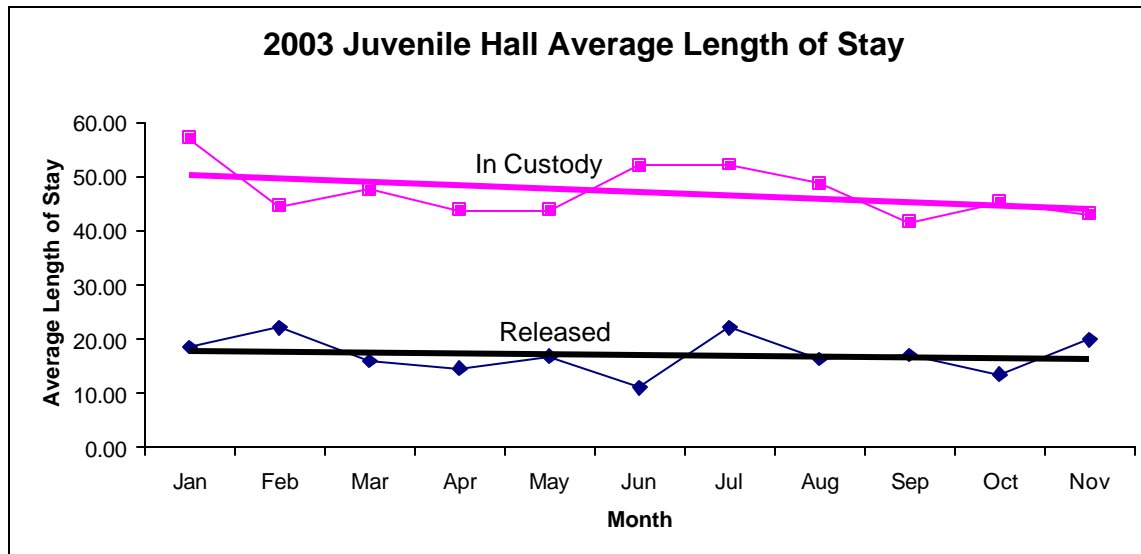


2004 Avg. Daily Pop.	Jan	Feb	Mar	Apr	May	Jun	Jul	Aug	Sep	Oct	Nov	Dec	Total
	98	101	103	96	101	101	94	84	81	86	98	88	94

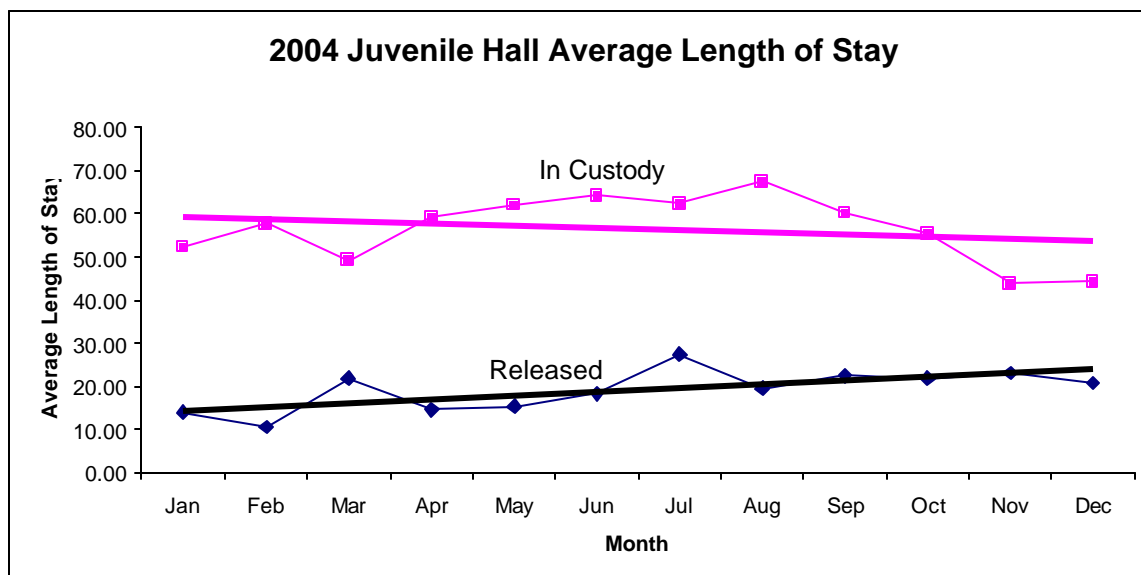


San Francisco Juvenile Probation
Juvenile Hall Average Length of Stay By Month
 (Calendar Years 2003-2004)

2003 Avg. Length of Stay	Jan	Feb	Mar	Apr	May	Jun	Jul	Aug	Sep	Oct	Nov	Dec	Total
¹ Released	18.58	22.16	15.97	14.65	16.86	11.07	22.21	16.41	17.13	13.51	19.87	17.30	17.14
² In Custody	56.97	44.53	47.63	43.78	43.80	51.98	52.13	48.67	41.61	45.30	43.04	53.96	47.78



2004 Avg. Length of Stay	Jan	Feb	Mar	Apr	May	Jun	Jul	Aug	Sep	Oct	Nov	Dec	Total
¹ Released	14.04	10.58	21.86	14.71	15.42	18.24	27.41	19.52	22.55	21.81	23.15	20.81	19.18
² In Custody	52.35	57.73	49.20	59.05	62.03	64.15	62.37	67.37	60.14	55.37	43.85	44.29	56.49



Notes: Less than one day of stay is calculated as one day.

¹ Length of stay is calculated according to release date for those who are released.

² For those still in custody, length of stay is calculated at the last day of the month.