

City and County of San Francisco



Juvenile Probation Department

Monthly Report for June 2004

Presented to the Juvenile Probation Commission

July 28th, 2004

Table of Contents

Section I Summary Reports

Juvenile Hall, Log Cabin Ranch Summary Statistics.....	1
Community Programs Summary Statistics	2
Probation Services Summary Statistics.....	4

Section II Current Month General Detail

Probation Referrals, Juvenile Admissions And Average Daily Population	6
Juvenile Hall Admissions and Average Daily Population.....	7
Commitments to out-of-home placement.....	8
Commitments to California Youth Authority.....	9
Log Cabin Ranch Admissions and Average Daily Population.....	10
Probation Referrals	11
Juvenile Hall And Log Cabin Ranch Incident Report	12
Juvenile Hall And Log Cabin Ranch Grievances Report.....	13
Bay Area Resident Juvenile Hall Comparison	14
Juvenile Hall Admissions.....	15
Juvenile Hall Detainees by Detention Reason.....	16
Juvenile Hall Average Daily Population by Rated Capacity.....	17
Juvenile Hall Average Length of Stay.....	18

Section III Demographics

Juvenile Hall Detainees by Sex and Race/Ethnic Origin.....	19
Juvenile Hall Detainees by Age	20
Juvenile Hall Detainees by Age and Sex.....	21
Juvenile Hall Detainees by Geographic Residence of Youth.....	22
Juvenile Hall Detainees by Race/Ethnic Origin and Sex.....	23

Section IV
Historical Information

2001-2003 Probation Referrals24
2002-2003 Juvenile Hall Admissions25
2002-2003 Juvenile Hall Average Daily Population.....26
2002-2003 Juvenile Hall Average Length of Stay by Month.....27



Section I

Summary Reports

Summary Report for the Month of June 2004

Juvenile Hall	<i>May 2003</i>	<i>May 2004</i>	<i>June 2003</i>	<i>June 2004</i>	<i>YTD 2003</i>	<i>YTD 2004</i>
Admissions	192	178	178	145	1039	1029
Average Daily Population	94	101	92	101	90	100
Average Length of Stay (Releases)	16.86	15.42	11.07	18.24	16	15.81
Average Length of Stay (In Custody)	43.80	62.03	51.98	64.15	48	57.42
Releases	199	176	177	142	1039	1007
Log Cabin Ranch						
Admissions:						
First Time Commitments	2	2	0	3	10	13
Recommitments	0	0	0	0	1	0
<i>Total</i>	2	2	0	3	11	13
Releases:						
Graduated	2	1	2	3	15	15
Escape	0	0	0	0	0	0
Other releases	1	0	1	1	8	2
<i>Total</i>	3	1	3	4	23	17
Average Daily Population	25	15	22	13	25	17
Grievances Filed						
Juvenile Hall:						
B1	0	0	1	0	4	3
B2	0	0	0	0	1	8
B3	0	0	0	0	0	1
B4	3	0	0	0	14	1
B5	0	0	0	3	5	5
G2 (CO-ED)	1	0	0	0	3	2
<i>Total</i>	4	0	0	3	27	20
Log Cabin Ranch	0	0	0	0	0	0
Incident Reports						
Juvenile Hall	14	16	16	11	80	80
Log Cabin Ranch	3	1	2	3	8	5
<i>Total</i>	17	17	18	14	88	85

Summary Report for the Month of June 2004

Community Programs	<i>Program Vacancies by Agency on June 2004</i>	<i>Active in program May 2003</i>	<i>Active in Program May 2004</i>	<i>Active in Program June 2003</i>	<i>Active in Program June 2004</i>
IHBS Monthly Client Count					
BayView Hunters Point Foundation	13	16	13	16	13
Chinatown Youth Center	0	10	13	10	13
Morrisania West, Inc.	0	11	12	11	12
Office of Samoan Affairs	2	9	9	9	9
Potrero Hill Neighborhood House	4	11	7	11	7
Instituto Familiar de La Raza	10	22	22	22	22
Vietnamese Youth Development Center	4	5	7	5	7
Brothers Against Guns	3	0	11	0	11
<i>Total</i>	36	84	94	84	94
<i>June 2004 Percent Program Utilization</i>	73%				
<i>June 2004 Percent Change from last report</i>	0%				

Summary Report for TANF and Girls Programs
Month: May 2004

PROGRAM	ANNUAL GOAL	NUMBER SERVED
California Community Dispute Services: Youth Accountability Boards	40	54
CARECEN: Tattoo Removal and Case Management	45	55
Center for Young Women's Development: Girls Services	40	140
Community Works – Girls Diversion Program	24	14
Community Works – Girls Therapeutic Arts Curriculum in Juvenile Hall	100	92
Community Works – ROOTS Support for Children of Incarcerated Parents	40	38
Edgewood Kinship Support Network	30	26
Family Restoration House: Life Skills	30	32
Girls 2000: Girls Services and Family Support Services	20	22
Instituto Familiar de la Raza – Case Management	10	9
Mission Neighborhood Center: Young Queens on the Rise – Girls Services	35	37
Performing Arts Workshop: Arts Education at Impact High School	30	36
SAGE: Girls Services	35	52
Samoan Community Development Center: Anger Management	75	165
Special Services for Groups – Occupational Therapy Training Program	50	72
United Way/Girls Justice Initiative: Detention-based Case Management & Inside Mentoring Program	300 72	228 100
Urban Services YMCA: Bayview Beacon Truancy Support	50	16
YGCIC GED & Focus Vocational Programs	105	43
YWCA – CITS and FITS Girls Mentorship	64	65

Summary Report for the Month of June 2004

Probation Services	<i>May 2004</i>	<i>June 2004</i>	<i>Year To Date 2004</i>
Probation Referrals	245	216	1581
Petitions	73	98	589
Selected Court Dispositions:			
California Youth Authority	0	3	6
Log Cabin Ranch	3	3	11
Out of Home Placement	15	11	92
Other Probation	27	28	172
Violation of Probation Petitions Filed	20	21	94
California Youth Authority Monthly Count			
Institutions:			
Males	43	42	
Females	5	5	
Total	48	47	
Parole:			
Males	23	23	
Females	1	1	
Total	24	24	

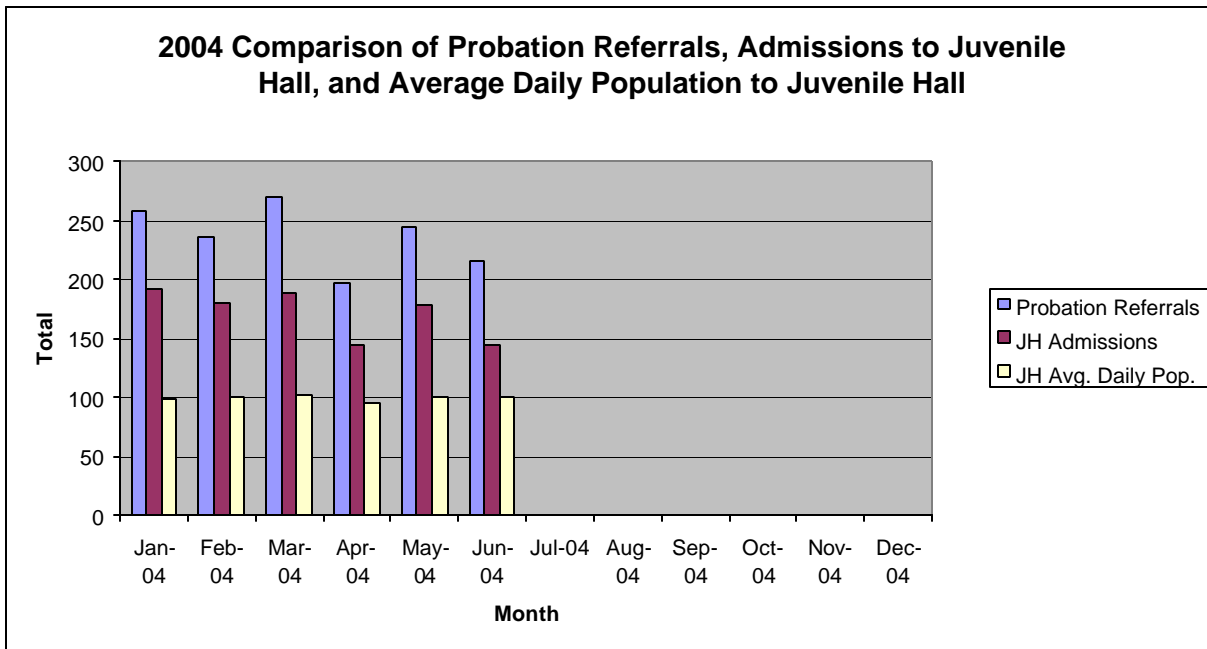
Summary Report for the Month of June 2004

Probation Services			
Caseload List	May 2004	June 2004	June Average # Youth by PO
South Intake	229	226	45.20
North Intake	218	232	38.67
Prevention Diversion	179	173	19.22
Serious Offenders	107	102	17.00
Supervision	174	169	21.13
County Placement	19	20	20.00
Private Placement	184	193	17.55
Drug Court	24	23	23.00
Family Integrated Treatment Services	128	119	14.88
<i>Total</i>	1262	1257	24.48
Special Services Unit	New	Closed	Active at end of Month
Record Sealings	7	6	140
Stepparent Adoptions	2	0	54
Terminations	0	1	11
Marriage Consents	1	0	0
Custody Evaluations	0	0	0
	Entered	Completed	Active at end of Month
Community Service	10	3	1182
		Referred	Completed at end of Month
COPS		6	5
Street Law (Still in session)		10	0
Theft Awareness		39	26
Anger Management for boys		15	8
Anger Management for girls		10	6
Life Management Skills		2	2
Kids Turn Non-Violent Family Skills (Still in session)		12	0
Information, Record Checks, Research & Photo Copying Juvenile Records For:	May 2004	June 2004	Year to Date 2004
Job Corps, Probation Departments,			
Military, Law Enforcement,			
Misc., (letters, Memos, Forms, etc.)	99	128	770

Section II
Current Month
General Detail

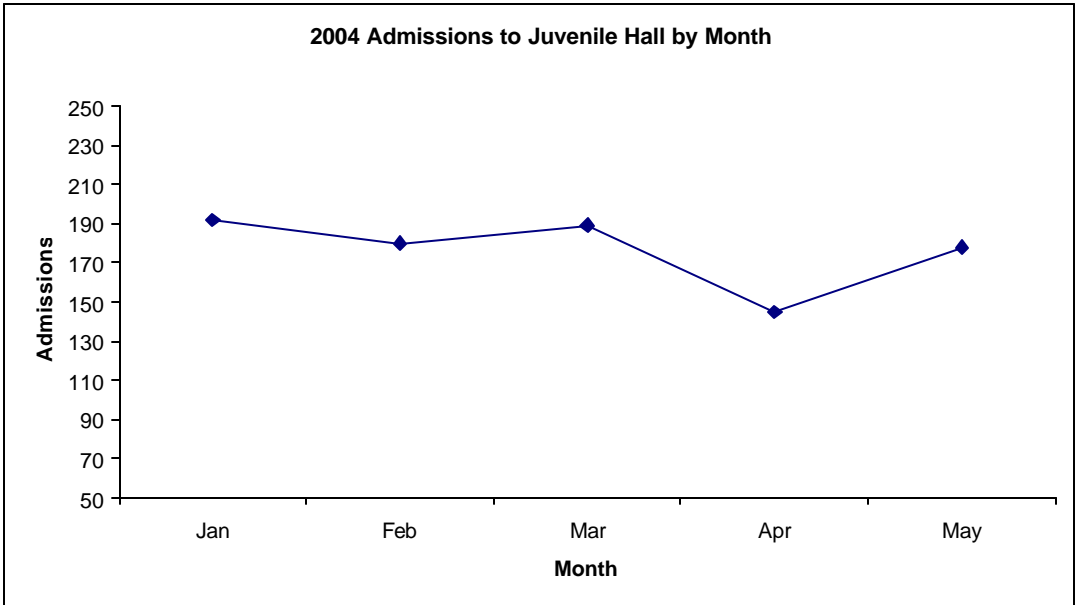
San Francisco Juvenile Probation

	Jan-04	Feb-04	Mar-04	Apr-04	May-04	Jun-04	Jul-04	Aug-04	Sep-04	Oct-04	Nov-04	Dec-04
Probation Referrals	259	236	270	197	245	216						
JH Admissions	192	180	189	145	178	145						
JH Avg. Daily Pop.	98	101	103	96	101	101						

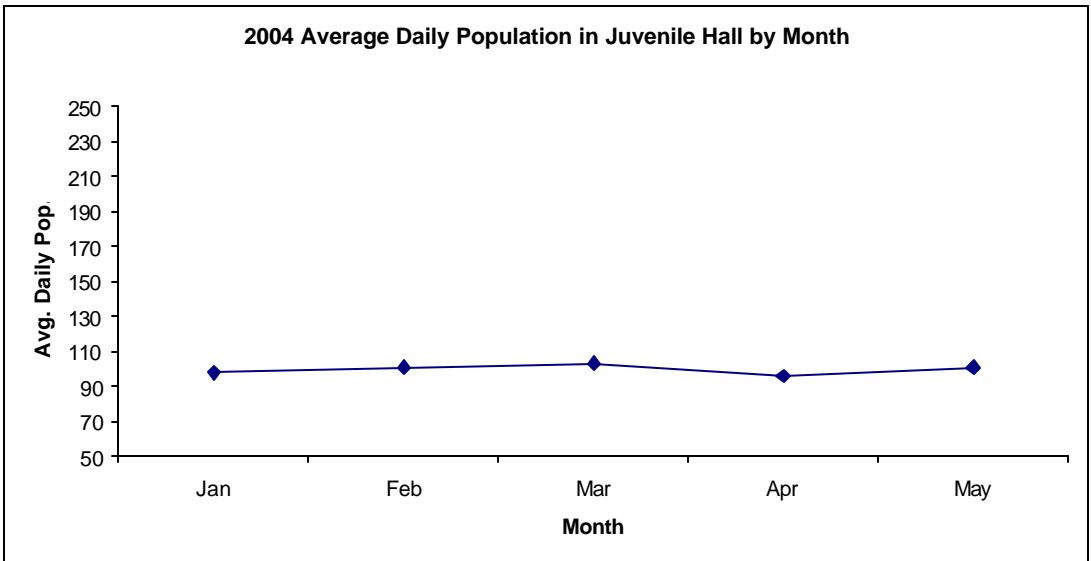


**San Francisco Juvenile Probation
Admissions and Average Daily Population
In Juvenile Hall
(Calendar Year 2004)**

Admissions	Jan	Feb	Mar	Apr	May	Jun	Jul	Aug	Sep	Oct	Nov	Dec	Total
2004	192	180	189	145	178	145							1029



Avg. Daily Pop.	Jan	Feb	Mar	Apr	May	Jun	Jul	Aug	Sep	Oct	Nov	Dec	Total
2004	98	101	103	96	101	101							100

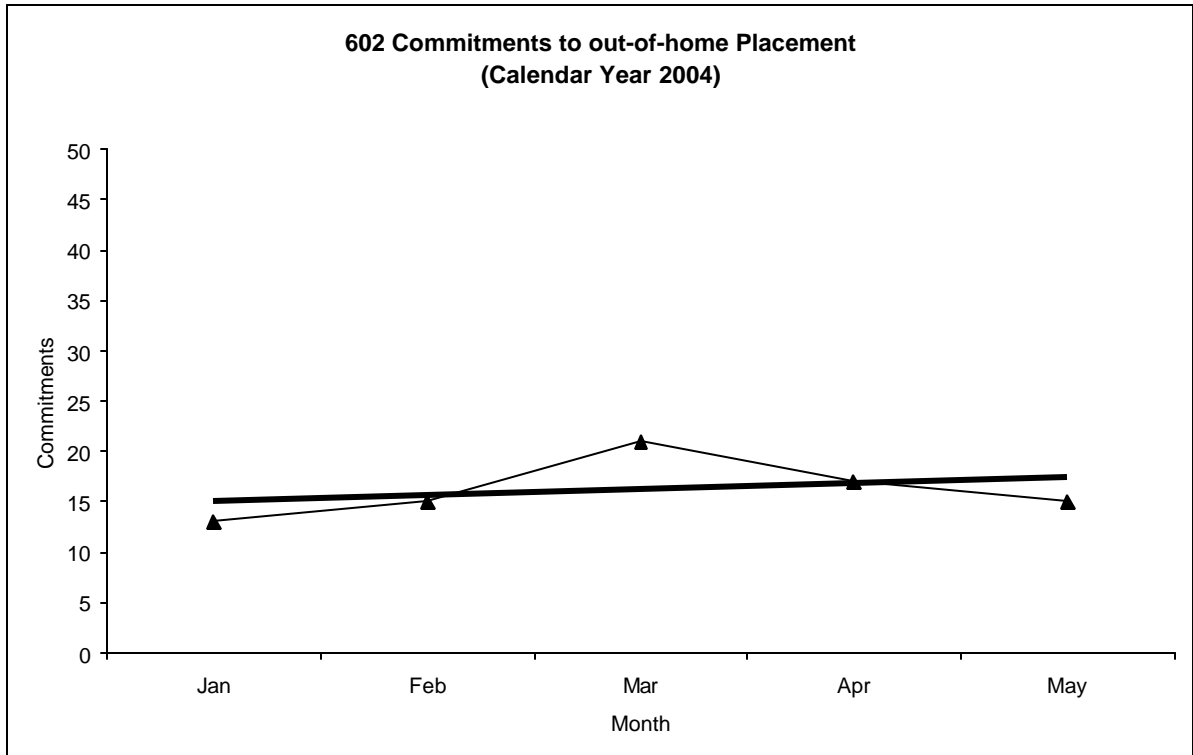


Out-of-Home Placement¹

Commitments of 602's

Calendar Year 2004

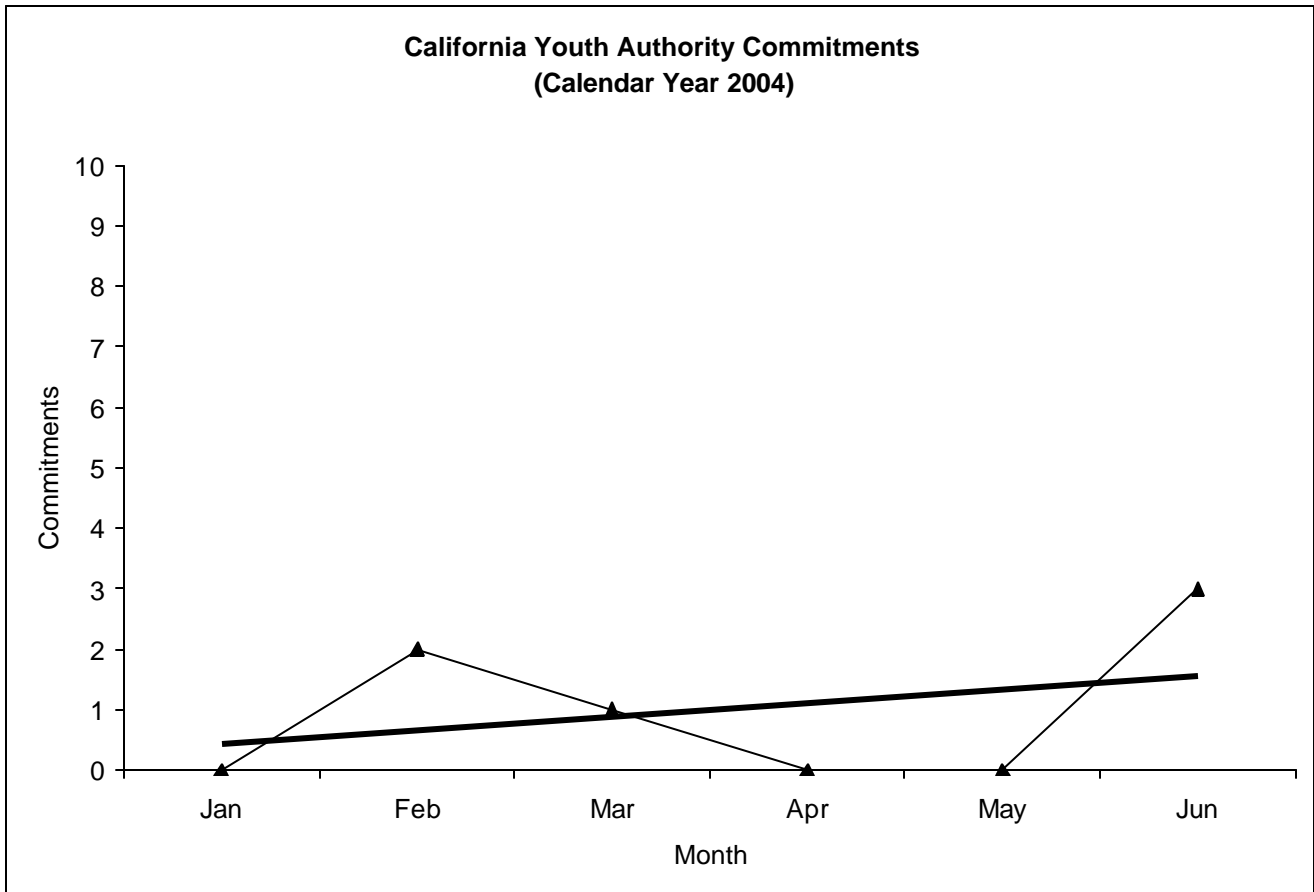
Commitments	Jan	Feb	Mar	Apr	May	Jun	Jul	Aug	Sep	Oct	Nov	Dec	Total
2004	13	15	21	17	15	11							92



¹ This report is based on 602 Commitments to out-of-home placements. If there is a 601 commitment, it will show as a footnote here. Figures are regularly updated to include reports from previous reporting periods.

California Youth Authority Commitments (Calendar Year 2004)

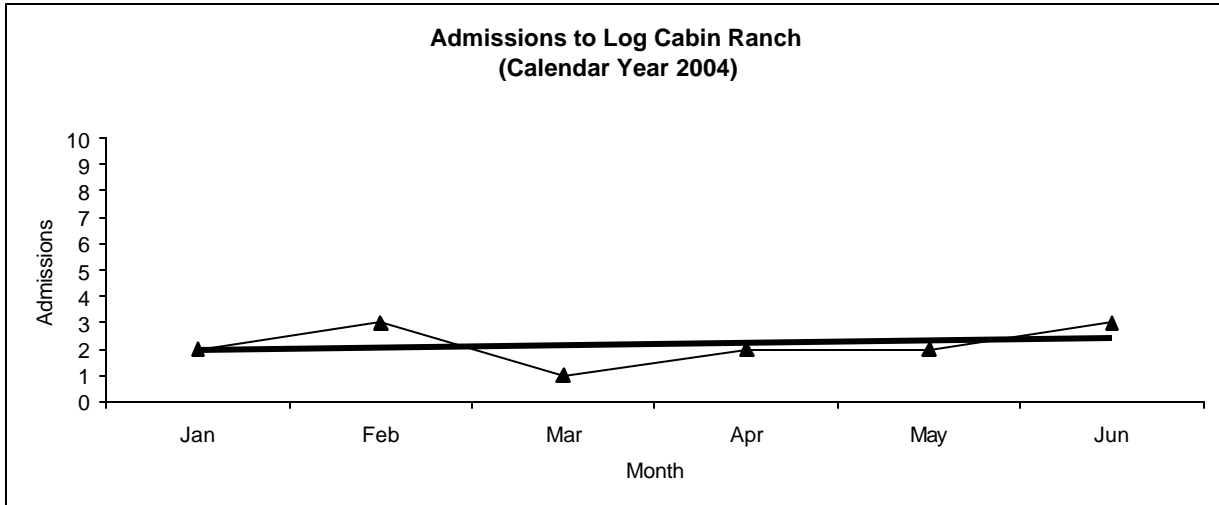
Commitments	Jan	Feb	Mar	Apr	May	Jun	Jul	Aug	Sep	Oct	Nov	Dec	Total
2004	0	2	1	0	0	3							6



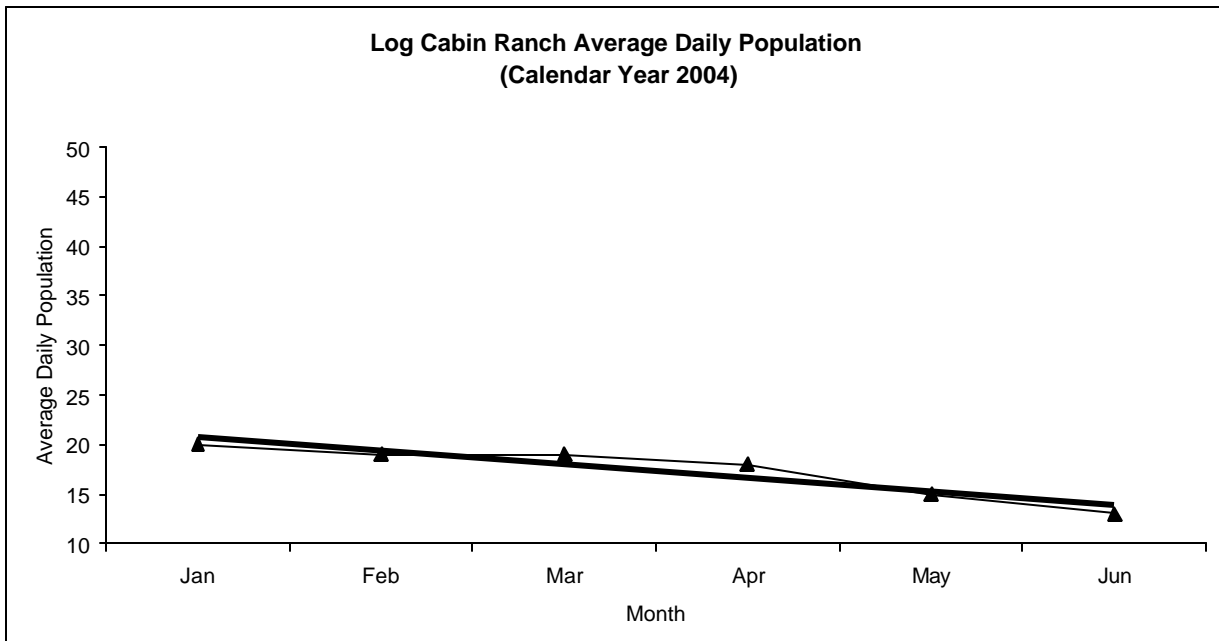
Log Cabin Ranch

Admissions and Average Daily Population (Calendar Year 2004)

Admissions	Jan	Feb	Mar	Apr	May	Jun	Jul	Aug	Sep	Oct	Nov	Dec	Total
2004	2	3	1	2	2	3							13



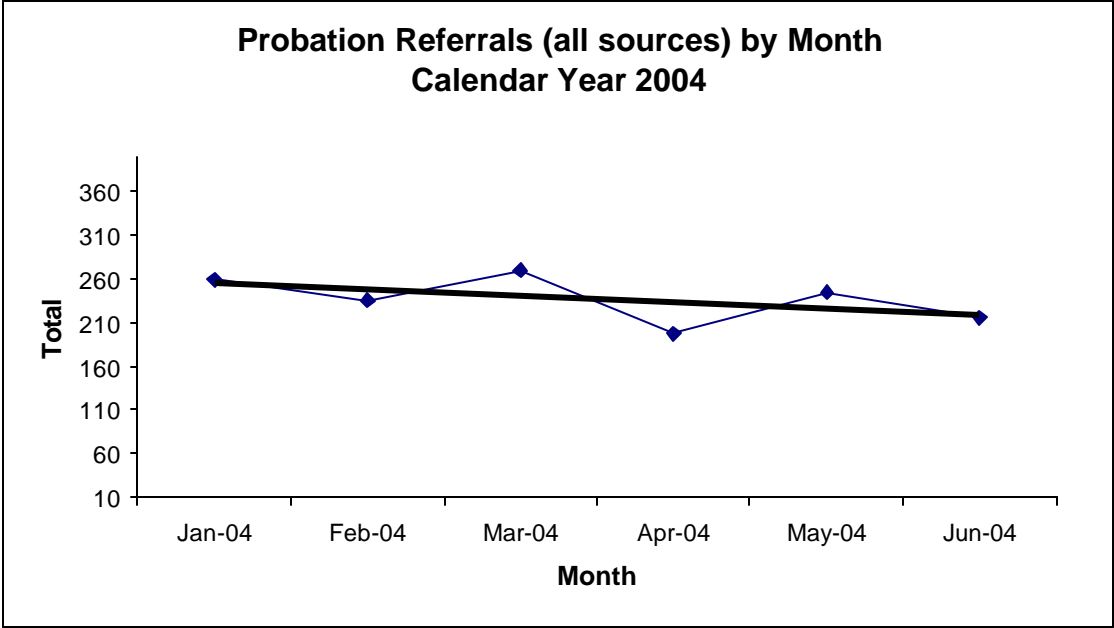
Avg. Daily Pop.	Jan	Feb	Mar	Apr	May	Jun	Jul	Aug	Sep	Oct	Nov	Dec	Total
2004	20	19	19	18	15	13							17.33



Probation Referrals by Month Calendar Year 2004

Probation Referrals (all sources) by Month (602 W&I)

Jan-04	259
Feb-04	236
Mar-04	270
Apr-04	197
May-04	245
Jun-04	216
Jul-04	
Aug-04	
Sep-04	
Oct-04	
Nov-04	
Dec-04	



SAN FRANCISCO JUVENILE PROBATION DEPARTMENT
 MONTHLY INCIDENT REPORT FORM
 MONTH/YEAR: JUNE 2004

Log Cabin Ranch	Battery on Staff	Injury to Staff due to Restraint of Minor	Fight	Battery Youth on Youth	Attempted Escape	AWOL	Attempted Suicide	Serious Contraband (Weapon Illegal Drug)
	0	1	2	0	0	0	0	0
	Battery on Staff with Injury	Fire	Fight with Injury	Battery Youth on Youth with Injury	Escape	Death	Suicide	Major Property Destruction
	0	0	0	0	0	0	0	0
Juvenile Hall	Battery on Staff	Injury to Staff due to Restraint of Minor	Fight	Battery Youth on Youth	Attempted Escape	AWOL	Attempted Suicide	Serious Contraband (Weapon Illegal Drug)
	1	0	8	1	0	0	1	0
	Battery on Staff with Injury	Fire	Fight with Injury	Battery Youth on Youth with Injury	Escape	Death	Suicide	Major Property Destruction
	0	0	0	0	0	0	0	0

Grievances Filed June 2004

San Francisco Juvenile Probation Department

Juvenile Hall

*During the month of June, there was three (3) grievance submitted under **Juvenile Title 15 & 24 Minimum Standards for Juvenile Facilities Guidelines 2001 Revisions**. All documents have been logged as grievances. In addition, all the grievances have been referred to the appropriate departments and staff. The grievances would have been resolved via exchange of ideas between supervisory staff, residents, and the office of the Ombudsman.*

Grievance Documents:

Grievance 19, 20 and 21 filed in B5 indicating, several youths' wanted access to Islamic teaching. At the time of this grievance there was no Iman or teacher available. After meeting with Reverend Dunbar she was able to locate an Iman. Who has began Islamic studies this month in YGC. He's now going through the clearance process for his YGC badge.



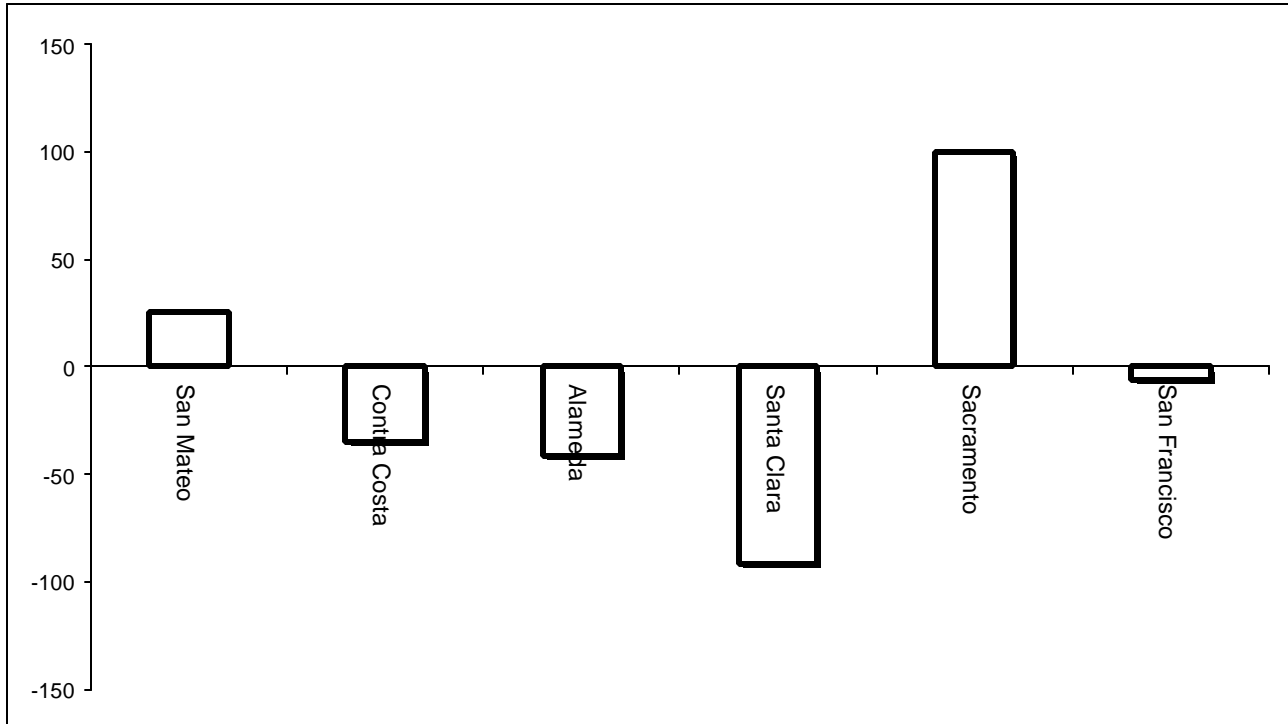
**Grievances Filed June 2004
San Francisco Probation Department
From the office of the Ombudsman.**

<i>Area of Infraction</i>	<i>Title 15 Article/Section</i>	<i>B1</i>	<i>Coed</i>	<i>B2</i>	<i>B3</i>	<i>B4</i>	<i>B5</i>	<i>TOTAL</i>
Religious Program	6.1372	<i>0</i>		<i>0</i>	<i>0</i>	<i>0</i>	<i>3</i>	3
Total		<i>0</i>	<i>closed</i>	<i>0</i>	<i>0</i>	<i>0</i>	<i>3</i>	3

Log Cabin Ranch

Type	Log Cabin Ranch
Food/Snacks	0
Laundry	0
Personal Property	0
Phone Calls	0
Procedures	0
Head Call	0
Discipline	0
Complaints vs. Staff	0
Cottage Change	0
Medical	0
School	0
Probation	0
Miscellaneous	0
Total	0

Bay Area Resident Juvenile Hall Comparison Over/Under Capacity on July 7th, 2004

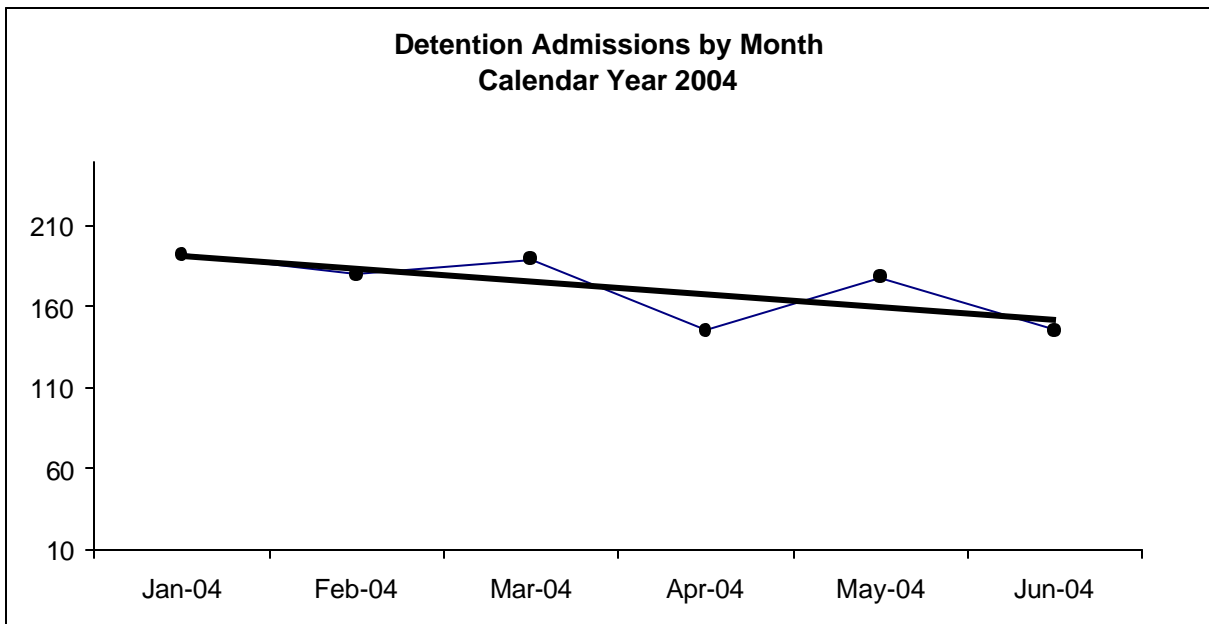


	Rated Capacity	Actual	Over/Under Capacity
San Mateo	130	155	25
Contra Costa	160	125	-35
Alameda	288	246	-42
Santa Clara	329	237	-92
Sacramento	256	356	100
San Francisco	104	98	-6

Juvenile Hall Admissions by Month Calendar Year 2004

Detention Admissions by Month

Jan-04	192
Feb-04	180
Mar-04	189
Apr-04	145
May-04	178
Jun-04	145
Jul-04	
Aug-04	
Sep-04	
Oct-04	
Nov-04	
Dec-04	

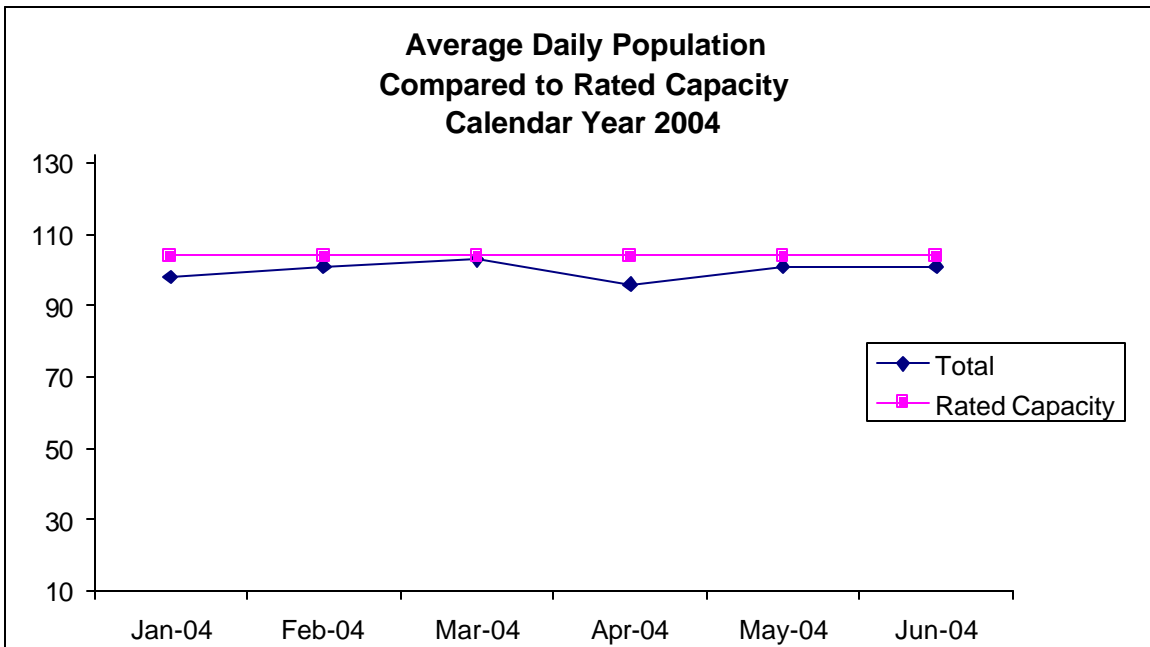


**Characteristics of Juvenile Hall Detainees on June 30th, 2004
Using CJIS Code From the Department of Justice**

Detention Reason	Offense Code	MFI	Count	%
MURDER	187 (A) PC	F	4	3.77%
ATTEMPTED MURDER	664 /187 (A) PC	F	8	7.55%
ORAL COPULATION IN CONCERT W/FORCE/ETC	288 A (D)(1) PC	F	4	3.77%
ATTEMPTED RAPE BY FORCE/FEAR/ETC	261 (A)(2) PC	F	1	0.94%
LEWD OR LASCIVIOUS ACTS W/CHILD UNDER 14 YEARS	288 (A) PC	F	2	1.89%
SEXUAL PENETRATION WITH FORCE/ETC	289 (A)(1) PC	F	1	0.94%
CARJACKING	215 (A) PC	F	2	1.89%
ASSAULT W/DEADLY WEAPON ON TRANSPORTATION PERSONNEL/ETC	245.2 PC	F	1	0.94%
TRANSPORT/SELL NARCOTIC/CONTROLLED SUBSTANCE	11352 (A) HS	F	3	2.83%
POSSESS/PURCHASE COCAINE BASE FOR SALE	11351.5 HS	F	1	0.94%
BURGLARY:FIRST DEGREE	459 PC	F	1	0.94%
ROBBERY:SECOND DEGREE	212.5(C) PC	F	10	9.43%
ATTEMPTED ROBBERY:SECOND DEGREE	212.5(C) PC	F	4	3.77%
POSSESS/PURCHASE FOR SALE NARCOTIC/CONTROLLED SUBSTANCE	11351 HS	F	1	0.94%
INFLECT CORPORAL INJURY ON SPOUSE/COHABITANT	273.5 PC	F	1	0.94%
ASSAULT:DEADLY WEAPON OR FORCE:POSSIBLE GREAT BODILY INJ	245 (A) PC	F	3	2.83%
FORCE OR ADW NOT FIREARM:GBI LIKELY	245 (A)(1) PC	F	4	3.77%
POSSESS STOLEN VEHICLE/VESSEL/ETC	496 D (A) PC	F	1	0.94%
POSSESS NARCOTIC CONTROLLED SUBSTANCE	11350 (A) HS	F	1	0.94%
POSSESS MARIJUANA FOR SALE	11359 HS	F	2	1.89%
POSSESS FIREARM W/ALTERED IDENTIFICATION	12091 PC	F	1	0.94%
OBSTRUCT/RESIST EXECUTIVE OFFICER	69 PC	F	1	0.94%
GRAND THEFT FROM PERSON	487 (C) PC	F	2	1.89%
TAKE VEHICLE W/O OWNER'S CONSENT/VEHICLE THEFT	10851 (A) VC	F	4	3.77%
POSSESS ANY ASSAULT WEAPON	12280 (B) PC	F	1	0.94%
POSSESS WEAPON/ETC AT SCHOOL	626.10 PC	F	1	0.94%
OBSTRUCT/RESIST/ETC PUBLIC/PEACE OFFICER/EMERGENCY MED TECH	148 (A)(1) PC	M	2	1.89%
THREATEN CRIME WITH INTENT TO TERRORIZE	422 PC	M	1	0.94%
BATTERY	242 PC	M	4	3.77%
INDECENT EXPOSURE	314.1 PC	M	1	0.94%
FALSE IDENTIFICATION TO SPECIFIC PEACE OFFICERS	148.9(A) PC	M	1	0.94%
FAIL TO OBEY ORDER OF JUVENILE COURT 602 WI	777 (A)(2) WI	M	6	5.66%
VIOLATION(S) OF HOME SUPERVISION CONDITION	628.1 WI	M	6	5.66%
CHANGE OF PLACEMENT/PLACEMENT FAILURE	737 WI	M	4	3.77%
COURT ORDER	CTORD 602	X	8	7.55%
BENCH WARRANT	BENCH WARRANT	X	2	1.89%
WARRANT	WRNT602	X	6	5.66%
		Total	106	100.00%

**Average Daily Population
By Rated Capacity
Calendar Year 2004**

	Total	Rated Capacity
Jan-04	98	104
Feb-04	101	104
Mar-04	103	104
Apr-04	96	104
May-04	101	104
Jun-04	101	104
Jul-04		104
Aug-04		104
Sep-04		104
Oct-04		104
Nov-04		104
Dec-04		104



Juvenile Hall Average Length of Stay

For the Month of June 2004

¹Released

Range of Days	<i>1-10 days</i>	<i>11-20 days</i>	<i>21-30 days</i>	<i>30 or more days</i>	Total
# of Youth Released	88	22	10	22	142
% of Population	71.30%	8.70%	3.80%	16.30%	100%
# of Days	307	331	264	1688	2590
% of Total Days	11.85%	12.78%	10.19%	65.17%	100%
Average Length of Stay	3.49	15.05	26.40	76.73	18.24

²In Custody

Range of Days	<i>1-10 days</i>	<i>11-20 days</i>	<i>21-30 days</i>	<i>30 or more days</i>	Total
# of Youth Detained	35	15	11	45	106
% of Population	38.60%	18.10%	12.60%	30.70%	100%
# of Days	193	226	277	6104	6800
% of Total Days	2.84%	3.32%	4.07%	89.76%	100%
Average Length of Stay	5.51	15.07	25.18	135.64	64.15

Notes: Less than one day of stay is calculated as one day.

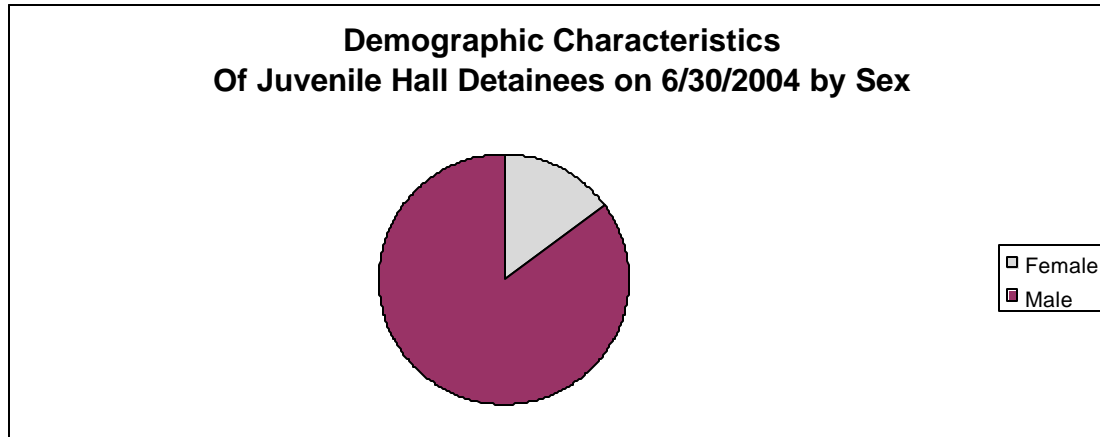
¹Length of stay is calculated according to release date for those who are released.

²For those still in custody, length of stay is calculated at the last day of the month.

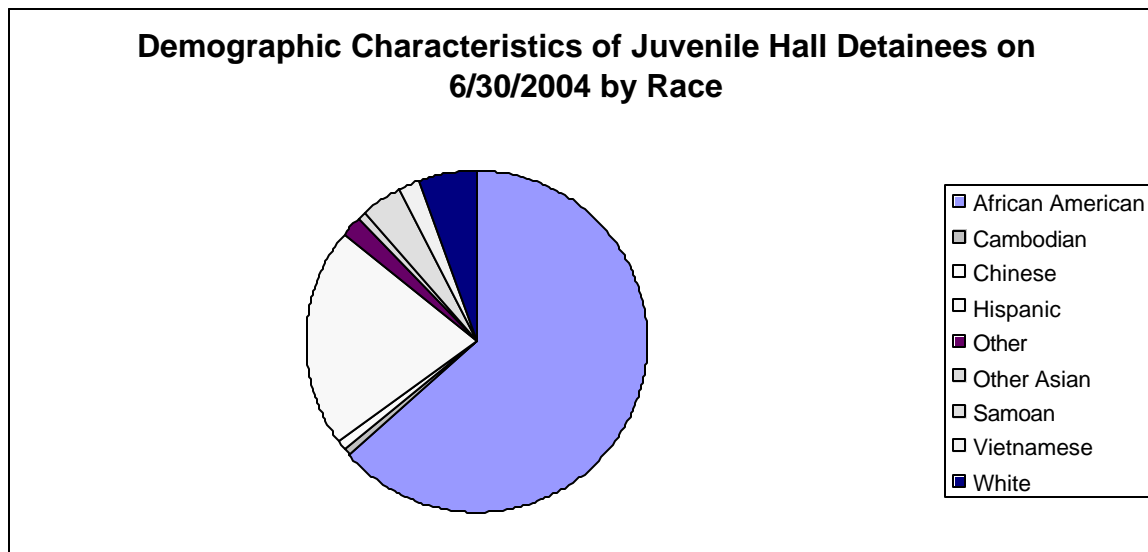
Section III

Demographics

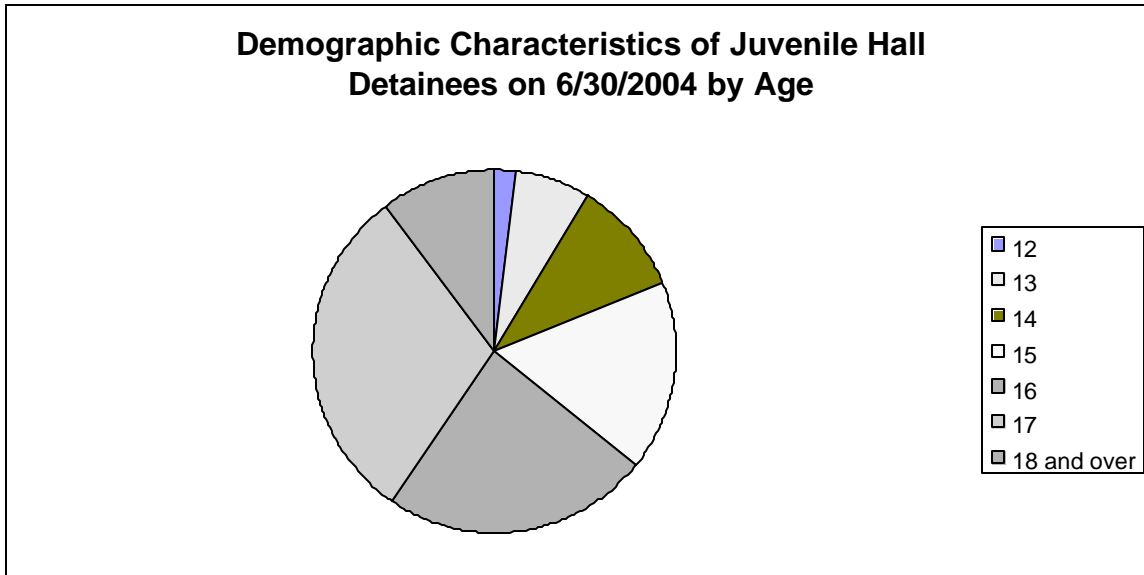
Sex	Frequency	Percent
Female	16	15.09%
Male	90	84.91%
Total	106	100.00%



Race/Ethnic Origin	Frequency	Percent
African American	67	63.21%
Cambodian	1	0.94%
Chinese	1	0.94%
Hispanic	22	20.75%
Other	2	1.89%
Other Asian	1	0.94%
Samoan	4	3.77%
Vietnamese	2	1.89%
White	6	5.66%
Total	106	100.00%

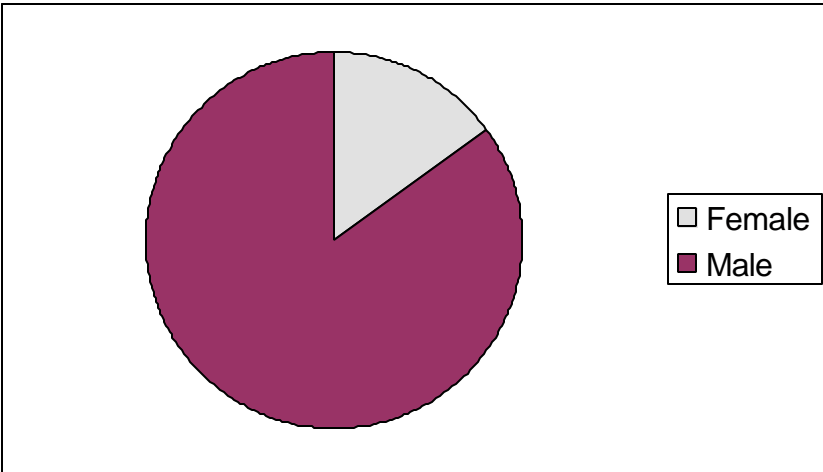


Age	Frequency	Percent
12	2	1.89%
13	7	6.60%
14	11	10.38%
15	18	16.98%
16	25	23.58%
17	32	30.19%
18 and over	11	10.38%
Total	106	100.00%



Demographic Characteristics of Juvenile Hall Detainees
on 6/30/2004
Age by Sex

Age	Female	Male	Total	
12	0	2	2	1.89%
13	0	7	7	6.60%
14	5	6	11	10.38%
15	2	16	18	16.98%
16	1	24	25	23.58%
17	7	25	32	30.19%
18 and over	1	10	11	10.38%
Total	16	90	106	100.00%
	15.09%	84.91%	100.00%	



Demographic Characteristics
Of Juvenile Hall Detainees on June 30th, 2004

Geographic Residence of Youth	Frequency	Percent
Richmond	2	1.9
North of Market/Downtown	1	.9
Treasure Island/Yerba Buena	1	.9
Western Addition	9	8.5
South of Market/Tenderloin	2	1.9
Sunset	1	.9
Inner Mission	14	13.2
Potrero	2	1.9
Parkside	2	1.9
Ingleside (West of Twin Peaks)	7	6.6
Outer Mission	15	14.2
Bayview	28	26.4
Non-San Francisco and Unavailable*	22	20.8
	-----	-----
Total	106	100.0

*Non-San Francisco and Unavailable	Frequency	Percent
BOONVILLE	1	4.5
DALY CITY	1	4.5
DAVIS	1	4.5
FRESNO	2	9.1
LAKEPORT	1	4.5
OAKLAND	6	27.3
ORANGEVALE	1	4.5
PASO ROBLES	1	4.5
RANCHO CORDOBA	1	4.5
SACRAMENTO	1	4.5
SAN JOSE	1	4.5
SAN LEANDRO	1	4.5
SAN MATEO	1	4.5
UNAVAILABLE	3	13.6
	-----	-----
Total	22	100.0

Demographic Characteristics
Of Juvenile Hall Detainees on June 30th, 2004

Race/Ethnic Origin by Sex

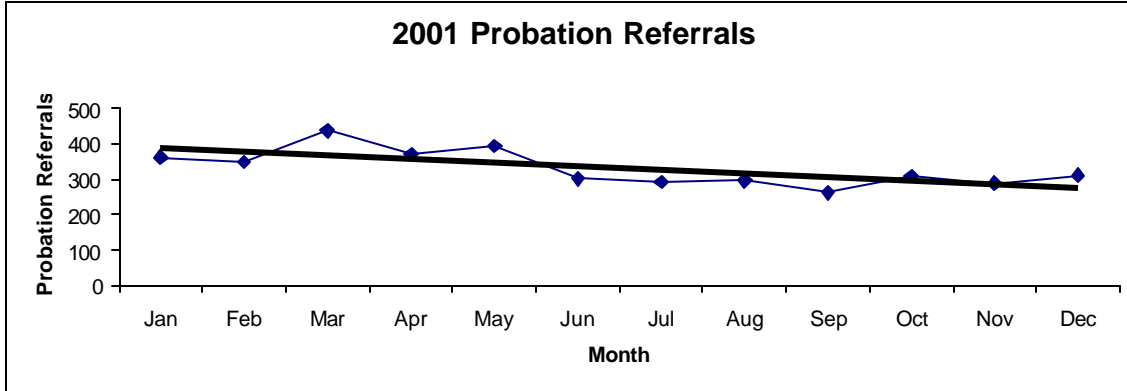
RACE	Count	SEX		Row Total
		Female	Male	
		F	M	
OTHER ASIAN			1	1 .9
AFRICAN AMERICAN	8	59		67 63.2
CHINESE			1	1 .9
CAMBODIAN			1	1 .9
HISPANIC	5	17		22 20.8
OTHER			2	2 1.9
SAMOAN	1	3		4 3.8
VIETNAMESE	1	1		2 1.9
WHITE	1	5		6 5.7
Column Total	16 15.1	90 84.9		106 100.0

Section IV

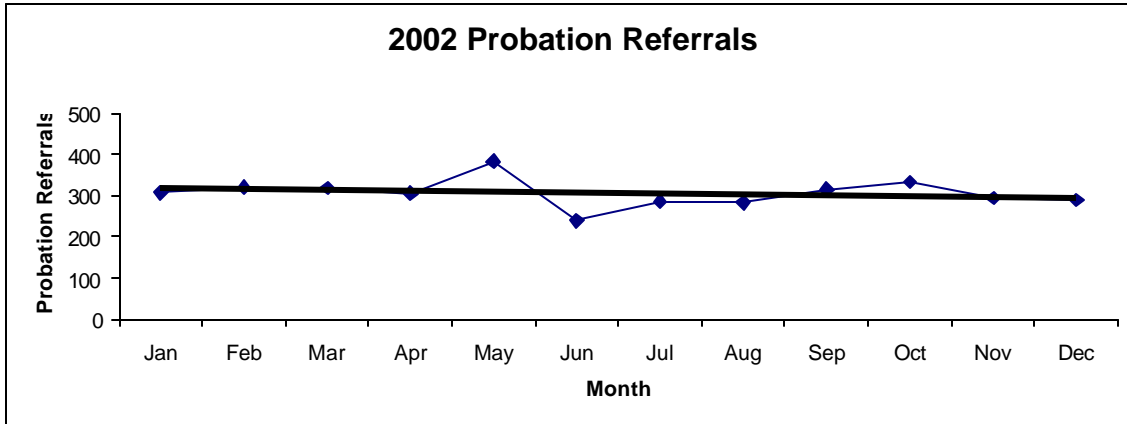
Historical Information

San Francisco Juvenile Probation
Probation Referrals (all sources) By Month
 (2001-2003)

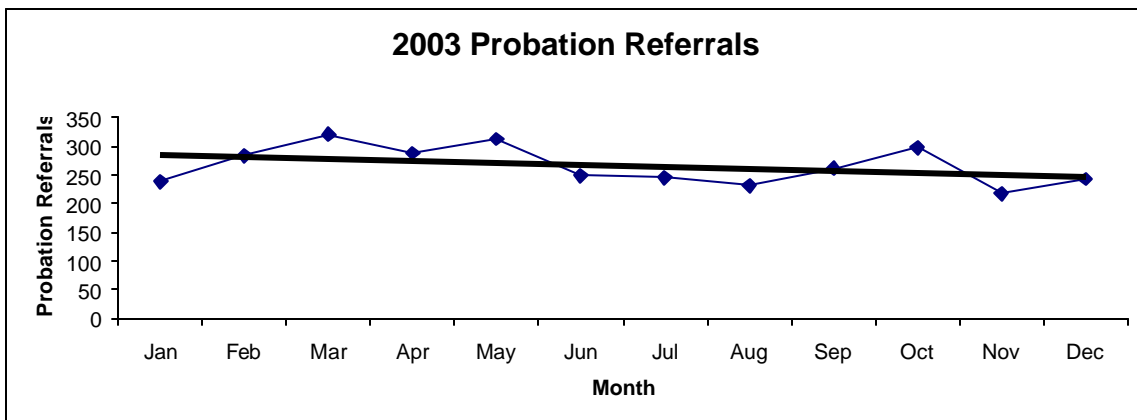
2001 Probation Referrals	Jan	Feb	Mar	Apr	May	Jun	Jul	Aug	Sep	Oct	Nov	Dec	Total
	361	348	437	370	394	301	292	296	262	309	287	311	3968



2002 Probation Referrals	Jan	Feb	Mar	Apr	May	Jun	Jul	Aug	Sep	Oct	Nov	Dec	Total
	308	320	318	305	384	240	286	283	315	333	294	289	3675

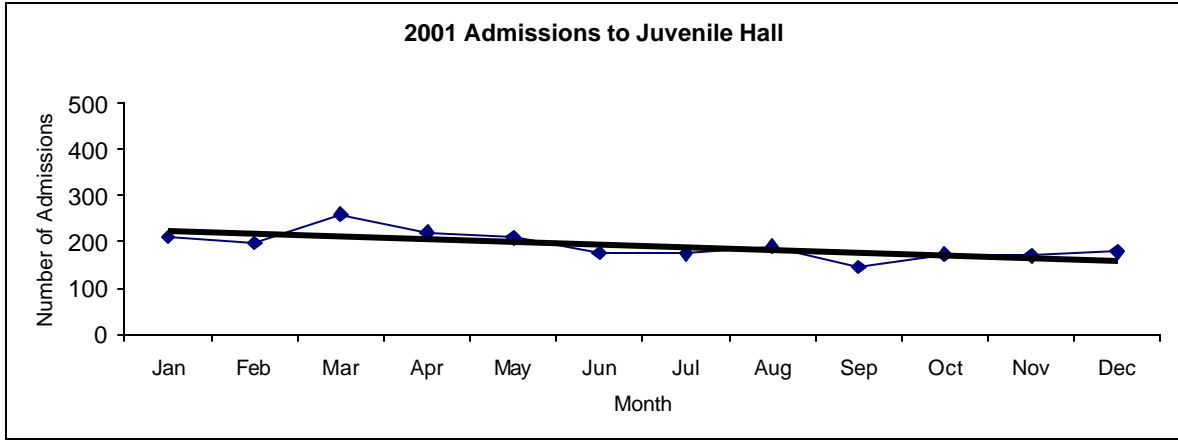


2003 Probation Referrals	Jan	Feb	Mar	Apr	May	Jun	Jul	Aug	Sep	Oct	Nov	Dec	Total
	238	283	320	288	313	248	245	231	261	297	218	243	3185

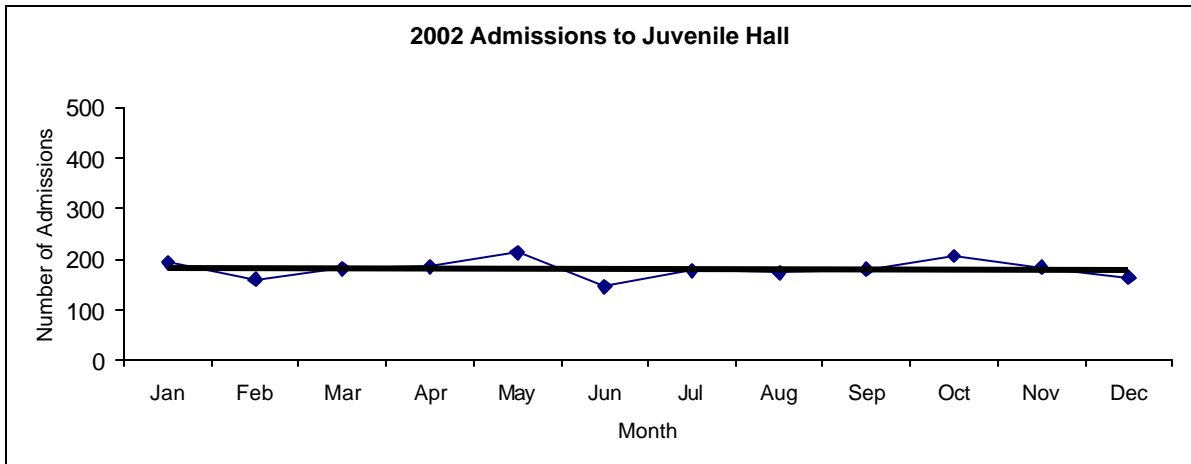


San Francisco Juvenile Probation
Juvenile Hall Admissions By Month
 (Calendar Years 2001-2003)

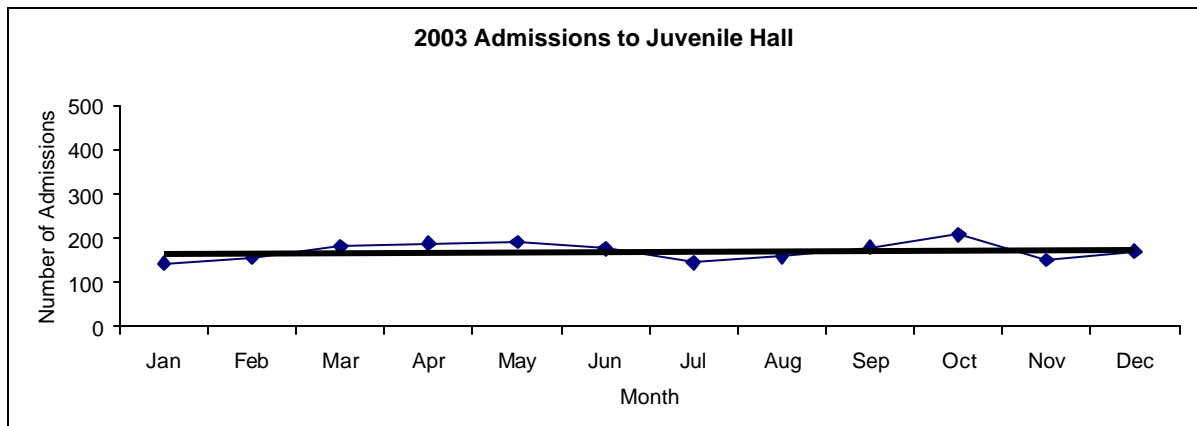
2001 Admissions	Jan	Feb	Mar	Apr	May	Jun	Jul	Aug	Sep	Oct	Nov	Dec	Total
	210	197	260	220	209	176	174	190	145	173	170	178	2302



2002 Admissions	Jan	Feb	Mar	Apr	May	Jun	Jul	Aug	Sep	Oct	Nov	Dec	Total
	193	160	181	185	213	145	177	173	179	206	183	164	2159

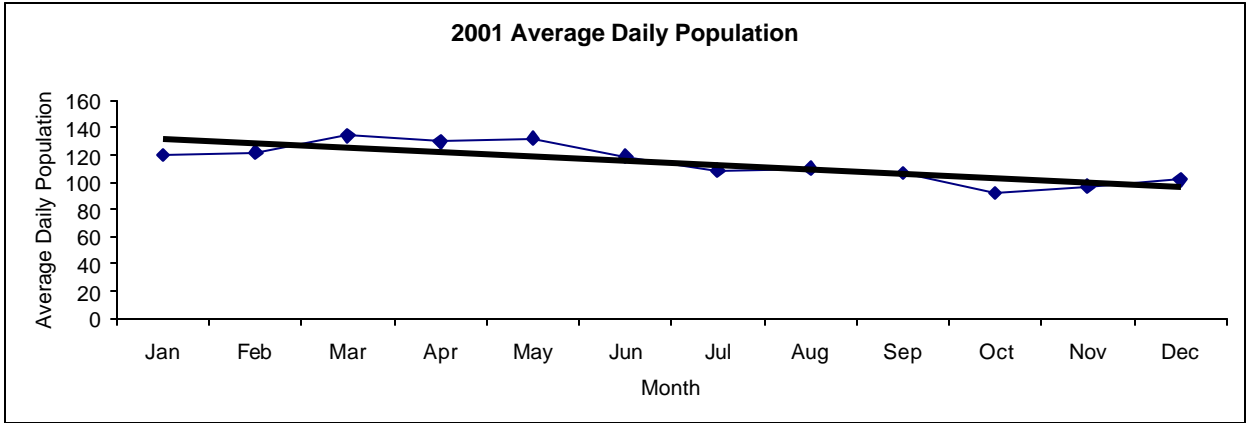


2003 Admissions	Jan	Feb	Mar	Apr	May	Jun	Jul	Aug	Sep	Oct	Nov	Dec	Total
	144	156	181	189	191	176	145	158	179	208	151	170	2048

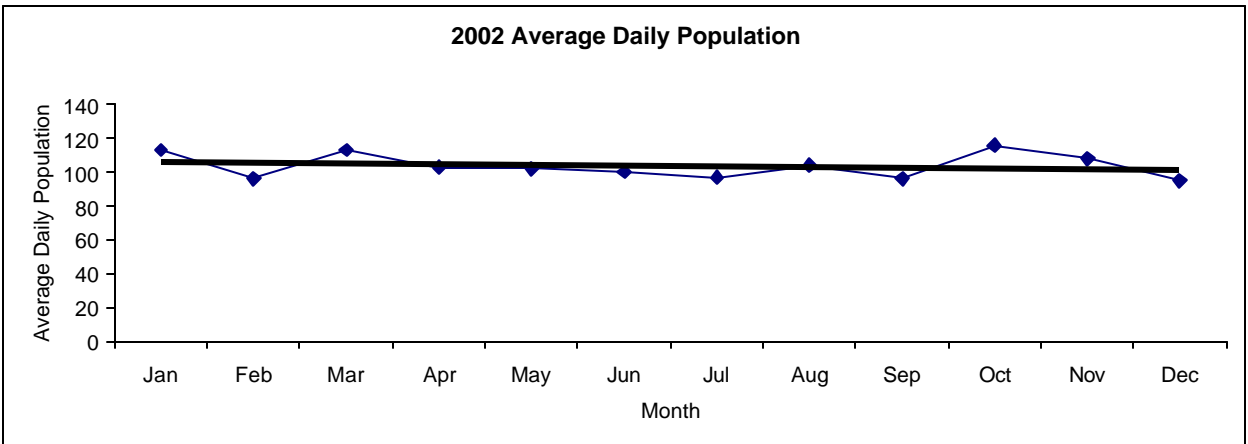


San Francisco Juvenile Probation
Juvenile Hall Average Daily Population By Month
 (Calendar Years 2001-2003)

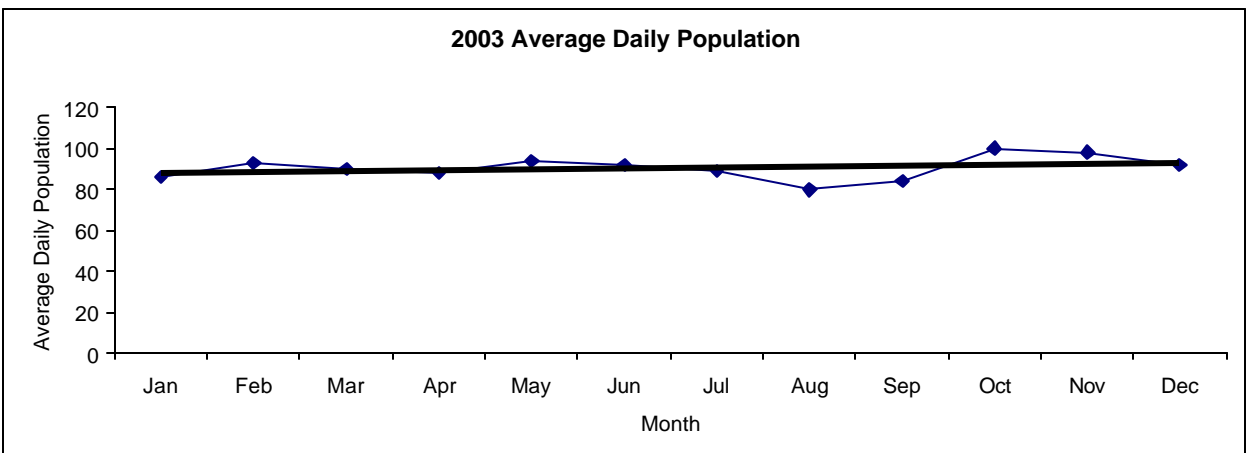
2001 Avg. Daily Pop.	Jan	Feb	Mar	Apr	May	Jun	Jul	Aug	Sep	Oct	Nov	Dec	Total
	120	122	134	130	132	119	109	110	107	92	97	102	115



2002 Avg. Daily Pop.	Jan	Feb	Mar	Apr	May	Jun	Jul	Aug	Sep	Oct	Nov	Dec	Total
	113	96	113	103	102	100	97	104	96	116	108	95	104

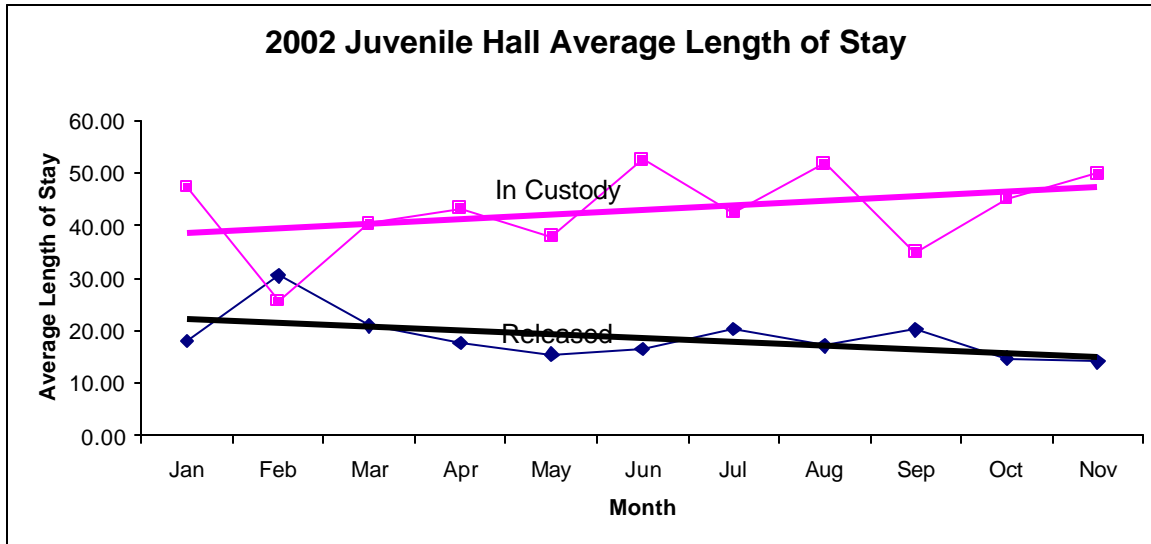


2003 Avg. Daily Pop.	Jan	Feb	Mar	Apr	May	Jun	Jul	Aug	Sep	Oct	Nov	Dec	Total
	86	93	90	88	94	92	89	80	84	100	98	92	91

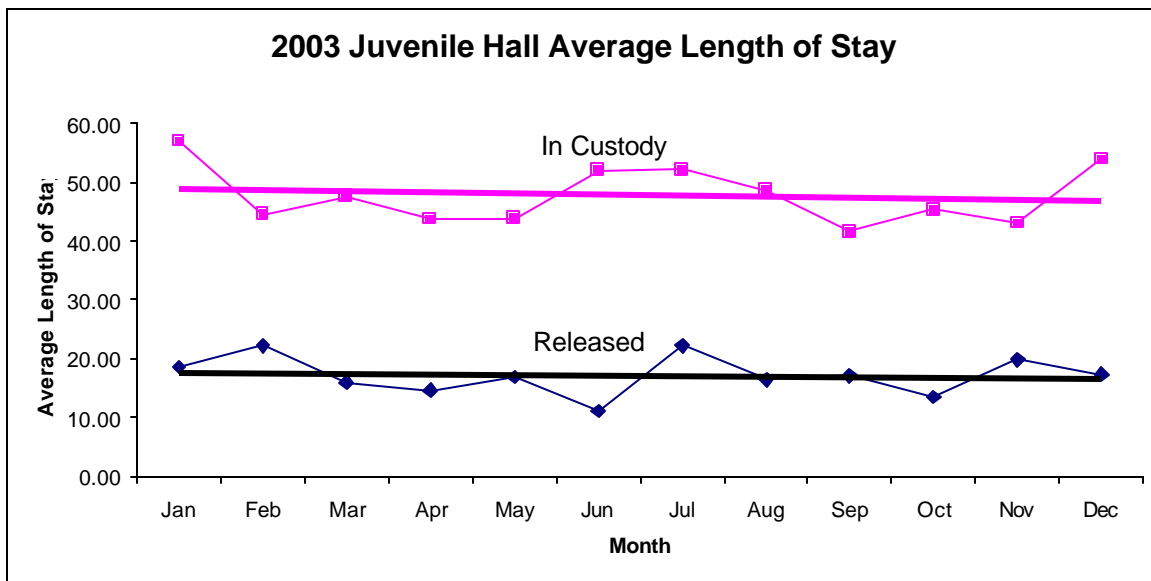


San Francisco Juvenile Probation
Juvenile Hall Average Length of Stay By Month
 (Calendar Years 2002-2003)

2002 Avg. Length of Stay	Jan	Feb	Mar	Apr	May	Jun	Jul	Aug	Sep	Oct	Nov	Dec	Total
¹ Released	18.05	30.44	20.88	17.65	15.50	16.45	20.22	17.15	20.16	14.67	14.03	18.30	18.63
² In Custody	47.30	25.63	40.35	43.29	37.86	52.57	42.41	51.77	34.82	45.11	49.85	58.85	44.15



2003 Avg. Length of Stay	Jan	Feb	Mar	Apr	May	Jun	Jul	Aug	Sep	Oct	Nov	Dec	Total
¹ Released	18.58	22.16	15.97	14.65	16.86	11.07	22.21	16.41	17.13	13.51	19.87	17.30	17.14
² In Custody	56.97	44.53	47.63	43.78	43.80	51.98	52.13	48.67	41.61	45.30	43.04	53.96	47.78



Notes: Less than one day of stay is calculated as one day.

¹ Length of stay is calculated according to release date for those who are released.

² For those still in custody, length of stay is calculated at the last day of the month.