

City and County of San Francisco



Juvenile Probation Department

Monthly Report for October 2011

Presented to the Juvenile Probation Commission

November 8th, 2011

William P. Siffermann
Chief Probation Officer

Prepared by Jose Luis Perla
Information Technology Director
(415) 753-7686
jose.perla@sfgov.org

Table of Contents

Section I Summary Reports

Juvenile Hall, Log Cabin Ranch Summary Statistics	1
Probation Services Summary and California Youth Authority Statistics.....	2
Active Cases by Units.....	3

Section II Current Month General Detail

Probation Referrals, Juvenile Admissions And Average Daily Population	4
Juvenile Hall Admissions and Average Daily Population.....	5
Commitments to out-of-home placement	6
Commitments to California Youth Authority	7
Log Cabin Ranch Admissions and Average Daily Population.....	8
Probation Referrals	9
Juvenile Hall And Log Cabin Ranch Incident Report	10
Bay Area Resident Juvenile Hall Comparison	11
Juvenile Hall Admissions	12
Juvenile Hall Detainees by Detention Reason.....	13
Juvenile Hall Average Daily Population by Rated Capacity	14
Juvenile Hall Average Length of Stay	15

Section III Demographics

Juvenile Hall Detainees by Sex and Race/Ethnic Origin.....	16
Juvenile Hall Detainees by Age.....	17
Juvenile Hall Detainees by Age and Sex	18
Juvenile Hall Detainees by Geographic Residence of Youth.....	19
Juvenile Hall Detainees by Race/Ethnic Origin and Sex.....	20

Section IV
Historical Information

2008-2010 Probation Referrals21
2008-2010 Juvenile Hall Admissions22
2008-2010 Juvenile Hall Average Daily Population23



Section I

Summary Reports

Summary Report for the Month of October 2011

Juvenile Hall	<i>September 2010</i>	<i>September 2011</i>	<i>October 2010</i>	<i>October 2011</i>	<i>YTD 2010</i>	<i>YTD 2011</i>
Admissions	104	109	96	94	1136	1002
Average Daily Population	90	95	84	100	95	89
Average Length of Stay (Releases)	18.16	57.85	27.80	21.62	25.15	29.49
Average Length of Stay (In Custody)	63.09	46.50	68.30	69.15	59.46	54.48
Releases	104	92	107	111	1131	1005
Log Cabin Ranch						
Admissions:						
First Time Commitments	5	1	1	2	23	20
Recommitments	0	1	1	0	1	1
<i>Total</i>	5	2	2	2	24	21
Releases:						
Graduated	1	1	2	0	14	14
Escape	0	0	0	1	4	1
Other releases	1	3	1	0	6	11
<i>Total</i>	2	4	3	1	24	26
Average Daily Population	16	17	18	19	13	20

Summary Report for the Month of October 2011

Probation Services	<i>September 2011</i>	<i>October 2011</i>	<i>Year To Date 2011</i>
Probation Referrals	186	186	1793
Total Petitions including violation of probation	85	91	958
Selected Court Dispositions:			
California Youth Authority	1	0	1
Log Cabin Ranch	2	3	23
Out of Home Placement	14	9	125
Ward Probation	28	21	298
Non-Ward Probation (725a WI)	1	3	26
Informal Probation (654 WI)	9	5	112
Violation of Probation Petitions Filed	18	17	136
California Youth Authority Monthly Count San Francisco County Juvenile Court Cases October 31st, 2011			
Category	Institutions	Parole	
Males			
White	0	1	
Hispanic	0	0	
African American	5	2	
Asian	0	0	
Native American	0	0	
Filipino	0	0	
Pacific Islander	0	1	
Other	0	0	
Total	5	4	
Females			
White	0	0	
Hispanic	0	0	
African American	0	0	
Asian	0	0	
Native American	0	0	
Filipino	0	0	
Pacific Islander	0	0	
Other	0	0	
Total	0	0	
Grand Total	5	4	

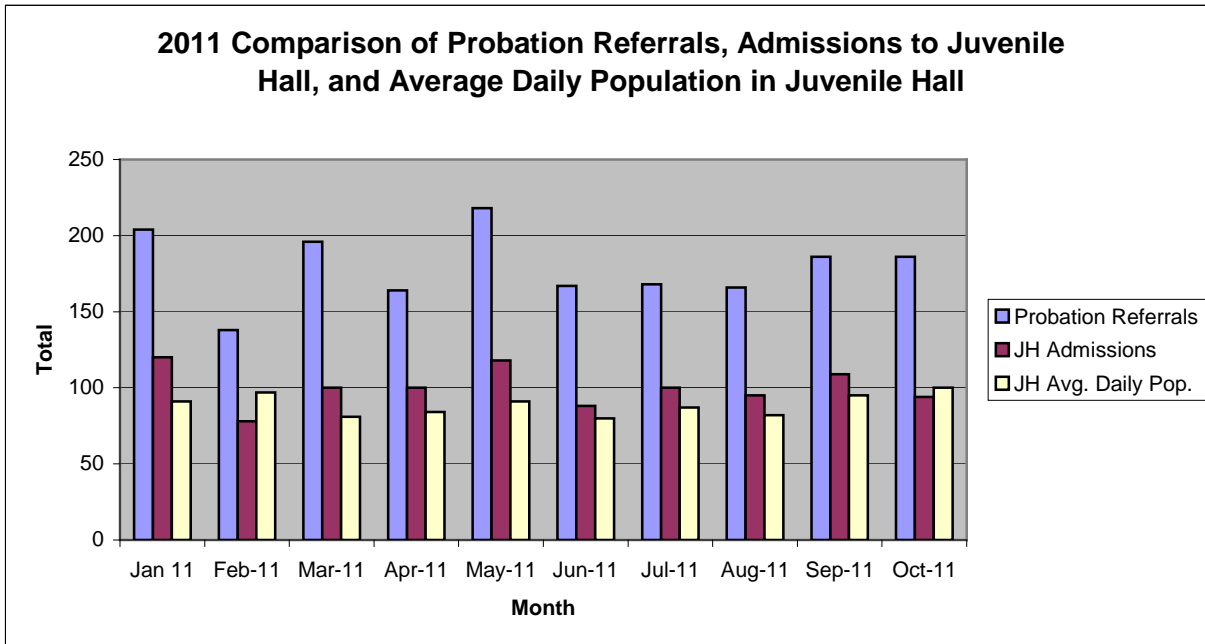
Summary Report for the Month of October 2011

Probation Services			
Active Cases by Units	September 2011	October 2011	October Average # Youth by PO
CARC	200	199	199
Intake Green (Custody Screening Investigation)	97	96	12
Intake Gold (Probation Services 1)	150	157	22
FITS (Probation Services 2)	184	185	18
Serious Offenders (Probation Services 3)	208	201	20
Private Placement (Probation Services 4)	181	175	21
Special Services	6	3	3
<i>Total</i>	1,026	1,016	42
Total Active Intake Cases	460	467	
Total Probation/Supervision Cases	566	549	

Section II
Current Month
General Detail

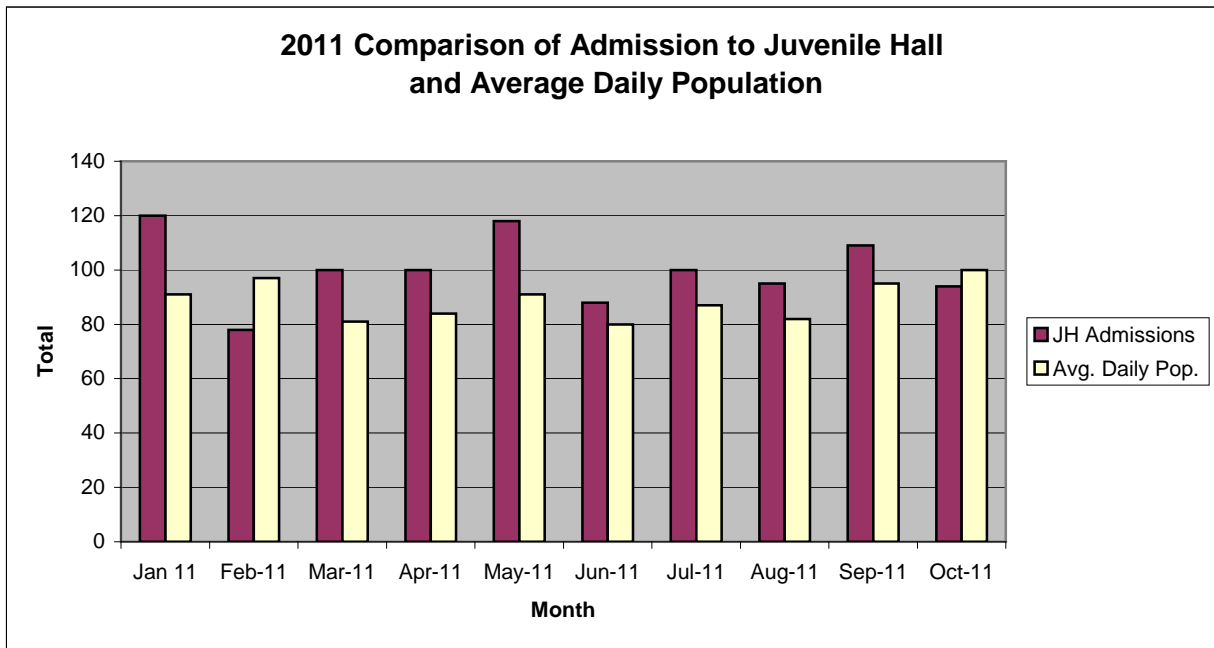
San Francisco Juvenile Probation Department

	Jan 11	Feb-11	Mar-11	Apr-11	May-11	Jun-11	Jul-11	Aug-11	Sep-11	Oct-11	Nov-11	Dec-11
Probation Referrals	204	138	196	164	218	167	168	166	186	186		
JH Admissions	120	78	100	100	118	88	100	95	109	94		
JH Avg. Daily Pop.	91	97	81	84	91	80	87	82	95	100		



San Francisco Juvenile Probation Department

	Jan 11	Feb-11	Mar-11	Apr-11	May-11	Jun-11	Jul-11	Aug-11	Sep-11	Oct-11	Nov-11	Dec-11
JH Admissions	120	78	100	100	118	88	100	95	109	94		
Avg. Daily Pop.	91	97	81	84	91	80	87	82	95	100		

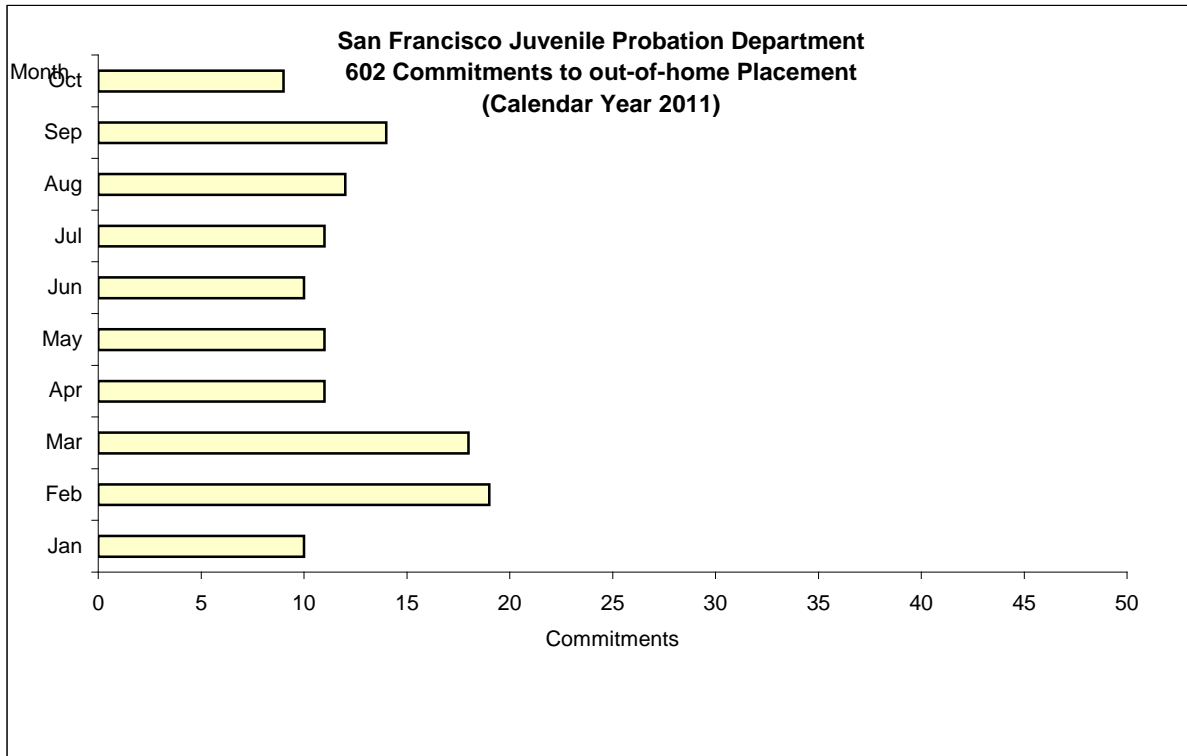


Out-of-Home Placement¹

Commitments of 602's

Calendar Year 2011

Commitments	Jan	Feb	Mar	Apr	May	Jun	Jul	Aug	Sep	Oct	Nov	Dec	Total
2011	10	19	18	11	11	10	11	12	14	9			125



¹ This report is based on 602 Commitments to out-of-home placements. If there is a 601 commitment, it will show as a footnote here. Figures are regularly updated to include reports from previous reporting periods.

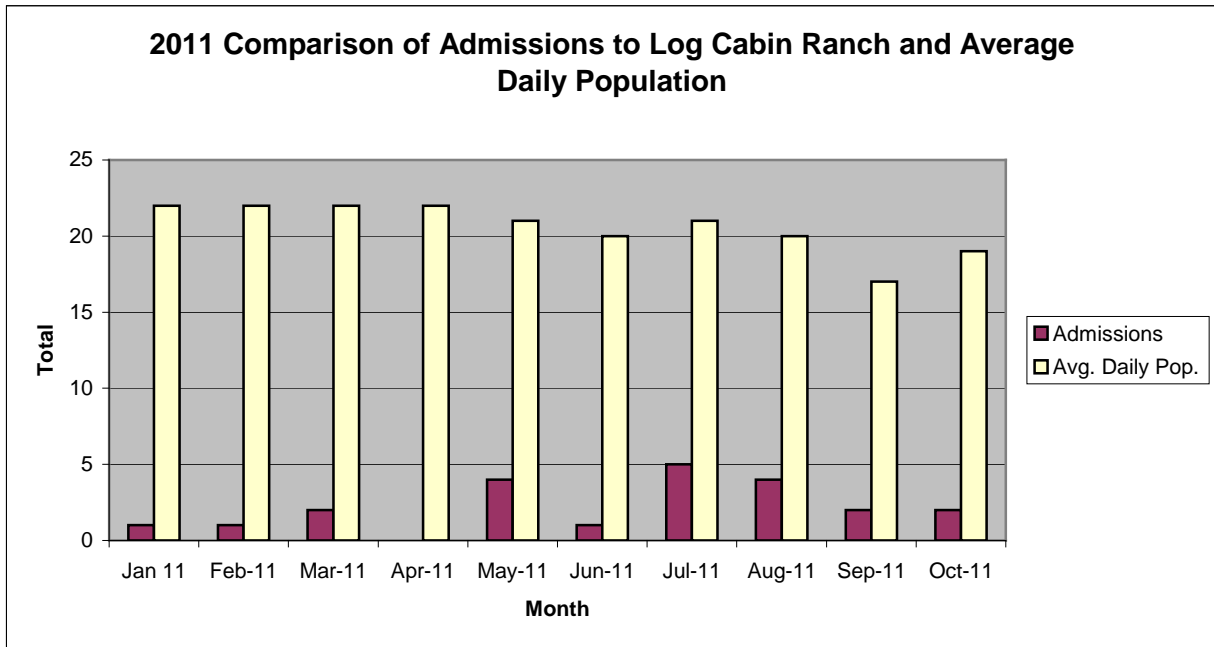
California Youth Authority
 Commitments
 (Calendar Year 2011)

Commitments	Jan	Feb	Mar	Apr	May	Jun	Jul	Aug	Sep	Oct	Nov	Dec	Total
2011	0	0	0	0	0	0	0	0	1	0			1



San Francisco Juvenile Probation Department

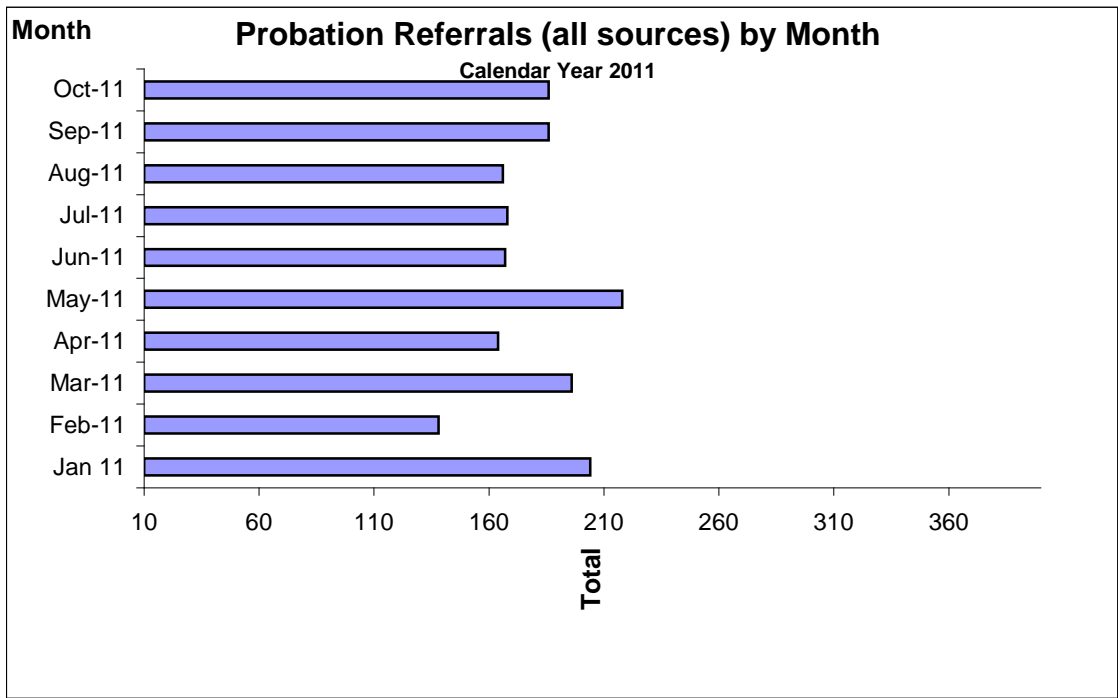
	Jan 11	Feb-11	Mar-11	Apr-11	May-11	Jun-11	Jul-11	Aug-11	Sep-11	Oct-11	Nov-11	Dec-11
Admissions	1	1	2	0	4	1	5	4	2	2		
Avg. Daily Pop.	22	22	22	22	21	20	21	20	17	19		



Probation Referrals by Month Calendar Year 2011

Probation Referrals (all sources) by Month (602 W&I)

Jan 11	204
Feb-11	138
Mar-11	196
Apr-11	164
May-11	218
Jun-11	167
Jul-11	168
Aug-11	166
Sep-11	186
Oct-11	186
Nov-11	
Dec-11	

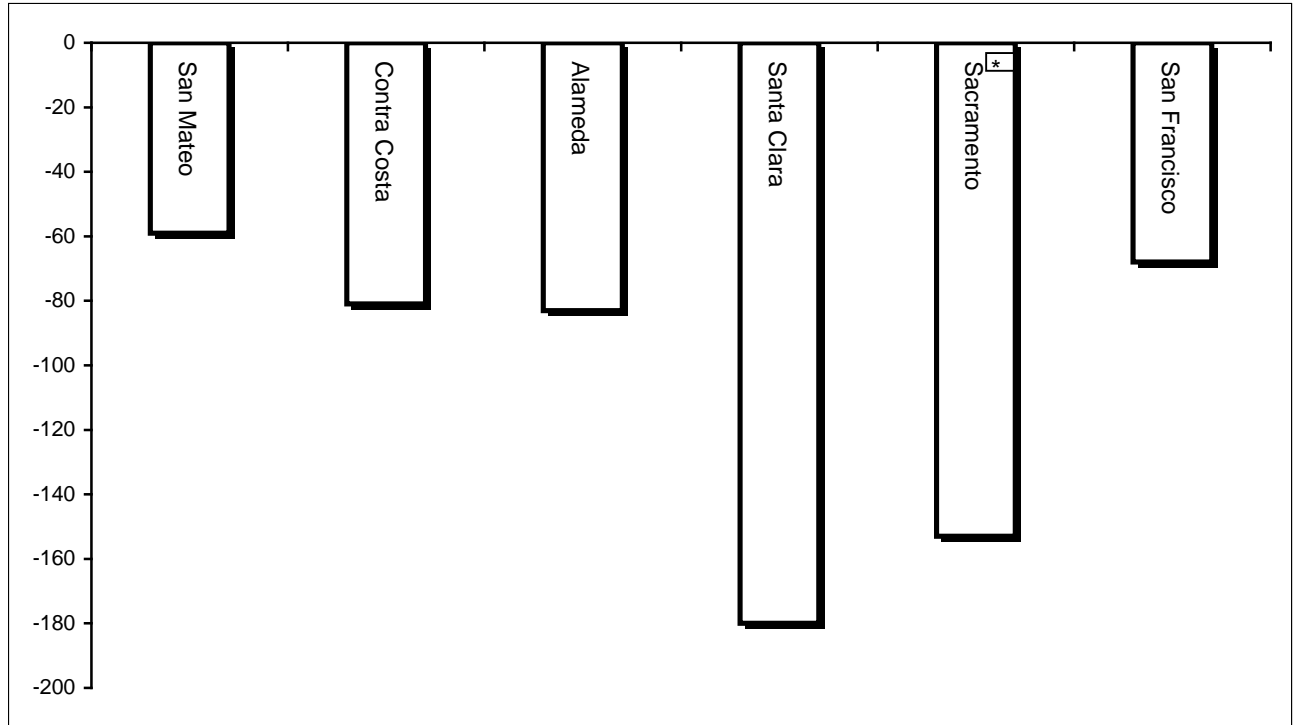


San Francisco Juvenile Probation Department
 Monthly Incident Report Form
 October 2011

Juvenile Hall	Assault on Staff	Fight	Attempted Escape	Fire	Attempted Suicide	Serious Contraband (Weapon illegal drug)	Use of Restraints	Self-Inflicted Injury	Assault on Staff with Injury	Battery Youth on Youth
	1	0	0	0	0		4	3	0	1
	Escape	Death	Suicide	Property Damage	Use of Force	Contraband				
	0	0	0	0	2	3				
Log Cabin Ranch	Battery on Staff	Injury to Staff due to Restraint of Minor	Fight	Battery Youth on Youth	Attempted Escape	AWOL	Attempted Suicide	Serious Contraband	Battery on Staff with Injury	Fire
	0	0	2	2	0	1	0	0	0	0
	Fight With Injury	Battery Youth on Youth with Injury	Escape	Death	Suicide	Major Property Destruction				
	0	0	0	0	0	0				

Bay Area Resident Juvenile Hall Comparison Over/Under Capacity

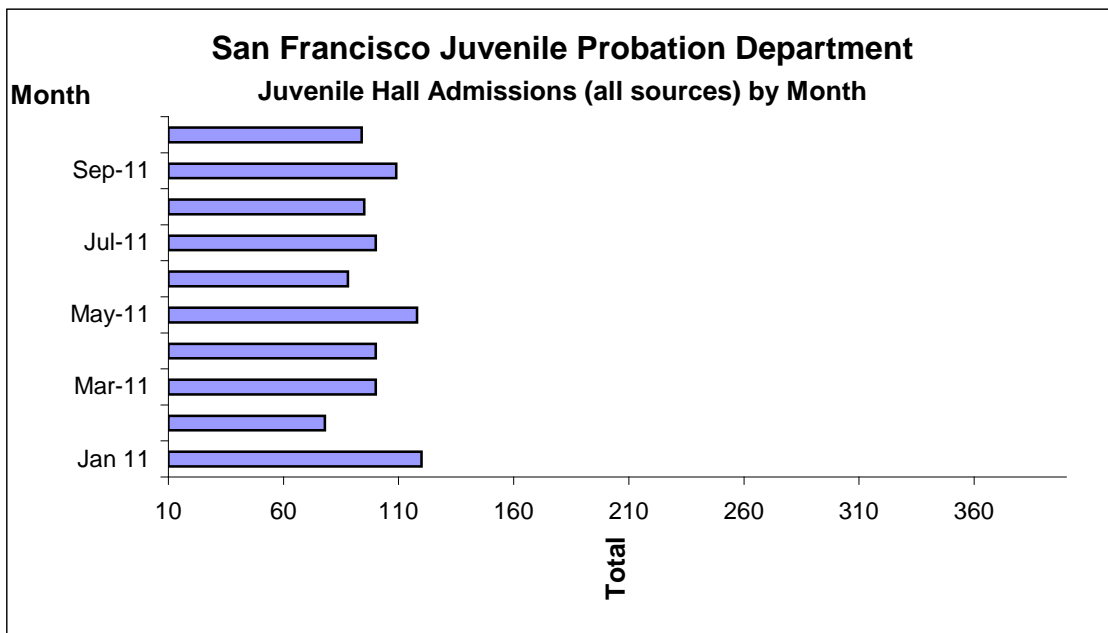
on November 1st, 2011



	Rated Capacity	Actual	Over/Under Capacity
San Mateo	180	121	-59
Contra Costa	240	159	-81
Alameda	280	197	-83
Santa Clara	360	180	-180
Sacramento	308	155	-153
San Francisco	150	82	-68

Juvenile Hall Admissions by Month Calendar Year 2011

Jan 11	120
Feb-11	78
Mar-11	100
Apr-11	100
May-11	118
Jun-11	88
Jul-11	100
Aug-11	95
Sep-11	109
Oct-11	94
Nov-11	
Dec-11	



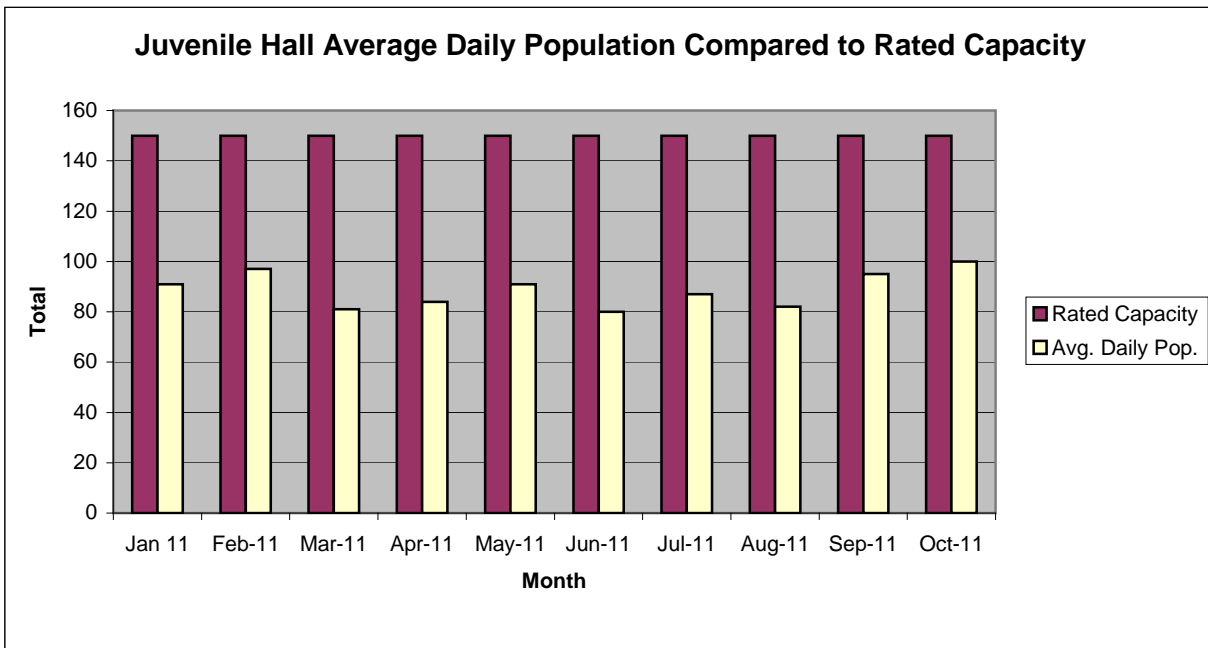
Characteristics of Juvenile Hall Detainees on October 31st, 2011

Detention Reason	Offense Code	MF*	Count	%
MURDER	187 (A) PC	F	3	3.57%
ATTEMPTED MURDER	664 /187 (A) PC	F	8	9.52%
KIDNAPPING	207 (A) PC	F	1	1.19%
ARSON:INHABITED STRUCTURE/PROPERTY	451 (B) PC	F	1	1.19%
SHOOT AT INHABITED DWELLING/VEHICLE/ETC	246 PC	F	1	1.19%
ROBBERY	211 PC	F	18	21.43%
BURGLARY:FIRST DEGREE	459 PC	F	1	1.19%
POSSESS/PURCHASE FOR SALE NARCOTIC/CONTROLLED SUBSTANCE	11351 HS	F	1	1.19%
ASSAULT WITH FIREARM ON PERSON	245 (A)(2) PC	F	1	1.19%
ASSAULT:DEADLY WEAPON OR FORCE:POSSIBLE GREAT BODILY INJ	245 (A) PC	F	1	1.19%
FORCE OR ADW NOT FIREARM:GBI LIKELY	245 (A)(1) PC	F	6	7.14%
ATTEMPTED ROBBERY	664 /211 PC	F	1	1.19%
FELON/ADDICT/ETC POSSESS FIREARM	12021 (A)(1) PC	F	1	1.19%
CARRY CONCEALED WEAPON IN VEHICLE W/PRIOR FELONY CONVICTION	12025 (A)(1) PC	F	1	1.19%
THREATEN CRIME W/INTENT TO TERRORIZE	422 PC	F	2	2.38%
BURGLARY:SECOND DEGREE	459 PC	F	2	2.38%
GRAND THEFT:MONEY/LABOR/PROPERTY OVER \$400	487 (A) PC	F	1	1.19%
RECEIVE/ETC KNOWN STOLEN PROPERTY	496 (A) PC	F	1	1.19%
CARRY LOADED FIREARM IN PUBLIC UNDER SPECIFIC CIRCUMSTANCES	12031 (A)(1) PC	F	1	1.19%
MINOR ILLEGALLY POSSESS CONCEALED WEAPON WITH PRIOR	12101 (A)(1) PC	F	1	1.19%
VANDALISM (\$400 OR MORE)	594 (B)(1) PC	F	1	1.19%
OBSTRUCT/RESIST/ETC PUBLIC/PEACE OFFICER/EMERGENCY MED TECH	148 (A)(1) PC	M	3	3.57%
BURGLARY	459 PC	M	1	1.19%
TOUCH PERSON INTIMATELY AGAINST WILL FOR SEXUAL AROUSAL/ETC	243.4 (E)(1) PC	M	1	1.19%
MINOR ILLEGALLY POSSESS LIVE AMMUNITION	12101 (B)(1) PC	M	1	1.19%
FAIL TO OBEY ORDER OF JUVENILE COURT 602 WI	777 (A)(2) WI	M	3	3.57%
VIOLATION(S) OF HOME SUPERVISION CONDITION	628.1 WI	M	2	2.38%
CHANGE OF PLACEMENT/PLACEMENT FAILURE	737 WI	M	4	4.76%
BENCH WARRANT	BENCH WARRANT XX	X	1	1.19%
WARRANT 602	WRNT602 XX	X	10	11.90%
COURT ORDER 602	CTORD 602 XX	X	4	4.76%
		Total	84	100.00%

*M=Misdemeanor; F=Felony

San Francisco Juvenile Probation Department

	Jan 11	Feb-11	Mar-11	Apr-11	May-11	Jun-11	Jul-11	Aug-11	Sep-11	Oct-11	Nov-11	Dec-11
Rated Capacity	150	150	150	150	150	150	150	150	150	150	150	150
Avg. Daily Pop.	91	97	81	84	91	80	87	82	95	100		



Juvenile Hall Average Length of Stay

For the Month of October 2011

¹Released

Range of Days	<i>1-10 days</i>	<i>11-20 days</i>	<i>21-30 days</i>	<i>30 or more days</i>	Total
# of Youth Released	54	19	14	24	111
% of Population	48.65%	17.12%	12.61%	21.62%	100%
# of Days	219	304	350	1527	2400
% of Total Days	9.13%	12.67%	14.58%	63.63%	100%
Average Length of Stay	4.06	16.00	25.00	63.63	21.62

²In Custody

Range of Days	<i>1-10 days</i>	<i>11-20 days</i>	<i>21-30 days</i>	<i>30 or more days</i>	Total
# of Youth Detained	16	9	11	48	84
% of Population	19.05%	10.71%	13.10%	57.14%	100%
# of Days	72	142	288	5307	5809
% of Total Days	1.24%	2.44%	4.96%	91.36%	100%
Average Length of Stay	4.50	15.78	26.18	110.56	69.15

Notes: Less than one day of stay is calculated as one day.

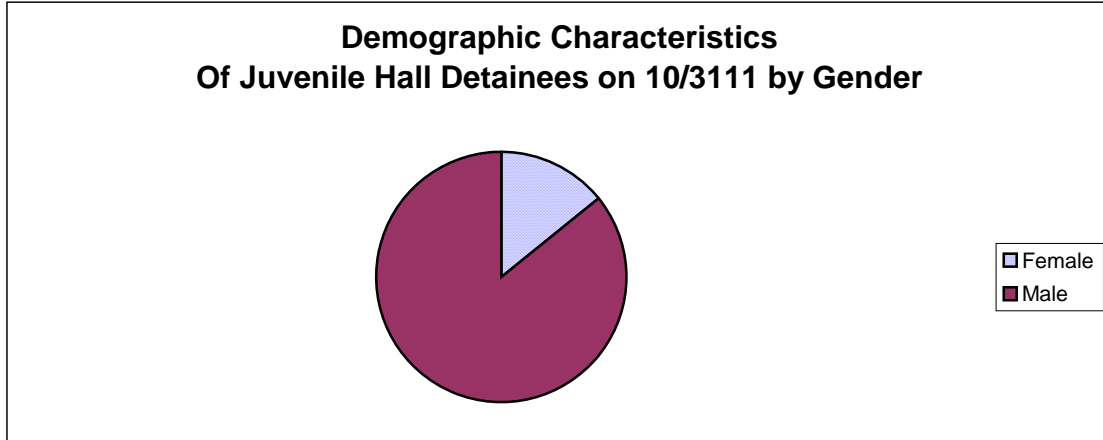
¹Length of stay is calculated according to release date for those who are released.

²For those still in custody, length of stay is calculated at the last day of the month.

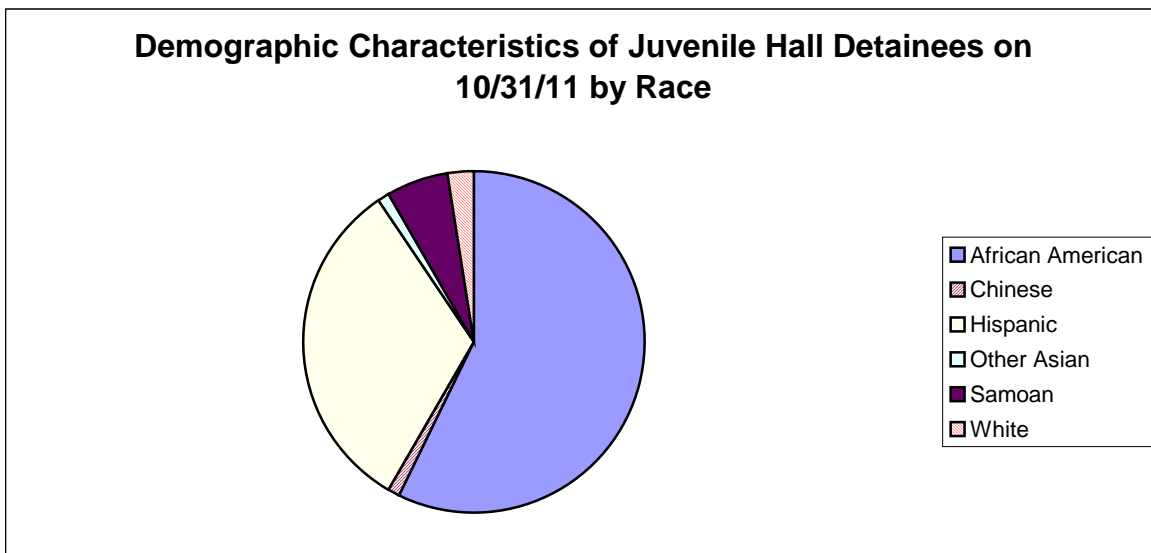
Section III

Demographics

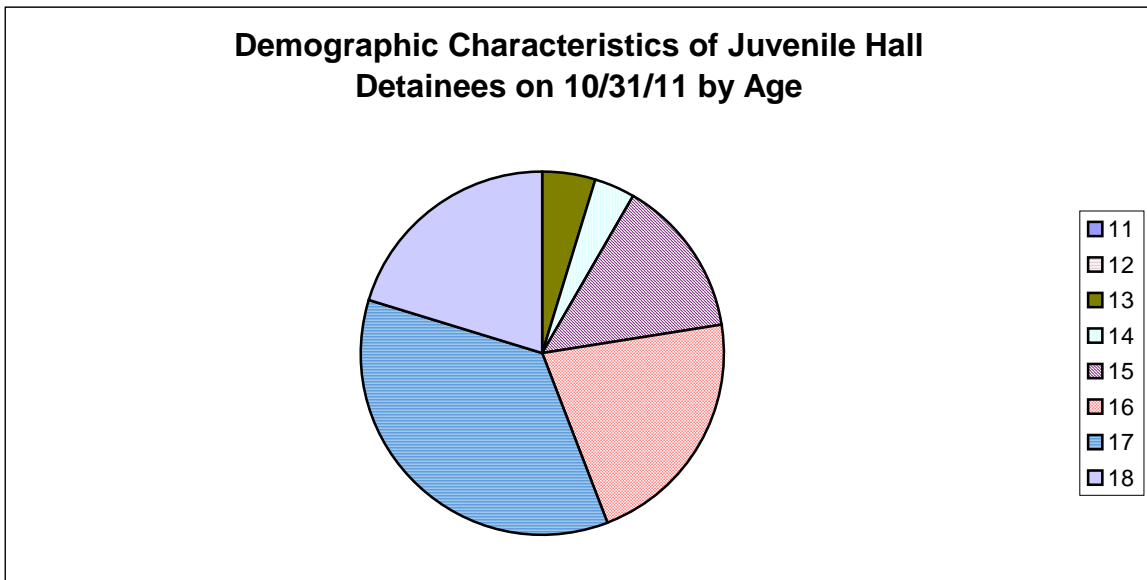
Gender	Frequency	Percent
Female	12	14.29%
Male	72	85.71%
Total	84	100.00%



Race/Ethnic Origin	Frequency	Percent
African American	48	57.14%
Chinese	1	1.19%
Hispanic	27	32.14%
Other Asian	1	1.19%
Samoan	5	5.95%
White	2	2.38%
Total	84	100.00%

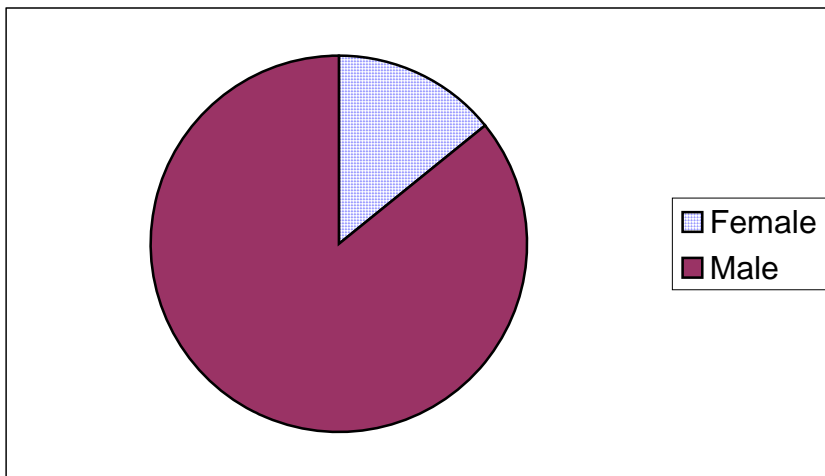


Age	Frequency	Percent
11	0	0.00%
12	0	0.00%
13	4	4.76%
14	3	3.57%
15	12	14.29%
16	18	21.43%
17	30	35.71%
18	17	20.24%
Total	84	100.00%



Demographic Characteristics of Juvenile Hall Detainees
on 10/31/2011
Age by Gender

Age	Female	Male	Total	
11	0	0	0	0.00%
12	0	0	0	0.00%
13	0	4	4	4.76%
14	2	1	3	3.57%
15	4	8	12	14.29%
16	2	16	18	21.43%
17	3	27	30	35.71%
18 and over	1	16	17	20.24%
Total	12	72	84	100.00%
	14.29%	85.71%	100.00%	



Demographic Characteristics
Of Juvenile Hall Detainees on October 31st, 2011

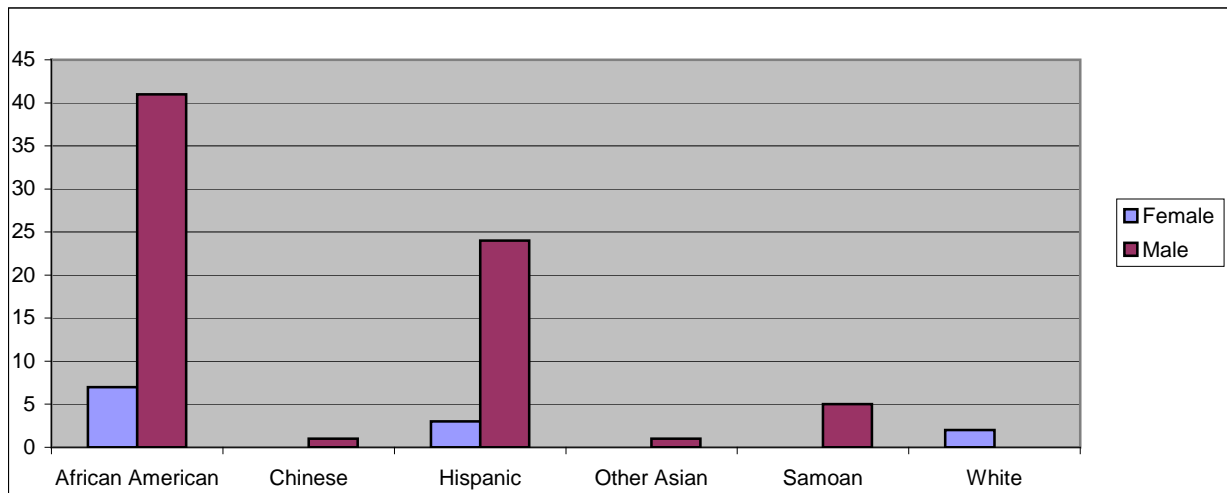
Geographic Residence of Youth	Count	%
Richmond	0	0.0%
Marina	0	0.0%
North of Market/Downtown	1	1.2%
Treasure Island/Yerba Buena Island	0	0.0%
Western Addition	7	8.3%
South of Market/Tenderloin	3	3.6%
Sunset	1	1.2%
Haight Ashbury/Castro/Upper Market	0	0.0%
Inner Mission	11	13.1%
Potrero	1	1.2%
Parkside	2	2.4%
Ingleside (West of Twin Peaks)	4	4.8%
Outer Mission	18	21.4%
Bayview	18	21.4%
Non-San Francisco and Unavailable	18	21.4%
Total	84	100.0%

Non-San Francisco and Unavailable	Count	%
Daly City	1	5.6%
Fairfield	1	5.6%
Fremont	1	5.6%
Hayward	1	5.6%
Marin City	1	5.6%
Oakland	3	16.7%
Pittsburg	1	5.6%
South San Francisco	1	5.6%
Unavailable	8	44.4%
Total	18	100.0%

Demographic Characteristics
Of Juvenile Hall Detainees on October 31st, 2011

Race/Ethnic Origin by Gender

Race/Ethnicity	Female	Male	Total	%
African American	7	41	48	57.1%
Chinese	0	1	1	1.2%
Hispanic	3	24	27	32.1%
Other Asian	0	1	1	1.2%
Samoan	0	5	5	6.0%
White	2	0	2	2.4%
Total	12	72	84	100.0%

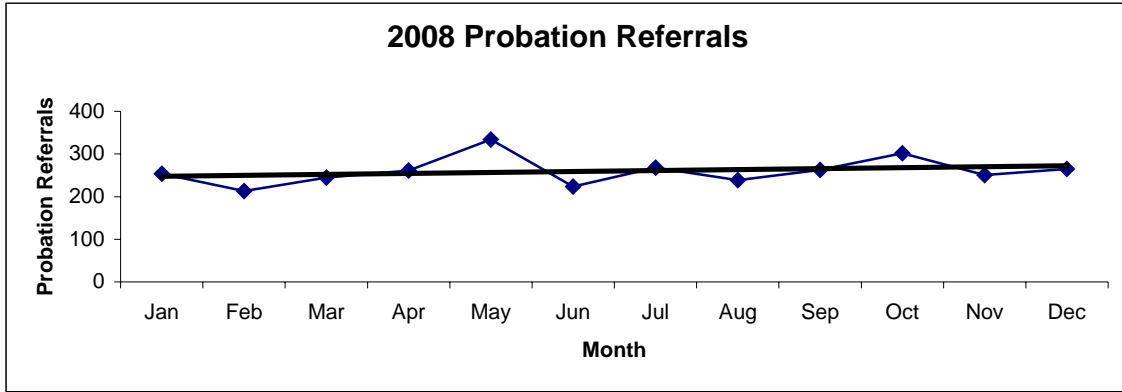


Section IV

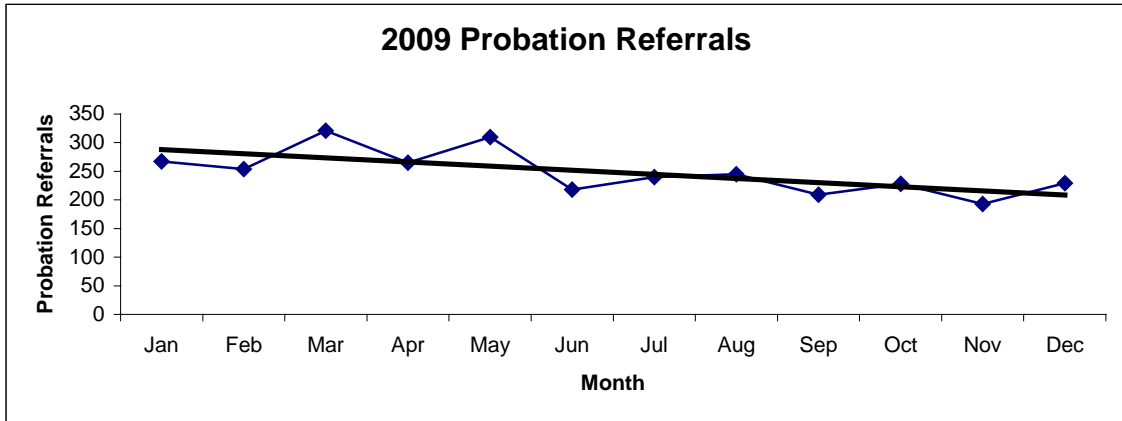
Historical Information

San Francisco Juvenile Probation Department
Probation Referrals (all sources) By Month
(2008-2010)

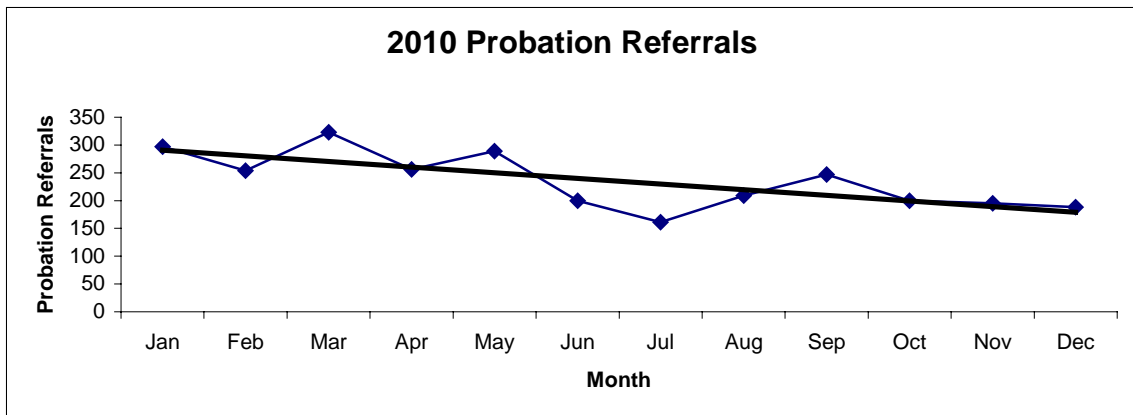
2008 Probation Referrals	Jan	Feb	Mar	Apr	May	Jun	Jul	Aug	Sep	Oct	Nov	Dec	Total
	254	213	245	261	334	224	268	239	263	302	251	265	3119



2009 Probation Referrals	Jan	Feb	Mar	Apr	May	Jun	Jul	Aug	Sep	Oct	Nov	Dec	Total
	267	254	321	265	310	218	240	245	209	228	193	229	2979

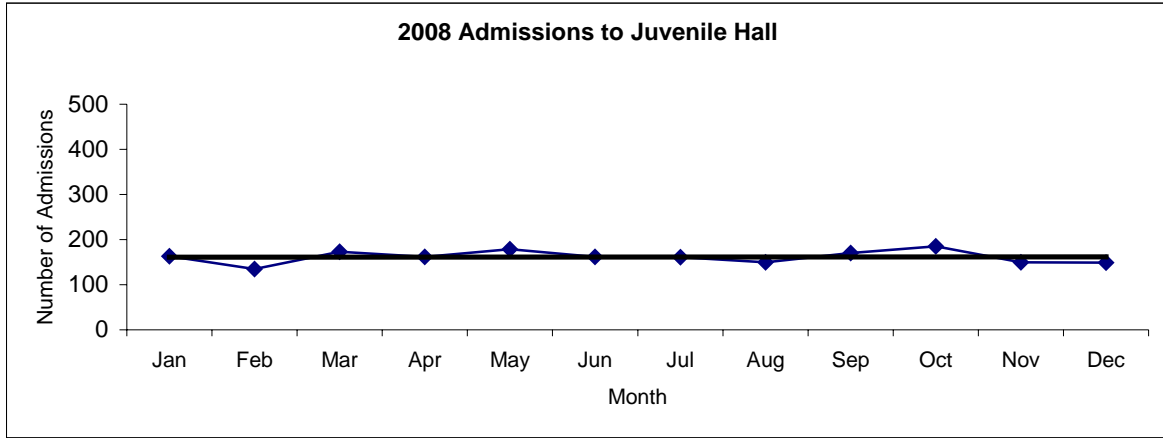


2010 Probation Referrals	Jan	Feb	Mar	Apr	May	Jun	Jul	Aug	Sep	Oct	Nov	Dec	Total
	297	254	323	256	289	200	161	209	247	200	195	188	2819

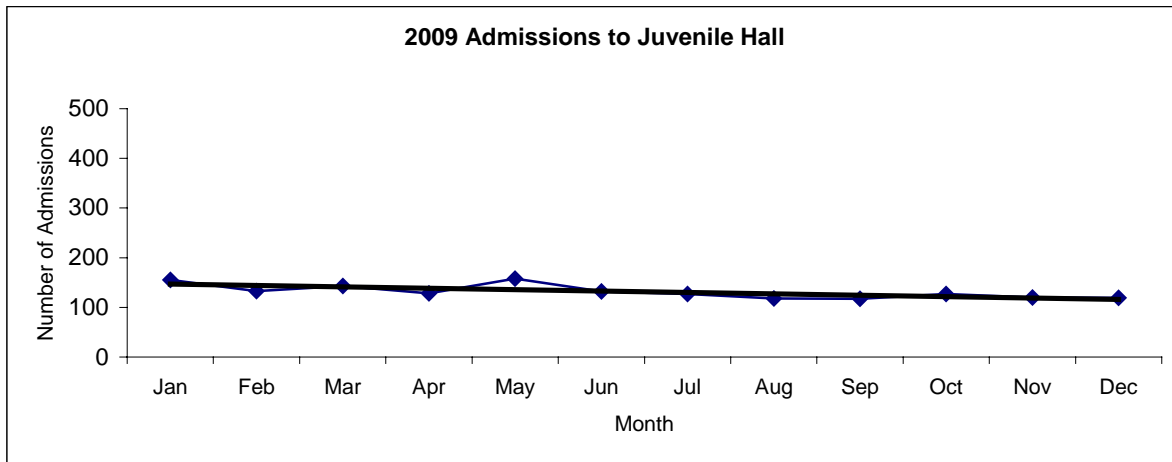


**San Francisco Juvenile Probation
Juvenile Hall Admissions By Month
(2008-2010)**

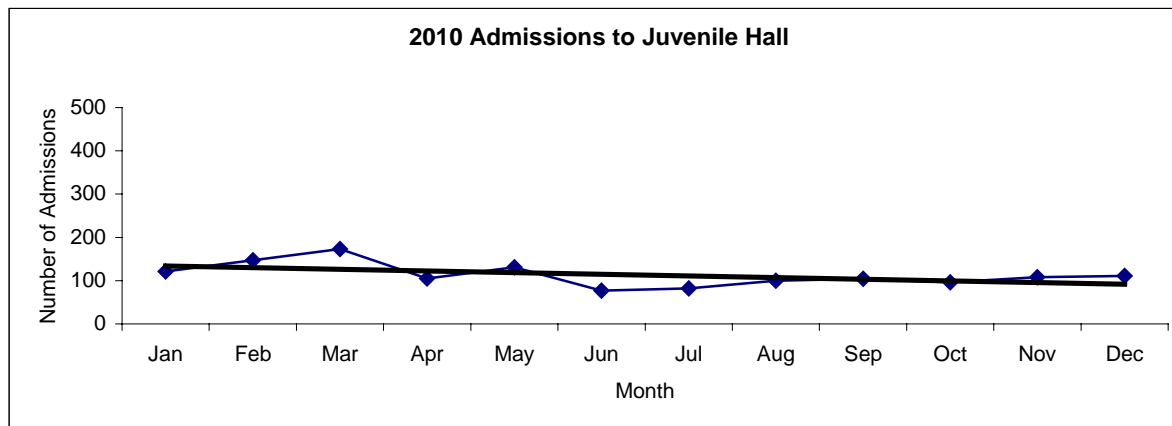
2008 Admissions	Jan	Feb	Mar	Apr	May	Jun	Jul	Aug	Sep	Oct	Nov	Dec	Total
	163	135	173	162	179	162	161	150	170	185	150	149	1939



2009 Admissions	Jan	Feb	Mar	Apr	May	Jun	Jul	Aug	Sep	Oct	Nov	Dec	Total
	155	133	143	128	158	132	127	118	117	127	120	119	1577

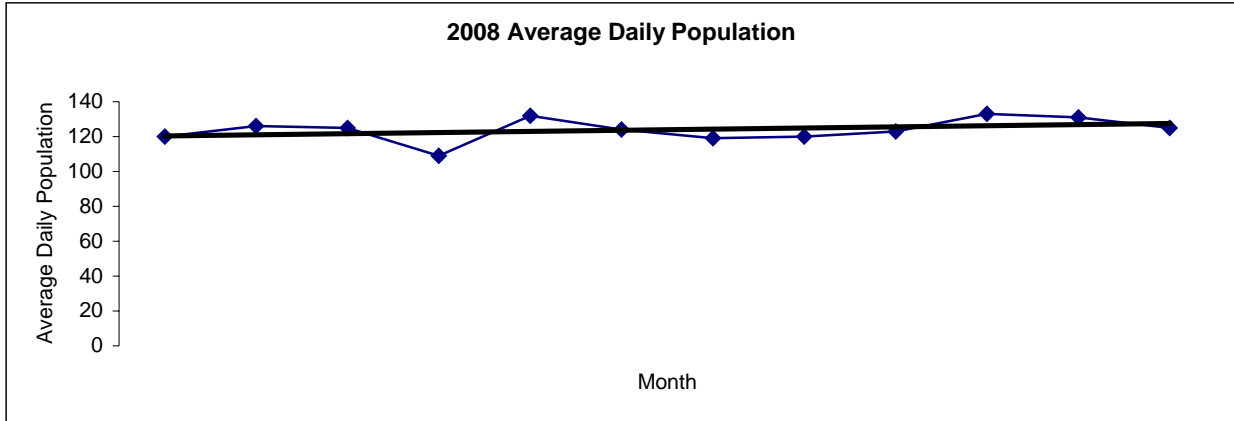


2010 Admissions	Jan	Feb	Mar	Apr	May	Jun	Jul	Aug	Sep	Oct	Nov	Dec	Total
	121	147	173	105	131	77	82	100	104	96	108	111	1355

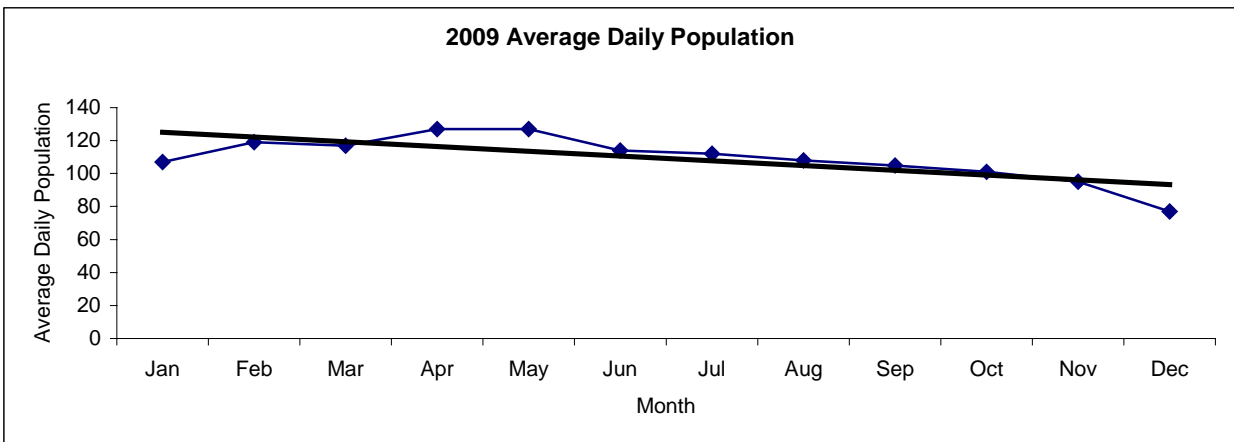


San Francisco Juvenile Probation
Juvenile Hall Average Daily Population By Month
 (2008-2010)

2008 Avg. Daily Pop.	Jan	Feb	Mar	Apr	May	Jun	Jul	Aug	Sep	Oct	Nov	Dec	Total
	120	126	125	109	132	124	119	120	123	133	131	125	124



2009 Avg. Daily Pop.	Jan	Feb	Mar	Apr	May	Jun	Jul	Aug	Sep	Oct	Nov	Dec	Total
	107	119	117	127	127	114	112	108	105	101	95	77	109



2010 Avg. Daily Pop.	Jan	Feb	Mar	Apr	May	Jun	Jul	Aug	Sep	Oct	Nov	Dec	Total
	85	104	110	107	99	97	90	88	90	84	79	92	94

