

City and County of San Francisco



Juvenile Probation Department

Monthly Report for February 2009

Presented to the Juvenile Probation Commission

March 11th, 2009

William P. Siffermann
Chief Probation Officer

Prepared by Jose Luis Perla
Information Technology Director
(415) 753-7686
jose.perla@sfgov.org

Section I

Summary Reports

Summary Report for the Month of February 2009

Juvenile Hall	<i>January 2008</i>	<i>January 2009</i>	<i>February 2008</i>	<i>February 2009</i>	<i>YTD 2008</i>	<i>YTD 2009</i>
Admissions	163	155	135	133	298	296
Average Daily Population	120	107.61	126	119	123	119
Average Length of Stay (Releases)	26.32	21.68	21.68	21.47	24	21.58
Average Length of Stay (In Custody)	39.49	64.62	46.09	63.56	42.79	64.09
Releases	142	148	148	120	290	262
Log Cabin Ranch						
Admissions:						
First Time Commitments	0	3	3	2	3	5
Recommitments	0	1	0	0	0	1
<i>Total</i>	0	4	3	2	3	6
Releases:						
Graduated	2	0	2	2	4	2
Escape	0	0	0	0	0	0
Other releases	0	2	0	2	0	4
<i>Total</i>	2	2	2	4	4	6
Average Daily Population	21	17	21	19	21	18
Incident Reports						
Juvenile Hall	43	77	52	60	95	137
Log Cabin Ranch	2	1	1	4	3	5
<i>Total</i>	45	78	53	64	98	142

Summary Report for the Month of February 2009

Probation Services	January 2009	February 2009	Year To Date 2009
Probation Referrals	267	254	521
Total Petitions including violation of probation	119	107	226
Selected Court Dispositions:			
California Youth Authority	0	0	0
Log Cabin Ranch	4	2	6
Out of Home Placement	14	9	23
Ward Probation	29	31	60
Non-Ward Probation (725a WI)	6	2	8
Informal Probation (654 WI)	20	10	30
Violation of Probation Petitions Filed	7	14	21
California Youth Authority Monthly Count San Francisco County Juvenile Court Cases February 28 th , 2009			
Category	Institutions	Parole	
Males			
White	0	1	
Hispanic	1	5	
African American	4	8	
Asian	0	1	
Native American	0	0	
Filipino	0	0	
Pacific Islander	1	1	
Other	0	0	
Total	6	16	
Females			
White	0	0	
Hispanic	0	2	
African American	1	0	
Asian	0	0	
Native American	0	0	
Filipino	0	0	
Pacific Islander	0	0	
Other	0	0	
Total	1	2	
Grand Total	7	18	

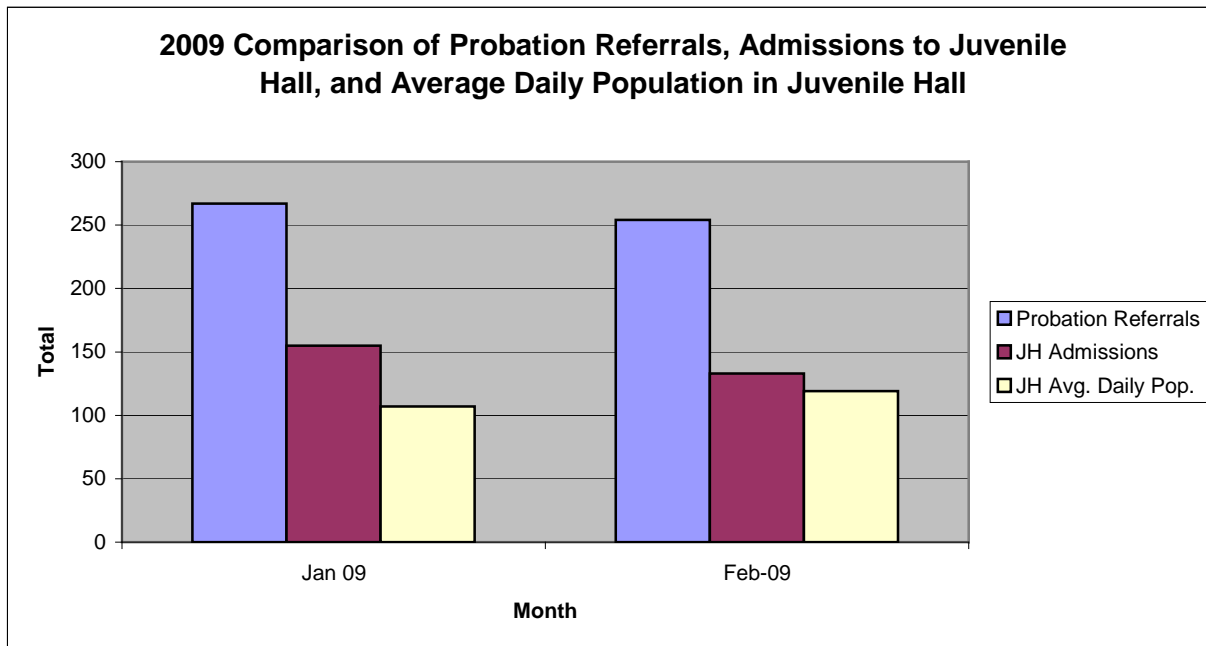
Summary Report for the Month of February 2009

Probation Services			
Active Cases by Units	January 2009	February 2009	February Average # Youth by PO
CARC	93	106	106
Intake Green (Custody Screening Investigation)	165	161	20
Intake Gold (Probation Services 1)	229	238	34
Probation Services 2	220	219	21
Probation Services 3	317	267	26
Probation Services 4	210	210	26
Special Services	10	56	14
<i>Total</i>	1,244	1,257	35
Total Active Intake Cases	544	561	
Total Probation/Supervision Cases	700	696	

Section II
Current Month
General Detail

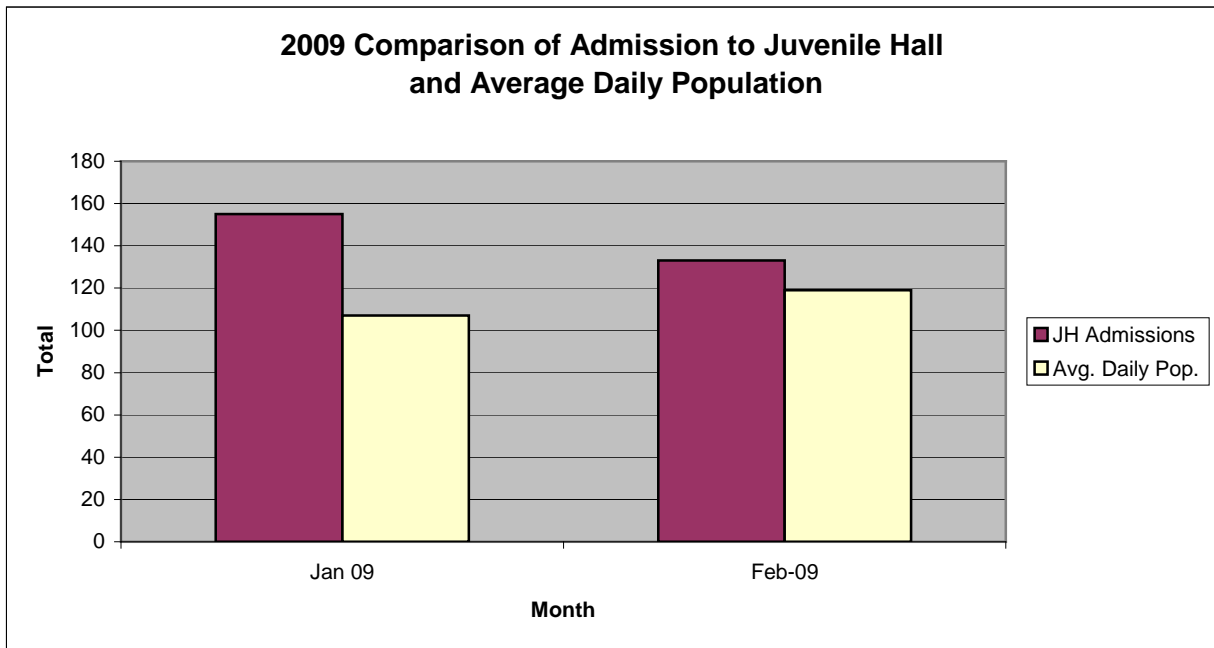
San Francisco Juvenile Probation Department

	Jan 09	Feb-09	Mar-09	Apr-09	May-09	Jun-09	Jul-09	Aug-09	Sep-09	Oct-09	Nov-09	Dec-09
Probation Referrals	267	254										
JH Admissions	155	133										
JH Avg. Daily Pop.	107	119										



San Francisco Juvenile Probation Department

	Jan 09	Feb-09	Mar-09	Apr-09	May-09	Jun-09	Jul-09	Aug-09	Sep-09	Oct-09	Nov-09	Dec-09
JH Admissions	155	133										
Avg. Daily Pop.	107	119										

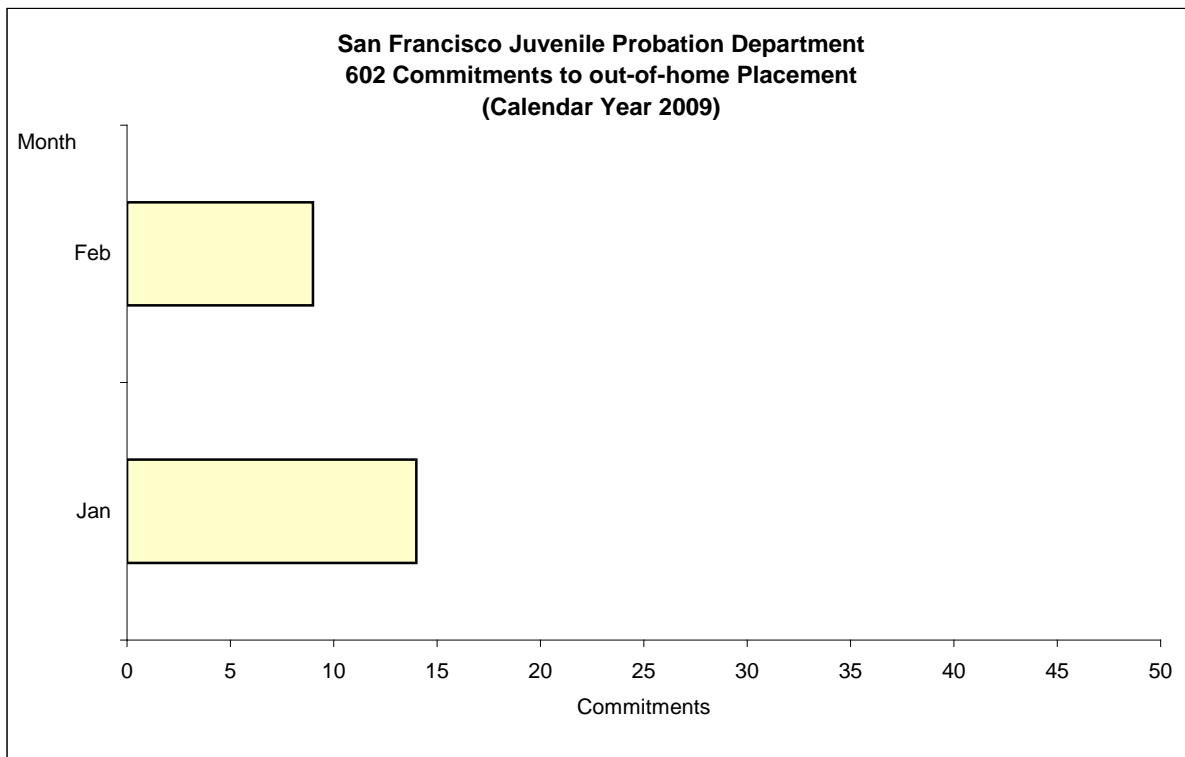


Out-of-Home Placement¹

Commitments of 602's

Calendar Year 2009

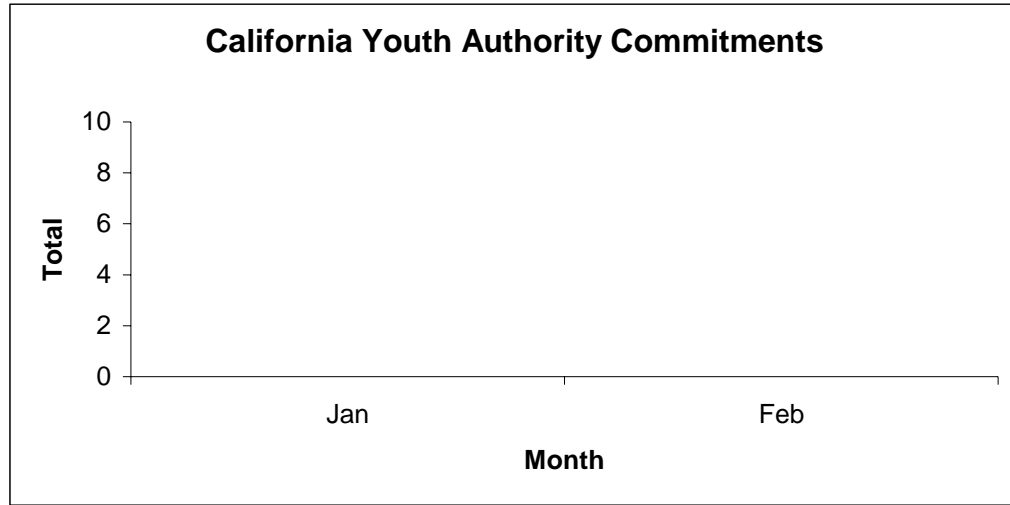
Commitments	Jan	Feb	Mar	Apr	May	Jun	Jul	Aug	Sep	Oct	Nov	Dec	Total
2009	14	9											23



¹ This report is based on 602 Commitments to out-of-home placements. If there is a 601 commitment, it will show as a footnote here. Figures are regularly updated to include reports from previous reporting periods.

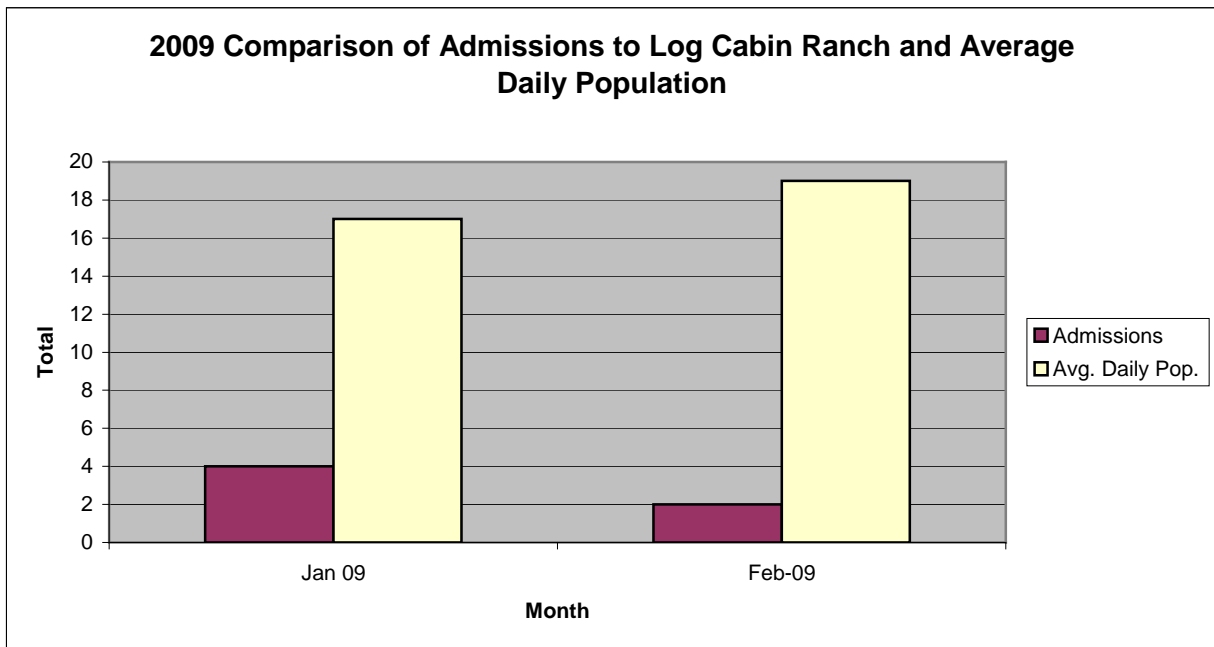
California Youth Authority Commitments (Calendar Year 2009)

Commitments	Jan	Feb	Mar	Apr	May	Jun	Jul	Aug	Sep	Oct	Nov	Dec	Total
2009	0	0											0



San Francisco Juvenile Probation Department

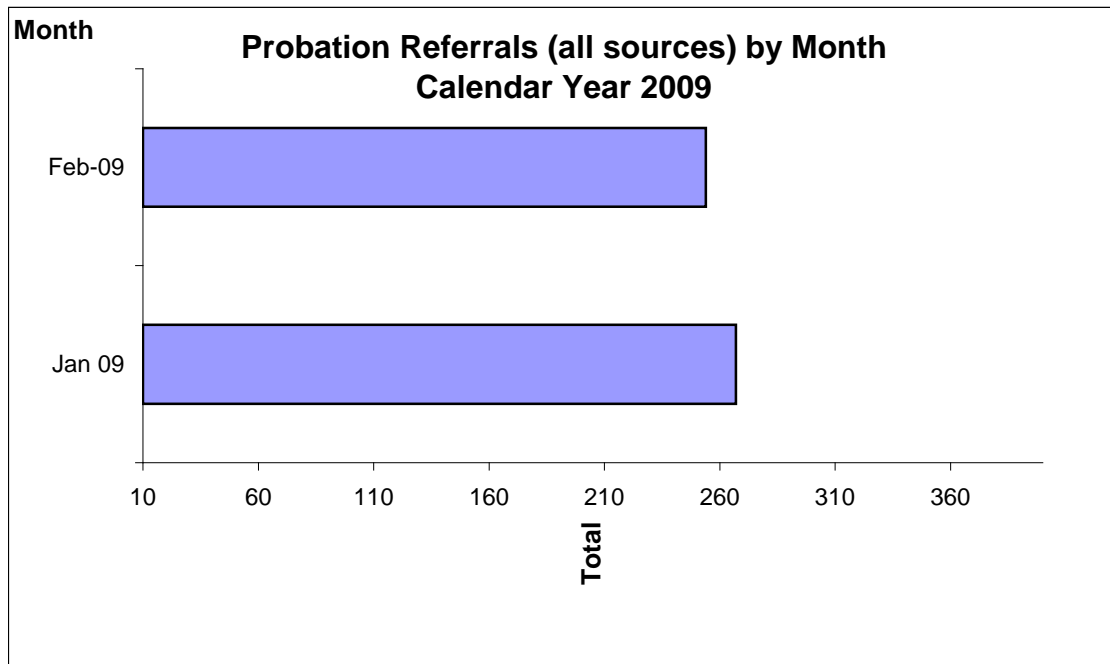
	Jan 09	Feb-09	Mar-09	Apr-09	May-09	Jun-09	Jul-09	Aug-09	Sep-09	Oct-09	Nov-09	Dec-09
Admissions	4	2										
Avg. Daily Pop.	17	19										



Probation Referrals by Month Calendar Year 2009

Probation Referrals (all sources) by Month (602 W&I)

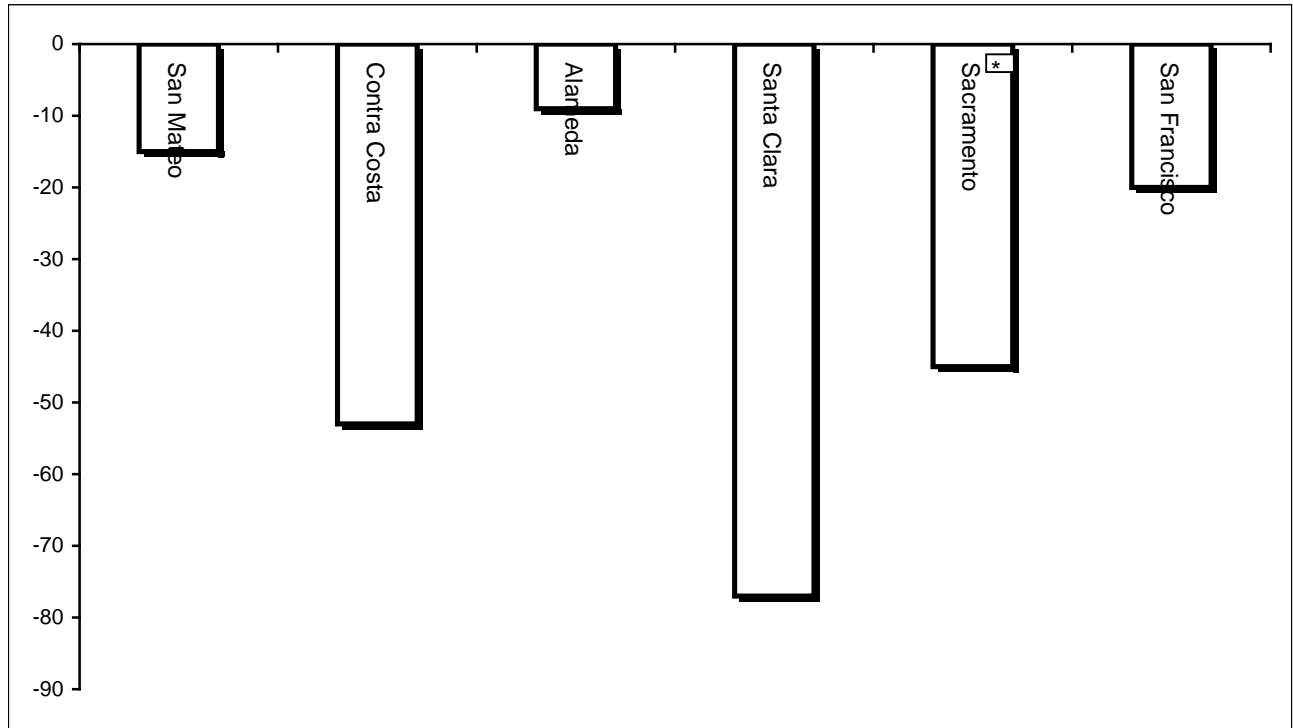
Jan 09	267
Feb-09	254
Mar-09	
Apr-09	
May-09	
Jun-09	
Jul-09	
Aug-09	
Sep-09	
Oct-09	
Nov-09	
Dec-09	



San Francisco Juvenile Probation Department
Monthly Incident Report
MONTH/YEAR: February 2009

Log Cabin Ranch	Battery on Staff	Injury to Staff due to Restraint of Minor	Fight	Battery Youth on Youth	Attempted Escape	AWOL	Attempted Suicide	Serious Contraband (Weapon Illegal Drug)	Use of Restraints	Self Inflicted Injuries
	0	0	1	1	0	0	0	0	0	0
	Battery on Staff with Injury	Fire	Fight with Injury	Battery Youth on Youth with Injury	Escape	Death	Suicide	Major Property Destruction	Use of Force	
	0	0	1	1	0	0	0	0	0	
Juvenile Hall	Battery on Staff	Injury to Staff due to Restraint of Minor	Fight	Battery Youth on Youth	Attempted Escape	AWOL	Attempted Suicide	Serious Contraband (Weapon Illegal Drug)	Use of Restraints	Self Inflicted Injuries
	4	0	6	5	2	0	0	18	3	0
	Battery on Staff with Injury	Fire	Fight with Injury	Battery Youth on Youth with Injury	Escape	Death	Suicide	Major Property Destruction	Use of Force	
	0	0	3	0	0	0	0	5	14	

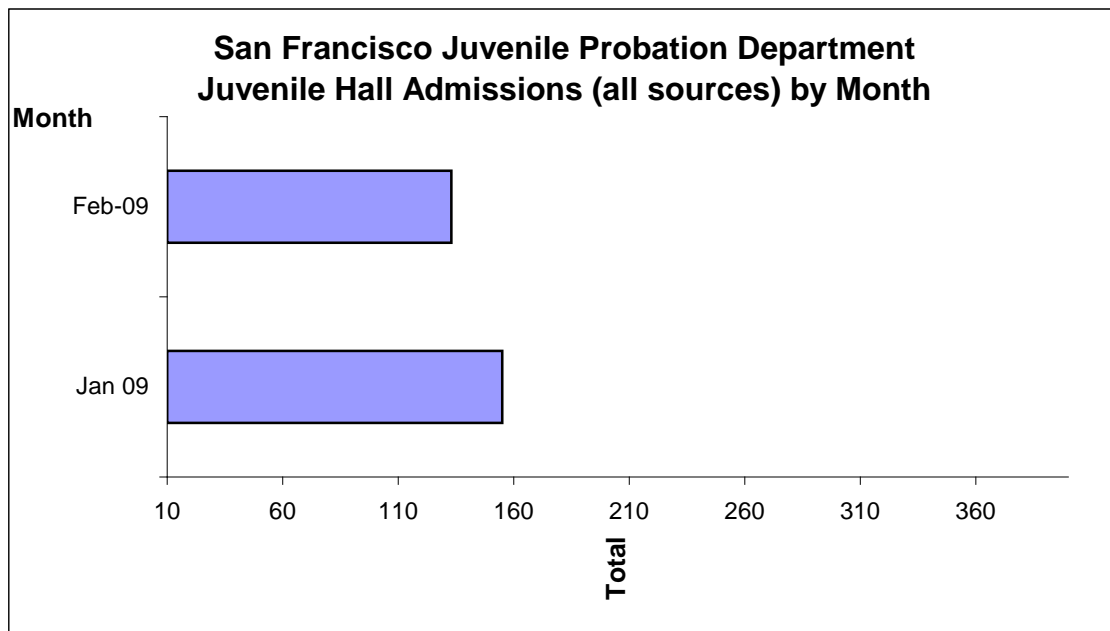
Bay Area Resident Juvenile Hall Comparison
Over/Under Capacity
on March 2nd, 2009



	Rated Capacity	Actual	Over/Under Capacity
San Mateo	180	165	-15
Contra Costa	240	187	-53
Alameda	280	271	-9
Santa Clara	360	283	-77
Sacramento	308	263	-45
San Francisco	150	130	-20

Juvenile Hall Admissions by Month Calendar Year 2009

Jan 09	155
Feb-09	133
Mar-09	
Apr-09	
May-09	
Jun-09	
Jul-09	
Aug-09	
Sep-09	
Oct-09	
Nov-09	
Dec-09	

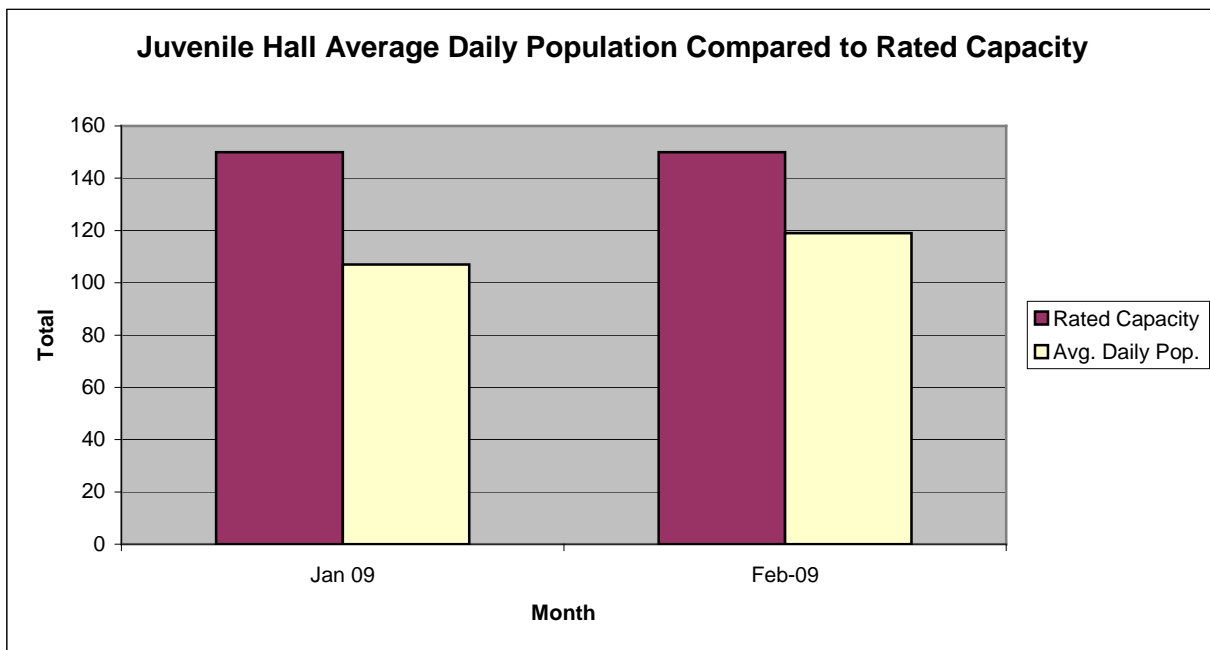


Characteristics of Juvenile Hall Detainees on February 28th, 2009

Detention Reason	Offense Code	MF*	Count	%
MURDER	187 (A) PC	F	4	3.05%
ATTEMPTED MURDER	664 /187 (A) PC	F	5	3.82%
AGGRAVATED MAYHEM	205 PC	F	1	0.76%
SEXUAL PENETRATION WITH FORCE/ETC	289 (A)(1) PC	F	1	0.76%
CARJACKING	215 (A) PC	F	1	0.76%
ROBBERY	211 PC	F	32	24.43%
ASSAULT W/DEADLY WEAPON W/LIKELY GBI ON CUSTODIAL OFFICER	245.3 PC	F	2	1.53%
TRANSPORT/SELL NARCOTIC/CONTROLLED SUBSTANCE	11352 (A) HS	F	3	2.29%
POSSESS/PURCHASE COCAINE BASE FOR SALE	11351.5 HS	F	1	0.76%
BURGLARY	459 PC	F	9	6.87%
EXTORTION BY THREAT:INJURY	519.1 PC	F	1	0.76%
SEXUAL BATTERY	243.4(A) PC	F	1	0.76%
INFLICT CORPORAL INJURY ON SPOUSE/COHABITANT	273.5 PC	F	1	0.76%
FORCE OR ADW NOT FIREARM:GBI LIKELY	245 (A)(1) PC	F	1	0.76%
RESIST PEACE OFFICER RESULTING IN DEATH/SBI	148.10(A) PC	F	1	0.76%
ATTEMPTED ROBBERY	664 /211 PC	F	2	1.53%
POSSESS MARIJUANA FOR SALE	11359 HS	F	1	0.76%
FELON/ADDICT/ETC POSSESS FIREARM	12021 (A)(1) PC	F	1	0.76%
CARRY CONCEALED WEAPON WHILE ENGAGED IN CRIMINAL STREET GANG	12025 (B)(3) PC	F	1	0.76%
BATTERY ON SCHOOL EMPLOYEE W/INJURY	243.6 PC	F	1	0.76%
WILLFUL DISCHARGE FIREARM IN NEGLIGENT MANNER	246.3 PC	F	1	0.76%
THREATEN CRIME W/INTENT TO TERRORIZE	422 PC	F	3	2.29%
GRAND THEFT FROM PERSON	487 (C) PC	F	1	0.76%
TAKE VEHICLE W/O OWNER'S CONSENT/VEHICLE THEFT	10851 (A) VC	F	1	0.76%
PERSONATE TO MAKE OTHER LIABLE	529.3 PC	F	1	0.76%
PROHIBITED PERSON OWN/ETC AMMUNITION/ETC	12316 (B)(1) PC	F	1	0.76%
CARRY CONCEALED WEAPON ON PERSON W/PRIOR CONVICTION	12025 (A)(2) PC	F	2	1.53%
VANDALISM (\$400 OR MORE)	594 (B)(1) PC	F	1	0.76%
OBSTRUCT/RESIST/ETC PUBLIC/PEACE OFFICER/EMERGENCY MED TECH	148 (A)(1) PC	M	1	0.76%
FORCE/ASSAULT WITH A DEADLY WEAPON-NOT FIREARM:GBI LIKELY	245 (A)(1) PC	M	1	0.76%
BURGLARY	459 PC	M	1	0.76%
BATTERY ON PERSON	243 (A) PC	M	1	0.76%
DISORDERLY CONDUCT:ALCOHOL	647 (F) PC	M	1	0.76%
TRESPASS:CLOSED LANDS	602 (O) PC	M	1	0.76%
FAIL TO OBEY ORDER OF JUVENILE COURT 602 WI	777 (A)(2) WI	M	5	3.82%
CHANGE OF PLACEMENT/PLACEMENT FAILURE	737 WI	M	12	9.16%
WARRANT	WRNT602		14	10.69%
COURT ORDER	CTORD 602		13	9.92%
*F=Felony; M=Misdemeanor		Total	131	100.00%

San Francisco Juvenile Probation Department

	Jan 09	Feb-09	Mar-09	Apr-09	May-09	Jun-09	Jul-09	Aug-09	Sep-09	Oct-09	Nov-09	Dec-09
Rated Capacity	150	150										
Avg. Daily Pop.	107	119										



Juvenile Hall Average Length of Stay

For the Month of February 2009

¹Released

Range of Days	<i>1-10 days</i>	<i>11-20 days</i>	<i>21-30 days</i>	<i>30 or more days</i>	Total
# of Youth Released	64	21	14	21	120
% of Population	53.33%	17.50%	11.67%	17.50%	100%
# of Days	288	298	347	1643	2576
% of Total Days	11.18%	11.57%	13.47%	63.78%	100%
Average Length of Stay	4.50	14.19	24.79	78.24	21.47

²In Custody

Range of Days	<i>1-10 days</i>	<i>11-20 days</i>	<i>21-30 days</i>	<i>30 or more days</i>	Total
# of Youth Detained	38	24	9	60	131
% of Population	29.01%	18.32%	6.87%	45.80%	100%
# of Days	192	356	239	7540	8327
% of Total Days	2.31%	4.28%	2.87%	90.55%	100%
Average Length of Stay	5.05	14.83	26.56	125.67	63.56

Notes: Less than one day of stay is calculated as one day.

¹Length of stay is calculated according to release date for those who are released.

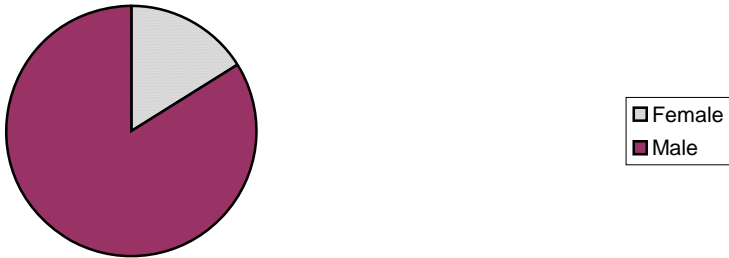
²For those still in custody, length of stay is calculated at the last day of the month.

Section III

Demographics

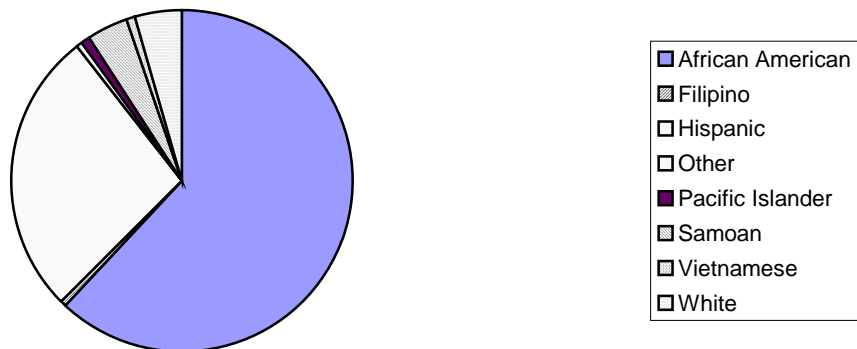
Gender	Frequency	Percent
Female	21	16.03%
Male	110	83.97%
Total	131	100.00%

**Demographic Characteristics
Of Juvenile Hall Detainees on 2/28/09 by Gender**



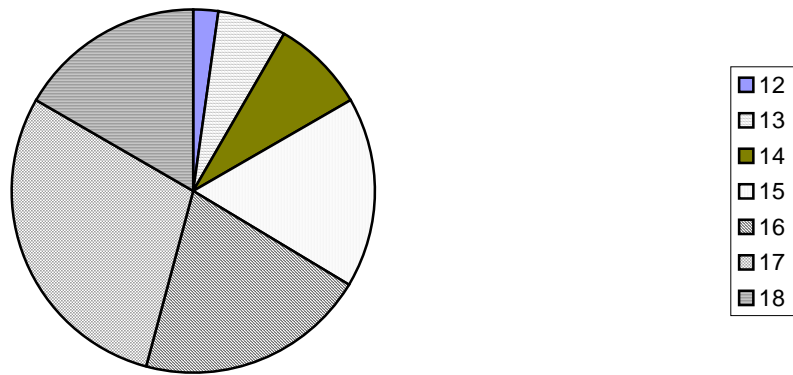
Race/Ethnic Origin	Frequency	Percent
African American	81	61.83%
Filipino	1	0.76%
Hispanic	35	26.72%
Other	1	0.76%
Pacific Islander	1	0.76%
Samoan	5	3.82%
Vietnamese	1	0.76%
White	6	4.58%
Total	131	100.00%

**Demographic Characteristics of Juvenile Hall Detainees on
2/28/09 by Race**



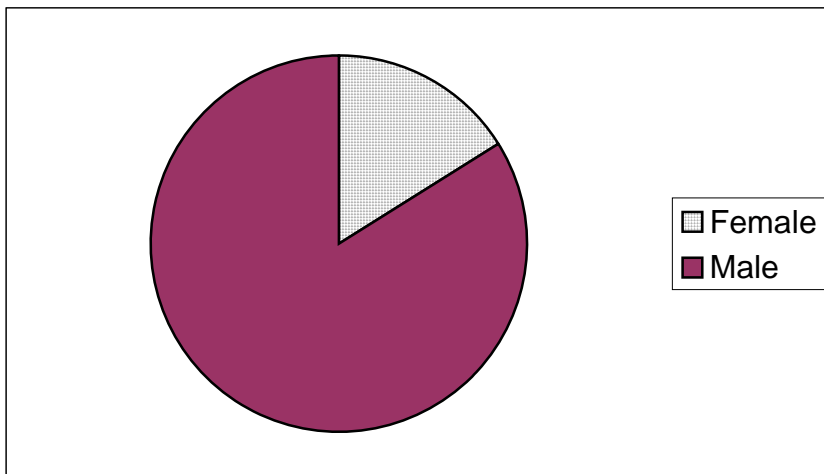
Age	Frequency	Percent
12	3	2.29%
13	8	6.11%
14	11	8.40%
15	22	16.79%
16	27	20.61%
17	38	29.01%
18	22	16.79%
Total	131	100.00%

**Demographic Characteristics of Juvenile Hall
Detainees on 2/28/09 by Age**



Demographic Characteristics of Juvenile Hall Detainees
on 2/28/2009
Age by Gender

Age	Female	Male	Total	
11	0	0	0	0.00%
12	1	2	3	2.29%
13	0	8	8	6.11%
14	3	8	11	8.40%
15	3	19	22	16.79%
16	4	23	27	20.61%
17	7	31	38	29.01%
18 and over	3	19	22	16.79%
Total	21	110	131	100.00%
	16.03%	83.97%	100.00%	



Demographic Characteristics
Of Juvenile Hall Detainees on February 28th, 2009

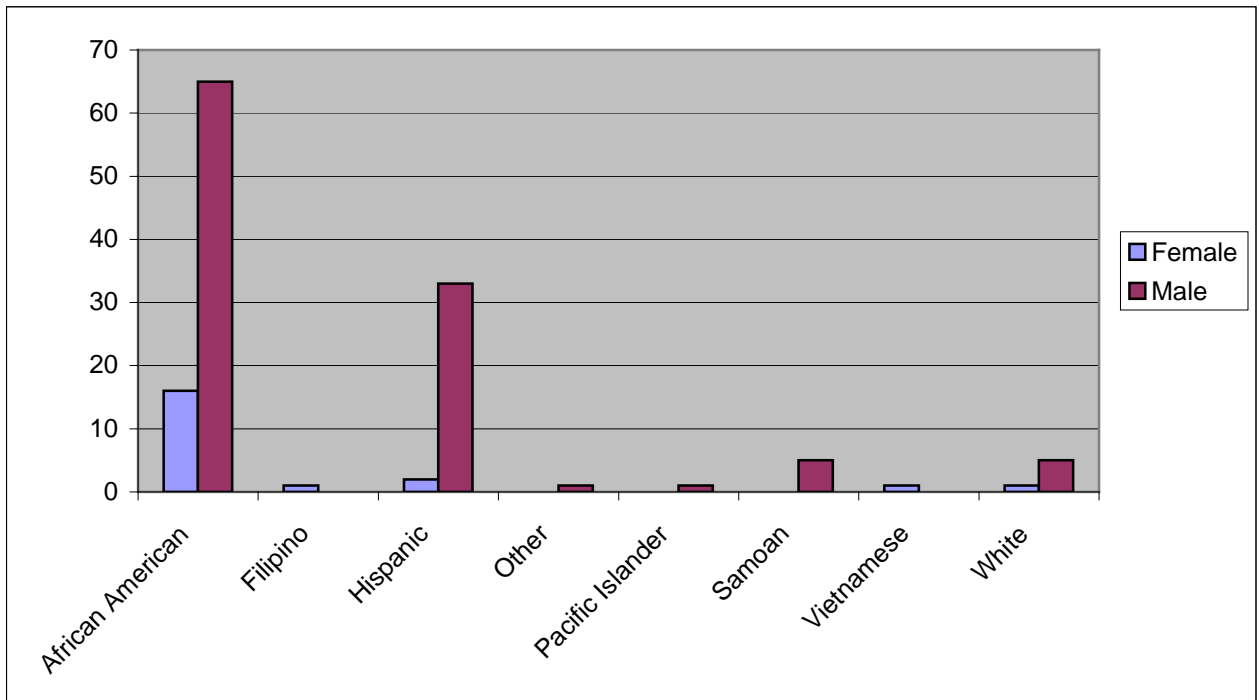
Geographic Residence of Youth	Count	%
Richmond	2	1.5%
Marina	2	1.5%
North of Market/Downtown	2	1.5%
Treasure Island/Yerba Buena Island	2	1.5%
Western Addition	15	11.5%
South of Market/Tenderloin	3	2.3%
Sunset	2	1.5%
Haight Ashbury/Castro/Upper Market	2	1.5%
Inner Mission	10	7.6%
Potrero	7	5.3%
Parkside	1	0.8%
Ingleside (West of Twin Peaks)	4	3.1%
Outer Mission	19	14.5%
Bayview	41	31.3%
Non-San Francisco and Unavailable	19	14.5%
Total	131	100.0%

Non-San Francisco and Unavailable	Count	%
Daly City	5	26.3%
East Palo Alto	1	5.3%
Fairfield	1	5.3%
Honduras	2	10.5%
Oakland	1	5.3%
Pine Bluff	1	5.3%
Richmond	1	5.3%
Sausalito	1	5.3%
South San Francisco	2	10.5%
Union City	1	5.3%
Unavailable	3	15.8%
Total	19	100.0%

Demographic Characteristics
Of Juvenile Hall Detainees on February 28th, 2009

Race/Ethnic Origin by Gender

Race/Ethnicity	Female	Male	Total	%
African American	16	65	81	61.8%
Filipino	1	0	1	0.8%
Hispanic	2	33	35	26.7%
Other	0	1	1	0.8%
Pacific Islander	0	1	1	0.8%
Samoan	0	5	5	3.8%
Vietnamese	1	0	1	0.8%
White	1	5	6	4.6%
Total	21	110	131	100.0%

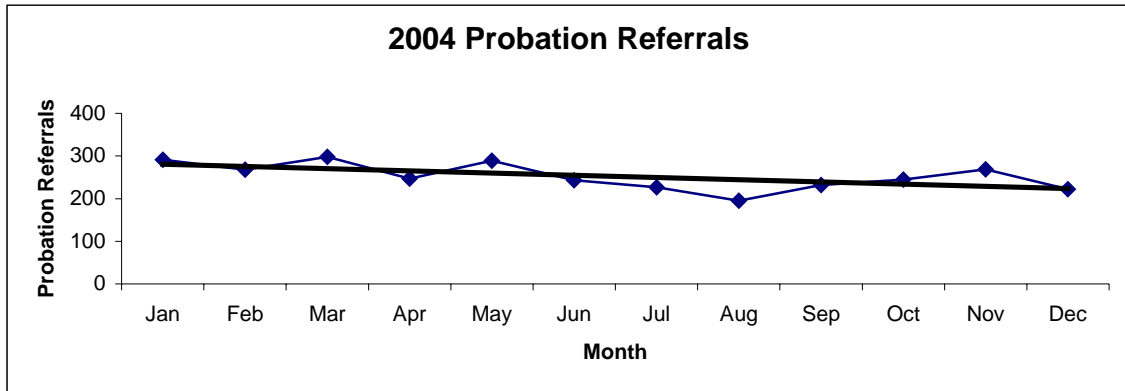


Section IV

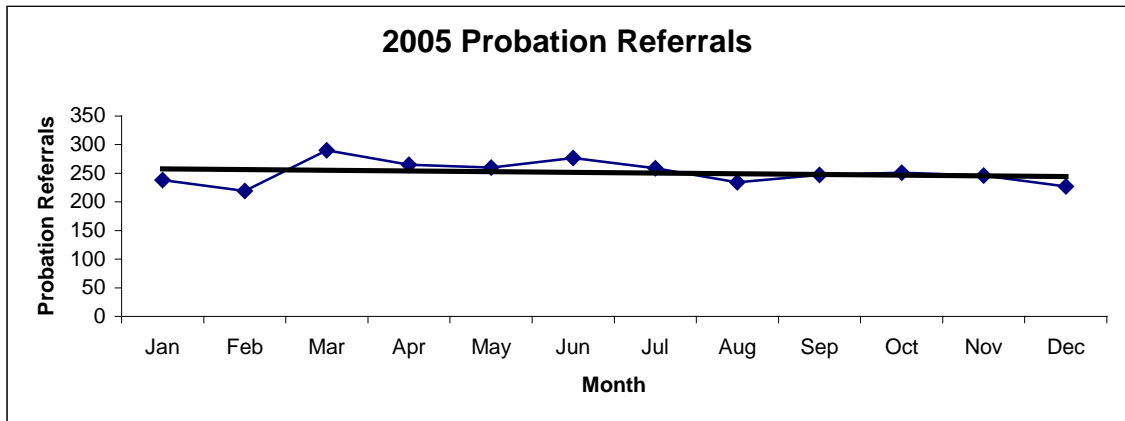
Historical Information

San Francisco Juvenile Probation Department
Probation Referrals (all sources) By Month
 (2004-2006)

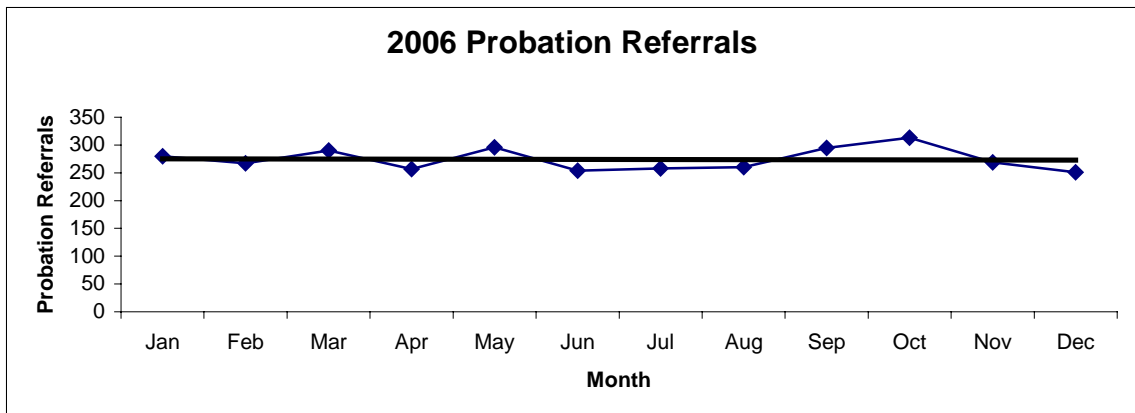
2004 Probation Referrals	Jan	Feb	Mar	Apr	May	Jun	Jul	Aug	Sep	Oct	Nov	Dec	Total
	291	268	298	247	289	243	227	195	232	245	269	222	3026



2005 Probation Referrals	Jan	Feb	Mar	Apr	May	Jun	Jul	Aug	Sep	Oct	Nov	Dec	Total
	238	219	290	265	260	277	259	234	247	251	246	227	3013

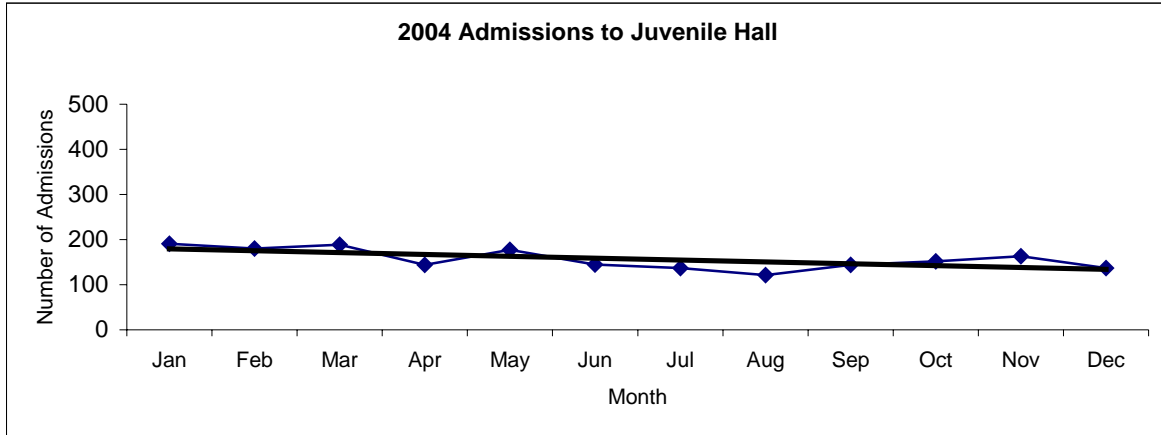


2006 Probation Referrals	Jan	Feb	Mar	Apr	May	Jun	Jul	Aug	Sep	Oct	Nov	Dec	Total
	280	267	290	257	296	254	258	260	295	313	269	251	3290

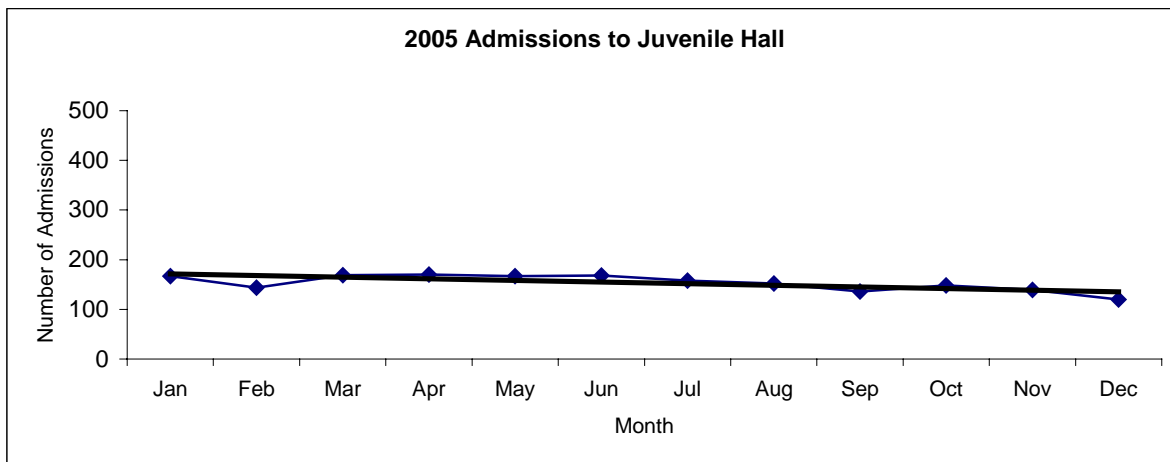


San Francisco Juvenile Probation
Juvenile Hall Admissions By Month
(2004-2006)

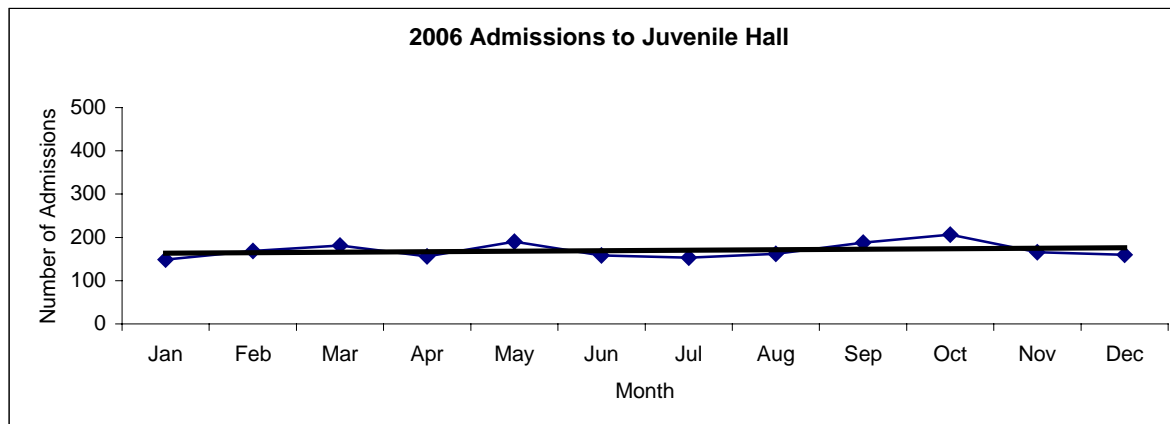
2004 Admissions	Jan	Feb	Mar	Apr	May	Jun	Jul	Aug	Sep	Oct	Nov	Dec	Total
	191	180	189	144	177	145	137	121	144	152	163	137	1880



2005 Admissions	Jan	Feb	Mar	Apr	May	Jun	Jul	Aug	Sep	Oct	Nov	Dec	Total
	167	144	169	170	167	168	158	152	136	148	139	120	1838

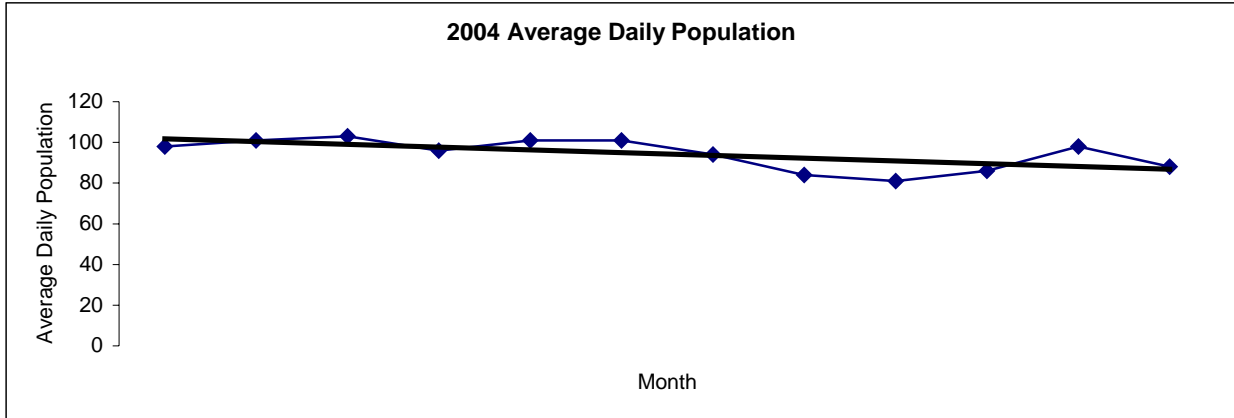


2006 Admissions	Jan	Feb	Mar	Apr	May	Jun	Jul	Aug	Sep	Oct	Nov	Dec	Total
	149	169	181	156	190	158	153	162	188	206	166	160	2038

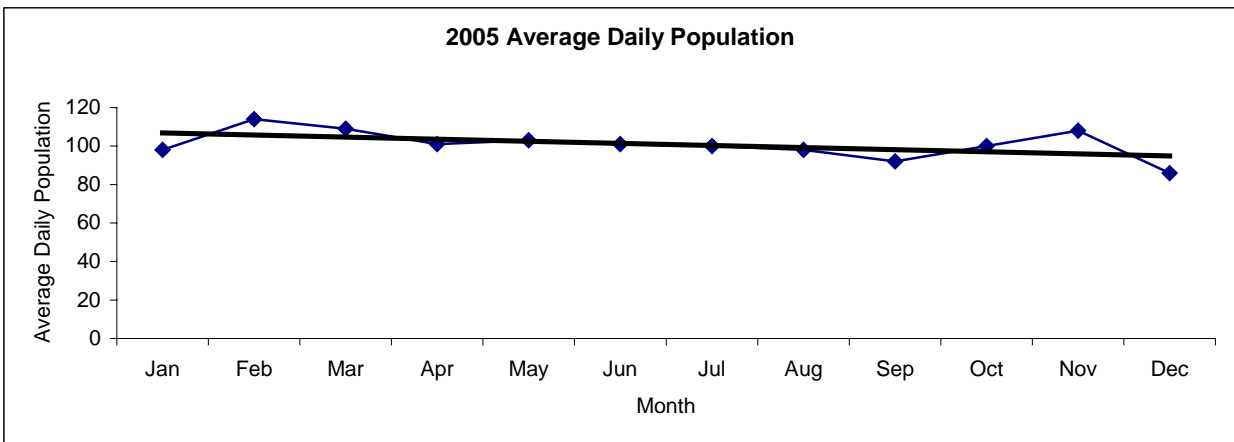


San Francisco Juvenile Probation
Juvenile Hall Average Daily Population By Month
 (2004-2006)

2004 Avg. Daily Pop.	Jan	Feb	Mar	Apr	May	Jun	Jul	Aug	Sep	Oct	Nov	Dec	Total
	98	101	103	96	101	101	94	84	81	86	98	88	94



2005 Avg. Daily Pop.	Jan	Feb	Mar	Apr	May	Jun	Jul	Aug	Sep	Oct	Nov	Dec	Total
	98	114	109	101	103	101	100	98	92	100	108	86	100



2006 Avg. Daily Pop.	Jan	Feb	Mar	Apr	May	Jun	Jul	Aug	Sep	Oct	Nov	Dec	Total
	81	90	100	99	111	112	107	104	104	128	122	119	106

