

City and County of San Francisco



Juvenile Probation Department

Monthly Report for May 2012

Presented to the Juvenile Probation Commission

June 12th, 2012

William P. Siffermann
Chief Probation Officer

Prepared by Jose Luis Perla
Information Technology Director
(415) 753-7686
jose.perla@sfgov.org

Table of Contents

Section I Summary Reports

Juvenile Hall, Log Cabin Ranch Summary Statistics	1
Probation Services Summary and California Youth Authority Statistics	2
Active Cases by Units	3

Section II Current Month General Detail

Probation Referrals, Juvenile Admissions And Average Daily Population	4
Juvenile Hall Admissions and Average Daily Population	5
Commitments to out-of-home placement	6
Commitments to California Youth Authority	7
Log Cabin Ranch Admissions and Average Daily Population	8
Probation Referrals	9
Juvenile Hall And Log Cabin Ranch Incident Report	10
Bay Area Resident Juvenile Hall Comparison	11
Juvenile Hall Admissions	12
Juvenile Hall Detainees by Detention Reason	13
Juvenile Hall Average Daily Population by Rated Capacity	14
Juvenile Hall Average Length of Stay	15

Section III Demographics

Juvenile Hall Detainees by Sex and Race/Ethnic Origin	16
Juvenile Hall Detainees by Age	17
Juvenile Hall Detainees by Age and Sex	18
Juvenile Hall Detainees by Geographic Residence of Youth	19
Juvenile Hall Detainees by Race/Ethnic Origin and Sex	20

Section IV

Historical Information

2004-2006 Probation Referrals	21
2004-2006 Juvenile Hall Admissions	22
2004-2006 Juvenile Hall Average Daily Population	23

Section I

Summary Reports

Summary Report for the Month of May 2012

Juvenile Hall	<i>April 2011</i>	<i>April 2012</i>	<i>May 2011</i>	<i>May 2012</i>	<i>YTD 2011</i>	<i>YTD 2012</i>
Admissions	100	86	118	77	516	385
Average Daily Population	84	70	91	63	89	71
Average Length of Stay (Releases)	16.25	25.38	25.85	24.04	26.03	26.71
Average Length of Stay (In Custody)	60.74	67.86	55.68	68.23	53.85	70.18
Releases	92	89	109	78	508	393
Log Cabin Ranch						
Admissions:						
First Time Commitments	0	2	4	0	8	11
Recommitments	0	0	0	0	0	0
<i>Total</i>	0	2	4	0	8	11
Releases:						
Graduated	3	0	0	0	7	1
Escape	0	1	0	0	0	1
Other releases*	0	1	3	3	3	12
<i>Total</i>	3	2	3	3	10	14
Average Daily Population	22	18	21	16	22	17

*LCR Furlough in 2012

Summary Report for the Month of May 2012

Probation Services	<i>April 2012</i>	<i>May 2012</i>	<i>Year To Date 2012</i>
Probation Referrals	150	158	763
Total Petitions including violation of probation	73	78	341
Selected Court Dispositions:			
California Youth Authority	0	1	1
Log Cabin Ranch	3	0	12
Out of Home Placement	7	4	38
Ward Probation	14	16	76
Non-Ward Probation (725a WI)	2	1	15
Informal Probation (654 WI)	9	8	53
Violation of Probation Petitions Filed	9	15	51
California Youth Authority Monthly Count San Francisco County Juvenile Court Cases May 31 st , 2012			
Category	Institutions	Parole	
Males			
White	0	1	
Hispanic	0	0	
African American	6	1	
Asian	0	0	
Native American	0	0	
Filipino	0	0	
Pacific Islander	0	0	
Other	0	0	
Total	6	2	
Females			
White	0	0	
Hispanic	0	0	
African American	0	0	
Asian	0	0	
Native American	0	0	
Filipino	0	0	
Pacific Islander	0	0	
Other	0	0	
Total	0	0	
Grand Total	6	2	

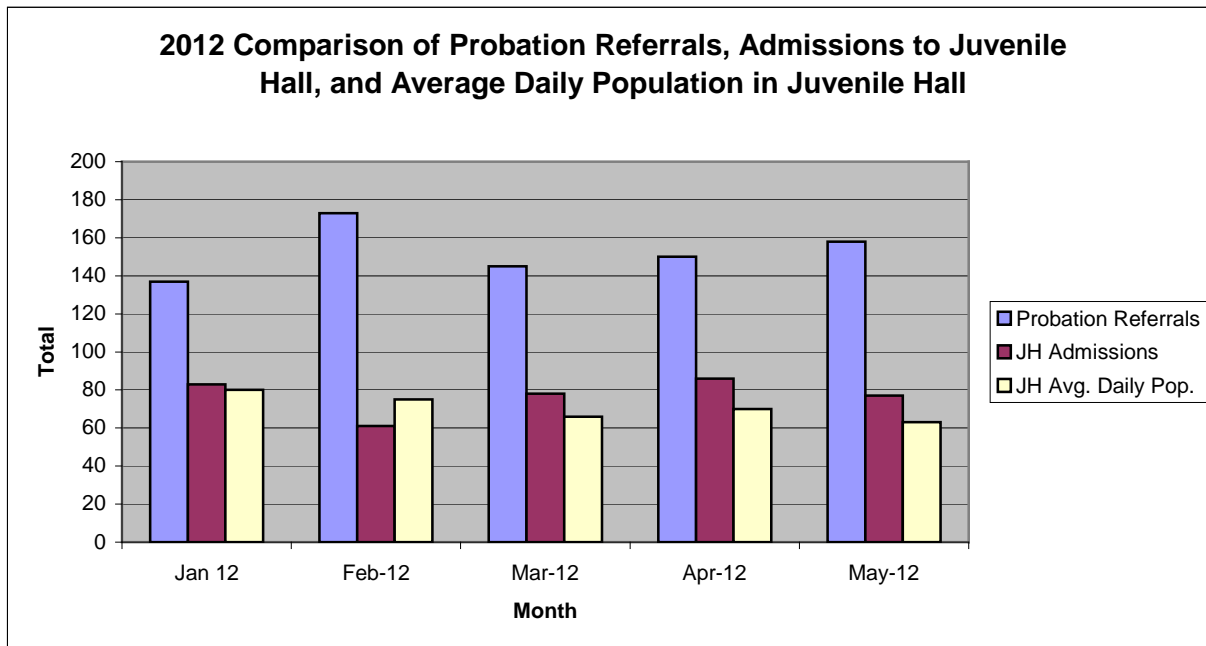
Summary Report for the Month of May 2012

Probation Services			
Active Cases by Units	April 2012	May 2012	May Average # Youth by PO
CARC	201	231	231
Intake Green (Custody Screening Investigation)	103	107	13
Intake Gold (Probation Services 1)	167	154	22
Family Integrated Treatment Services (FITS) PS2	186	174	17
Serious Offenders Program (Probation Services 3)	190	183	18
Out-of-home Placement (Probation Services 4)	175	182	22
Special Services	3	3	3
<i>Total</i>	1,025	1,034	46
Total Active Intake Cases	479	511	
Total Probation/Supervision Cases	546	523	

Section II
Current Month
General Detail

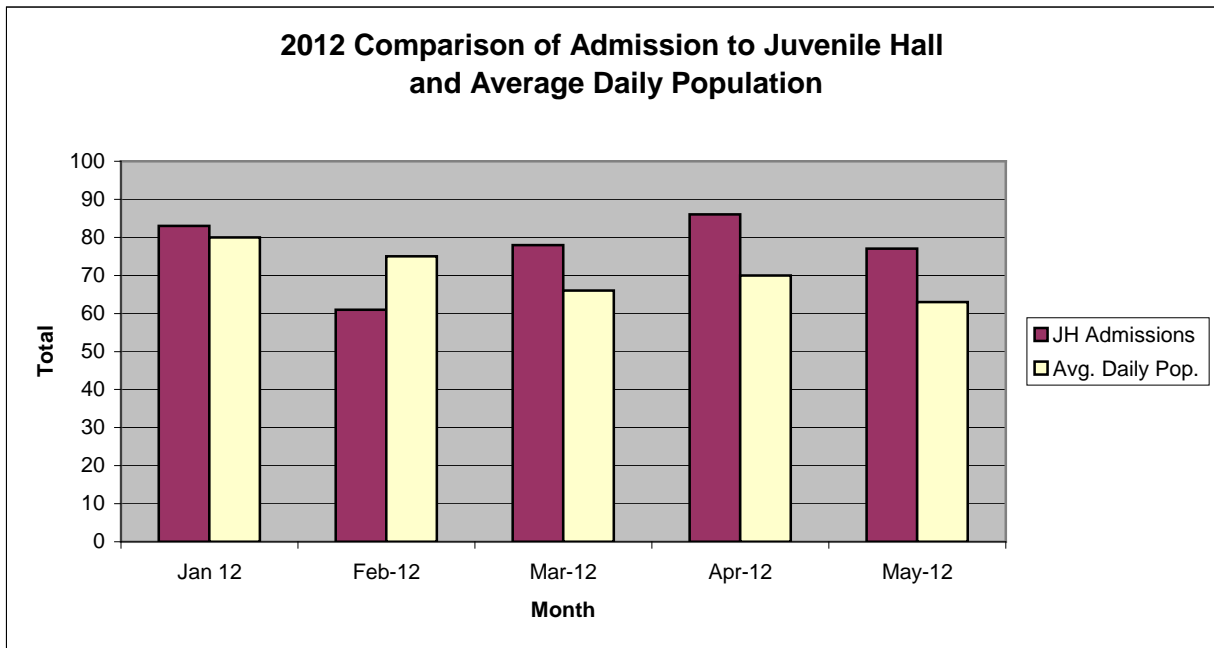
San Francisco Juvenile Probation Department

	Jan 12	Feb-12	Mar-12	Apr-12	May-12	Jun-12	Jul-12	Aug-12	Sep-12	Oct-12	Nov-12	Dec-12
Probation Referrals	137	173	145	150	158							
JH Admissions	83	61	78	86	77							
JH Avg. Daily Pop.	80	75	66	70	63							



San Francisco Juvenile Probation Department

	Jan 12	Feb-12	Mar-12	Apr-12	May-12	Jun-12	Jul-12	Aug-12	Sep-12	Oct-12	Nov-12	Dec-12
JH Admissions	83	61	78	86	77							
Avg. Daily Pop.	80	75	66	70	63							

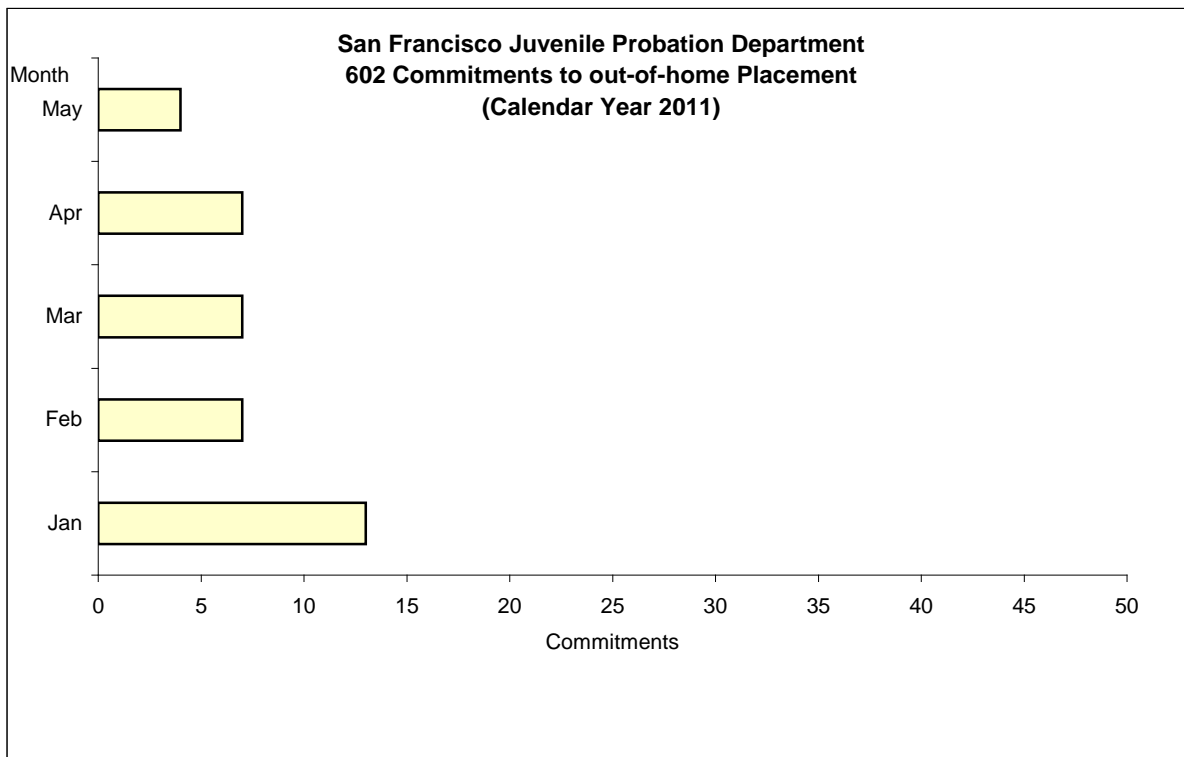


Out-of-Home Placement¹

Commitments of 602's

Calendar Year 2012

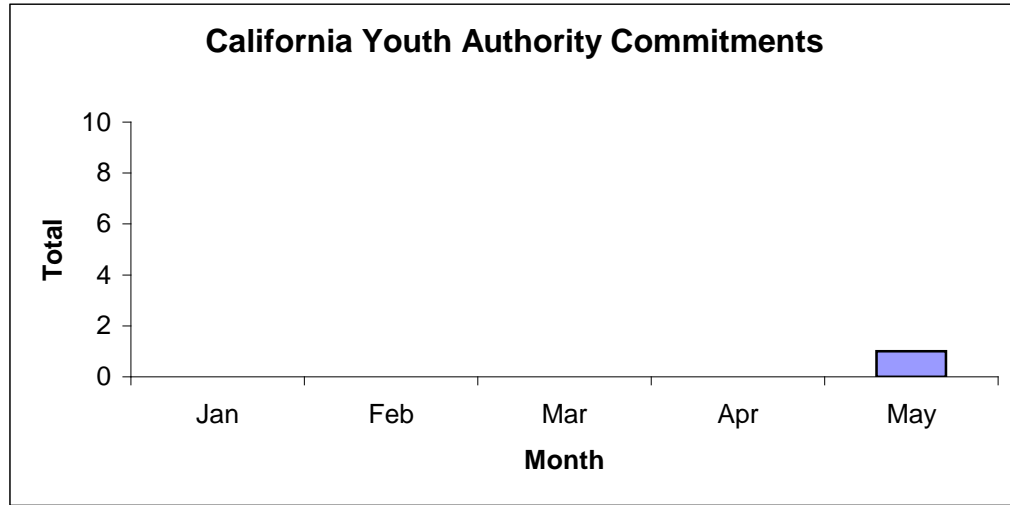
Commitments	Jan	Feb	Mar	Apr	May	Jun	Jul	Aug	Sep	Oct	Nov	Dec	Total
2012	13	7	7	7	4								38



¹ This report is based on 602 Commitments to out-of-home placements. If there is a 601 commitment, it will show as a footnote here. Figures are regularly updated to include reports from previous reporting periods.

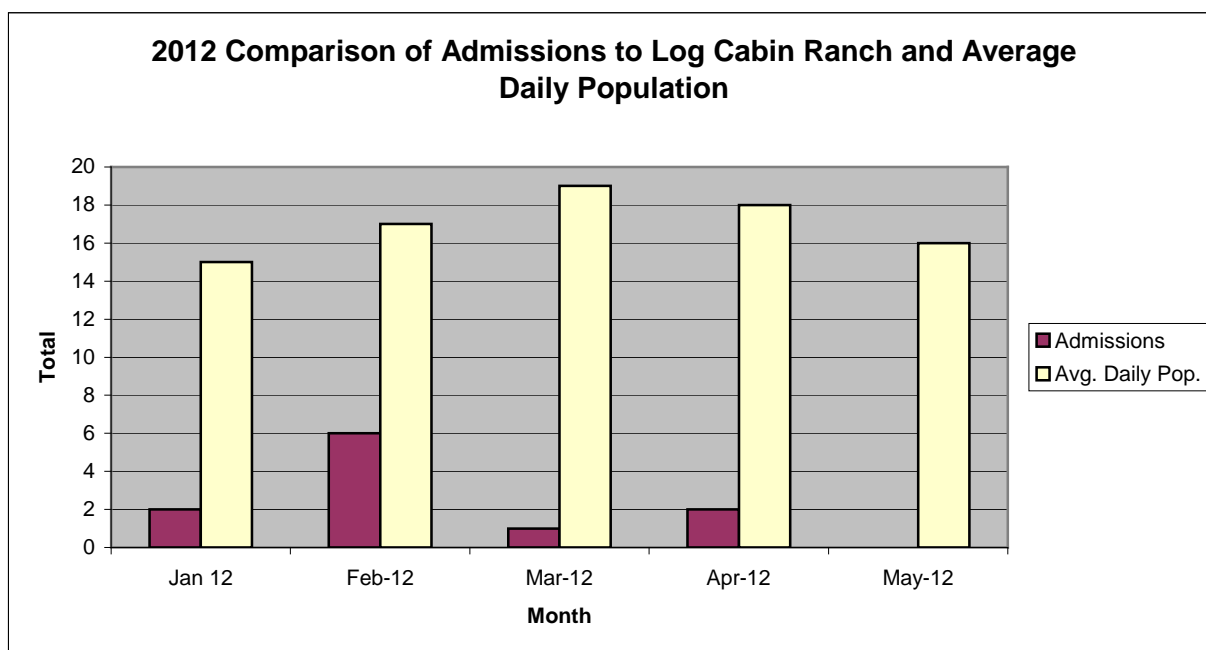
California Youth Authority Commitments (Calendar Year 2012)

Commitments	Jan	Feb	Mar	Apr	May	Jun	Jul	Aug	Sep	Oct	Nov	Dec	Total
2012	0	0	0	0	1								1



San Francisco Juvenile Probation Department

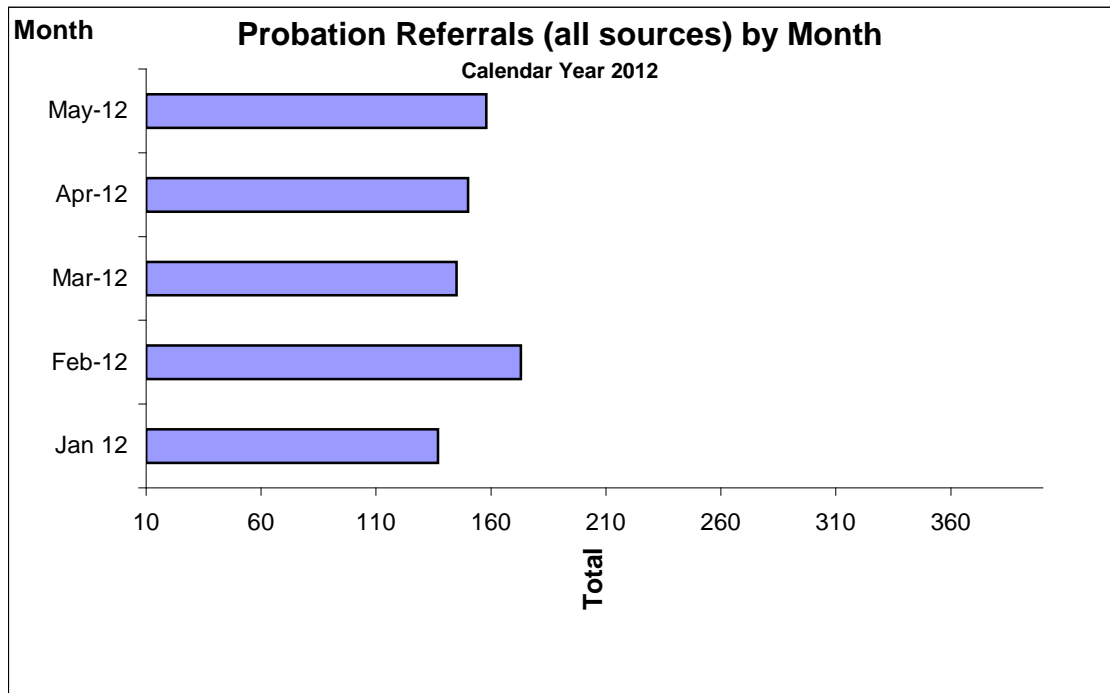
	Jan 12	Feb-12	Mar-12	Apr-12	May-12	Jun-12	Jul-12	Aug-12	Sep-12	Oct-12	Nov-12	Dec-12
Admissions	2	6	1	2	0							
Avg. Daily Pop.	15	17	19	18	16							



Probation Referrals by Month Calendar Year 2012

Probation Referrals (all sources) by Month (602 W&I)

Jan 12	137
Feb-12	173
Mar-12	145
Apr-12	150
May-12	158
Jun-12	
Jul-12	
Aug-12	
Sep-12	
Oct-12	
Nov-12	
Dec-12	

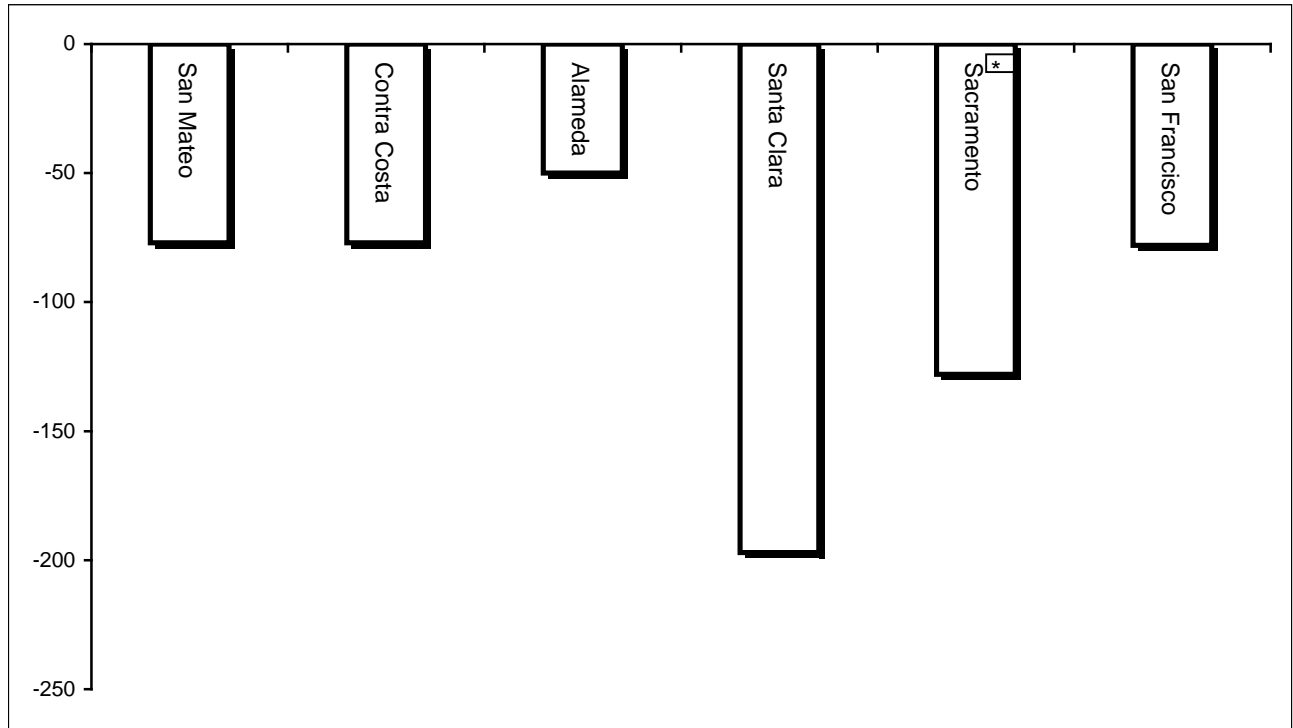


San Francisco Juvenile Probation Department
Monthly Incident Report Form
May 2012

Juvenile Hall	Assault on Staff	Fight	Attempted Escape	Fire	Attempted Suicide	Serious Contraband (Weapon illegal drug)	Use of Restraints	Self-Inflicted Injury	Assault on Staff with Injury	Fight with Injury
	0	3	1	0	0	5	0	0	0	0
	Escape	Death	Suicide	Property Damage	Use of Force					
	0	0	0	0	0					
Log Cabin Ranch	Battery on Staff	Injury to Staff due to Restraint of Minor	Fight	Battery Youth on Youth	Attempted Escape	AWOL	Attempted Suicide	Serious Contraband	Battery on Staff with Injury	Fire
	0	0	0	0	0	0	0	0	0	0
	Fight With Injury	Battery Youth on Youth with Injury	Escape	Death	Suicide	Major Property Destruction				
	0	0	0	0	0	0				

Bay Area Resident Juvenile Hall Comparison Over/Under Capacity

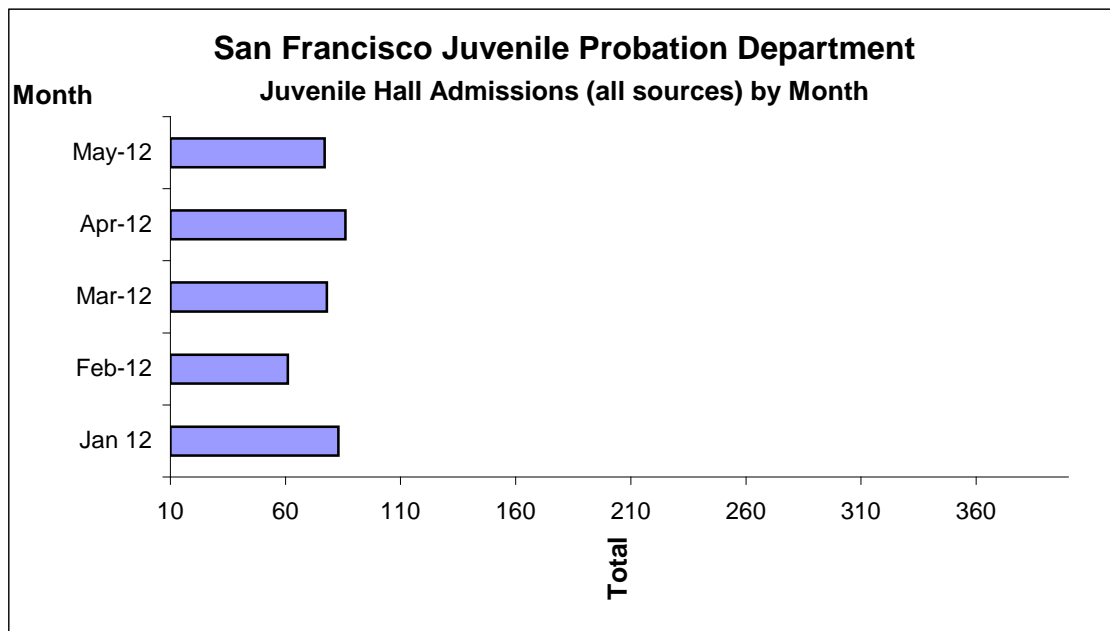
June 1st, 2012



	Rated Capacity	Actual	Over/Under Capacity
San Mateo	180	103	-77
Contra Costa	240	163	-77
Alameda	280	230	-50
Santa Clara	360	163	-197
Sacramento	308	180	-128
San Francisco	150	72	-78

Juvenile Hall Admissions by Month Calendar Year 2012

Jan 12	83
Feb-12	61
Mar-12	78
Apr-12	86
May-12	77
Jun-12	
Jul-12	
Aug-12	
Sep-12	
Oct-12	
Nov-12	
Dec-12	



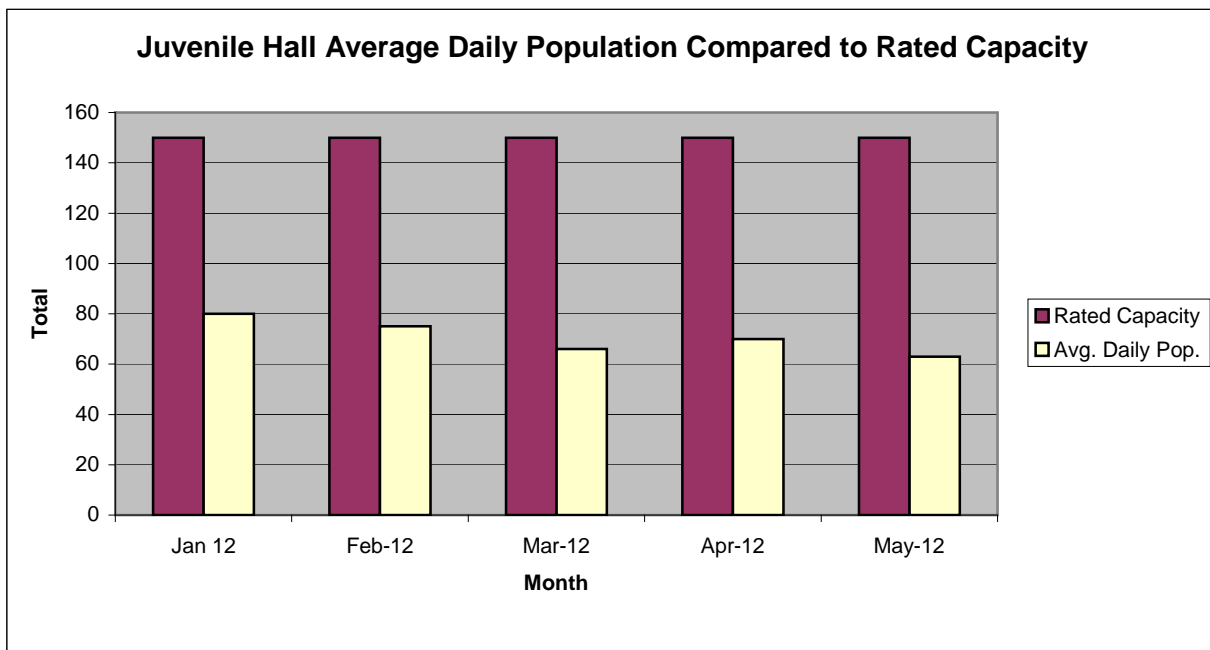
Characteristics of Juvenile Hall Detainees on April 30th, 2012

Detention Reason	Offense Code	MF*	Count	%
MURDER	187 (A) PC	F	2	2.86%
LEWD OR LASCIVIOUS ACTS W/CHILD UNDER 14 YEARS	288 (A) PC	F	2	2.86%
SHOOT AT INHABITED DWELLING/VEHICLE/ETC	246 PC	F	1	1.43%
ROBBERY	211 PC	F	21	30.00%
BURGLARY	459 PC	F	3	4.29%
ASSAULT WITH FIREARM ON PERSON	245 (A)(2) PC	F	1	1.43%
ASSAULT:DEADLY WEAPON OR FORCE:POSSIBLE GREAT BODILY INJ	245 (A) PC	F	1	1.43%
FORCE OR ADW NOT FIREARM:GBI LIKELY	245 (A)(1) PC	F	6	8.57%
CARRY CONCEALED STOLEN WEAPON	25400 (C)(2) PC	F	1	1.43%
CARRY CONCEALED WEAPON IN VEHICLE W/PRIOR FELONY CONVICTION	12025 (A)(1) PC	F	1	1.43%
CARRY CONCEALED WEAPON PROHIBITED CLASS/UNLAWFUL POSSESSION	25400 (C)(4) PC	F	1	1.43%
BATTERY ON SCHOOL EMPLOYEE W/INJURY	243.6 PC	F	1	1.43%
THREATEN CRIME W/INTENT TO TERRORIZE	422 PC	F	1	1.43%
CONVICTED PERSON POSSESS/ETC FIREARM:UNDER 30 YEARS OF AGE	29820 PC	F	1	1.43%
CARRY CONCEALED WEAPON ON PERSON	25400 (A)(2) PC	F	1	1.43%
EVADE PEACE OFFICER WITH WANTON DISREGARD FOR SAFETY	2800.2(A) VC	F	1	1.43%
VANDALISM (\$400 OR MORE)	594 (B)(1) PC	F	1	1.43%
BURGLARY:SECOND DEGREE	460 (B) PC	M	1	1.43%
FALSE IDENTIFICATION TO SPECIFIC PEACE OFFICERS	148.9(A) PC	M	1	1.43%
FAIL TO OBEY ORDER OF JUVENILE COURT:602 WI	777 (A)(2) WI	M	2	2.86%
CHANGE OF PLACEMENT/PLACEMENT FAILURE	737 WI	M	6	8.57%
VIOLATION(S) OF HOME SUPERVISION CONDITION	628.1 WI	M	1	1.43%
BENCH WARRANT	BENCH WARRANT		4	5.71%
ARREST WARRANT	WRNT602		6	8.57%
COURT ORDER	CTORD 602		3	4.29%
		Total	70	100.00%

*M=Misdemeanor; F=Felony

San Francisco Juvenile Probation Department

	Jan 12	Feb-12	Mar-12	Apr-12	May-12	Jun-12	Jul-12	Aug-12	Sep-12	Oct-12	Nov-12	Dec-12
Rated Capacity	150	150	150	150	150							
Avg. Daily Pop.	80	75	66	70	63							



Juvenile Hall Average Length of Stay

For the Month of May 2012

¹Released

Range of Days	<i>1-10 days</i>	<i>11-20 days</i>	<i>21-30 days</i>	<i>30 or more days</i>	Total
# of Youth Released	41	18	5	14	78
% of Population	52.56%	23.08%	6.41%	17.95%	100%
# of Days	204	285	126	1,260	1875
% of Total Days	10.88%	15.20%	6.72%	67.20%	100%
Average Length of Stay	4.98	15.83	25.20	90.00	24.04

²In Custody

Range of Days	<i>1-10 days</i>	<i>11-20 days</i>	<i>21-30 days</i>	<i>30 or more days</i>	Total
# of Youth Detained	24	12	6	28	70
% of Population	34.29%	17.14%	8.57%	40.00%	100%
# of Days	96	188	158	4,334	4776
% of Total Days	2.01%	3.94%	3.31%	90.75%	100%
Average Length of Stay	4.00	15.67	26.33	154.79	68.23

Notes: Less than one day of stay is calculated as one day.

¹Length of stay is calculated according to release date for those who are released.

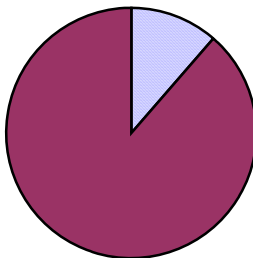
²For those still in custody, length of stay is calculated at the last day of the month.

Section III

Demographics

Gender	Frequency	Percent
Female	8	11.43%
Male	62	88.57%
Total	70	100.00%

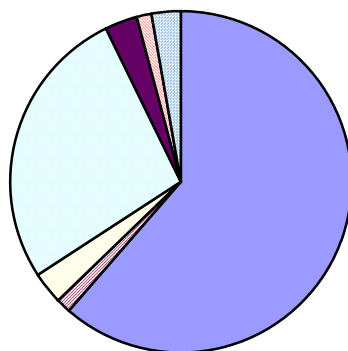
**Demographic Characteristics
Of Juvenile Hall Detainees on 5/31/12 by Gender**



Female
Male

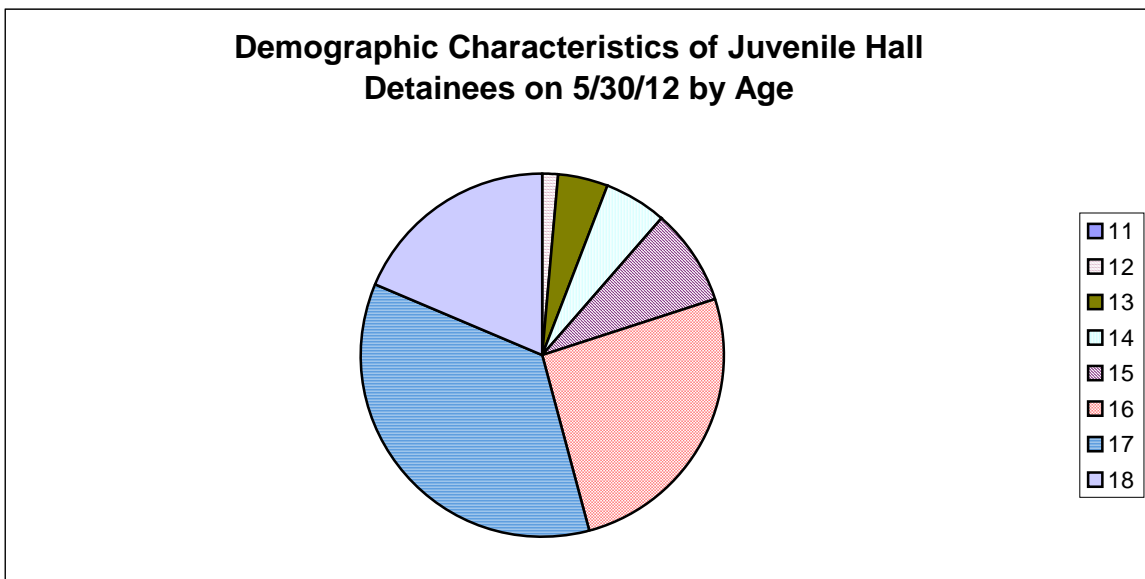
Race/Ethnic Origin	Frequency	Percent
African American	43	61.43%
Chinese	1	1.43%
Filipino	2	2.86%
Hispanic	19	27.14%
Other	2	2.86%
Other Asian	1	1.43%
White	2	2.86%
Total	70	100.00%

**Demographic Characteristics of Juvenile Hall Detainees on
5/31/12 by Race**



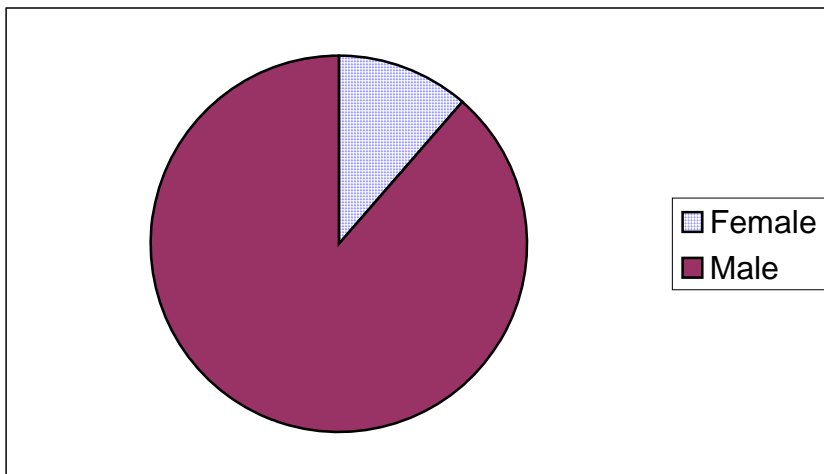
African American
Chinese
Filipino
Hispanic
Other
Other Asian
White

Age	Frequency	Percent
11	0	0.00%
12	1	1.43%
13	3	4.29%
14	4	5.71%
15	6	8.57%
16	18	25.71%
17	25	35.71%
18	13	18.57%
Total	70	100.00%



Demographic Characteristics of Juvenile Hall Detainees
on 5/31/2012
Age by Gender

Age	Female	Male	Total	
11	0	0	0	0.00%
12	1	0	1	1.43%
13	1	2	3	4.29%
14	0	4	4	5.71%
15	0	6	6	8.57%
16	3	15	18	25.71%
17	2	23	25	35.71%
18 and over	1	12	13	18.57%
Total	8	62	70	100.00%
	11.43%	88.57%	100.00%	



Demographic Characteristics
Of Juvenile Hall Detainees on May 31st, 2012

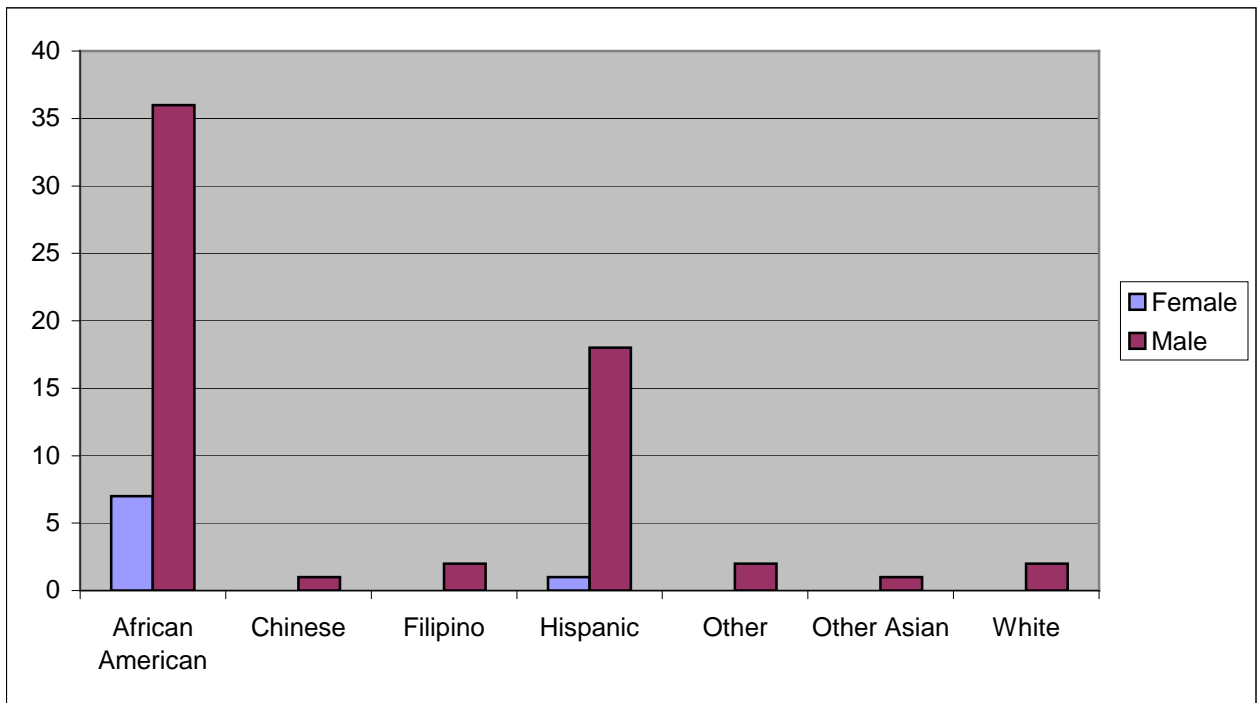
Geographic Residence of Youth	Count	%
Richmond	4	5.7%
Marina	0	0.0%
North of Market/Downtown	2	2.9%
Treasure Island/Yerba Buena Island	2	2.9%
Western Addition	1	1.4%
South of Market/Tenderloin	4	5.7%
Sunset	2	2.9%
Haight Ashbury/Castro/Upper Market	0	0.0%
Inner Mission	3	4.3%
Potrero	1	1.4%
Parkside	0	0.0%
Ingleside (West of Twin Peaks)	6	8.6%
Outer Mission	15	21.4%
Bayview	16	22.9%
Non-San Francisco and Unavailable	14	20.0%
Total	70	100.0%

Non-San Francisco and Unavailable	Count	%
Daly City	1	7.1%
Honduras	2	14.3%
Oakland	5	35.7%
Richmond	1	7.1%
Sacramento	1	7.1%
Vallejo	1	7.1%
Unavailable	3	21.4%
Total	14	100.0%

Demographic Characteristics
Of Juvenile Hall Detainees on May 31st, 2012

Race/Ethnic Origin by Gender

Race/Ethnicity	Female	Male	Total	%
African American	7	36	43	61.4%
Chinese	0	1	1	1.4%
Filipino	0	2	2	2.9%
Hispanic	1	18	19	27.1%
Other	0	2	2	2.9%
Other Asian	0	1	1	1.4%
White	0	2	2	2.9%
Total	8	62	70	100.0%

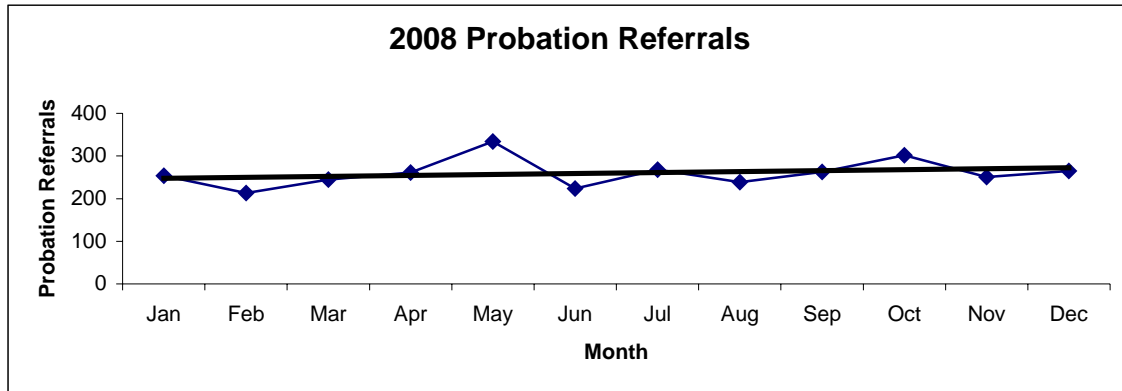


Section IV

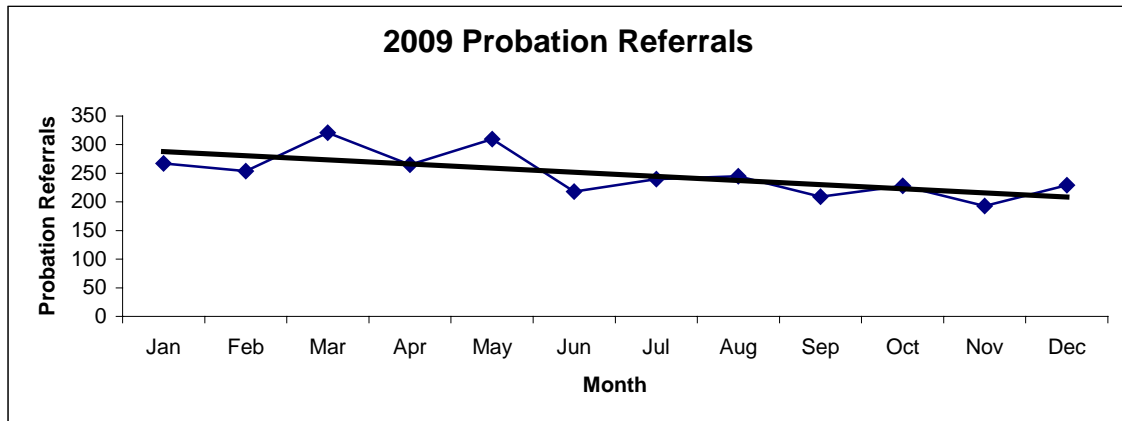
Historical Information

San Francisco Juvenile Probation Department
Probation Referrals (all sources) By Month
 (2008-2010)

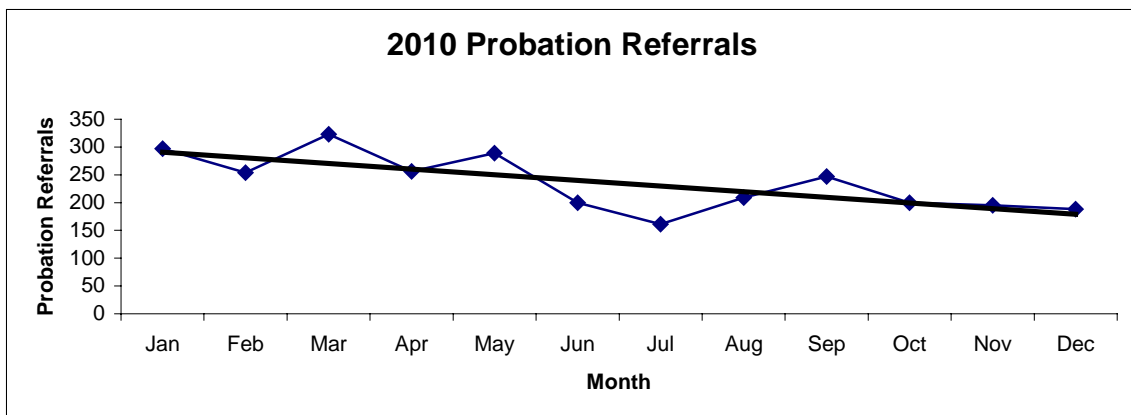
2008 Probation Referrals	Jan	Feb	Mar	Apr	May	Jun	Jul	Aug	Sep	Oct	Nov	Dec	Total
	254	213	245	261	334	224	268	239	263	302	251	265	3119



2009 Probation Referrals	Jan	Feb	Mar	Apr	May	Jun	Jul	Aug	Sep	Oct	Nov	Dec	Total
	267	254	321	265	310	218	240	245	209	228	193	229	2979

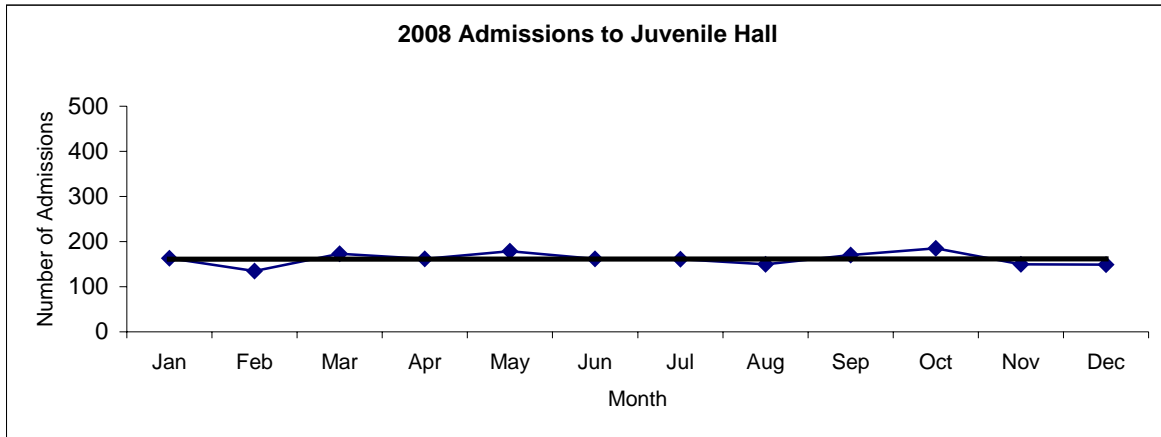


2010 Probation Referrals	Jan	Feb	Mar	Apr	May	Jun	Jul	Aug	Sep	Oct	Nov	Dec	Total
	297	254	323	256	289	200	161	209	247	200	195	188	2819

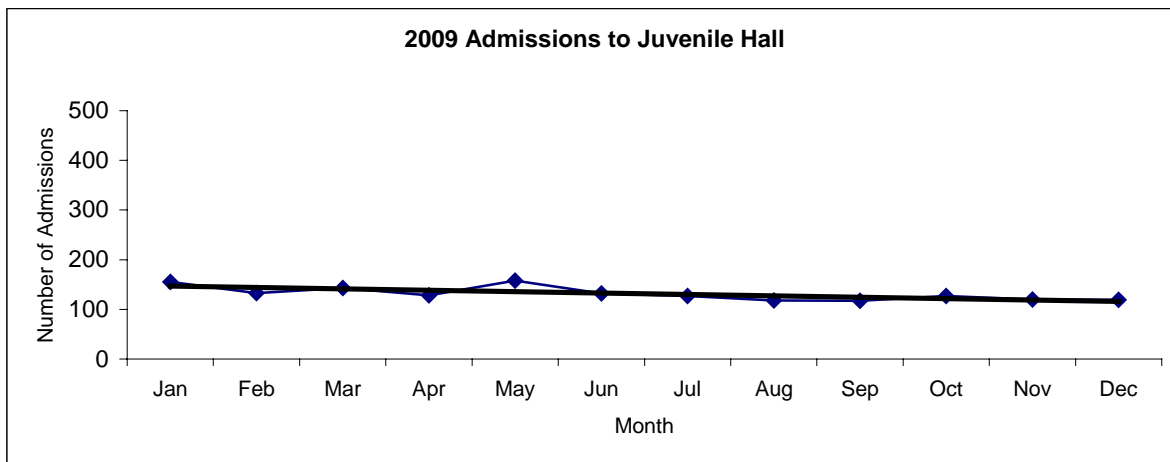


San Francisco Juvenile Probation
Juvenile Hall Admissions By Month
(2008-2010)

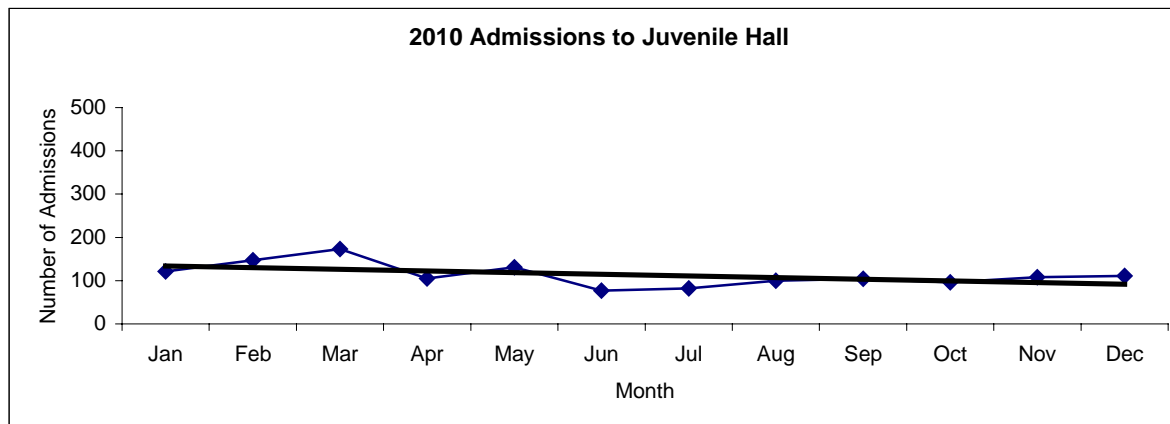
2008 Admissions	Jan	Feb	Mar	Apr	May	Jun	Jul	Aug	Sep	Oct	Nov	Dec	Total
	163	135	173	162	179	162	161	150	170	185	150	149	1939



2009 Admissions	Jan	Feb	Mar	Apr	May	Jun	Jul	Aug	Sep	Oct	Nov	Dec	Total
	155	133	143	128	158	132	127	118	117	127	120	119	1577

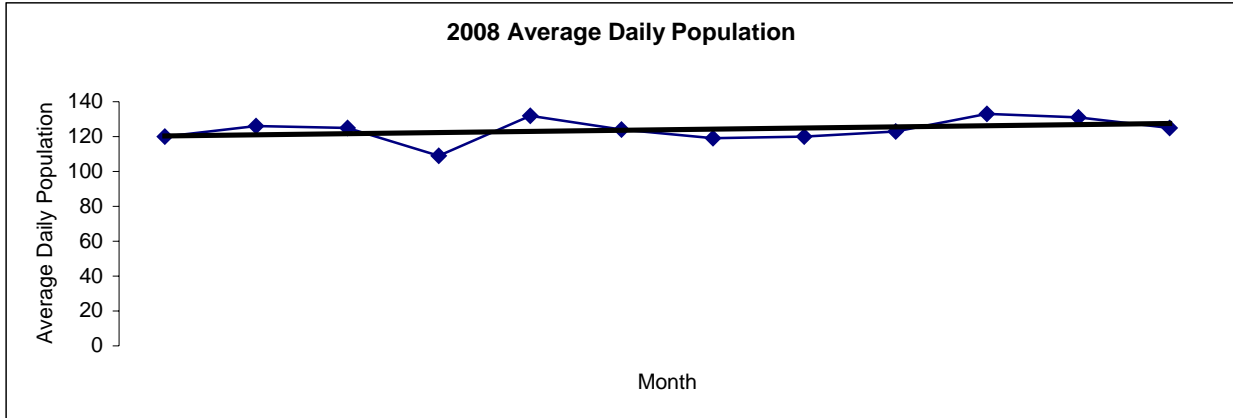


2010 Admissions	Jan	Feb	Mar	Apr	May	Jun	Jul	Aug	Sep	Oct	Nov	Dec	Total
	121	147	173	105	131	77	82	100	104	96	108	111	1355

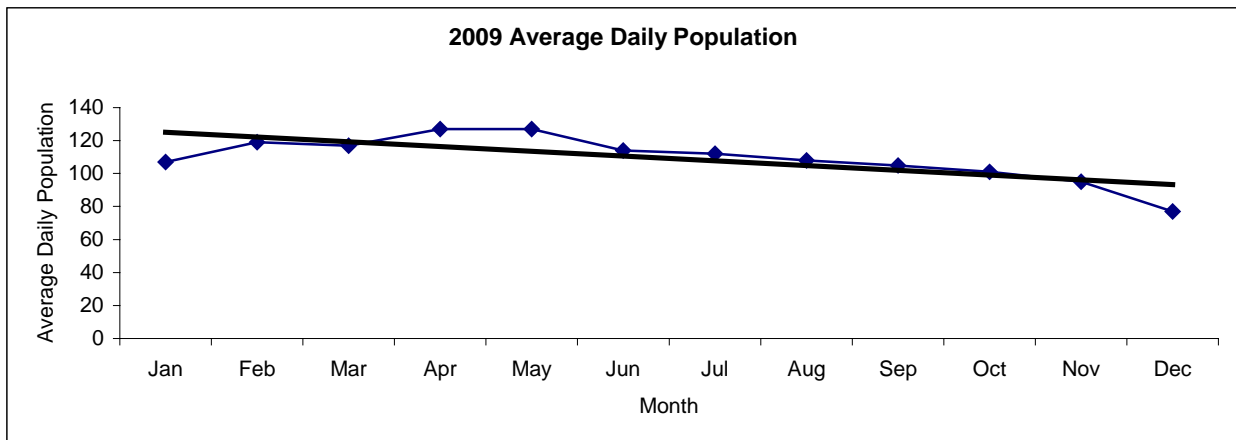


San Francisco Juvenile Probation
Juvenile Hall Average Daily Population By Month
 (2008-2010)

2008 Avg. Daily Pop.	Jan	Feb	Mar	Apr	May	Jun	Jul	Aug	Sep	Oct	Nov	Dec	Total
	120	126	125	109	132	124	119	120	123	133	131	125	124



2009 Avg. Daily Pop.	Jan	Feb	Mar	Apr	May	Jun	Jul	Aug	Sep	Oct	Nov	Dec	Total
	107	119	117	127	127	114	112	108	105	101	95	77	109



2010 Avg. Daily Pop.	Jan	Feb	Mar	Apr	May	Jun	Jul	Aug	Sep	Oct	Nov	Dec	Total
	85	104	110	107	99	97	90	88	90	84	79	92	94

