

City and County of San Francisco



Juvenile Probation Department

Monthly Report for September 2012

Presented to the Juvenile Probation Commission

October 9th, 2012

William P. Siffermann
Chief Probation Officer

Prepared by Jose Luis Perla
Information Technology Director
(415) 753-7686
jose.perla@sfgov.org

Table of Contents

Section I Summary Reports

Juvenile Hall, Log Cabin Ranch Summary Statistics	1
Probation Services Summary and California Youth Authority Statistics	2
Active Cases by Units	3

Section II Current Month General Detail

Probation Referrals, Juvenile Admissions And Average Daily Population	4
Juvenile Hall Admissions and Average Daily Population	5
Commitments to out-of-home placement	6
Commitments to California Youth Authority	7
Log Cabin Ranch Admissions and Average Daily Population	8
Probation Referrals	9
Juvenile Hall And Log Cabin Ranch Incident Report	10
Bay Area Resident Juvenile Hall Comparison	11
Juvenile Hall Admissions	12
Juvenile Hall Detainees by Detention Reason	13
Juvenile Hall Average Daily Population by Rated Capacity	14
Juvenile Hall Average Length of Stay	15

Section III Demographics

Juvenile Hall Detainees by Sex and Race/Ethnic Origin	16
Juvenile Hall Detainees by Age	17
Juvenile Hall Detainees by Age and Sex	18
Juvenile Hall Detainees by Geographic Residence of Youth	19
Juvenile Hall Detainees by Race/Ethnic Origin and Sex	20

Section IV

Historical Information

2004-2006 Probation Referrals	21
2004-2006 Juvenile Hall Admissions	22
2004-2006 Juvenile Hall Average Daily Population	23

Section I

Summary Reports

Summary Report for the Month of September 2012

Juvenile Hall	<i>August 2011</i>	<i>August 2012</i>	<i>September 2011</i>	<i>September 2012</i>	<i>YTD 2011</i>	<i>YTD 2012</i>
Admissions	95	75	109	63	908	686
Average Daily Population	82	74	95	72	88	74
Average Length of Stay (Releases)	19.83	31	57.85	27.79	30.37	28.25
Average Length of Stay (In Custody)	55.9	57.47	46.5	63.08	52.85	67.78
Releases	105	75	92	62	894	691
Log Cabin Ranch						
Admissions:						
First Time Commitments	4	3	1	0	18	25
Recommitments	0	0	1	0	1	0
<i>Total</i>	4	3	2	0	19	25
Releases:						
Graduated	6	0	1	0	15	1
Escape	0	0	0	0	0	1
Other releases*	0	8	3	2	14	26
<i>Total</i>	6	8	4	2	29	28
Average Daily Population	20	23	17	23	21	18

*LCR Furlough in 2012

Summary Report for the Month of September 2012

Probation Services	August 2012	September 2012	Year To Date 2012
Probation Referrals	149	151	1344
Total Petitions including violation of probation	75	48	586
Selected Court Dispositions:			
California Youth Authority	0	0	3
Log Cabin Ranch	2	1	28
Out of Home Placement	11	5	71
Ward Probation	19	17	151
Non-Ward Probation (725a WI)	6	1	28
Informal Probation (654 WI)	6	8	84
Violation of Probation Petitions Filed	14	14	102
California Youth Authority Monthly Count San Francisco County Juvenile Court Cases September 30 th , 2012			
Category	Institutions	Parole	
Males			
White	0	1	
Hispanic	1	0	
African American	7	0	
Asian	1	0	
Native American	0	0	
Filipino	0	0	
Pacific Islander	0	0	
Other	0	0	
Total	9	1	
Females			
White	0	0	
Hispanic	0	0	
African American	0	0	
Asian	0	0	
Native American	0	0	
Filipino	0	0	
Pacific Islander	0	0	
Other	0	0	
Total	0	0	
Grand Total	9	1	

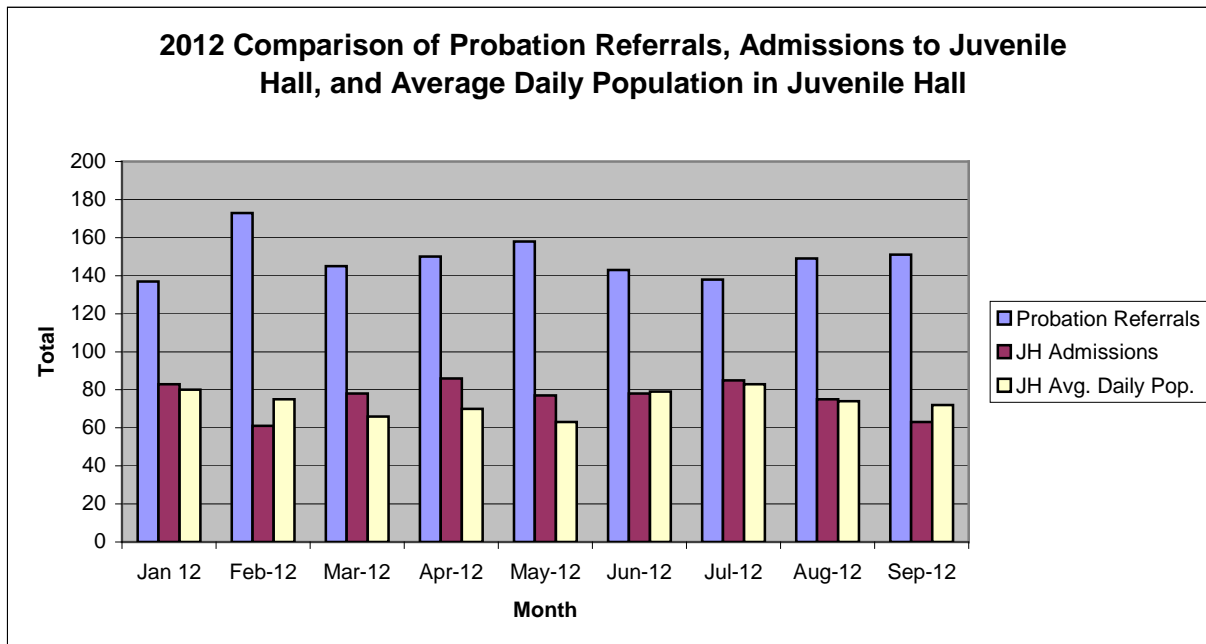
Summary Report for the Month of September 2012

Probation Services			
Active Cases by Units	August 2012	September 2012	September Average # Youth by PO
CARC	132	141	141
Intake Green (Custody Screening Investigation)	97	100	12
Intake Gold (Probation Services 1)	117	117	16
Family Integrated Treatment Services (FITS) PS2	151	145	14
Serious Offenders Program (Probation Services 3)	197	197	19
Out-of-home Placement (Probation Services 4)	177	176	22
<i>Total</i>	871	876	37
Total Active Intake Cases	370	374	
Total Probation/Supervision Cases	501	502	
<i>Total</i>	871	876	

Section II
Current Month
General Detail

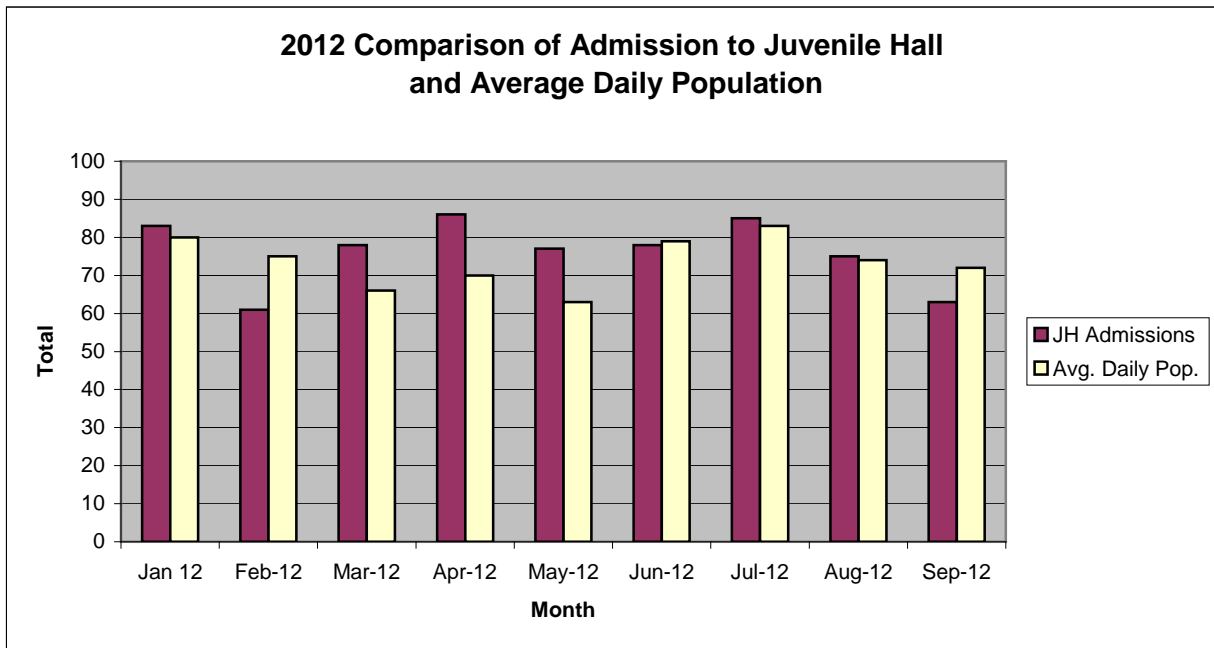
San Francisco Juvenile Probation Department

	Jan 12	Feb-12	Mar-12	Apr-12	May-12	Jun-12	Jul-12	Aug-12	Sep-12	Oct-12	Nov-12	Dec-12
Probation Referrals	137	173	145	150	158	143	138	149	151			
JH Admissions	83	61	78	86	77	78	85	75	63			
JH Avg. Daily Pop.	80	75	66	70	63	79	83	74	72			



San Francisco Juvenile Probation Department

	Jan 12	Feb-12	Mar-12	Apr-12	May-12	Jun-12	Jul-12	Aug-12	Sep-12	Oct-12	Nov-12	Dec-12
JH Admissions	83	61	78	86	77	78	85	75	63			
Avg. Daily Pop.	80	75	66	70	63	79	83	74	72			

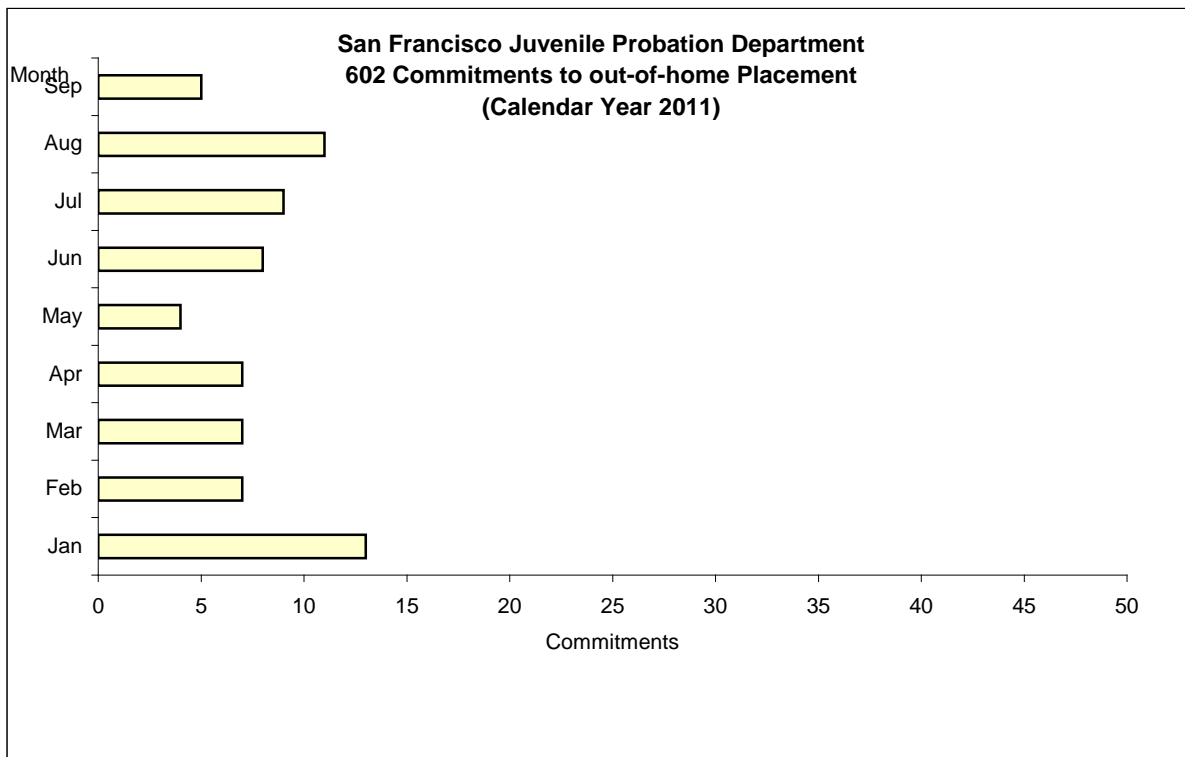


Out-of-Home Placement¹

Commitments of 602's

Calendar Year 2012

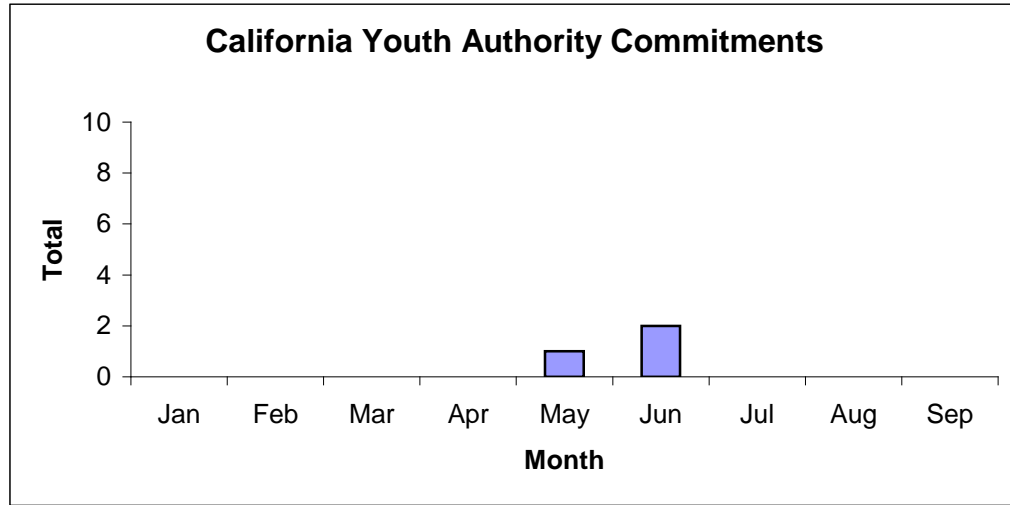
Commitments	Jan	Feb	Mar	Apr	May	Jun	Jul	Aug	Sep	Oct	Nov	Dec	Total
2012	13	7	7	7	4	8	9	11	5				71



¹ This report is based on 602 Commitments to out-of-home placements. If there is a 601 commitment, it will show as a footnote here. Figures are regularly updated to include reports from previous reporting periods.

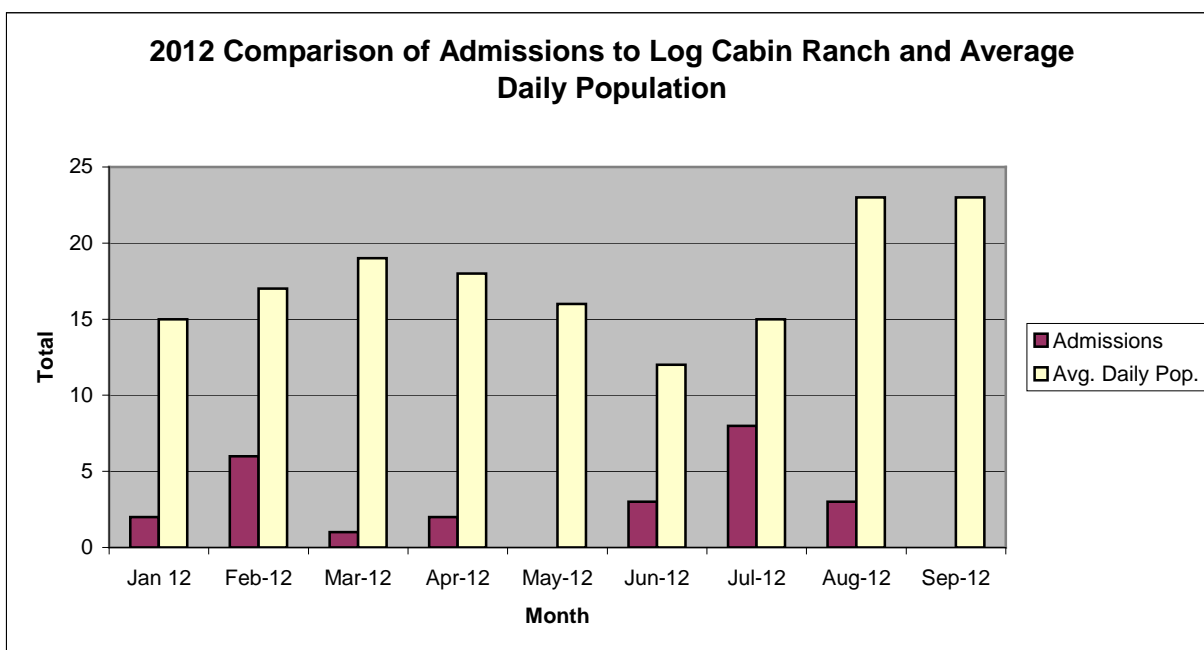
California Youth Authority Commitments (Calendar Year 2012)

Commitments	Jan	Feb	Mar	Apr	May	Jun	Jul	Aug	Sep	Oct	Nov	Dec	Total
2012	0	0	0	0	1	2	0	0	0				3



San Francisco Juvenile Probation Department

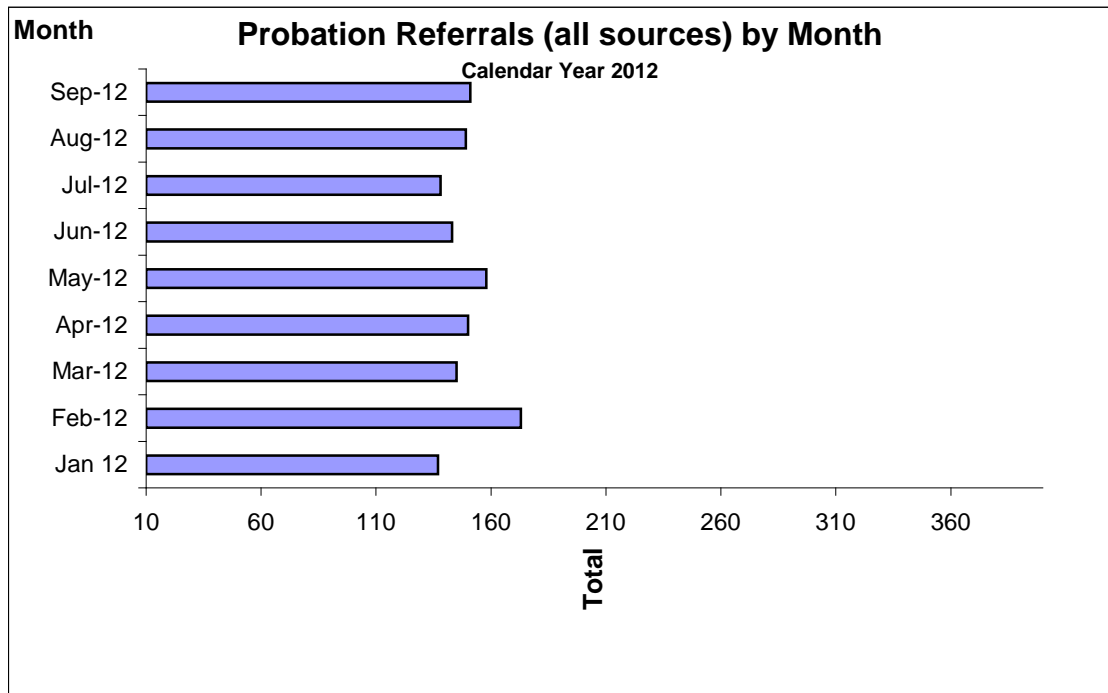
	Jan 12	Feb-12	Mar-12	Apr-12	May-12	Jun-12	Jul-12	Aug-12	Sep-12	Oct-12	Nov-12	Dec-12
Admissions	2	6	1	2	0	3	8	3	0			
Avg. Daily Pop.	15	17	19	18	16	12	15	23	23			



Probation Referrals by Month Calendar Year 2012

Probation Referrals (all sources) by Month (602 W&I)

Jan 12	137
Feb-12	173
Mar-12	145
Apr-12	150
May-12	158
Jun-12	143
Jul-12	138
Aug-12	149
Sep-12	151
Oct-12	
Nov-12	
Dec-12	

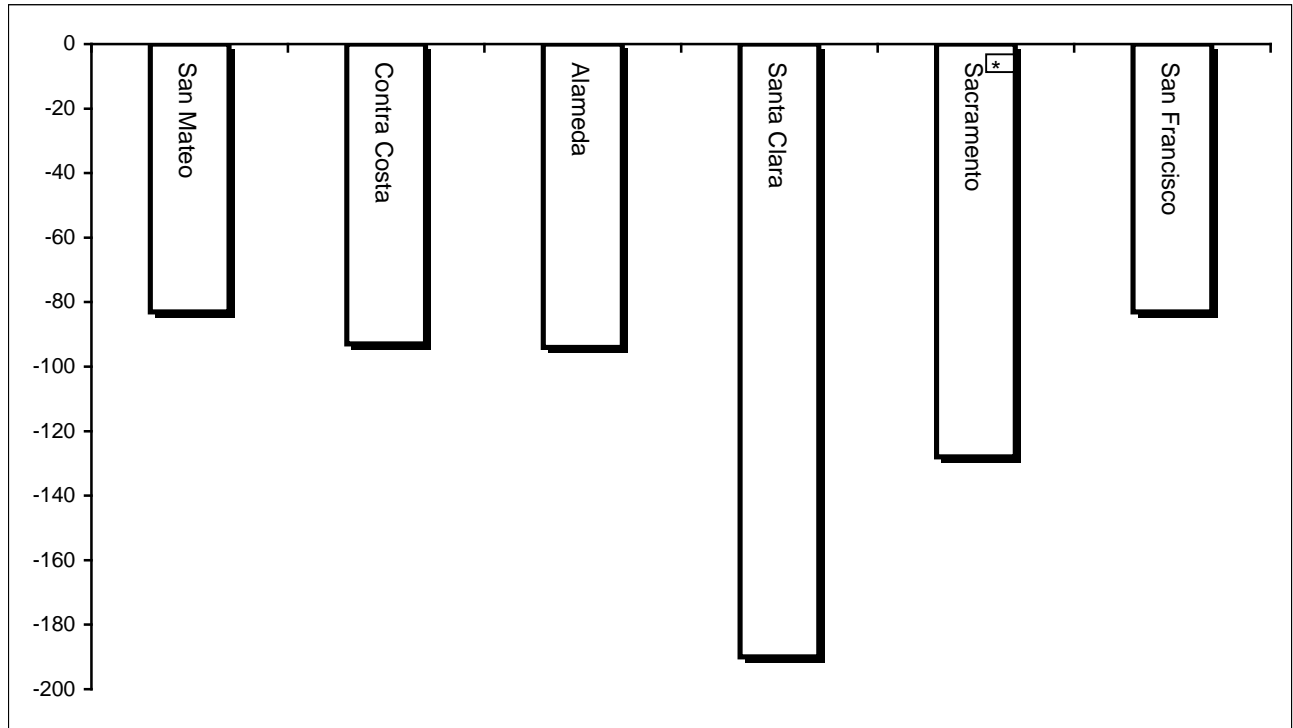


San Francisco Juvenile Probation Department
Monthly Incident Report Form
September 2012

Juvenile Hall	Battery on Staff	Injury to Staff Due to Restrain of Minor	Fights Minor on Minor	Battery Youth on Youth	Attempted Escape	AWOL	Attempted Suicide	Serious Contraband (Weapon illegal drug)	Use of Force	Self Inflicted Injuries
	0	1	5	0	0	0	0	3	1	0
	Assaults Minor on Minor	Battery on Staff with Injury	Fire	Fight with Injury	Battery Youth on Youth with Injury	Escape	Death	Suicide	Major Property Destruction	Use of Restraints (Handcuffs/ Shackles)
	2	1	0	0	0	0	0	0	0	1
Log Cabin Ranch	Battery on Staff	Injury to Staff due to Restraint of Minor	Fight	Battery Youth on Youth	Attempted Escape	AWOL	Attempted Suicide	Serious Contraband	Battery on Staff with Injury	Fire
	0	0	2	0	0	0	0	0	0	0
	Fight With Injury	Battery Youth on Youth with Injury	Escape	Death	Suicide	Major Property Destruction				
	0	0	0	0	0	0				

Bay Area Resident Juvenile Hall Comparison Over/Under Capacity

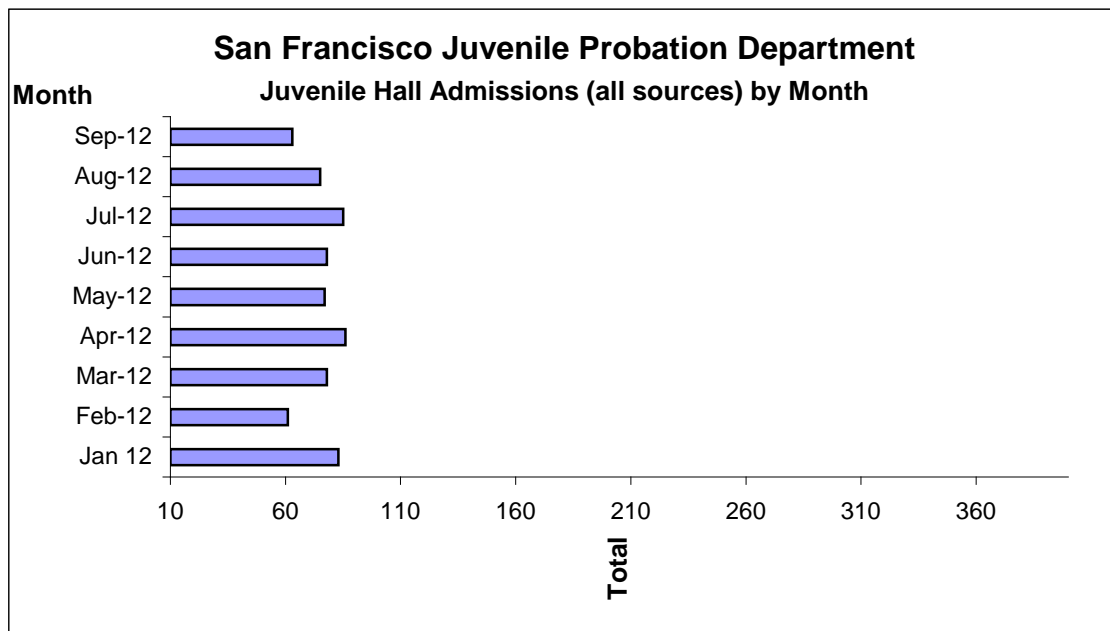
October 1st, 2012



	Rated Capacity	Actual	Over/Under Capacity
San Mateo	180	97	-83
Contra Costa	240	147	-93
Alameda	280	186	-94
Santa Clara	360	170	-190
Sacramento	308	180	-128
San Francisco	150	67	-83

Juvenile Hall Admissions by Month Calendar Year 2012

Jan 12	83
Feb-12	61
Mar-12	78
Apr-12	86
May-12	77
Jun-12	78
Jul-12	85
Aug-12	75
Sep-12	63
Oct-12	
Nov-12	
Dec-12	

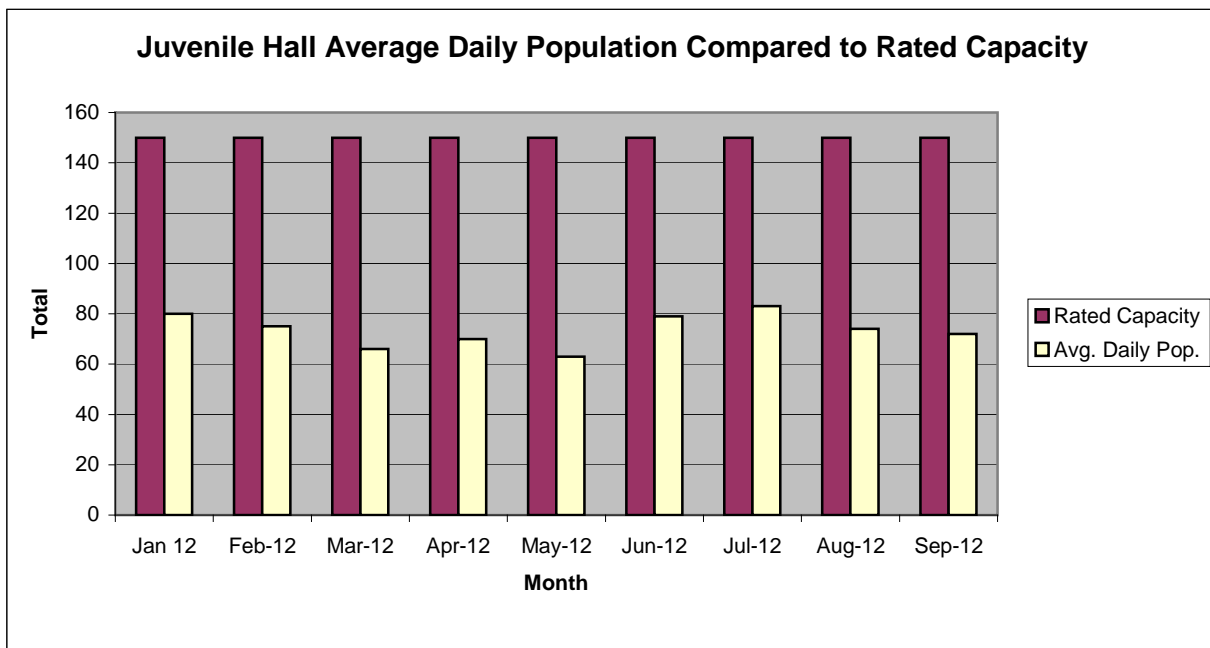


Characteristics of Juvenile Hall Detainees on September 30th, 2012

Referral Reason	MF*	Offense Description	Count	%	
187 (A) PC	F	MURDER	1	1.35%	
209 (A) PC	F	KIDNAPPING FOR RANSOM	1	1.35%	
664 /187 (A) PC	F	ATTEMPTED MURDER	6	8.11%	
288 (A) PC	F	LEWD OR LASCIVIOUS ACTS W/CHILD UNDER 14 YEARS	1	1.35%	
288 (B)(1) PC	F	LEWD AND LASCIVIOUS ACTS WITH CHILD UNDER 14 W/FORCE/ETC	1	1.35%	
246 PC	F	SHOOT AT INHABITED DWELLING/VEHICLE/ETC	1	1.35%	
211 PC	F	ROBBERY	11	14.86%	
11352 (A) HS	F	TRANSPORT/SELL NARCOTIC/CONTROLLED SUBSTANCE	1	1.35%	
459 PC	F	BURGLARY	2	2.70%	
11360 (A) HS	F	SELL/FURNISH/ETC MARIJUANA/HASHISH	1	1.35%	
245 (A)(1) PC	F	FORCE OR ADW NOT FIREARM:GBI LIKELY	5	6.76%	
245 (a)(4) PC	F	ASSAULT W/INTENT TO COMMIT BODILY HARM	1	1.35%	
11350 (A) HS	F	POSSESS NARCOTIC CONTROLLED SUBSTANCE	1	1.35%	
25400 (C)(4) PC	F	CARRY CONCEALED WEAPON PROHIBITED CLASS/UNLAWFUL POSSESSION	1	1.35%	
236 PC	F	FALSE IMPRISONMENT W/VIOLENCE/ETC	1	1.35%	
243 (C)(2) PC	F	BATTERY AGAINST POLICE OFFICER	1	1.35%	
422 PC	F	THREATEN CRIME W/INTENT TO TERRORIZE	1	1.35%	
460 (B) PC	F	BURGLARY:SECOND DEGREE	1	1.35%	
487 (C) PC	F	GRAND THEFT FROM PERSON	1	1.35%	
496 (A) PC	F	RECEIVE/ETC KNOWN STOLEN PROPERTY	2	2.70%	
25400 (A)(2) PC	F	CARRY CONCEALED WEAPON ON PERSON	2	2.70%	
25850 (C)(1) PC	F	CARRY LOADED FIREARM WITH PRIOR FELONY CONVICTION	1	1.35%	
182 (A)(1) PC	F	CONSPIRACY:COMMIT CRIME	1	1.35%	
459 PC	M	BURGLARY	1	1.35%	
487 (C) PC	M	GRAND THEFT FROM PERSON	1	1.35%	
20002 (A) VC	M	HIT AND RUN:PROPERTY DAMAGE	1	1.35%	
653.22(A) PC	M	LOITER:INTENT:PROSTITUTION	1	1.35%	
777 (A)(2) WI	M	FAIL TO OBEY ORDER OF JUVENILE COURT:602 WI	9	12.16%	
628.1 WI	M	VIOLATION(S) OF HOME SUPERVISION CONDITION	1	1.35%	
737 WI	M	CHANGE OF PLACEMENT/PLACEMENT FAILURE	6	8.11%	
BENCH WARRANT		BENCH WARRANT	2	2.70%	
WRNT602		ARREST WARRANT	5	6.76%	
CTORD WKND		COURT ORDER WEEKEND	2	2.70%	
*F=Felony; M=Misdemeanor			Total	74	100.00%

San Francisco Juvenile Probation Department

	Jan 12	Feb-12	Mar-12	Apr-12	May-12	Jun-12	Jul-12	Aug-12	Sep-12	Oct-12	Nov-12	Dec-12
Rated Capacity	150	150	150	150	150	150	150	150	150			
Avg. Daily Pop.	80	75	66	70	63	79	83	74	72			



Juvenile Hall Average Length of Stay

For the Month of September 2012

¹Released

Range of Days	<i>1-10 days</i>	<i>11-20 days</i>	<i>21-30 days</i>	<i>30 or more days</i>	Total
# of Youth Released	22	17	9	14	62
% of Population	35.48%	27.42%	14.52%	22.58%	100%
# of Days	100	242	234	1,147	1,723
% of Total Days	5.80%	14.05%	13.58%	66.57%	100%
Average Length of Stay	4.55	14.24	26.00	81.93	27.79

²In Custody

Range of Days	<i>1-10 days</i>	<i>11-20 days</i>	<i>21-30 days</i>	<i>30 or more days</i>	Total
# of Youth Detained	19	13	6	36	74
% of Population	25.68%	17.57%	8.11%	48.65%	100%
# of Days	86	172	152	4,258	4,668
% of Total Days	1.84%	3.68%	3.26%	91.22%	100%
Average Length of Stay	4.53	13.23	25.33	118.28	63.08

Notes: Less than one day of stay is calculated as one day.

¹Length of stay is calculated according to release date for those who are released.

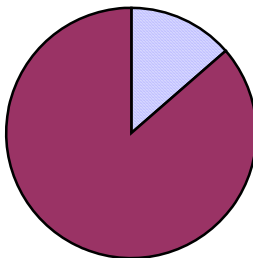
²For those still in custody, length of stay is calculated at the last day of the month.

Section III

Demographics

Gender	Frequency	Percent
Female	10	13.51%
Male	64	86.49%
Total	74	100.00%

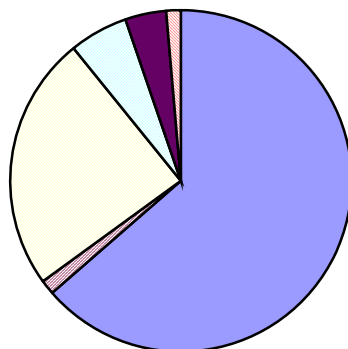
**Demographic Characteristics
Of Juvenile Hall Detainees on 9/30/12 by Gender**



■ Female
■ Male

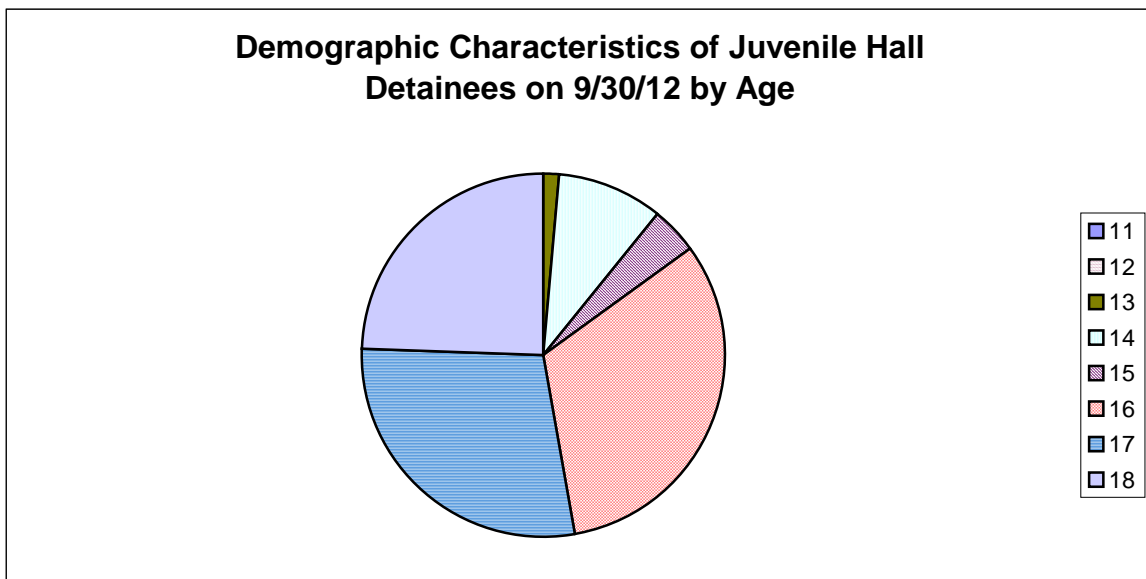
Race/Ethnic Origin	Frequency	Percent
African American	47	63.51%
Chinese	1	1.35%
Hispanic	18	24.32%
Other	4	5.41%
Samoan	3	4.05%
White	1	1.35%
Total	74	100.00%

**Demographic Characteristics of Juvenile Hall Detainees on
9/30/12 by Race**



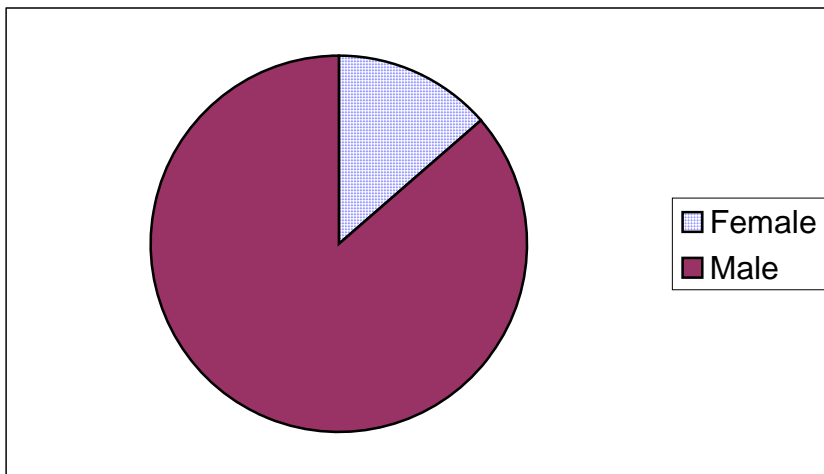
■ African American
■ Chinese
■ Hispanic
■ Other
■ Samoan
■ White

Age	Frequency	Percent
11	0	0.00%
12	0	0.00%
13	1	1.35%
14	7	9.46%
15	3	4.05%
16	24	32.43%
17	21	28.38%
18	18	24.32%
Total	74	100.00%



Demographic Characteristics of Juvenile Hall Detainees
on 9/30/2012
Age by Gender

Age	Female	Male	Total	
11	0	0	0	0.00%
12	0	0	0	0.00%
13	1	0	1	1.35%
14	3	4	7	9.46%
15	0	3	3	4.05%
16	2	22	24	32.43%
17	4	17	21	28.38%
18 and over	0	18	18	24.32%
Total	10	64	74	100.00%
	13.51%	86.49%	100.00%	



Demographic Characteristics
Of Juvenile Hall Detainees on September 30th, 2012

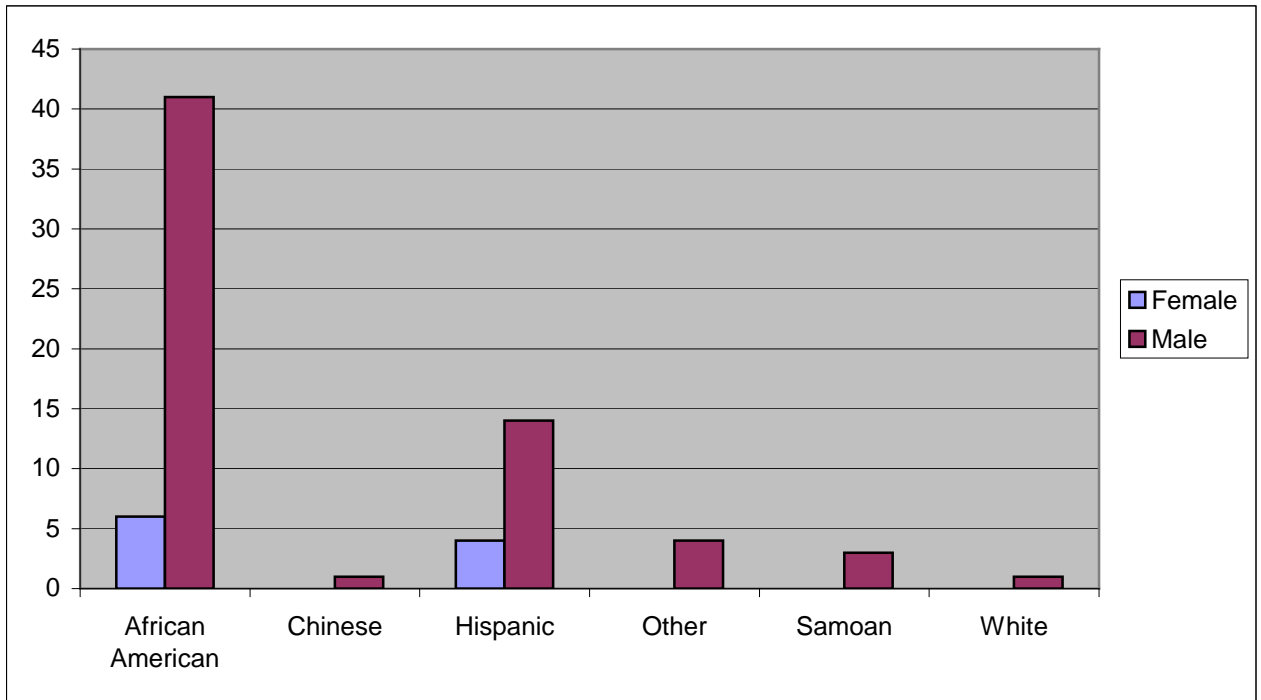
Geographic Residence of Youth	Count	%
Richmond	2	2.7%
Marina	0	0.0%
North of Market/Downtown	3	4.1%
Treasure Island/Yerba Buena Island	1	1.4%
Western Addition	7	9.5%
South of Market/Tenderloin	2	2.7%
Sunset	2	2.7%
Haight Ashbury/Castro/Upper Market	0	0.0%
Inner Mission	5	6.8%
Potrero	1	1.4%
Parkside	0	0.0%
Ingleside (West of Twin Peaks)	4	5.4%
Outer Mission	15	20.3%
Bayview	23	31.1%
Non-San Francisco and Unavailable	9	12.2%
Total	74	100.0%

Non-San Francisco and Unavailable	Count	%
BayPoint	1	11.1%
Daly City	1	11.1%
Honduras	1	11.1%
Oakland	3	33.3%
South San Francisco	1	11.1%
Unavailable	2	22.2%
Total	9	100.0%

Demographic Characteristics
Of Juvenile Hall Detainees on September 30th, 2012

Race/Ethnic Origin by Gender

Race/Ethnicity	Female	Male	Total	%
African American	6	41	47	63.5%
Chinese	0	1	1	1.4%
Hispanic	4	14	18	24.3%
Other	0	4	4	5.4%
Samoan	0	3	3	4.1%
White	0	1	1	1.4%
Total	10	64	74	100.0%

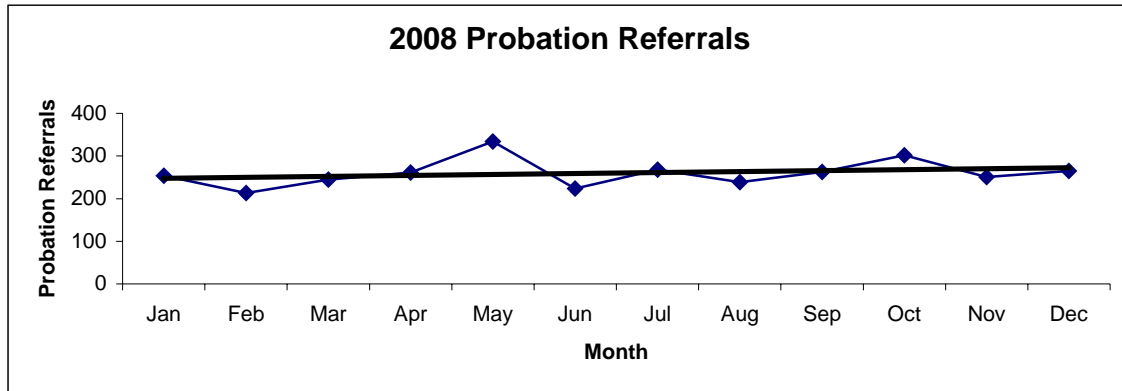


Section IV

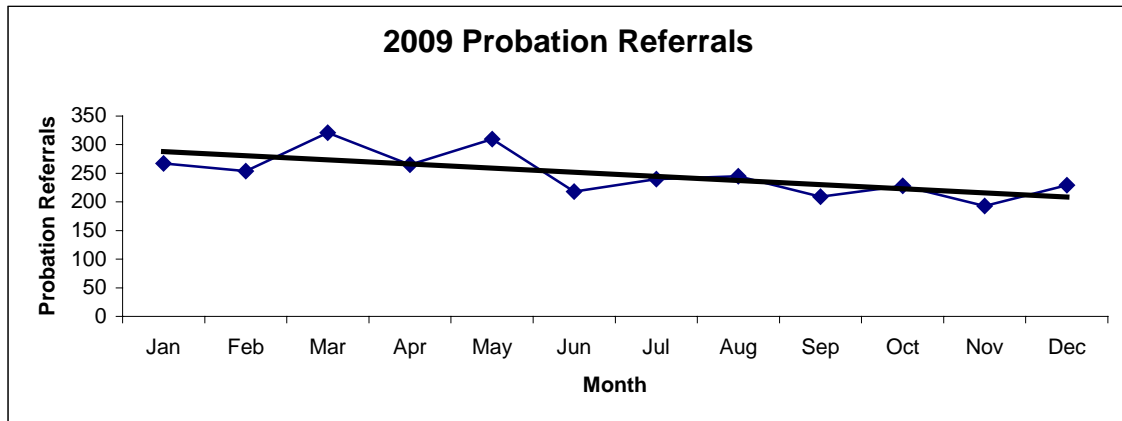
Historical Information

San Francisco Juvenile Probation Department
Probation Referrals (all sources) By Month
 (2008-2010)

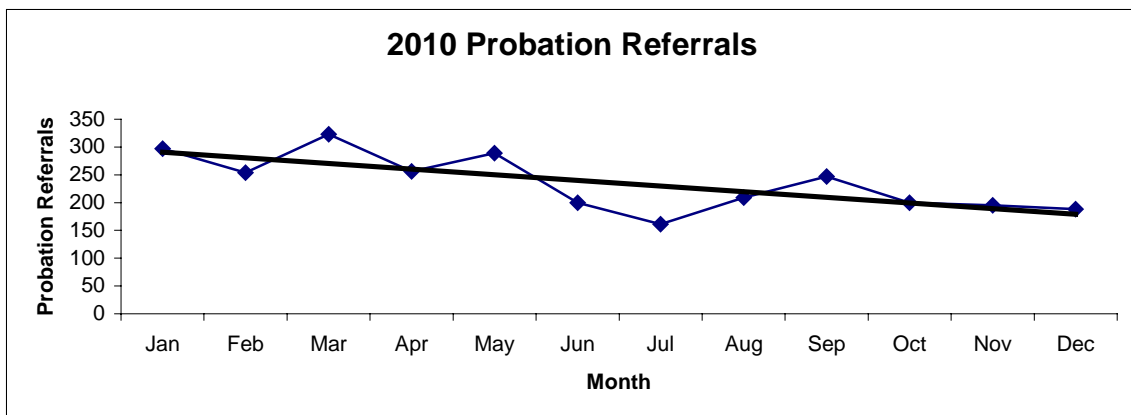
2008 Probation Referrals	Jan	Feb	Mar	Apr	May	Jun	Jul	Aug	Sep	Oct	Nov	Dec	Total
	254	213	245	261	334	224	268	239	263	302	251	265	3119



2009 Probation Referrals	Jan	Feb	Mar	Apr	May	Jun	Jul	Aug	Sep	Oct	Nov	Dec	Total
	267	254	321	265	310	218	240	245	209	228	193	229	2979

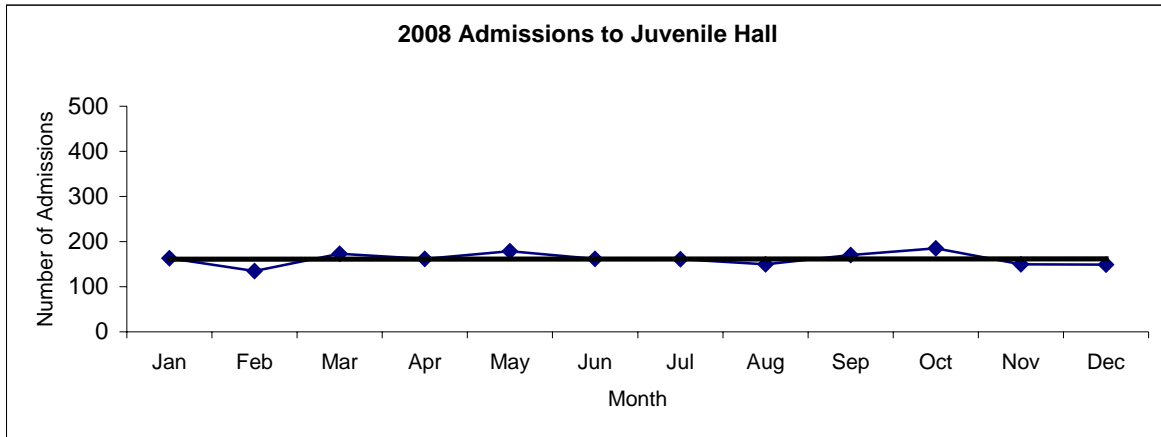


2010 Probation Referrals	Jan	Feb	Mar	Apr	May	Jun	Jul	Aug	Sep	Oct	Nov	Dec	Total
	297	254	323	256	289	200	161	209	247	200	195	188	2819

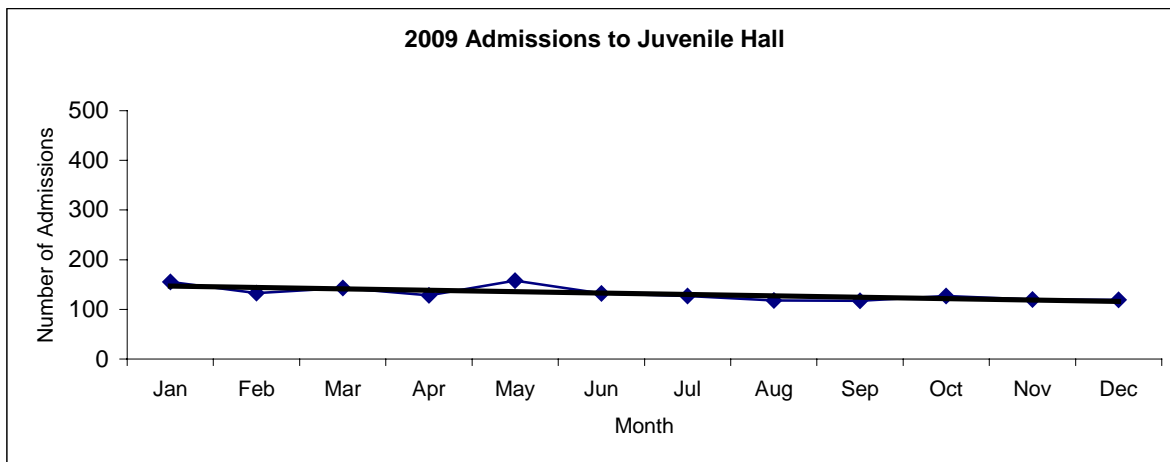


San Francisco Juvenile Probation
Juvenile Hall Admissions By Month
(2008-2010)

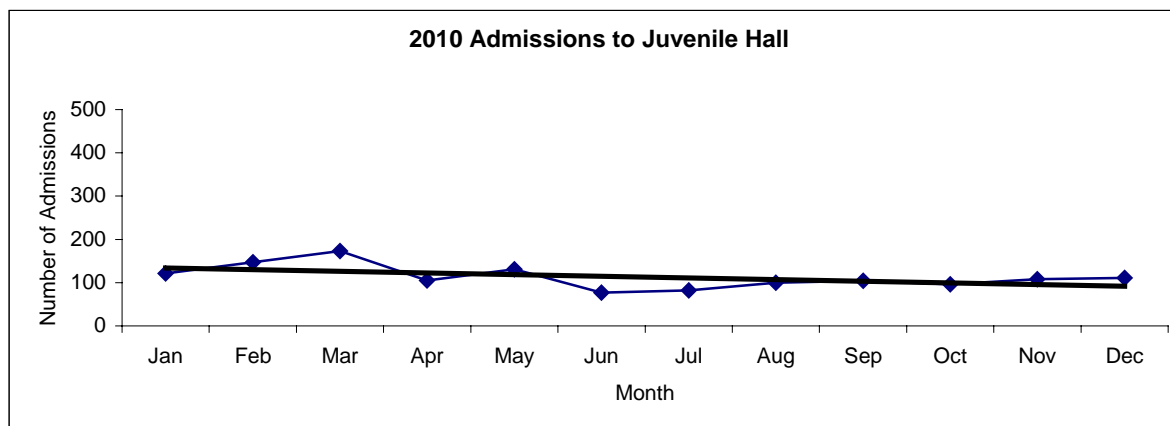
2008 Admissions	Jan	Feb	Mar	Apr	May	Jun	Jul	Aug	Sep	Oct	Nov	Dec	Total
	163	135	173	162	179	162	161	150	170	185	150	149	1939



2009 Admissions	Jan	Feb	Mar	Apr	May	Jun	Jul	Aug	Sep	Oct	Nov	Dec	Total
	155	133	143	128	158	132	127	118	117	127	120	119	1577

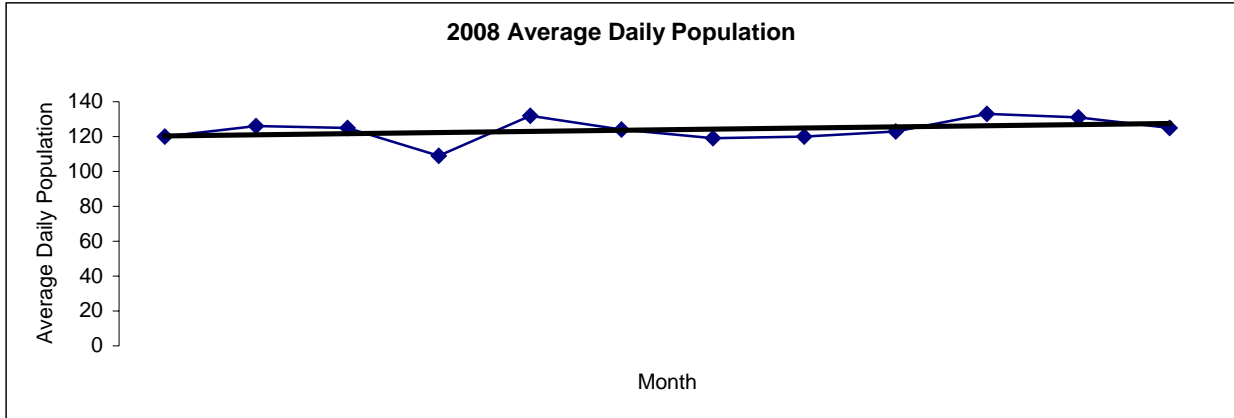


2010 Admissions	Jan	Feb	Mar	Apr	May	Jun	Jul	Aug	Sep	Oct	Nov	Dec	Total
	121	147	173	105	131	77	82	100	104	96	108	111	1355

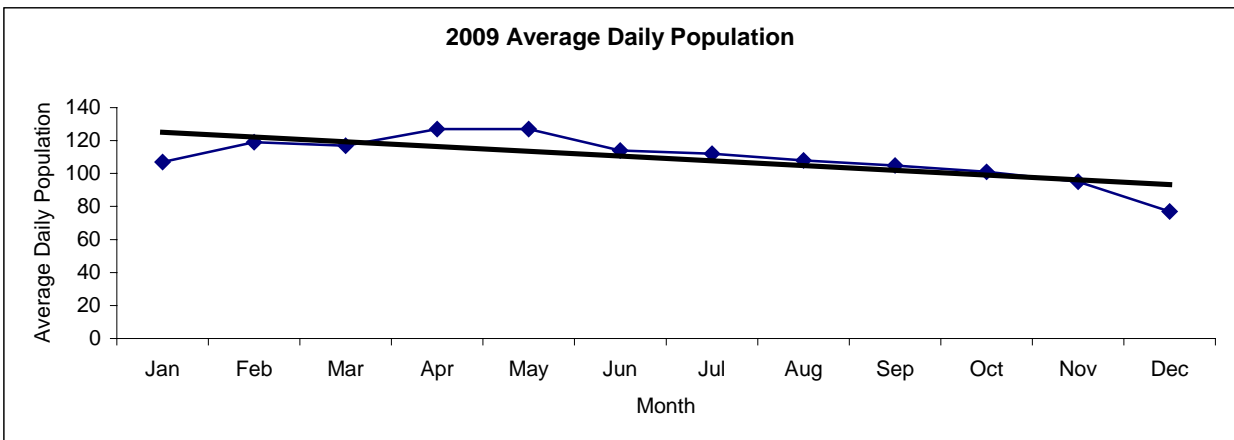


San Francisco Juvenile Probation
Juvenile Hall Average Daily Population By Month
 (2008-2010)

2008 Avg. Daily Pop.	Jan	Feb	Mar	Apr	May	Jun	Jul	Aug	Sep	Oct	Nov	Dec	Total
	120	126	125	109	132	124	119	120	123	133	131	125	124



2009 Avg. Daily Pop.	Jan	Feb	Mar	Apr	May	Jun	Jul	Aug	Sep	Oct	Nov	Dec	Total
	107	119	117	127	127	114	112	108	105	101	95	77	109



2010 Avg. Daily Pop.	Jan	Feb	Mar	Apr	May	Jun	Jul	Aug	Sep	Oct	Nov	Dec	Total
	85	104	110	107	99	97	90	88	90	84	79	92	94

