

City and County of San Francisco



Juvenile Probation Department

Monthly Report for April 2013

Presented to the Juvenile Probation Commission

May 8th, 2013

William P. Siffermann
Chief Probation Officer

Prepared by Jose Luis Perla
Information Technology Director
(415) 753-7686
jose.perla@sfgov.org

Table of Contents

Section I Summary Reports

Juvenile Hall, Log Cabin Ranch Summary Statistics	1
Probation Services Summary and California Youth Authority Statistics.....	2
Active Cases by Units.....	3

Section II Current Month General Detail

Probation Referrals, Juvenile Admissions And Average Daily Population	4
Juvenile Hall Admissions and Average Daily Population.....	5
Commitments to out-of-home placement	6
Commitments to California Youth Authority	7
Log Cabin Ranch Admissions and Average Daily Population.....	8
Probation Referrals	9
Juvenile Hall And Log Cabin Ranch Incident Report	10
Bay Area Resident Juvenile Hall Comparison	11
Juvenile Hall Admissions	12
Juvenile Hall Detainees by Detention Reason.....	13
Juvenile Hall Average Daily Population by Rated Capacity	14
Juvenile Hall Average Length of Stay	15

Section III Demographics

Juvenile Hall Detainees by Sex and Race/Ethnic Origin.....	16
Juvenile Hall Detainees by Age.....	17
Juvenile Hall Detainees by Age and Sex	18
Juvenile Hall Detainees by Geographic Residence of Youth.....	19
Juvenile Hall Detainees by Race/Ethnic Origin and Sex.....	20

Section IV
Historical Information

2004-2006 Probation Referrals21
2004-2006 Juvenile Hall Admissions22
2004-2006 Juvenile Hall Average Daily Population23



Section I

Summary Reports

Summary Report for the Month of April 2013

Juvenile Hall	<i>March 2012</i>	<i>March 2013</i>	<i>April 2012</i>	<i>April 2013</i>	<i>YTD 2012</i>	<i>YTD 2013</i>
Admissions	78	87	86	79	308	312
Average Daily Population	66	77	70	81	73	77
Average Length of Stay (Releases)	23.05	31.39	25.38	32.29	27.38	27.34
Average Length of Stay (In Custody)	68.25	65.51	67.86	63.50	70.67	67.57
Releases	63	83	89	84	315	464
Log Cabin Ranch						
Admissions:						
First Time Commitments	1	0	2	3	11	6
Recommitments	0	0	0	0	0	0
<i>Total</i>	1	0	2	3	11	6
Releases:						
Graduated	0	0	0	0	1	0
Escape	0	0	1	0	1	0
Other releases	3	4	1	1	9	5
<i>Total</i>	3	4	2	1	11	5
Average Daily Population	19	16	18	15	17	16

Summary Report for the Month of April 2013

Probation Services	<i>March 2013</i>	<i>April 2013</i>	<i>Year To Date 2013</i>
Probation Referrals	167	149	590
Total Petitions including violation of probation	73	77	277
Selected Court Dispositions:			
California Youth Authority	0	0	2
Log Cabin Ranch	1	3	6
Out of Home Placement	9	3	32
Ward Probation	23	19	71
Non-Ward Probation (725a WI)	7	2	14
Informal Probation (654 WI)	10	7	23
Violation of Probation Petitions Filed	11	5	32
California Youth Authority Monthly Count San Francisco County Juvenile Court Cases April 30th, 2013			
Category	Institutions	Parole	
Males			
White	0	0	
Hispanic	2	0	
African American	4	0	
Asian	1	0	
Native American	0	0	
Filipino	0	0	
Pacific Islander	0	0	
Other	0	0	
Total	7	0	
Females			
White	0	0	
Hispanic	0	0	
African American	0	0	
Asian	0	0	
Native American	0	0	
Filipino	0	0	
Pacific Islander	0	0	
Other	0	0	
Total	0	0	
Grand Total	7	0	

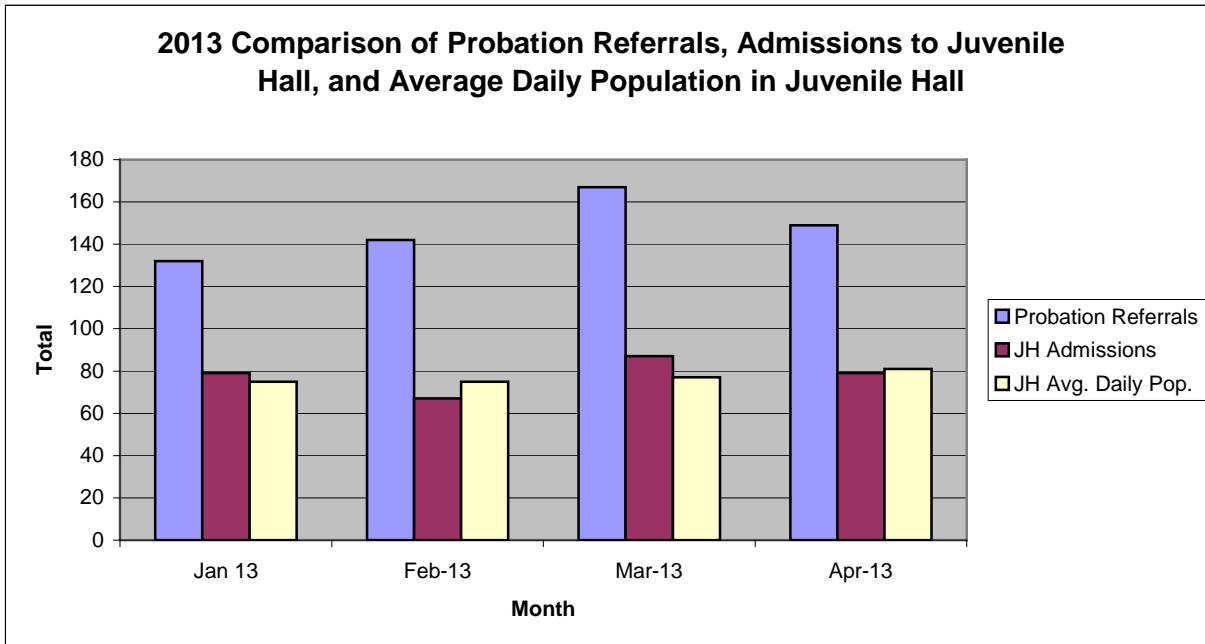
Summary Report for the Month of April 2013

Probation Services			
Active Cases by Units	March 2013	April 2013	April Average # Youth by PO
CARC	164	167	167
Intake Green (Custody Screening Investigation)	102	121	17
Intake Gold (Probation Services 1)	153	167	24
Family Integrated Treatment Services (FITS) PS2	131	126	18
Serious Offenders Program (Probation Services 3)	155	158	23
Out-of-home Placement (Probation Services 4)	155	156	26
Juvenile Collaborative Re-entry Unit (JCRU)	29	34	11
<i>Total</i>	889	929	41
Total Active Intake Cases	432	463	
Total Probation/Supervision Cases	457	466	
<i>Total</i>	889	929	

Section II
Current Month
General Detail

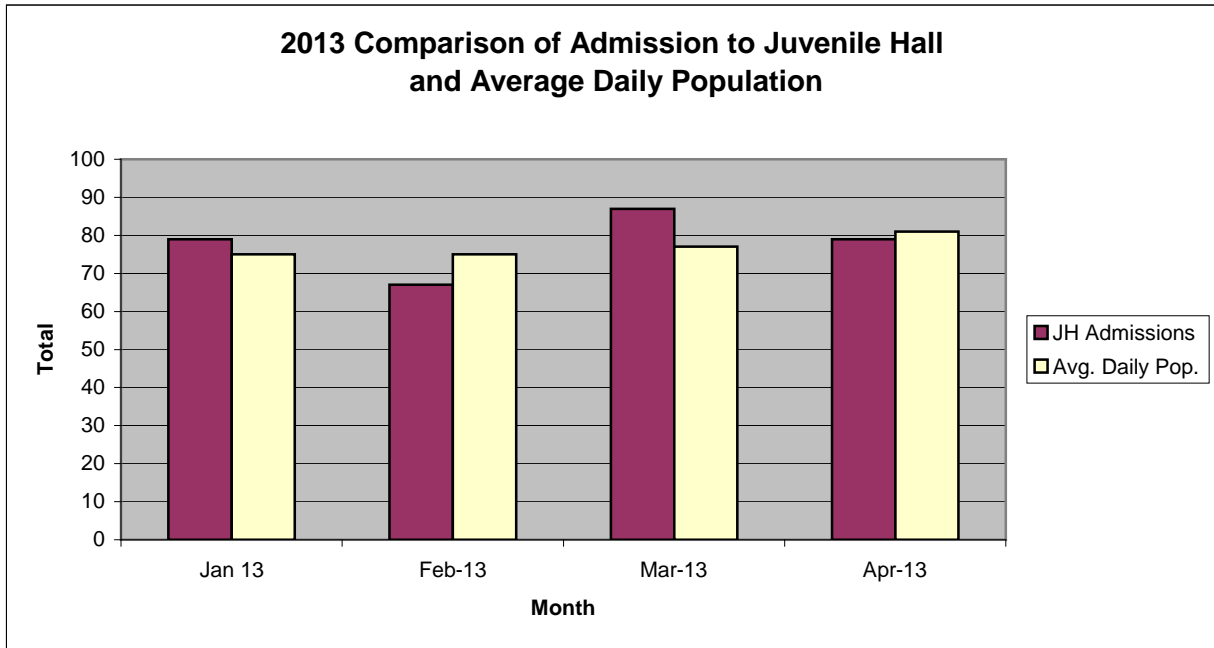
San Francisco Juvenile Probation Department

	Jan 13	Feb-13	Mar-13	Apr-13	May-13	Jun-13	Jul-13	Aug-13	Sep-13	Oct-13	Nov-13	Dec-13
Probation Referrals	132	142	167	149								
JH Admissions	79	67	87	79								
JH Avg. Daily Pop.	75	75	77	81								



San Francisco Juvenile Probation Department

	Jan 13	Feb-13	Mar-13	Apr-13	May-13	Jun-13	Jul-13	Aug-13	Sep-13	Oct-13	Nov-13	Dec-13
JH Admissions	79	67	87	79								
Avg. Daily Pop.	75	75	77	81								

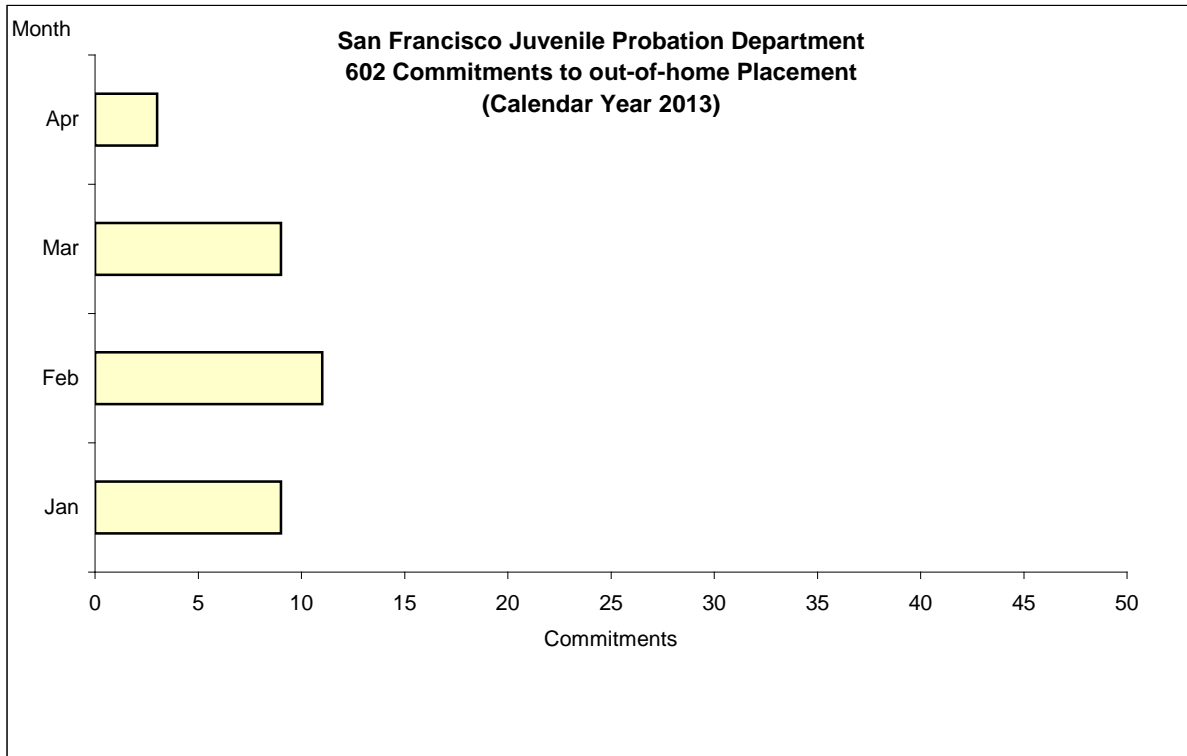


Out-of-Home Placement¹

Commitments of 602's

Calendar Year 2013

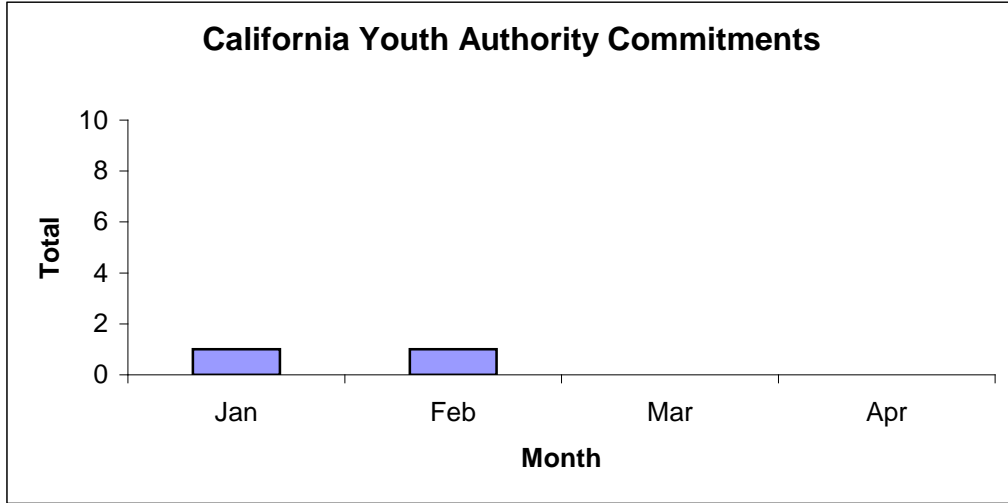
Commitments	Jan	Feb	Mar	Apr	May	Jun	Jul	Aug	Sep	Oct	Nov	Dec	Total
2013	9	11	9	3									32



¹ This report is based on 602 Commitments to out-of-home placements. If there is a 601 commitment, it will show as a footnote here. Figures are regularly updated to include reports from previous reporting periods.

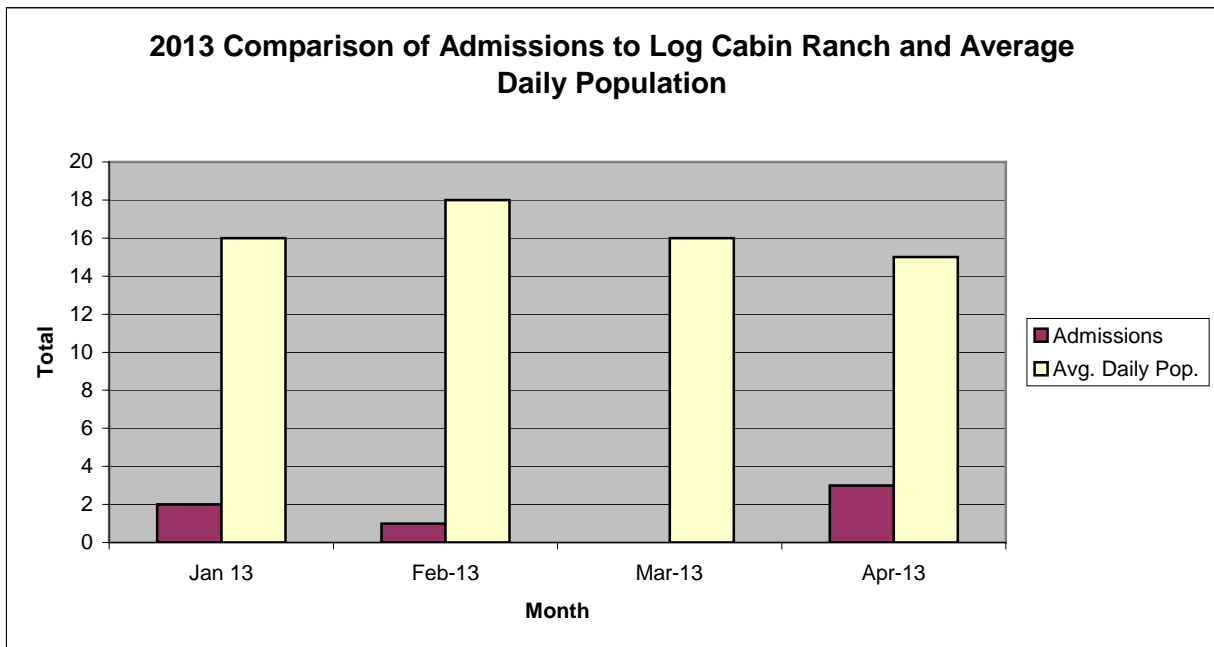
California Youth Authority
Commitments
(Calendar Year 2013)

Commitments	Jan	Feb	Mar	Apr	May	Jun	Jul	Aug	Sep	Oct	Nov	Dec	Total
2013	1	1	0	0									2



San Francisco Juvenile Probation Department

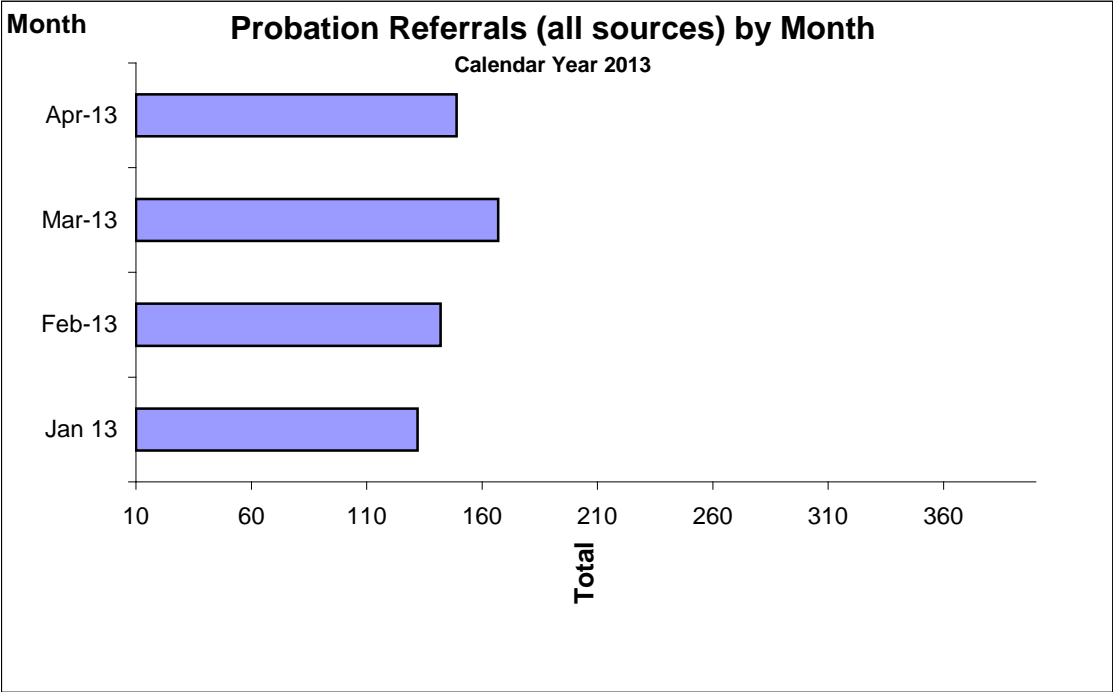
	Jan 13	Feb-13	Mar-13	Apr-13	May-13	Jun-13	Jul-13	Aug-13	Sep-13	Oct-13	Nov-13	Dec-13
Admissions	2	1	0	3								
Avg. Daily Pop.	16	18	16	15								



Probation Referrals by Month Calendar Year 2013

Probation Referrals (all sources) by Month (602 W&I)

Jan 13	132
Feb-13	142
Mar-13	167
Apr-13	149
May-13	
Jun-13	
Jul-13	
Aug-13	
Sep-13	
Oct-13	
Nov-13	
Dec-13	

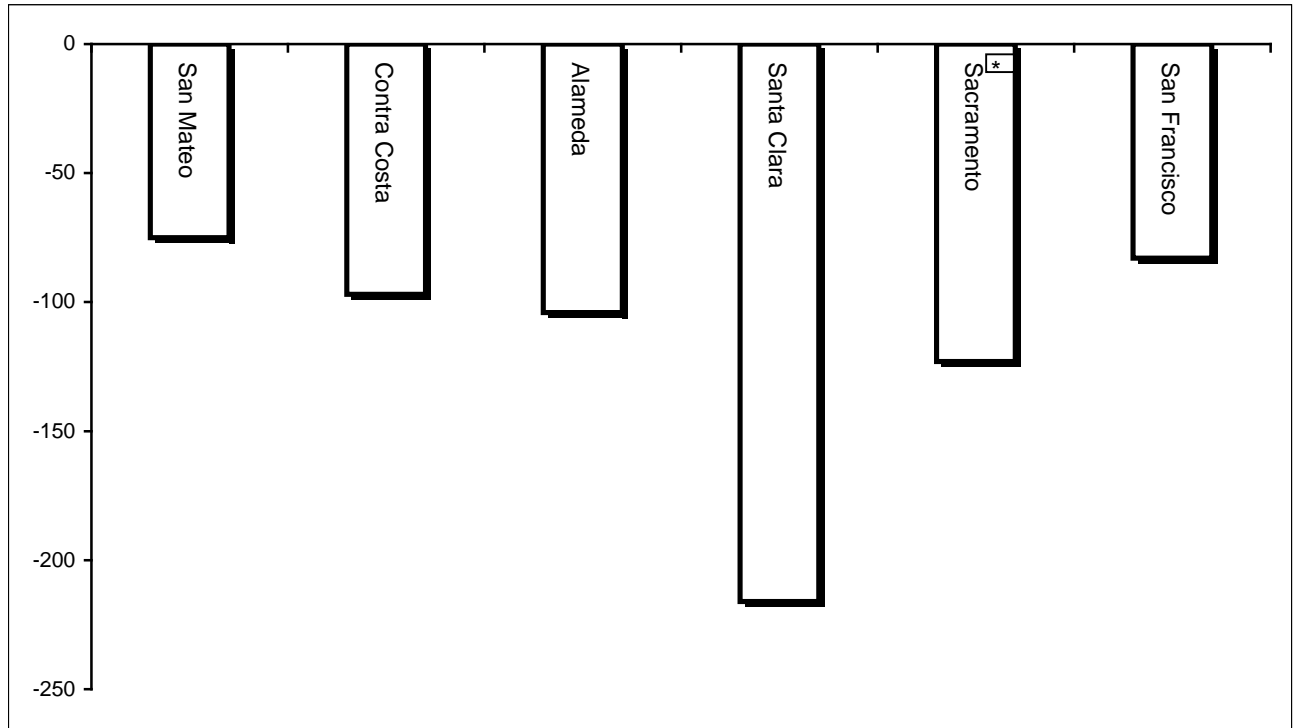


San Francisco Juvenile Probation Department
 Monthly Incident Report Form
 April 2013

Juvenile Hall	Battery on Staff	Injury to Staff Due to Restrain of Minor	Fights Minor on Minor	Battery Youth on Youth	Attempted Escape	AWOL	Attempted Suicide	Serious Contraband (Weapon illegal drug)	Use of Force	Self Inflicted Injuries
	0	0	0	7	0	0	1	17	0	0
	Assaults Minor on Minor	Battery on Staff with Injury	Fire	Fight with Injury	Battery Youth on Youth with Injury	Escape	Death	Suicide	Major Property Destruction	Use of Restraints (Handcuffs/ Shackles)
0	1	0	0	0	2	0	0	0	4	
Log Cabin Ranch	Battery on Staff	Injury to Staff due to Restraint of Minor	Fight	Battery Youth on Youth	Attempted Escape	AWOL	Attempted Suicide	Serious Contraband	Battery on Staff with Injury	Fire
	0	0	0	0	0	0	0	0	0	0
	Fight With Injury	Battery Youth on Youth with Injury	Escape	Death	Suicide	Major Property Destruction				
0	0	0	0	0	0	0				

Bay Area Resident Juvenile Hall Comparison Over/Under Capacity

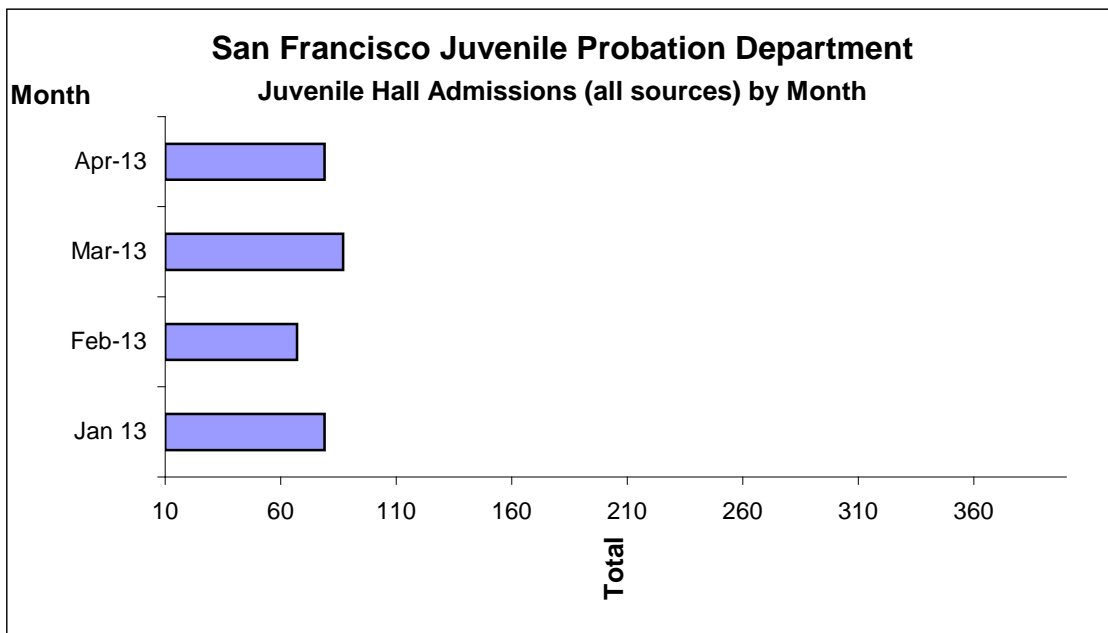
May 2nd, 2013



	Rated Capacity	Actual	Over/Under Capacity
San Mateo	180	105	-75
Contra Costa	240	143	-97
Alameda	280	176	-104
Santa Clara	360	144	-216
Sacramento	308	185	-123
San Francisco	150	67	-83

Juvenile Hall Admissions by Month Calendar Year 2013

Jan 13	79
Feb-13	67
Mar-13	87
Apr-13	79
May-13	
Jun-13	
Jul-13	
Aug-13	
Sep-13	
Oct-13	
Nov-13	
Dec-13	

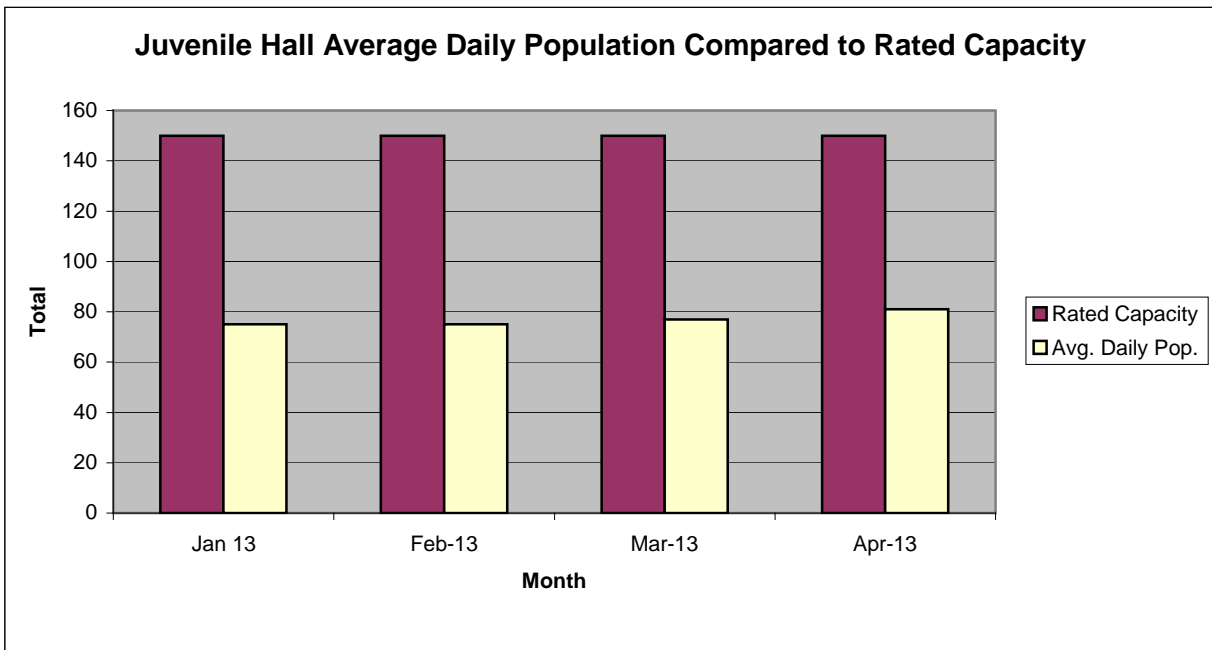


Characteristics of Juvenile Hall Detainees on April 30th, 2013

Referral Reason	MF*	Offense Description	Count	%
187 (A) PC	F	MURDER	2	2.70%
209 (A) PC	F	KIDNAPPING FOR RANSOM	1	1.35%
664 /187 (A) PC	F	ATTEMPTED MURDER	3	4.05%
261 (A)(2) PC	F	RAPE BY FORCE/FEAR/ETC	1	1.35%
207 (A) PC	F	KIDNAPPING	1	1.35%
211 PC	F	ROBBERY	18	24.32%
11352 (A) HS	F	TRANSPORT/SELL NARCOTIC/CONTROLLED SUBSTANCE	1	1.35%
220 (A)(1) PC	F	ASSAULT:WITH INTENT TO RAPE	1	1.35%
459 PC	F	BURGLARY:FIRST DEGREE	1	1.35%
212.5 (C) PC	F	ROBBERY:SECOND DEGREE	3	4.05%
4574 (A) PC	F	WEAPON/TEAR GAS OFFENSE:PRISON/JAIL/ETC	1	1.35%
245 (A)(2) PC	F	ASSAULT WITH FIREARM ON PERSON	1	1.35%
245 (A)(1) PC	F	ASSAULT W/DEADLY WEAPON:NOT F/ARM	5	6.76%
245 (A)(1) PC	F	FORCE OR ADW NOT FIREARM:GBI LIKELY	1	1.35%
496 D(A) PC	F	POSSESS STOLEN VEHICLE/VESSEL/ETC	1	1.35%
25400 (C)(4) PC	F	CARRY CONCEALED WEAPON PROHIBITED CLASS/UNLAWFUL POSSESSION	2	2.70%
487 PC	F	GRAND THEFT	1	1.35%
496 C PC	F	COPY/ETC REALTY TITLE INFORMATION [OVER \$400]	1	1.35%
29820 (B) PC	F	CONVICTED PERSON POSSESS/ETC FIREARM WHILE UNDER AGE 30	1	1.35%
25850 (C)(4) PC	F	CARRY LOADED FIREARM:UNLAWFUL/PROHIBITED POSSESSION	1	1.35%
11550 (A) HS	M	USE/UNDER INFLUENCE OF CONTROLLED SUBSTANCE	1	1.35%
148 (A)(1) PC	M	OBSTRUCT/RESIST/ETC PUBLIC/PEACE OFFICER/EMERGENCY MED TECH	1	1.35%
243 (A) PC	M	BATTERY ON PERSON	1	1.35%
148.9 (A) PC	M	FALSE IDENTIFICATION TO SPECIFIC PEACE OFFICERS	1	1.35%
777 (A)(2) WI	M	FAIL TO OBEY ORDER OF JUVENILE COURT:602 WI	5	6.76%
628.1 WI	M	VIOLATION(S) OF HOME SUPERVISION CONDITION	6	8.11%
737 WI	M	CHANGE OF PLACEMENT/PLACEMENT FAILURE	3	4.05%
WRNT602		ARREST WARRANT	4	5.41%
CTORD 602		COURT ORDER	5	6.76%
*M=Misdemeanor; F=Felony			Total	74 100.00%

San Francisco Juvenile Probation Department

	Jan 13	Feb-13	Mar-13	Apr-13	May-13	Jun-13	Jul-13	Aug-13	Sep-13	Oct-13	Nov-13	Dec-13
Rated Capacity	150	150	150	150								
Avg. Daily Pop.	75	75	77	81								



Juvenile Hall Average Length of Stay

For the Month of April 2013

¹Released

Range of Days	<i>1-10 days</i>	<i>11-20 days</i>	<i>21-30 days</i>	<i>30 or more days</i>	Total
# of Youth Released	40	14	11	19	84
% of Population	47.62%	16.67%	13.10%	22.62%	100%
# of Days	170	217	279	2,046	2,712
% of Total Days	6.27%	8.00%	10.29%	75.44%	100%
Average Length of Stay	4.25	15.50	25.36	107.68	32.29

²In Custody

Range of Days	<i>1-10 days</i>	<i>11-20 days</i>	<i>21-30 days</i>	<i>30 or more days</i>	Total
# of Youth Detained	16	7	10	41	74
% of Population	21.62%	9.46%	13.51%	55.41%	100%
# of Days	70	107	236	4,286	4,699
% of Total Days	1.49%	2.28%	5.02%	91.21%	100%
Average Length of Stay	4.38	15.29	23.60	104.54	63.50

Notes: Less than one day of stay is calculated as one day.

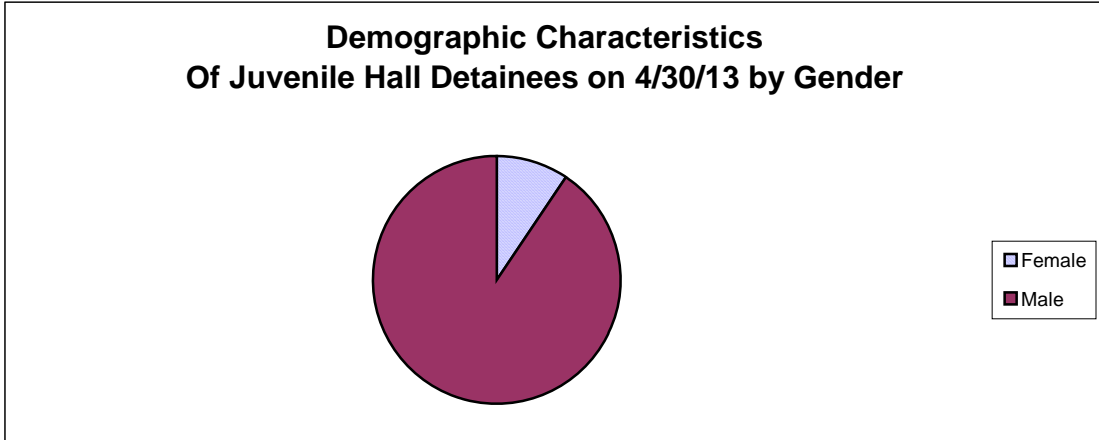
¹Length of stay is calculated according to release date for those who are released.

²For those still in custody, length of stay is calculated at the last day of the month.

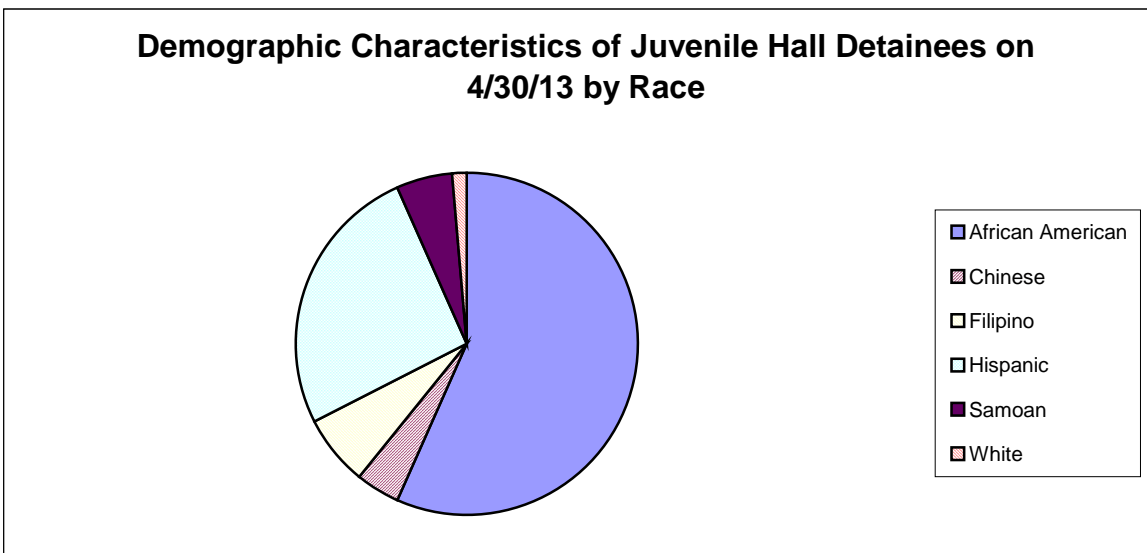
Section III

Demographics

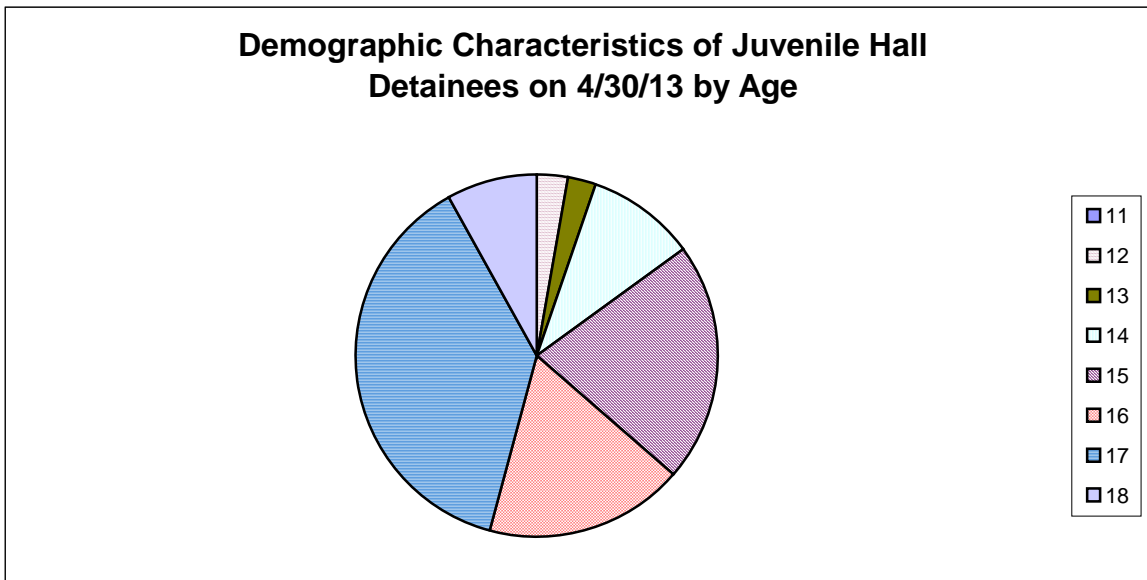
Gender	Frequency	Percent
Female	7	9.46%
Male	67	90.54%
Total	74	100.00%



Race/Ethnic Origin	Frequency	Percent
African American	42	56.76%
Chinese	3	4.05%
Filipino	5	6.76%
Hispanic	19	25.68%
Samoan	4	5.41%
White	1	1.35%
Total	74	100.00%

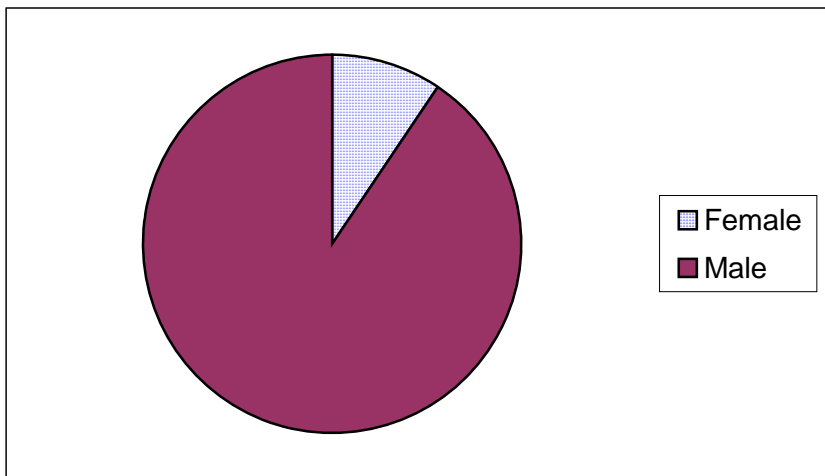


Age	Frequency	Percent
11	0	0.00%
12	2	2.70%
13	2	2.70%
14	7	9.46%
15	16	21.62%
16	13	17.57%
17	28	37.84%
18	6	8.11%
Total	74	100.00%



Demographic Characteristics of Juvenile Hall Detainees
on 4/30/2013
Age by Gender

Age	Female	Male	Total	
11	0	0	0	0.00%
12	0	2	2	2.70%
13	0	2	2	2.70%
14	1	6	7	9.46%
15	2	14	16	21.62%
16	2	11	13	17.57%
17	2	26	28	37.84%
18 and over	0	6	6	8.11%
Total	7	67	74	100.00%
	9.46%	90.54%	100.00%	



Demographic Characteristics
Of Juvenile Hall Detainees on April 30th, 2013

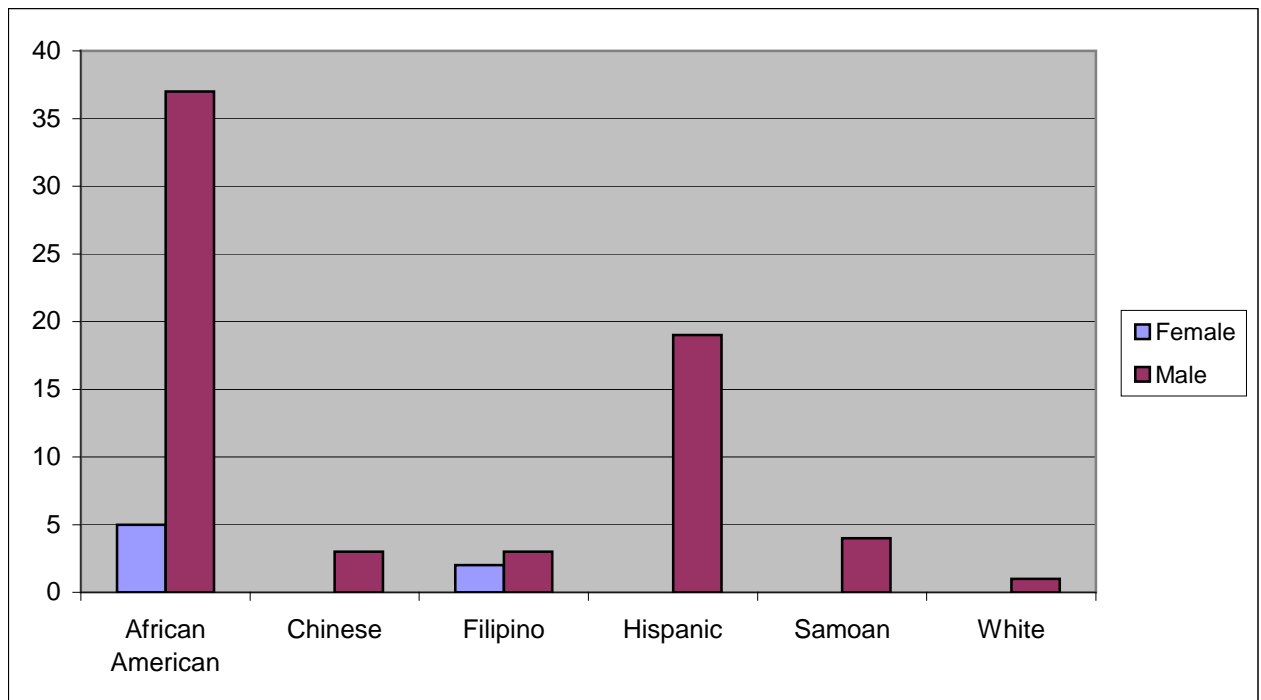
Geographic Residence of Youth	Count	%
Richmond	0	0.0%
Marina	0	0.0%
North of Market/Downtown	0	0.0%
Treasure Island/Yerba Buena Island	3	4.1%
Western Addition	7	9.5%
South of Market/Tenderloin	2	2.7%
Sunset	1	1.4%
Haight Ashbury/Castro/Upper Market	1	1.4%
Inner Mission	6	8.1%
Potrero	2	2.7%
Parkside	3	4.1%
Ingleside (West of Twin Peaks)	4	5.4%
Outer Mission	11	14.9%
Bayview	19	25.7%
Non-San Francisco and Unavailable	15	20.3%
Total	74	100.0%

Non-San Francisco and Unavailable	Count	%
Antioch	1	6.7%
Fremont	1	6.7%
Honduras	1	6.7%
Millbrae	1	6.7%
Oakland	3	20.0%
Pacifica	1	6.7%
San Martin	1	6.7%
South San Francisco	2	13.3%
Vallejo	1	6.7%
Unavailable	3	20.0%
Total	15	100.0%

Demographic Characteristics
Of Juvenile Hall Detainees on April 30th, 2013

Race/Ethnic Origin by Gender

Race/Ethnicity	Female	Male	Total	%
African American	5	37	42	56.8%
Chinese	0	3	3	4.1%
Filipino	2	3	5	6.8%
Hispanic	0	19	19	25.7%
Samoan	0	4	4	5.4%
White	0	1	1	1.4%
Total	7	67	74	100.0%

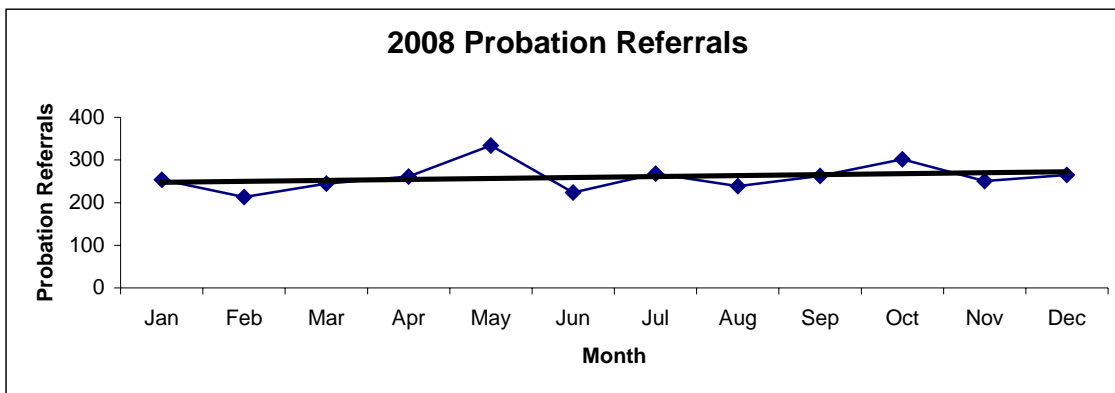


Section IV

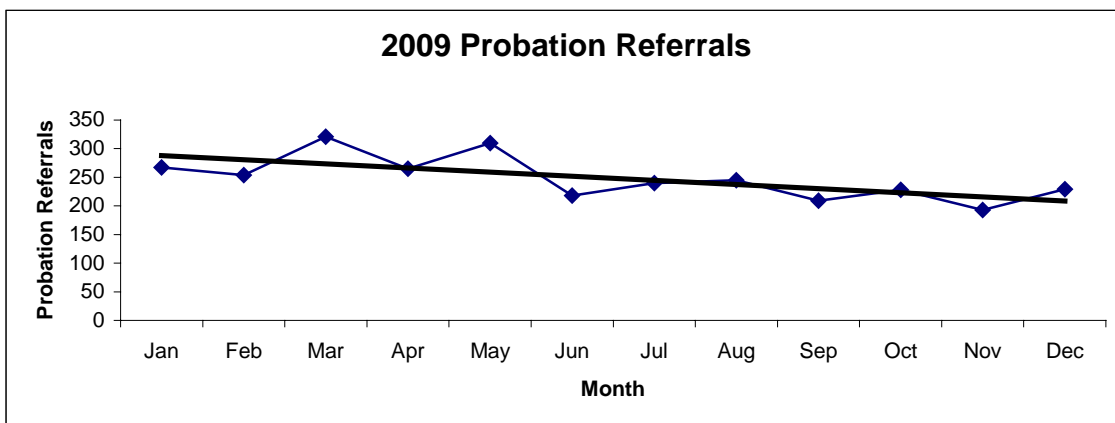
Historical Information

San Francisco Juvenile Probation Department
Probation Referrals (all sources) By Month
(2008-2010)

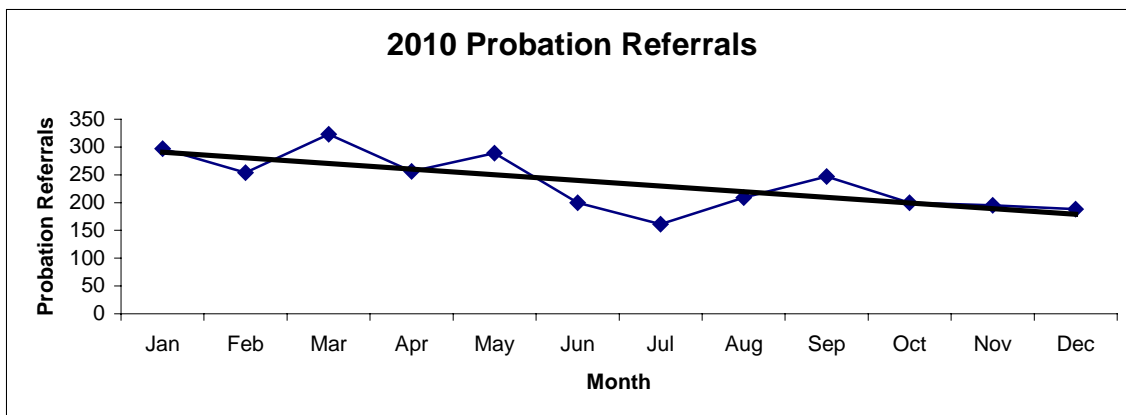
2008 Probation Referrals	Jan	Feb	Mar	Apr	May	Jun	Jul	Aug	Sep	Oct	Nov	Dec	Total
	254	213	245	261	334	224	268	239	263	302	251	265	3119



2009 Probation Referrals	Jan	Feb	Mar	Apr	May	Jun	Jul	Aug	Sep	Oct	Nov	Dec	Total
	267	254	321	265	310	218	240	245	209	228	193	229	2979

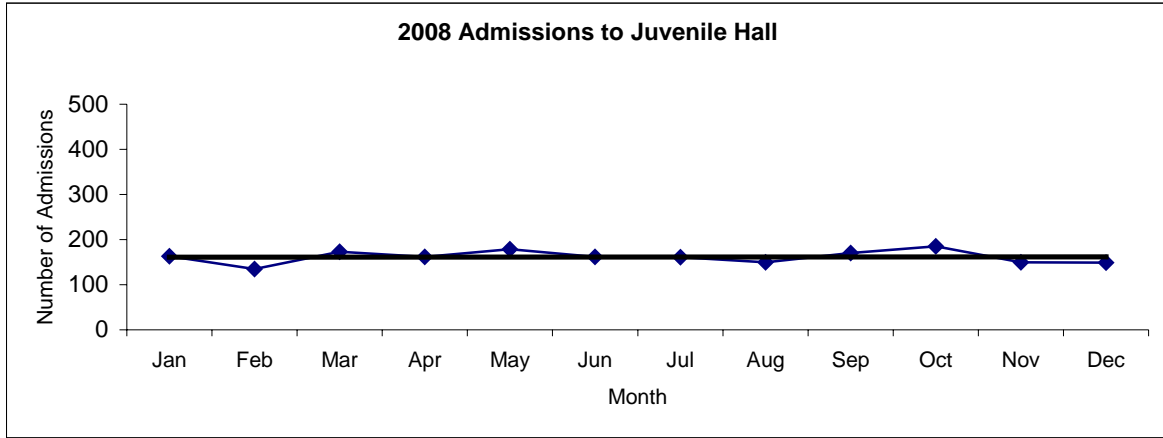


2010 Probation Referrals	Jan	Feb	Mar	Apr	May	Jun	Jul	Aug	Sep	Oct	Nov	Dec	Total
	297	254	323	256	289	200	161	209	247	200	195	188	2819

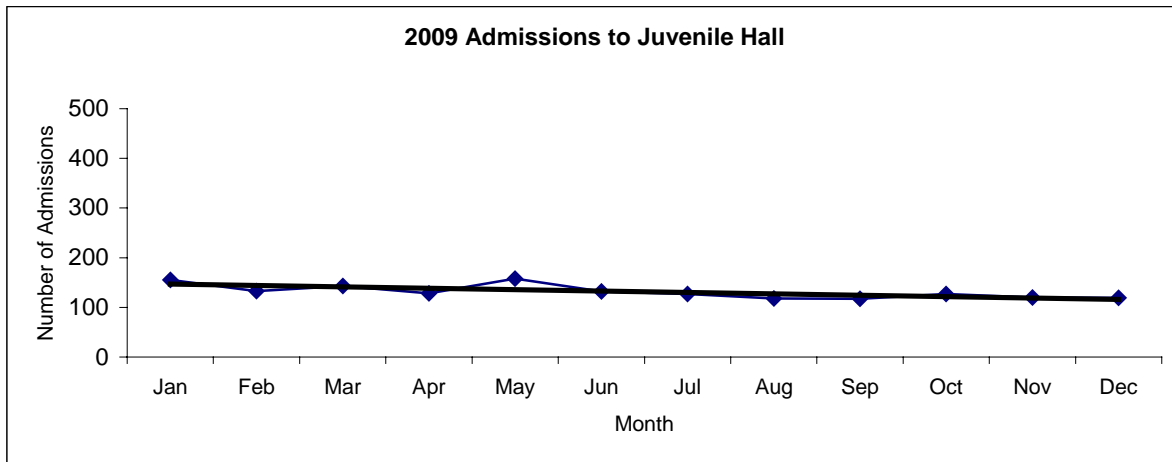


**San Francisco Juvenile Probation
Juvenile Hall Admissions By Month
(2008-2010)**

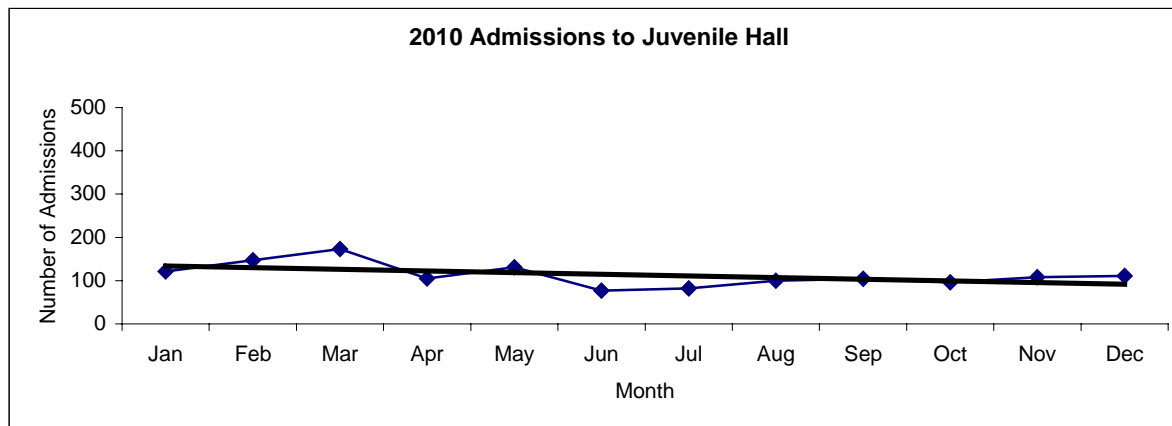
2008 Admissions	Jan	Feb	Mar	Apr	May	Jun	Jul	Aug	Sep	Oct	Nov	Dec	Total
	163	135	173	162	179	162	161	150	170	185	150	149	1939



2009 Admissions	Jan	Feb	Mar	Apr	May	Jun	Jul	Aug	Sep	Oct	Nov	Dec	Total
	155	133	143	128	158	132	127	118	117	127	120	119	1577

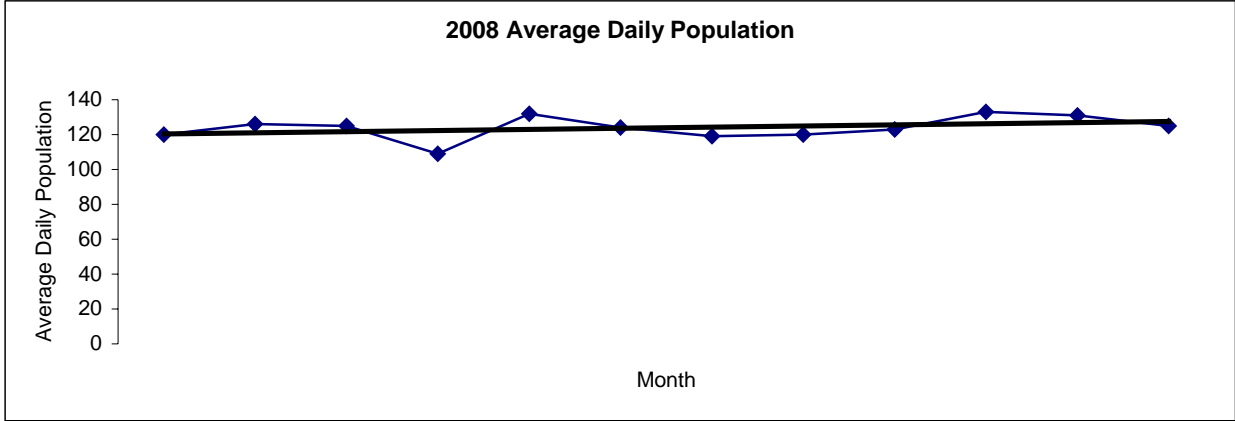


2010 Admissions	Jan	Feb	Mar	Apr	May	Jun	Jul	Aug	Sep	Oct	Nov	Dec	Total
	121	147	173	105	131	77	82	100	104	96	108	111	1355

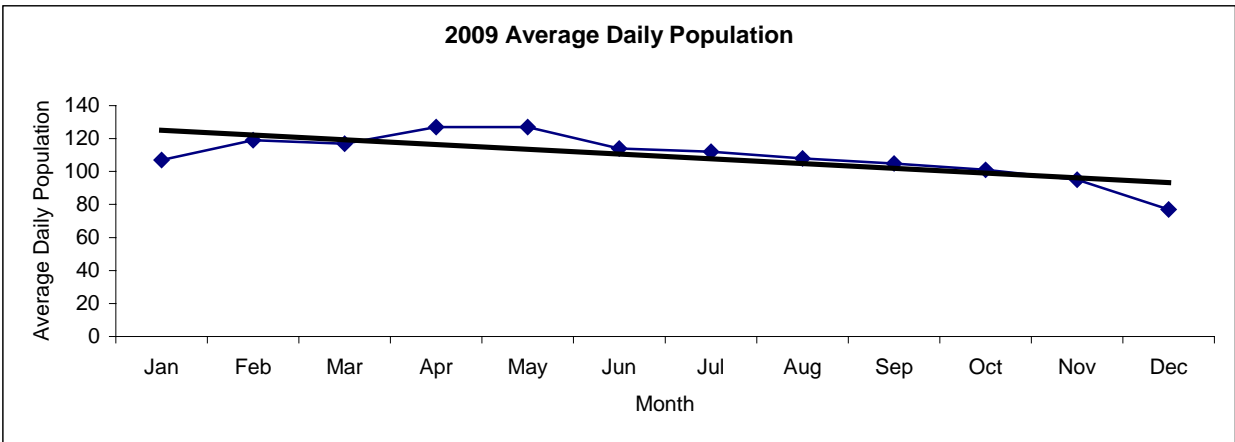


San Francisco Juvenile Probation
Juvenile Hall Average Daily Population By Month
 (2008-2010)

2008 Avg. Daily Pop.	Jan	Feb	Mar	Apr	May	Jun	Jul	Aug	Sep	Oct	Nov	Dec	Total
	120	126	125	109	132	124	119	120	123	133	131	125	124



2009 Avg. Daily Pop.	Jan	Feb	Mar	Apr	May	Jun	Jul	Aug	Sep	Oct	Nov	Dec	Total
	107	119	117	127	127	114	112	108	105	101	95	77	109



2010 Avg. Daily Pop.	Jan	Feb	Mar	Apr	May	Jun	Jul	Aug	Sep	Oct	Nov	Dec	Total
	85	104	110	107	99	97	90	88	90	84	79	92	94

