

# City and County of San Francisco



Juvenile Probation Department

---

## Monthly Report for July 2013

Presented to the Juvenile Probation Commission

August 14<sup>th</sup>, 2013

Allen A. Nance  
Chief Probation Officer

Prepared by Jose Luis Perla  
Information Technology Director  
(415) 753-7686  
[jose.perla@sfgov.org](mailto:jose.perla@sfgov.org)

# Table of Contents

---

## **Section I Summary Reports**

|  |   |
|--|---|
| Juvenile Hall, Log Cabin Ranch Summary Statistics .....                    | 1 |
| Probation Services Summary and California Youth Authority Statistics ..... | 2 |
| Active Cases by Units .....  | 3 |

## **Section II Current Month General Detail**

|   |    |
|---|----|
| Probation Referrals, Juvenile Admissions And Average Daily Population ..... | 4  |
| Juvenile Hall Admissions and Average Daily Population .....                 | 5  |
| Commitments to out-of-home placement .....                                  | 6  |
| Commitments to California Youth Authority .....                             | 7  |
| Log Cabin Ranch Admissions and Average Daily Population .....               | 8  |
| Probation Referrals .....   | 9  |
| Juvenile Hall And Log Cabin Ranch Incident Report .....                     | 10 |
| Bay Area Resident Juvenile Hall Comparison .....                            | 11 |
| Juvenile Hall Admissions .....  | 12 |
| Juvenile Hall Detainees by Detention Reason .....                           | 13 |
| Juvenile Hall Average Daily Population by Rated Capacity .....              | 14 |
| Juvenile Hall Average Length of Stay .....                                  | 15 |

## **Section III Demographics**

|  |    |
|--|----|
| Juvenile Hall Detainees by Sex and Race/Ethnic Origin .....    | 16 |
| Juvenile Hall Detainees by Age .....                           | 17 |
| Juvenile Hall Detainees by Age and Sex .....                   | 18 |
| Juvenile Hall Detainees by Geographic Residence of Youth ..... | 19 |
| Juvenile Hall Detainees by Race/Ethnic Origin and Sex .....    | 20 |

## **Section IV**

### **Historical Information**

|  |    |
|--|----|
| 2004-2006 Probation Referrals .....                    | 21 |
| 2004-2006 Juvenile Hall Admissions .....               | 22 |
| 2004-2006 Juvenile Hall Average Daily Population ..... | 23 |

---

# **Section I**

## **Summary Reports**

## Summary Report for the Month of July 2013

| <b>Juvenile Hall</b>                | <i>June<br/>2012</i> | <i>June<br/>2013</i> | <i>July<br/>2012</i> | <i>July<br/>2013</i> | <i>YTD<br/>2012</i> | <i>YTD<br/>2013</i> |
|-------------------------------------|----------------------|----------------------|----------------------|----------------------|---------------------|---------------------|
| Admissions                          | 78                   | 75                   | 85                   | 90                   | 548                 | 567                 |
| Average Daily Population            | 79                   | 74                   | 83                   | 81                   | 74                  | 78                  |
| Average Length of Stay (Releases)   | 23.93                | 32.86                | 38                   | 22.44                | 27.92               | 28.36               |
| Average Length of Stay (In Custody) | 69.17                | 51.80                | 69.38                | 52.13                | 69.92               | 61.30               |
| Releases                            | 69                   | 74                   | 92                   | 81                   | 554                 | 705                 |
|                                     |                      |                      |                      |                      |                     |                     |
| <b>Log Cabin Ranch</b>              |                      |                      |                      |                      |                     |                     |
| Admissions:                         |                      |                      |                      |                      |                     |                     |
| First Time Commitments              | 3                    | 2                    | 8                    | 2                    | 22                  | 13                  |
| Recommitments                       | 0                    | 0                    | 0                    | 0                    | 0                   | 0                   |
| <i>Total</i>                        | <b>3</b>             | <b>2</b>             | <b>8</b>             | <b>2</b>             | <b>22</b>           | <b>13</b>           |
| Releases:                           |                      |                      |                      |                      |                     |                     |
| Graduated                           | 0                    | 0                    | 0                    | 0                    | 1                   | 0                   |
| Escape                              | 0                    | 0                    | 0                    | 1                    | 1                   | 1                   |
| Other releases                      | 4                    | 1                    | 0                    | 2                    | 16                  | 11                  |
| <i>Total</i>                        | <b>4</b>             | <b>1</b>             | <b>0</b>             | <b>3</b>             | <b>18</b>           | <b>12</b>           |
| Average Daily Population            | 20                   | 16                   | 15                   | 14                   | 17                  | 16                  |
|                                     |                      |                      |                      |                      |                     |                     |

## Summary Report for the Month of July 2013

| Probation Services  | June<br>2013 | July<br>2013 | Year To Date<br>2013 |
|---|--------------|--------------|----------------------|
| Probation Referrals   | 116          | 131          | 1,014                |
| Total Petitions including violation of probation  | 54           | 84           | 504                  |
|   |              |              |                      |
| Selected Court Dispositions:  |              |              |                      |
| California Youth Authority  | 1            | 0            | 3                    |
| Log Cabin Ranch   | 1            | 1            | 11                   |
| Out of Home Placement   | 12           | 9            | 58                   |
| Ward Probation  | 28           | 20           | 137                  |
| Non-Ward Probation (725a WI)  | 2            | 4            | 25                   |
| Informal Probation (654 WI)   | 6            | 11           | 45                   |
| Violation of Probation Petitions Filed  | 10           | 11           | 62                   |
|   |              |              |                      |
| California Youth Authority Monthly Count<br>San Francisco County Juvenile Court Cases<br>July 31 <sup>st</sup> , 2013 |              |              |                      |
|   |              |              |                      |
| Category  | Institutions | Parole       |                      |
| Males   |              |              |                      |
| White   | 0            | 0            |                      |
| Hispanic  | 2            | 0            |                      |
| African American  | 4            | 0            |                      |
| Asian   | 1            | 0            |                      |
| Native American   | 0            | 0            |                      |
| Filipino  | 0            | 0            |                      |
| Pacific Islander  | 0            | 0            |                      |
| Other   | 0            | 0            |                      |
| Total   | 7            | 0            |                      |
|   |              |              |                      |
| Females   |              |              |                      |
| White   | 0            | 0            |                      |
| Hispanic  | 0            | 0            |                      |
| African American  | 0            | 0            |                      |
| Asian   | 0            | 0            |                      |
| Native American   | 0            | 0            |                      |
| Filipino  | 0            | 0            |                      |
| Pacific Islander  | 0            | 0            |                      |
| Other   | 0            | 0            |                      |
| Total   | 0            | 0            |                      |
| Grand Total   | 7            | 0            |                      |

## Summary Report for the Month of July 2013

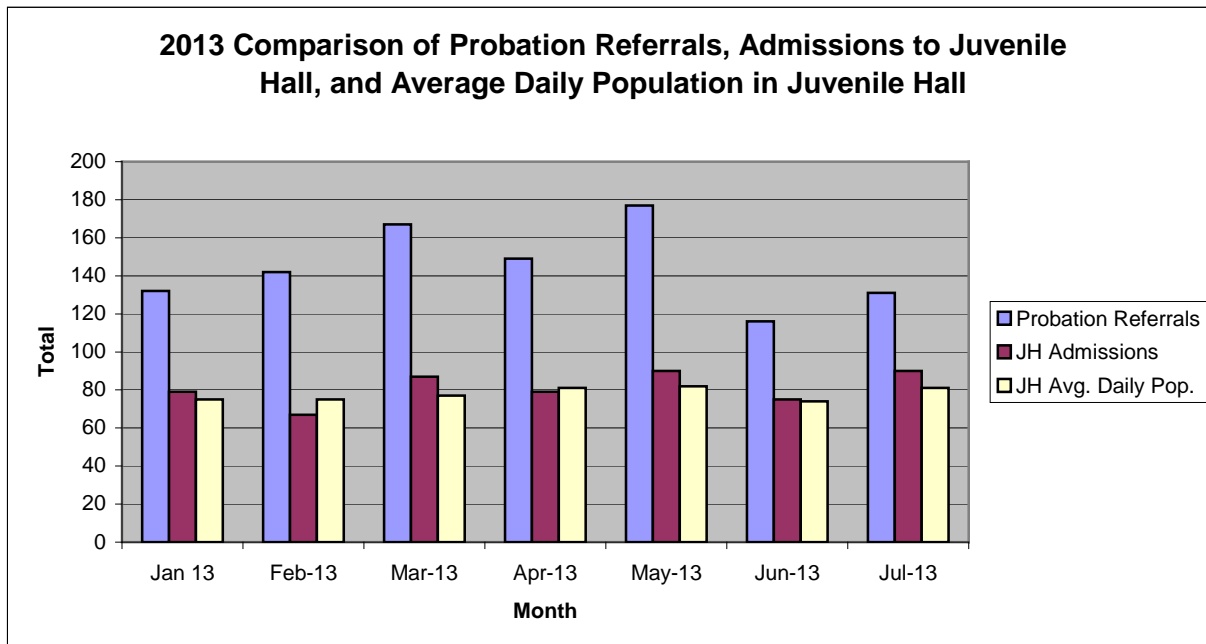
| <b>Probation Services</b>                        |              |              |                                  |
|--|--------------|--------------|----------------------------------|
| <b>Active Cases by Units</b>                     | June<br>2013 | July<br>2013 | July<br>Average #<br>Youth by PO |
| CARC   | 143          | 134          | 134                              |
| Intake Green (Custody Screening Investigation)   | 100          | 98           | 14                               |
| Intake Gold (Probation Services 1)               | 167          | 170          | 24                               |
| Family Integrated Treatment Services (FITS) PS2  | 123          | 117          | 17                               |
| Serious Offenders Program (Probation Services 3) | 155          | 154          | 22                               |
| Out-of-home Placement (Probation Services 4)     | 155          | 147          | 25                               |
| Juvenile Collaborative Re-entry Unit (JCRU)      | 44           | 46           | 15                               |
| <i>Total</i>                                     | <b>887</b>   | <b>866</b>   | <b>36</b>                        |
|  |              |              |                                  |
| Total Active Intake Cases                        | 423          | 410          |                                  |
| Total Probation/Supervision Cases                | 464          | 456          |                                  |
| <i>Total</i>                                     | <b>887</b>   | <b>866</b>   |                                  |
|  |              |              |                                  |

**Section II**  
**Current Month**  
**General Detail**



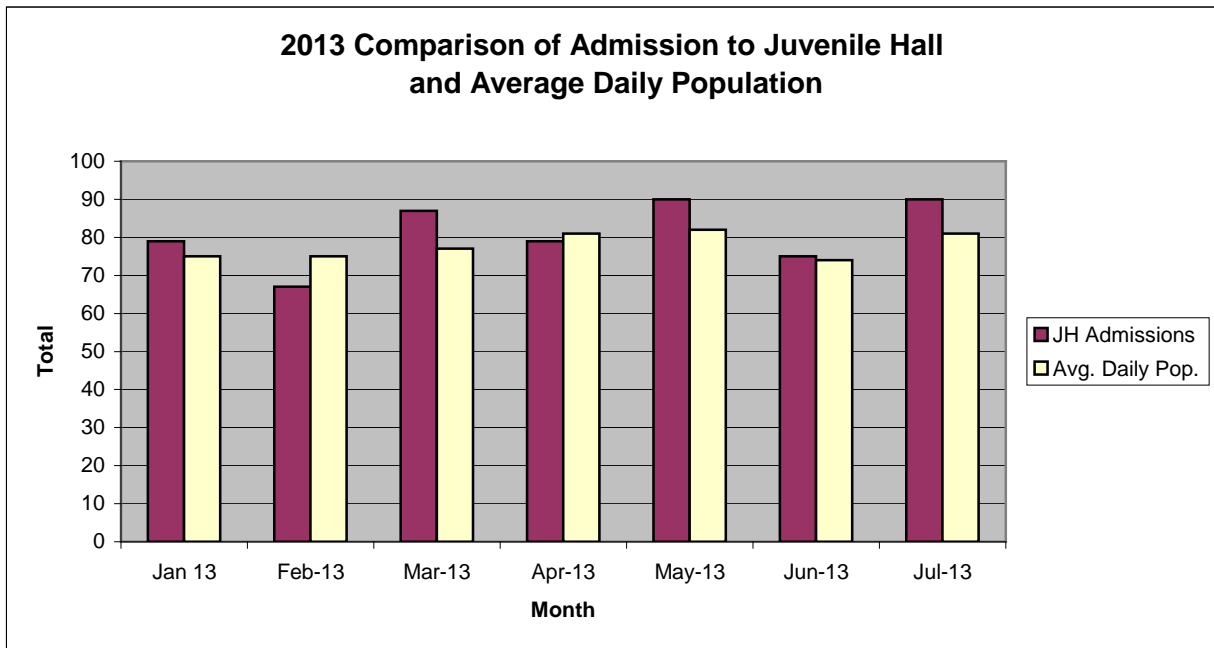
## San Francisco Juvenile Probation Department

|                     | Jan 13 | Feb-13 | Mar-13 | Apr-13 | May-13 | Jun-13 | Jul-13 | Aug-13 | Sep-13 | Oct-13 | Nov-13 | Dec-13 |
|---------------------|--------|--------|--------|--------|--------|--------|--------|--------|--------|--------|--------|--------|
| Probation Referrals | 132    | 142    | 167    | 149    | 177    | 116    | 131    |        |        |        |        |        |
| JH Admissions       | 79     | 67     | 87     | 79     | 90     | 75     | 90     |        |        |        |        |        |
| JH Avg. Daily Pop.  | 75     | 75     | 77     | 81     | 82     | 74     | 81     |        |        |        |        |        |



## San Francisco Juvenile Probation Department

|                 | Jan 13 | Feb-13 | Mar-13 | Apr-13 | May-13 | Jun-13 | Jul-13 | Aug-13 | Sep-13 | Oct-13 | Nov-13 | Dec-13 |
|-----------------|--------|--------|--------|--------|--------|--------|--------|--------|--------|--------|--------|--------|
| JH Admissions   | 79     | 67     | 87     | 79     | 90     | 75     | 90     |        |        |        |        |        |
| Avg. Daily Pop. | 75     | 75     | 77     | 81     | 82     | 74     | 81     |        |        |        |        |        |

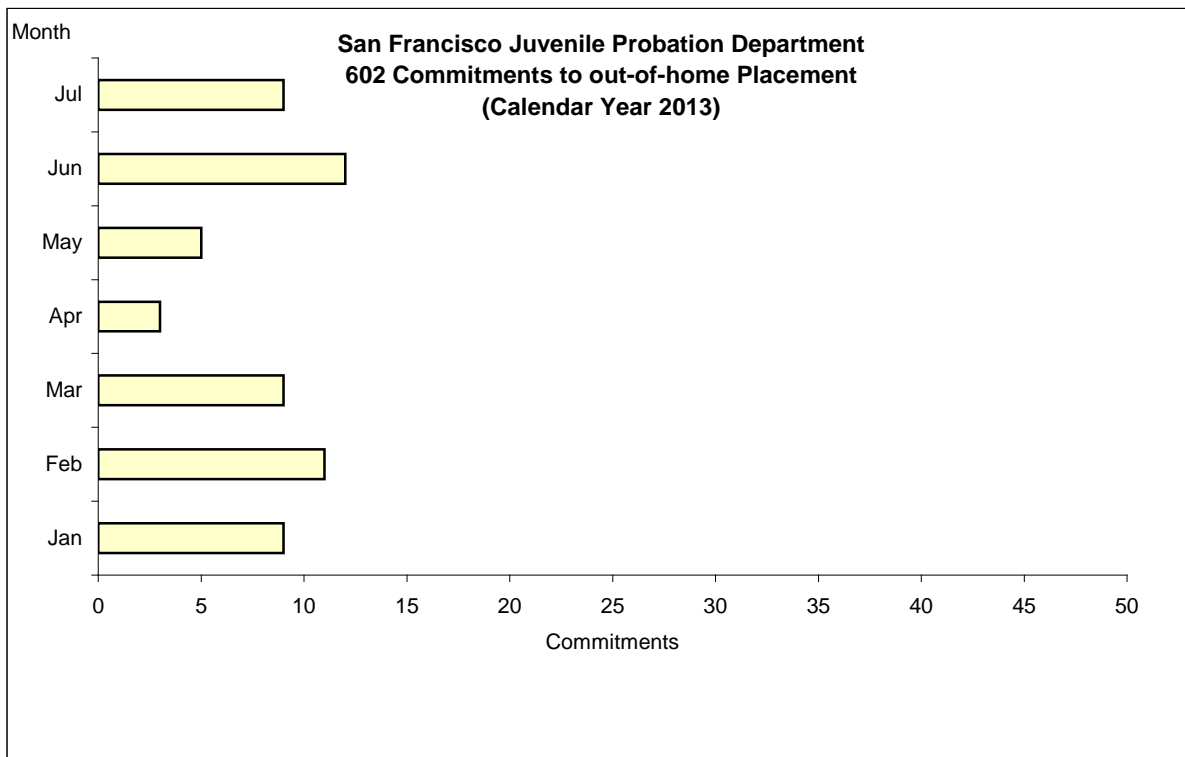


# Out-of-Home Placement<sup>1</sup>

## Commitments of 602's

### Calendar Year 2013

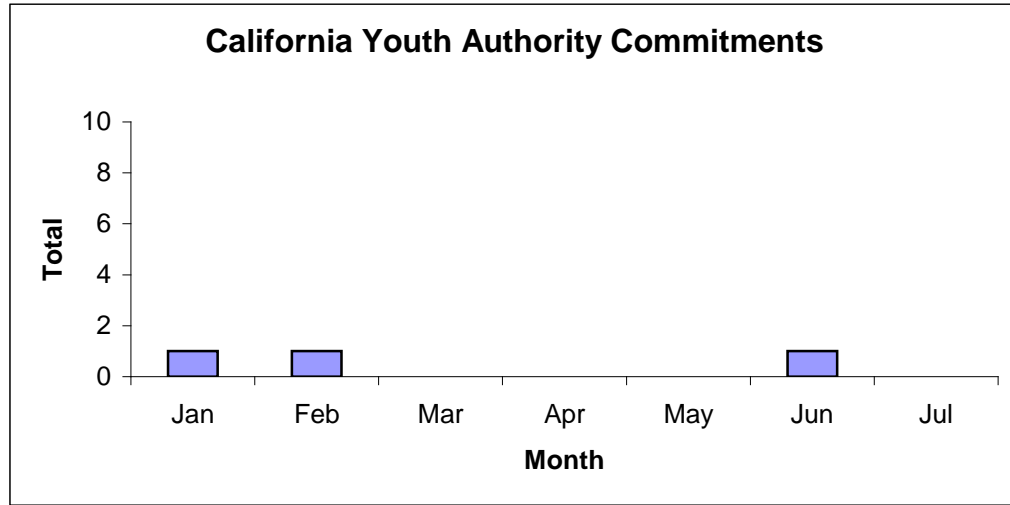
| <b>Commitments</b> | <b>Jan</b> | <b>Feb</b> | <b>Mar</b> | <b>Apr</b> | <b>May</b> | <b>Jun</b> | <b>Jul</b> | <b>Aug</b> | <b>Sep</b> | <b>Oct</b> | <b>Nov</b> | <b>Dec</b> | <b>Total</b> |
|--------------------|------------|------------|------------|------------|------------|------------|------------|------------|------------|------------|------------|------------|--------------|
| 2013               | 9          | 11         | 9          | 3          | 5          | 12         | 9          |            |            |            |            |            | <b>58</b>    |



<sup>1</sup> This report is based on 602 Commitments to out-of-home placements. If there is a 601 commitment, it will show as a footnote here. Figures are regularly updated to include reports from previous reporting periods.

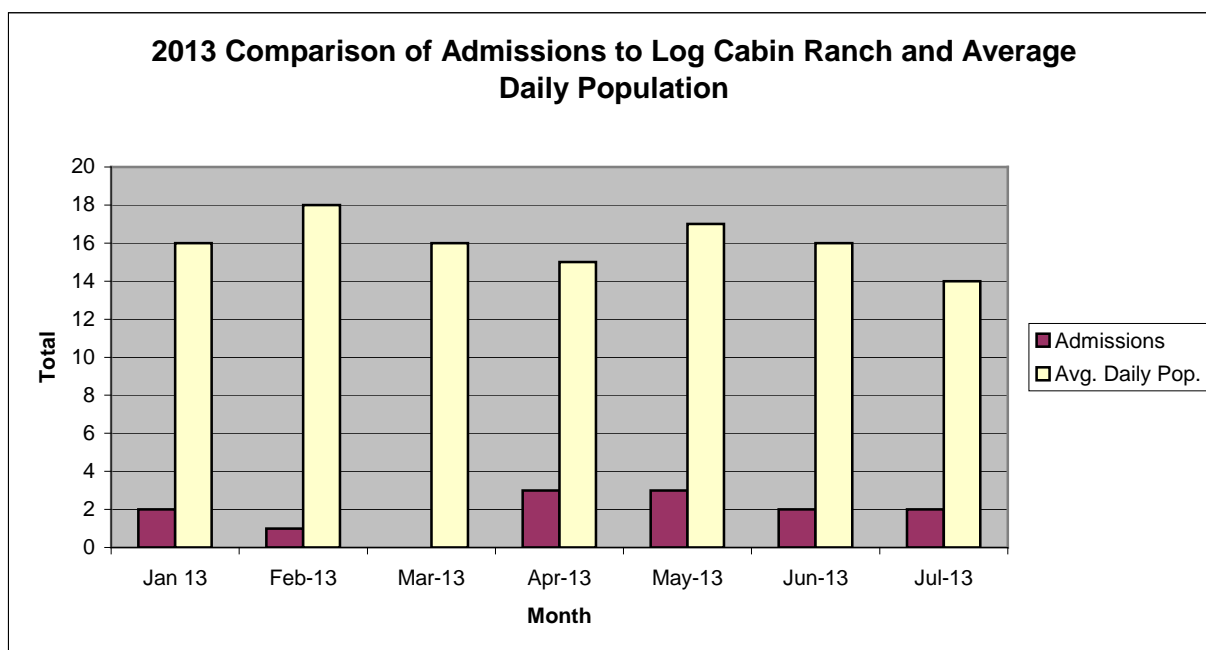
# California Youth Authority Commitments (Calendar Year 2013)

| Commitments | Jan | Feb | Mar | Apr | May | Jun | Jul | Aug | Sep | Oct | Nov | Dec | Total |
|-------------|-----|-----|-----|-----|-----|-----|-----|-----|-----|-----|-----|-----|-------|
| 2013        | 1   | 1   | 0   | 0   | 0   | 1   | 0   |     |     |     |     |     | 3     |



## San Francisco Juvenile Probation Department

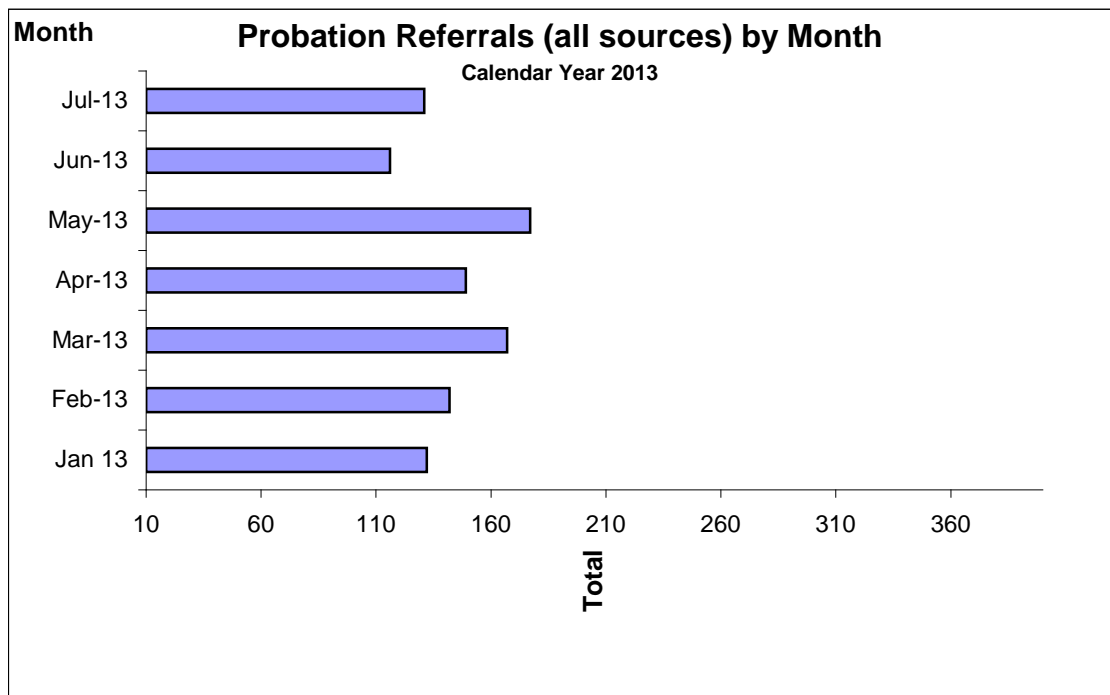
|                 | Jan 13 | Feb-13 | Mar-13 | Apr-13 | May-13 | Jun-13 | Jul-13 | Aug-13 | Sep-13 | Oct-13 | Nov-13 | Dec-13 |
|-----------------|--------|--------|--------|--------|--------|--------|--------|--------|--------|--------|--------|--------|
| Admissions      | 2      | 1      | 0      | 3      | 3      | 2      | 2      |        |        |        |        |        |
| Avg. Daily Pop. | 16     | 18     | 16     | 15     | 17     | 16     | 14     |        |        |        |        |        |



## Probation Referrals by Month Calendar Year 2013

### Probation Referrals (all sources) by Month (602 W&I)

|        |     |
|--------|-----|
| Jan 13 | 132 |
| Feb-13 | 142 |
| Mar-13 | 167 |
| Apr-13 | 149 |
| May-13 | 177 |
| Jun-13 | 116 |
| Jul-13 | 131 |
| Aug-13 |     |
| Sep-13 |     |
| Oct-13 |     |
| Nov-13 |     |
| Dec-13 |     |

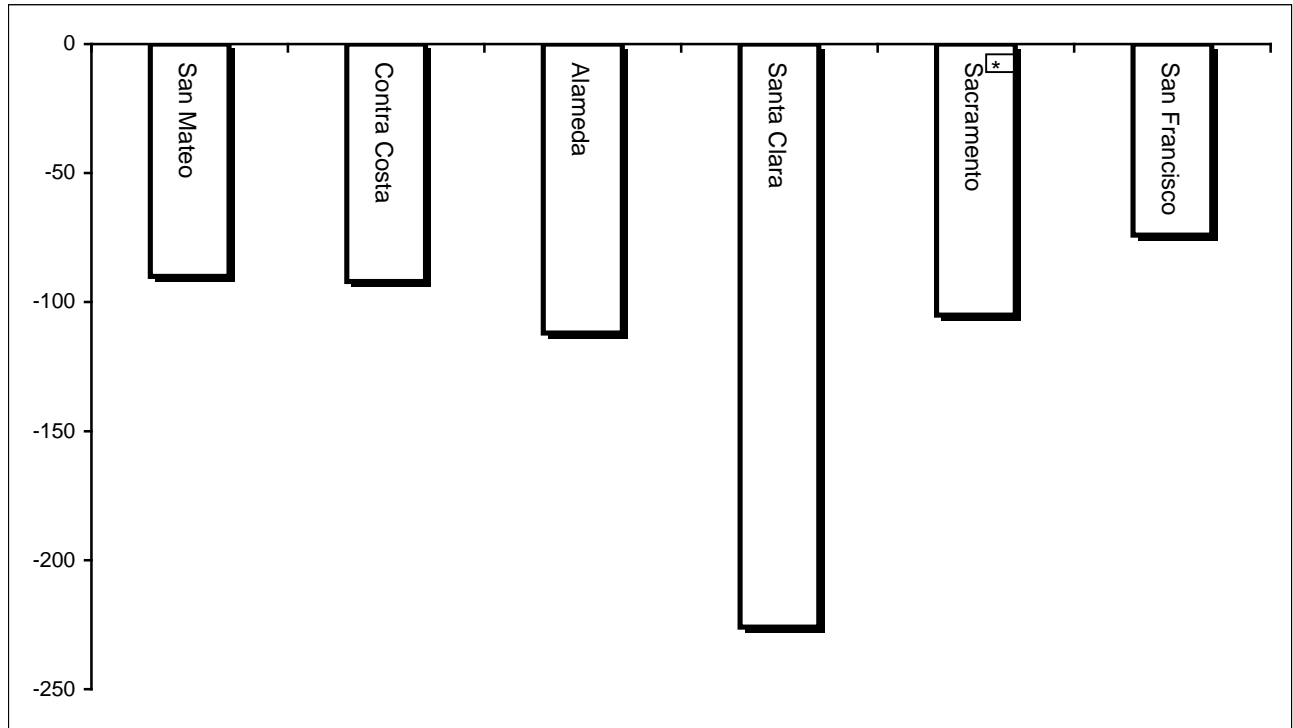


San Francisco Juvenile Probation Department  
Monthly Incident Report Form  
July 2013

|                        |                         |   |                       |                        |                                    |                            |                   |  |                              |   |
|------------------------|-------------------------|---|-----------------------|------------------------|------------------------------------|----------------------------|-------------------|--|------------------------------|---|
| <b>Juvenile Hall</b>   | Battery on Staff        | Injury to Staff Due to Restrain of Minor  | Fights Minor on Minor | Battery Youth on Youth | Attempted Escape                   | AWOL                       | Attempted Suicide | Serious Contraband (Weapon illegal drug) | Use of Force                 | Self Inflicted Injuries                 |
|                        | <b>1</b>                | <b>0</b>                                  | <b>0</b>              | <b>8</b>               | <b>1</b>                           | <b>0</b>                   | <b>0</b>          | <b>3</b>                                 | <b>2</b>                     | <b>1</b>                                |
|                        | Assaults Minor on Minor | Battery on Staff with Injury              | Fire                  | Fight with Injury      | Battery Youth on Youth with Injury | Escape                     | Death             | Suicide                                  | Major Property Destruction   | Use of Restraints (Handcuffs/ Shackles) |
|                        | <b>0</b>                | <b>0</b>                                  | <b>0</b>              | <b>0</b>               | <b>0</b>                           | <b>0</b>                   | <b>0</b>          | <b>0</b>                                 | <b>0</b>                     | <b>1</b>                                |
|                        |                         |   |                       |                        |                                    |                            |                   |  |                              |   |
| <b>Log Cabin Ranch</b> | Battery on Staff        | Injury to Staff due to Restraint of Minor | Fight                 | Battery Youth on Youth | Attempted Escape                   | AWOL                       | Attempted Suicide | Serious Contraband                       | Battery on Staff with Injury | Fire                                    |
|                        | <b>0</b>                | <b>0</b>                                  | <b>0</b>              | <b>0</b>               | <b>1</b>                           | <b>0</b>                   | <b>0</b>          | <b>0</b>                                 | <b>0</b>                     | <b>0</b>                                |
|                        | Fight With Injury       | Battery Youth on Youth with Injury        | Escape                | Death                  | Suicide                            | Major Property Destruction |                   |  |                              |   |
|                        | <b>0</b>                | <b>0</b>                                  | <b>0</b>              | <b>0</b>               | <b>0</b>                           | <b>0</b>                   |                   |  |                              |   |

# Bay Area Resident Juvenile Hall Comparison Over/Under Capacity

August 8<sup>th</sup>, 2013

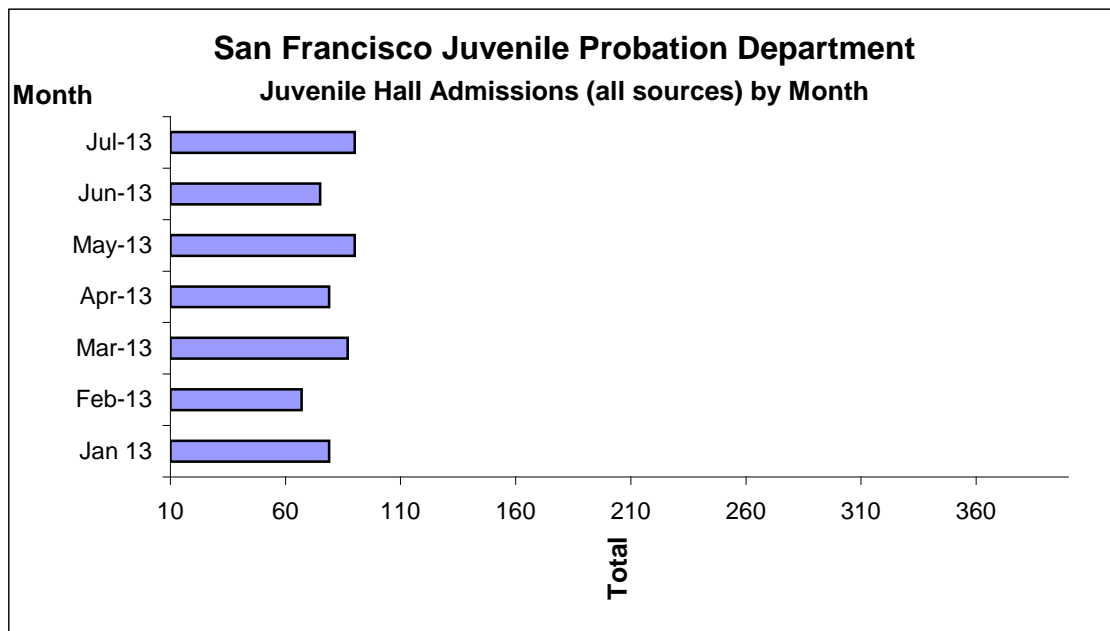


|               | Rated Capacity | Actual | Over/Under Capacity |
|---------------|----------------|--------|---------------------|
| San Mateo     | 180            | 90     | -90                 |
| Contra Costa  | 240            | 148    | -92                 |
| Alameda       | 280            | 168    | -112                |
| Santa Clara   | 360            | 134    | -226                |
| Sacramento    | 308            | 203    | -105                |
| San Francisco | 150            | 76     | -74                 |



## Juvenile Hall Admissions by Month Calendar Year 2013

|        |    |
|--------|----|
| Jan 13 | 79 |
| Feb-13 | 67 |
| Mar-13 | 87 |
| Apr-13 | 79 |
| May-13 | 90 |
| Jun-13 | 75 |
| Jul-13 | 90 |
| Aug-13 |    |
| Sep-13 |    |
| Oct-13 |    |
| Nov-13 |    |
| Dec-13 |    |

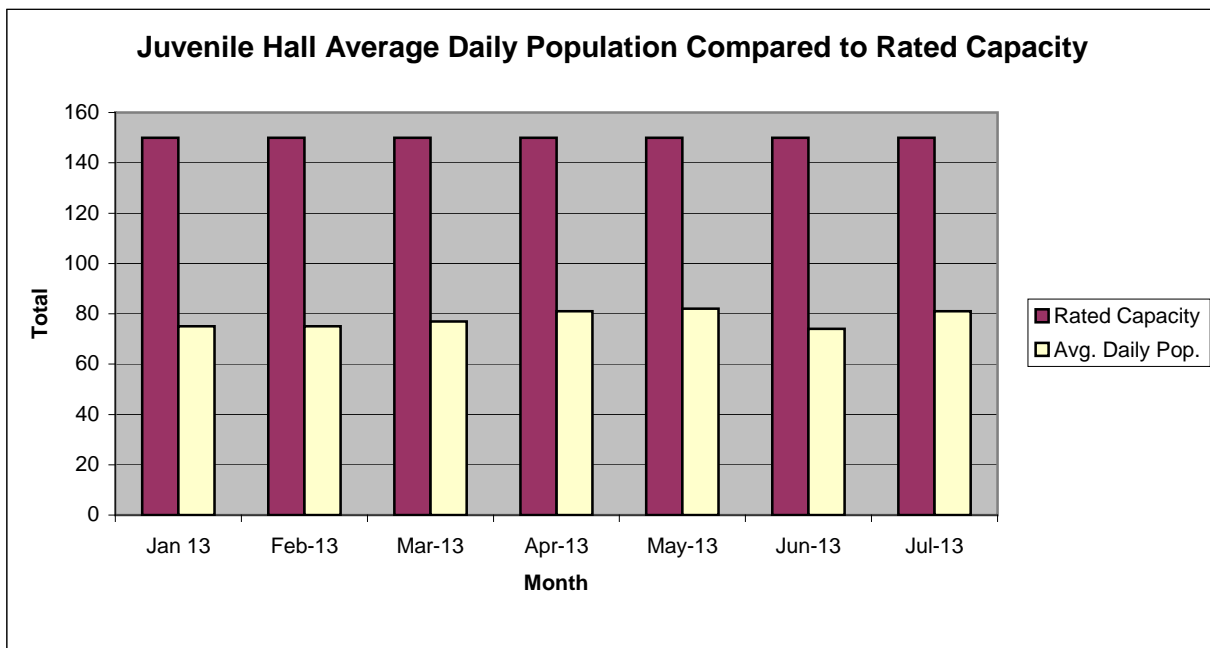


# Characteristics of Juvenile Hall Detainees on July 31<sup>st</sup>, 2013

| ReferralReason           | MF* | Literal   | Count | %       |
|--------------------------|-----|---|-------|---------|
| 187 (A) PC               | F   | MURDER  | 4     | 4.60%   |
| 664 /187 (A) PC          | F   | ATTEMPTED MURDER  | 2     | 2.30%   |
| 211 PC                   | F   | ROBBERY   | 22    | 25.29%  |
| 11352 (A) HS             | F   | TRANSPORT/SELL NARCOTIC/CONTROLLED SUBSTANCE                | 2     | 2.30%   |
| 11351.5 HS               | F   | POSSESS/PURCHASE COCAINE BASE FOR SALE                      | 2     | 2.30%   |
| 459 PC                   | F   | BURGLARY  | 3     | 3.45%   |
| 245 (A)(1) PC            | F   | ASSAULT W/DEADLY WEAPON:NOT F/ARM                           | 5     | 5.75%   |
| 11350 (A) HS             | F   | POSSESS NARCOTIC CONTROLLED SUBSTANCE                       | 1     | 1.15%   |
| 422 PC                   | F   | THREATEN CRIME W/INTENT TO TERRORIZE                        | 1     | 1.15%   |
| 487 (A) PC               | F   | GRAND THEFT:MONEY/LABOR/PROPERTY                            | 4     | 4.60%   |
| 487 (C) PC               | F   | GRAND THEFT FROM PERSON                                     | 3     | 3.45%   |
| 10851 (A) VC             | F   | TAKE VEHICLE W/O OWNER'S CONSENT/VEHICLE THEFT              | 1     | 1.15%   |
| 496 (A) PC               | F   | RECEIVE/ETC KNOWN STOLEN PROPERTY                           | 1     | 1.15%   |
| 25400 (A)(2) PC          | F   | CARRY CONCEALED WEAPON ON PERSON                            | 1     | 1.15%   |
| 594 (A)(2) PC            | F   | VANDALISM:DAMAGE PROPERTY                                   | 1     | 1.15%   |
| 594 (B)(1) PC            | F   | VANDALISM (\$400 OR MORE)                                   | 1     | 1.15%   |
| 148 (A)(1) PC            | M   | OBSTRUCT/RESIST/ETC PUBLIC/PEACE OFFICER/EMERGENCY MED TECH | 3     | 3.45%   |
| 459 PC                   | M   | BURGLARY  | 1     | 1.15%   |
| 871 (A) WI               | M   | MINOR ATTEMPT ESCAPE/ESCAPE COUNTY FACILITY                 | 1     | 1.15%   |
| 484 (A) PC               | M   | PETTY THEFT   | 1     | 1.15%   |
| 777 (A)(2) WI            | M   | FAIL TO OBEY ORDER OF JUVENILE COURT:602 WI                 | 4     | 4.60%   |
| 628.1 WI                 | M   | VIOLATION(S) OF HOME SUPERVISION CONDITION                  | 6     | 6.90%   |
| 737 WI                   | M   | CHANGE OF PLACEMENT/PLACEMENT FAILURE                       | 1     | 1.15%   |
| BENCH WARRANT            |     | BENCH WARRANT   | 1     | 1.15%   |
| WRNT602                  |     | ARREST WARRANT  | 11    | 12.64%  |
| CTORD 602                |     | COURT ORDER   | 4     | 4.60%   |
| *M=Misdemeanor; F=Felony |     | Total   | 87    | 100.00% |

## San Francisco Juvenile Probation Department

|                 | Jan 13 | Feb-13 | Mar-13 | Apr-13 | May-13 | Jun-13 | Jul-13 | Aug-13 | Sep-13 | Oct-13 | Nov-13 | Dec-13 |
|-----------------|--------|--------|--------|--------|--------|--------|--------|--------|--------|--------|--------|--------|
| Rated Capacity  | 150    | 150    | 150    | 150    | 150    | 150    | 150    |        |        |        |        |        |
| Avg. Daily Pop. | 75     | 75     | 77     | 81     | 82     | 74     | 81     |        |        |        |        |        |



## Juvenile Hall Average Length of Stay

For the Month of July 2013

### <sup>1</sup>Released

| <b>Range of Days</b>   | <i>1-10 days</i> | <i>11-20 days</i> | <i>21-30 days</i> | <i>30 or more days</i> | <b>Total</b> |
|------------------------|------------------|-------------------|-------------------|------------------------|--------------|
| # of Youth Released    | 31               | 18                | 8                 | 24                     | 81           |
| % of Population        | 38.27%           | 22.22%            | 9.88%             | 29.63%                 | 100%         |
| # of Days              | 110              | 265               | 200               | 1,243                  | 1,818        |
| % of Total Days        | 6.05%            | 14.58%            | 11.00%            | 68.37%                 | 100%         |
| Average Length of Stay | 3.55             | 14.72             | 25.00             | 51.79                  | 22.44        |

### <sup>2</sup>In Custody

| <b>Range of Days</b>   | <i>1-10 days</i> | <i>11-20 days</i> | <i>21-30 days</i> | <i>30 or more days</i> | <b>Total</b> |
|------------------------|------------------|-------------------|-------------------|------------------------|--------------|
| # of Youth Detained    | 29               | 15                | 10                | 33                     | 87           |
| % of Population        | 33.33%           | 17.24%            | 11.49%            | 37.93%                 | 100%         |
| # of Days              | 161              | 228               | 248               | 3,898                  | 4,535        |
| % of Total Days        | 3.55%            | 5.03%             | 5.47%             | 85.95%                 | 100%         |
| Average Length of Stay | 5.55             | 15.20             | 24.80             | 118.12                 | 52.13        |

Notes: Less than one day of stay is calculated as one day.

<sup>1</sup>Length of stay is calculated according to release date for those who are released.

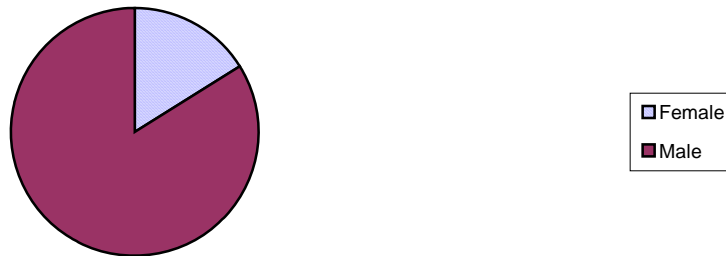
<sup>2</sup>For those still in custody, length of stay is calculated at the last day of the month.

## **Section III**

# **Demographics**

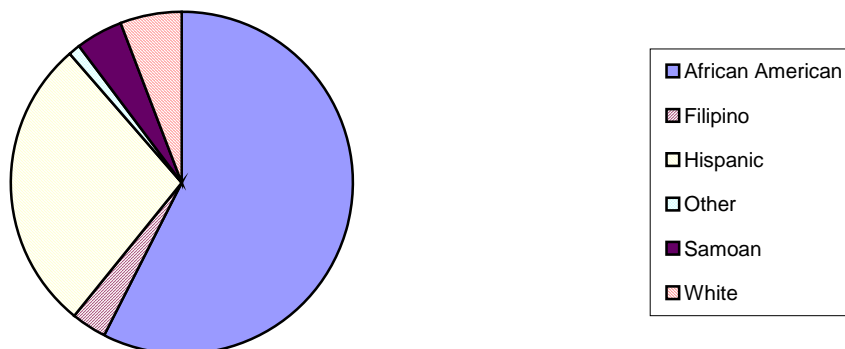
| Gender       | Frequency | Percent        |
|--------------|-----------|----------------|
| Female       | 14        | 16.09%         |
| Male         | 73        | 83.91%         |
| <b>Total</b> | <b>87</b> | <b>100.00%</b> |

**Demographic Characteristics  
Of Juvenile Hall Detainees on 7/31/13 by Gender**

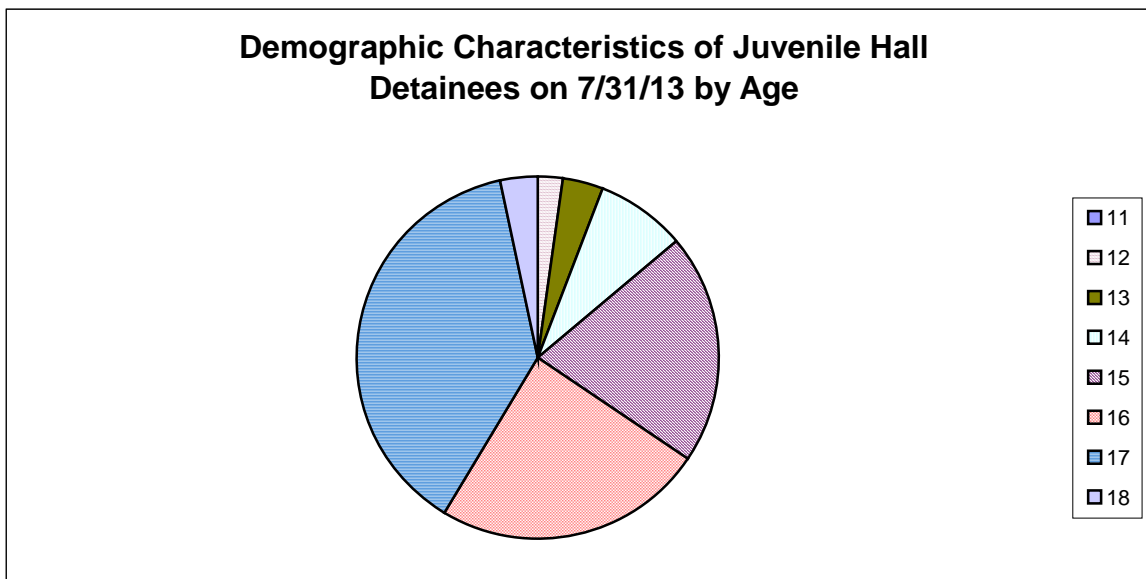


| Race/Ethnic Origin | Frequency | Percent        |
|--------------------|-----------|----------------|
| African American   | 50        | 57.47%         |
| Filipino           | 3         | 3.45%          |
| Hispanic           | 24        | 27.59%         |
| Other              | 1         | 1.15%          |
| Samoan             | 4         | 4.60%          |
| White              | 5         | 5.75%          |
| <b>Total</b>       | <b>87</b> | <b>100.00%</b> |

**Demographic Characteristics of Juvenile Hall Detainees on  
7/31/13 by Race**

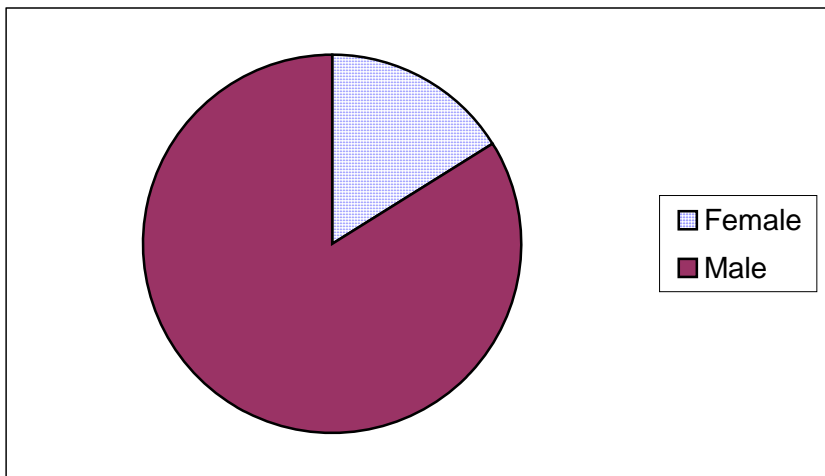


| Age          | Frequency | Percent        |
|--------------|-----------|----------------|
| 11           | 0         | 0.00%          |
| 12           | 2         | 2.30%          |
| 13           | 3         | 3.45%          |
| 14           | 7         | 8.05%          |
| 15           | 18        | 20.69%         |
| 16           | 21        | 24.14%         |
| 17           | 33        | 37.93%         |
| 18           | 3         | 3.45%          |
| <b>Total</b> | <b>87</b> | <b>100.00%</b> |



Demographic Characteristics of Juvenile Hall Detainees  
on 7/31/2013  
Age by Gender

| Age          | Female        | Male          | Total          |                |
|--------------|---------------|---------------|----------------|----------------|
| 11           | 0             | 0             | 0              | 0.00%          |
| 12           | 0             | 2             | 2              | 2.30%          |
| 13           | 1             | 2             | 3              | 3.45%          |
| 14           | 4             | 3             | 7              | 8.05%          |
| 15           | 1             | 17            | 18             | 20.69%         |
| 16           | 4             | 17            | 21             | 24.14%         |
| 17           | 4             | 29            | 33             | 37.93%         |
| 18 and over  | 0             | 3             | 3              | 3.45%          |
| <b>Total</b> | <b>14</b>     | <b>73</b>     | <b>87</b>      | <b>100.00%</b> |
|              | <b>16.09%</b> | <b>83.91%</b> | <b>100.00%</b> |                |





Demographic Characteristics  
Of Juvenile Hall Detainees on July 31<sup>st</sup>, 2013

---

| <b>Geographic Residence of Youth</b> | <b>Count</b> | <b>%</b>      |
|--------------------------------------|--------------|---------------|
| Richmond                             | 1            | 1.1%          |
| Marina                               | 0            | 0.0%          |
| North of Market/Downtown             | 1            | 1.1%          |
| Treasure Island/Yerba Buena Island   | 2            | 2.3%          |
| Western Addition                     | 5            | 5.7%          |
| South of Market/Tenderloin           | 1            | 1.1%          |
| Sunset                               | 0            | 0.0%          |
| Haight Ashbury/Castro/Upper Market   | 1            | 1.1%          |
| Inner Mission                        | 6            | 6.9%          |
| Potrero                              | 4            | 4.6%          |
| Parkside                             | 1            | 1.1%          |
| Ingleside (West of Twin Peaks)       | 5            | 5.7%          |
| Outer Mission                        | 17           | 19.5%         |
| Bayview                              | 19           | 21.8%         |
| Non-San Francisco and Unavailable    | 24           | 27.6%         |
| <b>Total</b>                         | <b>87</b>    | <b>100.0%</b> |

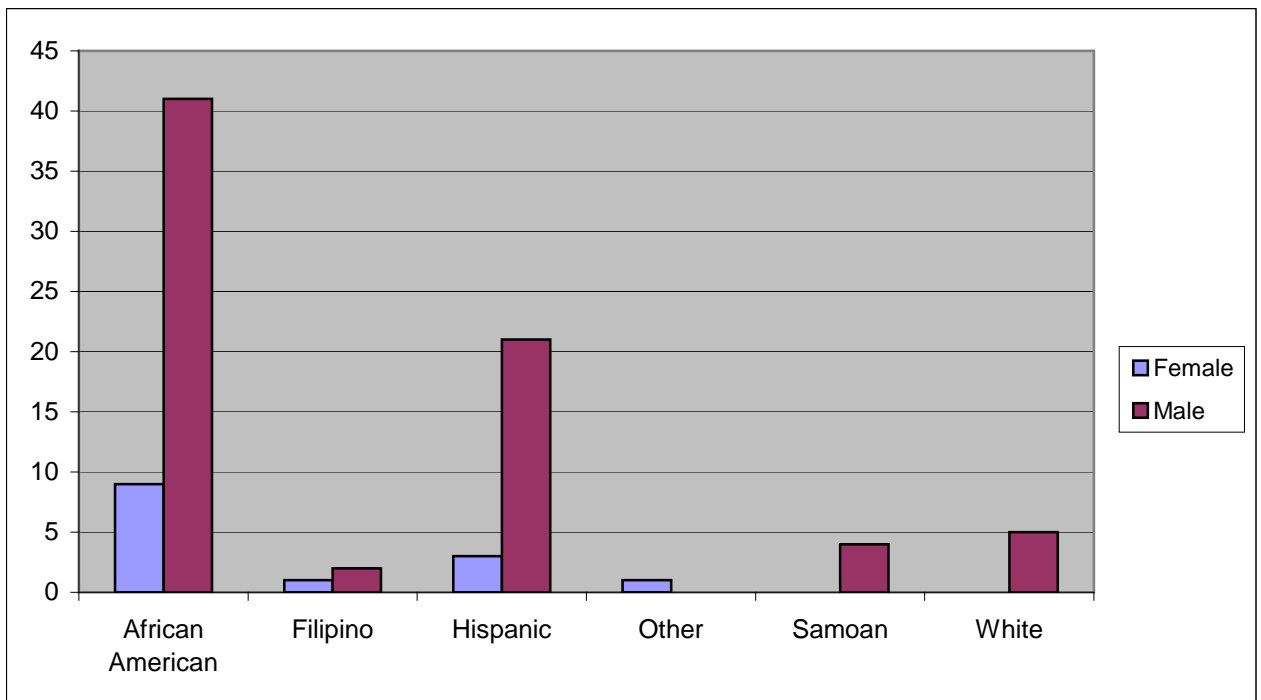
| <b>Non-San Francisco and Unavailable</b> | <b>Count</b> | <b>%</b>      |
|--|--------------|---------------|
| Daly City                                | 1            | 4.2%          |
| East Palo Alto                           | 1            | 4.2%          |
| Grass Valley                             | 2            | 8.3%          |
| Honduras                                 | 1            | 4.2%          |
| Oakland                                  | 5            | 20.8%         |
| Richmond                                 | 1            | 4.2%          |
| Riverside                                | 1            | 4.2%          |
| Sacramento                               | 1            | 4.2%          |
| South San Francisco                      | 1            | 4.2%          |
| Vacaville                                | 1            | 4.2%          |
| Vallejo                                  | 4            | 16.7%         |
| Unavailable                              | 5            | 20.8%         |
| <b>Total</b>                             | <b>24</b>    | <b>100.0%</b> |

Demographic Characteristics  
Of Juvenile Hall Detainees on July 31<sup>st</sup>, 2013

---

**Race/Ethnic Origin by Gender**

| Race/Ethnicity   | Female    | Male      | Total     | %             |
|------------------|-----------|-----------|-----------|---------------|
| African American | 9         | 41        | 50        | 57.5%         |
| Filipino         | 1         | 2         | 3         | 3.4%          |
| Hispanic         | 3         | 21        | 24        | 27.6%         |
| Other            | 1         | 0         | 1         | 1.1%          |
| Samoan           | 0         | 4         | 4         | 4.6%          |
| White            | 0         | 5         | 5         | 5.7%          |
| <b>Total</b>     | <b>14</b> | <b>73</b> | <b>87</b> | <b>100.0%</b> |

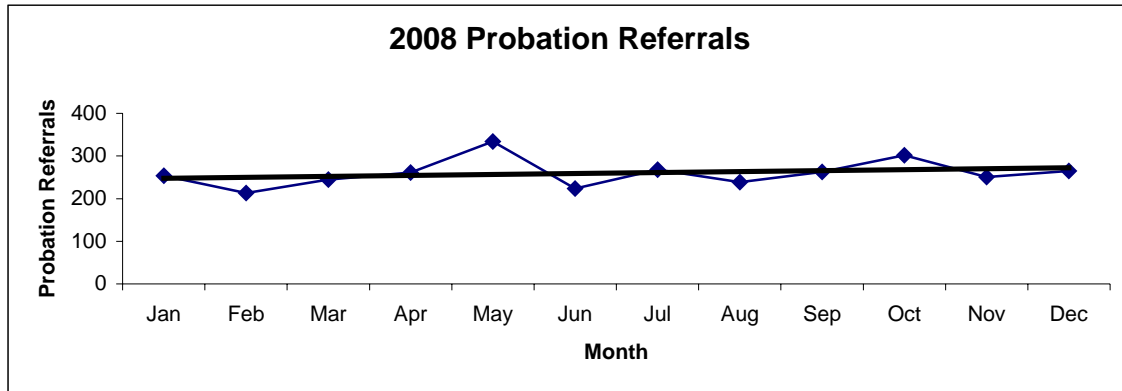


# **Section IV**

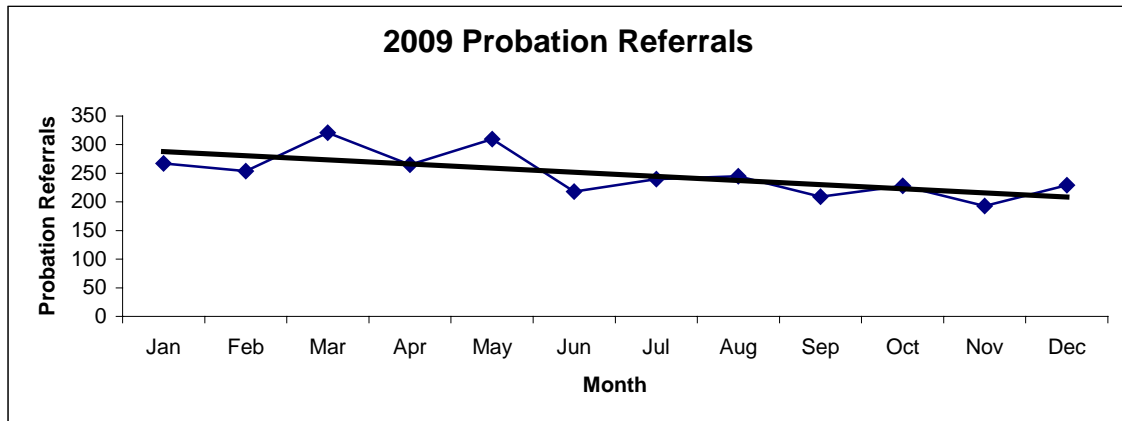
## **Historical Information**

San Francisco Juvenile Probation Department  
**Probation Referrals (all sources) By Month**  
 (2008-2010)

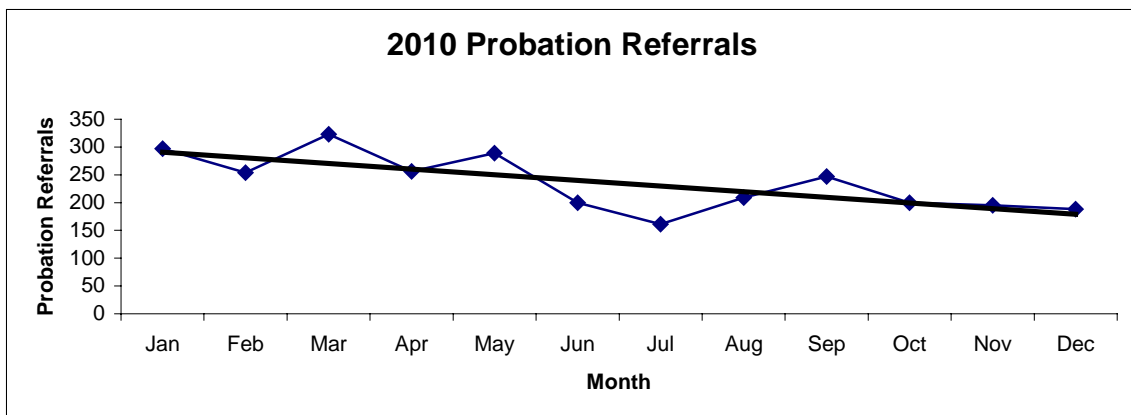
| 2008 Probation Referrals | Jan | Feb | Mar | Apr | May | Jun | Jul | Aug | Sep | Oct | Nov | Dec | Total       |
|--------------------------|-----|-----|-----|-----|-----|-----|-----|-----|-----|-----|-----|-----|-------------|
|                          | 254 | 213 | 245 | 261 | 334 | 224 | 268 | 239 | 263 | 302 | 251 | 265 | <b>3119</b> |



| 2009 Probation Referrals | Jan | Feb | Mar | Apr | May | Jun | Jul | Aug | Sep | Oct | Nov | Dec | Total       |
|--------------------------|-----|-----|-----|-----|-----|-----|-----|-----|-----|-----|-----|-----|-------------|
|                          | 267 | 254 | 321 | 265 | 310 | 218 | 240 | 245 | 209 | 228 | 193 | 229 | <b>2979</b> |

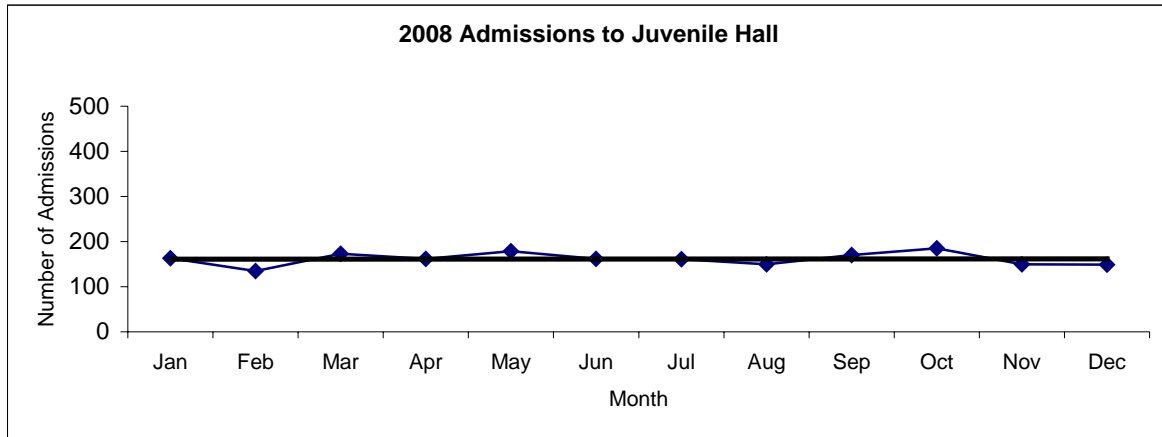


| 2010 Probation Referrals | Jan | Feb | Mar | Apr | May | Jun | Jul | Aug | Sep | Oct | Nov | Dec | Total       |
|--------------------------|-----|-----|-----|-----|-----|-----|-----|-----|-----|-----|-----|-----|-------------|
|                          | 297 | 254 | 323 | 256 | 289 | 200 | 161 | 209 | 247 | 200 | 195 | 188 | <b>2819</b> |

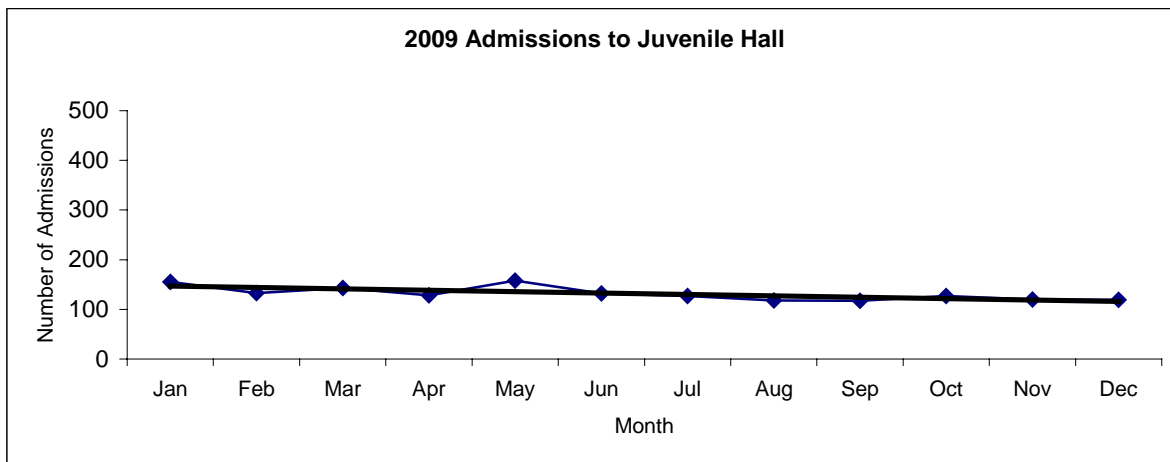


**San Francisco Juvenile Probation**  
**Juvenile Hall Admissions By Month**  
(2008-2010)

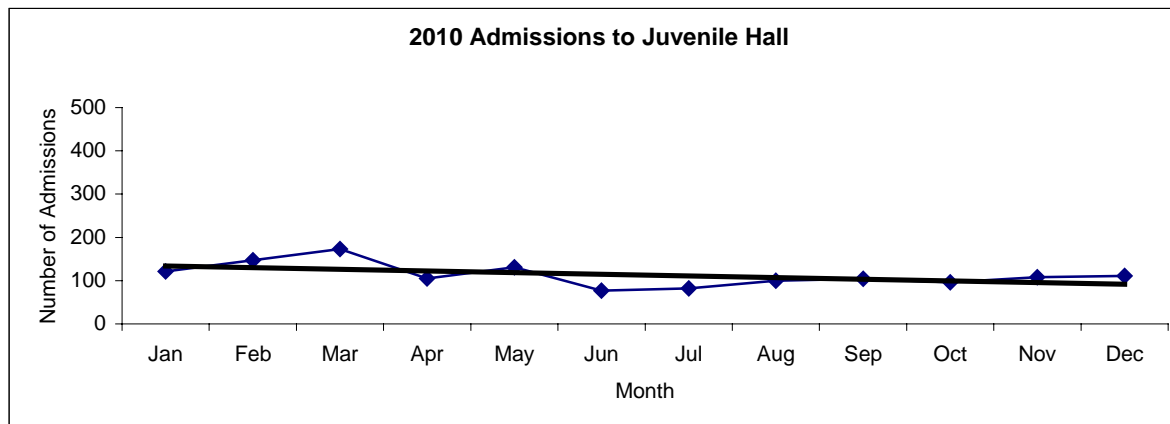
| 2008 Admissions | Jan | Feb | Mar | Apr | May | Jun | Jul | Aug | Sep | Oct | Nov | Dec | Total       |
|-----------------|-----|-----|-----|-----|-----|-----|-----|-----|-----|-----|-----|-----|-------------|
|                 | 163 | 135 | 173 | 162 | 179 | 162 | 161 | 150 | 170 | 185 | 150 | 149 | <b>1939</b> |



| 2009 Admissions | Jan | Feb | Mar | Apr | May | Jun | Jul | Aug | Sep | Oct | Nov | Dec | Total       |
|-----------------|-----|-----|-----|-----|-----|-----|-----|-----|-----|-----|-----|-----|-------------|
|                 | 155 | 133 | 143 | 128 | 158 | 132 | 127 | 118 | 117 | 127 | 120 | 119 | <b>1577</b> |

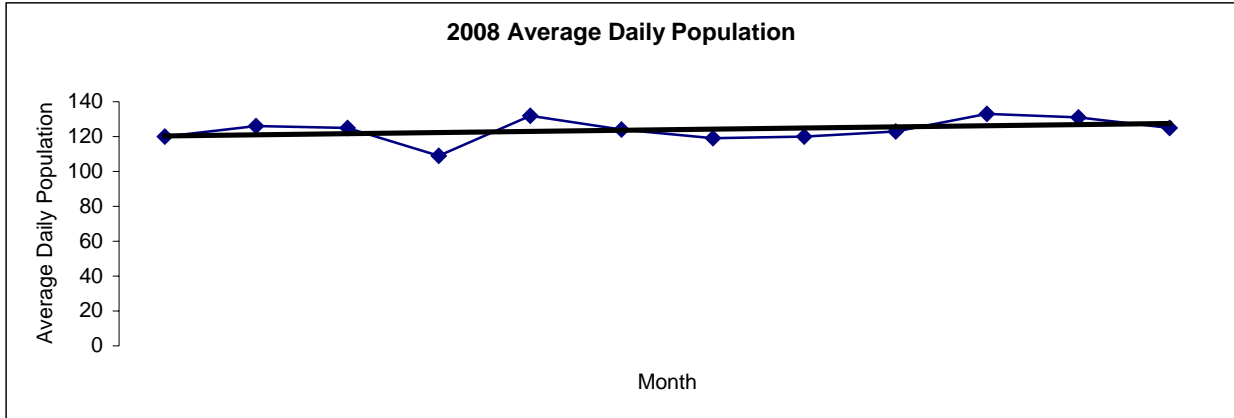


| 2010 Admissions | Jan | Feb | Mar | Apr | May | Jun | Jul | Aug | Sep | Oct | Nov | Dec | Total       |
|-----------------|-----|-----|-----|-----|-----|-----|-----|-----|-----|-----|-----|-----|-------------|
|                 | 121 | 147 | 173 | 105 | 131 | 77  | 82  | 100 | 104 | 96  | 108 | 111 | <b>1355</b> |

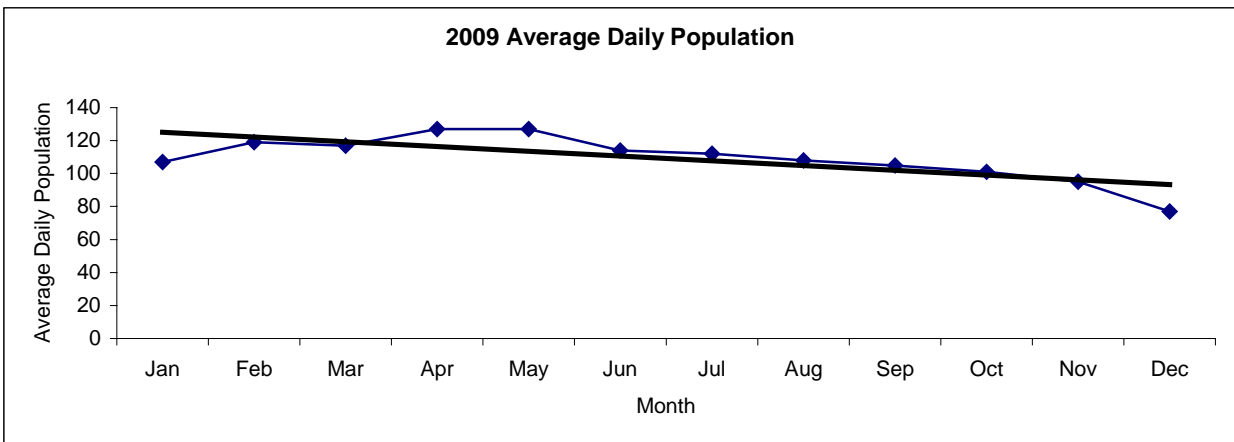


San Francisco Juvenile Probation  
**Juvenile Hall Average Daily Population By Month**  
 (2008-2010)

| 2008 Avg. Daily Pop. | Jan | Feb | Mar | Apr | May | Jun | Jul | Aug | Sep | Oct | Nov | Dec | Total      |
|----------------------|-----|-----|-----|-----|-----|-----|-----|-----|-----|-----|-----|-----|------------|
|                      | 120 | 126 | 125 | 109 | 132 | 124 | 119 | 120 | 123 | 133 | 131 | 125 | <b>124</b> |



| 2009 Avg. Daily Pop. | Jan | Feb | Mar | Apr | May | Jun | Jul | Aug | Sep | Oct | Nov | Dec | Total      |
|----------------------|-----|-----|-----|-----|-----|-----|-----|-----|-----|-----|-----|-----|------------|
|                      | 107 | 119 | 117 | 127 | 127 | 114 | 112 | 108 | 105 | 101 | 95  | 77  | <b>109</b> |



| 2010 Avg. Daily Pop. | Jan | Feb | Mar | Apr | May | Jun | Jul | Aug | Sep | Oct | Nov | Dec | Total     |
|----------------------|-----|-----|-----|-----|-----|-----|-----|-----|-----|-----|-----|-----|-----------|
|                      | 85  | 104 | 110 | 107 | 99  | 97  | 90  | 88  | 90  | 84  | 79  | 92  | <b>94</b> |

