

# City and County of San Francisco



Juvenile Probation Department

---

## **Monthly Report for September 2013**

Presented to the Juvenile Probation Commission

October 9<sup>th</sup>, 2013

Allen A. Nance  
Chief Probation Officer

Prepared by Jose Luis Perla  
Information Technology Director  
(415) 753-7686  
[jose.perla@sfgov.org](mailto:jose.perla@sfgov.org)

# Table of Contents

---

## **Section I Summary Reports**

Juvenile Hall, Log Cabin Ranch Summary Statistics .....	1
Probation Services Summary and California Youth Authority Statistics .....	2
Active Cases by Units .....	3

## **Section II Current Month General Detail**

Probation Referrals, Juvenile Admissions And Average Daily Population .....	4
Juvenile Hall Admissions and Average Daily Population .....	5
Commitments to out-of-home placement .....	6
Commitments to California Youth Authority .....	7
Log Cabin Ranch Admissions and Average Daily Population .....	8
Probation Referrals .....	9
Juvenile Hall And Log Cabin Ranch Incident Report .....	10
Bay Area Resident Juvenile Hall Comparison .....	11
Juvenile Hall Admissions .....	12
Juvenile Hall Detainees by Detention Reason .....	13
Juvenile Hall Average Daily Population by Rated Capacity .....	14
Juvenile Hall Average Length of Stay .....	15

## **Section III Demographics**

Juvenile Hall Detainees by Sex and Race/Ethnic Origin .....	16
Juvenile Hall Detainees by Age .....	17
Juvenile Hall Detainees by Age and Sex .....	18
Juvenile Hall Detainees by Geographic Residence of Youth .....	19
Juvenile Hall Detainees by Race/Ethnic Origin and Sex .....	20

## **Section IV**

### **Historical Information**

2004-2006 Probation Referrals .....	21
2004-2006 Juvenile Hall Admissions .....	22
2004-2006 Juvenile Hall Average Daily Population .....	23

---

# **Section I**

## **Summary Reports**

## Summary Report for the Month of September 2013

<b>Juvenile Hall</b>	<i>August 2012</i>	<i>August 2013</i>	<i>September 2012</i>	<i>September 2013</i>	<i>YTD 2012</i>	<i>YTD 2013</i>
Admissions	75	74	63	55	686	696
Average Daily Population	74	74	72	76	74	77
Average Length of Stay (Releases)	31	31.75	27.79	22.06	28.25	28.04
Average Length of Stay (In Custody)	57.47	53.03	63.08	70.63	67.78	61.41
Releases	75	81	62	63	691	849
<b>Log Cabin Ranch</b>						
Admissions:						
First Time Commitments	3	1	0	2	25	16
Recommitments	0	0	0	0	0	0
<i>Total</i>	<b>3</b>	<b>1</b>	<b>0</b>	<b>2</b>	<b>25</b>	<b>16</b>
Releases:						
Graduated	0	0	0	0	1	0
Escape	0	0	0	0	1	1
Other releases	8	5	2	0	26	16
<i>Total</i>	<b>8</b>	<b>5</b>	<b>2</b>	<b>0</b>	<b>28</b>	<b>17</b>
Average Daily Population	21	10	23	10	18	15

## Summary Report for the Month of September 2013

<b>Probation Services</b>	<i>August 2013</i>	<i>September 2013</i>	<i>Year To Date 2013</i>
Probation Referrals	117	94	1225
Total Petitions including violation of probation	47	56	607
Selected Court Dispositions:			
California Youth Authority	0	0	3
Log Cabin Ranch	3	2	16
Out of Home Placement	12	6	76
Ward Probation	25	21	183
Non-Ward Probation (725a WI)	5	4	34
Informal Probation (654 WI)	7	10	62
Violation of Probation Petitions Filed	9	13	84
<b>California Youth Authority Monthly Count</b> <b>San Francisco County Juvenile Court Cases</b> September 30 <sup>th</sup> , 2013			
Category	Institutions	Parole	
<b>Males</b>			
White	0	0	
Hispanic	2	0	
African American	4	0	
Asian	1	0	
Native American	0	0	
Filipino	0	0	
Pacific Islander	0	0	
Other	0	0	
<b>Total</b>	<b>7</b>	<b>0</b>	
<b>Females</b>			
White	0	0	
Hispanic	0	0	
African American	0	0	
Asian	0	0	
Native American	0	0	
Filipino	0	0	
Pacific Islander	0	0	
Other	0	0	
<b>Total</b>	<b>0</b>	<b>0</b>	
<b>Grand Total</b>	<b>7</b>	<b>0</b>	

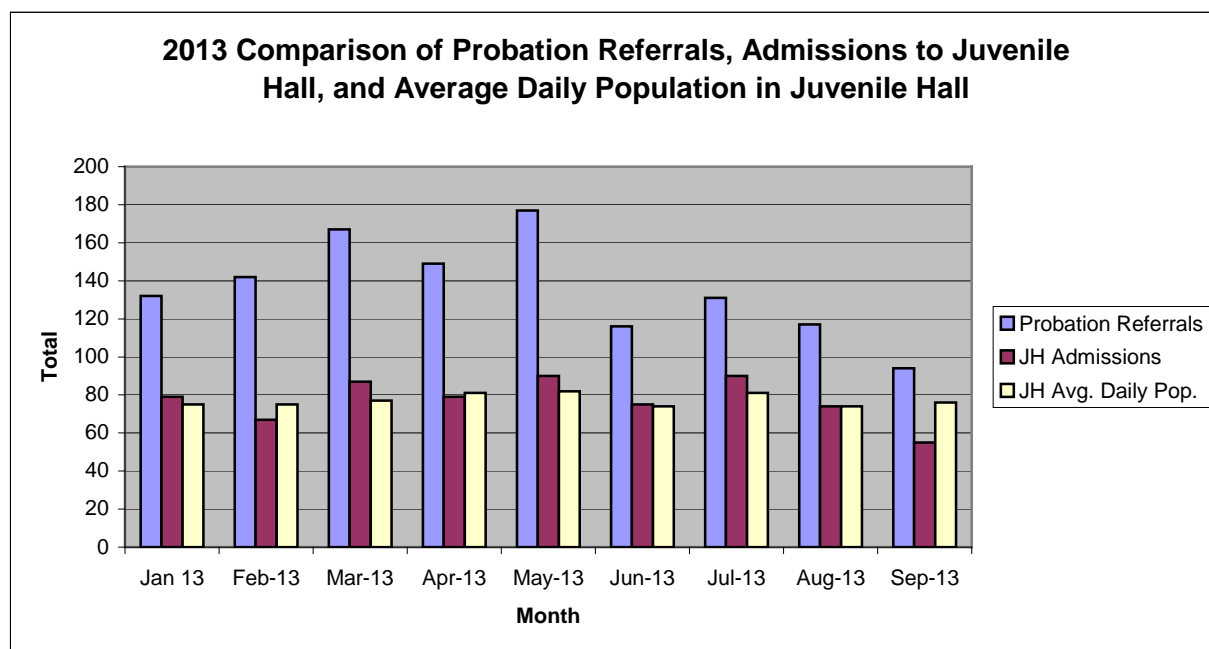
## Summary Report for the Month of September 2013

<b>Probation Services</b>			
<b>Active Cases by Units</b>	August 2013	September 2013	September Average # Youth by PO
CARC	127	122	122
Intake Green (Custody Screening Investigation)	77	76	11
Intake Gold (Probation Services 1)	134	139	20
Family Integrated Treatment Services (FITS) PS2	128	127	18
Serious Offenders Program (Probation Services 3)	151	152	22
Out-of-home Placement (Probation Services 4)	151	151	25
Juvenile Collaborative Re-entry Unit (JCRU)	49	44	15
<i>Total</i>	<b>817</b>	<b>811</b>	<b>33</b>
Total Active Intake Cases	364	358	
Total Probation/Supervision Cases	453	453	
<i>Total</i>	<b>817</b>	<b>811</b>	

**Section II**  
**Current Month**  
**General Detail**

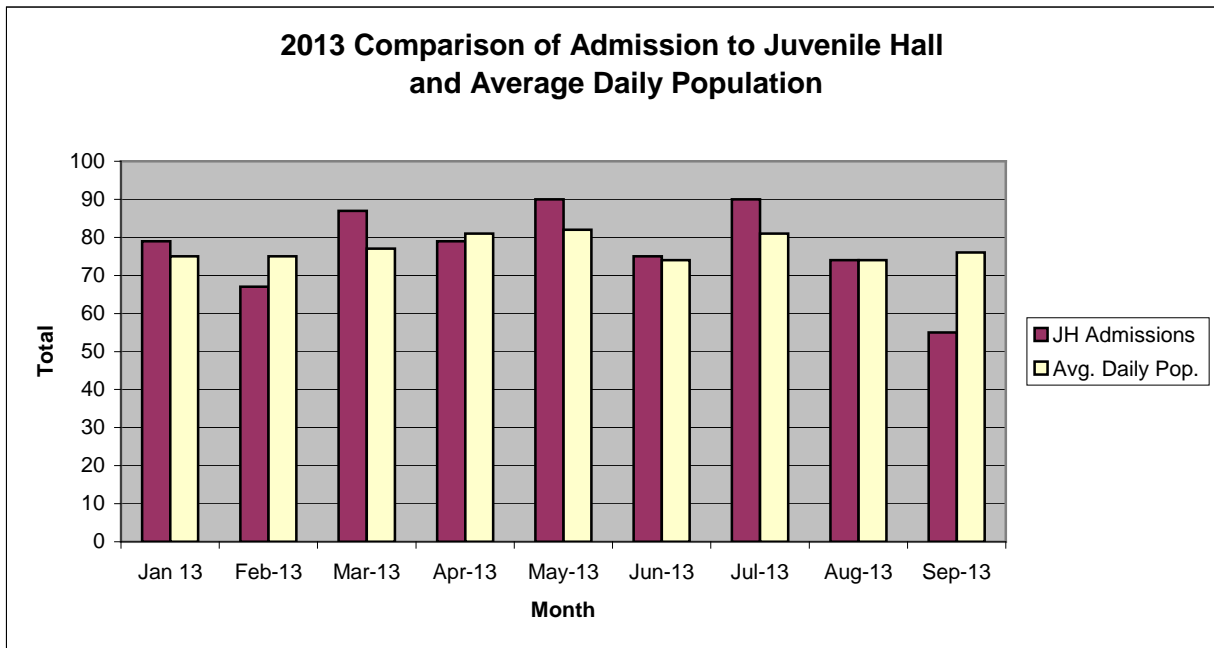
## San Francisco Juvenile Probation Department

	Jan 13	Feb-13	Mar-13	Apr-13	May-13	Jun-13	Jul-13	Aug-13	Sep-13	Oct-13	Nov-13	Dec-13
Probation Referrals	132	142	167	149	177	116	131	117	94			
JH Admissions	79	67	87	79	90	75	90	74	55			
JH Avg. Daily Pop.	75	75	77	81	82	74	81	74	76			



## San Francisco Juvenile Probation Department

	Jan 13	Feb-13	Mar-13	Apr-13	May-13	Jun-13	Jul-13	Aug-13	Sep-13	Oct-13	Nov-13	Dec-13
JH Admissions	79	67	87	79	90	75	90	74	55			
Avg. Daily Pop.	75	75	77	81	82	74	81	74	76			

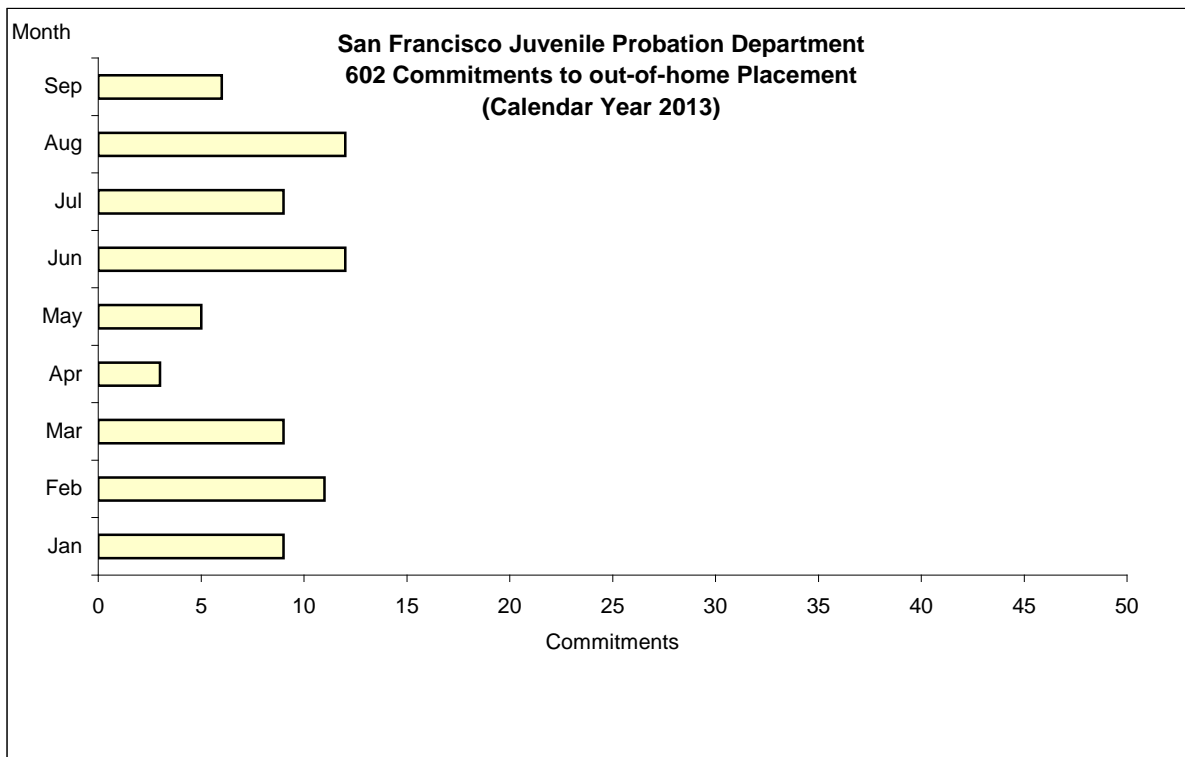


# Out-of-Home Placement<sup>1</sup>

## Commitments of 602's

### Calendar Year 2013

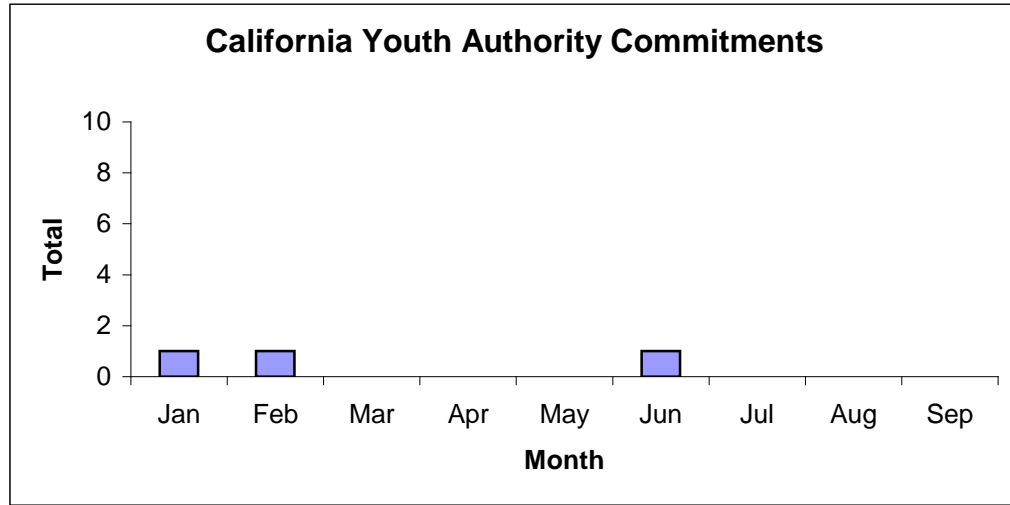
<b>Commitments</b>	<b>Jan</b>	<b>Feb</b>	<b>Mar</b>	<b>Apr</b>	<b>May</b>	<b>Jun</b>	<b>Jul</b>	<b>Aug</b>	<b>Sep</b>	<b>Oct</b>	<b>Nov</b>	<b>Dec</b>	<b>Total</b>
2013	9	11	9	3	5	12	9	12	6				<b>76</b>



<sup>1</sup> This report is based on 602 Commitments to out-of-home placements. If there is a 601 commitment, it will show as a footnote here. Figures are regularly updated to include reports from previous reporting periods.

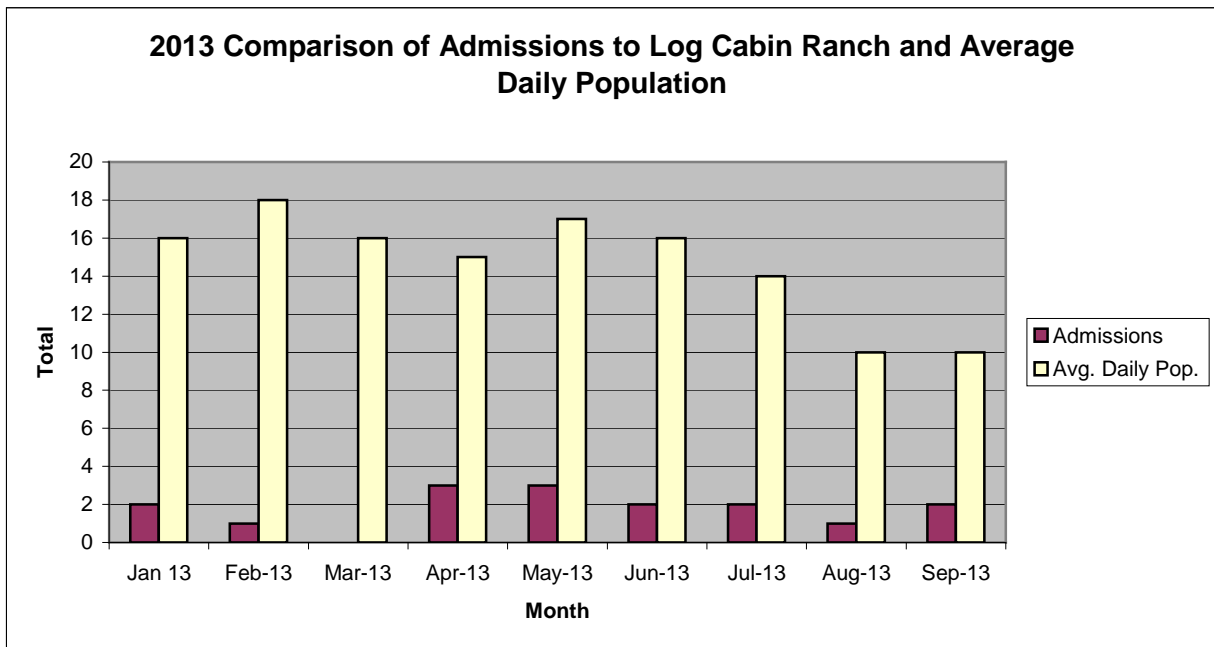
# California Youth Authority Commitments (Calendar Year 2013)

Commitments	Jan	Feb	Mar	Apr	May	Jun	Jul	Aug	Sep	Oct	Nov	Dec	Total
2013	1	1	0	0	0	1	0	0	0				3



## San Francisco Juvenile Probation Department

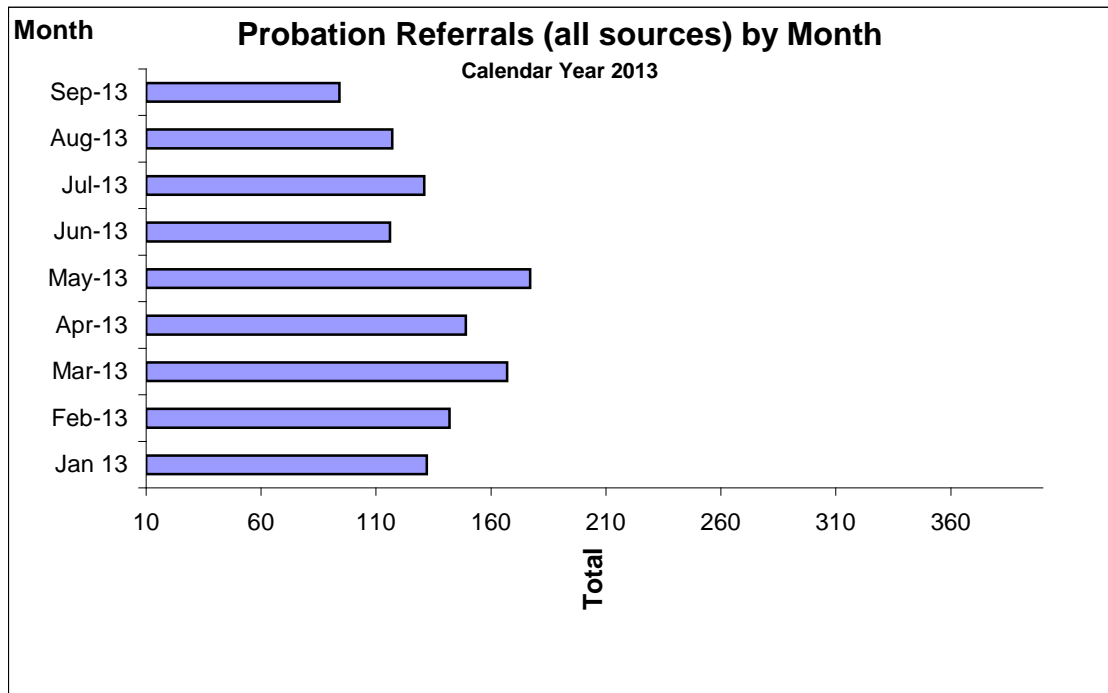
	Jan 13	Feb-13	Mar-13	Apr-13	May-13	Jun-13	Jul-13	Aug-13	Sep-13	Oct-13	Nov-13	Dec-13
Admissions	2	1	0	3	3	2	2	1	2			
Avg. Daily Pop.	16	18	16	15	17	16	14	10	10			



## Probation Referrals by Month Calendar Year 2013

### Probation Referrals (all sources) by Month (602 W&I)

Jan 13	132
Feb-13	142
Mar-13	167
Apr-13	149
May-13	177
Jun-13	116
Jul-13	131
Aug-13	117
Sep-13	94
Oct-13	
Nov-13	
Dec-13	

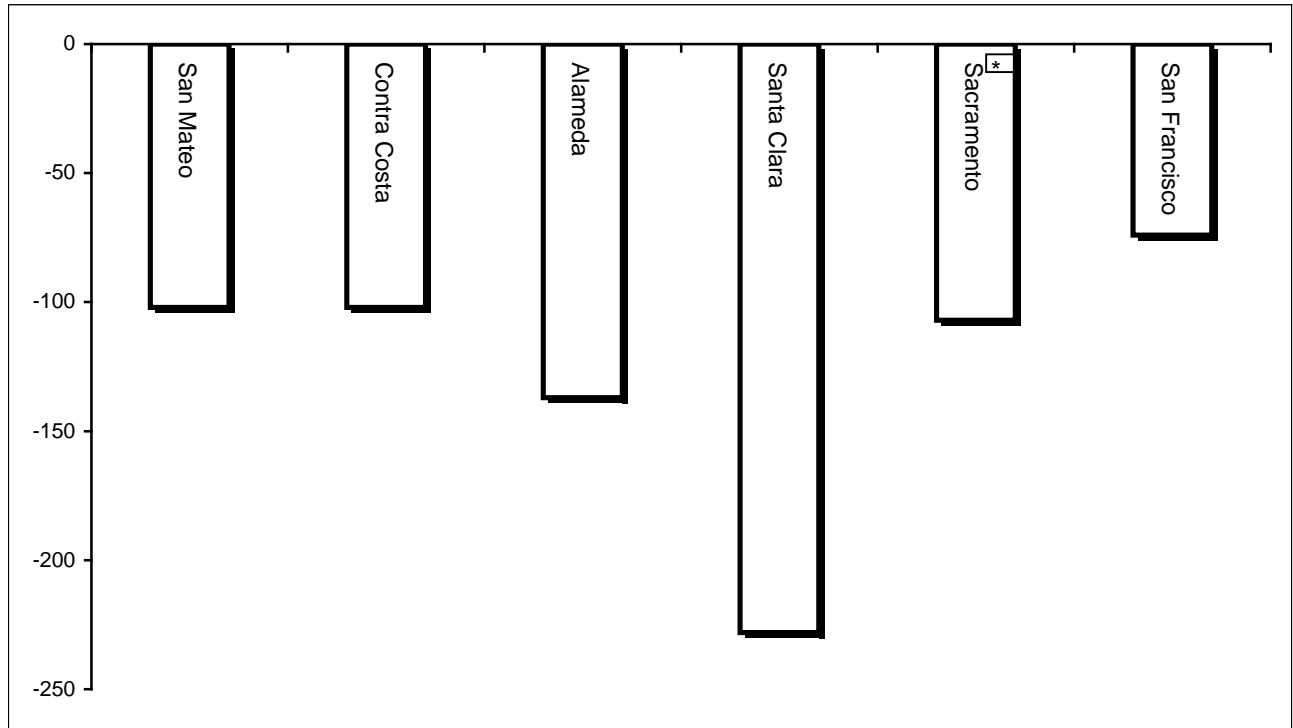


San Francisco Juvenile Probation Department  
Monthly Incident Report Form  
September 2013

<b>Juvenile Hall</b>	Battery on Staff	Injury to Staff Due to Restrain of Minor	Fights Minor on Minor	Battery Youth on Youth	Attempted Escape	AWOL	Attempted Suicide	Serious Contraband (Weapon illegal drug)	Use of Force	Self Inflicted Injuries
	0	0	10	0	0	0	1	2	0	0
	Assaults Minor on Minor	Battery on Staff with Injury	Fire	Fight with Injury	Battery Youth on Youth with Injury	Escape	Death	Suicide	Major Property Destruction	Use of Restraints (Handcuffs/ Shackles)
	0	0	0	0	1	0	0	0	0	2
<b>Log Cabin Ranch</b>	Battery on Staff	Injury to Staff due to Restraint of Minor	Fight	Battery Youth on Youth	Attempted Escape	AWOL	Attempted Suicide	Serious Contraband	Battery on Staff with Injury	Fire
	0	0	0	0	0	0	0	0	0	0
	Fight With Injury	Battery Youth on Youth with Injury	Escape	Death	Suicide	Major Property Destruction				
	0	0	0	0	0	0				

# Bay Area Resident Juvenile Hall Comparison Over/Under Capacity

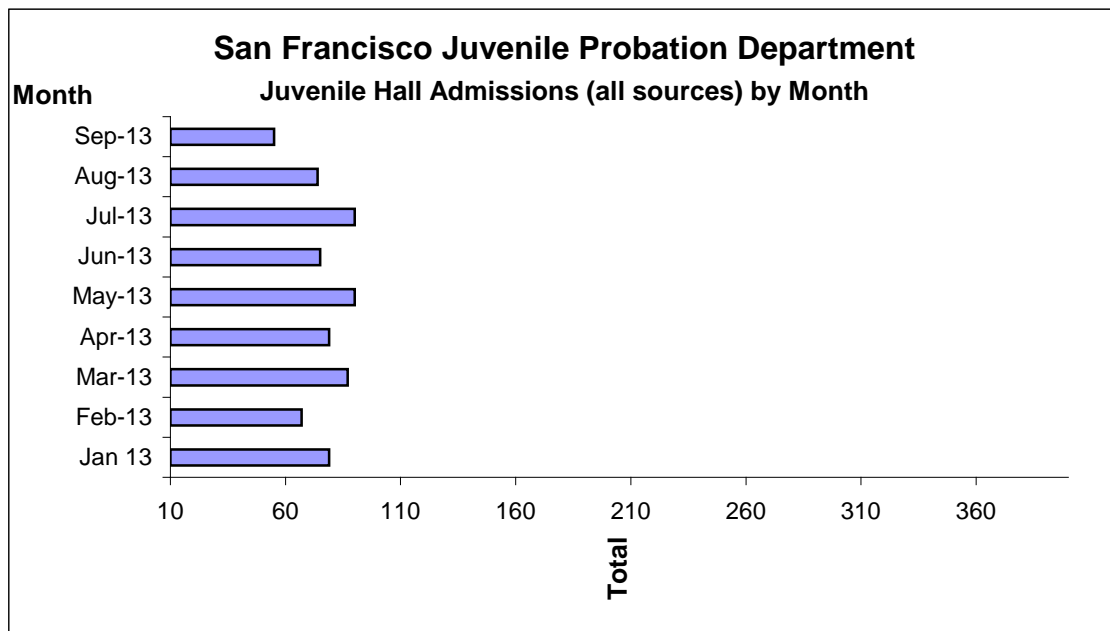
October 11<sup>th</sup>, 2013



	Rated Capacity	Actual	Over/Under Capacity
San Mateo	180	78	-102
Contra Costa	240	138	-102
Alameda	280	143	-137
Santa Clara	360	132	-228
Sacramento	308	201	-107
San Francisco	150	76	-74

## Juvenile Hall Admissions by Month Calendar Year 2013

Jan 13	79
Feb-13	67
Mar-13	87
Apr-13	79
May-13	90
Jun-13	75
Jul-13	90
Aug-13	74
Sep-13	55
Oct-13	
Nov-13	
Dec-13	

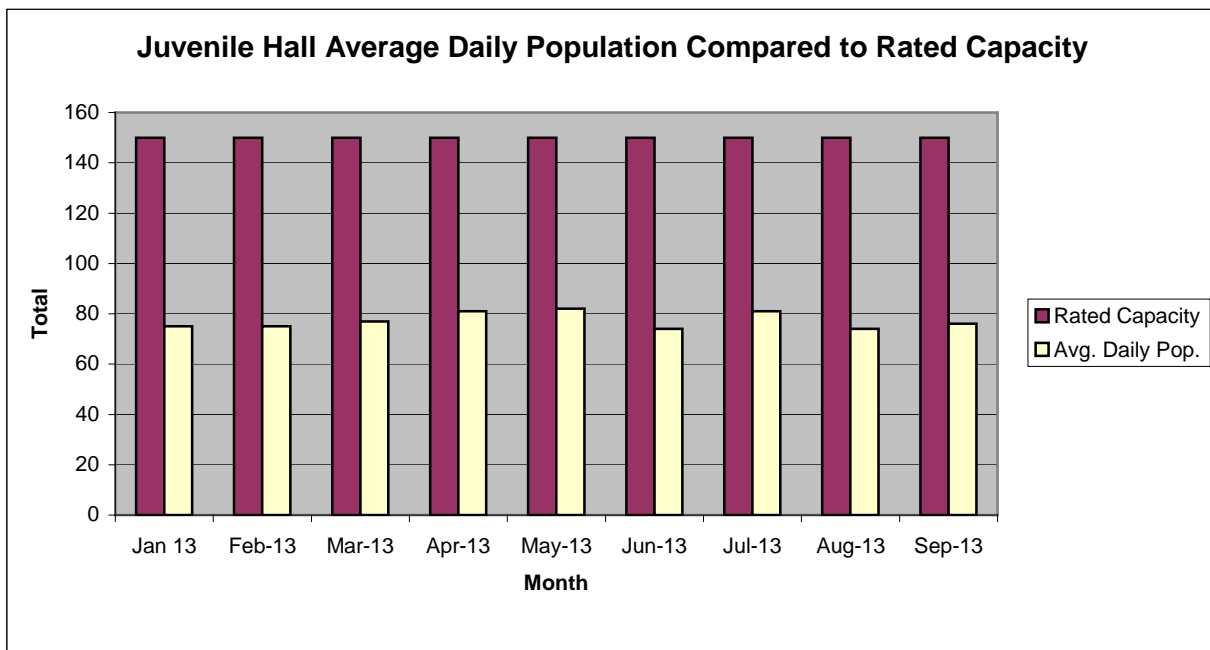


### Characteristics of Juvenile Hall Detainees on September 30<sup>th</sup>, 2013

Referral Reason	MF*	Literal	Count	%
187 (A) PC	F	MURDER	4	5.63%
664 /187 (A) PC	F	ATTEMPTED MURDER	2	2.82%
211 PC	F	ROBBERY	11	15.49%
11352 (A) HS	F	TRANSPORT/SELL NARCOTIC/CONTROLLED SUBSTANCE	1	1.41%
11351.5 HS	F	POSSESS/PURCHASE COCAINE BASE FOR SALE	1	1.41%
459 PC	F	BURGLARY	4	5.63%
4502 (A) PC	F	PRISONER POSSESS WEAPON	1	1.41%
245 (A)(2) PC	F	ASSAULT WITH FIREARM ON PERSON	1	1.41%
245 (A)(1) PC	F	ASSAULT W/DEADLY WEAPON:NOT F/ARM	3	4.23%
245 (A)(4) PC	F	ADW WITH FORCE:POSSIBLE GBI	1	1.41%
243 (D) PC	F	BATTERY W/SERIOUS BODILY INJURY	1	1.41%
29800 (A)(1) PC	F	FELON/ADDICT/POSSESS/ETC FIREARM	1	1.41%
25400 (C)(2) PC	F	CARRY CONCEALED STOLEN WEAPON	1	1.41%
242 PC	F	BATTERY	1	1.41%
487 (A) PC	F	GRAND THEFT:MONEY/LABOR/PROPERTY	1	1.41%
487 (C) PC	F	GRAND THEFT FROM PERSON	1	1.41%
10851 (A) VC	F	TAKE VEHICLE W/O OWNER'S CONSENT/VEHICLE THEFT	1	1.41%
25400 (A)(2) PC	F	CARRY CONCEALED WEAPON ON PERSON	1	1.41%
21310 PC	F	CARRY CONCEALED DIRK OR DAGGER	1	1.41%
594 (B)(1) PC	F	VANDALISM (\$400 OR MORE)	1	1.41%
148 (A)(1) PC	M	OBSTRUCT/RESIST/ETC PUBLIC/PEACE OFFICER/EMERGENCY MED TECH	2	2.82%
459 PC	M	BURGLARY	1	1.41%
242 PC	M	BATTERY	1	1.41%
484 (A) PC	M	PETTY THEFT	1	1.41%
777 (A)(2) WI	M	FAIL TO OBEY ORDER OF JUVENILE COURT:602 WI	3	4.23%
628.1 WI	M	VIOLATION(S) OF HOME SUPERVISION CONDITION	5	7.04%
737 WI	M	CHANGE OF PLACEMENT/PLACEMENT FAILURE	4	5.63%
WRNT602		WARRANT	12	16.90%
CTORD 602		COURT ORDER	3	4.23%
*M=Misdemeanor; F=Felony		<b>Total</b>	<b>71</b>	<b>100.00%</b>

## San Francisco Juvenile Probation Department

	Jan 13	Feb-13	Mar-13	Apr-13	May-13	Jun-13	Jul-13	Aug-13	Sep-13	Oct-13	Nov-13	Dec-13
Rated Capacity	150	150	150	150	150	150	150	150	150			
Avg. Daily Pop.	75	75	77	81	82	74	81	74	76			



## Juvenile Hall Average Length of Stay

For the Month of September 2013

### <sup>1</sup>Released

<b>Range of Days</b>	<i>1-10 days</i>	<i>11-20 days</i>	<i>21-30 days</i>	<i>30 or more days</i>	<b>Total</b>
# of Youth Released	29	11	7	16	63
% of Population	46.03%	17.46%	11.11%	25.40%	100%
# of Days	92	167	174	957	1,390
% of Total Days	6.62%	12.01%	12.52%	68.85%	100%
Average Length of Stay	3.17	15.18	24.86	59.81	22.06

### <sup>2</sup>In Custody

<b>Range of Days</b>	<i>1-10 days</i>	<i>11-20 days</i>	<i>21-30 days</i>	<i>30 or more days</i>	<b>Total</b>
# of Youth Detained	10	10	7	44	71
% of Population	14.08%	14.08%	9.86%	61.97%	100%
# of Days	56	148	166	4,645	5,015
% of Total Days	1.12%	2.95%	3.31%	92.62%	100%
Average Length of Stay	5.60	14.80	23.71	105.57	70.63

Notes: Less than one day of stay is calculated as one day.

<sup>1</sup>Length of stay is calculated according to release date for those who are released.

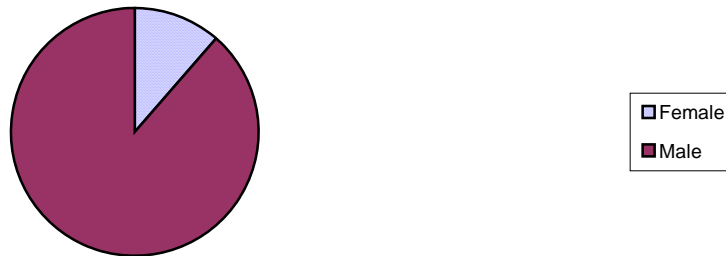
<sup>2</sup>For those still in custody, length of stay is calculated at the last day of the month.

## **Section III**

# **Demographics**

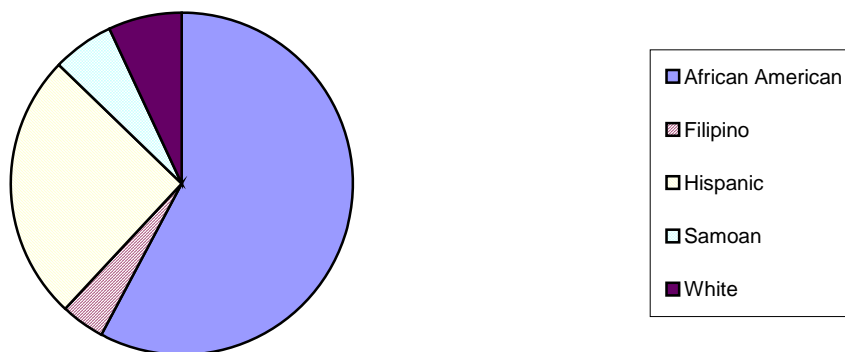
Gender	Frequency	Percent
Female	8	11.27%
Male	63	88.73%
<b>Total</b>	<b>71</b>	<b>100.00%</b>

**Demographic Characteristics  
Of Juvenile Hall Detainees on 9/30/13 by Gender**

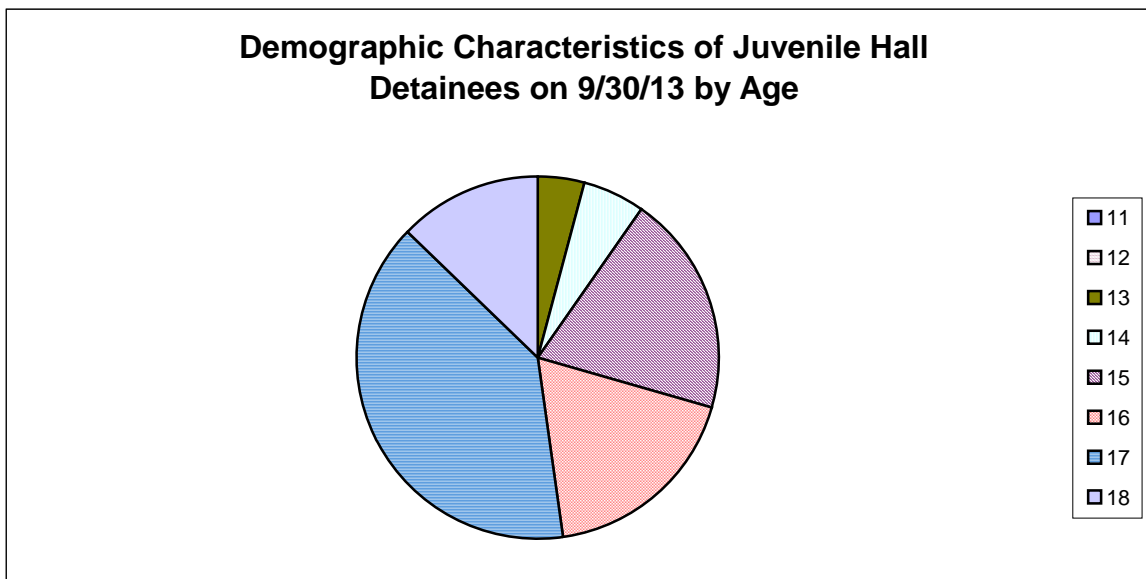


Race/Ethnic Origin	Frequency	Percent
African American	41	57.75%
Filipino	3	4.23%
Hispanic	18	25.35%
Samoan	4	5.63%
White	5	7.04%
<b>Total</b>	<b>71</b>	<b>100.00%</b>

**Demographic Characteristics of Juvenile Hall Detainees on  
9/30/13 by Race**

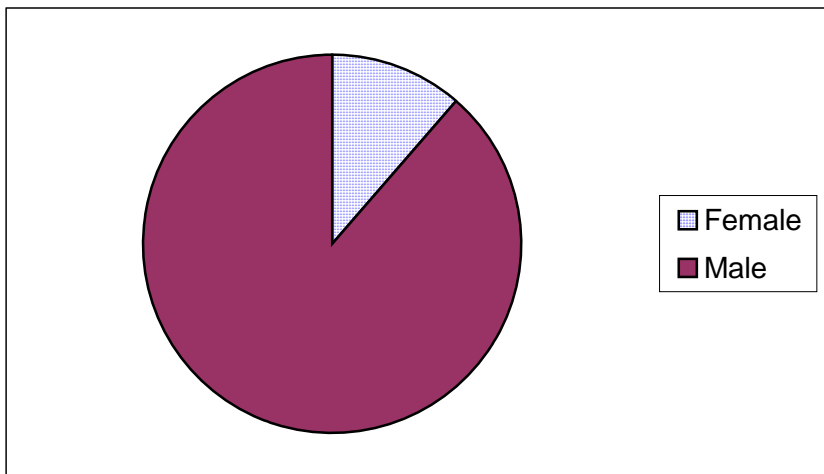


Age	Frequency	Percent
11	0	0.00%
12	0	0.00%
13	3	4.23%
14	4	5.63%
15	14	19.72%
16	13	18.31%
17	28	39.44%
18	9	12.68%
<b>Total</b>	<b>71</b>	<b>100.00%</b>



Demographic Characteristics of Juvenile Hall Detainees  
on 9/30/2013  
Age by Gender

Age	Female	Male	Total	
11	0	0	0	0.00%
12	0	0	0	0.00%
13	0	3	3	4.23%
14	1	3	4	5.63%
15	1	13	14	19.72%
16	3	10	13	18.31%
17	2	26	28	39.44%
18 and over	1	8	9	12.68%
<b>Total</b>	<b>8</b>	<b>63</b>	<b>71</b>	<b>100.00%</b>
	<b>11.27%</b>	<b>88.73%</b>	<b>100.00%</b>	



Demographic Characteristics  
Of Juvenile Hall Detainees on September 30<sup>th</sup>, 2013

---

<b>Geographic Residence of Youth</b>	<b>Count</b>	<b>%</b>
Richmond	0	0.0%
Marina	2	2.8%
North of Market/Downtown	0	0.0%
Treasure Island/Yerba Buena Island	0	0.0%
Western Addition	8	11.3%
South of Market/Tenderloin	3	4.2%
Sunset	0	0.0%
Haight Ashbury/Castro/Upper Market	2	2.8%
Inner Mission	3	4.2%
Potrero	3	4.2%
Parkside	0	0.0%
Ingleside (West of Twin Peaks)	7	9.9%
Outer Mission	13	18.3%
Bayview	16	22.5%
Non-San Francisco and Unavailable	14	19.7%
<b>Total</b>	<b>71</b>	<b>100.0%</b>

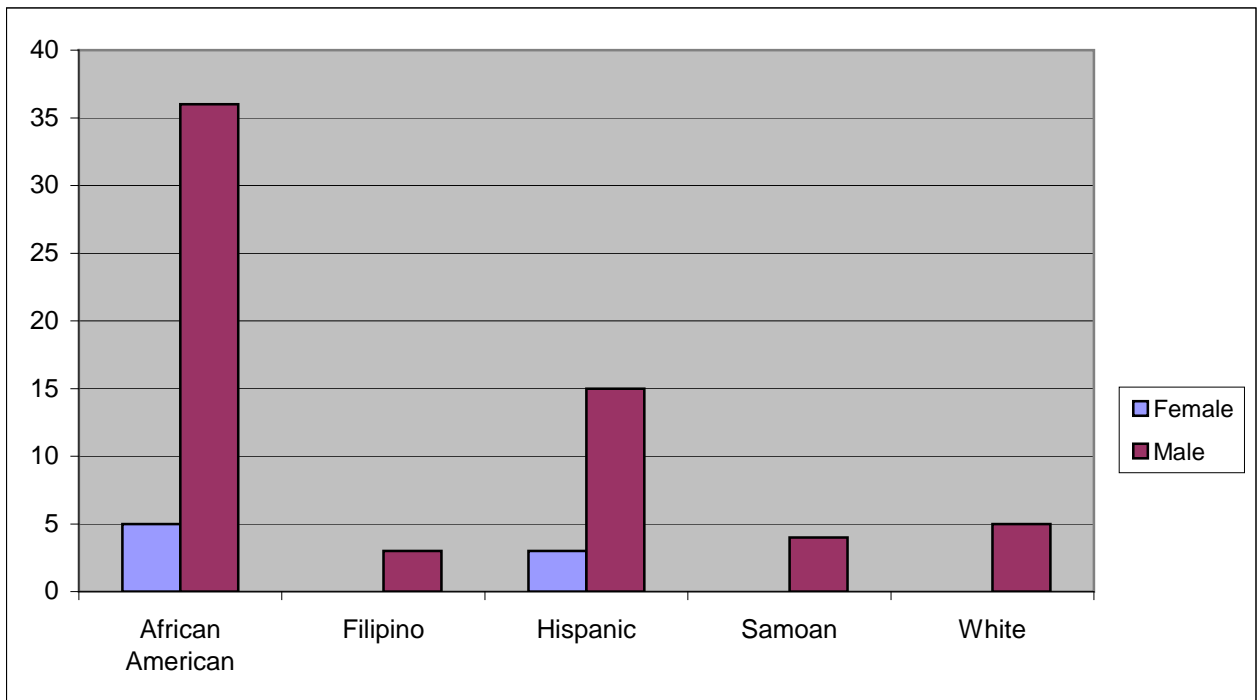
<b>Non-San Francisco and Unavailable</b>	<b>Count</b>	<b>%</b>
Arlington	1	7.1%
Daly City	1	7.1%
Fairfield	1	7.1%
Grass Valley	2	14.3%
Honduras	1	7.1%
Oakland	2	14.3%
Sacramento	2	14.3%
San Bruno	1	7.1%
San Jose	1	7.1%
San Pablo	1	7.1%
Unavailable	1	7.1%
<b>Total</b>	<b>14</b>	<b>100.0%</b>

Demographic Characteristics  
Of Juvenile Hall Detainees on September 30<sup>th</sup>, 2013

---

**Race/Ethnic Origin by Gender**

Race/Ethnicity	Female	Male	Total	%
African American	5	36	41	57.7%
Filipino	0	3	3	4.2%
Hispanic	3	15	18	25.4%
Samoan	0	4	4	5.6%
White	0	5	5	7.0%
<b>Total</b>	<b>8</b>	<b>63</b>	<b>71</b>	<b>100.0%</b>

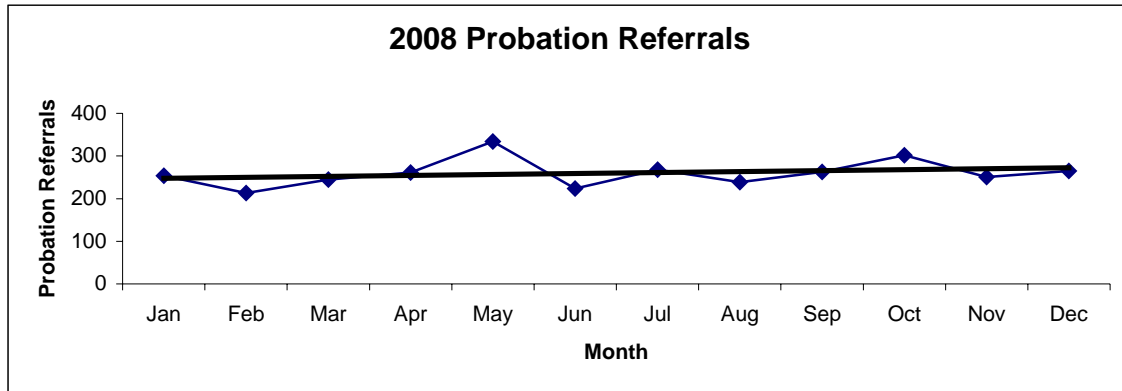


# **Section IV**

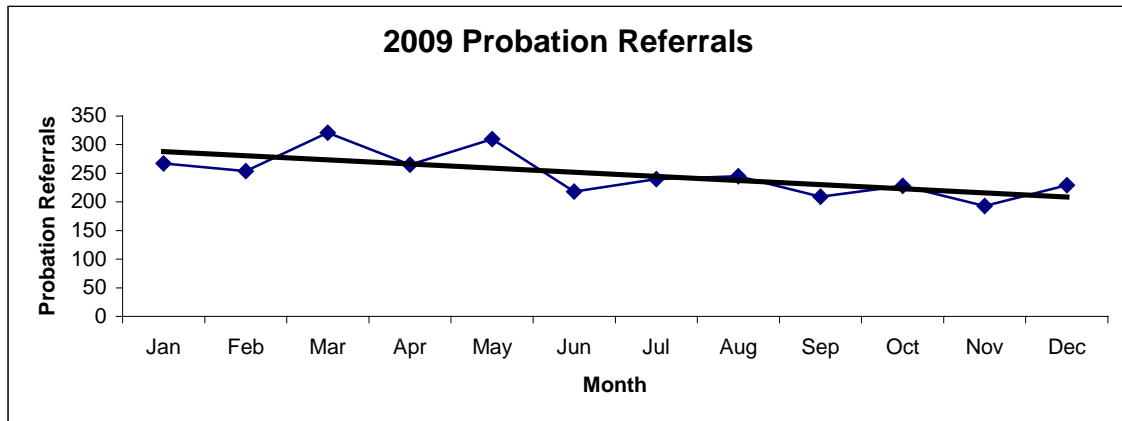
## **Historical Information**

San Francisco Juvenile Probation Department  
**Probation Referrals (all sources) By Month**  
 (2008-2010)

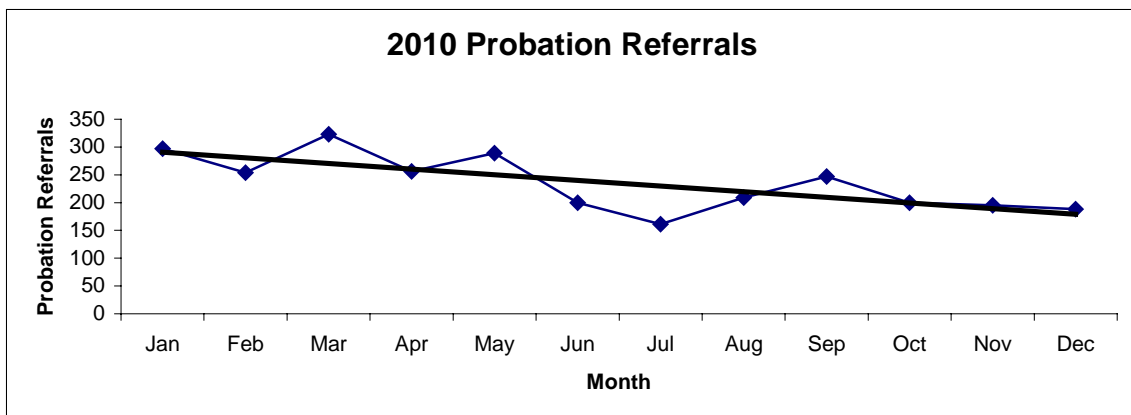
2008 Probation Referrals	Jan	Feb	Mar	Apr	May	Jun	Jul	Aug	Sep	Oct	Nov	Dec	Total
	254	213	245	261	334	224	268	239	263	302	251	265	<b>3119</b>



2009 Probation Referrals	Jan	Feb	Mar	Apr	May	Jun	Jul	Aug	Sep	Oct	Nov	Dec	Total
	267	254	321	265	310	218	240	245	209	228	193	229	<b>2979</b>

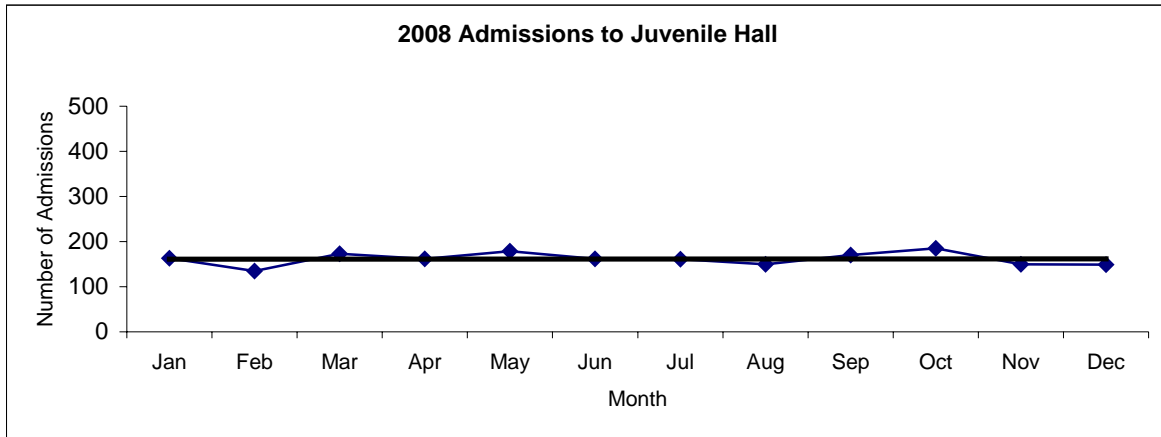


2010 Probation Referrals	Jan	Feb	Mar	Apr	May	Jun	Jul	Aug	Sep	Oct	Nov	Dec	Total
	297	254	323	256	289	200	161	209	247	200	195	188	<b>2819</b>

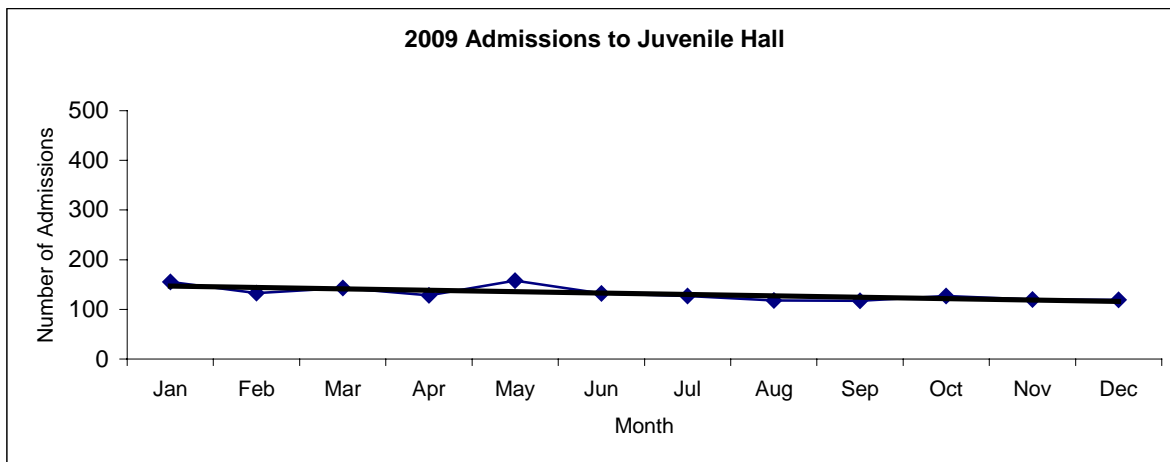


**San Francisco Juvenile Probation**  
**Juvenile Hall Admissions By Month**  
(2008-2010)

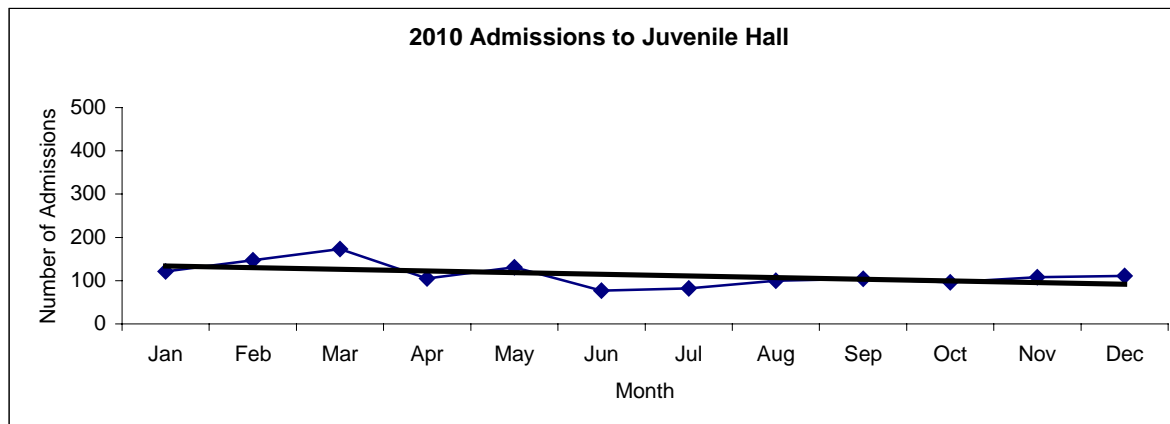
2008 Admissions	Jan	Feb	Mar	Apr	May	Jun	Jul	Aug	Sep	Oct	Nov	Dec	Total
	163	135	173	162	179	162	161	150	170	185	150	149	<b>1939</b>



2009 Admissions	Jan	Feb	Mar	Apr	May	Jun	Jul	Aug	Sep	Oct	Nov	Dec	Total
	155	133	143	128	158	132	127	118	117	127	120	119	<b>1577</b>

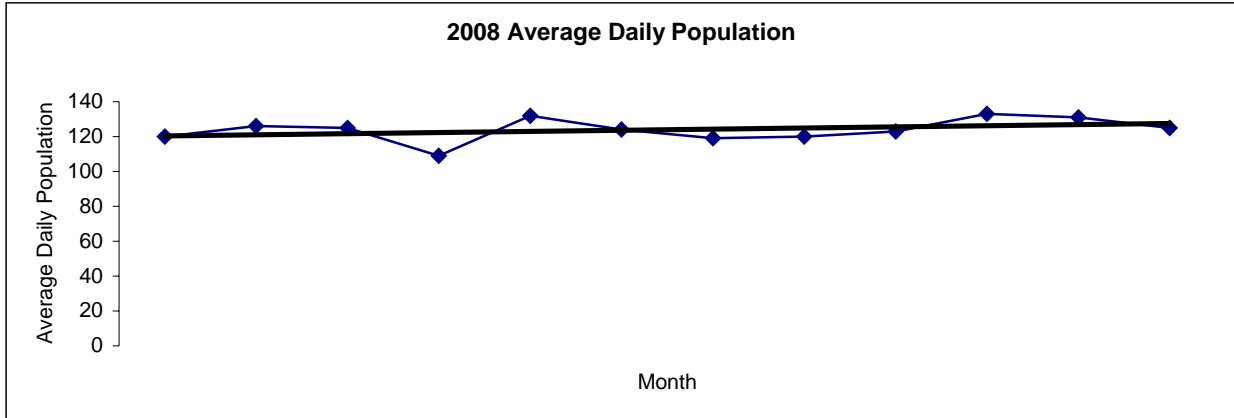


2010 Admissions	Jan	Feb	Mar	Apr	May	Jun	Jul	Aug	Sep	Oct	Nov	Dec	Total
	121	147	173	105	131	77	82	100	104	96	108	111	<b>1355</b>

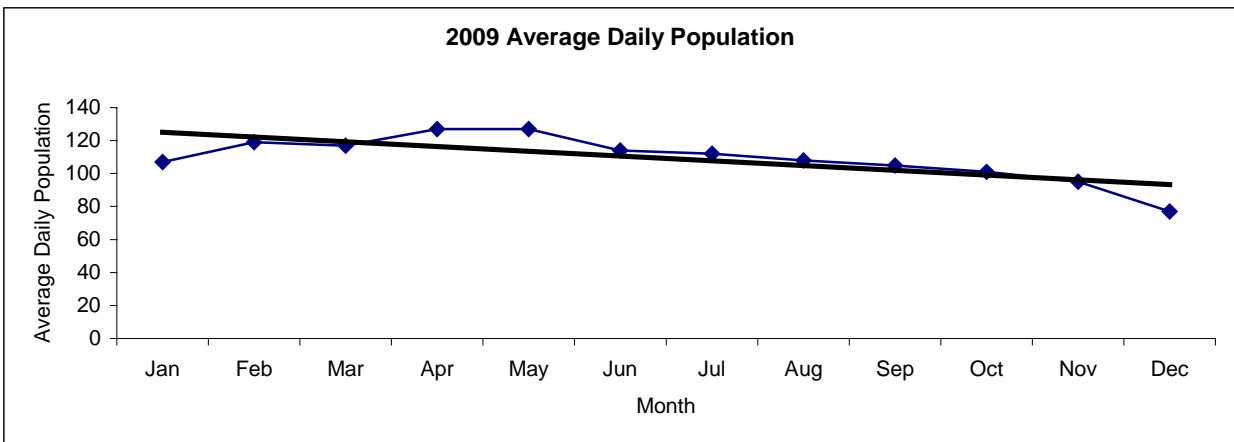


San Francisco Juvenile Probation  
**Juvenile Hall Average Daily Population By Month**  
 (2008-2010)

2008 Avg. Daily Pop.	Jan	Feb	Mar	Apr	May	Jun	Jul	Aug	Sep	Oct	Nov	Dec	Total
	120	126	125	109	132	124	119	120	123	133	131	125	<b>124</b>



2009 Avg. Daily Pop.	Jan	Feb	Mar	Apr	May	Jun	Jul	Aug	Sep	Oct	Nov	Dec	Total
	107	119	117	127	127	114	112	108	105	101	95	77	<b>109</b>



2010 Avg. Daily Pop.	Jan	Feb	Mar	Apr	May	Jun	Jul	Aug	Sep	Oct	Nov	Dec	Total
	85	104	110	107	99	97	90	88	90	84	79	92	<b>94</b>

