



San Francisco Juvenile Probation Department

2012 Statistical Report

1/1/12 to 12/31/12

William P. Siffermann
Chief Probation Officer

Created by
Jose Luis Perla
IT Director
Information Technology Unit
375 Woodside Avenue
San Francisco, CA 94127
(415) 753-7686
jose.perla@sfgov.org

1/18/2013



**City and County of San Francisco
Juvenile Probation Department**

William P. Siffermann
Chief Probation Officer

375 Woodside Avenue
San Francisco, CA 94127
(415) 753-7556

January, 2013

On behalf of the entire San Francisco Juvenile Probation Department, I welcome your review of our **2012 Annual Report** prepared under the direction of our Information Technology Director, Jose Perla.

As in the past, our report depicts the composition of our assigned workload and reflects the dispositional outcomes for all the matters addressed by the Juvenile Probation Department during this past year. We continue to include in our report, various presentations of aggregate data assembled on geographical maps arranged by zip codes, supervisorial districts and police districts. The statistical breakdown at the various case decision points provides you with an opportunity to see the variety of tracks and dispositions available within the San Francisco juvenile justice system.

Again included in our report is a section which provides a detailed focus upon probation violations. We continue to use these data to guide our efforts in creating a grid of alternative responses to technical violations of probation that includes incentives. We hope you find these data useful in the development of community based services that will support our efforts with this special juvenile population.

Thanks again for your interest in the San Francisco Juvenile Probation Department. While the aggregate numbers presented in this report help describe the landscape of our workload, please be assured that our staff in every division are committed to provide meaningful interventions with youth and families that develop pro-social competencies in the context of enhanced public safety and productive community membership. Please know that we are always open to your suggestions on ways we can improve those efforts so that the positive outcomes for the youth and our community are enhanced.

We remain grateful for your interest and support and welcome any suggestions you may have on ways we can improve the scope and utility of future Annual Reports.

Sincerely,

A handwritten signature in black ink that reads "William P. Siffermann".

William P. Siffermann
Chief Probation Officer

Table of Contents

Statistical Reports

Five-Year Statistical Summary All Juvenile Hall Bookings1
Five-Year Statistical Summary Petition Outcome.....2

Juvenile Probation Referrals

Unduplicated Count of Juvenile Probation Referrals by Gender,
Race/Ethnic Origin, and Age3
Unduplicated Count of Juvenile Probation Referrals by Geographical
Residence of Youth – San Francisco Zip Code4
Unduplicated Count of Juvenile Probation Referrals by Geographical
Residence of Youth – Map of Supervisorial Districts Boundaries5
Unduplicated Count of Juvenile Probation Referrals by Geographical
Residence of Youth – Map of San Francisco Zip Code Boundaries6
Duplicated Count of Juvenile Probation Referrals by Gender,
Race/Ethnic Origin, and Age at Referral7
Duplicated Count of Juvenile Probation Referrals for Criminal Offenses8

Juvenile Hall Bookings (Detentions)

Unduplicated Count of Juvenile Hall Bookings for Criminal Offenses by Gender,
Race/Ethnic Origin, and Age9
Unduplicated Count of Juvenile Hall Bookings for Criminal Offenses by Geographical
Residence of Youth – *Map of Supervisorial Districts Boundaries*10
Unduplicated Count of Juvenile Hall Bookings for Criminal Offenses by Geographical
Residence of Youth – *Map of San Francisco Zip Code Boundaries*11
Unduplicated Count of Juvenile Hall Bookings for Criminal Offenses
– Five-Year Comparison by Geographical Residence of Youth12

Unduplicated Count of Juvenile Hall Bookings– Analysis of the Prior Arrests for Criminal Offenses of Youth Admitted to Detention (<i>Line Chart</i>)	13
Duplicated Count of Juvenile Hall Bookings for Criminal Offenses By Year 2001 – 2012 (<i>Line Chart</i>).....	14
Duplicated Count of Juvenile Hall Bookings by Most to Least Serious Detention Reasons using Department of Justice Summary Code.....	15
Duplicated Count of Juvenile Hall Bookings for Criminal Offenses By Referral Source.....	16
Duplicated Count of Juvenile Hall Bookings for Criminal Offenses By FBI Part I and Part II Crimes	17
Duplicated Count of Juvenile Hall Bookings for Criminal Offenses By Gender, Crime Type and Offense Degree Level.....	18
Duplicated Count of Juvenile Hall Bookings for Criminal Offenses By Race/Ethnic Origin, Crime Type and Offense Degree Level.....	19

Petitions Filed

Duplicated Count of Petitions Filed by Most to Least Serious Petition Reasons using Department of Justice Summary Code	20
Duplicated Count of Petitions Filed for Criminal Offenses By Gender, Crime Type and Offense Degree Level.....	21
Duplicated Count of Petitions Filed for Criminal Offenses By Race/Ethnic Origin, Crime Type and Offense Degree Level.....	22

Petitions Sustained

Duplicated Count of Petitions Sustained by Most to Least Serious
Petition Sustained using Department of Justice Summary Code.....23

Duplicated Count of Petitions Sustained for Criminal Offenses
By Gender, Crime Type and Offense Degree Level.....24

Duplicated Count of Petitions Sustained for Criminal Offenses
By Race/Ethnic Origin, Crime Type and Offense Degree Level.....25

Graphics

2012 Juvenile Hall Average Daily Population26

2012 Juvenile Hall Average Length of Stay27

2012 Juvenile Court Processing of Law Violation Cases.....28

Juvenile Justice System Terms

Juvenile Justice Terms29

Appendix

Profile of Girls 1-10

Probation Violations 1-5

San Francisco Juvenile Probation Department
All Juvenile Hall Bookings
Statistical Summary
2008-2012

						2007-2011
	Year	Year	Year	Year	Year	Percent
	2008	2009	2010	2011	2012	Change
All Referrals*	3,446	3,296	2,814	2,196	1,871	-45.7%
Petitions Filed	1,607	1,291	1,209	1,009	823	-48.8%
% Petitions Filed	46.6%	39.2%	43.0%	45.9%	44.0%	
Referrals resulting in a booking						
All Juvenile Hall Bookings	1,931	1,569	1,355	1,146	937	-51.48%
Average Length of Stay	23	23	24	27	24	4.35%
Average Daily Population	124	109	94	89	74	-40.32%
% of Referrals Detained	56.0%	47.6%	48.2%	52.2%	50.1%	

**Includes Court Orders, Violation of Probation, Home Detention Failures, Warrants, Transfers from other Counties, Citations, Certifications from Adult Court, Placement Failures, Log Cabin Medical plus all criminal offenses.*

2012 Referrals	Count	%
Bookings	937	50.08%
Citations	753	40.25%
Other	181	9.67%
Total All Referrals	1,871	100.00%

Other Referrals	Count	%
602 WI Petition Filed	2	1.10%
777 WI Petition Filed	101	55.80%
Courtesy Supervision	1	0.55%
DJJ interstate Compact	1	0.55%
Transfer In From Other County	76	41.99%
Total	181	100.00%

San Francisco Juvenile Probation Department
 Statistical Summary
 2008-2012

						2007-2011
	Year	Year	Year	Year	Year	Percent
	2008	2009	2010	2011	2012	Change
All Referrals*	3,446	3,296	2,814	2,196	1,871	-45.7%
Petitions Filed	1,607	1,291	1,209	1,009	823	-48.8%
% Petitions Filed	46.6%	39.2%	43.0%	45.9%	44.0%	
Outcome						
Log Cabin Ranch School	21	22	33	24	33	57.14%
California Youth Authority	2	3	2	1	4	100.00%
Ward Probation	446	412	335	352	217	-51.35%
Non-Ward Probation (725a WI)	53	60	45	30	30	-43.40%
Out-of-home Placement	218	155	130	137	99	-54.59%
Informal Probation (654 WI)	226	173	151	132	105	-53.54%
Remand to Adult Court (707)	5	4	0	6	0	-100.00%
Transfer Out to Another County	171	159	138	136	120	-29.82%
Petition Sustained	1,100	936	757	640	550	-50.00%
Petition Dismissed	292	255	326	257	181	-38.01%

**Includes Court Orders, Violation of Probation, Home Detention Failures, Warrants, Transfers from other Counties, Citations, Certifications from Adult Court, Placement Failures, Log Cabin Medical plus all criminal offenses.*

The total number of outcome (court dispositions) will not agree with the number of petitions and referrals since some petitions filed in 2012 will be decided in 2013 and multiple petitions are combined with one final outcome only. Not all referrals resulted in a petition filed.

Calendar Year 2012
San Francisco Juvenile Probation Department
Unduplicated Count of Juvenile Probation Referrals
N=1,202

Gender	Count	%
FEMALE	376	31.28%
MALE	826	68.72%
Total	1,202	100.00%

Race/Ethnic Origin	Count	%
AFRICAN AMERICAN	591	49.17%
AMERICAN INDIAN	1	0.08%
CAMBODIAN	1	0.08%
CHINESE	51	4.24%
FILIPINO	17	1.41%
HISPANIC	306	25.46%
JAPANESE	1	0.08%
KOREAN	2	0.17%
LAOTIAN	1	0.08%
OTHER	47	3.91%
OTHER ASIAN	25	2.08%
PACIFIC ISLANDER	6	0.50%
SAMOAN	32	2.66%
VIETNAMESE	2	0.17%
WHITE	119	9.90%
Total	1,202	100.00%

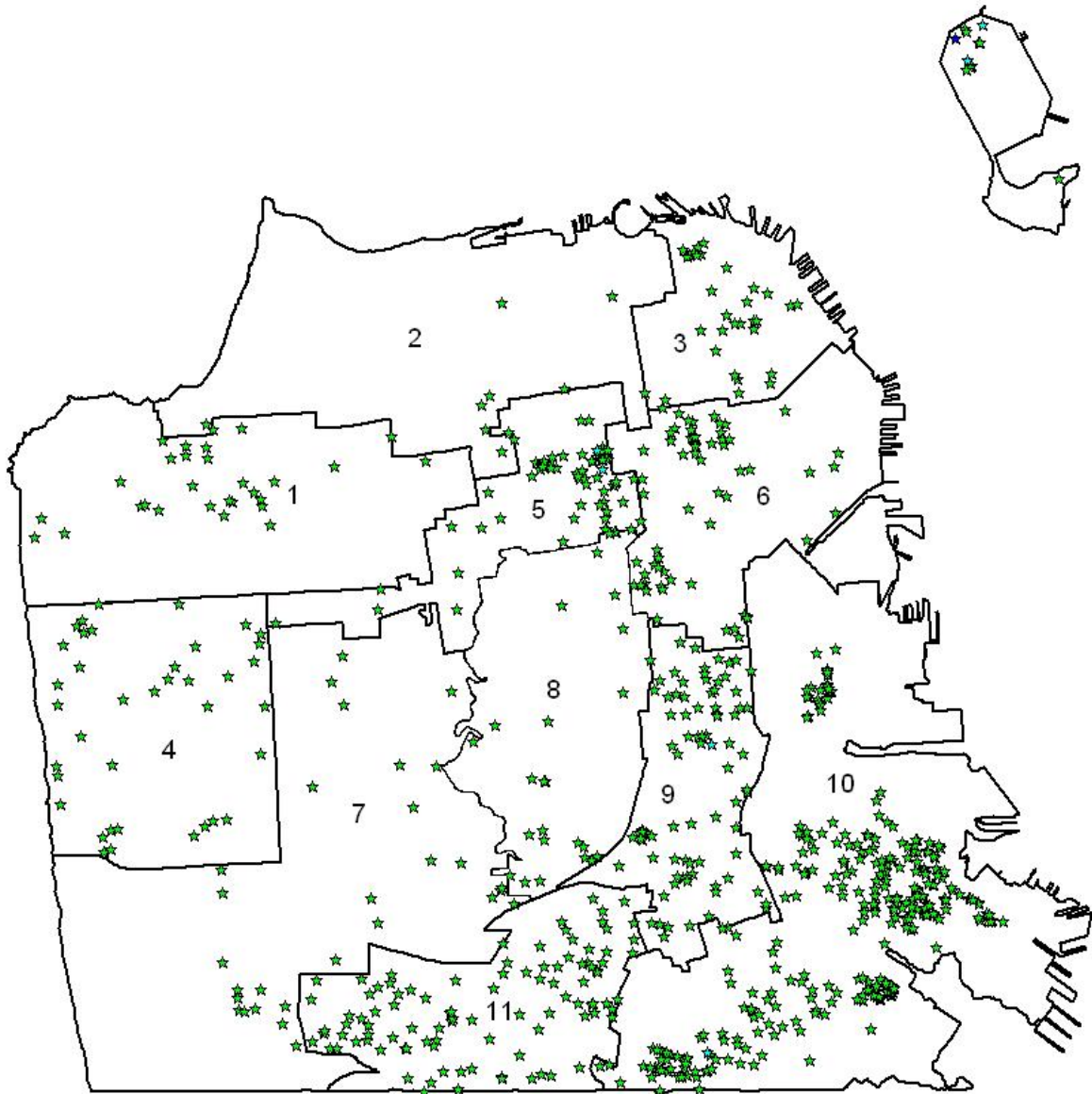
Age on 1/1/13	Count	%
10	1	0.08%
11	6	0.50%
12	18	1.50%
13	37	3.08%
14	127	10.57%
15	169	14.06%
16	261	21.71%
17	303	25.21%
18	241	20.05%
Over 18	39	3.24%
Total	1,202	100.00%

Calendar Year 2012
San Francisco Juvenile Probation Department
Unduplicated Count of Juvenile Probation Referrals
N=1,202

Zip Code		Count	%
94102	Tenderloin/Western Addition	33	2.75%
94103	South of Market	32	2.66%
94105	Rincon Hill	2	0.17%
94107	Potrero Hill	33	2.75%
94108	Chinatown	4	0.33%
94109	Russian Hill/Polk Gulch	17	1.41%
94110	Inner Mission	89	7.40%
94111	Telegraph Hill/Waterfront	2	0.17%
94112	Ingleside/Excelsior	94	7.82%
94114	Castro/Eureka Valley	3	0.25%
94115	Western Addition	53	4.41%
94116	Parkside	18	1.50%
94117	Haight Ashbury/L Western Addition	13	1.08%
94118	Inner Richmond	3	0.25%
94121	Outer Richmond	30	2.50%
94122	Sunset	30	2.50%
94123	Marina/Cow Hollow	2	0.17%
94124	Bayview/Hunters Point	239	19.88%
94127	Miraloma/Sunnyside	8	0.67%
94130	Treasure Island	15	1.25%
94131	Twin Peaks/Glen Park	20	1.66%
94132	Lake Merced	32	2.66%
94133	North Beach	28	2.33%
94134	Visitacion Valley/Portola	99	8.24%
	<i>Non-San Francisco and Unavailable</i> ¹	303	25.21%
	Total	1,202	74.79%
	¹ Non-San Francisco and Unavailable	Count	%
	OAKLAND	77	25.41%
	DALY CITY	19	6.27%
	RICHMOND	17	5.61%
	HAYWARD	13	4.29%
	ANTIOCH	11	3.63%
	VALLEJO	10	3.30%
	FAIRFILED	8	2.64%
	SOUTH SAN FRANCISCO	8	2.64%
	ALAMEDA	7	2.31%
	<i>OTHER CITIES</i> ²	117	38.61%
	<i>UNAVAILABLE</i>	16	5.28%
	Total	303	100.00%

²Account for 67 cities with a minimum count of 1, maximum count of 7, and average of 1.74

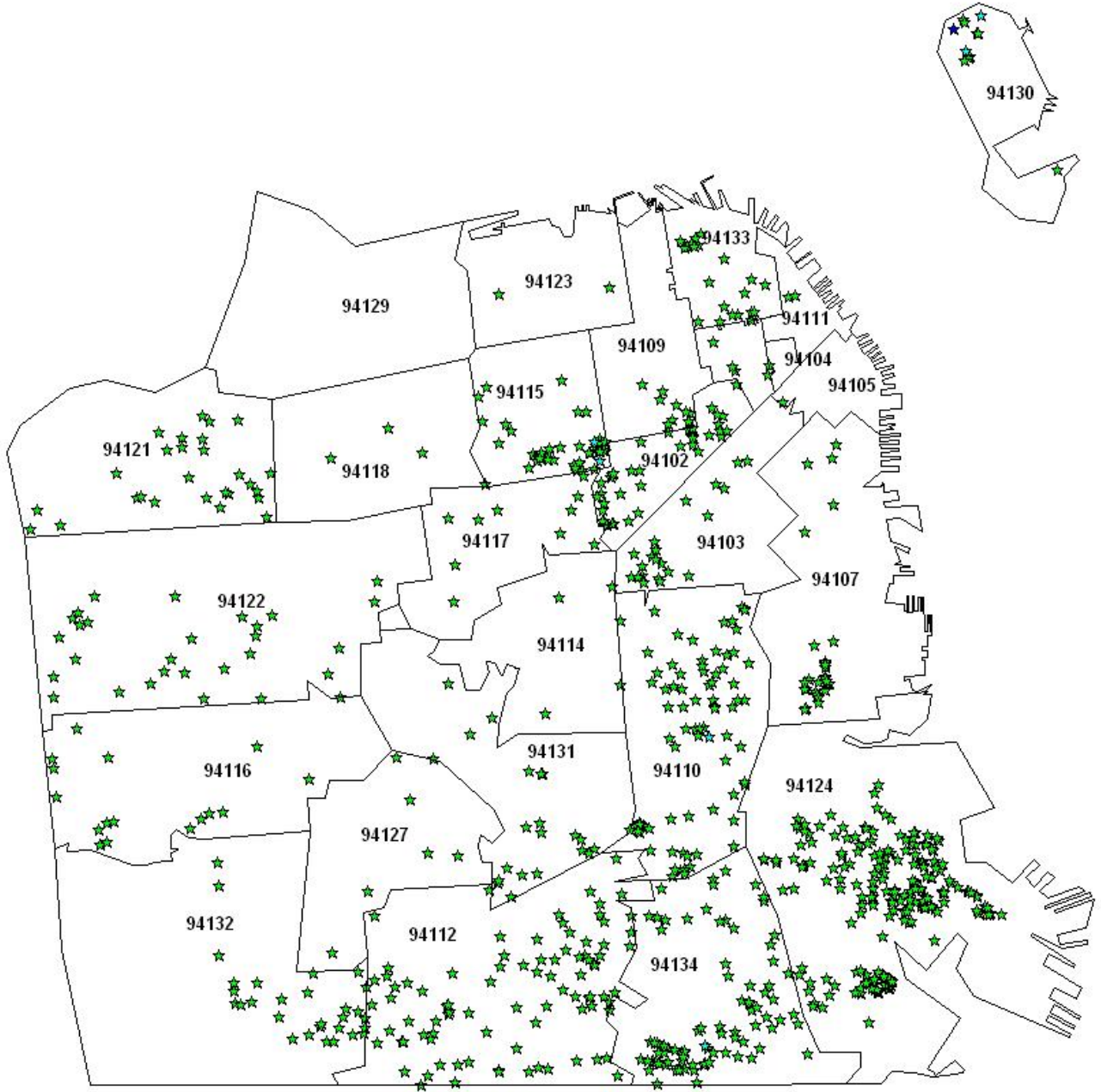
San Francisco Juvenile Probation Department
2012 Unduplicated Count of Juvenile Probation Referrals
By Geographical Residence of Youth
Supervisorial District Boundaries
N=1,202¹



¹San Francisco = 899 (74.79%)
Non-San Francisco = 303 (25.21%)

San Francisco Juvenile Probation Department
2012 Unduplicated Count of Juvenile Probation Referrals
By Geographical Residence of Youth
San Francisco Zip Code Boundaries
N=1,202¹

¹San Francisco = 899 (74.79%)
Non-San Francisco = 303 (25.21%)



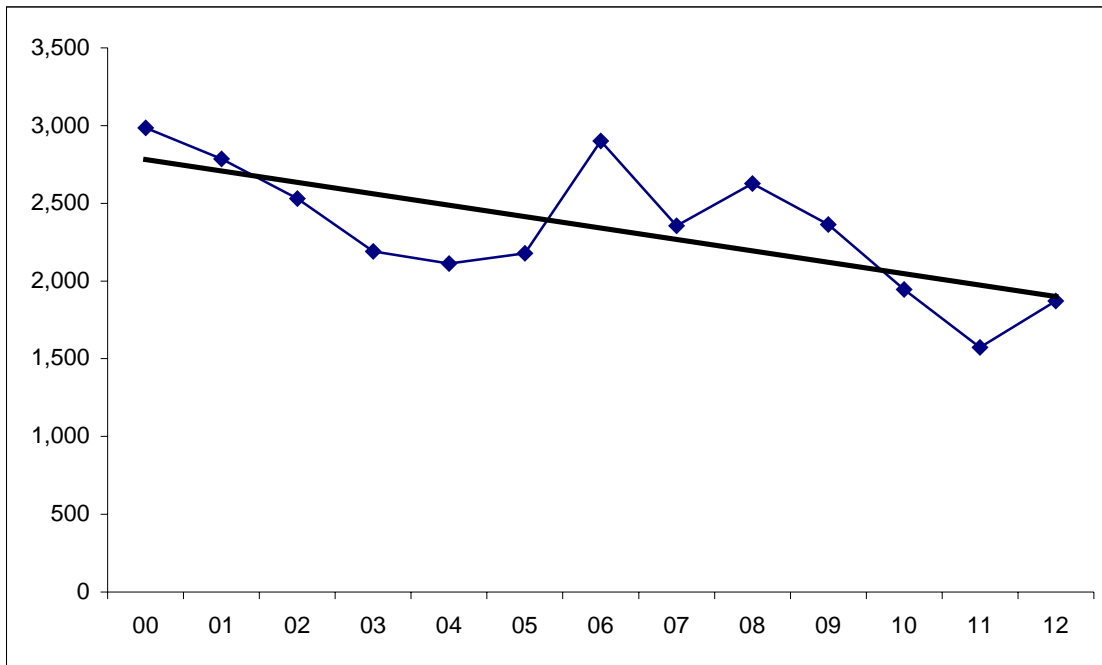
Calendar Year 2012
 San Francisco Juvenile Probation Department
 Duplicated Count of Juvenile Probation Referrals
 N=1,871

Gender	Count	%
FEMALE	514	27.47%
MALE	1,357	72.53%
Total	1,871	100.00%

Race/Ethnic Origin	Count	%
AFRICAN AMERICAN	974	52.06%
AMERICAN INDIAN	1	0.05%
CAMBODIAN	1	0.05%
CHINESE	54	2.89%
FILIPINO	28	1.50%
HISPANIC	479	25.60%
JAPANESE	2	0.11%
KOREAN	2	0.11%
LAOTIAN	1	0.05%
OTHER	67	3.58%
OTHER ASIAN	27	1.44%
PACIFIC ISLANDER	8	0.43%
SAMOAN	73	3.90%
VIETNAMESE	3	0.16%
WHITE	151	8.07%
Total	1,871	100.00%

Age at Referral	Count	%
10	3	0.16%
11	14	0.75%
12	33	1.76%
13	114	6.09%
14	211	11.28%
15	347	18.55%
16	431	23.04%
17	589	31.48%
18	117	6.25%
Over 18	12	0.64%
Total	1,871	100.00%

San Francisco Juvenile Probation Department
 Duplicated Count of Juvenile Probation Referrals -Criminal Offenses
 2000-2012



Year	Referrals
00	2,986
01	2,785
02	2,530
03	2,191
04	2,113
05	2,179
06	2,900
07	2,356
08	2,628
09	2,364
10	1,945
11	1,573
12	1,871

Gender	2000	2001	2002	2003	2004	2005	2006	2007	2008	2009	2010	2011	2012
Male	1,924	1,829	1,687	1,537	1,452	1,593	2,075	1,646	1,892	1,671	1,378	1,134	1,357
Female	1,062	956	843	654	661	586	825	710	736	693	567	439	514
Total	2,986	2,785	2,530	2,191	2,113	2,179	2,900	2,356	2,628	2,364	1,945	1,573	1,871

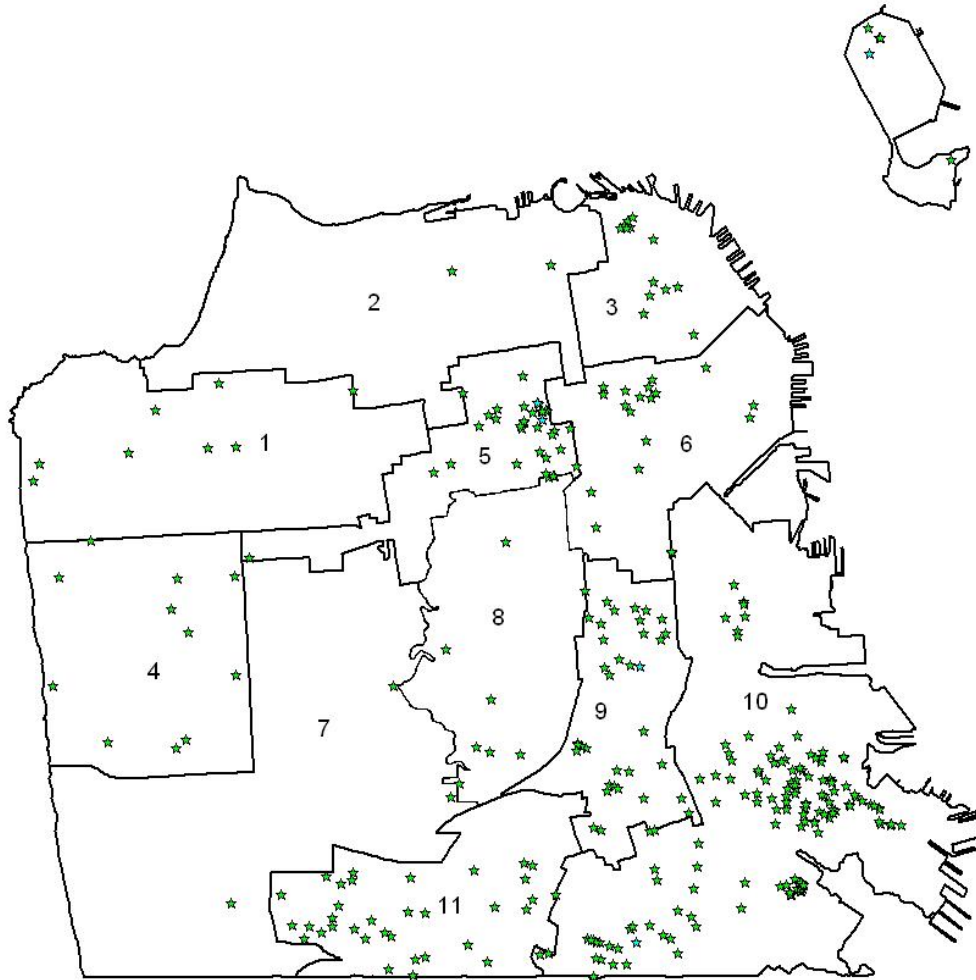
Calendar Year 2012
San Francisco Juvenile Probation Department
Unduplicated Count of Juvenile Hall Bookings
Criminal Offenses
N=465

Gender	Count	%
FEMALE	105	22.58%
MALE	360	77.42%
Total	465	100.00%

Race/Ethnic Origin	Count	%
AFRICAN AMERICAN	276	59.35%
AMERICAN INDIAN	1	0.22%
CHINESE	10	2.15%
FILIPINO	6	1.29%
HISPANIC	112	24.09%
JAPANESE	1	0.22%
OTHER	11	2.37%
OTHER ASIAN	2	0.43%
PACIFIC ISLANDER	3	0.65%
SAMOAN	19	4.09%
WHITE	24	5.16%
Total	465	100.00%

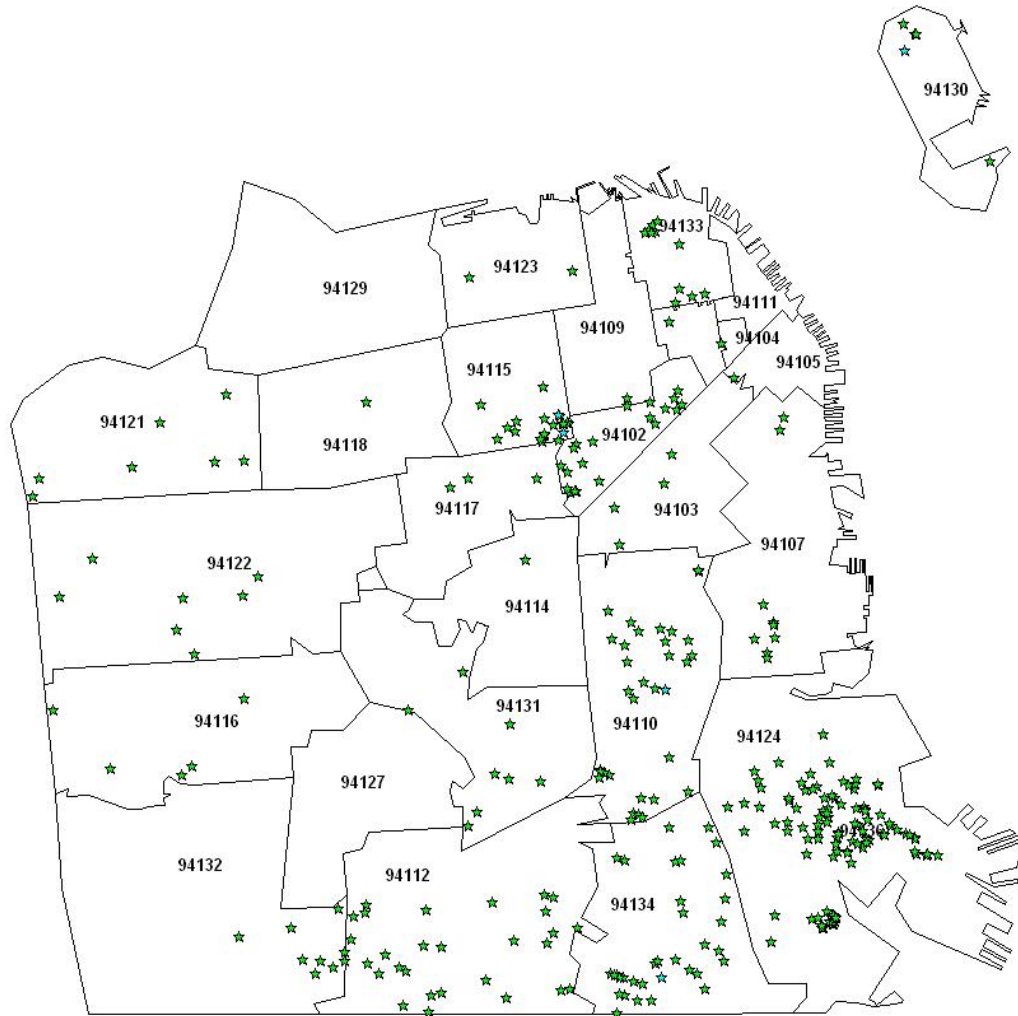
Age on 1/1/13	Count	%
11	3	0.65%
12	7	1.51%
13	19	4.09%
14	54	11.61%
15	66	14.19%
16	108	23.23%
17	129	27.74%
18	74	15.91%
Over 18	5	1.08%
Total	465	100.00%

San Francisco Juvenile Probation Department
2012 Unduplicated Count of Juvenile Hall Bookings
Criminal Offenses
By Geographical Residence of Youth
Supervisory District Boundaries
N=465¹



¹San Francisco = 332 (71.40%)
Non-San Francisco = 133 (28.60%)

San Francisco Juvenile Probation Department
2012 Unduplicated Count of Juvenile Hall Bookings
Criminal Offenses
By Geographical Residence of Youth
Zip Code Boundaries
N=465¹



¹San Francisco = 332 (71.40%)
Non-San Francisco = 133 (28.60%)

San Francisco Juvenile Probation Department
Unduplicated Count of Juvenile Hall Bookings
Criminal Offenses
By Geographical Residence of Youth
Zip Code
2008-2012

Zip Code		2008	2009	2010	2011	2012	% Change
94102	Tenderloin/Western Addition	27	17	24	14	15	-44.4%
94103	South of Market	20	23	15	15	9	-55.0%
94107	Potrero Hill	24	25	18	17	10	-58.3%
94108	Chinatown	4	0	2	0	1	-75.0%
94109	Russian Hill/Polk Gulch	12	11	6	9	4	-66.7%
94110	Inner Mission	66	75	69	37	36	-45.5%
94112	Ingleside/Excelsior	77	67	50	53	29	-62.3%
94114	Castro/Eureka Valley	3	1	2	2	1	-66.7%
94115	Western Addition	45	27	23	30	22	-51.1%
94116	Parkside	18	13	13	9	5	-72.2%
94117	Haight Ashbury/L Western Addition	20	13	14	9	6	-70.0%
94118	Inner Richmond	6	2	3	3	1	-83.3%
94121	Outer Richmond	16	6	10	10	7	-56.3%
94122	Sunset	21	11	17	12	7	-66.7%
94123	Marina/Cow Hollow	0	0	1	0	2	1.0%
94124	Bayview/Hunters Point	195	160	154	125	108	-44.6%
94127	Miraloma/Sunnyside	5	4	2	2	1	-80.0%
94130	Treasure Island	18	16	9	8	5	-72.2%
94131	Twin Peaks/Glen Park	10	7	5	10	7	-30.0%
94132	Lake Merced	17	16	8	16	8	-52.9%
94133	North Beach	15	10	11	10	12	-20.0%
94134	Visitacion Valley/Portola	70	72	51	48	36	-48.6%
	<i>Non-San Francisco and Unavailable</i>	323	260	173	148	133	-58.8%
	Total	1,012	836	680	587	465	-54.1%

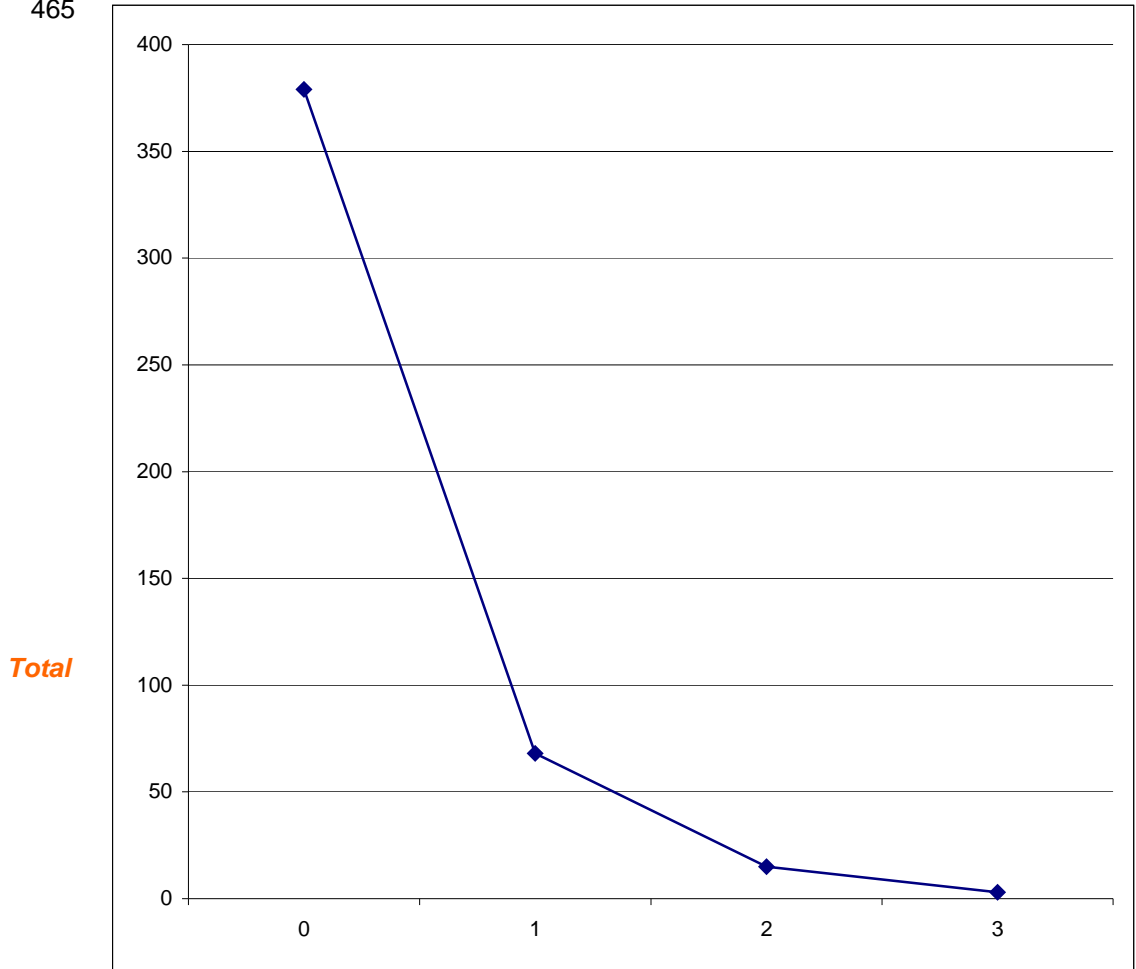
San Francisco Juvenile Probation Department

Unduplicated Count of Juvenile Hall Bookings

Analysis of the Prior Arrests during 2012 For Criminal Offenses
of Youth Admitted to Juvenile Hall in Calendar Year 2012

N=465

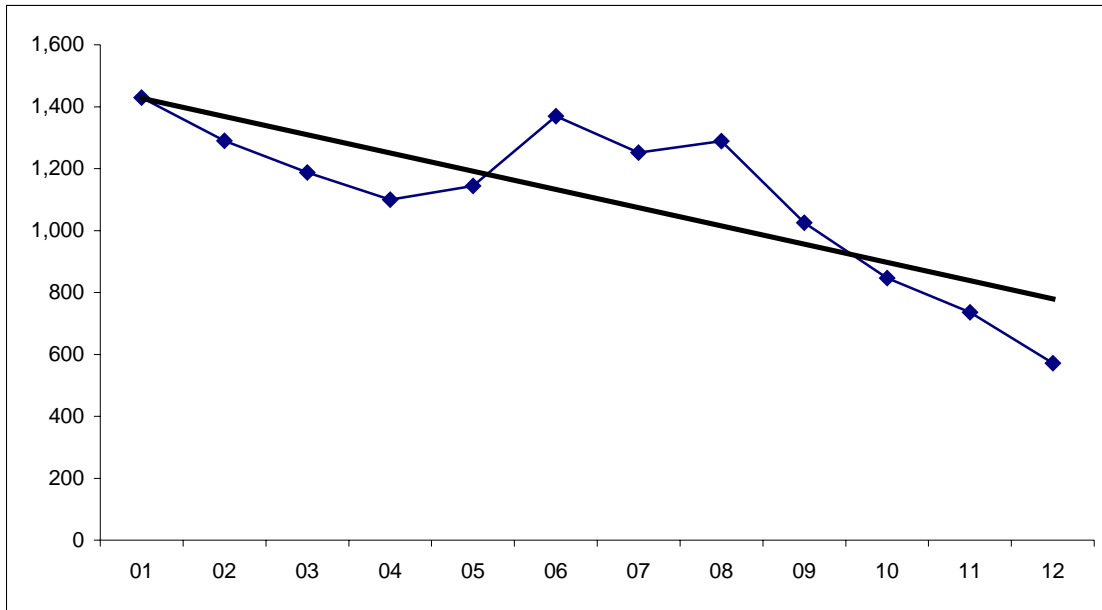
Prior Arrests	Total
0	379
1	68
2	15
3	3
Total	465



Number of Prior Arrests for Criminal Offenses during 2012

Arrested one time	379	81.51%	
more than 1	86	18.49%	Recidivist Rate
Total	465	100.00%	

San Francisco Juvenile Probation Department
 Duplicated Count of Juvenile Hall Bookings -Criminal Offenses
 2001-2012



Year	Bookings
01	1,429
02	1,290
03	1,188
04	1,100
05	1,144
06	1,370
07	1,252
08	1,289
09	1,025
10	846
11	736
12	572

Gender	2001	2002	2003	2004	2005	2006	2007	2008	2009	2010	2011	2012
Male	953	891	884	817	907	1,023	944	986	781	667	568	447
Female	476	399	304	283	237	347	308	303	244	179	168	125
Total	1,429	1,290	1,188	1,100	1,144	1,370	1,252	1,289	1,025	846	736	572

City and County of San Francisco
 Juvenile Probation Department
 2012 Duplicated Count of Juvenile Hall Bookings –Sorted Most to Least Serious
 Criminal Offense Using Department of Justice Summary Codes

Detention Reason	Black		White		Hispanic		Asian		Other		Total	%
	Male	Female	Male	Female	Male	Female	Male	Female	Male	Female		
Willful Homicide	1	0	0	0	1	0	0	0	0	0	2	0.35
Manslaughter Not Vehicle	1	0	0	0	0	0	0	0	0	0	1	0.17
Forcible Rape	1	0	1	0	0	0	0	0	1	0	3	0.52
Robbery	91	30	5	3	37	4	8	1	15	1	195	34.09
Assault*	36	23	5	0	26	5	6	0	10	2	113	19.76
Kidnapping	2	0	0	0	1	0	0	0	0	0	3	0.52
Burglary	23	12	1	0	5	1	0	0	1	1	44	7.69
Theft	23	5	0	0	4	0	1	0	0	0	33	5.77
Motor Vehicle Theft	6	0	0	0	3	1	0	0	0	0	10	1.75
Narcotics	4	0	0	0	13	0	1	0	0	0	18	3.15
Marijuana –Felony	0	0	1	1	1	0	0	0	0	0	3	0.52
Dangerous Drugs	1	1	0	0	0	0	0	0	0	0	2	0.35
Child Molest –Felony	2	0	0	0	1	1	0	0	0	0	4	0.70
Sexual Battery	0	0	0	0	1	2	0	0	0	0	3	0.52
Weapons –Felony	31	4	0	0	8	0	1	0	5	0	49	8.57
Drive Under the Influence	0	0	0	0	1	0	0	0	0	0	1	0.17
Arson	0	0	0	0	2	0	0	0	1	0	3	0.52
Other Felonies	8	1	5	0	2	1	0	0	0	1	18	3.15
Assault Battery	7	5	2	1	3	0	3	0	1	0	22	3.85
Petty Theft	2	3	0	0	2	0	0	0	3	0	10	1.75
Marijuana –Misdemeanor	1	0	0	0	2	0	0	0	0	0	3	0.52
Lewd Conduct–Misdemeanor	0	0	0	0	1	0	0	0	0	0	1	0.17
Prostitution	0	8	0	2	0	0	0	0	0	0	10	1.75
Drunk	0	1	0	0	0	0	0	0	0	0	1	0.17
Disturbing Peace	1	0	0	0	0	0	0	0	0	0	1	0.17
Vandalism	1	1	0	0	0	1	0	0	1	0	4	0.70
Weapons –Misdemeanor	2	0	0	0	0	0	0	0	0	0	2	0.35
Hit and Run –Misdemeanor	1	0	0	0	0	0	0	0	0	0	1	0.17
Other Misdemeanors	3	1	0	1	0	0	0	0	0	0	5	0.87
Escape –Misdemeanor	4	0	0	0	0	0	0	0	0	0	4	0.70
Miscellaneous Traffic	2	0	0	0	0	0	0	0	0	0	2	0.35
Other Drugs –Misdemeanor	0	0	0	0	1	0	0	0	0	0	1	0.17
Total	254	95	20	8	115	16	20	1	38	5	572	100.00
%	44.41	16.61	3.50	1.40	20.10	2.80	3.50	0.17	6.64	0.87	100.00	

*Includes 7 attempted murders.

Calendar Year 2012
Referral Source
Duplicated Count of Juvenile Hall Bookings
Criminal Offenses
N=572

Law Enforcement Referrals		
Local	Number	Percent
San Francisco Police	501	87.59%
BART PD	2	0.35%
Out-of-County Police Departments		
State		
California Highway Patrol	4	0.70%
Federal		
Federal Park Police	0	0.00%
<i>Total out-of county police departments</i>	4	
Total Law Enforcement	505	88.29%
Court Referrals	Number	Percent
Alameda	11	1.92%
Contra Costa	2	0.35%
Fresno	0	0.00%
Los Angeles	0	0.00%
San Bernardino	2	0.35%
Sacramento	0	0.00%
San Diego	0	0.00%
San Joaquin	1	0.17%
San Mateo	21	3.67%
Santa Clara	0	0.00%
Solano	1	0.17%
Sonoma	0	0.00%
Stanislaus	0	0.00%
Tulare	0	0.00%
Total Court	38	6.64%
Department/Agency Referrals	Number	Percent
Probation Officer	27	4.72%
Total Department/Agency	27	4.72%
Total Referrals - All Sources	572	100.00%

**City and County of San Francisco
Juvenile Probation Department
Duplicated Count of Juvenile Hall Bookings
Criminal Offenses**

	2008	2009	2010	2011	2012	Total	%
Part I Crimes							
Murder & Non-Negligent Manslaughter							
Willful Homicide	5	2	6	4	2	19	0.7%
Manslaughter Not Vehicle	0	0	1	0	1	2	0.1%
Manslaughter Vehicle	0	0	1	0	0	1	0.0%
Negligent Manslaughter	0	0	0	0	0	0	0.0%
Rape	2	4	3	1	3	13	0.5%
Robbery	349	302	259	245	195	1350	48.1%
Aggravated Assault							
Assault	219	201	173	131	113	837	29.8%
Kidnapping	3	1	10	9	3	26	0.9%
Arson	2	3	4	11	3	23	0.8%
Burglary	74	57	47	69	44	291	10.4%
Auto Boosting (Larceny)	0	0	0	0	0	0	0.0%
Larceny/Theft							
Theft	42	34	23	25	33	157	5.6%
Motor Vehicle Theft	29	19	20	11	10	89	3.2%
Total Part I Crimes	725	623	547	506	407	2,808	100.0%
Part II Crimes							
Other Assaults							
Sexual Battery	4	4	4	9	3	24	1.4%
Assault Battery	59	59	53	43	22	236	14.2%
Forgery and Counterfeiting							
Forgery, Checks, Access Cards	3	0	0	0	0	3	0.2%
Fraud and Worthless Checks							
Bookmaking	0	0	0	0	0	0	0.0%
Defrauding Innkeeper	3	0	1	2	0	6	0.4%
Embezzlement	0	0	0	0	0	0	0.0%
Receiving Stolen Property*	24	8	10	12	11	65	3.9%
Vandalism	6	5	10	15	12	48	2.9%
Weapons Offenses	91	77	57	57	51	333	20.1%
Prostitution and Commercialized Vice							
Prostitution	25	19	17	16	10	87	5.2%
Sex Offenses (Except Rape and Prostitution)	6	5	2	14	8	35	2.1%
Drug Abuse Violations							
Narcotics	204	99	56	21	19	399	24.0%
Marijuana	34	34	17	7	6	98	5.9%
Dangerous Drugs	6	9	7	2	2	26	1.6%
Gambling	0	0	0	0	0	0	0.0%
Offense Against Family and Children	0	0	0	0	0	0	0.0%
Driving Under the Influence	0	1	1	2	1	5	0.3%
Malicious Mischief	0	0	0	0	0	0	0.0%
Liquor Laws	1	3	0	0	0	4	0.2%
Drunkenness	2	1	1	1	1	6	0.4%
Desorderly Conduct	0	2	3	0	0	5	0.3%
Curfew and Loitering Laws	0	0	0	0	0	0	0.0%
All Other Offenses (Except Traffic)	96	76	60	29	19	280	16.9%
Total Part II Crimes	564	402	299	230	165	1660	100.0%
Total Part I and Part II Crimes	1,289	1,025	846	736	572	4,468	

*Summary Code includes it with the Theft category

Calendar Year 2012
Duplicated Count of Juvenile Hall Bookings
Criminal Offenses

N=572

Gender	Crime Type	Offense Degree Level			Crime Type	Total
		<i>Felony</i>	<i>Misdemeanor</i>	Total	%	%
Female	Drug Crimes	2	0	2	1.6%	
	Person Crimes	75	6	81	64.8%	
	Property Crimes	16	9	25	20.0%	
	Public Order Crimes	4	13	17	13.6%	
	Total	97	28	125	100.0%	21.9%
Male	Drug Crimes	21	4	25	5.6%	
	Person Crimes	259	16	275	61.5%	
	Property Crimes	76	12	88	19.7%	
	Public Order Crimes	47	12	59	13.2%	
	Total	403	44	447	100.0%	78.1%
Total		500	72	572		100.0%

Calendar Year 2012
Duplicated Count of Juvenile Hall Bookings
Criminal Offenses

N=572

Race/Ethnic Origin	Crime Type	Felony	Misdemeanor	Total	Crime Type	Total
					%	%
African American	Drug	6	1	7	2.0%	
	Person	185	12	197	56.4%	
	Property	63	13	76	21.8%	
	Public Order	46	23	69	19.8%	
	Total	300	49	349	100.0%	61.0%
Asian	Drug	1	0	1	4.8%	
	Person	15	3	18	85.7%	
	Property	1	0	1	4.8%	
	Public Order	1	0	1	4.8%	
	Total	18	3	21	100.0%	3.7%
Hispanic	Drug	14	3	17	13.0%	
	Person	74	3	77	58.8%	
	Property	16	3	19	14.5%	
	Public Order	17	1	18	13.7%	
	Total	121	10	131	100.0%	22.9%
Other	Drug	0	0	0	0.0%	
	Person	29	1	30	69.8%	
	Property	3	4	7	16.3%	
	Public Order	6	0	6	14.0%	
	Total	38	5	43	100.0%	7.5%
White	Drug	2	0	2	7.1%	
	Person	15	2	17	60.7%	
	Property	1	0	1	3.6%	
	Public Order	5	3	8	28.6%	
	Total	23	5	28	100.0%	4.9%
Grand Total		500	72	572	100.0%	100.0%

City and County of San Francisco
 Juvenile Probation Department
 2012 Duplicated Count of Petitions Filed –Sorted Most to Least Serious
 Criminal Offense Using Department of Justice Summary Codes

<i>Petition Reason</i>	Black		White		Hispanic		Asian		Other		Total	%
	Male	Female	Male	Female	Male	Female	Male	Female	Male	Female		
Willful Homicide	2	0	0	0	1	0	0	0	0	0	3	0.44
Manslaughter Not Vehicle	1	0	0	0	0	0	0	0	0	0	1	0.15
Forcible Rape	0	0	1	0	0	0	0	0	0	0	1	0.15
Robbery	76	25	5	3	34	4	11	2	14	1	175	25.81
Assault*	32	30	6	0	23	6	6	0	10	2	115	16.96
Kidnapping	2	0	0	0	3	0	0	0	0	0	5	0.74
Burglary	42	24	1	1	13	4	1	0	0	3	89	13.13
Theft	26	14	2	0	7	1	1	0	4	0	55	8.11
Motor Vehicle Theft	6	0	0	0	4	1	0	0	4	0	15	2.21
Narcotics	3	0	0	0	15	0	1	0	0	0	19	2.80
Marijuana –Felony	3	0	2	1	6	1	1	0	1	0	15	2.21
Dangerous Drugs	1	1	1	0	0	1	1	0	1	0	6	0.88
Other Drugs Law Violations	0	0	0	0	0	0	1	0	0	0	1	0.15
Child Molest –Felony	2	0	1	0	1	3	0	0	1	0	8	1.18
Sexual Battery	1	0	0	0	1	0	0	0	0	0	2	0.29
Weapons –Felony	31	1	3	0	14	1	5	0	4	0	59	8.70
Arson	0	0	0	0	2	0	0	0	1	0	3	0.44
Other Felonies	9	1	2	0	4	0	0	0	2	0	18	2.65
Assault Battery	7	3	2	0	5	1	3	0	1	0	22	3.24
Petty Theft	7	4	1	0	0	3	1	1	3	2	22	3.24
Defrauding Innkeeper	1	2	0	0	0	0	0	0	0	0	3	0.44
Annoying Children	0	0	1	0	0	0	0	0	0	0	1	0.15
Prostitution	0	7	0	2	0	0	0	0	0	0	9	1.33
Drunk	0	1	0	0	0	0	0	0	0	0	1	0.15
Liquor Laws	0	0	0	0	1	0	0	0	0	0	1	0.15
Disturbing Peace	1	0	0	0	1	0	0	0	0	0	2	0.29
Vandalism	2	0	0	0	1	0	1	0	0	0	4	0.59
Trespassing	0	0	0	0	0	1	0	0	0	0	1	0.15
Weapons –Misdemeanor	3	0	1	0	3	0	0	0	0	1	8	1.18
Driving Under the Influence	0	0	0	1	2	0	0	0	0	0	3	0.44
Hit and Run	1	0	0	0	0	0	0	0	0	0	1	0.15
Joy Riding	0	0	1	0	0	0	0	0	0	0	1	0.15
Other Misdemeanors	0	0	0	0	2	0	0	0	0	0	2	0.29
Burglary Tools	1	0	0	0	0	0	0	0	0	0	1	0.15
Sex Crimes -Misdemeanor	0	0	0	0	1	0	0	0	0	0	1	0.15
Escape -Misdemeanor	4	0	0	0	0	0	0	0	0	0	4	0.59
Arson	0	0	1	0	0	0	0	0	0	0	1	0.15
Total	264	113	31	8	144	27	33	3	46	9	678	100.00
%	38.94	16.67	4.57	1.18	21.24	3.98	4.87	0.44	6.78	1.33	100.00	

*Includes 1 attempted murder.

Calendar Year 2012
Duplicated Count of Petitions Filed
Criminal Offenses

N=678

Gender	Crime Type	Offense Degree Level			Crime Type	Total
		<i>Felony</i>	<i>Misdemeanor</i>	Total	%	%
Female	Drug Crimes	4	0	4	2.5%	
	Person Crimes	85	4	89	55.6%	
	Property Crimes	34	19	53	33.1%	
	Public Order Crimes	2	12	14	8.8%	
	Total	125	35	160	100.0%	23.6%
Male	Drug Crimes	37	0	37	7.1%	
	Person Crimes	260	23	283	54.6%	
	Property Crimes	97	23	120	23.2%	
	Public Order Crimes	61	17	78	15.1%	
	Total	455	63	518	100.0%	76.4%
Total		580	98	678		100.0%

Calendar Year 2012
Duplicated Count of Petitions Filed
Criminal Offenses

N=678

Race/Ethnic Origin	Crime Type	Felony	Misdemeanor	Total	Crime Type	Total
					%	%
African American	Drug	8	0	8	2.1%	
	Person	200	13	213	56.5%	
	Property	83	23	106	28.1%	
	Public Order	35	15	50	13.3%	
	Total	326	51	377	100.0%	55.6%
Asian	Drug	4	0	4	10.8%	
	Person	19	3	22	59.5%	
	Property	2	3	5	13.5%	
	Public Order	5	1	6	16.2%	
	Total	30	7	37	100.0%	5.5%
Hispanic	Drug	23	0	23	13.5%	
	Person	80	7	87	50.9%	
	Property	27	9	36	21.1%	
	Public Order	16	9	25	14.6%	
	Total	146	25	171	100.0%	25.2%
Other	Drug	2	0	2	3.7%	
	Person	29	1	30	55.6%	
	Property	14	4	18	33.3%	
	Public Order	4	0	4	7.4%	
	Total	49	5	54	100.0%	8.0%
White	Drug	4	0	4	10.3%	
	Person	17	3	20	51.3%	
	Property	5	3	8	20.5%	
	Public Order	3	4	7	17.9%	
	Total	29	10	39	100.0%	5.8%
Grand Total		580	98	678		100.0%

City and County of San Francisco
 Juvenile Probation Department
 2012 Duplicated Count of Petitions Sustained –Sorted Most to Least Serious
 Criminal Offense Using Department of Justice Summary Codes

<i>Petition Sustained</i>	Black		White		Hispanic		Asian		Other		Total	%
	Male	Female	Male	Female	Male	Female	Male	Female	Male	Female		
Robbery	15	1	0	0	5	0	2	0	2	0	25	5.85
Assault	18	11	3	0	14	5	6	0	5	1	63	14.75
Burglary	27	14	1	0	8	2	0	0	0	1	53	12.41
Theft	35	12	2	1	11	1	4	0	2	0	68	15.93
Motor Vehicle Theft	2	0	0	0	3	0	0	0	0	0	5	1.17
Narcotics	2	0	0	1	11	0	0	0	0	0	14	3.28
Dangerous Drugs	0	0	0	0	0	1	1	0	0	0	2	0.47
Child Molest –Felony	2	0	1	0	0	0	0	0	0	0	3	0.70
Other Sex Law Violations	0	0	0	0	0	0	0	0	1	0	1	0.23
Sexual Battery	0	0	0	0	2	0	0	0	0	0	2	0.47
Weapons –Felony	22	0	0	0	3	1	1	0	4	0	31	7.26
Other Felonies	8	1	0	0	9	1	1	0	0	0	20	4.68
Assault Battery	13	10	1	0	9	1	4	0	4	0	42	9.84
Petty Theft	8	7	1	0	3	4	2	1	3	2	31	7.26
Defrauding Innkeeper	5	3	0	0	1	0	0	0	1	0	10	2.34
Marijuana –Misdemeanor	0	0	1	0	1	0	0	0	0	0	2	0.47
Annoying Children	0	0	1	0	0	0	0	0	0	0	1	0.23
Prostitution	0	3	0	0	0	0	0	0	0	0	3	0.70
Drunk	0	1	0	0	0	0	0	0	0	0	1	0.23
Liquor Laws	0	0	0	0	2	0	0	0	0	0	2	0.47
Disorderly Conduct	0	0	0	0	1	0	0	0	0	0	1	0.23
Disturbing Peace	2	0	0	1	1	0	0	0	0	0	4	0.94
Vandalism	5	0	0	0	0	0	0	0	1	0	6	1.41
Trespassing	1	1	0	0	0	1	0	0	0	0	3	0.70
Weapons –Misdemeanor	7	1	1	0	5	0	0	1	1	0	16	3.75
Driving Under the Influence	0	0	0	0	1	0	0	0	0	0	1	0.23
Hit and Run	1	0	0	0	0	0	0	0	0	0	1	0.23
Joy Riding	0	0	1	0	0	0	0	0	0	0	1	0.23
Other Misdemeanors	0	4	0	1	2	0	0	0	0	0	7	1.64
Burglary Tools	1	0	0	0	0	0	0	0	0	0	1	0.23
Sex Crimes –Misdemeanor	0	0	0	0	2	0	0	0	0	0	2	0.47
Escape	4	0	0	0	0	0	0	0	0	0	4	0.94
Miscellaneous Traffic	0	0	0	0	1	0	0	0	0	0	1	0.23
Total	178	69	13	4	95	17	21	2	24	4	427	100.00
%	41.69	16.16	3.04	0.94	22.25	3.98	4.92	0.47	5.62	0.94	100.00	

Calendar Year 2012
Duplicated Count of Petitions Sustained
Criminal Offenses

N=427

Gender	Crime Type	Offense Degree Level			Crime Type	Total
		<i>Felony</i>	<i>Misdemeanor</i>	Total	%	%
Female	Drug Crimes	3	0	3	3.1%	
	Person Crimes	14	16	30	31.3%	
	Property Crimes	24	26	50	52.1%	
	Public Order Crimes	1	12	13	13.5%	
	Total	42	54	96	100.0%	22.5%
Male	Drug Crimes	19	4	23	6.9%	
	Person Crimes	75	41	116	35.0%	
	Property Crimes	82	46	128	38.7%	
	Public Order Crimes	35	29	64	19.3%	
	Total	211	120	331	100.0%	77.5%
Total		253	174	427		100.0%

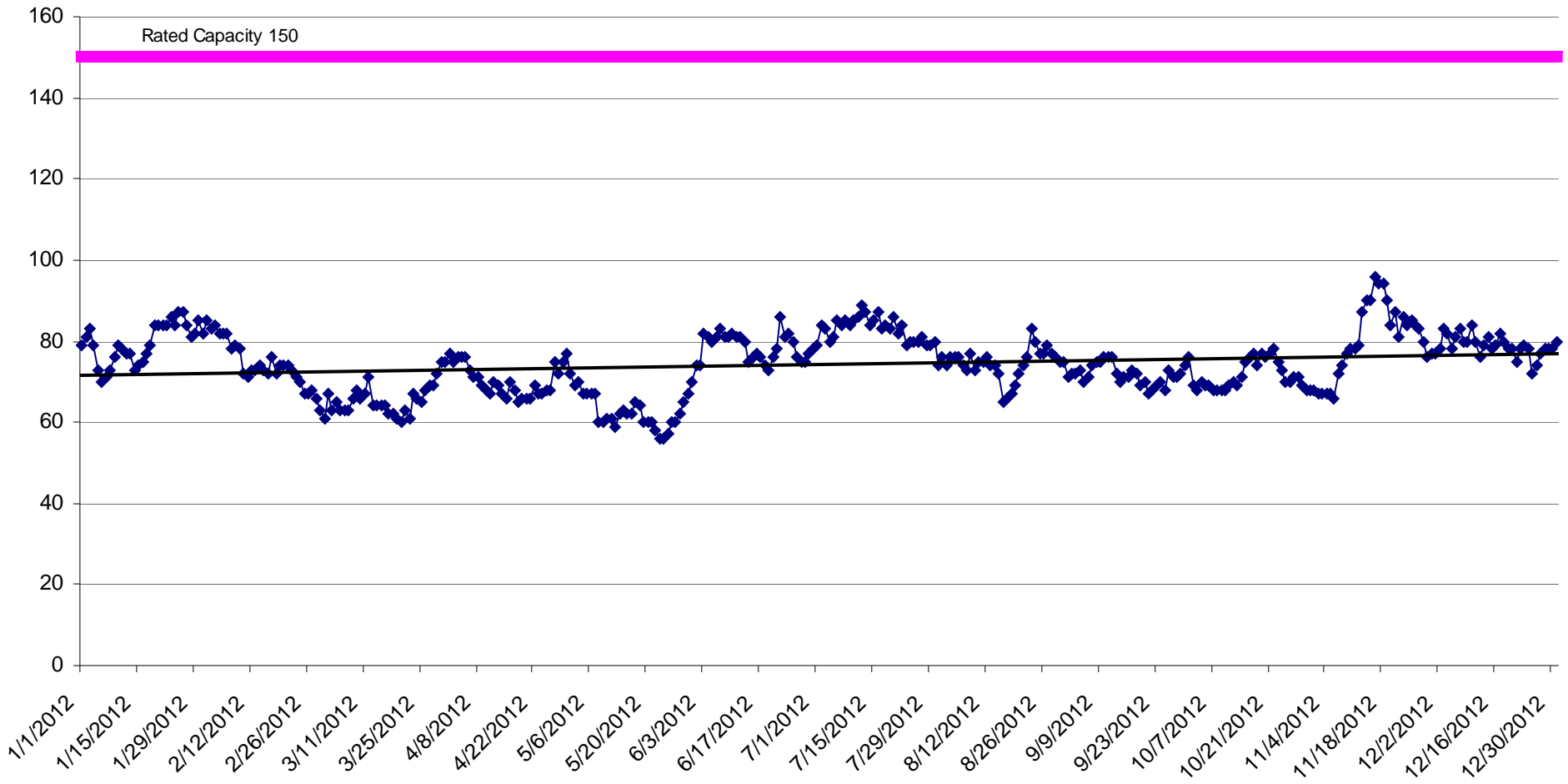
Calendar Year 2012
Duplicated Count of Petitions Sustained
Criminal Offenses

N=427

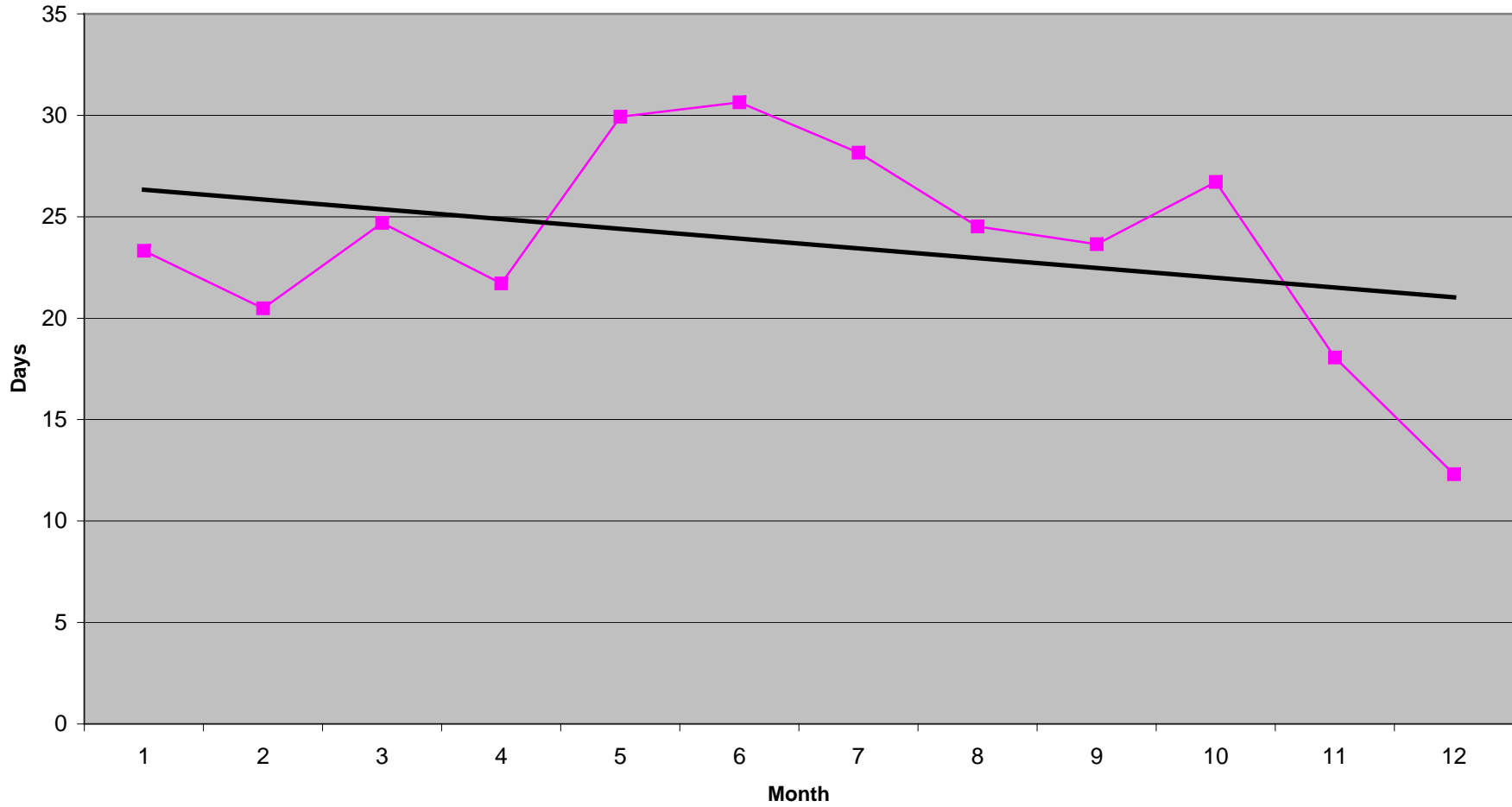
Race/Ethnic Origin	Crime Type				Crime Type	Total
		Felony	Misdemeanor	Total	%	%
African American	Drug	4	1	5	2.0%	
	Person	44	30	74	30.0%	
	Property	75	46	121	49.0%	
	Public Order	26	21	47	19.0%	
	Total	149	98	247	100.0%	57.8%
Asian	Drug	2	0	2	8.7%	
	Person	7	5	12	52.2%	
	Property	4	3	7	30.4%	
	Public Order	1	1	2	8.7%	
	Total	14	9	23	100.0%	5.4%
Hispanic	Drug	15	2	17	15.2%	
	Person	26	15	41	36.6%	
	Property	21	14	35	31.3%	
	Public Order	5	14	19	17.0%	
	Total	67	45	112	100.0%	26.2%
Other	Drug	0	0	0	0.0%	
	Person	8	5	13	46.4%	
	Property	3	7	10	35.7%	
	Public Order	4	1	5	17.9%	
	Total	15	13	28	100.0%	6.6%
White	Drug	1	1	2	11.8%	
	Person	4	2	6	35.3%	
	Property	3	2	5	29.4%	
	Public Order	0	4	4	23.5%	
	Total	8	9	17	100.0%	4.0%
Grand Total		253	174	427		100.0%

San Francisco Juvenile Probation Department
Calendar Year 2012
Juvenile Hall Daily Population
Average 74

Average
Male 64
Female 10



San Francisco Juvenile Probation Department
Calendar Year 2012
Juvenile Hall Monthly Average Length of Stay
N=937
Average 24 days



San Francisco Juvenile Court Processing of Law Violation Cases

Referrals for Criminal Offenses –Calendar Year 2012

Referrals		1,286			
Petition Filed		678	52.72%	Dispositions*	
No Petition Filed		608	47.28%		
Juvenile Hall Bookings		572	44.48%		
Non- Juvenile Hall Bookings		714	55.52%		
				Ward Probation	136 20.06%
				Out of Home Placement	56 8.26%
				Non-Ward Probation (725a WI)	19 2.80%
				Informal Probation (654 WI)	74 10.91%
				Log Cabin Ranch	24 3.54%
				Department Juvenile Justice	2 0.29%
				Remand Adult Court	0 0.00%
				Petition Dismissed	67 9.88%
				Transferred Out of County	103 15.19%

Note: 33 (4.87%) charges on other petitions were Combined and only one disposition resulted. Waiting Adjudication/Disposition: 164(24.19%)

**Includes Petition Outcomes dated as of 1/15/2013 and it will not match the outcomes of page 2 (all referrals outcome). Does not include violation of probation and criminal offense petitions filed prior to 2012.*

San Francisco Juvenile Justice System Terms:

Arrest: The taking of a minor into custody by the police, when the police believe that the minor has committed a violation of a criminal law. A minor may also be taken into custody by the police for an alleged probation violation or pursuant to a warrant issued by a court. While the use of the term arrest is commonplace, technically minors are not arrested; they are detained or taken into temporary custody by the police.

Case: The opening of a file by any agency for a minor who is being processed by that agency because the minor is alleged to have committed an act that violated a criminal law or an act that is illegal only for minors.

Citation: The issuance of a written document to a minor by the police, informing the minor of an offense that the minor is alleged to have committed and ordering the minor to appear before a probation officer on a certain date and time. The minor will not be kept in the custody of the police after the citation is issued.

Detention (secure): When a minor is placed in secure custody at Juvenile Hall and is remains overnight (technically, is arrested on one day and remains in JH at 6 a.m. the next).

Home Detention (non-secure): When a minor is released to her or his home, rather than put into secure detention, but with strict conditions placed on the minor by the Juvenile Court or the Juvenile Probation Department.

Dismissal: When formal charges against a minor, contained in a petition to the Juvenile Court, are dismissed and therefore the minor is not brought under the formal jurisdiction of the Court.

Disposition: A decision by the Juvenile Court with respect to what placement/supervision a minor who is made a ward of the Court will receive. A minor placed under the formal supervision of the Court is made "a ward of the Court."

Law violation: A charge that a minor has committed an act that would be a criminal act if committed by an adult.

Booking: The process of admitting a person to Juvenile Hall.

Referral: The Juvenile Probation Department counts as a referral all separate instances when a minor is cited or brought to the JPD. It uses the term *contact* interchangeably with referral and indicates that each contact represents a "unit of work" for the Department. Referrals include contacts beyond those related to arrests, citations, bookings, or cases.

Petition: A formal statement by the District Attorney's Office alleging that the juvenile is delinquent for committing specified offense. **Petition Sustained:** Charges are found true.

Most serious charge: Of all the charges on the petition, the charge ranked most serious by the California Department of Justice hierarchy, which carries the most jail time.

APPENDIX

2012
Profile of Girls

San Francisco Juvenile Probation Department
 Profile of Girls
 Unduplicated Count of Juvenile Hall Bookings by Geographical Residence of Youth
 Criminal Offenses

Zip Code	Description	Count	%
94102	Tenderloin/Western Addition	1	0.95%
94103	South of Market	2	1.90%
94107	Potrero Hill	5	4.76%
94110	Inner Mission	8	7.62%
94112	Ingleside/Excelsior	3	2.86%
94114	Castro/Eureka Valley	1	0.95%
94115	Western Addition	6	5.71%
94116	Parkside	2	1.90%
94121	Outer Richmond	1	0.95%
94124	Bayview/Hunters Point	32	30.48%
94130	Treasure Island	2	1.90%
94132	Lake Merced	1	0.95%
94133	North Beach	1	0.95%
94134	Visitacion Valley/Portola	10	9.52%
	<i>Non-San Francisco</i> ¹	30	28.57%
	Total	105	100.00%
	¹ Non-San Francisco	Count	%
	OAKLAND	7	23.33%
	HAYWARD	3	10.00%
	EMERYVILLE	2	6.67%
	RICHMOND	2	6.67%
	ANTIOCH	1	3.33%
	BAY POINT	1	3.33%
	DAILY CITY	1	3.33%
	DRAIN	1	3.33%
	FAIRFIELD	1	3.33%
	PLEASANTON	1	3.33%
	ALTA LOMA	1	3.33%
	UNION CITY	1	3.33%
	VALLEJO	1	3.33%
	RODEO	1	3.33%
	SAN RAFAEL	1	3.33%
	SOUTH SAN FRANCISCO	1	3.33%
	STOCKTON	1	3.33%
	SUISUN CITY	1	3.33%
	FALLON	1	3.33%
	UNAVAILABLE	1	3.33%
	Total	30	100.00%

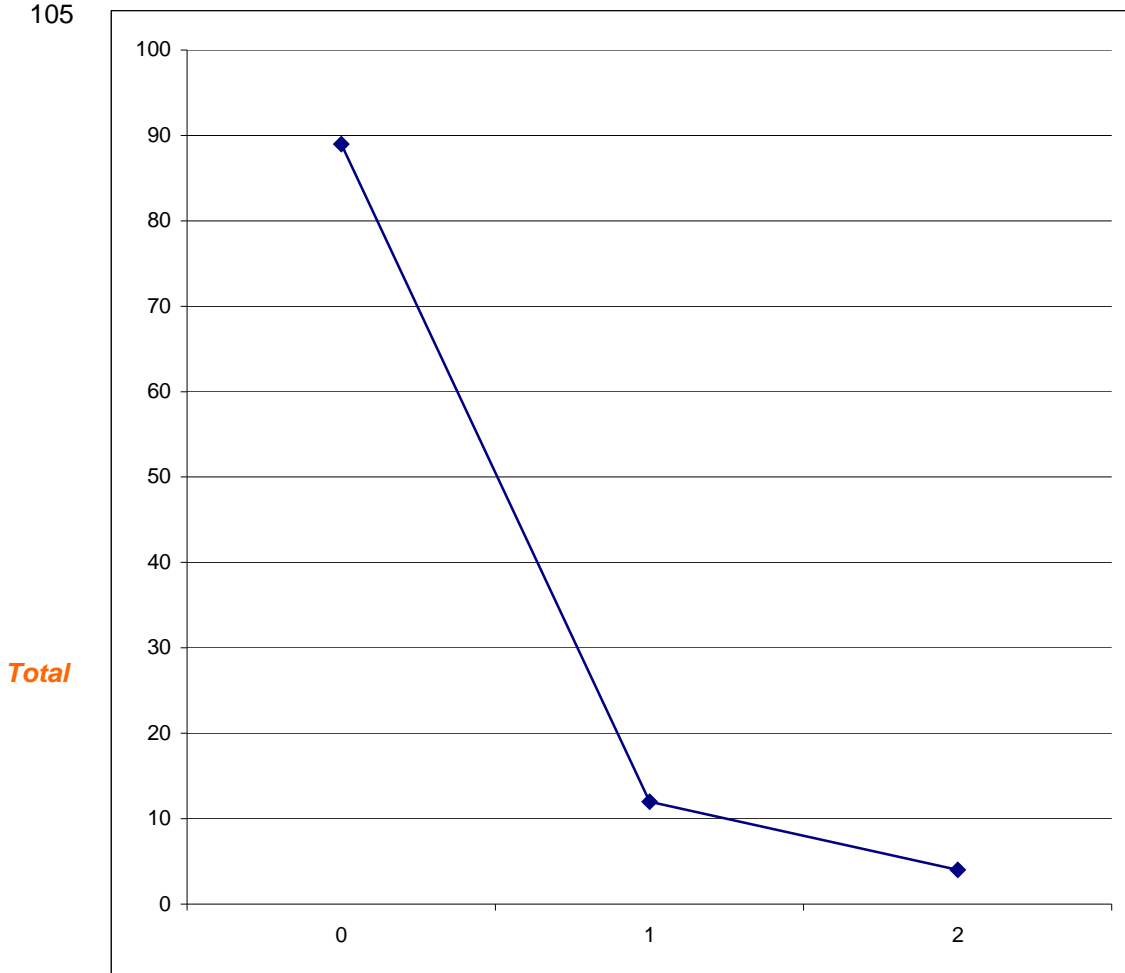
San Francisco Juvenile Probation Department
 Profile of Girls

Unduplicated Count of Juvenile Hall Bookings

Analysis of the Prior Arrests during 2012 For Criminal Offenses
 of Youth Admitted to Juvenile Hall in Calendar Year 2012

N=105

Prior Arrests	Total
0	89
1	12
2	4
Total	105



Number of Prior Arrests for Criminal Offenses during 2012

Arrested one time	89	84.76%	
Arrested more than 1	16	15.24%	Recidivist Rate
Total	105	100.00%	

Calendar Year 2012
 San Francisco Juvenile Probation Department
 Profile of Girls
 Unduplicated Count of Juvenile Hall Bookings
 Criminal Offenses
 N=105

Race/Ethnic Origin	Count	%
AFRICAN AMERICAN	77	73.33%
FILIPINO	1	0.95%
HISPANIC	15	14.29%
OTHER	1	0.95%
SAMOAN	3	2.86%
WHITE	8	7.62%
Total	105	100.00%

Age on 1/1/13	Count	%
12	1	0.95%
13	7	6.67%
14	11	10.48%
15	17	16.19%
16	23	21.90%
17	30	28.57%
18	14	13.33%
Over 18	2	1.90%
Total	105	100.00%

Calendar Year 2012
 Profile of Girls
 Referral Source
Duplicated Count of Juvenile Hall Bookings
Criminal Offenses
 N=125

Law Enforcement Referrals		
Local	Number	Percent
San Francisco Police	111	
<i>Total</i>	111	88.80%
Out-of-County Police Departments		
Police Department	0	
<i>Total</i>	0	0.00%
State		
California Highway Patrol	1	
California State Police	0	
<i>Total</i>	1	0.80%
Federal		
Federal Park Police	0	
<i>Total</i>	0	0.00%
Total Law Enforcement	112	89.60%
Court Referrals		
	Number	Percent
Alameda	7	
San Mateo	6	
<i>Total Court</i>	13	10.40%
Department/Agency Referrals		
	Number	Percent
Probation Officer	0	
Total Department/Agency	0	0.00%
Total Referrals - All Sources	125	100.00%

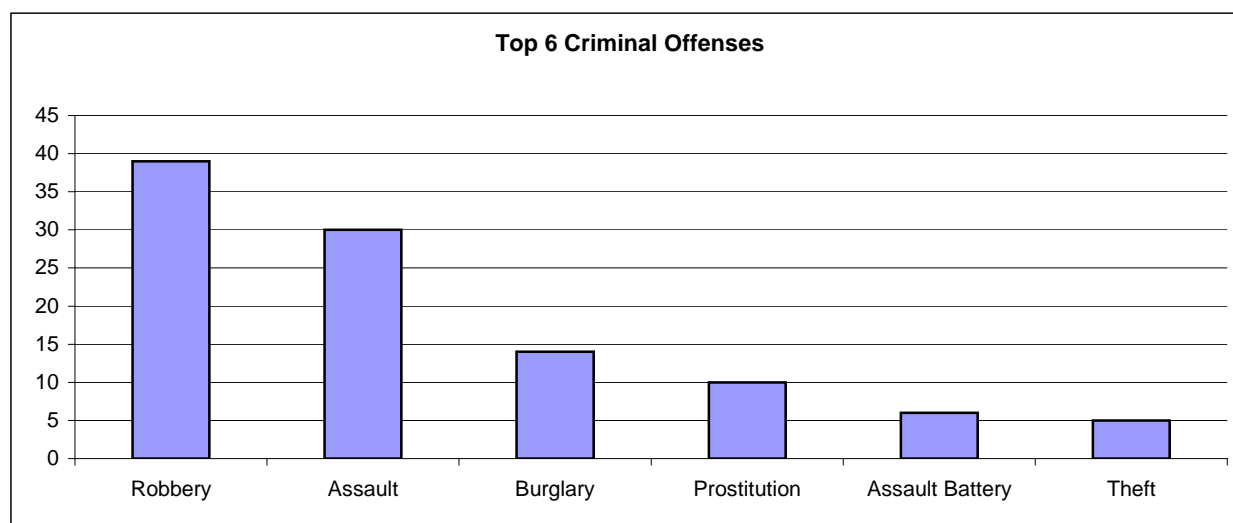
Profile of Girls

2012 Duplicated Count of Juvenile Hall Bookings –Sorted Most to Least Serious
Criminal Offense Using Department of Justice Summary Codes

<i>Detention Reason</i>	African American	White	Hispanic	Asian	Other	Total	%
Robbery	30	3	4	1	1	39	31.20
Assault	23	0	5	0	2	30	24.00
Burglary	12	0	1	0	1	14	11.20
Theft	5	0	0	0	0	5	4.00
Motor Vehicle Theft	0	0	1	0	0	1	0.80
Marijuana –Felony	0	1	0	0	0	1	0.80
Dangerous Drugs	1	0	0	0	0	1	0.80
Child Molest –Felony	0	0	1	0	0	1	0.80
Sexual Battery	0	0	2	0	0	2	1.60
Weapons –Felony	4	0	0	0	0	4	3.20
Other Felonies	1	0	1	0	1	3	2.40
Assault Battery	5	1	0	0	0	6	4.80
Petty Theft	3	0	0	0	0	3	2.40
Prostitution	8	2	0	0	0	10	8.00
Drun	1	0	0	0	0	1	0.80
Vandalism	1	0	1	0	0	2	1.60
Other Misdemeanors	1	1	0	0	0	2	1.60
Total	95	8	16	1	5	125	100.00

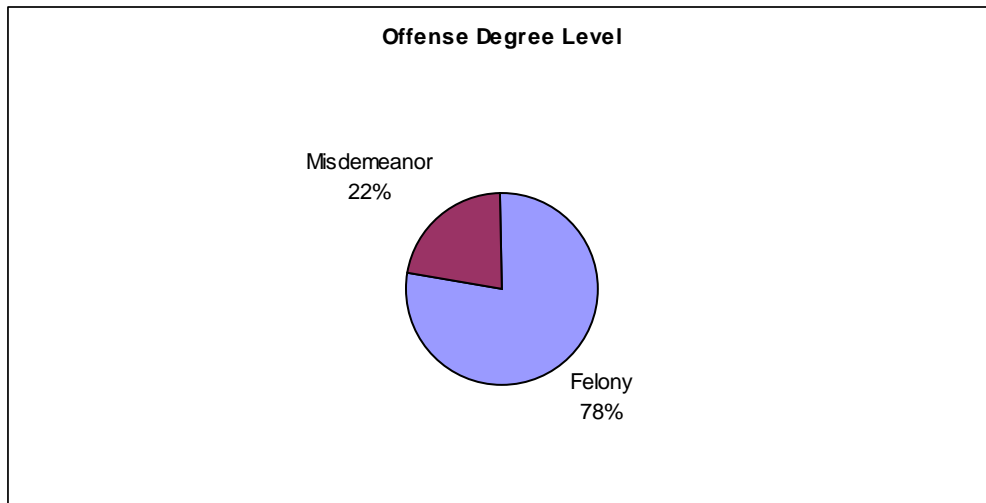
Top 6 Criminal Offenses

Robbery	39	37.50%
Assault	30	28.85%
Burglary	14	13.46%
Prostitution	10	9.62%
Assault Battery	6	5.77%
Theft	5	4.81%
Total	104	100.00%



Profile of Girls
 Duplicated Count of Juvenile Hall Bookings
 Criminal Offenses
 N=125

Race/Ethnic Origin	Crime Type	Felony	Misdemeanor	Total	Crime Type	Total
					%	%
African American	Drug	1	0	1	1.1%	
	Person	54	5	59	62.1%	
	Property	13	8	21	22.1%	
	Public Order	4	10	14	14.7%	
	Total	72	23	95	100.0%	76.0%
Asian	Drug	0	0	0	0.0%	
	Person	1	0	1	100.0%	
	Property	0	0	0	0.0%	
	Public Order	0	0	0	0.0%	
	Total	1	0	1	100.0%	0.8%
Hispanic	Drug	0	0	0	0.0%	
	Person	13	0	13	81.3%	
	Property	2	1	3	18.8%	
	Public Order	0	0	0	0.0%	
	Total	15	1	16	100.0%	12.8%
Other	Drug	0	0	0	0.0%	
	Person	4	0	4	80.0%	
	Property	1	0	1	20.0%	
	Public Order	0	0	0	0.0%	
	Total	5	0	5	100.0%	4.0%
White	Drug	1	0	1	12.5%	
	Person	3	1	4	50.0%	
	Property	0	0	0	0.0%	
	Public Order	0	3	3	37.5%	
	Total	4	4	8	100.0%	6.4%
Grand Total		97	28	125		100.0%



Profile of Girls
 Duplicated Count of Juvenile Hall Bookings
 Criminal Offenses
 N=125

Length Of Stay (Days)	Count	%
1	7	5.60%
2	11	8.80%
3	6	4.80%
4	13	10.40%
5	6	4.80%
6	11	8.80%
7	3	2.40%
8	8	6.40%
9	5	4.00%
10	1	0.80%
11	2	1.60%
12	7	5.60%
13	2	1.60%
14	2	1.60%
15	2	1.60%
16	3	2.40%
17	5	4.00%
18	2	1.60%
19	2	1.60%
20	1	0.80%
21	2	1.60%
22	3	2.40%
25	2	1.60%
27	2	1.60%
28	2	1.60%
29	3	2.40%
31-60 days	4	3.20%
Over 60 days	8	6.40%
Total	125	100.00%
Average Length of Stay	4	days

Calendar Year 2012
 San Francisco Juvenile Probation Department
 Profile of Girls
 Unduplicated Count of Juvenile Hall Bookings (All Referrals)
 N=133¹

Race/Ethnic Origin	Count	%
AFRICAN AMERICAN	95	71.43%
FILIPINO	2	1.50%
HISPANIC	22	16.54%
OTHER	1	0.75%
SAMOAN	5	3.76%
WHITE	8	6.02%
Total	133	100.00%

Age on 2/29/12	Count	%
12	1	0.75%
13	8	6.02%
14	12	9.02%
15	18	13.53%
16	33	24.81%
17	37	27.82%
18	21	15.79%
Over 18	3	2.26%
Total	133	100.00%

¹ Includes Court Orders, Violation of Probation, Home Detention Failures, Warrants, Transfers from other counties, Placement Failures plus all criminal offenses

Calendar Year 2012
San Francisco Juvenile Probation Department
Profile of Girls
Unduplicated Count of All Juvenile Hall Bookings
By Geographical Residence of Youth

N=133

SF Zip Code		Count	%
94102	Tenderloin/Western Addition	2	1.50%
94103	South of Market	2	1.50%
94104	Financial District	0	0.00%
94105	Rincon Hill	0	0.00%
94107	Potrero Hill	7	5.26%
94108	Chinatown	0	0.00%
94109	Russian Hill/Polk Gulch	2	1.50%
94110	Inner Mission	11	8.27%
94111	Telegraph Hill/Waterfront	0	0.00%
94112	Ingleside/Excelsior	3	2.26%
94114	Castro/Eureka Valley	1	0.75%
94115	Western Addition	6	4.51%
94116	Parkside	2	1.50%
94117	Haight Ashbury/L Western Addition	1	0.75%
94118	Inner Richmond	0	0.00%
94121	Outer Richmond	1	0.75%
94122	Sunset	0	0.00%
94123	Marina/Cow Hollow	0	0.00%
94124	Bayview/Hunters Point	41	30.83%
94127	Miraloma/Sunnyside	0	0.00%
94130	Treasure Island	3	2.26%
94131	Twin Peaks/Glen Park	0	0.00%
94132	Lake Merced	2	1.50%
94133	North Beach	1	0.75%
94134	Visitacion Valley/Portola	14	10.53%
	<i>Non-San Francisco and Unavailable</i> ¹	34	25.56%
	Total	133	100.00%
	¹ Non-San Francisco and Unavailable	Count	%
	Oakland	7	20.59%
	Hayward	3	8.82%
	Emeryville	2	5.88%
	Richmond	2	5.88%
	Other Cities ²	20	58.82%
	Total	34	100.00%

²Account for 20 cities with a minimum count of 1.

San Francisco Juvenile Probation Department
 Calendar Year 2012
 Profile of Girls
 Duplicated Count of All Juvenile Hall Bookings by Offense Degree Level
 N=198

Offense Degree	Offense	Count	%		
FELONY	ASSAULT	30	15.15%		
	BURGLARY	10	5.05%		
	DANGEROUS DRUGS	1	0.51%		
	LEWD OR LASCIVIOUS	1	0.51%		
	MARIJUANA	1	0.51%		
	MOTOR VEHICLE THEFT	1	0.51%		
	OTHER FELONIES	3	1.52%		
	OTHER SEX LAW VIOLATIONS	2	1.01%		
	ROBBERY	39	19.70%		
	THEFT	5	2.53%		
	WEAPONS	4	2.02%		
		Total	97		48.99%
	MISDEMEANOR	ASSAULT BATTERY	6	3.03%	
BURGLARY		4	2.02%		
CHANGE OF PLACEMENT/PLACEMENT FAILURE		10	5.05%		
DRUNK		1	0.51%		
OTHER MISDEMEANORS		2	1.01%		
PETTY THEFT		3	1.52%		
PROBATION VIOLATION		6	3.03%		
PROSTITUTION		10	5.05%		
VANDALISM		2	1.01%		
VIOLATION OF HOME SUPERVISION		15	7.58%		
	Total	59		29.80%	
OTHER	COURT ORDER	17	8.59%		
	BENCH WARRANT	5	2.53%		
	ARREST WARRANT	18	9.09%		
	WARRANT FROM ANOTHER COUNTY	2	1.01%		
		Total	42		21.21%
Grand Total		198	100.00%	100.00%	

2012
Probation Violations

Calendar Year 2012
 San Francisco Juvenile Probation Department
 Unduplicated Count of Probation Violation Petitions Filed
 N=109

Gender	Count	%
FEMALE	14	12.84%
MALE	95	87.16%
Total	109	100.00%

Race/Ethnic Origin	Count	%
AFRICAN AMERICAN	57	52.29%
HISPANIC	33	30.28%
OTHER	3	2.75%
OTHER ASIAN	1	0.92%
PACIFIC ISLANDER	1	0.92%
SAMOAN	11	10.09%
WHITE	3	2.75%
Total	109	100.00%

Age on 1/1/13	Count	%
14	4	3.67%
15	9	8.26%
16	16	14.68%
17	29	26.61%
18	36	33.03%
Over 18	15	13.76%
Total	109	100.00%

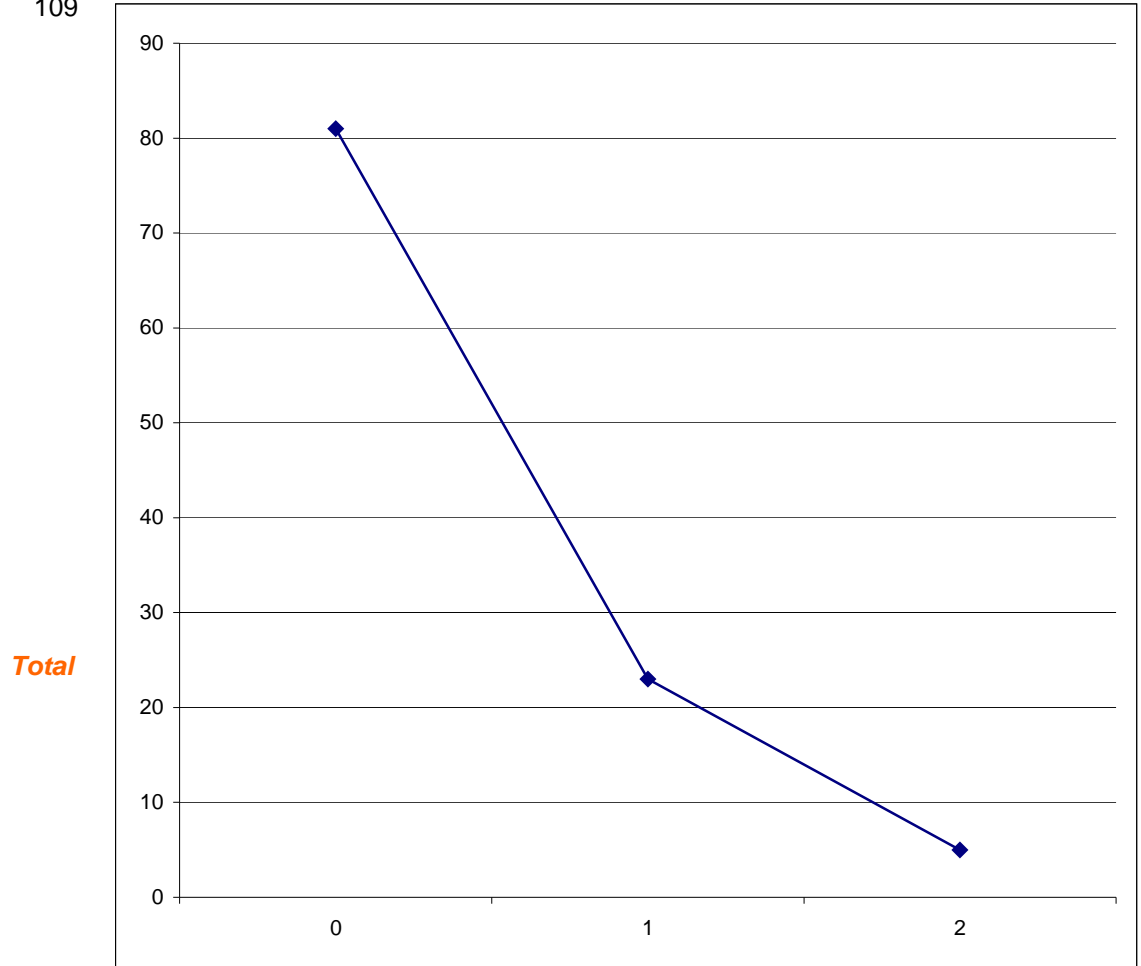
Calendar Year 2012
San Francisco Juvenile Probation Department
Unduplicated Count of Probation Violation Petitions Filed
N=109

Zip Code		Count	%
94102	Tenderloin/Western Addition	1	0.92%
94103	South of Market	4	3.67%
94105	Rincon Hill	0	0.00%
94107	Potrero Hill	2	1.83%
94108	Chinatown	0	0.00%
94109	Russian Hill/Polk Gulch	5	4.59%
94110	Inner Mission	12	11.01%
94111	Telegraph Hill/Waterfront	0	0.00%
94112	Ingleside/Excelsior	9	8.26%
94114	Castro/Eureka Valley	2	1.83%
94115	Western Addition	7	6.42%
94116	Parkside	4	3.67%
94117	Haight Ashbury/L Western Addition	2	1.83%
94118	Inner Richmond	0	0.00%
94121	Outer Richmond	1	0.92%
94122	Sunset	1	0.92%
94123	Marina/Cow Hollow	0	0.00%
94124	Bayview/Hunters Point	30	27.52%
94127	Miraloma/Sunnyside	1	0.92%
94130	Treasure Island	0	0.00%
94131	Twin Peaks/Glen Park	2	1.83%
94132	Lake Merced	4	3.67%
94133	North Beach	4	3.67%
94134	Visitacion Valley/Portola	11	10.09%
	<i>Non-San Francisco and Unavailable</i> ¹	7	6.42%
	Total	109	93.58%
	¹ <i>Non-San Francisco and Unavailable</i>	Count	%
	BRISBANE	1	14.29%
	FAIRFIELD	1	14.29%
	OAKLAND	3	42.86%
	RICHMOND	1	14.29%
	VALLEJO	1	14.29%
	Total	7	100.00%

Unduplicated Count of Petitions Filed For Probation Violation

Analysis of Prior Petitions Filed For Probation Violation
 Calendar Year 2012
N=109

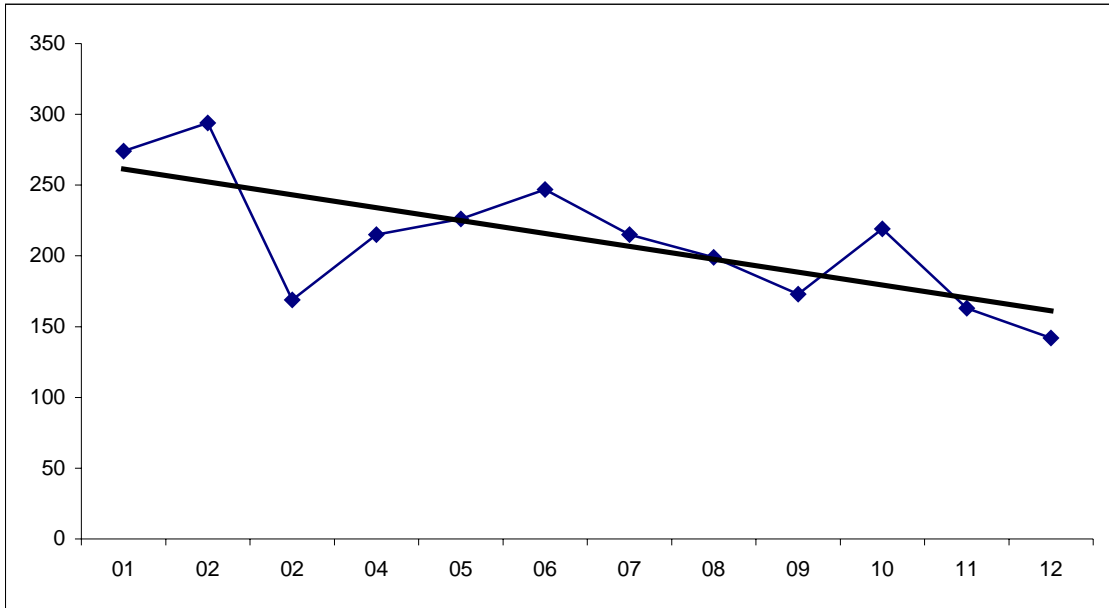
Prior Petitions	Total
0	81
1	23
2	5
Total	109



Number of Prior Petitions for Probation Violation During 2012

<i>Prior Petitions</i>			
<i>one</i>	81	74.31%	
<i>more than 1</i>	28	25.69%	<i>Recidivist Rate</i>
<i>Total</i>	109	100.00%	

San Francisco Juvenile Probation Department
 Duplicated Count of Petitions Filed For Probation Violation
 2001-2012



Year	Petitions
01	274
02	294
02	169
04	215
05	226
06	247
07	215
08	199
09	173
10	219
11	163
12	142

Gender	2001	2002	2003	2004	2005	2006	2007	2008	2007	2010	2011	2012
Male	205	229	135	164	183	202	178	146	146	176	132	125
Female	69	65	34	51	43	45	37	53	27	43	31	17
Total	274	294	169	215	226	247	215	199	173	219	163	142

San Francisco Juvenile Court Processing of Probation Violation Referrals

Calendar Year 2012

Referrals		158		Dispositions*		Ward Probation	20	14.08%
		Petitions Filed 142				Out of Home Placement	20	14.08%
Bookings –Petitions Filed (36 25.35%)		Non-Bookings – Petitions Filed (106 74.65%)		Dispositions*		Non-Ward Probation (725a WI)	1	0.70%
						Log Cabin Ranch	3	2.11%
Juvenile Hall Bookings		53 33.54%		Dispositions*		Petition Dismissed	44	30.99%
						Transferred Out of County	5	3.52%
Non- Juvenile Hall Bookings		105 66.46%				<p><i>Note: 3(2.11%) charges on other petitions were Combined and only one disposition resulted. Waiting Adjudication/Disposition: 46(32.39%)</i></p> <p><i>*Includes Petition Outcomes dated as of 1/15/13.</i></p>		